

6298

U. S. Department of Agriculture
★ MAR 11
U. S. Department of Agriculture

Bolgiano's

Bulbs - Plants - Seeds

for Fall Planting

1937

EASTER 1938
COMES
APRIL 17

F. W. Bolgiano & Co.

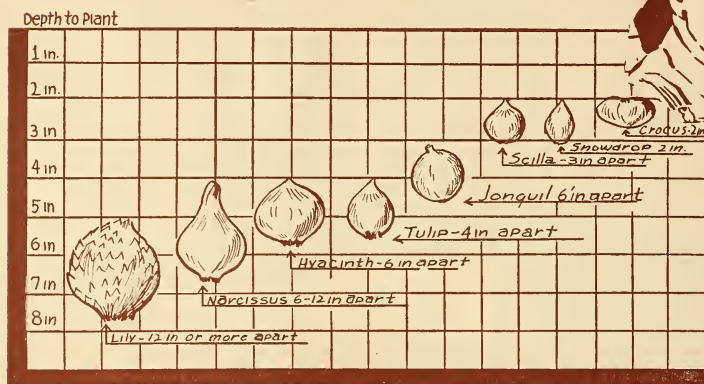
607 E Street, Northwest

411 New York Ave. N. E.

WASHINGTON, D. C.

SAVE THIS CHART

It shows the depths at which different bulbs should be planted.



Let this chart of the Master Gardener guide you in planting bulbs this fall. A general rule, he says, is to plant them at a depth equal to twice their diameter.

HOW TO PLANT

OUTDOOR CULTURE—Plant the bulbs as soon after September as possible to enable the roots to make good growth before the cold weather sets in. They can, however, be planted from September until the ground becomes frozen. They require a moderately rich soil, or else apply Loma, Vigoro, Sheep Manure or Bone Meal. How far apart and how deep to plant the different bulbs is shown in the accompanying chart. When the ground freezes, cover with 3 or 4 inches of leaves or dry litter. Rake off after frost.

INDOOR CULTURE—Plant hyacinths, tulips and narcissus in a sandy soil. Give a good soaking after planting and water once or twice

a week during the time the bulb makes root. After planting keep in a dark place in the house and keep a paper bag over the pot until the sprout is about three inches long. They may then be brought to the light and bag removed.

GROWING PAPER WHITE NARCISSUS IN WATER—Place a dozen bulbs in a shallow bowl, cover with small stones and keep filled with water. Place a few small pieces of charcoal in the bottom of the bowl to keep the water from fouling. Keep in a moderately temperate room. They require no care, no attention. They keep on growing and produce a beautiful flowering plant in about six weeks.

HOW TO ORDER

NAME AND ADDRESS should be written plainly both on the Order Blank and on the envelope enclosing the order. Names of seeds and bulbs should be written out in full in plain writing.

OUR TERMS are always cash with order. **MONEY** can be sent at our risk by Post Office or Express Money Order, New York or Chicago Draft, or by registered letter. We cannot hold ourselves responsible for cash sent loose in letters.

POSTAGE AND EXPRESS CHARGES—**ALL BULBS** will be sent by Mail charges prepaid, when ordered at single or dozen rates. At 100 rates and over add 5 per cent to the cost of the bulbs to cover carrying charges. **Packets, Ounces, Quarter-Pounds or Pounds**, ordered at list prices, will be sent **FREE** by mail or express. This **DOES NOT APPLY** to Beans, Corn, Peas, Field and Grass Seeds

and Seed Potatoes, which will be sent at regular Parcel Post or Express Rates. Orders for greater than one pound lots will also be delivered at regular parcel post or express rates.

GIVE FULL DIRECTIONS always, whether shipment is to be made by freight, express or parcel post.

EXPRESS OR FREIGHT shipments should have the name of the station plainly given where different from the post office.

WE GUARANTEE our seeds, plants or bulbs to reach our customer in good condition. We give no warranty, expressed or implied, as to description (including kind, variety and name), purity or productiveness, or any other matter of any seeds, plants or bulbs we send out, and will not be in any way responsible for the crop.

Capitol Park Lawn Grass Seed

NEVER FAILS TO GIVE SATISFACTION



Remember! Fall, Not Spring, Is the Best Time to Seed Your Lawn

BOLGIANO'S "CAPITOL PARK" LAWN GRASS SEED

This seed has proven to be unsurpassed for first-class and permanent results. This is due to the fact that we use only the very finest varieties of the most suitable grasses, thoroughly re-cleaned, free from all chaff and weed seeds.

BOLGIANO'S "CAPITOL PARK" LAWN GRASS SEED will give a green, smooth, velvety sod with a thick bottom and free from such varieties of common grasses as produce clumps and knots on the lawn, which so frequently spoil the desired smooth and deep effect. Lb., 35 cts.; 5 lbs., \$1.50; 25 lbs., \$6.50.

used on those portions of the lawn which are shaded by trees, buildings, etc., thus covering the whole area with a beautiful carpet of green. Lb., 40 cts.; 5 lbs., \$1.75; 25 lbs., \$7.75.

BOLGIANO'S FAIR GREEN LAWN GRASS Special Mixture with Creeping Bent

BOLGIANO'S "SHADY NOOK" LAWN GRASS SEED

The Grass That Will Grow in Shady Places

It will quickly produce an abundant and even growth of beautiful green grass. The grasses used in making this special mixture are only those that are well adapted for growing in shade, and as it blends well with our Capitol Park Lawn Grass Seed it may be

For a base there is still nothing superior to Kentucky Blue Grass, which remains evergreen all winter. Then there's a grass that resists the dry summer weather; one to grow quickly, giving an even sod in a short time; the old favorite white clover that most people want in abundance, and finally bent grass to give that dense undergrowth and velvety appearance so wanted by all. Lb., 50 cts.; 5 lbs., \$2.25; 25 lbs., \$11.00.

Lōma

the best thing on earth
for lawns and gardens

AMERICA'S FINEST PLANT FOOD

It is quick acting. You can readily see on an established lawn a vast difference in ten days after applying Lōma. Greener, healthier, thicker, more velvety. Apply on a new lawn three days before you sow your seed, the grass will come up more quickly and thicker than you have ever seen before. Full directions on every package. Lb., 10 cts.; 5 lbs., 45 cts.; 10 lbs., 85 cts.; 25 lbs., \$1.50; 50 lbs., \$2.50; 100 lbs., \$4.00.

Write for Our Free Booklet "How to Make and Maintain a Lawn"

Spring Flowering Crocus

READY FOR DELIVERY IN SEPTEMBER



Crocus

The earliest of flowers to show its head above the grass almost before the snow is gone. Crocus will grow in any place—in the lawn, in flower borders, in rock gardens, edge of shrubs, on the slopes of terraces, in sun or shade or even under trees. The little gem has endeared itself to all those who look to nature for signs of returning spring.

Plant during the Fall and cover the bulbs 2 to 3 inches deep. For mass effect, space the bulbs 2 to 3 inches apart. If grown in the lawn, the grass should not be cut until the foliage has yellowed or the plants will lack strength to bloom the following year.

Extra Large Size Bulbs	Each	Doz.	100
White, Blue, Striped, Yellow.....	\$.05	\$.35	\$ 2.50

AUTUMN FLOWERING CROCUS

Plant Now—Bloom This Fall

They are excellent for planting in the grass and on the borders of shrubbery. Given a sheltered and sunny position in the rock-garden, they add delightful color at a time when most rock-garden plants are out of bloom.

SATIVUS (Saffron Crocus). A very showy, hardy, fall-flowering bulbous plant with beautiful purple-lilac flowers feathered with white and adorned with bright orange anthers. Plant the bulbs in early fall and they will bloom before frost. Splendid for the rock garden. 5 cts. each; 45 cts. per doz.; \$3.00 per 100.

SPECIOSUS. Graceful bright violet-blue flowers with contrasting orange-red anthers

arising from a lovely yellow throat. It is well suited to growing indoors in pots or pans. 5 cts. each; 45 cts. per doz.; \$3.00 per 100.

ZONATUS. This variety presents us with a lovely combination of rosy lilac with a yellow center surrounded by a bright orange zone. It may be grown indoors in pots or pans where it will give a beautiful display. 5 cts. each; 45 cts. per doz.; \$3.00 per 100.

FREESIA—For Indoor Blooming

One of the most charming bulbs known for Winter-flowering and cut flowers. They grow well and bloom freely in an ordinary sitting room, if placed near a window and not kept too



Improved Purity Freesias

warm. They need not be kept in the dark as other bulbs. Plant 6 to 8 bulbs in a 5-inch pot, in light, rich soil. Never force but grow in a fairly cool temperature.

IMPROVED PURITY. The finest and purest white variety yet introduced; of strong growth and very large flowers. Produces large sprays of snow-white flowers deliciously fragrant. 5 cts. each; 40 cts. doz.; \$3.00 per 100.

RAINBOW MIXTURE. Clusters of yellow, blue, violet, mauve, pink and lavender, borne on graceful stems. The fragrance alone will repay you. 5 cts. each; 45 cts. doz.; \$3.25 per 100.

Bolgiano's First Size Specially Selected Single Dutch Hyacinths

We have condensed our list to only the very best of each particular shade or color. The varieties we list produce the largest and finest trusses of bloom and should always be selected for specimens in pots, for glass culture, for fiber culture and for garden bedding when the largest and most perfect blooms are desired.

First Size, Extra Selected Bulbs, 15 cts. each; \$1.50 doz.; \$11.00 per 100

Second Size Bulbs, 12 cts. each; \$1.25 doz.; \$9.50 per 100

SINGLE PURE WHITE

L'INNOCENCE. The very best white. White as the driven snow. Extra fine truss with very large bells. A wonderful variety for glass and fibre culture as well as excellent for bedding and forcing. Always produces good flowers.

SINGLE RED, ROSE AND PINK

GERTRUDE. Deep carmine rose. A very large, well-filled truss of a fine color. Excellent for forcing and bedding.

LADY DERBY. Unusually large, thick, waxy bells of the loveliest shade of rose pink; spike ideal, strong, tall and well-filled.

LA VICTORIE. Brilliant carmine red; one of the very finest red varieties for bedding and forcing. It retains its superb color to the end.

QUEEN OF THE PINKS. Very bright rose-pink, of unusually clear tone; large spike with large bells.

SINGLE DARK AND LIGHT BLUE

GRAND MAITRE. Beautiful porcelain blue, gigantic truss filled with fine bells. Extra strong stem. One of the finest of the lighter blue hyacinths for all purposes.

KING OF THE BLUES. Deep, glossy blue, splendid well-formed large spike, on short stem. Bells of medium size but of great substance.

QUEEN OF THE BLUES. Pale azure-blue, with silvery appearance, large spike, splendid flower; an exhibition variety of great merit. Excellent for forcing and bedding.

SINGLE YELLOW

YELLOW HAMMER. Compact spike of a lovely creamy yellow. Excellent for pot culture.

MIXED HYACINTHS

Single Bedding Varieties

	Each	Doz.	100
White, yellow, red,			
blue, pink	\$.10	\$1.00	\$7.50

HYACINTH GLASSES

Hyacinths grow beautifully planted in water in specially made hyacinth glasses. Glasses are furnished in green, blue and amber color. Price, 35 cts. each. Not available. See outside back cover.



Single Early Hyacinth—L'Innocence

Ready for
Delivery in
September

Bolgiano's Extra Selected Single Early Tulips

6 Sold at
Dozen Rate
50 at 100 Rate



Single Early Tulip—Keizerskroon

It would be impossible to conceive of anything more attractive than a bed of beautiful Tulips. The single early varieties, which give us flowers about 2 to 4 weeks ahead of other Tulips, are unrivalled for brilliancy of bloom and ease of culture. They are excellent subjects for formal beds and garden borders. A liberal planting of the following varieties will repay you.

	Each	Doz.	100
BELLE ALLIANCE. Brilliant, large flower. Crimson, scarlet; sweet scented	\$0.06	\$0.65	\$4.85
CHRYSOLORA. Pure yellow, large flower. The best for bedding on account of its long keeping qualities.....	.06	.65	4.75
COULEUR CARDINAL. Rich, glittering cardinal red.....	.06	.65	4.75
DE WET (Fireglow). A new variety of remarkable beauty. Golden yellow flushed and stippled fiery orange-scarlet; the brightest bedding variety07	.70	5.00
FRED MOORE. Brilliant apricot orange shaded scarlet.....	.06	.65	4.75
KEIZERSKROON. Bright red with broad golden yellow border, extra large flower on tall, strong stem; fine for forcing; very effective for bedding08	.80	6.00
LADY BOREEL. Large, purest white; grand for exhibition and for forcing. The finest white for bedding.....	.07	.70	5.25
PINK BEAUTY. Deep rose with white flush outside.....	.07	.70	5.00
PRINCE OF AUSTRIA. Clean orange red, sweet scented. An excellent forcing variety as well as a fine bedder.....	.06	.65	4.75
RISING SUN. A deep golden yellow of great substance. Large flower on tall stem. Good for forcing or bedding.....	.06	.65	4.75
ROSE LUISANTE. Dark silky rose pink.....	.06	.65	4.85
VAN DER NEER. Handsome violet-purple blooms. Long stems; good forcer06	.65	4.85
VERMILLION BRILLIANT. Large, well formed flower of a beautiful vermilion scarlet06	.65	4.75
YELLOW PRINCE. Bright yellow, the best yellow for forcing on account of its earliness in growing, its fine shaped flower on strong, erect stem and its very sweet scent.....	.06	.65	4.75

MIXED SINGLE TULIPS

	Each	Doz.	100
Red, Pink, Yellow, White; separated as to color.....	\$0.05	\$0.55	\$4.50
Single Early Tulips; mixed.....	.05	.55	4.25

We Pay Postage on All Bulbs at the Each and Doz. Rate. At 100 Rate Add 5 Per Cent to the Cost of the Bulbs for Carrying Charges

Bolgiano's Extra Selected Double Early Tulips

READY FOR
DELIVERY
IN SEPTEMBER

Many prefer these to the single varieties because they remain in bloom longer. They do well planted in pans for winter blooming in the house and last even longer than the singles. They are ideal for outdoor bedding because they make a compact growth, and are therefore less subject to injury by winds. Their large double Peony-like flowers produce a gorgeous display.



Double Early Tulip

	Each	Doz.	100
BOULE DE NEIGE. Large Peony-like pure white flower.....	\$0.08	\$0.80	\$6.00
ELECTRA. Rosy violet06	.65	4.85
IMPERATOR RUBRORUM. Fine bright scarlet; large flower; excellent for forcing and bedding.....	.06	.65	5.00
MARÉCHAL NIEL. Silky soft yellow, tinted salmon. A fine new shade	.08	.80	6.00
MR. VAN DER HOFF. Pure golden yellow, large flowers, good forcer	.06	.65	4.85
PEACH BLOSSOM. Deep rosy-pink, deepening with age to a deep rose. A very fine flower with a wonderful color. A new variety of superb quality which we are glad to recommend.....	.06	.65	4.85
TREADOR. Reddish-orange with rich yellow border; a splendid large, very double flower.....	.06	.65	5.00
MIXED. Red, pink, yellow, white.....	.05	.55	4.25

OLD DUTCH OR BREEDER TULIP

This fine old May Flowering type is exceedingly popular. They are very similar to the Darwins in their tall, strong growth, but with even larger flowers. They bloom about the same time as the Darwins, but have an entirely different range of colors, comprising Bronze, Terra-cotta, Orange, Brown and other artistic tones.

	Each	Doz.	100
BRONZE QUEEN. Buff, tinged bronze.....	.06	.65	4.75
DOM PEDRO. Coffee color07	.75	5.50
INDIAN CHIEF (Meyerbeer). Deep Indian red, flushed purple. A large flower of exquisite form on strong stems.....	.10	1.00	7.75
LOUIS XIV. Rich dark purple, with a broad margin of golden bronze	.08	.80	5.85
PANORAMA. Reddish mahogany; very large forcer.....	.07	.75	5.50
PINK PEARL. Lilac pink, inside rosy cream. Truly magnificent....	.07	.75	5.50
PRINCE OF ORANGE. (Sunset) terra cotta with orange edge. Fragrant	.06	.60	4.75
YELLOW PERFECTION. Olive yellow color.....	.07	.75	5.50
BREEDER TULIPS MIXED05	.55	4.25

LOMA used around your bulbs produces earlier, larger and better blooms.

Bolgiano's Darwin Tulips

READY FOR
DELIVERY
IN SEPTEMBER

The splendid form, exquisite coloring and the enormous size of the Darwins make them the favorite of all tulips. They belong to the May-flowering or late blooming class and produce their gigantic flower cups on long, stiff stems, 20 to 26 inches above the broad foliage. They are also splendid for pan or pot culture.



Darwin Tulip

	Each	Doz.	100
AFTERGLOW. Rosy orange, salmon-tinted margins.....	\$0.06	\$0.60	\$4.75
BARONNE de la TONNAYE. Vivid rose pink, shading paler toward outer edges of petals06	.60	4.50
BARTIGON. Carmine red.....	.06	.60	4.75
BLEU AIMABLE. Bright violet-purple, shaded steel-blue; blue base..	.06	.60	4.75
CITY OF HAARLEM. Cardinal red, with distinct blue base; very large, strong, straight stems.....	.08	.85	6.75
CLARA BUTT. Bright salmon rose, lovely color and shape.....	.06	.60	4.50
DREAM. Soft rosy mauve on heliotrope ground.....	.06	.60	4.50
FARNCOMBE SANDERS. Brilliant rose scarlet.....	.06	.60	4.50
FLAMINGO. An even tone of pale shell pink.....	.06	.60	4.75
JUBILEE. Deep rich blue, shaded purple; large, egg-shaped flowers on strong stems09	.90	7.00
LA TULIPE NOIRE. The blackest of all tulips. A large broad flower of glossy black; high lights maroon.....	.08	.80	6.00
MAD. KRELAGE. Bright rose, light border, large flower.....	.06	.60	4.50
PRIDE OF HAARLEM. Brilliant carmine rose, very large.....	.06	.60	4.50
PRINCESS ELIZABETH. Soft lilac rose. Edges of paler shade.....	.06	.60	4.75
REV. H. EWBANK. Soft lavender-violet.....	.06	.60	4.75
SUNDEW. The fringed crimson Darwin.....	.06	.60	4.75
WILLIAM PITT. One of the largest brilliant carmine.....	.06	.65	4.85
YELLOW DARWIN. Rich yellow globular flowers.....	.06	.60	4.75
ZWANENBURG. Large pure white; a magnificent sort.....	.08	.85	6.75
DARWIN TULIPS. Bolgiano's Superior Mixture.....	.05	.50	3.75

PARROT TULIPS

The petals are curiously fringed or lacinated on the edges and their artistic form and coloring make them especially suitable as cut flowers.

	Each	Doz.	100
CRAMOISE BRILLIANT. Scarlet.....	\$0.06	\$0.60	\$4.50
FANTASY. A beautiful warm pink that delights everyone. An outstanding rare variety09	.95	7.00
MARKGRAAF VAN BADEN. Yellow.....	.06	.60	4.50
PERFECTA. Light scarlet, striped green and yellow.....	.06	.60	4.50
PARROT TULIPS. Mixed06	.60	4.50

Bolgiano's Cottage Tulips

OR MAY FLOWERING TULIPS



READY FOR DELIVERY
IN SEPTEMBER

An excellent class of single, late flowering Tulips which are especially adapted for planting among shrubbery or in masses in the open border where, if left undisturbed, they will often bloom freely for several years. They come into bloom about the same time as the Darwins. This is a great advantage as it permits the planting together of both types in one bed and having the varieties in bloom all about the same time.

	Each	Doz.	100
DIDO. Orange-red changing to orange-yellow; inside orange.....	\$0.06	\$0.65	\$5.00
FAIRY QUEEN. Rosy heliotrope, margined amber-yellow.....	.06	.65	4.75
GESNERIANA MAJOR (Spathulata). True rich crimson scarlet with blue black center.....	.06	.65	5.00
INGLESCOMBE PINK. Delicate rose pink, tinted salmon, blue-green center06	.65	4.75
INGLESCOMBE YELLOW. Flowers perfect. Color, full rich yellow	.06	.60	4.75
MRS. MOON. Very deep yellow, reflexed pointed petals; one of the most beautiful06	.65	5.00
PICOTEE (Maiden's Blush). White margined carmine rose.....	.06	.65	4.75
ROSABELLA. Luminous rose with broad pink edge, inside beautiful shell pink on creamy white base.....	.08	.80	5.75
SIRENE (Lily Flowered). Rich cerise pink, reflexed petals....	.06	.65	4.75
COTTAGE TULIPS MIXED05	.55	4.00

BOTANICAL OR SPECIES TULIPS

Rock Garden Tulips

These Tulips are particularly adapted for rock gardens or in borders; they show their bright colors early in the season and have graceful recurving petals. For the most striking effects, plant in masses or clumps.

CLUSIANA (Lady or Candystick Tulip). Outer petals cherry red, inner petals creamy white with violet base; very choice for massing in front of evergreens; height, 8 inches. 7 cts. each; 75 cts. doz.; \$5.50 per 100.

KAUFMANNIANA. One of the earliest varieties, blooming early in April; colors, creamy white tinged carmine; wonderful effects may be had if planted under trees or naturalized in shady places; height, 5 to 7

inches. 10 cts. each; \$1.00 doz.; \$8.00 per 100.

EICHLERI. Immense crimson scarlet, shaded orange with black center marked with gold; height, 11 inches. 8 cts. each; 80 cts. doz.; \$6.00 per 100.

SYLVESTRIS (Florentina Odorato). A handsome yellow variety, sweet scented; often has two flowers to a stem; height, 7 inches. 8 cts. each; 85 cts. doz.; \$6.50 per 100.

Daffodils ◊ Narcissus



Single Large Trumpet Varieties (Daffodils)

No garden is complete without a liberal planting of Daffodils or Narcissus. Perfectly hardy, they grow and produce abundantly in almost any position, sun or shade, moist or dry. They are equally suited to pot culture for winter flowering and are unsurpassed for Naturalizing. We supply only No. 1, double nose, first quality bulbs.

Note—The trumpet, crown or cup is the center position of the flower. The “perianth” is the surrounding row of petals or wings.

LARGE YELLOW SINGLE TRUMPET DAFFODILS

	Each	Doz.	100
EMPEROR. This grand variety is one of the finest daffodils in cultivation. Pure yellow trumpet of immense size and wide overlapping, rich primrose perianth; height 20 inches.....	\$0.08	\$0.90	\$6.75
KING ALFRED. One of the largest pure yellow Daffodils, immense flowers of intense yellow; trumpet large and open with a deeply filled mouth; vigorous and free; height, 24 inches.....	.12	1.25	8.75
OLYMPIA. Perianth light chrome-yellow; high trumpet of deep chrome-yellow, heavily ruffled. This is ranked as a leading cut flower variety	.12	1.20	8.50

BICOLOR SINGLE TRUMPET DAFFODILS

EMPRESS. The perianth is white, and the trumpet rich yellow; the entire flower is of great substance and is carried on strong stems 20 inches high.....	\$0.08	\$0.80	\$6.00
VAN WAVEREN'S GIANT. Enormous flower with deep yellow trumpet, well opened; primrose perianth with outer petals exceptionally broad and inner ones usually slightly twisted, making the flower more graceful.....	.15	1.50	11.00
SPRING GLORY. Clear white informal type perianth; large trumpet of deep yellow reflexing at the edge. A vigorous grower.....	.10	1.00	7.50

WHITE TRUMPET DAFFODILS

MRS. E. H. KRELAGE. Often referred to as the “White King Alfred.” This is one of the finest pure white trumpet varieties; very free flowering and a splendid exhibition variety.....	.20	1.75	13.50
---	-----	------	-------

DOUBLE LARGE TRUMPET NARCISSUS

PRIMROSE PHOENIX. Rose striped; large; lovely soft lemon-yellow; tall; free flowering; greatly admired.....	\$0.12	\$1.25	\$8.75
--	--------	--------	--------

Narcissus ♦ Jonquils

ALL NO. 1 DOUBLE NOSE
1st QUALITY BULBS

**INCOMPARABILIS
NARCISSUS**

WILL SCARLETT. A cream colored perianth supporting a fine cup, exquisitely frilled, of wonderful orange-scarlet. Splendid for the garden because it holds its color nicely and is persistently hardy; height, 18 inches. 9 cts. each; 95 cts doz.; \$7.25 per 100.

SIR WATKIN. This is a popular variety, perfectly hardy. The flowers of Sir Watkin have a deep primrose yellow perianth, and a more deeply tinted yellow cup or trumpet; height, 20 inches. 8 cts. each; 85 cts. doz.; \$6.25 per 100.

THE BARRI CLASS

The Trumpet Is Less Than 1/3 the Length of the Perianth

CONSPICUUS. Broad, spreading perianth of pale yellow, darker yellow cup, edged scarlet; excellent for cutting. 6 cts. each; 65 cts. doz.; \$5.00 per 100.

THE LEEDSII CLASS

Short Trumpet with White Perianth

CRYSTAL QUEEN. White perianth and a lovely primrose-yellow cup which becomes lighter as the flowers age. Flowers face forward and slightly upward when in full bloom.....



POETICUS ORNATUS

	Each	Doz.	100
CRYSTAL QUEEN.....	\$0.10	\$1.00	\$7.50

POETICUS NARCISSUS

ORNATUS. A splendid flower with a pure white perianth and a white eye, margined bright crimson. A long-stemmed variety for garden and for forcing. Plant it liberally this year and it will make a most attractive and showy part of your garden.....

	.06	.65	5.00
--	-----	-----	------

POETAZ OR CLUSTERED FLOWERED NARCISSUS

LAURENS KOSTER. Clusters of 5 to 7 large, pure white blooms with orange-yellow cups

	.08	.85	6.25
--	-----	-----	------

MIXED NARCISSUS

This is a special mixture of all varieties for growing in masses or for mixed borders or among the shrubbery. A clump of these planted in your garden will produce a fine lot of flowers for table and house decorations. These are particularly hardy and will flourish and increase for years

	.05	.50	4.00
--	-----	-----	------

FOR INDOOR PLANTING ONLY

NARCISSUS PAPER WHITE. For indoor planting only. Dishes of these, grown in pebbles and water, can be had in bloom continuously from Thanksgiving until Easter. See back cover page.

Medium Size Bulbs.....	.05	.40	3.00
Large Size Bulbs06	.50	4.00
Extra Large Size Bulbs.....	.06	.60	4.50

GRAND SOLEIL D'OR. Narcissus Paper Yellow. Golden yellow, with deep orange cup. Very fragrant. For cutting this is a fine variety. Treat the same as the regular Paper Whites. See back cover.....

	.10	1.10	8.50
--	-----	------	------

Sweet Scented Jonquils

CAMPERNELLE RUGULOSUS. Large rich yellow flowers, borne very freely; very effective in deep pockets near the base of rockeries....

	.06	.60	4.75
--	-----	-----	------

Spring Flowering Bulbs

FOR THE GARDEN, ROCK GARDEN AND NATURALISTIC PLANTING

Without bulbs, rock gardens do not reach their prime until Summer, but when bulbs are used the flowering period of a rock garden will be extended considerably, as bulbs produce a rich variety of form and color during Spring.

CHIONODOXA (Glory of the Snow). Brilliant sky-blue flowers that come into bloom soon after the snow is gone. They require no further care when once planted. 5 cts. each; 30 cts. doz.; \$2.25 per 100.

FRITILLARIA MELEAGRIS (Snake's Head or Guinea Hen Flower). Pendant, bell-shaped flowers oddly marked and checkered. Some are splashed white and purple, cream and maroon, etc. Does well in semi-shade and is perfectly hardy. 10 to 18 inches high. Blooms in the spring 5 cts. each; 50 cts. doz.; \$3.50 per 100.

IXIAS (African Corn Lily). These charming flowers come from the Cape of Good Hope. Their rich and varied hues make a brilliant display in the spring, when planted outdoors in a protected place. They may be grown indoors for winter blooms also. 5 cts. each; 45 cts. doz.; \$3.00 per 100.

MUSCARI (Heavenly Blue Grape Hyacinths). Numerous spikes of light blue flowers in early spring. Blooms during April. Can be planted in masses or in the rock-garden, in either shade or sun. 5 cts. each; 35 cts. doz.; \$2.50 per 100.

SCILLAS (Squills). Exquisite rich blue flowers in the early spring. A charming effect may be had by planting in conjunction with yellow crocus, Chionodoxas and Snowdrops. 5 cts. each; 35 cts. doz.; \$2.50 per 100.

SNOWDROPS. In the early Spring it is a lovely sight to see a snowy white bed of graceful snowdrops. They may also be used effectively in the center and edge with Scilla or Chionodoxas by inter-mingling them.

Single Snowdrop. Large lovely single white bells. 5 cts. each; 40 cts. doz.; \$3.00 per 100.

Double Snowdrops. Same as the single only

large, handsome double flowering. 6 cts. each; 55 cts. doz.; \$4.25 per 100.

WINTER ACONITE (*Eranthis Hyemalis*). Golden blossoms look charming resting on an emerald-green cushion of leaves. The foliage remains long after the flowers and does well in a moist situation, such as under trees. 5 cts. each; 35 cts. doz.; \$2.75 per 100.



Grape Hyacinths

FOR INDOOR PLANTING

WHITE CALLA LILY (*Aethiopica*). Pure white blooms of an attractive, unusual form and one of our best window plants. Pot bulbs in 6 to 8-inch pots as soon as received. Give an abundance of water, light, and heat and the results will be very satisfactory. 20 cts. each; \$2.25 per doz.

YELLOW CALLA LILY (*Elliottiana*). The yellow Calla; large rich, deep golden flowers often 4 to 5 inches across at the mouth; habit of growth and foliage like the old favorite white Calla excepting the leaves of *Elliottiana* are spotted with white. 15 cts. each; \$1.50 per doz. (Ready in November.)

OXALIS. Suitable for pot culture and Winter blooming. Large, pink, white, lavender, and yellow flowers held well above dwarf sturdy growth. Keep close to light to keep foliage from growing too long. Bulbs, 5 cts. each; 55 cts. doz.

FREESIA (*Improved Purity*). 5 cts. each; 40 cts. doz.; \$3.00 per 100. (For full description see page 4.)

FREESIA (*Rainbow Mixture*). 5 cts. each; 45 cts. doz.; \$3.25 per 100. (For full description see page 4.)

PAPER WHITE NARCISSUS. (For description, see back cover.) Large bulbs, 6 cts. each; 50 cts. doz.; \$4.00 per 100. Extra large Bulbs, 6 cts. each; 60 cts. doz.; 4.50 per 100.

GRAND SOLEIL D'OR or Paper Yellows. (For full description see back cover.) 10 cts. each; \$1.10 doz.

BOLGIANO'S ESPECIALLY PREPARED BULB FIBRE is composed of Holland Peat, pulverized charcoal and crushed oyster shells. It furnishes in an assimilable form all the plant food elements needed by bulbs. Lb. 10 cts.; 3 lbs. 25 cts.

PEBBLES FOR PLANTING NARCISSUS BULBS. Qt. 10 cts.; 4 qts. 35 cts.

LILY OF THE VALLEY—For Indoor Blooming

READY FOR DELIVERY IN NOVEMBER

Beautiful pure white flowers, very fragrant and produced in abundance. Plant in pots or pans in either soil, peat or bulb fibre, keep in moderate heat and give plenty of water. An

abundance of these fragrant flowers may be had all through the winter and early spring. Will bloom in about three weeks after planting. 10 cts. each; \$1.10 doz.; 25 for \$2.00.

Beautiful Lilies to Plant This Fall

Most Lily bulbs being of late maturity are not ready for delivery until October and November. This is the best time to plant them. If, however, the ground is liable to freeze before you receive them, the best thing is to prepare your bed, cover with leaves, manure or straw to prevent freezing until the bulbs arrive and then plant as soon as received.

LILLIUM CANDIDUM (Annunciation or Madonna Lily). Northern France grown. (Ready for delivery in September.) Many people do not know how easily they may grow these wonderful flowers in their own gardens. From twenty to thirty large snow-white belis are borne each season on their long stems giving forth a delightful fragrance during May and June. Plant as early as possible in the fall, covering with not more than 2 inches of dirt. Dust bulbs lightly with sulphur before planting to insure best results. Prices, extra fine large bulbs, 20 cts. each; \$2.00 doz. Powdered sulphur, 10 cts. per lb.



Lillium Candidum

LILLIUM AURATUM PLATYPHYLLUM (Gold Banded Lily). Large, graceful, fragrant ivory-white flowers. They are studded with bright carmine spots and striped through the center with golden yellow. Blooms from July to September, and does well in semi-shade. Plant 6 inches deep. Thrives best in an acid soil. (October delivery.) Mammoth bulbs, 35 cts. each; 12 for \$3.50.

HENRYII (Yellow Show Lily). Rich apricot yellow flowers with golden brown spots. A sensation everywhere. Vigorous grower and a single plant will carry as many as 20 big blooms. Grows 5 to 6 feet with fine foliage. Does well in both light and heavy loam. Best adapted to partial shade. Plant about 8 inches deep. Blooms July and August. (October or November delivery.) Extra fine bulbs, 20 cts. each; \$2.00 doz.

REGALE LILY (A Royal Beauty). (October or November delivery.) The flowers are white, slightly suffused with pink, with a beautiful shade of canary yellow at the center, blending out part way up the trumpet. The fragrance is fascinating. A splendid hardy Lily for the garden, flowering in July. Well-grown bulbs often produce five to eight blooms.

	Each	Doz.
Mammoth Bulbs, 7 to 8 inches circumference	\$0.15	\$1.50
Jumbo Bulbs, 8 to 9 inches in circumference20	2.00

SPECIOSUM RUBRUM OR ROSEUM. One of the greatest favorites. The petals are well-rounded back and handsomely spotted. Color rose white, heavily spotted rich crimson. Blooms in August and September. Cover bulbs 8 inches deep. Extra fine bulbs, 25 cts. each; \$2.50 doz. (October or November delivery.)

TIGRINUM SPLENDENS (Tiger Lily). The finest form of Tiger Lily with the richest color. The large shapely flowers are of a rich dark salmon-orange spotted with glossy black. This Lily is very robust in habit and of easy culture. Blooms nearly all Summer. Cover bulbs 8 inches deep. (October or November delivery.) 20 cts. each; \$2.00 doz.

PHILIPPINENSE FORMOSANUM. Large, fragrant white blooms tinted rose on outside. Perfectly hardy, it blooms in September. Does best in a sunny location. Height 3 to 4 ft. A handsome lily; it is one of the more recent introductions which we are pleased to recommend Plant 8 inches deep. (October or November delivery.) 25 cts. each; \$2.50 doz.

HEMEROCALLIS (Yellow Day Lily)

FLAVA (Lemon Lily). Sweet scented, clear full yellow; 2½ feet. Flowers in June.

KWANSO. Large, double-flowered variety, with rich golden bronze flowers.

THUNBERGI. Much like Flava, but flowers in July, a month later. Plants, 25 cts. each; 3 for 65 cts.; 6 for \$1.20; \$2.00 per doz.

FUNKIA (August Lily)

LANCEOLATA. Broad massive foliage, lilac, lily-like, flowers July and August. Easy to manage and very effective. Plants, 20 cts. each; 3 for 50 cts.; 6 for 90 cts.; \$1.70 per doz.

After October 1st
CHOPPER CANARIES
 Guaranteed to Sing

With each bird we give a guarantee certificate.
 Beautiful Cages with Stands
 Birds and Cages at Attractive Prices

Amaryllis

BOLGIANO'S GIANT HYBRIDS

(Bulbs Ready October 20th)



Amaryllis Bulbs

There is possibly no other bulbous plant that will give the amateur greater pleasure for indoor growing than these giant flowered beautiful Amaryllis. The United States Department of Agriculture here in Washington has been working to the improvement of the various strains for years, and it is a wonderful sight to see several thousands of these magnificent pot plants in bloom in the month of March here in the government greenhouses. Our bulbs produce vigorous stems with from 4 to 6 blooms of the most perfect form, ranging in color from pure white grounds, with varied markings of rose, red and crimson to the richest colors, such as scarlet, crimson, bright red, cherry and almost maroon. They are easily grown. Pot up bulbs as soon as received in good garden loam, enrich with a handful of bone fertilizer. Cover only to the shoulder of the bulb, leaving the neck protruding. Keep in a temperature of about 50 to 60 degrees until

the bulbs get a good start then place in a sunny window and give water regularly. Bulbs planted in October or November should come into bloom in March. After they have finished blooming set in a cool place until the bulbs become dormant. They may then be repotted the next Fall. Mixed colors only. Jumbo Bulbs, suitable for planting in a 6-inch pot, 40 cts. each, if to go by mail, 45 cts. each.

SWEET PEAS—Plant in October or November

SUPERB SPENCER SWEET PEAS

AMBITION. Rich deep lavender, with a darker shade on the base of the standard and wings.

DAMASK ROSE. The brightest rose carmine Sweet Pea.

FLAMINGO. Orange scarlet, heavily shaded cerise, absolutely sunproof.

OLYMPIA. Deep red purple of graceful form and immense size.

PINKIE. Rose pink with large and frilled flowers.

PIRATE GOLD. A rich deep golden orange.

SEXTET QUEEN. Pure white flowers of perfect form and great substance.

SMILES. Clear glistening salmon.

WARRIOR. Rich chocolate maroon.

THE ADMIRAL. Largest and best Navy blue.

WELCOME. The most brilliant dazzling scarlet Sweet Pea.

WHAT JOY. Deep cream. The flowers are heavily frilled.

The above varieties, pkt. 10 cts.; oz. 20 cts.; ¼ lb. 60 cts.; lb. \$2.00.

SUPERB SPENCER MIXED. This mixture contains the choicest named varieties blended in the proper portions to insure a well-balanced color effect. It will give a lavish display of the largest and most attractive flowers. Pkt. 5 cts.; oz. 15 cts.; ¼ lb. 50 cts.; 1 lb. \$1.50.

EARLY SPENCER SWEET PEAS

They flower several weeks earlier than the regular Spencers.

BLUE BONNET. A fine clear blue.

EXPOSITION PINK. A gorgeous rich pink.

HOPE. Pure white, black seeded.

LAVANDA. A pure clear lavender.

RED BIRD. Bright crimson red.

VALENCIA. Bright sunproof orange.

Above varieties, pkt. 10 cts.; oz. 35 cts.; ¼ lb. \$1.25.

MIXED EARLY SPENCERS. A well-balanced mixture of the newest and brightest

colors. Pkt. 10 cts.; oz. 25 cts.; ¼ lb. 75 cts.; lb. \$2.25, postpaid.

BOLGIANO'S SPECIAL GRANDIFLORA MIXED. A fine mixture of the grandiflora varieties. Pkt. 5 cts.; oz. 10 cts.; ¼ lb. 25 cts.; lb. 90 cts.

PERENNIAL OR EVERLASTING SWEET PEA. Once planted these live year after year, bearing magnificent clusters of flowers early in the Spring before the annual kind begins to flower. Excellent for cutting. Grow 6 to 8 feet high. Pkt. 10 cts.; ½ oz. 25 cts.; oz. 40 cts.; ¼ lb. \$1.25.

Peony Roots

Peonies are undoubtedly one of the most satisfactory species among the herbaceous perennials. Once established they require little care and reward the gardener with an abundance of fragrant and beautiful colored blooms of great size each spring.

Alexander Dumas. Rich pink.
 Armandine Mechin. Red.
 Boule de Neige. White.
 Candidissima. Cream.
 Couronne d'Or. White.
 Edulis Superba. Deep pink.
 Felix Crousse. Rich ruby-red.
 General Bertrand. Beautiful light pink.
 Price, any above, 25 cts. each

Karl Rosenfeld. Bright crimson red. Extra fine. 35 cts. each.



Peony

IRIS—QUEEN OF PERENNIALS



Iris

IRIS—Germanica (German Iris)

BRUNO. Bronze.
 CAMEO. Pinkish yellow.
 GOLD IMPERIAL. Vigorous grower; free flowering; golden yellow.
 IRIS KING. Brown standards, coppery yellow falls.
 JOYA. Purple.
 KOCHI. Rich claret purple, early.
 LENT A. WILLIAMSON. Standards, blue; falls, purple, suffused blue at edge.
 MARION CRAN. Best of pinkish shades.
 MOTHER OF PEARL. White.
 PRINCESS BEATRICE. Standards and falls clear lavender blue shading to pale silvery blue at base. Sweet scented.
 RHEIN NIXE. Standards white, falls rich violet purple with distinct narrow white edge. Very large.
 SHEKINAH. Pale yellow, shading to amber, lemon colored beard. This is a fine yellow Pallida.

TAJ MAHAL. A very beautiful white of great substance.

TRUE CHARM. White, edged blue.
 Plants, 20 cts. each; 3 for 50 cts.; 6 for 90 cts.; \$1.70 per doz. of one variety.

IRIS SIBIRICA (SIBERIAN IRIS)

ORIENTALIS. A free flowering violet purple Iris. Height, 3½ feet. Blooms throughout the month of June.

SNOW QUEEN. A beautiful white, very free flowering.

Plants, 20 cts. each; 3 for 50 cts.; 6 for 90 cts.; \$1.70 per doz.

IRIS PUMILA

A dwarf Iris that is ideal for the rock garden. Blooms during March and April. Alba, white; Black Midget, purple; Buzzer, lavender; Nugget, yellow. Plants, 25 cts. each; 3 for 65 cts.; 6 for \$1.25; \$2.25 per doz.

CONVALLARIA

LILY OF THE VALLEY. For outdoor planting only; extra fine. 10 cts. each; \$1.00 per doz.

SPANISH IRIS

SPANISH IRIS. Known as "Orchids of the Hardy Flower Garden." They grow from 18 to 24 inches high and produce their exquisite airy blooms during the last of May and through June. Plant the latter part of September. Mixture containing all colors; bulbs, 5 cts. each; 55 cts. per doz.; \$4.50 per 100.

GROUND COVERS FOR SHADY SPOTS

PACHYSANDRA. Japanese Spurge. A trailing plant, 6 to 8 inches high, forming a complete cover of bright glossy green foliage and small spikes of flowers during May and June. \$1.50 per doz.; \$10.00 per 100.

VINCA MINOR. Periwinkle or Trailing Myrtle. An excellent dwarf trailing plant for carpeting the ground where it is too shady for other plants to thrive. \$1.00 per doz.; \$7.75 per 100.

Perennial and Biennial Seeds and Plants

PLANTS. We can supply large field-grown plants ready to be transplanted, after August 15th.

PRICES (except where otherwise noted) ON ALL VARIETIES OF PLANTS: 20 cts. each; 3 for 50 cts.; 6 for 90 cts.; \$1.75 per doz. of one variety.

POSTAGE ON PLANTS. Add postage as follows: Single plants, 5 cts.; 3 plants, 10 cts.; 6 plants, 15 cts.; 12 plants, 25 cts. We accept no responsibility for delays or conditions that may prove injurious to the contents.



Chrysanthemum

ALYSSUM (HARDY YELLOW)

SAXATILE COMPACTUM. Broad masses of bright yellow flowers in early spring. For rockeries or front of borders. 1 foot. Pkt. 10 cts.; ¼ oz., 20 cts.; oz., 75 cts. Plants.

ANEMONE JAPONICA (Japanese Windflower)

QUEEN CHARLOTTE. Large semi-double flowers of "La France" pink. Grows well in shade, a good cut-flower. 2 feet.

WHIRLWIND. Similar to above, but pure white. Plants of either variety, 25 cts. each; 3 for 65 cts.; 6 for \$1.25; \$2.25 per doz.

ASTER (HARDY)

(Michelmas Daisy). Lovely, daisy-like flowers, 4 to 5 ft. high; blooming September and October. Climax, blue violet; Barr's Pink, bright pink. Plants.

Perennial Aster Seed. Choice mixed. Pkt. 10 cts.; ¼ oz., 35 cts.; ¼ oz., 65 cts.

NEW DWARF ASTERS. Very desirable for the rock garden and for borders. Free flowering. They bloom during September and October, making them a valuable addition to any garden.

Countess of Dudley. Clear pink with yellow eye. Blooms during September. Height, 9 inches.

Little Boy Blue. Blue; blooms in early September. Height, about 1 foot.

Victor. The dwarfest of them all. Beautiful lavender-blue flowers in September. Height, 6 to 9 inches. Plants.

BLEEDING HEART. DICENTRA SPEC-TABILIS. Long graceful racemes of heart shaped rose crimson flowers. Plants, 30 cts. each.

BLEEDING HEART. DICENTRA FORMOSA. (False Bleeding Heart.) The foliage is fern-like and remains attractive all summer. The heart-shape flowers are pink. Plants.

CANDYTUFT (Hardy). May and June; 6 inches. Evergreen plants covered with white or pale pink blooms in spring and early summer. Excellent for rockeries or borders. Seed, pkt. 10 cts.; ¼ oz. 40 cts. Plants.

COLUMBINE (Aquilegia). 1 to 2 feet. May until July.

CHRYSANTHA (Golden Columbine). Yellow flowers with long spurs.

GLEBEWOOD PINK. Extra long spurred. Large flowered. Pink.

MRS. SCOTT ELLIOTT. Long spurred Hybrids. Pastel shades; mixed. Seed, pkt. 10 cts.; ¼ oz. 30 cts.; ¼ oz. 50 cts. Plants.

COREOPSIS GRANDIFLORA. 1 to 2 feet. June to October. During the summer bears profusely golden yellow flowers which are very useful for cutting. Seed, pkt. 10 cts.; ¼ oz. 30 cts.; oz. \$1.00. Plants.

CHRYSANTHEMUM PLANTS

Single Flowering Varieties

Attraction Pink
Crimson Splendor Red
Dazaria New Pale Pink
Mrs. Wm. F. Buckingham..... Salmon Pink

Button Varieties

Alice Barnham Bronze
Model of Perfection White
Pink Dot Pink
Yellow Gem Deep Yellow

Pom Pon Varieties

Amelia (Pink Cushion-Azaleamum).... Pink
Crimson Sheen Crimson
R. M. Hatton Yellow

Large Flowering Varieties

Indian Bronze Red
James Hampton Cream
Sea Shell Shell Pink
Yellow Diana Yellow

DAISY, SHASTA ALASKA. Large white flowers with a yellow center that make a splendid show all summer. Useful for cutting. Seed, pkt. 10 cts.; ¼ oz. 40 cts. Plants.

DIANTHUS PLUMARIUS (Pheasant's Eye Pink). Sweet scented, low growing, hardy fringed flowers; pink or white. Blooms in early summer. Seed, pkt. 10 cts.; ½ oz. 30 cts.; oz. 50 cts. Plants.

PRICES (except where otherwise noted) ON ALL VARIETIES OF PLANTS: 20 cts. each; 3 for 50 cts.; 6 for 90 cts.; \$1.75 per doz. of one variety.

DIGITALIS (Foxglove Mixed). The plants grow three feet high and bear long spikes of thimble-shaped flowers, brilliantly colored and spotted. If planted in well-drained soil will thrive nicely. Seed, pkt. 10 cts.; ½ oz. 40 cts.; oz. 75 cts. Plants.

EUPATORIUM (Hardy Ageratum or Mist Flower). A pretty hardy plant, with light blue flowers similar to the Ageratum. This is a particularly fine thing in hardy perennials; a splendid cut flower; 18 to 24 inches. Plants only.

DELPHINIUM (PERENNIAL LARKSPUR)

CHINENSIS MIXED. Although a perennial, this will bloom in August if planted in early spring. On account of its dwarfness (2 to 3 feet high) and brilliant blue and white flowers, it is a popular plant for bedding and cut flowers. Seed, pkt. 10 cts. and 25 cts.; ½ oz. 40 cts. Plants.

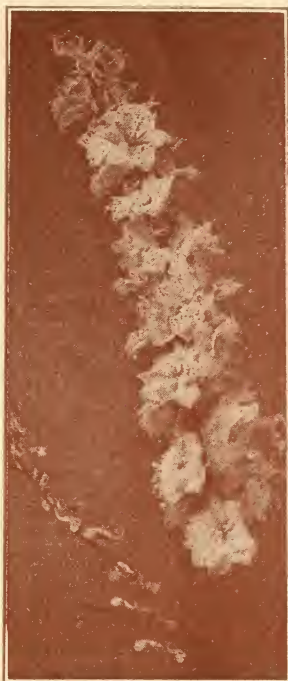
GOLD MEDAL HYBRIDS. Mixture of the most beautiful tall, large flowering varieties. The long, graceful spikes of harmonizing blue colors make a splendid background. Height, 4 to 6 feet. Seed, pkt. 10 cts.; ¼ oz. 40 cts. Plants, 25 cts. each; 3 for 70 cts.; 6 for \$1.25; \$2.25 per doz.

BELLADONNA. Tall, light blue. Seed, pkt. 15 cts.; ½ oz. 40 cts. Plants.

BELLAMOSUM. A dark blue form of Belladonna with which it is identical excepting in color, which is a rich deep blue. Seed, pkt. 15 cts.; ½ oz. 40 cts. Plants.

FEVERFEW

SNOW BALL. A most useful border plant and valuable summer cut flower, with large double, white flowers. June to October. 18 to 21 inches. Pkt. 10 cts.; ¼ oz. 15 cts.; oz. 50 cts. Plants.



Delphinium



Digitalis (Fox Glove)

GAILLARDIA

GRANDIFLORA. June to October; 2 feet. The beautiful single flowers are red in the center with clear yellow markings on outer edges of petal. Pkt. 10 cts.; ½ oz. 40 cts.; oz. 75 cts. Plants.

DAZZLER. A new dazzling bright variety with larger blooms than the old one. Pkt. 10 cts.; ½ oz. 60 cts.; oz. \$1.00. Plants.

HIBISCUS

MALLOW MARVELS MIXED. 5 to 8 feet. June to September. Giant blooms of pink, white and red, frequently 6 to 8 inches in diameter. Unsurpassed for a background or hedge. Pkt. 10 cts.; ¼ oz. 15 cts.; oz. 50 cts. Plants.

HOLLYHOCKS

6 to 8 feet; August to September. One of the most showy of all hardy garden plants, producing majestic spikes of large double or single blossoms, measuring 3 to 4 inches across.

Plants may be had in crimson, maroon, Newport pink, salmon, white or yellow. Seed, pkt. 10 cts.; ¼ oz. 35 cts.; oz. \$1.25.

LINUM PERENNE

(Flax)—Blue flowers, borne on stems 1 foot; June through September. Plants. Seed, pkt. 10 cts.; ½ oz. 20 cts.; oz. 35 cts.

HARDY PHLOX

One of the most important perennials. Produces large heads of fragrant flowers from early July to September. Height, 1½ to 3 feet:

CAROLINE VANDENBURG. Lavender blue.

ENCHANTRESS. Bright salmon pink.

EUROPA. White, pink center.

HAUPTMAN KOEHL. Blood red.

LOUISE ALBEMA. White.

MISS LINGARD. Tall, pure white.

ROKOKO. Large, clear soft pink.

R. P. STRUTHERS. Bright cherry red. Plants, 20 cts each; \$2.00 doz.

HARDY PERENNIAL PHLOX SEED MIXED. Pkt. 10 cts.; ¼ oz. 60 cts.; oz. \$2.00.

PRICES (except where otherwise noted) ON ALL VARIETIES OF PLANTS: 20 cts. each; 3 for 50 cts.; 6 for 90 cts.; \$1.75 per doz. of one variety.



Bolgiano's Trimardeaux Pansies

CREeping PHLOX

SUBULATA (Moss or Mountain Pink). An early Spring-flowering type with pretty moss-like, evergreen foliage, which, during the flowering season, in April and May, is hidden under the masses of bloom. An excellent plant for the rockery, border, and for carpeting the ground.

ALBA. White.

G. F. WILSON. Rich blue.

VIVID. Bright pink.

BOLGIANO'S PANSY SEED

ROGLI GIANTS. A very select strain noted for its robust habit and early flowering. The extremely large flowers of heavy texture are held well above the foliage on long, strong stems. The range of rich dark colors is perfectly wonderful. Seed, pkt. 25 cts.; $\frac{1}{2}$ oz. 75 cts.; oz. \$5.50.

EXHIBITION GIANTS. The most beautiful forms and color combinations imaginable. Flowers attain a size of 2 to 3 inches under favorable conditions. Seed, pkt. 20 cts.; $\frac{1}{2}$ oz. 65 cts.; oz. \$5.00.

GIANT TRIMARDEAUX MIXED. Beautiful color combinations. Each flower has three blotches of color, and attains great size. Seed, pkt. 10 cts.; $\frac{1}{4}$ oz. 30 cts.; oz. \$1.00.

EXHIBITION PANSY PLANTS

A mixture of the finest color combinations and attractive forms of **GIANT EXHIBITION PANSIES**. Very large Plants, 10 cts. each; per doz. \$1.00. Transplanted plants for setting out this fall for spring blooms, 50 for \$1.00; \$1.75 per 100.

PLATYCODON

JAPANESE BELL FLOWER grows 2 to 2 $\frac{1}{2}$ feet high with attractive blue or white flowers from July to October. Plants only.

PLUMBAGO

LARPENTAE. One of the most desirable border and rock plants. It is of dwarf, spreading habit, growing 6 to 8 inches high, covered with broad, thick foliage and large deep violet-blue flowers. Plants only.

POPPY (ORIENTAL)

Three feet; May and June. Flowers of gorgeous brilliancy.

SCARLET QUEEN. Brilliant scarlet.

MRS. PERRY. Apricot pink.

OLYMPIA. Double salmon orange.

PERRY'S WHITE. Pure white with maroon blotch.

Plants. 25 cts. each; \$2.75 per doz.

ICELAND POPPY SEED MIXED. Pkt. 10 cts.; $\frac{1}{8}$ oz. 20 cts.; $\frac{1}{4}$ oz. 35 cts.; oz. \$1.25.

ORIENTAL POPPY SEED MIXED. Pkt. 10 cts.; $\frac{1}{4}$ oz. 35 cts.; oz. \$1.25.

PRIMULA

VERIS. Hybrids. Plants all yellow or red with yellow eye. Plants only.

PYRETHRUM (PAINTED DAISY)

Produces charming white, pink and rose colored daisy-like flowers from April through June. Pkt. 10 cts.; $\frac{1}{4}$ oz. 15 cts.; oz. 50 cts. Plants.

SWEET WILLIAM

Newport Pink (Watermelon Pink). Pkt. 10 cts.; $\frac{1}{4}$ oz. 25 cts.; $\frac{1}{2}$ oz. 40 cts.; oz. 75 cts.

Scarlet Beauty. Bright scarlet; single. Pkt. 10 cts.; $\frac{1}{4}$ oz. 25 cts.; $\frac{1}{2}$ oz. 40 cts.; oz. 75 cts.; $\frac{1}{4}$ lb. \$2.50.

White (Double). Pkt. 10 cts.; $\frac{1}{2}$ oz. 25 cts.; oz. 40 cts.

Single Mixed. Pkt. 10 cts.; $\frac{1}{2}$ oz. 20 cts.; oz. 30 cts.; $\frac{1}{4}$ lb. 90 cts.; lb. \$3.00.

Double Mixed. Pkt. 10 cts.; $\frac{1}{2}$ oz. 30 cts.; oz. 50 cts. Plants of all varieties.

PERENNIAL VINES

BOSTON IVY. Fast growing, clings to brick or stone. 25 cts. each; \$2.00 per doz.

BITERSWEET. *Celastrus Articulatus*. The oriental variety. Is covered with orange-yellow berries in the fall. Superior to the usual domestic variety. 25 cts. each; \$2.00 per doz.

CLEMATIS PANICULATA. Strong rapid growth pure white fragrant flowers, 25 cts. each; 6 for \$1.25; \$2.00 per doz.

CLEMATIS. Jackmani. Large, rich purple blossoms. Plants. 75 cts. each.

ENGLISH IVY. $2\frac{1}{4}$ -inch pots. 10 cts. each; \$1.00 per doz.

SILVER LACE VINE. White flower sprays in profusion in fall. Plants. 75 cts. each.

VIRGINIA CREEPER. Quick growing variety for covering trellises, old stumps, etc. Foliage turns yellow-crimson and scarlet in the fall. 25 cts. each; \$2.00 per doz.

WISTERIA. *Sinensis*. Two years old. 2 to 3 feet high. Produces early in the Spring thousands of pendulous clusters of delicate violet-blue blossoms.

WISTERIA ALBA. Same as above, only pure white.

Either of above, 75 cts. each.



Sweet William

Roses for Fall Planting

FALL IS THE BEST TIME TO PLANT
Strong 2-Year-Old Field-Grown Stock

Our stock is budded on Japonica Multiflora roots which are conceded to be the best stock for budding roses on by most of the leading rose growers. These roses will start right off into vigorous growth and bloom lavishly next summer.

SIX NEW EVERBLOOMING VARIETIES, 75 cts. each; \$4.00 for the 6

All real rose fanciers will be delighted with these six new everblooming varieties that we have selected for this collection. They will produce for you in your garden a great quantity of lovely blooms in a marvelous array of beautiful colors.

AMI QUINARD. Velvety crimson-maroon with soft black lustre. Does not fade. The petals become darker as the bloom ages.

CALADONIA. A fine new variety. Large, long pointed buds with a high center; very fragrant white flowers.

CONDESA de SASTAGO. A striking color combination of golden yellow and coppery pink. Both in bud and full flower it is a perfect beauty.

GOLDEN DAWN. Well formed, sweet scented, large, double, Sunflower yellow.

HILDA. Color resembles Betty Uprichard, but the flower is much larger with many more petals. Two-tone pink. Plants are very vigorous; blooms most floriferous.

SOEUR THERESE (Sister Therese). Yellow. The long, tapering buds are chrome-yellow heavily marked with carmine. When open the flower is a deep yellow, sweetly scented and held on excellent cutting stems. Universally accepted as one of the best of the newer roses.



OLD STANDARD POPULAR VARIETIES, 60 cts. each; \$5.50 for 10
Also Some Recent Introductions, All Everblooming.

BETTY UPRICHARD. Copper red buds, with orange-carmine.

BRIARCLIFF. Fine, handsome flowers of silvery rose-pink.

CHARLES K. DOUGLAS. Bright crimson-scarlet.

CHARLES P. KILHAM. Brilliant orange, suffused with golden scarlet; vigorous, bushy, upright.

DUCHESS OF WELLINGTON. Enormous tapering buds of golden orange slowly opening to very large saffron-colored blooms. Fragrant.

EDITH NELLIE PERKINS. Salmon pink, flushed orange.

EDITOR McFARLAND. Solid glowing pink, suffused yellow.

E. G. HILL. Dazzling red. Very fine cut-flower.

ETOILE DE HOLLAND. Velvety crimson-rose, of good size.

GRENOBLE. Scarlet crimson. One of the most vigorous growing crimson roses. Blooms continuously on long stems.

JOANNA HILL. Deep creamy yellow. Beautiful long, pointed buds.

KAISERINE AUGUSTA VICTORIA. Soft pearly white, opening to a large very double white.

MARGARET McGREDY. Orange-scarlet.

One of the most satisfactory garden roses in existence; very strong grower.

MEVROUW G. A. van ROSSEM. Glowing apricot overlaid yellow. Sweet scented.

MME. BUTTERFLY. Pink and gold. Exquisite buds. Fragrant, free flowering.

MRS. ERSKINE PEMBROKE THOM. Long pointed yellow buds, well shaped blooms of clear canary yellow.

MRS. PIERRE S. duPONT. Medium-sized, long, pointed buds of a reddish gold opening to semi-double, cupped, very lasting, fragrant flowers of a deep golden yellow.

PRES. HERBERT HOOVER. A lovely blend of orange and pink.

RADIANCE. Brilliant rose-pink.

RED RADIANCE. Deep rose-red.

SYRACUSE. Large, double, crimson-scarlet flowers.

SOUV DE CL. PERNET. Fadeless yellow-rose.

SOUV DE GEORGE PERNET. Oriental red; beautiful.

SOUV DE MME. C. CHAMBARD. Large, long pointed coral buds, opening to a satiny peach, very fragrant.

TALISMAN. Gold, apricot-yellow, deep pink and old rose.

WILLOWMERE. Brilliant pink flowers, suffused golden.

CLIMBING ROSES, 60 cts. each; \$5.50 for 10

DR. W. VAN FLEET. Pale pink buds and flowers borne on individual stems. A splendid rose for cutting.

EMILY GRAY. Beautiful pale orange yellow. Long pointed buds.

JACOTTE. A deep orangy yellow, tinted coppery red.

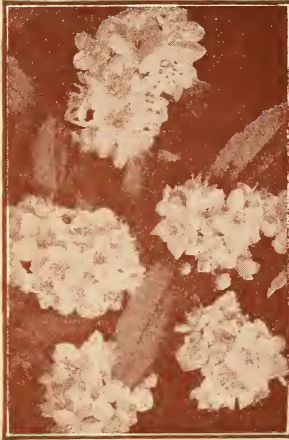
LADY ASHTOWN. Everblooming; pink.

PAULS SCARLET. Clear vivid scarlet.

SCORCHER. A brilliant red.

Shrubs and Evergreens

Prices quoted include delivery in Washington, D. C., and vicinity. We do not ship Nursery Stock. We handle first class stock only, but as there are so many conditions upon which successful growth is dependent, and over which we have no control, we cannot guarantee Nursery Stock.



Deutzia, Gracilis

tulips bloom. The plant is shrub-like with attractive foliage. 4 to 5 feet, \$1.00.

HYDRANGEA. *Arborescens Grandiflora.* Early white almost round heads of flowers. 2 to 3 feet, 50 cts. each; 3 to 4 feet, 75 cts.

HYDRANGEA "PEE GEE." The old-time variety. 2 to 3 feet, 50 cts. each; 3 to 4 feet, 75 cts. each.

BLUE OR PINK HYDRANGEAS. *Otakas.* 18 to 24 inches, 75 cts.; 2 to 3 feet, \$1.00.

JAPANESE QUINCE. *Cydonia.* Sometimes called "Japonica." Scarlet flowers early in the spring. 2 to 2½ feet, 60 cts.; 2½ to 3 feet, 75 cts.

LILACS. Old fashioned white or purple. 2 to 3 feet, 60 cts.; 3 to 4 feet, 75 cts.

LILACS. French Hybrids. Larger panicles, richer coloring.

Pres. Grevy. Light blue.

Souvenir de Ludwig Spaeth. Dark purple.

Madam Marie de Graye. Pure white.

Madam Lemoine. Large double white.

The above four varieties, 2 to 3 feet, 75 cts.; 3 to 4 feet, \$1.00; 4 to 5 feet, \$1.50; 5 to 6 feet, \$2.00.

MOCK ORANGE. *Virginal.* Flowers 2 inches in diameter, that completely cover the branches in May and early June, slightly fragrant, one of the most desirable. 2 to 3 feet, 60 cts.; 3 to 4 feet, 75 cts.

RUGOSA ROSE. A shrub rose. Dark, crinkled foliage. Pink, white or red roses and red fruits. Blooms all summer. 18 to 24 inches, 50 cts.; 2 to 3 feet, 75 cts.

SNOWBALL. *Viburnum opulus sterilis.* Old-time variety, large white balls in May or June. 2 to 3 feet, 50 cts.; 3 to 4 feet, 75 cts.

JAPANESE SNOWBALL. *V. plicatum* Larger blooms, pure white. 3 to 4 feet, 75 cts. each.

VIBURNUM CARLESI. Fragrant *viburnum.* A semi-dwarf flowering shrub. The flower clusters, which are white shaded pink, are very fragrant. Blooms in May. It produces reddish-orange berries in the fall. 2 to 3 feet, \$2.25 each; 3 to 4 feet, \$3.00 each.

ALTHEA. *Rose of Sharon.* Blooms from July until October. Double pink, white, and violet red. 3 to 4 feet, 50 cts.; 4 to 5 feet, 75 cts.

BUTTERFLY BUSH. Long spikes of violet mauve flowers from July to frost. Extra strong 2-year plants, 50 cts.

BEAUTY BERRY. Brilliant lilac-violet berries in September and October. 3 to 4 feet, 75 cts.; 4 to 5 feet, \$1.00.

BEAUTY BUSH. Pale pink flowers with orange veins in throat. 3 to 4 feet, 60 cts.; 4 to 5 feet, 75 cts.

CALYCANTHUS FLORIDUS. Sweet Smelling Shrub. 2 to 3 feet, 50 cts.; 3 to 4 feet, 60 cts.

CREPE MYRTLE. Red or pink, 18 to 24 inches, 75 cts.; 2 to 3 feet, \$1.00.

DUETZIA. *Pride of Rochester.* Large double white flowers tinged with rose. 2 to 3 feet, 50 cts.; 3 to 4 feet, 60 cts.

DUETZIA. *Gracilis.* Dwarf, compact, with many white sprays of flowers; in May. 15 to 18 inches, 50 cts.; 18 to 24 inches, 60 cts.

FORSYTHIA SUSPENS. *Weeping Golden Bell.* A tall shrub of willowy growth. Graceful arching branches with golden bells in early spring. 2 to 3 feet, 60 cts.; 3 to 4 feet, 75 cts.

FORSYTHIA VIRIDISSIMA. *Golden Bell.* Strong erect habit; bright yellow bell-like flowers in early spring. 2 to 3 feet, 50 cts.; 3 to 4 feet, 60 cts.

HUGONIS. *Golden Rose of China.* Fragrant, soft yellow, silken flowers in yard long sprays when the late

SPIREA. *Anthony Waterer.* Dwarf crimson flowers all summer. 18 to 24 inches, 50 cts.; 2 to 2½ feet, 75 cts.

SPIREA. *Prunifolia.* *Bridal wreath.* Early, white double flowers. 2 to 3 feet, 50 cts.; 3 to 4 feet, 75 cts.

SPIREA. *Van Houtteii.* The most popular variety. May-June. 2 to 3 feet, 50 cts.; 3 to 4 feet, 65 cts.; 4 to 5 feet, 75 cts.

SPIREA. *Thunbergii.* Fine leaved foliage, arching branches, long sprays of white flowers in early spring. 18 to 24 inches, 50 cts.; 2 to 3 feet, 75 cts.; 3 to 4 feet, \$1.00.

WEIGELIA. Beautiful, free blooming shrubs, much used in borders and as specimen plants for the lawn.

Rosea. White to pink flowers in May or June. 2 to 3 feet, 50 cts.; 3 to 4 feet, 70 cts.

Eva Rathka. One of the most valuable. Flowers deep carmine red. June and July, 2 to 3 feet, 50 cts.; 3 to 4 feet, 75 cts.

HEDGE PLANTS

JAPANESE BARBERRY. The best and most practical low hedge plant. It also makes a good footing or base planting near the house, or as a border plant in front of tall growing shrubs. They can be allowed to grow naturally or pruned into any hedge form desired.

	Per 10	Per 100
12 to 15 in.....	\$1.50	\$12.00
15 to 18 in.....	2.25	17.50
18 to 24 in.....	3.00	22.00

CALIFORNIA PRIVET. The best known hedge plant. Dark green foliage which hangs to the plant until midwinter.

	Well Branched, Heavy Stock	
	Per 10	Per 100
1½ to 2 feet.....	\$.75	\$4.50
2 to 2½ feet.....	1.15	7.50



Lombardy Poplar

ORNAMENTAL AND SHADE TREES

AMERICAN ELM. Graceful high arching branches, leaving good space above roof for air and diffused light. 8 to 10 feet, \$1.50; 10 to 12 feet, \$2.00.

CHINESE ELM. Grows rapidly to a good height. Develops a broader base than the American type. The foliage is small and dense. The growth symmetrical and compact. 5 to 6 feet, \$1.50; 6 to 8 feet, \$2.00; 8 to 10 feet, \$2.50.

DOGWOOD. Everyone knows and loves the Dogwood. It needs no description. Pink flowering. 2 to 3 feet, \$1.75; 3 to 4 feet, \$2.75.

DOGWOOD. White flowering. 2 to 3 feet, \$1.00; 3 to 4 feet, \$1.50; 4 to 5 feet, \$2.00; 5 to 6 feet, \$3.00.

FLOWERING CRAB. Floribunda. One of the best of the flowering Crabs. The buds are a warm rose color opening to light pink flowers—the whole forming a shapely bush or small tree. 4 to 5 feet, \$1.50; 5 to 6 feet, \$2.00.

JAPANESE CHERRY KWANZAN. The flowers are very full and double, deep pink or old rose. The buds are red. The blossoms are very fragrant and borne in clusters. Blooms just after the Yoshino. 4 to 5 feet, \$2.00; 5 to 6 feet, \$3.00.

JAPANESE CHERRY YOSHINO. One of the loveliest of all and the kind that gives that magnificent sweep of pink color along the Tidal Basin at Washington, when "Cherry Time" draws its thousands of flower-lovers to the Capital. Fast growing and widespread, the early flowers very dense on the branches; buds red, the single flowers bluish pink maturing to white with a purplish pink center. 4 to 5 feet, \$2.00; 5 to 6 feet, \$3.00.

LINDEN. American. Grows 75 to 90 feet. A stately tree with large shining cordate leaves. Valuable for its beautiful white wood. Fragrant yellow flowers in July. 6 to 8 feet, \$1.75; 8 to 10 feet, \$2.50.

LOMBARDY POPLAR. Tall columnar tree, attaining a height of 60 feet. Used for formal plantings and screens. 6 to 8 feet, 75 cts. each, \$6.50 for 10; 8 to 10 feet, \$1.15 each, \$9.50 for 10.

MAGNOLIA GRANDIFLORA. 3 to 4 feet, \$3.00; 4 to 5 feet, \$4.50.

MAGNOLIA SOULANGEANA. A hardy Chinese species. beautiful cup-shaped flowers 3 to 5 inches in diameter, white

inside, flushed with pink outside. 2 to 3 feet, \$3.00; 3 to 4 feet, \$4.00.

MAPLE. Silver. The fastest growing maple. Prune to a single stem for best form. 6 to 8 feet, \$1.25; 8 to 10 feet, \$1.75; 10 to 12 feet, \$2.50.

MAPLE. Norway. The best maple shade tree. Rapid grower. Leaves yellow in fall. 6 to 8 feet, \$2.00; 8 to 10 feet, \$3.00; 10 to 12 feet, \$4.00.

ORIENTAL PLANE. 80 feet. Thrives in all soils, even water side; wide spreading. Peculiarly attractive in winter when it sheds its bark. 6 to 8 feet, \$2.00; 8 to 10 feet, \$3.00.

PIN OAK. Sharply cut leaves, weeping lower branches. A good street tree. 6 to 8 feet, \$1.75; 8 to 10 feet, \$2.50.

RED OAK. Deep rooting. Easy to grow grass under. 6 to 8 feet, \$3.00; 8 to 10 feet, \$4.00.

RED-LEAVED JAPANESE MAPLE. The most conspicuous of the medium-sized shrubs or small trees. Their beautiful shape and brilliant red foliage add color and variety to the landscape during spring and early summer. Strong plants, 15 to 18 inches high, \$2.00; 18 to 24 inches, \$3.00; 2 to 2½ feet, \$4.50.

BROAD LEAVED EVERGREEN SHRUBS

ABELIA GRANDIFLORA. Bush Arbustus. An evergreen shrub, with dark green glossy leaves, becoming bronze colored in winter. Flowers white, funnel-shaped, tinged with pink, delicately sweet scented, borne in clusters from early spring until later autumn. 18 to 24 inches, 75 cts. each; 2 to 3 feet, \$1.00 each.

AZALEA AMOENA. Purple Azalea. 8 to 10 inches, \$1.00; 10 to 12 inches, \$1.50; 12 to 15 inches, \$1.75.

AZALEA. Hinodegiri. Low growing, brilliant scarlet flowers with evergreen leaves; 6 to 8 inches, \$1.00; 8 to 10 inches, \$1.50; 10 to 12 inches, \$1.75.

AZALEA SNOW. Pure white. 8 to 10 inches, \$1.50; 10 to 12 inches, \$1.75.

BOXWOOD. Sempervirens. The faster growing variety. 12 to 15 inches, \$1.00; 15 to 18 inches, \$1.50; 18 to 21 inches, \$2.00; 21 to 24 inches, \$3.00.

BOXWOOD. Suffruticosa or Old English Box. 4 to 5-inch edging, 10 cts. each, \$9.00

per 100; 5 to 6-inch, 15 cts. each, \$14.00 per 100; 6 to 8-inch (heavy stock), 30 cts. each, \$25.00 per 100; 8 to 10-inch, 50 cts. each; 10 to 12-inch, 75 cts. each; 12 to 15-inch, \$1.00 each.

MOUNTAIN LAUREL. 15 to 18 inches, \$1.75; 18 to 24 inches, \$2.00; 2 to 2½ feet, \$3.00.

NANDINA DOMESTICA. Heavenly Bamboo. Upright, reedlike growth, shiny green leaves which turn brilliant scarlet in fall. Red berries produced at the same time make a combination which is unusual and beautiful. The leaves stay on all winter. 12 to 15 inches, 75 cts.; 15 to 18 inches, \$1.00.

RHODODENDRON. Catawbiense. Large, purple flowers. 18 to 24 inches, \$2.50; 2 to 2½ feet, \$3.50.

Maximum. Large, white flowers. 18 to 24 inches, \$2.00; 2 to 2½ feet, \$3.00.

Carolinianum. Pink, 18 to 24 inches, \$2.50; 2 to 2½ feet, \$3.75.



Arborvitae

LOW GROWING EVERGREENS

ARBORVITAE. Globe. Dense globe-shaped, dark green foliage. Used in large tubs or for foundation planting. 15 to 18 inches, \$1.00.

ARBORVITAE. Tom Thumb. Low and broad with feathery gray-green foliage. 2 to 2½ feet, \$1.75; 2½ to 3 feet, \$2.50.

BIOTA AUREANA. A dwarf pyramidal-shaped evergreen, with gold tipped foliage. 12 to 15 inches, \$2.50; 15 to 18 inches, \$3.00; 18 to 24 inches, \$4.00; 2 to 3 feet, \$5.00.

DEPRESSA PLUMOSA. Purple Spreading Juniper. 15 to 18 inches, \$1.00; 18 to 24 inches, \$1.50; 2 to 2½ feet, \$2.00.

JUNIPERUS PFITZERIANA. Low spreading, dark green branches. Very effective when used among other types in the foundation planting. 15 to 18 inches, \$1.50; 18 to 24 inches, \$2.00; 2 to 2½ feet spread, \$3.00.

JUNIPERUS STRICTA. Greek Juniper. Always keeps its neat pyramidal shape. Spiny silvery green foliage. 15 to 18 inches, \$1.50; 18 to 24 inches, \$2.00; 2 to 2½ feet, \$2.50.

MUGHO PINE. Japanese Dwarf Pine. Gray foliage, compact, very ornamental. 15 to 18 inches, \$1.50; 18 to 24 inches, \$2.00.

YEW JAPANESE SPREADING (Taxus Cuspidata). The beautiful upright Japanese Yew, moderately bushy growth. Branches densely clothed with short leaves of dull green. 12 to 15 inches, \$1.50; 15 to 18 inches, \$2.00; 18 to 24 inches, \$3.00.

TALL GROWING EVERGREENS

ARBORVITAE. American. Tall rapid grower. 3 to 4 feet, \$1.75; 4 to 5 feet, \$2.25; 5 to 6 feet, \$3.00; 6 to 7 feet, \$4.00.

ARBORVITAE ELEGANTISSIMA. Golden Tipped. 2 to 3 feet, \$1.25; 3 to 4 feet, \$1.75; 4 to 5 feet, \$2.50; 5 to 6 feet, \$3.50.

ARBORVITAE PYRAMIDAL. Darker green, denser foliage and more slender of shape. 2½ to 3 feet, \$1.50; 3 to 4 feet, \$2.00; 4 to 5 feet, \$2.75; 5 to 6 feet, \$3.25; 6 to 7 feet, \$4.50.

VIRGINIA RED CEDAR. From 3 to 4 feet, \$1.75; 4 to 5 feet, \$2.50; 5 to 6 feet, \$3.00.

IRISH JUNIPER. Tall, narrow spires of blue-green foliage. Fast growing. 4 to 5 feet, \$2.00; 5 to 6 feet, \$2.75.

RETINOSPORA PLUMOSA. Graceful plume-like foliage of a pretty green. 2 to 3 feet, \$1.50; 3 to 4 feet, \$2.00; 4 to 5 feet, \$3.00.

RETINOSPORA PLUMOSA AUREA. Golden Tipped. 2 to 3 feet, \$1.50; 3 to 4 feet, \$2.00; 4 to 5 feet, \$3.00; 5 to 6 feet, \$4.00.

RETINOSPORA SQUAROSA (Silver Cypress). Silvery gray foliage; gives a very soft and pleasing effect. 2 to 2½ feet, \$1.50; 2½ to 3 feet, \$2.50.

AUSTRIAN PINE. Broad-based, heavily needled, massive; darkest and richest green of the Pines. 3 to 4 feet, \$3.50; 4 to 5 feet, \$4.50.

SCOTCH PINE. A quick grower particularly suited for screen, windbreaks and mass planting. 3 to 4 feet, \$2.50; 4 to 5 feet, \$3.50.

SPRUCE. Norway. Rapid grower; fine shape; dark green foliage. Excellent for windbreaks or screen. 15 to 18 inches, 50 cts.; 2 to 3 feet, \$1.00; 3 to 4 feet, \$1.50; 4 to 5 feet, \$2.00; 5 to 6 feet, \$2.50.

SPRUCE. Colorado Blue. 18 to 24 inches, \$2.00; 2 to 2½ feet, \$3.00; 2½ to 3 feet, \$4.50.

SPRUCE. Koster Blue. 15 to 18 inches, \$3.00; 18 to 24 inches, \$4.00; 2 to 2½ feet, \$5.00.

HEMLOCK. Best evergreen for the shade. Will stand close shearing and makes a good hedge. 18 to 24 inches, \$1.75; 2 to 3 feet, \$2.50; 3 to 4 feet, \$3.75; 4 to 5 feet, \$4.50; 5 to 6 feet, \$6.50.

LIVING CHRISTMAS TREES

Norway Spruce and Balsam Firs
All Sizes - Low Prices

Planted in strong, painted green tubs. These can be trimmed and used indoors during the Christmas season. They can then be planted outdoors, making a lasting evergreen to beautify your home grounds. Delivered any time between Dec. 15th and Dec. 25th.

Hyper-Humus Nature's Own Soil Enricher

An ideal top dressing—makes heavy soils light and porous, light soils heavy, promotes plant development. No odor. No weeds. 5 lbs. 20 cts.; 10 lbs. 30 cts.; 25 lbs. 50 cts.; 100 lbs. \$1.75; ton \$25.00.

WIZARD BRAND SHEEP MANURE

No matter what you grow—fruit, vegetables and grain, or just shrubbery, flowers or grass about the home—WIZARD BRAND SHEEP MANURE "Makes Nature Hustle," and builds up your soil at the same time. Price, 10 lbs. 40 cts.; 25 lbs. 80 cts.; 50 lbs. \$1.50; 100 lbs. \$2.50.

Well-Rotted Cow Manure

Just the kind to use around your rose bushes and other plants this Fall. 50 cts. bu.

Bone Meal Unusually rich in nitrogen and phosphoric acid, the two principal plant foods. 5 lbs. 25 cts.; 10 lbs. 40 cts.; 25 lbs. 90 cts.; 50 lbs. \$1.50; 100 lbs. \$2.50.

Fruit Department

APPLE TREES. 4 to 6 feet, 90 cts. each; \$7.50 per 10.

WINTER VARIETIES

Delicious. Fruit large, dark red, flesh fine grained, crisp and melting, juicy with a delightful aroma; annual bearer.

Stayman. Improved Winesap. Red in color. Large and more prolific.

York Imperial. Skin bright yellow. An early and good producer.

AUTUMN VARIETIES

Grimes Golden. Good size, yellow, productive, of highest quality.

SUMMER VARIETIES

Early Harvest. Medium. Pale yellow, tender, juicy.

Yellow Transparent. Earliest. White skin changing to pale yellow.

PEAR TREES. 5 to 6 feet, \$1.00 each; \$9.00 per 10.

Bartlett. The best, large eating pear.

Seckel. Small, sweet; very popular.

CHERRY TREES. 5 to 6 feet, \$1.15 each; \$10.00 per 10.

Montmorency. Sour variety. Bears last of June.

Early Richmond. Sour, light red fruit. Bears about the middle of June.

Tartarian. Large, sweet, black cherries; in June.

Napoleon. Large, sweet; midseason; good quality.

PEACH TREES. 4 to 5 feet, 90 cts. each; \$7.50 per 10.

Carman. White flesh, semi-clingstone. Early and large.

Belle of Georgia. Large white flesh; freestone.

Elberta. Large, yellow flesh; freestone. A few days later than Belle of Georgia.

PLUM TREES. 5 to 7 feet, \$1.00 each; \$9.00 per 10.

Abundance. The popular early cherry-red Japanese Plum.

Burbank. A well-known dark red early variety. (Japanese.)

GRAPE VINES. Concord (the standard black). Niagara (white). Moores Early (large black). Lucile (light red wine grape). 30 cts.; 6 for \$1.50. Caco (large wine red berries), 40 cts. each.

Bulb Pans and Flower Pots

	Ea.	Doz.		Ea.	Doz.
2-inch....	\$.02½	\$.20	7-inch....	\$.16	\$1.75
3-inch....	.03	.30	8-inch....	.22	2.50
4-inch....	.04	.40	9-inch....	.33	3.75
5-inch....	.07	.75	10-inch....	.45	5.15
6-inch....	.10	1.10	12-inch....	.90	9.90

Saucers

	Ea.	Doz.		Ea.	Doz.
4-inch....	\$.03	\$.30	8-inch....	\$.10	\$1.20
5-inch....	.04	.40	9-inch....	.12	1.60
6-inch....	.06	.55	10-inch....	.23	2.50
7-inch....	.08	.85	12-inch....	.33	3.75

Cedar Plant Tubs

Virginia White Cedar painted deep green and bound with three bands heavy black wire. Two larger sizes bound with broad iron bands. Handles and feet are black iron.

	Each
8-inch, without handles.....	\$0.60
10-inch, without handles.....	0.75
12-inch, without handles.....	1.00
14-inch, without handles.....	1.50
16-inch, without handles.....	1.85
14½-inch with handles and metal feet.....	3.45
19 7/16-inch, with handles and metal feet.....	4.90

Lōma America's Finest Plant Food

You can readily see on an established lawn a vast difference in ten days after applying Loma. Apply Loma three days before you sow your grass seed and your grass will come up greener, thicker, healthier, more velvety than you have ever seen before. Loma contains all the plant food elements needed to make and maintain a beautiful lawn. Price, lb. 10 cts.; 5 lbs. 45 cts.; 10 lbs. 85 cts.; 25 lbs. \$1.50; 50 lbs. \$2.50; 100 lbs. \$4.00.

Soil-Prep The New Scientific Soil Conditioner

Soil-Prep is approximately ten times as effective as the average barnyard manures. It contains almost twice the plant food value of refined sheep manure. 5 lbs. 30 cts.; 10 lbs. 50 cts.; 25 lbs. \$1.15; 50 lbs. \$2.00; 100 lbs. \$3.50.

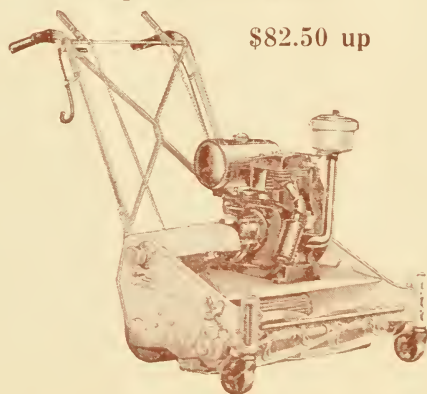
Pomo Green —with Nicotine. The leaf-green all-in-one insecticide. Use as a dust or as a spray. Lb. 75 cts.; 5 lbs. \$3.00.

Vigoro assures rich beauty in lawns and flowers. It is sanitary, odorless, and easy to use. Order enough for everything you grow—lawns, flowers, shrubs, trees, vegetables! 5 lbs. 45 cts.; 10 lbs. 85 cts.; 25 lbs. \$1.50; 50 lbs. \$2.50; 100 lbs. \$4.00.

Peat Moss Maintains proper moisture content in soil. Use for storing bulbs and tubers over dormant season; mulching flower and vegetable beds, for making lawns and keeping them in condition, and for many other purposes. Large bale, \$2.75; ½ bale, \$1.75; small bale, 89 cts.

Cooper Power Mowers

\$82.50 up



27" Imperial 20" Royal 18" Clipper

SALES — SERVICE

All makes of hand and power mowers sharpened and repaired the factory way.

Have your equipment reconditioned in the Fall and early Winter for Spring cutting, and take advantage of special off-season prices.

PLACE
STAMP
HERE

F. W. BOLGIANO & CO.

"Capitol City" Seeds

411 New York Ave. N. E. WASHINGTON, D. C.

PLEASE WRITE NAME AND ADDRESS PLAINLY

FROM

Name

Postoffice

State

Rural Route

Box No.

Street and No.

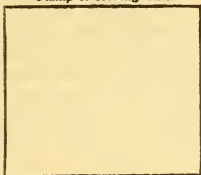
Form No. 6001

POST OFFICE DEPARTMENT
THIRD ASSISTANT POSTMASTER GENERAL
DIVISION OF MONEY ORDERS

No. _____

Stamp of Issuing Office

The Postmaster
will insert



here _____
the office drawn on, when the office named by
the remitter is in Alaska, and does not transact money order business.

Spaces above this line are for the Postmaster's record, to be filled in by him

Application for Domestic Money Order

Spaces below to be filled in by purchaser, or, if necessary,
by another person for him

Amount

_____ Dollars _____ Cents

Pay to } **F. W. BOLGIANO & CO.**
Order of }

(Name of person or firm for whom order is intended)

Whose }
Address }
Is } No. **411 N. Y. AVE. N.E.** Street

WASHINGTON,

Post }
Office } **D. C.**

State _____

Sent by _____
(Name of sender)

No. _____ Street
City }
and }
State }

PURCHASER MUST SEND ORDER AND COUPON TO PAYEE

(FOR FEES SEE OTHER SIDE)

e5-7155

Fees for Money Orders Drawn on Domestic Form

Payable in the United States, including Hawaii, Puerto Rico, and the United States Virgin Islands, or in Guam and Tutuila (Samoa); also for orders payable in Antigua, Bahamas, Barbados, Bermuda, British Guiana, British Honduras, British Virgin Islands, Canada, Canal Zone, Cuba, Dominica, Grenada, Jamaica, Montserrat, Nevis, Newfoundland, Philippine Islands, St. Kitts, St. Lucia, St. Vincent, and Trinidad and Tobago.

For Orders	From \$0.01 to \$2.50	6 cents.
	From \$2.51 to \$5.00	8 cents.
	From \$5.01 to \$10.00	11 cents.
	From \$10.01 to \$20.00	13 cents.
	From \$20.01 to \$40.00	15 cents.
	From \$40.01 to \$60.00	18 cents.
	From \$60.01 to \$80.00	20 cents.
	From \$80.01 to \$100.00	22 cents.

Memoranda of Issuing Postmaster:

If order is purchased through Rural Carrier, he will fill spaces below:

Carriers receipt No. _____

_____, Carrier.

NOTE.—The maximum amount for which a single Money Order may be issued is \$100. When a larger sum is to be sent additional Orders must be obtained. Any number of Orders may be drawn on any Money Order office on any one day.

Applications must be preserved at the office of issue for three years from date of issue.

**NARCISSUS
PAPER WHITE**

**CHARMING - FRAGRANT
BEAUTIFUL**

Their charming white flowers fill your home with delicious perfume all Fall, Winter and Spring.

**Make a Handsome Decoration
for Your Thanksgiving and
Christmas Table**

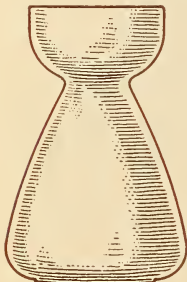
Plant a dozen Bulbs in a shallow bowl, cover with small stones and fill with water. Be sure to place in the dark for 2 weeks to develop the roots and then keep in a moderately temperate room. They require no care, no attention. They will keep on growing and produce a beautiful flowering plant. For a succession of bloom, plant at intervals of about two weeks from September to January.



Paper White Narcissus

**GROW HYACINTHS
in Glasses**

CULTURE: Hyacinths grow beautifully planted in water in specially made glasses. After Oct. 1st place bulbs in glasses filled with water so that the root plate is very close to the water but does not touch it. Place in a cool, dark spot such as a cold corner of the cellar, with a box over them to keep the light away, or in an airy, dark closet. Always keep water level to a fraction of an inch from base of bulbs. After roots reach the bottom of the glass the top growth starts, then the bud rises from the center usually 6-8 weeks after the start of culture. By all means be sure to leave them in the dark until the bud is from 2½ to 3½ in. above the bulb. Then bring to light and warmth and they will soon be marvels of beauty in full bloom. Glasses—35 cts. and 40 cts. each. Not available.



Hyacinth Glass

**NARCISSUS PAPER WHITE
GRANDIFLORA**

	Each	Doz.	100
Medium Size Bulbs.....	\$.05	\$.40	\$3.90
Large Size Bulbs.....	.06	.50	4.90
Extra Large Size Bulbs.....	.06	.60	4.50

GRAND SOLEIL D'OR

The Paper Yellow Narcissus

Rich golden yellow with deep orange cup. Very fragrant. Treat the same as the regular Paper White or can be grown in soil. 10 cts. each; \$1.10 doz.

PEBBLES—For planting Narcissus bulbs, qt. 10 cts.; 4 qts. 35 cts.

PEARL CHIPS—Beautifully colored, for planting Narcissus bulbs, 10 cts. lb.

BOLGIANO'S ESPECIALLY PREPARED BULB FIBRE is composed of Holland Peat, pulverized charcoal and crushed oyster shells. It furnishes in an assimilable form all the plant food elements needed by bulbs. Lb. 10 cts.; 3 lbs. 25 cts.

GUARANTEED SINGING CANARIES AFTER OCT. 1st