

## **Historic, archived document**

Do not assume content reflects current scientific knowledge, policies, or practices.



62.73

1923



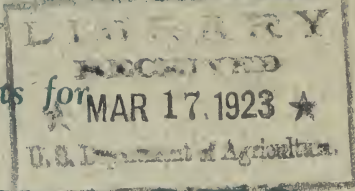
# CATALOG



Special Plants for

MAR 17 1923 ★

U. S. Department of Agriculture.



## SHADY PLACES

TERRACES

PAVED WALKS

WINDOW BOXES

### *The Planting of the Home Grounds*

Fertilizing and Seeding of Lawns

Garden Furniture

“The Barclay Tag”

Hedges

Rhododendrons and Laurel

Gardening Advice

Etc.

---

---

**HUGH B. BARCLAY, Horticulturist**

Montgomery Avenue, Narberth, Pa.

Telephone, Narberth 1623



## Foreword

**T**HE Hearthstone Nursery, Hugh B. Barclay, Owner and Manager, requests your attention to the fact that they are a New Nursery Establishment, located on Montgomery Avenue, at Narberth, Pa.

Our aims and methods are entirely distinct from the usual. We are distinctly SPECIALISTS in the line of plants we grow and sell and the class of landscape work, etc., we perform.

We have heretofore grown these plants for landscape architects only, who have used them in great quantity.

We are now prepared to furnish these plants to you at the same low rates in large quantities, and very moderate prices in small quantities, with the added attention, if you wish, of personal explanation and supervision of their planting.

Our **landscape** and other departments are entirely distinct from our nursery, and we would call special attention to such as outlined in this little booklet.

Very truly yours,

**HUGH B. BARCLAY,**  
732 Montgomery Ave.,  
Narberth, Pa.

Telephone—Narberth 1623

# Index

Plants for Shady Places  
Plants for Banks and Terraces  
Plants for Garden Edging  
Plants for Foundation Plantings  
Plants for Paved Walks  
Plants for Window Boxes  
Rhododendrons and Laurel  
Evergreens for Screen Plantings  
Hedges, Privet and Other Kinds  
Lawns, Especial Seed and Fertilizer  
Your Planting  
“The Barclay Tag”  
Garden Furniture and Pottery Ware  
Your Fencing Problems  
Gardening Advice  
Your Insect Problems  
“Melrosine”  
Bird Houses

## Our Plants

**R**EALIZING the need of landscape architects for plants that we term **GROUND-COVER PLANTS**, which they have wished to purchase reasonably so they could use them in quantity, we started a few years ago the growing of these plants primarily for their use.

It has taken some time to secure enough stock plants to propagate enough plants for the demand from this source, and until now it has not been possible for us to sell elsewhere, unless we were to retail a few plants at a high price, which is not the way to sell them, as it is necessary to use them in rather large quantities to secure good and lasting effects, and make the planting of them worth while. Our stock of plants is now sufficiently large to allow us to sell them to you at the same rates as given landscape architects.

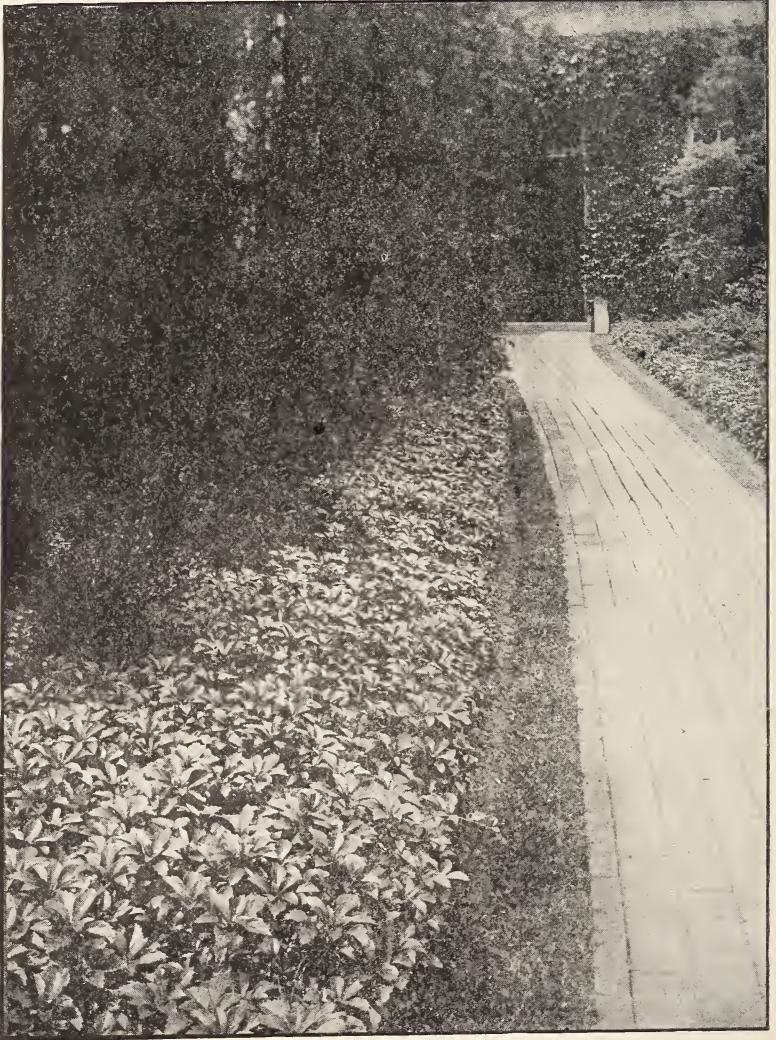
These plants are not new or untried. All are perfectly hardy, and will grow and give the results promised if planted and cared for as directed.

Our list of plants is still incomplete but comprises the best of the least expensive kinds, and we are rapidly adding all plants of merit for these uses, and can secure them for you now, though not at as reasonable prices.

**NOTHING WILL ADD AS MUCH TO THE CHARACTER AND BEAUTY OF YOUR GROUNDS AS THE COVERING OF THE BARE, RAW SOIL WITH A LIVING MAT OF GREEN FOLIAGE, OR THE COVERING OF STEEP TERRACES WITH THESE PLANTS, TO RELIEVE THE TERRIBLE FORMALITY OF THEM AS WELL AS HOLD THE SOIL.**

**THE CONTRASTING GREENS OF THESE PLANTS IS CHARMING AND FULLY APPRECIATED BY STUDENTS OF LANDSCAPE ART AND SHOULD ALSO BE APPRECIATED BY ALL ESTATE OWNERS.**

Estimates for planting and advice as to methods for such will gladly be given you.



**Pachysandra as a Border Plant**



## Pachysandra Terminalis (Japanese Spurge)

The illustration gives a fair example of the beauty of this plant and its usefulness for similar border plantings, but I fear should I attempt to describe fully its varied and wonderful qualities for these and other positions, you would accuse me of woful exaggeration.

Brought from Japan about thirty years ago, its value was overlooked until recent years, and I admit personal pride in my successful attempts to bring a knowledge of its real value to the landscape architects.

Pachysandra is an ALWAYS EVERGREEN plant, growing to a height of not more than eight inches. Its foliage is a cool dark green color and it is hardy and disease-free always, under any conditions.

It grows by means of creeping underground stolons and forms a dense even mat of foliage which will stand any amount of abuse and neglect and continually improve.

IT WILL GROW IN DENSE SHADE AND FULL SUN, in any kind of soil, or exposure and moisture conditions.

Plantings made by myself ten years ago under Beech trees with Northern exposure are in better condition now than ever and I have seen numerous plantings under similar conditions that are the same.

Pachysandra is the ONLY PLANT I know of that will grow well in dense shade, and is also an ideal plant either in sun or shade for any of the uses as given under the separate headings in this booklet.

Pachysandra requires CLOSE PLANTING to be immediately successful as it is best for its growth that the foliage SHADES AND KEEPS COOL the roots. This is also true of most ground-cover plants and is why I advise the use of more small plants rather than less larger plants when planting.

My sales last year of this plant were over 200,000, which should prove its value is not overestimated.

### PRICES OF PACHYSANDRA

Size	Distance to	Per Each	Per Doz.	Per 100	Per 1000
	Plant				
One-Year ...	6-8	\$0.10	\$1.00	\$6.00	\$50.00
Two-Year ...	8-10	.15	1.25	8.00	75.00
Pot Plants ..	10-12	.15	1.50	10.00	85.00

500 Plants of Any Size Sold at the 1000 Rates

Special Rates in Over 1000 Lots

## Vinca Minor (Myrtle) (Periwinkle)

An old-fashioned plant you no doubt know well but have failed to appreciate. Evergreen and perfectly hardy, covered in Spring with thousands of periwinkle blue flowers. Height 2 inches. Creeping.

Grows well in semi-shade or full sun and is ideal for slopes and terraces, borders of flower-beds, etc., alone or in combination with Pachysandra.

### PRICES

Size	Distance to Plant		Per Each	Per Doz.	Per 100	Per 1000
	Inches					
One-Year ...	6-8		\$0.10	\$1.00	\$6.00	\$45.00
Two-Year ...	8-10		.15	1.25	8.00	60.00
Pot Plants ..	10-12		.15	1.50	9.00	70.00

500 Plants of Any Size Sold at the 1000 Rate

Special Rates in Over 1000 Lots

## Euonymus Radicans

A small leaved evergreen vine, clinging climber, very suitable for low walls, stone or brick houses, slopes and terraces, as an edging plant for gardens, in place of boxwood, among shrubs and evergreens, and for vases and window-boxes.

Euonymus is perfectly hardy, will stand some shade, and is altogether a plant too little used.

### PRICES

Size	Distance to Plant		Per Each	Per Doz.	Per 100	Per 1000
	Inches					
One-Year ...	10-12		\$0.20	\$2.00	\$8.00	\$65.00
Two-Year ...	12-18		.30	2.50	12.00	85.00
Three-Year ..	18-24		.40	4.00	30.00	250.00
Pot Plans ..	10-12		.25	2.25	15.00	100.00

500 Plants of Any Size Sold at the 1000 Rate

Special Prices in Over 1000 Lots

## Euonymus Radicans Variegata

A variegated green and white form of Euonymus Radicans, and extremely beautiful for contrasts. Suitable for every purpose that suits the above and as hardy.

### PRICES

Prices and sizes are the same as Euonymus Radicans.

## Euonymus Kewensis

A very beautiful small leaved vine, evergreen and perfectly hardy. One of the newer plants and being much used for low walls, rockeries, paved terraces, slopes, etc. Sun or semi-shade.

### PRICES

Size	Plant Inches	Per Each	Per Doz.	Per 100	Per 1000
One-Year	...10-12	\$0.20	\$2.00	\$15.00	\$125.00
Two-Year	...12-18	.30	2.50	18.00	175.00
Thumb Pots.	..12-18	.20	2.00	15.00	145.00
Pot Plants	..18-24	.30	2.50	20.00	175.00

500 Plants of Any Size Sold at the 1000 Rate

## Euonymus Vegetus (Evergreen Bittersweet)

Climbing or semi-prostrate evergreen vine, covered in Fall and Winter with red berries similar to Bittersweet. Rather a slow grower, but when established makes one of the most beautiful vines possible. Splendid for low walls, terraces, slopes, and planted on top of embankment walls.

### PRICES

	Distance to Plant Inches	Per Each	Per Doz.	Per 100
Two-Year	...18-24	\$0.30	\$2.50	\$18.00
Three-Year	..24-36	.50	5.00	45.00
Four-Year	...36-48	.75	8.00	60.00
Five-Year	.... 48	1.00	10.00	80.00

25 Plants of Any Size Sold at the 100 Rate

Special Prices in Over 100 Lots

## Euonymus Carrerii

Similar to the above but a more upright grower and has no berries. Used at entrance gate posts and similar positions. Hardy and highly desirable.

### PRICES

Prices and sizes are the same as for Euonymus Vegetus.

## Small Leaved English Ivy

I have a large stock of this beautiful Ivy, similar to the large leaved variety, but with small foliage, and much more beautiful for many effects. Not as rapid a grower as the other, but presumed to be more hardy, though it is seldom that the large leaved ivy is injured.

For vases, window boxes, embankments, etc., in sun or partial shade, this Ivy is unusually good.

### PRICES

Size	Distance to Plant Inches	Per Each	Per Doz.	Per 100	Per 1000
2½-Inch Pots.	8-10	\$0.20	,\$1.50	\$12.00	\$100.00
4 -Inch Pots.	12-18	.50	5.00	45.00	400.00

500 Plants of Any Size Sold at the 1000 Rate

## Large Leaved English Ivy (*Hedera Helix*)

The well-known large leaved evergreen clinging ivy so much used for walls and houses.

The uses for this plant are very numerous and it is seldom used enough anywhere, for it is a beautiful vine, free from insects and disease, and a rapid grower.

As a border for garden beds or to outline walks, etc., and as a ground-cover in all semi-shady places it is excellent and will do well if properly planted.

The secret is to use smaller plants and more of them to quickly cover all the bare soil, rather than long, large plants which must be pinned down and which cannot be clipped as well.

### PRICES

Size	Distance to Plant Inches	Per Each	Per Doz.	Per 100	Per 1000
2¼-Inch Pots.	10-12	\$0.15	\$1.25	\$8.00	\$70.00
4 -Inch Pots.	18	.40	4.00	25.00	200.00

500 Plants Sold at the 1000 Rate

## Veronica Rupestris (Creeping Speedwell)

A prostrate creeping plant with almost evergreen foliage, and myriads of gentian blue flowers in spring.

Height 2 inches. Hardy and a rapid grower, but does not become a weed. Prefers sun or semi-shade.

Excellent for borders of garden beds, steep terraces, paved walks, rockeries, etc.

### PRICES

Size	Distance to Plant Inches	Per Each	Per Doz.	Per 100	Per 1000
Small Plants.	8-10	\$0.10	\$1.00	\$8.00	\$75.00
Pot Plants	..10-12	.15	1.50	10.00	90.00

500 of Any Size Will Be Sold at the 1000 Rate

## Ajuga Repens (Bugle)

Nearly evergreen plant with rather heavy foliage, and blue flowers. Hardy and suitable for garden positions, and does very well as a ground-cover in partial shade.

### PRICES

Size	Distance to Plant Inches	Per Each	Per Doz.	Per 100	Per 1000
Small Plants.	8-10	\$0.10	\$1.00	\$8.00	\$75.00
Pot Plants	..10-12	.15	1.50	10.00	90.00

500 of Any Size Sold at the 1000 Rate

## Wild Thyme

A species of Thyme found growing wild on New England hills, and a most delightful and unusual plant.

Nearly evergreen, creeping, height 2 inches, hardy, prefers full sun, but will grow in partial shade also.

This plant is extremely suitable for paved terraces, rockeries, garden borders, steep banks, and best of all for garden walks, or planted among the grass on the lawn.

The foliage is very fragrant and the plant will allow of being mown with a lawn mower, so it will give you fragrant walks and lawns, delightful to walk upon, without injury to the Thyme.

The flowers are not beautiful, being small and lavender in color, but the fragrance and ease of growing make this a most desirable plant.

### PRICES

Size	Distance to	Per Each	Per Doz.	Per 100	Per 1000
	Plant				
Small Plants.	6-12	\$0.10	\$1.00	\$8.00	\$75.00
Thumb Pots..	6-12	.10	1.00	8.00	75.00
2¼-Inch Pots.	10-18	.15	1.50	12.00	100.00

500 of Any Size Sold at the 1000 Rate

## Nepeta Mussenni

A comparatively new plant, not evergreen. It has sage green foliage, and is a mass of foamy blue flowers in May. If cut after blooming it blooms as freely in the Fall. Height 1 foot. Perfectly hardy.

A very beautiful and satisfactory plant for mass effect in the garden or border, and splendid for steep banks, etc. Our demand from landscape men is increasing, so it must be good.

### PRICES

Size	Distance to	Per Each	Per Doz.	Per 100	Per 1000
	Plant				
Small Plants.	10-16	\$0.15	\$1.25	\$8.00	\$75.00
Pot Plants	..10-16	.20	2.00	12.00	100.00

500 Plants of Any Size Sold at the 1000 Rate

## Nepta. Glecoma (Ground Ivy)

A very useful and beautiful creeper. Semi-evergreen. Height 2 inches. Particularly suited to moist locations. Rapid grower. Flowers blue.

### PRICES

Size	Distance to	Per Each	Per Doz.	Per 100	Per 1000
	Plant				
Small Plants.	8-10	\$0.10	\$1.00	\$8.00	\$60.00
Pot Plants	..10-12	.15	1.25	10.00	75.00

500 Plants of Any Size Sold at the 1000 Rate

## Lychimachia Nuemalaria (Moneywort)

A semi-evergreen creeper, with light green foliage, and covered in early Summer with thousands of bright yellow flowers. Height 1 to 2 inches. On old-fashioned plant seen growing wild in old gardens. Excellent for moist places in sun or semi-shade. Suitable for paved terraces, rockeries, steep banks, etc.

### PRICES

Size	Distance to Plant		Per Each	Per Doz.	Per 100	Per 1000
	Inches					
Small Plants.	8-10		\$0.10	\$1.00	\$8.00	\$60.00
Pot Plants	..10-12		.15	1.25	10.00	75.00

500 Plants of Any Size Sold at the 1000 Rate

## Lonicera Halliana (Halls Honeysuckle)

The native Honeysuckle we know so well, and which helps much to make Pennsylvania roadsides beautiful to other State visitors, though we do not ourselves appreciate the plant.

For covering fences, steep banks and unsightly places it has no equal, and should be much more freely planted. Perfectly hardy, free from disease, and of rapid growth. It can be cut at will and easily kept within bounds.

### PRICES

Size	Distance to Plant		Per Each	Per Doz.	Per 100	Per 1000
	Inches					
Small Plants.	10-12		\$0.10	\$1.00	\$6.00	\$50.00
Pot Plants,						
2¼-Inch	...12-16		.15	1.25	10.00	80.00
Pot Plants,						
4-Inch	.....18-24		.40	4.00	35.00	300.00

500 of Any Size Sold at the 1000 Rate

## Wisteria Chinensis

A vine very well known but not used often for its best purpose, that of covering steep banks and low walls. Such uses of this plant are beautiful and make the waste places a decided joy. Purple or lavender flowers. Rapid grower. Perfectly hardy.

### PRICES

Size	Distance to Plant	Per Each	Per Doz.	Per 100
6-Inch Pots	..... 3-4 Feet	\$1.00	\$10.00	\$90.00

50 of Any Size Sold at the 100 Rate

## Sedums

All of the Sedums listed are low growing plants suitable for paved walks, terraces, banks, etc., and thrive in dry sunny positions. Perfectly hardy.

The varieties are: Acre, yellow; Album, white; Sexangular, yellow; Sieboldi, bright pink; Stolonifera, purplish pink; Spurium Coccinum, rosy crimson.

### PRICES

Size	Distance to Plant		Per each	Per Doz.	Per 100	Per 1000
	Inches					
Pot Plants	.. 8-12		\$0.15	\$1.25	\$10.00	\$75.00

500 Plants Sold at the 1000 Rate

## Climbing Roses

Many of the Climbing Roses are most ideal for covering steep banks and walls or fences. A notable example is to be seen at Merion Station.

The more prostrate varieties of the Wichuriana type are best, some of the newer varieties being exceptionally good.

### PRICES

Prices on quantity lots of more than one dozen will be quoted you, and prices in large quantities will be most reasonable.

## Other Plants

I shall be glad to submit prices on any plants you may wish not listed here, to include rock garden plants, border plants, bog plants, etc. I am constantly purchasing these plants for use in my landscape work and prices and material will be reasonable and good.

Quotations on plants in quantity are especially invited or estimates for your entire proposed plantings.

## Plants for Foundation Plantings, Etc.

In connection with my ground-cover plants I supply but do not grow other prostrate evergreen shrubs and trees which are so often used with ground-cover plants, particularly for foundation, terrace, or rockery plantings.

Such plants would comprise the prostrate forms of Evergreens, Junipers, Yews, etc., and of shrubs, Cotoneasters, Azaleas, etc.

These plants are difficult to find and unless one knows the plants and what one wants to secure mistakes are often made, as well as overlooking many of the more desirable kinds.

I shall be glad to submit you lists of the plants you may wish or plan such planting for you.

## List of Plants for Special Purposes

### DENSE SHADE

*Pachysandra Terminalis*

### SEMI-SHADE UNDER TREES AND SHRUBS

*Pachysandra Terminalis*  
*Vinca Minor*  
English Ivy  
*Ajuga Repens*  
Rhododendrons and Laurel

### PARTIAL SHADE UNDER TREES AND SHRUBS

*Pachysandra Terminalis*  
*Vinca Minor*  
English Ivy  
*Ajuga Repens*  
*Nepeta Glecoma*  
*Euonymus Radicans* and *Variegata*  
*Euonymus Kewensis*  
Rhododendrons and Laurel

**SEMI-SHADE FROM BUILDINGS, ETC.**

Pachysandra Terminalis  
English Ivy  
Vinca Minor  
Ajuga Repens  
Euonymus in variety  
Rhododendrons and Laurel  
Nepeta Glecoma  
Moneywort  
Honeysuckle

**BANKS AND TERRACES IN SEMI-SHADE**

Pachysandra Terminalis  
Vinca Minor  
English Ivy  
Euonymus in Variety  
Honeysuckle  
Nepeta Glecoma  
Moneywort  
Prostrate Evergreens and Shrubs

**BANKS AND TERRACES IN SUN**

Pachysandra Terminalis  
Vinca Minor  
English Ivy  
Euonymus in Variety  
Honeysuckle  
Nepeta Mussenii  
Wisteria Chinensis  
Climbing Roses  
Prostrate Evergreens and Shrubs

**PAVED WALKS, STEPPING STONE WALKS**

Wild Thyme  
Moneywort  
Veronica Rupestris  
Nepeta Glecoma  
Sedums in Variety  
Phlox Sublata  
Euonymus Kewensis  
Vinca Minor  
Sedums in Variety

**GARDEN BORDER EDGINGS**

Pachysandra Terminalis  
Vinca Minor  
Veronica Rupestris  
Euonymus Radicans  
Euonymus Kewensis  
Boxwood  
English Ivy  
Moneywort

**FOUNDATION PLANTINGS**

All of the plants listed in connection with Prostrate Evergreens and Prostrate Shrubs.

**WINDOW BOXES, VASES, URNS, ETC.**

English Ivy  
Euonymus in Variety  
Vinca Minor  
Pachysandra Terminalis  
Nepeta Glecoma



## Rhododendrons and Laurel

No more beautiful or lasting landscape effect can be obtained than by the proper use of these plants. They are much more suitable and permanent for many positions than the evergreens and shrubs so commonly used, and if you do not think so it is because you have not seen a proper planting of them made. Hardy under all conditions. Beautiful foliage. Withstanding a great deal of shade if required of them, and forming a wonderful background for flowering plants, or effectively screening those objectionable views, both Winter and Summer.

In addition to our special plants, which we grow here, we are collectors of Pennsylvania Native Rhododendrons and Laurel.

We have our own collecting grounds, which have not been culled over, but which are virgin fields, full of extremely fine plants.

Our man who digs them for us has been doing this work for 25 years, and selects and digs the plants properly. They are delivered as soon as dug and are not stowed in a box car and shipped long distances.

The plants are SUN GROWN, and are therefore infinitely better than shade grown stock. The Laurel is the small leaved variety, which is better than the larger leaved kind.

Specimen plants for separate planting can be furnished or less perfect plants for mass planting.

Our methods of planting and care are entirely original we believe, and very successful, our losses seldom exceeding 2 per cent. Advice for planting will be gladly given you or we will make the planting for you at moderate cost. The prices of our plants are comparable with any other concern and we know our plants are better and more properly cared for en route to you. These plants may be seen at our nursery, in separate sizes or as sold for mass plantings.

### PRICES DELIVERED TO YOU

	Per Each in Truck Load Lots of 100 or More Plants
2-3-Foot Plants .....	\$1.25
3-4 " " .....	1.75
4-5 " " .....	2.75
5-6 " " .....	4.00

Mixed size plantings for mass planting in truckload lots of about 150 plants are quoted at \$1.50 each delivered. Such loads will contain many specimens.

Large plantings will be especially quoted.

Specimen plants by the single plant or more range in price from \$2.00 to \$8.00, according to height and spread.

## Window Boxes, Urns and Garden Vases

We make a specialty of filling of the above with plants not generally used for such purposes. If you are tired of Geraniums and the green and white Vinca so commonly used, and want a Vase or Window Box filled with plants that won't become tiresome, we can arrange them for you. The plants we use are soft-toned greens with distinct colored foliage plants and soft-colored flowers, as you wish.

## Hedges

Hedges are another of our Specialties, because we are in a position to secure the right kind of plants and have the men who know how to plant a hedge so it will make a hedge.

We do not always recommend Hedges, for many times another kind of planting would be more beautiful and suitable, but there are places where a Hedge is essential.

However, there can be other kinds of Hedges than the regulation Privet Hedge so often seen. Perhaps too often.

There are Barberry Hedges, Spirea Hedges, Beech Hedges, Althea Hedges, Hemlock Hedges, Persian Lilac Hedges, and many kinds other than Privet, which are often more suitable and beautiful. There are also other kinds of Privet which are more hardy and some less formal ones which you would prefer.

Our estimates of cost of Hedges is based on the per foot plan, so you know just how much you are to pay for a hedge of a certain height and length.

Please ask us for estimates, which will be accurate and as specified.

## Evergreens for Screen Planting

In line with our specialty of Hedge Planting we are in a position to estimate economically upon Evergreens and Screen Plantings.

We collect our own Native Cedars, which are the best trees for this purpose. They are grown in clay soil and lift with a good ball, and are of good color and furnished well with foliage. The price is reckoned by the foot as to height, and estimates will be given per foot for planting.

Obtained by the truck load directly from our collecting grounds these trees are not particularly expensive, especially as we will guarantee them to grow.

We can also supply other Evergreens suitable for such a purpose. White Pines, Hemlocks, Spruce, or Arbor Vitae.

## Your Planting

To those of you who are not to be satisfied with the simple purchasing of plants and trees from a nursery and the planting of your grounds by inexperienced men, we offer the advantages of our Landscape Department.

This Landscape Department is my own personal hobby and receives my particular attention at all times.

My experience in horticultural matters covers a period of thirty years, several of them spent in the employ of an eminent landscape architect, and the remainder as superintendent of large private estates. I know plants thoroughly and have no prejudices in favor of excess stock of my own to dispose of. I can therefore plan your planting entirely from the artistic and practical standpoint as is done by recognized landscape architects.

I am prepared to submit to you plans and estimates for your planting, at cost if such plans and estimates are not accepted, and gratis if I receive the work. Or I will plan and plant your grounds on a strictly cost plus basis, which is usually the better method. This method provides that plans, planting lists, etc., labor, plants, material, etc., are furnished to you at strictly cost to me. I personally supervise your work and make payment of all bills, and charge you 20 per cent. above such costs for my services.

As cost price to me in matters of materials and plants, etc., is usually less than real cost to you, the actual cost of doing work in this way is not in excess of other methods, and there is a most decided advantage in the knowledge and fact that

Your plants are personally selected.

Your planting is properly done.

Your planting is really planned.

You receive what you order.

You receive all you order.

You can change your plans.

You can exercise your own tastes.

We undertake the grading of your grounds, seeding, drainage, etc., on the same basis as planting, and shall be glad to submit estimates to you.

## “The Barclay Tag”

“The Barclay Tag” may not mean much to you, but if it did not mean much to me I would not name it “The Barclay Tag.”

If you have purchased nursery stock before, you rather depended upon the “Tag” to determine and guarantee to a degree the plant you purchased.

Nursery men, however honest, are only mortal. Mistakes will occur, or during the rush seasons, which every nurseryman has to contend with, your particular order may not receive the attention it should, or which he would wish to give it. This is why the “Barclay Tag” was conceived.

“The Barclay Tag” means that such plants as you order are PERSONALLY SELECTED by myself from those nurseries having in stock the BEST quality plants of the variety you wish.

“The Barclay Tag” means that my knowledge of plants and a further knowledge of the stock of many nurseries permits me to select for you directly from those nurseries plants of the size you wish, the variety you wish and the quality you wish.

“The Barclay Tag” means that plants thus personally selected cost you no more than they would otherwise.

“The Barclay Tag” means that the stock you purchase has been properly cared for and transplanted a sufficient number of times before sold.

“The Barclay Tag” means that the stock is free from disease and insects.

“The Barclay Tag” means that your plants will be properly dug.

“The Barclay Tag” means that your plants are delivered promptly.

“The Barclay Tag” means that stock not to your liking is returnable without comment.

“The Barclay Tag” means that “Barclay Planting is Guaranteed.”

“The Barclay Tag” means that the experience of 30 years as a student of Nature is at your disposal, to give you for the same cost the quality of plants you ought to have for that cost.

“The Barclay Tag” is an indestructible zinc tag, stamped “The Barclay Tag,” and having written on it with a stylus the botanical name of the plant. The tag is sealed to the plant with a leaden seal, and will be placed upon the plant by me personally, and “costs no more.”

The advantages of “The Barclay Tag” may not seem at first apparent to you, but I am sure upon consideration that you will acknowledge that if I am at all sincere it will be possible for me to select for you better plants than you can secure unless you personally select them. This I do for you, and as it is immaterial to me what plants you purchase it is rather positive that I will select from your orders the best obtainable from those nurseries having the best stock of the respective kinds you wish, and my “Tag” unless backed by results would prove a decided boomerang.

## Seeding and Fertilizing of Lawns

We have added this item to our list of specialties because we feel that in general this important subject is sadly neglected and there is ample room for our experience in this matter.

We have made a study of lawns and their seeding and care and our methods are somewhat different than the simple sowing of grass seed. We know that certain varieties of grass seed grow better in this soil and climate than in others. We know that such grass seed is no more expensive than the ones commonly used. We know that the proper mixture made up according to our formula will give the best results. We know that lawns need fertilization of a different kind than is more generally used.

Our methods of fertilization are similar to those used upon the best golf links, where much experience has been gained by the trying out of numerous methods. Our system of fertilizing supplies a mulch to your lawn, which is not seen by you but which supplies to the grass both fertilizer and mulch. Such a mulch is the important item when you consider the summer heat which burns our lawns out.

This mulch is not expensive. It is not humus, which has been used sometimes, but is a special mixture of our own making and contains no humus.

We use this mulch in the growing of our plants here and know it is a good thing to use.

We shall be glad to give you an estimate for this fertilizing or seeding of your lawn.

## Garden Furniture

We are glad to be able to inform you that we have secured the exclusive agencies in this territory of several of the leading manufacturers of both wooden, stone and concrete garden furniture, pottery ware, etc., and have a very comprehensive line of these products.

WE HAVE ON EXHIBITION on our grounds samples of the following: Bird Baths, Rose Arbors, Rose Trellises, Pergolas, Sun Dials, Garden Seats, and Tables. Vases, Window Boxes, Fountains, Porch Seats, Jardinieres, Urns, Porch and Breakfast Room Furniture. Rustic Work, Fencing, and many unusual and beautiful things that you need to make your garden and home perfect.

These goods are of the best quality, made by established manufacturers of reputation, and are sold at exactly the same prices you would pay from the manufacturers or elsewhere.

As these goods are of several different makes, you will find the choice of styles and design much more varied than can be seen elsewhere. Deliveries will be made promptly.

## Gardening Advice

We are at all times most willing to assist you in Gardening matters.

Our experience in these lines is rather vast and varied for we have had to meet and solve such matters for years in connection with our work upon private estates.

Some of the problems you may wish help with are:

Lawns. Preparation. Fertilizing. Seed. Costs. Care, etc.

Drives and Walks. Compositions. Grades. Costs, etc.

Trees. Planting. Kinds. Diseases. Insects. Costs, etc.

Trees. Trimming. Surgery. Moving. Spraying, etc.

Shrubs. Kinds. Colors. Pruning. Planting. Costs, etc.

Vegetable Gardens. Size. Yield. Seed. Labor. Costs, etc.

Flower Gardens. Plans. Size. Effects. Care. Preparing, etc.

Flower Gardens. Rose. Annual. Herbaceous. Rock. Wild, etc.

Bulbs. Garden. Greenhouse. Colors. Heights. Effects. Care, etc.

Greenhouses. Costs. Plans. Heating. Care. Erection. Production, etc.

Greenhouse. Temperatures. Soil. Arrangement, etc.

Hotbeds. Making. Costs. Production. Care. Results, etc.

Coldframes. Making. Costs. Production. Care. Results, etc.

Small Fruits. Distances. Yield. Costs. Arbors, etc.

Fruits. Distances. Yield. Varieties. Spraying, Pruning, etc.

Contracts. Various, secured and supervised.

Estimates. Various, secured and supervised.

Estate Management. Costs. Wages. Records. Men, etc.

Estate Management. Tools. Toolhouses. Repairs. Costs, etc.

Estate Management. Supervision of entire estate.

Estate Management. Supervision during absence of owner.

A nominal charge is made for consultation, by appointment, and further time required for such plans, estimates, etc., as may be required is charged for on the cost-plus basis. In this way the cost of this advice and assistance is not excessive and we are sure will be of value to you.

## Your Insect Problems

We believe you will be interested in knowing that we are prepared to help you combat this serious evil by being ready to do for you in a scientific manner all necessary spraying, etc., at the proper time and by proper methods.



### “Melrosine”

I am rather proud to inform you that I am the ORIGINATOR of this well-known and efficient insecticide.

“Melrosine” was devised for the extermination of the Rose Bug and has proved all it claims for this purpose, being harmless to foliage and blooms and absolutely non-poisonous to humans, but certain death to Rose Bugs.

“Melrosine” is, however, as efficient for other insects as for Rose Bugs and is rapidly becoming the general all around Insecticide for use on house plants, in the greenhouse, and for garden use, at all times.

“Melrosine” is pleasant to use, which is an unusual quality to find in any insecticide, and as stated is perfectly harmless to the user.

“Melrosine” is used diluted 1 part to 20 parts of water.

#### PRICES OF “MELROSINE”

½ Pint .....	\$0.50
1 Pint .....	1.00
1 Quart .....	1.75
½ Gallon .....	3.25
1 Gallon .....	6.00

## Fencing Problems

We are prepared to estimate upon all kinds of Fencing, post and rail, wooden hurdle, woven wire, picket, rustic, stone walls, English hurdle, and many other kinds.

### English Hurdle Fence

Made of split chestnut timber. Efficiently answers every purpose on farms, suburban and country places—more suitable than hedge for many positions. Its rugged, rustic appearance gives the effect of an English country home. Order now—immediate delivery.

