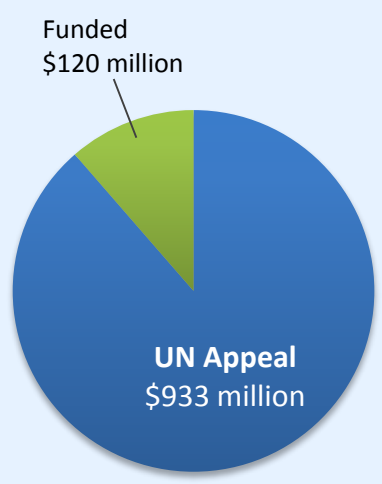
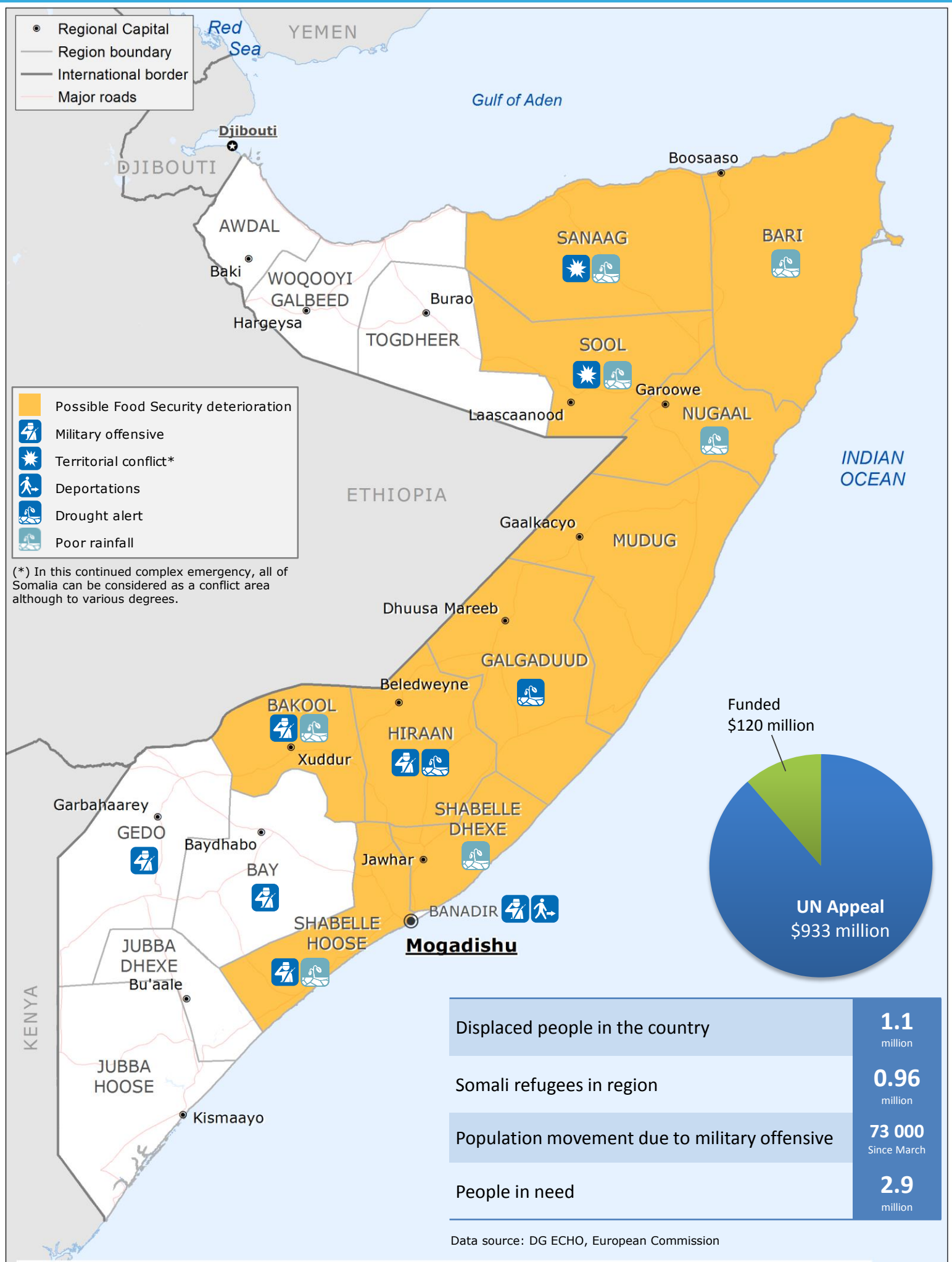


8 May 2014: Somalia – Early warning food security alert

- Regional Capital
- Region boundary
- International border
- Major roads

- Possible Food Security deterioration
- Military offensive
- Territorial conflict*
- Deportations
- Drought alert
- Poor rainfall

(* In this continued complex emergency, all of Somalia can be considered as a conflict area although to various degrees.



Displaced people in the country	1.1 million
Somali refugees in region	0.96 million
Population movement due to military offensive	73 000 Since March
People in need	2.9 million

Data source: DG ECHO, European Commission