

N·E·W·S & E·V·E·N·T·S



Credited with obtaining a grant from the U.S. Department of Education for the Center for Cooperative Education and Career Services, are, from the left, Beverly Cudney, assistant director for student services; Gordon Fuller, director of the center; Manny Contomanolis, assistant director for employer services; and Marlene Allen, placement counselor.

Center Receives Grant For Advancement of Co-op

RIT's Center for Cooperative Education and Career Services has been notified by the U.S. Department of Education that it will receive a grant to support co-op activity in the Institute.

Gordon Fuller, director of the center, says, "The federal grant is the first of its kind for co-op at RIT. These supplemental funds will help us continue to improve the quality of co-op for our students by monitoring existing opportunities, developing additional placements with current employers and better preparing students to obtain a co-op position in line with their career goals."

The grant comes from Title VIII monies designated as Supplemental Funds "to initiate, improve or expand a program of cooperative education." With the \$23,000 grant the center plans to improve communications with co-op employers through telephone contact, instructional brochures

and employer training. The grant also will fund a more comprehensive survey of students returning from co-op experiences and more on-site visits for placement counselors to meet with co-op students and their employers.

While the RIT co-op program is national in scope, with students working in 26 states last year, the grant designates the Northeast United States as the development area appropriate for supplemental funds. Fuller says, "It was difficult for personnel in the Department of Education to understand the scope of our program. Most colleges primarily place their students locally. With the unique professional programs of study at RIT, our students go where the job market is, be it New York, Texas or California. New York and the Northeast do continue to be where we have most co-op placements, however, and we will continue to develop this area with the grant."



EXHIBIT SHOWCASES FACULTY WORK... On exhibit in Bevier Gallery is the College of Fine and Applied Arts Faculty Show, the annual showcase of recent work by the college's faculty. Guests, administrators, faculty and students attended Sunday's formal opening of the show, which will be up through Jan. 27.

RIT Schedules Second King Memorial Observance

Dr. Ralph D. Abernathy, civil rights leader who succeeded Martin Luther King Jr. as president of the Southern Christian Leadership Conference, will speak at RIT's second annual memorial observance of King's birthday tomorrow, Friday, Jan. 13.

Abernathy, an advocate of nonviolent protest with King, became nationally known as initiator of the Montgomery, Ala., bus boycott of 1955-56. He will interpret "The Message of Martin Luther King Jr."

Admission is free and the public is invited to the commemoration from 3 to 6 p.m. in Ingle Auditorium, College-Alumni Union. The program also will include songs by the RIT Gospel Choir and The Alvin Parris Singers, readings from King's writings, an interpretive dance by Jennienne Peoples, College of Science student from Buffalo, N.Y., and solos by Rosalind Hood, Rochester, College of Business student. The audience will join the choirs in singing "Lift Every Voice and Sing," known as the black national anthem, at the beginning of the program and "We Shall Overcome" at its conclusion.

John L. Blake, RIT trustee and president of John L. Blake Associates Inc. Machine Tools, St. Paul St., will introduce Dr. Abernathy.

Minister of the West Hunter Street Baptist Church in Atlanta since 1961, Abernathy served as SCLC president until 1977 and is now active in the Martin Luther King Jr. Center for Social Change headed by King's widow, Coretta King. He has preached racial equality and justice throughout the United States and the world and partici-



pated in the World Peace Council Presidential Committee Meeting in 1972 in Santiago, Chile. He was present in Oslo, Norway, when King accepted the Nobel Peace Prize and himself was recipient of the Peace Medallion from the German Democratic Republic in 1971.

Sponsors of the King remembrance are RIT's College of Liberal Arts, the Minority Affairs and Student Activities offices of the Student Affairs Division, the Black Awareness Coordinating Committee and the Frederick Douglass Scholarship Committee.

Weather Won't Close Recreation Facilities

If RIT closes because of inclement weather, recreation facilities will remain open on the following schedule, according to Greg Moss, Recreation manager.

The facilities and hours of operation are: gymnasiums, 9 a.m. to 11 p.m.; weight room, 9 a.m. to 11 p.m. and swimming pool, 11 a.m. to 2 p.m., and 7:30 to 9:30 p.m.

For information on the Frank Ritter Memorial Ice Arena, call 2222. For information on the College-Alumni Union Game Room, call 2239. All other questions regarding recreation facilities should be directed to 2610, 6153 or 2280.

Faculty Exhibit Reception Set

If you hurry, you can still view "The Other Side," an exhibit of recent work by faculty members in the Applied Photography Department of the School of Photographic Arts and Sciences.

The exhibit closes Saturday (Jan. 14) with a reception from 7 to 10 p.m. in the RIT Photo Gallery in the Frank E. Gannett Memorial Building.

Coordinated by Gunther Cartwright, assistant professor in the department, the exhibit highlights work done by faculty members on their own time. Photography, examples of xerography and drawing are included in the exhibit.

Faculty members represented in the show are Thomas Iten, department chairman; Peter Anderson, Charles A. Arnold, Jr., Owen Butler, Cartwright, Kathleen Collins, Michael Geissinger, John Head, Henry Leichtner, Howard LeVant, Elaine Matczak, Doug Rea, John Retallack, David Robertson, Donald Smith and Michael Soluri.

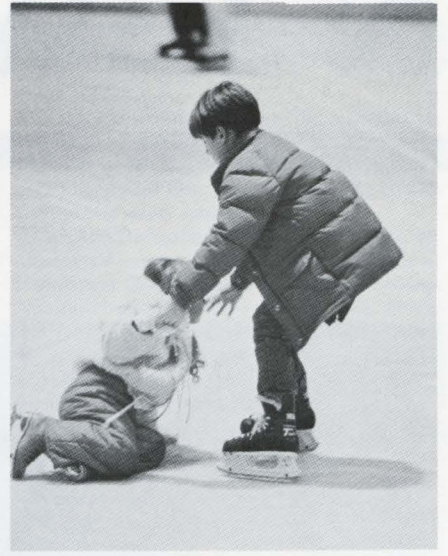
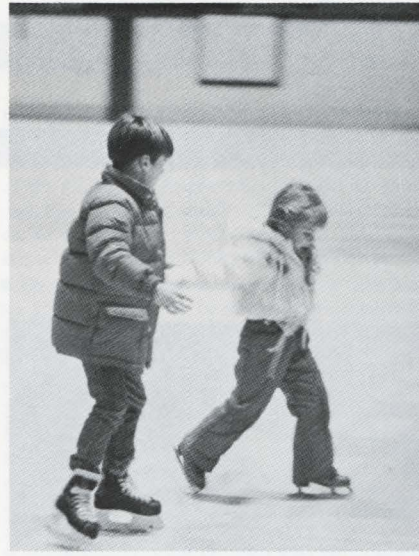
The department's professors emeriti, Neil Croom and Doug Lyttle, also have work in "The Other Side."

Gallery hours are until 5 p.m. today, tomorrow from 9 a.m. to 5 p.m. and Saturday from 7 to 9 p.m.

According to Michael Soluri, faculty member in the department, the exhibit is a unique view at the development of the picture taking aspects of photography at RIT.

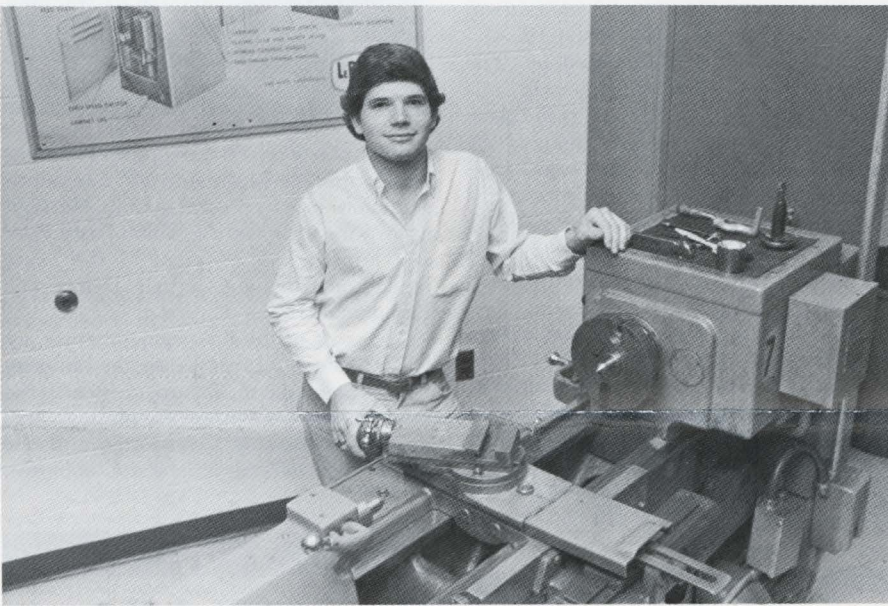


"TOURISM CANADA-WINTER MARKET-PLACE" was the theme of the recent Canadian government sponsored trade show held at the Hilton Inn on the Campus on Jefferson Rd. Assisting at the show were travel management students from RIT's School of Food, Hotel and Tourism Management in the College of Applied Science and Technology. From the left, are, Meg Downey, RIT; Wayne Bradburn, public relations director at the Gray Rocks Inn in Quebec; Teresa Comer, RIT; and David Moillet, trade commissioner for tourism programs at the Canadian Consulate General office in Buffalo.



FIRST SKATE...GOOD SKATE!... This plucky little girl takes off on first skating adventure with the help of her brother. She strides out with misgivings then straightens up in good glide...only to fall! She was skating during the free skating time offered during the Institute Holiday Party. Skating is now available for adults, faculty, staff and day students, Monday through Friday 12:15 to 2 p.m. It's free with ID and a \$1 skate rental, if necessary. Family day is Sunday when children may skate 12:15 to 2 free with parents ID.

Student Receives Scholarship From Lapp Insulator Division



Bradley DeWispelaere, a third-year mechanical engineering student in the College of Engineering, has received a \$22,500 scholarship from the Lapp Insulator Division of Clevepak Corporation of Leroy.

Bradley DeWispelaere, a third-year mechanical engineering student in RIT's College of Engineering, has received a \$22,500 scholarship from the Lapp Insulator Division of Clevepak Corporation of Leroy, N.Y.

The scholarship is phased over three years and pays for his tuition, room, board and books.

The Lapp Division in Leroy has approximately 600 employees and is one of the world's foremost manufacturers of large-scale electrical insulators. Clevepak operations include a broad line of products serving the packaging, building and construction industry.

At this point in his college career, DeWispelaere isn't certain in what area of mechanical engineering he might specialize. "I'm not worried about that yet," DeWispelaere said. "Engineering is such a broad field. From here on in, I'll be taking more engineering electives and I'm sure something will come out of that."

Dr. Albert Craig Gives Wellness Talk

Dr. Albert B. Craig, Jr., prominent exercise physiologist from University of Rochester, will lecture at RIT at 12 noon Thursday, Jan. 26, in the wrestling room. Craig will lecture on fitness related to daily activities and how to evaluate work capacity on a treadmill.

The lecture is open to all RIT personnel and is one of a series of programs on health and wellness co-sponsored by RIT Recreation and Student Health Services. An interpreter will be provided for the free lecture.

DeWispelaere said that much of his recreation time is spent on school work. "RIT is a great place and there's an awful lot to do when you want to get away from the books. But I find that engineering is such an interesting area I end up spending most of my free time trying to learn more."

Long active in scouting, DeWispelaere is an Eagle Scout. He is a member of the American Society of Mechanical Engineers and the Society of Automotive Engineers.

Wilkinson to Speak On Civil Liberties

Frank Wilkinson, executive director of the National Committee Against Repressive Legislation and a major defender of civil liberties for the last 20 years, will speak at 7:30 p.m., Tuesday, Jan. 24, in room 3215, Max Lowenthal Building (12).

Wilkinson will examine "Civil Disobedience and the Quest for Peace: Constitutional Rights and Political Activism." His appearance is sponsored by RIT's School of Human Services and NTID's Department of Liberal Arts in cooperation with the American Civil Liberties Union.

Harrison Salisbury Lectures In Great Decisions Series

The Office of International Student Affairs will offer a lecture series based on the Great Decisions Program of the Rochester Association of United Nations.

Harrison Salisbury, former New York Times journalist and Pulitzer Prize recipient, and College of Liberal Arts professors will be speakers.

The series, consisting of three noon talks in the 1829 Room, College-Alumni Union, and one evening program, will begin at noon, Tuesday, Jan. 24. Dr. Nabil Kaylani, professor of international relations, will speak on "U.S. and the Middle East."

and author of books on the Soviet Union and China, will explore "The Tri-Partite World (United States, U.S.S.R., China) and the Third World."

Louis Andolino, associate professor of political science, has chosen "U.S.S.R. under Andropov: Hard Choices for Moscow...and Washington" for his talk at noon, Tuesday, Feb. 14.

Dr. Richard Chu, professor of history, will conclude the series at noon, Feb. 21, when he speaks on "China and the U.S."

The College Activities Board is co-sponsoring the series with the International Stu-



Harrison Salisbury, former New York Times journalist and Pulitzer Prize recipient, will lecture in Great Decisions Program series offered by Office of International Student Affairs beginning Tuesday, Jan. 24, and continuing through February.

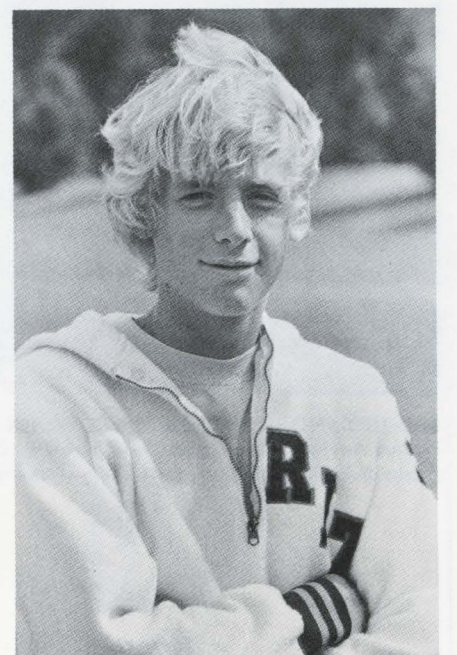
Salisbury is the next speaker at 8:30 p.m., Wednesday, Feb. 8, in the NTID Theatre. The former foreign correspondent, editor

dent Affairs office. The College of Liberal Arts and the RIT International Students Association assisted in planning the programs.

RIT Runner Turns Photographer

Brian Nice, fourth-year photo illustration major at RIT, gained some notoriety recently at the New York City Marathon. A cross country runner at RIT, Nice photographed the Marathon for Janart Limited, a photography agency. The January 1984 issue of *The Runner Magazine* contains three of his photographs, including the cover that shows winner Rod Dixon celebrating the victory.

In his fifth year at RIT, Nice ran four seasons of cross country at RIT, winning the Upper New York State crown two years ago. The native of Garrison, N.Y., gained national prominence in 1979 as part of the RIT cross country contingent running non-stop coast to coast as part of the Institute's 150th anniversary. The crew consisted of 12 runners, including students, alumni and cross country coach Peter Todd.



Brian Nice



Richard Eisenhart, chairman emeritus, RIT Board of Trustees, center, accepts busts he commissioned from sculptor, Selah Bond. William Castle, vice president of Government Relations and director of NTID, right, accepted the busts from Eisenhart on behalf of the Institute.

Eisenhart Commissions Busts Of Three Living RIT Presidents

RIT has busts of President M. Richard Rose and former presidents, Mark Ellingson and Paul Miller, thanks to the generosity of Richard Eisenhart, chairman emeritus, RIT Board of Trustees.

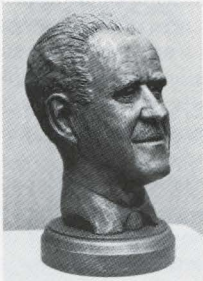
After seeing the bust of RIT vice president Alfred Davis by Selah Bond, Eisenhart decided to commission busts of the Institute's two living former presidents and President Rose.

Bond, director of communication/marketing, Technical and Education Center, College of Graphic Arts and Photography, has won several awards for his sculpture and paintings. He started the busts by taking photos of the three men at various angles. Working with clay, he shaped the heads. "I don't take measurements, but try to convey the emotional feeling the subjects project," said Bond.

The bust of Ellingson was challenging because Bond wanted to achieve Ellingson's likeness during the period of his RIT presidency (1936-1969). Photos from the Institute archives as well as current photos were used.

After drying, hollowing out and firing, the busts were finished with several coatings to give a bronze-like patina.

Presented to the Institute by Eisenhart, the finished busts are temporarily on display in the office of William Castle, vice president of Government Relations and director of NTID, in the Lyndon Baines Johnson building. Members of the RIT community are invited to make recommendations for a permanent location for the busts. One possibility is the board room.



Mark Ellingson



Paul Miller



M. Richard Rose

NTID Gallery Displays Graphic Art Works

Communications Graphics, an exhibit of top-quality promotional and corporate graphics, will be on display in the NTID Gallery in the Lyndon Baines Johnson Building through Jan. 27. This travelling display from the American Institute of Graphic Arts includes the best in posters, calendars, logs, menus, letterheads, brochures, annual reports, and magazine and newspaper ads.

"The AIGA collection represents the finest in current graphic arts," says Robert Baker, manager of event and visitation programs at NTID.

"Since the graphic arts program is one of the strongest majors on campus, we feel this exhibit will be of special interest to the RIT community."

The NTID Gallery is open Monday through Friday 8:30 a.m. to 4:30 p.m.

McCarthy Chair Provides SAIS's Skilled Students

When RIT's School of Applied Industrial Studies (SAIS) opened in 1979, Fred and Lucius Gordon of the Mixing Equipment Company, Railway Signal Company, units of General Signal Corporation, established an endowed chair in honor of Russell C. McCarthy.

An RIT trustee and honorary trustee since 1947, McCarthy was manager of the Rochester Industrial Management Council for 20 years. One of his chief responsibilities was that of providing local employers with skilled workers. That work continues today through the Russell C. McCarthy Chair, which supports the position of SAIS director.

James Forman, appointed the first Russell C. McCarthy professor in July, 1980, takes pride in the program's 96 percent placement rate and the high academic standards required for admission. Since its inception in 1979 more than 300 students have graduated from SAIS programs in drafting, electromechanical and machine tool technologies and packaging machinery mechanics. Forman is planning to add a computer maintenance program and increase

Students See Demonstration Of Steadicam, Camera Holder

There's not a feature film or commercial produced today that doesn't use the Steadicam," Jesse Garfield told film and television students in the School of Photographic Arts and Sciences.

Garfield, sales manager of Cinema Products, manufacturers of Steadicam, a device to hold a camera, demonstrated the equipment to students and faculty at RIT during December.

First developed in 1974, the prototype of the Steadicam was made with garage door springs. There are now more than 300 Steadicam devices in use throughout the world.

According to Garfield, one of the first dramatic uses of the Steadicam was in the motion picture "Rocky"; the device allowed the cinematographer to follow Rocky up the steps of the Philadelphia Art Institute.

The Steadicam also was used to film the forest sequence in "Return of the Jedi." Garfield explained that the device was mounted on a fishing line strung through the redwoods of California. The camera shot the scene at 3/4 frames per second and the film was shown at 24 frames per second giving the effect of a high rate of speed.

Following Garfield's remarks, students were able to try out the Steadicam.

Dick Floberg, associate professor in the School of Photographic Arts and Sciences, arranged Garfield's visit and demonstrations. "It's important for students to learn first hand the types of equipment in use in the industry," he said.

Electronic Bulletin Board 'Lights Up'

Do you know what's going on at RIT?

Beginning now there's very little excuse for not knowing about an event.

An electronic bulletin board system that announces Institute events has been installed in five campus locations by Dr. Barry Culhane, assistant vice president for Campus Life, Student Affairs Division.

Color television monitors displaying information about campus events have been installed in the College-Alumni Union, Grace Watson Dining Commons, NTID's Lyndon Baines Johnson Building, George Eastman Memorial Building near Security Trust Bank and Wallace Memorial Library.

Dr. Culhane said the RIT Electronic Bulletin Board is the first phase of a campus information system that eventually will allow persons to request information at a computer terminal and receive immediate answers from a general RIT data base. Culhane calls this part of the system RIT Computerized Information System for Students (RITCISS).

"For now, the electronic events calendar will provide current information about campus events," he said.

The information display system was obtained from ADS Inc. of Dallas, Tex. It uses the RIT television circuit and can be viewed on Channel 6. Displays will include ads that have been approved by the Institute and national sports information as well as current RIT information.

To submit messages for the electronic board, call 475-2266 or pick up the information sheet in the Student Affairs office, College-Alumni Union mezzanine.

Crafts by Hand On Air Sunday

After a break for the holidays, Crafts by Hand, the television series featuring Dr. Robert H. Johnston, dean of the College of Fine and Applied Arts, is back on the air.

The final three programs in the series produced by WXXI-TV (Ch. 21) will air this Sunday and the next two Sundays at 5:30 p.m. on Ch. 21.

Featured in this Sunday's program will be leather work with Pat Halpen and Sam Freedman. On Jan. 22 the program will highlight wooden furniture and feature William J. Keyser, professor and chairman of crafts in the School for American Craftsmen, and local craftsman Wendel Castle. Musical instruments with Richard Newman and Jacques Francais will be the subject of the final segment of Jan. 29.

Crafts by Hand is currently being shown by 13 public television stations throughout the country. The series was recently acquired by a fourteenth station, KOCE-TV in Huntington Beach, Calif.

FOCUS

Spring Quarter Registration Set

Registrar's Office offers the following Spring Quarter registration and billing information for matriculated day college students.

Jan. 24, pre-billing statements mailed.

Feb. 9, class schedules are mailed to permanent home address.

Feb. 13, Spring Quarter payments due, Bursar's office.

Feb. 21, Payment confirmation mailed; second billing statements mailed to students who have not paid.

March 5, Open registration, for students who need to make class schedule changes, to pay quarter bill, to register for courses because of inability to pre-register. Undergraduate students register according to the first letter of their last name on this schedule: A, 1 p.m.; B, 11 a.m.; C, 10:30 a.m.; D, E, 10:30 a.m.; F, G, 9:30 a.m.; H, I, J, 9 a.m.; K, L, 8:30 a.m.; M, 4 p.m.; N, O, P, 3:30 p.m.; Q, R, 3 p.m.; S, 2:30 p.m.; T, U, V, 2 p.m.; W, X, Y, Z, 1:30 p.m.

Graduate students, anytime from 8:30-11:30 a.m., 1-4:30 p.m., 5-7 p.m.

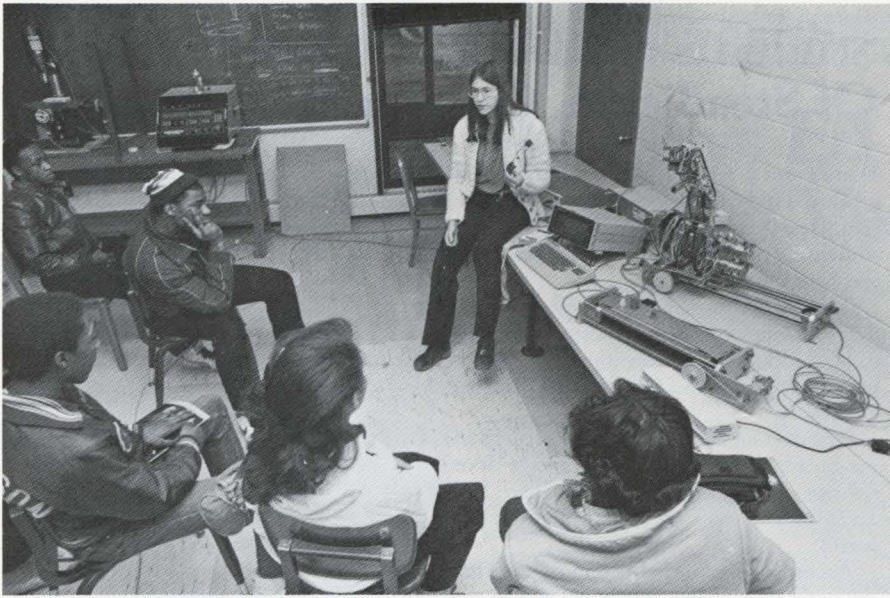
March 6, \$25 late registration fee.

Students may leave their registration forms and have their ID cards validated at either of the following posts in the Bursar's area: Paid in Full/WITH Confirmation or Permit to Register, Paid in Full/NO Confirmation or Permit to Register, or Not Paid in Full.



the industrial training programs that retrain workers whose skills are no longer in demand.

According to Forman, "SAIS exists at RIT in large part because of the Russell C. McCarthy Chair. The financial support as well as the industry participation resulting from McCarthy's involvement have been important in organizing SAIS and making it run."



ADMISSIONS OPEN HOUSE... Barbara Brenner, center, a faculty member in the Industrial Engineering Department of the College of Engineering, tells local high school students how an industrial robot can be voice programmed. Her presentation was part of a series of career information programs sponsored by the Admissions office in December in cooperation with various colleges.

Institute Forum Probes Women's Media Image

"Women and the Moving Image," is January's Institute Forum and third in a series of talks and films arranged by RIT's Complementary Education Department and Thomas Ciesielka, director of Talisman, College Activities Board.

Molly Haskell, New York City film critic and author, will examine how women are depicted in television and the movies at the Institute Forum, 7 p.m., Wednesday, Jan. 18, in Ingle Auditorium. During her talk, "Images of Women in Contemporary Movies and Television," she will describe the impact of media portrayal of women.

Admission is \$1; tickets are available at the candy counter, College-Alumni Union.

Haskell, author of a critical analysis of women in film, *From Reverence to Rape: The Treatment of Women in the Movies*, is considered one of the strongest voices advocating more realistic portrayal of women in the media. She has written about the women's movement, film and theater for the *Sunday New York Times*, *Vogue*, *Psychology Today*, *Saturday Review*, *Film Comment* and *American Film*. Haskell has reviewed films for National Public Radio's "All Things Considered," NBC's "Today" and "The Mike Douglas Show." She has served on the selection committee for the New York Film Festival.

Haskell's Institute Forum appearance follows a talk last night (Jan. 11) by filmmaker Ana Carrigan, producer with Bernard Stone of the 1982 film, *Roses in December*. Carrigan discussed issues raised by her film, the story of lay missionary Jean Donovan who was murdered with three American nuns Dec. 2, 1980, in El Salvador.

It's Time to Pick Up Your ID Card

Many undergraduate and graduate students, faculty and staff members have not picked up their Institute ID cards at the Registrar's office, according to Vicki Aspridy, assistant registrar.

Persons who had pictures taken for their ID cards within the last year are asked to pick up their ID cards at the ID window, Registrar's office, first floor of the George Eastman Memorial Building.

To obtain the cards, students must present identification such as driver's license, police identification card or social security card; faculty and staff members must present the orange temporary identification card given them by the Personnel office. Registrar office hours are from 8:30 a.m.-8:30 p.m., Monday-Thursday and from 8:30 a.m.-4:30 p.m., Friday.

The series on women and film and television began Dec. 14 when Caroline Leaf, animator and documentary filmmaker, presented her award-winning animated films. An American, Leaf is an animator at the National Film Board of Canada and recipient of the Norman McLaren Award and the Grand Prix, 10th International Animation Film Festival.

Marlene Sanders, CBS news correspondent and producer, will conclude the series at 7:30 p.m., Wednesday, Feb. 8, in Ingle Auditorium.

Ciesielka, series coordinator, has been assisted by Jane Potenzo, Eva Santelli and Max Hudson. In addition to the College Activities Board and Student Affairs Division's Complementary Education Department, other sponsors are the Creative Arts Council, School of Photographic Arts and Sciences and Instructional Media Services.

Landscape Architects Hired for Site Planning

RIT has retained Glavin and Vanderstine, central New York landscape architectural firm, to update the 1975 campus master plan and to design the site of the Interfaith Center and RIT Bookstore now under construction.

H. Donald Scott, vice president, Finance and Administration, said the firm expects to take six months to update the master plan. In addition, Scott said the company will be responsible for site planning of new campus construction, will assist the Institute's facilities management staff and will provide design and construction drawings for implementing the revised master plan.

Lecture Series Covers Science in China, India

A lecture, which explores the centuries of scientific discovery by China and India and the importance of their science in today's world, will be presented by Dr. Varadaraja Raman, physics professor. It is free and open to the RIT community.

"Science in China and India" will be presented at 3 p.m. Tuesday, Jan. 24, in room 1250 of the College of Science. It is the third lecture in Dr. Raman's five-part series entitled "The Evolution of Scientific Thought: Science in the Ancient World."

The series is sponsored by the College of Science.

RIT Vets Club Raises \$600 Toward Book Loan Fund

Gene Clark, director of the Office of Veteran Affairs and advisor to the RIT Vets Club, congratulates members of the Vets Club for their efforts in raising money for the Veterans Emergency Book Loan Fund (VEBLF).

With the support of the RIT community and their Christmas spirit, \$600 was added to the Book Loan Fund this December. This brings the loan's total resources to approximately \$2,000. VEBLF offers no-interest loans to veterans and their dependents demonstrating the need for a short term loan. If someone eligible for V.A. educational benefits should be experiencing payment problems, money from this fund will allow them to purchase books and supplies from the RIT bookstore.

"To all of those who participated by either donating, buying or helping sell the stocking stuffers so temptingly displayed in the College Alumni Union, we extend our sincerest appreciation. Thanks for helping those who have served help other RIT students!," says Clark.

Workshops Challenge Talented Children

Kids On Campus, the workshop series for gifted and talented children offered by RIT's Learning Development Center, begins its winter program January 16. Fifth through tenth graders will find the workshops provide challenging learning experiences in computer graphics and animation, programming in BASIC and PASCAL and mathematical investigation and games. Students who enjoy exploring ideas will have the opportunity to experiment with writing forms while pondering the future of 2024.

To apply for the workshops, students must be recommended by their teacher or guidance counselor, or be enrolled in a program for gifted or talented children. The cost is \$90 per workshop. All workshops will be held at the Learning Development Center offices off East River Road.

Those wishing more information on the workshops, or desiring to register a child in time to take advantage of the winter openings, call 2281.

RIT Learns to Save Lives

One in four residents of Monroe County will be capable of saving a life using CPR (cardiopulmonary resuscitation) by 1989 if Save-A-Heart, a community-wide CPR training project, achieves its goals. That's important, because when cardiac arrest occurs away from medical assistance, CPR must be applied within four minutes if brain damage is to be avoided and life sustained.

This life-saving training program will be launched Saturday, Feb. 4, when at least 1,000 people will take a four-hour Save-A-Heart course at RIT. Called Save-A-Heart Saturday, the event offers CPR training sessions each half-hour from 8:30 a.m. to 2 p.m.

"Most people we're with on a daily basis wouldn't know what to do if someone suffered a heart attack or choked. That's a frightening fact when you consider that CPR or first aid for choking must be applied immediately to sustain life until medical or emergency help arrives," points out Richard Myrick, Save-A-Heart Committee chairperson.

"Save-A-Heart is aiming to more than double the number of people who'll be able to help. Think what that can mean in terms of lives saved," says Myrick. "It's been done in Seattle, and they've got the numbers to prove that it works."

Save-A-Heart is coordinated by the Rochester-Monroe County Chapter of the American Red Cross in cooperation with the Genesee Valley Chapter of the American Heart Association and Rochester Rotary. RIT's swim team is lending its support to the Save-A-Heart Saturday event.

Save-A-Heart Saturday participants should:

- . be at least 13 years of age
- . bring a pair of sneakers to change into
- . arrive 20 minutes early
- . park in Lot D
- . report to the Information center in the College-Alumni Union and look for the Save-A-Heart logo.

The fee for the class is \$5. Checks should be made out to the American Red Cross and earmarked for Save-A-Heart. Call Red Cross at 461-9800, ext. 256, for more information about Save-A-Heart Saturday.

WITR Joins National Broadcasters' Group

WITR, RIT's student radio station (89.7 FM), has been accepted as a member of the National Radio Broadcasters Association (NRBA), Ed Trefzger, general manager, has announced. NRBA is a national lobby and information organization comprised of 80 percent of the nation's commercial radio stations and an increasing number of non-commercial stations.

Trefzger said that NRBA membership will provide WITR with monthly Federal Communications Commission (FCC) updates, technical bulletins and access to industry experts as well as a voice in Washington, D.C.

NRBA membership, in addition to associate membership in the National Federation of Community Broadcasters (NFCB), is making WITR a more community service-oriented radio station, Trefzger added.

Technology Center 'Is a Reality'

"Rochester as a Technology Center: Myth or Reality?"

Most assuredly a reality.

And Richard D. Richmond, president of High Technology of Rochester, proceeded with enthusiasm to recite the reasons during his Jan. 5 talk, last of the RIT Women's Council's "Business at Noon" lecture series at City Center.

The head of the year-old company established by RIT, the University of Rochester and the Rochester Chamber of Commerce declared that the city already has the basic elements for success as a technology center.

"We have technology-based industries, a highly skilled work force, and two internationally known fine educational institutions that can offer companies research and development, training opportunities, consultants and new graduates as potential employees."

RIT's cooperative education program also works as a mutual benefit to both companies and the Institute, he added.

"High Technology of Rochester represents a commitment by RIT and the University of Rochester to the institutions in the city that have supported their growth. In turn, the growth of technological industries will help both educational institutions," Richmond explained.

He expects the company to obtain land "soon" and be in operation by 1985.

Typewriters Found, Are They Yours?

Campus Safety Investigator Stan Perry has an unusual problem.

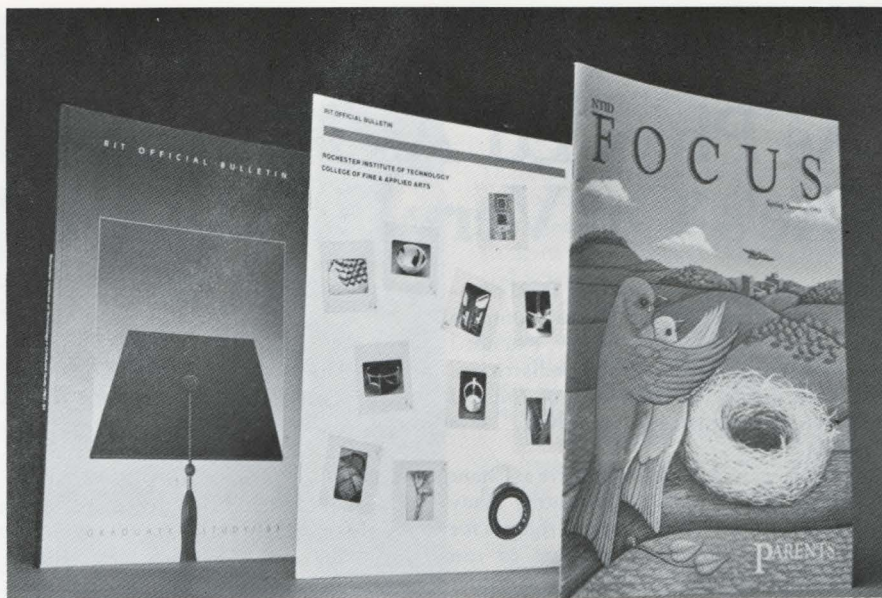
As the result of an investigation with New York State Police, Perry recovered three IBM Selectric typewriters stolen from RIT offices. One has been returned to its rightful owner in the George Eastman Building.

But the other two...

Perry wonders if two beige IBM typewriters are missing from offices, but not reported as stolen. A check with IBM shows that the typewriters were sold to RIT, but does not indicate what offices purchased them.

Serial numbers on the machines are #21-9120660 and #5333681.

If the typewriters belong to your office, call Perry, 6675.



DESIGNING FOR EXCELLENCE...The Communications Department has received awards of excellence from the University and College Designers Association. The cover of the graduate catalog, the cover and total unit of NTID Focus, Spring '83 and the RIT recruitment publication, College of Fine and Applied Arts Viewbook, were selected for the awards by judges at the University and College Designers Show 83. Winning entries were exhibited at the UCSA conference in Vail, Colo.

Expanded Shuttle Service to Continue

The trial period for the expanded shuttle bus service to residents of Riverton, Clearview and Westbrooke Commons extends through Winter Quarter.

Rose Bizova, Student Directorate director of student services, says faculty and staff members are welcome to use the service. Costs prorated at 50 cents a day are \$20 for the quarter; \$7.50 for December; \$9, January and \$7.50 for February. Ticket and schedule information is available at the RIT Bookstore, Sportshop, College-Alumni Union Game Room and the Residence Halls Association.

RIT Calendars Available

A special RIT calendar, featuring full color photos of the campus, has been produced by RIT Communications for the Office of Development and is available in the RIT Bookstore.

Construction Closes Sidewalks; Maps Show 'the Way'

As construction of the Interfaith Center, the RIT Bookstore and the interim bubble-covered recreation facility progresses, walkways between the College-Alumni Union and the George Eastman Memorial Building (O1) will be closed.

Because pile driving necessary to building the bookstore foundation may cause bricks to fall, John Yockel, assistant director of Campus Safety, said the pedestrian routes will be closed "about Jan. 16 or shortly afterward. The walkways will be inaccessible for from two to three weeks."

There will be two basic routes from the residential side to the academic side of campus. Yockel said maps illustrating the routes will be distributed and signs directing pedestrians will be posted.

The routes:

1) Cross the quarter-mile to the Eastman Building, walk through the lobby, take stairs to the second floor and exit through the doors near the Student Health Service to get to Wallace Memorial Library, Liberal Arts, Science, Engineering, Computer Science, Business and the Carey Building.

2) To get to the Frank E. Gannett Building housing the colleges of Graphic Arts and Photography and Fine and Applied Arts, turn right at Clark Gymnasium from the quarter-mile to the Frank Ritter Memorial Ice Arena, walk through the upper lobby, cross Lomb Memorial Drive, enter the northeast entrance of the Eastman Building through the Admissions office, take the

stairs to the second floor and exit through the doors near the Learning Development Center. After 10 p.m. Monday-Thursday, and after 6 p.m., Friday-Sunday, use the main entrance of the Eastman Building to get to the residential areas. Please note that the doors to the Eastman Memorial Building will be locked at 2 a.m. daily. Call Campus Safety, 475-2853, to get through the building or use walkways from the Gannett building to the Visitors Information Center on Lomb Memorial Drive, around the ice arena to the quarter-mile. Use the same route in reverse to get to academic areas. If you have questions, call Ed Steffens, 475-2346.

Status of construction on new buildings:

Interfaith Center is about a week behind schedule, but should be completed in May with final detail work scheduled for early summer. Occupancy will take place from mid-to late-summer.

Urban League Needs Students as Tutors

The Urban League of Rochester's tutorial program for high school students is in need of highly-qualified volunteers to tutor algebra, geometry, English, chemistry, biology, general science, basic mathematics and social studies. Tutoring sessions take place two evenings a week at the Rochester Career Skills Center, 242 West Main St. For information, contact Barbara Franklin, 325-6530.

Ritskeller Has New Events Board

If you've been to the Ritskeller lately, you've probably noticed the new daily events board by the entrance.

Richard Hager, manager, points out some of the happenings at the "Ritz"—big screen television for movies, soaps, Rock World, and Monday night football; quiet area for studiers, nightly "spirit cap" discounts, promotions for CCE students and professors, RIT sports events and the Friday afternoon social.

Ritskeller is open until 11 p.m., Monday through Thursday, and until 1 a.m. Friday. Saturday nights are available for special groups.

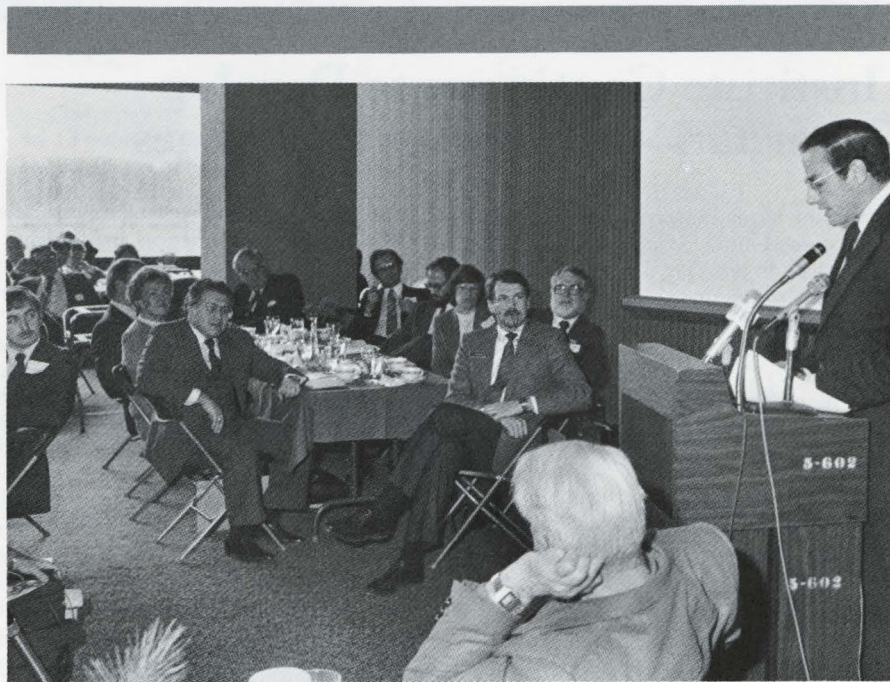
RIT Bookstore— excavation for telephone conduits and pile driving for the building foundation is underway and should be completed by the end of January.

Bubble-Covered Recreation Facility— The air-supported bubble has been erected and a surface similar to the one on the tennis courts will be installed following installation of an electric control panel and transformer.

Eastman Building Facade Repairs will begin in April. Work will begin on the north and east sides of the building. When repairs to the south side start after commencement, walkways between the Eastman Building and the College-Alumni Union again will be closed and the visitors' parking area will not be available because the area will be used for large construction equipment.

Maps of suggested routes will be available to resident students in their dorms as well as in the Residence Life Office. Maps are also being distributed to those who live in RIT leased or owned apartments.

Maps also will be available at the Visitors Information Center, the College-Alumni Union Information Desk, reception desk in the George Eastman Memorial Building, the Off Campus Student Association, and the lobbies of the Clark Gymnasium and the ice arena.



HOUSING CONFERENCE...Lt. Gov. Alfred DelBello, right, was the keynote luncheon speaker at the recent housing conference held at RIT and co-sponsored by RIT's Department of Civil Engineering Technology in the College of Applied Science and Technology. Seated at the head table, left to right, are Tony DiMarzo, president, Mark IV Construction Co., Rochester; JoAnne VanZandt, 10th District Monroe County legislator; Charles Touhey, Albany homebuilder; Irving Kent, Webster town supervisor; Charles Roxin, chairman, Monroe County Housing Commission; John Nolon, executive director, Center for Community Development and Preservation in Tarrytown, N.Y.; Barbara Jones-Higbee, director of the Troy Rehabilitation Improvement Program; Donald Martin, director, Monroe County Planning Department; and Kevin Foley, chairman of RIT's Department of Civil Engineering Technology.

New Rules Set On Library Misuse

By recommendation of the Student Hearing Board and the Student Affairs office, and effective Winter Quarter 1983, individuals charged by the Student Hearing Board or Student Affairs with the unauthorized removal or mutilation of library items may be sentenced to suspension, deferred suspension, or disciplinary probation. The status of deferred suspension also will carry a 90-day suspension of library book check-out and interlibrary loan privileges. Reserve check-out will not be affected.

PROFILE



Linda Sallade may have found the Fountain of Youth.

As administrative assistant to the director of Physical Education, Intramurals and Recreation, Sallade finds her work satisfying and challenging. In her daily duties, she is responsible for scheduling of physical education classes, handling budget maintenance and projection, and working closely with Director Bruce Proper in overall departmental operations.

"I enjoy the college environment — particularly working with students," says Sallade. "It keeps you young — or at least makes you think you are!"

Born in Rochester, Sallade spent most of her life in Mifflinburg, Pa., returning to the Rochester area 10 years ago. She began her professional career as a registered nurse and joined the Institute as Proper's secretary in October 1979. She was promoted to administrative assistant in January 1982.

As Phys Ed Assistant, She's 'On Very Good Team'

Her nursing career took her from Syracuse to Scotland and New Haven, Conn., as she served in medicine, surgery, extended care, obstetrics and as RN to a pediatrician. "I liked caring for patients, but found I became too emotionally involved," says Sallade.

Sallade views her administrative assistant position as one of accommodating many people's needs. "The important thing is for our physical education program to run smoothly," she says. "We must consider academic deadlines, the demand on our facilities and the gathering of data for scheduling purposes."

Sallade coordinates courses on and off campus for a staff of 13 full-time, and more than 20 part-time physical education instructors.

"Linda joined RIT at a stage when a person of her stature was so greatly needed," says Proper. "She is an extraordinary person and a highly valued member of the RIT community. Her zeal and dedication have produced immeasurable progress for our department."

As administrative assistant, Sallade reaches all aspects of the department's day to day operations, she recalls a recent encounter. "During the night, someone sabotaged the pool. When I arrived in the morning, everything, including benches, was floating in the water. Some of our early morning swimmers helped remove the debris."

She and husband, Ron, reside in nearby Scottsville with daughters, Jennifer and Abby, and stepsons Jeff, Tim, Ron and Jon. Ron is pastor at Union Presbyterian Church in Scottsville. Their daughter Jennifer is an exchange student in Germany this year.

When not caring for family affairs, Sallade puts her voice to work as a baritone performing barbershop harmony with the Genesee Valley Chapter of Sweet Adelines.

"Working with students keeps you young...or makes you think you are!"

A former church choir participant, she has been performing with the group for five years. She says, "They're a very caring and supportive group. We have an opportunity to meet people and entertain as well." Recent appearances include the Corn Hill festival, a country-western show, Genesee Country Museum, and visits to area nursing homes. Diana DeBruycker of RIT Food Service is the group's director.

Other hobbies include playing guitar, helping at the church, cross country and downhill skiing, sailing and jogging. With her nursing background, she eventually plans to work as a volunteer in a hospital. Sallade's goal is to receive her four-year degree, probably in humanities.

"When I came to RIT, I had very little clerical training," Sallade says modestly, "but Bruce gave me the opportunity for growth. He has been very fair and is a real caring person. I enjoy being with people and feel fortunate to be part of RIT and a very good team."

Counseling Center Earns Reaccreditation

RIT's Counseling Center has been re-accredited by the International Association of Counseling Services, Inc., according to Catherine Steel, director.

"We're especially pleased to have been re-accredited because the guidelines for accreditation were changed last year and were much more stringent, so it is very gratifying to know we met the stricter regulations," Steel said.

The Counseling Center provides personal psychological services and career counseling to students, faculty and staff as well as offering testing, consulting and research services. The center was awarded a Veterans Administration contract to provide readjustment counseling services to Vietnam era veterans.

Seniors Given Help In Finding Jobs

RIT seniors are invited to attend a special seminar series on job search strategies and successful career entry beginning in January. Staff members from the Center for Cooperative Education and Career Services and industry representatives will present the sessions. Seniors may attend one or all of the sessions and are asked to register with the center receptionist. If there is enough space, co-op students also may attend.

On January 16, "How to Make Job Search Letters Work For You" will be presented by Mary Dan Brewer, associate director of the center, from 4 to 5 p.m., Room 200, Building 1.

On February 6, "Do's and Don'ts of Negotiating an Offer" will be presented by Doug Pelino, manager of corporate employment and college relations at Xerox Corporation, from 4 to 5 p.m., Room 2000, Building 1.

On February 14, "Success on the Job the First Year" will be presented by Joe Carr, manager, General Electric, Steam Turbine Programs Support, International Department, from 4 to 5 p.m., Room 1250, Building 1.

country's fragmented society. Kaylani says, "The updated information and insights I gained have added an entirely new dimension to my courses on the Contemporary Middle East and International Relations."

George T. Alley, director of the School of Food, Hotel and Tourism Management in the College of Applied Science and Technology, visited Box Hill College of Technical and Future Studies in Melbourne, Australia. He explored regional tourism development, lectured students and discussed program development ideas with faculty, made presentations to industry management about the directions of tourism and conducted six industry seminars. As a result, faculty and student exchanges may develop.

CAST faculty member James Carbin, professor in the School of Computer Science and Technology, was invited to China to consult on computer science and technology.

Dr. Lawrence Belle, assistant vice president, Faculty and Program Development, met with officials of technical institutes and universities in Southeast Asia last summer to develop faculty exchange arrangements. He found the possibilities at Nanyang Technical Institute in Singapore and at Hong Kong Polytechnical Institute promising and with Dr. John Humphries' help is expanding RIT's relationships with both institutions. Belle joined Dr. Rose, Fallon, and Drs. Rhody and Chu in Shanghai and Hangzhou. Agreements for faculty exchanges with institutions in these two cities will be forthcoming. Belle says, "The demand for university-level technical education far exceeds the number of places available in Asian colleges and universities."

Faculty and administrators interested in international exchanges should contact Dr. John Humphries, administrator for international education, Office of Faculty and Program Development, 6644.

TAP Parity Bill 'Gives Balance'

Maintaining the balance of students in the independent sector and public sector of higher education in New York state is crucial to quality education and an equitable tax burden says RIT's Director of Government and Community Affairs, Deborah Stendardi. Stendardi says one way to help maintain that balance would be state enactment of the proposed TAP Parity legislation. "TAP Parity would increase the level of financial aid to thousands of students in New York through the tuition assistance program."

Current figures show it costs New York taxpayers \$840 per year to educate a student in independent universities. The cost per student attending the state system is \$6,502. "Currently 57 percent of New York's college students are enrolled in public universities. Unless there is some state help to make independent universities more affordable, more students will choose the state system and in the long run, create more of a burden for New York's taxpayers," Stendardi explained.

As an example, Stendardi points to New York's rankings in state spending for higher education per capita and per \$1,000 of personal income. "With 43 percent of the student body enrolled in private universities, New York ranks 18th in spending per capita and 30th in spending per \$1,000 of personal income, but in Texas, where 88 percent of the students are enrolled in the public system, the state ranks 5th in higher education expenditures per capita and 11th for expenditures per \$1,000 of personal income."

The TAP Parity legislation, now being considered by the state legislature would increase the maximum award to students from \$2,200 to \$3,900 and increases the maximum family income for eligibility from \$25,000 to \$40,000. If passed, the legislation would be phased in over a four-year period, beginning in September 1984.

Stendardi is the regional coordinator for Rochester area independent colleges and universities and is urging all faculty, staff, students and alumni to contact Governor Mario Cuomo and their state legislators to encourage support for this bill.

Seminar Promotes Racial Awareness

How racism affects all our lives will be the subject of a day-long seminar, 8:30 a.m. to 3:30 p.m., Tuesday, Jan. 17, in Room 1115, Max Lowenthal Building.

Taking part in the seminar, "Promoting Racial Awareness," will be 25 RIT administrators, faculty and staff members nominated by vice presidents and deans. Through discussions, a film and group activities, participants will examine the social dynamics of racism and suggest ways to combat racism at RIT. Seminar facilitators are Geneva Miller, Counseling Center, and Geri Curwin, assistant administrator of staff training and development, Personnel office.

Sponsors of the event are Cynthia McGill, director of the Office of Minority Affairs, and Leslie Berkowitz, Personnel office administrator for staff training and development.

Dean Johnston Has Heart Surgery

Dr. Robert H. Johnston, dean of the College of Fine and Applied Arts, is recuperating at home following surgery right after Christmas.

Johnston, who has served as dean of the college since 1971, underwent a single cardiac bypass operation at Rochester General Hospital.

Cards and letters can be sent to Johnston at:

61 Lime Rock Lane
Rochester, N.Y. 14618

Institute Continues to Develop International Faculty Exchanges

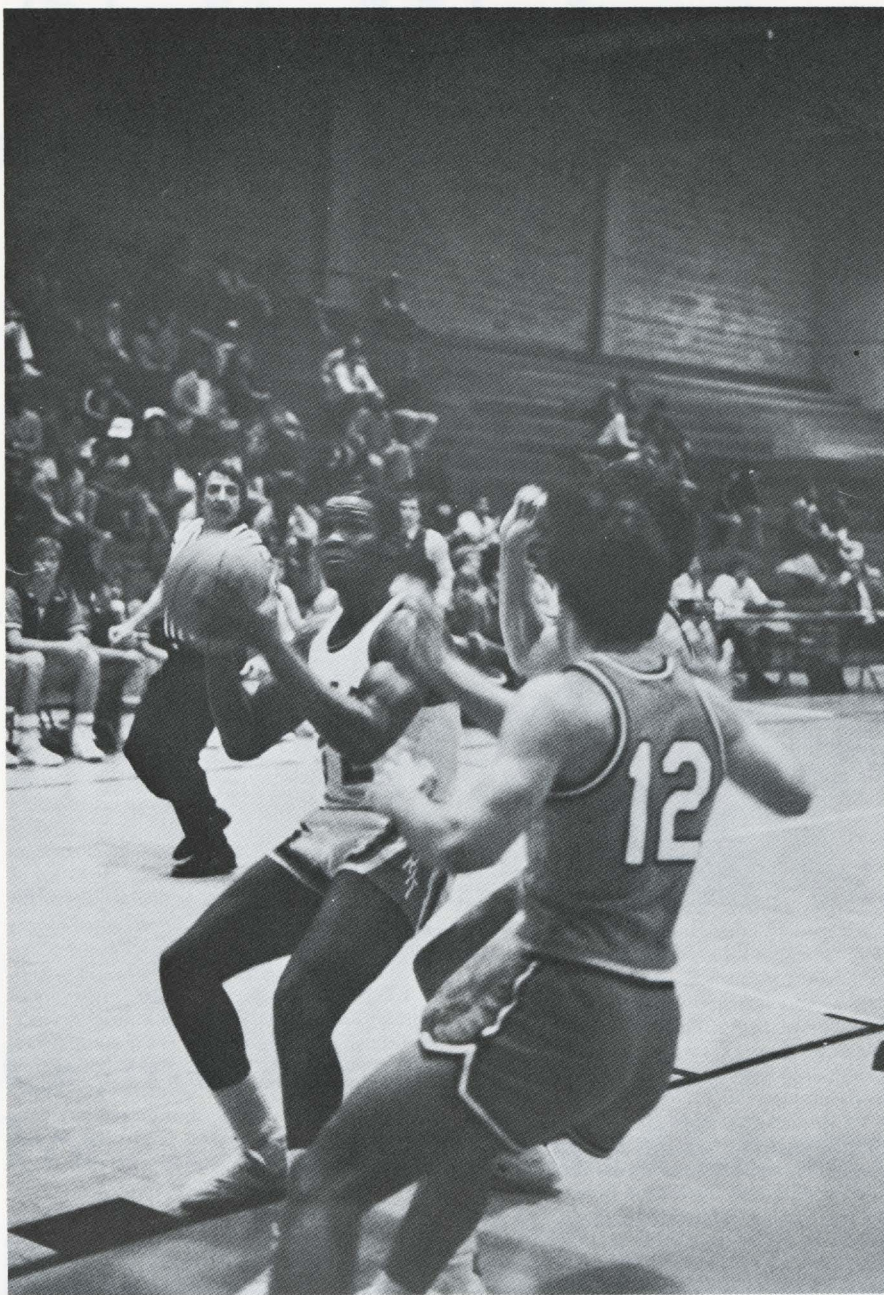
Studying abroad always has had a special allure—and now RIT is encouraging its faculty to do just that. The Institute's commitment to international faculty exchange programs offers unique opportunities for RIT faculty. After pursuing destinations as far-flung as China, Southeast Asia, Japan, Lebanon and Australia this past summer, several RIT faculty and administrators can attest to the value of international experiences.

President Rose's trip to China in June 1983 with Walter Fallon, former CEO of Eastman Kodak Co., Dr. Harvey Rhody in the College of Engineering and Dr. Richard Chu in the College of Liberal Arts began a series of international visits.

Dr. Eugene Fram, chairman of the Department of Marketing in the College of Business, visited Tokai University to study Japanese decision-making in academia and industry. Fram developed a journal article from his research and feels, "I now have a better understanding of cultural differences between the American and Japanese societies and management styles. The trip also enabled me to contribute toward internationalizing business curriculum."

Dr. John Hromi, director of the Center for Quality and Applied Statistics in the College of Continuing Education, went to China in an exchange on management techniques for improving quality and productivity and to arrange an affiliation agreement between the American Society for Quality Control and the China Society for Quality Control. Hromi says he gained a realistic impression of the educational, industrial and governmental conditions affecting Chinese quality and productivity goals.

Dr. Nabil Kaylani, professor in the College of Liberal Arts, went to Lebanon to study the political configurations of that



Charles Sease, left, moves to basket during recent RIT basketball game against Hobart. The Tigers host the 18th annual Lincoln First Bank Tournament Jan. 18, 20 and 21. RIT won the title in 1981-82. Photo by RIT student Steve Hockstein.

RIT Hosts 18th Lincoln First Basketball Tournament

RIT will host the 18th annual Lincoln First Bank Scholarship Tournament Jan. 18, 20, 21. Featuring eight teams from the greater Rochester area, the tournament contests will be held in George H. Clark Memorial Gymnasium.

First round pairings were announced recently by Lincoln First. In the opening contests Wednesday, Jan. 18, University of Rochester faces Hobart at 3 p.m.; St. John Fisher meets Roberts Wesleyan at 5 p.m.; RIT takes on Brockport at 7 p.m., and Nazareth meets Geneseo at 9 p.m.

Second round games are scheduled Friday, Jan. 20, at 5, 7 and 9 p.m. Final round competition on Saturday includes games at 4, 6:30 and 9 p.m. WHEC-TV (Channel 10) will broadcast the championship game live at 9 p.m. Saturday.

"The Lincoln First Tournament has always had special meaning for us," says Lou Spiotti, director of Intercollegiate Athletics. "Having the opportunity to host the event is an exciting experience and a way to assist Lincoln First Bank in continuing the tradition of quality."

Tournament tickets are available at the RIT athletic office, Lincoln First banks or any participating school. Advance purchase price is \$4 for students and \$8 for all others. The price includes admission to all contests each day. Day of game cost is \$2 for students and \$3 for others.

Last year UR won the tournaments. RIT has won the title five times, most recently in 1981-82 with a 61-59 victory over St. John Fisher. This is the second year the tourney has been held at a campus site.

This is Bob McVean's first year as head coach at RIT. He came to the Institute from the U of R where he served as assistant last season. For five years prior to that, he was head coach at Eisenhower.

The Tigers have contests with RPI (Friday at home) and Ithaca (Saturday away) prior to the Lincoln First opening round.

For additional information on the tournament, contact the sports information office, 475-6154.

Recreation Sponsors Blood Pressure Check

Greg Moss, manager of RIT Recreation, invites Institute faculty, staff and students to "get pumped up."

In cooperation with Student Health Services, Recreation is sponsoring a free blood pressure check from 11:30 a.m. until 1:30 p.m. Friday, Jan. 13, in front of the Recreation office, lower level of the Physical Education complex.

The program is free and is one of several health and wellness events co-sponsored by Recreation and Student Health Services this school year. An interpreter will be provided.

Faculty Exchanges Reviewed By Teaching Effectiveness Panel

With agreements for faculty exchanges with China pending and an arrangement for domestic exchanges recently established, the scene was set for the successful panel discussion on faculty exchange sponsored recently by the Institute Committee on Effective Teaching.

In outlining the goals of RIT's commitment to exchange programs with China, Mexico and the Dominican Republic, Dr. John Humphries, administrator of the Center for International Education and Services, noted that RIT faculty and graduates can assume vital contributing roles in the growth and development of other nations. The increasing probability that RIT graduates will find positions with multinational firms also underscores the value of having faculty from other countries join the RIT community.

Dr. Richard Morales, professor in the School of Human Services, College of Liberal Arts, discussed exchange opportunities at the Universidad Autonoma Metropolitana (UAM) in Mexico City. Dr. Richard Chu, also in the College of Liberal Arts, reviewed exchange developments with Zhejiang University in Hangzhou, Shanghai

University of Technology and Shanghai University of Science and Technology.

Demonstrating that research can be an exciting part of international experiences, Dr. Eugene Fram, College of Business, discussed his study of Japanese decision-making based on research and interviews he conducted at Tokai University in Japan.

Joyce Herman, Office of Faculty and Program Development, discussed domestic exchange opportunities provided through RIT's participation in the National Faculty Exchange Program. Faculty interested in domestic exchange are encouraged to contact Herman for more information at 6687.

Because of a mail distribution error, some faculty members did not receive a notice about the panel. Since there was a large and enthusiastic audience despite the mailing mix-up, the Institute Committee on Effective Teaching will repeat the panel during Winter Quarter if interest warrants. Any faculty member who wishes to attend may contact Dr. Diane Hope, chairperson, Institute Committee on Effective Teaching, 6053, or Anne Freeman, Language and Literature secretary, 6649.

Gifts to RIT

The following gifts, at or above \$1,000 in value, were received by RIT during the week of December 8th -December 15th.

Scholarships	\$6,000
150th Campaign	4,000
	1,000
Interfaith Center	3,006
	1,000
	2,000
Unrestricted	40,000
	3,960
Endowment	19,588

The following gifts, at or above \$1,000 in value, were received by RIT during the week of December 16th -December 21st.

Unrestricted	\$ 10,000
	1,000
	1,100
Scholarships	100,000
	1,100
Interfaith Center	5,000
	1,000

The following gifts, at or above \$1,000 in value, were received by RIT during the week of December 22nd -December 28th.

Unrestricted	\$ 35,000
	25,000
	10,000
	10,000
	5,000
	1,003
	1,000
	1,000
Endowment	50,000
	25,000
City Center/SAIS	50,000
Graphic Arts	5,000
Horton Child Care Center	1,000
Interfaith Chapel	93,750
	7,250
	1,000
	1,000
Library	25,000
Scholarship	10,000
	8,500
	5,000
	1,500
	1,000
	1,000
Gift-in-Kind	100,000
Microelectronics	15,000
Real Property	511,000 (appraised value)

NEWSMAKERS

● **Dr. Franz K. Seischab**, professor, College of Science, presented a paper at the tenth annual paper session of the Rochester Academy of Science at St. John Fisher College. The paper, "Standing Crop and Partitioning of Biomass by *Eleocharis rostellata* Torr. on three Sites in the Byron-Bergen Swamp, Genesee County, N.Y.," was a joint effort by Seischab, Dr. John M. Bernard of Ithaca College and Dr. Karel Fiala of the Czechoslovak Academy of Sciences. In addition, Seischab, Bernard and Hugh G. Gauch Jr. of Cornell University are co-authors of a paper recently published in *Vegatio*. The paper is titled "Gradient Analysis of the Vegetation of the Byron-Bergen Swamp, a Rich Fen in Western New York."

● **Max Lenderman**, associate professor in the School for American Craftsmen, presented a series of programs and workshops in Terre Haute, Ind., at the end of November. Lenderman, who teaches weaving and textile design, was invited to Terre Haute by the Wabash Valley Weaver's Guild, in cooperation with Arts Indiana, Vigo County School Corporation and the Indiana Arts Commission. He earned his bachelor's and one of his master's degrees at Indiana State University in Terre Haute. Earlier this fall, Lenderman spoke on weaving and textiles to the members of the Women's Council of the Memorial Art Gallery.

● **Jack Moore** has joined the Communications Department as a senior communications coordinator covering the areas of Applied Science & Technology, Engineering and Institutional Advancement.

● **Dr. Thomas E. Comte**, associate dean of the College of Business, has announced the promotion of **Cynthia Welch** to the position of administrative assistant to the dean.

● **Wiley McKinzie**, director of the School of Computer Science and Technology, has been appointed a member of the steering committee for Futures Week of the Rochester Sesquicentennial.

● **Kevin Foley**, chairman of the Department of Civil Engineering Technology in the College of Applied Science and Technology, has been appointed a member of the executive committee of the Associated Builders and Contractors Inc. He now serves as secretary and treasurer of the group's Empire State Chapter.

● **Elizabeth B. Croft**, associate professor of criminal justice, School of Human Services, recently served as a training group leader in an arbitration advocacy program held in Elmira, N.Y. Crofts, who is an arbitrator, evaluated case presentations of union and management advocates. The program was sponsored by the American Arbitration Association, the NYS School of Industrial and Labor Relations/Cornell, the NYS Mediation Board, the NYS Public Employees Relation Board and the Industrial Relations Research Association of Central New York.

● **Dr. Clinton Wallington**, director of the Department of Instructional Technology in the College of Applied Science and Technology, has been selected as a monthly columnist for *Audio Visual Directions*, a monthly magazine for audio video communicators.

● **William Stratton**, associate director of the School of Computer Science and Technology in the College of Applied Science and Technology, will give a presentation on "Data Base Management Systems: A Review and Update" at a Jan. 17 meeting of the Rochester chapter of the Data Processing Management Association.

● **Dr. Richard A. Kenyon**, dean of the College of Engineering, has been elected to a two-year term on the Board of Governors of the American Society of Mechanical Engineers. For the past two years, Kenyon, a fellow of ASME, has served as the society's senior vice president and chairman of the Council on Member Affairs. Prior to that he was a regional vice president for four years, 1978-82.

● **Eric Hardy**, former assistant registrar at RIT, has been named assistant director of the Office of Facilities, Planning and Utilization, Finance and Administration Division. Director Scott Lawson said Hardy's responsibilities will be to coordinate the data processing activities of the office and to develop computer support for the office's reporting and planning processes. Hardy came to RIT in 1980 as Institute scheduling officer. As assistant registrar, he designed and implemented the registrar's office information network, computerized information distribution system.

● The new edition of *Who's Who in the East* includes the biography of **Nile Root**, associate professor and coordinator of the RIT biomedical photographic communications program in the School of Photographic Arts and Sciences. Root has been included in *Who's Who* since 1977, shortly after he was awarded a fellowship in the Biological Photographic Association. In addition to receiving more than 30 high national and international awards for his scientific photography, he has written the chapter on light microscopy for the medical textbook, *Pathobiology*. He has illustrated 16 medical textbooks. Root's personal creative photographs have been exhibited in major museums throughout the country including the Eastman House, the Boston Museum of Fine Arts, the DeCordova Museum in Lincoln, Mass., and the De Young Museum in San Francisco. He has had several one-person shows of his work with the next scheduled exhibit in the Museum of the Chatahoochee Valley Art Association in La Grange, Ga., in Feb. Root's recent interests have concentrated on computer graphics. He has presented three papers at international meetings in the past three years on the subject of computers in biomedical communications.

● **Terry S. Butwid**, assistant director for the Center for Retail Management in the College of Business, was elected vice president of the board of trustees for The Norman Howard School, a preparatory school for students with dyslexia and learning disabilities.

● **The Cooperative Education Division of the American Society for Engineering Education** has appointed **Beverly Cudney** to serve on its membership committee. Cudney is assistant director for student services in the Cen-

ter for Cooperative Education and Career Services.

● **Andrew Kitchen**, an associate professor in the School of Computer Science and Technology of the College of Applied Science and Technology, has contracted with Prentice Hall Publishers to write a book, *VAX-11 (Eleven) BASIC*, a sequel to his earlier book, *BASIC by Design*.

● **Dr. Barry Culhane**, assistant vice president for Campus Life, has been named a member of the board of directors of Junior Achievement of Rochester.

● **George Harland**, insurance and risk manager, Purchasing Department, made a presentation to Rochester Hospital Administrators regarding RIT student liability exposure and insurance for clinical experience programs in area hospitals. Coordinator for the RIT student program is Ed Stockham.

● **Patricia Pitkin**, director of libraries, Wallace Memorial Library, has announced a new administrative organization for the library. **Lois Goodman**, formerly head of Public Services, has been promoted to assistant director of Information Services, **Virginia Church**, formerly head of Technical Services, promoted to assistant director of Technical Services, and **Chandra McKenzie**, formerly head of Circulation, has been promoted to assistant director of Circulation Services. **Michael Robertson**, formerly library systems analyst, has been promoted to library programmer/analyst and **Margaret Fallon**, formerly original cataloger, has been promoted to head of Serials.

● **Zenon Elyjiw**, senior technologist at the Technical and Education (T&E) Center of the Graphic Arts, addressed 370 participants at the Foundation of the Flexographic Technical Association Color Conference in Atlanta, Ga., Dec. 7. Elyjiw spoke on printing process control and the role of the color proof. His talk included information of identifying, monitoring and prioritizing the variations involved in a printing press run.

● **Venkataswamy Raju**, assistant professor in manufacturing engineering technology, attended a week-long training program at the IBM Advanced Robotic Assembly Institute in Boca Raton, Fla., and received the "Robotic Specialist Certificate" granted by the institute. Raju was funded for this training by a grant from the Society of Manufacturing Engineers.

● **Joan Tierney**, placement counselor for science and electrical engineering technology in the Center for Cooperative Education and Career Services, recently participated on the program of the American Chemical Society's Conference on Cooperative Education in Chemistry in Washington, D.C. Tierney served as discussion leader on the topic, "Establishing and Maintaining a Co-op Program in Chemistry." Her academic viewpoint was paired with an industrial viewpoint presented by a staff administrator of E.I. DuPont deNemours.

● **Mark Cavanaugh**, former fire marshal for Park-Ridge Hospital, is fire safety specialist in the Department of Campus Safety. Cavanaugh, who began his duties Dec. 19, will report to Robert Day, public safety specialist.

● **Carolyn Berquist DeHority**, formerly coordinator of career planning and placement at Eisenhower College, has joined the RIT Student Affairs Division staff in two capacities. She is coordinator for special projects in the Office of International Student Affairs two days a week and a career counselor in the Counseling Center three days a week. DeHority received her bachelor of arts degree at Earlham College and recently received her master's degree in career and human resource development from RIT.

● **Kevin Buck** has been appointed coordinator of facilities inventory and analysis in the Office of Facilities Planning and Utilization. Buck holds a BFA in fine arts from the California College of Arts and Crafts, Oakland. His responsibilities include the continued development of RIT's facilities inventory and production of Institute building floor plans.

● **Dr. John A. White**, College of Liberal Arts associate professor, is the author of *Values and Scientists*, published this month by University Press of America, Lanham, Md. In the book, Dr. White focuses on the importance of using human values in defining and solving the problems of technology.

● **Dr. Bernadette Skobjak**, coordinator of planning, and **Ms. Debbi Veatch**, manager of special projects, NTID, presented papers at the 1983 American Vocational Association Convention in a symposium entitled "Employer Follow-up Studies in an Age of Privacy Laws" Dec. 4-5.

● **LTC Richard K. Reinholtz**, professor of military science, Department of Military Science, presented a training seminar at the Annual First ROTC Region PMS Conference held in Atlanta, Ga., Nov. 14-18. LTC Reinholtz was also a member of a panel discussion on military basic skills training and education. **Cadet T.I. Weintraub**, a senior student and photography major at RIT, assisted LTC Reinholtz in the presentation operating audio-visual educational aids.

● **SGM James M. Lyles**, chief instructor, Department of Military Science, was selected to attend the TERC, a marketing and recruiting course, sponsored by the U.S. Army at Fort Benjamin Harrison, Ind., Nov. 28-Dec. 2.

● *A Length of Wire and Other Stories*, short stories by **Megan Staffel Marks**, language and literature lecturer, College of Liberal Arts, has been published by Pym-Randall of Roslindale, Mass. The book is available at the RIT Bookstore.

● **Barbara Cocola** and **Essie Nelson**, Physical Plant building services coordinators, received Supervisor of the Year awards Dec. 8 at the annual Employer Recognition Branch of the Association for Retarded Citizens.

PERSONNEL UPDATE

Recently two new banks were added to the list of banks participating in the Institute's Direct Deposit and Payroll Savings plans.

You now are able to automatically direct deposit to the *Rochester Savings Bank* and the *Goldome* (formerly the *Genesee Valley Savings Bank*), as well as any of the banks listed below. Both of these new banks offer free checking account privileges in addition to the routine payroll saving type accounts.

Listed below are the participating banks and the services available through RIT. If you are interested in direct deposit or payroll savings plans, contact the Payroll Department for the appropriate sign-up forms. The department also will need a copy of the deposit ticket for your checking and/or savings account.

Service

Bank	(Checking A/C)	Payroll Savings
Central Trust Company	Yes	No
Community Savings Bank	Yes	Yes
Lincoln First Bank, N.A.	Yes	No
Manufacturers Hanover Trust Co.	Yes	No
Marine Midland Bank, N.A.	Yes	No
Monroe Savings Bank	Yes	Yes
Security Trust Co.	Yes	Yes
Also:		
RIT Credit Union	No	Yes
Lincoln First Bank -Seneca Falls	Yes	No
State Bank of Seneca Falls	Yes	No

Employees are reminded that the tuition waiver application procedure is as follows:

The employee completes the waiver form and a mailing label with his/her on-campus address and leaves the package with the receptionist in the Personnel office. The waiver will be processed and sent to the staff member the next day through interoffice mail. If preferred, the waiver may be picked up the following day in the Personnel office.

Waiver applications for Spring Quarter will be issued starting Monday, Jan. 23.

In order to prevent unauthorized use of waivers, beginning with Spring Quarter applications, the employee must sign each spouse or dependent waiver form.

Spouse and dependent waivers become available after the full-time or extended part-time employee has completed one year of service; dependent waivers are available to those natural or legally adopted children of the employee or the employee's spouse who are also claimed as dependent for federal tax purposes.

N·E·W·S & E·V·E·N·T·S

Non-Profit Org.
U.S. Postage
PAID
Permit 626
Rochester, N.Y.

Rochester Institute of Technology

One Lomb Memorial Drive
Post Office Box 9887
Rochester, NY 14623



J NORTON
LIBRARY
MELANIE