

LIBRARY

RECEIVED

★ FEB 25 1928 ★

U. S. Department of Agriculture



Lovett's

**Better Fruits
and Flowers**

LOVETT'S NURSERY
Little Silver, N.J.

Please Read This Page Carefully

SPECIAL NOTICE

The best assurance for you of the purity of our stock, and evidence of the extreme care we exercise in keeping it clean and true to name is that we number among our best customers thousands who, year after year, continue to select our stock exclusively for their needs. Should any stock prove otherwise, we shall be happy to immediately replace it, or to return the money paid, but it is understood that we are not liable for any amount beyond our replacement or refund offer. Certificate of inspection is attached to each shipment.

HOW TO ORDER.

To insure receipt of stock when wanted, order as early as possible. Use our standard order blank, as we can more quickly check and fill order. Be sure that your name and address are clearly written. In your address give post office, county and state, and state clearly to what points goods are to be sent. If shipping address is different than residence post office, be sure that you give us the correct shipping point. To avoid error, and to check off plants when they arrive, keep a correct copy of your order. Ladies will oblige us by prefixing their names with "Mrs." or "Miss." No change or countermand of an order may be considered as final without our written consent.

SIZE OF ORDER.

Because of the care we take in packing, wrapping, etc., of all orders, and the cost of entering, recording and billing, we can not undertake to fill an order for less than one dollar.

SUBSTITUTION.

It is our custom, should the supply of a variety become exhausted (which occasionally occurs in all nurseries), to substitute in its stead a similar sort, properly labeled, of course. When it is desired that we shall not do this, it must be so stated in the order. To simply affix the words "No Substitution" is all that is necessary.

PACKING

is executed with the utmost care. Special pains are taken to pack lightly, thereby reducing the expense of transportation to a minimum. All goods at prices quoted are packed free. Everything is labeled.

SHIPPING.

We deliver all goods to forwarders here without charge, after which our control ceases, consequently our responsibility also. We particularly caution patrons against ordering Perennial Plants and Strawberry Plants shipped by freight; they should always go by express, or in small lots by mail. Transportation charges on all goods shipped by freight or express are to be paid by the purchaser, unless arranged otherwise.

ALL CANADIAN SHIPMENTS,

either by express or mail, **must have transportation charges prepaid.** Customers will oblige us, therefore, by adding sufficient funds to cover this item.

SHIPMENTS BY PARCEL POST.

Many plants offered can be shipped to advantage by parcel post, especially to nearby points. On inside back cover page will be found a table of rates and of weights of such things as may be forwarded by mail, by which patrons are enabled to determine the cost of postage. In ordering shipment by parcel post, please do not omit to send the proper amount to cover cost of stamps, together with cost of insurance.

TERMS.

Payment should be made at time of ordering or before shipment. We prefer to make no shipment C. O. D., but will, when requested, ship in this way, provided twenty-five per cent. of the amount of an order is sent with the order, with return charges added. Kindly remit by Postal Money Order, Registered Letter, Draft, or Express Money Order. Please do not ask us to open accounts for less than \$10.00 orders.

Prices in this catalog cancel previous quotations. The prices quoted are for the quantities specified, but six, fifty or five hundred of a variety will be supplied at dozen, hundred, and thousand rates respectively. Hundred lots may not be made up at hundred rates of less than fifty of a variety.

CLAIMS,

if any, should be made upon receipt of goods, when they will be carefully and cheerfully examined and, if just, all made satisfactory. Claims made after fifteen days from receipt of goods will not be entertained. We endeavor to send out only good stock in good condition, carefully packed, in all cases; but success or failure depends in so large a degree upon the care and management after received, that we do not, because we cannot, undertake to guarantee stock to live.

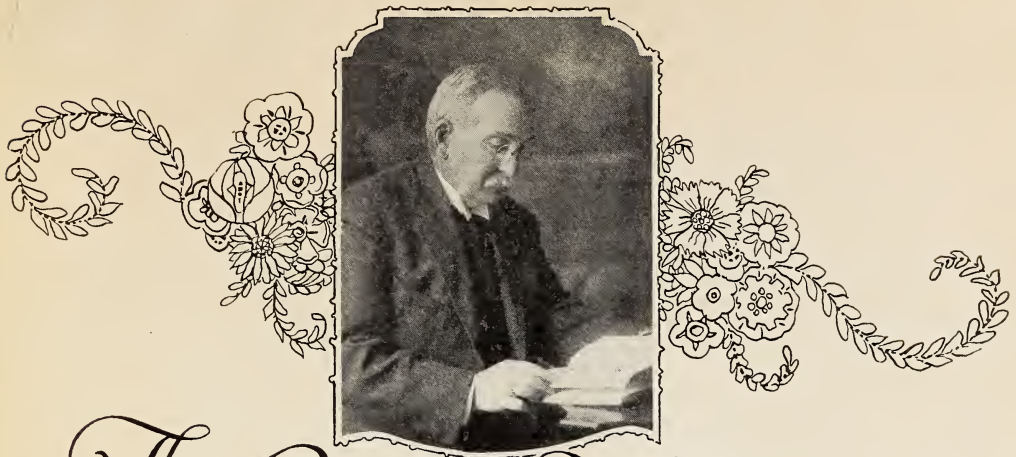
LOCATION.

Lovett's Nursery is one mile from Little Silver Depot, two miles from Red Bank, forty miles from New York City and five miles from Long Branch. To reach it from New York, take the Central Railroad of New Jersey (foot of Liberty Street or 23rd Street) or the Pennsylvania Railroad (Hudson Terminal or 32nd Street and Seventh Avenue). From Philadelphia, take the Pennsylvania Railroad (Broad and Market Streets) or the Philadelphia and Reading Railroad (Bound Brook Route).

WESTERN UNION TELEGRAPH, Little Silver, N. J.

POSTAL TELEGRAPH, Red Bank, N. J.

LONG DISTANCE TELEPHONE, No. 2200, Red Bank, N. J.



The Garden Hobbyist

A dedication of this fiftieth anniversary catalog to the memory of our founder, Mr. J. T. Lovett, Sr., for whom this great nursery stands today as a monument to his ideals and as an expression of his love for gardens.

NOT alone by the nursery which bears his name is Mr. J. T. Lovett known. His work and love for plants have passed far beyond the circle of this company and its customers until the name of Lovett is significant wherever the thought or conversation turns to nursery stock. His years of enthusiasm in a work that became his hobby have left a distinct and lasting tribute in the accomplishments he made.

Those years saw the introduction by him of many varieties, among them the Caco Grape; the Cuthbert, Golden Queen and St. Regis Raspberries; the Mt. Pocono, Joy and Mersereau Blackberries; the Van Fleet Hybrid Strawberries (including Early Jersey Giant, John H. Cook and Edmund Wilson); the Three Lovett Sisters Climbing Roses (Alida, Bess and Mary), and many others that are likewise the very best in their respective classes.

The boy who after hours of work in the farm fields could yet find time for his hobby, a garden of plants and flowers by the side of the house, and who later carried that idealism and love into his life's work, has left for you a heritage of wisdom

and experience from which you can draw profit and pleasure in your garden, whether you work amidst growing and blooming things as a hobby or a livelihood.

The ground that man prepares and plants returns to him many fold what he has given it. The inspiration of the flower turning its head to the sun after a storm; the courage of the first blossom peeping through the last snows of spring, as well as the glorious farewell of the last rose of summer; the hope and strength of plants of varied hue as they laugh and dance in the breeze; the rhythm and grace of swaying trees, and the poetry of budding branches, bring to man an enthusiasm that makes his garden a satisfaction and a delight, and a source of joy forever, that buoys him up and helps him to carry on.

And the hobby of Mr. Lovett brought him joy both from the plants and flowers he loved, and from the pleasure that his careful work gave to others in their flowers, for his indeed was a work of devotion—a life spent in growing, guarding and improving those plants that now can make your garden hobby the sunshiniest moments of your life.



Roses

A Presentation of the Best Varieties

JUSTLY, in any garden guide, to the Rose belongs first consideration. For no flower has been more idylized in prose or poem than the Rose. Wherever flowers, with all of their accompanying meaning of beauty and fragrance, are mentioned, 'tis the Rose that first springs to mind. And as it has builded the hope

of satisfaction in the desires of flower lovers, none shall be disappointed, for personal preference and secret longings for odors, colors, or shades of tender meaning, all will find their answer in the heart of a Rose. Among the first to bloom and with us until the end, the Rose has carved a niche in the heart of mankind that no other, no matter how fair or precious, can hope to efface.

Cultural Directions

Dig out the bed to a depth of 12 inches, scattering 3 to 4 inches of good top soil in the bottom of the trench. On top of this put well decayed manure to a depth of 4 to 5 inches and mix thoroughly with the top soil already in the trench. Then place good quality top soil over this until the bed is just a trifle higher than the surrounding ground. Set the Rose bushes 2 or 3 feet apart each way, placing them a little deeper than they have been growing in the nursery row, as indicated by soil marks on the bark. All budded Roses should be planted so that the place where the bud was inserted comes at least an inch or two beneath the surface of the new bed.

All classes of Roses should be pruned back severely at time of planting.

Note Carefully

We supply both budded and own-root Roses. Where varieties do best on their own roots we endeavor to supply that type. On the other hand, where a variety is constitutionally weak we supply budded stock. Early in the season we shall supply heavy, field-grown dormant plants; later (May) we propose to ship out these same strong plants—but pot grown, and they will reach customers in leaf. Late in the season we reserve the privilege to substitute unless the customer states expressly: "Do not substitute."



GOLDEN EMBLEM
A New Yellow Rose of Exceptional Merit

The Hybrid Tea (Everblooming) Roses we offer will provide a liberal display of flowers this coming June. If in doubt which varieties to select, let us call your special attention to the Lovett Dozen of Hybrid Tea Roses offered in the collection on page 7.

Hardy Everblooming Roses

Uniform prices for all varieties (unless quoted otherwise), heavy field-grown plants, each, 90c; dozen, \$9.00; 100, \$60.00.



K. A. VICTORIA
A Favorite for Years

Alexander Hill Gray—The long, pointed buds develop into large flowers of perfect form. They open lemon-yellow and assume a darker shade as they reach full size and maturity. One of the most satisfactory of all garden Roses, with attractive, glossy, disease-resistant foliage.

Amelia Gude—A cross between Columbia and Sunburst which has produced a beautiful yellow Rose, center shading to cream; very fragrant. Very vigorous, upright grower and free bloomer. Hardy.

America—A very popular garden Rose. Growth moderate, with good foliage. Flowers of exquisite form, fine substance, light glowing rose pink and of delightful fragrance.

Antoine Rivoire—Flowers large, double and of fine form; very fragrant; color rosy-flesh, with yellow ground, shaded with border of carmine.

Betty—Produces blooms of supreme beauty, especially late in the season. Its large, exquisitely scented petals are of a glowing coppery-rose color suffused with gold.

Cheerful—Shining orange-flame flowers, with heavy orange-yellow markings at base of petals.

Clara Watson—Pearl-white, peach colored center.

Columbia—Deservedly one of the most popular among rose-pink varieties. Immense flowers are slightly tinged with yellow at base of petals. Long, strong stems. Flowers of great substance and fine lasting qualities; possess delightful fragrance. See illustration on page 7.

Constance—A free flowering variety producing beautiful, long orange-yellow buds of perfect form, opening to a rounded flower of golden-yellow.

Crusader—Rich, velvety crimson of bright hue and of massive form, this Rose is one of the very finest of the reds. The flowers are very large, and extremely double, with petals of splendid substance.

Crimson Queen—One of the best and largest of the crimson flowered sorts.

Dean Hole—Very fragrant, silvery carmine flowers of attractive shape. Exceptionally large, but blooms only moderately.

Double White Killarney—Snowy white blooms with enormous petals. The opening buds are beautiful, but the flower is lacking in petals. Practically identical with the other forms of Killarney except in color, and has all their faults and virtues. It is one of the really reliable white Roses for bedding and cutting.

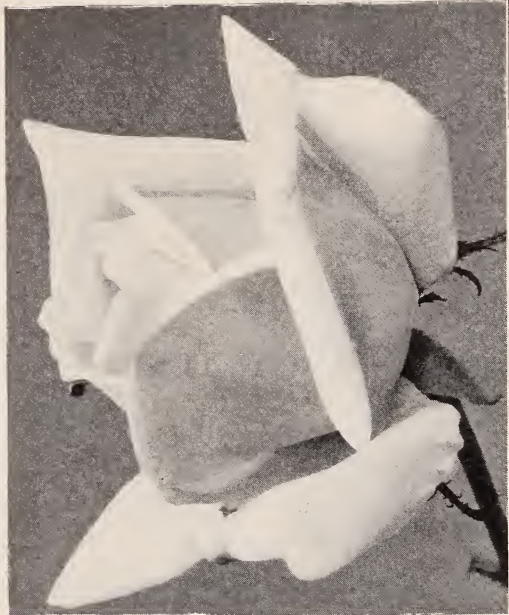
Duchess of Wellington—Enormous, tapering buds, of golden-orange, slowly opening to very large, saffron-colored flowers; sweetly scented; of great size and substance.



ETOILE DE FRANCE
A Choice Red Variety

Everblooming Roses (Continued)

Uniform prices for all varieties (unless quoted otherwise), heavy field-grown plants, each, 90c; dozen, \$9.00; 100, \$60.00.



J. J. L. MOCK

Eldorado—In this we have an exact counterpart of Miss Lolita Armour, in the large sized flowers of distinct formation, vigorous growth and free flowering habit and fragrance, but in color it is of the golden-yellow that is peculiar to the climbing Rose, Marechal Neil, with the base of the petals slightly tinted red. Each, \$1.25; dozen, \$12.50.

Edward Mawley—One of the finest of all dark crimson Roses. A true perpetual-flowering Hybrid Tea. Received the gold medal of the National Rose Society of England.

Etoile de France—A grand, deep red Rose which blooms all summer. Flowers are large, full velvety crimson and richly fragrant. Illustrated on page 3.

Frank W. Dunlop—The color is a most pleasing shade of soft pink, deepening towards the center. Bud perfect in form and substance, long and pointed, opening full and double.

Francis Scott Key—Fine, erect grower of great hardiness; very double crimson flowers of noble make-up.

Golden Emblem—Intensely yellow buds; blooms of superb shape and texture, borne freely on erect, branching plants; attractive, glossy foliage. One of the finest Roses ever introduced. Each, \$1.25; dozen, \$12.50. Illustrated on page 2.

Gruss an Teplitz—The one variety that is always in bloom—and we mean it! A bright, pleasing crimson. Splendid for bedding. Illustrated on page 6.

Hermosa—Light pink, well formed and borne in clusters. For continuous bloom, this Rose is a veritable wonder. Very fine for bordering drive-ways, because of its hardy, neat growth.

Hoosier Beauty—Dark red flowers of noble shape and pronounced fragrance.

Jonkheer J. L. Mock—Clear imperial pink, reverse of petals rosy silvery white. A giant of the La France type. Awarded two gold medals, one silver medal, and five first prizes in Europe.

Kaiserin Augusta Victoria—After serving for a third of a century this still is, to our minds, the grandest white in cultivation. A continuous bloomer, producing quantities of snow white flowers from June until frost. Illustrated on page 3.

Killarney—Of a lovely deep pink, equally attractive in bud or full bloom.

Killarney Brilliant—An even darker pink than Killarney. Flowers of true Killarney type. Splendid grower and free bloomer.

Lady Hillingdon—One of the most popular varieties, producing yellow flowers of a particularly pleasing apricot shade. It is one of the most free flowering. Like most of the yellow varieties, it is of rather weak growth; however, it is one of the most fragrant.

Legion (Amer. Legion)—The color is a pleasing shade of cerise which it retains until all the petals have fallen; a great producer.

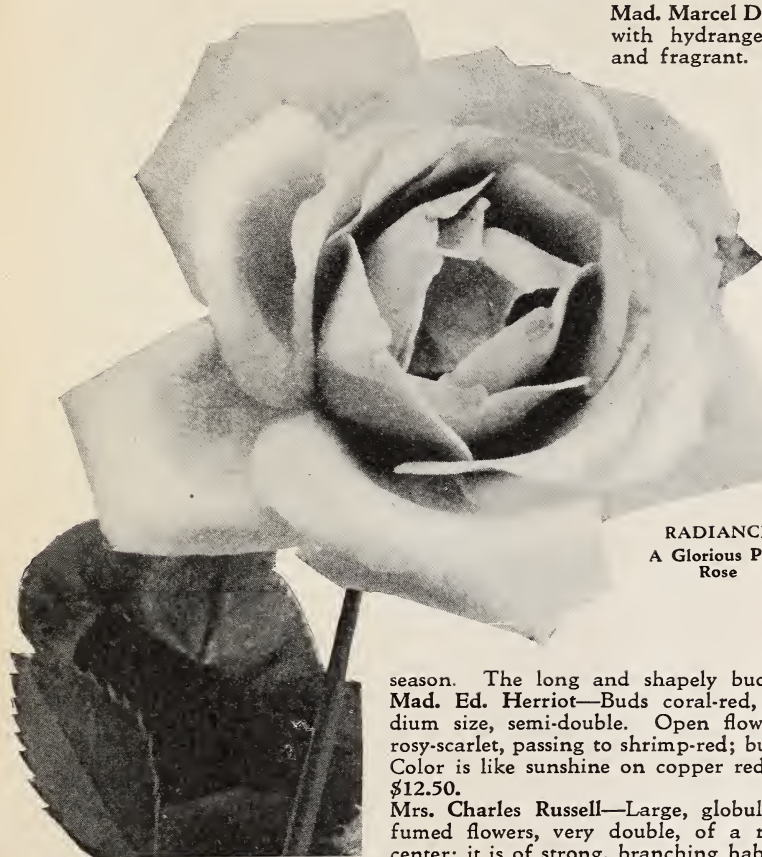


KILLARNEY

A Favorite That Will Always Rank Among the Most Popular

Hardy Everblooming Roses (Continued)

Uniform prices for all varieties (unless quoted otherwise), heavy field-grown plants, each, 90c; dozen, \$9.00; 100, \$60.00.



RADIANCE
A Glorious Pink
Rose

Mad. Marcel Delaney—Delicate color shaded with hydrangea-pink. Flowers large, full and fragrant.

Maman Cochet—The finest and best pink Rose for blooming out-of-doors. The buds are very large, handsome and of pointed form; the flowers are full and fine, flesh pink with saffron at base of petals. Plant of strong growth, very hardy and a free bloomer, (blooming all the time).

Miss Lolita Armour—Deep coral-red with golden-yellow suffusion. Base of petals golden yellow with coppery sheen. A strong, vigorous grower. Each, \$1.25; dozen, \$12.50.

Mrs. Aaron Ward—One of the most dependable of all garden Roses. Its deep Indian yellow flowers, agreeably shaded in various tints of orange, are produced throughout the

season. The long and shapely buds are particularly attractive. **Mad. Ed. Herriot**—Buds coral-red, shaded yellow at base; medium size, semi-double. Open flowers coral-red, shaded yellow, rosy-scarlet, passing to shrimp-red; buds long, slender and pointed. Color is like sunshine on copper red metal. Each, \$1.25; dozen, \$12.50.

Mrs. Charles Russell—Large, globular, well formed, highly perfumed flowers, very double, of a rosy-carmine with rosy-scarlet center; it is of strong, branching habit with splendid foliage.

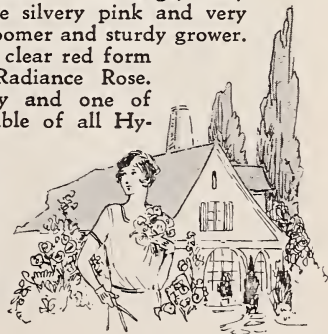
Ophelia—Salmon-flesh, shaded rose, with a chamois-color center. The buds and flowers are beautifully formed and colored.

Premier—Vigorous plants of robust constitution. Flowers are borne singly on stiff, almost thornless stems. A rich dark pink of full shape and fine size. Fragrance delightful.

Radiance—One of the most gorgeous American sorts as yet introduced. The large, finely formed flowers are silvery pink and very brilliant. Free bloomer and sturdy grower.

Red Radiance—A clear red form of the popular Radiance Rose. Exceedingly hardy and one of the most dependable of all Hybrid Tea Roses.

Rhea Reid—The color is a vivid scarlet crimson, and the flowers are marvels of beauty; large, bold and of splendid substance.



Los Angeles—Bears enormous flowers of a flame pink toned with coral and shaded with gold at the base of the petal. Fragrant as an American Beauty. Vigorous growth. Each, \$1.25; dozen, \$12.50.

Louise Catherine Breslau—Astonishing in color. Salmon-red buds, opening to large flowers of orange-pink, glowing with yellow and copper. Double, but open cupped form when fully expanded. Color is retained well when cut. Stem is stiff, but not long. Grows bushy and vigorous, foliage glossy. Repays extra care and is effective in beds.

Madame Abel Chatenay—Carmine tinted salmon. Flowers large, exquisitely formed and charmingly colored.

Mme. Butterfly—Fine, light pink buds and flowers, tinted with gold near base of petals; exquisite shape; richly perfumed.

Madame Caroline Testout—Brilliant satiny rose, deepening at center and bordered with silvery rose; immense, broad petals and extremely large flowers.

Hardy Everblooming Roses (Continued)

Uniform prices for all varieties (unless quoted otherwise), heavy field-grown plants, each, 90c; dozen, \$9.00; 100, \$60.00.



SOUV. DE CLAUDIUS PERNET

A Popular French Rose of Exquisite Beauty

Robin Hood—Bright, rosy-crimson of a peculiarly soft and pleasing hue. Plants vigorous and free blooming.

Rose Marie—As beautiful as its name! Large, clear rose-pink, most fragrant flowers. Vigorous.

Souv. de Claudius Pernet—Another season's reports from all sections see this peerless Rose emerge triumphantly as the most dependable golden-yellow garden Rose of today. It is equally charming in bud, or while opening, and after fully blooming. The plants grow freely, and produce flowers liberally. It has very attractive green foliage and, in common with all Pernetiana Roses, is quite thorny. Each, \$1.25; dozen, \$12.50.

Souvenir de Georges Pernet—It is a strong, vigorous grower and produces its large flowers which are beautiful in both bud and fully developed bloom and which are of an intense oriental red, shading to cochineal-carminé at the margin of the petals, the whole being suffused with a golden sheen; a brilliancy of coloring. Each, \$1.25; dozen, \$12.50.

Sunburst—Long, lovely buds, which open to large, perfectly formed and double flowers of sulphur-yellow; makes this one of the most attractive varieties in its color class. Strong plants of spreading habit; quite hardy, but in common with the majority of yellow Roses appreciates protection in cold climates.

Templar—Clear, bright red, of exceedingly double form and with fine, strong stems.

William F. Dreer—Wonderfully beautiful flowers of golden fawn and orange-pink; moderately fragrant. Each, \$1.25; dozen, \$12.50.

White Maman Cochet—A duplicate of its parent, the well-known and justly popular Maman Cochet. Color, creamy white, tinged on the edges of the petals with pink. One of the finest white Roses for outdoors.

HIGH QUALITY AND SERVICE

Kansas City, Mo.

I want to tell you that I sincerely appreciate the very great courtesy and care which you extended to me in connection with my small order No. 2610. I have never received anything at any time from the Lovett Nursery except the same courtesy and consideration.

The roses were splendid field grown plants, and any failure on their part would certainly not be due to any fault of yours.

MINNIE LONG SLOAN.



GRUSS AN TEPLITZ



LOVETT'S SUPERB COLUMBIA

This collection, carefully selected by our experts, assures a most attractive assortment of Roses. In fact, for many homes, it will constitute all the Roses required for a very handsome and satisfactory planting. A very material saving from the price of single specimens.

Columbia—(Color plate, page 7).
Duchess of Wellington.

Etoile de France—(Color plate, page 3).

Golden Emblem—(Shown in color on page 2).

Gross an Teplitz—(Color plate, page 6).

J. J. L. Mock.

K. A. Victoria—(Color plate, page 3).

Maman Cochet.

Radiance.

Red Radiance.

Sunburst.

Wm. F. Dreer.

These 12 Hardy Roses,

Only \$8.50

Selected 2-year Field-grown Plants

Hybrid Perpetual Roses

Heavy field-grown plants, each, 75c; dozen, \$7.50; 100, \$50.00.

WITH the exception of *Rosa Rugosa*, these are the hardiest of all Roses. They are of vigorous, upright habit, with large leaves and very large, full, double, richly fragrant flowers, which are produced in profusion in June. In order to obtain the finest flowers, prune severely in early spring, manure liberally and hoe often; plant 2 to 3 feet apart.

Alfred Colomb—Bright red; one of the best.

Captain Christy—Of delicate flesh color, with both buds and flowers large.

Frau Karl Druschki (White American Beauty or Snow Queen)—Snow-white; flowers extremely large, yet beautifully formed. Growth is strong and vigorous. Abundant bloomer.

General Jacqueminot—Brilliant red or scarlet-crimson; large and full. Very fragrant.

Geo. Ahrends (Pink American Beauty)—Bound to become as popular as Druschki. Strong, robust grower, making a sturdy bush; free bloomer and absolutely hardy everywhere. The color is delicate pink; deliciously fragrant.

George Dickson—Velvety black-crimson, reverse veined deep crimson-maroon, with Tea Rose perfume.

J. B. Clark—After twenty years this Rose still ranks among the foremost. Deep scarlet, shaded blackish maroon. Flowers are of exceptional size and are produced freely during June and again in the fall.

Mad. Gabriel Luizet—Light pink. A splendid sort.

Magna Charta—Extra large, full flowers of unusual depth; bright rose-pink in color.



PAUL NEYRON
Much Reduced

Paul Neyron—The largest of all Roses; bright, clear, shining pink; finely scented.

Prince Camille de Rohan—Very deep crimson, shaded maroon on inner petals. One of the oldest stand-bys and still unsurpassed in many ways.

Ulrich Brunner—Among the largest of all Hybrid Perpetuals, when properly grown and disbudded. A bright cherry-red of great brilliancy.



FRAU KARL DRUSCHKI
Known as the White American Beauty

Special Offer

SIX LEADERS

We shall be glad to supply one plant each of the six outstanding favorites:

- 1 F. K. Druschki
- 2 Gen. Jacqueminot
- 3 J. B. Clark
- 4 Magna Charta
- 5 Paul Neyron
- 6 Ulrich Brunner

for
\$3.50

STANDARD OR TREE ROSES

Hybrid Perpetual varieties, budded on strong 3 foot stems of the well-known *Rugosa* Rose:

Frau Karl Druschki—White.

Hugh Dickson—Crimson.

Paul Neyron—Pink.

Price, \$3.50 each



America's Finest Climbing, Trailing and Pillar Roses

Price (except as noted), strong two-year field-grown plants, 75c each;
\$7.50 per dozen; \$50.00 per 100.

RAMBLERS, as we have come to know this climbing and trailing species of Rose, make their greatest contribution to beauty by converting a bleak wall or a barren trellis into a sightly spot. Their foliage provides a screen against the sun and, when needed, against intruding eyes. The sternness of a fence is softened by their blossoms and sprightliness.

It was our pleasure and great honor to have as a near neighbor for many years the late Dr. Van Fleet. His work in strengthening Rambler Roses has made him famous. As a natural consequence of his many years of study and experiment his hybrids have established for themselves a pre-eminent place. You will find the best of them listed in the following pages—particularly directing your attention to the three varieties, named The Lovett Sisters, on page 10.



PAUL'S SCARLET CLIMBER
A Sensational Climbing Rose You Should by all Means Grow



EXCELSA RAMBLER
A Wonderful Climber

Through intimate contact with leaders in the field and careful attention to cultural requisites we can offer a collection of Climbing Roses, each proven to be the best of its particular color or type. The conditions they must meet in your gardens were anticipated by the tests we gave them at the nursery.

Aviateur Bleriot—Clusters of saffron-yellow flowers, with centers of golden-yellow. Very vigorous and consequently a profuse bloomer year after year. Considered by many the finest yellow climbing Rose in cultivation today. Each, \$1.00; dozen, \$10.00.

Climbing American Beauty—Of the same color and fragrance as the popular variety whose name it bears. It is wonderfully free flowering and an exquisite variety. An early bloomer, flowers being borne either singly or in clusters of three. Of fine form and fragrance.

Crimson Rambler—Oldest and best known of the ramblers. Everyone is familiar with its large clusters of crimson flowers.

Dorothy Perkins—Clear shell-pink, double Roses in clusters that are very lasting. It is a strong grower, very hardy, and a marvelously profuse bloomer.

Climbing Roses (Continued)

Price (except as noted), strong two-year field-grown plants, 75c each;
\$7.50 per dozen; \$50.00 per 100.

Dr. W. Van Fleet—Delicate, shell-pink, mildly perfumed flowers are produced abundantly. The charming buds are large and pointed, while the open blooms are large and most attractive. Splendid for cutting.

Emily Gray—A hardy yellow climbing Rose. Buds of attractive shape borne on long, stiff stems.

Ernest Grandpier—Splendid for cut flowers. It is glistening white, and very double. A thrifty grower and one of the very finest. Each, \$1.00; dozen, \$10.00.

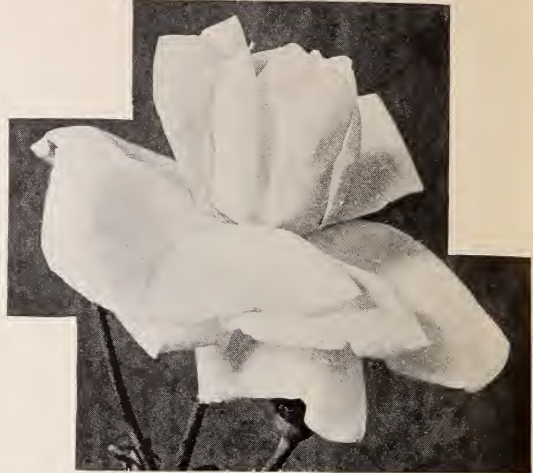
Excelsa (Red Dorothy Perkins)—Brilliant crimson. Has the vigor and profuse bloom of the Dorothy Perkins, and its double flowers of good size are borne in clusters of thirty to forty each. Excelsa is an improved Crimson Rambler.

Flower of Fairfield—A truly everblooming Crimson Rambler, practically mildew-proof and of hardiest constitution.

Gardenia (Hardy Marechal Niel)—The very pretty, pointed buds of this Rose are nankeen yellow, turning to waxy white when expanded, and are held on long stems.

Lady Gay—A most profuse bloomer, in large, loose clusters. Its color is soft cherry pink, changing to blush white.

Mary Wallace—A Dr. Van Fleet hybrid, of the Pillar Rose type, forming strong, upright bushes 6 to 8 feet tall. It blooms with great freedom during June, and again bears a liberal crop of flowers during late summer and fall. The semi-double flowers are of bright, clear rose pink color with salmon tints at base of petals. It is one of the largest of all Wichuraiana hybrids, its flowers exceeding 4 inches in diameter. Strong field-grown plants, each, \$1.00; dozen, \$10.00.



MARY LOVETT

A Van Fleet Rose of Unusual Charm

The Lovely Trio of "LOVETT SISTERS" CLIMBING ROSES

Price, heavy field-grown plants, each, \$1.00;
dozen, \$10.00.

Among Rose hybridizers few have to their credit a greater number of worth while creations than the late Dr. Van Fleet. All the Van Fleet hybrids are particularly valuable in having deep, glossy mildew-proof foliage. We count the three Van Fleet Hybrids, offered on this page, among the really triumphant achievements of Dr. Van Fleet's life.

SPECIAL OFFER

We will supply one each of the three lovely Lovett Sisters Rose, strong field-grown plants, for **\$2.50**



GARDENIA CLIMBER

Alida Lovett—In habit it is quite like the popular Van Fleet Rose, but with larger and more beautiful, mildew-proof foliage, while the color of the flower is brighter. Both buds and flowers are large, of ideal form, and held on stiff stems a foot and a half to two feet long, and the color is a lively, bright shell-pink with shadings of rich sulphur at the base of the petals—a combination that is both novel and beautiful. The plant is of strong growth, a free bloomer and of ironclad hardihood; flowering for a long season.

Bess Lovett—Is of strong growth, with large, glossy Silver Moon-like foliage, and, what is remarkable in a climbing Rose, the flowers are exquisitely fragrant. Flowers are lavishly produced; are of good size, double, full and cupped form, being similar in makeup to the Climbing American Beauty, but very much brighter red in color and more fragrant by far.

Mary Lovett—This is much like the beautiful Dr. W. Van Fleet Rose, except in that the large, full flowers are pure snow white. They are held on long, strong stems and are delightfully sweet-scented.

The Choicest Climbing Roses

Price (except as noted), strong two-year field-grown plants, 75c each; \$7.50 per doz.; \$50.00 per 100.

Paul's Scarlet Climber—A very fine English sort of recent introduction. It surely has won a place for itself, with its large, brilliant, scarlet flowers produced in glorious profusion. Though but semi-double, the flowers are of surprisingly large size and borne long after the June bloomers have seen their day. Winner of many highest awards. Heavy two-year-old field-grown, each, \$1.00; dozen, \$10.00.

Purity—A white of exceptional size and beauty. Pronounced the finest semi-double white in cultivation to date. Heavy two-year-old field-grown, each, \$1.00; dozen, \$10.00.

Roserie (Red Tausendschoen)—Here is the deep, cerise pink or carmine companion of the very popular "Thousand Beauties." It is as free blooming and of the same vigorous habit of growth.

Silver Moon—Its buds are exquisite in form and color, and its many semi-double flowers are very pretty and decorative, opening a soft nankeen-yellow and quickly changing to pure silvery white; are four inches or more in diameter and slightly perfumed. Each, \$1.00; dozen, \$10.00.

Tausendschoen (Thousand Beauties)—A fine Rose indeed. It is a very strong grower, and from early June until well into July it is literally covered with clusters of decorative, semi-double flowers of varied shades of deep to light pink and white. Its bloom is produced in actually bewildering profusion. A peculiar characteristic of this variety is that it has no thorns.

White Dorothy Perkins—A sport of the popular Dorothy Perkins, and like it in every way except that its flowers are white. Free in bloom and with disease-resisting foliage.

Baby Ramblers or Polyantha Roses

Price (except as noted), strong two-year field-grown plants, 75c each; \$7.50 per doz.; \$50.00 per 100.

Roses of this class may truly be termed "ever-blooming" Roses. They start in June and, without interruption, bloom all summer and fall.

For best results they should be planted about three feet apart, although in a solid bed two feet apart is ample. With us, all those offered are hardy without protection.

Baby Alan—This variety is one of the most attractive Polyantha Roses that we have seen. The individual blooms resemble somewhat flowers produced by the pink-flowered form of Double English Daisies. When Baby Alan is in full bloom it is completely covered with these most attractive, very double flowers of shining pink. Another very desirable quality presented by this wonderful new Rose is the fact that it blooms almost continuously from June until freezing weather. If any of our customers, after having grown this variety, are not in every way satisfied, we will thank them to write us to this effect, and we will promptly refund the amount that they have paid us for plants of Baby Alan. Heavy field-grown two-year-old plants, each, \$1.50; dozen, \$15.00.

Baby Rosamunde—We are indeed fortunate in being the first to offer this splendid new Polyantha or Baby Rambler Rose. The flowers are semi-double and of a delightful rose-pink color. Like most of the Roses of its class, this variety blooms almost continuously from June until freezing weather puts an end to its glory. Heavy field-grown two-year-old plants, each, \$1.00; dozen, \$10.00.

Crimson Baby Rambler (Mme. Norbert Levavasseur)—Produces a constant display of small, double, purplish crimson Roses in clusters.

White Baby Rambler (Katherine Zeimet)—The pure white, double flowers of this variety are produced in great profusion.

MIRACLE BRAND ROSE AND SHRUB FOOD

A scientifically compounded chemical fertilizer holding in correct proportion all those elements needed by Roses and other plants of shrubby character, to do their best. It encourages a luxuriant growth and supplies the plants with the vigor needed for greatest blooming results. 5-lb. bags, 75c; 10-lb. bags, \$1.25. Special quotations on larger quantities on request.



BABY ROSAMUNDE
Unexcelled for Borders or Clumps

Miscellaneous Roses of Great Hardiness



F. J. GROOTENDORST
A Hardy Rugosa Rose

HARDY HYBRID RUGOSA ROSES

Price (except as noted), heavy two-year-old plants, each, 75c; dozen, \$7.50.

Amelie Gravereaux—Carmine-red, full double, very fragrant. One of the new and one of the very choicest of the Rugosa Hybrids. The flowers open as a rich carmine-red which turns to deep American Beauty color as they mature. The large flowers are unusually beautiful in the partially opened bud. The Amelie Gravereaux has a delightful fragrance. It blooms liberally in June, but even more so in August and September. This is a hardy and thrifty bush of beautiful foliage which makes a real attraction as a shrub. We consider this new creation a Rose "par excellence" rapidly winning favor.

Each, \$1.25; dozen, \$12.50.

Conrad F. Meyer—An exceptionally vigorous variety. The clear, silvery-rose flowers are very large, quite double, and showy in the extreme. They are borne on long, strong stems and are highly fragrant.

F. J. Grootendorst—Large clusters of bright orange-red flowers borne throughout the season.

New Century—Clear, flesh-pink, with deeper center and creamy edges. Delightfully fragrant and considered one of the finest Rugosas.

Sir Thomas Lipton—This Van Fleet hybrid may be termed the white form of C. F. Meyer.

PINK GROOTENDORST

This variety is practically identical with its parent, F. J. Grootendorst, excepting that it produces flowers of a Killarney Pink color, while the parent variety produces bright orange-red flowers. Strong field-grown two-year-old plants, each, \$1.50; dozen, \$15.00.

ROSA HUGONIS

Spectacular in its exotic beauty. A many branched shrub, growing 6 to 8 feet tall, rearing slender sprays in all directions, gracefully arching beneath loads of bright yellow, single flowers, an inch and a half in diameter. The flowers are borne on the previous season's growth and appear very early in the spring, before the foliage. Later in the season, it throws up many new branches of a beautiful deep red color, which makes the shrub a garden attraction during the entire growing season. Extra strong field-grown plants, each, \$1.25; dozen, \$12.50.

HARDY HYBRID ROSES

Harrison's Yellow—One of the finest semi-double, bright golden-yellow Roses. The flowers cover the whole plant in early spring, and are very fragrant.

Soleil d'Or—Orange-gold and pink shaded flowers of exceptional fragrance.

Persian Yellow—Double, deep golden-yellow flowers during late spring and early summer.

Price, any of the above, each, \$1.00; dozen, \$10.00.

MOSS ROSES

These have exceptionally heavy, almost leather-like foliage, while the calix of each flower is surrounded thickly with mossy sepals. Moss Roses belong among the hardiest of the species, form impenetrable hedges and are quite free bloomers, while the flowers are delightfully fragrant.

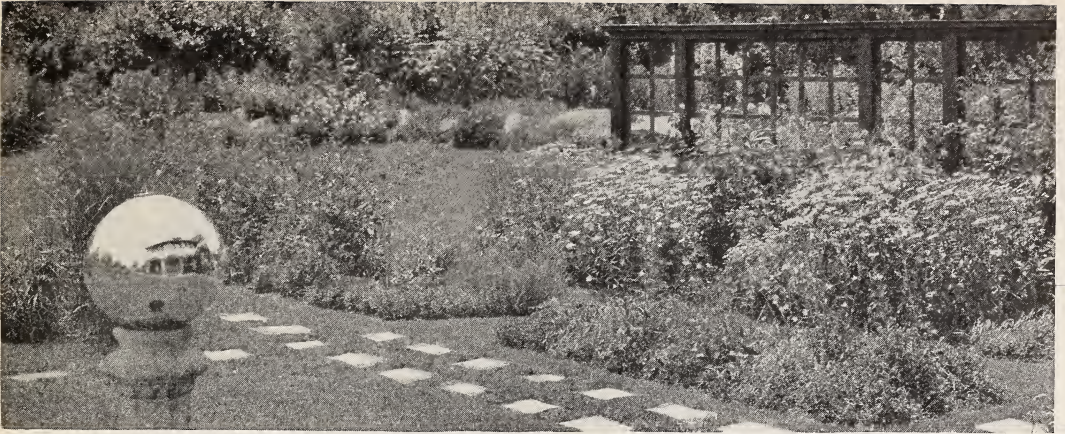
SPECIAL OFFER

Four choice varieties, in a variety of colors, that will be a delight to everyone.

Pale rosy pink Deep rosy pink
Glossy crimson Pure white

Any of these four varieties, heavy field-grown, each, 75c; dozen, \$7.50.

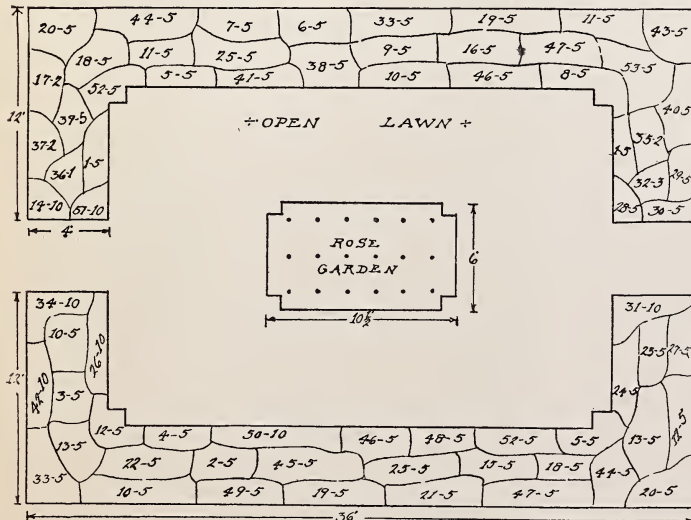
We will send one each of these four unique Moss Roses for **\$2.50**



Lovett's Fiftieth Anniversary Formal Garden

HERE is a wonderful opportunity to plant a complete garden at a remarkable reduction from regular retail prices. This garden is complete in every respect. Fifty-three varieties of strong, field-grown, hardy perennials of blooming age, with eighteen hardy rose bushes of ten different varieties, a very liberal quantity of each variety of perennials. If arranged according to the above plan a colorful, delightful garden is yours for only \$50.00, a regular retail value of \$93.00. Do not overlook this opportunity. Large planting plan sent free with each order.

| Key | Quan. | Botanical Name | Rate | Key | Quan. | Botanical Name | Rate |
|-----|-------|--------------------------------|---------------|-----|-------|-----------------------------|------------|
| 1 | 10 | Achillea ptarmica | \$ 1.67 | 28 | 5 | Iris Ger. Florentina Alba | 1.25 |
| 2 | 5 | Anchusa Dropmore | 1.00 | 29 | 5 | Iris Germanica—Iris King | 1.25 |
| 3 | 5 | Anemone Japonica | 1.25 | 30 | 5 | Iris Germanica—Queen of May |75 |
| 4 | 5 | Anthemis tinctoria | 1.00 | 31 | 10 | Iris Pumila—Mixed Var. | 1.67 |
| 5 | 10 | Aquilegia—Mrs. Scott Elliott's | 2.92 | 32 | 3 | Lilium Melpomene | 1.20 |
| 6 | 5 | Aster—Robert Parker | 1.00 | 33 | 10 | Lysimachia Cletheroides | 1.66 |
| 7 | 5 | Aster—Novi Belgi Climax | 1.00 | 34 | 10 | Myosotis P. Semper. | 1.67 |
| 8 | 5 | Astilbe—Queen Alexandra | 3.75 | 35 | 2 | Peony, Courronne D'Or | 1.50 |
| 9 | 5 | Campanula Persicaefolia | 1.00 | 36 | 1 | Peony, Edulus Superba |75 |
| 10 | 10 | Centaurea Montana | 1.66 | 37 | 2 | Peony, Karl Rosefield | 2.50 |
| 11 | 10 | Chrysanthemums—Mixed Var. | 2.08 | 38 | 5 | Phlox, Eclairer | 1.00 |
| 12 | 10 | Shasta Daisy | 1.67 | 39 | 5 | Phlox, Rheinlander | 1.00 |
| 13 | 10 | Coreopsis Lanceolata | 1.66 | 40 | 5 | Phlox, Mrs. C. Dorr | 1.00 |
| 14 | 10 | Convallaria Maj. | 1.25 | 41 | 5 | Phlox, Thor | 1.00 |
| 15 | 5 | Delphinium Belladonna | 1.25 | 42 | 10 | Phlox, subulata | 1.66 |
| 16 | 5 | Delphinium Hybridum | 1.25 | 43 | 5 | Physallis Franchetti | 1.00 |
| 17 | 2 | Dicentra Spectabilis | 1.50 | 44 | 10 | Physostegia Virginica | 1.67 |
| 18 | 10 | Digitalis gloxiniaeflora | 1.67 | 45 | 5 | Platycodon Mariesi | 1.00 |
| 19 | 10 | Eupatorium coelestinum | 1.67 | 46 | 10 | Pyrethrum Ros. Hybridum | 1.66 |
| 20 | 10 | Gypsophila Paniculata | 1.66 | 47 | 10 | Salvia Azurea | 1.67 |
| 21 | 5 | Helenium—Riverton Beauty | 1.25 | 48 | 5 | Statice Latifolia | 1.00 |
| 22 | 5 | Heliopsis Pitcheriana | 1.00 | 49 | 5 | Stokesia Cyanea | 1.00 |
| 23 | 5 | Hemerocallis—Gold Dust | 1.00 | 50 | 10 | Dianthus Barbatus | 1.67 |
| 24 | 5 | Hemerocallis Thunbergii | 1.00 | 51 | 10 | Viola—Jersey Gem | 2.09 |
| 25 | 10 | Hollyhocks, Double | 1.67 | 52 | 10 | Dianthus—Hardy Pinks | 1.67 |
| 26 | 10 | Iberis Sempervirens | 1.25 | 53 | 5 | Helianthus Multi. Grand. | 1.00 |
| 27 | 5 | Iris Kaempferi | 1.75 | | | | |



18 Roses

| | | | |
|---|------------------|-------|------|
| 2 | Columbia | | 1.80 |
| 2 | Etoile de France | | 1.80 |
| 2 | K. A. Victoria | | 1.80 |
| 3 | Radiance | | 2.70 |
| 3 | Red Radiance | | 2.70 |
| 2 | Wm. F. Dreer | | 2.50 |
| 1 | Guss an Teplitz | | .90 |
| 1 | Jonk. J. L. Mock | | .90 |
| 1 | Lady Hillingdon | | .90 |
| 1 | Maman Cochet | | .90 |

Retail value of Collection \$93.02

See General Lists of Varieties for Detailed Descriptions and Common Names.

All for
\$50.00

Hardy Perennials

General List of Hardy Perennials

OLD-FASHIONED Hardy Flowers that will never grow old, for their beauty and hardiness are more and more firmly entrenching them in the hearts of flower lovers each passing year. Their gay colors on through the summer, into the fall, until winter sets in, will delight and endear these sturdy flowers to you. Those offered in this catalog are the proved and tried "Best" for all sections. All come to you as well-developed plants, most of them grown in nursery rows. They are bound to bloom for you, and bloom abundantly this very year.



The weight of Hardy Perennial plants varies greatly with the different varieties. However, in the table on inside back cover page the average weight of these plants will be found, from which patrons who wish shipment by mail can determine the amount to remit for postage.

All varieties (unless otherwise noted), each, 20c; dozen, \$2.00;
100, \$14.00.

ACHILLEA (Milfoil)

Parmica. BOULE DE NEIGE—15 to 18 inches. The finest of all the Achilleas. Produces larger and more perfect white flowers than Achillea "The Pearl"; splendid for cutting.

Filipendulina—A strong growing plant with fern-like foliage, bearing large, flat heads of yellow flowers. July-August. 4 feet.

ACONITUM (Monkshood)

A class of plants which bloom during late summer and throughout the fall months; thrives when planted in the full sunlight, also partial shade. Produces hood-shaped flowers on bold spikes.

Fischeri—A dwarf growing variety with pale blue flowers. Grows only about 18 inches in height.

Autumnale—Produces dark purplish-blue flowers the latter part of September, and throughout the month of October.

Each, 35c; dozen, \$3.50.

AEGOPODIUM (Bishop's Weed)

Podogaria Variegata—9 to 12 inches. A rapidly growing plant, with variegated green and yellow foliage which it holds without fading, even during the hottest weather. A fine border plant for edging groups of shrubs.

AJUGA (Bugleweed)

Reptans—A splendid variety for planting in rockeries, or for carpeting the ground; thrives when planted in moist, shady locations, grows 3 to 4 inches high, and produces quantities of deep purple-blue flowers.

ALYSSUM (Madwort)

Saxatile compactum (Dense Golden Tuft)—9 inches. Flat clusters of small, cheerful, light yellow flowers in early spring. Invaluable for rock planting.



Transform Your Back Yard Into a Charming Perennial Garden That You Will Enjoy Throughout the Summer

Hardy Perennials (Continued)



AQUILEGIA
The Columbine of Grandmother's Garden

AQUILEGIA (Columbine)

Old-time favorites. Thrive in all soils, even though wet and shaded. Among the earliest flowers of early spring and absolutely hardy and reliable everywhere.

Canadensis (Wild Honeysuckle)—18 inches. Bright red and yellow flowers, on long stems.

Chrysantha—18 inches. Flowers of rich golden yellow; blooms for two months.

Coerulea—18 inches. Blue with white corolla.

Glandulosa (Blue Siberian Columbine)—1½ feet. One of the handsomest, with large, pale blue flowers. May and June.

Long Spurred Hybrids—18 inches. The finest of the Columbines. The large flowers are of varied shades of blue, lavender, red and white.

Mrs. Scott Elliott's Improved Long Spurred Aquilegias—This new Columbine strain of Mrs. Elliott's is by far the finest that has come to our attention in a decade. Not only are the individual flowers larger, and the spurs more pronounced, but the colors are brighter and there is a greater variety of them. Those who are in doubt as to a suitable strain of Aquilegias, cannot go wrong in choosing Mrs. Elliott's. Each, 35c; dozen, \$3.50.

ARTEMISIA

Lactiflora—4 to 5 feet. A desirable new border plant, with large branching panicles of creamy white flower heads, produced in late summer. Fragrant. Each, 35c; dozen, \$3.50.

Stelleriana (Old Woman)—1½ feet. Foliage deeply cut; silvery white.

SILVER KING—One of the outstanding and truly meritorious novelties among hardy plants introduced during the last few years. Each, 75c; dozen, \$7.50.

ARABIS (Rock Cress)

Albida (Alpina)—8 to 12 inches. A charming little rock plant of low-tufted habit, covered with pure white, fragrant flowers from early spring to mid-summer; thrives in dry places.

ARMERIA

Meritima Lauchena (Sea Pink)—A dwarf growing perennial with attractive, deep rose colored flowers. In growth the plants resemble Hardy Pinks.



ACHILLEA—The Pearl

SPECIAL COLLECTION

ANEMONE JAPONICA

Three of these excellent perennial plants, one each of the following varieties:

Queen Charlotte, Rubra Superba and Whirlwind, only.....

60 Cents

ANCHUSA (Alkanet)

Dropmore. HEAVENLY BLUE FLOWER—4 to 5 feet. The flowers are an inch or more across; freely produced in large branching heads during June and July. Of delightful gentian-blue.

Opal—3 to 4 feet. Flowers somewhat larger than Dropmore, of a beautiful turquoise-blue.

ANTHEMIS (Chamomile)

Tinctoria (Golden Marguerite)—2 feet. A bushy plant with dark green, finely cut foliage and clear golden-yellow flowers. June-July.

ANEMONE JAPONICA (Japanese Anemone)

An exceedingly showy group of perennials, with most ornamental, leathery-like foliage, above which rear the handsome, long-stemmed flowers. Anemones should be particularly prized because they bloom when most hardy flowers are entering their winter rest.

Alba—18 inches. Single white flowers, yellow stamens.

Queen Charlotte—2 feet. Produces beautiful, semi-double pink flowers of extra large size.

Rosea Superba—18 inches. Valuable for its fine form and beautiful delicate rose color.

Rubra Superba—18 inches. The fine deep red form.

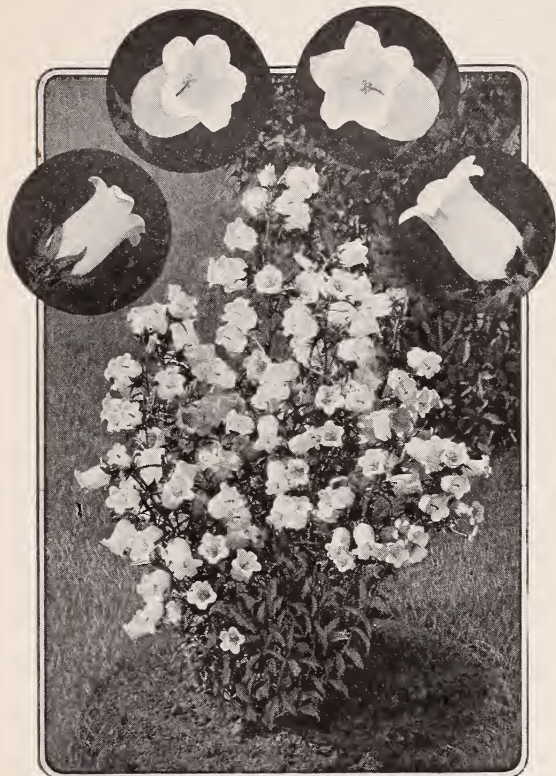
Whirlwind—18 inches. Semi-double pure white flowers, 2 to 3 inches across.

Each, 25c; dozen, \$2.50; 100, \$17.50.

All varieties (unless otherwise noted), each, 20c; dozen, \$2.00; 100, \$14.00.

Hardy Perennials (Continued)

All varieties (unless otherwise noted), each, 20c; dozen, \$2.00; 100, \$14.00.



CANTERBURY BELLS

ASTILBE (Spirea)

Handsome border plants with most attractive foliage and substantial, long lasting, plume-like spikes of flowers.

Salmon Queen—Exquisite shade of salmon-pink.
Moerheimi—Enormous spikes of pure white flowers.

Gladstone—15 to 18 inches. A great improvement upon the well-known *Astilbe Japonica*; produces lace-like spikes of pure white flowers.

Peach Blossom—Its graceful plumes of bright pink furnish a charming contrast to the other sorts offered.

Queen Alexandra—A beautiful *Astilbe* with soft, dainty pink flowers. Perfectly hardy.

Each, 50c; dozen, \$5.00.

ASTER (Michaelmas Daisy)

These should not be confused with the annual China Asters. They form symmetrical bushes of various heights and, during their blooming season, constitute one of the chief attractions of the garden or landscape.

Belgian Queen—Large, deep lavender flowers borne in long, pyramidal sprays on slender, graceful stems. Branching habit. 3 feet. September.

Blue Gem—Double flowers of rich blue. 3 feet.

Alpinus Superbus (Goliath)—12 inches. Large, showy purple flowers in May and June. Valuable for the border and for rockeries.

Feltham Blue—A pretty azure blue; 3 feet.

Louvain—Symmetrical bush-like habit. The foliage is completely hidden by masses of medium size, delicate pink flowers. 3 feet. Each, 50c; dozen, \$5.00.

N. A. Lil Fardel—Large, clear pink flowers. 4 feet. September-October. Each, 50c; dozen, \$5.00.

Novi Belgii Climax—One of the best and showiest, with large, pyramidal spikes of large, light lavender-blue flowers; very free flowering; 5 feet.

Nova Anglea (New England Aster)—4 feet. Bluish-purple; large flowers in masses.

Nova Anglea Rosea—4 feet. The showiest of all Hardy Asters. Rosy-pink flowers in late summer.

The Queen—The flowers are extra large and are borne in loose sprays on long, straight stems. They open pale mauve and turn nearly white with age. 4 feet. September. Each, 50c; dozen, \$5.00.

Robt. Parker—Large, soft, lavender-blue flowers, with yellow centers; extra fine. Height, 5½ feet.

St. Egwin—3 feet. A mass of large, delicate pink flowers in late summer.

Tartaricus—6 feet. A tall, late, dark blue.

ASCLEPIAS

Tuberosa (Butterfly Flower)—2 feet. Although occasionally found in fields and meadows throughout the United States, this is one of the most unique and showy of all hardy flowers. Thrives in all soils and produces numerous large, compact, flat heads of bright orange-yellow flowers—a color found in no other perennial. Each, 30c; dozen, \$3.00.



Hardy Perennials (Continued)

All varieties (unless otherwise noted), each, 20c; dozen, \$2.00; 100, \$14.00.

BAPTISIA (False Indigo)

Australis—3 feet. A stately species with large spikes of showy dark blue flowers.

BOCCONIA (Plume Poppy)

Cordata (*Japonica*) — 5 to 6 feet. A stately plant, with ornamental foliage, producing large terminal spikes of cream-colored flowers.

BOLTONIA

Asteroides—5 feet. Pure white flowers in great numbers, forming a cloud of bloom.

Latisquamaea — 5 feet. Shell-pink flowers with centers of golden yellow, resembling Hardy Asters. Very beautiful.

Latisquamaea Nana—Very much more dwarf and compact in growth than the above variety. We consider this the best of the Boltonias.

CAMPANULA (Harebell or Bell Flower)

Carpatica (*Carpathian Harebell*) — 9 inches. Dwarf-tufted habit. The deep blue flowers are borne on strong stems, in generous numbers throughout the summer.

Carpatica Alba (*White Carpathian Harebell*)—Identical with the above, except that the flowers are white.

Persicaefolia (*Peach-Leaved Harebell*) — 18 inches. Of erect habit; producing large, bright blue, bell-shaped flowers on slender, graceful stems.

Each, 25c; dozen, \$2.50.

CANTERBURY BELLS (*Campanula Media*)

An old favorite; also known as "Cup and Saucer." Grows 2 to 3 feet high, and blooms incessantly through July and August, with a profusion of bell-shaped flowers. Illustrated on page 16.

In Blue, Pink and White, also Mixed Colors.

CENTRANTHUS

Ruber (*Red Valerian, Juniper's Beard*)—2 feet. Of spreading habit, with numerous clusters of reddish-purple flowers. Blooms from June to October.

CENTAUREA (Hardheads)

Macrocephala—Bright golden yellow flowers; July and August. 3 feet.

Montana (*Perennial Cornflower*)—1½ to 2 feet. A very useful plant, of the easiest culture. During July, August and September produces large, violet-blue, fringe-like flowers.

Montana Alba—Large white flowers.

Each, 25c; dozen, \$2.50.



Special Offer Hardy Chrysanthemums

To introduce our splendid Hardy Chrysanthemums, we will send **\$2.00** twelve plants, each different, for

Hardy Chrysanthemums

Plucky Little Soldiers of the Garden

Strong plants, any variety, each, 25c; dozen, \$2.50; 100, \$15.00.

Files on parade—gallant on array—row upon row of those hardy little Chrysanthemums, a glorious burst of color that is a delight to the eyes. When the first blasts of the approaching forces of winter have driven others to shelter,

(See next page)

Hardy Perennials (Continued)

they stand guard over the garden. They do not attain the size of their regal relatives, but they more than compensate for this in their range of glorious colors, their hardiness and everblooming characteristics. But by disbudding a plant or two, many of the varieties will produce flowers of very appreciable size, if fed liberally with well rotted manure. The joy these plants will give in flowers for table, home decoration and garden, late in the year, will be a great treat to every flower lover.

Their culture is easiest. Plant them in any good soil, 2 feet apart. When the young shoots are 6 inches tall, pinch out the center of each stalk, and repeat this until the middle of August, when sturdy, bushy plants should have developed. A mulching of well decomposed cow manure will result in extra sized flowers in unusual quantities.



COREOPSIS

Model of Perfection (Pompon)—Vigorous, free blooming, white.

Mrs. W. H. Harrison (Pompon)—Early; wonderfully refined, loosely arranged, pale pink button.

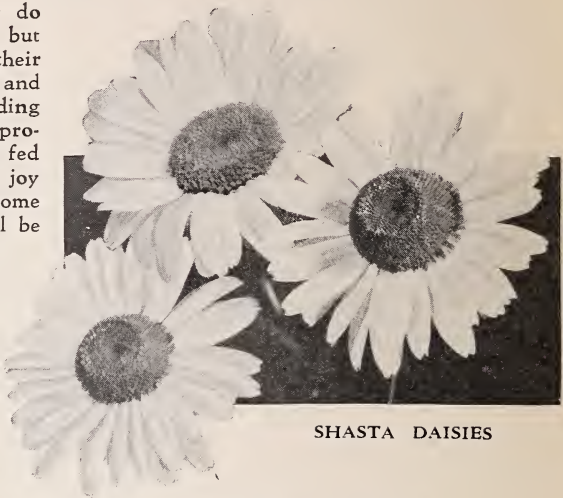
Oconto (Large Flowering)—A Japanese variety with white flowers on a strong, stiff stem. Early.

Provence (Aster Flowered)—Creamy pink, with lemon center.

Tints of Gold (Large Flowered)—The earliest bronze to bloom. An exceedingly fine sort.

White Doty (Large Flowered)—A pure milk-white. Mid-season.

White Midget (Pompon)—Late, pure white button.



SHASTA DAISIES

Descriptions of Chrysanthemums

All varieties, each, 25c; dozen, \$2.50; 100, \$16.00.

Angelo (Large Flowered)—A beautiful light pink.

Belle Mauve (Large Flowering)—Mauve in color; a first-class variety; blooms early and is very free blooming.

Bronze Beauty (Large or Aster Flowered)—Latest bronze. One of the very best.

Delmar (Pompon)—Rose-pink. Early; dwarf growing. A beautiful sort.

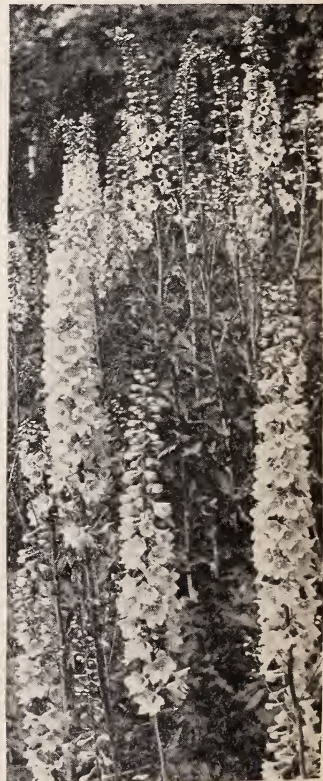
Excelsior (Large Flowering)—Bright yellow, hardy; one of the best varieties ever introduced.

Golden Climax (Pompon)—Orange-yellow; one of the finest of the many yellows, possessing every necessary qualification.

Juliana (Pompon)—Mid-season; large, yellow, button-like flowers.

Marie Dupont (Large Flowering)—One of the very best varieties producing white flowers.

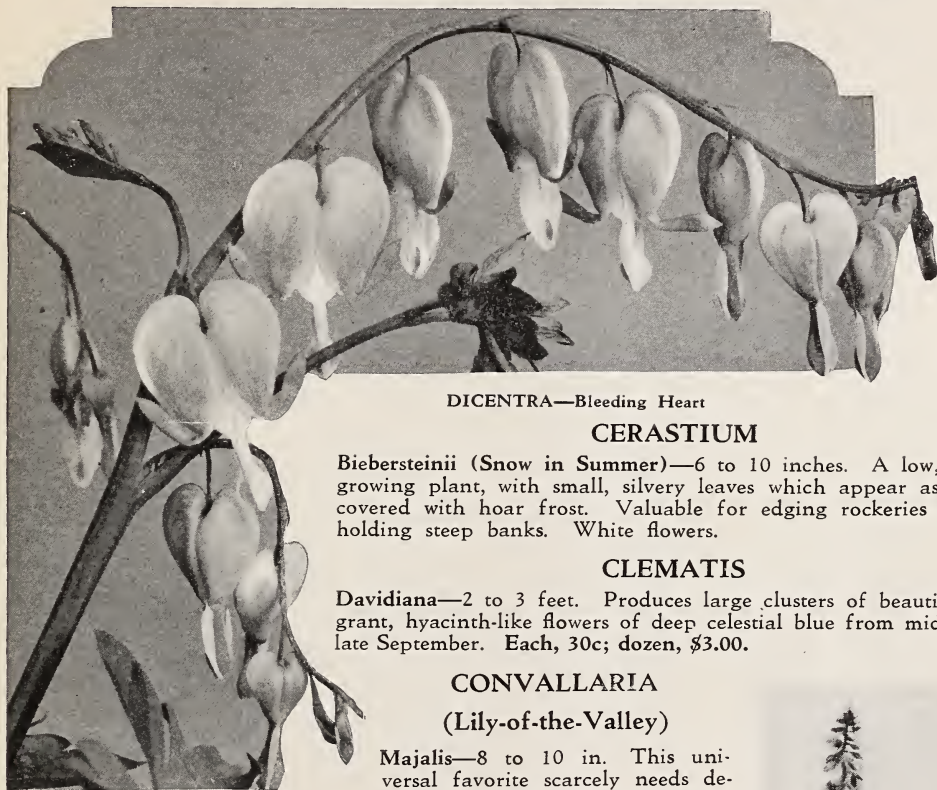
Mrs. Nellie Kleris (Large Flowering)—A fine, incurved, clear pink.



DELPHINIUM—Larkspur

Hardy Perennials (Continued)

All varieties (unless otherwise noted), each, 20c; dozen, \$2.00; 100, \$14.00.



DICENTRA—Bleeding Heart

CERASTIUM

Biebersteinii (Snow in Summer)—6 to 10 inches. A low, densely growing plant, with small, silvery leaves which appear as though covered with hoar frost. Valuable for edging rockeries and for holding steep banks. White flowers.

CLEMATIS

Davidiana—2 to 3 feet. Produces large clusters of beautiful, fragrant, hyacinth-like flowers of deep celestial blue from mid-July to late September. Each, 30c; dozen, \$3.00.

CONVALLARIA

(Lily-of-the-Valley)

Majalis—8 to 10 in. This universal favorite scarcely needs description. Succeeds best in partial shade, in rich soil with plenty of manure. We offer American-grown plants of the giant-flowered variety. Each, 15c; dozen, \$1.50; 100, \$10.00. Strong clumps, each, 30c; dozen, \$3.00; 100, \$22.00.

COREOPSIS

Lanceolata (Golden Wave)—2 to 3 ft. Unquestionably the best of all hardy yellow flowers for massing. Blooms constantly from June until frost, with large, daisy-like flowers on wiry stems.

DAISY (Hardy Daisy)

Shasta Daisy—9 to 12 inches. Luther Burbank's Hybrid Daisy. The flowers are of great substance, on long stems, with numerous petals, pure white with bright yellow centers.

Alaska—12 to 15 inches. An improvement upon the popular Shasta Daisy, with long, graceful, white petals.

California—12 to 15 inches. A pleasing light yellow.

King Edward VII—9 to 12 inches. Blooms late; white.

Market Favorite—12 to 15 inches. Late; white.

DELPHINIUM (Hardy Larkspur)

Among the showiest of hardy flowering plants, the tall hybrids lending themselves particularly well for a background, in contrast with Hardy Lilies.

New Vanderbilt Hybrids—It is with particular pleasure that we offer herewith some of these far famed new Hybrids. The Vanderbilt Hybrids surpass in great flowering qualities. The individual stalks, as well as the number of florets per stem and size of individual florets, are way ahead of any other strain of Delphiniums we know. Field-grown plants from the originator, each, \$1.00; dozen, \$10.00.



FOXGLOVE—*Digitalis*

Hardy Perennials (Continued)

DELPHINIUMS (Continued)

All varieties (unless otherwise noted), each, 20c; dozen, \$2.00; 100, \$14.00.

Belladonna—3 feet. Pure turquoise blue; a continuous, free bloomer from July until frost.

Bellamosa—3 to 4 feet. A true hybrid of Belladonna and Formosum, surpassing both parents. Color is dark blue.

Hybridum (English Larkspur)—3 to 5 feet. Justly celebrated, for they unite great size of flowers with beauty of color. Exquisite flowers in varied shades of blue.

Sinensis—18 inches. A very graceful, semi-dwarf variety, with intense gentian blue flowers in open panicles.

Sinensis Alba—18 inches. Flowers snow-white.

DICENTRA (Bleeding Heart)

Spectabilis—1½ to 2 feet. A highly thought of old favorite, producing freely in spring and early summer beautiful, heart-shaped flowers of pink and white. Illustrated on page 19. Each, 75c; dozen, \$7.50.

DIGITALIS (Foxglove)

Gloxiniaeflora—1½ to 2 feet. The funnel of each individual flower is attractively spotted. White, purple, pink and mixed colors.

ECHINOPS (Globe Thistle)

Ritro—Interesting and showy thistle-like plants, globular heads of deep metallic blue flowers. Attractive a long time when dried. 2 to 3 feet.

EUPATORIUM (Thoroughwort)

Ageratoides—3 to 4 feet. Produces in September a profusion of white, fuzzy flowers.

Coelestinum (Hardy Ageratum)—2 feet. An invaluable species, covered with rich blue flowers from early August to October. One of the best flowers for cutting, lasting a week or more.

Fraseri—A very pretty dwarf variety, producing clusters of snow-white flowers.



HIBISCUS



HEMEROCALLIS
Or Day Lily

ERYNGIUM (Sea Holly)

Amethystinum—3 to 5 feet. Unique and effective. The flower heads are a peculiar bluish metallic hue.

EUPHORBIA (Milkwort)

Polychroma—2 feet. A conspicuous object in early spring. Bushy, much branched, bearing a head of yellow bracts. April. Each, 30c; dozen, \$3.00.

FUNKIA (Plantain Lily)

Coerulea (Blue Day Lily)—18 to 24 inches. Lily-like flowers during July and August.

Lancifolia undulata variegata (Variegated Day Lily)—12 to 15 inches. Wavy foliage, beautifully variegated with white.

Sieboldiana—18 to 24 inches. Tall, white flowers with a pale lilac tinge.

GAILLARDIA (Blanket Flower)

Grandiflora—12 to 18 in. Flowers have red centers, with rings of crimson, maroon, orange or vermilion and are tipped with orange or lemon.

GALEUM

Boreale (Bedstraw)—3 feet. A graceful, airy plant, covered with white flowers in June and July.

GYPSOPHILA

Paniculata (Baby's Breath)—3 feet. A popular, old-fashioned perennial. Forms a compact, symmetrical bush, covered in August and September with loose panicles of small white flowers. Each, 20c; dozen, \$2.00.

Paniculata fl. pl. (Double Baby's Breath)—3 feet. A double form of the above. A rare perennial. Each, 50c; dozen, \$5.00.

HELENIUM (Sneezewort)

Autumnale Superbum—5 feet. A strong-growing plant, covered with branching heads of bright golden flowers in late summer.

Riverton Beauty—Pure lemon-yellow, with large disc of purplish-black.

Riverton Gem—2½ to 3 feet. One of the handsomest of the species; covered from August to October with flowers of old gold, suffused with terra cotta.

Each, 25c; dozen, \$2.50; 100, \$18.00.

Hardy Perennials (Continued)

All varieties (unless otherwise noted), each, 20c; dozen, \$2.00; 100, \$14.00.

HELIANTHEMUM (Rock or Sun Rose)

Croceum—6 inches. An evergreen plant of low habit; deep yellow flowers in late summer.

HARDY GRASSES

Eulalia Gracillima (Japan Rush)—6 feet. Graceful, tall, deep green, narrow foliage with white midrib.

Eulalia Japonica—5 to 6 feet. Broad, deep green leaves which curve gracefully downward. In autumn each tall stem carries a large, feathery tuft or plume.

Eulalia Japonica Variegata—4 to 5 feet. Leaves distinctly striped with white.

Eulalia Japonica Zebrina (Zebra Grass)—4 to 5 feet. A curious, variegated form with bands of yellow across the green leaves.

Eulalias, each, 25c; dozen, \$2.50; 100, \$18.00.

Pennisetum Japonicum (Hardy Fountain Grass)—4 feet. Has narrow, bright green leaves. Flower heads are shaded with bronzy-purple. Each, 25c; dozen, \$2.50.

Phalaris arundinacea picta (Ribbon Grass)—1 foot. Green, variegated with white stripes. Each, 20c; dozen, \$2.00.

Japanese Iris (Mixed)—Some time ago, a specialist and hybridizer offered us his surplus of unnamed seedlings—some so unique and beautiful as to be well worth naming and offering separately. To these we added other good varieties of which the labels had become lost in the nursery. The entire lot is offered to you in this mixture—a truly superb combination of the finest blood. These mixed Japanese Iris should not be confused with the usual or ordinary Japanese Iris that are sent out. Splendid strong, roots, each, 20c; dozen, \$2.00; 100, \$14.00.

HELIANTHUS (Hardy Sunflower)

Maximiliana—5 to 7 feet. Large, decorative flowers of clear yellow. October up to frost.

Miss Mellish—6 feet. Bright yellow flowers in profusion during September and October.

Mollis (Downy Sunflower)—3 to 4 feet. Silvery foliage; single yellow flowers.

Multiflorus Grandiplenus (Soleil d'Or)—3 to 4 feet. The best of the double Sunflowers.

HELIOPSIS (Orange Sunflower)

Pitcheriana—2 to 3 feet. The flowers are deep golden yellow, of leathery texture, and freely produced throughout the summer. Each, 20c; dozen, \$2.00; 100, \$14.00.

Scabra Excelsa—Double flowers of rich chrome-yellow. A new and valuable variety. Each, 25c; dozen, \$2.50.

AN IDEAL COMBINATION OF TWO CHARMING PERENNIALS

Lily-of-the-Valley, with its chaste, fragrant bells of purest white; Gov. Herrick Violet, dark purple flowers of great size and fragrance. Both prefer partial shade and, when intermingled, make a lovely picture. We will supply 12 clumps of Lily-of-the-Valley and 12 strong plants of the Violet, for \$4.00.



HOLLYHOCK
A Favorite for Garden
or Screen



JAPANESE IRIS

Hardy Perennials (Continued)

All varieties (unless otherwise noted), each, 20c; dozen, \$2.00; 100, \$14.00.

HEMEROCALLIS (Day Lily)

Dumortieri (Golden Day Lily)—20 inches. Showy and effective; flowers bright orange.

Flava (Lemon Lily)—2½ to 3 feet. Flowers large, fragrant, wax-like, lemon-yellow.

Florham—3 to 3½ feet. Has large, sweet scented, golden flowers in June and July.

Gold Dust—2½ feet. Bright yellow, tinged with red, the reverse of petals and buds bronzy yellow.

Kwanso (Double Day Lily)—3 feet. Large, double flowers of rich coppery yellow.

IRIS

The Rainbow Flower



BORDER OF GERMAN IRIS

HEMEROCALLIS (Day Lily)

Orangeman—2 to 3 feet. Large, orange-yellow flowers.

Thunbergi (Japanese Lemon Lily)—3 to 4 feet. Blooms later than the others—in September. The fragrant flowers are bright yellow.

HESPERIS

Matronalis (Sweet Rocket)—2 feet. Flowers of this variety are quite fragrant at night, though in the daytime there appears to be no fragrance whatever. This variety is frequently used in plantings of wild flowers. White and pink flowers. May and June.

HEUCHERA (Alum Root)

Sanguinea (Coral Bells)—18 inches. Ornamental in foliage and beautiful in flower. The blossoms are of a brilliant coral. Each, 35c; dozen, \$3.50; 100, \$25.00.

HIBISCUS (Mallow)

Meehan's Mallow Marvels—6 to 8 feet. The large flowers (eight to ten inches in diameter) appear early in August and continue until frost. Fiery crimson, blood-red, pink and white. Mixed colors, each, 25c; dozen, \$2.50; 100, \$17.50.

Selected Blood-red, also Pink, extra strong roots of either color, each, 40c; dozen, \$4.00.

Militaris (Halbert-Leaved Mallow)—4 to 5 feet. A spreading bush thickly studded with exquisitely formed flowers, three to five inches in diameter, ivory white or pale blush. Begins to flower in July.

Moscheutos (Marsh-mallow)—3 to 5 feet. Strong growing bushy plants, with large leaves and large, bell-shaped flowers during late summer and autumn. **Alba**, pure white; **Crimson Eye**, white with large spot of rich crimson at the center; **Rosea**, clear bright pink. Price, except as noted, each, 20c; dozen, \$2.00; 100, \$14.00.

LOVETT'S SUPERB HOLLYHOCKS

Double Hollyhocks—Not only are the flowers very large and wonderfully perfect in makeup, but they are produced in far greater numbers and for a much longer season than the old-

Hardy Perennials (Continued)

All varieties (unless otherwise noted), each, 20c; dozen, \$2.00; 100, \$14.00.

fashioned Hollyhocks. We grow them in separate colors, namely, Maroon, Pink, Red, Salmon, White and Yellow. Extra selected field-grown roots, each, 20c; dozen, \$2.00; 100, \$14.00.

Double Hollyhocks, Mixed Colors, strong roots, each, 15c; dozen, \$1.50; 100, \$10.00.

Single Hollyhocks—The "old-fashioned Hollyhocks," much improved in size, and purity of color. All colors mixed, strong field-grown roots, each, 15c; dozen, \$1.50; 100, \$10.00.

IBERIS (Candytuft)

Sempervirens—8 to 10 inches. A low-growing plant with evergreen foliage, completely covered in spring with clusters of pure white flowers. Especially valuable for borders and rock gardens.

Gibraltarica—10 to 12 inches. In several respects, an improvement upon *Sempervirens*, with a larger head of bloom and the individual flowers larger than those of *Sempervirens*.

Snowflake—8 to 10 inches. A greatly improved variety. Its pure white flowers are larger than other varieties and appear in lavish masses during May and June.

IMPERIAL JAPANESE IRIS (*Iris Kaempferi*)

These differ from the commonly grown, and better known, German Irises offered below in that they carry their flowers on top of their stately stems. The individual flowers are of truly enormous size (6 to 8 inches in diameter) and of the most gorgeous and richly varied colors imaginable. Blooming season, June-July.

Double White (Gold Bound)—Six large, open milk-white petals, deep yellow at base.



GERMAN IRIS

Peacock—Nine large, overlapping petals; violet purple, veined with white.

Pyramid—Nine large petals, indigo blue, veined with white.

Stella—Three violet petals, veined white.

Strong roots, each, 40c; dozen, \$4.00; 100, \$30.00.

IRIS PUMILA HYBRIDS

Of the same general physical make-up as the German (*Liberty*) Iris, but of rather compact growth and among the very first to bloom. With us, they have graced the rock garden—together with Grape Hyacinths and Snowdrops—fully 5 weeks ahead of the other Iris.

The following Hybrids were produced by Dr. Van Fleet, the celebrated plant hybridizer. They are very strong growers (8 inches) and bloom very freely.

Canary Bird—Produces, as do all these Hybrids, an almost solid mass of color, the flowers of this variety being a bright canary yellow.

Sea Gull—The flowers are the same gray, but not a cold gray, that one sees frequently in a winter sky. It is also the color of the plumage of a sea gull.

Gold Finch—Creamy-white with a very faint bluish cast.

Blue Jay—Produces flowers of a cheerful bright blue which, contrasted with the lighter colored blooms of the other three sorts, give a most striking and beautiful effect.

Each, 30c; dozen, \$3.00.

Iris Pumila, Mixed—The colors range through the various shades of blue and yellow. Many show bloom early in May.

Each, 20c; dozen, \$2.00.

GERMAN OR LIBERTY IRIS (*Iris Germanica* or *Fleur de Lis*)

A Cultural Hint—Most planters set Iris roots too deeply. They should be so placed that the neck of the root is just level with the surface of the ground. The upright petals are termed "stands," the drooping ones, "falls."

VARIETIES OF UNUSUAL MERIT

Florentina Alba (*Silver Queen*)—Stands and falls porcelain, shading to pure white; flowers large; blooms very early; fragrant.

Iris King—Stands, clear lemon-yellow; falls, rich maroon, bordered with yellow. Flowers very large and exceedingly brilliant in color.

Pallida Dalmatica (*True*)—Stands, tender lavender; falls, deeper lavender with shadings of soft blue. Flowers very large and fragrant. Tall habit.

Purple Queen (*Florentine Blue*)—Stands and falls, rich violet-purple. Flowers very large, the earliest of all.

Each, 25c; dozen, \$2.50.

STANDARD SORTS

Abd-El-Kadir (*Victoria*)—Stands, smoked-yellow; falls, yellow, veined purple-plum.

Brooklyn—Stands, porcelain; falls, light blue, veined with russet shading to light blue.

Chas. Dickens (*Orova*)—Stands, light violet; falls, indigo with white at base.

Hardy Perennials (Continued)

All varieties (unless otherwise noted), each, 20c; dozen, \$2.00; 100, \$14.00.

GERMAN OR LIBERTY IRIS

Charlotte Patti (Brilliant)—Stands, golden; falls, light yellow, veined mahogany. Semi-dwarf.

Darius—Stands, lemon-yellow; falls, light yellow, blotched and marbled with rosy lilac.

Delicata—Stands, delicate straw, tinted with rose; falls, deep lilac, shading to white.

Donna Maria (Edith Cook)—Stands, azure; falls, indigo, white base veined with indigo.

Gracchus—Stands, lemon; falls, delicate yellow, striped wine red.

H. Cramer—Stands, deep celestial blue; falls, pure Yale blue; tall habit; blooms early.

La Tendre (Bridesmaid, Edina)—Stands, porcelain; falls, light blue, veined violet.

Leopold—Stands, smoked lavender; falls, light purple, shading to white at base.

Lizzie—Deep lemon-yellow stands. Falls, velvety crimson.

Pauline—Stands, bright blue; falls, darker.

Pres. Thiers—Stands, mauve, brown at base; falls, purple, base marked brown and white.

Queen of May (Rosy Gem)—Stands, bright rosy-lilac; falls, a shade darker. Showy.

Rebecca (Honorabilis. Sans Souci)—Stands, golden-yellow; falls, mahogany brown.

Sir Robert Peel (Zephyr)—Stands, light, and falls dark blue.

All above, each, 15c; dozen, \$1.50; 100, \$10.00.

Varieties Mixed, each, 12c; dozen, \$1.25; 100, \$7.50.

IRIS PSEUDO ACORUS

Water Flag—2 to 3 feet. Of tall habit. Produces golden yellow flowers in June. Prefers a moist or wet situation. Each, 25c; dozen, \$2.50; 100, \$15.00.

SIBERIAN IRIS (Iris Sibirica)

Flowers similar in form to those of the Liberty Iris. While smaller, they are of more graceful shape and of more intense coloring. Excellent for cutting.

Blue King—Clear, rich blue.

Orientalis—Rich violet blue.

Snow Queen—Pure milk white.

Each, 20c; dozen, \$2.00; 100, \$14.00.

LIATRIS (Blazing Star)

Pycnostachya (Kansas Gay Feather)—4 to 5 feet. Handsome and very showy; pale purple flowers in tall, round, dense spikes. Prefers a dry soil.

LATHYRUS (Perennial Pea)

Latifolius (Everlasting Pea)—A climbing plant, valuable for covering trellises, stumps of trees, etc. Flowers are deep rosy-red.

Mary Lovett (Pink Beauty)—A variety of great beauty that originated at Lovett's Nursery. The flowers are soft, rosy-carmine.

White Pearl—A snow-white variety, with flowers much larger than those of the old white sort. They are produced in large trusses from early July until September.

LOBELIA

Cardinalis (Cardinal Flower)—1½ to 2 feet. Startling in the brilliancy of its bloom. Flowers, cardinal red, are borne in dense spikes in autumn.

LILIUM (Lily)

Among the statelyst of all hardy plants, Lilies, during their respective flowering seasons, constitute the chief attraction in the hardy border. Because they last for years, occupying the same situation, it is well to carefully prepare the bed where they are to be planted. They prefer a well-drained soil. Equal parts of good soil, sand and leaf mold furnish the right material for a good Lily bed.

For some reason, the impression seems to prevail among many home gardeners that Lilies are difficult to grow. Far from it! The varieties we offer not only endure our winters perfectly, without protection (except *L. auratum*), but they actually naturalize themselves and become part of the perpetual garden scheme. By planting a few of every variety we offer, at least eight weeks of Lily flowering season may be enjoyed.

LILIUM AURATUM

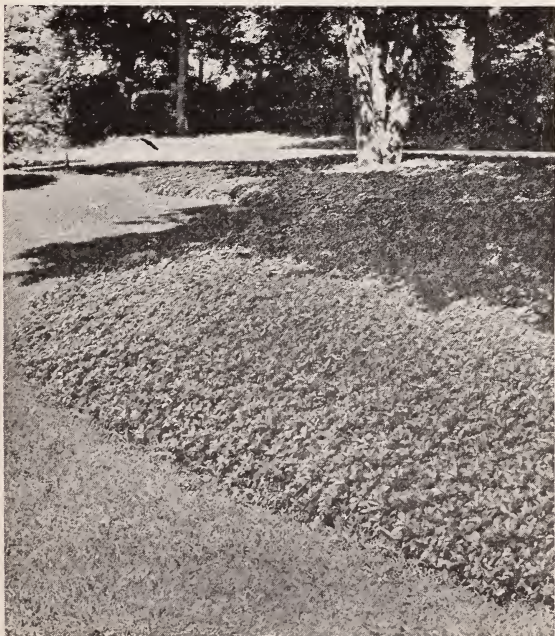
Golden-Banded Lily—Immense, bell-shaped flowers, ivory white, thickly marked with chocolate dots, and with a stripe of bright yellow through the center of each petal. Very fragrant. Should be given some protection in northern latitudes.

Large bulbs, each, 40c; dozen, \$4.00.

SPECIOSUM LILIES

The most popular of all Lilies for outdoor culture. Fragrant. All are hardy.

Henry—Of the same form and general appearance as the Speciosum Lilies, but with



PACHYSANDRA TERMINALIS
A Wonderful Ground Cover for Shady Places

Hardy Perennials

(Continued)

All Perennials (unless otherwise noted), each, 20c; dozen, \$2.00; 100, \$14.00

flowers of a bright orange-yellow. Has proved of extraordinary hardiness and readily acclimates in any well-drained soil. Each, 50c; dozen, \$5.00.

Magnificum—Comparatively new sort; an improvement on *Rubrum*, larger, brighter. Large bulbs, each, 40c; dozen, \$4.00.

Melpomene—Words fail to describe the beauty of this variety. The flowers are frosted white, spotted, clouded, bordered with pinkish-crimson. Petals incurved. Large bulbs, each, 40c; dozen, \$4.00.

Rubrum—Very much like *S. album*, except that the white, waxy, recurved petals are shaded and spotted with rosy carmine. Large bulbs, each, 40c; dozen, \$4.00.

Album—White with faint dots, and a light green band through the center of each petal. Large bulbs, each, 50c; dozen, \$5.00.

LUPINUS (Lupine)

Moerheimii—Soft rose. June.

Polyphyllus—3 feet. Large, flowering spikes of pea-shaped, deep blue flowers; June until September.

Polyphyllus Album—White flowers.



JAPANESE LILY—*Lilium Auratum*

LYCHNIS (Campion)

Chalcedonica (Maltese Cross)—3 feet. A fine old sort with close heads of brilliant scarlet.

Flos-Cuculi (Ragged Robin)—Loose clusters of red or pink fringed flowers. 1 to 2 feet.

Viscaria fl. pl. (Double Red Lychnis)—18 inches. A magnificent variety with thickly tufted evergreen foliage, which turns to brilliant colors in autumn. The flowers are in tall spikes; of pure rosy-red color and pleasantly fragrant.

LYSIMACHIA

Clethroides (Loosestrife)—18 inches. Flowers pure white, in long, dense spikes. July till September.

LYTHRUM

Roseum Superbum (Rose Loosestrife)—3 to 4 feet. Literally covered, in July and August, with spikes of rosy-purple flowers.

MONARDA (Bergamot)

Didyma Splendens (Oswego Tea or Bee Balm)—2 to 3 feet. Large heads of intensely rich crimson-scarlet flowers.

MYOSOTIS (Forget-Me-Not)

Palustris Semperflorens—4 to 8 inches. A lovely little plant; especially valuable for rocky or moist situations. Small, pale blue flowers.



PEONY—*Edulis Superba*

Hardy Perennials (Continued)

All varieties (unless otherwise noted), each, 20c; dozen, \$2.00; 100, \$14.00.

OENOTHERA (Evening Primrose)

Pilgrimi—12 inches. Bears large clusters of yellow flowers. Splendid for rockery.

PACHYSANDRA (Japanese Spurge)

Terminalis—6 to 9 inches. Especially valuable as a ground cover plant, under trees and other shady places. Evergreen foliage, accompanied by white flowers during May-June. Each, 25c; dozen, \$2.50; 100, \$17.50; 1000, \$150.00. See page 24.

CHOICE DOUBLE PEONIES

All varieties of Peonies (except where noted otherwise), each, 75c; dozen, \$7.50.

Achille—A very floriferous, mid-season variety which produces extra large, five-inch blooms in clusters on three-foot stems. The individual blooms, which are light shell-pink, resemble immense carnations.

Agida—A bright red, mid-season variety which produces very attractive, semi-double blooms.

Albert Crousse—One of the latest to flower. Produces very large, somewhat flat, compact, bomb type, rose-white, fragrant flowers, sometimes flecked with crimson. A strong growing, free blooming variety. Each, \$1.00; dozen, \$10.00.

August d'Hour—Produces brilliant rose-red, very large flowers extra early in the season.

Couronne d'Or (Crown of Gold)—Snow white,

golden stamens. Large, full flower of superb form. Free bloomer. Each, \$1.00; dozen, \$10.00.

Duchess de Nemours—Pure white crown, sulphur-white collar. Early, free-flowering, fragrant.

Edulis Superba—Bright rosy pink. Fragrant. One of the earliest to bloom.

Felix Crousse—Among the finest of all double reds. Dazzling crimson. Each, \$1.00; dozen, \$10.00.

Festiva Maxima—Pure white, with dashes of blood-red at center. Early. One of the finest of all varieties.

(See page 27 for other varieties of Peonies)

Six Magnificent Peonies

Including the Wonderful Karl
Rosefield

- | | |
|------------------|------------------|
| 1—Mme. Lemoine | 4—Felix Crousse |
| 2—Couronne d'Or | 5—Mad. Ducel |
| 3—Edulis Superba | 6—Karl Rosefield |

White, Pink and Deep Crimson. All splendid, vigorous plants. Regular value \$7.00.

Special Price \$5.50

SPECIAL OFFER

One each of the 20 varieties of Peonies offered in this catalog for \$15.00. This is indeed a bargain offer.



A SUPERB PEONY PLANTING

Hardy Perennials (Continued)

All Perennials (unless otherwise noted), each, 20c; dozen, \$2.00; 100, \$14.00.

PEONIES (Concluded)

Floral Treasure—A strong, tall, upright grower, producing pale lilac-rose, fragrant flowers in great abundance. Splendid for cutting. Each, \$1.00; dozen, \$10.00.

Grandiflora Nivea Plena—One of the earliest to bloom. Produces good sized flowers, creamy-white, intermingled when first opening with delicately shaded salmon. Very fragrant; not a tall grower. Each, \$1.00; dozen, \$10.00.

Golden Harvest—Medium size with guard petals pale lilac-rose and center peach-blossom pink. A dwarf growing, very free blooming mid-season variety. Each, \$1.00; dozen, \$10.00.

Karl Rosefield—Very large, globular, compact, semi-rose type. Dark crimson. Very strong, tall, compact grower and free bloomer. Mid-season. A very brilliant and striking variety. Each, \$1.50; dozen, \$15.00.

Madam Ducl—Light mauve-rose with silvery reflex. A strong, but not a tall grower. Fragrant. Each, \$1.00; dozen, \$10.00.

L'Eclatarite—Very large, compact bloom. Brilliant red. Each, \$1.00; dozen, \$10.00.

Madame Lemoine—Guards light violet-rose, collar milk-white, crown lilac-white. Fragrant. Strong, erect, tall, free bloomer. Mid-season. Extra fine. Each, \$1.50; dozen, \$15.00.

Madame Moutot—Tyrian rose, tipped silver.

Madame de Verneville—Large, very full. Pure white, center blush, carmine flecks. Fragrant.

Modeste Guerin—Light solferino-red; fragrant. A mid-season variety of medium height, and a very free bloomer.

Rachel—A splendid red-flowered sort of medium height, and a most profuse bloomer. Each, \$1.00; dozen, \$10.00.

PARDANTHUS

Sinensis (Blackberry Lily)—3 to 4 feet. Bears lily-like flowers of rich orange-yellow, thickly spotted with dark crimson and brown.

PENSTEMON (Beard Tongue)

Barbatus Torreyi—3 to 4 feet. Spikes of bright scarlet flowers in June and July.

Digitalis—2 to 3 feet. Long white flowers, with purple throats, in large spikes.

HARDY PHLOX

The glory of the summer garden; shows up best when planted in masses; plant 12 to 18 inches apart.

Athis—Deep, clear salmon.

B. Compte—Brilliant, rich French purple.

Bridesmaid—Pure white with crimson eyes.

Caren d'Ache—Red; exceedingly fine.

Champs Elysee—Fine, rich purple.

Eclairneur—Bright rose-carmine.

Elizabeth Campbell—Bright salmon-pink, with lighter shadings and dark red eye. Each, 50c; dozen, \$5.00.

Europa—White, large crimson-carmine eye.

Fred Cortez—Deep crimson, overlaid coppery.



A Planting of Phlox

F. G. Van Lassburg—Largest, pure white.

H. O. Wijers—Flowers bright pink center, white edges, low growing.

Iris—Light purple.

Mad. Paul Dutrie—Soft pink, suffused with white.

Mrs. Chas. Dorr—Beautiful shade of lavender.

Mrs. Jenkins—Best pure white, large trusses.

(Other varieties offered on next page)



HARDY PHLOX

Hardy Perennials (Continued)

All varieties (unless otherwise noted), each, 20c; dozen, \$2.00; 100, \$14.00.



ORIENTAL POPPY—*Papaver orientale*
A Blazing Spot of Color in the Garden

HARDY PHLOX (Concluded)

Miss Lingard—Long spikes of white flowers, with faint lavender eye. Early.

Lothair—Salmon-red, dark carmine eye; tall, strong grower.

Independence—Large and early flowering, white, compact truss.

Peachblow—Delicate rose pink. Fine foliage and beautiful flowers.

Widar—Light reddish-violet, large white center intensifies and illuminates the color.

Queen—Very tall growing. Pure white.

Rhineland—Soft salmon-pink, deep red eye. Large size.

Rhynstrom—Bright rose-pink.

Thor—Deep salmon-pink, with scarlet eye.

Each, 20c, dozen, \$2.00; 100, \$14.00
(except as noted)

PHLOX SUBULATA (Moss or Mountain Pink)

Of very dwarf habit. Thrives everywhere. Alba, pure white; Lilacena, lavender; Rosea, rosy pink.

PHYSOSTEGIA

Virginica (Dragon Head)—3 to 4 feet. Shell-pink flowers from June until frost.

Virginica Alba—3 feet. Pure white flowers.

PHYSALIS (Chinese Lantern Plant)

Franchetti—Grows about 2 feet high, bearing bright orange-scarlet, lantern-like fruits.

HARDY PINKS (*Dianthus*)

Abbotsford—Carmine-pink; large.

Arthur—White, with dark maroon center.

Essex Witch—Pure bright pink.

Her Majesty—Large size, white, fragrant.

White Reserve—Pure white, everblooming.

Plumarius Nanus fl. pl. (Early Flowering Pink)—Flowers two weeks earlier than the old types. Very fragrant; rich colors.

PLATYCODON (Bell Flower)

Mariesi—18 inches. Semi-dwarf habit. Star-like flowers of intense dark blue, all summer.

Mariesi Alba—18 inches. Flowers are white.

PLUMBAGO (Leadwort)

Larpentae—6 inches. A dwarf, spreading plant, bearing pretty, deep blue flowers.

The Three Hardy "Grenadin" Pinks

These differ from the other hardy Pinks in that they bear their carnation-like flowers on longer stems, which causes them to be ideal for cutting. Perfectly hardy and with delightful fragrance. We offer Grenadin White, Grenadin Pink and Grenadin Red. Each, 30c; dozen, \$3.00; 100, \$20.00.



PYRETHRUM HYBRIDUM

Hardy Perennials (Continued)

All varieties (unless otherwise noted), each, 20c; dozen, \$2.00; 100, \$14.00.



LILY OF THE VALLEY—*Convallaria majalis*

GORGEOUS ORIENTAL POPPIES

Papaver Orientale—Flowers are five to seven inches across, and freely produced during May and June, on tall stems. Intense crimson with a large spot as black as night in the center. Illustrated on page 28.

ICELAND POPPIES

Papaver Nudicaule—Great numbers of flowers on slender stems a foot long. The flowers vary from white to orange.

PRIMULA (Primrose)

Veris—15 inches. Flowers are bright canary yellow.
Vulgaris (English Primrose)—6 to 9 inches. Bright lemon-yellow and maroon.

PYRETHRUM

Roseum Hybridum (Painted Daisies)—12 to 18 inches. Unsurpassed for refined beauty and attractive foliage. They are truly "Colored Marguerites."
Uliginosum (Giant Daisy)—3 to 4 feet. Pure white flowers, with yellow centers, in great masses in autumn. Each, 25c; dozen, \$2.50.

RANUNCULUS (Buttercup)

Acris fl. pl. (Hardy Double Buttercup)—Masses of bright golden-yellow flowers in May and June. 18 in.

RUDBECKIA (Coneflower)

Laciniata fl. pl. (Golden Glow)—5 to 6 feet. Tall, with double golden-yellow flowers. Excellent as a cut flower.

Nitida Hirsuta—A valuable variety, producing a great abundance of large, single, bright golden-yellow flowers with long, waving petals. 6 feet.

Purpurea (Giant Purple Coneflower)—2 to 3 feet. Reddish-purple flowers about 4 inches across.

Sub-Tomentosa (Black-Eyed Susan)—3 feet. Lemon-yellow flowers, purplish centers.

SALVIA (Sage)

Azorea (California Blue Sage)—3 to 4 feet. Charming blue panicles during August and September.

Pitcheri—Rich gentian-blue flowers.

SANTOLINA (Lavender Cotton)

Incana—6 to 9 inches. Evergreen and very hardy.

SCABIOSA (Mourning Bride)

Caucasica—Soft, lavender-blue flowers. Each, 25c; dozen, \$2.50.



VIOLA JERSEY GEM

Hardy Perennials (Continued)

All varieties (unless otherwise noted), each, 20c; dozen, \$2.00; 100, \$14.00.



SWEET WILLIAM

SCUTELLARIA (Skull Cap)

Baicalensis Coelestina—Bound to enjoy great popularity when better known. One of the few plants that will flower from early June until late August. The flowers, which are borne freely on thin, wiry stems, are clear blue in color and resemble in shape those of a Snapdragon. 1-1½ ft. Each, 30c; dozen, \$3.00.

SEDUM (Stonecrop)

Acre (Golden Moss or Wall Pepper)—4 inches. *Album*—Exceedingly vigorous grower. *Sarmentosum*—A pretty trailing variety. Yellow flowers during July. *Sieboldi*—5 inches. The rarest of the family, with erect, bluish-green foliage. Each leaf is edged pink. Pink flowers in clusters. *Spectabilis* "Brilliant"—An improved variety of a showy red hue.

SPIRAEA (Meadow Sweet)

Arunca (Goat's Beard)—3 to 5 feet. Creamy-white flowers. *Palmata* (Crimson Meadow Sweet)—3 feet. Crimson-purple flowers on purple stems. *Palmata Elegans*—Silvery-pink flowers. *Ulmaria* Var—With bright yellow midribs. Each, 25c; dozen, \$2.50.

STATICE

Latifolia (Sea Lavender)—12 to 18 inches. Large heads of small lavender-blue flowers.

STOKESIA (Cornflower Aster)

Cyanea—18 to 24 inches. July-October. Blue. Delicate lavender-blue flowers. *Cyanea Alba*—The white form of above.

SWEET WILLIAM (London Tufts)

*Dianthus Barbatu*s

We can supply them in separate colors, viz.: Pink, Red and White, also Mixed Colors.

STACHYS

Lanata—Fine, dwarf rock garden plant with silvery foliage.

TRITOMA (Red Hot Poker Plant)

Pfitzeri—Blooms freely, from August to October,

with spikes 3 to 4 feet high of a rich orange-scarlet. Hardy with protection. Each, 25c; dozen, \$2.50.

New Hybrid Tritomas—Stout stems, with large heads of rich, vivid orange-scarlet. 3-4 feet.

VALERIANA

Officinalis (Hardy Garden Heliotrope) *St. George's Herb*)—2 to 3 feet. Large umbels of small, pink, fragrant flowers.

VERONICA—Speedwell

Amethystina—Amethyst-blue flowers. *Longifolia Subsessilis* (Blue Jay Flower)—2 to 2½ feet. Blue spikes a foot long. *Spicata*—1 to 2 feet. Deep blue flowers. Each, 25c; dozen, \$2.50; 100, \$17.50.

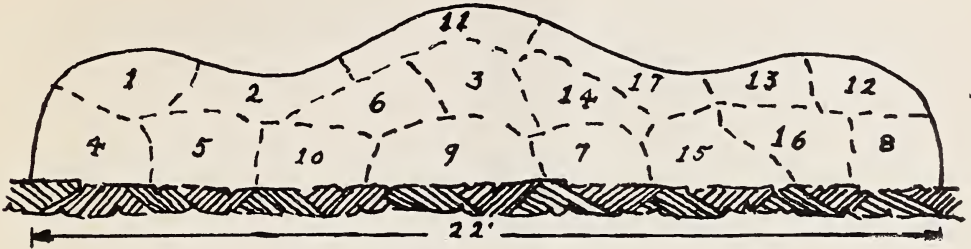
VIOLA (Violet)

Gov. Herrick—Undoubtedly the best of the single flowered varieties for growing out-of-doors. *Cornuta* (Tufted Pansy)—Most free flowering dwarf border plant, blooming uninterruptedly from May until October. Various colors. Similar in appearance to miniature Pansies.

JERSEY GEM—Undoubtedly the most valuable bedding Viola yet introduced which is perfectly suited to our climatic conditions, and which will succeed in any good garden soil in a sunny position, blooming practically without a break from May to the end of the season. The plant is of compact, sturdy habit of growth, its flowers pure violet, without the slightest shading and borne on good stems about six inches long, making it a splendid subject for cutting as well as a most desirable plant for the border. Each, 25c; dozen, \$2.50; 100, \$17.50. Illustrated in color on page 29.



TRITOMA—A Striking Perennial Plant



BORDERED BY SHRUBS OR HEDGE

Border A—51 Sturdy Plants —bound to bloom—3 each of 17 distinctly worth-while classes, for **\$5.00**

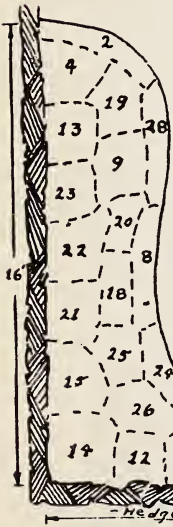
Key Numbers

- 1 Achillea "Boule de Neige"—splendid for cutting
- 2 Alyssum saxatile—"Basket of Gold"
- 3 Columbine—long-spurred Hybrids
- 4 Coreopsis lanceolata—the brightest yellow garden flower
- 5 Chrysanthemums—hardy outdoor varieties
- 6 Daisy, Shasta—most popular for cutting
- 7 Delphinium or perennial Larkspur—blue shades

Key Numbers

- 8 Hemerocallis or Yellow Day Lilies
- 9 Hollyhocks, double—mixed colors
- 10 Heliopsis—an early form of hardy Sunflower
- 11 Iberis or Hardy Candytuft—best for edging
- 12 Phlox subulata—dwarf, for edging
- 13 Iris pumila—a dwarf form
- 14 Lysimachia—the attractive Loosestrife
- 15 Phlox—tall, hardy kinds
- 16 Iris—Germanica, or Liberty Iris
- 17 Pinks—hardy clove, or spice, pinks

Border B—101 Sturdy Plants —a regular retail value of over \$20.00 for only **\$10.00**



Key Quan.

- 1 3 Aster—Nova anglea rosea
- 2 4 Alyssum saxatile compactum—Basket of Gold
- 3 4 Astilbe—Queen Alexandra
- 4 3 Campanula persicaefolia
- 5 3 Chrysanthemum—Golden flower
- 6 3 Chrysanthemum—Pink flower
- 7 3 Delphinium—Belladonna—Larkspur
- 8 5 Daisy—Alaska
- 9 4 Gaillardia grandiflora Blanket flower
- 10 5 German Iris—Choice assortment
- 11 5 Hardy Pinks—Assorted

Key Quan.

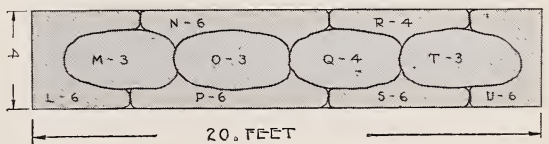
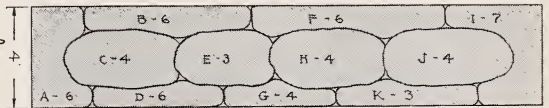
- 12 2 Helianthus multiflorus—Hardy double Sunflower
- 13 3 Hemerocallis Kwanso—Double Orange Day Lily
- 14 2 Hibiscus—Rose Mallow
- 15 4 Hollyhocks—Double mixed
- 16 6 Jap. Iris—Choice mixture
- 17 3 Lilium—Melpomene—Hardy Pink Lily
- 18 3 Lupinus Polyphyllus—Blue Lupine
- 19 5 Lysimachia—Loosestrife
- 20 3 Poppies—Oriental
- 21 5 Peonies—Double mixed
- 22 3 Phlox—Scarlet
- 23 3 Phlox—Pure white
- 24 5 Pumila Iris—Splendid mixture
- 25 3 Pyrethrum—Painted daisy
- 26 2 Salvia azurea—Blue Salvia
- 27 3 Stokesia—Cornflower Aster
- 28 4 Aquilegia—Mrs. Scott Elliott's Columbine

Planting C—Center Entrance

Key to Planting C

- A—6 Pinks (Dianthus)
- B—6 Arabis
- C—4 German Iris—Purple
- D—6 Candytuft
- E—3 Achillea
- F—6 Larkspur
- G—4 Veronica
- H—4 Columbine
- I—7 Sweet William
- J—4 German Iris—Yellow
- K—3 Grenadin Pinks
- L—6 Blanket Flower
- M—3 German Iris—Lavender
- N—6 Dwarf Phlox
- O—3 Coreopsis
- P—6 Pyrethrum
- Q—4 Japan Iris
- R—4 Alyssum
- S—6 Primrose
- T—3 German Iris—Blue
- U—6 Shasta Daisy

100 Sturdy Plants, Blooming Age, for **\$10.00**



CENTER ENTRANCE PLANTING

20. FEET

Choice Deciduous and and Dwarf

MUCH of the beauty of the home depends upon mental shrubs and trees. The wide range of opportunity for a variety of planting schemes, and planting can be achieved.

We have purposely omitted many varieties and of strong, rugged habit to reduce their care to a listed, and will appreciate your inquiries with refer

The prices quoted are for well-developed, stocky times the price of one (six for five times the price of more of one variety are taken. The hundred rate solicit an opportunity to give special quotations upon planting. Shipment can be made by express or fr



LILAC—Purple
Height When Full Grown, 6 - 8 Ft.
Blooms in May

50th Anniversary

Twelve Shrubs That Will Provide a

Here are twelve shrubs, all sturdy, vigorous masses of colorful blooms throughout the specialties illustrated on this page, 2 to 3 feet—r

TWELVE SHRUBS Special P



SPIRAEA VAN HOUTTEI
Height When Full Grown, 4-5 Ft.
Blooms in May - June



FORSYTHIA FORTUNEI
Height When Full Grown, 5-6 Ft.
Blooms in April





d Evergreen Shrubs arf Trees

the care and attention paid to the planting of ornamentals, shapes and sizes among shrubs provides an opportunity a bit of consideration a beautiful as well as useful

ve confined our list to those easily packed and shipped minimum. However, we handle varieties other than those to these unlisted varieties.

plants. A dozen of any variety will be supplied for ten (2), but this dozen rate may be used only when six or of any variety will be promptly sent if desired. We lists of Shrubs and Ornamental Trees for landscape light only; not by parcel post.

Shrub Collection

variety of Color From Spring Till Fall

ous plants, that will delight you with their ing and summer. Two each of the six varie- ular value \$5.70.

rice, \$5.00 TWELVE SHRUBS



HYDRANGEA ARBORESCENS (Hills of Snow)
Height When Full Grown, 3-4 Ft.
Blooms June to August



DEUTZIA—Pride of Rochester
Ultimate Height, 6-8 Ft.
Blooms in May



WEIGELA ROSEA
Ultimate Height, 4-5 Ft.
Blooms in June

Choice Deciduous and Evergreen Shrubs and Dwarf Trees

MUCH of the beauty of the home depends upon the care and attention paid to the planting of ornamental shrubs and trees. The wide range of colors, shapes and sizes among shrubs provides an opportunity for a variety of planting schemes, and with a bit of consideration a beautiful as well as useful planting can be achieved.

We have purposely omitted many varieties and have confined our list to those easily packed and shipped and of strong, rugged habit to reduce their care to a minimum. However, we handle varieties other than those listed, and will appreciate your inquiries with reference to these unlisted varieties.

The prices quoted are for well-developed, stocky plants. A dozen of any variety will be supplied for ten times the price of one (six for five times the price of one), but this dozen rate may be used only when six or more of one variety are taken. The hundred rate of any variety will be promptly sent if desired. We solicit an opportunity to give special quotations upon lists of Shrubs and Ornamental Trees for landscape planting. Shipment can be made by express or freight only; not by parcel post.

50th Anniversary Shrub Collection

Twelve Shrubs That Will Provide a Variety of Color From Spring Till Fall

Here are twelve shrubs, all sturdy, vigorous plants, that will delight you with their masses of colorful blooms throughout the spring and summer. Two each of the six varieties illustrated on this page, 2 to 3 feet—regular value \$5.70.

TWELVE SHRUBS Special Price, \$5.00 TWELVE SHRUBS



LILAC—Purple
Height When Full Grown, 6 - 8 Ft.
Blooms in May



HYDRANGEA ARBORESCENS (Hills of Snow)
Height When Full Grown, 3 - 4 Ft.
Blooms June to August



SPIRAEA VAN HOUTTEI
Height When Full Grown, 4-5 Ft.
Blooms in May - June



FORSYTHIA FORTUNEI
Height When Full Grown, 5-6 Ft.
Blooms in April



DEUTZIA—Pride of Rochester
Ultimate Height, 6 - 8 Ft.
Blooms in May



WEIGELA ROSEA
Ultimate Height, 4 - 5 Ft.
Blooms in June

Deciduous and Evergreen Shrubs (Continued)

HARDY SHRUBS

Acer Palmatum Atropurpureum (Japanese Blood-leaf Maple)—This variety, which is really a dwarf growing tree, although it is generally looked upon as a shrub, is extremely popular because of its striking appearance throughout the spring and early summer months. Its foliage is quite rightly described as "Blood-red"; in fact, foliage of Japanese Blood-leaf Maples is more brilliant than that produced by any other variety. 12 to 18 in., \$4.50; 18 to 24 in., \$6.50 each.

ALTHEAS

Anemoniflora—A variety producing large, double red flowers.
Duc de Brabant—A very attractive variety producing double, dark red flowers.
Boule de Feu—Double, deep crimson.
Joan of Arc—Double, pure white.
Lady Stanley—Medium size, semi-double, of palest pink splashed with carmine.
Totus Alba—Very large, single, pure white.

Prices, any of above named varieties. 1½ to 2 ft., 35c; 2 to 3 ft., 50c; 3 to 4 ft., 75c each.

Standard or Tree Altheas—Straight stems, 4 to 5 ft. high, with well-formed heads. Either red, pink or purple. Each, \$3.50.

AMYGDALUS (Flowering Almond)

Japonica Nana—Double, soft pink flowers. Blooms very early in the season. A most attractive variety.

Japonica Nana Alba—White form of above. Splendid plants of either variety, 2 to 3 ft., each, 75c.

ANDROMEDA (Lily-of-the-Valley Shrub)

Floribunda—Early in April it bears a profusion of delicate white flowers which somewhat resemble "Lily of the Valley," hence the name. This

broad-leaved Evergreen is splendid for foundation plantings, rock gardens, etc. Heavy specimens, 12 to 18 in., \$2.50; 18 to 24 in., \$3.50 each.

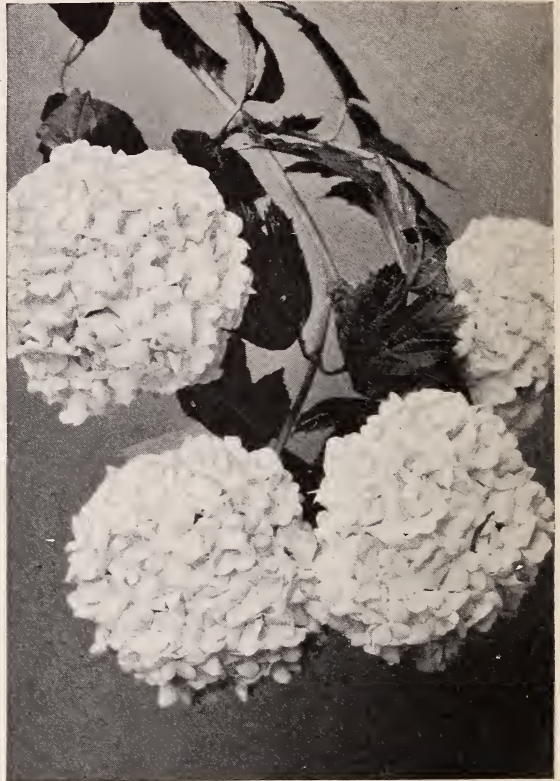
HARDY AZALEAS

Azalea, J. T. Lovett

Positively the most beautiful hardy Evergreen Azalea we have ever seen. The flowers are produced in such great profusion as to completely envelop the plant, and resemble, in size and make-up, those of a fine *Azalea Indica*. They are rich, brilliant carmine-lake in color. The plants are perfectly hardy and gave us a delightful experience last winter by coming through in better shape than any other variety of Evergreen Azalea, of which we grow quite a number. Flowers during late June and July. 9 to 12 in., \$2.50; 12 to 15 in., \$3.00; 15 to 18 in., \$4.50; 18 to 24 in., \$7.50 each.

Amoena—A dense, dwarf growing shrub, with slender branches and semi-double flowers of bright, cheerful rosy-purple, produced in such great numbers as to literally envelop the bush in June. The dense, box-like foliage, which is deep green with metallic luster, renders it a charming plant all year. Bushy plants, 9 to 12 in., \$1.50; 12 to 15 in., \$2.25; 15 to 18 in., \$3.50 each.

Calendulacea (Flame Azalea)—Not an Evergreen variety, but one of the best of all Azaleas. Of comparatively strong growth, attaining an ultimate height of 6 or 8 feet if allowed to grow without pruning. Produces flowers in great abundance during the month of May and early in June, these flowers ranging from lemon-yellow to deep orange. This variety is one of the choicest of all Hardy Shrubs. 18 to 24 in., \$2.50; 2 to 3 ft., \$4.00 each.



COMMON SNOWBALL
The Large, Round Blossoms are Very Showy



A PLEASING PLANTING
OF ALTHEAS

Deciduous and Evergreen Shrubs (Continued)

AZALEAS (Continued)

Hinodegiri—Is of broad, spreading habit, with beautiful evergreen foliage and many fiery-red, single flowers. Bushy plants, 6 to 9 in., \$1.25; 9 to 12 in., \$1.75; 12 to 15 in., \$2.50; 15 to 18 in., \$4.50 each.

Ledifolia Alba, Indica Alba (Snow Azalea) Strong-growing variety, produces very large snow-white flowers, occasionally light lavender. 12 to 15 in., \$1.50; 15 to 18 in., \$2.50; 18 to 24 in., \$3.50 each.

Viscosa (Commonly known as "Swamp Honeysuckle")—Of great hardiness and delightfully fragrant. White flowers during late June. Well budded specimens. 2 to 3 ft., \$2.50; 3 to 4 ft., \$3.50 each.

BUDDLEIA (Butterfly Bush)

Magnifica—The long, graceful and exquisitely fragrant spikes of flowers as illustrated are of a pleasing, rich violet-rose and are produced in profusion from early June until late autumn. See illustration page 37. Splendid large plants, 50c each.

BUXUS (Boxwood)

Sempervirens—The ever popular Boxwood. Of medium height frequently grown in globe or pyramidal shape. Slow-growing but most enduring. Bushy plants, 12 to 18 in., \$1.25; 18 to 24 in., \$2.50 each.

Suffruticosa—See Hedge Plants. Our stock is extra sturdy and heavily rooted.

CALYCANTHUS or Allspice

Sweet Scented or Strawberry Shrub—Bears great numbers of double, dull brownish-purple flowers of exquisite, aromatic, strawberry-like fragrance. 1½ to 2 ft., 75c; 2 to 3 ft., \$1.00 each.

CLETHRA (Sweet Pepper Bush)

Alnifolia—Of rather low growth, with dense, light green foliage. Covered in July and August with spikes of small, creamy-white, fragrant flowers. 12 to 18 in., 50c; 18 to 24 in., 75c each.



AZALEA—J. T. Lovett



Individual Flower of Azalea J. T. Lovett,
(Reduced Size)

CORNUS (Dogwood)

Alba, Sibirica (Red-barked Dogwood)—Vivid, bright red bark, hence very showy. 2 to 3 ft., 50c; 3 to 4 ft., 75c each.

Florida (White-flowered Dogwood)—In late May and early June it is enveloped in white flowers. 5 to 6 ft., \$2.50; 6 to 8 ft., \$4.50 each.

Florida Rubra (Pink-flowered Dogwood)—With rosy-pink flowers. Blooms during May and early June. 2 to 3 ft., \$4.00; 3 to 4 ft., \$6.00; 4 to 5 ft., \$8.00 each.

Paniculata (Gray Dogwood)—The flowers are succeeded by white fruit on red peduncles. 2 to 3 ft., 50c; 3 to 4 ft., 75c each.

Stolonifera Aurea (Golden-barked Dogwood)—Has yellow bark. 3 to 4 ft., 75c; 4 to 5 ft., \$1.00 each.

CYDONIA (Japanese Flowering Quince)
Japonica (Pyrus Japonica)—Spiny shrubs with green, glossy leaves and large, showy, scarlet flowers during May-June. 12 to 18 in., 50c; 18 to 24 in., 75c each.

DAPHNE (Garland Flower)

Cneorum—A prostrate, evergreen shrub of spreading habit, with small, pink, delightfully fragrant flowers throughout summer and fall. Specimen plants, each, \$1.50; dozen, \$15.00.

DEUTZIA

Candidissima—Strong, upright grower, with pure, double white flowers in June.

Crenata fl. pl. (Double Deutzia)—Of tall habit. Double pinkish flowers during June.

Crenata Alba fl. pl. (Pride of Rochester)—Pure white form of above. See page 33 for colored illustration.

Gracilis—Of dwarf habit. Pendulous white flowers in June. 12 to 18 in., 60c each.

Lemoinei—Dwarf habit. In June the plants bear white flowers. 15 to 18 in., 60c; 18 to 24 in., 75c each.

Scabra Watereri—Good grower, with beautiful, single pink flowers in June.

Prices, except as noted, 2 to 3 ft., 40c; 3 to 4 ft., 60c; 4 to 5 ft., 75c each.



SYRINGA
Philadelphus virginale

Shrubs (Continued)

EXOCHORDA or Pearl Bush

Grandiflora—White flowers in profusion. Soft, light green foliage. 2 to 3 ft., 60c; 3 to 4 ft., 90c; 4 to 5 ft., \$1.25 each.

FORSYTHIA (Golden Bell)

Fortunei—A strong, upright grower, bearing heavy canes that are literally loaded, in very early spring, with golden bell-shaped flowers. See page 32 for colored illustration.

Intermedia—Very free-flowering.

Suspensa—A pendulous growing variety, and one of the best.

Viridissima (Green-barked Forsythia) — A free-flowering shrub of spreading habit and yellowish-green bark. Bell-shaped yellow flowers.

2 to 3 ft., 50c; 3 to 4 ft., 75c each.

HYDRANGEA

Arborescens Sterilis, *Arborescens Grandiflora* (Snowball Hydrangea)—Large, full heads of snow-white flowers in lavish profusion, from late in June until late in August. See colored illustration on page 33.

Paniculata Grandiflora—In August it produces broad terminal panicles of pure white flowers, frequently a foot long.

Paniculata (Single)—Highly recommended in landscape planting. Blooms in September. Flowers creamy-white.

1 to 1½ ft., 40c; 1½ to 2 ft., 50c; 2 to 3 ft., 65c; 3 to 4 ft., 90c each

KALMIA (Mountain Laurel)

Latifolia—Among our native hardy evergreen shrubs, the Laurel ranks supreme. During June it is at its greatest glory, with its dainty, rose-pink buds and creamy-white flowers. Bushy plants, 12 to 18 in., \$1.50; 18 to 24 in., \$2.00; 2 to 3 ft., \$2.50 each. Write for special quotations on carload lots.

KERRIA (Double-flowered Globe Flower)

Japonica fl. pl.—Slender, green branches and pretty, closely serrated leaves. The double flowers are deep orange-yellow and are produced in profusion throughout the summer months. 2 to 3 ft., 90c each.

LIGUSTRUM or Privet

Privets are described in detail on pages 44-45
Globe or Ball Privet—The California Privet, grown to form a dense, solid ball of foliage. 12 in. in diameter, \$1.00; 18 in. in diameter, \$1.50; 24 in. in diameter, \$2.50 each. Large specimens from \$3.50 to \$7.50 each.

LONICERA (Honeysuckle)

Fragrantissima (Fragrant Bush Honeysuckle) — Exquisitely fragrant creamy-pink flowers.
Morrowi—White flowers in May, red berries in late summer.

Tartarica (Tartarian Bush Honeysuckle) — Fragrant pink flowers in May; waxy, light red berries in late summer.

Any of the three varieties, 3 to 4 ft., 60c; 4 to 5 ft., 90c each.



ALTHEA—Rose of Sharon

Shrubs (Continued)

MALUS (Flowering Crab Apple)

A most interesting group of trees, largely natives of the highlands of Western China. They are strong growers, bear lovely flowers, followed by ornamental fruits that will attract birds to your garden.

Ioensis Plena (Bethel's Crab) — Large, double, fragrant clear pink flowers.

Atrosanguinea (Carmine Crab) — Bright pink flowers during May.

Spectabilis (Chinese Crab) — Coral buds, delicate rose flowers.

Purpurea (Purple-leaf Crab) — One of the showiest. Bright red flowers, purple foliage, purple fruits.

All varieties, 3 to 4 ft., \$2.50; 4 to 5 ft., \$3.50 each.

PHILADELPHUS (*Syringa*)

Coronarius (Mock Orange) — Of upright habit and produces, in June, a wealth of white, fragrant flowers.

Gordonianus (Gordon's Mock Orange) — A large shrub with spreading branches; 8 to 10 feet tall. Produces its white flowers in great racemes late in the summer.

Grandiflorus — Similar to *Coronarius*, with larger flowers but not so fragrant.



BUTTERFLY BUSH
Buddleia magnifica

PHILADELPHUS (Concluded)

Virginale — Vigorous and tall; flowers in dense clusters; large and double; pure white. Undoubtedly the best of all varieties. 18 to 24 in., 75c; 2 to 3 ft., \$1.00 each.

Zeyheri — Tall-growing, with large, fragrant white flowers. A fine sort.

Any of the above, except as noted, 3 to 4 ft., 50c; 4 to 5 ft., 75c each.

PRUNUS

Pissardi (Purple-leaf Plum) — A dwarf growing tree with deep purple foliage carried throughout the entire summer and fall months. 3 to 4 ft., \$1.00; 4 to 5 ft., \$1.50 each.

RHODODENDRONS (Great Laurel)

The finest of our native, broad-leaved Evergreen Shrubs and one that thrives best where it is disturbed the least.

Rhododendron Maximum — The hardiest of the species and a strong grower. Contrary to common belief, it does equally well in sun or shade, so long as the soil does not contain lime. Produces light pink flowers in late June and throughout July. Illustrated on page 39. 18 to 24 in., \$1.50; 2 to 3 ft., \$2.50; 3 to 4 ft., \$3.50 each.

Write for special quotations on carload lots.



SPIREA—Anthony Waterer
Spiraea Bumalda



Shrubs (Continued)

ROSA

Multiflora—Single white flowers in large clusters; vigorous grower; excellent for massing. Of exceedingly vigorous constitution. 2 to 3 ft., 50c; 3 to 4 ft., 75c each.

Rugosa (Japanese or Ramanus Rose)—Of sturdy, stocky habit, with a wealth of large, rich green leaves. Large, single, rose-colored flowers all summer. 1½ to 2 ft., 40c; 2 to 3 ft., 60c each.

SALIX

Caprea (Pussy Willow)—Our plants of this variety are of a very superior strain, which produces silvery buds in early spring, approximately double the size of the old-fashioned variety. Our customers planting this variety will, we are sure, be delighted. 3 to 4 ft., 75c each.

SPIRAEA

Anthony Waterer—Excels all others in brilliant purple crimson color. 12 to 18 in., 40c; 18 to 24 in., 60c each.

Arguta — Of semi-dwarf growth, covered with pure white flowers in early May. Its lace-like foliage causes plants of this variety to be attractive throughout the entire summer. 18 to 24 in., 50c each.

Billardi — Dense panicles of rosy-pink flowers from early June until late October. 2 to 3 ft., 40c; 3 to 4 ft., 60c each.

Billardi Alba—The white form of the preceding. 2 to 3 ft., 40c each.

Froebeli—Bright crimson flowers. Dwarf and similar to A. Waterer, but a trifle taller than that variety, with broader leaves. 12 to 18 in., 35c; 18 to 24 in., 50c; 2 to 3 ft., 75c each.

Opulifolia (Snowball-leaved Spiraea or Nine-bark)—Valuable for shaded locations. Tall growing. 4 to 5 ft., 75c each.

Opulifolia Aurea (Golden-leaved Spiraea)—The yellow-leaved form. White flowers in June. 3 to 4 ft., 50c; 4 to 5 ft., 75c each.

Prunifolia fl. pl. (Double Flowered Bridal Wreath) — In May and early June the branches are laden with masses of dainty, very double pure white flowers. 2 to 3 ft., 50c; 3 to 4 ft., 75c each.

Thunbergii—The slender, drooping branches are literally covered with small white flowers in May. Foliage turns to bright shades of red in autumn. 1½ to 2 ft., 60c each.

Van Houttei—The famous Bridal Wreath. In late May and early June its pure white flowers entirely cover the bush. One of the very best of all Hardy Shrubs. Illustrated on page 32. 18 to 24 in., 30c; 2 to 3 ft., 40c; 3 to 4 ft., 60c; 4 to 5 ft., 80c each.

STEPHENANDRA

Flexuosa—Of graceful, compact habit, with handsome fern-like foliage. 18 to 24 in., 40c; 2 to 3 ft., 60c each.

SYMPHORICARPUS

Racemosus (Snowberry)—An old favorite. In July and August it has small pink flowers, which are followed by great numbers of large, pure white, wax-like berries in clusters. Conspicuous and interesting. 2 to 3 ft., 50c each.

Vulgaris (Indian Currant, Coral Berry)—Of low-growing and graceful habit, with numerous small pink flowers in August and September, followed by dull red berries, which literally cover the branches and remain nearly all winter. 18 to 24 in., 35c; 2 to 3 ft., 50c each.

Vulgaris Variegata—Similar to its parents, excepting that it carries decidedly attractive variegated foliage. 2 to 3 ft., \$1.00 each.

SYRINGA (Lilac)

Villosa—A species from Japan. Large branching panicles; flowers light rosy-purple in bud, creamy-white when open; fragrant. Especially valuable as its flowers appear two weeks after those of other Lilacs. 2 to 3 ft., 75c each.

Vulgaris (Purple Lilac)—The variety of our grandmother's gardens. Of strong-growing, upright habit, and produces many large clusters of richly fragrant, light purple or true lilac flowers in early spring. Illustrated on page 32. 2 to 3 ft., 50c; 3 to 4 ft., 75c each.

Vulgaris Alba (White Lilac)—A variety of the above having large panicles of fragrant pure white flowers. 2 to 3 ft., 75c each.



YUCCA

Shrubs (Continued)

HYBRID LILACS

These named varieties of Lilacs are marvels of beauty and elegance—so far superior to the older varieties that but a faint idea of their worth can be given in print. They must be seen to be appreciated.

The following varieties are considered to be the very best of their respective colors.

Charles X—A strong grower of upright habit, with large, single purple flowers.

Mme. Lemoine—White. Immense clusters of beautiful double flowers. One of the best.

Marie Legraye—Pure white, medium sized flowers. An excellent variety. Single flowered.

Michael Buchner—Clear lilac, shaded blue on interior of petals. Buds deep pinkish lilac. Large. Double.

President Grevy—Double. Clusters large and full. Buds pale tones of lilac, flowers beautiful light blue.

Rubra de Marley (Red Marley)—Single, in large, full clusters. Flowers lilac, touched with blue. Pinkish buds.

Souv. de Ludwig Spaeth—Flowers large and single in very large, long, pointed clusters. Very rich dark purplish-red.

Alphonse Lavalle—The double bluish flowers of this variety look almost like flowers produced by double Hyacinths.

Mme. Cassimer Perrier—Produces very large, creamy white, double flowers.

Wm. Robinson—Flowers of this variety, which are double, are produced in very large, double trusses, and are deep violet, or violet-pink in color.

Any of above, strong, bushy, 2 to 3 ft. plants, ready to bloom, each, \$1.25.

Special Offer—One each of above ten fine sorts, for \$10.00.

TAMARIX

Africana—Of strong, upright, grotesque habit, with airy, slender leaves and a profusion of dainty, soft pink flowers in May. 2 to 3 ft., 50c; 3 to 4 ft., 75c; 4 to 5 ft., \$1.00 each.

VIBURNUM

Opulus Sterilis (Common Snowball or Guelder Rose)—Of strong growth and spreading habit. In late May and early June, it bears large, round clusters of pure white flowers. Illustrated on page 34. 18 to 24 in., 75c; 2 to 3 ft., \$1.00 each.

Plicatum (Japanese Snowball)—Of compact, upright habit with highly ornamental foliage, and bears dense clusters of pure white flowers in great profusion, during late May and early June. 18 to 24 in., \$1.00; 2 to 3 ft., \$1.50 each.

Dentatum (Arrow-wood)—One of the best for growing in dense shade, particularly where the soil is moist. Of semi-tall growth. 2 to 3 ft., 60c each.



RHODODENDRONS

WEIGELIA (Diervilla)

Candida (White Weigelia)—Produces handsome, pure white flowers freely during late spring and summer. 18 to 24 in., 50c; 2 to 3 ft., 75c each.

Eva Rathke—Deep garnet-red flowers are produced in abundance throughout the summer and autumn. 18 to 24 in., 50c; 2 to 3 ft., 75c each.

Desboisi—Small, dark crimson flowers. 2 to 3 ft., 60c; 3 to 4 ft., 75c each.

Hendersonii—Fine, compact habit; flowers medium size; outside of petals red, pink on the inside. 2 to 3 ft., 40c; 3 to 4 ft., 60c each.

Rosea Amabilis (Pink Weigelia)—Great masses of deep pink flowers in June. 2 to 3 ft., 40c; 3 to 4 ft., 60c; 4 to 5 ft., 80c each.

Rosea Nana Variegata (Variegated-leaved Weigelia)—Foliage is deeply margined with clear creamy white, distinctly defined. Light pink flowers in profusion during June. 18 to 24 in., 50c; 2 to 3 ft., 75c each.

XANTHORIZA

Apifolia (Yellow-root)—Of very dwarf growth, and splendid for use as a ground cover, especially in shady locations. Bushy plants, 30c each.

YUCCA (Spanish Bayonet)

Filamentosa (Adam's Needle)—The glory of the hardy or shrubby border during July when it throws up stout flower stalks four to five feet high, with great panicles of large, drooping, lily-like, creamy white flowers. It is entirely hardy and succeeds everywhere. 50c each.

YUCCA FILAMENTOSA FOLIIS VARIEGATA

A Highly Ornamental Form of the Old-Fashioned "Adam's Needle"

Here is a form of Yucca, or "Spanish Bayonet," with variegated leaves which are almost as attractive as those of the rare greenhouse plant, known as Pandanus Veitchi—a child of the tropics. Absolutely hardy and grows readily in any soil and situation. Each, \$1.50.



EVERGREENS MAKE AN IDEAL YEAR AROUND PORCH PLANTING

Evergreens

NATURE'S FINEST TREES

WITHOUT exception Evergreens are the best all around trees for the small home or great estate. In summer their cool green is colorful and refreshing, and they stand as beacons of warmth and hospitality in the cold whiteness of winter. They are among the longest lived of all trees and become more and more valuable as their size increases. The liberal planting of Evergreens will well repay you.



AMERICAN ARBOR VITAE

ARBOR VITAE

Biota Aurea Nana (Golden Arbor Vitae)—Globular shaped with yellow-edged foliage. An excellent foreground Evergreen in a group or extensive planting. 6 to 9 in., \$1.00; 9 to 12 in., \$1.50; 12 to 15 in., \$2.00 each.

Biota orientalis—Tall and slender. Rich dark green. 18 to 24 in., \$1.50; 2 to 3 ft., \$2.00; 3 to 4 ft., \$2.50 each.

Biota Rosedaleana—Of slow growth. Blue heath-like foliage. 9 to 12 in., \$1.35; 12 to 15 in., \$1.75 each.

Thuja occidentalis (American Arbor Vitae)—Bright green leaves of a yellowish hue on underside. Excellent for tall hedges, screens and windbreaks. Erect pyramidal habit. Grows rapidly and easily adapted to trimming so that height can be controlled. Grows 30 to 40 feet high. 18 to 24 in., \$1.25; 2 to 3 ft., \$2.00; 3 to 4 ft., \$3.50; 4 to 5 ft., \$5.00 each.

Thuja pyramidalis (Pyramidal Arbor Vitae)—A valuable Evergreen of compact, upright habit. Foliage a light green which it retains throughout the winter. 15 to 18 in., \$1.35; 18 to 24 in., \$1.75; 2 to 2½ ft., \$2.50; 2½ to 3 ft., \$3.00 each.

Thuja o. Compacta — Dwarf; globular. Splendid hedge plant; admits severe clipping. 9 to 12 in., \$1.25; 12 to 15 in., \$1.50; 15 to 18 in., \$1.75; 18 to 24 in., \$2.00 each.

Evergreens (Continued)

ARBOR VITAE (Concluded)

Thuja o. Douglasi Aurea—Formal, broad pyramidal shape. Yellow-green foliage. 15 to 18 in., \$2.00 each.

Thuja o. Elegantissima—Rich green foliage, tipped with yellow. 18 to 24 in., \$2.25; 2 to 2½ ft., \$3.00 each.

Thuja o. Globosa—Dwarf, close, compact, foliage a gray-green. 9 to 12 in., \$1.25; 12 to 15 in., \$1.50; 15 to 18 in., \$1.75 each.

Thuja o. Hoveyi—Bright green foliage—oval shaped. 12 to 15 in., \$1.50; 15 to 18 in., \$1.75; 18 to 24 in., \$2.00 each.

Thuja o. lutea—Foliage, clear, golden-yellow, of excellent staying qualities. 15 to 18 in., \$2.00; 18 to 24 in., \$2.50; 2 to 2½ ft., \$3.00; 2½ to 3 ft., \$3.50 each.

Thuja o. Reedi—Broad and bushy, densely branched conical tree. 12 to 15 in., \$1.50; 15 to 18 in., \$1.75 each.

Thuja o. Rosenthali—Deep green foliage, columnar type—medium growth. For formal use. 15 to 18 in., \$2.00; 18 to 24 in., \$2.75; 2 to 2½ ft., \$3.50; 2½ to 3 ft., \$4.50 each.

Thuja o. Spiralis—A distinct variety of erect, formal habit. Deep green foliage. 2 to 2½ ft., \$3.50; 2½ to 3 ft., \$4.50; 3 to 3½ ft., \$5.50.



Through the Year Evergreens Add That Touch of Refinement and Beauty

Thuja occidentalis Wareana—Very hardy; foliage dark, grayish-green color. 12 to 15 in., \$1.50; 15 to 18 in., \$2.00; 18 to 24 in., \$2.50; 2 to 2½ ft., \$3.00; 2½ to 3 ft., \$3.50 each.

JUNIPERS

Juniperus Chinensis Pfitzeriana—Broad, bushy type, useful in mixed planting. Green foliage. 15 to 18 in. spread, \$2.50; 18 to 24 in. \$3.00; 2 to 2½ ft., \$4.50; 2½ to 3 ft., \$6.00; 3 to 3½ ft., \$9.00 each.

Juniperus Communis—Dense growth, grayish-green foliage. Valuable for formal effects. 2½ to 3 ft., \$3.50; 3 to 4 ft., \$4.50 each.

Juniperus Communis Aurea—Prostrate growth with bright golden-yellow foliage. 12 to 18 in. spread, \$1.75; 18 to 24 in., \$2.50; 2 to 2½ ft., \$3.50 each.

Juniperus C. Hibernica—Erect, dense conical tree, grayish-green foliage. 18 to 24 in., \$1.75; 2 to 2½ ft., \$2.50; 2½ to 3 ft., \$3.00 each.

Juniperus C. Prostrata—Of dwarf, prostrate growth and habit. 12 to 18 in. spread, \$1.75; 18 to 24 in., \$2.50; 2 to 2½ ft., \$3.50 each.

Juniperus chinensis Columnaris (Columnar Chinese Juniper)—Rapid growing variety, forming attractive column of gray-green foliage. In every way a desirable sort. 3 to 3½ ft. specimens, \$7.50 each.

Juniperus Squamata Meyeri—Excellent for rock gardens or borders. Carries attractive blue-green foliage. 9 to 12 in., \$2.50 each.

Juniperus Excelsa Stricta—Close-growing pyramidal form with gray-green foliage. 9 to 12 in., \$1.50; 12 to 15 in., \$2.00; 15 to 18 in., \$2.50 each.



IRISH JUNIPER
Juniperus Hibernica



Evergreens (Continued)



PINES AND SPRUCES

JUNIPERS (Concluded)

Juniperus Virginiana glauca (Blue Cedar)—Extremely hardy and one of the most attractive of all blue foliaged Evergreens. Grows in columnar form. 2 to 2½ ft., \$3.50; 2½ to 3 ft., \$4.50; 3 to 3½ ft., \$5.50; 3½ to 4 ft., \$6.50 each.

SPRUCES

Picea Excelsa—Its rapid growth and great hardiness make this a favorite for shelter or mass effect. 12 to 18 in., \$1.00; 18 to 24 in., \$1.50; 2 to 3 ft., \$2.50 each.

Kosteriana (Koster's Blue Spruce)—Write for prices. We have an extra fine supply of large specimen plants.

Picea orientalis—Foliage smaller and more dense than other Spruces. Deep glossy green foliage. Very beautiful. 18 to 24 in., \$2.50; 2 to 3 ft., \$3.50 each.

Picea Pungens—Light green foliage. Very hardy. Fine for windbreaks or specimens. 15 to 18 in., \$3.00; 18 to 24 in., \$4.00 each.

PINES

Pinus Mughus—Dwarf, compact. Its dark green foliage and formal shape make it valuable in low plantings or rockeries. 12 to 18 in., \$3.00 each.

Pinus nigra. var. *Austriaca* (Austrian Pine)—Massive, spreading limbs, long, stiff needles. Thrives along the coast or inland. Handsome for specimen or open group planting. 18 to 24 in., \$2.50; 2 to 3 ft., \$3.50 each.

Pinus Resinosa—Reddish-brown bark. Foliage light green—a beautiful tree. 18 to 24 in., \$2.00; 2 to 3 ft., \$3.50; 3 to 4 ft., \$5.00 each.

RETINOSPORAS

Retinospora Filifera—Valuable for formal work. Medium height, foliage deep green. 12 to 18 in., \$2.00; 18 to 24 in., \$3.00; 2 to 3 ft., \$4.50; 3 to 4 ft., \$5.50 each.

Retinospora F. Aurea—Very scarce. Golden variety. Very graceful. Pure gold the year around. 12 to 15 in. spread, \$3.00; 15 to 18 in., \$3.50; 18 to 24 in., \$4.50 each.



ENTRANCE PLANTING OF EVERGREENS

Evergreens (Continued)

RETINOSPORAS (Continued)

Retinospora obtusa Crippsi—Lemon-yellow. Warm color note in garden or base planting. 12 to 18 in., \$3.00; 18 to 24 in., \$4.00.

Retinospora obtusa Gracilis—Compact, graceful in habit. Rich dark green, lace-like foliage. 15 to 18 in., \$3.00; 18 to 24 in., \$4.00; 2 to 2½ ft., \$5.00; 2½ to 3 ft., \$6.00; 3 to 3½ ft., \$7.50 each.

Retinospora obtusa Nana—Slow growing, dwarf. Rich dark green foliage. Used in pots or in gardens. 9 to 12 in., \$4.50; 12 to 15 in., \$6.00 each.

Retinospora Picifera—Tall, pyramidal shape; deep, glossy green, large leaved foliage. Fine for formal use when clipped. 18 to 24 in., \$2.50; 2 to 3 ft., \$3.50; 3 to 4 ft., \$4.50 each.

Retinospora Picifera Aurea—Similar to type in form and habit. Golden color. 18 to 24 in., \$2.50; 2 to 3 ft., \$3.50; 3 to 4 ft., \$4.50 each.

Retinospora Plumosa—Useful for hedges and formal work. Of broad, pyramidal shape. 12 to 18 in., \$1.75; 18 to 24 in., \$2.50; 2 to 3 ft., \$3.50; 3 to 4 ft., \$4.50 each.

Retinospora Plumosa Lutescens—Light green foliage tipped a lemon-yellow. Dwarf. 9 to 12 in., \$1.50; 12 to 15 in., \$2.00 each.

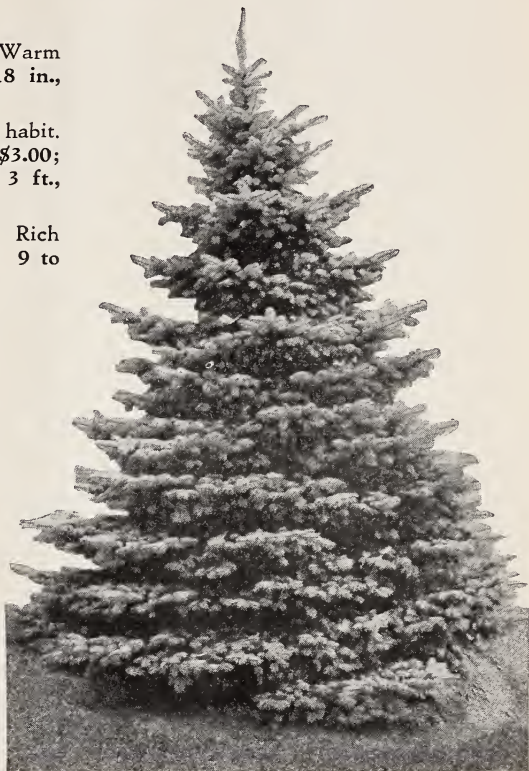
Retinospora Plumosa Aurea—Very hardy; fine for specimens or hedging. Golden foliage holds well through the summer. 12 to 18 in., \$1.75; 18 to 24 in., \$2.50; 2 to 3 ft., \$3.50 each.

Retinospora Plumosa Aurea Lovetti—The foliage has the appearance of being dusted with pure gold. 9 to 12 in., \$1.75; 12 to 15 in., \$2.50; 15 to 18 in., \$3.00; 18 to 24 in., \$4.00 each.

Retinospora Squarrosa Veitchii—Useful for hedging or as formal specimens. Silvery-blue foliage, soft and graceful. 9 to 12 in., \$1.50; 12 to 18 in., \$2.00; 18 to 24 in., \$3.00; 2 to 2½ ft., \$3.50 each.

YEW

Taxus Cuspidata Brevifolia—Handsome dwarf Evergreen. Spreading branches, thick with short dark green needles. 9 to 12 in., \$1.75; 12 to 18 in., \$3.00; 18 to 24 in., \$4.00.



KOSTER'S BLUE SPRUCE

HEMLOCK

Tsuga Canadensis—Excellent as a hedge plant or specimen. 12 to 18 in., \$2.00; 18 to 24 in., \$3.00; 2 to 3 ft., \$4.00; 3 to 4 ft., \$6.00; 4 to 5 ft., \$8.50 each.

Tsuga Sargentii (Sargent's Weeping Hemlock)—A very beautiful variety of decidedly pendulous growth. Scarce and high in price, but really cheap considering the beauty of the variety. Specimen plants, 18 in. or more in spread, each, \$12.50.



A FOUNDATION PLANTING OF EVERGREENS

Hedges of Beauty and Utility

ARTISTIC appreciation and economic necessity have swung the pendulum of public approval again to the living, growing hedge, and we find them much preferred to the cold, austere brick walls or iron fences of past years. Not only do they provide privacy, and beauty as well, but they also form a background or embellishment for practically any type of landscaping.

California Privet, first brought into prominence as a hedge plant by the founder of this Nursery, is undoubtedly the finest and most popular of all varieties.

We specialize in the production of Privet and Barberry, growing hundreds of thousands of these popular plants in various sizes. For landscape architects and others requiring large quantities we will be pleased to make special quotations.



GLOBE PRIVET—Showing Thick, Healthy Growth

Plants Suitable For Hedges—High or Low

LIGUSTRUM (The Privets)

A family of plants which, due to their rapid growth and ornamental foliage, are ideally adapted to forming dense hedges. All varieties of Privet stand shearing well and are readily trained to various shapes. For a hedge, plant in single row eight inches apart.

Ovalifolium (California Privet)—The popular hedge plant with glossy deep green leaves. Introduced by us as a hedge plant in the early seventies and now more largely planted for ornamental hedges than any other shrub. Its strong, quick, upright growth adapts it singularly well for being grown as a barrier or to hide unsightly objects.

| | Doz. | 100 | 1000 |
|-------------------|--------|---------|---------|
| 12 to 18 in. | \$0.60 | \$ 3.50 | \$30.00 |
| 18 to 24 in. | .80 | 5.00 | 40.00 |
| 2 to 3 ft. | 1.25 | 7.00 | 60.00 |
| 3 to 4 ft. | 1.75 | 10.00 | 90.00 |

We also have larger sizes, write for prices.

Note—A leaflet, giving instructions for the planting of Privet Hedges, mailed upon request.

Globe or Ball Privet—The California Privet, grown to form a dense solid ball of foliage. 12 in. in diameter, \$1.00; 18 in. in diameter, \$1.50; 24 in. in diameter, \$2.50. Large specimens, from \$3.50 to \$7.50 each.

Pyramidal Shaped California Privet—In appearance very much like pyramidal Boxwood. Well grown specimens, 2 to 2½ ft. high, \$2.50 each.



CALIFORNIA PRIVET

Hedge Plants (Continued)

IBOLIUM PRIVET (New)

A cross between California Privet and Ibota, having the attractiveness of California Privet and the hardiness of Ibota. Very desirable for Northern climates, where it has stood zero temperatures without injury. With us, it is almost evergreen, retaining its foliage until after Christmas. 12 to 18 in., dozen, \$2.00; 100, \$12.00; 1000, \$100.00.

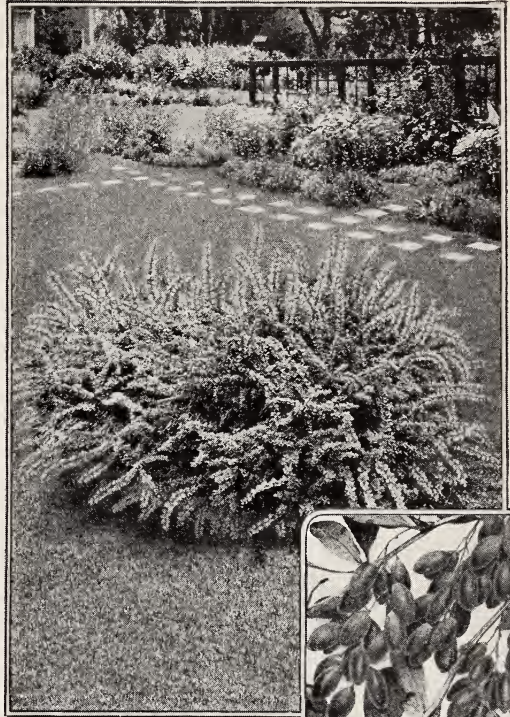
Write for quotations on larger sizes.

REGEL'S PRIVET

Ligustrum Regelianum—A very strong, vigorously growing shrub with white flowers, followed by black berries. Equally attractive in either hedge form or as specimen shrub, forming dense, symmetrical bushes. 18 to 24 in., each, 25c; dozen, \$2.50; 100, \$15.00. 2 to 3 ft., each, 35c; dozen, \$3.50; 100, \$25.00. 3 to 4 ft., each, 50c; dozen, \$5.00; 100, \$35.00.

HARDY NORTH AMOOR PRIVET

Ligustrum Amurense—Has olive-green foliage, and forms a dense and handsome hedge. Succeeds in the shade of overhanging trees much better than does California Privet. Has numerous panicles of white flowers during June; in the autumn the branches are loaded with conspicuous, steel-blue berries. Similar to *L. Ibota*, but the hardiest of all Privets.



BARBERRY
Looks Good as a Single Specimen

Prices of Amoor North Privet

| | Doz. | 100 | 1000 |
|-------------------|--------|---------|----------|
| 12 to 18 in. | \$1.25 | \$ 8.00 | \$ 60.00 |
| 18 to 24 in. | 1.75 | 10.00 | 80.00 |
| 2 to 3 ft. | 2.00 | 12.00 | 100.00 |
| 3 to 4 ft. | 2.50 | 15.00 | 135.00 |

BARBERRY

Berberis Thunbergii—Has become very popular for producing low, dense hedges. Its abundant, small light green leaves which turn to rich colors in autumn, and its wealth of scarlet berries render it very attractive. It is extremely hardy, and requires but little pruning. Ornamental and graceful the year around. For hedges set plants 12 inches apart.

| Transplanted: | Doz. | 100 | 1000 |
|-------------------------|--------|---------|----------|
| 9 to 12 in. | \$1.50 | \$ 8.00 | \$ 60.00 |
| 12 to 18 in. | 2.00 | 10.00 | 80.00 |
| 18 to 24 in. | 3.00 | 17.50 | 150.00 |
| 2 to 2½ ft. extra bushy | 5.00 | 30.00 | 250.00 |

NEW RED LEAVED JAPANESE BARBERRY

A new introduction that is exceedingly popular. Carries attractive red foliage throughout the entire summer and fall. It should be planted where it has full exposure to the sun in order to do its best. Strong, one-year-old plants, each, 75c; dozen, \$7.50; 100, \$50.00.



BARBERRY HEDGING



Hedge Plants (Continued)

BOX BARBERRY

A very dwarf, compact form of *Berberis Thunbergii* which it equals in ironclad constitution. Especially valuable for edging beds in formal gardening, or for forming low hedges anywhere. For edging, plant 4 inches apart; for a low hedge, plant 6 to 9 inches apart. Readily confined to any given space since it stands severe pruning to perfection.

| | Doz. | 100 | 1000 |
|---------------------|--------|---------|----------|
| 1 year, field grown | \$2.00 | \$15.00 | \$125.00 |
| 2 year, field grown | 3.50 | 25.00 | 200.00 |

ELEAGNUS ANGUSTIFOLIA (Russian Olive Hedging)

This variety, a native of Northern Asia, was, until a few years ago, regarded as a very rare variety of Ornamental Shrub. It, quite naturally, is extremely hardy and appears to thrive in very light, sandy soil, where most varieties of Shrubs would almost surely fail. It is one of our very best varieties for planting in close proximity to the ocean. Covered with silvery foliage, even when not producing its attractive cranberry-like berries, it is indeed an attractive variety.

Plants, 2 to 3 ft. high, doz., \$3.00; 100, \$20.00.
Plants, 3 to 4 ft. high, doz., 3.50; 100, 25.00.

DWARF BOXWOOD

Boxwood has been termed "the Antique" of the garden, since it grows to rare old age, improving in shape and outline as it grows older. Plant-

ing Boxwood is like investing in good bonds—you cannot lose!

Buxus Suffruticosa—This is of exceedingly slow growth, but becomes very compact and is most attractive. Delights in a partially shaded situation. For edging, plant 3 to 4 inches apart. Extra bushy plants, 4 to 6 in., dozen, \$3.50; 100, \$25.00; 6 to 8 in., dozen, \$5.00; 100, \$40.00.

ALTHEA or Rose of Sharon

Hibiscus syriacus—The adaptability of Althea as a hedge plant is due to its erect, compact growth and the uniform height of the plants. Especially valuable because it blooms in August, when the flowers cause a hedge of this to be a genuine delight to the eye. Particularly adapted to city planting, since it seems to stand dust and neglect better than most other shrubs. Separate colors or mixed, 18 to 24 in., dozen, \$2.00; 100, \$15.00. 2 to 3 ft., dozen, \$3.00; 100, \$22.00.

SPIRAEA VAN HOUTTEI

Eminently suitable for forming fine hedges. A more graceful object than a Spiraea hedge in full bloom is difficult to find. The very decorative foliage makes Spiraea Van Houttei a delight to the eye throughout the growing season. 12 to 18 in., dozen, \$2.00; 100, \$15.00. 18 to 24 in., dozen, \$3.00; 100, \$20.00. 2 to 3 ft., dozen, \$4.00; 100, \$30.00.

ROSA RUGOSA

Ideally adapted for forming well-nigh impenetrable hedges. By severely pruning them every year they may be kept within any desired limit of height, besides blooming more freely. 15 to 18 in., dozen, \$3.00; 100, \$20.00. 18 to 24 in., dozen, \$4.00; 100, \$30.00.

OUR LANDSCAPE DEPARTMENT AT YOUR SERVICE

We maintain a force of competent men ready to go any reasonable distance to plan and plant home grounds. They will be glad to meet you by appointment, without any obligation on your part.

It has been our privilege (and a pleasure) to embellish some of the largest estates in the East, and we shall be delighted to give, as reference, the patrons whom we have served in your neighborhood.



A FORMAL GARDEN, SUCH AS WE PLAN AND EXECUTE



Climbing Vines

VINES THAT CLING AND CREEP

We offer hardy vines that will thrive in all parts of the country, make a luxuriant growth and most of them will bear lovely flowers during their season.

Vines will be mailed, if cash is sent for postage as per table. Quotations by the 100 and 1000 of any variety given upon request. All are strong, two or three-year plants.

AMPELOPSIS

Veitchi (Boston or Japanese Ivy) — A most popular climber, clinging firmly to brick, stone or other material. Deep, glossy green, ivy-shaped foliage, which turns to crimson and gold in autumn. Strong, 2 years, each, 50c; dozen, \$5.00.

Quinquefolia (Virginia Creeper or American Ivy)—Of rapid, vigorous growth. Foliage turns brilliant crimson in fall. Strong, 2 years, each, 40c; dozen, \$4.00.

BIGNONIA

Radicans (Trumpet Flower)—Fern-like foliage and large, trumpet-shaped flowers of vivid orange-scarlet during mid-summer. Two years, each, 40c; dozen, \$4.00.

Grandiflora (Giant Trumpet Flower)—One of the most gorgeous climbers. The orange-scarlet flowers are like huge trumpets, while the fern-like foliage causes the plant to be ornamental throughout the season. Extra heavy, 2-year-old plants, each, \$1.50; dozen, \$15.00.

CELASTRUS

Scandens (Bitter-Sweet)—Rapid-growing, with orange-yellow fruit. Strong 2 years, each, 50c; dozen, \$5.00.

CLEMATIS

Paniculata (Japanese Virgin's Bower)—Unequaled for airy grace and beauty. It quickly grows to a height of 15 to 20 feet, and spreads freely. During August and September it resembles a sheet of fleecy white, composed of numerous pure white, star-like flowers. Two-year roots, each, 40c; dozen, \$4.00; 100, \$25.00.

CLEMATIS (Large Flowered)

Our supply of these deservedly popular climbers is now better than ever before. But the demand is great—we suggest prompt orders!

Henryi—Large, ivory-white flowers, freely produced nearly all summer.

Jackmanni—Large, rich, velvety violet-plum flowers.

Mme. Baron-Villard—Large, rosy-lilac flowers. A strong grower. Blooms late.

Mme. Edouard Andre—Rosy-carmine flowers in bewildering profusion.

Any of above, each, \$1.00; dozen, \$10.00.

Special Offer—One of each of the four large-flowered Clematis, for \$3.00.

EUONYMUS

Vegeta (Evergreen Bitter-Sweet)—Large, oval, evergreen foliage followed by clusters of orange-red berries. Two years, each, 50c; dozen, \$5.00.

HEDERA (Ivy)

Hibernica (English or Irish Ivy)—An old favorite vine, useful for covering walls and growing on trunks of trees. Also useful as ground cover. Strong plants from pots, each, 35c; dozen, \$3.50.

LONICERA (Honeysuckle)

Halleana (Hall's Japanese Honeysuckle) — A popular and very valuable vine with abundant, glossy, evergreen foliage. Exceedingly fragrant flowers from May until November. Two years, each, 30c; dozen, \$3.00; 100, \$20.00.

PUERARIA (Kudzu Vine)

Thunbergiana (Japanese Kudzu Vine) — The most rapid-growing plant known. Its large leaves produce a dense shade. Rose-purple, pea-shaped flowers during late August. Each, 40c; dozen, \$4.00.

VINCA

Minor (Periwinkle) — Known also as Trailing Myrtle. Of rapid growth, with glossy, evergreen leaves. Presents, in spring and early summer, a blanket of bright blue flowers. Each, 25c; dozen, \$2.50; 100, \$15.00.

WISTARIA (Glycine)

Sinensis (Chinese Wistaria)—Of rapid growth and attains a great height. In May its flowers of soft, dainty lavender-blue are produced in pendulous racemes a foot or more long. First-class, each, 50c; dozen, \$5.00.



CLEMATIS PANICULATA

Fruit Trees for Commercial Orchards and Home Gardens



WITH the use of fruit ever increasing, fruit trees present an even bigger interest than heretofore, both to the commercial grower and the home owner.

About the home, even the one with but a moderate amount of planting land available, the judicious selection and use of fruit trees will solve both the problems of fruit for the table and shade for the yard.

Every fruit tree listed in this guide is of the high-quality, with large, sturdy trunk and a well developed, healthy root system.

Apples

EVER THE MOST POPULAR FRUIT

Combining, as it does, all of the characteristics of a healthful, easily digested, palatable and attractive fruit, the apple remains the most popular of fruits. It is among the easiest to cultivate and most profitable of all fruit trees grown in temperate climates. From among the several thousand varieties grown we have selected those that are the best and will respond most readily to the growing conditions of this country.

Plant 30 feet apart, each way, thus requiring 48 trees to properly plant one acre.

All apple trees offered in this catalog are two years old, or older, and first-class in every respect; we have never grown better. Price of all varieties of Apple trees (except Lovett), each, 75c; dozen, \$7.50; 100, \$40.00.

We will be glad to quote by letter, extra fine, one-year-old Apple trees to those wishing same for commercial orchards.

Baldwin—Early winter. Dark red, of good quality. Thrives best in Northern latitudes.

Banana (Winter Banana)—Late fall. Beautiful waxen yellow with blush cheek, large, very beautiful, highest quality.

CORTLAND

A decided improvement on McIntosh, an excellent variety for late keeping, and also a splendid shipper. Comparatively speaking, Cortland averages larger than McIntosh and is more uniform in size. Fruits are more highly colored, the red being of a lighter and brighter shade. The flesh is quite firm and juicy. In season of ripening it comes several weeks after McIntosh, and the apples cling longer and better to the trees.

Delicious—(See illustration of a typical specimen on this page.) No other sort, within the recollection of the oldest fruit growers, has so completely won the country on the basis of sheer merit as has Delicious. The Apples vary slightly in shape and coloring in different sections and on different soils, but are always of good size. Early winter.

Lovett Apple—Years of association with the best in nursery stock has made us especially careful of the new variety of plant, flower, tree or shrub, to which we give the name, LOVETT. Twelve years ago, with fullest confidence that it would be a credit to us, we named this Apple The Lovett. And today, after submission to all tests of climate and cultural conditions, as a fruit par excellence, and a sturdy, well growing tree, it has justified itself. It is an abundant summer bearer, unusually prolific, and a most beautiful

specimen to behold. Ripening in the early part of August, it produces an Apple of pleasing flavor, firm flesh, and above average in size. While the above characteristics would be sufficient to make it popular, it possesses, in addition, a texture of flesh and aromatic flavor that make it one of the finest quality Apples imaginable. Superior in many respects, to old McIntosh. Each, \$1.50; dozen, \$15.00.



DELICIOUS APPLE

Apples (Continued)

Each, 75c; dozen, \$7.50; 100, \$40.00.

English Coddling—Fruit large to very large; form round and flat; color, greenish-yellow, with dull red cheek where exposed to sun; good quality, rather acid. One of the best cooking and market Apples of its season. Ripens from mid-August to September, when the demand for large, green Apples is greatest.

Gravenstein—Large; yellow, nearly covered with dull red. September and October.

Grimes' Golden—Of just medium size, but very delicious; matures in early winter.

Jonathan—Late winter. Round, of medium size, fine grained and of acid flavor.

King—It is one of the most widely planted Apples in home orchards, and sells for a higher average than most other standard Apples. The fruits are a beautiful red on a yellow background, uniformly large and symmetrical. It is crisp, tender, juicy, aromatic, and richly flavored. King requires fertile, well-drained soil and sheltered situations to do its best. Winter.

Maiden Blush—Favorably known everywhere for over a century, it attained and holds its popularity chiefly by virtue of its distinctive and very handsome crimson-cheeked, lemon-yellow fruit. Very good for cooking. Late fall.

McIntosh—Autumn. A most beautiful Apple of extra high quality. Deep red in color; a splendid keeper.

Twenty Ounce—Continues to hold its own as the East's standard fall Apple, by virtue of many excellent characteristics. Fruits are extra large, handsomely colored, with stripes and splashes of red. Unsurpassed for cooking.

Red Astrachan—Early summer. Large; deep crimson; flesh white, of a rich acid flavor.

Rhode Island Greening—Large; yellowish-green; tender, juicy and rich. November to March.

Rome Beauty—Winter. Mostly red with some yellow; excellent keeper; reliable.

Stayman's Winesap—One of the finest Apples for fancy trade and always in demand. Of delicious, spicy flavor and juiciness. November until late April.

Wealthy—Unique in its production of white fleshed, juicy beauties. The fruit is exceptionally handsome and smooth. A splendid winter variety.

Williams Early Red—The fruit is large, bright crimson, of most attractive shape, and of good quality. Among the best early summer Apples.

York Imperial (Johnson's Fine Winter) Medium to large; greenish-yellow, nearly covered with bright red; flesh firm and juicy; vigorous growth. November to March.

Yellow Transparent—One of the finest among the extremely early bearers. Very productive of medium to large Apples of uniform shape. Flesh white, juicy and spicy.

A Branch of the
Wonderful
Lovett Apple



Pears

STANDARD VARIETIES

Plant 20 feet apart.

First-class Trees (except as noted otherwise), each, \$1.00; dozen, \$10.00.

Angouleme (Duchess)—Introduced over a hundred years ago from France, this is more generally grown throughout New York than any other, and deservedly more popular than most other kinds. The fruits are of magnificent size, rather irregularly shaped at times, but always of most delightful flavor, melting and delicious.

Anjou—Late autumn. Green with red cheek; high quality, juicy and melting; strong-growing tree, prolific.

Bartlett—Summer. Yellow; the most widely grown and the most popular of all varieties. When fertilized freely this variety has an inclination to blight; does best when grown in sod.

Clapp's Favorite—Early summer. Green with red cheek; large, juicy, melting; prolific; decays quickly when ripe.

DOUGLAS PEAR—A remarkable new Pear that is heralded everywhere as the finest of Pears. Here is a **BLIGHT-FREE PEAR**—in which is **COMBINED** the best qualities of all leading varieties—with the drawbacks of none. It bears even more profusely than the Kieffer. It begins to bear at an earlier age than any other Pear on earth and ripens in the late fall. It ranks with the best in shape, size and coloring. In flavor it excels others—rich, melting, sweet, juicy, tender—altogether delicious.

Remarkably hardy and vigorous, does not require rich soil or close attention and care. Sturdy, two-year-old trees, each, \$2.00; dozen, \$20.00.

Kieffer—Autumn. Yellow, with red cheek; coarse grained and of rather inferior quality, though it can be kept until mid-winter, and when thoroughly ripe is very good. Perhaps the most extensively grown of all winter varieties. Used largely for canning.

Seckel—Very prolific. Though rather small, it is of extremely high quality. Ripens late in summer and is a dull red with much russet. Considered by many the acme of perfection in Pear quality.

Plums

THREE NEW HARDY PLUMS OF DECIDED MERIT

Plant Plums 20 feet apart each way.

All varieties in strong, two and three-year-old trees, each, \$1.00; dozen, \$10.00.

Loring—The fruit is of good size, and of very handsome, deep red color when ripe. Tender, juicy flesh.

Sapa—Popular new Cherry-Plum hybrid. Has deep, wine-red flesh. Ripens quite early, a heavy bearer, and the trees bear quite young. Rich purple juice and wine-red flesh.

Waneta—A heavy annual bearer of handsome, dark red plums. Flesh of firmest texture, yellow, and of delightfully sweet flavor.

PLUMS—Standard Varieties

Abundance (Japanese)—Early. Amber, much covered with carmine. Very juicy and of excellent quality; heavy annual bearer. Best and most reliable plum for New Jersey.

Burbank (Japanese)—Ripens late in August. Inclined to overbear but, when properly thinned, produces fruit of immense size. Cherry-red with deep yellow, sweet flesh.

Bradshaw—Early and very large. Purple with bloom; of very fair quality; strong-growing variety, one of the best for canning.

Grand Duke—Color of Bradshaw. Fruit large, of fine quality, free from rot, very productive.

Lombard—Mid-season. A very reliable and popular variety. Very prolific. Violet-red fruits.

Monarch—Very large, dark purplish-blue, good quality. Prolific.

Moore's Arctic—Belongs to the

Damson class. Purplish-black, juicy, sweet, good. Late.

Reine Claude (De Bavary)—Mid-season. Green, marked with red on sunny side.

Yellow Egg—Very large, egg-shaped. A little coarse but excellent for cooking.

\$1.00 each; \$10.00 per dozen.



DOUGLAS PEARS.

Lovett's Peaches for Best Crops

The delectability of the Peach, both for table service and preserving, needs but few words of comment. It is looked forward to every year, during the growing season, with great anticipation and is hailed with joy and pleasure when ripened and ready for eating.

Through transplantation by migratory nations, throughout past centuries, it has been branched into hundreds of varieties, one or more of which meet practically every climatic or soil condition.

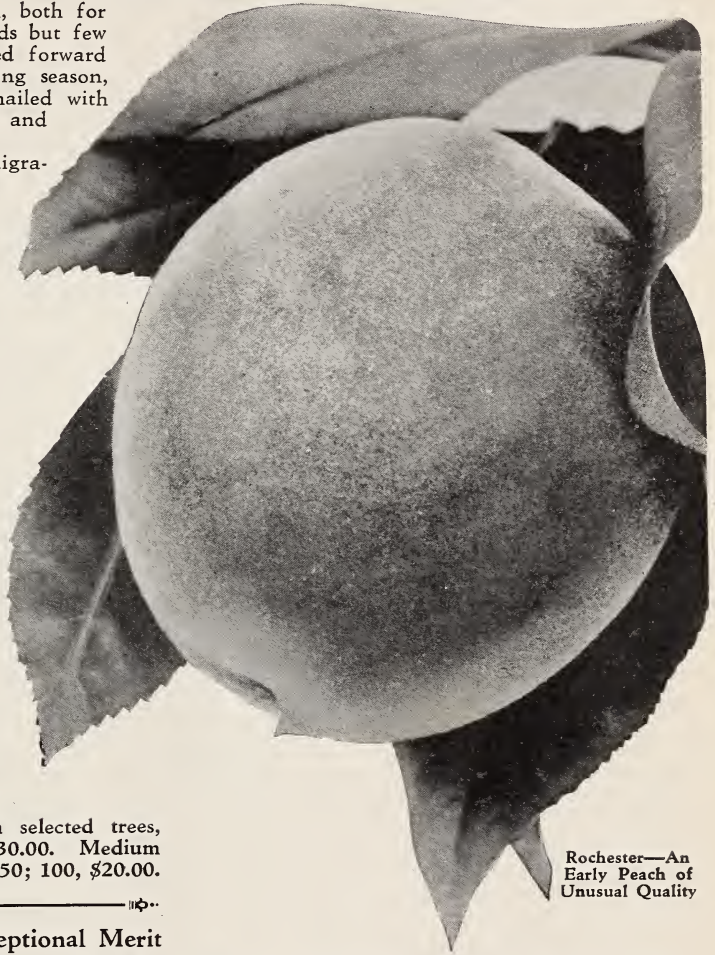
In keeping with the general practices of our nurseries, here among the Peaches you will find offered none but those which are the best. Through management and specialization we offer this splendid stock at unusually low prices.

Plant 18 feet apart each way.

We offer the finest stock of peach trees that we have had in many years. Such grade, or type, of trees as ours is not generally offered at the prices quoted. However, our supply is such as to make it possible to sell these "best ever" grades at truly reasonable prices.

Orchardists are invited to ask for special quotations on large quantities and on lighter grade of trees, of which we have a large supply.

Price, except as noted, extra selected trees, each, 50c; dozen, \$5.00; 100, \$30.00. Medium grade trees, each, 35c; dozen, \$3.50; 100, \$20.00.



Rochester—An Early Peach of Unusual Quality

Four New Varieties of Exceptional Merit

Cumberland—A semi-freestone, white-fleshed Peach, maturing the first of all high quality sorts. A superior variety in quality, appearance and resistance to rot.

Eclipse—A yellow-fleshed, second early freestone of high quality. Should prove most profitable as a commercial variety because of its season of ripening and its firm, yellow, high quality flesh.

Primrose—A seedling of Belle of Georgia crossed with Elberta, originated at our New Jersey Agricultural Experimental Station. Produces yellow-fleshed, freestone fruit of splendid quality, ripens with Belle of Georgia, recommended as a splendid yellow fleshed variety to precede Elberta.

Radiance—A seedling of Belle of Georgia crossed with Greensboro; ripens a few days after Cumberland. It resembles Belle of Georgia in shape, size and general appearance.

Prices, any of above four splendid varieties: each, 75c; dozen, \$7.50; 100, \$40.00. Medium grade trees, each, 50c; dozen, \$5.00; 100, \$30.00. Smaller trees at lower prices to orchardists buying quantities.

Belle of Georgia—Mid-season. White, largely overspread with red; firm; sweet; freestone.

Carmen—The earliest standard variety of merit. White flesh; semi-clingstone.

Crawford's Early—Large, yellow with red cheek; flesh yellow, juicy, sweet. Middle of August.

Elberta—Mid-season. Fruit large. Yellow, deep red cheek. Best known and most largely grown.

Hiley—Second early. Creamy white, deep red cheek. Flesh white, very juicy, of fine quality.

Iron Mountain—A very late, extra high quality, white-fleshed, freestone variety. One of the highest in quality of all Peaches.

J. H. Hale—In season of ripening it bridges the gap between Rochester and Elberta. Very large, round shape, deep golden-yellow skin, overlaid with carmine; flesh golden, of high quality.

Rochester—A valuable, extra early, yellow Peach that begins to bear quite young. Tree is vigorous. The fruit grows to immense size, beautiful orange-yellow, blushed and mottled with dark red spots. The yellow flesh is very juicy and highly flavored. Freestone.

Delicious Eating Cherries

UNSURPASSED FOR PIES AND CANNING

Lovett's Cherry trees are all strong, thrifty, vigorous, well-rooted trees which will give utmost satisfaction in the home garden or commercial orchard. A few of these excellent trees will provide a bounteous supply of Cherries. Plant sweet varieties 25 feet apart each way, and sour varieties 20 feet each way.

First-class trees, each, \$1.00;
dozen, \$10.00.

Black Tartarian (Sweet) — Undoubtedly more largely planted in the East than any other sweet Cherry. Beautiful dark purple; of medium size and very good quality. Early.

Early Richmond (Sour) — Bright red, very acid, extremely prolific; popular.

Gov. Wood (Sweet) — A variety that does exceedingly well in the East. The fruit is red and amber, and of excellent quality.

Lambert (Sweet) — Jet black when fully ripe. Flesh firm, solid, rich and juicy. Tree rugged, strong grower, hardy, enormous bearer. Late July; sweet and good.

Mortmorency (Sour) — The most largely planted of the sour varieties. Light red, very acid; popular for pie making.

Napoleon (Sweet) — Pale yellow and bright red; of great size; juicy and sweet.

Rockport (Sweet) — Large, clear red, shaded pale amber. Firm and juicy.

Schmidt's Bigarreau (Sweet) — An abundant bearer of highest quality Cherries. The black fruits are simply immense in size and of that quality so characteristic of this class.

Windsor (Sweet) — Deep purple, large, extremely firm.

Yellow Spanish, White Amber (Sweet) — Pale amber, with red on sunny side; large, firm, juicy, of high quality; beautiful.



LAMBERT CHERRIES

CRAB APPLES

Besides being regular and heavy yielders of fruit useful for jellies, these are quite ornamental as shade trees. Plant 30 feet apart each way. First-class trees, each, 75c; dozen, \$7.50.

Hyslop — Large, deep crimson, very prolific; makes excellent jelly. Mid-autumn.

Transcendent — Very popular. Red and Yellow. Early autumn

Dwarf Fruit Trees Bearing Standard Size Fruits

Bearing a big crop of large fruit on a very small tree means that the dwarf fruit tree opens up a wide avenue of opportunity for his own fruits to the owner who has but a limited amount of space. Spaced about the city or suburban lot, at from eight to ten feet apart, they permit of the enjoyment of fruit, and yet leave room for flowers, walks, grass, etc.

Bearing in some cases the same year planted, they frequently present good fruit the second year. In considering this, bear in mind that the larger growing **Standard** trees seldom start bearing before having been planted from four to eight years.

We can not emphasize too much the fact that these trees are dwarf in size only. They bear a large crop of full sized fruit, and in connection with landscaping, are very neat, compact and symmetrical trees.

We present a stock and an assortment of varieties of Dwarf Apple and Pear Trees that is unexcelled.

It would seem that these sturdy little trees have a host of reasons to govern your choice and confidence in them. The yield per tree, when the amount of space they occupied is considered, is as good, and in some cases better than that of standard trees. The fruit of the dwarf tree is much easier to pick, and the tree itself easier to care for, cultivate and prune.

Our stock of both Dwarf Apple and Pear trees was never better. They are thrifty, healthy stock with clean, straight limbs, full of vigor and vitality that hold promise of early returns in form of fruits.

DWARF APPLES

The varieties that we have are as follows: **Baldwin, Delicious, Duchess, Grimes' Golden, McIntosh, Red Astrachan, Rhode Island Greening, Rome Beauty, Stayman's Winesap, Wealthy and Yellow Transparent.** All are fully described on preceding pages. **Splendid, 2-year-old trees, each, \$1.50; dozen, \$15.00.**

DWARF PEARS

Truly, Dwarf Pear trees are the ideal fruit trees for the suburban garden and small estate, and you will find our stocks of varieties named below exceptionally fine.

Plant ten feet apart each way. We can supply Dwarf Pear trees in

the following varieties, viz.: **Angouleme, Anjou, Bartlett, Clapp's Favorite and Seckel.** All varieties in selected 2-year-old trees, each, \$1.50; dozen, \$15.00.

Quinces

Quinces—Plant 10 feet apart each way. First-class trees, each, \$1.00; dozen, \$10.00.

Champion—Produces large, greenish-yellow fruit on strong-growing trees. Extensively grown. Late.

Orange (Apple)—Earlier than Champion, bearing large, yellow fruit in great abundance.

Louisville, Ky.

The fruit trees and Grape vines which I ordered from you have both arrived in good shape, and I am very well pleased with them.

JOHN B. FETTER.

Philadelphia, Pa.

Delighted with the trees, they are wonderful. Thank you.

WM. H. STEACY.



A TYPICAL LOVETT'S DWARF APPLE TREE

Superb Raspberries

CULTURE

Plant red or upright growing varieties in rows 6 feet apart, plants 3 feet apart in the rows, requiring 2,420 plants per acre; or 4 feet apart each way, if to be grown in hills. In the garden, plant 4 feet apart each way, restrict to hills, permitting but 3 or 4 canes to remain in each hill.

ST. REGIS EVERBEARING OR RANERE

Would you not consider that seventeen years of trials and tests were sufficient to prove a Raspberry?

It was our pleasure, seventeen years ago, to introduce the St. Regis Raspberry, and today we are just as happy to call your especial attention



to this fruit. It is slightly smaller than some of the real large varieties, but the lusciousness of the fruit more than compensates for that. It is an abundant bearer right up to freezing weather. If planted early in the spring, or fall preceding, it will yield a moderate crop the first season.

St. Regis is such a thrifty and rugged bush that it will produce a large number of suckers. Limit these to a single row of plants or not to exceed 3 or 4 to a hill.

Selected sucker plants, dozen, \$1.00; 100, \$5.00; 1000, \$35.00. Transplanted plants, dozen, \$1.50; 100, \$7.50; 1000, \$60.00. Heavy fruiting plants, dozen, \$3.00; 100, \$20.00.

Cuthbert—Introduced by us in 1878. For twenty-five years it was the most largely planted of all red Raspberries and is still very popular. Berries of large size, deep crimson, moderately firm and of high quality, being rich and spicy. Canes of strong growth, with large, healthy foliage, but not entirely hardy during severe winters. Mid-season. Sucker plants, dozen, \$1.00; 100, \$5.00; 1000, \$35.00. Wonderful heavy fruiting age plants, dozen, \$3.00; 100, \$20.00.

Columbian (Cap)—Because of its dull red color this is not a good market variety, but for the home garden, where quality counts most, it is one of the very best. The fruit, which is dull purplish-crimson, is of high quality and is excellent for making jelly and jam. Canes both hardy and prolific. Succeeds everywhere. Ripens in mid-

season, continuing quite late. Heavy tip plants, dozen, \$1.50; 100, \$7.50. Transplanted plants, dozen, \$2.50; 100, \$15.00.

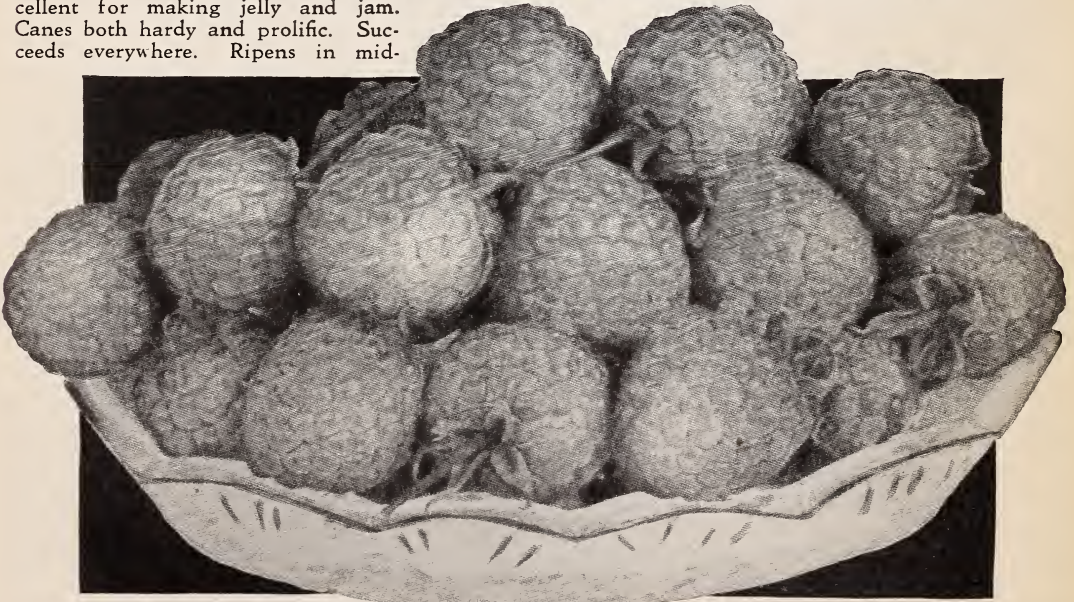
Donboro—Ripening about a week before Cuthbert, one of the earliest varieties of good quality. Selected sucker plants, dozen, \$2.00; 100, \$10.00.

Golden Queen—Introduced by us in 1885, and by far the best yellow-fruited variety. Though not red, we class this with the red varieties, as it is of the same habit and requires the same culture. Of luscious quality and a valuable variety for the home garden. Sucker plants, dozen, \$1.50; 100, \$10.00. Heavy transplanted plants, dozen, \$2.50; 100, \$15.00.

Herbert—Disease resistant, splendid seller in nearby markets where size never fails to win customers. Good yielder under all conditions. Selected sucker plants, dozen, \$1.00; 100, \$5.00.

Ohta—An extremely hardy, vigorous growing sort, bearing beautiful scarlet, firm berries. Has fall-bearing tendencies. Sucker plants, dozen, \$1.00; 100, \$5.00. Transplanted plants, dozen, \$1.50; 100, \$7.50.

Victory—Hardy, most attractive red variety, of record yielding power. Strong growth plants that will resist hot or dry weather. Selected sucker plants, dozen, \$2.00; 100, \$10.00. Heavy transplanted plants, dozen, \$3.00; 100, \$20.00.



GOLDEN QUEEN, the Berry Delight for Connoisseurs

Superb Raspberries (Continued)



ST. REGIS

LA FRANCE

The Queen of Red Raspberries

In the La France, the lovers of Red Raspberries will find expressed to the greatest degree all of those qualities which create such a desire for this fruit. Late crops, the most choice fruit, are quite frequently heavier than the earlier ones. The berries are a deep pink, bordering on the red, and are juicy with a delicious flavor quite indescribable in all of its appeal through printed words. Selected sucker plants, dozen, \$3.00; 100, \$20.00. Heavy fruiting age plants, dozen, \$5.00; 100, \$35.00.

King—This combines earliness, bright color, firmness, and excellent quality of its berries with vigorous growth, productiveness, and hardness of cane in an extraordinary degree. Sucker plants, dozen, \$1.00; 100, \$5.00. Transplanted plants, dozen, \$1.50; 100, \$7.50.

LATHAM

Another season's extensive tests have proven to our thorough satisfaction that this is surely the very best of all sorts for many sections. It is a splendid, strong growing variety, and produces immense quantities of bright red, extra large berries during the latter part of June and well into July. Heavy sucker plants, dozen, \$2.00; 100, \$10.00. Extra strong transplanted plants, dozen, \$3.00; 100, \$20.00.

WHITE QUEEN (Everbearing)

Bears From June Until Freezing Weather.

This beautiful, white-fruited everbearing species (*Rubus strigosus albus*) is in some respects actually an improvement upon St. Regis, its fruit being larger and its quality simply superb. Due to extraordinary demands, our supply of plants of White Queen had become alarmingly low during the past few years, but we are now in a position to fill orders for any reasonable quantity and suggest that you give this superbly flavored sort a good trial. It is of particularly allur-

ing appearance when served with fruit of a bright red variety and, as already stated, its quality is the very highest. Selected sucker plants, dozen, \$5.00, 100, \$30.00.

Black Raspberries

Cumberland—Produces, in great profusion, the largest berries of any Blackcap that we have ever grown, ripening in mid-season and continuing for two weeks. Tips, dozen, \$1.00; 100, \$5.00. Heavy transplanted plants, dozen, \$2.00; 100, \$10.00.

HONEY SWEET

Every connoisseur will surely enjoy the fruit of Honey Sweet, which is remarkably rich, sweet, and luscious. Canes are of strong growth and yield heavily. Ripens early to mid-season. We consider it by far the best of all Blackcaps. Selected tip plants, dozen, \$1.50; 100, \$7.50.

Kansas—The most widely grown "Blackcap" because of its reliability and the excellence of its fruit. The canes are of strong growth, hardy and exceedingly prolific. Berries of large size, jet black, firm, sweet, and excellent. One of the very best of the Blackcaps as a shipper. Ripens early. Tips, dozen, \$1.00; 100, \$5.00.

Plum Farmer—The berries are of highest quality, large size, and firm, meaty texture. Most valuable for market growers. Tips, dozen, \$1.00; 100, \$5.00. Heavy transplanted plants, dozen, \$2.00; 100, \$10.00.

Scarff—Superior to old Gregg, which it surpasses in every way. Its fruit is almost, if not fully, as large as Cumberland, and it is produced in much greater profusion than that variety. Absolutely hardy and a vigorous grower. Tips, doz., \$1.25; 100, \$6.00.



WHITE QUEEN
Raspberries are
Delicious as a
Table Fruit



LOVETT'S
MT. POCONO
BLACKBERRIES

Black Raspberries

(Continued)

QUEEN—A remarkably fine Blackcap variety, never before offered, but one which has been thoroughly tested in this state for the last three years. This variety is the strongest, most robust growing variety of Blackcap Raspberry that we have ever seen, and produces throughout the entire month of July immense clusters of bright, jet black, delicious, sweet berries in unbelievable abundance. Our tests of the variety have revealed no weakness whatever; in fact, if our plants of black Queen continue to behave in future years in anything like so satisfactory a manner as they have these past three years, we feel sure that the variety will supercede all other Blackcap varieties. Because of the great merit of this variety, and also because our supply of plants is as yet decidedly limited, we cannot send more than 12 plants to any one person. Price, 3 plants for \$2.50; 6 plants for \$4.50; 12 plants for \$7.50.

1000, \$45.00. Transplanted, dozen, \$1.50; 100, \$7.50.

Early Harvest—An old variety and a favorite. The mild, sweet berries are rather small but firm and symmetrical. Ripens very early; sometimes suffers from winter injury in the North. Dozen, \$1.00; 100, \$4.50; 1000, \$40.00. Transplanted plants, dozen, \$1.50; 100, \$7.50. **Eldorado**—Among the highest in quality. Very popular. Berries of medium size, jet black, mild, sweet and melting. Fruits early to mid-season. Dozen, \$1.00; 100, \$4.50; 1000, \$40.00. Transplanted, dozen, \$1.50; 100, \$6.00.

Joy Blackberry—A unique combination of absolutely proven hardness backed by an ironclad constitution. A prolific bearer of super-quality berries. Price, selected root-cutting plants, dozen, \$1.50; 100, \$7.50; 1000, \$60.00. Transplanted plants, dozen, \$2.00; 100, \$10.00.

Taylor—A most profitable late variety. Dozen, \$1.00; 100, \$4.50; 1000, \$40.00. Transplanted plants, dozen, \$1.25; 100, \$6.00.

Blackberries

General List of Varieties

In field culture, plant in rows from five to seven feet apart (according to the vigor of the variety) and three feet apart in the rows. In the garden, plant in rows five feet apart and the plants three feet apart in the rows.

LOVETT'S MOUNT POCONO

It resists zero climates successfully, bears fruit above the average size and the quality is extra high. Being a hardy, vigorous grower, with healthy, strong-growing canes, it logically is also a heavy producer of quality berries.

We heartily recommend Lovett's Mount Pocono Blackberry for sections having extreme climatic conditions. Selected root-cutting plants, dozen, \$2.50; 100, \$10.00. Transplanted plants, dozen, \$3.50; 100, \$15.00.

Blowers—On fertile soils, canes often grow ten or twelve feet. Twenty degrees below zero has not harmed it and it is a phenomenal cropper. Dozen, \$1.00; 100, \$5.00;

Blackberries (Continued)

TEXAS EVERBEARING

Bearing continuously from early August until late autumn, it is truly an everbearing sort. R. C. plants, dozen, \$1.50; 100, \$7.50; 1000, \$60.00. Transplanted, dozen, \$2.00; 100, \$10.00; 1000, \$75.00.

Ward—The canes are of strong growth, are hardy and yield a heavy crop of large, handsome berries of first quality. Dozen, \$1.00; 100, \$5.00; 1000, \$40.00. Transplanted, dozen, \$1.25; 100, \$6.00.

Iceberg—Best mid-season white. Bears very profusely. Berries sweet and tender. Should be planted near some good black-fruit pollinizer, in order to yield freely. Dozen, \$1.00; 100, \$7.50.

Kenoyer—Ripens with us by July 1st. It is hardy and produces medium-sized berries of excellent quality. Dozen, \$1.00; 100, \$5.00. Transplanted, dozen, \$1.25; 100, \$6.00.

La Grange—A valuable, large yielding, early ripening, long season variety. Of fine size and superb quality. Dozen, \$1.00; 100, \$6.00. Transplanted plants, dozen, \$1.50; 100, \$7.50.

Macatawa—Fruit sweet, almost seedless and entirely coreless. A strong, prolific, upright grower and extremely hardy. Dozen, \$1.50; 100, \$7.50; 1000, \$50.00. Transplanted, dozen, \$2.00; 100, \$10.00; 1000, \$75.00.

Mersereau—Of great size, luscious flavor, great hardiness, great productiveness and unusual freedom from diseases. R. C. plants, dozen, \$1.00; 100, \$6.00. Transplanted plants, dozen, \$1.50; 100, \$7.50.

Star or Wonder—Of exceptionally sturdy constitution. Berries are of medium size, attractive appearance and rich, luscious quality; keep in firm condition for a long time. Ripens very late. Should be grown on trellis, like grapes. Dozen, \$1.00; 100, \$5.00. Transplanted plants, dozen, \$1.50; 100, \$7.50.

NOTE—Our Blackberry plants are either **ROOT-CUTTING PLANTS** that have been grown from pieces of roots in nursery rows, or they are heavily rooted, bearing age **TRANSPLANTED** plants. Both are far superior to ordinary sucker plants, which **WE DO NOT** grow! When requested, plants will be sent by mail, provided cash is sent for postage.

DEWBERRIES

Lucretia—Is sweeter and equals in size the best varieties of Blackberries. Of slender, trailing habit, the vines are entirely hardy except at the far North; succeed on all soils (even very sandy), and are exceedingly prolific. Dozen, 75c; 100, \$4.00; 1000, \$35.00. Extra strong transplanted plants, dozen, \$1.50; 100, \$7.50.

Austin's Improved—The earliest Dewberry and the first to ripen of the Blackberry family. The berries are large, nearly round and of excellent quality. Ripens earlier than Lucretia. Dozen, \$1.00; 100, \$5.00. Extra strong transplanted plants, dozen, \$1.75; 100, \$9.00.

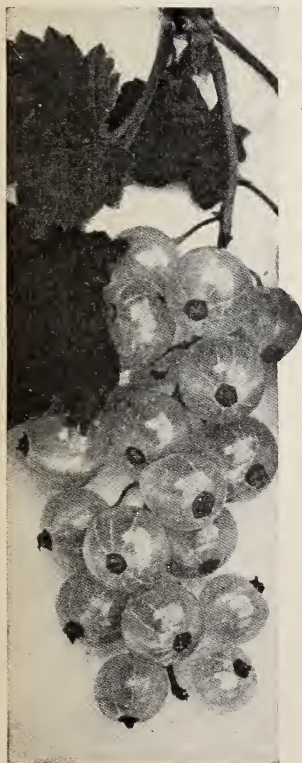
CURRANTS

Uniform prices for all varieties (except as quoted otherwise); 1 year, each, 30c; dozen, \$3.00. 2 years, each, 40c; dozen, \$4.00.

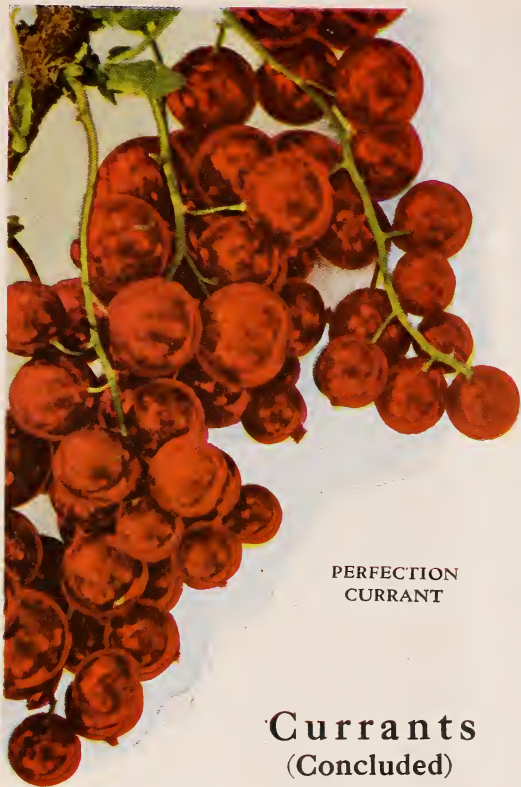
Cherry and Versailles—Large berries, short clusters, bright, sparkling crimson, of sharp and acid flavor.



LUCRETIA DEWBERRIES



WHITE GRAPE CURRANT



PERFECTION
CURRANT

Currants (Concluded)

PERFECTION

Equally satisfactory in various soils and sections. A strong grower, it is naturally very prolific. Ripens in mid-season and the berries remain in good condition for a long time. The berries are of large size, being clear, bright, sparkling red and with juice of highest quality. 1 year old, each, 40c; dozen, \$4.00. 2 years old, each, 50c; dozen, \$5.00.

Fay's Prolific—Bunch and berry large, bright and sparkling. A regular and prolific bearer.

Pres. Wilder—Produces, late in the season, very large bright red, juicy berries of high quality.

Red Cross—Exceptionally vigorous growth. Bears great crops of good sized, sparkling red berries.

White Grape—By far the best of the white fruited sorts. It is a beautiful translucent white and of mild, good quality. 1 year old, each, 40c; dozen, \$4.00; 2 years old, each, 50c; dozen, \$5.00.

Other Berries Useful for Dessert and Preserving

Plants will be shipped by mail, provided cash is sent for postage as per table on inside back cover.

LOGANBERRIES

This most interesting hybrid is the result of crossing a wild California Blackberry with a Raspberry, probably the old Red Antwerp. The berries are of great size, equalling large Blackberries, and are deep reddish-maroon in color. In flavor, they are rich and refreshing. Dozen, \$4.00; 100, \$25.00. Heavy transplanted plants, dozen, \$5.00; 100, \$35.00.

GOOSEBERRIES

Oregon Champion—Entirely distinct from all others in foliage and habit of growth. It is of slender, willowy growth—not a very strong grower. The berries when fully ripe are pale amber, of excellent quality and of good size. 1 year, each, 50c; dozen, \$5.00. 2 years, each, 75c; dozen, \$7.50.

Carrie—It is a marvel of productiveness, a splendid, strong grower and one that holds its foliage much later in the season than do most others. When ripe, it is maroon in color and of good quality, though rather small. 1 year, each, 30c; dozen, \$3.00. 2 years, each, 40c; dozen, \$4.00.

Downing—The most popular market variety. The pale green berries are of large size and fair quality. 1 year, each, 40c; dozen, \$4.00. 2 years, each, 50c; dozen, \$5.00.

STRAWBERRY-RASPBERRY

Another delightful, everbearing cane-fruit for which we are indebted to the Orient. Where the seasons are very cold, it acts like a herbaceous perennial, plants freezing to the ground and coming up again the following spring. They are too tart to be eaten raw but, combined and cooked with Raspberries, they develop a flavor certain to delight any epicure. Strong plants, dozen, \$2.50.

WINEBERRY

This interesting native of the wilds of Asia forms a most welcome addition to our fruit gardens. The berries are exceptionally useful in making a delightful wine as well as most palatable preserves. Rather acid as a dessert fruit unless quite ripe. Heavy plants, dozen, \$2.50; 100, \$15.00.

Strawberries

How to Enjoy Abundant Crops of Fine Big STRAWBERRIES

BECAUSE of their extreme popularity and desirability, it is gratifying to know that Strawberries will grow in any climate and thrive in most any soil, providing reasonable attention is given to their slight needs. Soil that is low and sour is about the only exception that must be noted. By careful selection of the varieties best suited to your soil and climate, and the inclusion of Everbearers you can be assured of delicious berries for your own consumption,

or commercial uses, from early June until late frosts.

Within the limitations of the home garden it pays well to take particular pains in the preparation of the soil. The beds should be dug or plowed deeply and liberal quantities of well-rotted manure should be incorporated. Particular care should be exercised to have the surface rich, mellow and well provided with plant food, for the Strawberry plant is a heavy but shallow sur-

Strawberries (Continued)

face feeder. A top dressing of ground bone will be found a great benefit at fruiting time.

For hill culture in the family garden, plant in rows two feet apart and the plants a foot apart in the rows, cutting off all runners as they appear. If to be allowed to grow in matted rows, set the plants in rows three feet apart and the plants one foot apart in the rows.

Lovett's Special Selection of Highest Quality Varieties for Exacting Home Gardeners POT-GROWN Plants

Were you to ask us our personal preference in berries producing high quality fruits in generous quantities we would unhesitatingly recommend the following:

- 20 Joe—An ideal mid-season.
- 20 Lupton—Very best late season.
- 20 Premier—An early, succeeding nearly everywhere and of excellent quality.
- 20 Wm. Belt—A long bearing, early mid-season.
- 20 Mastodon Everbearing—See this page.

Special—A total of 100 pot-grown plants, a retail catalog value of \$13.30, for only \$10.00. This is absolutely the greatest value we have ever offered.

EARLY JERSEY GIANT

Without question the earliest fruiting variety, combining size, attractive color and superb flavor in an extraordinary degree. It is the largest of all early varieties, regardless of class. The very large, brilliant scarlet-crimson berries are of simply delicious flavor. So rich is their aroma that a fair-sized dish of ripe berries will perfume a room. The beautiful berries are of conical form, with a pointed tip. Plants are strong growers and heavy yielders. Layer plants, dozen, 75c; 100, \$2.00. Pot-grown plants, dozen, \$1.25; 100, \$8.00.

JOHN H. COOK

"The Variety for Everybody's Garden"

Among second early varieties there is no heavier cropper. In growth, constitution and other worthwhile qualities we consider it one of the best of the many Van Fleet hybrids. Equally valuable for home use or market, its somewhat irregular shape is easily offset by the delicious flavor which very much resembles that of wild Strawberries. John H. Cook most nearly approaches our idea of an ideal berry. Layer plants, dozen, \$1.00; 100, \$2.50. Pot-grown plants, dozen, \$1.50; 100, \$10.00.

SPECIAL OFFER

We will send a dozen each (36 in all) of the three wonderful Van Fleet Hybrids, Early Jersey Giant, John H. Cook and Edmund Wilson (all pot-grown), for \$4.00, or 25 of each for \$7.50.



HOME GROWN STRAWBERRIES ARE SO MUCH BETTER THAN MARKET FRUIT

Strawberries (Continued)

EDMUND WILSON

The Giant Strawberry

Nothing is lost in this berry through its large size. The fruit is of excellent quality. Merely because of its dark color it is not of the best market variety, but for the home garden and home consumption there isn't a point of flavor, juiciness, productiveness this berry will not meet. Pot-grown plants, doz., \$1.50; 100, \$10.00.

The Best Among Everbearing Strawberries

MASTODON

Called by Some Western Specialist "The Wonderberry"

We find this to be truly the largest, most delicious and heaviest yielding of all Everbearing sorts. It out-yields some of the finest June bearing sorts during their season and continues to bear, throughout summer and fall, berries of amazing size and surpassing quality. Layer plants, dozen, \$1.25; 100, \$4.00; 1000, \$30.00. Pot-grown plants, dozen, \$2.50; 100, \$15.00.

CHAMPION EVERBEARING

Apparently a seedling of Superb, and like it in many respects, though it is much more productive and the fruit is larger.

Layer Plants, dozen, \$1.00; 100, \$3.50; 1000, \$25.00. Pot-grown Plants, dozen, \$1.50; 100, \$10.00.

Progressive—Of vigorous habit, with large, clean leaves. The berries, which are smooth and uniform in size, are deep crimson, glossy, and of good quality. Layer plants, dozen, 75c; 100, \$2.50; 1000, \$20.00. Pot-grown plants, dozen, \$1.25; 100, \$8.00.

Superb—The berries are nearly round, smooth, dark crimson, glossy and of sweet flavor. Layer plants, dozen, 75c; 100, \$2.50; 1000, \$20.00. Pot-grown plants, dozen, \$1.25; 100, \$8.00.

The Choicest Among June-Bearing STRAWBERRIES

Uniform prices for all sorts, except as quoted. Layer plants, dozen, 50c; 100, \$1.50; 1000, \$10.00. Pot-grown plants of all sorts (except as quoted otherwise): dozen, \$1.00; 100, \$7.00.

Brandywine—Bears great quantities of uniformly large, bright crimson berries that are firm and of good quality. Mid-season.

CHESAPEAKE

The berries are uniform in size and shape; almost heart-shaped; the color is bright crimson and the flesh firm and of excellent quality. Ripens late mid-season. Layer plants, dozen, 65c; 100, \$1.75; 1000, \$12.00. Pot-grown plants, dozen, \$1.25; 100, \$8.00.

Gandy—Very firm; of only fair quality, but decidedly attractive in color and shape.

Glen Mary—An extremely productive mid-season sort of extra high quality. Should be planted near some good pollenizer, such as Joe.

Howard No. 17—A remarkably strong growing second early. Berries large, beautiful and of superlative quality.

Joe—This Strawberry ripens just after the Chesapeake; equals it in size, firmness and yield.

Judith—Bears early. Of finest flavor. Pot-grown plants, dozen, \$1.25; 100, \$8.00.

Lupton—Very much like Gandy, but more productive and about five days earlier.

Marshall—Mid-season. High quality.

Plants Bound to Grow and Bear

We specialize in pot-grown plants, but we grown great quantities of layer plants as well, hence we offer both.

The difference in cost between pot-grown and layer plants stands for the investment in human labor plus the life insurance policy attached to pot-grown plants.

MASTODON
Note the
Large Size
Strawberries in
Comparison to
Size of
Basket





Lovett's Grapes For Dependable Results

Vineyards have occupied a central position, not only in the pages of history but in the progress of man. The Grape has ever been a favorite of man, and in days gone by was symbolic of feasts. It retains its position today, and is a favorite fruit. Justly so, for it contains many of the useful salts and minerals so necessary to health. And to tempt those who should have these things, it offers a flavor unique and delicious.

LOVETT'S CACO GRAPE

Awarded the highest honor ever conferred upon a new Grape—A Medal by The American Institute of New York.

The production of the Caco Grape, and its subsequent introduction by us, came as an answer to the demands of the gardeners who desired certain qualities in a Grape. They wanted, in one grape, appearance, flavor and hardiness.

Caco Grapes combine all the desirable features demanded by growers with none of the defects of less satisfactory varieties. Their hardiness, richness of flavor, coloring, and productiveness proclaim the Caco the finest of Grapes and we have no hesitancy in recommending this variety to the most critical enthusiast. Search where you may, none can surpass the Caco as the Grape supreme and most desirable. Illustrated on page 62.

Prices of Caco Grape vines, 2 year old, each, 90c; dozen, \$9.00; 100, \$65.00. Heavy fruiting age vines, each, \$2.00; dozen, \$20.00.

Standard Varieties of Grapes

The Pick of the Choicest

Agawam—Deep red, almost maroon. Large, loose bunch; berries large, meaty, with rich aro-

matic flavor. Ripens a little after Concord. 2 years, each, 50c; dozen, \$5.00. Heavy fruiting age vines, each, \$1.00; dozen, \$10.00.

Brighton—Until the introduction of Caco, this was regarded as the highest in quality of all hardy Grapes. The medium-sized berries are wine-red, and the bunches run somewhat larger than those of Caco. Ripens in mid-season. 2 years, each, 50c; dozen, \$5.00.

Champagne—An exceptionally prolific bearer of amber colored clusters. Because of its rather thin skin it is particularly useful for home gardens. Of strong constitution, it is practically immune to attacks of fungus diseases and it has proven so hardy everywhere that it has never been known to winter kill. It bears immense crops of medium size bunches, while the individual berries are very large. The quality is exceptionally high, the flavor very sweet and sugary—altogether it is an ideal sort for making a delicious wine or grape juice. It also has few equals as a table variety. 2 years, each, 75c; dozen, \$7.50; 100, \$50.00. Heavy fruiting age vines, each, \$1.50; dozen, \$15.00.

Campbell's Early—A superb early-ripening black Grape. Produces extra large bunches of fruit that is not only attractive in appearance, but of superb quality. Because it is lacking in pollen, this sort should be planted near some variety that is free in pollen. Diamond is excellent for this purpose. Incidentally, the two sorts form a great combination of highest quality fruits. 2 years, each, 75c; dozen, \$7.50.

CATAWBA—The standard red Grape of eastern America. The vine is vigorous, hardy, and productive. Clusters large, long, and broad. Berries of medium size, dull purplish-red with thick bloom; firm. 2 years, each, 50c; dozen, \$5.00.

Concord—Best known and most popular variety in America. It succeeds practically everywhere. Its large black berries are borne in large



CACO

Standard Varieties of Grapes (Continued)

bunches and, being covered with a decided bloom, they are of most attractive appearance. Of good quality. 2 years, each, 25c; dozen, \$2.50; 100, \$12.00; 1000, \$95.00. Heavy fruiting age vines, each, 75c; dozen, \$7.50.

Delaware—An old-time red variety. Bunch and berry small, refined, high quality. Prolific, but a rather weak grower and somewhat subject to mildew. 2 years, each, 50c; dozen, \$5.00.

Diamond (Moore's)—Bunches large and compact. Berry large, greenish-white, juicy and of good quality. A vigorous grower and prolific. Ripens early. 2 years, each, 50c; dozen, \$5.00. Heavy fruiting age vines, each, \$1.00; dozen, \$10.00.

Goethe—This is particularly recommended for sections having a long growing season. It ripens quite late, long after Concord has gone. But its late ripening makes it also an excellent keeper and since we consider it one of the finest flavored red Grapes under cultivation, we are sure that gardeners will like it. The individual ber-

ries are very large, although the bunches run rather irregularly, some being larger than others. Altogether a very profitable and well-liked variety, wherever grown successfully. 2 years, each, 75c; dozen, \$7.50.

Hubbard—Quality sweet and delicious, having fine and pleasant flavor. Skin is thin and firm; berries and bunch large and uniform. Ripens about ten days earlier than Concord and is similar in color. 2 years, each, 75c; dozen, \$7.50.

One Hundred Days of Perfect Grapes and How to Have Them

The desire to enjoy a liberal supply of luscious Grapes over a long period of time is easily gratified if you choose sorts maturing in succession. Of course, all Grapes ripen during late summer or fall, but some come earlier than others and most late sorts vary as far as keeping qualities are concerned. Therefore, we offer to solve for you herewith the problem of "Grapes over a Long Season," by means of the

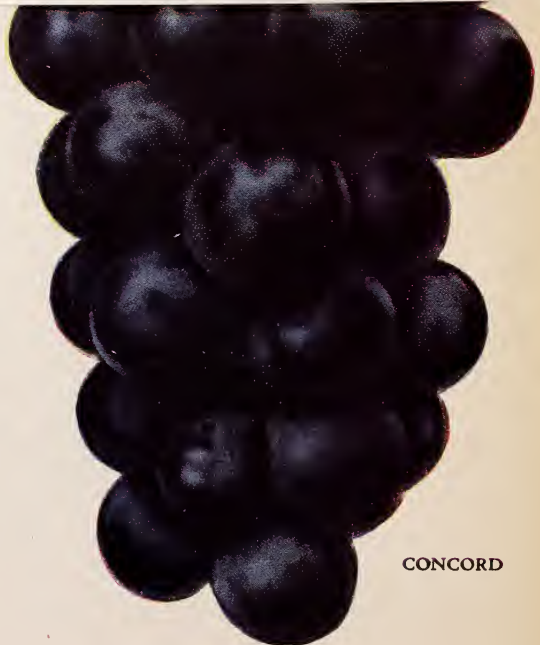
LOVETT HOME ARBOR SELECTION

- 2 Caco—(See page 61)
- 2 Moore's Early—(See page 63)
- 2 Concord—(Offered on page 61)
- 2 Diamond—(Described on this page)
- 2 Champagne—(Consult page 61)

LOVETT'S HOME ARBOR SELECTION OF GRAPE VINES

(See above)

2 strong, 2 year old vines of each of the 5 sorts for \$5.00, or 10 fruiting age vines (2 of each sort) for \$10.00. — — — —



CONCORD



MOORE'S
EARLY

Standard Varieties of Grapes (Continued)

Moore's Early—(See illustration of a typical bunch). A most reliable very early variety immensely profitable to commercial growers. Medium bunch, berry large, jet black with purple bloom. Ripens fully two weeks earlier than Concord. 2 years each, 35c; dozen, \$3.50; 100, \$15.00. Heavy fruiting vines, each, 75c; dozen, \$7.50.

Niagara—The most popular white Grape, and destined to become more highly valued as time passes. Cluster large and compact; berry large, amber-white with white bloom, thin-skinned, tender pulp, sweet and luscious. Ripens in mid-season with Concord. 2 years, each, 40c; dozen, \$4.00; 100, \$25.00. Heavy fruiting vines, each, \$1.00; dozen, \$10.00.

Ontario—A very early white Grape, produced by crossing Winchell with Diamond. Berries medium to small, roundish, juicy, tender, sweet and good in flavor. Superior in quality to Winchell and ripens slightly earlier. 2 year vines, each, \$1.50; dozen, \$15.00.

Portland—An exceptionally early white variety holding great promise for home use and nearby markets. Of exceptionally fine, sweet flavor, with large, individual berries, and clusters of good size. In the great Grape belt of Northern New York it ripens a week ahead of Moore's Early. A decided acquisition. 2 years, each, \$1.50; dozen, \$15.00.

Worden—Resembles Concord closely, but is of higher quality and ripens a week to ten days earlier. Both bunch and berry average larger than those of Concord. 2 years, each, 35c; dozen, \$3.50; 100, \$15.00. Heavy fruiting vines, each, \$1.00; dozen, \$10.00.



NIAGARA

Garden Roots

New Rust-Resisting Asparagus WASHINGTON

Because the variety Washington is unquestionably by far the best of all varieties of Asparagus, we have discontinued growing the other varieties which we have offered in former years. Outstanding characteristics are exceptional rust-resistance due to unusually vigorous constitution (secured by critical selection extending over ten years); extraordinary yielding qualities; large size of individual stalks, and their rapid development to cutting size, which rapid growth stands for tenderness. The shoots are straight, of dark green color, with a heavy purple overtone. They are always tight and do not open until well above the ground. 1 year, dozen, 50c; 100, \$1.50; 1000, \$12.00. 2 years, dozen, 75c; 100, \$2.50; 1000, \$20.00. Extra large, 3 years, dozen, \$1.50; 100, \$5.00.

CHIVES

Highly prized for soups and seasoning. The tops of grass-like leaves appear in early spring and can be cut repeatedly. Each, 20c; dozen, \$2.00; 100, \$12.00.

HOP

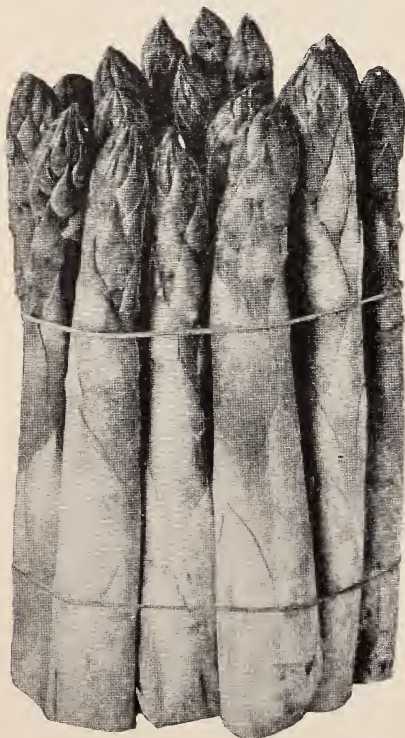
Golden Cluster—Bears large clusters of yellow-green hops in such profusion as to completely envelop the plant in late summer and early autumn. Of rapid growth with abundant, ornamental foliage. Each, 20c; doz., \$2.00; 100, \$12.00.

HORSERADISH

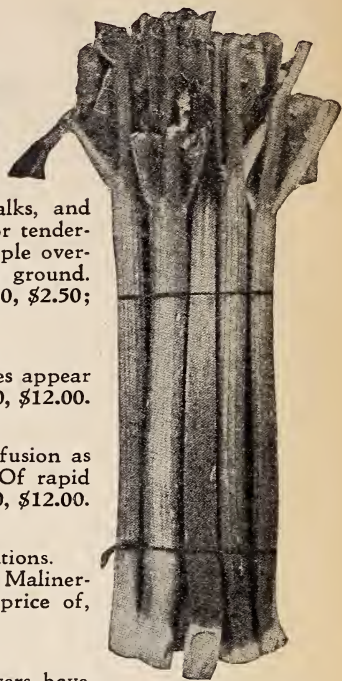
Does well in any garden soil, but succeeds best in rather damp locations. **English or Common**—There is so little difference between this and the Maliner-Kren, or Bohemian, that we will supply either kind at the uniform price of, dozen, 50c; 100, \$2.50; 1000, \$20.00.

LAVENDER (*Lavandula Vera*)

Sweet Lavender—The Lavender of our grandmother's gardens. Flowers have an agreeable odor, especially when cut and dried. Foliage is silvery-gray, while flowers are deep blue. Clumps, each, 30c; dozen, \$3.00. From pots, each, 20c; dozen, \$2.00.



WASHINGTON ASPARAGUS



MYATT'S LINNAEUS RHUBARB

MINT

Spearmint or Meadow Mint (*M. viridis*)—Largely used for culinary purposes. Each, 20c; dozen, \$2.00; 100, \$12.00.

Peppermint (*M. piperita*)—The green leaves and stems, when chewed and swallowed, have the same effect as the essential oil. Each, 20c; dozen, \$2.00; 100, \$12.00.

RHUBARB (Pie Plant)

Sometimes termed Wine Plant. Plant in rows four feet apart and the roots three feet apart in the rows.

Victoria—The best variety for general use. Stems very large, tender, of delicate flavor. Yields abundantly and early in the season. Strong roots, each, 20c; dozen, \$2.00; 100, \$12.00.

SAGE

Holt's Mammoth—Plants become a foot or more in height and three feet in diameter. The leaves are held well up from the soil, are rich in flavor and of great substance. Perfectly hardy. Clumps, each, 25c; dozen, \$2.50; 100, \$15.00. From pots, each, 15c; dozen, \$1.50; 100, \$10.00.

THYME (*Thymus Vulgaris*)

Garden—Of dwarf habit, with exceedingly pretty foliage, formed in a dense mass. Much prized for seasoning and, of late, widely used as a ground cover, on flower garden walks and in rockery work. Clumps, each, 30c; dozen, \$3.00. From pots, each, 20c; dozen, \$2.00; 100, \$15.00.

TARAGON OR ESTRAGON (*Artemisia Dracunculus*)

The leaves and young shoots are much prized as an ingredient in soups, salads, stews, pickles, etc. Equally useful fresh or cut and dried. Clumps, each, 35c; dozen, \$3.50. From pots, each, 25c; dozen, \$2.50; 100, \$15.00.



INDEX



| | Page | | Page |
|-----------------------------------|--------|-------------------------------------|--------|
| Apples | 48, 49 | Peaches | 51 |
| Asparagus Roots | 64 | Pears | 50 |
| Azalea, Hardy | 34, 35 | Peonies | 25-27 |
| Barberry | 45, 46 | Perennials, Hardy Flowers | 14-30 |
| Blackberries | 56, 57 | Perennial Garden Plans | 13, 31 |
| Boxwood | 46 | Phlox | 27, 28 |
| Chives | 64 | Plums | 50 |
| Cherries | 52 | Privet | 44, 45 |
| Chrysanthemums, Hardy | 17, 18 | Quinces | 53 |
| Collection of Strawberry Plants | 59 | Raspberries | 54-56 |
| Crab Apples | 52 | Rhubarb | 64 |
| Currants | 57, 58 | Roses | 2-12 |
| Delphiniums | 19, 20 | Roses, Baby Ramblers | 11 |
| Dewberries | 57 | Roses, Climbing | 9-11 |
| Evergreens | 40-43 | Sage | 64 |
| Fruit Trees, Dwarf | 53 | Shrubs, Deciduous and Evergreen | 32-39 |
| Gooseberries | 58 | Strawberries | 58-60 |
| Grapes | 61-63 | Strawberry-Raspberry | 58 |
| Grapes—Collection for Home Garden | 62 | Tarragon | 64 |
| Hedge Plants | 44-46 | Thyme | 64 |
| Hopvines | 64 | Trees, Dwarf Apple | 53 |
| Horseradish Roots | 64 | Trees, Dwarf Flowering (see Shrubs) | 32-39 |
| Iris | 23, 24 | Trees, Dwarf Pear | 53 |
| Lavender, True | 64 | Trees, Evergreens | 40-43 |
| Lilies, Hardy | 24, 25 | Vines and Creepers, Hardy | 47 |
| Loganberries | 58 | Wineberries | 58 |
| Mint | 64 | | |

INFORMATION ABOUT PARCEL POST AND RATES OF POSTAGE

Maximum Weight: 70 lbs., in first, second and third zones; 50 lbs. in all other zones.

Size of Package cannot exceed a combined length and largest circumference of seven feet (84 inches).

Insurance Against Loss—5c pays up to \$5.00; 8c up to \$25.00; 10c up to \$50.00, and 25c up to \$100.00.

Canadian shipments up to 11 lbs. can go by parcel post. Inquire of your postmaster as to rates and add postage to order.

Please be sure to send enough money to pay postage, in addition to cost of plants ordered, when shipment is to be made by

mail. The surplus (if any) will be promptly returned when shipment is made. Postage on all shipments by mail must be prepaid. We cannot undertake to open accounts for postage. Express charges on Canadian shipments must also be prepaid.

RATES OF POSTAGE WITHIN U. S.

| | 1st pound or fraction | Each add. pound or fraction |
|------------------|--------------------------|--------------------------------|
| 1st and 2nd zone | 7c | 1c |
| 3d zone | 8c | 2c |
| 4th zone | 9c | 4c |
| 5th zone | 10c | 6c |
| 6th zone | 11c | 8c |
| 7th zone | 13c | 10c |
| 8th zone | 14c | 12c |

WEIGHT WHEN PACKED

Asparagus, 1 yr., doz., 8 oz.; 100, 3½ lbs.
 Asparagus, 2 yrs., doz., 1½ lbs.; 100, 12 lbs.
 Blackberries, doz., 1½ lbs.; 100, 8 lbs.
 Blackberries, transplanted, doz., 2½ lbs.; 100, 20 lbs.
 Chives, doz., 12 ozs.
 Currants, 1 yr., doz., 2 lbs.; 100, 15 lbs.
 Currants, 2 yrs., doz., 2½ lbs.; 100, 20 lbs.
 Dahlias, doz., 4 lbs.
 Dewberries, doz., 1 lb.; 100, 5 lbs.
 Dewberries, trans., doz., 2 lbs.; 100, 12 lbs.
 Gladiolus, doz., 1 lb.
 Gooseberries, 1 yr., doz., 2¼ lbs.; 100, 18 lbs.
 Gooseberries, 2 yrs., doz., 2½ lbs.; 100, 20 lbs.
 Grapes, 1 yr., doz., 2 lbs.; 100, 15 lbs.
 Grapes, 2 yrs., doz., 3 lbs.; 100, 25 lbs.
 Grapes, fruiting age, each, 3 lbs.; doz., 30 lbs.

Hardy Shrubs, doz., 10 lbs.
 Hops, doz., 3 lbs.
 Horseradish, doz., 14 oz.; 100, 5 lbs.
 Iris, doz., 4 lbs.; 100, 30 lbs.
 Loganberries. Same as Raspberries.
 Perennials, doz., 3½ lbs.
 Peonies, doz., 6 lbs.; 100, 48 lbs.
 Privet, small, doz., 2 lbs.; 100, 12 lbs.
 Raspberries, Wineberries, doz., 1 lb.; 100, 6 lbs.
 Raspberries, trans., doz., 2 lbs.; 100, 12 lbs.
 Rhubarb, doz., 1½ lbs.; 100, 10 lbs.
 Roses, from field, doz., 4 lbs.
 Roses, from 5-in pots, each, 2 lbs.; doz., 20 lbs.
 Strawberries, doz., 10 ozs.; 100, 3½ lbs.
 Strawberries, pot-grown, doz., 3 lbs.; 100, 24 lbs.
 Strawberry-Raspberry, doz., 12 ozs.
 Vines and Creepers, doz., 6 lbs.

1878



1928

Lovett's NURSERY

*Golden Opportunity,
for those who seek better
Fruits and Flowers*