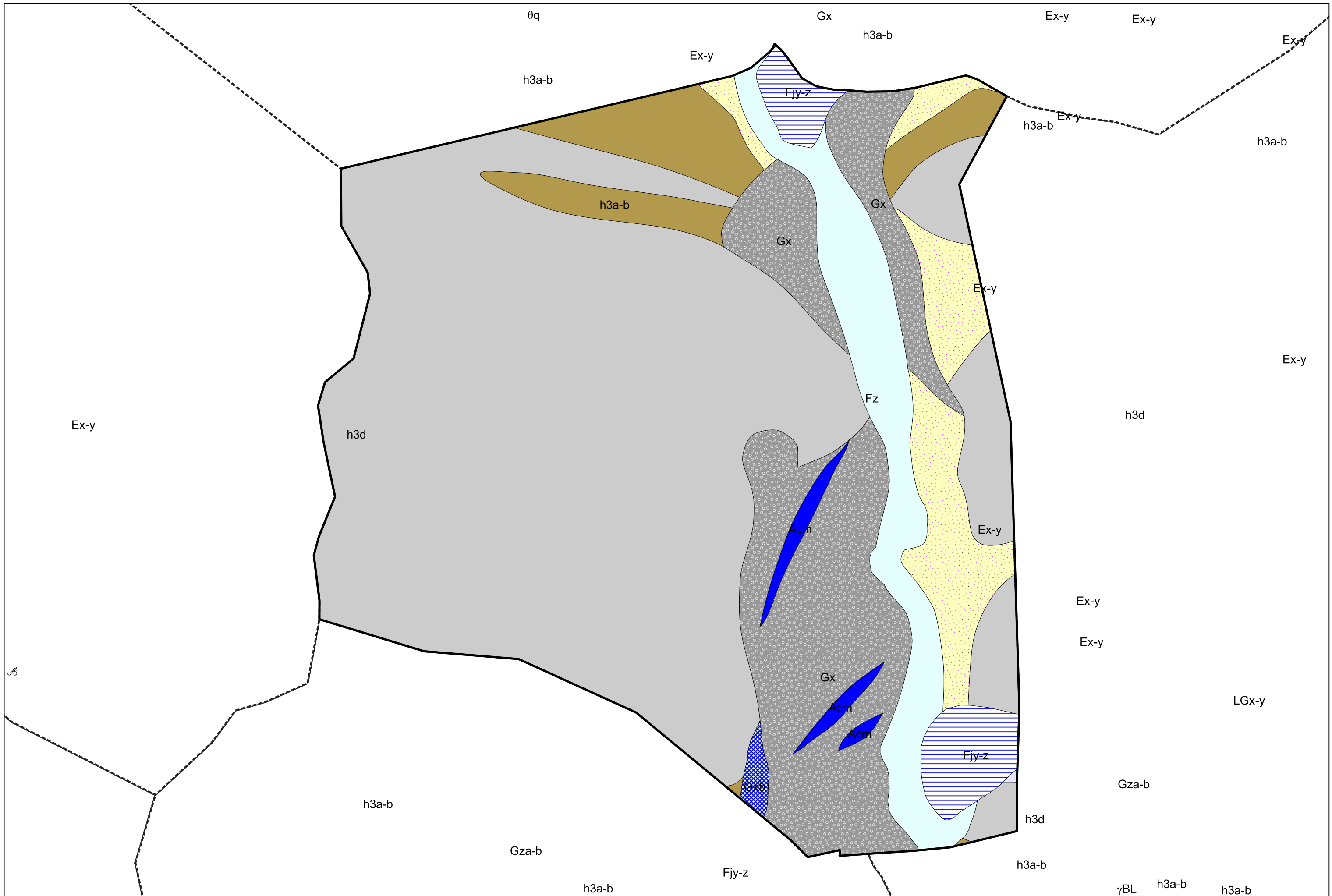


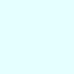








Carte géologique des sols de la commune de Avajan



Légende la la carte géologique de la commune de Avajan

-  Ex-y, Eboulis fixés - 4
-  Fjy-z, Cônes de déjections tardi et postglaciaires - 8
-  Fz, Alluvions fluviales actuelles et subactuelles - 13
-  Acm, Arcs et cordons morainiques du Tardiglaciaire et du Postglaciaire - 23
-  Gza-b, Moraines du Tardiglaciaire et du Postglaciaire ancien non différenciés - 29
-  Gx, Moraines du stade d'extension glaciaire maximum - 33
-  Gxb, Phase de stationnement - 36
-  h3d, Namurien : Calcaires, schistes, grès, conglomérats - 169
-  h3a-b, Namurien : Pélites vertes et noires, grès - 171

