

## **Historic, Archive Document**

Do not assume content reflects current scientific knowledge, policies, or practices.

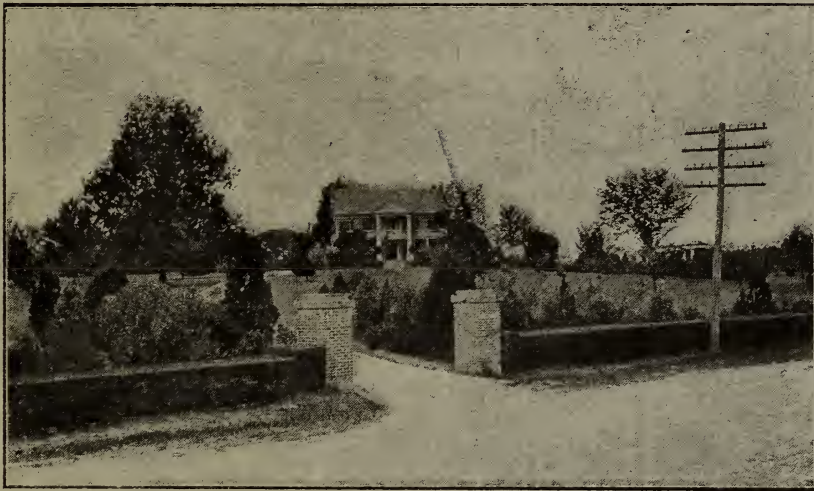


62,19

1917?

FEB 17 1917

ASHFORD PARK  
NURSERIES



**ASHFORD PARK STATION**

*Peachtree Road and Southern Railway*

**OFFICE: 802 GRANT BUILDING, ATLANTA, GA.**

*Ivy 339-J ————— Telephones ————— Ivy 4631*



FEB 17 1917

ASHFORD PARK  
NURSERIES



*ASHFORD PARK STATION*  
*Peachtree Road and Southern Railway*

---

*OFFICE: 802 GRANT BUILDING, ATLANTA, GA.*

*Ivy 339-J ————— Telephones ————— Ivy 4631*



FOOTE &  
DAVIES CO.  
PRINTERS  
AND BINDERS

ATLANTA

# Ashford Park Nurseries

## PRICE LIST

*A small extra charge is made  
when Conifers are shipped  
with ball and burlap*

*Our Descriptive Catalog will  
be sent upon request*

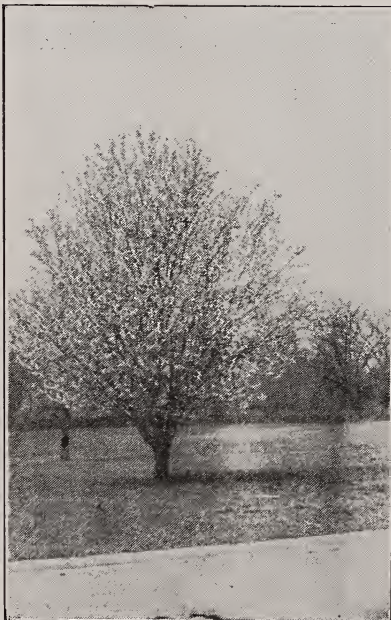
### SHADE AND ORNAMENTAL TREES

Aralia (Aralia Spinoza) 3-5 ft.....\$	.50	Dogwood, White (Cornus florida) 3-4 ft.	.35
Ash, White (Fraxinus Americana) 4-6 ft.	.35	4-5 ft.	.60
	6-8 ft.	5-6 ft.	.75
Beech (Fagus sylvatica) 5-6 ft.....	.50	Dogwood, Red Flowering (Cornus florida rubra) 2-3 ft.....	.50
Birch, White (Betula populifolia) 8-10 ft.	1.00	3-4 ft.....	.75
	10-12 ft.	Dogwood, Weeping (Cornus florida pendula) 5-7 ft. ....	1.00
Candle Berry Tree (Aleurites Fordii)		Elm, American (Ulmus Americana)	
	4-5 ft.	8-10 ft.	.75
Catalpa (Bungei) Standard 2-year heads	1.50	10-12 ft.	1.25
Catalpa (Speciosa) 6-8 ft. ....	.75	Empress Tree (Paulowna imperialis)	
Crab, Flowering (Malus coronaria) 3-4 ft.	.35		6-8 ft.
Bechtel's Flowering Crab (malus loensis) 3-4 ft. ....	.50		.75
Chinese Cedrella (Cedrella Sinensis)		Honey Tree (Hovenia dulcis) 6-8 ft....	.75
	8-10 ft.	8-10 ft....	1.00
Japan Chestnut (Castanea Japonica) 6-8 ft.	1.25	Hawthorne (Crataegus galli) 2-3 ft.....	.35
Cherry, Weeping (Prunus avium rosea pendula) 4-6 ft. ....	1.25	Judas Tree (Cercis Canadensis) 3-4 ft... 4-6 ft...	.50 .75
Cherry, Flowering (Cerasus avium) fl. pl. 4-5 ft. ....	.50	Japan Judas (Cercis Japonica) 2-3 ft....	.35
China Tree (Melia azederach) 6-8 ft....	.75	Kentucky Coffee Tree (Gymnocladus Canadensis) 4-5 ft. ....	.50
Umbrella China (Melia azederach umbraculaformis) 3-4 ft.....	.35	Linden European (Tilia platyphyllos)	
4-5 ft.....	.50		6-8 ft.
5-6 ft.....	.75		50
Cut Leaf China (Umbrella form) 6-8 ft.	1.50	Maple, Silver (Acer dasycarpum) 8-10 ft.	.75
		10-12 ft.	1.00
		12-14 ft.	1.50
		Maple, Cut Leaf (Acer Wierii) 8-10 ft...	1.25
		10-12 ft...	1.75
		12-14 ft...	2.50

Maple, Sugar ( <i>Acer saccharum</i> )	8-10 ft...	1.50
	10-12 ft...	1.50
Maple, Norway ( <i>Acer platanoides</i> )	8-10 ft.	1.00
	10-12 ft.	1.50
Maple, Ash-Leaf ( <i>Acer Negundo</i> )	8-10 ft.	.75
Maple, Japanese, in variety,	18-24 in....	1.25
	24-36 in....	2.00
Mimosa Tree ( <i>Acacia nemu</i> )	4-6 ft.....	.75
	6-8 ft.....	1.00
Mulberry, Tea's Weeping ( <i>Morus alba</i> pendula)	4-6 ft. 1 yr. heads.....	1.00
	6-8 ft. 2 yr. heads.....	1.50
Magnolia ( <i>Grandiflora</i> )	3-4 ft.....	1.00
	4-6 ft.....	1.50
Magnolia ( <i>Acuminata</i> )	6-8 ft. ....	.75
Magnolia ( <i>Tripetala</i> )	8-10 ft.....	1.25
Magnolia, Pink ( <i>Sulangeana</i> )	2-3 ft....	1.50
Magnolia, White ( <i>Alba superba</i> )	2-3 ft..	1.50
Magnolia, Purple ( <i>purpurea</i> )	2-3 ft.....	1.50
Magnolia, Hall's White ( <i>stellata</i> )	2-3 ft.	1.50
Oak, Water ( <i>Quercus acquat.ica</i> )	6-8 ft.	.75
	8-10 ft.	1.25
	10-12 ft.	1.50
Chestnut Oak ( <i>Quercus primus</i> )	6-8 ft....	.75
Pin Oak ( <i>Quercus palustris</i> )	6-8 ft....	1.00
	8-10 ft....	1.50
Live Oak ( <i>Quercus Darlington</i> )	4-6 ft..	1.00
	6-8 ft..	1.50
	8-10 ft..	2.00
Flowering Peach ( <i>Persica vul. fl. pl.</i> )		
White, Pink, Red,	3-4 ft.....	.50
Purple Leaf Plum ( <i>Prunus pissardi</i> )	4-6 ft. ....	.50
Poplar, Carolina ( <i>Populus-Caroliniensis</i> )	10-12 ft. ....	1.00
Chinese Poplar ( <i>Suaveoleus</i> )	6-8 ft. ...	.50
Tulip Poplar ( <i>Liriodendron tulipifera</i> )	6-8 ft. ....	.75
Lombardy Poplar ( <i>Fastigiata</i> )		
	6- 8 ft. (low branched)	.25
	8-10 ft. (low branched)	.50
	10-12 ft. (low branched)	.75
Chinese Pistache ( <i>Pistacia Chinesis</i> )		
	3-4 ft., 50c; 6-8 ft.	1.25
Rain Tree ( <i>Koelreuteria paniculata</i> )		
	6-8 ft.	.75
	8-10 ft.	1.00
Sweet Gum ( <i>Liquidambar styraciflua</i> )		
	10-12 ft.	1.00
	12-14 ft.	1.25
Sycamore, Oriental ( <i>Platanus orientalis</i> )		
	6-8 ft.	.50
	8-10 ft.	.75
Sycamore, American ( <i>Platanus Americana</i> )		
	6-8 ft.	.50
	8-10 ft.	.75
Salisburyia ( <i>Maiden Hair Tree, Ginkgo biloba</i> )		
	6- 8 ft.....	.75
	8-10 ft.....	1.00
Sorrel Tree ( <i>Oxyendron arboreum</i> )	2-3 ft.	.35
Spondias <i>Axillaris</i> ( <i>Poupartia</i> )	3-4 ft..	.50
Varnish Tree ( <i>Sterculia plantanifolia</i> )		
	8-10 ft.	1.50
Weeping Willow ( <i>Salix Japonica pendula</i> )		
	6-8 ft.	1.00
Walnut, Black ( <i>Juglans nigra</i> )	6-8 ft....	.75
Japanese Walnut ( <i>Juglans cordiformis</i> )		
	6-8 ft.	.75
Yellow Wood ( <i>Cladrastis</i> )	8-10 ft.....	2.00

## CONIFEROUS EVERGREENS

Aborvitae, Chinese ( <i>Thuja orientalis</i> )		
	2 -2 ½ ft.	.50
	2 ½-3 ft.	.75
	3 -4 ft.	1.25
	4 -5 ft.	1.75
Aborvitae, Chinese (Dwarf, Compact Forms)		
	12-15 in.	.35
(See also Biota)		
	15-18 in.	.50
	18-24 in.	.75
	24-30 in.	1.00
	30-36 in.	1.50
Aborvitae, American ( <i>Thuja occidentalis</i> )		
	4-5 ft.	1.50
Trimmed to round shape,	3-4 ft.....	1.00
Aborvitae, Globe ( <i>T. occidentalis globosa</i> )		
	12-18 in.	1.25
	18-24 in.	1.75
	24-30 in.	2.50



PURPLE LEAF PLUM





**CHINESE ARBORVITAE**

<b>Aborvitae, Hovey's</b> ( <i>T. occidentalis</i> Hoveyii) 2-3 ft. ....	1.25
<b>Aborvitae, Lobb's</b> ( <i>T. occidentalis</i> Lobbii) 2-3 ft. ....	1.00
<b>Aborvitae, Reid's</b> ( <i>T. occidentalis</i> Reidii) 2-2½ ft. ....	1.50
<b>Biota, Compact</b> ( <i>T. orientalis compacta</i> )	
15-18 in. ....	.75
18-24 in. ....	1.00
24-30 in. ....	1.25
<b>Biota, Tall Golden</b> ( <i>T. orientalis aurea</i> conspicua) 2-2½ ft. ....	.75
3-4 ft. ....	1.75
4-5 ft. ....	2.25
<b>Biota, Dwarf Golden</b> ( <i>T. orientalis</i> aurea nana) 12-15 in. ....	.50
15-18 in. ....	.75
18-24 in. ....	1.00
<b>Cedar, Deodar</b> ( <i>Cedrus deodara</i> ) 2-3 ft. ..	1.50
3-4 ft. ..	2.50
<b>Japan Cedar</b> ( <i>Cryptomeria Japonica</i> ) 2-3 ft.	1.00
<b>Incense Cedar</b> ( <i>Libocedrus decurrens</i> )	
18-24 in. ....	1.00
<b>Blue Cedar</b> ( <i>Juniperus Virginiana glauca</i> )	
2-2½ ft. ....	1.00
<b>Red Cedar</b> ( <i>J. Virginiana</i> ) various sizes from 75c to .....	2.50
<b>Cypress, Lawson's</b> ( <i>Cupressus Lawsoni</i> )	
3-4 ft. ....	2.00
<b>Cypress, Lawson's Blue</b> ( <i>Cupressus</i> Lawsoni glauca) 18-24 in. ....	1.00
24-30 in. ....	1.50

<b>Cypress Italian</b> ( <i>C. Sempervirens</i> pyramidalis) 30-36 in. ....	.75
<b>Fir, Douglas</b> ( <i>Pseudotsuga Douglasi</i> ) sizes running 2 to 5 ft. \$1.00 to....	2.00
<b>Fir, Balsam</b> ( <i>Abies balsamia</i> ) 24-30 in. ..	1.00
30-36 in. ..	1.50
<b>Juniper, Irish</b> ( <i>Juniperus Hibernica</i> )	
30-36 in. ....	.50
36-42 in. ....	.75
<b>Juniper, Swedish</b> ( <i>J. Suecica</i> ) 2-3 ft. ....	.50
3-4 ft. ....	1.00
4-5 ft. ....	1.75
5-8 ft. ....	2.00
<b>Juniper, Chinese</b> ( <i>J. Sinensis</i> ) 18-24 in.	1.00
<b>Juniper, Nepaul</b> ( <i>J. oblonga</i> ) 24-30 in. ..	1.50
<b>Juniper, Prostrate</b> ( <i>J. Communis aurea</i> )	
2-3 ft. ....	2.00
<b>Juniper, Savin</b> ( <i>J. Sabina</i> ) 1½-2 ft. ....	.50
<b>Juniper, Scaly Leaf</b> ( <i>J. Squmata</i> ) 1½-2 ft.	1.00
<b>Juniper, Dark Green Chinese</b> ( <i>Chinensis</i> Pfitzeriana) 18-24 in. ....	1.25
<b>Juniper, English</b> ( <i>J. communis</i> ) 2-3 ft. ..	.50
3-4 ft. ....	1.00
4-5 ft. ....	1.50
5-8 ft. ....	2.00
<b>Hemlock, Canadian</b> ( <i>Tsuga Canadensis</i> )	
3-4 ft. ....	2.50
<b>Hemlock, Carolina</b> ( <i>Tsuga Caroliniana</i> )	
18-24 in. ....	1.50
<b>Pine, Austrian</b> ( <i>Pinus Austriaca</i> ) 3-4 ft.	1.50
4-5 ft. ....	2.50



**ITALIAN CYPRESS**

Pine Bhotan ( <i>Pinus excelsa</i> ) 2-3 ft. ....	1.50
Pine, White ( <i>Pinus strobus</i> ) 6-8 ft. ....	5.00
Pine, Scotch ( <i>Pinus sylvestris</i> ) 3-4 ft. ....	1.50
4-5 ft. ....	2.25
Pine, Mugho ( <i>Pinus mughus</i> ) .....	1.00
Retinospora ( <i>R. plumosa</i> ) 18-24 in. ....	.60
24-30 in. ....	.85
Retinospora, Broad and Compact speci-	
mens, 2½-3 ft. ....	1.25
3 -4 ft. ....	2.00
4 -5 ft. ....	3.00
5 -8 ft. ....	4.00
Retinospora ( <i>Pissifera</i> ) Broad and	
Compact 2 -2½ ft. ....	1.00
2½-3 ft. ....	1.50
3 -4 ft. ....	2.00
Retinospora ( <i>plumosa aurea</i> ) Broad and	
Compact 2 -2½ ft. ....	1.25
2½-3 ft. ....	1.50
3 -4 ft. ....	2.25
4 -5 ft. ....	3.25
Retinospora ( <i>Pissifera aurea</i> ) 2½-3 ft. .	1.25
3 -4 ft. .	1.75
4 -5 ft. .	2.25
5 -8 ft. .	3.00
Retinospora ( <i>R. Obtusa</i> ) Broad and	
Compact 2 -2½ ft. ....	1.25
2½-3 ft. ....	1.75
Retinospora ( <i>R. obtusa nana</i> ) 15-18 in. .	1.25
18-24 in. .	1.50



**SILVER CYPRESS**  
(*Retinospora squarosa*)

Retinospora ( <i>R. Squarosa Veitchii</i> )	
1½-2 ft. .	.75
2 -2½ ft. .	1.00
2½-3 ft. .	1.50
3 -4 ft. .	2.00
4 -5 ft. .	3.00
Spruce, Norway ( <i>Picea Excelsis</i> )	
1½-2 ft. .	.75
2 -2½ ft. .	1.00
3 -4 ft. .	2.00
4 -5 ft. .	3.00
Spruce, Koster's Blue ( <i>P. pungens</i>	
glauca, Kosteri) 1½-2 ft. ....	1.25
Spruce, Oriental ( <i>P. Orientalis</i> ) 2-2½ ft. .	2.50
Yew, Korean ( <i>Cepholataxus ped. fas.</i> )	
1½-2 ft. .	.75
2 -2½ ft. .	1.00
Yew, Japanese ( <i>Taxus cusp. brev.</i> )	
2-2½ ft. .	1.75
Yew, Fortune's ( <i>Cepholataxus Fortunii</i> )	
2-2½ ft. .	1.00
Yew, Dwarf ( <i>Cepholataxus drupacea</i> )	
15-18 in. .	.75

## BROAD LEAF EVERGREENS

Abelia ( <i>Abelia grandiflora</i> ) 2-3 ft. ....	.50
3-4 ft. ....	.75
Anise Tree ( <i>Illicium anisatum</i> ) 2½-3 ft	1.00
Azalea ( <i>Azalea Hindodegira</i> ) 12-18 in. .	1.50
Banana Shrub ( <i>Magnolia fuscata</i> ) 2-2½ ft. .	1.50
Boxwood ( <i>Buxus sempivirens</i> ) 6-12 in.	
per 100 .....	6.00
Compact with bushy specimens, includ-	
ing those trimmed square to form	
dwarf hedge 8-12 in. ....	.25
12-15 in. ....	.35
15-18 in. ....	.45
Specimens trimmed to Egg, Pyramid,	
Cone or other formal shapes 8-12 in. .	.40
12-15 in. .	.50
15-18 in. .	.75
18-21 in. .	1.00
21-24 in. .	1.50
24-42 in. \$1.50 to	5.00
Barberry, Evergreen ( <i>Beberis illicifolia</i> )	
2-3 ft. .	1.00
Scotch Broom ( <i>Cytisus scoparius</i> ) 2-3 ft. .	.35
3-4 ft. .	.50
Cherry, Carolina Evergreen ( <i>Prunus</i>	
Caroliniensis) 2-2½ ft. ....	.50
Cleyera ( <i>Cleyera Japonica</i> ) 12-18 in. . . .	1.00
Cape Jasmine ( <i>Gardenia Florida</i> ) 12-18 in. .	.50
18-24 in. .	1.00
Coteneaster ( <i>Coteneaster buxifolia</i> )	
18-24 in. .	.35

<b>Camphor Tree</b> ( <i>Cinnamomum</i> )	2-2½ ft.	.50	<b>Oleaster</b> ( <i>Eleagnus pungens variegata</i> )	18-24 in.	1.00
	3-4 ft.	.75			
<b>Euonymous</b> ( <i>Euonymous Japonica</i> )	2-2½ ft.	.35	<b>Oleaster</b> ( <i>Eleagnus Simoni</i> )	18-24 in.....	1.00
				24-30 in.....	1.50
<b>Euonymous</b> ( <i>E. Japonica aurea variegata</i> )			<b>Olive, Fragrant</b> ( <i>Osmanthus fragrans</i> )	12-18 in.	.75
	18-24 in.	.35			
	24-30 in.	.50	<b>Olive, Holly-Leaf</b> ( <i>Osmanthus aquifolium</i> )	15-18 in.	.75
<b>Euonymous, Small Leaf</b> ( <i>E. Microphyllum</i> )				18-24 in.	1.00
3-year .....		.25	<b>Privet, Amoor River</b> ( <i>Ligustrum Amurense</i> )		
<b>Hawthorne, Evergreen</b> ( <i>Pyrocantha coccinea</i> )	2-3 ft.....	.75	<b>Privet, for Hedges, 2-year</b>	1-2 ft. per 100	3.00
	3-4 ft.....	1.00		1-2 ft. per 1000	25.00
<b>Scotch Heather</b> ( <i>Calluna vulgaris</i> )	2-3 ft.	.25		For individual plants, 3-5 ft., each....	.20



### LAURELS

<b>Holly, Japanese</b> ( <i>Ilex crenata</i> )	18-24 in.	1.00	<b>Privet, Specimen Plants, trimmed to Pyramid, Cone or other forms, according to height,</b>	\$1.00 to.....	2.50
<b>Holly, American</b> ( <i>Ilex opaca</i> ), various sizes,	2 ft. to 5 ft.	\$1.00 to.....	2.50		
<b>Holly, American</b> ( <i>Ilex opaca</i> ), Specimens, with Berries,	\$2.00 to.....	5.00	<b>Privet, Specimen Plants, trimmed to Standard Bay Tree form,</b>	3-4 ft.....	2.00
<b>Ink Berry</b> ( <i>Ilex glaba</i> )	18-24 in.....	.75		4-5 ft.....	2.50
<b>Laurustinus</b> ( <i>Viburnum tinus</i> )	18-24 in.	1.50		5-6 ft.....	3.50
<b>Laurel, English</b> ( <i>Lauruscerasus shipkaensis</i> )	15-18 in.....	.50	<b>Privet, Japanese</b> ( <i>Ligustrum Japonicum</i> )	2-3 ft.	.50
	18-24 in.....	1.00		3-4 ft.	.75
<b>Laurel, Mountain</b> ( <i>Kalmia latifolia</i> )	18-24 in.	.75		4-5 ft.	1.25
<b>Oak, Live or Evergreen</b> ( <i>Quercus sempervirens</i> )	4- 6 ft.....	1.00	<b>Privet, Japanese</b> ( <i>Ligustrum lucidum</i> )	15-18 in.	.50
	6- 8 ft.....	1.50		24-30 in.	1.00
	8-10 ft.....	2.00	<b>Privet, Japanese</b> ( <i>Ligustrum excelsum superbum</i> )	18-24 in.....	.50
<b>Oleaster</b> ( <i>Eleagnus reflexa</i> )	3-4 ft.....	1.00		3- 4 ft.....	2.00
	4-5 ft.....	1.50	<b>Privet, Japanese</b> ( <i>Ligustrum marginatum aureum</i> )	18-24 in.....	.50
<b>Oleaster</b> ( <i>Eleagnus macrophylla</i> )	18-24 in.	1.25		3-4 ft.....	2.00
<b>Oleaster</b> ( <i>Eleagnus aurea variegata</i> )	18-24 in.	1.00			
	24-30 in.	1.50			

Privet, Ashford's Box Leaf ( <i>Ligustrum buxifolia</i> )	
For Hedges, 12-24 in., per 100.....	5.00
per 1000.....	40.00
Privet, Ashford's Specimen Plants, trimmed in Pyramid, Globe, Cone and other forms	
12-15 in.....	.75
15-18 in.....	1.00
18-24 in.....	1.50
Other sizes, up to	7.50
Photinia ( <i>Photinia serrulata</i> )	2-3 ft.... 1.00
Pieris, or Andromeda ( <i>Andromeda floribunda</i> )	12-18 in. .... 1.00
Rhododendron ( <i>R. Maximum</i> )	18-24 in. 1.00
Rhododendron ( <i>R. Maximum</i> ), named varieties	18-24 in. .... 1.50
Rhododendron ( <i>R. punctatum</i> )	18-24 in. .50
Strawberry Bush ( <i>Arbutus unedo</i> )	12-18 in. 1.00
Tea Plant ( <i>Thea Bohea</i> )	18-24 in..... 1.00
24-30 in.....	1.50
Tobira ( <i>Pittosporum Tobira</i> )	18-24 in... 1.00
Yucca ( <i>Y. treculeana</i> ), Strong Plants, various ages, 75c to.....	2.00
Yucca ( <i>Y. aloifolia</i> ), Strong Plants, various ages, 25c to.....	.75

## HARDY ORNAMENTAL SHRUBS

Almond, Flowering ( <i>Prunus Japonica</i> )	
(Pink and White) 2-3 ft.....	.50
Althea ( <i>Hibiscus Syriacus</i> ), all colors,	
Double and Single 2-3 ft.....	.25
3-4 ft.....	.35
Althea, Trimmed to Standard form	4-5 ft. .75
Althea ( <i>H. Meehanii</i> ), Variegated Leaf	
2-3 ft. .25	
3-4 ft. .35	
Arrow Wood ( <i>Viburnum detatum</i> )	2-3 ft. .25
3-4 ft. .35	
Azalea, Native Azaleas in various colors	.25
Barberry, Japanese ( <i>Berberis Thunbergii</i> )	
1 -1½ ft. .20	
1½-2 ft. .25	
2 -3 ft. .35	
Barberry, Purple Leaf ( <i>Berberis atropurpurea</i> )	2-3 ft. .... 35
Bladder Senna ( <i>Colutea arborescens</i> )	3-4 ft. .35
Buddleia ( <i>Lindleana</i> )	3-4 ft..... .35
4-5 ft.....	.50
Buddleia ( <i>Variabilis Veitchiana</i> )	2-3 ft. .35
Cassia ( <i>Floribunda</i> )	3-4 ft..... .50
Winter Choke Berry ( <i>Pyrus arbutifolia</i> )	2-3 ft. .25

Crape Myrtle ( <i>Lagerstroemia Indica</i> ),	
All colors 1½-2 ft.....	.25
2 -3 ft.....	.35
3 -4 ft. .50 and .....	.75
Chaste Tree ( <i>Vitex agnus castus</i> )	2-3 ft. .25
3-4 ft. .35	
Japan Clover ( <i>Lespedeza Japonica</i> )	2-3 ft. .25
3-4 ft. .35	
Coral Berry ( <i>Symphocarpus vulgaris</i> )	
1½-2 ft. .25	
2 -3 ft. .35	
Cranberry High Bush ( <i>Viburnum opulis</i> )	2-3 ft. .35
Flowering Currant ( <i>Ribes aureum</i> )	2-4 ft. .35
Deutzia ( <i>D. crenata</i> ), White and Red	
2-3 ft. .25	
3-4 ft. .35	
4-5 ft. .50	
Lemoine's Deutzia ( <i>D. Lemoinei</i> )	1½-2 ft. .25
2 -3 ft. .35	
Pink Dutzia ( <i>D. Gracilis rosea</i> )	2-3 ft. .35
Deutzia, Pride of Rochester	2-3 ft..... .25
3-4 ft.....	.35
4-5 ft.....	.50



**BUDDLEIA**  
(Butterfly Bush)

Dogwood ( <i>Cornus sanguinea</i> ) 2-3 ft. ....	.35	Kerria, Japan Rose ( <i>Kerria Japonica</i> fl. pl.) 3-4 ft. ....	.25
Dogwood ( <i>Cornus Siberica</i> ), Red Twigged) 1½-2 ft. ....	.25	Kerria, White ( <i>Rhodotypus kerriodes</i> ) 2-3 ft. ....	.25
2-3 ft. ....	.35	3-4 ft. ....	.35
French Mulberry ( <i>Calicarpia purpurea</i> ) 2-3 ft. ....	.35	Lilac ( <i>Syringa vulgaris</i> ), Purple or White 2-3 ft. ....	.35
3-4 ft. ....	.50	Lilac, Persian ( <i>Syringea Persica</i> ) 2-3 ft. ...	.35
French Mulberry ( <i>Calicarpia alba</i> ) 3-4 ft. ....	.50	Mock Orange ( <i>Philadelphus</i> ), in variety 3-4 ft. ....	.30
Golden Bell ( <i>Forsythia Fortunei</i> ) 3-4 ft. ....	.35	4-5 ft. ....	.30
4-5 ft. ....	.50	Nanny Berry ( <i>Viburnum lentago</i> ) 1½-2 ft. ....	.35
Golden Bell ( <i>F. viridisima</i> ) 2-3 ft. ....	.25	Opulasta ( <i>Physocarpus opulifolia</i> ) 2-3 ft. ....	.35
Honeysuckle, Upright Bush ( <i>Lonicera fragrantissima</i> ) 3-4 ft. ....	.35	4-5 ft. ....	.35
4-5 ft. ....	.50	Pearl Bush ( <i>Exochordia grandiflora</i> ) 3-4 ft. ....	.35
Japan Honeysuckle, Bush ( <i>Lonicera Morrowi</i> ) 2-3 ft. ....	.25	Flowering Pomegranate ( <i>Punica granatus</i> ) 3-4 ft. ....	.35
Tartarian Honeysuckle ( <i>Lonicera Tartarica</i> ) 3-4 ft. ....	.35	California Privet ( <i>Ligustrum Ovalifolium</i> ) Bush form 3-4 ft. ....	.25
4-5 ft. ....	.50		



#### DEUTZIA

Purple Hazel ( <i>Corylus atrpurpureum</i> ) 1½-2 ft. ....	.25	Variegated Privet ( <i>Ligustrum variegata</i> ) Bush Form, 4-5 ft. ....	.50
Holly, Deciduous ( <i>Ilex verticillata</i> ) 3-4 ft. ....	.50	Ibota Privet ( <i>Ligustrum Ibota</i> ) Bush Form, 3-4 ft. ....	.25
Horse Chestnut, Dwarf ( <i>Aesculus poviiflora</i> ) 1½-2 ft. ....	.35	Japan Quince ( <i>Cydonia Japonica</i> ) 2-3 ft. ....	.25
Hydrangia, Hardy ( <i>Hydrangia paniculata grandiflora</i> ) 2-3 ft. ....	.30	Russian Olive ( <i>Elaeagnus Longipes</i> ) 3-4 ft. ....	.35
Hydrangia, Hills of Snow ( <i>H. aborescens</i> ster.) 1½-2 ft. ....	.25	Rosemary ( <i>Rosemarinus officinalis</i> ) 1½-2 ft. ....	.35
2-3 ft. ....	.35	Rose Acacia ( <i>Robinia hispida</i> ) 2-3 ft. ...	.25
Indigo, False ( <i>Amorpha fruticosa</i> ) 3-4 ft. ....	.35	Smoke Tree ( <i>Rhus cotinus</i> ) 3-4 ft. ....	.35
Jasmine ( <i>Jasminum revolutum</i> ) 2-3 ft. ...	.25	Sweet Shrub ( <i>Calycanthus Floridus</i> ) 2-3 ft. ....	.25
Jersey Tea ( <i>Ceanothus Americana</i> ) 2-3 ft. ....	.35	Sweet Shrub ( <i>Calycanthus Praecox</i> ), Oriental Sweet Shrub 1½-2 ft. ....	.25
Jersey Tea, Blue ( <i>Ceanothus Gloire de Versailles</i> ) 1½-2½ ft. ....	.50	Sweet Pepper Bush ( <i>Clethra alnifolia</i> ) 1½-2 ft. ....	.35



**LILAC**

<b>Snowberry</b> ( <i>Symphocarpus racemosus</i> ), White and Red 2-3 ft.....	.35
<b>Snowball</b> ( <i>Viburnum opulus</i> ) 3-4 ft.....	.35
<b>Japan Snowball</b> ( <i>Viburnum tomentosum</i> ) 2-3 ft.	.35
3-4 ft.	.50
<b>St. John's Wort</b> ( <i>Hypericum</i> ) 2-year....	.25
<b>Stephandra</b> ( <i>S. flexuosa</i> ) 2-3 ft.....	.25
3-4 ft.....	.35
<b>Spirea</b> ( <i>Spirea prunifolia</i> ) Bridal Wreath 2-3 ft.	.20
3-4 ft.	.25
4-5 ft.	.35
<b>Spirea</b> ( <i>S. Thunbergii</i> ) Snow Garland 1 1/2-2 ft.	.25
2 -2 1/2 ft.	.35
1 -1 1/2 ft.	.20
<b>Spirea</b> ( <i>Arguta</i> ) 2 1/2-3 ft. ....	.50
<b>Spirea</b> ( <i>S. Anthony Waterii</i> ) Crimson 15-18 in.	.25
1 1/2-2 ft.	.35
<b>Spirea</b> ( <i>S. Billardii</i> ) 3-4 ft.....	.30
<b>Spirea</b> ( <i>S. Reevesiana</i> ) Reeves' Spirea 2-3 ft.	.35
<b>Spirea</b> ( <i>S. Douglasii</i> ) 2-3 ft.....	.35

<b>Spirea</b> ( <i>S. Van Houttei</i> ) Weeping Bridal Wreath 3-4 ft.....	.25
4-5 ft.....	.35
<b>Spirea</b> ( <i>S. alba</i> ) Dwarf White Spirea 3-4 ft.	.30
<b>Spirea</b> ( <i>Caryopteris mastacathus</i> ) Blue Spirea 1 1/2-2 ft. ....	.35
<b>Tamarix</b> ( <i>T. Africana</i> ) 4-5 ft.....	.35
<b>Trifoliate Orange</b> ( <i>Citrus trifoliata</i> ) Hardy Orange, 8 to 15 in., \$5.00 per 100, 3-4 ft., each .....	.25
<b>White Fringe</b> ( <i>Chionanthus Virginica</i> ) 2-3 ft.	.35
<b>Witch Hazel</b> ( <i>Hammamelis Virginiana</i> ) 4-5 ft.	.50
<b>Weigela</b> ( <i>Diervilla Eva Rathke</i> ) Red 2-3 ft.	.30
3-4 ft.	.40
<b>Weigela</b> ( <i>D. Candida</i> ) White 2-3 ft.....	.30
3-4 ft.....	.40
<b>Weigela</b> ( <i>D. variegata</i> ) Variegated 2-3 ft.	.30
3-4 ft.	.40
<b>Weigela</b> ( <i>D. Gustav Mallet</i> ) Pink 2-3 ft.	.30
3-4 ft.	.40
<b>Flowering Willow</b> ( <i>Chilopsis liearis</i> ) 4-5 ft.	.50
<b>Withe-Rod</b> ( <i>Viburnum cassinoides</i> ) 2-3 ft.	.35

**HARDY VINES**

<b>Akebia</b> ( <i>A. Quinata</i> ) 2-year.....	.25
<b>Bignonia, Trumpet Vine</b> ( <i>B. capreolata</i> ) Strong Clumps .....	.35
<b>Clematis, White</b> ( <i>C. paniculata</i> ) Strong Clumps, 25c and.....	.50
<b>Clematis, Purple, Violet and Cream</b> Large Flowered .....	.50
<b>Euonymous, Climbing</b> ( <i>E. radicans</i> ) Strong Clumps .....	.35
<b>Euonymous, Variegated</b> ( <i>E. radicans</i> variegata) Strong Clumps.....	.35
<b>Honeysuckle, Japanese</b> ( <i>Lonicera Japonica</i> ) Strong Clumps .....	.35
<b>Honeysuckle, Golden</b> ( <i>L. reticulata aurea</i> ) Strong clumps .....	.35
<b>Boston Ivy</b> ( <i>Ampelopsis triacspidata</i> ) Strong Plants .....	.25
<b>English Ivy</b> ( <i>Hedera Helix</i> ) Strong Plants	.25
<b>Jasmine</b> ( <i>Jasminum officinale</i> ) Star Strong Plants, 25c and.....	.50
<b>Kadsura</b> ( <i>K. Japonica</i> ) Strong Plants...	.50
<b>Kudzu</b> ( <i>Pueraria Thunbergii</i> ) Strong Plants, 20c and .....	.25
<b>Jasmine</b> ( <i>J. nudiflora</i> ) Strong Plants....	.25

Jasmine ( <i>Jasminum sempervirens</i> ) Yellow Strong Plants .....	.25
Jasmine, Malyan ( <i>Rhynchospermum</i> <i>Jasminoides</i> ) Strong .....	.50
Matrimony Vine ( <i>Lycium Sinensis</i> ) Strong Plants .....	.35
Roses, a variety of Climbing Roses of the best sorts .....	.25
Periwinkle ( <i>Vinea minor</i> ) Strong Plants	.15
Trumpet Vine ( <i>Tecoma grandiflora</i> ) Strong Plants .....	.25
Virginia Creeper ( <i>Ampelopsis quinque-</i> <i>folia</i> ) Strong Plants .....	.20
Wistaria, Blue ( <i>Wistaria Sinensis</i> ) Strong Plants .....	.35
Wistaria, White ( <i>W. Sinensis alba</i> ) Strong Plants .....	.35
Wistaria, Japanese Purple ( <i>W. multijuga</i> ) Strong Plants .....	.35
Woodbine, Scarlet, Strong Plants .....	.35
Wodbine, Pink, Strong Plants .....	.35

## ORNAMENTAL GRASSES

Giant Reed ( <i>Arundo donax variegata</i> ) Strong Roots .....	.25
Japanese Bamboo ( <i>Bambusa aurea</i> ) Strong Roots .....	.50
Eulalia, Various Colors and Stripes, Strong Roots, 25c, 50c, \$1.00 and	2.00
Pampas Grass ( <i>Gynerium</i> ) White and Pink, Strong Roots, 25c, 50c, \$1.00 and	2.00

## ROSES

A Large Variety of Field Grown Roses of the best sorts, each .....	.25
---	-----

## HARDY PERENNIALS

Aster, Many Colors.
Blazing Star ( <i>Liatris</i> ).
Bell Flower, Japan ( <i>Platycodon</i> ).
Cardinal Flower ( <i>Lobelia card'n</i> ).
Canterbury Bells ( <i>Campanula</i> ).
Columbine ( <i>Aquilegia</i> ).
Coreopsis.
Candytuft ( <i>Iberis</i> ).
Chrysanthemum.
Flame Flower ( <i>Tritoma</i> ).
Fox Glove ( <i>Digitalis</i> ).
Golden Glow ( <i>Rudbeckia</i> ).
Hollyhocks, many colors.
Iris, German.
Iris, Japan.
Larkspur ( <i>Delphinium</i> ).
Lilies ( <i>Lilium</i> ), many colors.
Lilies ( <i>Hemorocallis</i> ).
Mallow ( <i>Meehan Mallow marvels</i> ).
Pinks.
Phlox, many colors.
Peonies, large variety.
Poppies, many colors.
Salvia.
Shasta Daisy.
Stokesia.
Veronica.

The above are the more common plants of this class. We have many other desirable ones. We sell all at 15c each, except the Peonies, some of which run much higher.



ROSE HEDGE

## FRUITS, BERRIES, NUTS

We carry a carefully selected line, all suited to this section, in Apples, Peaches, Pears, Plums, Cherries, Japan Persimmons and Figs. The prices run from 15c to 25c, according to quality and size. Grapes, Blackberries and Raspberries are 10c each. By 100 or 1000 much cheaper. Japan Chestnuts, 50c; Japan Walnuts, 50c; Pecans (budded or grafted only) , \$1.00 to \$1.50 each.

## HEDGES

We sell many kinds of plants for Hedges, each adapted to special wants. For general purposes, nothing compares with Amoor River Privet. For a low, slow growing hedge, Box is best. For defensive purposes, Citrus Trifoliata is recommended. For a decorative hedge, Abelia grandiflora, Barberry and some of the Roses are excellent.

NOTE: In the foregoing list we make no attempt to name all the sizes which we carry in the different plants, but only the usual catalogue

sizes. In most cases, we can furnish larger or smaller sizes at proportionate prices. In most cases also, we can furnish a quantity of any plant at a substantial discount on the prices named herein.

A list of your wants with size and number of each plant will be returned to you promptly with our lowest prices on each item.

## TERMS AND CONDITIONS

Our terms are cash with order, except to persons known to us, or those who furnish us satisfactory reference. To these we allow thirty days time. We ship by express unless otherwise ordered. The usual charges are made for boxing and packing.

Our stock is all packed by experienced hands, carefully, as suits the requirements of each kind. Should we make an error in the kind or number of any item, we will cheerfully correct, by replacing it or refunding the amount charged, provided notice is given within five days after receipt of goods. We assume no liability as to safe delivery of goods by forwarders, or that plants will live.



CRAPE MYRTLE





