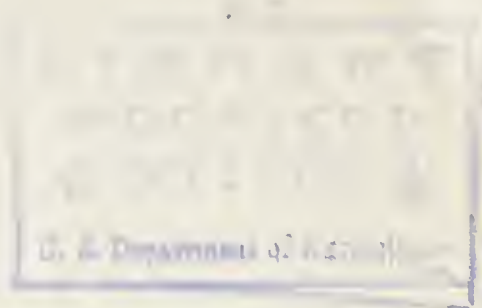


Historic, archived document

Do not assume content reflects current scientific knowledge, policies, or practices.

263

*Bulbs
from the
World's
Best Growers*



JOB. P. WYATT & SONS Co.
SEEDSMEN
RALEIGH . . . NORTH CAROLINA

WYATT'S

BULBS AND SEEDS for FALL and WINTER PLANTING

1881



1935

Much work precedes the compilation of a catalog. Our business is built on our ability to furnish our customers with bulbs, plants and seeds particularly adapted to their needs. Therefore, in presenting this catalog of "WYATT'S BULBS AND SEEDS FOR FALL AND WINTER PLANTING" we have carefully inspected and studied hundreds of varieties, their form, color, size, adaptation, etc., and selected those varieties that have, in actual tests, proven to be superior for your conditions. Wyatt's bulbs are imported direct from the very best growers in Holland and France. Your money can buy no finer bulbs. Let us fill your orders this fall. You'll save in price and postage and get better bulbs.

JOB P. WYATT & SONS COMPANY
SEEDSMEN

RALEIGH, NORTH CAROLINA

The Job P. Wyatt & Sons Company give no warranty, express or implied, as to description, quality, productiveness, or any other matter of any seeds, bulbs or plants they send out, and they will not be in any way responsible for the crop. If the purchaser does not accept the goods on these terms they are to be returned at once. Prices quoted are subject to market changes and to being unsold when order is received.

**Bloom these exquisite Flowers in
your Home this fall and winter**

Our 3-4-5 COLLECTION

3 FRENCH ROMAN HYACINTHS
4 LILY OF THE VALLEY
5 PAPER WHITE NARCISSUS and
1 QUART WYATT'S BULB FIBRE

12 Bulbs (value \$1.46) **\$1.00**
For Only
Postpaid

For the past five years stocks of this special offer have been exhausted before the close of the season. Don't wait.

Order Your Collections NOW!

WYATT'S ROMAN HYACINTHS

French Roman Hyacinths direct from the finest fields in France! That's what you get when yours are from Wyatt's. Compare them! Our French grown bulbs of these dainty, exquisitely fragrant flowers are perfectly hardy for outdoor planting as well as pot culture. For indoor flowers plant 1½ inches apart in pot placing pot 3 to 4 inches under the soil outdoors for 4 to 5 weeks—bring indoors to a bright window.

EARLY WHITE ROMAN HYACINTHS—Extra large bulbs 15c each; 3 for 40c; 12 for \$1.50; 25 for \$2.75; 100 for \$10.00, postpaid.

EARLY PINK ROMAN HYACINTHS—Extra size—15c each; 3 for 35c; 12 for \$1.25; 100 for \$9.00, postpaid.

EARLY BLUE ROMAN HYACINTHS—Extra size—15c each; 3 for 35c; 12 for \$1.25; 100 for \$9.00, postpaid.

WYATT'S LILY OF THE VALLEY

One of the quickest, easiest and most delightful plants for pot culture. Their fragrance and grace charm everyone who grows them. Plant 1½ inches apart in Wyatt's Prepared Bulb Fibre using pot with closed drain. Shade for 2 days then place in bright window indoors. Keep fibre moist. Wyatt's imported Valley Pips bloom in from 10 days to 2 weeks depending on varying conditions. Price—Extra large pips or crowns: 6 for 55c; 12 for \$1.00; 25 for \$1.85; 50 for \$3.50; 100 for \$6.50, postpaid.

WYATT'S PAPER WHITE NARCISSUS

The best known and most loved of all bulbous flowers for indoor culture. Our stocks are especially grown and selected for forcing in pots of pebbles, bulb fibre or soil. Plant 2 inches apart in bowls placing in a dark, cool place for 2 to 3 weeks after which bring them to light and warmth gradually. Never allow them to become overheated. A temperature of 50 to 55 degrees for the first few weeks, gradually increased to 70 to 75 degrees indoors allowing them to cool off to not over 60 degrees at night, is best. Price: Extra large forcing bulbs: 3 for 25c; 6 for 45c; 12 for 75c; 25 for \$1.25; 100 for \$4.25, postpaid. Large size: 3 for 20c; 6 for 35c; 12 for 60c; 25 for \$1.10; 100 for \$4.00, postpaid.

SOLEIL d'OR—Called the "Yellow Paper White" is very fragrant and readily bloomed following Paper White cultural directions. Price: Extra size bulbs 15c each; 3 for 35c; 6 for 65c; 12 for \$1.25; 25 for \$2.25, postpaid.

CHINESE SACRED LILY—The joss flower of the Orient and used to decorate the temples of worship of the Chinese. They will flower profusely grown in pebbles and water. Price: 15c each; 3 for 40c; 12 for \$1.25, postpaid.

Illustrations: Top to bottom
Roman Hyacinths
Lily of the Valley
Paper White Narcissus



The Finest Selection of Tulips in America

WYATT'S SUPER DARWINS!

THE FINEST TULIPS HOLLAND GROWS—We carefully studied nearly two hundred of the handsomest tulip varieties in cultivation while selecting the varieties that we offer here. We cannot too highly praise, and are eager to recommend to our most critical buyers such varieties as Afterglow, King George V, City of Haarlem, Rosabella, Nauticus, La Fiancee, etc. Make your selection from the following list and there can be no question that your Tulip garden will be among the smartest in America.

5 TULIP CELEBRITIES

BENE EST—26". Beautiful clear lemon yellow.

Price: 3 bulbs 30c; 6 for 55c; 12 for 95c; 25 for \$1.75; 100 for \$6.00, postpaid.

ECLIPSE—28". A rich crimson Tulip of striking appearance. Its great size and intense coloring will make this new variety very popular. Prices: 15c each; 3 bulbs 40c; 6 bulbs 75c; 12 bulbs \$1.50; 25 bulbs \$2.75; 100 bulbs \$10.00, postpaid.

PEKING—28". A giant handsome, deep golden yellow Darwin Tulip. Prices: 3 bulbs 30c; 6 bulbs 55c; 12 bulbs 95c; 25 bulbs \$1.75; 100 bulbs \$6.00, postpaid.

THE BISHOP—30". An exquisite flower of pure violet borne on a long, strong stem. The outstanding tulip of the blue shades. The Bishop will add grace and dignity to any garden. Prices: 3 bulbs 35c; 6 for 65c; 12 for \$1.10; 25 for \$1.95; 100 for \$7.00, postpaid.

YELLOW GIANT—28". The last and grandest addition to the yellow darwins. Bright yellow this giant fills a place long vacant in the Darwin group. Prices: 3 bulbs 40c; 6 for 75c; 12 for \$1.35; 25 for \$2.50; 100 for \$9.00, postpaid.

AFTERGLOW—30". Rosy orange, salmon edges. Extra.

BARONNE DE LA TONNAYE—28". Rose shaded blush.

BARTIGON—26". Fiery red, good forcer.

CENTENAIRE—28". Deep rose flushed claret.

CLARA BUTT—26". Soft Salmon Rose.

FARNCOMBE SANDERS—28". Beautiful clear scarlet.

FAUST—28". Purple Maroon nearly black, enormous flower.

HYPOLITE—30". Beautiful rich lavender blue.

KING HAROLD—28". Deep crimson maroon.

LA FIANCEE—30". Rosy mauve, edges light pink.

MRS. KRELAGE—28". Rose pink tinted lilac.

MRS. POTTER PALMER—28". Glowing purple.

NAUTICUS—30". Rich, deep, cerise rose. Extra.

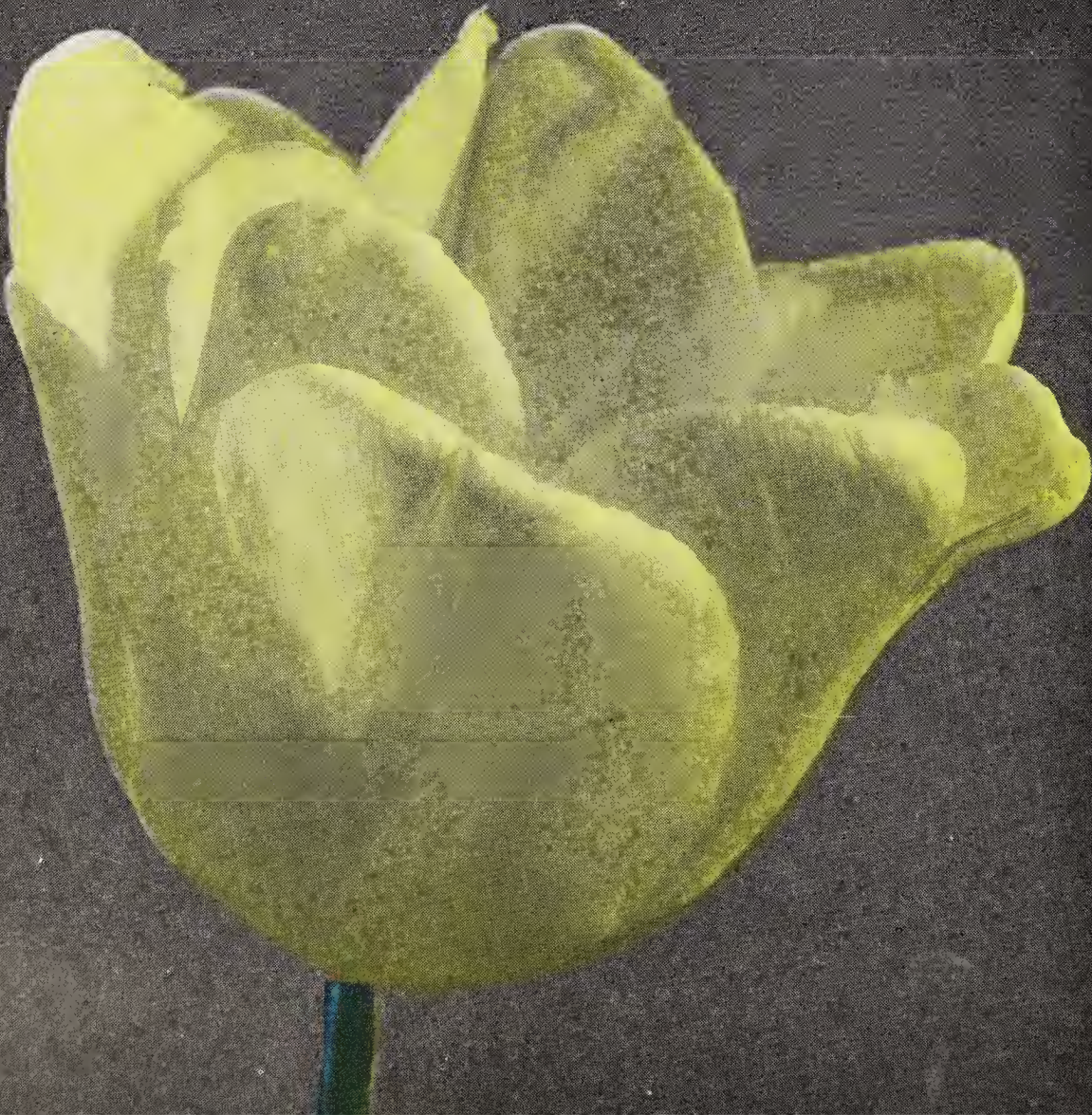
PRINCESS ELIZABETH—28". Soft lilac rose.

PHILLIP DE COMMINES—26". Velvety purple.

PRIDE OF HAARLEM—28". Rich, deep rose.

REV. EWBANK—26". Heliotrope lilac.

Prices: Any of the above 17 varieties; 3 bulbs 25c; 6 bulbs 40c; 12 bulbs 75c; 25 bulbs \$1.35; 100 bulbs \$4.75, postpaid.



Special Discount on Orders for 1000 or More Tulips!

PRINCESS MARY

SUPER
DARWIN
TULIP

Truly every inch an aristocrat! A large flower of brilliant deep rose, silvery edged, white base with blue margin. Grow a bed of Princess Mary to show your friends. Prices: 3 bulbs 50c; 6 for 95c; 12 for \$1.75; 25 for \$3.25; 100 for \$12.00, postpaid.

WYATT'S TRIUMPH TULIPS

This group of large flowering, bright hued tulips is the result of a crossing of Darwin and Single Early Tulips. The Triumphs bloom slightly earlier than Darwins and on taller, stronger stems than the Single Early varieties. They combine the beautiful colorings of both groups.

4 EXTRA LARGE SUPER DARWINS

CITY OF HAARLEM—28". Our field notes are "immense vermilion scarlet, large blue-black base, edged white." City of Haarlem is our favorite red tulip. The most intense scarlet of all tulips.

KING GEORGE V—30". A mighty monarch of beauty. Very large brilliant flower of cherry red. Plant Wyatt's King George V for the tulip specimen prize at your flower show!

MELICETTE—28". A rare shade of lavender. The inside of the flower is violet and the base blue. A bed of Melicette (lavender), Yellow Giant and Princess Mary (rose) will produce a color harmony beyond description.

ZWANENBURG—28". As graceful and proud as a swan. Pure white with long strong stems. A strikingly handsome tulip.

PRICES: Above four varieties, 3 bulbs 30c; 6 bulbs 50c; 12 bulbs 85c; 25 bulbs \$1.50; 100 bulbs \$5.50, postpaid.

A MIXTURE OF WYATT'S SUPER DARWIN TULIPS

Not merely a mixture of darwin Tulips! This is a mixture of Wyatt's Super Darwins—giant flowers in a blaze of glamorous colors. We challenge the duplication of this mixture anywhere at this low price. Prices: 6 bulbs 40c; 12 for 65c; 25 for \$1.25; 100 for \$4.65, postpaid.



SAVE!

10

Super
DARWINS
each packed
and labeled
separately

Order Collection
No. 10

You get one each of:
Afterglow
Bartigon
Centenaire
Clara Butt
Farncombe Sanders
King Harold
La Fiancee
Mrs. Potter Palmer
Pride of Haarlem
Princess Elizabeth

only

65c
postpaid

ALGIBA—24". An exquisite clear heliotrope tulip distinctly Darwin in size and shape. The coloring of this beautiful tulip is unobtainable in any other flower.

LORD CARNAVON—24". This is a strikingly handsome flower of huge proportions. The coloring is deep rose with creamy white edge. A solid bed of Lord Carnavons would attract the neighborhood!

TELESCOPIUM—24". Violet tinted magenta. Inside is wine red with a light yellow base. This is a very distinctive tulip. Plant a few bulbs this year and become acquainted with it.

ZIMMERMAN—24". Borne well on a strong stem Zimmerman is dark rose on light yellow ground. The center is white.

TRIUMPH TULIPS MIXED. We offer a mixture of the four varieties named above. Plant a bed and become acquainted with this interesting group.

PRICES: Any of above varieties, 3 bulbs 25c; 6 for 45c; 12 for 85c; 25 for \$1.50; 100 for \$5.50, postpaid.



Wyatt's Mighty
Super Darwin
King George V

WYATT'S COTTAGE or MAYFLOWERING TULIPS

Anyone who plants Ambrosia, Dido, Columbus, Twilight or Vesta will readily understand the increasing popularity of the Cottage Tulips. Ambrosia, Dido and Vesta are delightfully fragrant.

AMBROSIA—28". Very handsome fragrant flower of the typical cottage cup shape. Long stemmed, very large, inside salmon orange, outside shaded lilac rose, yellow black base.

DIDO—28". One of the most beautiful of all tulips. If you plant tulips this fall let us urge that at least some of them be Dido. The very large flowers are long cup shaped, inside bright salmon orange, yellow base bordered with green. Outside orange red with carmine shade and orange shaded edges. A most beautiful fragrant flower.

ARETHUSA—28". Soft clear rich yellow.

COLUMBUS—24". Golden yellow striped vermillion.

GESNERIANA MAJOR—26". Brilliant crimson scarlet.

GRENADIER—24". Flaming orange scarlet.

INGLESCOMBE YELLOW—26". Canary yellow.

INGLESCOMBE SCARLET—26". Intense scarlet.

INGLESCOMBE PINK—26". Delicate salmon pink.

MRS. MOON—26". Deep yellow. Pointed petals.

PICOTEE—26". White, edged rose.

ROSABELLA—26". Exquisite light salmon rose.

TWILIGHT—24". Mahogany and bronze flakes on blue.

VESTA—28". Pure white, long stems.

MIXTURE OF MAY FLOWERING TULIPS.

Prices: Any of the above May flowering varieties and mixtures, 3 bulbs 25c; 6 bulbs 45c; 12 bulbs 75c; 25 bulbs \$1.35; 100 bulbs \$4.75, postpaid.



Old Dutch or BREEDER TULIPS

No group can fill the place of the Breeder. The rich colorings in maroons, crimsons, gold and art shades have a definite place in every garden and home.

FAIRY—28". Exquisite terracotta and bronze.
YELLOW PERFECTION—28". Bronze yellow.

GOLDEN BRONZE—28". Golden bronze.

LOUIS XIV—30". Purple-edged bronze.

CARDINAL MANNING—28". Rosy violet.

MEDEA—26". Salmon carmine.

MIXED BREEDER TULIPS—All varieties.

Prices: 3 bulbs 25c; 6 bulbs 45c; 12 bulbs 75c; 25 bulbs \$1.40; 100 bulbs \$5.00, postpaid.

TULIP NOVELTIES

Extra Select Stocks

CLUSIANA—(The Lady Tulip). Appropriately referred to as "the candy-stick tulip" because of its long cylindrical shape and cherry red stripes on white self. Clusiana is one of the most fascinating and beautiful of tulips and is well adapted and easily grown out-of-doors or in pots. Prices: 3 bulbs 30c; 6 for 50c; 12 for 85c; 25 for \$1.65; 100 for \$6.00, postpaid.

SIRENE—The lily flowered tulip of delicate pink with long narrow pointed petals. Height 20 inches. 6 bulbs 35c; 12 bulbs 65c; 100 for \$4.50, postpaid.

FANTASY—Large, beautifully fringed Parrot Tulip of a bright rich rose color. Prices: 6 bulbs 85c; 12 bulbs \$1.50; 25 bulbs \$2.75, postpaid.

KAUFMANNIANA—This is a very choice subject for the Rock Garden. The soft shaded red, yellow and white flowers resemble waterlilies and bloom very close to the ground. Prices: 6 bulbs 75c; 12 bulbs \$1.25; 25 bulbs \$2.25, postpaid.

SINGLE EARLY TULIPS

The first Tulips to bloom in the spring—noted for their brilliant colors:

CHRYSOLORA—Pure yellow.

COTTAGE MAID—Delicate rose.

CRIMSON BRILLIANT—Deep crimson.

KEIZERSKROON—Scarlet edged yellow.

PINK BEAUTY—Glowing rose.

DE WET—Beautiful flushed stippled fiery orange scarlet.

MIXED SINGLE EARLY VARIETIES.

Prices: 6 bulbs 40c; 12 for 75c; 25 for \$1.35; 100 for \$4.50, postpaid.

DOUBLE EARLY TULIPS

MR. VAN DER HOFF—Pure yellow. Recommendable, sturdy variety.

PEACH BLOSSOM—Rose pink.

TEA ROSE—Pale salmon yellow.

V U R B A A K—Orange scarlet.

MIXED DOUBLE EARLY VARIETIES.

Prices: 6 bulbs 40c; 12 for 75c; 25 for \$1.35; 100 for \$4.50, postpaid.

Wyatt's Bulbs from the World's Best Growers



WYATT'S NARCISSI OR DAFFODILS

We take much pride in our selection of Narcissi (daffodils or jonquils). The following list presents only varieties that are best adapted to our soil and climatic conditions, and we are happy to say that many of the most magnificent varieties are included. The mighty John Farquhar, Olympia and Van Waveren's Giant, all giant trumpet Narcissi—the exquisite new Barri Nobility, and gay, sparkling, Cheerfulness, the new double Poetaz, so fragrant and fascinating. Be sure to plant some of these newer daffodils this fall and experience the spell of their charm, the strength of their great characters and their loveliness. While narcissi prefer well drained, loamy soil, fortunately for us they thrive and are hardy and multiply in most any situation. Sand and/or peat added to stiff, heavy clay soils will prove beneficial.

JOHN FARQUHAR (Trumpet). See illustration above. The superb, heavily frilled, outstanding trumpet of beautiful golden yellow, glittering as if sprinkled with gold dust, backed by the symmetrical soft sulphur yellow perianth, presents an unforgettable picture. The entire flower suggests rugged proportionate beauty such as the Greeks loved to express in their masterful sculptures. The length of the stem and the quality of the foliage strengthen the first impression obtained from the blooms. Entirely hardy. Belongs in every collection at the flower shows, where it is a consistent winner. Prices: Each 25c; 6 bulbs \$1.25; 12 bulbs \$2.25; 25 bulbs \$4.25; 100 bulbs, \$16.00, postpaid.

OLYMPIA (Trumpet). A giant flower with much strength of character and great beauty. With its wide perianth and deeply carved and fluted trumpet of medium length and pure rich gold coloring, it could be well called a glorified King Alfred. Prices: Each 20c; 6 bulbs 95c; 12 bulbs \$1.75; 25 bulbs \$3.25; 100 bulbs \$12.00, postpaid.

KING ALFRED (Trumpet). Large golden yellow flower of very fine appearance. Our stock of King Alfred is from the finest fields of that variety and far superior to most offerings. Prices: Each 20c; 6 bulbs \$1.00; 12 bulbs \$1.85; 25 bulbs \$3.50; 100 bulbs \$12.50, postpaid.

EMPEROR (Trumpet). Large golden yellow. Prices: 6 bulbs 65c; 12 bulbs \$1.15; 100 bulbs \$7.00, postpaid.

EMPRESS (Trumpet). White perianth, yellow trumpet. Prices: 6 bulbs 75c; 12 bulbs \$1.25; 100 bulbs \$7.50, postpaid.

VAN WAVEREN'S GIANT (Trumpet). Large primrose perianth with bright yellow cup. One of the finest and largest daffodils. Prices: Each 25c; 6 bulbs \$1.25; 12 bulbs \$2.00; 25 bulbs \$3.75; 100 bulbs \$13.50, postpaid.

MRS. E. H. KRELAGE (Trumpet). An exquisite narcissus. Large trumpet of lemon yellow with creamy white perianth. A new and extra good variety. Prices: 3 bulbs 60c; 12 bulbs \$2.10; 100 bulbs \$15.00, postpaid.

We Supply Extra Large Mother Bulbs in All Varieties

WYATT'S
NARCISSI or
DAFFODILS
continued—

Buy Wyatt's "Bulbs from the World's Best Growers"

Extra Large Mother Bulbs in All Varieties

SIR WATKIN (Incomparabilis). One of the largest of the Incomps. An old favorite among gardeners and always sure to bloom. Perianth pale sulphur yellow, deep yellow cup. Prices: 6 bulbs 65c; 12 for \$1.25; 25 for \$2.25; 100 for \$8.50, postpaid.

LUCIFER (Incomparabilis). A lovely glowing orange fluted cup surrounded by long flowing white petals make Lucifer a showy messenger of spring. Of decidedly cheerful appearance. Prices: 6 bulbs 50c; 12 for 95c; 25 for \$1.75; 100 for \$6.50, postpaid.

HOMESPUN (Incomparabilis). Perianth nicely rounded, each petal overlapping the other and of a soft yellow shade, crown beautifully frilled and of a richer tone. Prices: 6 bulbs 50c; 12 for 95c; 25 for \$1.75; 100 for \$6.50, postpaid.

NOBILITY (Barrii). This spring as in 1934, each visitor before leaving our Spring Daffodil Show would pause again spellbound before Nobility. Perfectly proportioned in color, form and size, its soft, refined elegance and beauty are compelling and unforgettable. Its long creamy overlapping petals surround a large flat glowing orange scarlet rimmed cup. Prices greatly reduced: Each 25c; 3 for 65c; 6 for \$1.25; 12 for \$2.25; 25 for \$4.25; 100 for \$15.00, postpaid.

BATH'S FLAME (Barrii). Yellow Perianth, deep yellow cup with broad edge of orange red. Very long petals give the flower a distinct and outstanding character. A perfection in scarlet and gold. Prices: 3 bulbs 45c; 6 for 85c; 12 for \$1.50, postpaid.

SEAGULL (Barrii). Large spreading pure white perianth, cup canary yellow edged apricot. A very charming flower, a vigorous and extremely hardy subject for your garden. Prices: 3 bulbs 25c; 6 for 45c; 12 for 85c; 25 for \$1.60; 100 for \$6.00, postpaid.

BONFIRE (Barrii). We could no longer resist offering this exquisite flower to our friends. Bonfire is one of those that carve a deep impression on the mind. Long ivory colored petals overlapping, surround a glowing orange scarlet cup of great beauty. Long stems, very free flowering. Prices: 3 bulbs 45c; 6 for 85c; 12 for \$1.50; 25 for \$2.75; 100 for \$9.50, postpaid.

CONSPICUOUS (Barrii). Excellent for naturalizing and very free flowering. Perianth yellow, flat short cup edged orange scarlet. This is an old favorite and a worthy subject for any garden. Prices: 3 bulbs 25c; 6 for 45c; 12 for 75c; 25 for \$1.45; 100 for \$5.50, postpaid.

EVANGELINE (Leedsii). A delightful citron yellow cup resting on a firm rounded pure white perianth. Stem 20 inches. Not new but still rated as one of the very best varieties. Prices: 6 bulbs 45c; 12 for 85c; 25 for \$1.60; 100 for \$6.00, postpaid.

QUEEN OF THE NORTH (Leedsii). Broad overlapping pure white petals, pale primrose cup with finely crinkled edge. Prices: 6 bulbs 45c; 12 bulbs 85c; 25 bulbs \$1.60; 100 bulbs \$6.00, postpaid.

ALBA PLENA ODORATO (Double). Pure white delightfully fragrant flowers on long, strong stems. Prefer cool semi-shaded situations. Prices: 6 bulbs 45c; 12 bulbs 85c; 25 bulbs \$1.60; 100 bulbs \$6.00, postpaid.

PRIMROSE PHOENIX (Double). Pure yellow, large rose-shaped flowers, long stems. Prices: 6 bulbs 65c; 12 bulbs \$1.15; 25 bulbs \$2.10; 100 bulbs \$8.00, postpaid.

ELVIRA (Poetaz). Three to four large pure white flowers with bright yellow eyes. One of the best of the poetaz. Prices: 6 bulbs 45c; 12 for 85c; 25 for \$1.60; 100 for \$6.00, postpaid.

CHEERFULNESS (Poetaz). (See illustration.) Three to four sparkling, cheerful, double flowers on a long strong stem. While the general effect of the coloring is pure white, there is a suggestion of pale yellow at the base of the petals which seems to give character to the entire flower. Prices: 3 bulbs 45c; 6 bulbs 85c; 12 bulbs \$1.60; 25 bulbs \$3.00; 100 bulbs \$11.00, postpaid.

HELIOS (Poetaz). Delightful creamy yellow flowers with pure yellow cups. Five to eight large florets on each stem. This variety is readily forced. Prices: 6 bulbs 50c; 12 for 95c; 25 for \$1.75; 100 for \$6.50, postpaid.

RECURVUS (Poeticus). Popularly known as "Pheasant's Eye" or "Poet's Narcissus." Recurvis is extremely hardy, fragrant and beautiful. Perianth pure white, cup deep orange-red. We recommend Recurvis and Horace above all other daffodils for naturalizing. Prices: 6 bulbs 45c; 12 for 75c; 25 for \$1.40; 100 for \$5.25, postpaid.

HORACE (Poeticus). Hardy free flowering variety with pure white perianth and conspicuous red cup. Horace has remained fresh in our exhibits 6 days after cutting. Prices: 6 bulbs 45c; 12 bulbs 85c; 25 bulbs \$1.60; 100 bulbs \$6.00, postpaid.

SALMONETTA. A diminutive, dainty dwarf Leedsii with silvery white perianth and salmon tinted cup. A sweet free flowering little thing with a definite character and a perfect gem for the rock garden. We urge you to take advantage of this extremely low price at which we offer this variety this season. Prices: 3 bulbs 45c; 6 for 85c; 12 for \$1.50; 25 for \$2.50; 100 for \$8.50, postpaid.

SINGLE JONQUILS (Jonquilla Simplex). That fragrant little gem of golden clusters. It comes from Southern France and is the original true Jonquil of ancient history. Pure golden flowers on rush-like foliage, very fragrant. Prices: 3 bulbs 30c; 6 for 50c; 12 for 95c; 25 for \$1.75; 100 for \$6.00, postpaid.

TRIANDRUS ALBUS. (See illustration.) The "Angel's Tears" of old Portugal. A delightful rock garden subject. Creamy white flowers are about $\frac{3}{4}$ inch long with trumpet pointing down and sharply recurved petals pointed up. Prices lower than last year: 6 bulbs \$1.00; 12 for \$1.85; 25 for \$3.50; 100 for \$12.00, postpaid.

MIXED DAFFODILS FOR NATURALIZING. A mixture of hardy sorts especially good for naturalizing. This mixture contains a wide variety of types and varieties. Prices: 12 bulbs 85c; 25 bulbs \$1.50; 50 bulbs \$2.75; 100 bulbs \$5.00; 1,000 bulbs \$40.00, postpaid.

AN INVITATION!

You are most cordially invited to visit Raleigh next spring and attend our third showing of fine Daffodils. Last spring the hundreds of visitors who saw our exhibit of Daffodils, only marvelled at the beauty of over one hundred sixty varieties, each labeled. The showing will be held again next spring in one of Raleigh's leading hotels. Write us for the date!

Nobility



Cheerfulness



Angel's Tears (Triandrus Albus)



WYATT'S HYACINTHS

There can be no substitute in the home or garden for Hyacinths. Beds or borders without them are incomplete. Their perfect form, color and fragrance render them invaluable for formal or informal use in the garden and for pot culture in the home. Plant 5 inches apart and 5 to 6 inches deep outdoors.

For pot culture use one-half of Wyatt's Bulb Fibre mixed well with one-half of black soil. For best results bury the pot of Hyacinths out of doors in a well-drained place allowing them to remain there for 6 to 8 weeks, then move to a semi-dark cool place for a week or two before bringing them indoors.

EXHIBITION HYACINTHS

These extra size bulbs are imported by us especially for those who desire to produce extra large spikes of beautifully colored fragrant flowers.

GARIBALDI—Glowing crimson red.

GERTRUDE—Beautiful rose.

GRAND MAITRE—Deep lavender blue.

GRANDEUR A'MERVEILLE—Rosy white.

KING OF THE BLUES—Dark blue.

L'INNOCENCE—Pure white.

MENELIK—Purplish black.

MORENO—Bright pink.

ENCHANTRESS—Clear light blue.

ROI DES BELGES—Deep red.

SIR WM. MANSFIELD—Purplish mauve.

YELLOW HAMMER—Pure yellow.

Prices: 20c each; 3 bulbs 50c; 6 bulbs 90c; 12 bulbs \$1.75; 25 bulbs \$3.25; 100 bulbs \$11.50, postpaid.

EXHIBITION HYACINTHS

12

To acquaint you with the superb quality of our Hyacinths, we offer a limited number of collections consisting of one each of the 12 varieties named above (\$2.40 value) for only \$1.75, postpaid.

BEDDING HYACINTHS

This is the correct size bulb for outdoor planting. They produce magnificent spikes of beautifully colored fragrant flowers.

KING OF BLUES—Dark blue.

KING OF THE YELLOWS—Clear yellow.

L'INNOCENCE—Pure white.

MORENO—Bright rose.

ENCHANTRESS—Clear light blue.

ROI DES BELGES—Deep red.

MIXED BEDDING HYACINTHS.

Prices: 15c each; 3 bulbs 40c; 12 bulbs \$1.40; 25 bulbs \$2.50; 100 bulbs \$9.00, postpaid.

DUTCH IRIS

This is a giant-flowering strain of the Spanish Iris, blooming two weeks earlier. Their large showy blooms are carried upright on stiff, but slender stems. They are delicately sweet scented and besides their value to the garden they are highly prized for cut-flowers.

IMPERATOR, Blue.

D. HARINGH, White.

YELLOW QUEEN, Yellow.

Prices: 3 bulbs 25c; 12 bulbs 75c; 25 bulbs \$1.25; 100 bulbs \$3.75, postpaid.

MIXED DUTCH IRIS—Prices: 6 bulbs 35c; 12 bulbs 65c; 25 bulbs \$1.15; 100 bulbs \$3.50, postpaid.

SPANISH IRIS

One of the most inexpensive of bulbous flowers; easy to grow and most attractive for mass planting in borders and beds as well as for cutting.

KING OF THE YELLOWS **KING OF THE WHITES**

A. VON HUMBOLT, Clear Blue.

Prices: 6 bulbs 35c; 12 bulbs 65c; 25 bulbs \$1.15; 100 bulbs \$4.00, postpaid.

MIXED SPANISH IRIS including many different sorts.
Prices: 3 bulbs 20c; 12 bulbs 65c; 25 bulbs \$1.00; 100 bulbs \$3.50, postpaid.



Wyatt's
Giant
Mixed
Crocus



WYATT'S CROCUS

One of the earliest flowers to bloom in the spring outdoors. In the border plant them in groups of at least 25 of one color, setting the bulbs 2 inches deep and not more than 2 inches apart. Large mass planting produce a gorgeous display of bright colors. Plant in October or early November. They will come again year after year.

KING OF THE WHITES—Pure white.
ALBION—Purple striped white.
BARON VON BRUNOW—Deep purple.
GOLDEN YELLOW—Golden.
KING OF THE BLUES—Large deep blue.
SIR WALTER SCOTT—White striped lilac.
QUEEN OF THE BLUES—Clear lilac blue.
GIANT MIXED CROCUS.

Prices: 6 bulbs 25c; 12 bulbs 40c; 25 bulbs 75c;
100 bulbs \$2.00; 1,000 bulbs \$17.50, postpaid.

CHIONODOXA

An early spring flowering bulb for beds or borders. Deep blue with white in center. Price: 6 for 25c; 12 for 45c; 100 for \$3.25, postpaid.

RANUNCULUS BULBS

Beautiful little dwarf plants producing double flowers in many colors. Plant in a half shady place. Price: 1/2 dozen 30c; 50c per dozen; \$3.75 per 100, postpaid.

IXIAS

For pot or outdoor culture the Ixias are very desirable. They have long slender spikes or blooms. 12 for 50c; 100 for \$3.50, postpaid.

PEONIES

Wyatt's Peony Roots are carefully selected from the most hardy stock in the North and produce beautiful double flowers of enormous size. Each root has 5 to 7 strong buds and makes a healthy, vigorous plant.

DOUBLE RED.
DOUBLE PINK.
DOUBLE WHITE.

Prices: 35c each; 3 for 85c; 12 for \$2.75, postpaid.

WYATT'S FREESIAS

One of the most beautiful of flowers for indoor culture possessing peculiar grace of form and a most delightful fragrance. They grow extremely well in pots of Bulb Fibre or black soil.

PURITY—White.
GENERAL PERSHING—Bronze pink.
CALIFORNIA—Pure yellow.
AMETHYST—Lavender.
DAFFODIL—Extra fine yellow and orange. Largest of all.
MRS. MARK PETERS—Beautiful salmon rose.
MIXED COLORS.

Prices: 6 bulbs 25c; 12 bulbs 45c; 25 bulbs 85c;
100 bulbs \$3.00, postpaid.

FRITILLARIA

The quite large, bell-shaped blooms are curiously marked in contrasting colors. There are bright purple and bronze tints; also white ones, all of them marked with contrasting colors, including green. Prices: 6 bulbs 30c; 12 bulbs 50c; 100 for \$3.75, postpaid.

OXALIS

Charming little half trailing or bush plants particularly adapted for pot culture and hanging baskets, the foliage alone is very attractive and when in flower they are exceedingly pretty.

BERMUDA BUTTERCUP—The flowers are of the purest bright buttercup yellow. Price: 5c each; 40c doz.; \$3.00 per 100, postpaid.

GRAND DUCHESS—Extremely free flowering. Prices for either White, Pink or Lavender 5c each; 40c per doz.; \$3.00 per 100, postpaid.

BULB FIBRE

Especially Prepared for the Cultivation of Bulbs Indoors

You can easily grow bulbs indoors during the winter months in Wyatt's Prepared Bulb Fibre. The fibre can be used in any bowl or dish without drainage and the bulbs grow far better in the fibre than in soil or pebbles. It is clean and odorless and contains all the food the bulb needs during the growing period. Complete instructions telling how to use Wyatt's Prepared Fibre will be sent you with your order. Prices: 1 quart 15c; 2 qts. 25c; 4 qts. 45c; 8 qts. 80c; 16 qts. \$1.40, postpaid.

National
Eazy Wear
Garden Gloves



Soft as kid—strong as leather.
Washable. Three sizes: Small,
Medium, Large.

**THE IDEAL CHRISTMAS
GIFT!**

Special 69c
Postpaid

HARDY LILIES For Outdoor Planting MADONNA LILIES

(Ready in September)

This favorite Easter Lily is hardy outdoors, bears glistening white flowers on long, strong, stiff stems, 3 to 4 feet high. This famous and very beautiful white Lily is known the world over. Be sure to have some of these outdoor Easter Lilies blooming next spring. Large bulbs 30c each; 3 for 75c; dozen \$2.65, postpaid.

FOLLOWING VARIETIES READY FOR SHIPMENT IN OCTOBER AND NOVEMBER

For color, fragrance, beauty and variety of form, nothing can equal these grand flowers. **LILIUM AURATUM** (The Gold Banded Lily of Japan). Flowers white dotted crimson, with a clear golden band. Price, large bulbs, 35c each; \$3.25 per dozen.

LILIUM SPECIOSUM RUBRUM — White, shaded and spotted with rose. Price: 35c each; \$3.25 per dozen.

REGALE (Regal Lily). Large fragrant white blooms with canary-yellow throat and blush-white edges. 5 to 6 ft. June and July. 35c each; 3 for 95c; 12 for \$3.25.

CALLA LILIES

(Ready in November)

AETHIOPICA, OR LILY OF THE NILE—The old favorite White Calla Lily makes a very pretty pot plant. Only one bulb should be put in each pot. 30c each; \$2.65 per dozen.

ELLIOTTIANA—The golden yellow calla. Extra large bulbs. 35c each; \$2.75 per dozen.

BLUEBELLS—Wood Hyacinths (Scillas)

SIBERICA—Most popular for bulb beds, borders and rockeries. Beautiful hardy spring-flowering bulbs producing rich blue flowers in profusion. Prices: 6 bulbs 30c; 12 for 50c; 100 for \$3.75, postpaid.

CAMPANULATA ALBA—Very beautiful, large flowering white variety. Prices: 6 bulbs 30c; 12 for 50c; 100 for \$3.75, postpaid.

CAMPANULATA ROSEA—Graceful stems of fine large clear pink flowers. Prices: 6 bulbs 30c; 12 for 50c; 100 for \$3.75, postpaid.

CAMPANULATA COERULEA—The true Blue Bell of Grandmother's garden. Deep porcelain blue flowers in profusion. Perfectly hardy. Prices: 6 bulbs 30c; 12 for 50c; 100 for \$3.75, postpaid.

ANEMONES (Windflower)

DE CAEN (Giant French Poppy-Flowered Anemone). A mixture of rich colors that are found only in Anemones. Prices: 6 bulbs 30c; 12 for 50c; 100 for \$3.75, postpaid.

ST. BRIGID (Semi-Double). Mixture of brilliant colors all having the blue-black center. Prices: 6 bulbs 30c; 12 for 50c; 100 for \$3.75, postpaid.

ERANTHIS (Winter Aconite)

Attractive little plants with beautiful golden flowers. They thrive best in most places under trees. 12 for 50c; 100 for \$3.00, postpaid.

SNOWDROPS (Galanthus)

In the early spring months there is nothing more beautiful than a sheet of the snowy, graceful blossoms of the Snowdrops. 6 bulbs 25c; 40c per dozen; \$3.00 per 100, postpaid.

SNOWFLAKES (Leucojum)

Dainty, white, bell-shaped, pendant flowers attractively tipped with green and gracefully arranged on a nodding stem 12 to 15 inches in length. 3 for 25c; 12 for 65c; 100 for \$4.50, postpaid.

CROWN IMPERIAL

An old favorite in the gardens of long ago. We find our Dutch grower with a most excellent stock. The Crown Imperial grows 3 to 4 feet high and bears a heavy crown of bells, usually orange or orange-scarlet. Prices: 35c each; 3 for 90c; 12 for \$3.25, postpaid.

GRAPE HYACINTHS (Muscari)

These very curious and pretty little Hyacinths are perfectly hardy and of the easiest culture.

BLUE GRAPE HYACINTHS—6 bulbs 25c; 45c per dozen; \$3.50 per 100, postpaid.

WHITE GRAPE HYACINTHS—6 bulbs 25c; 45c per dozen; \$3.50 per 100, postpaid.



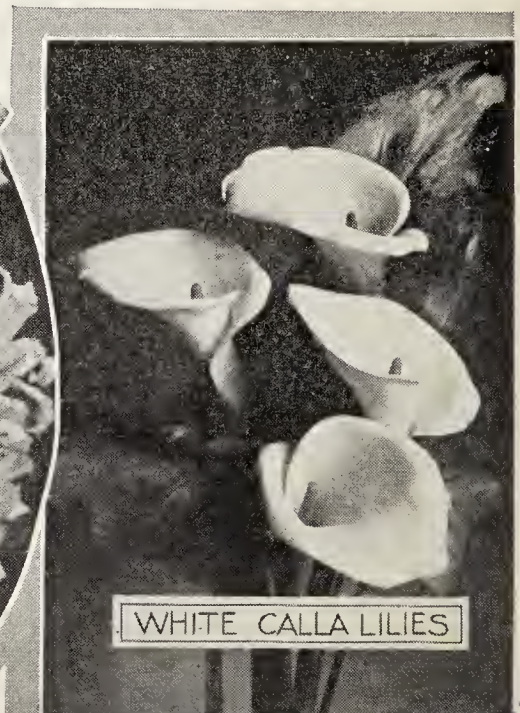
WHITE SCILLAS



ANEMONES MIXED



AURATUM LILIES



WHITE CALLA LILIES

WYATT'S

Hardy Annual and Perennial

FLOWER SEEDS

For Fall and Winter Planting

Most perennials and a good number of our most popular annuals should be planted during the early fall and winter months. The varieties listed below are perfectly hardy and produce best results planted at this time of the year. We offer only new crop "Tested Seeds" and you are thereby assured of an excellent stand of your favorite flowers.

	Per Pkt.	Per 1/8 Oz.
No. 1023— ALYSSUM —Saxatile compactum. Golden yellow flowers 9 ins.....	.10	.25
No. 1037— ANCHUSA ITALICA —Gentian blue. 4 feet high.....	.15	.20
No. 1047— ANTIRRHINUM (Snapdragon) Rose Dore New, Salmon rose.....	.10	.35
No. 1049— ANTIRRHINUM —Venus, Flesh pink.....	.10	.35
No. 1050— ANTIRRHINUM —Mixed colors.....	.10	.25
No. 1055— ANTIRRHINUM —Brilliant red.....	.10	.35
No. 1058— ANTIRRHINUM —Golden Queen. Golden yellow.....	.10	.35
No. 1078— AQUILEGIA —(Columbine)—Chrysantha. Pale yellow. 2 feet.....	.10	.50
No. 1070— AQUILEGIA —Single Mixed. All colors. Very fine.....	.10	.25
No. 1074— AQUILEGIA —Wyatt's Long Spurred Hybrids Mixed. 3 feet.....	.15	.75
No. 1085— ARABIS —Rock Cress. Pure white. 5 inches.....	.10	.20
No. 1091— ASPARAGUS —Plumosus. Fern.....	.25	
No. 1160— ASTER —(Hardy Mixed Michaelmas Daisy).....	.10	.85
No. 1197— BELLIS —(English Daisy.) Snowball. Double white. 6 inches.....	.10	.60
No. 1199— BELLIS —Longfellow. Dark rose. 6 inches.....	.10	.60
No. 1200— BELLIS —Wyatt's Double Mixed. All colors. Complete mixture... ..	.10	.45
No. 1240— CALENDULA —Double mixed. Orange and lemon shades.....	.10	.15
No. 1250— CALLIOPSIS —Single. Yellow and maroon.....	.10	.15
No. 1275— CANDYTUFT —Gibraltaria. Beautiful lilac flowers, 12 inches.....	.10	.35
No. 1277— CANDYTUFT —Sempervirens. Pure white. 10 inches.....	.10	.50
No. 1290— CANTERBURY BELLS —Single mixed colors. 3 feet.....	.10	.35
No. 1300— CANTERBURY BELLS —Double mixed. All colors.....	.10	.35
No. 1330— CARNATION —Chaubaud's Everblooming Mixed.....	.15	.60
No. 1366— CENTAUREA, Cyanus . (Bachelor's Buttons)—Double rose.....	.10	.15
No. 1367— CENTAUREA, Cyanus —Double blue.....	.10	.15
No. 1370— CENTAUREA, Cyanus —Double mixed colors.....	.10	.15
No. 1371— CENTAUREA, Candidissima (Dusty Miller)—Gray white foliage... ..	.10	.25
No. 1420— CHRYSANTHEMUM —Wyatt's Hardy Oriental.....	.25	
No. 1472— COREOPSIS —Lanceolat. Single yellow flowers, 2 feet.....	.10	.15
No. 1473— COREOPSIS —New Double yellow.....	.10	.35
No. 1540— DELPHINIUM —Single mixed.....	.10	.45
No. 1543— DELPHINIUM —Gold Medal Hybirds. Very choice.....	.15	.60
No. 1545— DELPHINIUM —Bellamosum. Dark blue. 3 feet.....	.10	.75
No. 1548— DELPHINIUM —Belladonna. Light blue. 3 feet.....	.10	.75
No. 1580— DIANTHUS —Plumarius Single Mixed. Hardy. (Pheasant Eye Pinks.) ..	.10	.20
No. 1581— DIANTHUS —Plumarius Double Mixed. (Double Scotch Pinks.) ..	.10	.45
No. 1583— DIANTHUS (Sweet Wivelsfield) ..	.10	.35
No. 1590— DIGITALIS —(Foxgloves)10	.25

The Last Word in Larkspur Wyatt's Double Flowering Imperial Larkspur

- No. 1714—**IMPERIAL WHITE SPIRE**—Double pure snowy white. Pkt. 10c; 1/8 oz. 25c.
 No. 1716—**IMPERIAL CARMINE KING**—Giant double deep carmine rose. Pkt. 10c; 1/8 oz. 25c.
 No. 1727—**IMPERIAL EXQUISITE IMPROVED**—Your old favorite with its former beauty and charm magnified many times. Fluffy clear pink. Pkt. 10c; 1/8 oz. 25c.
 No. 1717—**IMPERIAL DAININESS**—Double delicate lavender. Pkt. 10c; 1/8 oz. 25c.
 No. 1719—**IMPERIAL LILAC SPIRE**—An exquisite lilac, very double. Pkt. 10c; 1/8 oz. 25c.
 No. 1722—**IMPERIAL BLUE SPIRE**—Handsome, double, deep oxford blue. An outstanding variety from a standpoint of size, color and form. Pkt. 10c; 1/8 oz. 25c.
 No. 1724—**IMPERIAL LOS ANGELES IMPROVED**—Immense, very double flowers of brilliant rose or salmon borne on long spikes. Claimed the most beautiful Larkspur. Pkt. 10c; 1/8 oz. 25c.
 No. 1725—**IMPERIAL EMPRESS IMPROVED**—Giant double, rich salmon rose. Pkt. 10c; 1/8 oz. 25c.
 No. 1726—**IMPERIAL BLUE BELL**—Delightful clear azure blue. Try a bed of this variety mixed with single Shirley wild rose pink poppies. Pkt. 10c; 1/8 oz. 25c.
 No. 1720—**WYATT'S GIANT IMPERIAL MIXED**—Beautifully blended mixture of the most handsome Larkspurs grown. Pkt. 10c; 1/8 oz. 20c.

	Per Pkt.	Per 1/8 Oz.
No. 1591— CALIFORNIA POPPY —Golden West.....	.10	.15
No. 1592— CALIFORNIA POPPY —Sunlight.....	.10	.15
No. 1600— CALIFORNIA POPPY —Mixed.....	.10	.15
No. 1605— EUPHORBIA —(Snow on the Mountain).....	.10	.15
No. 1630— GAILLARDIA —Grandiflora Mixed. Also called blanket flower.....	.10	.25
No. 1646— GEUM —Mrs. Bradshaw. Orange-red. 1 1/2 feet high.....	.15	.50
No. 1666— GYPSOPHILA —Paniculata. (Hardy Baby's Breath.) White. 3 feet... ..	.10	.20
No. 1679— HIBISCUS —Mallow.....	.10	.20
No. 1680— HOLLYHOCK —Single Mixed.....	.10	.20
No. 1681— HOLLYHOCK —Newport Pink. Pink. 5 to 7 feet high.....	.10	.30
No. 1682— HOLLYHOCK —Double Scarlet. Bright red. 5 to 7 feet.....	.10	.30
No. 1683— HOLLYHOCK —Double Yellow. Yellow. 5 to 7 feet.....	.10	.30
No. 1684— HOLLYHOCK —Double Salmon Rose. 5 to 7 feet.....	.10	.30
No. 1685— HOLLYHOCK —Double Maroon. Very dark red. 5 to 7 feet.....	.10	.30
No. 1686— HOLLYHOCK —Double White. Pure White. 5 to 7 feet.....	.10	.30
No. 1690— HOLLYHOCK —Wyatt's Special Mixture of Double Hollyhocks.....	.10	.25
No. 1736— LAVENDER —(Sweet Lavender).....	.10	.20
No. 1739— LINUM —Perenne Blue. Hardy flax with blue flowers.....	.10	.15
No. 1743— LOBELIA —Cardinalis. (Cardinal Flower.) Beautiful scarlet flowers ..	.25	2.00
No. 1751— LUPINUS —Polyphyllus. (Mixed Perennial Lupins.) 4 feet.....	.10	.15
No. 1753— LYCHNIS —Chalcedonica. (Jerusalem or Maltese Cross.).....	.10	.20
No. 1781— MATRICARIA —(Feverfew) ..	.10	.15
No. 1782— MATRICARIA —(Feverfew). Golden Ball. Golden yellow flowers....	.15	.50

FROM _____

ADDRESS _____

PLACE
POSTAGE
STAMP
HERE

JOB P. WYATT & SONS CO.

327 South Wilmington St.

**"TESTED SEEDS"
FOR THE SOUTH**

RALEIGH, N. C.

When Traveling

Your travel funds are safe
if you carry

American Express
TRAVELERS CHEQUES

**BE CAREFUL
PLEASE**



BEFORE SEALING THIS ENVELOPE

Are you sure you have signed your **NAME** given your full **ADDRESS** and shipping instructions on enclosed order sheet?

JOB P. WYATT & SONS CO., Raleigh, N. C.

Memorandum of Remittance

Amount
of
Order

DOLLARS	
	CENTS

Payable to

JOB P. WYATT & SONS COMPANY, INC.
Seed Merchants
325-27 S. Wilmington Street
Raleigh, N. C.

Name & Address of Sender: Date.....193

YOU MAY REMIT WITH AMERICAN EXPRESS MONEY ORDER

Important: Fill out blank spaces above to show Amount of Order, Date Sent and Name of Sender. Then take this memorandum with money, including fee (see rates below) to any AMERICAN EXPRESS or RAILWAY EXPRESS office, or to one of the thousands of Drug and other Stores which sell Money Orders. They will issue you an American Express Money Order and a receipt. Mail the Money Order and keep the receipt with this slip as a memorandum for reference.

NOTE LOW RATES FOR AMERICAN EXPRESS MONEY ORDERS FOR PAYMENT IN U. S. OR CANADA NO EXTRA CHARGE FOR U. S. CHECK TAX

From \$ 0.01 to \$ 2.50, 6 cents	From \$20.01 to \$40.00, 15 cents
From 2.51 to 5.00, 8 cents	From 40.01 to 60.00, 18 cents
From 5.01 to 10.00, 10 cents	From 60.01 to 80.00, 20 cents
From 10.01 to 20.00, 12 cents	From 80.01 to 100.00, 24 cents
Over \$100.00	At above rates.

Wyatt's New Crop Pansy Seeds



Wyatt's
Super Giant
Pansy
No. 1875

No. 1875—**WYATT'S NEW SUPER GIANT PANSY.**
The immense flowers of this new strain often produce flowers double the size of the ordinary varieties. Wyatt's Super Giant Pansies are borne in profusion on large vigorous plants supporting long, strong stems. The rich coloring and great size of the flowers in addition to its prolonged blooming season will make this new variety a garden favorite and a sure prize winner wherever exhibited. Pkt. 50c; 3 pkts. \$1.25.

No. 1877—**SWISS GIANT MIXED**—Wyatt's carefully blended mixture of Swiss Giant Pansies is outstanding for its wide range of rich coloring. The flowers are large and on tall stems. Pkt. 25c; 2 pkts. 40c; 1/8 oz. \$1.25.

No. 1870—**WYATT'S FANCY EXHIBITION** — A blending of our own containing only the very choicest secured from the leading Pansy specialists; it can be relied upon to produce flowers of immense size, very heavy texture and of the most brilliant colors. Pkt. 15c; 2 pkts. 25c; 1/8 oz. \$1.00; 1/4 oz. \$1.75; oz. \$6.75.

No. 1880—**TRIMARDEAU GIANT MIXED**—Trimardeau Pansies are distinguished by their magnificent varied colors and strong markings. Pkt. 10c; 3 pkts. 25c; 1/8 oz. 35c; 1/4 oz. 60c; oz. \$1.75.

Wyatt's Spencer Sweet Peas

- No. 2315—**CRIMSON KING**—Deep crimson.
- No. 2316—**AMBITION**—Exquisite Lilac.
- No. 2318—**ELFRIDA PEARSON**—Shell Pink.
- No. 2319—**ROYAL SCOT**—Orange-scarlet.
- No. 2321—**HEBE**—Bright rose.
- No. 2323—**GEORGE SHAWYER**—Salmon-rose.
- No. 2324—**KING WHITE**—White.
- No. 2325—**ROYAL PURPLE**—Rich purple.
- No. 2327—**YOUTH**—White, pink picotee.
- No. 2328—**PINKIE**—Deep rose-pink.
- No. 2329—**MRS. TOM JONES**—Azure blue.
- No. 2331—**MARY PICKFORD**—Cream pink.
- No. 2332—**ORANGE PICTURE**—Sunproof orange.
- No. 2339—**DOBBIES CREAM**—Deep primrose.
- No. 2343—**HAWLMARK PINK**—Rose pink.
- No. 2344—**MISS CALIFORNIA**—Cream pink.
- No. 2346—**TANGERINE**—Orange.
- No. 2348—**ASTA OHN**—Lavender.
- No. 2355—**COMMANDER GODSALL**—Dark blue.
- No. 2361—**WARRIOR**—Maroon chocolate.

Prices: Any above varieties of Giant Spencer Sweet Peas. Pkt. 10c; oz. 25c; 1/4 lb. 75c; lb. \$2.50, postpaid.

No. 2350 — **WYATT'S SUPERB MIXTURE OF SPENCER SWEET PEAS**—Prices: Pkt. 10c; oz. 20c; 1/4 lb. 60c; lb. \$2.00, postpaid.

	Per Pkt.	Per 1/8 Oz.
No. 1885— PENTSTEMON —(Beard Tongue). Fine mixed. 2 1/2 feet high... .10	.10	.85
No. 1960— PHLOX , drummondii. Hardy annual. All colors mixed..... .10	.10	.25
No. 1961— PHLOX —Decussata (Perennial Phlox.) Mixed colors. 3 feet high..... .25	.25	.45
No. 1970— POPPY —Single Shirley mixed .10	.10	.15
No. 1976— POPPY —Wild French Scarlet .10	.10	.15
No. 1977— POPPY —Oriental Hardy. Mixed colors. 3 feet high..... .10	.10	.30
No. 1983— POPPY —Iceland. Mixed colors. 1 1/2 feet high..... .10	.10	.35
No. 1985— POPPY —Double mixed..... .10	.10	.15
No. 1995— PORTULACA —Single mixed.. .10	.10	.20
No. 2000— PORTULACA —Double mixed.. .10	.10	.50
No. 2007— PRIMULA —Veris. (Cowslip.) 10 inches. Mixed colors..... .15	.15	.75
No. 2008— PRIMULA —Vulgaris. (English Primrose.) 6 inches. Yellow flowers... .10	.10	.75
No. 2015— PYRETHRUM — Single Fine Mixed. 2 feet. All colors..... .10	.10	.35
No. 2037— SALVIA —Farinacea. Perennial sage. Pale blue. 4 feet..... .15	.15	.30
No. 2051— SCABIOSA — Caucasica. Blue-bonnet or Cushion Flower. 2 1/2 feet..... .15	.15	.60

WYATT'S TESTED SEEDS FOR THE ROCK GARDEN

	Pkt.	Pkt.
No. 1023— ALYSSUM —Saxatile compactum10	.10	
No. 1085— ARABIS —Alpina (Rock Cress). White..... .10	.10	
No. 1086— ARENARIA —Montana..... .25	.25	
No. 1087— ARMERIA —Formosa. 1 ft..... .10	.10	
No. 1275— CANDYTUFT — Gibraltarica. Lavender-pink..... .10	.10	
No. 1276— CANDYTUFT —Queen of Italy. Rose .10	.10	
No. 1277— CANDYTUFT —Sempervirens. White .10	.10	
No. 1311— CAMPANULA —Carpatica. Blue.... .10	.10	
No. 1401— CERASTIUM —Tomentosum. (Snow-in-Summer.)..... .10	.10	
No. 1582— DIANTHUS — Deltoides (Maiden Pink)..... .20	.20	
No. 1668— GYPSOPHILA — Repens (Trailing Baby's Breath.)..... .15	.15	
No. 1737— LINUM —Flavum. Showy yellow.... .15	.15	
No. 1754— LYCHNIS —Viscaria splendens. 1 ft.. .10	.10	
No. 1811— MYOSOTIS —Plaustris semperflorens. 10 inches..... .10	.10	
No. 2007— PRIMULA —Veris (Cowslip). 10 ins. .15	.15	
No. 2008— PRIMULA —Vulgaris (English Primrose). 6 to 9 inches..... .10	.10	
No. 2033— SALVIA —Pratensis. Blue. 2 ft.... .20	.20	
No. 2039— SAPONARIA —Ocymoides.10	.10	
No. 2063— SEDUM —Acre. 3 inches..... .25	.25	
No. 2153— VERBENA —Venosa hardy verberna. .10	.10	
No. 2164— VERONICA —Spicata (Blue Speedwell). 1 1/2 ft.15	.15	
No. 2174— VIOLA —Cornuta. Mixed. 10 ins.... .15	.15	
No. 2179— WALLFLOWER —Siberian. 10-15 ins. .10	.10	
No. 2024— MIXTURE OF PERENNIAL ROCK GARDEN SEEDS. Large packet..... .25	.25	
No. 2025— MIXTURE OF ANNUAL ROCK GARDEN SEEDS. Large packet..... .10	.10	

Grow the Vegetables You Eat!

WYATT'S TESTED VEGETABLE SEEDS

BEETS

- No. 121—**WYATT'S CAROLINA MARKET**—Smooth globe shaped, beautifully uniform deep blood red variety best for fall sowing. Prices: Pkt. 10c; oz. 15c; $\frac{1}{4}$ lb. 35c; lb. \$1.00; 5 lbs. \$4.00, postpaid.
- No. 123—**CROSBY'S EGYPTIAN**—Extra good early variety medium size globe shaped. Prices: Pkt. 5c; oz. 10c; $\frac{1}{4}$ lb. 25c; lb. 85c; 5 lbs. \$3.50, postpaid.
- No. 128—**DETROIT DARK RED**—Standard for all truckers. Old favorite. Prices: Pkt. 10c; oz. 15c; $\frac{1}{4}$ lb. 35c; lb. 90c; 5 lbs. \$3.75, postpaid.

CABBAGE

- No. 151—**EARLY JERSEY WAKEFIELD**—The most popular variety. Small pointed heads. Earliest. Prices: Packet 5c; ounce 20c; $\frac{1}{4}$ lb. 50c; lb. \$1.75; 5 lbs. \$7.00; 10 lbs. \$12.50, postpaid.
- No. 152—**LARGE CHARLESTON WAKEFIELD**—Slightly larger and later than Jersey Wakefield. Prices: Packet 5c; ounce 20c; $\frac{1}{4}$ lb. 50c; lb. \$1.75; 5 lbs. \$7.00; 10 lbs. \$12.50, postpaid.
- No. 158—**WYATT'S ALL-HEAD**—The best second early cropper. A sure header and money maker. Prices: Packet 5c; ounce 20c; $\frac{1}{4}$ lb. 50c; lb. \$1.75; 5 lbs. \$7.00; 10 lbs. \$12.50, postpaid.
- No. 153—**LARGE LATE FLAT DUTCH**—The best large type for fall and winter planting. Prices: Packet 5c; ounce 20c; $\frac{1}{4}$ lb. 50c; lb. \$1.75; 5 lbs. \$7.00; 10 lbs. \$12.50, postpaid.
- No. 170—**DRUMHEAD SAVOY**—The medium small heads are tight-leaves wrinkled. Most cold resistant. Best flavored. Prices: Packet 5c; ounce 25c; $\frac{1}{4}$ lb. 60c; lb. \$2.00; 5 lbs. \$8.50, postpaid.

CARROTS

- No. 183—**CHANTENAY**—Deep orange coloring; half long. Prices: Packet 5c; ounce 10c; $\frac{1}{4}$ lb. 35c; lb. 90c, postpaid.
- No. 185—**DANVER'S HALF LONG**—Smooth tapering half-long variety. Good coloring. Prices: Packet 5c; ounce 10c; $\frac{1}{4}$ lb. 35c; lb. 90c, postpaid.
- No. 188—**SCARLET NANTES**—Good early variety. Grows 6 to 7 inches long; smooth. Prices: Packet 10c; ounce 15c; $\frac{1}{4}$ lb. 40c; lb. \$1.25; 5 lbs. \$5.00, postpaid.

KALE

- No. 342—**EXTRA DWARF BLUE CURLED SCOTCH**—Very compact, low growing plants with beautifully curled leaves of a bluish green color. Prices: Packet 5c; ounce 10c; $\frac{1}{4}$ lb. 30c; lb. \$1.00; 5 lbs. \$3.50, postpaid.
- No. 341—**DWARF GREEN CURLED SCOTCH**—Prices: Packet 5c; ounce 10c; $\frac{1}{4}$ lb. 25c; lb. 75c; 5 lbs. \$3.00, postpaid.
- No. 343—**SIBERIAN OR GERMAN**—Prices: Packet 5c; ounce 10c; $\frac{1}{4}$ lb. 25c; lb. 75c; 5 lbs. \$3.00, postpaid.

MUSTARD

- Sow 1 ounce to 100 ft. drill or plant $1\frac{1}{2}$ to 2 lbs. to the acre.
- No. 481—**WYATT'S FORDHOOK FANCY**—Best variety for home or market. Upright growth and beautifully curled. Prices: Packet 5c; ounce 10c; $\frac{1}{4}$ lb. 25c; lb. 75c; 5 lbs. \$3.00, postpaid.
- No. 485—**SOUTHERN GIANT CURLED**—The plants resemble Fordhook Fancy. Prices: Packet 5c; ounce 10c; $\frac{1}{4}$ lb. 20c; lb. 65c; 5 lbs. \$2.25, postpaid.
- No. 482—**CHINESE BROAD LEAF**—Large round leaves—dark green—not curled. Prices: Packet 5c; ounce 10c; $\frac{1}{4}$ lb. 20c; lb. 65c; 5 lbs. \$2.25, postpaid.

ONIONS

- No. 506—**WYATT'S PRIZETAKER**—The best all-round onion in cultivation. Beautiful copper color, good keeper, hardy and often reach $1\frac{1}{4}$ lbs. per bulb. Prices: Packet 10c; ounce 20c; $\frac{1}{4}$ lb. 45c; lb. \$1.50; 5 lbs. \$7.00; 10 lbs. \$12.50, postpaid.
- No. 509—**WHITE PORTUGAL OR SILVERSKIN**—Packet 10c; ounce 20c; $\frac{1}{4}$ lb. 60c; lb. \$2.00; 5 lbs. \$8.50, postpaid.

No. 504—**YELLOW GLOBE DANVERS**—Prices: Packet 5c; ounce 15c; $\frac{1}{4}$ lb. 45c; lb. \$1.50; 5 lbs. \$6.50, postpaid.

No. 502—**LARGE RED WEATHERSFIELD**—Prices: Packet 5c; ounce 15c; $\frac{1}{4}$ lb. 45c; lb. \$1.50; 5 lbs. \$6.50, postpaid.

ONION SETS

WHITE SILVER SKINS RED WEATHERSFIELD YELLOW DANVERS

Prices: Pint 20c; quart 35c, postpaid. Not prepaid. Peck (8 lbs.) \$1.00; bushel (32 lbs.) \$3.00.

PRICES SUBJECT TO CHANGE

SPINACH

No. 694—**WYATT'S RE-SELECTED BLOOMSDALE SAVOY SPINACH**—Prices: Packet 5c; ounce 10c; $\frac{1}{4}$ lb. 15c; lb. 40c; 5 lbs. \$1.25, postpaid.

No. 699—**VIRGINIA SAVOY**—Prices: Packet 5c; ounce 10c; $\frac{1}{4}$ lb. 15c; lb. 35c; 5 lbs. \$1.25, postpaid.

No. 695—**BROAD-LEAVED FLANDERS**—Prices: Packet 5c; ounce 10c; $\frac{1}{4}$ lb. 15c; lb. 40c; 5 lbs. \$1.25, postpaid.

TURNIPS

No. 774—**EARLY WHITE FLAT DUTCH**

No. 776—**YELLOW OR AMBER GLOBE**

No. 777—**POMERANIAN WHITE GLOBE**

No. 780—**LARGE WHITE NORFOLK**

No. 781—**PURPLE TOP WHITE GLOBE**

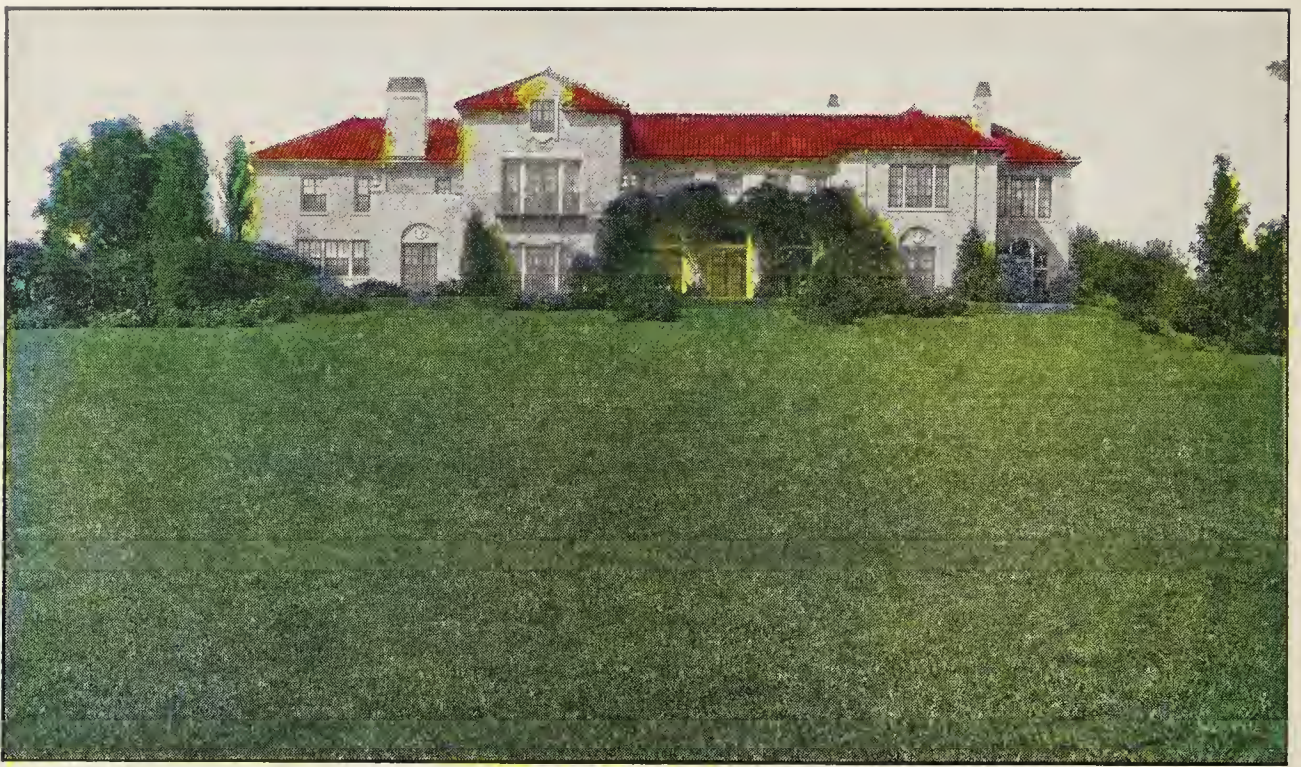
No. 783—**SOUTHERN SEVEN TOP**

No. 785—**EARLY WHITE EGG**

No. 787—**PURPLE TOP RUTABAGA**

Prices all above varieties of Turnips—5c pkt.; 10c per oz.; $\frac{1}{4}$ lb. 20c; lb. 65c; 5 lbs. \$2.50, all postpaid





Wyatt's "WONDERLAWN" Lawn Grass

You will find something different in this Wyatt's "Wonderlawn" Lawn Grass and as the name implies it will produce a wonderful lawn and give entire satisfaction in the Southern States. It is a properly blended mixture of grasses adapted to our Southern soil and climate. All the grasses used in this "Wonderlawn" mixture are field ripened, sun cured and double processed. By double processed we mean that all the weed seeds, chaff, dirt and other impurities have been removed. Prices:

WYATT'S "WONDERLAWN" LAWN GRASS, lb. 45c; 5 lbs. \$2.00; 10 lbs. \$3.50; 25 lbs. \$7.25; 100 lbs. or over at 27c lb. Postage or freight prepaid.

SHADY NOOK LAWN GRASS

For shady places under trees you will find our Shady Nook Law Grass very satisfactory. In order to have a good lawn in damp and especially shady

spots, a frequent application of agricultural lime is advised to prevent the soil from becoming sour. Prices: **SHADY NOOK LAWN GRASS,** lb. 50c; 5 lbs. \$2.25; 10 lbs. \$4.00; 25 lbs. \$9.00; 100 lbs. \$32.00, postage or freight prepaid.

WHITE DUTCH CLOVER FOR LAWN

We use this clover in our lawn grass mixtures, but some of our customers prefer an additional supply of clover. Prices: ½ lb. 30c; lb. 55c; 5 lbs. \$2.50; 10 lbs. \$4.50, postpaid.

ITALIAN RYE GRASS

This is used both for pasture and lawns although you will have better results with Wyatt's "Wonderlawn" Lawn Grass for a permanent lawn. Sow 1 lb. to 100 square feet of lawn and 100 lbs. per acre for pasture. Prices: lb. 20c; 5 lbs. 75c; 10 lbs. \$1.35, postpaid. Not prepaid, 25 lbs. at 9c lb.; 50 lbs. at 8c lb.; 100 lbs. at 7½c lb.

RYE
OATS
WHEAT

GET OUR LOW PRICES ON
CLOVERS

WINTER PEAS

VETCH
BARLEY
ALFALFA

ROSES FOR YOUR GARDEN

Our Growers Can Supply Almost Every Known Variety of Roses—Mail Us Your Order

This fine stock is shipped dormant direct from the field. All strong 2-year field grown plants. All prices on roses are postpaid. No roses or other plants shipped C.O.D.

AUTUMN—Burnt orange, shaded red. A charming new rose. \$1.00 each; 6 for \$5.00.

BETTY UPRICHARD—Salmon pink to carmine. 75c each; 6 for \$4.00.

BRIARCLIFF—Deep rosy pink. Excellent and very hardy. 75c each; 6 for \$4.00.

ETOILE DE HOLLANDE—Popular, bright red. 75c each; 6 for \$4.00.

LOS ANGELES—Coral pink, shaded gold. 75c each; 6 for \$4.00.

MRS. AARON WARD—Indian yellow, suffused salmon. Hardy. 75c each; 6 for \$4.00.

RADIANCE—Most popular pink rose. Most dependable. 75c each; 6 for \$4.00.

RED RADIANCE—Most popular red rose. Most dependable. 75c each; 6 for \$4.00.

SENSATION—Scarlet and maroon. Fine. 75c each; 6 for \$4.00.

SOUV. DE CLAUDIUS PERNET—Most popular yellow rose. 75c each; 6 for \$4.00.

TALISMAN—Immensely popular, red and gold. \$1.00 each; 6 for \$5.00.

FRAU KARL DRUSCHKI—White—popular. 60c each; 6 for \$3.25.

HARDY CLIMBING ROSES

CLIMBING AMERICAN BEAUTY—Brilliant scarlet. 65c each; 3 for \$1.75.

GARDENIA—Best climbing yellow. 75c each; 3 for \$1.75.

MME. GREGOIRE STAECHLIN (The Spanish Beauty)—Bright clear pink—very handsome. Highly recommended. \$1.00 each; 3 for \$2.50.

SILVER MOON—Beautiful single white. 60c each; 3 for \$1.50.

SPECIAL COLLECTION OF SIX MAGNIFICENT ROSES

One strong 2-year old plant of each:

Pink Radiance, Red Radiance, Sensation, Souvenir de Claudius Pernet, Talisman and Frau Karl Druschki. Each labeled and well packed. Value, \$4.60—ALL FOR \$3.50, postpaid.