

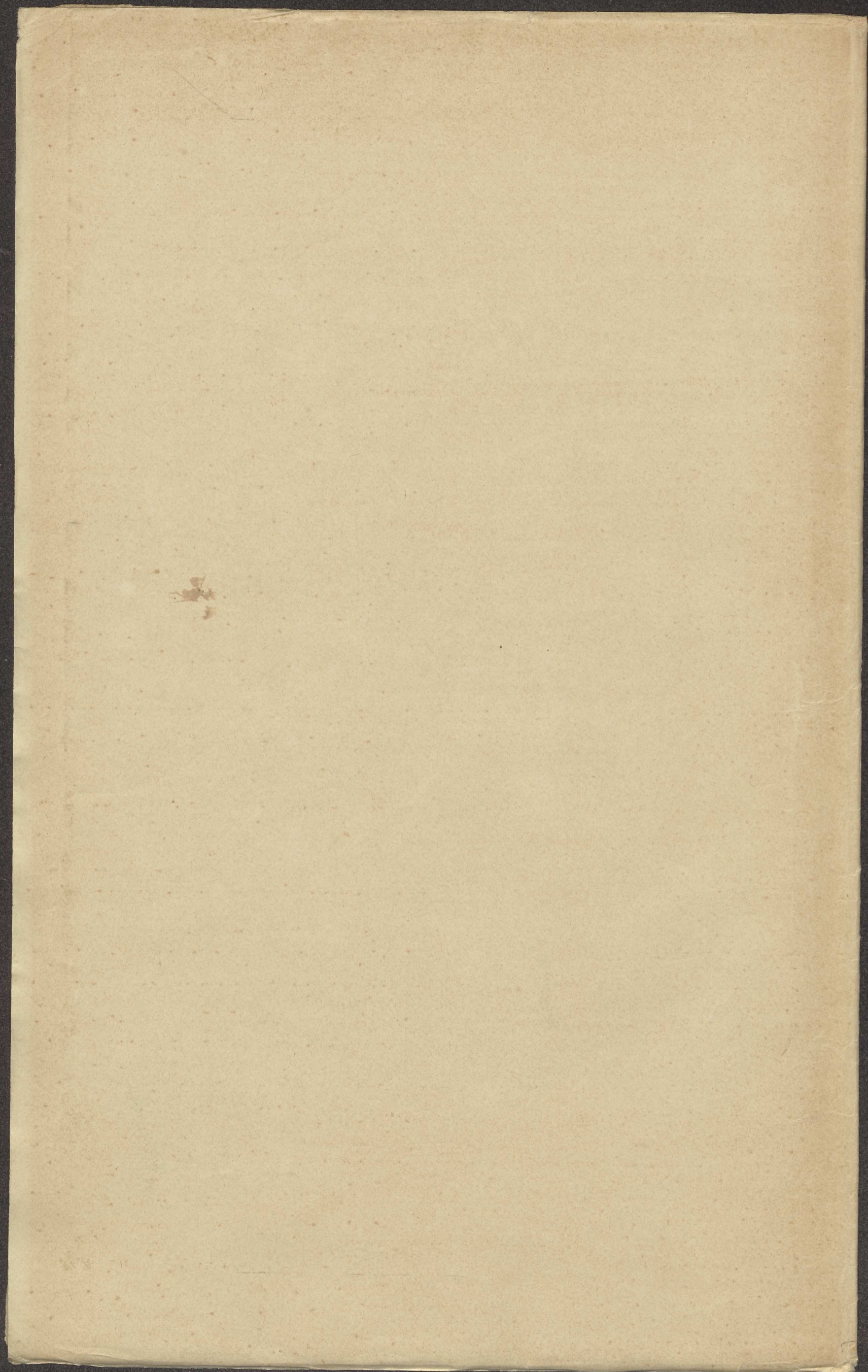
1004

Oud nr. 383

Satwa.

(Pakang Raras)

M.S. Or. 4480.



l'art de l'écriture

Handwritten text in Khmer script, consisting of approximately 25 lines of dense characters.

1

Widjet

logos

dufys

supijay

mekon

sapies

mitjau

hijje

man

logos

pat

103

12

altaxer

Handwritten notes in the right margin, including the number 103.

Handwritten Burmese text, likely a religious or historical document. The script is a form of the Burmese alphabet. The text is arranged in vertical columns.

Handwritten notes in a different script, possibly Dutch, with some markings.

Handwritten notes in a different script, possibly Dutch.

Handwritten notes in a different script, possibly Dutch.

Handwritten notes in a different script, possibly Dutch.

Handwritten notes in a different script, possibly Dutch.

Handwritten notes in a different script, possibly Dutch.

Handwritten notes in a different script, possibly Dutch.

Handwritten notes in a different script, possibly Dutch.

Handwritten notes in a different script, possibly Dutch.

Handwritten notes in a different script, possibly Dutch.

Handwritten notes in a different script, possibly Dutch.

Handwritten Burmese text on the right page, continuing from the left page. It consists of vertical columns of script.

Handwritten notes in a different script, possibly Dutch.

Handwritten notes in a different script, possibly Dutch.

Handwritten notes in a different script, possibly Dutch.

Handwritten notes in a different script, possibly Dutch.

Handwritten notes in a different script, possibly Dutch.

Handwritten notes in a different script, possibly Dutch, with some crossed-out lines.

Handwritten notes in a different script, possibly Dutch.

Handwritten notes in a different script, possibly Dutch.

Handwritten notes in a different script, possibly Dutch.

Handwritten notes in a different script, possibly Dutch.

Handwritten notes in a different script, possibly Dutch.

Handwritten notes in a different script, possibly Dutch.

Handwritten notes in a different script, possibly Dutch.

Handwritten Burmese text on the left page, consisting of approximately 25 lines of script.

Handwritten notes in the top right margin of the left page.

Handwritten note: *hote 1/2*

Handwritten note: *data*

Handwritten note: *hote*

Handwritten note: *hane - p. v. hane*

Handwritten note: *radikane tipu*

Handwritten note: *Kas*

Handwritten note: *spil sel*

Handwritten note: *unf. 1/2*

Handwritten Burmese text on the right page, consisting of approximately 25 lines of script.

Handwritten notes in the top right margin of the right page.

Handwritten note: *gajul natar l.*

Handwritten note: *hote*

Handwritten note: *data*

Handwritten note: *hote*

Handwritten note: *mangalve. hui in gajul*

Handwritten note: *hote*

Handwritten text in a script, likely Burmese, covering the left page of the manuscript. The text is arranged in approximately 20 horizontal lines.

betet
dijel nadit
tridid

waras: eka

wakawir
gubukay

tdu
nubijon

titiid

trunf upu
mumal al huy

lax dan
tambiridawin

deyo: impayin
uchel u belog
stebel = wust
estfider (m
stididhan)

mal

ngulid, phelid meach

ngungin
Am v ngungin
of mangin

Handwritten text in a script, likely Burmese, covering the right page of the manuscript. The text is arranged in approximately 20 horizontal lines.

ngulid
dijel
mangulid
ana

mantif
ngulid
ngulid
ngulid

ragini

entaf

miral
kuda

pidenitiga
ri

dewet
ngardang

pidenitiga
dean
pandit
pa

lad
lela: pa
ly u ue
wufid
berfio

ngulid

ngula

