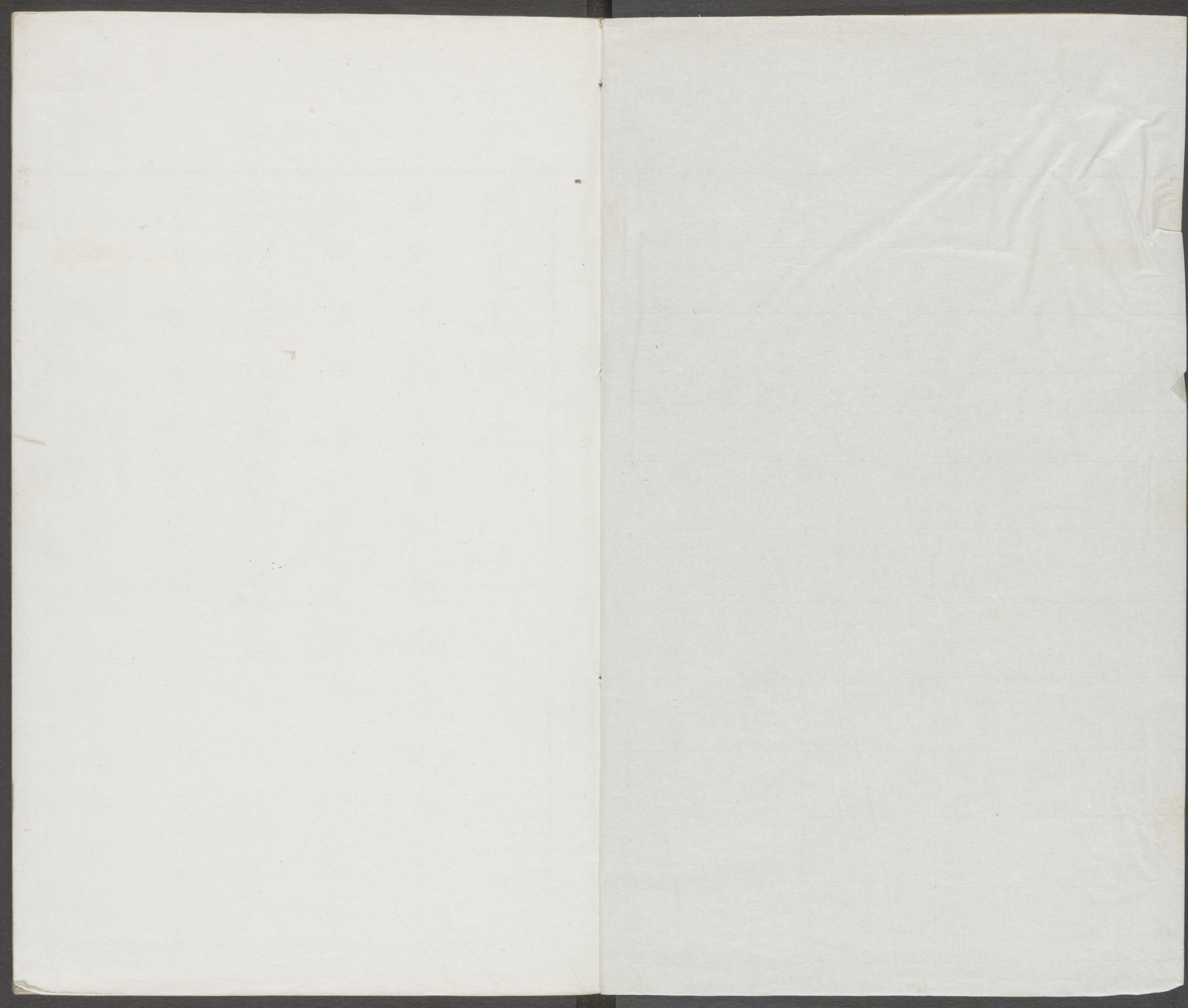


CHINESE-JAPANESE LIBRARY  
HARVARD-YENCHING INSTITUTE  
AT HARVARD UNIVERSITY

SEP. 28 1956

74614/4511 (1)



韓子迂評序

世有申韓之書何自而出也自劉向

班固皆以為法家者流本出於理官

之明罰敕法而刻者為之殘及至和

湯恩薄厚失其本矣竊以為不然此

治之衰也起於相勝而繁之作也