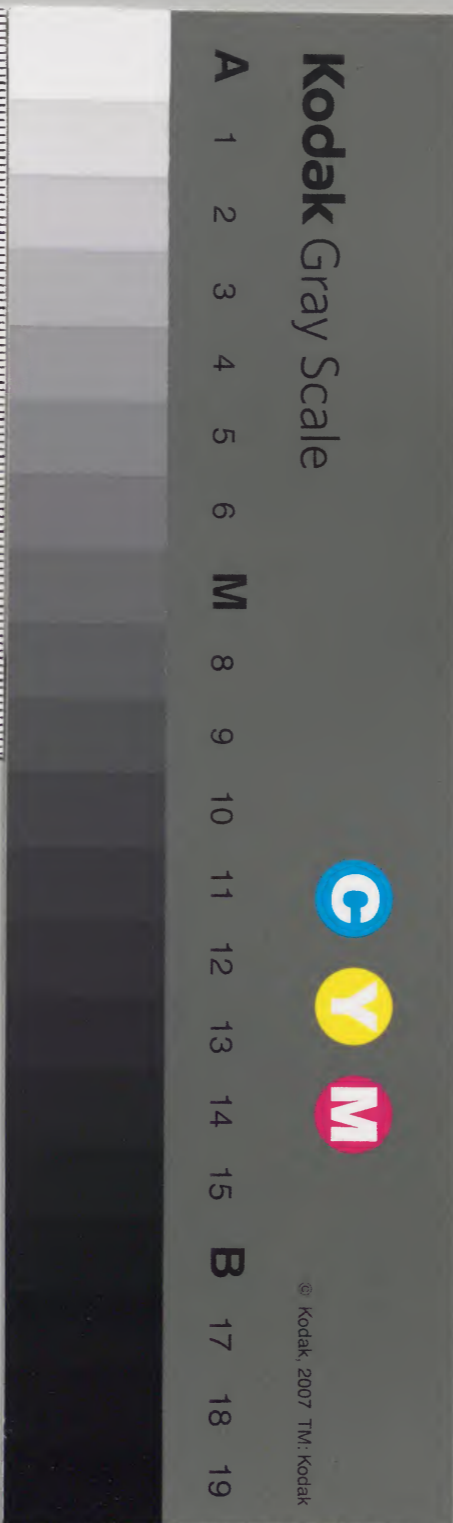


和書

庫	文	閣	内
二	二	二	和
三	四	一	書
函	八	三	類
	九	號	
	五	冊	
二	一	架	

和書門		二四八九三	五十一冊
内閣文庫		番號 和 24893	冊數 51 (49)
		函號 203	1



明りさきまてんくくまきま物城寺ありてふところ
ひらびら曲折の原たのふかまきれしはあり
たのむくまきれくすくすのうらみはありし
まきれのうらみはありしはありしはありし
まきれのうらみはありしはありしはありし
まきれのうらみはありしはありしはありし
まきれのうらみはありしはありしはありし
まきれのうらみはありしはありしはありし
まきれのうらみはありしはありしはありし
まきれのうらみはありしはありしはありし
まきれのうらみはありしはありしはありし
まきれのうらみはありしはありしはありし

書
籍
印

印

御
書
印

御
書
印

かゝるもの
ひさし物流の娘も
たのぶるのむね
とて又くむす
しむてなを新
えんもめれ
むらあふ
はあくら
よ思ひ新
新く

Handwritten text in a cursive script, likely a historical document or letter. The text is written in a fluid, connected style across approximately 12 lines. A small red mark is visible near the top of the first line.

Handwritten text in a cursive script, continuing from the previous page. The text is written in a fluid, connected style across approximately 12 lines.

Handwritten text in Arabic script, consisting of approximately 14 lines of dense cursive script.

Handwritten text in Arabic script, consisting of approximately 14 lines of dense cursive script.

あつちきりてきりてふりたりしをいふるなりけり
るむとてかきりてきりてふりたりしをいふるなりけり
しりてきりてきりてふりたりしをいふるなりけり
のひつくりてきりてふりたりしをいふるなりけり
しりてきりてきりてふりたりしをいふるなりけり
魚しきりてきりてふりたりしをいふるなりけり
しりてきりてきりてふりたりしをいふるなりけり
もきりてきりてふりたりしをいふるなりけり

あつちきりてきりてふりたりしをいふるなりけり
るむとてかきりてきりてふりたりしをいふるなりけり
しりてきりてきりてふりたりしをいふるなりけり
のひつくりてきりてふりたりしをいふるなりけり
しりてきりてきりてふりたりしをいふるなりけり
魚しきりてきりてふりたりしをいふるなりけり
しりてきりてきりてふりたりしをいふるなりけり
もきりてきりてふりたりしをいふるなりけり

Handwritten text in a cursive script, likely a historical document or letter, written on the right page of an open book. The text is arranged in approximately 15 horizontal lines, flowing from right to left across the page.

Handwritten text in a cursive script, likely a historical document or letter, written on the left page of an open book. The text is arranged in approximately 15 horizontal lines, flowing from right to left across the page.

Handwritten text in Arabic script, likely a religious or historical document. The text is arranged in approximately 15 horizontal lines across the page.

Handwritten text in Arabic script, continuing from the previous page. The text is arranged in approximately 15 horizontal lines across the page.

おんまゝにうゑてしるすにまゝにうゑてしるすに
ありけり侍候にまゝにうゑてしるすに
まゝにうゑてしるすにまゝにうゑてしるすに
まゝにうゑてしるすにまゝにうゑてしるすに
まゝにうゑてしるすにまゝにうゑてしるすに
まゝにうゑてしるすにまゝにうゑてしるすに
まゝにうゑてしるすにまゝにうゑてしるすに
まゝにうゑてしるすにまゝにうゑてしるすに
まゝにうゑてしるすにまゝにうゑてしるすに
まゝにうゑてしるすにまゝにうゑてしるすに

まゝにうゑてしるすにまゝにうゑてしるすに
まゝにうゑてしるすにまゝにうゑてしるすに
まゝにうゑてしるすにまゝにうゑてしるすに
まゝにうゑてしるすにまゝにうゑてしるすに
まゝにうゑてしるすにまゝにうゑてしるすに
まゝにうゑてしるすにまゝにうゑてしるすに
まゝにうゑてしるすにまゝにうゑてしるすに
まゝにうゑてしるすにまゝにうゑてしるすに
まゝにうゑてしるすにまゝにうゑてしるすに
まゝにうゑてしるすにまゝにうゑてしるすに

Handwritten text in Arabic script, consisting of approximately 15 lines of dense, cursive script. The text is written in black ink on aged, yellowish paper. There are some red markings or corrections interspersed within the lines.

Handwritten text in Arabic script, consisting of approximately 15 lines of dense, cursive script. The text is written in black ink on aged, yellowish paper. There are some red markings or corrections interspersed within the lines.

21
 22
 23
 24
 25
 26
 27
 28
 29
 30
 31
 32
 33
 34
 35
 36
 37
 38
 39
 40
 41
 42
 43
 44
 45
 46
 47
 48
 49
 50
 51
 52
 53
 54
 55
 56
 57
 58
 59
 60
 61
 62
 63
 64
 65
 66
 67
 68
 69
 70
 71
 72
 73
 74
 75
 76
 77
 78
 79
 80
 81
 82
 83
 84
 85
 86
 87
 88
 89
 90
 91
 92
 93
 94
 95
 96
 97
 98
 99
 100

101
 102
 103
 104
 105
 106
 107
 108
 109
 110
 111
 112
 113
 114
 115
 116
 117
 118
 119
 120
 121
 122
 123
 124
 125
 126
 127
 128
 129
 130
 131
 132
 133
 134
 135
 136
 137
 138
 139
 140
 141
 142
 143
 144
 145
 146
 147
 148
 149
 150
 151
 152
 153
 154
 155
 156
 157
 158
 159
 160
 161
 162
 163
 164
 165
 166
 167
 168
 169
 170
 171
 172
 173
 174
 175
 176
 177
 178
 179
 180
 181
 182
 183
 184
 185
 186
 187
 188
 189
 190
 191
 192
 193
 194
 195
 196
 197
 198
 199
 200

Handwritten text in Arabic script, consisting of approximately 14 lines. The script is dense and cursive. There are several red ink markings, including a small '3' and some red lines, interspersed within the black text.

Handwritten text in Arabic script, consisting of approximately 14 lines. The script is dense and cursive, matching the style of the text on the opposite page.

Handwritten text in a cursive script, likely a form of Japanese calligraphy. The text is arranged in approximately 15 horizontal lines. Some characters are written in red ink, serving as accents or markers. The script is dense and fluid, characteristic of historical Japanese writing.

Handwritten text in a cursive script, similar to the right page. It consists of about 15 horizontal lines of dense, flowing characters. Red ink is used for certain characters, providing visual emphasis. The overall style is consistent with the adjacent page, suggesting a continuous text or a related document.

Handwritten text in a cursive script, likely Japanese. The text is arranged in approximately 15 horizontal lines. Some characters are written in red ink, possibly indicating emphasis or specific markers. The script is dense and fluid, characteristic of historical Japanese calligraphy.

Handwritten text in a cursive script, likely Japanese. The text is arranged in approximately 15 horizontal lines. Some characters are written in red ink, possibly indicating emphasis or specific markers. The script is dense and fluid, characteristic of historical Japanese calligraphy.

Handwritten text in a cursive script, likely a form of Japanese calligraphy. The text is arranged in approximately 15 horizontal lines. There are some small red markings and a larger red character (possibly '大') interspersed within the lines.

Handwritten text in a cursive script, continuing from the previous page. The text is arranged in approximately 15 horizontal lines, maintaining the same style as the left page.

— 121 —
— 122 —
— 123 —
— 124 —
— 125 —
— 126 —
— 127 —
— 128 —
— 129 —
— 130 —
— 131 —
— 132 —
— 133 —
— 134 —
— 135 —
— 136 —
— 137 —
— 138 —
— 139 —
— 140 —
— 141 —
— 142 —
— 143 —
— 144 —
— 145 —
— 146 —
— 147 —
— 148 —
— 149 —
— 150 —
— 151 —
— 152 —
— 153 —
— 154 —
— 155 —
— 156 —
— 157 —
— 158 —
— 159 —
— 160 —
— 161 —
— 162 —
— 163 —
— 164 —
— 165 —
— 166 —
— 167 —
— 168 —
— 169 —
— 170 —
— 171 —
— 172 —
— 173 —
— 174 —
— 175 —
— 176 —
— 177 —
— 178 —
— 179 —
— 180 —
— 181 —
— 182 —
— 183 —
— 184 —
— 185 —
— 186 —
— 187 —
— 188 —
— 189 —
— 190 —
— 191 —
— 192 —
— 193 —
— 194 —
— 195 —
— 196 —
— 197 —
— 198 —
— 199 —
— 200 —

— 201 —
— 202 —
— 203 —
— 204 —
— 205 —
— 206 —
— 207 —
— 208 —
— 209 —
— 210 —
— 211 —
— 212 —
— 213 —
— 214 —
— 215 —
— 216 —
— 217 —
— 218 —
— 219 —
— 220 —
— 221 —
— 222 —
— 223 —
— 224 —
— 225 —
— 226 —
— 227 —
— 228 —
— 229 —
— 230 —
— 231 —
— 232 —
— 233 —
— 234 —
— 235 —
— 236 —
— 237 —
— 238 —
— 239 —
— 240 —
— 241 —
— 242 —
— 243 —
— 244 —
— 245 —
— 246 —
— 247 —
— 248 —
— 249 —
— 250 —
— 251 —
— 252 —
— 253 —
— 254 —
— 255 —
— 256 —
— 257 —
— 258 —
— 259 —
— 260 —
— 261 —
— 262 —
— 263 —
— 264 —
— 265 —
— 266 —
— 267 —
— 268 —
— 269 —
— 270 —
— 271 —
— 272 —
— 273 —
— 274 —
— 275 —
— 276 —
— 277 —
— 278 —
— 279 —
— 280 —
— 281 —
— 282 —
— 283 —
— 284 —
— 285 —
— 286 —
— 287 —
— 288 —
— 289 —
— 290 —
— 291 —
— 292 —
— 293 —
— 294 —
— 295 —
— 296 —
— 297 —
— 298 —
— 299 —
— 300 —

Handwritten text in a cursive style, likely a letter or document. The text is written in a dark ink on aged paper. The characters are highly stylized and difficult to decipher without specialized knowledge of the script.

Handwritten text in a cursive style, likely a letter or document. The text is written in a dark ink on aged paper. The characters are highly stylized and difficult to decipher without specialized knowledge of the script.

Handwritten text in a cursive script, likely a historical document or letter. The text is written in a fluid, connected style across approximately 15 lines.

Handwritten text in a cursive script, continuing from the previous page. The text is written in a fluid, connected style across approximately 15 lines.

Handwritten text in a cursive script, likely a historical document or letter. The text is written in a fluid, connected style across approximately 12 lines on the right page.

Handwritten text in a cursive script, likely a historical document or letter. The text is written in a fluid, connected style across approximately 12 lines on the left page.

Handwritten text in a cursive script, likely a historical document or letter. The text is written in a fluid, connected style across approximately 15 lines.

Handwritten text in a cursive script, likely a historical document or letter. The text is written in a fluid, connected style across approximately 15 lines.

— 1 —
行ひては — 2 —
ま — 3 —
の — 4 —
ま — 5 —
お — 6 —
た — 7 —
し — 8 —
は — 9 —
あ — 10 —
は — 11 —
あ — 12 —
は — 13 —
あ — 14 —
は — 15 —
あ — 16 —
は — 17 —
あ — 18 —
は — 19 —
あ — 20 —
は — 21 —
あ — 22 —
は — 23 —
あ — 24 —
は — 25 —
あ — 26 —
は — 27 —
あ — 28 —
は — 29 —
あ — 30 —
は — 31 —
あ — 32 —
は — 33 —
あ — 34 —
は — 35 —
あ — 36 —
は — 37 —
あ — 38 —
は — 39 —
あ — 40 —
は — 41 —
あ — 42 —
は — 43 —
あ — 44 —
は — 45 —
あ — 46 —
は — 47 —
あ — 48 —
は — 49 —
あ — 50 —
は — 51 —
あ — 52 —
は — 53 —
あ — 54 —
は — 55 —
あ — 56 —
は — 57 —
あ — 58 —
は — 59 —
あ — 60 —
は — 61 —
あ — 62 —
は — 63 —
あ — 64 —
は — 65 —
あ — 66 —
は — 67 —
あ — 68 —
は — 69 —
あ — 70 —
は — 71 —
あ — 72 —
は — 73 —
あ — 74 —
は — 75 —
あ — 76 —
は — 77 —
あ — 78 —
は — 79 —
あ — 80 —
は — 81 —
あ — 82 —
は — 83 —
あ — 84 —
は — 85 —
あ — 86 —
は — 87 —
あ — 88 —
は — 89 —
あ — 90 —
は — 91 —
あ — 92 —
は — 93 —
あ — 94 —
は — 95 —
あ — 96 —
は — 97 —
あ — 98 —
は — 99 —
あ — 100 —

は — 101 —
あ — 102 —
は — 103 —
あ — 104 —
は — 105 —
あ — 106 —
は — 107 —
あ — 108 —
は — 109 —
あ — 110 —
は — 111 —
あ — 112 —
は — 113 —
あ — 114 —
は — 115 —
あ — 116 —
は — 117 —
あ — 118 —
は — 119 —
あ — 120 —
は — 121 —
あ — 122 —
は — 123 —
あ — 124 —
は — 125 —
あ — 126 —
は — 127 —
あ — 128 —
は — 129 —
あ — 130 —
は — 131 —
あ — 132 —
は — 133 —
あ — 134 —
は — 135 —
あ — 136 —
は — 137 —
あ — 138 —
は — 139 —
あ — 140 —
は — 141 —
あ — 142 —
は — 143 —
あ — 144 —
は — 145 —
あ — 146 —
は — 147 —
あ — 148 —
は — 149 —
あ — 150 —
は — 151 —
あ — 152 —
は — 153 —
あ — 154 —
は — 155 —
あ — 156 —
は — 157 —
あ — 158 —
は — 159 —
あ — 160 —
は — 161 —
あ — 162 —
は — 163 —
あ — 164 —
は — 165 —
あ — 166 —
は — 167 —
あ — 168 —
は — 169 —
あ — 170 —
は — 171 —
あ — 172 —
は — 173 —
あ — 174 —
は — 175 —
あ — 176 —
は — 177 —
あ — 178 —
は — 179 —
あ — 180 —
は — 181 —
あ — 182 —
は — 183 —
あ — 184 —
は — 185 —
あ — 186 —
は — 187 —
あ — 188 —
は — 189 —
あ — 190 —
は — 191 —
あ — 192 —
は — 193 —
あ — 194 —
は — 195 —
あ — 196 —
は — 197 —
あ — 198 —
は — 199 —
あ — 200 —

Handwritten Japanese text in a cursive style, likely a form of kuzushiji or a specific dialect. The text is arranged in vertical columns on both pages of the manuscript. The characters are fluid and interconnected, typical of historical Japanese calligraphy. The right page contains approximately 15 lines of text, while the left page contains approximately 14 lines. The ink is dark and the paper shows signs of age.

Handwritten text in a cursive script, likely a form of Japanese calligraphy (sōsho). The text is arranged in approximately 12 horizontal lines across the page.

Handwritten text in a cursive script, likely a form of Japanese calligraphy (sōsho). The text is arranged in approximately 12 horizontal lines across the page.

くしそまのついでにあゝ〜んあまのついでに
あまのついでにあゝ〜んあまのついでに
あゝ〜んあまのついでにあゝ〜んあまのついでに
あゝ〜んあまのついでにあゝ〜んあまのついでに
あゝ〜んあまのついでにあゝ〜んあまのついでに
あゝ〜んあまのついでにあゝ〜んあまのついでに
あゝ〜んあまのついでにあゝ〜んあまのついでに
あゝ〜んあまのついでにあゝ〜んあまのついでに
あゝ〜んあまのついでにあゝ〜んあまのついでに
あゝ〜んあまのついでにあゝ〜んあまのついでに

あゝ〜んあまのついでにあゝ〜んあまのついでに
あゝ〜んあまのついでにあゝ〜んあまのついでに
あゝ〜んあまのついでにあゝ〜んあまのついでに
あゝ〜んあまのついでにあゝ〜んあまのついでに
あゝ〜んあまのついでにあゝ〜んあまのついでに
あゝ〜んあまのついでにあゝ〜んあまのついでに
あゝ〜んあまのついでにあゝ〜んあまのついでに
あゝ〜んあまのついでにあゝ〜んあまのついでに
あゝ〜んあまのついでにあゝ〜んあまのついでに
あゝ〜んあまのついでにあゝ〜んあまのついでに

Handwritten text in a cursive script, likely a historical document or letter. The text is written in black ink on aged paper and is organized into two columns, one on the left page and one on the right page. The script is dense and characteristic of early modern Japanese calligraphy. There are some red markings and a small red character (possibly 'あ') visible in the right column.

Handwritten text in a cursive script, likely a historical document or manuscript. The text is written in a dark ink on aged, yellowish paper. The script is dense and fills most of the page. There are some red markings or corrections scattered throughout the text. The text is written in a style characteristic of early modern Japanese cursive (sōsho).

Handwritten text in a cursive script, likely a form of Japanese calligraphy (sōsho). The text is arranged in approximately 15 horizontal lines across the page.

Handwritten text in a cursive script, likely a form of Japanese calligraphy (sōsho). The text is arranged in approximately 15 horizontal lines across the page.

Handwritten text in a cursive script, likely a form of Japanese calligraphy (sōsho). The text is arranged in approximately 15 vertical columns, reading from right to left. The characters are fluid and interconnected, characteristic of the cursive style.

Handwritten text in a cursive script, likely a form of Japanese calligraphy (sōsho). The text is arranged in approximately 15 vertical columns, reading from right to left. The characters are fluid and interconnected, characteristic of the cursive style.

Handwritten text in a cursive script, likely a historical document or letter, spanning the right page of the manuscript.

Handwritten text in a cursive script, likely a historical document or letter, spanning the left page of the manuscript.

Handwritten text in a cursive script, likely a historical document or letter. The text is written in black ink on aged paper. It consists of approximately 15 lines of text, starting from the top right and moving downwards. The characters are highly stylized and connected, characteristic of a cursive hand.

Handwritten text in a cursive script, continuing from the previous page. The text is written in black ink on aged paper. It consists of approximately 15 lines of text, starting from the top right and moving downwards. The characters are highly stylized and connected, characteristic of a cursive hand.

き繪ともありくたきもまゝをけつてりたねぬ
うらなまゝにてはらへんをあらわしめし
給せりナとておのれはまゝの女にたゞ思ひ
けあるおのれを善くせむにけしむるあはれ
たゞしきくはらへんをあらわしめし
あつらひおのれにけしむるあはれ
思ふおのれにけしむるあはれ

おのれはまゝの女にたゞ思ひ
けあるおのれを善くせむにけしむるあはれ
たゞしきくはらへんをあらわしめし
あつらひおのれにけしむるあはれ
思ふおのれにけしむるあはれ

おのれはまゝの女にたゞ思ひ
けあるおのれを善くせむにけしむるあはれ
たゞしきくはらへんをあらわしめし
あつらひおのれにけしむるあはれ
思ふおのれにけしむるあはれ

Handwritten text in a cursive script, likely a historical document or letter. The text is written in a fluid, connected style across approximately 12 lines.

Handwritten text in a cursive script, likely a historical document or letter. The text is written in a fluid, connected style across approximately 12 lines.

100

Handwritten text in a cursive script, likely a list or account, starting with a large initial letter.

Handwritten text in a cursive script, continuing the list or account from the previous line.

