

GHQ/SCAP Records (RG 331, National Archives and Records Service)

Description of contents

- (1) Box no. 2939
- (2) Folder title/number: (26)
Toyo Bearing Mfg. Co. - Mukogawa Plant

(3) Date: ?

(4) Subject:

Classification	Type of record
9230, 9621	r

(5) Item description and comment:

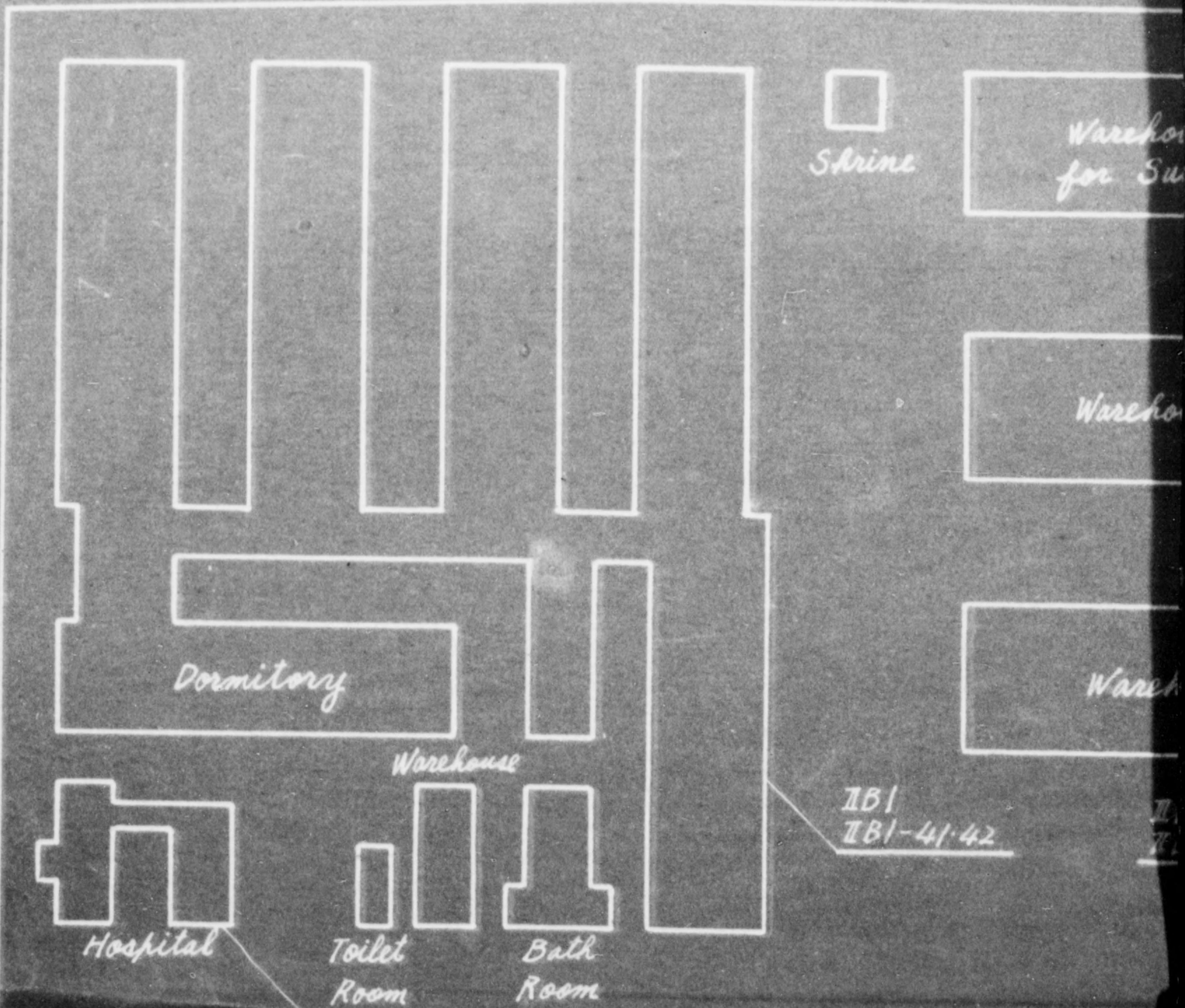
Hyogo

(6) Reproduction: Yes No

(7) Film no.

Sheet no.

(Compiled by *National Diet Library*)



Shrine

Warehouse for Su

Warehouse

Warehouse

Dormitory

Warehouse

Hospital

Toilet Room

Bath Room

IB1
IB1-41-42

Line Slot

IB1

IC1 IC2 IC4

Warehouse
for Sundries

Oil Warehouse

W.C.

3rd Machine

Warehouse

Material
Warehouse

Warehouse

IB1-44

W.C.

W.C.

IB1-29-34

IB1-41-42

IB2
IB1-35-37

Was used for
Packing
House

Was used
for
Electing
Shop

W.C.

2nd
Pump Room

IB1-38-39

IB1-40

IA5. IA6
 IA9-94 IA2-47-52 IB1-25-28
 IA6-167-172 174-179 183-190 192-194 197-208 210-212
 IA6-114-140 143-145 147 148 150 151 154-164 166
 IA3-6 IA5-58-67 69-81 85

IB2-1
 IB1-22-24

IC2
 IB1-18-21 IB1-6
 IC2-18 IC4-3
 IB3-3-4 IB4-1

W.C.

3rd Machine Shop

1st
 Pump Room

W.C.

4th Machine Shop

Boiler Room

IB1-49-51

IA5
 IB1-55-57

W.C.

W.C.

W.C.

W.C.

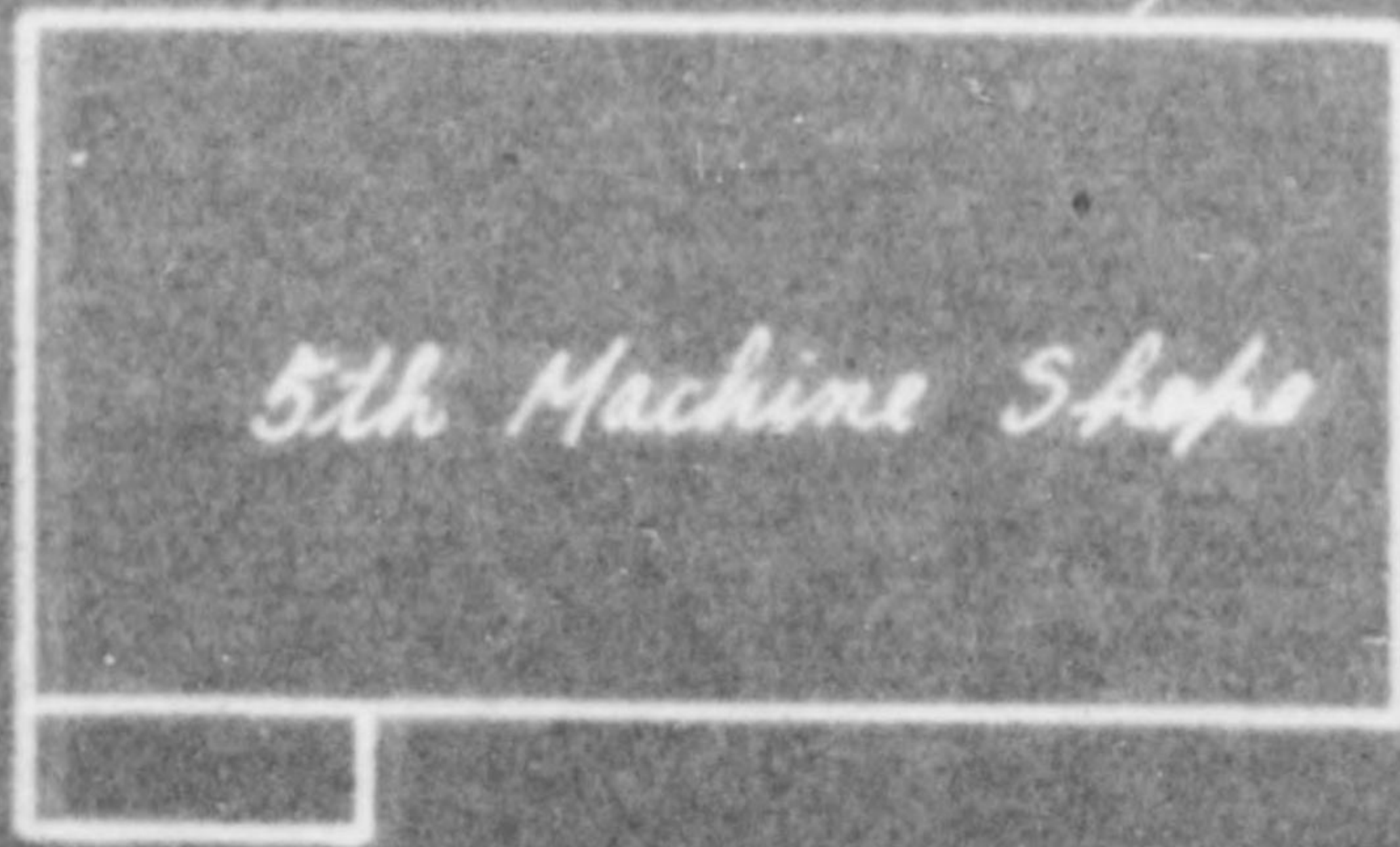
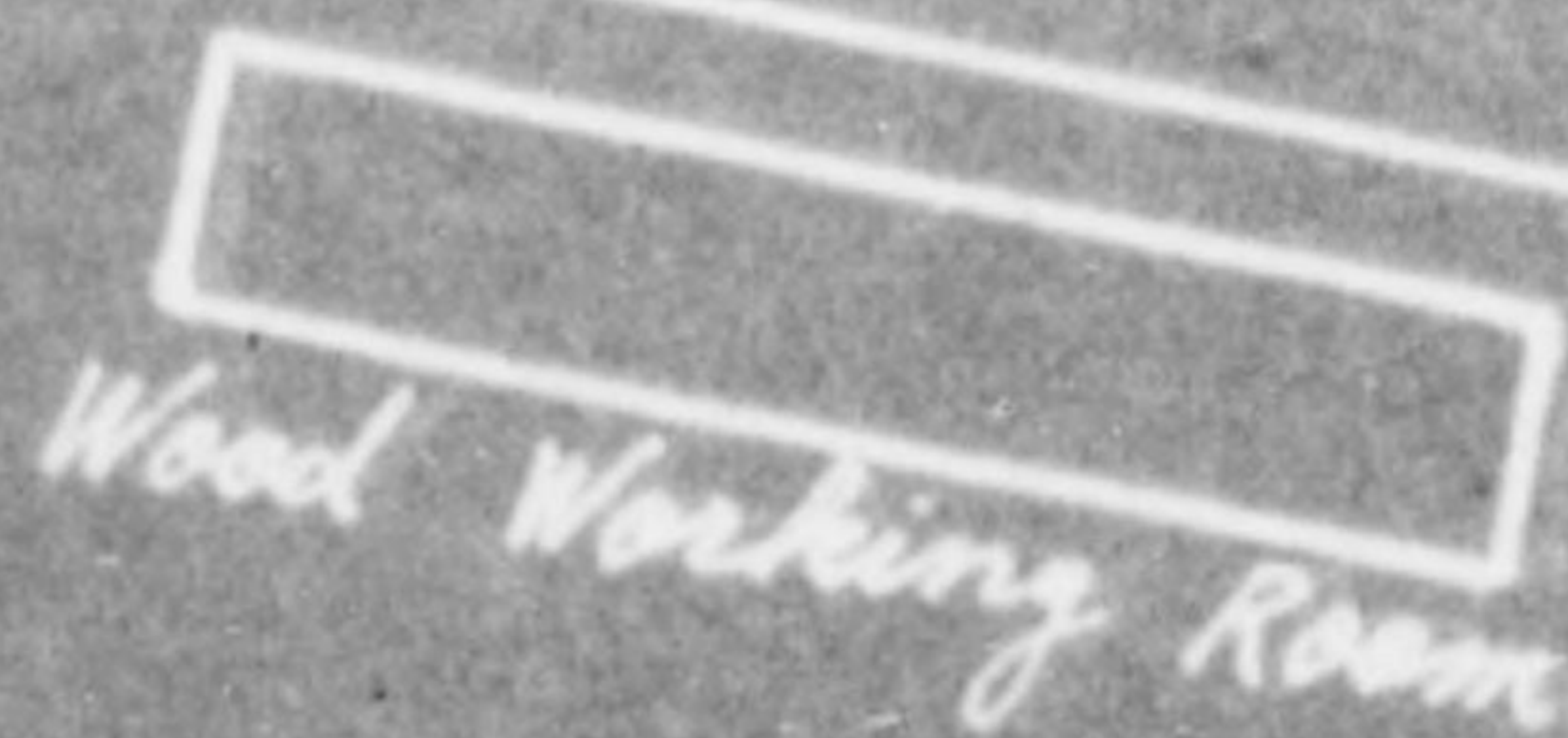
Was used
 for
 Grinding Shop

used
 ng
 k

18-21 IBI-6
18 IC4-3
3-4 IB4-1

IBI
IBI-16-17 IBI-2-5
IC4-1-2 IA2-72

Boiler Room



W.C.

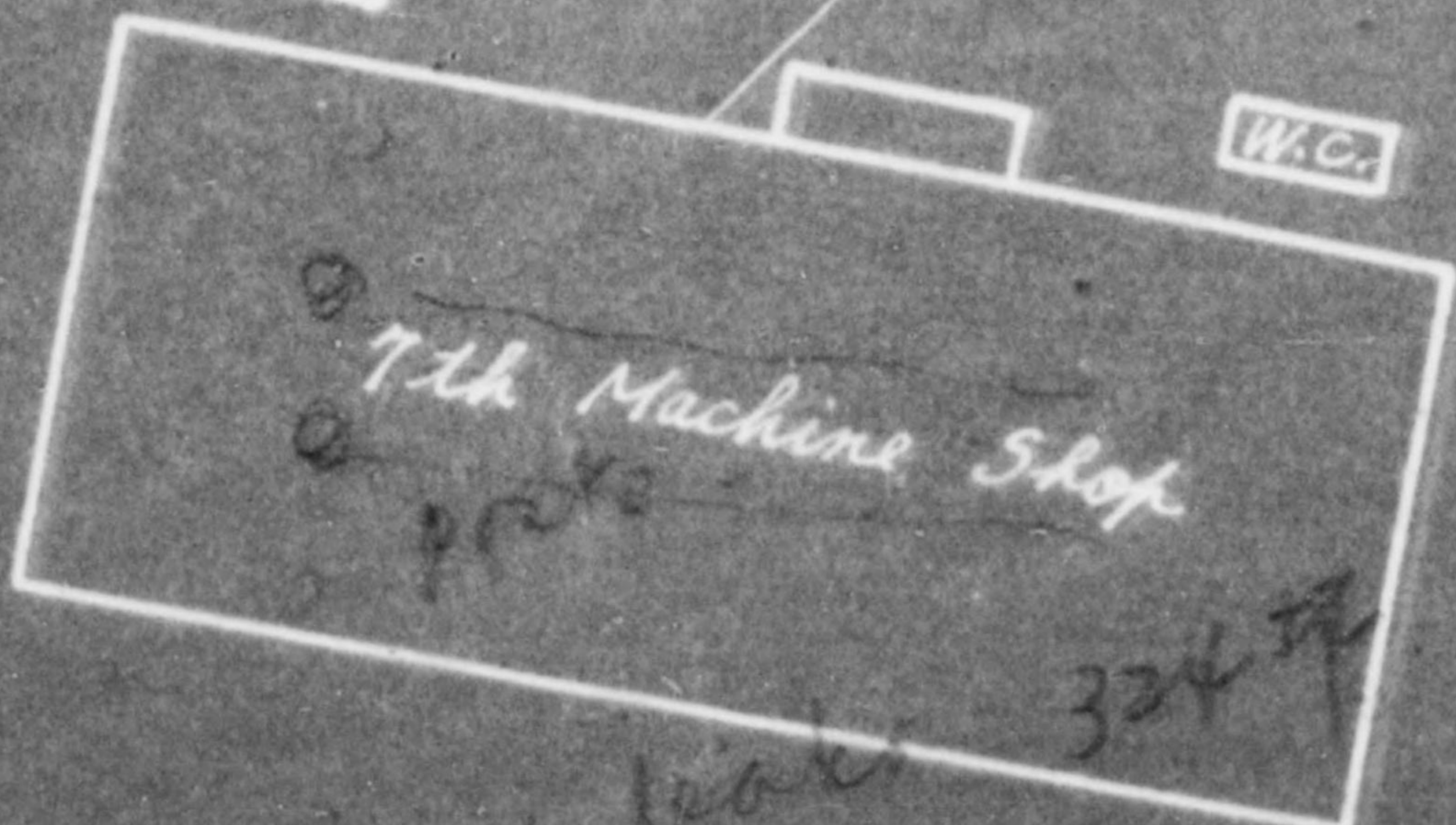


6th Machine Shop

IC2
IB2-23
IC2-1-2-17

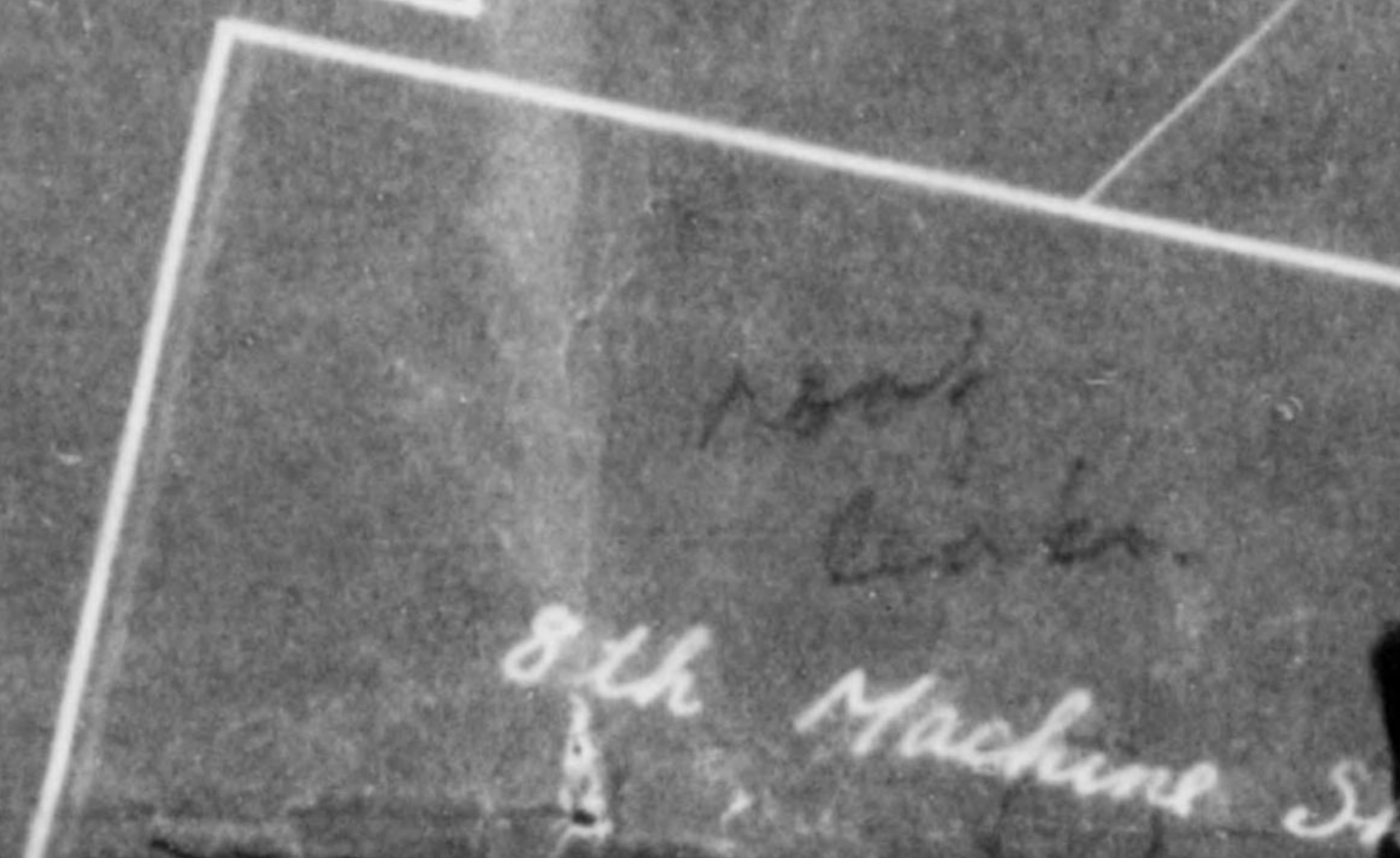
IA6
IB1-13-15
IA9-92-93 IA2-41-46
IA6-36-113 IA7-1
IA3-2-5 IA5-47-57

W.C.



W.C.

W.C.



Toyo Bear

Locative W

222

310

IA3. IA5. IA6
 IB1-2~12. 72. 91~95
 IA2-1~40. 94. IA3-1.2
 IA6-1~35. IA9-1~91
 IA3-1. IA5-1-3. 5~8. 11. 14~29. 32. 34~46

W.C.

W.C.

IB1-1.



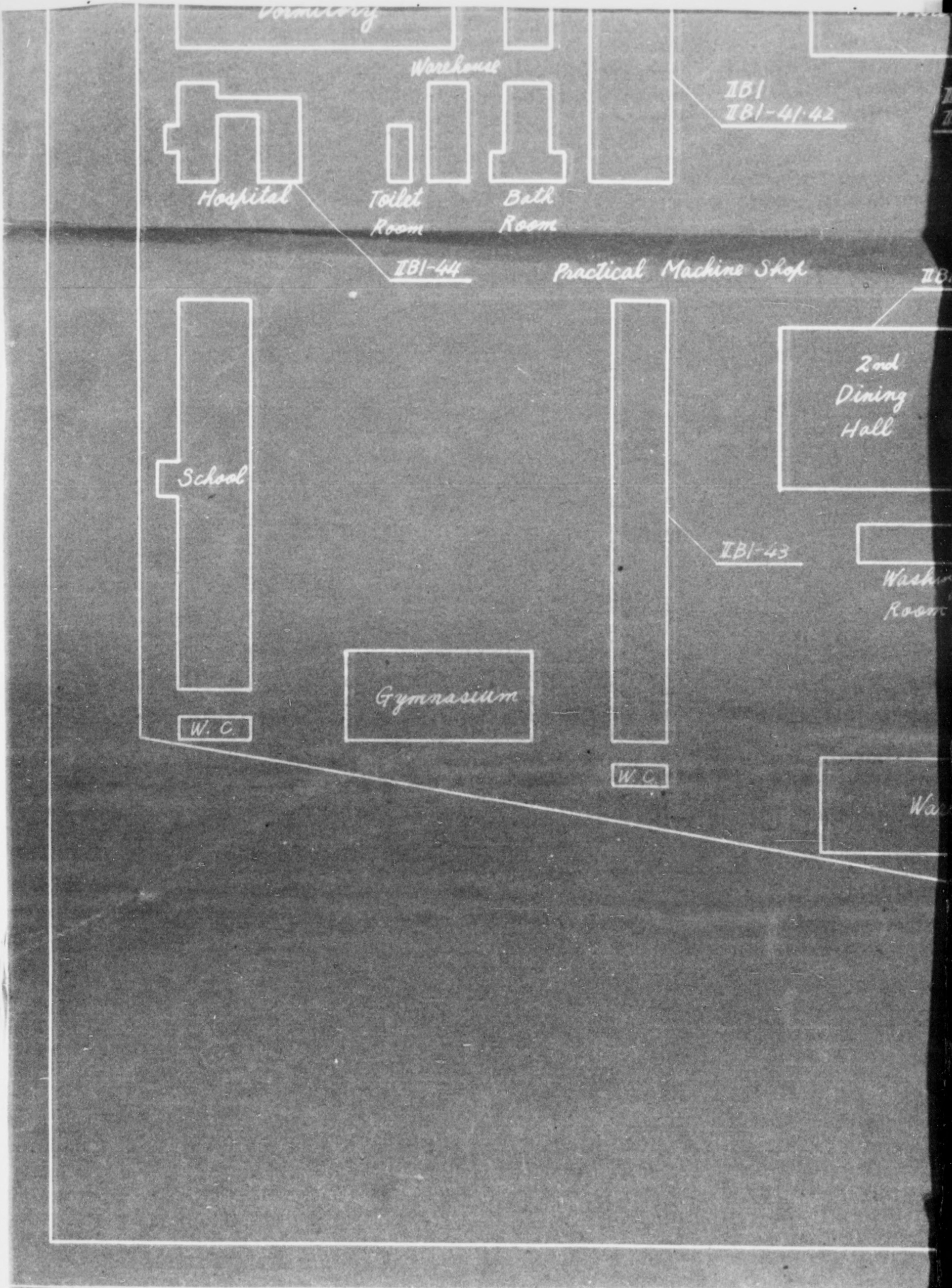
only
 marks. vto
 8th Machine Shop

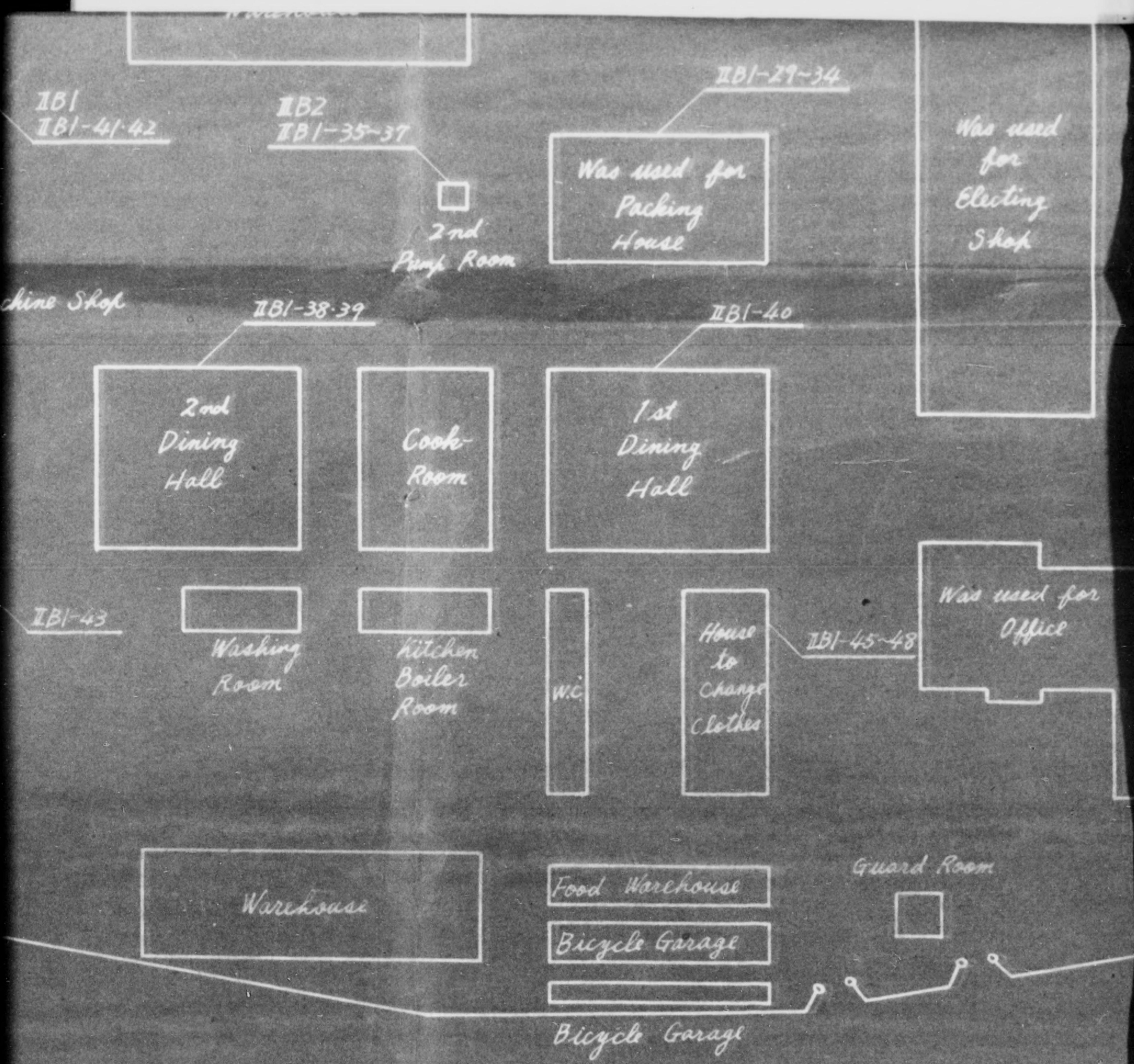
Co.; *Ltd. Mukogawa Plant.*

e Inventoried Machines.

h Dec. 1947.

1:1000





Was used for
Electing
Shop

Was used
for
Grinding Shop

W.C.

Was used for
Office

2nd Machine Warehouse

Was used for
Tool Shop

Power Distribution
House

Book Warehouse

Tool
Forging Shop

Garage

Room

IB2-1~8
IB1-58-64

IA3
IC4-4 IB1-52~54
IA7-2 IA8-1
IA6-213~217
IA3-7 IA5-86~88

Room	Machine Room
6th Machine Shop	

1st Machine Warehouse

2nd Machine Shop

W.C.

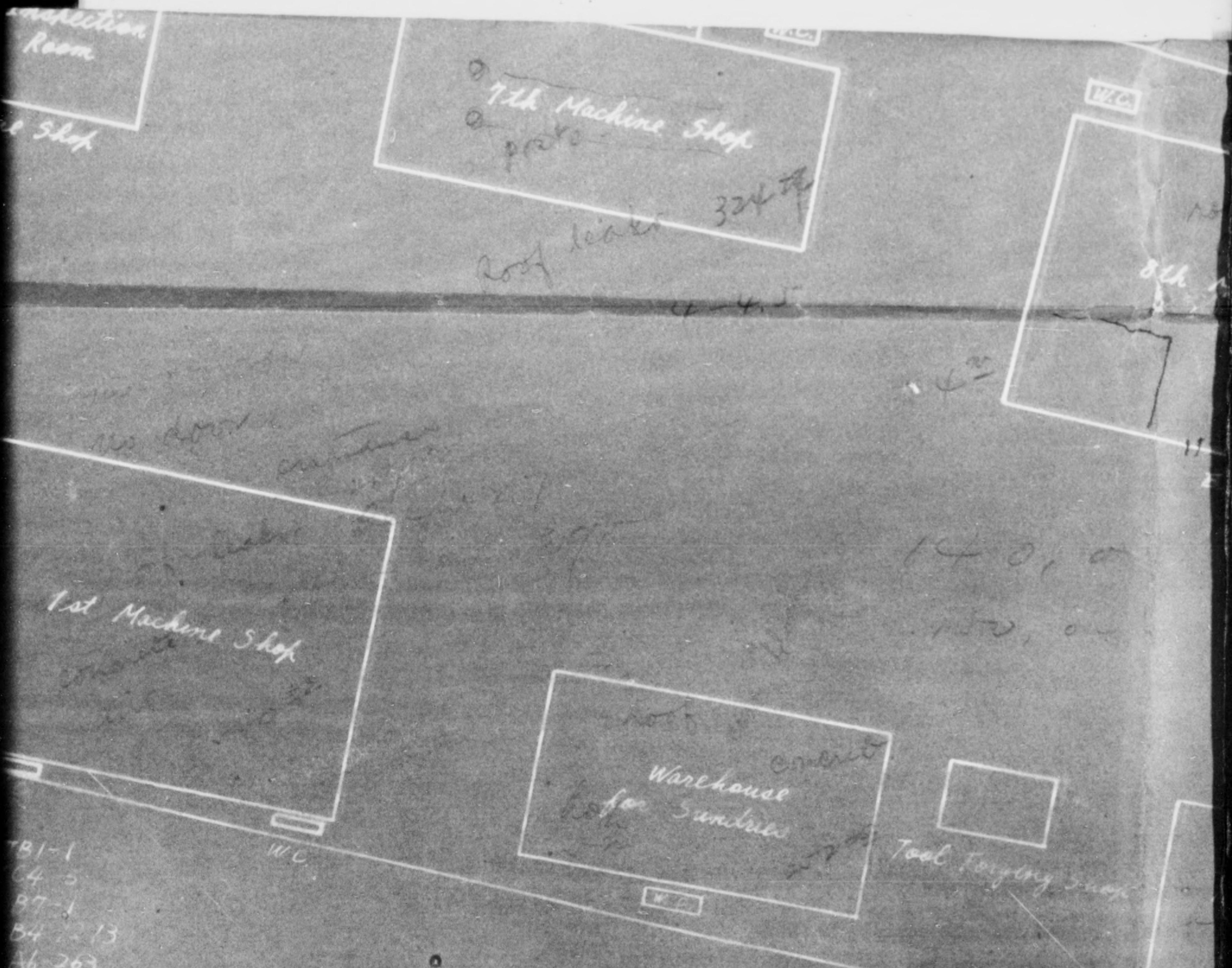
W.C.

IB2-1~8
IB1-58-64

~54
6~88

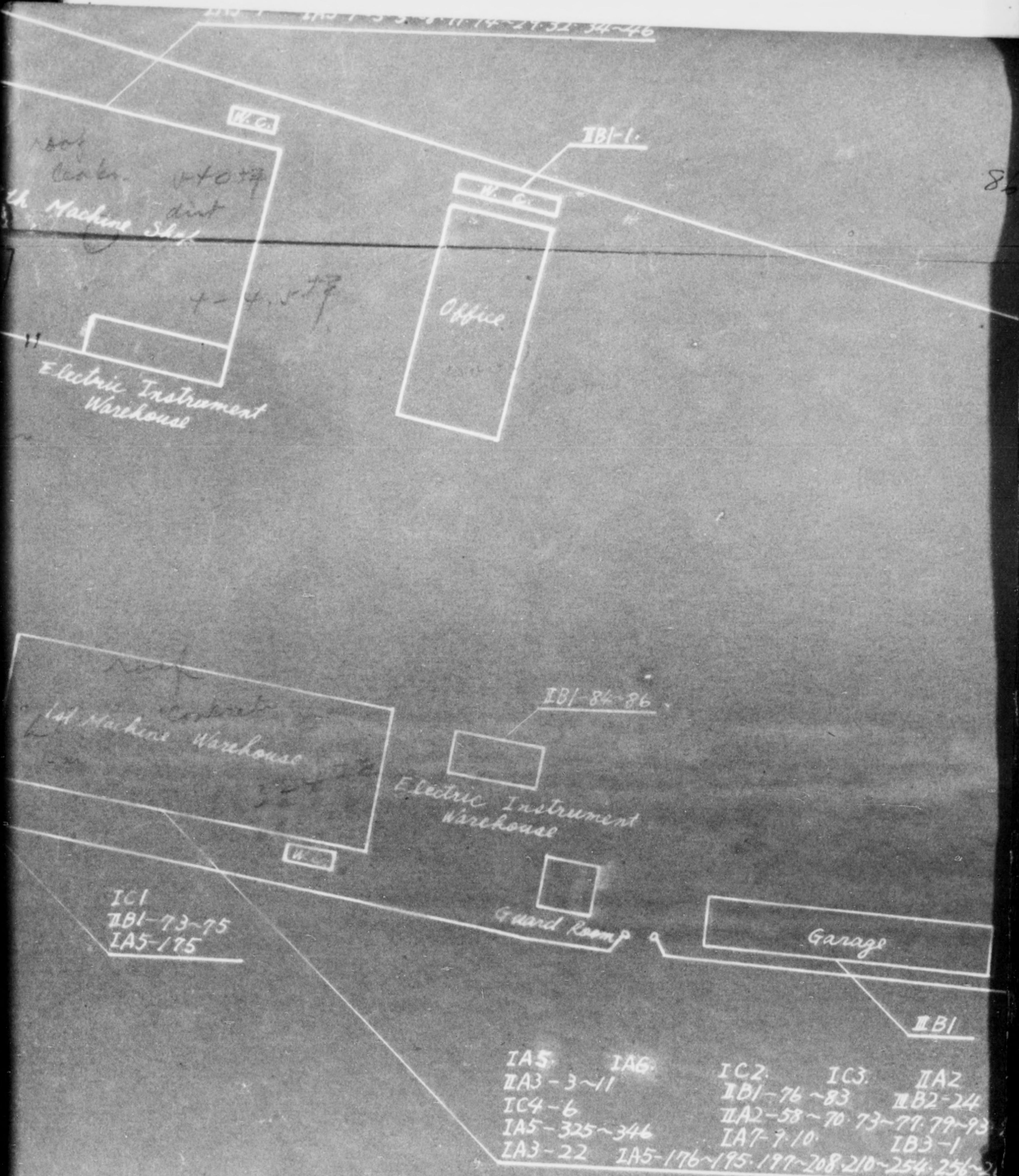
IA3	IB1-68	IB1-
IB9-3		IC4
IB6-23		IB7-
IA9-99-100		IB4-
IA5-136-138		IA6-2

IA3	IA5	IA6	IA7	IA9	IB4	IC3	IC4
IB1-65-67		IB1-7-15		IB7-2-20			
IB6-1		IB9-12		IC2-3-16			
IA9-95-98		IB3-5-21		IB4-2-11			
IA6-218-262		IA7-3-8		IA8-2			
IA3-8-18		IA5-89-110-115-135					

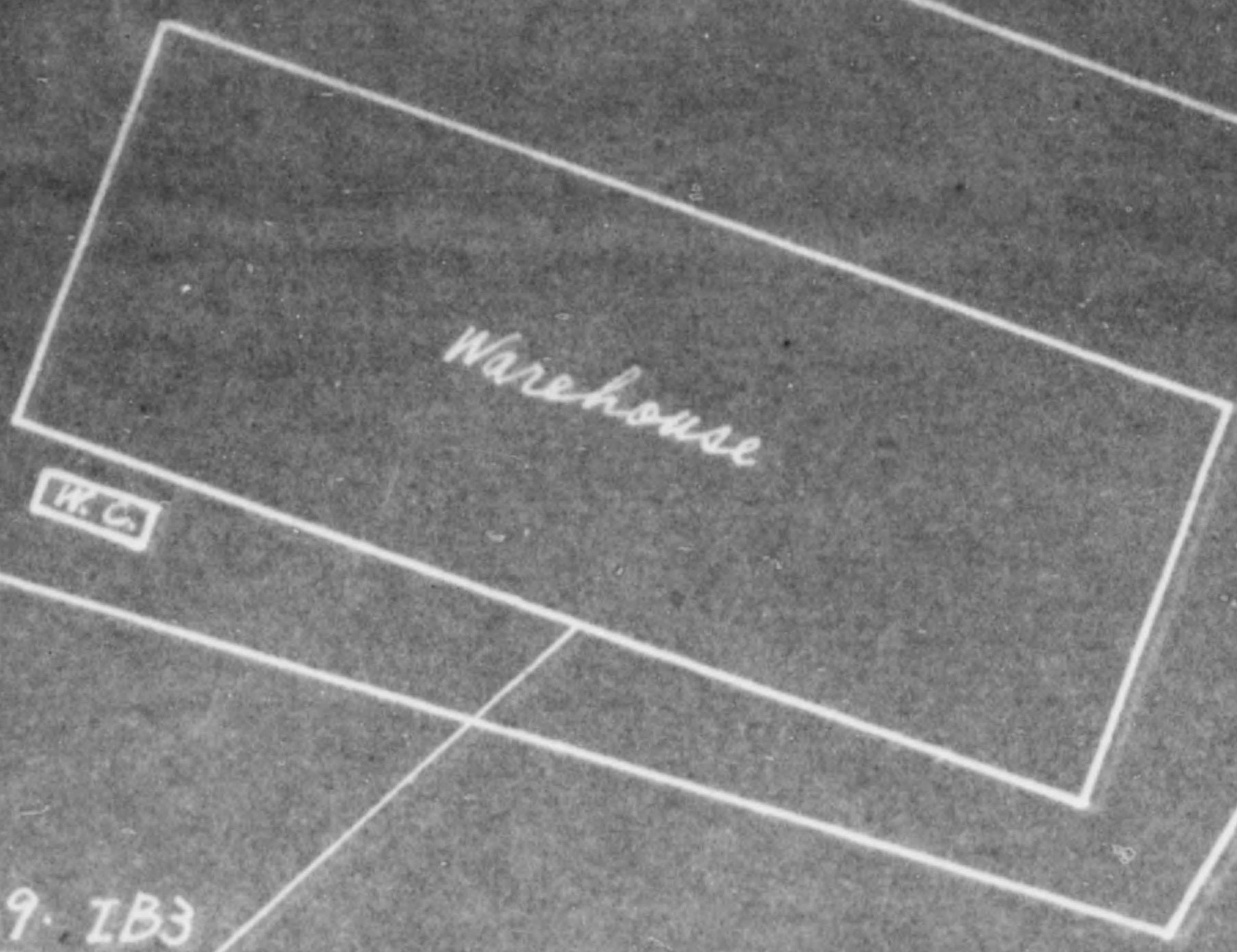


B1-1
 C4-5
 B7-1
 B4-13
 A6-263

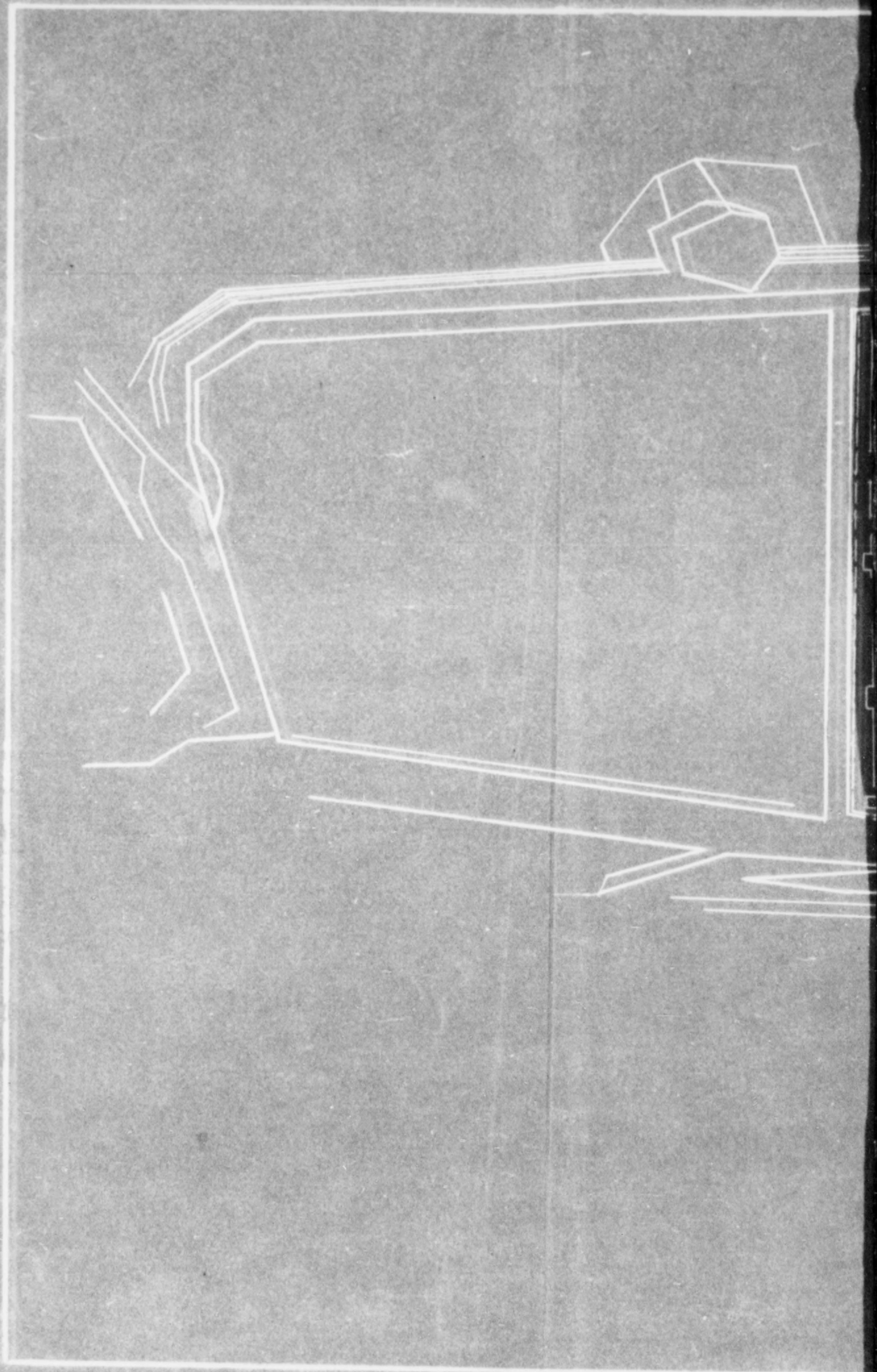
IA5- IA6
 IA2-53-57-78 IB1-69-71 IB2-21-22
 IA7-101-120 IB3-2 IC3-1
 IA6-180-182-191-193-195-196-209-264-324
 IA6-141-142-146-149-152-153-165-168-171-173
 IA5-82-84-111-114-139-174-196-209-255-263-265
 IA3-19-21 IA5-49-10-12-13-30-31-33-68

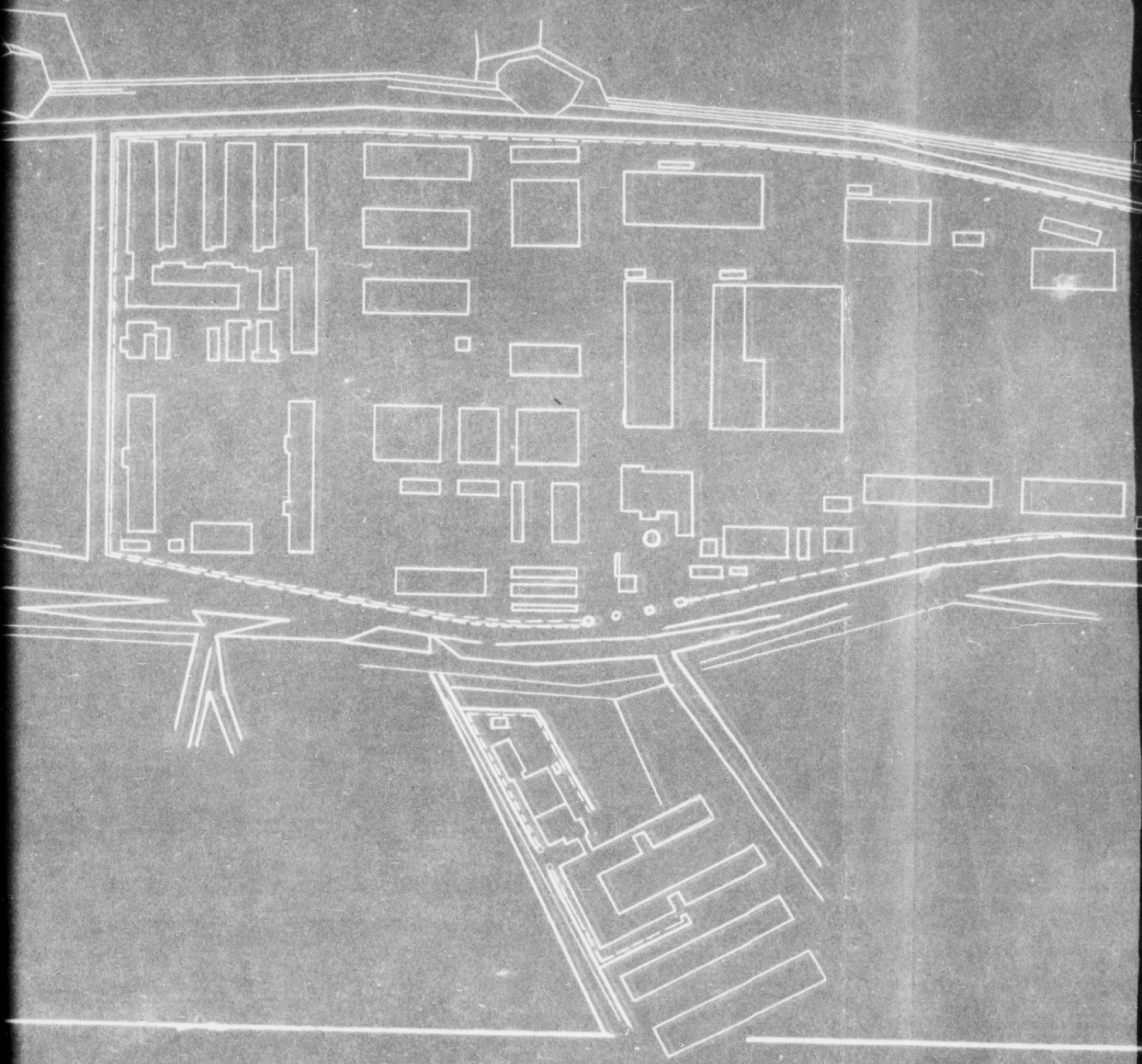


IA9	IB2	IB6	IC3
IA2-71		IB1-87-90	
IA9-121-122		IB6-4-16	
IA5-287-288		IA6-347-349	



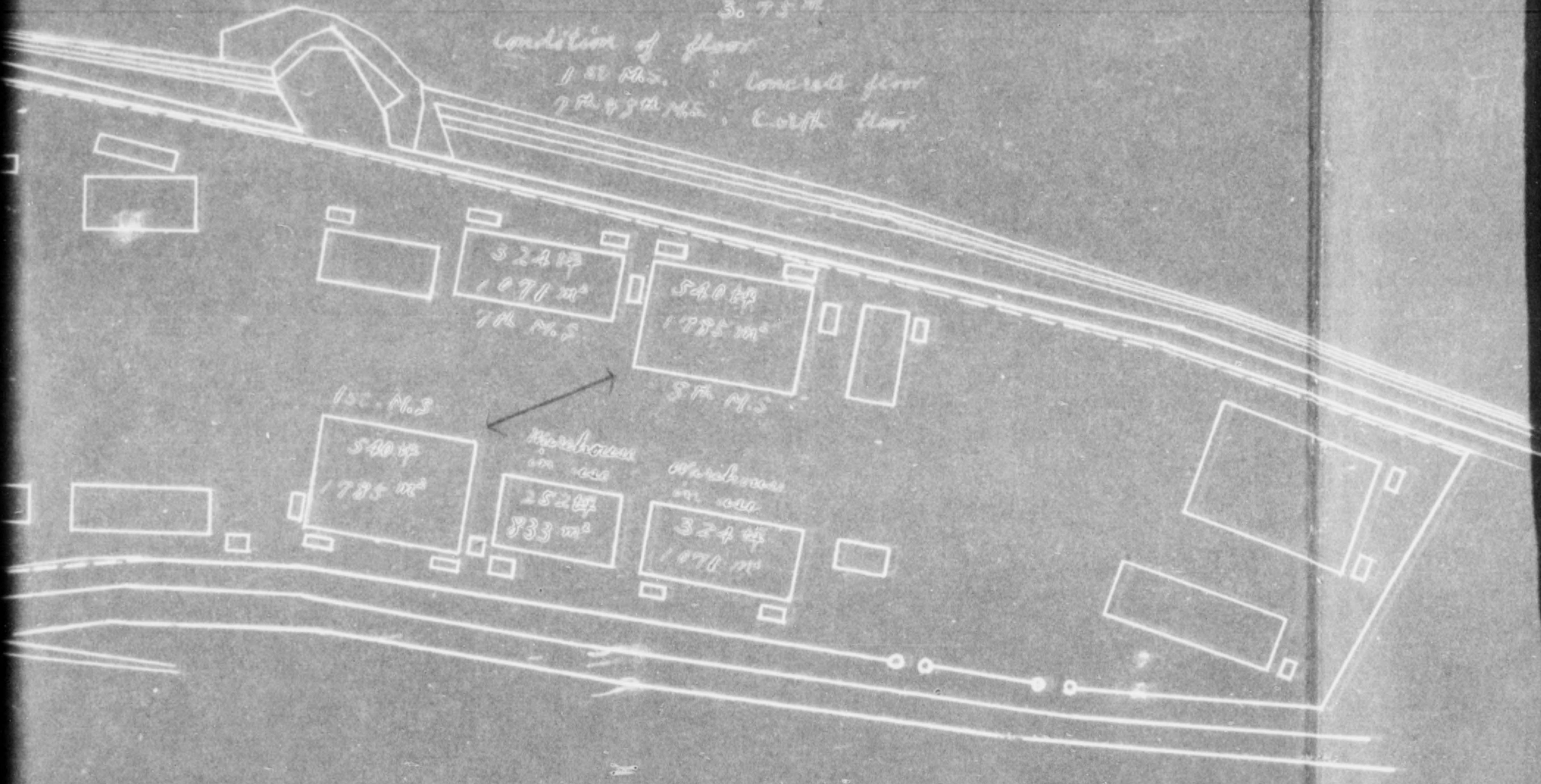
IA9-IB3





Entrance of 1st. 1st 2nd 4.2
 Width : 2.7 m
 Height : 2.7 m
 Floor to cross-beam :
 3.75 m

Condition of floor
 1.50 m. : concrete floor
 7.00 m. : earth floor



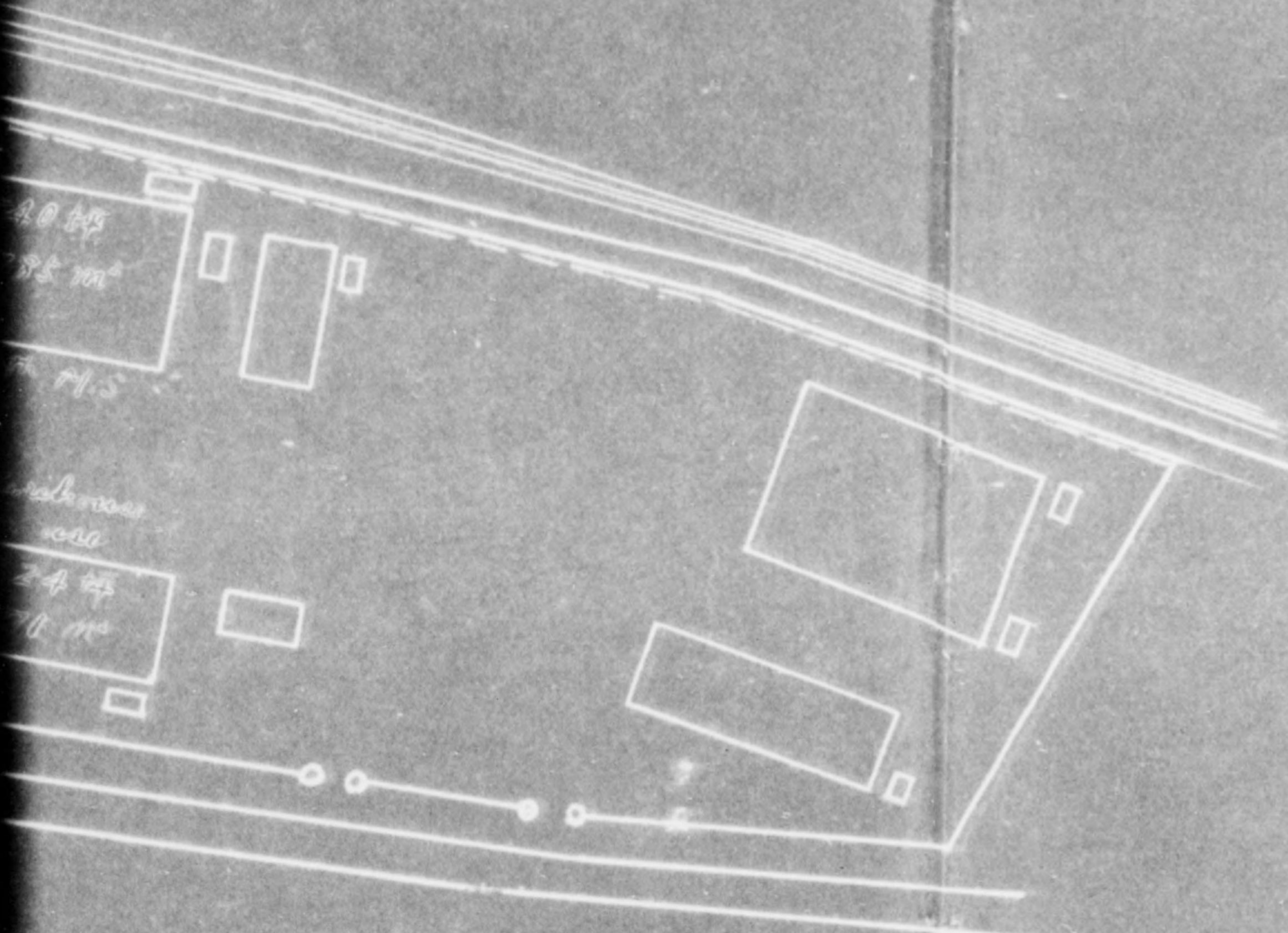
Toyo Bearing Mfg. Co. Ltd.
 Maibayashi Plant

東洋ベアリング製造株式会社

武蔵川工場配置図

縮尺 1/2000

1st, 2nd, 3rd fls.
 2.7 m
 2.7 m
 3.75 m
 1st floor
 2nd floor
 3rd floor



Toyo Bearing Mfg. Co. Ltd.
 Maibara Plant
 東洋ベアリング製造株式会社
 武蔵川工場配置図
 縮尺 1/2000