

Rebound 1948

HARVARD UNIVERSITY



LIBRARY

OF THE

MUSEUM OF COMPARATIVE ZÖÖLOGY

7527

New Series, No. CI.

Price 10s.

7527

Dec. 18. 1885

NOVEMBER, 1885

THE
QUARTERLY JOURNAL
OF
MICROSCOPICAL SCIENCE.

EDITED BY

E. RAY LANKESTER, M.A., LL.D., F.R.S.,

*Fellow of Exeter College, Oxford, and Jodrell Professor of Zoology in University College,
London;*

WITH THE CO-OPERATION OF

W. T. THISELTON DYER, M.A., C.M.G., F.R.S.,

Assistant Director of the Royal Gardens, Kew,

E. KLEIN, M.D., F.R.S.,

*Joint-Lecturer on General Anatomy and Physiology in the Medical School of St. Bartholomew's Hospital,
London.*

H. N. MOSELEY, M.A., LL.D., F.R.S.,

Linacre Professor of Human and Comparative Anatomy in the University of Oxford,

AND

ADAM SEDGWICK, M.A.,

Fellow and Assistant-Lecturer of Trinity College, Cambridge.

WITH LITHOGRAPHIC PLATES AND ENGRAVINGS ON WOOD.



LONDON:

J. & A. CHURCHILL, 11, NEW BURLINGTON STREET.

MDCCCLXXXV.

CONTENTS OF No. CI.—New Series.

MEMOIRS:

	PAGE
On the Relations of the Yolk to the Gastrula in Teleosteans, and in other Vertebrate Types. By J. T. CUNNINGHAM, B.A., Fellow of University College, Oxford; Superintendent of the Scottish Marine Station. (With Plates I, II, III, and IV)	1
On the Structure and Function of the Sphæridia of the Echinoidea. By HOWARD AYERS, of Ann Arbor, Michigan, U.S. America. (With Plate V)	39
The Nerve Terminations in the Cutaneous Epithelium of the Tadpole. By A. B. MACALLUM, B.A., Fellow of University College, Toronto, Canada. (With Plate VI)	53
On Green Oysters. By E. RAY LANKESTER, M.A., LL.D., F.R.S., Jodrell Professor of Zoology in University College, London. (With Plate VII)	71
The System of Branchial Sense Organs and their Associated Ganglia in Ichthyopsida. A Contribution to the Ancestral History of Vertebrates. By JOHN BEARD, Ph.D., B.Sc., Berkeley Fellow of Owens College, Victoria University, Manchester. (With Plates VIII, IX, and X)	95

15
7-15

New Series, No. CII.

Price 10s.

7527
Apr. 3. 1886

FEBRUARY, 1886.

THE
QUARTERLY JOURNAL
OF
MICROSCOPICAL SCIENCE.

EDITED BY

E. RAY LANKESTER, M.A., LL.D., F.R.S.,
*Fellow of Exeter College, Oxford, and Jodrell Professor of Zoology in University College,
London;*

WITH THE CO-OPERATION OF

W. T. THISELTON DYER, M.A., C.M.G., F.R.S.,
Director of the Royal Gardens, Kew,

E. KLEIN, M.D., F.R.S.,
*Joint-Lecturer on General Anatomy and Physiology in the Medical School of St. Bartholomew's Hospital,
London.*

H. N. MOSELEY, M.A., LL.D., F.R.S.,
Linacre Professor of Human and Comparative Anatomy in the University of Oxford,

AND

ADAM SEDGWICK, M.A.,
Fellow and Assistant-Lecturer of Trinity College, Cambridge.

WITH LITHOGRAPHIC PLATES AND ENGRAVINGS ON WOOD.



LONDON:

J. & A. CHURCHILL, 11, NEW BURLINGTON STREET.

MDCCLXXXVI.

CONTENTS OF No. CII.—New Series.

MEMOIRS:

	PAGE
The Development of the Mole (<i>Talpa Europea</i>), the Ovarian Ovum, and Segmentation of the Ovum. By WALTER HEAPE, M.A., Demonstrator of Animal Morphology in the University of Cambridge. (With Plate XI)	157
The Development of the Cape Species of <i>Peripatus</i> . By ADAM SEDGWICK, M.A., Fellow of Trinity College, Cambridge. Part II. (With Plates XII, XIII and XIV)	175
Studies on Earthworms. By WILLIAM BLAXLAND BENHAM, B.Sc., Demonstrator in the Zoological Laboratory of University College, London (With Plates XV, XVI, and XVI <i>bis</i>)	213
The Official Refutation of Dr. Robert Koch's Theory of Cholera and Commas	303

New Series, No. CIII (Vol. XXVI, Part 3).

Price 10s.

7527
APRIL, 1886.

May 24, 1886.

THE
QUARTERLY JOURNAL
OF
MICROSCOPICAL SCIENCE.

EDITED BY

E. RAY LANKESTER, M.A., LL.D., F.R.S.,
*Fellow of Exeter College, Oxford, and Jodrell Professor of Zoology in University College,
London;*

WITH THE CO-OPERATION OF

W. T. THISELTON DYER, M.A., C.M.G., F.R.S.,
Director of the Royal Gardens, Kew,

E. KLEIN, M.D., F.R.S.,
*Joint-Lecturer on General Anatomy and Physiology in the Medical School of St. Bartholomew's Hospital,
London.*

H. N. MOSELEY, M.A., LL.D., F.R.S.,
Linacre Professor of Human and Comparative Anatomy in the University of Oxford,

AND

ADAM SEDGWICK, M.A.,
Fellow and Assistant-Lecturer of Trinity College, Cambridge.

WITH LITHOGRAPHIC PLATES AND ENGRAVINGS ON WOOD.



LONDON:

J. & A. CHURCHILL, 11, NEW BURLINGTON STREET.

MDCCCLXXXVI.

CONTENTS OF No. CIII.—New Series.

MEMOIRS:

	PAGE
The Leeches of Japan. By C. O. WHITMAN, Ph.D. Part I. (With Plates XVII, XVIII, XIX, XX and XXI)	317
Contributions to the Embryology of the Nemertea. By Prof. A. A. W. HUBRECHT, of Utrecht. (With Plate XXII)	417
The Early Development of <i>Julus terrestris</i> . By F. G. HEATHCOTE, M.A., Trinity College, Cambridge. (With Plates XXIII and XXIV)	449
On the Structure of the so-called Glandular Ventricle (Drüsenmagen) of <i>Syllis</i> . By WILLIAM A. HASWELL, M.A., B.Sc., Lecturer on Zoology and Comparative Anatomy, and Demonstrator of Histology, Sydney University. (With Plate XXV)	471
Carnoy's Cell Researches. By ARTHUR BOLLES LEE. (With Plate XXVI)	481
The Pleomorphism of the Schizophyta. By E. RAY LANKESTER, M.A., LL.D., F.R.S., Jodrell Professor of Zoology in University College, London	499

NOTICES OF NEW BOOKS:

Methods of Research in Microscopical Anatomy and Embryology. By CHARLES OTIS WHITMAN, M.A., Ph.D.	507
The Microtometist's Vade-mecum: a Handbook of the Methods of Microscopic Anatomy. By ARTHUR BOLLES LEE	507
The Rotifera, or Wheel Animalcules. By C. T. HUDSON, LL.D., assisted by P. H. GOSSE, F.R.S.	508

7527
Aug. 12, 1886

New Series, No. CIV (Vol. XXVI, Part 4).

Price 10s.

JUNE, 1886.

THE
QUARTERLY JOURNAL
OF
MICROSCOPICAL SCIENCE.

EDITED BY

E. RAY LANKESTER, M.A., LL.D., F.R.S.,
*Fellow of Exeter College, Oxford, and Jodrell Professor of Zoology in University College,
London;*

WITH THE CO-OPERATION OF

W. T. THISELTON DYER, M.A., C.M.G., F.R.S.,
Director of the Royal Gardens, Kew,

E. KLEIN, M.D., F.R.S.,
*Joint-Lecturer on General Anatomy and Physiology in the Medical School of St. Bartholomew's Hospital,
London.*

H. N. MOSELEY, M.A., LL.D., F.R.S.,
Linacre Professor of Human and Comparative Anatomy in the University of Oxford,

AND

ADAM SEDGWICK, M.A., F.R.S.,
Fellow and Assistant-Lecturer of Trinity College, Cambridge.

WITH LITHOGRAPHIC PLATES AND ENGRAVINGS ON WOOD.



LONDON:

J. & A. CHURCHILL, 11, NEW BURLINGTON STREET.

MDCCLXXXVI.

CONTENTS OF No. CIV.—New Series.

MEMOIRS:

	PAGE
Note on the Presence of a Neurenteric Canal in Rana. By HERBERT E. DURHAM, King's College, Cambridge. (With Plate XXVII) .	509
Continued Account of the Later Stages in the Development of Balanoglossus Kowalevskii, and of the Morphology of the Enteropneusta. By WILLIAM BATESON, M.A., Fellow of St. John's College, Cambridge. (With Plates XXVIII to XXXIII) .	511
The Ancestry of the Chordata. By WILLIAM BATESON, M.A., Fellow of St. John's College, Cambridge	535
Notes on the Development of the Newt (<i>Triton Cristatus</i>). By ALICE JOHNSON, Demonstrator of Biology, Newnham College, Cambridge, and LILIAN SHELDON, Bathurst Student, Newnham College, Cambridge. (With Plates XXXIV, XXXV, and XXXVI) .	573
Recent Researches on Oogenesis. By ARTHUR THOMSON	591
The Preparation of the Eye for Histological Examination. By JAMES W. BARRETT, M.B., Demonstrator of Physiology in King's College, London	607

TITLE, CONTENTS, and INDEX.

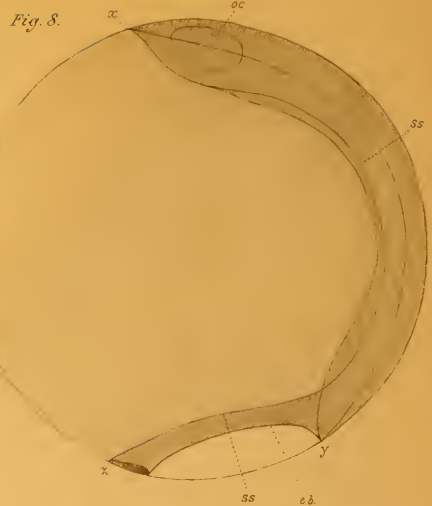
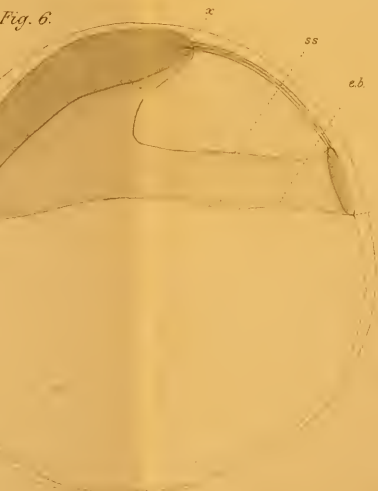
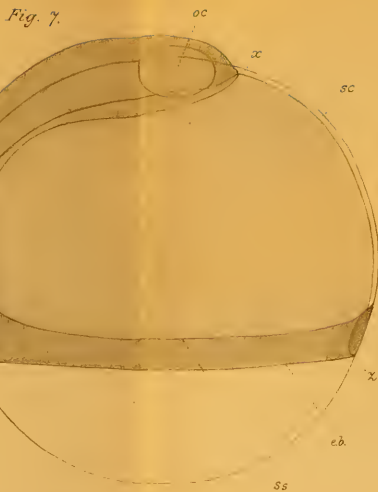
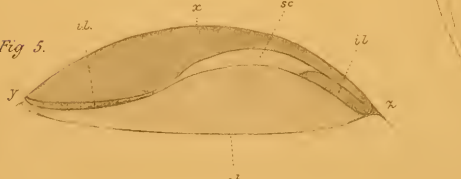
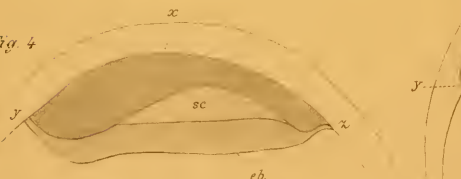
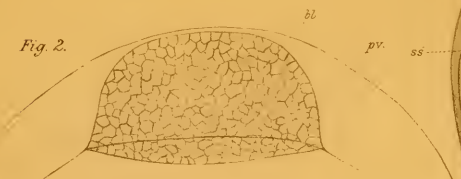
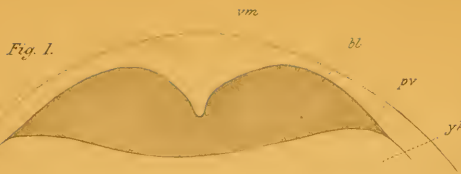


Fig. 10.

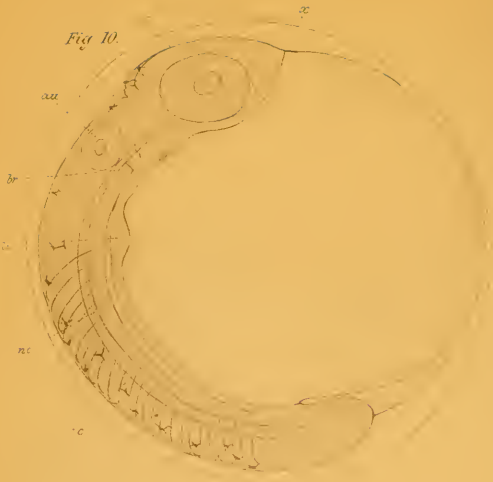


Fig. 11.

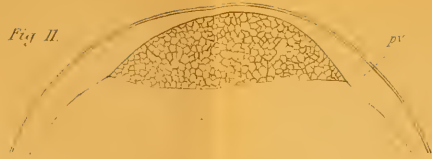


Fig. 16.



Fig. 13.

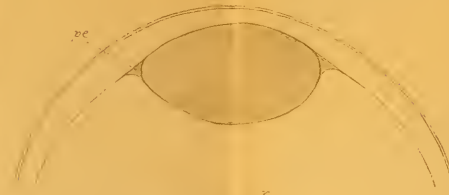


Fig. 17.

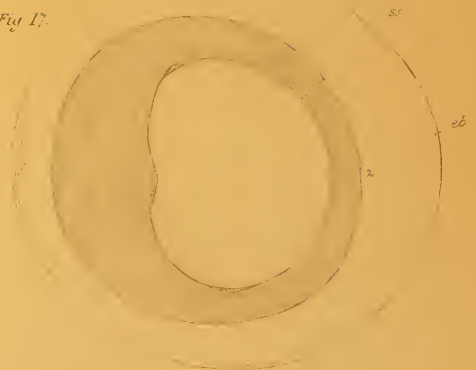


Fig. 14.

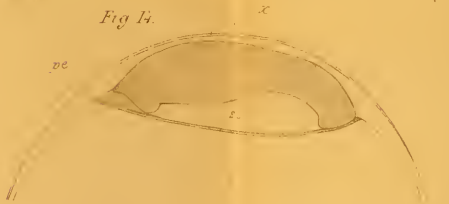


Fig. 12.



Fig. 15.

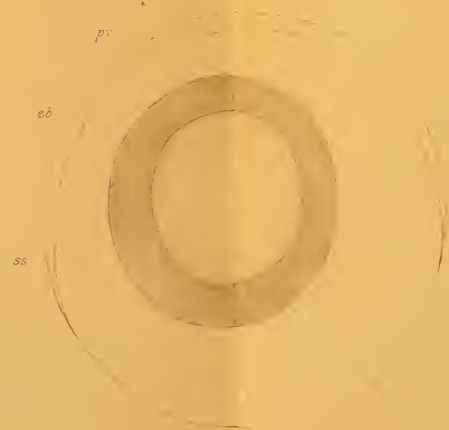


Fig. 18.

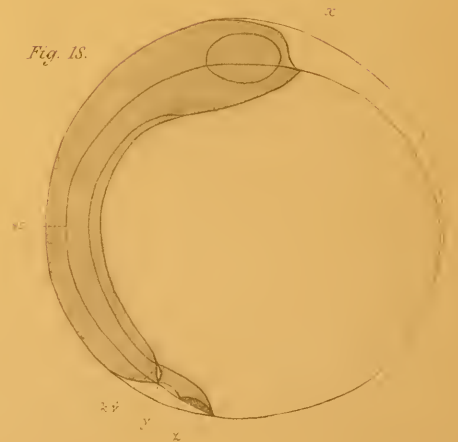


Fig. 19.

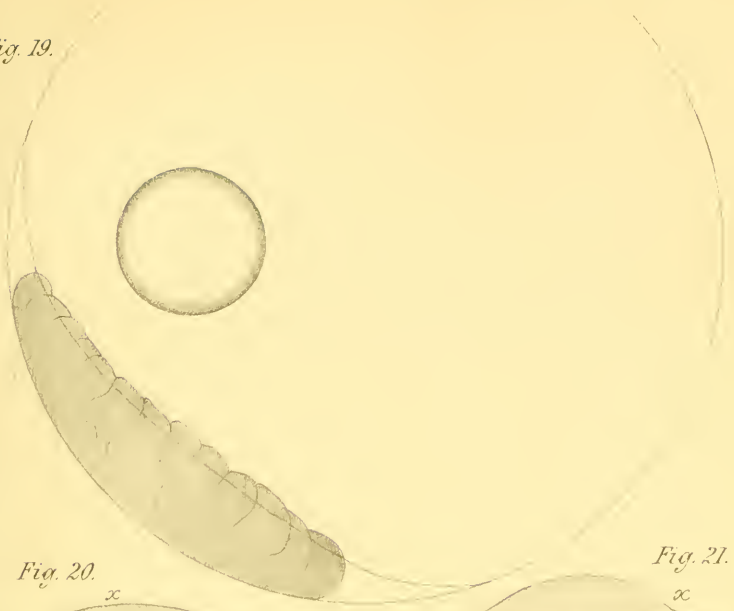


Fig. 20.

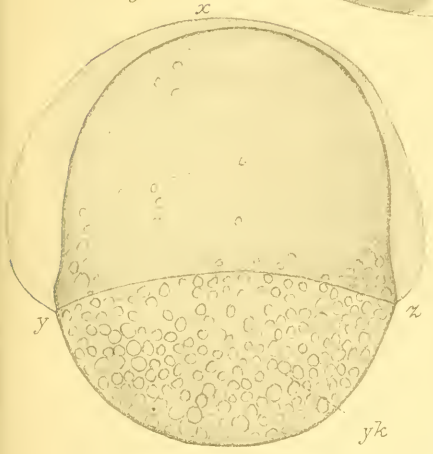


Fig. 21.



Fig. 22.

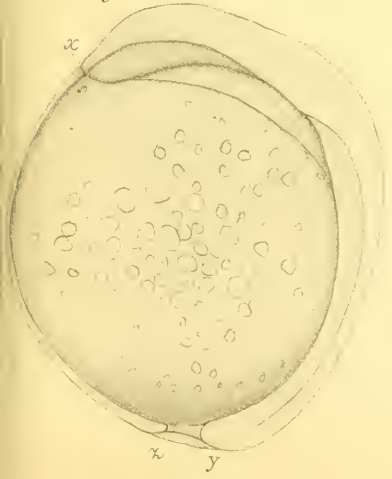
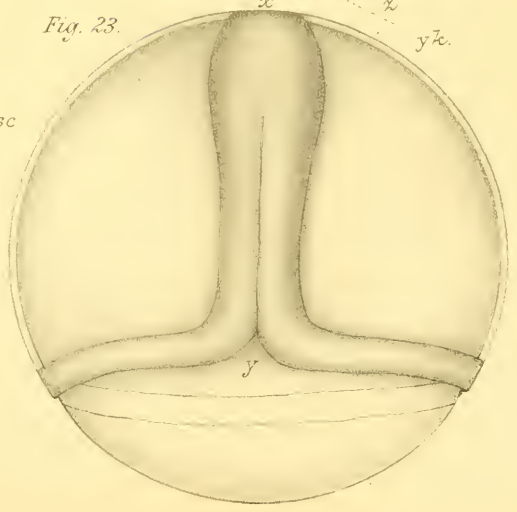


Fig. 23.



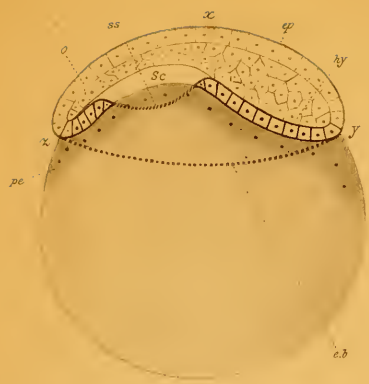


Fig. 24.

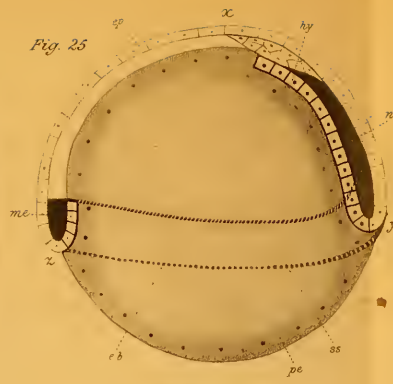


Fig. 25.

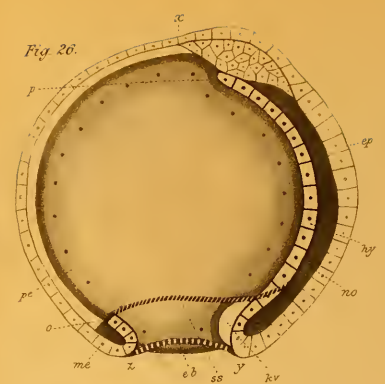


Fig. 26.

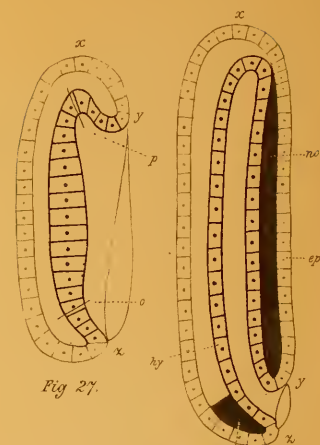
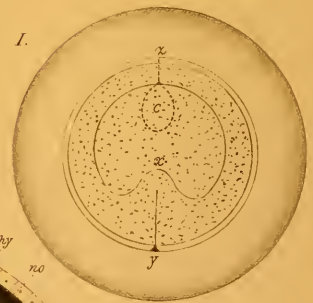
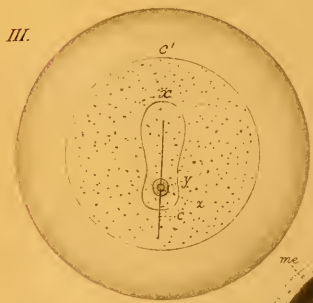


Fig. 27.

Fig. 28.



I.



III.



Fig. 29.



II.

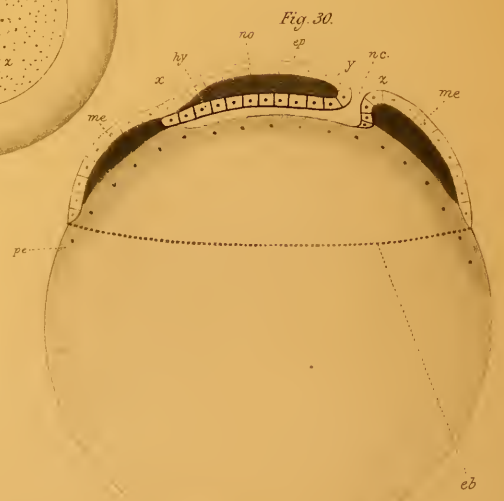


Fig. 30.

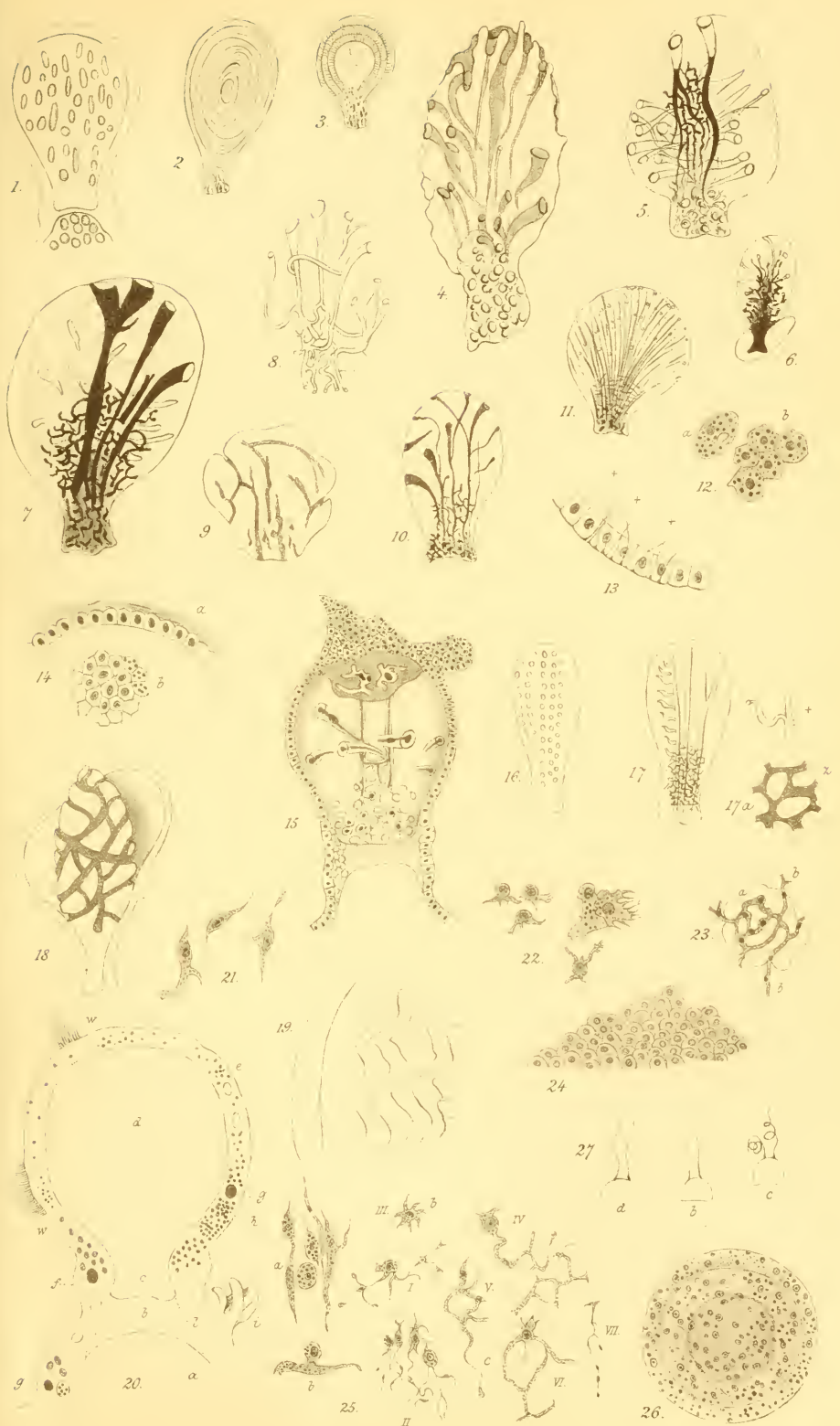


Fig. 1.



Fig. 2.



Fig. 3.

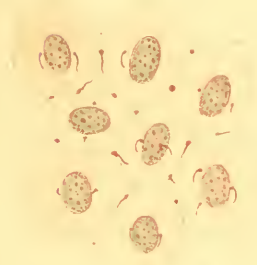


Fig. 4.

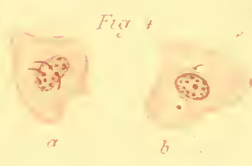


Fig. 6.

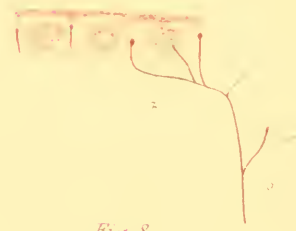


Fig. 5.

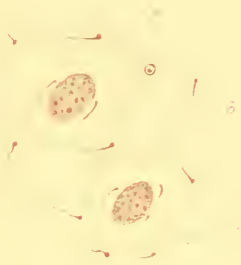
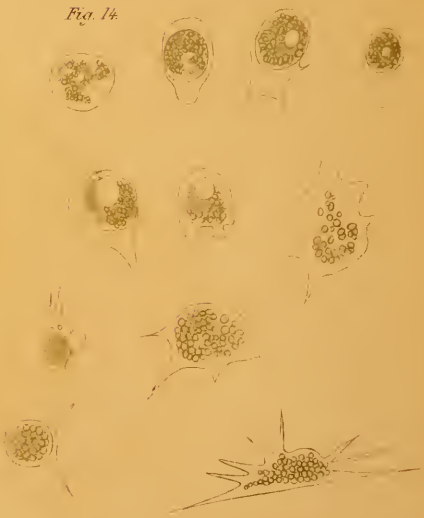
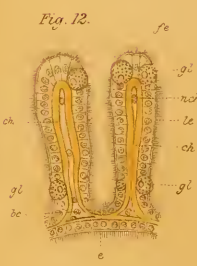
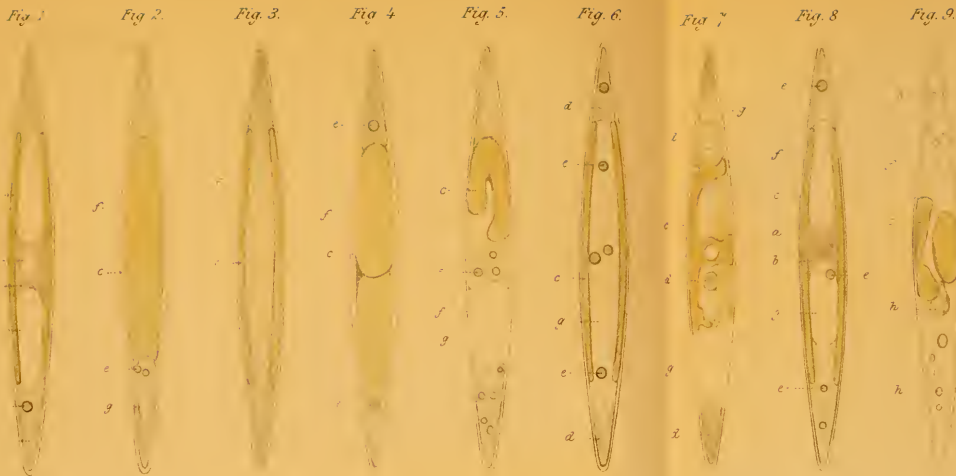


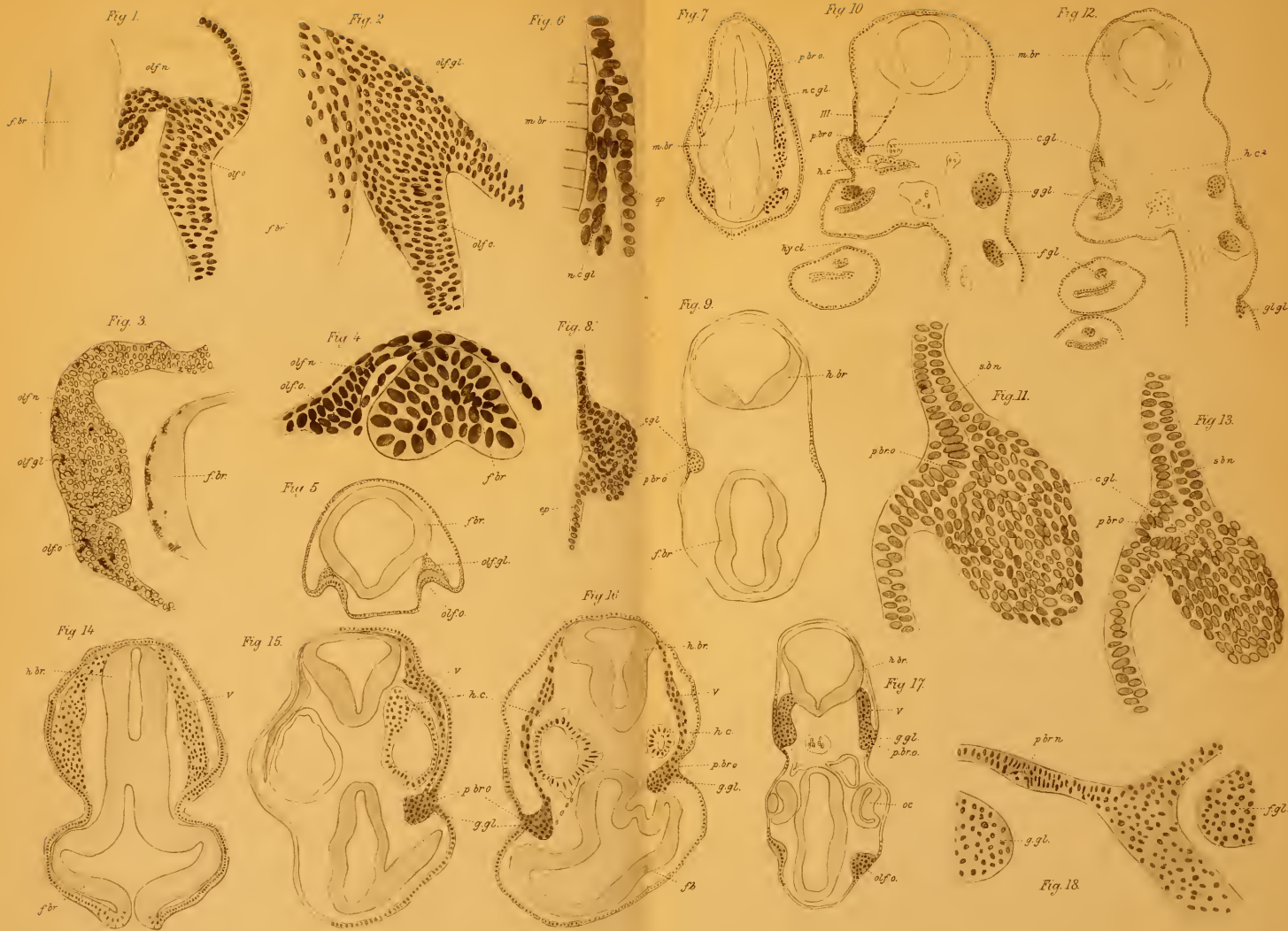
Fig. 8.

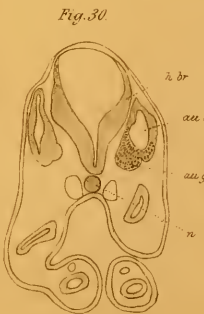
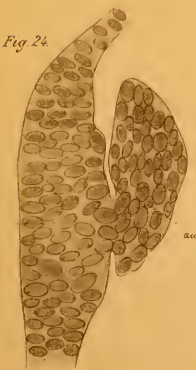
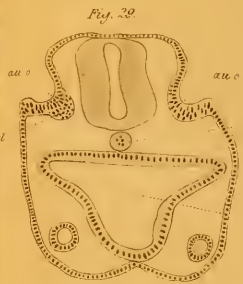
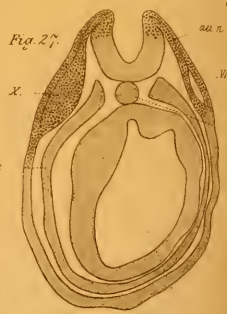
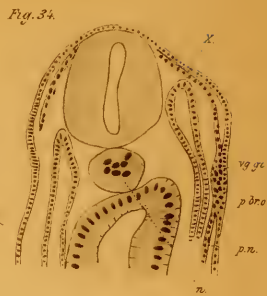
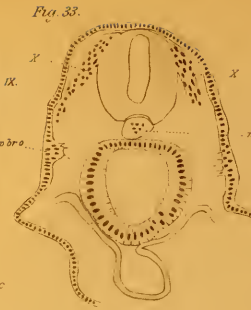
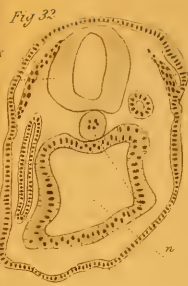
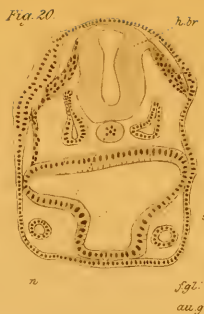
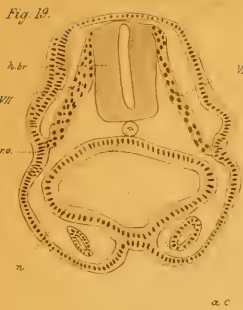


Fig. 7.









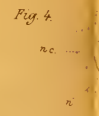
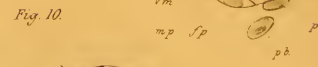
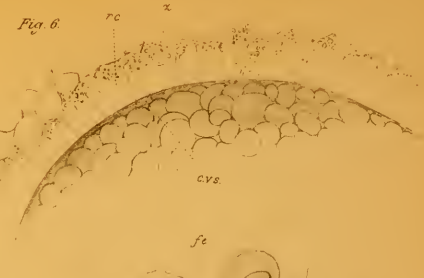
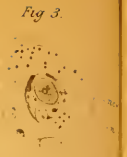
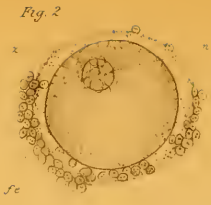
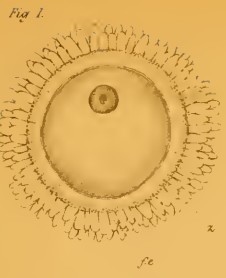
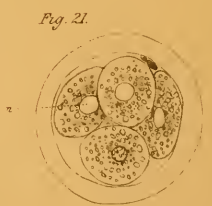
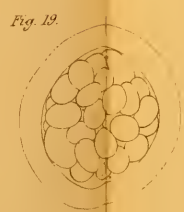
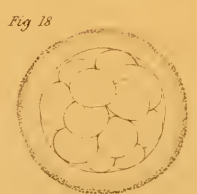
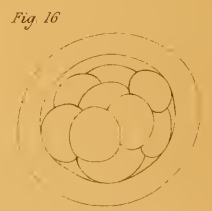
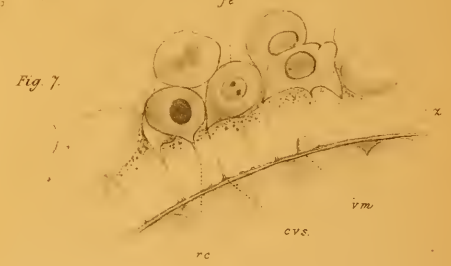
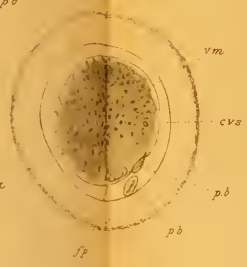


Fig. 9.



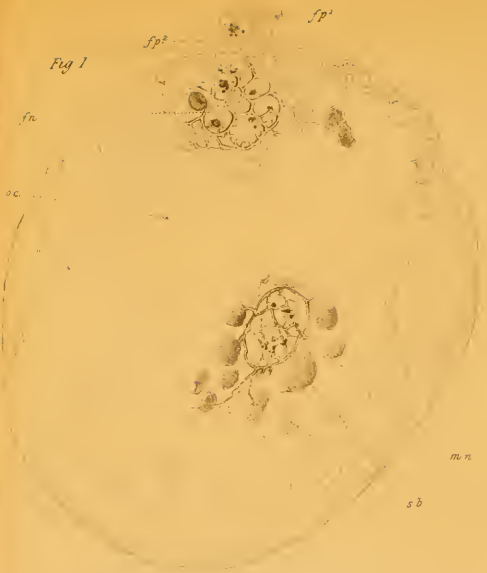


Fig. 1



Fig. 2



Fig. 3



Fig. 4



Fig. 5



Fig. 6

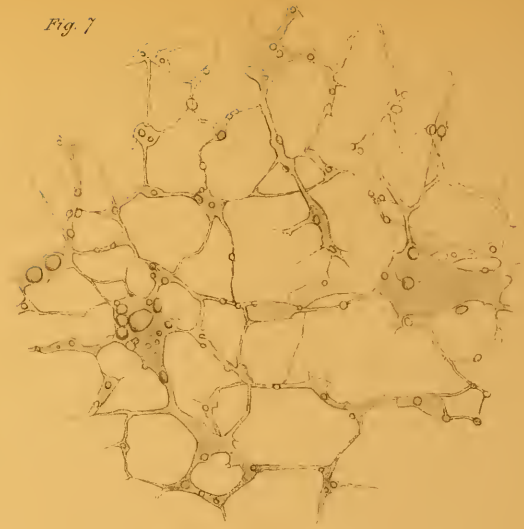


Fig. 7

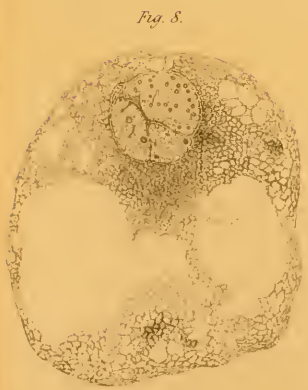


Fig. 8

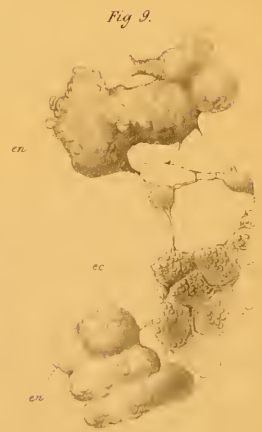


Fig. 9



Fig. 10



Fig. 3a

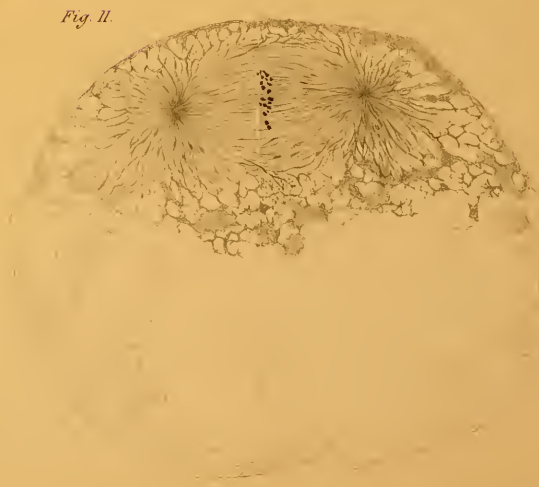


Fig. 11

Fig. 12

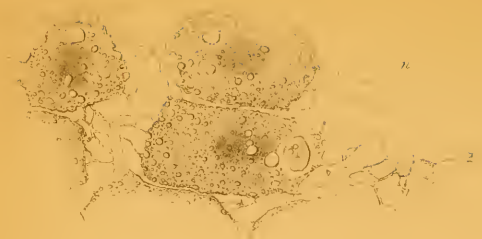


Fig. 13



Fig. 14

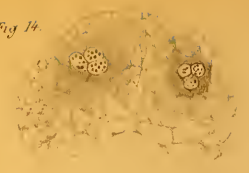


Fig. 15

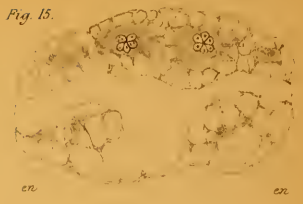


Fig. 16

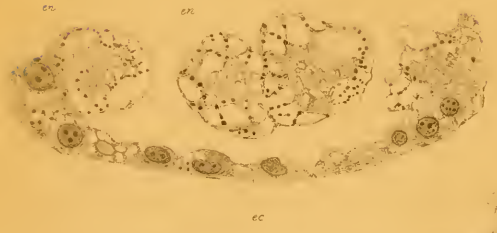


Fig. 17



Fig. 18



Fig. 20

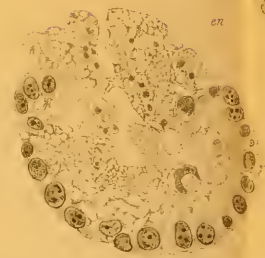


Fig. 19

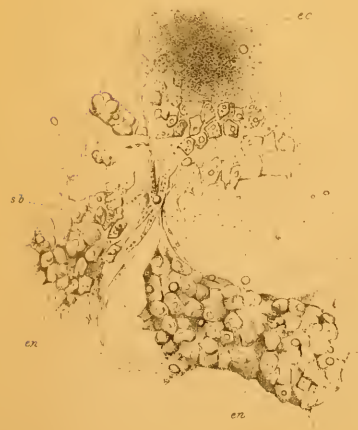


Fig. 21

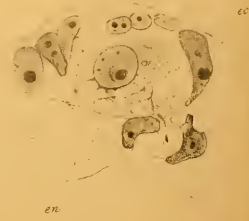


Fig. 22 a

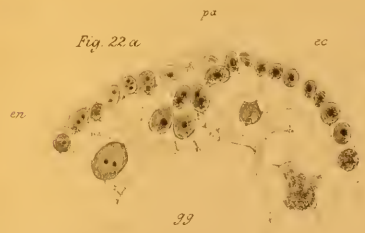


Fig. 22 b

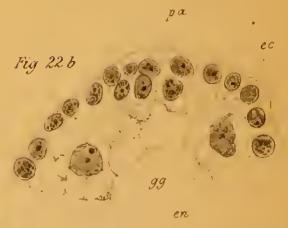


Fig. 22 c



Fig. 24 a



Fig. 24 b

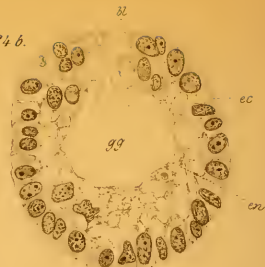


Fig. 24 c



Fig. 24 d



Fig. 25 b

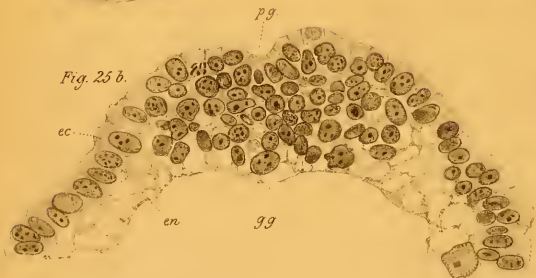


Fig. 25

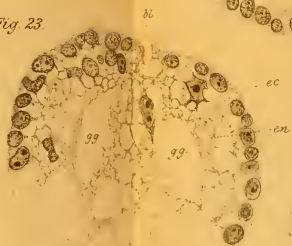


Fig. 25 a

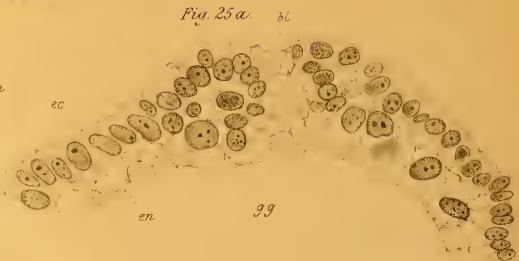


Fig. 26 a



Fig. 26 b

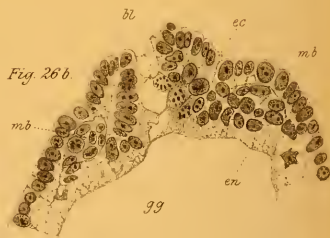


Fig. 26 c



Fig. 26 d

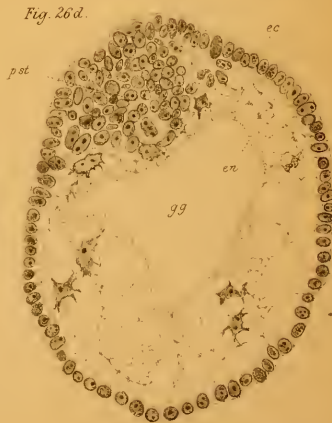




Fig. 7

Fig. 8



Fig. 9

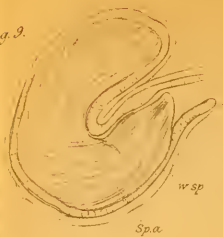


Fig. 10



Fig. 11

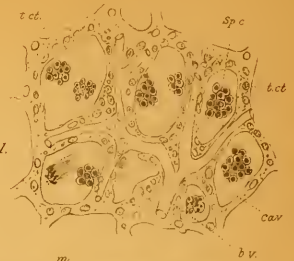


Fig. 12

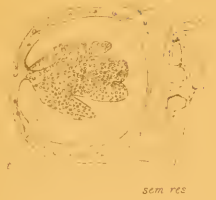


Fig. 13

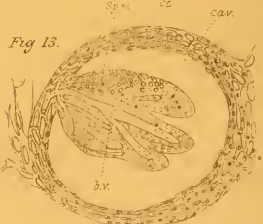


Fig. 15



Fig. 16



Fig. 18



Fig. 14



Fig. 20

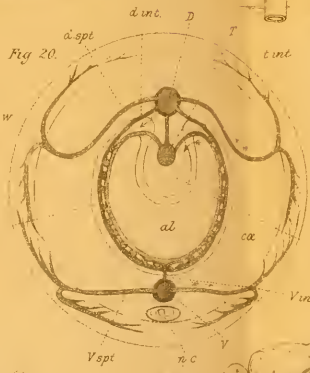


Fig. 19

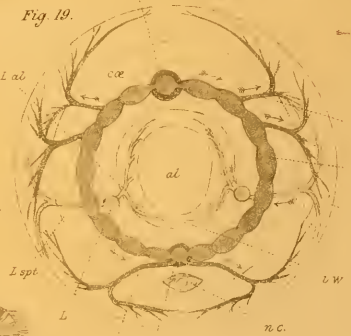


Fig. 17

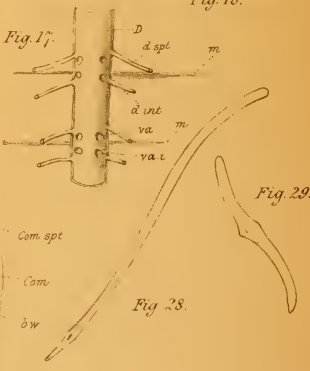


Fig. 29

Fig. 28

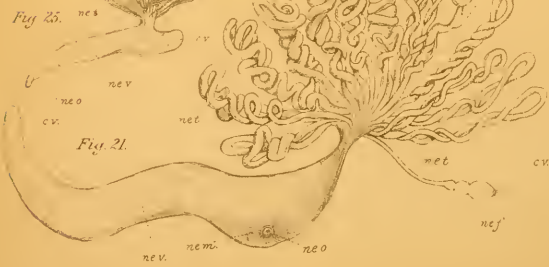
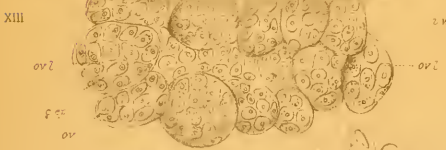


Fig. 27

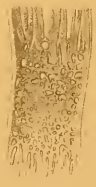


Fig. 26



Fig. 24



Fig. 23



Fig. 31.

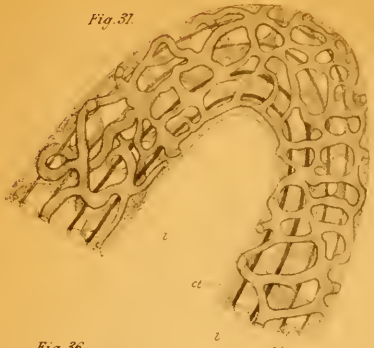


Fig. 32.



Fig. 33.

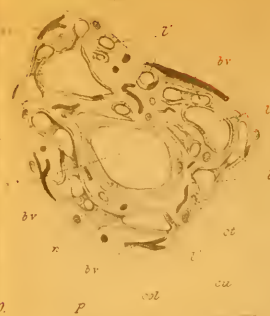


Fig. 39.

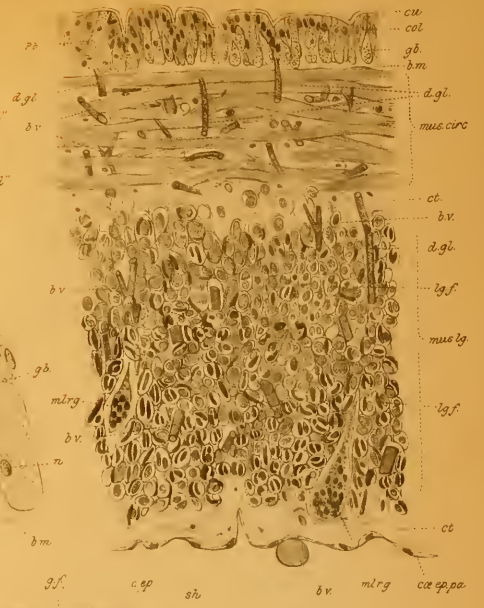


Fig. 36.

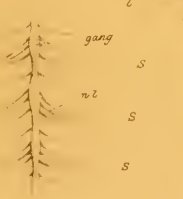


Fig. 42.

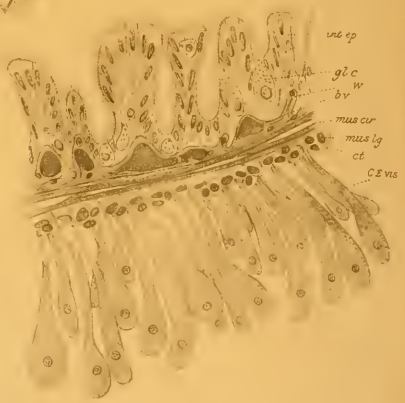


Fig. 40.

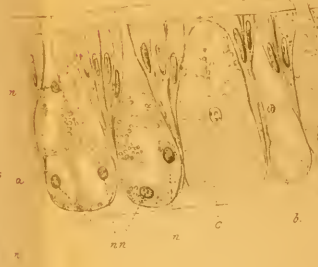


Fig. 41.

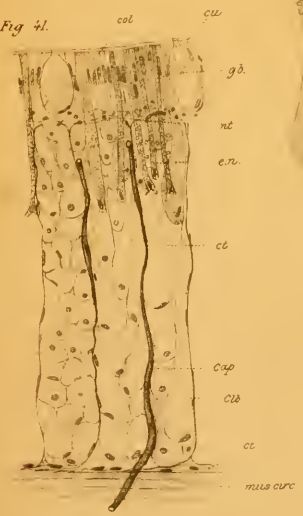


Fig. 38.

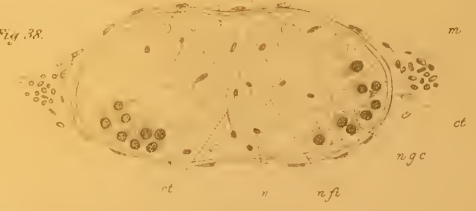


Fig. 37.

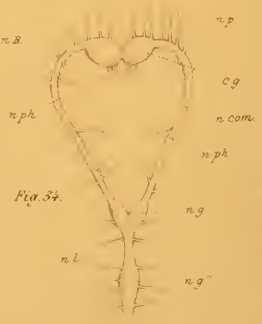
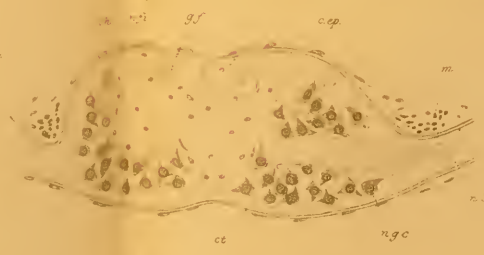
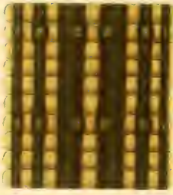


Fig. 34.

Fig. 35.



11.



12.

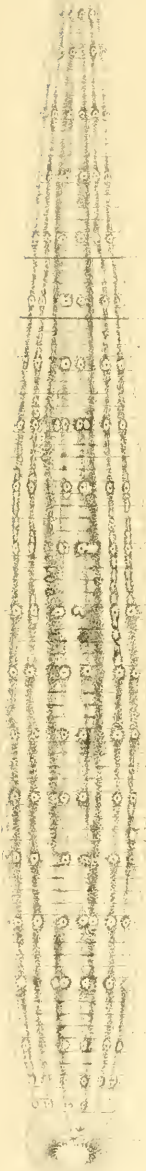


13.



10.

5.6
7.8



30.51

35.36

95

102

14.



17.



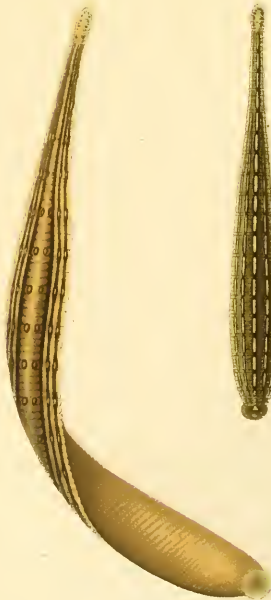
15.



16.



18.



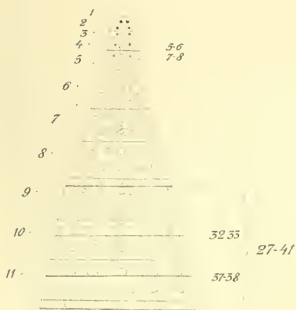
19.



20.



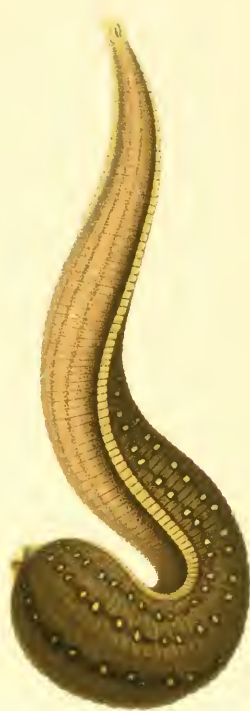
21.



22.



23.



24.
23.
20.

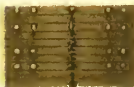
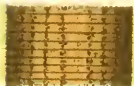
100



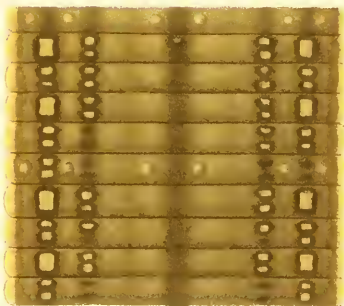
24.



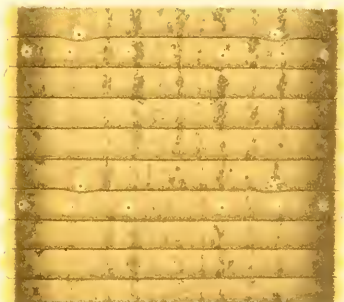
25.



26.



27.



28.



29.



30.



31.



34.



32.



33.



35.



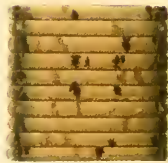
36.



37.



38.



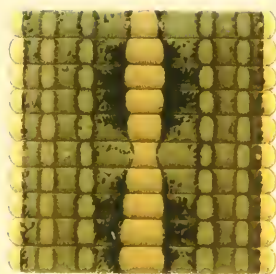
39.



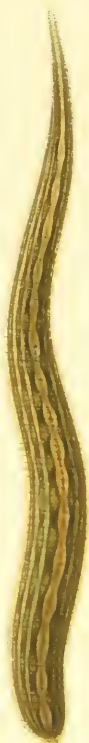
40.



41.



44.



45.

45.



42.



46.



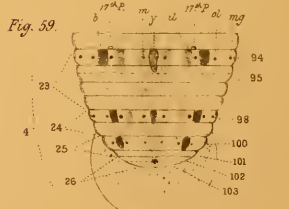
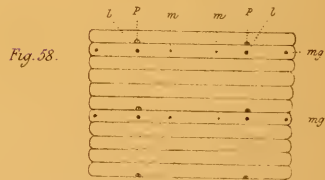
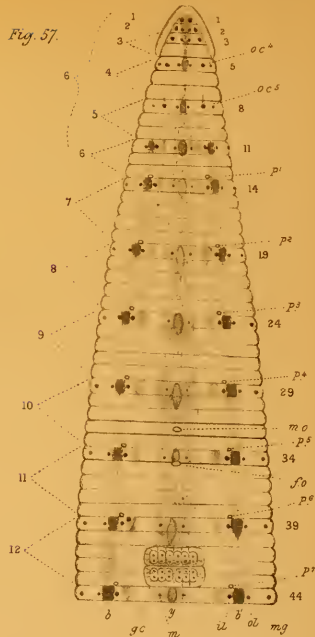
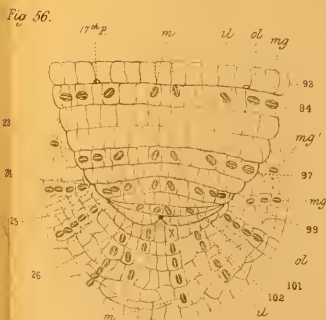
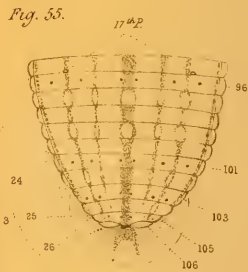
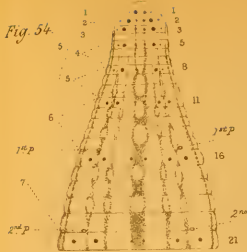
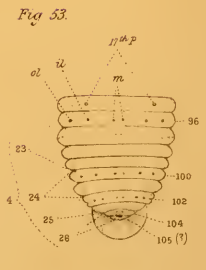
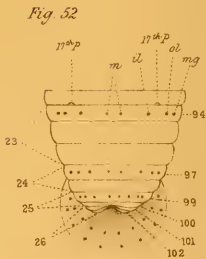
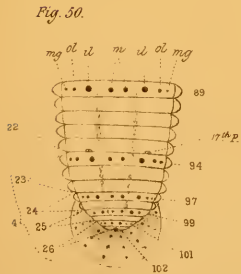
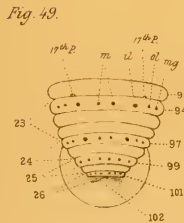
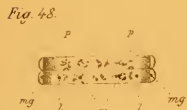
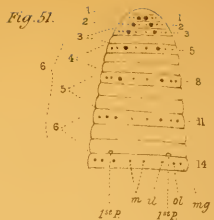
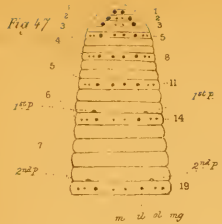


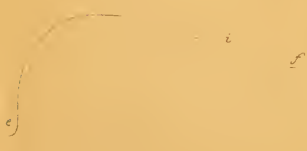
Fig. 60.



Fig. 61.



Fig. 63.



Whitman del.

Fig. 62.



Fig. 64.

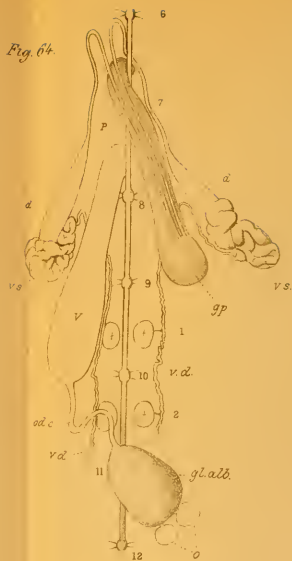


Fig. 65.



Fig. 66.

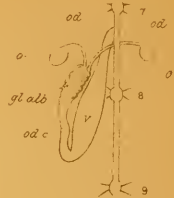


Fig. 67.

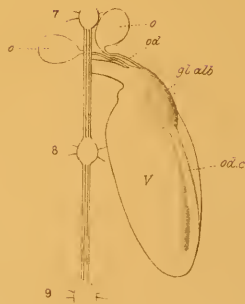


Fig. 68.

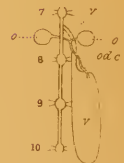


Fig. 69.



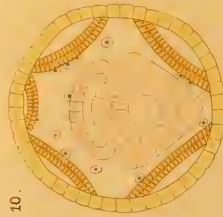
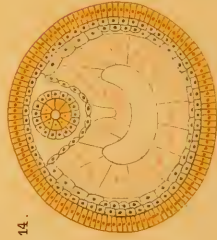
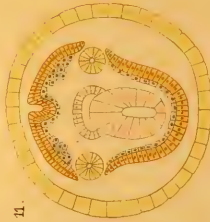
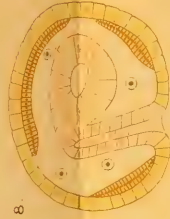
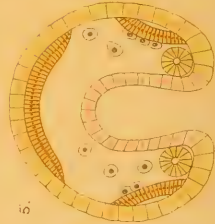
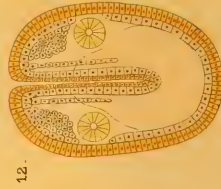
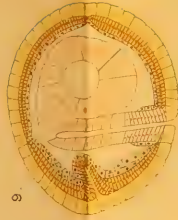
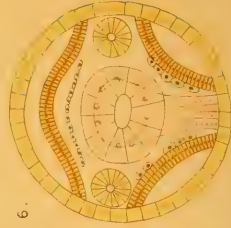
Fig. 70.



Fig. 71.



F. Bath Lith' Edin'



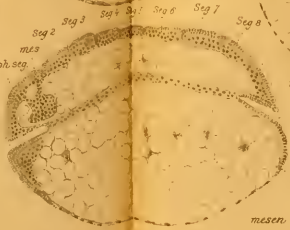
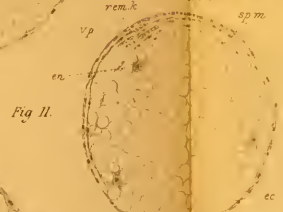
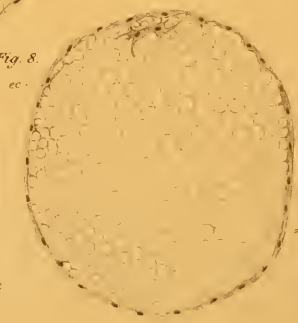
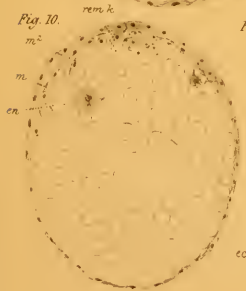
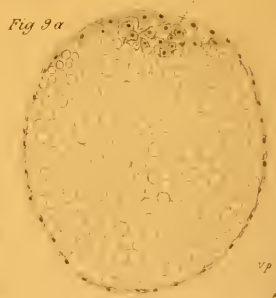
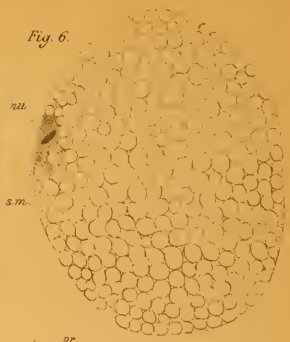
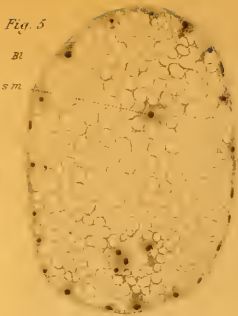
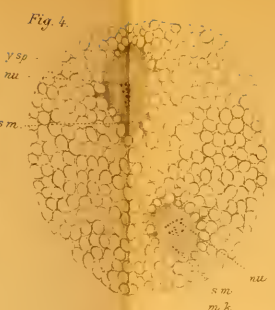
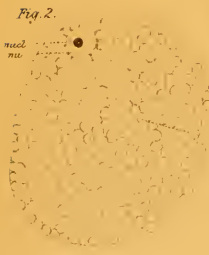
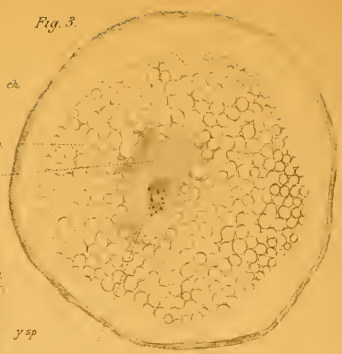
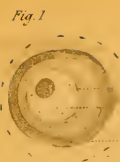




Fig. 2.

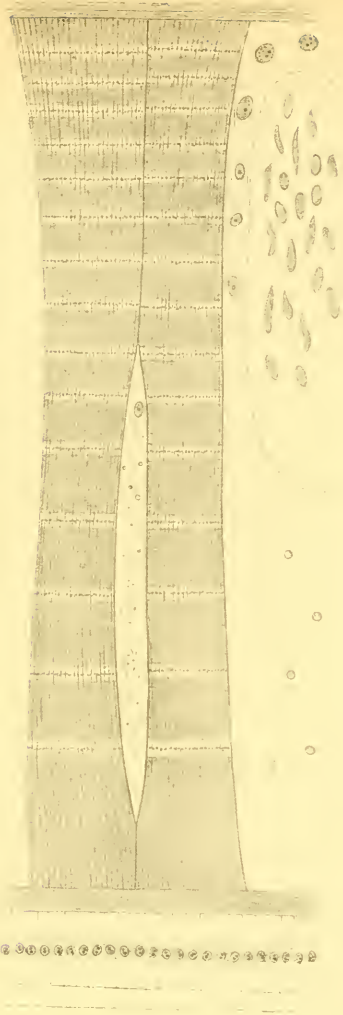


Fig. 3.

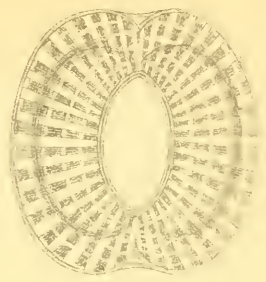


Fig. 1.



Fig. 4.



Fig. 5.

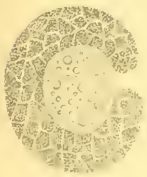


Fig. 6.



Fig. 8.

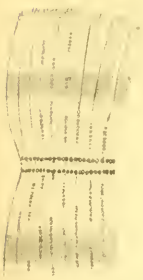


Fig. 12.



Fig. 9.



Fig. 7.

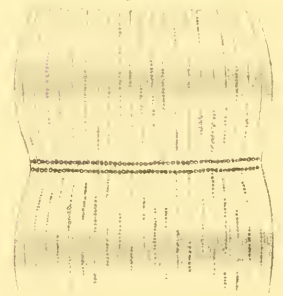


Fig. 13.



Fig. 10.



Fig. 11.



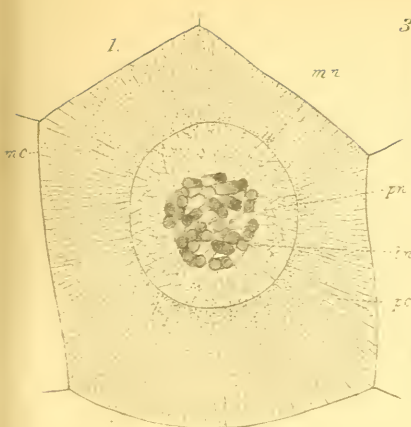


Fig. 1.

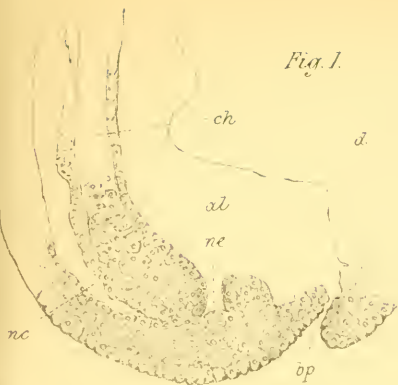


Fig. 3.



Fig. 2.



Fig. 4.



Fig. 5.



Fig. 6.

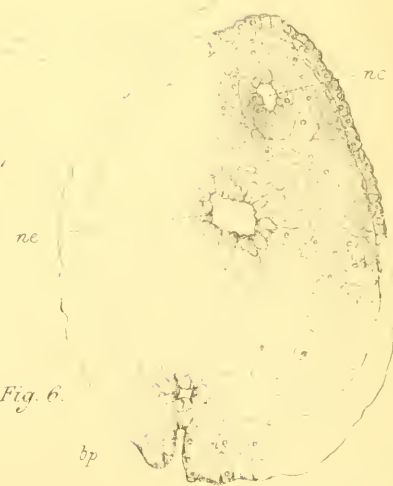


Fig. 64



Fig. 65

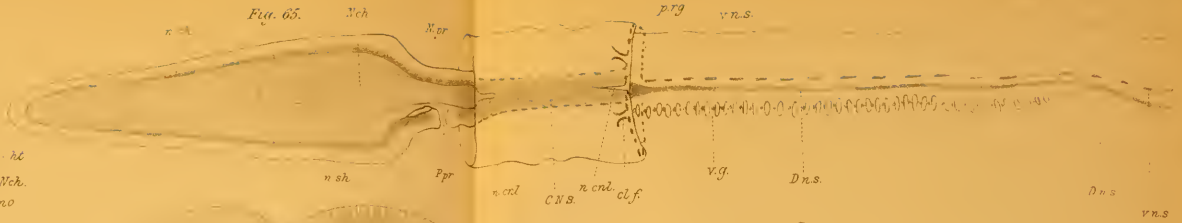


Fig. 67

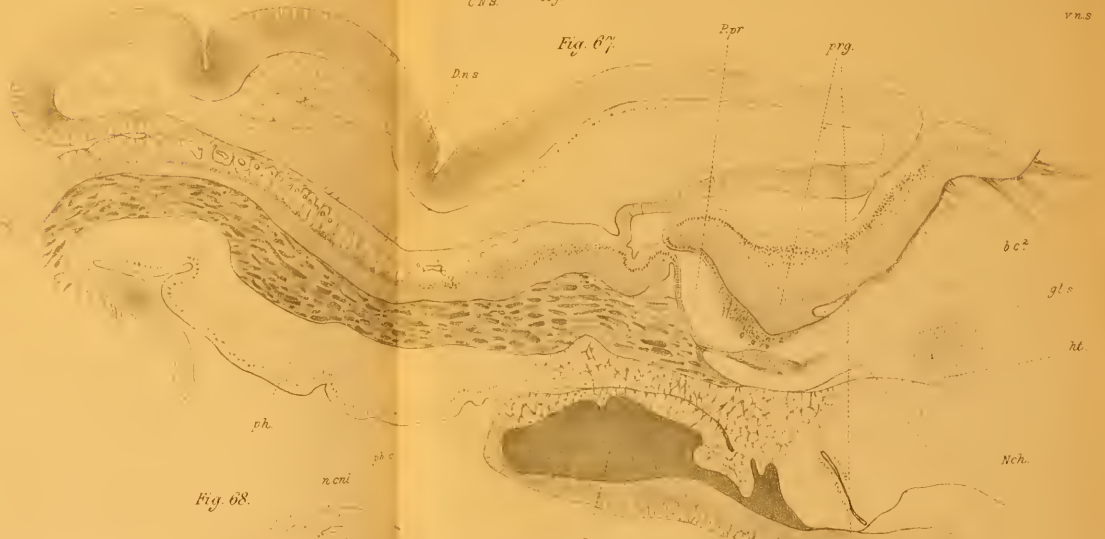


Fig. 68

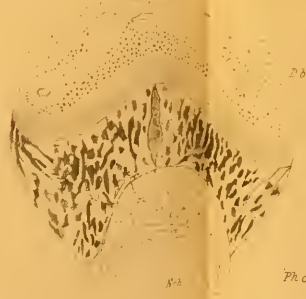


Fig. 69



Fig. 66



Fig. 70.

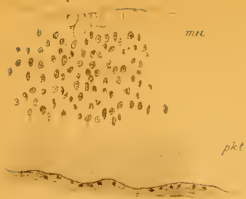


Fig. 71.

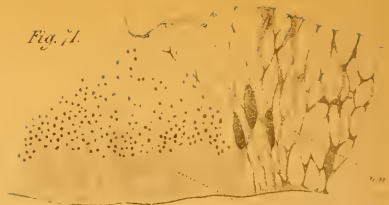


Fig. 72.



Fig. 73.



Fig. 72a.



Fig. 78.



Fig. 77.

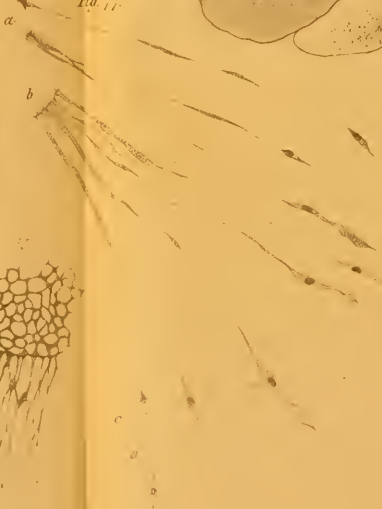


Fig. 74.

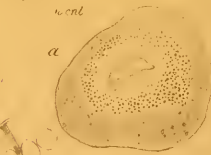


Fig. 76.

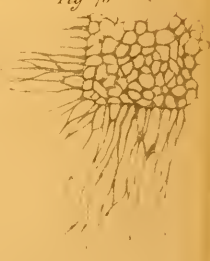


Fig. 79.

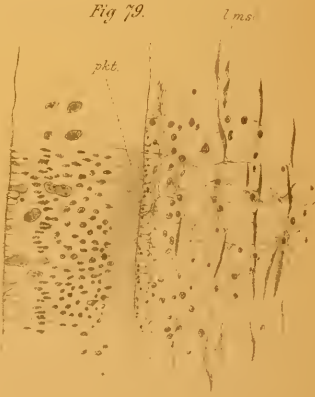


Fig. 75.



Fig. 82



Fig. 83



Fig. 85

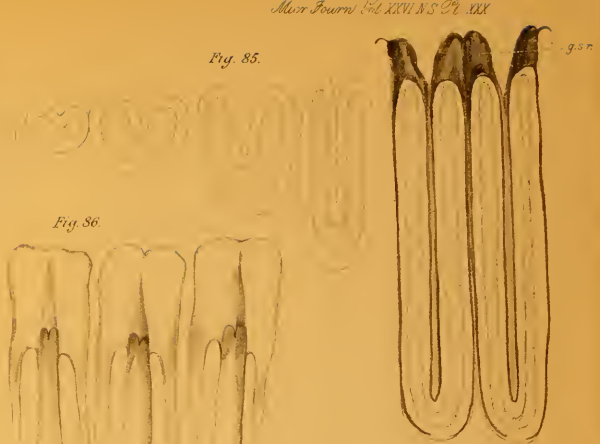


Fig. 86



Fig. 87

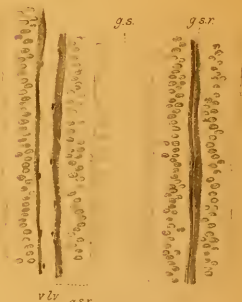


Fig. 84



Fig. 90

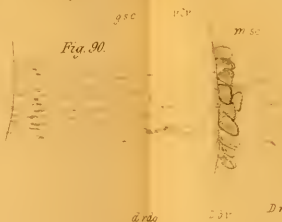


Fig. 91

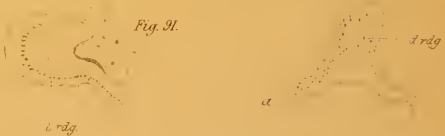


Fig. 92



Fig. 89

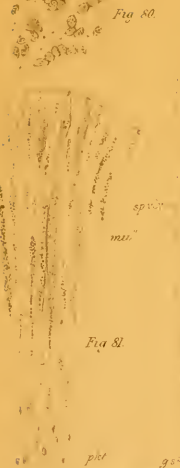
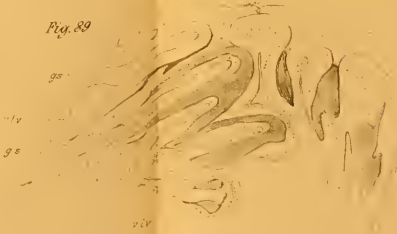


Fig. 81



Fig. 93



Fig. 100



Fig. 99



Fig. 98 a

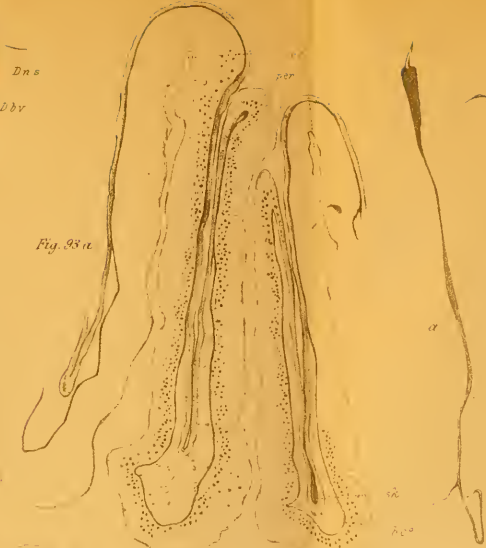


Fig. 101

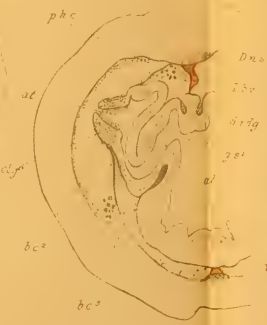


Fig. 94



Fig. 95



Fig. 96



Fig. 98



Fig. 97

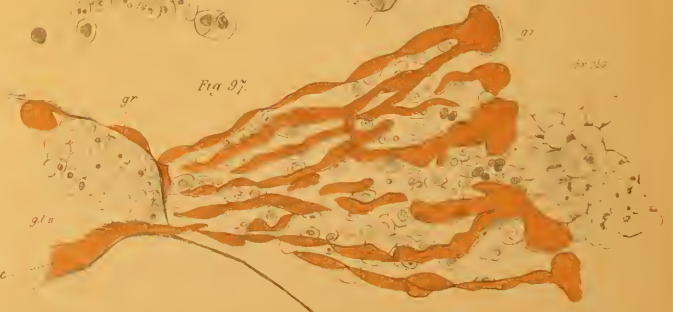


Fig. 102.



Fig. 103.

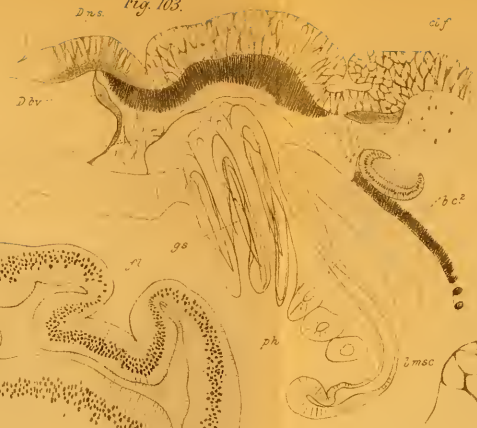


Fig. 104.



Fig. 105.



Fig. 109.



Fig. 108.

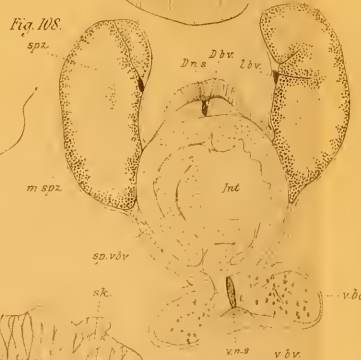


Fig. 110.



Fig. 107.

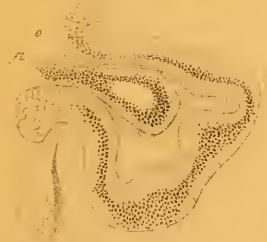


Fig. 106.



Fig. 111.

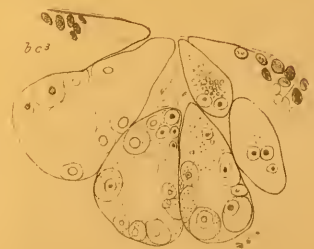


Fig. 112.



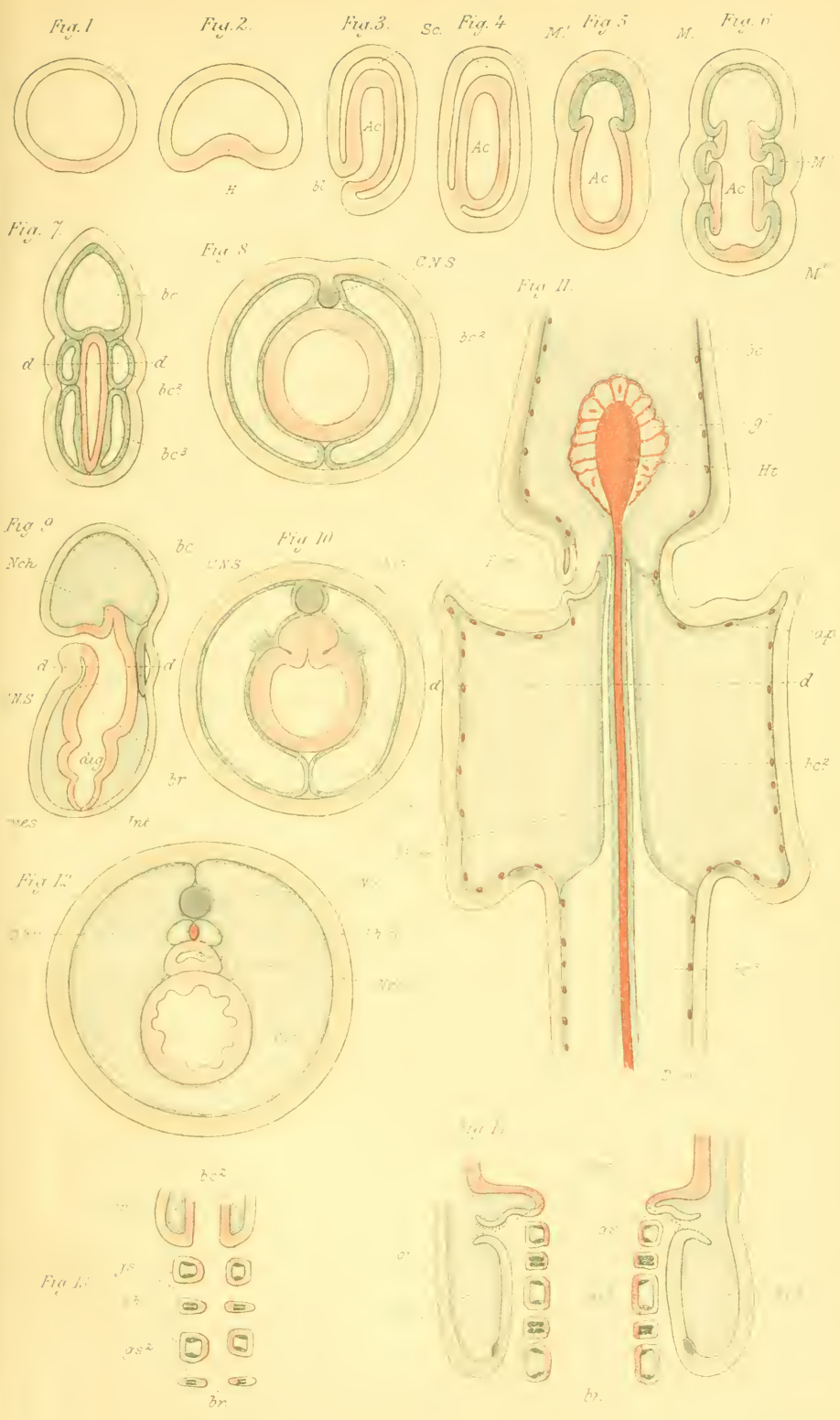




Fig. 1

E. And. n.

VII

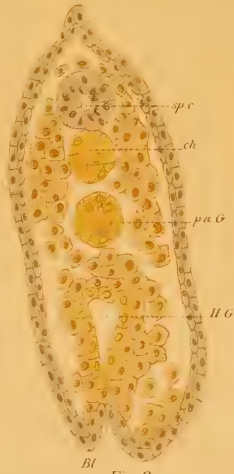


Fig. 2.

Bl

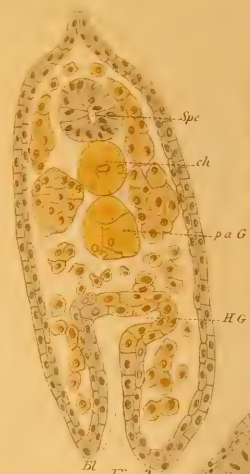


Fig. 3.

Bl



Fig. 4.

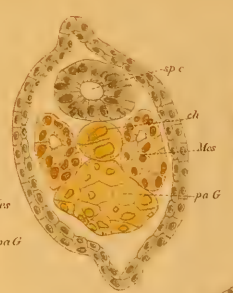


Fig. 5.

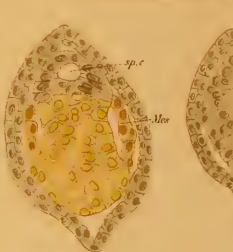


Fig. 6.

Fig. 7.



Fig. 8.

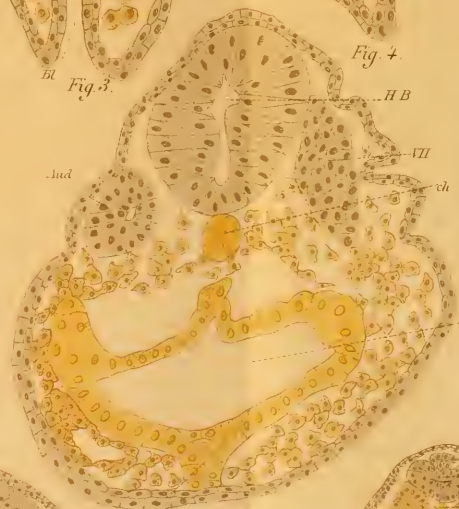


Fig. 10.



Fig. 11.

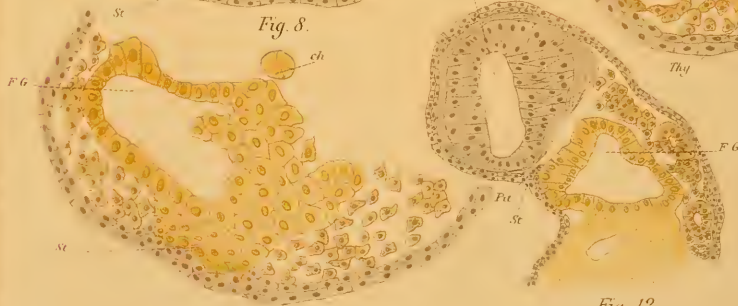


Fig. 9.

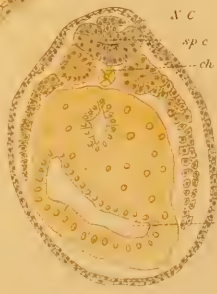


Fig. 13.

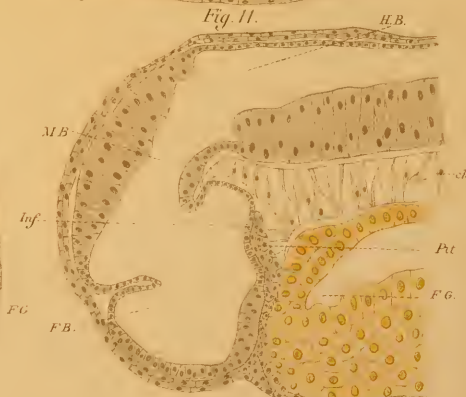


Fig. 14.



Fig. 15.

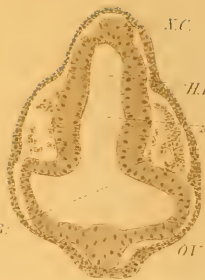


Fig. 16.

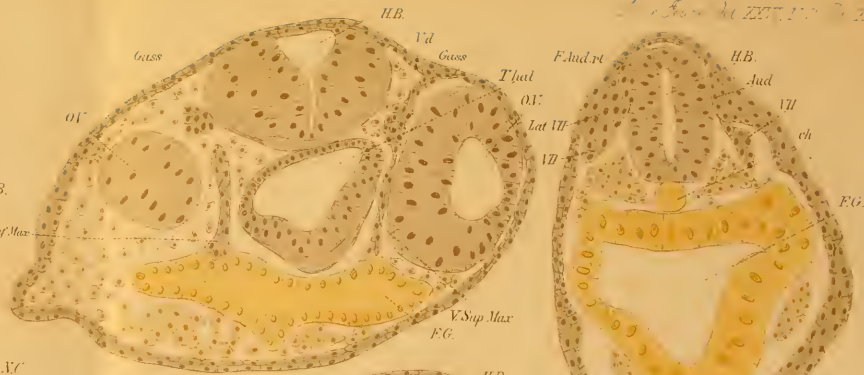


Fig. 24.



Fig. 25.

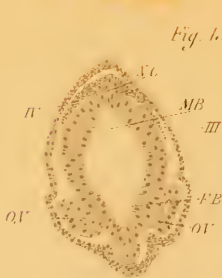


Fig. 17.



Fig. 18.

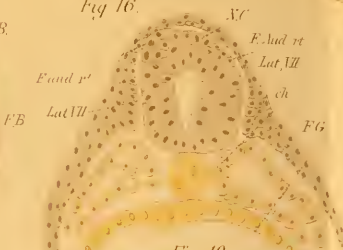


Fig. 19.

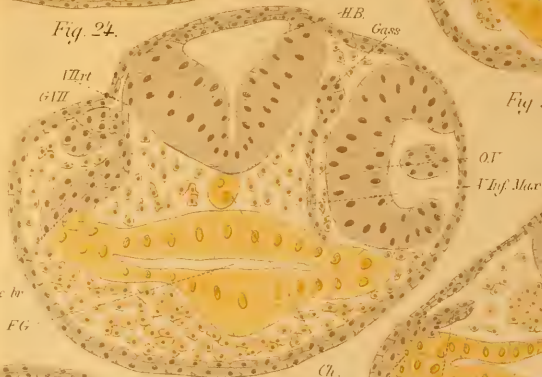


Fig. 26.

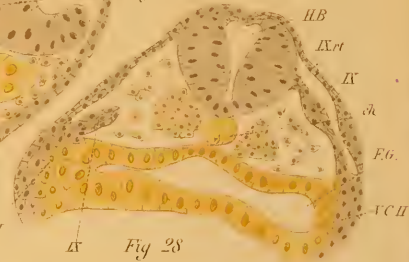


Fig. 28.



Fig. 20.

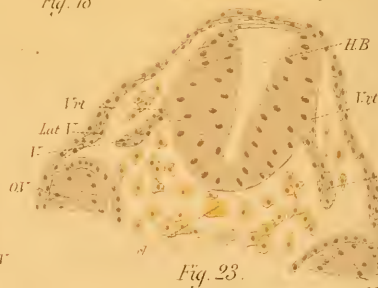


Fig. 23.

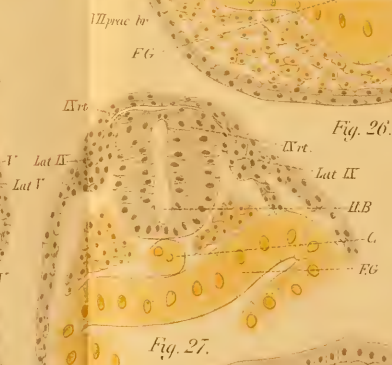


Fig. 27.

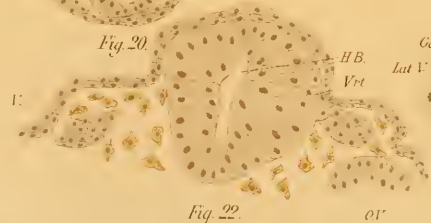


Fig. 22.



Fig. 21.

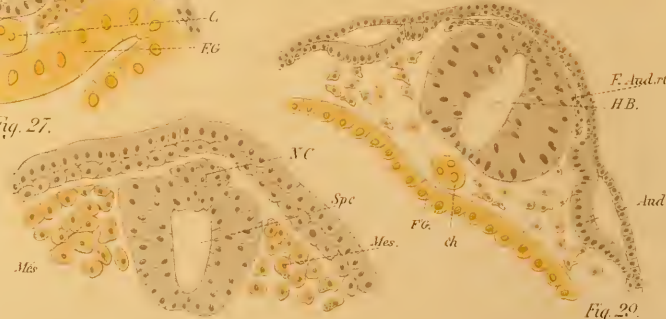


Fig. 30.

Fig. 29.

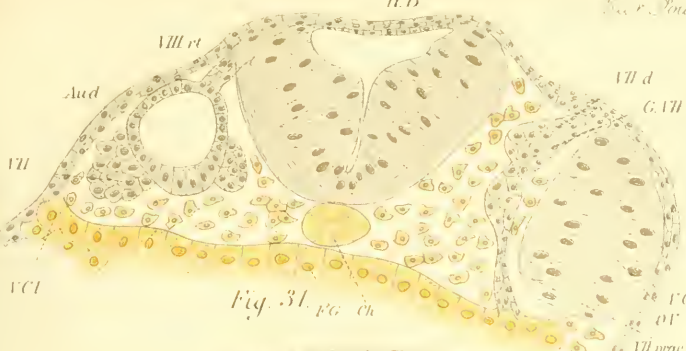


Fig. 31. FG Ch

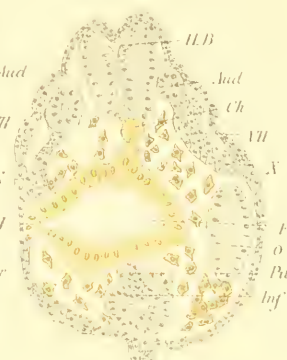


Fig. 36.

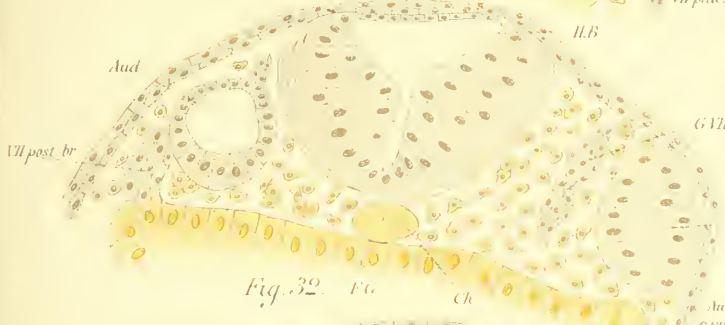


Fig. 32. FG Ch



Fig. 37.

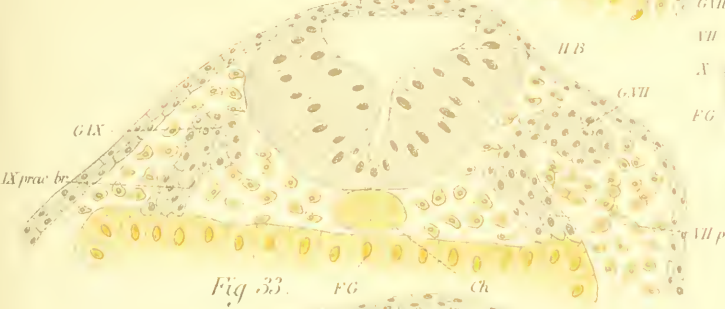


Fig. 33. FG Ch

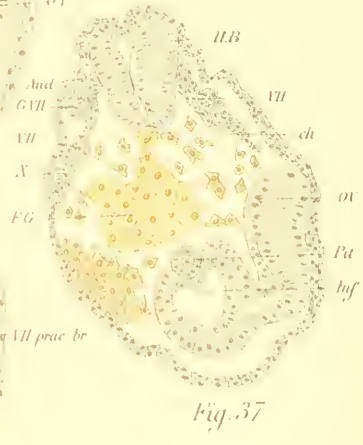


Fig. 38.

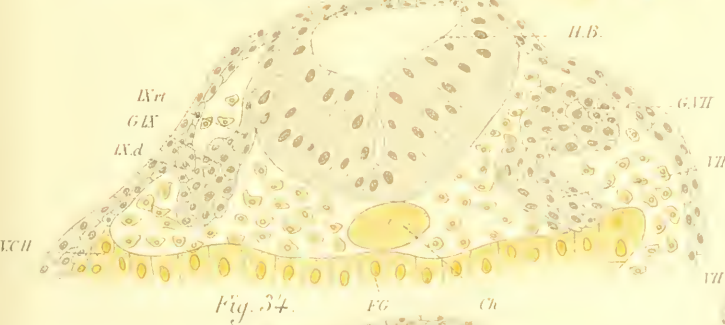


Fig. 34. FG Ch



Fig. 35. FG Ch



ERNST MAYR LIBRARY



3 2044 110 319 696

