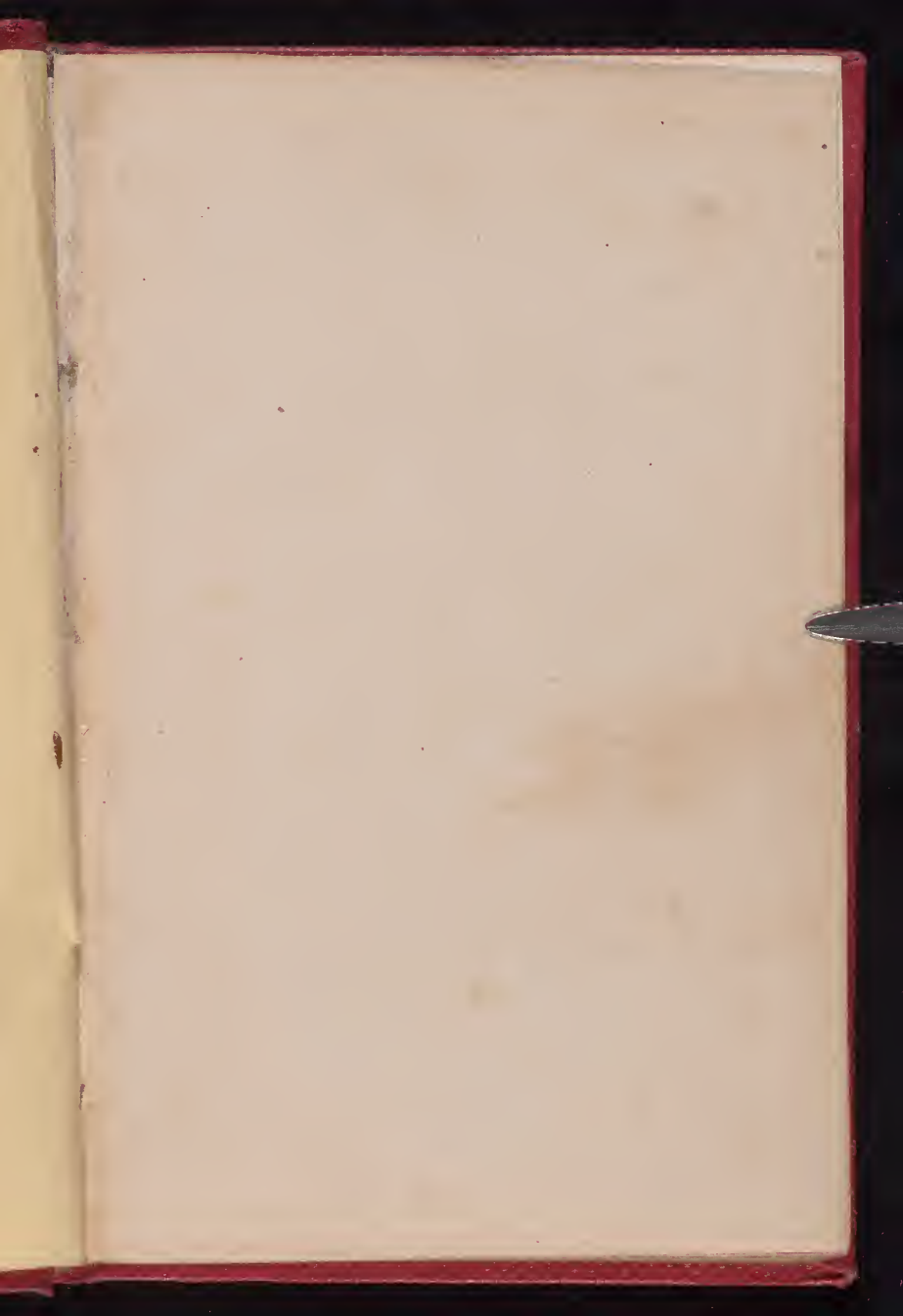




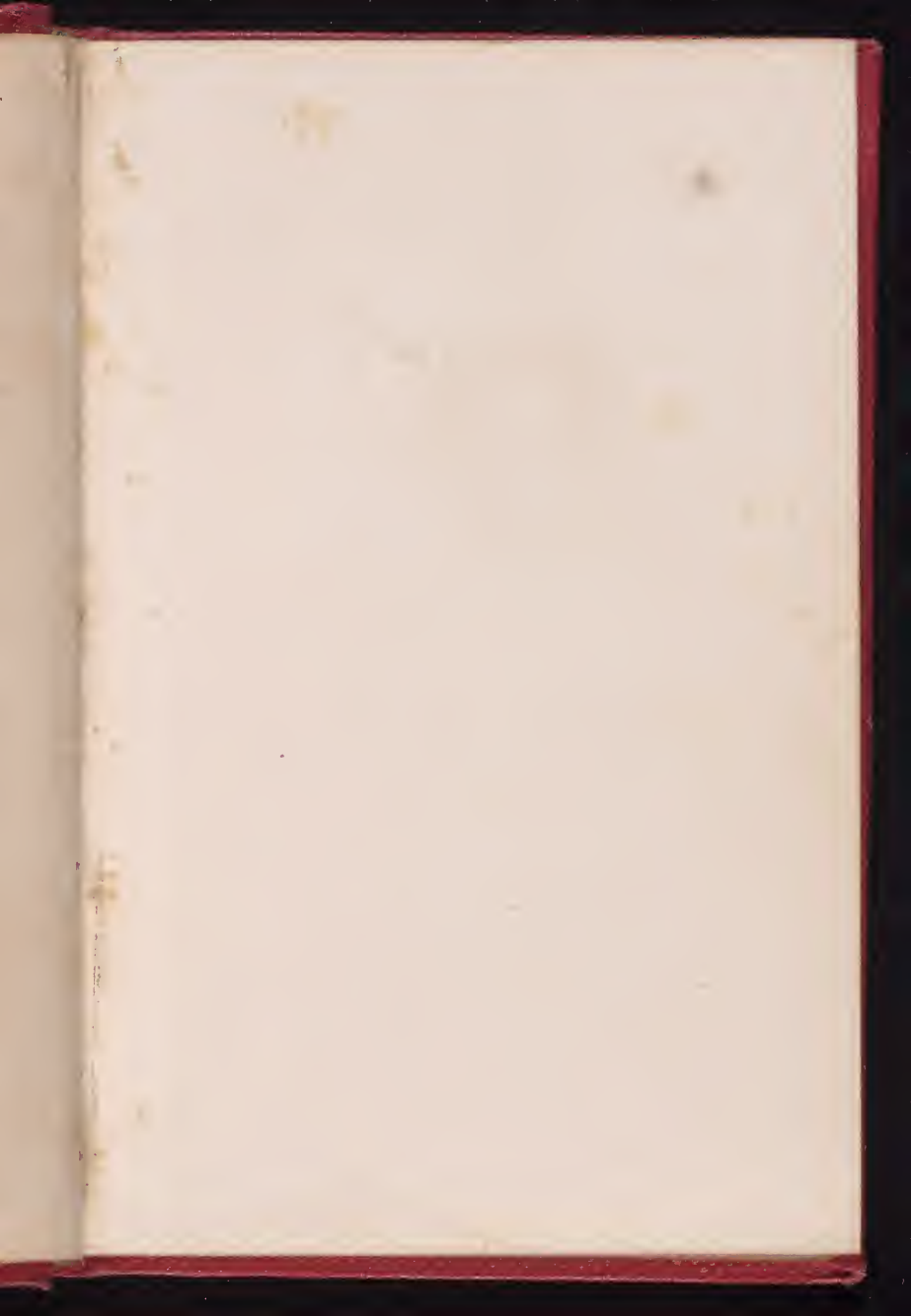
Will Cousin Mimmie
please accept this,
with much love,
from -

Fannie A. Swift.

Chicago Botanic Garden
Library









My Early Days.

UNIVERSITY OF MICHIGAN

THE LIBRARY

1000 S. ZEEB ROAD
ANN ARBOR, MICHIGAN 48106-1000

TEL: (313) 763-1000
FAX: (313) 763-1001

WWW.LIBRARY.MICHIGAN.EDU

UNIVERSITY OF MICHIGAN

1000 S. ZEEB ROAD
ANN ARBOR, MICHIGAN 48106-1000
TEL: (313) 763-1000
FAX: (313) 763-1001
WWW.LIBRARY.MICHIGAN.EDU

UNIVERSITY OF MICHIGAN

1000 S. ZEEB ROAD



Miss Mary [unclear]

LEXICON
OF
LADIES' NAMES:

WITH THEIR

Floral Emblems;

CONTAINING

ONE HUNDRED AND SIXTY-TWO NAMES, WITH
THEIR SIGNIFICATIONS.

ALSO, ONE HUNDEED AND FORTY-ONE FLOWERS, WITH
THEIR SYMBOLIC LANGUAGE.

A GIFT BOOK FOR ALL SEASONS.

BY

MRS. SARAH C. CARTER.

A MOTHER'S name,—what thoughts arise
When'er we hear that sound!
A Sister's name,—ah, that we prize
Wherever it is found.
A daughter's name,—you'll find it here,
With that of wife,—than all more dear;
These names recall some joyous hours,
And here you'll find them linked with flowers.

BOSTON:
G. W. COTRELL.
1860.

Entered according to Act of Congress in the year 1852, by
MRS. SARAH C. CARTER,
In the Clerk's Office of the District Court of the District of
New Hampshire.

STEREOTYPED BY DILLINGHAM & BRAGG,
41 Congress Street, Boston.

16-0547

P R E F A C E .

NAMES were anciently chosen for their Significations, and such Significations can now be found only in ancient books, except a few in our family Bibles.

Authorities differ somewhat in their definitions of names,—in such cases the author has adopted the one which her own taste dictated; also in the Floral Emblems, she has pursued the same course. The authorities consulted for these, were — Flora's Interpreter, Flora's Lexicon, and Newman's Illustrated Botany.

It is hoped this simple, unpretending volume of Names, Flowers, and Sentiments, will prove an acceptable Gift-Book to all who bear a Lady's Name.

s. c. c.



INDEX OF NAMES.

	PAGE
Abigail,	1
Abby,	1
Abilene,	2
Adaline,	3
Adelaide,	4
Adeliza,	5
Agnes,	6
Alberta,	7
Albertine,	7
Aleesta,	8
Alethcia,	9
Alfreda,	10
Alice,	11
Alicia,	11
Almeda,	12
Amanda,	13
Ambry,	14
Amelia,	15
Amina,	16
Amy,	16
Angela,	17
Angeline,	17
Angelica,	17
Ann,	18
Anna,	18
Annie,	18
Aphia,	19
Arabella,	20

Arethusa,	21
Asenath,	22
Aspasia,	23
Atalanta,	24
Augusta,	25
Barbara,	26
Bathsheba,	27
Beatrice,	28
Bertha,	29
Bessy,	30
Betsy,	30
Bethia,	31
Beulah,	32
Birsha,	33
Blanch,	34
Candace,	35
Caroline,	36
Cassandra,	37
Catharine,	38
Charlotte,	39
Chloe,	40
Christina,	41
Ciseline,	42
Clara,	43
Clarissa,	43
Clementine,	44
Constance,	45
Cornelia,	46
Cynthia,	47
Daphne,	48
Deborah,	49
Delia,	50
Demaris,	51
Dianna,	52
Diantha,	52
Dora,	53
Dorothy,	54

INDEX OF NAMES.

vii

Edith,	55
Edwinna,	56
Eleanor,	57
Electa	58
Eliza,	59
Elizabeth,	59
Ella,	60
Ellen,	61
Elmira,	62
Emeline,	63
Emily,	63
Emma,	64
Estella,	65
Esther,	66
Ethel,	67
Eunice,	68
Eva,	69
Evalyn,	69
Fanny,	70
Frances,	70
Fidelia,	72
Flora,	73
Florence,	74
Georgette,	75
Geraldine,	76
Gertrude,	77
Grace,	78
Hannah,	79
Harriett,	81
Helen,	82
Henrietta,	83
Hepsibah,	84
Huldah,	85
Ianthe,	86
Irene,	87
Jane,	88
Joan,	88

Jenny,	89
Jemima,	90
Josephine,	91
Julia,	92
Keziah,	93
Laura,	94
Louisa,	95
Louise,	95
Lucille,	96
Lucy,	96
Lydia,	97
Mabel,	98
Mahala,	99
Marcia,	100
Margaret,	101
Maria,	102
Martha,	103
Mary,	104
Matilda,	105
Melissa,	106
Mildred,	107
Minerva,	108
Minna,	109
Minnie,	109
Miranda,	110
Miriam,	111
Myra,	112
Naomi,	113
Nancy,	114
Octavia,	115
Olivia,	116
Paulina,	118
Permelia,	119
Persis,	120
Phebe,	121
Prudence,	122
Rachel,	123

Rebecca,	124
Rhoda,	125
Rosanna,	126
Rasamond,	127
Rosella,	128
Rowenna,	130
Rheuhama,	131
Ruth,	132
Saloma,	133
Sapphira,	134
Sarah,	135
Sibyl,	136
Sophia,	137
Stella,	138
Susan,	139
Tabitha,	140
Theodosia,	141
Thirza,	142
Tryphena,	144
Tryphosa,	145
Urania,	146
Victoria,	148
Zilpah,	149



INDEX OF FLOWERS.

	PAGE
Aloe,	22
Allyssum,	61
Agrimony,	89
Amaranth,	14
Amaryllis,	62
Anemone,	149
Apple Blossom,	104
Apple, Pine	183
Apple, Thorn	85
Barberry,	33
Bay,	68
Bonus Henricus,	18
Box,	15
Broomcorn,	49
Buck Bean,	10
Bundle of Reeds,	12
Buttercup,	74
Calycanthus,	142
Camilia Japonica,	3
Cardinal Flower,	4
Carolina Syringe,	99
Cherry Blossom,	88
Cinque Foil,	27
Citron,	103
Clemates,	44
Convoloulus, Field	110

Coreopsis,	69
Cornealian Cherry Tree,	46
Cornus,	120
Cowslip, American	65
Crocus,	56
Crowfoot,	41
Crown, Imperial	29
Chrysanthemum, White	9
Cypress,	112
Dahlia,	25
Daisy,	123
Dead Leaves,	97
Elder,	114
Evergreen Thorn,	40
Everlasting,	30
Fennel,	60
Fir Tree,	135
Flowering Reeds,	130
Flower of an Hour,	144
Forget-me-not,	119
Garland,	94
Geranium,	100
Geranium, Rose	73
Geranium, Scarlet	113
Gilliflower,	34
Glory Flower,	138
Grape,	79
Heliotrope, Peruvian	64
Hepatica,	39
Hibiscus,	86
Holly,	37
Holyhock,	19
Hornbeam,	91
Houstonia,	132
Hyacinth, Blue	45
Ipomea,	134
Iris,	41

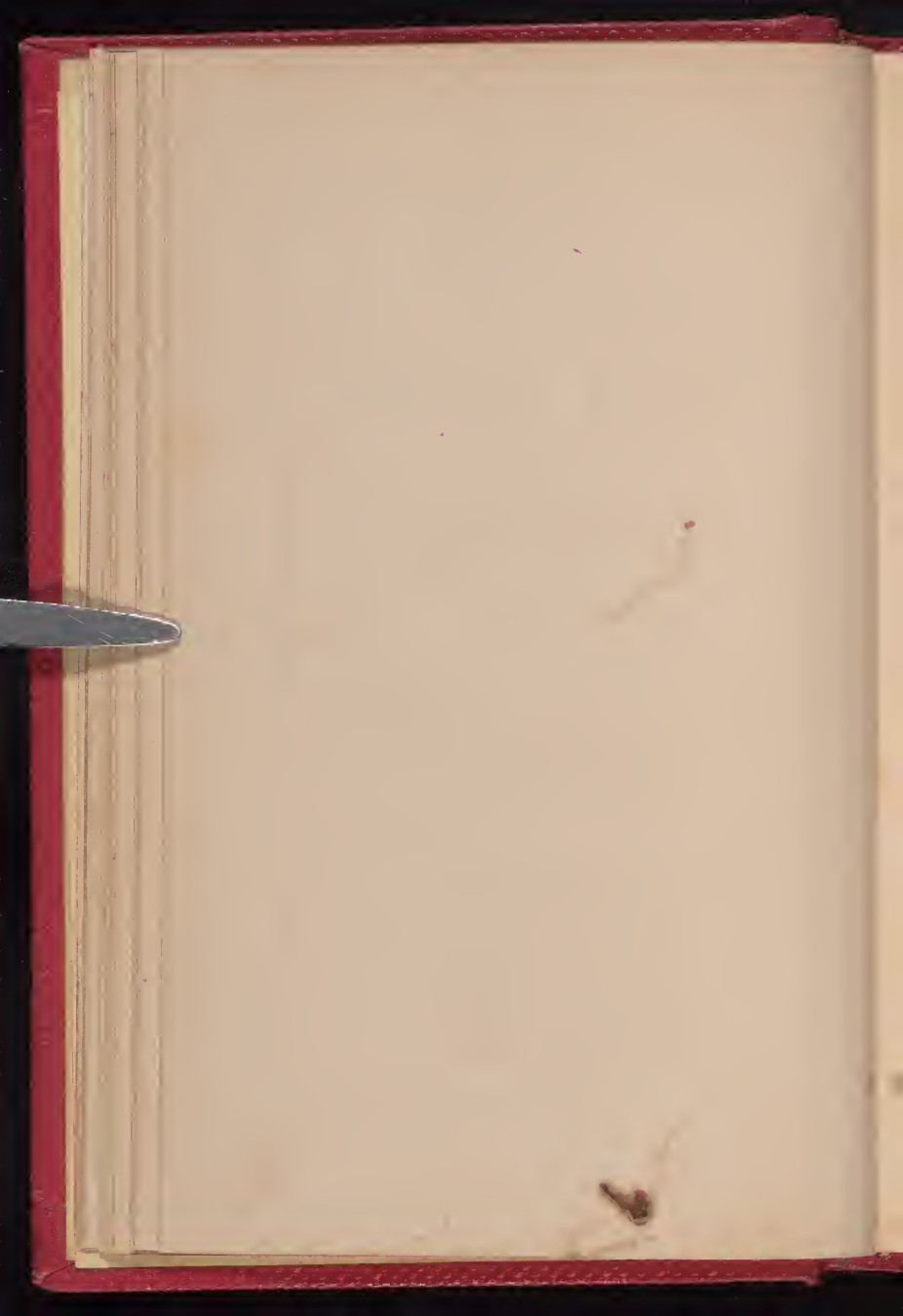
Ivy,	16
Japonica, Pyrus	7
Jasmine, Cape	96
Jasmine, White	98
Laurel,	48
Laurustinus,	54
Lily of the Valley,	47
Lily, Scarlet	11
Lily, Superb	52
Lily, White	139
Lily, White Water	38
Magnolia,	5
Maize,	85
Mallows,	107
Maple,	66
Mezcreon,	78
Mignonette,	95
Mistletoe,	24
Mountain Ash,	53
Mulberry, Red	137
Myrtle,	109
Nasturtium,	50
Oak Leaf,	36
Oleander,	136
Olive,	116
Orange Flower,	101
Peach Blossom,	58
Periwinkle, White	21
Pheasant's Eye,	2
Pink,	70
Plane Tree,	121
Palm Tree,	148
Pink, White	43
Pomegranate Flower,	23
Potato Blossom,	141
Privet,	13
Ranunculus,	82

Rose, Austrian	145
Rose, Bridal	55
Rose, Burgundy	92
Rose, Campion	17
Rose, China	90
Rose, Hundred Leaved	128
Rose, Multiflora	102
Rose, Musk	126
Rose, Wild	51
Rosebud Red,	127
Rosebud, White	68
Rosemary,	105
Rush,	31
Saffron,	32
Sage,	77
Service Tree,,	122
Snow Ball,	98
Snowdrop,	28
Sorrel, Wild	1
Sarwort, American	26
Star of Bethlehem,	124
Spindle Tree,	84
Sumach,	81
Sun Flower, Tall	67
Thistle,	108
Thyme,	87
Thyme,	118
Trefoil,	131
Tubrose,	106
Tulip,	140
Tulip, Red	20
Tulip Tree,	75
Tussilage, Sweet Scented	76
Valerian,	8
Violet, Blue	59
Violet, White	6
Virgin's Bower,	115

INDEX OF NAMES.

xv

Wall Flower,	72
Weeping Willow,	111
Wheat,	57
Witch Hazel,	146
Yew,	85



LEXICON OF LADIES' NAMES.

Abigail. Abby.

SIGNIFICATION . . . Father's Joy.
EMBLEM Wild Sorrel.
SENTIMENT Paternal Love.

THANKS, thanks to thee, my daughter,
For all thy tender care ;
Thou cometh like the sunbeam
To chase away despair.

Though age has cast its shadows
Along thy father's way,
Thy smile of light and gladness
Is like a golden ray.

I bless thee, my dear daughter !—
Thy father's light and joy !
God bless thee too, my dearest,
With peace without alloy !

Abilene.

SIGNIFICATION . . . Mourning.

EMBLEM Pheasant's Eye.

SENTIMENT Sorrowful Remembrance.

SAY not that the ties of affection are riven,
 Although to the grave thy torn heart has resigned
 her ;
 The mandate that called her freed spirit to heaven,
 But lengthened the ties that so fondly entwined her.

Then weep not for her,—she's but passed on before thee
 To unite in the rapturous anthems above ;
 Where sweetly her harp with the ransomed in glory,
 Is attuned to the theme of redemption and love.

Ay! joy in the thought, that to her it was given,
 To escape from earth's snares to the home of the blest ;
 Good, good was the word that removed her to heaven,
 For this dark world of sorrow might not be her rest.

In that far "better land" where no sin can assail her,
 And beyond the dark vale, which her Saviour once
 trod,

Full glorious her rest—then no longer bewail her—
 'T is the rest that remains to the people of God.

—ANON.

Aniline.

SIGNIFICATION . . . Excellent

EMBLEM Camelia Japonica.

SENTIMENT Unpretending Excellence.

THE fruit of thy lips and the fruit of thy labor,
Is fraught with all good to thyself and thy neighbor ;

Excellence springs not in the pathway before us,
But results from good deeds, as time passes o'er us.
The Camelia conceals no thorn by its beauty ;
So thou, no wrong motive while doing thy duty.
This flower boasts no fragrance for the breezes of
morn ;

Thou desirest no praise through thy earthly sojourn ;
But for every good deed, and each gentle word,
In heaven, thou 'lt surely receive thy reward.

Adelaide.

—

SIGNIFICATION . . Princess.

EMBLEM Cardinal Flower.

SENTIMENT . . . High Station does not confer Happiness.

—

THOUGH wealth around thee strow
 Jewels and splendor rare,
 Though costly flowers fill
 With fragrance all the air ;

Though servants on the wait,
 In humble servile fear ;
 Though flatterers call thee great,—
 And they may be sincere ;—

Hast never learned that splendor
 Can ne'er true joy impart ?
 Nor fragrance of sweet flowers
 Relieve a sadden'd heart ?

Nor faithful services
 Prevent disease and pain,
 Nor flattery's winning words
 Bring health to thee again ?

But if thy brow is twined
 With wreaths of love and peace,
 And if thy cultured mind
 To thee "a kindgom is ;"

Then high or low estate,
It matters not to thee ;
If mind and heart are great,—
These make thy destiny.

Adeliza.

SIGNIFICATION . . Nobleness.
EMBLEM Magnolia.
SENTIMENT Lofty Thoughts.

I LOVE to look upon thy brow
So lofty and so fair ;
The noble feelings of thy soul
Have placed their impress there.

I love to see thee firmly stand
Like rock 'mid ocean's wave ;
While error's surge is beating high,
Its fury thou dost brave.

Oh ne'er give up thy lofty aim ;
Thy noble purpose hold !
Thy high-born thoughts and noble deeds
Are wealth to thee untold.

A g u e s .

SIGNIFICATION .. Modesty.

EMBLEM White Violet.

SENTIMENT Modesty.

NATURE bestowed on thee the charm
Which guides to good and guards from harm ;
The gift of Nature, not of Art,—
Which ever will retain the heart.

'Tis Modesty—the maiden's gem,
Worth more than costly diadem,
Or myrtle wreath, the meed of fame,
Or deaf'ning shouts of loud acclaim.

When youth has flown, and age appears,
When nearly through this vale of tears,
Thy modest worth, and noble mind,
Will still to thee all true hearts bind.

Alberta. Albertine.

SIGNIFICATION . . All Bright.

EMBLEM *Pyrus Japonica.*

SENTIMENT Fairy's Fire.

SPARKLING and bright
Is thine eye of light,
Brightest of Eve's fair daughters ;
Gleamings of wit,
Oft flash from it,
Like sunbeams on the waters.

The rose has shed
On thy cheeks its red,
On thy neck is the lily's whiteness ;
Thy rounded arm
And graceful form,
Are fairy in their lightness.

With the morning bird
Thy voice is heard
In sweet melodious singing ;
And at twilight dim,
Thy cheerful hymn
On the silent air is ringing.

Thus pass the day
 In joy away
 Brightest of Eve's fair daughters !
 May sorrows fly
 Thy evening sky,
 Like mists from clear calm waters.



Alcega.

SIGNIFICATION . . Kindness.

EMBLEM Valerian.

SENTIMENT Accommodating Disposition.

We love thy kindly presence,
 When blessings make us glad ;
 Nor less sincere our welcome,
 When sorrow makes us sad.

For then thy cheerful kindness
 Our drooping spirits raise,
 And turns our lamentations
 To thankfulness and praise.

Thy smiles are like the sunshine,
 Enlivening all around,
 And in thy generous sympathy
 Is balm for sorrow's wound !

Aletheia.

SIGNIFICATION . . Truth.

EMBLEM White Crysanthemum.

SENTIMENT Truth needs no Protestation.

NAY, nay, my dear, speak not that word
And wake my dream of bliss!
Would'st have those pouting lips say, No,
The while thy eyes say yes?

That tell-tale blush the truth reveals;
Thy soul abhors deceit!
And when thou would'st thy thoughts conceal,
They to thine eyes retreat!

And there thy truthful soul shines out.
Undimmed, in every glance;
The child-like frankness of thy heart,
All other charms enhance.

Remember love, thy truth has been
The pole-star of my soul;
And should I ever wish to rove,
That star will still control.

Alfreda.

—
SIGNIFICATION . . . Peaceful.

EMBLEM Buck-Bean.

SENTIMENT Calm Repose.
—

WHILE all without is noise and strife,
Alfreda seeks repose
In the calm walks of quiet life,
From morn till evening's close.

The furious winds of passion's storm
In vain exert their power;
Ambition, pride, and cruel scorn,
Dwell not within her bower.

Such come not near to her whose heart
Is filled with love and truth;
Who consecrates to holy things
The early dew of youth.



Alice. Alicia.

SIGNIFICATION . . . Noble.

EMBLEM Scarlet Lily.

SENTIMENT High-Souled.

HAUGHTINESS and vanity dwell not in thy high soul; adulation seeks in vain a welcome to thine ear; thou passes't on amid the crowd, uncontaminated by its heartless folly and noisy mirth. Pure thoughts and holy, dwell within thee; upon thine ear fall no discordant notes,—sweetly attuned to Nature's voice, and listening only to the high and holy symphonies, such as angels might sing to answering angels in the choir of heaven.



Almeda.

SIGNIFICATION . . . A Strain of Music.

EMBLEM Bundle of Reeds.

SENTIMENT Music.

HARK ! what silvery music
 Floateth on the air ?
 In accents softly stealing
 On my listening 'ear ?
 Ah ! 't is music from the heart ;
 'T is Almeda sings !
 How it echoes through the soul,
 Touching all its springs.

Now in softer, sweeter strains,
 Soothing every care ;
 Then in deeper swelling tones,
 Breathing praise and prayer ;—
 O, the soul-inspiring strains,
 Full of peace and love ;—
 How they gently waft the soul,
 To the world above.

N. S. T.

Amanda.

SIGNIFICATION . . . To Send Away.

EMBLEM Privet.

SENTIMENT Prohibition.

I SEND away the fleeting joys
Which earthly wealth can give,
And all the honors fame bestows,
While here on earth I live.

I would not wish to pay my vows
At Fashion's lordly shrine,
Or 'mid the circles of the proud,
I would not wish to shine.

I would not that my rich attire
Should dazzle every eye,
Or that its brilliancy exeel
The gaudy butterfly.

These tempting joys, true happiness
I know can never bring ;
They only shine to lead astray
While time is on the wing.

But there are pleasures which I prize,
In value more than gold ;
Though unpretending they may be,
Their wealth is yet untold.

'T is in a quiet, humble life,
 Such solid peace I find,
 'T is with a heart resigned to God,—
 'T is a contented mind.

N. S. T.

Am nry.

SIGNIFICATION Immortal.
 EMBLEM Amaranth.
 SENTIMENT Immortality.

HERE, the fairest flowers which bloom,
 Only blossom for the tomb ;
 And golden-tinted cloudlets fly,
 Like vapors from the summer sky.
 Thus vanishes the morning dew,
 Thus fades from sight the rainbow's huc,
 And all things lovely, fair, and gay,
 Appear a moment — then decay.

Christian ! in that world above,
 Where all is peace, and joy, and love,
 Immortal flowers, with fragrant breath,
 Forever bloom, and fear not death ;
 Immortal joys fill up the days,
 Immortal songs of sweetest praise,
 From every heart and lip ascend,
 And in harmonious chorus blend.

Amelin.

SIGNIFICATION . . Friendship.

EMBLEM Box.

SENTIMENT Constancy in Friendship.

THERE'S beauty in the morning dew
That gems each leaf and spray ;
But when beneath the sun's bright beams,
It soon will pass away.

And sweet the songs that greet the ear
From birds at dawn of day ;
They fill our hearts with cheerfulness,—
But soon they pass away.

The fragrance sweet of buds and flowers
We meet where'er we stray ;
We love their silent influence,
But soon they pass away.

We love the sunbeams of the morn,
And they cheer us all the day ;
True friendship, constant like the sun,
Will never pass away.

Aminu. Amy.

SIGNIFICATION . . . A Friend.

EMBLEM Ivy.

SENTIMENT I have found one true heart.

WHEN love with fortune changed,
 And false friends fled afar,
 Thou true to me remained,
 Like yon bright evening star.

Blest be the star so bright
 That shone around my way,
 And by its lucid light
 Turned darkness into day.

The thick and sombre clouds
 Hid not thy gentle flame;
 They strove thy light to shroud,—
 It still shone on the same.

May naught e'er dim the star
 That cheered this heart of mine;
 And may some friendly orb
 So bless both thee and thine.

Angela. Angelina. Angelica.

SIGNIFICATION . . . A Messenger, an Angel.

EMBLEM Rose Campion.

SENTIMENT Love's Messengers.

MY sister dear!
 To thee kind wishes now we bring,
 Warm, gushing from affection's spring; —
 Thy bridal day
 Has dawned, — O, wilt thou, sister, take
 And keep it, fondly, for my sake,
 This sweet bouquet?

My sister dear!
 When thou art absent, far away,
 Will not the flowers of this bouquet
 Bid sad thoughts come?
 Of parted loved ones will it tell,
 And the blest spot ye love so well,
 Our early home?

Yes, sister dear!
 Though faded, — withered it may be,
 Full many a tale 't will tell to thee,
 Of happy hours;
 When in merry childish glee,
 We plucked the flowers beneath the tree
 And called them ours.

Ah! sister dear!
 Those same loved flowers grow there yet,—
 The pink, the rose, and mignonette,
 With violets near;
 O, when thou'rt gone, in lonely hours,
 I'll love and guard those favorite flowers
 To memory dear.

N. S. T.

Ann. Anna. Annie.

SIGNIFICATION . . Gracious, One who gives.

EMBLEM Bonus Henricus.

SENTIMENT . . . Goodness.

We know thou art benevolent,
 Sweet Annie, by thy smile,
 Which shows a heart that's true and good,
 Not false and full of guile.

There are some treacherous smiles, Annie,
 Which charm, but to beguile;
 We know that thine is true, Annie,
 But beware of the flatterer's smile!

Thou art "one who gives," Annie,
 Oh, give thy heart to me!
 And with thy heart thy hand, Annie;
 Then I'll most happy be.

Aphia.

SIGNIFICATION . . . Fruitful.

EMBLEM Hollyhoek.

SENTIMENT Fruitful.

WORDS are the leaves, and deeds the fruit,
Which to us shows the heart — the root ;
Good deeds proclaim the deep, rich soil,
Which sends forth prayers, and gifts, and toil.

Some hearts there are quite full of faith,
But heed not what the Scripture saith,
That faith, alone, no good will do,
But works must have a part there, too.

Love, joy, and peace, a happy band,
With meakness, truth, go hand in hand ;
While mercy, faith, and charity,
Produce the fruits we love to see.



Arabella.

SIGNIFICATION . . Fair Altar.

EMBLEM Red Tulip.

SENTIMENT Declaration of Love

LADY, at thine altar fair,
I my love to thee declare,
Sueing for the heart and hand
Of the fairest in the land ;
Wilt thou go with me to dwell,
Fair and lovely Arabell ?

Lady, at thy gentle shrine
Bows this faithful heart of mine ;
With my heart, my wealth I bring ;
Take, O, take my offering !
Wilt thou go with me to dwell,
Sweet and lovely Arabell ?

Lady, take this proffered ring ;
At thy feet myself I fling ;
On thy cheek the blushes rise,—
Humid drops are in thine eyes,—
Thou wilt go with me to dwell,
Dearest, dearest Arabell !

Arctura.

SIGNIFICATION . . . A Fountain.

EMBLEM White Periwinkle.

SENTIMENT Pleasures of Memory.

MEM'RY'S a fountain from which there springs
 Sweet visions of our youth,
 Of those loved ones whose hearts were filled
 With love and joy and truth.

Sweet the remembrance of the past,
 Of friends and friendship's hours,
 Of lovely ones who've passed away
 To the land of fadeless flowers.

Sweet to recall their looks and tones,
 The songs they sung of yore, —
 The pleasant walks in shady groves, —
 The books of ancient lore : —

Which oft our pleasant hours employed ;
 And converse sad or gay,
 Just as youth's spirit prompted us ; —
 Those hours have passed away !

Yet Mem'ry brings them back again,
 Those happy, youthful hours !
 And fragrance sweet exhales therefrom,
 As oft from withered flowers.

Aerenth.

—

SIGNIFICATION . . Misfortune.

EMBLEM Aloe.

SENTIMENT Think not the Almighty wills one idle pang, one needless tear.

—

DESPAIR not, though dark be the cloud,
 "Behind is the sun still shining;"
 Thou seest but its gloomy side,
 "Each cloud hath a silver lining."

Look through the clouds to Him beyond,
 And cease thy wrong repining;
 Although the cloud to thee seems dark,
 Yet, "The cloud hath a silver lining."

The Lord wills not one idle pang,
 One needless tear designing;
 When gloomy darkness reigns around,
 "Each cloud hath a silver lining."

Oh, thou to whom afflictions come,
 And leave thee sad and pining;
 Remember well this pleasant truth,
 "Each cloud hath a silver lining."

Aspasia.

SIGNIFICATION . . Beautiful and Learned.

EMBLEM Pomegranate Flower.

SENTIMENT Mature and Beautiful.

WHEN sweet budding Spring and blooming Summer have forever passed, not long does soft, fresh beauty linger on the cheek of Autumn; yet, beauty of another kind, brilliant and deep and gorgeous, presents itself to our admiring gaze, and wins its way to our own inmost hearts.

Thus she who spends the bright Spring and Summer of existence, in gathering and treasuring within her expanding mind, the pure gems of wisdom, — will in Autumn prove wisely beautiful.

Such beauty fades not as fade the flowers, but grows more glorious and attractive as the Winter of age approaches; then when freed from earth's enfoldings, it blooms forever fadeless in immortal gardens.



Atlanta.

SIGNIFICATION . . Swift Runner.

EMBLEM Mistletoe.

SENTIMENT I surmount all difficulties.

I LOVE to roam over the mountain,
 Or to sit by the flowing fountain,
 Where waters dash wildly and free ;
 I love the rude whirlwind's rushing,
 I love the cataract's gushing ;
 All this is pleasure to me.

Now loudly the thunder is roaring,
 In torrents the rain-storm is pouring,
 And the lightning's flashing wild ;
 I love in such stormy weather
 Swiftly to bound o'er the heather,
 For I am Nature's child.



Augusta.

SIGNIFICATION . . Grandeur.

EMBLEM Dahlia.

SENTIMENT Elegance and dignity.

THOUGH noble thy station, fair girl,
And diamonds encircle thy brow,
Though decked with bright jewels and pearl,
Art happy? Say, happy art thou?

Though robes that are costly and rare,
Fall gracefully over thy form,—
Is thy bosom less burdened with care?
Are thy feelings more genial and warm?

Ah! no; we well know that thy heart
Loves not the false splendors of wealth;
To thy bosom no joy they impart;
To thy cheek, not the blooming of health.

Make friends of thy treasures, fair girl!
Strew blessings around in thy way,
And seek for thyself the rich pearl
That ne'er will grow dim or decay.

Barbura.

SIGNIFICATION . . . Stranger.

EMBLEM American Starwort.

SENTIMENT Welcome to a Stranger.

Be kind to the stranger !
No words can express
His heart-aches and sadness,
And deep loneliness ;
When thoughts of sweet home
Are thronging his mind,
Your kindness and sympathy,
Oh ! let him e'er find.

Be kind to the stranger !
His feelings wound not ;
Think thou that sometime
Such may be thy lot ;
Should'st thou wander afar
From thy friends and thy home,
Thou'lt pity the stranger
Who is destined to roam.

Bathsheba.

SIGNIFICATION . . . Seventh Daughter.

EMBLEM Cinque Foil.

SENTIMENT Beloved Daughter.

How blessed and how beautiful a mother's love ! How sweet the interchange of affection between mother and daughter ! There is nothing this side of Heaven, more beautiful than the sweet dew of love, shed from a mother's soul, upon the budding flower, — the fresh young heart of a daughter. It is like the sparkling drops which silently descend to refresh and invigorate the rose, remain a moment there, — then exhale to heaven. Thus within the recesses of a heart, which receives gratefully the gentle, holy instructions of a revered parent, sweetest drops of filial love are gathered, which purify the soul ; then they are borne by angels to the high court of Heaven, as an offering meet, acceptable to Him, who, when on earth a wanderer, honored his mother through life's varied scenes, and spake to her sweet words of consolation, even in death's dark hour.

Bentrice.

SIGNIFICATION . . One who blesses, or makes happy.

EMBLEM Snowdrop.

SENTIMENT I am not a Summer Friend.

WHEN winter approaches,
The summer bird flies,
To far distant lands,
To sunnier skies.

When sorrow o'ertakes us,
False friends fly away;
The true-hearted remain
Till a happier day.

Like the beautiful snowdrop,
So pure and so white,
They enliven the day,
And cheer the dark night.



Bertha.

SIGNIFICATION . . . Brave, Famous.

EMBLEM Crown Imperial.

SENTIMENT Power without Goodness.

I CARE not what the world may say
Of wealth, and birth, and fame ;
If virtue, truth, are wanting there,
All else is but a name.

Your praise may echo far and wide,
O'er mountain, hill, and dell ;
I'd sooner win a lowlier bride,
Who 'd love me long and well.

Your haughty rule I will not bear ;
I tell you now — I'm free !
For a long time your slave I've been —
I will no longer be !

Beauty oft wins the heart of man,
And fascinates his soul ;
But when he finds no goodness there
He scorns the base control !

Bessy. Betsey.

SIGNIFICATION . . . Blessed.

EMBLEM Everlasting.

SENTIMENT Always Remembered.

THE blessings of the poor
Of those who are in need,
Shall rest upon thy head,
For every generous deed ;
For sympathy's kind tear,
For those who're in distress,
For recalling absent hope
To brighten and to bless ;
For pointing them to Heaven
For comfort and for joy,
They'll bless thee with their love,—
True love without alloy.



Bethia.

SIGNIFICATION . . . Daughter of the Lord.

EMBLEM Rush.

SENTIMENT Docility.

BLEST art thou by such a Father,
Humble "Daughter of the Lord;"
May thy thoughts, and words, and actions,
With his Divine commands accord.

May the graces of his Spirit,
Ever lovely, fill thy heart;
May its influence, constant, active,
Help thee to perform thy part.

Ever kind, and ever giving,
Nought can overcome thy love;
Ever merciful and faithful,
Like to Him who rules above.

Like to Christ, thou doest good
To the ignorant and lowly;
Cheer the sick, and raise the faint,
Teach them to be pure and holy.

Beulah.

—
 SIGNIFICATION . . Married.
 EMBLEM Saffron.
 SENTIMENT Marriage.
 —

THE words are all spoken,
 Thy lips breathe the vow,
 Youth's ties are all broken,
 Thou must go with him now.
 Unto him thou hast given
 Thy affection and truth,—
 E'en the name is abandoned
 Thou hast borne in thy youth.

Loved father's protection,
 Fond mother's caress,
 Thy sister's affection,
 Though thou lov'st them no less,—
 All these could not stay thee,
 When thy heart bids thee go,
 With him who has won thee,—
 His truth thou shalt know.

Thy smile in his dwelling
 Like sunlight will shine;
 Thy heart round thy husband,
 Its tendrils will twine.

Thy youthful affection
 Will bless all his hours,
 And oft prove refreshing,
 Like soft summer showers.

Birch.

SIGNIFICATION . . . An Evil.
 EMBLEM Barberry.
 SENTIMENT Sour-tempered.

Why that frown upon thy brow?
 Why cross looks, and crosser words?
 Knowest thou not such looks and tones
 Pierce the heart like two-edged swords?

Scolding never does thee good,
 Ne'er brings comfort to thy heart;
 And when in a furious mood,
 Like a demon sure thou art.

Sad and sullen wilt thou be?
 Knowest thou not that, too, is wrong?
 Well! whatever else I hear—
 Save me from a woman's tongue!

Blanch.

SIGNIFICATION . . Fair.

EMBLEM Gilliflower.

SENTIMENT She is fair.

SOME praise a lovely form,
Some, beauty of the face;
The beauty of the soul
Is woman's truest grace.

The fair and noble brow,
The lips of vermeil hue,
The cheeks of tinted rose,
And eyes of heavenly blue,—

A form of Venus mould,
A hand so small and white,
A foot of perfect form,
And step like fairy's, light.

Such beauties we admire,
Yet soon they fade away!
But loveliness of soul
Will never know decay.

Candace.

SIGNIFICATION . . . Contrition.

EMBLEM Yew.

SENTIMENT Sorrow.

THE bright days of childhood and youth have departed,

When madly from duty I wandered astray ;
Now weeping and lonely and all broken-hearted,
I sigh for the days I have wasted away ;
O ! could they return with what earnest devotion
I'd seek for the pathway of virtue and truth ;
But vainly I struggle with tearful emotion,—
I cannot recall the lost days of my youth.

Return, gentle hope, pour thy balm on my sorrow,

And say there is peace for the penitent mind,
Though dark be my night, joy shall dawn on the
morrow,

And the humble in heart sweet forgiveness shall
find.

ANON.

Caroline.

SIGNIFICATION . . . Brave, Valiant.

EMBLEM Oak-leaf

SENTIMENT Bravery and Humanity.

TAKE courage, gentle Caroline,
Be valiant for the truth ;
What higher, holier mission
Could be given to thy youth ?
Though the teacher's task be thankless,
Though folly at thee sneer,
And Envy lend to Slander
A willing, list'ning ear ; —
Let not such malice daunt thee,
Thy talents well improve,
Let thy motto be "Excelsior,"
And firmly onward move.
Then, courage, gentle Caroline !
Thou art valiant for the truth ;
No higher, holier mission
Could be given to thy youth.

CASSIARA.

SIGNIFICATION . . . Foreseeing.

EMBLEM Holly.

SENTIMENT . . . Foresight.

THOU lookest to the future,
What seest thou there?
Bright gleanings of hope,
Or dark clouds of despair?

It's well we know not
What the future will bring,
From anticipation
Many pleasant thoughts spring.

And while we are dreaming,
Dark clouds may arise,
And hide from our vision
The bright summer skies.

Our dream then is over,—
It has given us bliss,
And strength for the future
Whatever it is.

If fancy portrays
Naught but visions of woe,
No glimmer of hope,
Should we ever here know.

We know that the future
 May not be to us bright,—
 Let us trust in our God,
 And all will be right.

Catharine.

SIGNIFICATION . . . Pure.

EMBLEM White Water-Lilly.

SENTIMENT Purity and Beauty.

PURITY dwells in thy meek blue eye,
 As in the cloudless summer sky ;
 Thy soft, kind words, and sunny smile,
 Tell of a heart that's free from guile.

No dark thoughts rise in thy gentle soul,
 No sinful emotions there hold control ;
 Thy face is a mirror, calm and bright,
 Showing thy heart in its own pure light.

No shadows there from sins of earth ;
 Thy soul must be of heavenly birth ;
 So lovely, nought earth-born can be,
 So full of sweet simplicity.

Charlotte.

SIGNIFICATION . . Valiant Spirited.

EMBLEM Hepatica.

SENTIMENT Confidence.

ART sure art thou right? 'tis pleasure to see,
A spirit so light, so bounding and free.
Put forth all thy strength and thine energy too;
Then ealm perseverance will carry thee through.

Thy firm, dauntless step, and thy confident eye,
Shows much moral power on which to rely;
Onward and upward, let thy motto be,
From all sordid cares, this will set thy soul free.

Manifold duties like mountains arise,
For their fulfilment seek help from the skies.
Look upward to Heaven,—not down to the sod!
Confide in thyself, and trust in thy God.

Thy life may be short,—thy bravery prove,
By firmly performing thy labors of love;
If soon they are finished, soon thou wilt go home,
And receive thy reward for duties well done.

Chloe.

SIGNIFICATION . Green Herb.

EMBLEM Evergreen Thorn.

SENTIMENT Solace in Adversity

WHEN sorrow's clouds above us roll,
And all around is dark and drear,
How sweet the sympathy of soul,
Which greets us then from friends sincere.

When wandering lone some stormy night,
We look for some bright, friendly star,
Not e'en a raylet meets our sight,
To guide us to our home afar.

At length we see one pitying cloud
Rend her ethereal veil apart,
And there, behind the misty shroud,
A star peeps forth to glad the heart.

Ah! then we find our homeward path,
And with light step pursue our way;
The star of hope and holy faith,
Will never lead our feet astray.

Thus Chloe comes like that bright star,
When wandering lone in sorrow's night;
Her smile of love disperses far,
The clouds which gathered o'er our sight.

Her cheerful words and soothing voice,
 Come to our hearts like angel-strains,
 And bid us in our God rejoice,
 For He will make all bright again.

Christina.

SIGNIFICATION . . Christ's Messenger.

EMBLEM Iris.

SENTIMENT Message.

SEND thy message through the earth,
 To every land, o'er every sea,
 "Peacc on earth, good will to men,"
 Then shall come the jubilee.

Then shall war, and vice, and crime,
 All be banished from our earth;
 All shall learn these truths sublime,
 In palace hall, by cottage hearth.

Go, thou messenger of Christ,
 Let thy words His precepts teach,
 And by pure example, too,
 His blessed Gospel ever preach.

Ciseline.

SIGNIFICATION .. Short Sighted.

EMBLEM Musk, Crow-foot.

SENTIMENT Weakness.

I GREET in song that sweetest one
Whom I can ne'er forget,
Though many a day is past and gone
Since face to face we met.
Who sings this votive song for me,
A man or woman, he or she,
To her, my absent one shall welcome be.

Kindoms and lands are nought to me,
When with her presence weighed ;
And when her face no more I see,
My power and greatness fade ;
Then of my wealth I reckon none,
But sorrow only for mine own ;
Rising and falling thus, my life moves on.

CHARLES II.



Clara. Clarissa.

SIGNIFICATION . . Clear, Bright.

EMBLEM White Pink.

SENTIMENT Fair and Fascinating.

GLITTERING things there are of earth,
That prove to be of little worth ;
Brightly as pure gold shine they,
Luring us from truth away.

Pleasure fascinates the soul,
And reason bows to her control ;
Wit, which flashes like a spark,
Dazzles, and then leaves us dark.

But we know that Clara's face,
Mirror's forth a soul of grace ;
She is like a diamond bright,
Sending out the purest light.

Clearly does a light divine
All along her pathway shine ;
Teaching us our lives were given
To prepare our souls for Heaven.

Clementine.

SIGNIFICATION . . . Mild-tempered.

EMBLEM Clematis.

SENTIMENT Mental Excellence.

No lines of beauty can we trace
In thy sweet, quiet, placid face ;
No rosy checks, no sparkling eyes,
Present themselves for beauty's prize.

No costly gems entwine thy hair ;
Upon thy neck no jewels rare ;
Though simply clad in lowly guise,
Thou art quite lovely in our eyes.

The ornament which thou dost wear,
With which no other can compare,
Is thy sweet temper, quiet, meek, . .
Which God himself has bid thee seek.

And in his sight, 't is of more worth,
Than all the richest gems of earth ;
Their dazzling beauty time may mar,—
Thine will shine ever, like a star.

Constance.

SIGNIFICATION . . . Constancy.

EMBLEM Blue Hyacinth.

SENTIMENT Constancy in Love

“CONSTANCE, dear, my fortune's gone,
I cannot claim my bride.
Life's road I'll walk all sad and lone,
Without you by my side.

“Five hundred pounds ! I've lost it all !
And am a ruined man ;
Alone, alone, I'll stand or fall,—
I will not claim your hand.”

“I'm glad you need five hundred pounds,”
The maiden laughing said !—
The lover's wonder was profound !
He sadly thus replied :—

“Is this your bosted love for me ?
How have I been deceived !
That you would laugh at misery,
I never would believe.”

“I'm glad you need five hundred pounds,”
And the maiden laughed anew,
“This riddle now I will expound,—
Then say if I am false to you.

“ My fortune’s large ; five thousand pounds
 Is nought for me to give ;
 My wealth of love still more abounds,—
 Wilt now my hand receive ? ”

Cornelia.

SIGNIFICATION . . . Enduring.

EMBLEM Cornelian Cherry Tree.

SENTIMENT Durability.

SUFFERINGS various, have been thy lot,
 Yet one repining word escaped thee not.
 Sickness on thy frail form has laid its hand,
 And oft has kept thee from the social band.
 Reason has wavered, fallen from her throne,
 And thou with wayward fancy left alone.
 Thou too hast suffered from the loss of friends,
 And nought on earth, for them, can make amends.
 Thy heart was given to one in early youth,
 Who but deceived and mocked thy trusting truth.
 Yet trials all of body, heart and mind,
 Have left thee calm, and cheerfully resigned.
 Enduring all with patience, lowly, sweet,
 And humbly leaning at the Saviour’s feet ;
 Woman’s enduring nature sure is thine,
 Which bears so much with patience so refined.

Cynthia.

SIGNIFICATION . . Chaste.

EMBLEM Lilly of the Valley.

SENTIMENT Delicacy.

WHERE shall we an emblem find,
A match for Cynthia's form and mind ?
Will the rose of radiant hue,
Of her mind be emblem true ?

Will the pink in varied dress
Half express her loveliness ?
Can the gorgeous Tulip be
Emblem of her modesty ?

No type of Cynthia can we see
In Dahlia's pride and dignity ;
What lovely flowers, then, shall we find,
An emblem true of her pure mind ?

The lovely Lilly of the vale,
With fairy bells, so snowy pale,
Blooming alone in shady dell,—
This flower will symbolize her well.

Daphne.

SIGNIFICATION . . . A Laurel.

EMBLEM A Laurel.

SENTIMENT Oh! What a goodly outside
falsehood hath!

THE girl whose heart is all deceit
Is not the girl for me ;
Though eyes shine bright, and lips smile sweet,
I from the false one flee.
For well I know her treach'rous arts
To conquer and to break men's hearts,—
A belle is not for me.

The beauty many prize so high
Is not the kind for me ;
My heart it will not satisfy,
Face and soul oft disagree ;
But when there's loveliness of heart,
Which to the face its charms impart,
Then there's the girl for me !



Deborah.

SIGNIFICATION . . . A Bee

EMBLEM Broomcorn.

SENTIMENT Industry.

BROOMCORN the emblem of industry rare
Has modesty's mien, and a busy air ;
What art thou doing, young Deborah, say ?
Sweeping the cobwebs of error away ?

Removing the dust from thy busy brain ?
Dismissing Folly with her silly train ?
No idle intruders must tarry here now ;
I plainly can see by the frown on thy brow.

Aye! sweep away, maiden, then shalt thou see,
How a beautiful soul of purity,
Can overcome error, and falsehood, too,
By loving only the good and the true.

Pure thoughts and sweet fancies shall dwell with
thee ;
Thy mind shall ever be noble and free ;
If thou 'lt search for truth, and its rich fruits glean,—
Sweep away, Deborah ! make thy heart clean.

Delia.

SIGNIFICATION . . . Brave.

EMBLEM Nasturtium.

SENTIMENT Honor to the Brave.

WILLINGLY we honor the brave spirit, who meets unshrinkingly life's great duties, and with all her armor on, walks boldly forth to victory. Her shield and breastplate virtue; modesty her guard; holy faith her watch-word. Thus protected she fears not the assaults of folly, vice, and crime; she guards the citadels of her heart, with such assiduous care, that no lurking foe can there gain access.

When temptation comes in any form, it is bravely met, and surely conquered. All life's varied ills are borne with fortitude invincible; and when life's last struggle is over, the spirit which thus has gained a victory, shall wear a conqueror's crown, and reign forever in that blessed land, which the Almighty King grants to those, who on the great battle-field of life, have overcome the enemies of truth, and love, and holiness.

Demaris.

SIGNIFICATION . . . Little Woman.

EMBLEM Wild Rose.

SENTIMENT Simplicity.

DEMARIS, to what can we compare
Thy form and face and gentle air?
To the simple, sweet, wild rose,
The most fragrant flower that blows?
To the nightingale that sings,
Sweetest of the birds' of spring?
To the little busy bee,
Emblem of neat industry?
Gathering her golden store
To feast upon when summer's o'er;
To a small but precious stone,
Whose real worth is all unknown?
To the pearl which lies asleep
Beneath the waves of ocean deep?
Like unto a gem thou art,—
Happy he, who wins thy heart!

Diana. Diantha.

SIGNIFICATION . . Luminous.

EMBLEM Superb Lily

SENTIMENT Splendor.

THE sun in splendor rises
 To bless us with its light;
 He sets in splendor richer,
 When coming is the night.

The evening stars shine o'er us,
 With brightness all their own,
 While Luna's gentle presenee
 Fills her majestic throne,—

And sheds her beams of silver
 Like light from beauty's eyes;
 She lights the lovely valleys
 And the o'er-arching skies.

Alas! that all this beauty
 Is borrowed! every ray
 Reflected here so sweetly,
 Shines from the King of day.

So those who worship beauties,
 Will learn this lesson soon;
 Some shine with borrowed splendor,
 As ever does the moon.

DORR.

SIGNIFICATION . . . A Gift, a Present.

EMBLEM Mountain Ash.

SENTIMENT A Talisman.

BLOSSOMS rich and rare,
Bright with pearly dew,
For you, my lady fair,
I've call'd for you!

Hopes ever fondly twine
Round thee when I'm afar,
For thou dost ever shine,
My constant star.

Sweeter than the rose,
The mem'ry of thy love;
My heart with rapture glows
Like that above.

This gift, O fair one take!
It doth my heart betray,
And prize it for my sake
When far away.

N. S. T.

Dorothy.

SIGNIFICATION . . . Gift of God.

EMBLEM Laurustinus.

SENTIMENT A Token.

“THE gift of God !” what favors have we,
Which are not sent us from above ?
Every good and welcome blessing,
A token is, of our Father’s love.

Joyous Spring in youthful beauty,
Comes to greet us with her smiles ;
Summer’s sweet and lovely flowers
Win our hearts, and care beguiles.

Autumn with her golden harvests,
Fills our hearts with gratitude ;
Winter comes with social blessings,
And loudly sings, God’s gifts are good.

Above, beneath, around, within,
We share his blessings day by day ,
Oh ! may we learn His praise to sing,
Nor cast His precious love away.

Cath.

SIGNIFICATION . . . Happy.

EMBLEM Bridal Rose

SENTIMENT Happy Love.

THERE is a flower, whose petals bright,
 Ope'd when our eyes first saw the light ;
 No blasting winds, no storms can move,
 This blessed flower — a Mother's Love.

Another bud fast swelled to birth,
 And flung its fragrance sweet o'er earth ;
 That flower to us a friend oft proves,—
 The blossom of Fraternal Love.

Another still, go search around
 For this sweet bud ; 'tis seldom found ;
 The flowers of Friendship, faithful, true,
 In sorrow's hour it blooms for you.

There is a flower, than this more fair,
 Which breathes its sweetness on the air ;
 Its fragrant breath can warm the heart,
 And deepest joy to it impart.

This sacred flower is — Wedded Love,
 And sent to mortals from above ;
 Oh, kindly, gently guard this flower
 With tender care, from hour to hour.

If watched with care, 't will ever bloom
 Along thy pathway to the tomb ;
 And should death here its tendrils sever,
 Renewed in Heaven, 't will bloom forever.

•••••

C a w i n n a .

SIGNIFICATION . . . Winning Happines.

EMBLEM Crocus.

SENTIMENT Gladness.

Ah, thou merry little sprite,
 Laughing, dancing with delight ;
 Happiest of happy girls,
 With bright eyes and silken curls.

Had'st thou wings thou sure would'st fly
 Like the bird in yonder sky ;
 Would'st sing forth a joyous lay,
 And fly, singing, all the day.

Chasing bees, thou merry elf ?
 Would'st get honey for thyself ? —
 Gather it from every flower ;
 Thus enjoy life's sunny hour.

“Winning happiness,” art thou ? —
 May no cloud came o'er thy brow ;
 May life's sunshine make thee glad,
 And no storms e'er make thee sad.

Soon will Summer days be past ;
 Soon to thee will come the last ;
 Then thou'lt fly on angel's wing,
 And in Heaven with angels sing.

Eleanor.

SIGNIFICATION . . Fruitful.

EMBLEM Wheat.

SENTIMENT . . . Prosperity, Riches.

WHAT doest thou with boundless wealth ?
 Can it bring content and health ?
 Can riches free thee from distress,
 Or ensure true happiness ?

If riches have been given thee,
 Truly greatful should'st thou be ;
 They may many a joy impart,
 But cannot buy a feeling heart.

Thou can'st not on thy wealth rely,—
 Oft it taketh wings to fly ;
 Wisely dispense thy precious store,
 And gain the blessings of the poor.

Electa.

SIGNIFICATION . . . Chosen.

EMBLEM Peach Blossom.

SENTIMENT Here I fix my Choice.

"HERE I fix my choice," Electa,
 Here confess my love to thee ;
 Can I gain so rich a treasure
 As thy love would bring to me ?

Though life's path is strewn with roses,
 There, too, thorns spring wild and free ;
 Yet I'll walk this thorny pathway
 Bravely, — if thou'lt go with me.

I will not tell thee all is radiant,
 For dark days will surely come ;
 But with mutual faith and kindness,
 Love will light the darkest home.



Eliza. Elizabeth.

SIGNIFICATION . . . God hath sworn.

EMBLEM Blue Violet.

SENTIMENT Faithfulness.

THOU tender object of my early love,
 How shall I all my grateful homage prove ?
 Thy young affection saved my erring youth,
 How could I stray, when all thy soul was truth ?

When bright prosperity, with swelling tide,
 Had filled my cup, and all my wants supplied ;
 My prospects fair, serene, without a cloud,—
 Thy sweet injunction came, “ O be not proud ! ”

And when revenge and malice sought to wrong,
 And bore me from the home I'd loved so long,
 Thou still went with me, and thy tender hand
 Was more to me than arms of martial band.

And thus through life, in sickness and in health ;
 In poverty and want, in ease and wealth,
 Thou wert my angel-guide, my faithful friend ;
 Aye ! thou hast kept thy faith e'en to the end.

ANON.

Ella.

SIGNIFICATION . . . Valor.

EMBLEM Fennel.

SENTIMENT Strength.

I YIELD my heart to thee, Ella,
I yield myself to thee;
Thy skill and valor I admire,
And resign my liberty.

I bow before thy truth, Ella,
Thy fervent love of truth;
Thine innocence and purity,—
Those brightest charms of youth.

To thy noble strength of soul, Ella,
To thine ardor for the right;
And to thy gentle graces
I yield, thy captive knight.



Ellen.

SIGNIFICATION . . Strong.

EMBLEM Allyssum.

SENTIMENT Worth beyond Beauty.

THERE is a strength in Ellen's heart,
Which not to all is given;
'Tis not attained by fashion's art,
'Tis nought that mortals can impart,—
It is the gift of Heaven.

When o'er the stormy sea of life,
Her little bark is driven,
When every wave 's with danger rife,
She seeks a shelter from the strife,—
By trusting all to Heaven.

She feels that beauty nought can give,
To comfort life's last even;
And therefore strives each day to live,
That strength divine she may receive,
To walk the path to Heaven.

Elmira.

SIGNIFICATION . . Of high Birth.

EMBLEM Amaryllis.

SENTIMENT Haughtiness, Pride.

“THE curl of that proud lip,
The flash of that eye,
The swell of that bosom,
So full and so high ;
Like foam of the sea-billow,
Thy white bosom shows,
Like flash of red levin
Thine eagle eye glows ;
Ha! firmly and boldly,
So stately and free,—
Thy foot treads this chamber,
As bark rides the sea :
This likes me — this likes me,
Stout maiden of mould,
Thou woost to purpose —
Bold hearts love the bold !”

MOTHERWELL.

Emeline. Emily.

SIGNIFICATION . . . Beloved.

EMBLEM White Rose-bud.

SENTIMENT Thou hast stolen my affection.

AH! Emily, it grieveth me,
To speak my firm belief,
But facts, those stubborn things, affirm,
Thou art an arrant thief!

Ah! e'en from me thine early friend,
Nay, dearest do not start;
Thou hast relentlessly purloined
What most I prize,—my heart!

Say not it is a worthless thing,
Its loss I must bemoan,—
But still I'll let it rest, if thou
Wilt give to me, thine own.

ANON.



Emma.

SIGNIFICATION . . . Loved One.

EMBLEM Peruvian Heliotrope.

SENTIMENT I love you.

I LOVE thee Emma, truly love,
 More than I dare to tell ;
 My heart and soul are all thine own ;
 I'll ever love thee well.
 My heart shall ever constant prove,
 Most faithful will I be ;
 And as the needle to the pole,
 So true I'll turn to thee.

I love thy quiet, thoughtful mind,
 Thy modesty and truth ;
 I love thy manners, so refined,
 And thy confiding youth ;
 I love thine outward beauty,
 But more than that, I prize
 Thy pure devoted piety,—
 Beauty which never dies !

Estella.

SIGNIFICATION . . . A Star.

EMBLEM American Cowslip.

SENTIMENT You are my Divinity.

“WHO has not looked upon her brow
Has never dreamed of perfect bliss;
But once to see her is to know
What beauty,— what perfection is.

“Her charms are of the growth of Heaven,
She decks the night with hues of day;
Blest are the eyes to which 'tis given,
On her to gaze the soul away.”

Written in the 12th Century, by
PIERRE ROGGIERS.



Esther.

SIGNIFICATION . . . Secret.

EMBLEM Maple.

SENTIMENT Reserve.

We do not like thy shy reserve,
Come throw thy veil aside ;
For those who do not know thy heart,
Call modesty but pride.

Esther, to us thy heart is hid,
Like flower in yonder glade ;
Which ne'er unfolds its beauties rare,
But in the silent shade.

We know there's sunshine in thy soul,
And goodness in thy heart ;
Thou never can'st conceal the whole,—
Then wherefore hide a part ?



Ethel.

SIGNIFICATION . . The Noble.

EMBLEM Tall Sun Flower.

SENTIMENT Lofty and pure Thoughts.

“HEAVEN! ’t is delight to see how fair
Is she, my gentle love!
To serve her is my only care,
For all her bondage prove.
Who could be weary of her sight?
Each day new beauties spring;
Just Heaven! who made her fair and bright,
Inspire me while I sing.

“In any land where’er the sea
Bathes some delicious shore,
Where’er the sweetest clime may be
The south wind wander’s o’er,
’T is but an idle dream to say
With her may aught compare;
The world no treasure can display,
So precious and so fair.”

CHARLES D. ORLEANS. Written in 1391.

Enuice.

SIGNIFICATION . . Good Victory.

EMBLEM Bay.

SENTIMENT Reward of Merit.

OFt though sorrow's storm beat o'er thee,
Still thy heart has braved the blast;
While the goal was yet before thee,
All thy thoughts were onward cast.

And with faithful, stern endeavor,
Thou hast served the cause of right;
And with all thy moral power,
Thou hast fought the faithful fight.

Now has victory crowned thy merit,
And thy foes no more beset;
All temptations thou hast conquered,
And secured thy coronet.



En. Evelyn.

SIGNIFICATION . . Living and Enlivening.

EMBLEM Coreopsis.

SENTIMENT Always cheerful.

ALWAYS cheerful, always true,
Enlivening as the Summer dew ;
Thy daily duties all well done,
Thy course is onward, like the Sun.
Like him, thou shed 'est thy joyous beams
On all around when dark it seems,
And to the face of care and pain
Thou bring'st the light of hope again ;
From thee the clouds of sorrow flee,
And grateful smiles come back to thee.
Oh ! may'st thou never, never part,
With thy enlivening, cheerful heart.



Fanny. Frances.

SIGNIFICATION . . Frankness.

EMBLEM Single White Pink.

SENTIMENT Stranger to Art.

I'm weary of your flattering words,
And never wish to hear
Again those silly compliments,
You've poured into my ear.

I've often told you in plain terms,
Love you, I never could ;
If such a thing were possible,—
I'm sure I never would !

You look at me with much surprise,
That I should thus dare speak, —
You think I ought to bear with you,
Like ancient Moses meek. §

Had you not loved yourself so much,
And me a little more,
You might have won my heart perhaps,
A long, long time before.

So let me now a lesson teach,
Which you may need again;
And when you've learned it well yourself,
Teach self-conceited men:

That girls are not in love with them,
As men oft think they are;
But are only laughing quietly
At their self-conceited air.

Think not, I pray you, that we girls,
Give our true love unsought;
We are willing to exchange it well,—
But hearts can ne'er be bought.



Fidelix.

SIGNIFICATION . . . Fidelity.

EMBLEM Wall Flower.

SENTIMENT Fidelity in misfortune.

'T is not in prosperity's dazzling light,
That we can know false friends from true;
But in a dark and cloudy night
We find the faithful ones but few.

Those few! how precious is their love!
How welcome all their quiet aid!
How sweet to us 't is then to prove,
That friendship's flowers will never fade.

The tender heart, the ready hand,
Will do our bidding like our own;
And only wait the eye's command,
Without one word, or e'en one tone.

How blest such friendship none can know,
Who have not been by sorrow tried;
Through darkest storms of deepest woe,
Such friends with us the blasts abide.

And when the hour of death shall come,
Steadfast they'll watch around our bed;
And when we've passed beyond the bourne,
They'll long lament the spirit fled.

Flora.

SIGNIFICATION . . Goddess of Flowers.

EMBLEM Rose Geranium.

SENTIMENT Many are lovely, but you exceed all.

EXCEEDING beautiful thou art ;
Hast thou a pure and truthful heart ?
Lovely indeed thy form and face ;
Has holy love in thy heart a place ?

Thou now dost reign Queen of the Flowers ;
Thy days are spent in floral bowers ;
But life's Spring-time will soon be past,
And Summer, Autumn, fly, too fast.

Winter will come with frost and snow ;
Storms will arise and rude winds blow ;
Ah ! what shall shield thee from the blast ;
Hast thou the beauty which e'er will last ?

Beauty there is, which no storm can blight ;
It will bloom undimmed through winter's night.
Then guard thou well thy heart's sweet flowers,
Till they bloom again in heavenly bowers.

Florence.

SIGNIFICATION . . . Flourishing.

EMBLEM Buttercup.

SENTIMENT Riches.

Is she rich? said the spendthrift to his quiet friend;
I wish to marry, my fortune to mend;
I know of none richer, the friend replied,
And advise you to win both fortune and bride.

Then went the same friend to Florence and told,
He should send her a suitor, ugly and old,
To win the heart, which he hoped was his own,
So she might give the dandy her fortune alone.

My fortune! what mean you? you very well know,
I have not a dollar on earth to bestow;—
He asked for your riches; his question so bold,
I answered,—“none richer;”—did not say in gold.

The riches I prize above gold and gems,
You freely possess; pray let me name them:
Modesty, gentleness, frankness and truth;
Such riches all may possess in their youth.

Georgette.

SIGNIFICATION . . . Love of Rural Life.

EMBLEM Tulip Tree.

SENTIMENT Rural Life favorable to Virtue.

NOT in the city's crowd,
Would I expend the precious hours of time ;
There, busy hum of noisy voices chime
In accents stern and loud.

To lowly cottage hearth
Would I retire from noise, and pomp, and strife,
And in the calm of sweet domestic life,
Live far from noisy mirth.

There, hum of busy bee,
And merry song of birds, at morning call
Would wake me at the dawn, to join with all
In the great jubilee.

There, flowers their petals spread
To greet the rising of the King of Day ;
And fragrant dews, that tremble on the spray,
Sweet odors shed.

Then to the silent dell
I'd hie me at the burning noontide hour,
And in some shady grove, or sylvan bower
Would all sad thoughts dispel.

And when the lovely eve
 With silent footsteps should come stealing on,
 I'd watch the stars come peeping one by one,
 And sweetest fancies weave.



Geraldine.

SIGNIFICATION . . . Perfect good will.

EMBLEM Sweet scented Tussilage.

SENTIMENT Justice shall be done you.

THE humble floweret of the vale,
 Whose fragrant breath perfumes the gale,
 Is often passed unheeded by,
 While gaudier flowers attract the eye,
 And varied dyes, and colors bright,
 Are sought and cherished with delight.

Thus with our humble Geraldine,
 Few know her moral worth, I ween ;
 Amidst home scenes her virtues shine,
 And serve to brighten and refine ;
 No showy flower is Geraldine,—
 Of modest ones, she reigns a queen.

Gertrude.

SIGNIFICATION . . True to her Trust.

EMBLEM Sage.

SENTIMENT Woman's province is Home.

TRUE to her trust,— what higher praise

Can any woman ask ?

In usefulness to pass her days,

Fulfilling every task ;

And every duty faithfully,

Assigned her by the Lord,

Important is the trust she has,

And rich is her reward.

A daughter's trust,— to that be true ;

Make thy parents' pathway bright ;

A sister's trust is given you,—

Guide that tempted brother right.

Another trust, and a higher one,

Is found in the fond word, Wife ;

True to this trust, let your motto be,

For it ceases but with life.

A mother's trust ! what heart can know

The power these words contain,

To cause the rills of joy to flow,

Or ope the source of pain.

A mother's trust! Oh, guard it well,
 And faithful to it prove;
 Eternity alone can tell
 What's wrought by a mother's love.

GRACE.

SIGNIFICATION . . . Good Will.
 EMBLEM Mezerion.
 SENTIMENT Desire to Please.

SEEK happiness, child, in life's sunny hours,
 By culling for others life's beautiful flowers;
 And the smiles they shall bear to the lowliest place,
 Reflected shall beam on their own bonny face.
 That youth would be happy to send a bouquet,
 To tell to his lady what he wishes to say,
 And thus the delight he thinks to impart,
 With hopes, fresh and sweet, shall return to his heart.
 Bring flowers to gladden the sick one's room
 With their angel smiles and their rich perfume;
 They will speak to the weary of brighter hours,
 And of Him who has mingled life's thorns with flowers.
 The gentle bride to the altar is led,
 With fragrant blossoms is her pathway spread,
 And when loved ones are laid on their lowly biers,
 We scatter for them the flowers and the tears.

Thy friendship, sweet Grace, is like to the flowers ;
 It comes to our hearts in our saddest hours ;
 And thy hearty good will and desire to please,
 Are like music's soft notes on the Summer's breeze.

KINDLY.

SIGNIFICATION . . Merciful.

EMBLEM Grape.

SENTIMENT Charity.

A KINDLY word, a pleasant smile,
 For those who 've gone astray,
 May often lead them back again
 Into the narrow way.

What if they long have sadly erred ?
 They long have sorrowed too ;
 Oh let them hear a gentle word,
 When e'er they meet with you.

We know not how the tempter's arts
 May all our power assail ;
 And though we may a time stand firm,
 They may at length prevail.

Speak gently, kindly, to the poor,
 For they have much to bear ;
 And seek to smooth their rugged way
 With sympathy sincere.

And help to make the burden light
So heavy on them laid ;
Such lowly acts of charity
In Heaven shall be repaid.

The mourner and the invalid
Need words of friendly cheer ;
And there's a balm we all may give,—
The sympathetic tear.

Oh, cherish gentle charity,
Within thy inmost soul.
It adds to every other charm,
And beautifies the whole.



Harriett.

SIGNIFICATION . . Rich Lady.

EMBLEM Sumach.

SENTIMENT . . . Wealth cannot purchase Love.

I SAW a fair maiden, the daughter of wealth,
And bright was the beauty all glowing with health ;
Her fair face was shaded by light golden curls,
Where mingled in splendor rich diamonds and pearls.

And nought was there wanting that wealth could supply,
To bring joy to her heart or gladden her eye ;
All obsequious her servants awaited her word,
And music's soft strains through her chambers were
heard.

I saw her again at the sweet twilight hour ;
She had wandered away to Nature's own bower ;
Rich circles of jewels lay low at her feet,
And the language she breathed, came plaintive and
sweet.

Away with the trappings of wealth and of art !
They may dazzle the mind, but they soothe not the
heart.

I would give all my wealth,— every diamond and pearl,
For the free, happy heart, of a cottage girl.

A.

Helen.

SIGNIFICATION . . . Radiantly Beautiful.

EMBLEM Ranunculus.

SENTIMENT You are radiant with charms.

“TELL me thou ancient mariner
That sailest on the sea,
If ship or sail or evening star,
Be half so fair as she ?

“Tell me thou gallant cavalier,
Whose shining arms I see ;
If steed or sword or battle-field,
Be half so fair as she ?

“Tell me thou swain that guard’st thy flock
Beneath the shadowy tree,
If flock, or vale, or mountain ridge,
Be half so fair as she ?”

From the Spanish.



Henrietta.

SIGNIFICATION . . . Richness.

EMBLEM Maize.

SENTIMENT Plenty.

WHERE'ER thou rovest, gentle girl,
Where'er thy home is found,
There plenty is with smiling face,
And gladdens all around.

Thus through each changing scene of life,
Rich blessings crown thee still;—
Thus Heavenly goodness ever doth
Thy Horn of Plenty fill.

And while with so much earthly good
Thy eup is running o'er,
Thy heart does e'en with pity move,
To aid the suffering poor.

Nor unto thee doth ever turn
The child of want and pain,
And humbly seek some needed good,
And seek of thee in vain.

Go on, dear girl, thus to improve
The blessings God has given;
Go on, and thou wilt surely find
Thy rich reward in Heaven.

N. S. T.

Hesibah.

SIGNIFICATION . . My delight is in her.

EMBLEM Spindle Tree.

SENTIMENT . . . Your image is engraven on my heart.

THOU art enshrined within my heart;
And at this twilight hour,
Thou knowest not how near thou art,
By mem'ry's magie power.

I watch the gentle stars come out
From yon clear azure skies,
And think I nought like them have seen,
Except thy sparkling eyes.

I almost hear thy low sweet tones
Breathing into my ear,
Some whispered thought or sentiment,
Which I so love to hear.



Iuliah.

SIGNIFICATION . . The World.

EMBLEM Thorn Apple.

SENTIMENT Deceitful Charms.

WE know there's much that's false,
In this bad world of ours;
And oft we find our hopes
As transient as the flowers.

The rose that blooms to-day,
Will e'en to-morrow die;
And joys we thought to meet,
But tantalize and fly.

We know that auburn hair
May sometime prove false curls;
And ah, I grieve to say,
We sometimes find false girls!



Junke.

SIGNIFICATION . . . Beautiful Flower.

EMBLEM Hibiscus.

SENTIMENT Beauty is vain.

BEAUTY blooms like the fragile flower,
Opens at morn, fades in an hour ;
Delicate tints and graceful form,
Shield it not from blast or storm.

Health will fail, and disease and pain,
Teach the fair, that "Beauty is vain,"
Chilling winds with poisonous breath
Blow, and the form lies low in death.

Then let our hearts such beauty prize,
As best shall fit us for the skies ;
There where unfading flowers grow,
No blasting winds will ever blow.



Irene.

SIGNIFICATION . . . A Watcher.

EMBLEM Thyme.

SENTIMENT Activity.

Aye, watch for thy heart, thy pure young heart ;
Watch well for thy heart, Irene !
For many a maid, as wise and staid,
Has been robbed of her heart I ween.
But in vain she may weep in anguish deep,
It well never return again.

Then watch with care, thy heart, my fair,
Look well to thy heart, Irene !
There 's a little sprite with wings of light,
That 's fanning thy heart, unseen.
Beware of the art that would steal thy heart,
For 't would never return again.

ANON.



June. JUNE.

SIGNIFICATION . . . Grace of God.

EMBLEM Cherry Blossom.

SENTIMENT Spiritual Beauty.

MAY God's mercy ever guard thee
Safe o'er all thy thorny road ;
And His grace, what e'er betide thee,
Lead thee home to His abode.

May thy footsteps never wander,
Never from the truth decline ;
Till thine earthly days are numbered,
Then He'll say, thou now art mine.

Then in realms of light and glory,
Thou shalt dwell with Him above ;
And repeat the pleasing story
Of His deep, unchanging love.



Jenny.

SIGNIFICATION . . . Song Bird.

EMBLEM Agrimony.

SENTIMENT Thankfulness.

SING, Jenny, sing while thy heart is gay,
Aye, sing in thy innocent gladness,
Thy beauty and youth will pass away,—
Thy spirit be shrouded in sadness.

Sing, Jenny, sing while thy heart is young,
A song for the aged and weary,
A soothing strain that shall cheer again
The way of the aged so dreary.

Sing, Jenny, sing in the sick one's room,
A lay all gently breathing,
Of patience and hope for the weary one,
With faith and prayer enwreathing.

ANON.



Jemima.

SIGNIFICATION . . Handsome as the Day.

EMBLEM China Rose.

SENTIMENT Beauty ever new.

MORNING is peeping over the hills,
Laughing and babbling are the young rills,
Seemingly joyous once more to awake
Flowers on the banks, and their fragrance partake;
Birdlings are sending from their little throats,
Morning's sweet praises in silvery notes.
Brightly the dew-drops are spangling the earth,
All Nature's awaking with laughter and mirth.

Majestically rides the sun through the sky,
Boundlessly sending his beams from on high,
Silently, steadily approaching the west,
Quietly sinks in the rich clouds to rest.
Jemima is as beautiful, we fully believe,
As the glorious dawn, and the soul-soothing eve.



Josephine.

SIGNIFICATION . . . Jasper.
EMBLEM Hornbeam.
SENTIMENT Ornament.

BRIGHT precious stones adorn the fair,
And on the brow of beauty shine ;
More precious far to Josephine,
Are "the jewels of the mind."

Had she old ocean's richest gems,
Most lustrous diamonds she might find ;
Still all more worthy of her heart,
Are the virtues of the mind.

The virtues which her life inspire
Are holy, peaceful, and refined ;
Richer far than gems or gold,
Are "the jewels of the mind."

Fortune on Josephine may smile,
With rich gems her brow may bind ;
Still we know more dear to her,
Are "the jewels of the mind."

Julia.

SIGNIFICATION . . . Curly-haired.

EMBLEM Burgundy Rose.

SENTIMENT Simplicity and Beauty.

THE sunlight is dancing
Among thy bright curls;
Thy charms are entrancing,
Thou fairest of girls!
Thine eye like the starlight,
Thy cheek like the rose,
Thy lips, O how lovely
In smiles or repose.

It is not the beauty
That beams from thine eyes,
Nor thy bright fairy form,
That so highly I prize;
Though we will not deny
That the casket is fair;—
The gem it contains
Is more precious and rare.

Keziah.

SIGNIFICATION . . . An Angel.

EMBLEM Snow Ball.

SENTIMENT Thoughts of Heaven.

EARTHLY angels there may be,
We think when we Keziah see ;
For with her she doth ever bring
"Sweet waters from affection's spring."

Some the laurel wreath may wear ;
For this Keziah does not care ;
She is happier, for she tries
To make her home a paradise.

Her voice doth to her husband's heart
A calm, a Heavenly joy impart ;
And to her children, every tone
Is sweet, is gentle love alone.

To friends her sympathy and aid
Is kindly proffered,— not delayed ;
In sickness she's at hand to cheer,—
'T is then we feel—an angel's near.

G A R L A N D.

SIGNIFICATION . . . Crowned with Laurels.

EMBLEM A Garland.

SENTIMENT Reward of Virtue.

A GARLAND fair we twine for thee
Of sweet and fadeless flowers ;
Of such as shall forever be
Bright in the darkest hours.

Here are the loveliest flowers of youth,
Humility, and meakness ;
And blossoms fair of love and truth,
Are sending forth their sweetness.

May no blight come o'er this wreath,
Which now thy brow is shading ;
Guard it with care, for life is brief,—
'T will then remain unfading.



Louisa. Louise.

SIGNIFICATION . . Surpassing.

EMBLEM Mignonette.

SENTIMENT Worth and Loveliness.

In loveliness and moral worth,
None can surpass Louise on earth;
None like to her, whom I've seen yet;
She's like the fragrant Mignonette.

This humble floweret is passed by;
Its modest charms tempt not the eye;
But when with Heaven's dew 'tis wet,
How sweet the lowly Mignonette.

Where'er this tiny flower doth bloom,
The air is filled with its perfume,
And thus to me an emblem is
Of modest worth and loveliness.

But when you ask me to compare
Louise, to something sweet and fair,
Nothing that I have ever met
Is like, but lovely Mignonette.

Lucille. Lucy.

SIGNIFICATION . . . Light.

EMBLEM Cape Jasmine.

SENTIMENT My heart is joyful.

LIGHT be thy dreams, sweet Lucy,
When sleep thine eyelids close;
That night may prove refreshing
To thee, as to the rose.

Then wake in bloom and beauty,
With spirits light and gay,
And in the path of duty,
Joyfully pass the day.

No clouds come o'er thy sunshine,
No sorrow o'er thy heart,
While thou art on life's busy stage,
Performing well thy part.

Light be thy cares, sweet Lucy,
Along life's devious way,
And Heaven's pure light shine o'er thee,
To lead to endless day.

Lydia.

SIGNIFICATION . . . Sorrowful.
EMBLEM Dead Leaves.
SENTIMENT Sadness.

I SAW a sere and trembling leaf
Clinging to its parent tree ;
Full well it knew its hours were brief,
And thus it spake to me : —

I once was fresh, and green, and bright,
And much admired was I ;
But now condemned to death's dark blight,
Must fall to earth and die.

I do not like to lay me there,
Upon the cold damp earth ;
But I would rise on wings of air
As if of Heavenly birth.

My little life has not been vain,
As many mortals are ;
They spend their days in grief and pain,
Then perish in despair.

My God gave me a work to do,
Which faithfully I've done ;
Have beautified my parent tree,
And shielded from the sun —

Him who has sought a cooling shade
 To rest his wearied frame ;
 And although now I am decayed,
 There 's good linked with my name.

Then mortal ! learn this lesson pure,
 For coming is the night ;
 Would you a happy age ensure,
 Inspire your talents right.

A n n e l.

SIGNIFICATION . . . Lovely or Amiable.

EMBLEM White Jasmine.

SENTIMENT Amiability.

LOVELY art thou, gentle maiden !
 Thy warm heart with pure love laden,
 Expands and folds in its embrace
 Good will to all the human race ;
 Like a sunbeam, ever glancing,
 O'er our way, our joys enhancing.

Lovely art thou, gentle maiden,
 Like the bee with honey laden,
 Is thy heart with all that's holy,
 Shutting out dark melancholy ;—
 A rainbow on the clouds of even
 Sweetly teaching trust in Heaven.

Mahala.

SIGNIFICATION . . Infirmity.
EMBLEM Carolina Syringe.
SENTIMENT Disappointment.

 T is not well
To let thy spirit brood,
Thus darkly o'er the cares that swell
 Life's current to a flood.
As brooks, and torrents, rivers, all
Increase the gulf in which they fall ;
Such thoughts by gathering up the rills
Of lesser griefs, spread real ills ;
And with their gloomy shades conceal
The land-marks Hope would else reveal.

Mrs. DINNIES.



MURCIA.

SIGNIFICATION . . Polite.

EMBLEM Geranium.

SENTIMENT Gentility.

TRUE politeness is the expression of kind feelings which spring from out the fountain of a pure heart. The quiet gracefulness of those bred in fashion's circles, is termed gentility. Where true kindness, and graceful manners meet in the same person, there we find true Christian courtesy, such as Paul oft taught; but which is sadly wanting in the young and thoughtless of modern days, — who rise not up before the hoary head, neither treat with reverence the venerable form of age.

Genteel one may be; — polite, one cannot, without a pure heart overflowing with love and Christian sympathy for all mankind.



Margaret.

SIGNIFICATION . . . A Pearl.
EMBLEM Orange Flowers.
SENTIMENT Woman's Worth.

ALL gold, and pearls, and precious gems,
Shun the broad light of day ;
So, woman's love, more precious still,
Is hid from sight away.

We must dive deep in ocean's bed,
For pearls for fashion's shrine ;
We must dig low for richest gems
Which glitter in the mine.

So woman's love within the heart,
Is richest, deepest found ;
'T is like the still broad flowing stream,
Enriching all around.

Woman's true worth no man can know,
Who loves not long and well ;
He knows not half the low, rich tone,
Which into music swell,—

Whene'er the chords of her soul's harp
Are waked by skillful hand ;
Ah! then the song of love he'll hear,
Is taught by seraph band !

Marrin.

SIGNIFICATION . . Full of grace.

EMBLEM Multiflora Rose.

SENTIMENT Many charms.

I DO not like to tell thee
 How beautiful thou art;
 And yet thou seem'st unconscious
 Of winning every heart.

Thy light and fairy figure,—
 Thy graceful step so free;—
 Fleecy cloudlets, o'er the sky,
 Move airily like thee.

In all this grace of motion,
 And loveliness of face,
 Thy heart's gentleness and truth
 We clearly, plainly trace.

Thou to thy friends art faithful,—
 Forgiving to thy foes;
 Thy life well spent presaging
 A peaceful, happy close.

Martha.

SIGNIFICATION . . . Becoming bitter.

EMBLEM Citron.

SENTIMENT . . . Beautiful, but ill-humored

WHAT care I for your handsome face,
Where rose and lily blend?
When nothing in your heart or mind,
I could or would commend.

I like to look on beauty well
Of figure and of face;
But I love that beauty better,
Which in good deeds I trace.

There's many a gaudy flower,
At first attracts the sight;
But when we find no fragrance there,
It gives us less delight.

Your beauty is a gaudy show;
'Tis like the scentless flower;
And when you let ill-temper reign,
We feel its bitter power.

Mary.

SIGNIFICATION . . . Exalted.

EMBLEM Apple Blossom.

SENTIMENT Fame speaks you great and good.

MARY is sounding in our ears,
 From palace, and from cot ;
 What place of high or low degree,
 Where this loved name is not ?

We read it oft in Sacred Writ ;
 This, poets most admire ;
 We see it oft on Hist'ry's page,—
 No name's exalted higher.

In youth we love to hear the sound
 Of this sweet, simple name ;
 In age we love it as of yore ;
 It brings us back again :—

It brings the long, bright, summer days,
 When we in sportive mood,
 Chased humming-bird and butterfly,
 And wandered in the wood,—

In search of childhood's gay delight,
 The many-colored flowers,—
 With blue-eyed Mary by our side,
 We spent those sunny hours.

The rose is still as beautiful
 As when first it met our eyes;
 We love the gleaming of the stars,—
 They've been ages in the skies.
 So Mary's name, we love it still,
 In palace or in cot;
 It makes our very heart-strings thrill!
 Who is there loves it not?

Maria.

SIGNIFICATION . . . A Name.

EMBLEM Rosemary

SENTIMENT Keep this for my sake. I'll
 remember thee.

THINE own loved name! nought can impart
 More thrilling joy to my faithful heart;
 For with thy name, my thoughts will blend,
 Thy image, and thy love, my friend.

Thine own loved name! I'll keep it well
 To guard my heart — a gentle spell,—
 Waking the thoughts that are holy and pure,
 Teaching to shun, where sin would allure.

'T is sweet to think, tho' unknown to fame,
 One heart will cherish my humble name;
 It asks but a place, a little part,
 In the deep recess of thy loving heart.

Melissa.

SIGNIFICATION . . . A Bee, or sweetness

EMBLEM Tuberose.

SENTIMENT I have seen a lovely girl.

IN a little calm retreat,
 Blooms a floweret pale and sweet ;
 Retiring modesty hath spread,
 A charm around her youthful head,
 While the sunshine of her heart,
 Doth to all a charm impart.

Hast thou seen the Tuberose ?
 As sweet a flower as ever blows ?
 Thou hast then an emblem seen
 Of our "lovely girl" I ween,
 Melissa in her garden bowers
 Is like "a Bee" mid summer flowers.



Mildred.

SIGNIFICATION . . . Mild in Counsel.

EMBLEM Mallows.

SENTIMENT Sweet Disposition.

MILD light shines in thine eye,
Meek thoughts are in thy heart,
Kind words are on thy lips,
Pride has in thee no part.

Truth is thy constant guide,
Hope is by thee possessed,
Love sheds on thee its light,
Peace fills thy gentle breast.

Genius has stamped thy brow,
Health blooms upon thy cheek ;
Blessings rest on thy head,—
For "Blessed are the meek."



Minerva.

SIGNIFICATION . . Wise, Stern.

EMBLEM Thistle.

SENTIMENT Austerity.

WISDOM rare and precious thou hast, Minerva,
Thy mind unused to trifling things of earth,
Fill'd with thoughts pure, high, and lofty,
Seeks and retains, above the common crowd,
Its elevation.

Stern, many call thee ;
Sternness of heart it is not ; study deep
Has made thee thoughtful, and that majesty
Of soul, so calm and lofty, is only
The deep, broad, silently-flowing current
Of thought, which speaks a soul superior
To the heartless praise, and selfish vanity
Of the thoughtless, mirthful, trifling throng.



Minna. Minnie.

SIGNIFICATION . . One rich in love.

EMBLEM Myrtle.

SENTIMENT Love.

How have I loved thee! O recall
Those past delicious hours,
Which made me happy as a bird,
In its sweet home of flowers.

And thou wast all my happiness,
My love,—my joy,—my pride!
Thou know'st I had no other joy,
And none to love beside.

Then plighted we our mutual troth,
That it might never change,
Through all the cares and ills of earth
That other hearts estrange.

MILLER.



Miranda.

SIGNIFICATION . . . One to be admired.

EMBLEM Field Convolvulus.

SENTIMENT Captivation.

“ADMIRER Miranda!

Indeed the top of admiration; worth
What's dearest to the world! Full many a lady
I have eyed with best regard, and many a time
The harmony of their tongues hath into bondage
Brought my too diligent ear; for several virtues
Have I liked several women; never any
With so full soul, but some defect in her
Did quarrel with the noblest grace she owned,
And put it to the foil. But you, oh! you
So perfect and so peerless, are created
Of every creature's best.”

SHAKSPEARE.



Miriam.

SIGNIFICATION . . Bitterness of Affliction.

EMBLEM Weeping-Willow.

SENTIMENT Ask not one to join in mirth, whose
heart is desolate.

THEY have borne her away to her last long home,
Laid her head on her last cold pillow ;
Let us strew o'er her grave the flowers that she loved,
Let us plant at her head-stone the willow.

The sad weeping-willow, let it droop o'er the bed,
Where lowly she rests in her childhood ;
Let us strew o'er her grave the flowers that she loved,
The sweets of the garden and wild-wood.

Aye, mourn for thy dead, thy early dead,
But still with a chastened sorrow ;
For though long be the night, and dark be the grave,
Faith points to a glorious morrow.

A.



Myra.

SIGNIFICATION . . . Sadness.

EMBLEM Cypress.

SENTIMENT Disappointed hopes.

AWAY! away with sadness,
 While time is on the wing;
 Let innocence and gladness,
 And joy from all hearts spring.

Nature, in bloom and beauty,
 Says, sigh not thy time away;
 Faithfully do thy duty,
 And cheerfully spend the day.

Be sad no longer, Myra!
 But trust in Him above,
 Who will ever guard thy footsteps,
 And guide thee with His love.



Naomi.

SIGNIFICATION . . . Consolation.
EMBLEM Scarlet Geranium.
SENTIMENT Consolation.

“ WE mourn for those who sin,
Bound in the tempter's snare,
Whom syren pleasures beckons in,
To prisons of despair ;
Whose hearts by whirlwind passions torn,
Are wrecked on folly's shore,—
But why in sorrow should we mourn
For those who sin no more ?

“ We mourn for those who weep,
When stern afflictions bend
With anguish o'er the lowly sleep
Of lover or of friend ;—
But they to whom the sway
Of pain and grief is o'er,
Whose tears our God hath wiped away,
Oh ! mourn for them no more.”

MRS. SIGOURNEY.

Nancy.

SIGNIFICATION .. Gracious, Merciful.

EMBLEM Elder.

SENTIMENT Compassion.

Oh let me dry the sad, sad tears,
Which from thine eyes o'erflow,
And strive by earnest, kindly deeds,
To help thee bear thy woe.

By sweet, consoling, friendly words,
I'd cheer thy care-worn heart;
For sympathy, if rightly given,
Can happiness impart.

But when thy bleeding heart shall find
All human aid but vain,
Know that the hand that gave the wound,
Can make it well again.



Octavia.

SIGNIFICATION . . The Eighth.

EMBLEM Virgin's Bower.

SENTIMENT . . . Filial love.

“YES I have left the golden shore,
Where childhood midst the roses played;
Those sunny dreams will come no more,
That youth a long bright sabbath made.

“Yet while those dreams of memory's eye
Arise in many glittering train,
My soul goes back to infancy,
And hears my mother's song again!

“And while my soul retains the power
To think upon each faded year,
In every bright or shadowed bower,
My heart shall hold my mother dear.”

W. G. CLARK.



Olive.

SIGNIFICATION . . . Peace.

EMBLEM Olive.

SENTIMENT Peace.

WHERE is peace? can 'st tell, can 'st tell?
Does she with the miser dwell?
As he hoards his glittering wealth,
At expense of ease and health?

Loves she Glory's wreath to twine,
Kneeling at Ambition's shrine?
Or in gay and festive hall
Waits she Pleasure's siren call?

Seek her not 'mid pomp and power!
Seek her not in pleasure's bower!
In the miser's darkened cell,
Peace, sweet peace, can never dwell.

Far from pomp and noise and mirth,
At the dear domestic hearth,
Where the humble kneel in prayer,
Peace, sweet peace, is ever there.

Far above these lower skies,
Where no tears bedim the eyes,
Where all holy spirits are,
Peace, celestial peace, is there!

Yes, in those bright realms above,
Realms of purity and love,
There is peace, divinely fair; —
Happy they who find her there.

ANON.



Paulina.

SIGNIFICATION . . . Little.

EMBLEM Thyme.

SENTIMENT Less lovely than some, but more estimable.

TIME can never mar thy beauty,
For 't is not of outward form ;
'Tis the loveliness of spirit,
And of heart so pure and warm.
On such Old Time lays not his hand,
It blooms as fresh in a better land.

None but those who love thee best,
Can half thy goodness know,
The virtues sweet which in thee dwell,
And in thy bosom glow ;
They may unlock those secret cells,
Who've known thee long, and loved thee well.



Permelia.

SIGNIFICATION . . . A True Friend.
EMBLEM Forget-me-not.
SENTIMENT True Love

THIS nosegay fair, by yonder riv'let's side,
All fresh with dew, I gathered for my bride ;
O, let these simple flowers their language tell,
And breathe for you a kind, a sad, farewell !

The sweet forget-me-not, the hyacinth blue,
Remind of love that's constant, faithful, true ;
The myrtle with the amaranth I'd twine,
And thus, thee ever in my heart enshrine.

N. S. T.



PERIS.

SIGNIFICATION . . . Estrangement.

EMBLEM Cornus.

SENTIMENT A changed heart.

WHAT have I done to merit this ?

Why are thy looks so changed ?

I feel no sorrow more than this,—

An early friend estranged.

What have I done ? what have I said,

That you now turn from me ?

I always, sure, have faithful been —

A sincere friend to thee.

Come back, come back again, my friend,

I will forgive the past ;

This is thy first unfriendly look,—

Oh, let it be thy last.



Phœbe.

SIGNIFICATION . . . Shining.

EMBLEM Plane Tree.

SENTIMENT Genius.

WHAT is genius ? — a meteor's glare,
Which bursts upon our sight ;
And oft it lures its victims on,
To shades of darkest night.

It shines a moment — then is gone !
We watch to see it more ;
But heavy clouds obscure its light,—
That light we much deplore.

'T is not the brightest orbs of light,
Which shine with purest ray ;
But those which steadiest show the path
Which leads to endless day.



Prudence.

SIGNIFICATION . . . Prudent.

EMBLEM Service Tree.

SENTIMENT Prudence.

"HER reason all her passions sway ;
 Easy in company, in private gay ;
 Coy to a fop, to the deserving free,
 Still constant to herself, and just to me.
 A soul she has for great actions fit,
 Prudence and wisdom to direct her wit ;
 Courage to look bold danger in the face,
 No fear but only to be proud or base.
 Quick to advise, by emergence prest,
 To take good counsel or to take the best.
 The expression of her thoughts are such,
 She does not seem reserved, nor talk too much.
 That shows a want of judgment and of sense,
 More than enough is but impertinence.
 Her conduct regular, her mirth refined,
 Civil to strangers, to her neighbors kind.
 Averse to vanity, revenge, and pride,
 To all the methods of deceit untry'd ;
 So faithful to her friends, and good to all,
 No censure upon her actions fall."

Written in 1699.

POMFRET.

Rachel.

SIGNIFICATION . . . A Sheep.

EMBLEM Daisy.

SENTIMENT Innocence.

THIS lovely flower an emblem is
Of innocence and cheerfulness ;
It early comes to glad our sight,
And fill our hearts with sweet delight.

We love to see it in the Spring,
Its tiny buds fast blossoming ;
We love it too in Summer's hours,
More lasting than some gayer flowers.

We love it much when Autumn's breath
Comes to lay low sweet flowers in death ;
For then it looks as fair and bright,
As if just waked to life and light.

No clouds or storms it seems to fear,
But smiles through all without a tear ;
Innocent Daisy ! teach thou us
Through clouds and storms in God to trust.

Rebecca.

SIGNIFICATION . . . Reconciliation.

EMBLEM Star of Bethlehem.

SENTIMENT Reconciliation.

My friend, my much loved friend!
Thanks to thy generous heart!
Thou hast in kindness ever strove
To act a sister's part.

And now, when least I could expect
Thy sympathy to share,
A fresh memento here I find
Of ever faithful care.

E'en when I most deserved a frown,
Thou hast in mercy smiled,—
My heart then felt a sudden joy,
For thou wert reconciled.

N. S. T.

Rosa.

SIGNIFICATION . . . A Rose.

EMBLEM Red Rose.

SENTIMENT Beauty and Prosperity.

NOUGHT we find in garden bowers,
Like the Rose,—the Queen of Flowers ;
Its beauty and its fragrance sweet,
Shows loveliness pure and complete.

Its bud is beautiful at first,
More lovely still when forth it bursts ;
We see pure, glorious beauty there,
Its fragrance sweet, fills all the air.

But soon, alas ! the rose decays,—
It droops its head, and fades away ;
Yet with us leaves its fragrance still,
Forth from its petals sweets distill.

ROSE.

SIGNIFICATION . . . Charming Rose.

EMBLEM Musk Rose.

SENTIMENT Charming.

How oft some lovely maiden fair,
Here for a time will bright appear,
Then fade away like a withered rose,
And gently sink to calm repose.

But all her goodness still remains,
Affection true her worth retains ;
And though she now has gone to rest,
The friends she loved are by her blest.

As ever withered roses shed
A fragrance when their bloom is fled,
So her past loveliness imparts
Its fragrance sweet, to mourning hearts.



Rosmond.

SIGNIFICATION . . . Rose of the World.

EMBLEM Red Rose-bud.

SENTIMENT Pure and Lovely.

“O’ER the porch there grew an Eastern rose,
 That flowering high, the last night’s gale had caught,
 And blown across the walk. One arm aloft
 Gown’d in pure white, that fitted to the shape,—
 Holding the bush to fix it back she stood,
 A single stream of all her soft brown hair
 Pour’d on one side; the shadow of the flowers
 Stole all the golden gloss, and, wavering
 Lovingly lower, trembled on her waist —
 Ah, happy shade — and still went wavering down,
 But, ere it touched a foot, that might have danced
 The greensward into greener circles, dipt,
 And mixed with shadows of the common ground!
 But the full day dwelt on her brows, and sunn’d
 Her violet eyes, and all her Hebe-bloom,
 And doubled his own warmth against her lips,
 And on the bounteous wave of such a breast
 As never pencil drew. Half light, half shade
 She stood, a sight to make an old man, young!”

Rosella.

SIGNIFICATION . . . Brave Rose.

EMBLEM Hundred-leaved Rose.

SENTIMENT Dignity of mind.

JUST by a shady grove,
 All hid from passers by,
 A rose-bush blossoms there,
 Beneath the summer sky.
 One morn a beauteous bud,
 The fairest I had seen,
 Burst from its velvet folds,
 Amid the tender green.

With wonder and delight,
 I stood awhile to gaze,—
 Its beauty filled my soul
 With gratitude and praise.
 I left it there to charm
 Perchance some other eye ;
 To beautify 'its parent tree,
 And then to fade and die.

Fair Rose! this opening bud
 An emblem is of thee ;
 Thy useful life so pure,
 Thy heart from guile so free ;

And like this bud, thou bloomest
Where idle throngs ne'er come ;
One spot thou ever cheerest,
That spot thy happy home.

Thy beauty too must fade
As fades this rose, we know ;—
The dearest, loveliest ones,
Are always first to go.
The gentle deeds of love
Can never, never die ;
Such beauty brighter grows
And blooms beyond the sky.

N. S. T.



B O W E N A .

SIGNIFICATION . . . To acquire Peace.

EMBLEM Flowering Reeds.

SENTIMENT Confidence in Heaven.

Oh, where shall Peace be found,—
Peace for the troubled breast?
Dwells it this side the bourne,
Where “the weary are at rest?”

Oh, where may Peace be found?
In cities’ busy mart?
In fashion’s ceaseless round,—
Sweet Peace, is’t there thou art?

Dost dwell in shady wood,
Or in the humble cot?
Oh tell of thine abode,
Where is the favored spot?

I dwell in each pure heart
Which puts its trust in Heaven,
And makes its days as peaceful
As a cloudless summer even.

B e n e d i c t i o n .

SIGNIFICATION . . Having obtained mercy.
 EMBLEM Trefoil.
 SENTIMENT Providence.

“JUST as a mother with sweet, pious face,
 Yearns towards her children from her seat,
 Gives one a kiss, another an embrace,
 Takes this upon her knee, that on her feet;
 And while from actions, looks, complaints, pretences,
 She learns their feelings and their various will,
 To this a look, to that a word dispenses,
 And whether stern or smiling, loves them still : —
 So Providence for us, high, infinite,
 Makes our necessities its watchful task,
 Harkens to all our prayers, helps all our wants ;
 And even if it denies what seems our right,
 Either denies because 't would have us ask.
 Or seems but to deny, or in denying grants.”

· ANON.

Bath.

SIGNIFICATION . . Contentment.

EMBLEM Houstonia.

SENTIMENT Content.

I WOULD not that earth's richest mines
Should yield for me their store ;
Nor golden rivers at my feet,
Their shining treasures pour.

I would not that Fame's trumpet voice
Should herald forth my name ;
Nor Honor's proud and lofty place,
I would not wish to claim.

I would that in some humble vale,
Some quiet rural spot,
I there might find a welcome home,
To be my happy lot.

'T is there alone, I'd hope to find
Sweet hours of peaceful rest ;
'T is there, contented, I would dwell,
With one I love the best.

N. S. T.

Saloma.

SIGNIFICATION . . . Perfect.

EMBLEM Pine Apple.

SENTIMENT You are perfect.

FEW can here of perfection boast,
E'en those whose virtues are the most ;
Yet we in truth should persevere,
Though we may not be perfect here.

Yet every evil of the heart,
Should be opposed till it depart ;
In Heaven we know that we shall be
Free from earth's impurity.



Supplicator.

SIGNIFICATION . . . One who relates or tells.

EMBLEM Ipomea.

SENTIMENT Busy-bodies are a dangerous sort of
people.

Oh, who would be a tatler
And bear a serpent's tongue?
To give forth only poison
To those she dwells among?

Oh, who would be a tatler?
A torment to one's neighbor?
A mischief-making busy-body,
Who rather talk than labor?

Oh, never be a tatler,
To spread ill-will and strife!—
I'd sooner seek some cavern,
And lead a hermit's life.

Sarah.

SIGNIFICATION . . Princess.
EMBLEM Fir Tree.
SENTIMENT Elevation.

SHOULD we a lofty station prize,
And those in humble life despise ?
Should riches make us scorn the poor,
And turn the needy from our door ?
Should fashion's splendor fill the heart,
And bid all kindly thoughts depart ?
No ! let us rather strive to fill
The world with good instead of ill ;
Let wealth be used the poor to bless,
And save from human wretchedness ;
Power, used to stop the source of woe,
Bid misery's tear-drops cease to flow ;
Let those who fill a rank above
Their fellow-men, be rich in love,
In prayers, in alms, in smiles, to cheer
The lonely pilgrim, wandering here ;
In loving words, which sad hearts need,
Be rich in thoughts, in words, in deeds !

Sibyl.

SIGNIFICATION . . . Foretelling.

EMBLEM Oleander.

SENTIMENT Beware! shun the coming evil.

Of the flatterer, my friend,
I would bid thee beware;
For beneath a sunny smile
May be a fatal snare.

Tender and winning words,
May lure from truth away,—
Then beware of the flatterer's tongue,
It charms but to betray!

There's much that is deceptive
In this bright world of ours;
For oft the treach'rous thorn
Is hid amid the flowers.

And though thy path seem flowery,
And all around thee fair,—
Remember, e'en in Eden
Was laid a fatal snare.

Sophia.

SIGNIFICATION . . . Wisdom.

EMBLEM Red Mulbury.

SENTIMENT Wisdom.

Is it a mark of wisdom, a sad, long face to wear ?
To speak each little word with special care ?
To scan our neighbor's follies one by one ?
And deck one's self in robes like sober nun ?

To give long lessons to the young and gay,
On all the follies of the present day ?
To talk, for hours, in solemn, mournful tone,
Disclaiming virtues that we know our own ?

Such is the wisdom which we often see ;
But such, Sophia, we've not found in thee :
Thine is the wisdom which kind Heaven imparts
To those who seek it with meek, humble hearts.

Stella.

SIGNIFICATION . . . A Star. ¹
EMBLEM Glory Flower.
SENTIMENT Glorious Beauty.

STARS, bright stars, that gem the skies,
Poets say are angel's eyes,
Beaming from the world above,
Eloquent, and full of love.

Gently on this world of ours,
On its tender, fading flowers,—
Gazing there with fond delight,
From the diadem of night.

They, methinks with angel care,
Left their beauteous impress there,
On each flower's lovely form ; —
Then the stars of earth were born.

Flowers ever charm our eyes,
Pointing upward to the skies ;
While to mortals here is given
Stars on earth, and stars in Heaven.

N. S. T.

Susan.

SIGNIFICATION . . . A Lily.

EMBLEM White Lily.

SENTIMENT Purity and Modesty.

WHEN Poets flatter maidens fair,
Their beauties to a rose compare;
But to a Lily more I find
The likeness true of Susan's mind.

Her modesty, and sweet, pure thoughts,
Fresh to my mind the Lily brought;
Its beauty, purity, and grace
Dwell in her heart, shine in her face.

Dear Susan, may thy heart remain,
Like the white Lily, free from stain;
Unlike the Lily—may naught ever
With ruthless hand its cords dis sever.

Tabitha.

SIGNIFICATION . . Clear Sighted.
EMBLEM Tulip.
SENTIMENT Beautiful Eyes.

To what can we compare thine eyes ?
To the rainbow in the skies ?
Would the pearly drops of dew,
Of thine eyes be emblem true ?
Would the glowing stars above,
Mirror forth thy glance of love ?

May they ever speak to us
Of thy heart in which we trust ;
May the skies' pure azure hue,
Remind us of thine eyes of blue ;
May no sorrows, cares, or fears,
Fill those eyes with bitter tears ;
May they shine on us each day,
Bright as now, with friendship's ray.

Theodosia.

SIGNIFICATION . . . God's Gift.

EMBLEM Potato Blossom.

SENTIMENT Beneficence

ANGEL of Charity ! who from above
Comest to dwell a pilgrim here,
Thy voice is music, thy smile is love,
And Pity's soul is in thy tear !
When on the shrine of God were laid
First fruits of all most good and fair,
That ever grew in Eden's shade,
Thine was the holiest offering there !

Hope, and her sister, Faith, were given,
But as our guides to yonder sky ;
Soon as they reach the verge of Heaven,
Lost in that blaze of bliss, they die.
But long as love, Almighty Love,
Shall on his throne of thrones abide,
Thou, Charity, shalt dwell above,
Smiling forever by His side.

MOORE.

Thirza.

SIGNIFICATION . . Benevolent.

EMBLEM Calycanthus.

SENTIMENT Benevolent.

SHE loveth to do good
 Where'er she goes ; her heart is ever full,
 Yea, to o'erflowing filled with love to all ;
 And from this fountain deep, there ever flows
 Kind thoughts and words, and gentle deeds un-
 checked
 By pride or love of self, but prompted e'er
 By high and holy principle, first taught,
 When Jesus gave that new and great command,—
 “Thy neighbor thou shalt love, as thou thyself
 Dost love.”

The suffering child of want pleads not
 In vain for aid, nor does the orphan's cry
 Fall all unheeded on her ear. For them
 She has a word, a look of love, or gifts,
 Which she bestows with cheerful heart and hand.

The bed of pain and sickness,
Angel-like there, she seems to wait with love,
Ministering aught of joy or comfort,
Or sympathy sincere.

O, she loveth,
In those dark hours of deep distress, to point
The soul away to Him, who all our griefs
And sorrows bore.

N. S. T.



Tryphena.

SIGNIFICATION . . . Delicate.

EMBLEM Flower of an Hour.

SENTIMENT Delicate Beauty.

AH, little flower? why dost thou bloom
But one short hour, and fade so soon?
Why dost thou scarcely take a peep,
Then fold thy leaves and go to sleep?

Thy beauty's bright as it is brief,
So delicate and fair each leaf,
We gaze on thee with fond delight,
And wish that thou wert ever bright.

Like this frail flower we love so well,
Is our Tryphena! we foretell
Her growing charms and beauty rare,
Must fade, as fades this flower so fair.

We sigh to think her beauty's brief,
But we should not o'ercloud with grief
Beauty of soul,—'t is that we prize,
This flower eternal, never dies.

N. S. T.

Tryphosa.

SIGNIFICATION . . . Ever Shining.

EMBLEM Austrian Rose.

SENTIMENT Very Lovely.

SEE that lovely beaming star
Rising o'er the western hills ;
Lighting up the wanderer's path,—
How his heart with pleasure thrills !

But for this his road were lonely ;
Dark and dreary were the way ;
None to guide and none to cheer,
Till the dawn of breaking day.

Like this guiding star of even,
With its mild and friendly light,
Is thy presence dear Tryphosa,
Making all my pathway bright.

Thus through all life's pilgrimage,
Beams thy glad and sunny smile ;
Thus thy sweet and winning graces
All my weary hours begile.

N. S. T.

Mermin.

SIGNIFICATION . . . Star-gazer.

EMBLEM Witch Hazel.

SENTIMENT A Spell.

WHY dost thou gaze so oft upon
Those twinkling gems of night?
Knowest thou not a brighter star
Gleams o'er our longing sight?

There is a star — a beauteous star,
Whose mild and cheering rays
Light up this dreary darksome world,
With hope's of brighter days.

This blessed light, so constant, pure,
Adorns and cheers our way,
And ever in our sky appears,
To shed its genial ray.

The sick man hails its dawning light,
It cheers his aching breast
With promise of returning health,
And hours of peaceful rest.

When sorrow veils the spirit's sky,
With deepest midnight gloom,
This star appears with welcome light,
And points beyond the tomb.

Faith pointeth upward to that world
Where the good and pure shall meet,
In one unbroken happy band,
Around the mercy seat.

N. S. T.



Victoria.

SIGNIFICATION . . . Victory.
EMBLEM Palm Tree.
SENTIMENT Victor.

VICE can never dwell with thee
In thy soul of purity ;
Charity, the blest of Heaven,
To thee is in large measure given ;
O ever cherish virtue rare,
Resign it not to other's care ;
Innocence shall thy helmet be,
And truth thy strongest panoply.



S i l p h.

SIGNIFICATION . . Frailty.

EMBLEM Anemone.

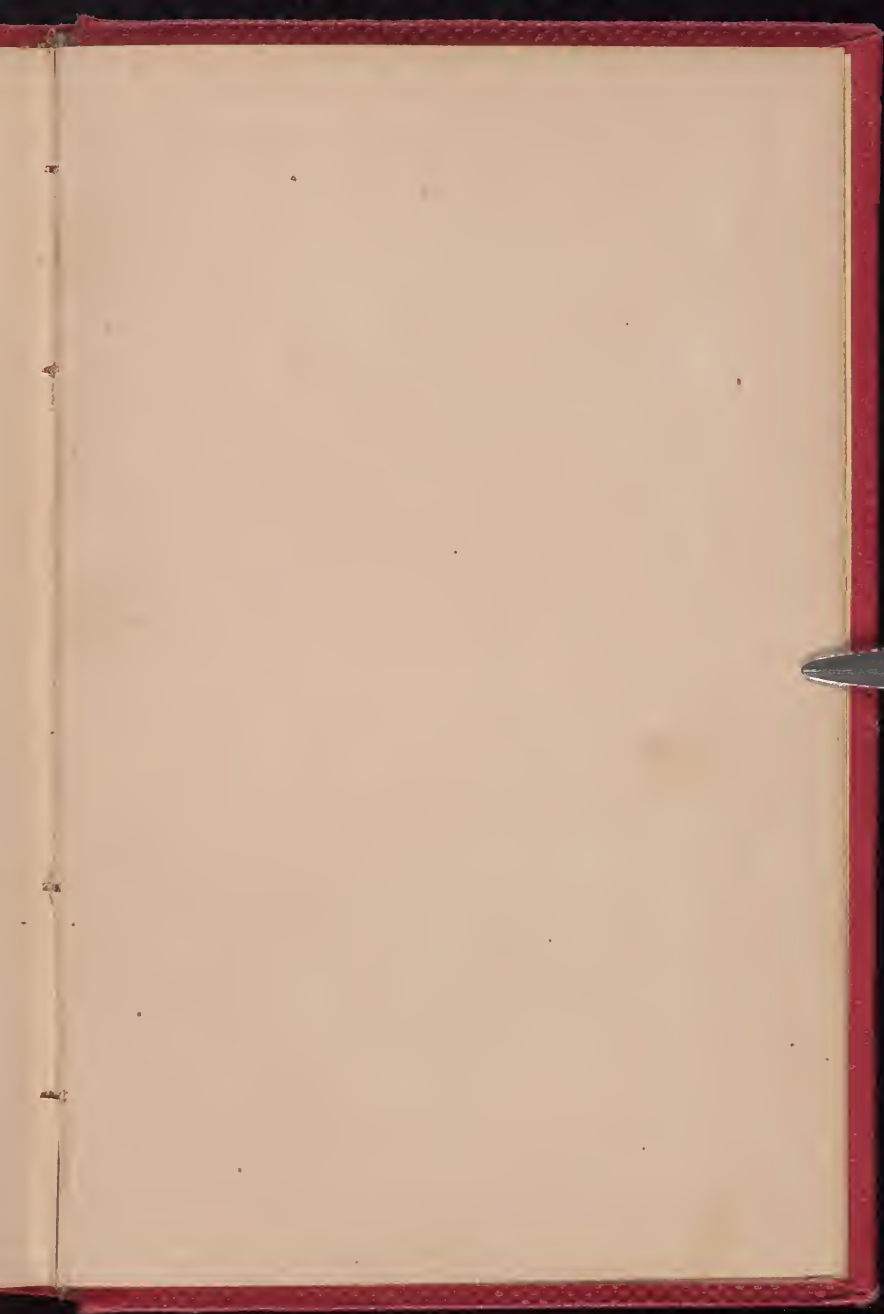
SENTIMENT Frailty.

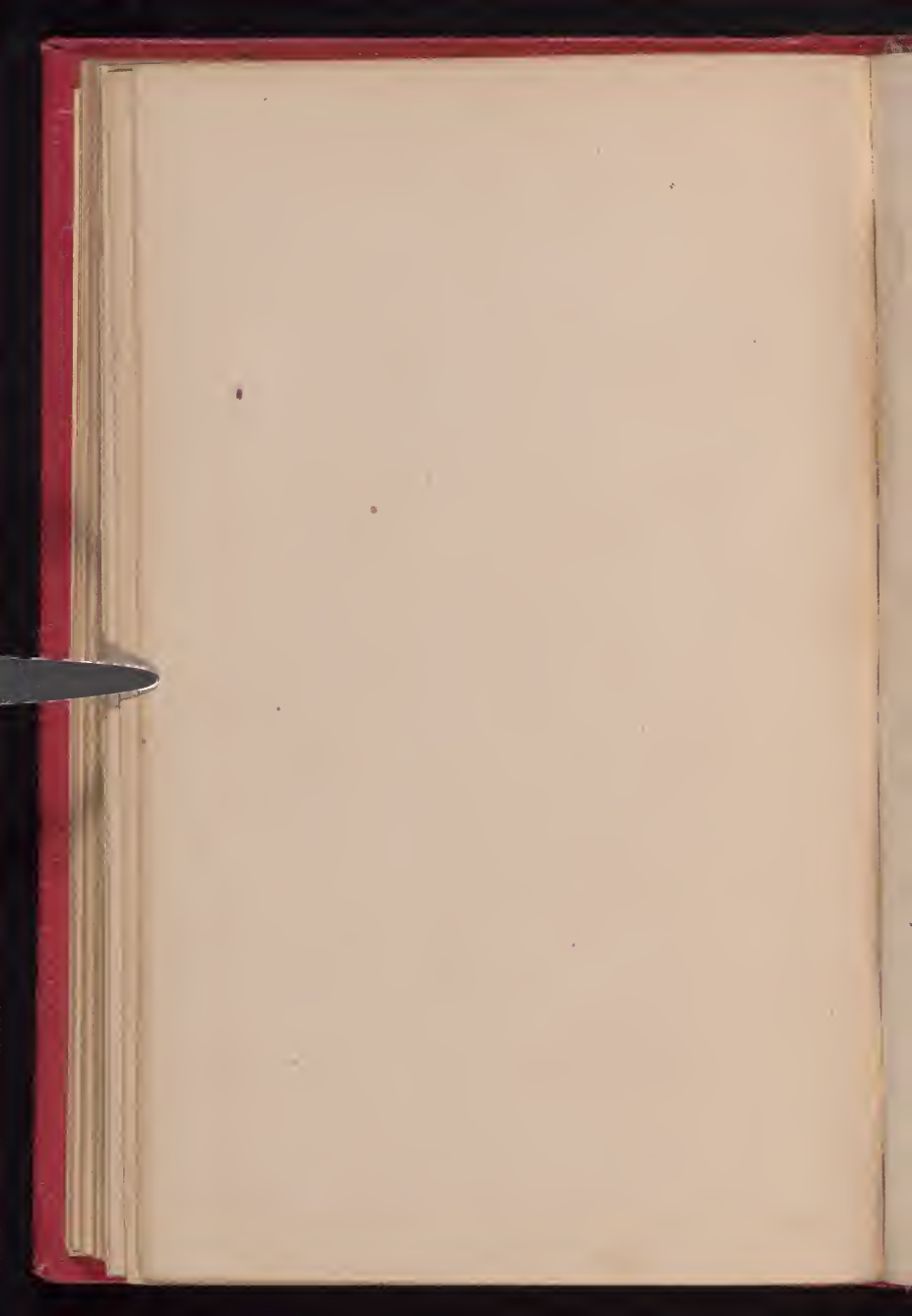
THOU canst not bear the storms of life ;
Too frail thou art for its stern strife ;
May no dark clouds thy sky o'ercast !
How could'st thou bear misfortune's blast ?
But folded in a loving heart,
There thou could'st act thy quiet part.

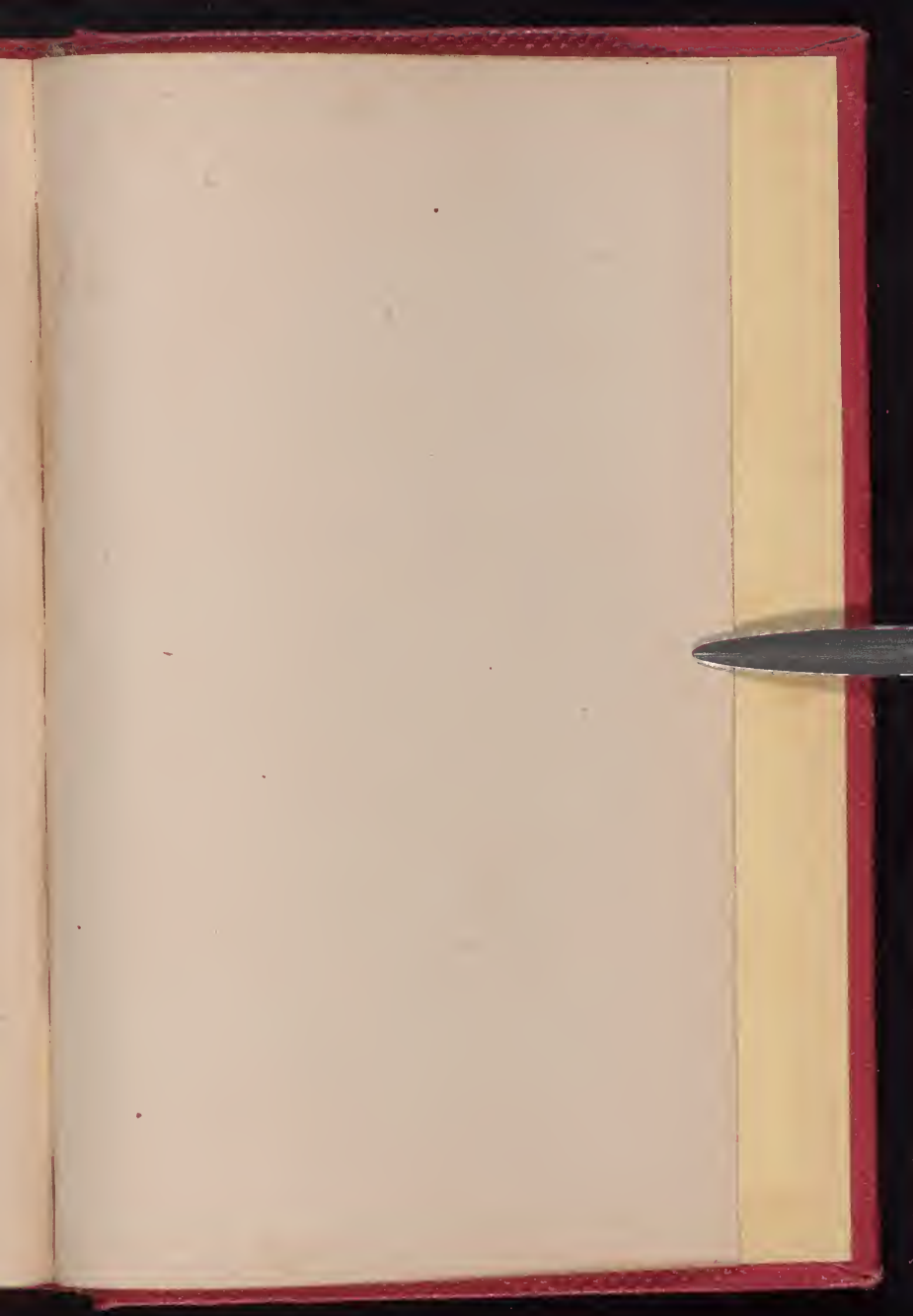
May no rude winds sweep o'er thy brow,
And lay my humble floweret low ;
But may affection's genial sun
Shine gently on my fair, frail one ;
And when life's storms around thee moan,
May some brave heart shelter thine own.



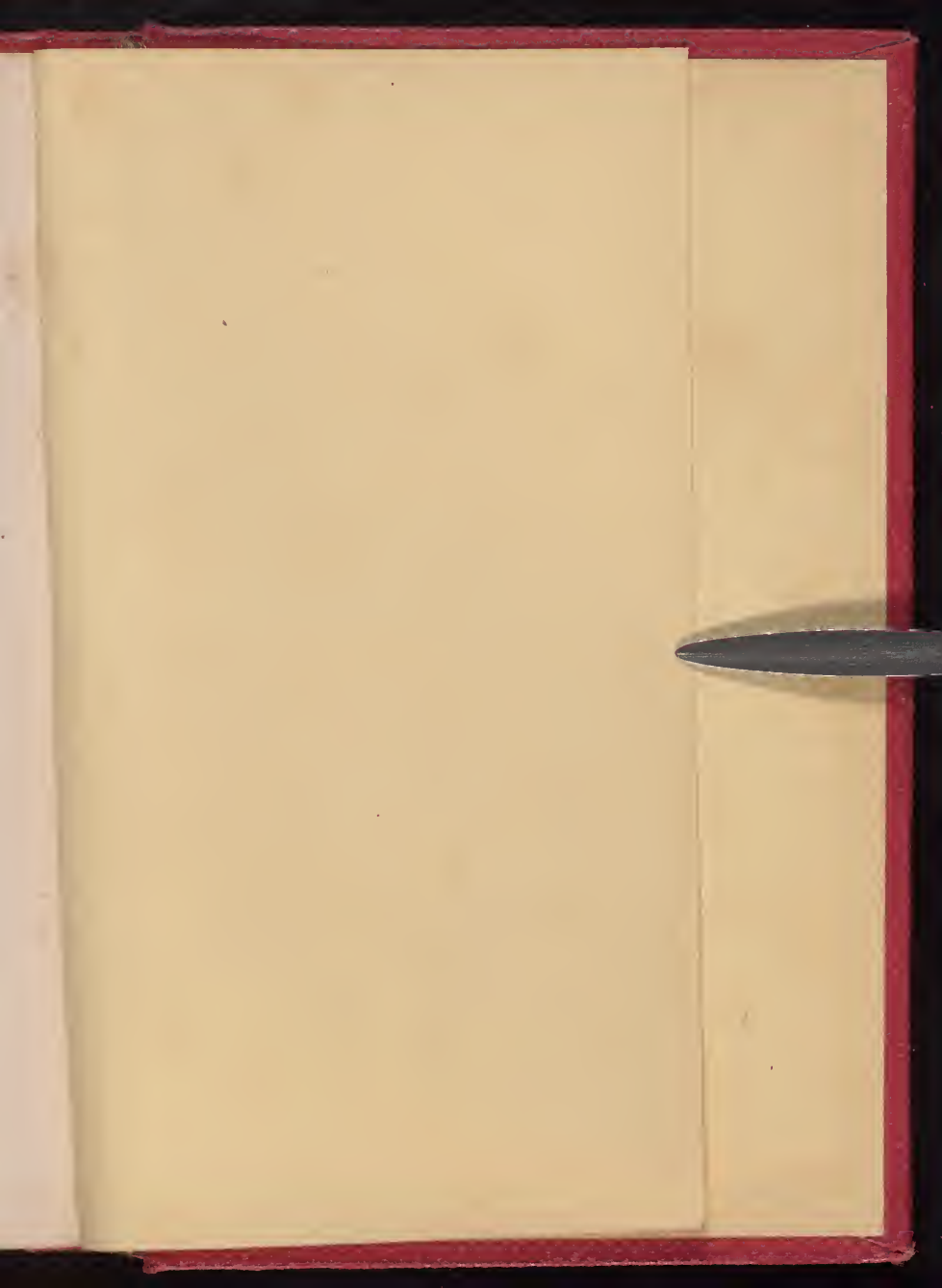


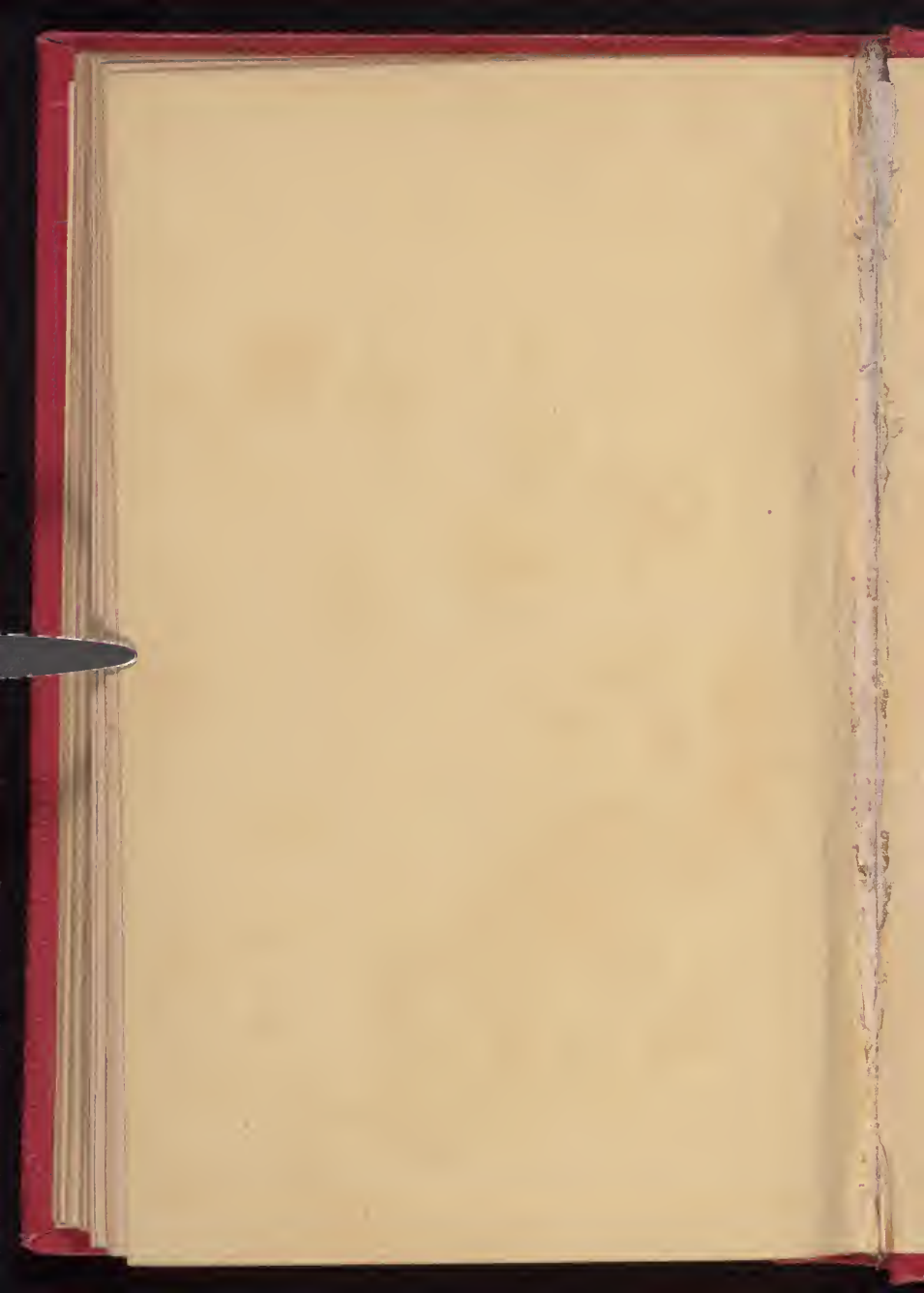




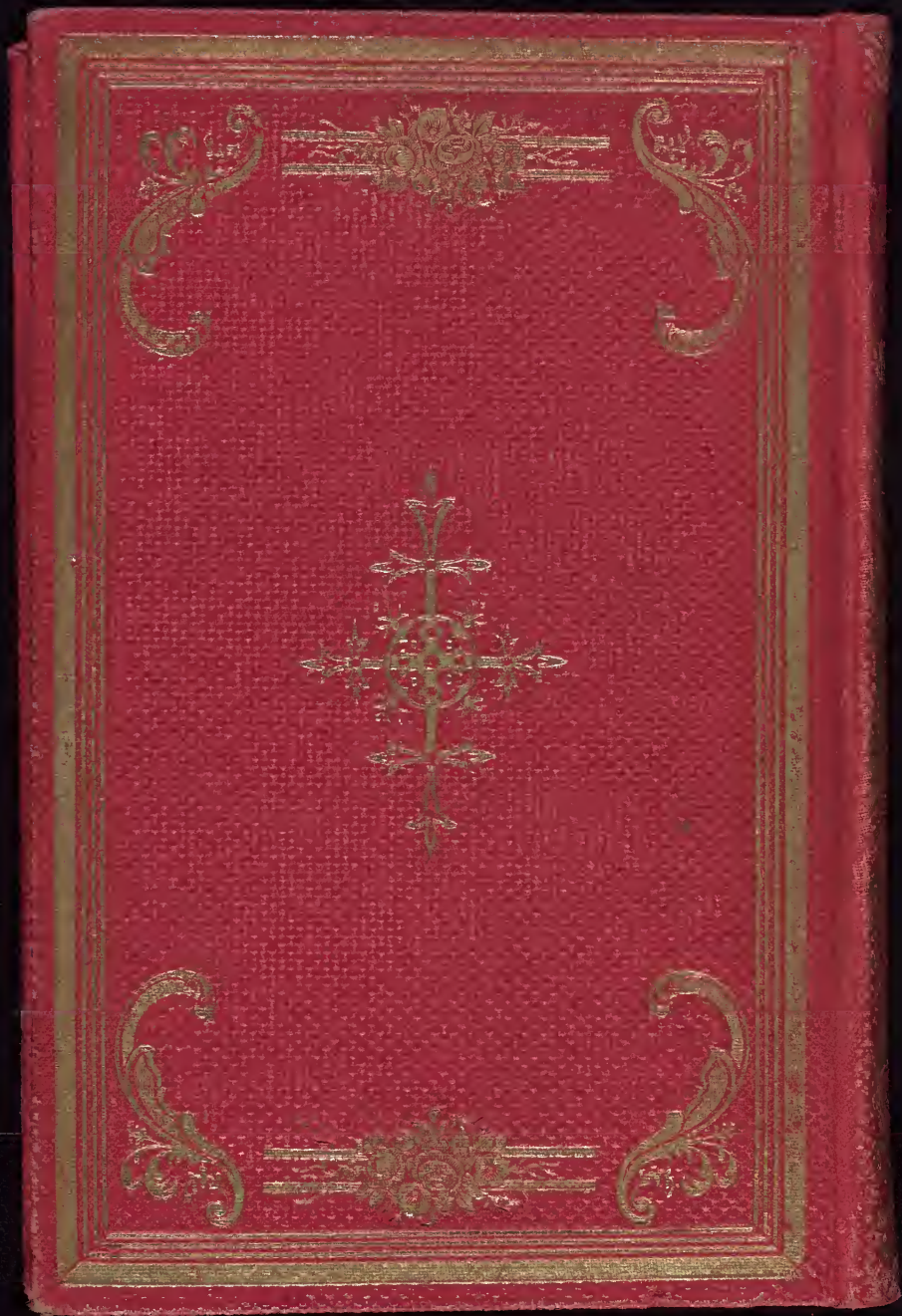








100
Rd



MAUD MULLER.

[We republish the following poem of the season, by John G. Whittier, the Quaker poet, at the request of a lady friend who esteems it the most perfect specimen of ballad poetry ever penned by an American author. Even those of our readers who may have seen it before, will rejoice in the possession of a fresh and perfect copy.]

Maud Muller, on a summer's day,
Raked the meadow sweet with hay.

Beneath her torn hat glowed the wealth
Of simple beauty and rustic health.

Singing, she wrought, and her merry glee
The mock-bird echoed from every tree.

But when she glanced to the far-off town,
White from its hill-slope looking down,

The sweet song died, and a vague unrest
And a nameless longing filled her breast—

A wish, that she hardly dared to own,
For something better than she had known.

The Judge rode slowly down the lane,
Smoothing his horse's chestnut mane.

He drew his bridle in the shade
Of the apple-trees, to greet the maid,

And ask a draught from the spring that flowed
Through the meadow, across the road.

She stooped where the cool spring bubbled up,
And filled for him her small tin cup,

And blushed as she gave it, looking down
On her feet so bare and her tattered gown.

"Thanks!" said the Judge; "a sweeter draught
From a fairer hand was never quaffed."

He spoke of the grass and flowers and trees,
Of the singing birds and humming bees;

Then talked of the haying, and wondered whether
The cloud in the west would bring foul weather;

Till Maud forgot her brier-torn gown,
And her graceful ankles bare and brown;

And listened, while a pleased surprise
Looked from her long-lashed hazel eyes.

At last like one who for delay
Seeks a vain excuse, he rode away.

Maud Muller looked and sighed: "Ah me!
That I the Judge's bride might be!

"He would dress me up in silks so fine,
And praise and toast me at his wine,—

"My father should wear a broadcloth coat;
My brother should sail a painted boat,—

"I'd dress my mother so grand and gay,
And the baby should have a new toy each day,—

"And I'd feed the hungry and clothe the poor,
And all should bless me who left our door."

The Judge looked back as he climbed the hill,
And saw Maud Muller standing still.

"A form more fair, a face more sweet,
Ne'er hath it been my lot to meet—

"And her modest answer and graceful air
Show her wise and good as she is fair—

"Would she were mine, and I to-day,
Like her, a harvester of hay;

"No doubtful balance of rights and wrongs,
Nor weary lawyers with endless tongues;

"But low of cattle and song of birds,
And health and quiet and loving words."

But he thought of his sister, proud and cold,
And his mother, vain of her rank and gold.

So, closing his heart, the Judge rode on,
And Maud was left in the field alone.

But the lawyers smiled that afternoon,
For he hummed in the court an old love-tune;

And the young girl mused beside the well,
Till the rain on the unraked clover fell.

He wedded a wife of richest dower,
Who lived for fashion, as he for power.

Yet oft, in his marble hearth's bright glow,
He watched a picture come and go;

And sweet Maud Muller's hazel eyes
Looked out in their innocent surprise.

Oft, when the wine in his glass was red,
He longed for the wayside well instead;

And closed his eyes on his garnished rooms;
To dream of meadows and clover blooms;

Till the proud man sighed with a secret pain:
"Ah, would that I were free again!

"Free as I was when I rode that day,
Where the barefoot maiden raked the hay!"

She wedded a man unlearned and poor,
And many children played round her door;

But care and sorrow, and child-birth pain
Left their traces on her heart and brain;

And oft, when the summer sun shone hot
On the new-mown hay in the meadow lot,

And she heard the spring brook fall
Over the road-side, through the wall;

In the shade of the apple-tree again
She saw a rider draw his rein;

And, gazing down with a timid grace,
She felt his pleased eyes read her face.

Sometimes her narrow kitchen walls
Stretched away into stately halls;

The weary wheel to a spinnet turned,
The tallow candle an astral burned,

And for him who sat by the chimney-lug,
Dozing and grumbling o'er pipe and mug,

A manly form at her side she saw,
And joy was duty and love and law.

Then she took up her burden of life again,
Saying only, "It might have been."

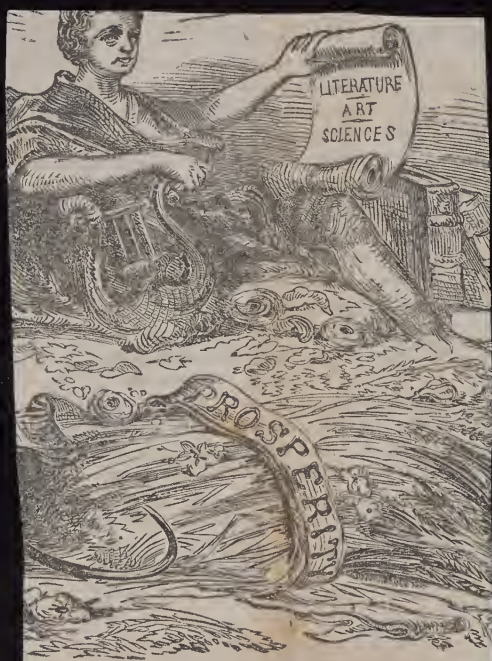
Alas! for maiden; alas! for Judge,
For rich repiner and household drudge!

God pity them both! and pity us all,
Who vainly the dreams of youth recall—

For of all sad words of tongue or pen,
The saddest are these: "It might have been!"

Ah, well! for us all some sweet hope lies
Deeply buried from human eyes;

And, in the hereafter, angels may
Roll the stone from its grave away.



TO BENEFIT.---E

ATURDAY, AUGU

"Would that it were!"

"I cannot trust the foul tale."

"You can appreciate the sacrifice which I have made in telling you this dreadful tale. You are free to do as you will."

"Oh, God! This is infamous!" gasped the stricken lover.

"Will you marry her now?"

"Marry a ——"

"Hush!" interposed Colonel Melville, with a flushed cheek. Marry her, and I will settle a hundred thousand dollars upon her. As I regard it, she has committed no crime. She has been more sinned against than sinning; and her soul is as pure as though the touch of contamination had never fallen upon her."

"Would God that I had never seen her!" cried Dr. Greenwood, in the most terrible anguish."

"I say her soul is as pure as when she was born into the world. A hundred thousand dollars shall be your portion."

"No, sir."

"Consider well. I was not willing she should become your wife without your knowledge of these facts."

"You were noble and generous, sir. I appreciate your motives, and I thank you from the bottom of my heart; but I never can look upon her face again."

"And thus betray my secret?"

"I have heard the rumor before."

"No one believes it."

"I will leave the city."

"I am sorry for you, sorry for her, for she loves you with all her heart."

"Oh God!" sighed the lover, as he seized his hat and fled from the house.

His hopes were blasted. Fannie Melville such a thing! Her painted smile was a lie, and all that he had loved a phantom!

Ere the shades of evening had darkened upon the city he had fled like a felon from its walls.

CHAPTER III.

HIGHROCK.

Near the coast of Maine, and not far from the mouth of the Kennebec, a small but beautiful island, which, for the sake of a better name, shall call Highrock. On the seaward side, the land terminated in an abrupt cliff, while the other extremity was a sandy beach. The middle was covered with a thick growth of pine trees, part of which had been cleared away, to furnish a "garden spot" for Mat. Rider, an old fisherman, who dwelt on the island.

Mat. was universally regarded as a "queer stick," yet he was as honest, warm-hearted, and just, as he was singular. His history would no doubt furnish a very interesting and instructive narrative; but as Mat. is not the hero nor his wife the heroine of our romance, we shall beg his pardon for the slight we put upon him, by our neglect and pass on to our story.

Three years have passed away since the event of our last chapter, and the family of old Mat. at Highrock, had been reinforced by the addition of a young woman, who was generally regarded as insane. How she came upon the island, what was her history, or what her name, neither the imaginative fisherman, nor his more inquisi-