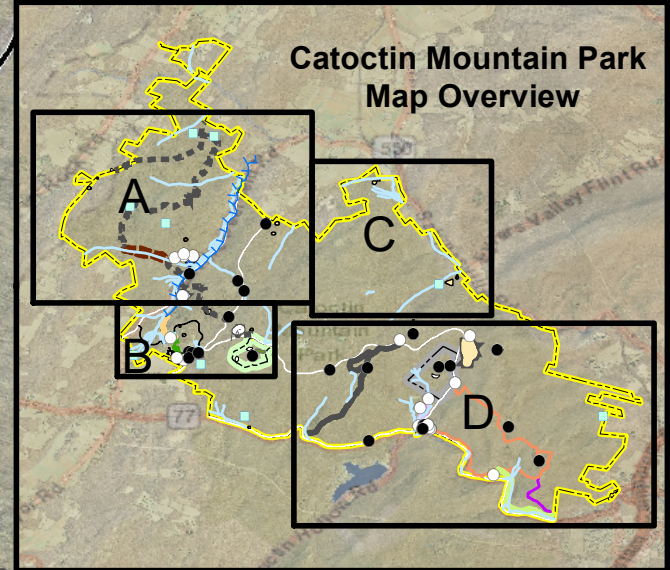
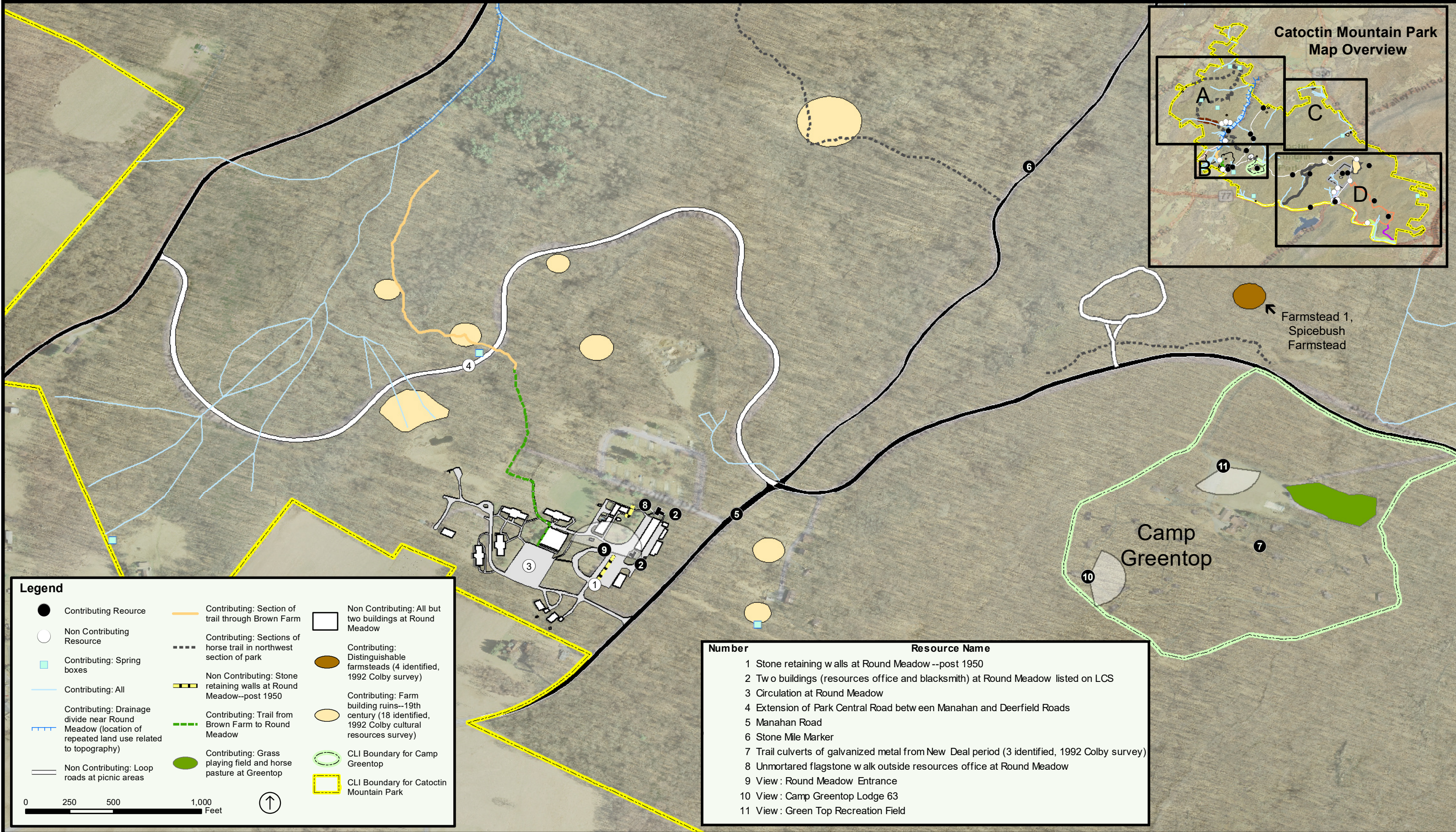


Catoctin Mountain Park

Catoctin Mountain Park: Existing Conditions Site Plan: Map B

National Capital Region - Cultural Landscapes Program - Cultural Landscape Inventory: 2014



Farmstead 1, Spicebush Farmstead

Camp Greentop

Legend

- Contributing Resource
- Non Contributing Resource
- Contributing: Spring boxes
- Contributing: All
- Contributing: Drainage divide near Round Meadow (location of repeated land use related to topography)
- Non Contributing: Loop roads at picnic areas
- Contributing: Section of trail through Brown Farm
- Contributing: Sections of horse trail in northwest section of park
- Non Contributing: Stone retaining walls at Round Meadow--post 1950
- Contributing: Trail from Brown Farm to Round Meadow
- Contributing: Grass playing field and horse pasture at Greentop
- Non Contributing: All but two buildings at Round Meadow
- Contributing: Distinguishable farmsteads (4 identified, 1992 Colby survey)
- Contributing: Farm building ruins--19th century (18 identified, 1992 Colby cultural resources survey)
- CLI Boundary for Camp Greentop
- CLI Boundary for Catoctin Mountain Park

0 250 500 1,000 Feet

Number	Resource Name
1	Stone retaining walls at Round Meadow --post 1950
2	Two buildings (resources office and blacksmith) at Round Meadow listed on LCS
3	Circulation at Round Meadow
4	Extension of Park Central Road between Manahan and Deerfield Roads
5	Manahan Road
6	Stone Mile Marker
7	Trail culverts of galvanized metal from New Deal period (3 identified, 1992 Colby survey)
8	Unmortared flagstone walk outside resources office at Round Meadow
9	View: Round Meadow Entrance
10	View: Camp Greentop Lodge 63
11	View: Green Top Recreation Field