

## **Historic, archived document**

Do not assume content reflects current scientific knowledge, policies, or practices.



U. S. Department of Agriculture

FOREST SERVICE

GIFFORD PINCHOT, FORESTER

1  
F765Fo  
Sundance  
Reserve

Flat  
Folio

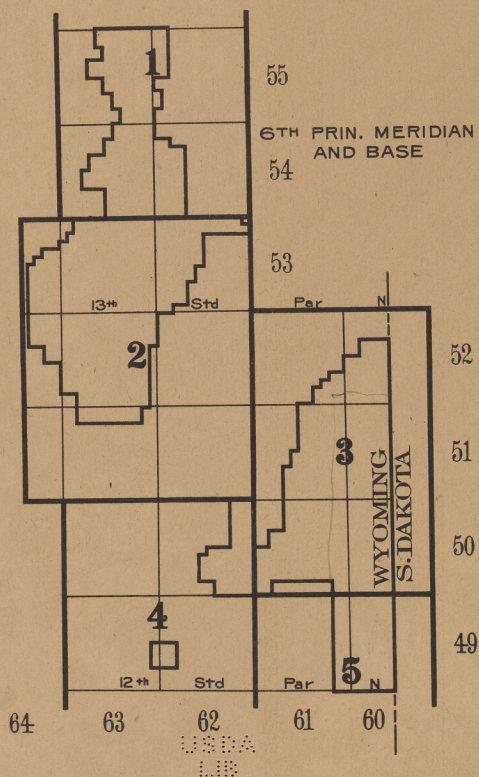
# FOREST ATLAS

OF THE

NATIONAL FORESTS OF THE UNITED STATES

## SUNDANCE

FOLIO



# FOREST ATLAS LEGEND PAGE

## GENERAL CLASSIFICATION

Commercial Timber	
	Less than 2,000 B.F. per acre
	2,000 to 5,000 B.F. per acre
	5,000 to 10,000 B.F. per acre
	10,000 to 25,000 B.F. per acre
	25,000 to 50,000 B.F. per acre
	Woodland, cordwood, poles, etc.
	Chaparral or brush
	Sagebrush
	Grassland, parks, etc.
	Barren, above timber line, etc.
	Desert
	Burn, not restocking
	Burn, scattering trees or restocking
	Burn, forest cover established (The color indicates the stand)
	Windfall
	Bug-killed or diseased
	Old cutting, less than 1/4 of the merchantable timber removed
	Old cutting, 1/4 to 3/4 of the merchantable timber removed
	Old cutting, 3/4 to all of the merchantable timber removed
	Timber sales, less than 1/4 of the merchantable timber removed
	Timber sales, 1/4 to 3/4 of the merchantable timber removed
	Timber sales, 3/4 to all of the merchantable timber removed
	Cultivated
	Irrigated

## TITLE

	State lands, approved
	State lands, not approved
	Indian allotments
	Lien selections
	Pending base
	RP Railway lands, patented
	R Railway lands, not patented
	HP Homesteads, patented
	H Homesteads, not patented
	CE Cash entry
	T Timber and stone
	C Coal entry
	D Desert entry
	TE Townsite entry

	Mineral lode claims, patented
	P Mineral placer claims, patented
	M Mineral mill site, patented
	MC Mineral classification

## GRAZING MAP LEGEND

	Supervisor's headquarters
	Supervisor's division
	Ranger's division
	Grazing districts
	Open for all stock
	Open for cattle and horses only
	Open for sheep and goats only
	Closed for all stock
	Lambing grounds
	Driveways for stock
	Corral

## CONVENTIONAL SIGNS

	Block line
	Compartment line, sales
	Boundary line for all other classifications
	Grant line
	Telegraph line
	Telephone line
	Power line
	Pipe line
	Aqueduct
	Railroad
	Tranway
	Wire rope conveyor
	Wagon road
	Secondary or private road
	Pack trail
	Foot trail
	Fire line
	Fence
	Ditch
	Flume
	Slide
	Log driving route
	Rollway
	Skidway
	Bridge
	Ferry
	Ford
	Experimental nursery (area)
	Experimental nursery (location)
	Permanent nursery (area)
	Permanent nursery (location)
	Forested by natural seeding
	Forested by artificial seeding
	Forested by planting
	Location of silvical experiments
	Corral
	Supervisor's headquarters
	Ranger's headquarters, no house
	Ranger's headquarters, with house
	House
	Railroad station
	Stage station
	Power station
	Hotel
	Store
	School
	Church
	Cemetery
	TEL. Telephone office
	TLP. Telephone office
	Cabin
	Dairy
	Logging camp
	Sawmill, portable
	Sawmill, stationary
	Grist mill
	Grist and sawmill
	Apiary
	Windmill
	Well
	Quarry or gravel pit
	Mine location, unpatented
	Mine shaft
	Triangulation station
	Bench mark.

## ALPHA-NUMERIC SYMBOLS FOR WESTERN COMMERCIAL TREE SPECIES

These will be used on maps, where limited space makes necessary, in the following manner:

<b>D129</b>	= <i>Pseudotsuga taxifolia</i> , average stand 29,000 B.M. per acre
<b>Q612</b>	= <i>Quercus agrifolia</i> , average stand 12 cords per acre
<b>T67</b>	= <i>Thuja plicata</i> , average stand 7 tele-poles per acre
<b>P0</b>	<i>Pinus contorta (murrayana)</i>
1	flexilis
2	monticola
3	lambertiana
4	ponderosa
5	coulteri
6	sabiniana
7	jeffreyi
8	radiata
9	attenuata
<b>B2</b>	<i>strobiformis</i>
5	albicaulis
6	torreyana
7	edulis
9	monophylla
<b>A1</b>	<i>Abies magnifica</i>
2	concolor
3	shastensis
4	nobilis
5	lasiocarpa
6	grandis
7	arizonica
8	amabilis
9	venusta
<b>S2</b>	<i>Picea engelmanni</i>
3	parryana
5	breweriana
6	sitchensis
<b>D1</b>	<i>Pseudotsuga taxifolia</i>
5	macrocarpa
<b>H5</b>	<i>Tsuga mertensiana</i>
6	heterophylla
<b>R1</b>	<i>Sequoia sempervirens</i>
5	washingtoniana
<b>C5</b>	<i>Chamaecyparis nootkatensis</i>
6	lawsoniana
<b>T6</b>	<i>Thuja plicata</i>
<b>L5</b>	<i>Larix lyallii</i>
7	occidentalis
<b>O5</b>	<i>Libocedrus decurrens</i>
<b>K5</b>	<i>Cupressus maenabiana</i>
6	macrocarpa
7	arizonica
8	goveniana
<b>J1</b>	<i>Juniperus utahensis</i>
2	pachyphloea
4	occidentalis
5	sabinoidea
7	californica
9	monosperma
<b>Q0</b>	<i>Quercus chrysolepis</i>
1	californica
2	lobata
3	douglasii
4	garryana
5	wislimoni
6	agrifolia
7	gambelii
8	densiflora
9	engelmanni
<b>M2</b>	<i>Acer macrophyllum</i>
5	glabrum
9	negundo californicum
<b>W0</b>	<i>Populus trichocarpa</i>
2	fremontii
5	tremuloides
7	angustifolia
<b>F1</b>	<i>Fraxinus pennsylvanica</i>
6	oregona
8	lanceolata
<b>U1</b>	<i>Prunus demissa</i>
<b>Y7</b>	<i>Platanus wrightii</i>
8	racemosa
<b>X0</b>	<i>Salix lasiandra</i>
2	sessilifolia
9	amygdaloides
	Lodgepole Pine
	Limber Pine
	Western White Pine
	Sugar Pine
	Yellow Pine
	Coulter Pine
	Gray Pine
	Jeffrey Pine
	Monterey Pine
	Knobcone Pine
	Mexican White Pine
	White-bark Pine
	Torrey Pine
	Pinon
	Single-leaf Pinon
	Magnificent Fir
	White Fir
	Shasta Fir
	Noble Fir
	Alpine Fir
	Lowland Fir
	Arizona Cork Fir
	Lovely Fir
	Bristle-cone Fir
	Engelmann Spruce
	Blue Spruce
	Weeping Spruce
	Sitka Spruce
	Douglas Fir (Red)
	Bigcone Spruce
	Black Hemlock
	Western Hemlock
	Redwood
	Bigtree
	Yellow Cedar
	Port Orford Cedar
	Red Cedar
	Alpine Larch
	Western Larch
	Incense Cedar
	Macnab Cypress
	Monterey Cypress
	Arizona Cypress
	Gowen Cypress
	Utah Juniper
	Alligator Juniper
	Western Juniper
	Mountain Juniper
	California Juniper
	One-seed Juniper
	Canyon Live Oak
	California Black Oak
	California White Oak
	Blue Oak
	Pacific Post Oak
	Highland Oak
	California Live Oak
	Gambel Oak
	California Tanbark Oak
	Engelmann Oak
	Oregon Maple
	Dwarf Maple
	California Boxelder
	Black Cottonwood
	Fremont Cottonwood
	Aspen
	Narrowleaf Cottonwood
	Red Ash
	Oregon Ash
	Green Ash
	Western Choke Cherry
	Arizona Sycamore
	California Sycamore
	Western Black Willow
	Silverleaf Willow
	Almondleaf Willow

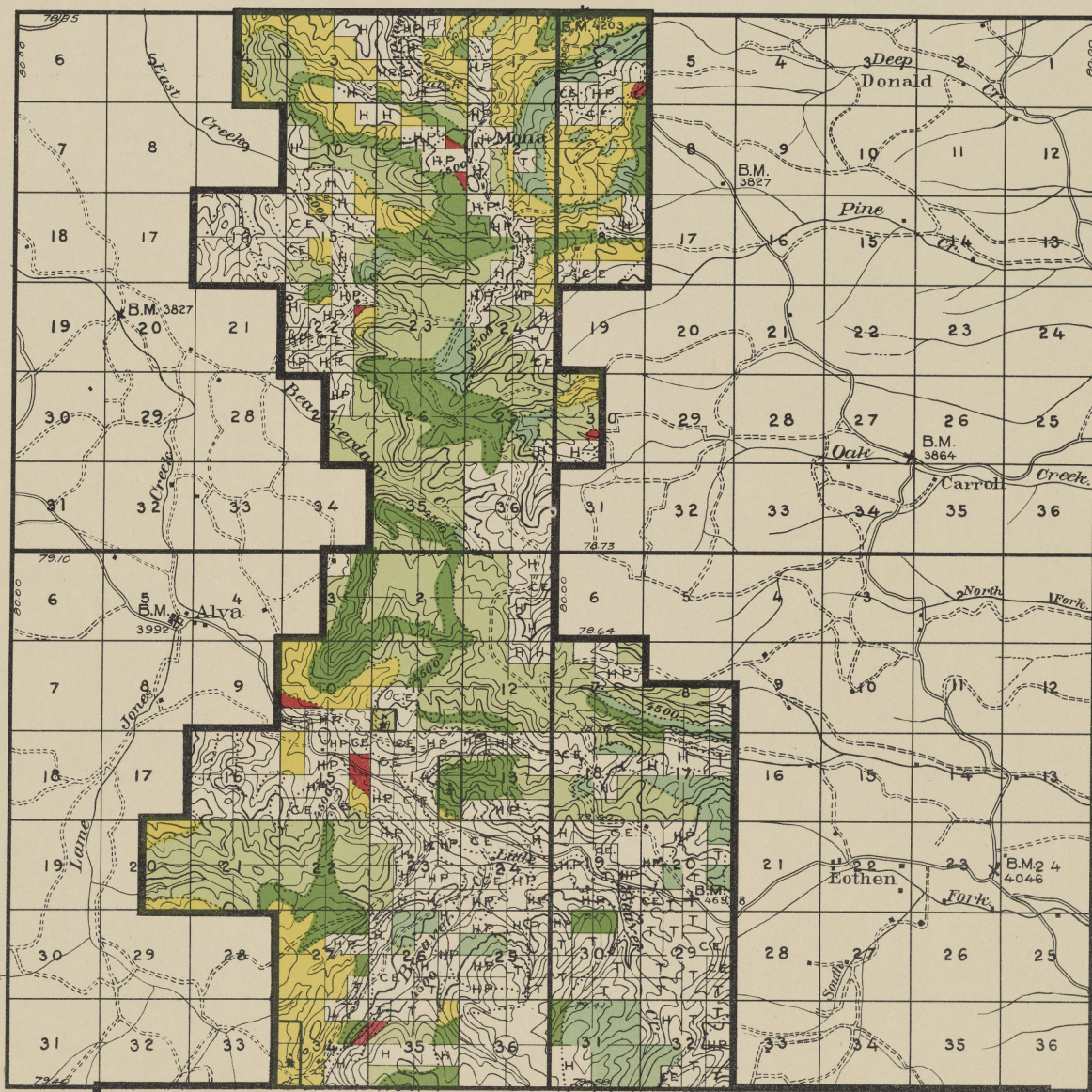
U.S. Improvements made by the United States are marked U. S.

Proposed improvements are shown by the appropriate sign and designated by "Proposed" on the margin of the maps

Abandoned improvements are shown by zeros O O O O and designated on the margin of the maps

Additional buildings may be shown by using the house sign (■) with a written designation; thus:

- Slaughter house
- Livery barn
- Sanatorium
- etc., etc.



T. 55 N.

40 40'  
T. 54 N.

COMPILATION  
 Topography from U. S. Geological Survey maps  
 Land lines from General Land Office plots  
 Classification by Forest Service

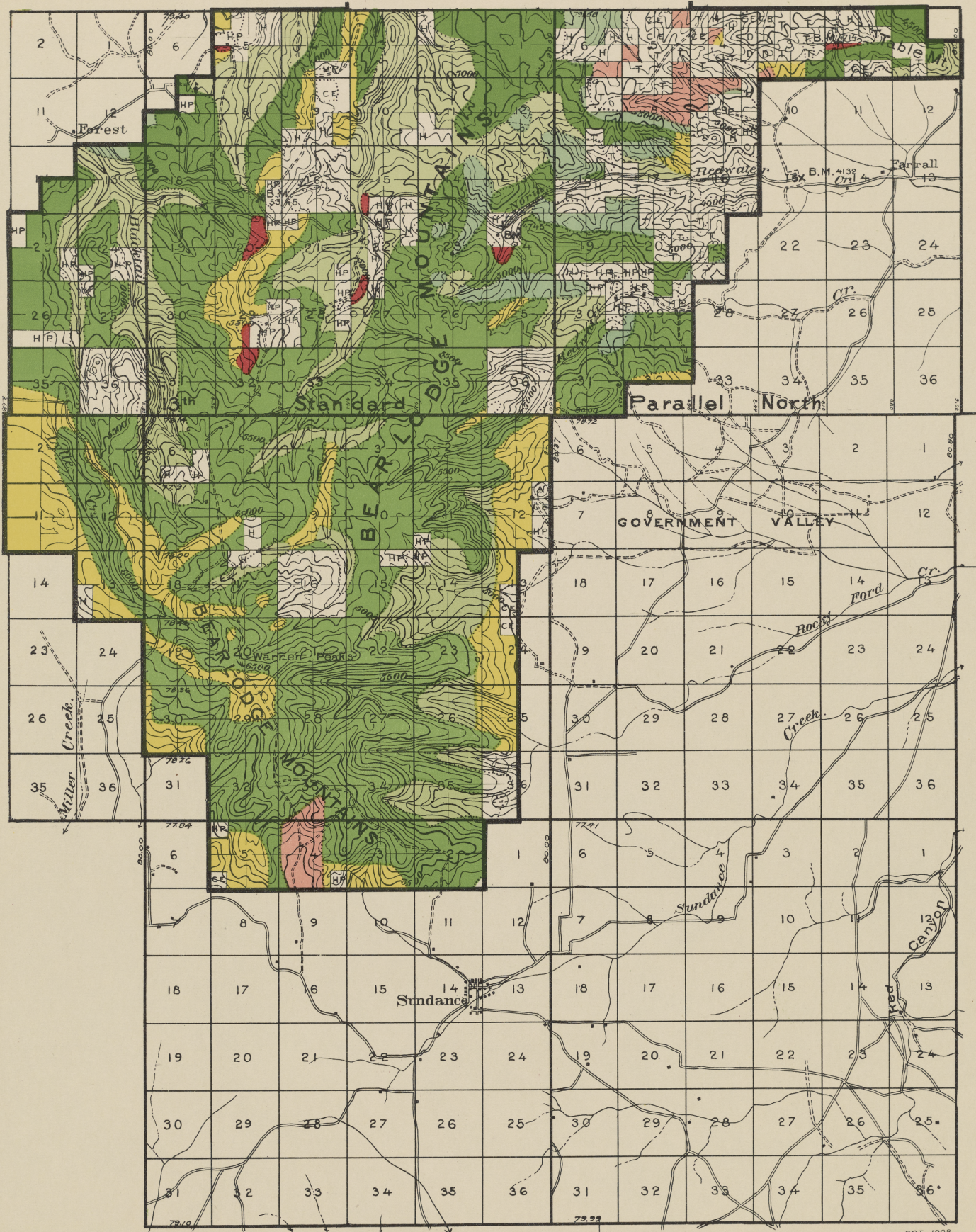
104 20'

OCT., 1908

R. 63 W.

R. 62 W.

SUNDANCE



T. 53 N.

T. 52 N.

T. 51 N.

COMPILATION  
 Topography from U. S. Geological Survey maps  
 Land lines from General Land Office plats  
 Classification by Forest Service

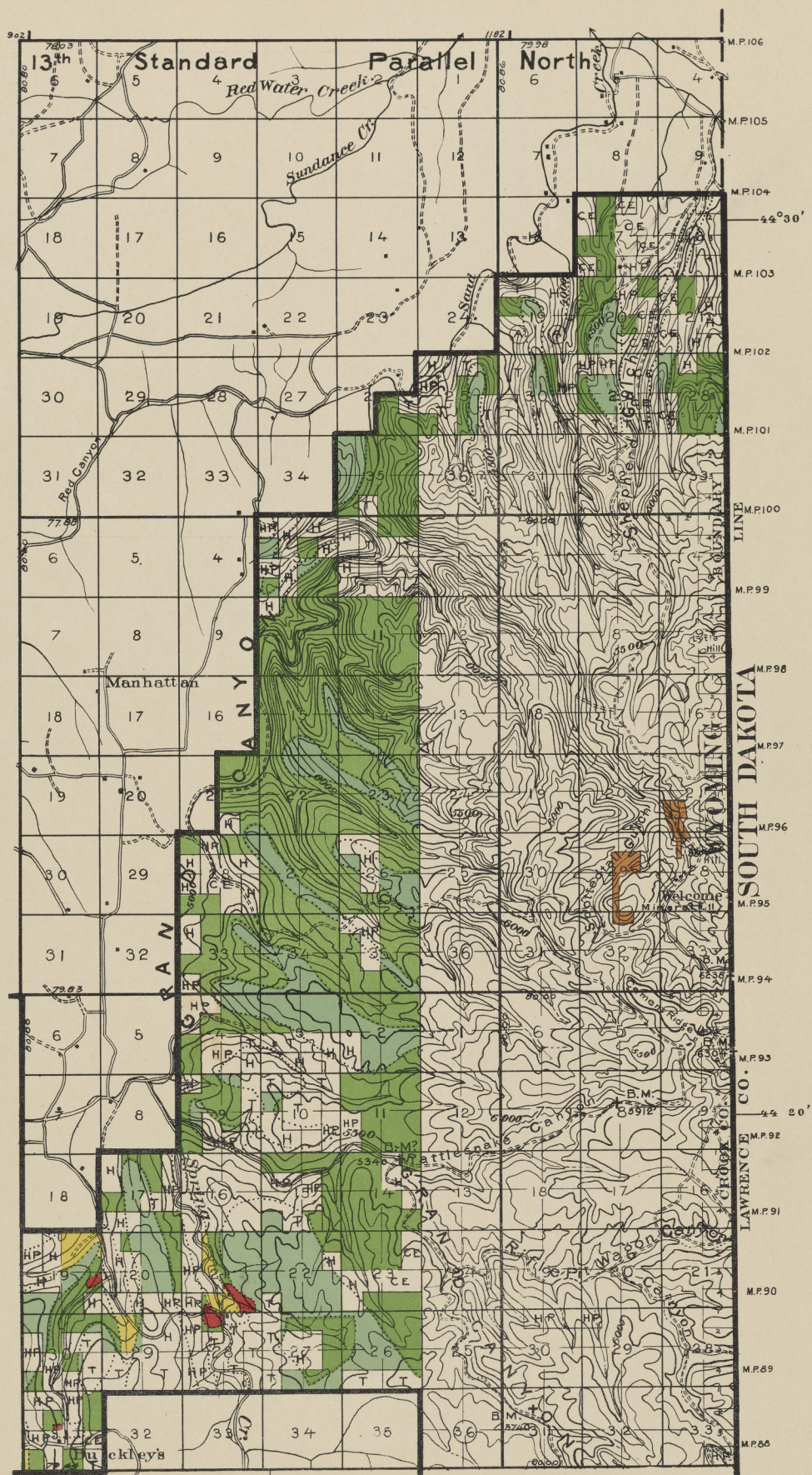
104° 20'

OCT., 1908

SUNDANCE

R. 63 W.

R. 62 W.



T. 52 N.

T. 51 N.

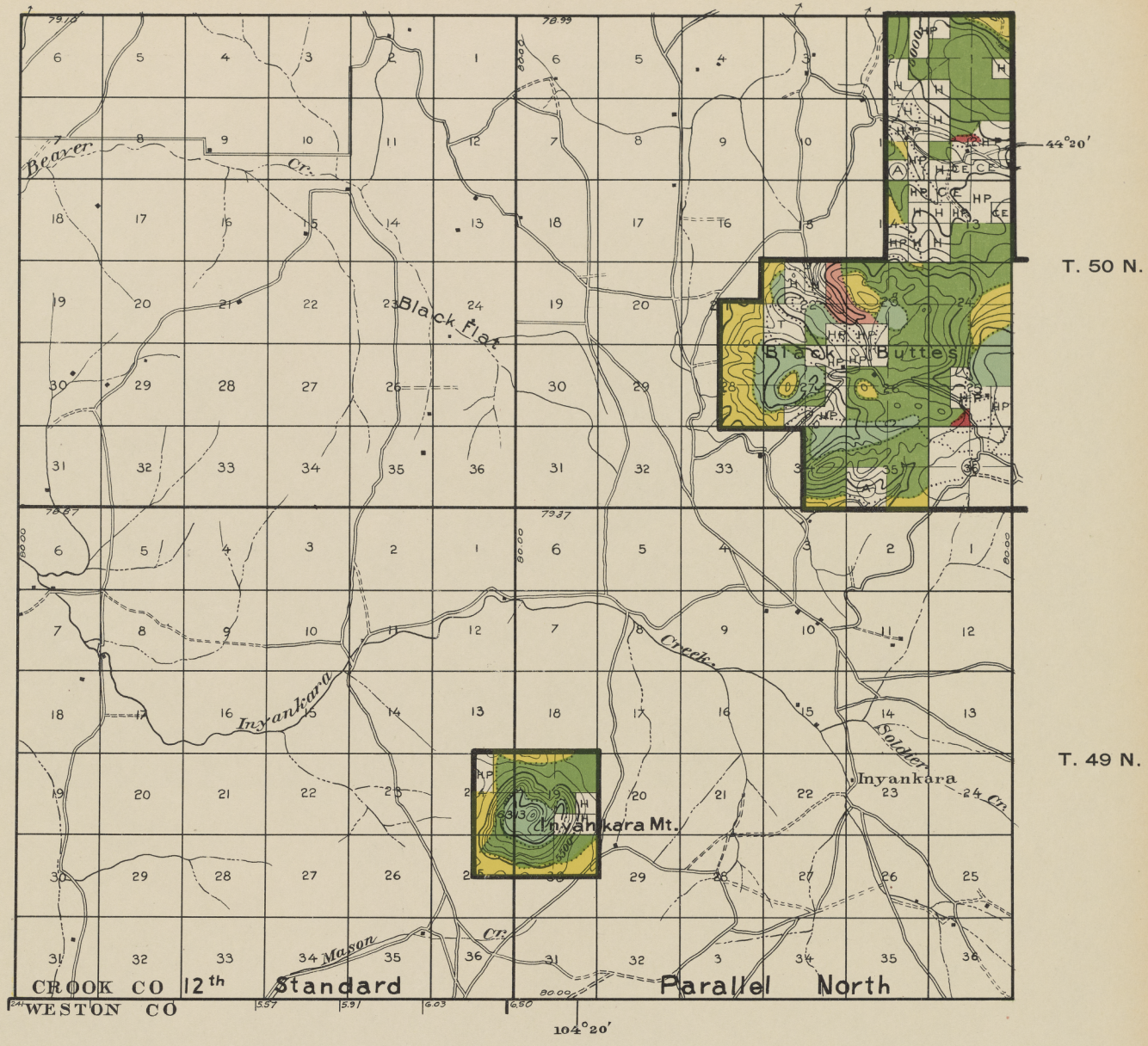
T. 50 N.

COMPILATION  
 Topography from U. S. Geological Survey maps  
 Land lines from General Land Office plats  
 Classification by Forest Service

R. 61 W.

R. 60 W.

OCT., 1908  
**SUNDANCE**



OCT., 1908

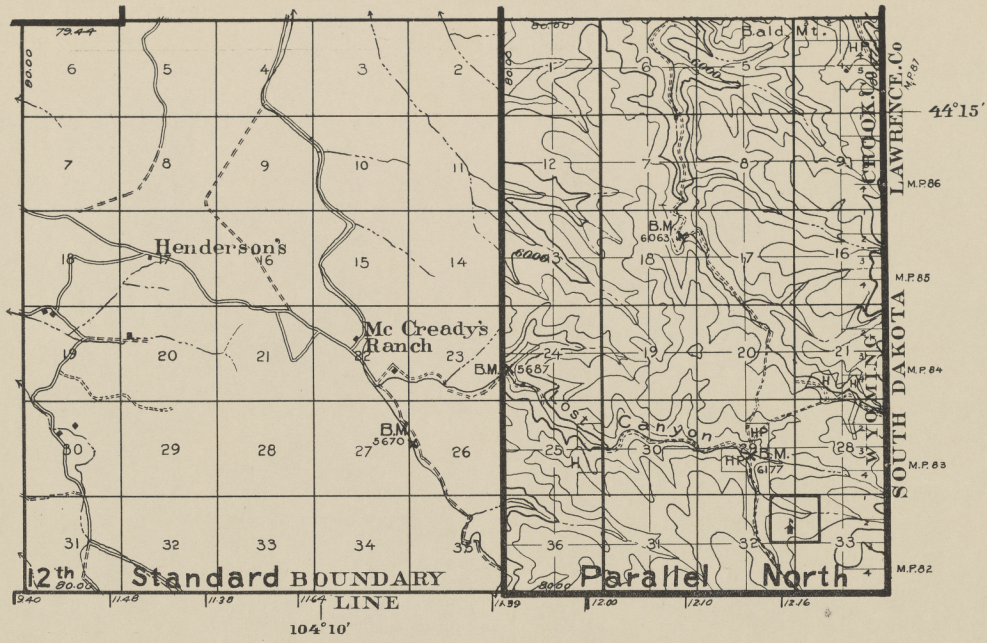
SUNDANCE

R. 63 W.

R. 62 W.

COMPILATION  
 Topography from U. S. Geological Survey maps  
 Land lines from General Land Office plats  
 Classification by Forest Service





T. 49 N.

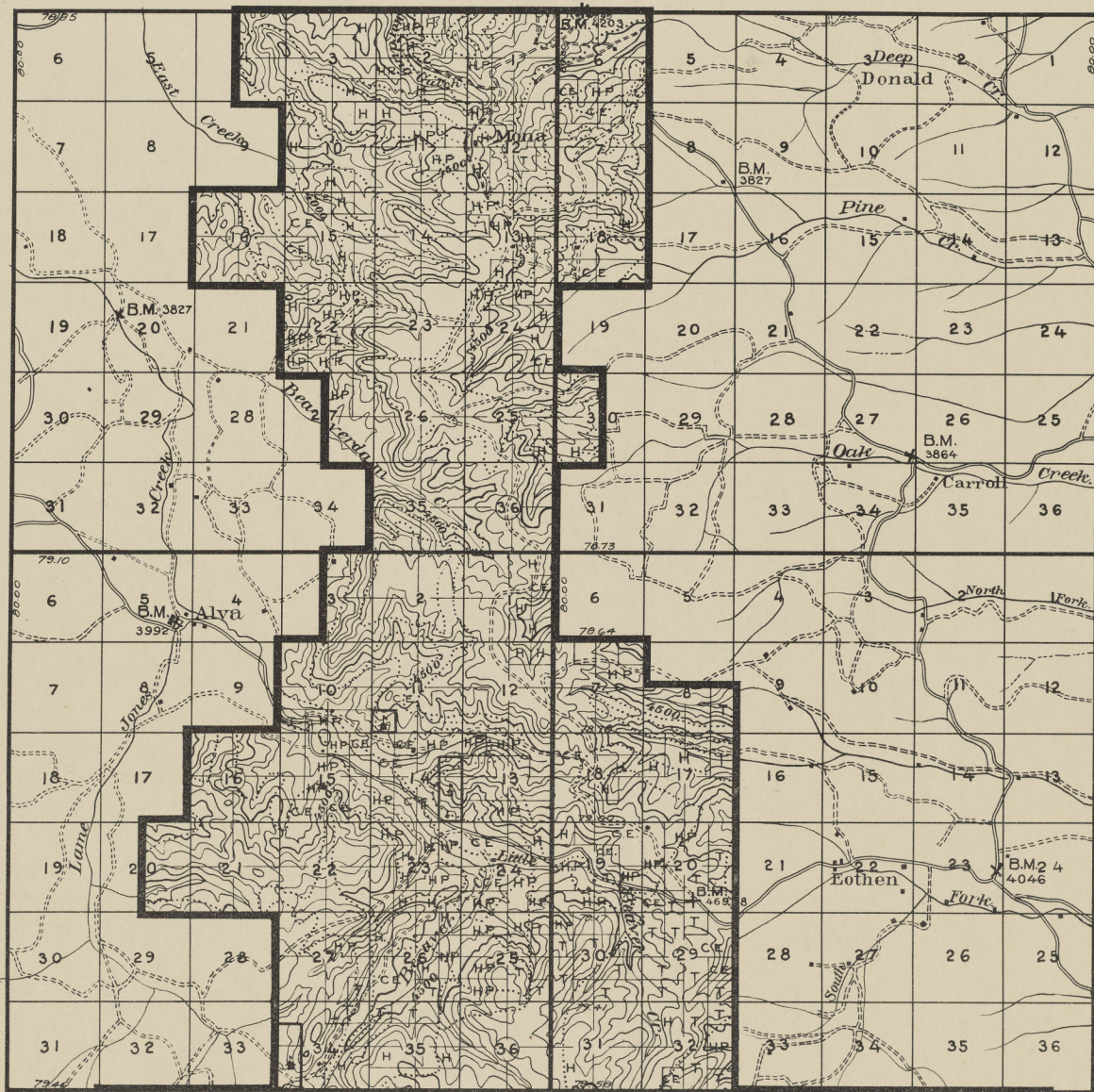
OCT., 1908

COMPILATION  
 Topography from U. S. Geological Survey maps  
 Land lines from General Land Office plats

SUNDANCE

R. 61 W.

R. 60 W.



T. 55 N.

40 40'  
T. 54 N.

COMPILATION  
 Topography from U. S. Geological Survey maps  
 Limit lines from General Land Office plats  
 Classification by Forest Service

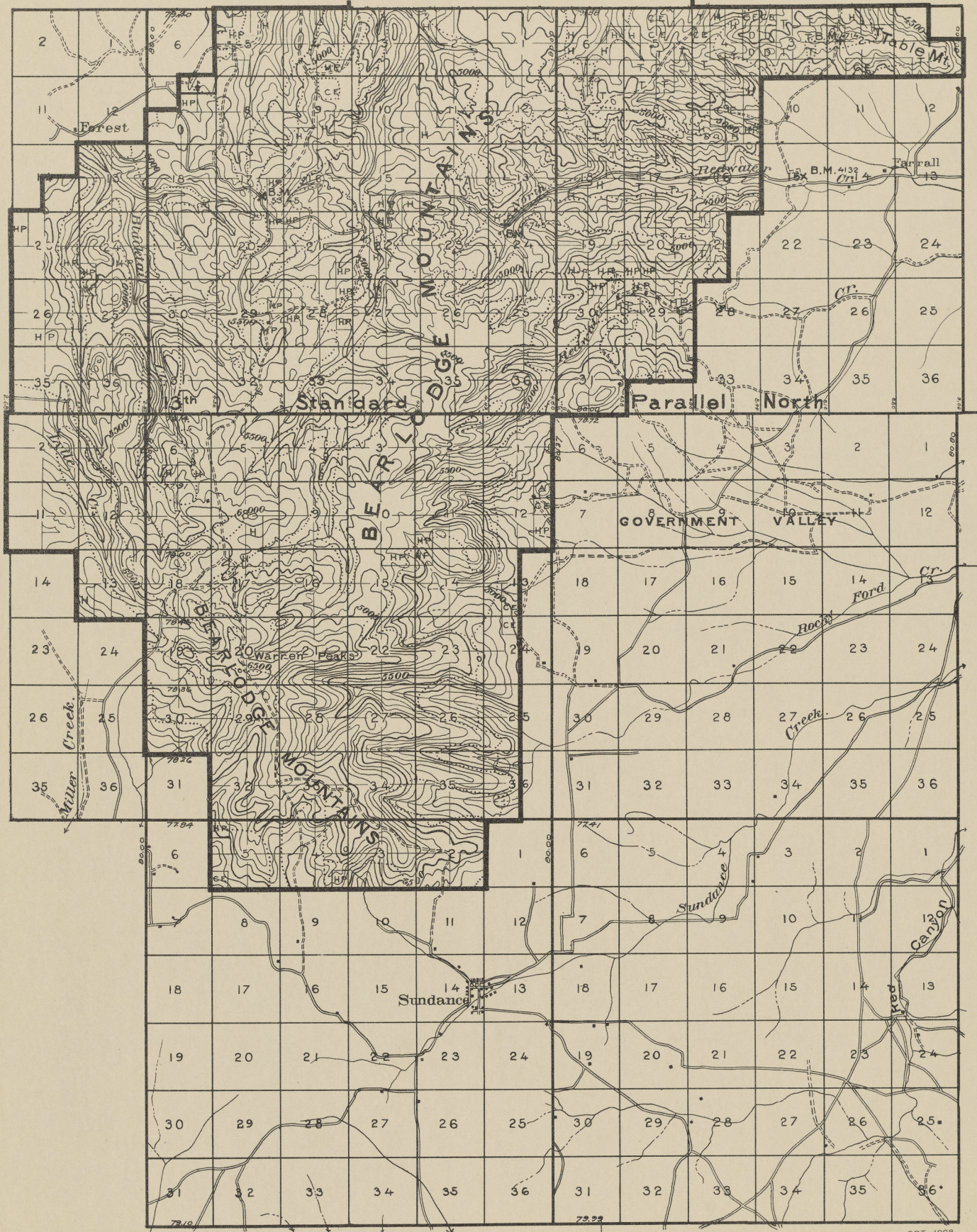
OCT., 1908

104 20'

R. 63 W.

R. 62 W.

SUNDANCE



T. 53 N.

T. 52 N.

T. 51 N.

COMPILED  
 Topography from U. S. Geological Survey maps  
 Land lines from General Land Office plats  
 Classification by Forest Service

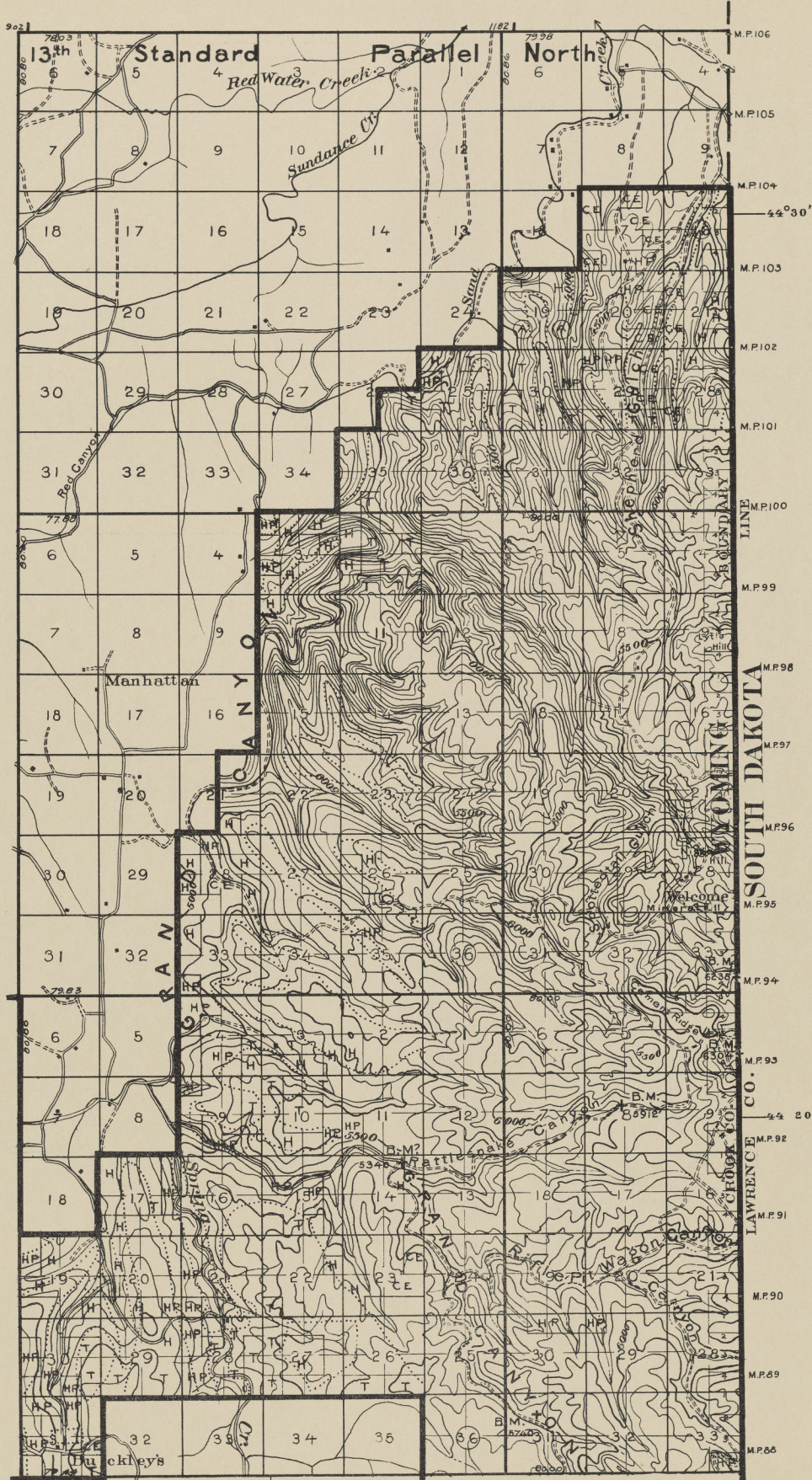
104° 20'

OCT., 1908

SUNDANCE

R. 63 W.

R. 62 W.



T. 52 N.

T. 51 N.

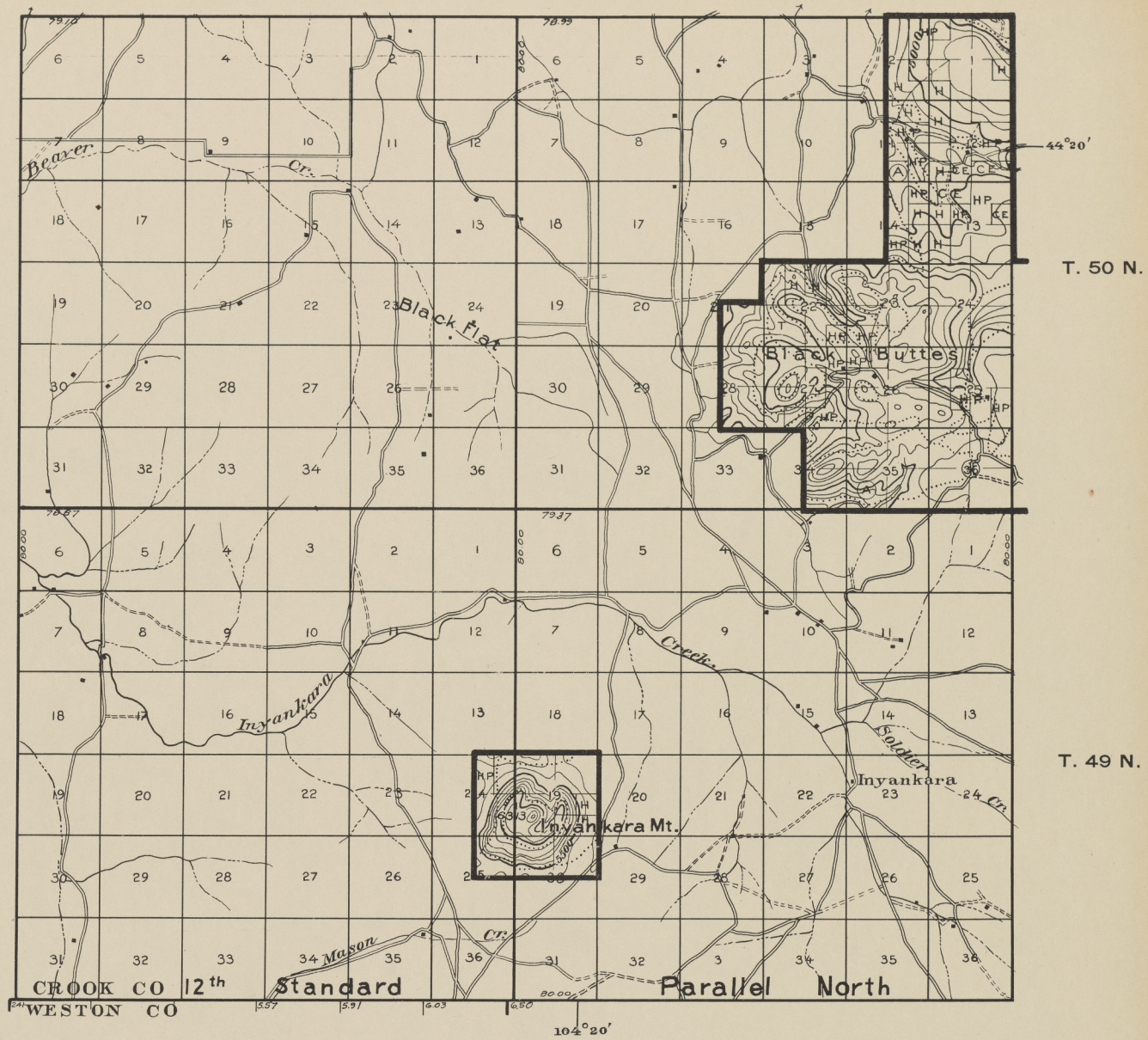
T. 50 N.

COMPILED  
 Topography from U. S. Geological Survey maps  
 Land lines from General Land Office plats  
 Classification by Forest Service

R. 61 W.

R. 60 W.

OCT., 1908  
**SUNDANCE**



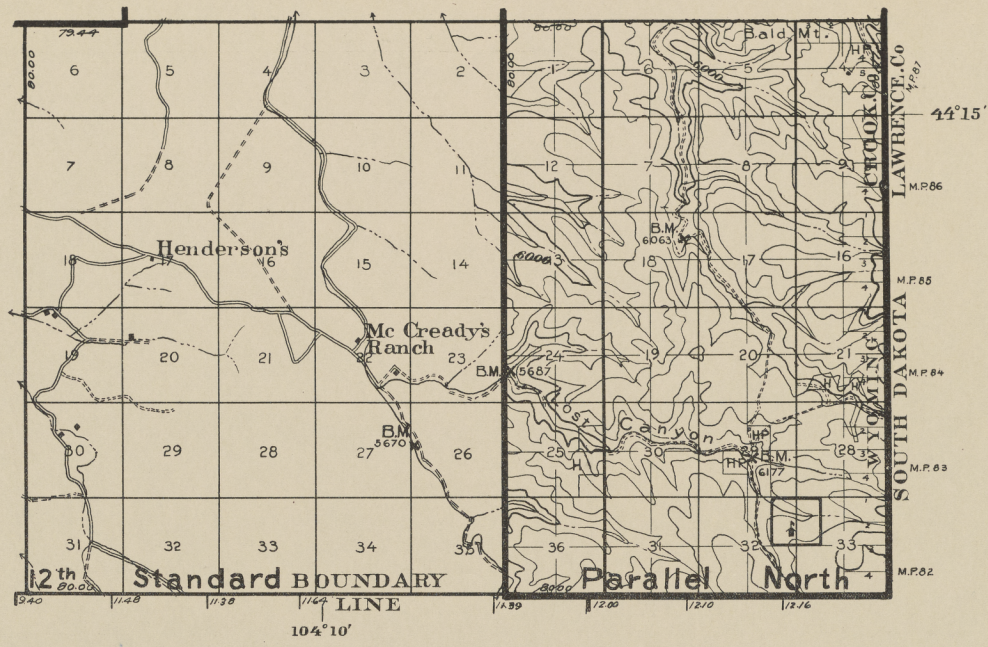
OCT., 1908

SUNDANCE

R. 63 W.

R. 62 W.

COMPILATION  
 Topography from U. S. Geological Survey maps  
 Land lines from General Land Office plats  
 Classification by Forest Service



T. 49 N.

COMPILATION  
 Topography from U. S. Geological Survey maps  
 Land lines from General Land Office plats

OCT., 1908

SUNDANCE

R. 61 W.

R. 60 W.

