

Historic, archived document

Do not assume content reflects current scientific knowledge, policies, or practices.

Score

GREATER SUCCESS

Through these opportunities for profit!

Look ahead to the time when you'll need saleable stock of the varieties shown here. "Get set" for orders you are bound to receive. Scan this folder now and keep thinking, "The man who wins is the man who acts promptly." Act!

Offers for
the Trade Only

THE CONARD-PYLE CO.
Robert Pyle, President WEST GROVE, PA.
Nurserymen Since 1897

Offers for
the Trade Only

LINING-OUT EVERGREENS

The much-heard-of 2¼ in. pot-grown plants
200 of a kind at 1000 Rate

	100	1,000
BUXUS semp. suffruticosa (Truedwarf Box).....	\$7.00	\$60.00
CHAMAECYPARIS laws. alumi (Scarab C.).....	12.00	100.00
JUNIPERUS chinensis (Chinese Juniper).....	15.00	
ch. pfitzeriana (Pfitzer Juniper).....	14.00	120.00
comm. hibernica (Irish Juniper).....	12.00	100.00
depressa plumosa (Plumed Spreading J.).....	20.00	
RETINOSPORA filifera (Thread Retinospora).....	9.00	75.00
obtusa compacta (Football Cypress).....	14.00	120.00
obtusa gracilis (Slender Hinoki Cypress).....	14.00	120.00
pisifera (Sawara Retinospora).....	9.00	75.00
pisifera aurea (Golden Sawara Retinospora).....	9.00	75.00
plumosa (Plume Retinospora).....	10.00	90.00
plumosa aurea (Golden Plume Retinospora).....	10.00	90.00
plumosa lutescens (Dwf. Yel. Pl. Cyp.).....	10.00	90.00
squarrosa veitchii (Veitch Moss Cypress).....	10.00	90.00
TAXUS cuspidata (Spreading Japanese Yew).....	18.00	150.00
cuspidata nana (Dwarf Japanese Yew).....	25.00	
media hicksii (Hicks Yew) See cut.....	25.00	200.00
THUJA occ. compacta (Parsons Arborvitae).....	10.00	90.00
occ. elegantissima (Golden-tipped Arb.).....	10.00	90.00
occ. globosa (American Globe Arborvitae).....	10.00	90.00
occ. lutea (George Peabody Arborvitae).....	10.00	90.00
occ. pumila (Green Globe Arborvitae).....	10.00	90.00
occ. pyramidalis (American Pyr. Arborvitae).....	8.00	75.00
occ. vervaeneana (Vervaena Arborvitae).....	8.00	75.00
occ. wareana (Siberian Arborvitae).....	8.00	75.00



THEY ESTABLISH RECORD FOR ROOTING!

Neatly grown and nicely rooted—two factors which assure you solid satisfaction and unbroken rows.



RESULTS COUNT!!! Pot grown stock, second season field.
THUJA occ. elegantissima in foreground.

Picture
QUICK TURNOVER
with this
RAPID GROWER

THUJA OCC. ELEGANTISSIMA
(Golden-Tipped Arborvitae)

	Lots
	250 and up
8 to 10 in., B. & B.	20c
12 to 15 in., B. & B.	30c

"CHILDREN of a LARGER GROWTH" Pot stock grown one year in field

	100
JUNIPERUS comm. hibernica, 10 to 12 in., B. & B.	\$35.00
virg. glauca, 10 to 12 in., B. & B.	50.00
virg. keteleeri, 10 to 12 in., B. & B.	50.00
virg. smithii, 8 to 10 in., B. & B.	50.00
RETINOSPORA filifera, 8 to 10 in., not B. & B.	15.00
filifera aurea, 6 to 8 in., B. & B.	25.00
obtusa, 8 to 10 in., B. & B.	35.00
obtusa compacta, 10 to 12 in., B. & B.	75.00
obtusa crippei, 10 to 12 in., B. & B.	100.00
obtusa gracilis, 8 to 10 in., B. & B.	35.00
pisifera, 10 to 12 in., B. & B.	25.00
pisifera aurea, 10 to 12 in., B. & B.	25.00
plumosa aurea, 9 to 12 in., B. & B.	25.00
plumosa lutescens, 6 to 8 in., B. & B.	25.00
squarrosa veitchii, 10 to 12 in., B. & B.	25.00
THUJA occ. compacta, 8 to 10 in., B. & B.	25.00
occ. elegantissima, 8 to 10 in., B. & B.	25.00
occ. globosa, 6 to 8 in., B. & B.	25.00
occ. lutea, 4 to 6 in., B. & B.	25.00
occ. pumila, 6 to 8 in., B. & B.	25.00
occ. pyramidalis, 10 to 12 in., B. & B.	25.00
occ. vervaeneana, 8 to 10 in., B. & B.	25.00
occ. wareana, 8 to 10 in., B. & B.	25.00



You'll root
for
their roots!

Tucked snugly into beds of Jersey sand on benches of concrete and slate, these husky little Evergreens began their careers last Fall and from then until late Spring established an endurance record for rooting.

"Re-fueled" in early Summer with fresh, fertilized soil and placed in 2¼-in. pots, they were off again to new glory, but in September, charged with energy, they "came down" to the frames for the Winter rest-period. Here they are to remain until Spring — all of their growing-power sealed for you.

That is the story of these widely-known result-producers. First, reliably rooted; then, reasonably rested. Only from such stock can you secure rows without a miss and positive satisfaction.

Make "hay"—order today

See opportunities inside—real news to money-makers!



JUNIPERUS pfitzeriana
12 to 15 in., B. & B., 50c

For growing on, for small plantings and for sample displays

EVERY EVERGREEN AN OP

... To...
PROVIDE FOR SALES IN T
... Or To...
MAKE AN IMMEDI

**POPULAR
FOR AMATEUR
PLANTINGS**

- JUNIPERUS pfitzeriana
15 to 18 in., B. & B. 75c
- RETINOSPORA pisifera
1½ to 2 ft., B. & B. 50c
- RETINOSPORA pisifera aurea
1 to 1½ ft., B. & B. 35c
- RETINOSPORA plumosa
1½ to 2 ft., B. & B. 75c
- RETINOSPORA plumosa aurea
1½ to 2 ft., B. & B. 75c
- THUJA occ. globosa
9 to 12 in., B. & B. 35c
- THUJA occ. pyramidalis
2 to 2½ in., B. & B. \$1.00

**SAMPLES
for
YOUR DISPLAY
PLOTS**

- RETINOSPORA pisifera
2 to 2½ ft., B. & B. 75c
- RETINOSPORA pisifera aurea
2 to 2½ ft., B. & B. 75c
- RETINOSPORA plumosa
2 to 2½ ft., B. & B. \$1.00
- RETINOSPORA lutescens
10 to 12 in., B. & B. 50c
- RETINOSPORA sq. veitchi
15 to 18 in., B. & B. 75c
- THUJA occ. pumila
15 to 18 in., B. & B. \$1.00
- THUJA pyramidalis
2½ to 3 ft., B. & B. \$1.50

**FOR
MARKET-DAY**

- BUXUS sempervirens
10 to 12 in. 35c
- JUNIPERUS ch. albovariegata
1½ to 2 ft., B. & B. \$1.50
- JUNIPERUS pfitzeriana
12 to 15 in., B. & B. 50c
- RETINOSPORA filifera
15 to 18 in., B. & B. 35c
- RETINOSPORA pisifera
1½ to 2 ft., B. & B. 50c
- RETINOSPORA pisifera aurea
1½ to 2 ft., B. & B. 50c
- RETINOSPORA plumosa
1½ to 2 ft., B. & B. 75c
- RETINOSPORA plumosa aurea
1½ to 2 ft., B. & B. 75c
- RETINOSPORA lutescens
10 to 12 in., B. & B. 50c
- RETINOSPORA sq. veitchi
15 to 18 in., B. & B. 75c
- THUJA occ. compacta
10 to 12 in., B. & B. 50c
(Extra Bushy)
- THUJA occ. pumila
15 to 18 in., B. & B. \$1.00
- THUJA occ. pyramidalis
1½ to 2 ft., B. & B. 75c
- THUJA occ. vervaeneana
2 to 2½ ft., B. & B. \$1.00
- THUJA occ. wareana
15 to 18 in., B. & B. 60c

USEFU

as well as
ORNAMEN

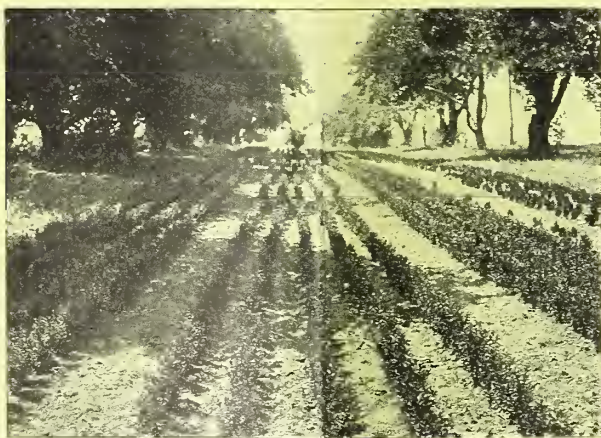


THUJA ("Biota") C
(Yellow Column

- 1½ to 2 ft., B. & B.
- 2 to 2½ ft., B. & B.
- 2½ to 3 ft., B. & B.

ALL SPLENDID SPECIMEN FOR
LIGHT LANDSCAPING FOR F

24 Pages, 21 Illustrations
USEFUL WHOLES
Your Letterhead W



BUXUS sempervirens
10 to 12 in. 100 250 up
50c 35c

These Evergreens are grown in
THE CONA
WEST GE

OPPORTUNITY FOR YOU

To . . .

IN THE YEARS AHEAD

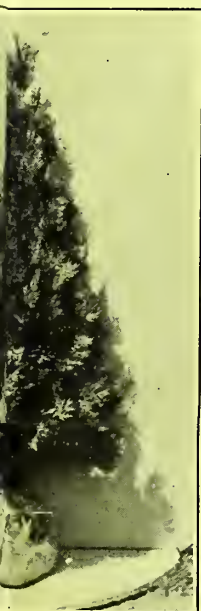
To . . .

IMMEDIATE PROFIT

FUL

ell as

MENTAL



Orientalis Elegantissima
(Common Arborvitae)

.....\$1.00

.....\$1.50

.....\$2.00

PLANTS FOR ROADSIDE SALES,
OR FILLING URNS

ions, Valuable Descriptions

SALE TRADE-LIST

Will Bring You a Copy

a clay-base loam, best for balling

RD-PYLE CO.

GROVE, PA.

OF INTEREST to ROAD STAND OWNERS



RETINOSPORA plumosa
2 to 2½ ft., B. & B.\$1.00

RETINOSPORA lutescens
10 to 12 in., B. & B. 50c

RETINOSPORA sq. veitchi
15 to 18 in., B. & B. 75c

THUJA occ. pyramidalis
2 to 2½ ft., B. & B.\$1.25

THUJA occ. vervaeneana
2 to 2½ ft., B. & B.\$1.00

THUJA wareana
15 to 18 in., B. & B. 60c

THUJA orientalis (Biota)
2½ to 3 ft., B. & B.\$1.50

THUJA orientalis aurea nana
(Biota)
15 to 18 in., B. & B.\$1.25
18 to 21 in., B. & B.\$1.75

THUJA orientalis elegantissima
(Biota)
2 to 2½ ft., B. & B.\$1.50
2½ to 3 ft., B. & B.\$2.00

TSUGA canadensis
1½ to 2 ft., B. & B.\$1.00
2 to 2½ ft., B. & B.\$1.50



THUJA ("Biota") orientalis aurea nana
12 to 15 in., B. & B., \$1.00

Sell for Window Boxes and Urns; Also for Cash and Carry Trade

A LIMITED LIST for GENERAL USE

Your Choice 50c



JUNIPERUS ch. pfitzeriana
12 to 15 in., B. & B.

RETINOSPORA pisifera
1½ to 2 ft., B. & B.

RETINOSPORA pisifera aurea
1½ to 2 ft., B. & B.

THUJA occ. elegantissima
15 to 18 in., B. & B.

THUJA occ. pyramidalis
1 to 1½ ft., B. & B.

THUJA occ. vervaeneana
15 to 18 in., B. & B.

HEDGE PLANT

Par Excellence!



TSUGA canadensis

(Canada Hemlock)

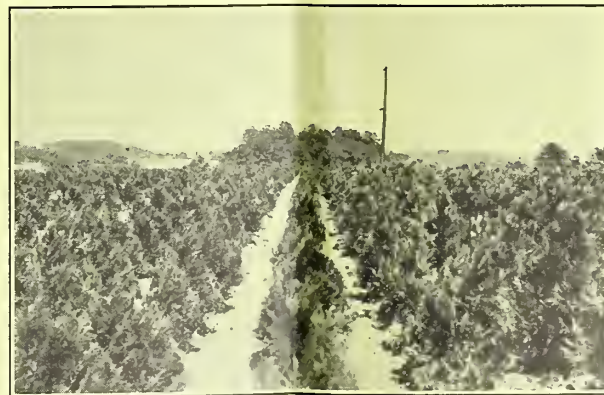
15 to 18 in., B. & B. 75c

1½ to 2 ft., B. & B.\$1.00

2 to 2½ ft., B. & B.\$1.50



SET THE PLANTS SO
THAT THEY TOUCH
AT PLANTING TIME



Retinospora pisifera aurea

1 to 1½ ft., B. & B., 35c

1½ to 2 ft., B. & B., 50c

EVERY EVERGREEN AN OPPORTUNITY FOR YOU

... To ...
 PROVIDE FOR SALES IN THE YEARS AHEAD
 ... Or To ...
 MAKE AN IMMEDIATE PROFIT



JUNIPERUS pfitzeriana
 12 to 15 in., B. & B., 50c

For growing on, for small plantings and for sample displays

POPULAR FOR AMATEUR PLANTINGS

- JUNIPERUS pfitzeriana 15 to 18 in., B. & B. 75c
- RETINOSPORA pisifera 1½ to 2 ft., B. & B. 50c
- RETINOSPORA pisifera aurea 1 to 1½ ft., B. & B. 35c
- RETINOSPORA plumosa 1½ to 2 ft., B. & B. 75c
- RETINOSPORA plumosa aurea 1½ to 2 ft., B. & B. 75c
- THUJA occ. globosa 9 to 12 in., B. & B. 35c
- THUJA occ. pyramidalis 2 to 2½ in., B. & B. \$1.00

SAMPLES for YOUR DISPLAY PLOTS

- RETINOSPORA pisifera 2 to 2½ ft., B. & B. 75c
- RETINOSPORA pisifera aurea 2 to 2½ ft., B. & B. 75c
- RETINOSPORA plumosa 2 to 2½ ft., B. & B. \$1.00
- RETINOSPORA lutescens 10 to 12 in., B. & B. 50c
- RETINOSPORA sq. veitchi 15 to 18 in., B. & B. 75c
- THUJA occ. pumila 15 to 18 in., B. & B. \$1.00
- THUJA pyramidalis 2½ to 3 ft., B. & B. \$1.50



BUXUS sempervirens
 100 250 up
 10 to 12 in. 50c 35c

FOR MARKET-DAY

- BUXUS sempervirens 10 to 12 in. 35c
- JUNIPERUS ch. albovariegata 1½ to 2 ft., B. & B. \$1.50
- JUNIPERUS pfitzeriana 12 to 15 in., B. & B. 50c
- RETINOSPORA filifera 15 to 18 in., B. & B. 35c
- RETINOSPORA pisifera 1½ to 2 ft., B. & B. 50c
- RETINOSPORA pisifera aurea 1½ to 2 ft., B. & B. 50c
- RETINOSPORA plumosa 1½ to 2 ft., B. & B. 75c
- RETINOSPORA plumosa aurea 1½ to 2 ft., B. & B. 75c
- RETINOSPORA lutescens 10 to 12 in., B. & B. 50c
- RETINOSPORA sq. veitchi 15 to 18 in., B. & B. 75c
- RETINOSPORA lutescens 10 to 12 in., B. & B. 50c
- RETINOSPORA sq. veitchi 15 to 18 in., B. & B. 75c
- THUJA occ. compacta 10 to 12 in., B. & B. 50c (Extra Bushy)
- THUJA occ. pumila 15 to 18 in., B. & B. \$1.00
- THUJA occ. pyramidalis 1½ to 2 ft., B. & B. 75c
- THUJA occ. vervaeneana 2 to 2½ ft., B. & B. \$1.00
- THUJA occ. wareana 15 to 18 in., B. & B. 60c

USEFUL as well as ORNAMENTAL



THUJA ("Biota") Orientalis Elegantissima
 (Yellow Column Arborvitae)

- 1½ to 2 ft., B. & B. \$1.00
- 2 to 2½ ft., B. & B. \$1.50
- 2½ to 3 ft., B. & B. \$2.00

ALL SPLENDID SPECIMENS FOR ROADSIDE SALES,
 LIGHT LANDSCAPING OR FILLING URNS

24 Pages, 21 Illustrations, Valuable Descriptions
USEFUL WHOLESALE TRADE-LIST
 Your Letterhead Will Bring You a Copy

OF INTEREST to ROAD STAND OWNERS

- RETINOSPORA plumosa 2 to 2½ ft., B. & B. \$1.00
- RETINOSPORA lutescens 10 to 12 in., B. & B. 50c
- RETINOSPORA sq. veitchi 15 to 18 in., B. & B. 75c
- THUJA occ. pyramidalis 2 to 2½ ft., B. & B. \$1.25
- THUJA occ. vervaeneana 2 to 2½ ft., B. & B. \$1.00
- THUJA wareana 15 to 18 in., B. & B. 60c
- THUJA orientalis (Biota) 2½ to 3 ft., B. & B. \$1.50
- THUJA orientalis aurea nana (Biota) 15 to 18 in., B. & B. \$1.25 18 to 21 in., B. & B. \$1.75
- THUJA orientalis elegantissima (Biota) 2 to 2½ ft., B. & B. \$1.50 2½ to 3 ft., B. & B. \$2.00
- TSUGA canadensis 1½ to 2 ft., B. & B. \$1.00 2 to 2½ ft., B. & B. \$1.50



THUJA ("Biota") orientalis aurea nana
 12 to 15 in., B. & B., \$1.00

Sell for Window Boxes and Urns; Also for Cash and Carry Trade

A LIMITED LIST for GENERAL USE

Your Choice 50c

- JUNIPERUS ch. pfitzeriana 12 to 15 in., B. & B.
- RETINOSPORA pisifera 1½ to 2 ft., B. & B.
- RETINOSPORA pisifera aurea 1½ to 2 ft., B. & B.
- THUJA occ. elegantissima 15 to 18 in., B. & B.
- THUJA occ. pyramidalis 1 to 1½ ft., B. & B.
- THUJA occ. vervaeneana 15 to 18 in., B. & B.

HEDGE PLANT Par Excellence!

TSUGA canadensis
 (Canada Hemlock)

- 15 to 18 in., B. & B. 75c
- 1½ to 2 ft., B. & B. \$1.00
- 2 to 2½ ft., B. & B. \$1.50

SET THE PLANTS SO THAT THEY TOUCH AT PLANTING TIME



Retinospora pisifera aurea

- 1 to 1½ ft., B. & B., 35c
- 1½ to 2 ft., B. & B., 50c

These Evergreens are grown in a clay-base loam, best for balling
THE CONARD-PYLE CO.
 WEST GROVE, PA.



AMONG THE RARER JUNIPERS

JUNIPERUS depressa plumosa
2¼-in. pots 20c

JUNIPERUS virg. burki
2¼-in. pots 25c
1 to 1½ ft., B. & B.\$1.50

TO GET ACQUAINTED WITH THESE

See descriptions in trade list
or better still order a few sam-
ples to plant where you can
study them conveniently.

JUNIPERUS virg. keteleeri
2¼-inch pots 25c
10 to 12 in., B. & B. 50c
1½ to 2 ft., B. & B.\$1.50

JUNIPERUS virg. smithi
2¼-in. pots 25c
8 to 10 in., B. & B. 50c
1 to 1½ ft., B. & B.\$1.50



Berckman's Golden

SELLS
WITHOUT YOUR EFFORT
when well-displayed
in urns or tubs

THUJA ("Biota") ORIENT. AUREA NANA (*Berckman's Golden*)

10 to 12 in., B. & B. 75c
12 to 15 in., B. & B.\$1.00
15 to 18 in., B. & B.\$1.25
18 to 21 in., B. & B.\$1.75

To enrich ROCKERIES

Suggest these

RETINOSPORA obtusa
compacta
10 to 12 in., B. & B. 75c

TAXUS cuspidata nana
(brevifolia)
2¼-in. pots (to grow on).... 25c

THUJA occ. compacta
(*Parsons Arborvitae*)
10 to 12 in., B. & B. 35c
10 to 12 in., B. & B. 50c
(*Extra Bushy*)

THUJA occ. globosa
9 to 12 in., B. & B. 35c

THUJA orient. aurea nana
(*Berckman's*)
10 to 12 in., B. & B. 75c
12 to 15 in., B. & B.\$1.00
15 to 18 in., B. & B.\$1.25

EVERGREENS FOR WINDOW-BOXES

Offer



THUJA occ. pyramidalis

BUXUS sempervirens. <i>Common Box</i>	100	1,000
10 to 12 in.	\$50.00	\$350.00
1½ to 2 ft., B. & B.	150.00	
JUNIPERUS comm. hibernica. <i>Irish Juniper</i>		
10 to 12 in., B. & B.	35.00	
1½ to 2 ft., B. & B.	100.00	
RETINOSPORA plumosa. <i>Plume Retinospora</i>		
1 to 1½ ft., B. & B.	50.00	
RETINOSPORA plumosa aurea. <i>Golden Plume Ret.</i>		
12 to 15 in., B. & B.	35.00	
15 to 18 in., B. & B.	50.00	
THUJA occ. pyramidalis. <i>Amer. Pyr. Arb.</i>		
1 to 1½ ft., B. & B.	50.00	
THUJA (biota) orient. aurea nana. <i>Berckman's</i>		
12 to 15 in., B. & B.	100.00	
15 to 18 in., B. & B.	125.00	
TSUGA canadensis. <i>Canada Hemlock</i>		
15 to 18 in., B. & B.	75.00	

EXTRA PROFIT EASILY

through

Evergreens for Window-Boxes and Urns

Folks ready to replace Geraniums

Summer's flowers have flown. Your folks feel the need
for sturdier stock. Theirs the boxes. Yours the plants
and the profit!

Evergreens brighten dreary days ahead

You suggest Evergreens. Like winter sunshine will they
enrich and beautify spots otherwise drab and unsightly.
Friends gained!

Stock can be set to lawn in Spring

Press the point that Evergreens can be transplanted to
lawn or garden when April comes. Thus will they provide
all-year service. Follows a reliable list—what choose ye?

MAIL YOUR ORDER

... to ...

The CONARD-PYLE Co.

WEST GROVE, PA.

Robert Pyle, President
Nurserymen Since 1897

Offers
for the trade only
and subject to
prior sale

Prices F. O. B.
West Grove, Pa.
Packing free for cash
with order



