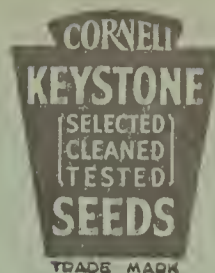


Historic, archived document

Do not assume content reflects current scientific knowledge, policies, or practices.



WHOLESALE PRICE LIST



of Keystone Vegetable Seeds

Quotations for prompt Order, Immediate or Later Shipment

— from —

CORNELI SEED COMPANY

WHOLESALE SEEDSMEN

Office and Warehouse
101 Chouteau Ave.
St. Louis, Mo.

Trial Grounds
Keystone Valley Farm
St. Louis County

St. Louis, Mo.

JULY 20, 1937

CONDITIONS OF SALE: This list cancels all previous quotations.

These prices are for prompt acceptance, subject to prior sale and our further confirmation, and to change without notice.

Prices are f. o. b. St. Louis, Mo. When seamless or heavy cotton bags, boxes or barrels are necessary for safe transportation, they will be charged at cost and are not returnable.

NO CHARGE will be made for light inside cotton bags used in packing garden and flower seeds.

TERMS: Garden and flower seeds 2 per cent for cash in 10 days, net 60 days to firms of approved credit; otherwise C. O. D. or sight draft less 2%. Other items net cash.

NOTICE: The total quantity of a species ordered for one shipment will determine the price of each variety within the species. Beans and Peas are considered as one species. Beets, Mangels, Swiss Chard and Sugar Beets are considered as one species. Turnips and Rutabaga are considered as one species. **For Example:** If one bag each of ten varieties of Beans and Peas are ordered for one shipment the price for "10 to 300 Bags" will apply.

Varieties ordered in less than bag lots will be charged at the prices listed for the quantity and variety. Prices on larger quantities upon request.

We give no warranty, express or implied as to description, quality, productiveness, or any other matter of any seeds, bulbs or plants we send out, and we will not be in any way responsible for the crop. CORNELI SEED COMPANY

BEANS

Western Grown—Selected—Field Rogued—Hand Picked

Green Pod Dwarf (120 lbs. per bag)

	Note: 10 bag lots 1/2¢ less			
	Full Bag Lots Per Lb.	30 to 119 Lbs. Per Lb.	10 to 29 Lbs. Per Lb.	1 to 9 Lbs. Per Lb.
Black Valentine	\$.08	\$.09	\$.10	\$.11
Black Valentine Stringless	.09 1/2	.10 1/2	.11 1/2	.12
Bountiful	.09	.10	.11	.12
Burpee's Stringless Green Pod	.09	.10	.11	.12
Dwarf Horticultural	.09 1/2	.10 1/2	.11 1/2	.13
Full Measure	.10	.11	.12	.13
Giant Stringless Green Pod	.09	.10	.11	.12
Keystone Valley Stringless	.10 1/2	.11 1/2	.12 1/2	.13
Landreth Stringless	.09	.10	.11	.12
Longfellow	.08	.09	.10	.11
Red Valentine	.09	.10	.11	.12
Red Valentine Stringless	.09 1/2	.10 1/2	.11	.12
Rogers Stringless Refugee	.10	.11	.12	.13
Tendergreen	.10 1/2	.11 1/2	.12 1/2	.13
Tennessee Green Pod	.09	.10	.11	.12

Field Beans (Hand Picked)

Great Northern	.09 1/2	.10 1/2	.11	.12
Michigan Navy	.10	.11	.12	.13
Pinto Beans	.08	.09	.10	.11
Red Kidney	.12	.13	.14	.15
White Kidney				
White Marrow	.11	.12	.13	.14

Wax Pod Dwarf

Black Wax (Pencil Pod)	.12 1/2	.13 1/2	.14	.15
Brittle Wax (Round Pod Kidney Wax)	.15	.16	.17	.18
Currie's Rust Proof Black Wax	.08 1/2	.09 1/2	.10 1/2	.11
Davis' White Kidney Wax	.09 1/2	.10 1/2	.11 1/2	.12
Improved Golden Wax	.15	.16	.17	.18
Sure Crop Wax	.09 1/2	.10 1/2	.11	.12
Wardwell's Kidney Wax	.10	.11	.12	.13
Unrivaled Wax	.10 1/2	.11 1/2	.12 1/2	.13
Improved Stringless Kidney Wax	Sold Out			

Dwarf Lima Beans

Burpee's Large Bush Lima	.13	.14	.15	.16
Burpee's Improved Bush Lima	.13 1/2	.14 1/2	.15	.16
FORDHOOK BUSH LIMA	.15	.16	.17	.18
Henderson's Bush Lima	.10	.11	.12	.13
Jackson Wonder Speckled	.12	.13	.14	.15
McCrea's Lima	.14	.15	.16	.17
Woods Prolific	.09 1/2	.10 1/2	.11 1/2	.12

Pole Beans

Burger's Stringless (Wh. Seed Ky. Won.)	.09 1/2	.10 1/2	.11 1/2	.12
Dutch Caseknife		.13	.14	.15
Golden Cluster Wax	.11 1/2	.12 1/2	.13	.14
Ideal Market	.09 1/2	.10 1/2	.11 1/2	.13
Kentucky Wonder	.09	.10	.11	.12
Kentucky Wonder Wax	.11 1/2	.12 1/2	.13	.14
Lazy Wife	.09	.10	.11	.12
London Horticultural	.08	.09	.10	.11
McCaslan	.08 1/2	.09 1/2	.10	.11
Missouri Wonder	.09 1/2	.10 1/2	.11 1/2	.13
Red Speckled Cut Short	.10 1/2	.11 1/2	.12	.13
St. Louis Perfection White	.09 1/2	.10 1/2	.11 1/2	.12
Scarlet Runner				
Striped Creaseback	.09	.10	.11	.12
Tennessee Wonder (Egg Harbor)	.09	.10	.11	.12
White Cornfield, Improved	.09 1/2	.10 1/2	.11 1/2	.12
White Creaseback	.09 1/2	.10 1/2	.11 1/2	.12
Yardlong	.25	.26	.27	.28

Pole Lima Beans

Florida Butter Speckled	.13	.14	.15	.16
King of the Garden Lima	.12 1/2	.13 1/2	.14	.15
Large Speckled or Christmas Lima				
Large White Lima or Butter	.12 1/2	.13 1/2	.14	.15
Small White Lima or Sieva	.09 1/2	.10 1/2	.11	.12

SWEET CORN

White Varieties (100 lbs. per bag)

Note: 10 bag lots 1/2¢ less

	Full Bag Lots Per Lb.	10 to 99 Lbs. Per Lb.	1 to 9 Lbs. Per Lb.
Black Mexican	\$.09	\$.10	\$.11
Country Gentleman	.08 1/2	.09 1/2	.10
Early Minnesota	.08	.09	.10
Early Evergreen	.09	.10	.11
Howling Mob	.09	.10	.11
Long Island Beauty	.09	.10	.11
Mammoth Late Sugar	.10	.11	.12
Narrow Grain Evergreen	.10 1/2	.11 1/2	.12
Oregon Evergreen (Resistant to Ear-Worms)	.11	.12	.13
Stowell's Evergreen	.09	.10	.11
Stowell's Evergreen (Canner Strain)	.09 1/2	.10 1/2	.12
Vanguard	.09 1/2	.10 1/2	.11
Whipple's Early White	.09	.10	.11

Yellow Varieties (100 lbs. per bag)

Golden Bantam (8 row)	.08	.09	.10
Golden Country Gentleman (Golden Colonel)	.12	.13	.14
Golden Sunshine	.08 1/2	.09 1/2	.10
Whipple's Yellow	.07 3/4	.08 3/4	.10
Wonder Bantam, Barden's (8 row)	.08 1/2	.09 1/2	.10
Golden Evergreen	.08 1/2	.09 1/2	.10
Golden Cross Bantam, Hybrid	.21	.22	.23
Golden Giant	.09	.10	.11

Early White Table Varieties (112 lbs. per bag)

Early Adams	.06	.07	.08
Extra Early Adams	.06 1/2	.07 1/2	.08
Early Table	.08	.09	.10
Snowflake	.06	.07	.08
Trucker's Favorite	.06 1/2	.07 1/2	.08

GARDEN PEAS

Wrinkled Varieties Marked *

(Wrinkled Peas, 112 lbs., Smooth Peas, 120 lbs. per bag)

Extra Early and Early Varieties

	Full Bag Lots Per Lb.	30 Lbs. & over Per Lb.	10 to 29 Lbs. Per Lb.	1 to 9 Lbs. Per Lb.
Note: 10 bag lots 1/2¢ less				
Aiaska Wilt Resistant	.06	.07	.08	.09
Ameer (Claudit, Mam. Pod Alaska)	.08	.09	.10	.11
*American Wonder	.08 1/2	.09 1/2	.10 1/2	.12
Dwarf Tom Thumb	.12	.13	.14	.15
First and Best	.08	.09	.10	.11
*Gradus	.07 1/2	.08 1/2	.09 1/2	.10
*Hundredfold	.08 1/2	.09 1/2	.10 1/2	.11
*Laxtonian	.08 1/2	.09 1/2	.10 1/2	.11
*Laxton's Progress	.08 1/2	.09 1/2	.10 1/2	.11
Laxton's Superb (Early Bird)	.09	.10	.11	.12
*Little Marvel	.08	.09	.10	.11
Mammoth Pod Extra Early	.11 1/2	.12 1/2	.13 1/2	.15
*Nott's Excelstor	.08	.09	.10	.11
*Premium Gem (Little Gem)	.08 1/2	.09	.10	.11
*Premium Gem, Wilt Resistant	.08	.09	.10	.11
*Sutton's Excelstor	.08	.09	.10	.11
*Thomas Laxton	.08	.09	.10	.11
*Two Hundredfold	.09	.10	.11	.12
*World's Record	.07 1/2	.08 1/2	.09 1/2	.10

Second Early and Late

*Alderman	.08 1/2	.09 1/2	.10 1/2	.11
*Bliss Everbearing	.09	.10	.11	.12
*Champion of England	.09	.10	.11	.12
*Dwarf Alderman				
Dwarf Gray Sugar, Edible Pods	.10	.11	.12	.13
*Dwarf Telephone	.08 1/2	.09 1/2	.10 1/2	.11
Tall Melting Sugar, Edible Pods	.11	.12	.13	.14
*Telephone	.08 1/2	.09 1/2	.10 1/2	.11
White Marrowfat, Large	.07	.08	.09	.10

Field Peas

Brown Sugar Crowder	.09	.10	.11	.12
California Black Eye	.08	.09	.10	.11
Canadian, Yellow	.05 1/2	.06 1/2	.07 1/2	.09
White Lady	.13	.14	.15	.16

CONTRACT PRICES: Send in your list of Spring Garden Seed requirements now, for quotations.

ASPARAGUS

Mary Washington (Rust resistant)	Per Lb.	\$0.45
Palmetto		.55

BEETS

	25 to 49 Lbs.	5 to 24 Lbs.	1 to 4 Lbs.
	Per Lb.	Per Lb.	Per Lb.
Crimson Globe	\$ 0.28	\$ 0.30	\$ 0.33
Crosby's Egyptian	.28	.30	.33
Detroit Dark Red	.28	.30	.33
Detroit Dark Red, Perfected (excellent canner)	.30	.32	.35
Early Blood Turnip	.30	.32	.35
Early Eclipse	.28	.30	.33
Early Wonder	.26	.28	.31
Edmand's Blood Turnip	.30	.32	.35
Extra Early Egyptian Dark Red	.31	.33	.36
Long Smooth Blood Red	.30	.32	.35
Nuttings Gem	.28	.30	.33
Strawberry Crosby (Light Red)		.23	.26
Swiss Chard, Com. Green (Spinach Beet)	.21	.23	.26
Swiss Chard (Lucullus)	.25	.27	.30
Swiss Chard, French Dark Green, Broad Wh. Rib	.23	.25	.28

Sugar Beets and Mangel Wurzel

Golden Tankard	\$ 0.19	\$ 0.21	\$ 0.24
Mammoth Long Red	.19	.21	.24
Vilmourin's Improved White Sugar	.20	.22	.25
Glant Half Sugar, Rose	.19	.21	.24

BROCCOLI

	10 to 99 Lbs.	5 to 9 Lbs.	1 to 4 Lbs.
	Per Lb.	Per Lb.	Per Lb.
Italian Green Sprouting	\$ 1.25	\$ 1.30	\$ 1.40
Extra Early Propagano	1.35	1.40	1.50

BRUSSELS SPROUTS

Paris Half Dwarf	\$ 0.85	\$ 0.90	\$ 1.00
Long Island Improved	.95	1.00	1.10

CABBAGE

	25 to 99 Lbs.	5 to 24 Lbs.	1 to 4 Lbs.
	Per Lb.	Per Lb.	Per Lb.
(100 lbs. or more, 2 cents less)			
All Head Early	\$ 0.72	\$ 0.75	\$ 0.80
All Seasons	.92	.95	1.00
Charleston Wakefield	1.12	1.15	1.20
Copenhagen Market (Select Holland)	.97	1.00	1.05
Copenhagen Market (Danish)	1.00	1.03	1.08
Copenhagen Market (Extra Select Danish)	1.22	1.25	1.30
Corneli's Late Flat Dutch	.85	.88	.93
Danish Ball Head, Short Stem (Danish Crown)	.90	.93	.98
Early Drumhead	.72	.75	.80
Early Dwarf Flat Dutch	.77	.80	.85
Early Dwarf Ulm Savoy	.77	.80	.85
Early Jersey Wakefield	1.12	1.15	1.20
Glory of Enkhulzen (Originator's Stock)	.67	.70	.75
Golden Acre (Select Holland)	.95	.98	1.03
Golden Acre (Danish)	1.02	1.05	1.10
Golden Acre (Extra Select Danish)	1.75	1.80	1.85
Large Late Drumhead	.80	.83	.88
Late St. Louis Market	.80	.83	.88
Perfection Late Drumhead, Savoy	.72	.75	.80
Premium Late Flat Dutch	.72	.75	.80
Steins Early Flat Dutch	.70	.73	.78

Yellows Resistant Varieties

All Head Early	\$ 2.50	\$ 2.55	\$ 2.60
All Seasons	2.05	2.10	2.15
Golden Acre	2.50	2.55	2.60
Marion Market	2.00	2.05	2.10
Wis. Hollander No. 8	1.50	1.55	1.60

Red Cabbage

Early Blood or Dark Red Erfurt Early	\$ 1.00	\$ 1.03	\$ 1.08
Keystone Red Rock Med. Early	1.50	1.53	1.58
Mammoth Red Rock (Danish) Late	1.22	1.25	1.30
Mammoth Dark Red (Danish) Late	1.22	1.25	1.30

Chinese Cabbage

Wong Bok	\$ 0.55	\$ 0.58	\$ 0.63
Chihli	.60	.63	.68
Pe Tsai	.52	.55	.60

CARROTS

	25 to 99 Lbs.	5 to 24 Lbs.	1 to 4 Lbs.
	Per Lb.	Per Lb.	Per Lb.
(100 lbs. or more, 3 cents less)			
Chantenay	\$ 0.30	\$ 0.32	\$ 0.35
Chantenay Coreless	.32	.34	.37
Chantenay Red Core	.30	.32	.35
Chantenay Long Type (Perfection)	.30	.32	.35
Corneli's Coreless	.35	.37	.40
Danver's Half Long	.30	.32	.35
Danver's Red Core	.33	.35	.38
Imperator	.33	.35	.38
Improved Long Orange	.35	.37	.40
Nantes	.38	.40	.43
Ox Heart or Guerande	.35	.37	.40
White Belgian	.35	.37	.40

CAULIFLOWER

	1 to 4 Lbs.
	Per Lb. Per Oz.
Denmark	
Early Snowball—Extra Select	\$ 9.00 \$ 0.90
Danish Glant, Dry Weather	11.00 1.10
Earliest Dwarf Erfurt, Extra Select	9.00 .90
Super Snowball—Madsen	16.00 1.60

CELERY

	25 to 99 Lbs.	5 to 24 Lbs.	1 to 4 Lbs.
	Per Lb.	Per Lb.	Per Lb.
Easy Blanching	1.25	1.30	1.35
Florida Golden	2.90	2.95	3.00
Glant Pascal	1.00	1.05	1.10
Golden Plume	2.50	2.55	2.60
Golden Self Blanching (Dwarf)	1.50	1.55	1.60
Utah Pascal	1.05	1.10	1.15
White Plume	1.00	1.05	1.10
Celeriac, Turnip Rooted Celery	.95	1.00	1.05
Old Seed (for flavoring)	.42	.45	.50

COLLARDS

	25 to 99 Lbs.	5 to 24 Lbs.	1 to 4 Lbs.
	Per Lb.	Per Lb.	Per Lb.
(100 lbs. 2 cents less)			
Cabbage	\$ 0.22	\$ 0.24	\$ 0.26
Georgia	.21	.23	.25
Blue Stem	.22	.24	.26

CORN SALAD

	10 to 24 Lbs.	1 to 9 Lbs.
	Per Lb.	Per Lb.
Large Leaved	\$ 0.65	\$ 0.70

CUCUMBERS

Varieties listed in Capitals can be supplied in 1-pound Keystone cotton bags, sealed with lead seal at the regular 1 to 4 pound price. (100 lbs. or more, bulk, 2 cents less)

	25 to 99 Lbs.	5 to 24 Lbs.	1 to 4 Lbs.
	Per Lb.	Per Lb.	Per Lb.
Arlington White Spine	\$ 0.37	\$ 0.39	\$ 0.42
BLACK DIAMOND (STAY GREEN)	.35	.37	.40
Boston Pickling (Green Prolific)	.38	.40	.43
Chicago Pickling	.38	.40	.43
DAVIS PERFECT	.35	.37	.40
DELTA	.65	.67	.70
EARLY FORTUNE	.35	.37	.40
Early Green Cluster	.35	.37	.40
Early Short Green	.40	.42	.45
Early White Spine	.37	.39	.42
Evergreen White Spine	.38	.40	.43
Extra Long White Spine	.38	.40	.43
Gherkin or Burr	.75	.77	.80
Japanese Climbing	.44	.46	.49
Klondike	.37	.39	.42
Longfellow or Vaughan	.52	.54	.57
Long Green, Improved	.40	.42	.45
Snow's Perfection Pickling	.35	.37	.40
Straight Eight (New)	.45	.47	.50
White Wonder	.42	.44	.45
WOODRUFFS HYBRID (CLARKS SPECIAL)	.38	.40	.43

EGG PLANT

	5 to 24 Lbs.	1 to 4 Lbs.
	Per Lb.	Per Lb.
Black Beauty	\$ 2.10	\$ 2.25
Early Long Purple	\$ 2.10	\$ 2.25
Florida High Bush	2.10	2.25
New Orleans Market	2.10	2.25
New York, Improved	2.10	2.25

ENDIVE

	25 to 74 Lbs.	5 to 24 Lbs.	1 to 4 Lbs.
	Per Lb.	Per Lb.	Per Lb.
Broad Leaf Escarolle	\$ 0.40	\$ 0.42	\$ 0.45
Broad Leaved (Batavian Full-Hearted)	.40	.42	.45
Green Curled	.40	.42	.45
White Curled	.40	.42	.45
French or Witloof Chicory	.60	.62	.65

KALE

	25 to 99 Lbs.	5 to 24 Lbs.	1 to 4 Lbs.
	Per Lb.	Per Lb.	Per Lb.
(100 lbs. or over, 2 cents less)			
Dwarf German Greens	\$ 0.26	\$ 0.28	\$ 0.31
Dwarf Green Moss Curled Scotch	.30	.32	.35
Dwarf Blue Curled Scotch	.32	.34	.37
Semi-Dwarf Moss Curled Scotch	.33	.35	.38
Siberian, Improved	.26	.28	.31
Tall Green Curled Scotch	.32	.34	.37

KOHLRABI

Early Purple Vienna (short-leaved forcing)	\$ 1.05	\$ 1.10	\$ 1.15
Early White Vienna (short-leaved forcing)	1.05	1.10	1.15
Large Green	1.00	1.05	1.10

LEEK

Elephant (very large)	\$ 0.90	\$ 0.95	\$ 1.00
Large London Flag	.90	.95	1.00
Lion	.90	.95	1.00

LETTUCE

Non-Heading or loose-leaved varieties marked* (100 lbs. or more, 3 cents less)

	25 to 74 Lbs.	5 to 24 Lbs.	1 to 4 Lbs.
	Per Lb.	Per Lb.	Per Lb.
Big Boston	\$ 0.39	0.41	\$0.44
*Black Seeded Simpson	.37	.39	.42
Brown Dutch Winter	.53	.55	.58
Cabbage or Butter	.53	.55	.58
California Cream Butter	.44	.46	.49
*Chicken	.36	.38	.41
Corneli's No. 16	.54	.56	.59
*Early Curled Simpson (White Seed)	.37	.39	.42
*Grand Rapids, Forcing	.34	.36	.39
Hanson	.39	.41	.44
Hardy Green Winter	.54	.56	.59
Iceberg	.41	.43	.46
Mammoth Black Seeded Butter	.49	.51	.54
New York or Wonderful (No. 12)	.59	.61	.64
*Oak Leaved	.65	.67	.70
*Prize Head	.37	.39	.42
St. Louis Black Seeded, Forcing	.69	.71	.74
St. Louis Market	.44	.46	.49
Tranon Cos or Romaine	.37	.39	.42
White Boston	.41	.43	.46
Bird (Feed) White	.18	.20	.28

MUSKMELON AND CANTALOUPE

Our Cantaloupe seed is grown in the Rocky Ford district of Colorado and is saved from hand selected HAND CUT melons (not machine threshed). Varieties listed in Capitals can be supplied in 1-pound Keystone cotton bags sealed with Keystone seal at the regular 1 to 4 lbs. price

	25 to 74 Lbs.	5 to 24 Lbs.	1 to 4 Lbs.
	Per Lb.	Per Lb.	Per Lb.
Green Fleshed Varieties			
Hand Cut (75 lbs. or more, bulk, 3 cents less)			
Casaba Golden Beauty	\$ 0.46	\$ 0.48	\$ 0.51
Eden Gem	.38	.40	.43
Hackensack, Large	.38	.40	.43
Hackensack, Extra Early	.38	.40	.43
Honey Ball	.40	.42	.45
Honey Dew	.43	.45	.48
Netted Gem or Nutmeg	.38	.40	.43
Rocky Ford	.38	.40	.43
Pink or Orange Fleshed Varieties (75 Lbs. or more, 3 cents less)			
Banana	.40	.42	.45
Benders Surprise	.38	.40	.43
Burrell's Gem	.38	.40	.43
Corneli's Mammoth Rust-Proof Pink Meat	.48	.50	.53
Emerald Gem	.38	.40	.43
HALE'S BEST IMPROVED	.37	.39	.42
HALE'S BEST No. 36	.37	.39	.42
HALE'S BEST No. 936	.37	.39	.42
HEARTS OF GOLD	.39	.41	.44
Honey Rock (Sugar Rock)	.40	.42	.45
Milwaukee Market	.40	.42	.45
101 SPECIAL	.37	.39	.42
Osage (Salmon Flesh) (Millers Cream)	.40	.42	.45
PERFECTO IMPROVED	.37	.39	.42
POLLOCK 10-25 (SALMON TINT)	.38	.40	.43
Tip Top	.38	.40	.43

CANTALOUPE SEED, CROWN SET

To meet a demand for cantaloupe seed of commercial varieties in stock seed grade we offer the following strains. This seed is from the first or crown set of fruits only.

	25 lb. Sealed Bags Per Lb.	1 Lb. Sealed Bags
HALE'S BEST, IMPROVED, Crown Set Medium large; short oval shape; heavily netted. Best general purpose.	\$ 0.50	\$ 0.60
HALE'S BEST, NO. 36, Crown Set Small, shipping size; round; heavily netted; very thick flesh	.50	.60
HALE'S BEST, NO. 936 New, very uniform, medium large.	.50	.60
HEARTS OF GOLD, Crown Set	.50	.60
KEYSTONE WINNER (New H.B.) Crown Set The newest and finest cantaloupe of Hales Best type. Good shipping size, round, heavily netted, extremely thick flesh, small seed cavity, delicious flavor and unsurpassed for shipping qualities.	.50	1.00
PERFECTO IMPROVED, Crown Set	.50	.60

WATERMELON

Our Northern Grown Seed. Varieties marked * available also in Gilberts seed, 25 lb. sealed bags only, same price.

(75 lbs. or more, 1 cent less)

	25 to 74 Lbs. Per Lb.	5 to 24 Lbs. Per Lb.	1 to 4 Lbs. Per Lb.
Alabama Sweet	\$ 0.25	\$ 0.27	\$ 0.30
Cole's Early	.28	.30	.33
Cuban Queen (Black Seed)	.28	.30	.33
*DIXIE QUEEN (Small White Seed)	.50	.52	.55
Early Kansas	.30	.32	.35
*Excell	.25	.27	.30
Florida Favorite	.28	.30	.33
Georgia Rattlesnake	.28	.30	.33
Golden Honey	.30	.32	.35
*Halbert's Honey	.28	.30	.33
Harris' Early	.28	.30	.33
*Irish Grey	.28	.30	.33
*Kleckley's Sweet or Monte Cristo	.28	.30	.33
Kolb Gem	.28	.30	.33
Long Dixie	.28	.30	.33
Red Citron	.30	.32	.35
*Schochler	.35	.37	.40
*Stone Mountain or Dixie Bell	.28	.30	.33
Sweetheart	.28	.30	.33
Thurmond Grey	.25	.27	.30
*Tom Watson, Improved	.28	.30	.33
*Wondermelon (Imp. Kleckley's Sweet)	.28	.30	.33

MUSTARD

(100 lbs. and over, 1 cent less)

	25 to 99 Lbs. Per Lb.	5 to 24 Lbs. Per Lb.	1 to 4 Lbs. Per Lb.
Chinese Broad Leaf	\$ 0.15	\$ 0.16	\$ 0.18
Florida Broad Leaf	.16	.17	.19
Fordhook Fancy Curled	.15	.16	.18
Southern Giant Curled	.15	.16	.18
SOUTHERN GIANT CURLED (LONG STANDING)	.19	.20	.22
Yellow or White London	.14	.15	.17
Ostrich Plume	.19	.20	.22
TENDERGREEN (JAP. MUSTARD SPINACH)	.15	.16	.18

OKRA OR GUMBO

(100 lbs. and over, 1 cent less)

Improved Dwarf Green
Long Green (Perkins Mammoth Tall)
White Velvet
Dwarf Green Prolific
Dwarf Long Pod, Green

ONION

(100 lbs. and over, 5 cents less)

	\$1.00	\$1.05	\$1.10
Australian Brown	\$1.00	\$1.05	\$1.10
Danver's Yellow Globe	.95	1.00	1.05
Ebenezer or Japanese Yellow	1.00	1.05	1.10
Mammoth Silver King (Imported)	1.00	1.05	1.10
Philadelphia White Silver Skin	1.05	1.10	1.15
Red Wethersfield	1.00	1.05	1.10
Southport Red Globe	.95	1.00	1.05
Southport White Globe	1.15	1.20	1.25
Southport Yellow Globe	1.05	1.10	1.15
Southport Yellow Globe, Brigham Strain	1.10	1.15	1.20
Sweet Spanish (Valencia, Riverside)	1.10	1.15	1.20
White Sweet Spanish	1.15	1.20	1.25
White Lisbon	1.15	1.20	1.25
White Portugal	1.05	1.10	1.15
Yellow Giant Prizetaker	.95	1.00	1.05

BERMUDA ONION

Genuine Teneriffe Island Grown

	25 to 49 Lbs. in tins	5 to 24 Lbs. Per Lb.	1 to 4 Lbs. Per Lb.
Yellow Bermuda	\$1.40	\$1.45	\$1.50
Crystal Wax	1.85	1.90	1.95

Seed is packed in 25-lb. sealed tins, 2 tins per case, but may be ordered in any quantity, in bulk.

PARSLEY

(100 lbs. and over, 2 cent less)

	25 to 99 Lbs. Per Lb.	5 to 24 Lbs. Per Lb.	1 to 4 Lbs. Per Lb.
Doubled Curled	\$ 0.22	\$ 0.23	\$ 0.25
Hamburg (Edible Root)	.22	.23	.25
Moss Curled	.22	.23	.25
Plain	.22	.23	.25

PARSNIP

(50 lbs. and over 2 cents less)

	25 to 49 Lbs. Per Lb.	5 to 24 Lbs. Per Lb.	1 to 4 Lbs. Per Lb.
Improved Guernsey	\$ 0.26	\$ 0.27	\$ 0.29
Large Hollow Crown	.26	.27	.29

PEPPER

Pungent or "Hot" Varieties

	25 to 74 Lbs. Per Lb.	5 to 24 Lbs. Per Lb.	1 to 4 Lbs. Per Lb.
Anaheim Chile	\$ 1.60	\$ 1.65	\$ 1.75
Hungarian Wax			
Long Red Cayenne (Slim)	1.10	1.15	1.25
Red Chile	1.90	1.95	2.05
Bird (Feed) Hot			

PEPPER—Continued

Sweet Varieties

	25 to 74 Lbs. Per Lb.	5 to 24 Lbs. Per Lb.	1 to 4 Lbs. Per Lb.
California Wonder	\$ 2.35	\$ 2.40	\$ 2.50
Chinese Giant	2.10	2.15	2.25
Cornell's Special	1.50	1.55	1.65
Harris' Early Giant	1.50	1.55	1.65
Large Bell or Bullnose	1.50	1.55	1.65
Large Yellow (Oshkosh)	3.25	3.30	3.40
Ohio Crimson	2.00	2.05	2.15
Pimiento or Perfection	1.40	1.45	1.55
Royal King	1.50	1.55	1.65
Ruby King (Select)	1.40	1.45	1.55
Sunnybrook	1.35	1.40	1.50
Sweet Mountain	1.50	1.55	1.65
World Beater	1.30	1.35	1.45

PUMPKIN

(75 lbs. or more, 2 cents less)

	25 to 74 Lbs. Per Lb.	5 to 24 Lbs. Per Lb.	1 to 4 Lbs. Per Lb.
Connecticut Field (Big Tom)	\$ 0.30	.32	.35
Cushaw Crookneck, Golden	.41	.43	.46
Cushaw Crookneck, Green Striped	.37	.39	.42
Cushaw Crookneck, White	.40	.42	.45
Early Sugar	.32	.34	.37
Japanese Pie	.40	.42	.45
KENTUCKY FIELD	.14	.16	.19
King of the Mammoth	.40	.42	.45
Large Cheese	.30	.32	.35
Tennessee Sweet Potato	.37	.39	.42
Winter Luxury	.42	.44	.47

RADISH

(100 lbs. or more, 2 cents less)

	25 to 99 Lbs. Per Lb.	5 to 24 Lbs. Per Lb.	1 to 4 Lbs. Per Lb.
California White Mammoth	\$ 0.22	\$ 0.24	\$ 0.27
Chartier Long Rose, White Tip	.23	.25	.28
Crimson Giant	.22	.24	.27
Early Long Scarlet, Short Top	.23	.25	.28
Early Scarlet Turnip	.22	.24	.27
Early Scarlet Turnip, White Tip	.22	.24	.27
Early Scarlet Turnip, White Tip, Forcing	.25	.27	.30
Early White Turnip	.32	.33	.36
EARLY SCARLET GLOBE, SPECIAL	.24	.26	.29
French Breakfast	.21	.23	.26
Icicle	.22	.24	.27
Long Brightest Scarlet, Cardinal	.20	.22	.25
Long White, Lady Finger	.24	.26	.29
Philadelphia White Box	.32	.34	.37
Rapture (New Scarlet White Tip)	.20	.22	.25
Saxa	.25	.27	.30
Scarlet Globe, Vick's	.24	.26	.29
SPARKLER WHITE TIP	.22	.24	.27
St. Louis White Summer	.22	.24	.27
Strasburg White Summer	.22	.24	.27
Yellow Summer Turnip	.34	.36	.39

Winter Varieties

Long Black Spanish	\$ 0.27	\$ 0.29	\$ 0.32
Round Black Spanish	.27	.29	.32
Rose-Colored China	.22	.24	.27

RHUBARB

Victoria	Per Lb.	\$ 0.75
----------	---------	---------

SALSIFY

	25 to 74 Lbs. Per Lb.	5 to 24 Lbs. Per Lb.	1 to 4 Lbs. Per Lb.
Mammoth Sandwich Island	\$ 0.65	\$ 0.70	\$ 0.75

SPINACH

Our SPINACH strains are selected from the finest Holland grown stock by TRIAL GROUND TESTS on our Keystone Valley Farm

Holland Grown—Re-Selected Stock

500 lbs or more, 1/2¢ less

	100 to 500 Lbs. Per Lb.	25 to 99 Lbs. Per Lb.	5 to 24 Lbs. Per Lb.	1 to 4 Lbs. Per Lb.
Bloomsdale, Savoy Re-selected	\$ 0.11 1/2	\$ 0.12	\$ 0.13	\$ 0.14
Bloomsdale, Dark Green	.13	.14	.15	.16
Bloomsdale, Blight Resistant	.12	.13	.14	.15
Bloomsdale, Long Standing	.13	.14	.15	.16
Flanders Broad Leaf	.12 1/2	.13 1/2	.14	.15
Giant Thick Leaved, Nobel	.13 1/2	.14	.15	.16
King of Denmark	.18	.19	.20	.25
New Zealand	.13 1/2	.14	.15	.16
Round Thick Leaved	.13 1/2	.14	.15	.16
Victoria	.13	.14	.15	.16
Viking	.13	.14	.15	.16
Virginia Savoy (American grown)	.12	.13	.14	.15
Viroflay	.12	.13	.14	.15

Prickly Seeded Varieties

Amsterdam	.12	.13	.14	.15
Amsterdam Giant	.13	.14	.15	.16
Hollandia	.12	.13	.14	.15
Presto (Savoy)	.18	.19	.20	.21
Prickly Winter	.12	.13	.14	.15

SQUASH

(75 lbs. or more, 2 cents less)

Summer Varieties

	25 to 74 Lbs. Per Lb.	5 to 24 Lbs. Per Lb.	1 to 4 Lbs. Per Lb.
Bennings Early White Bush Scallop, Green Tinted	\$ 0.35	\$ 0.37	\$ 0.40
Cocozelle or Italian Vegetable Marrow (bush)	.38	.40	.43
Early White Bush Scallop	.34	.36	.39
Mammoth White Bush Scallop	.36	.38	.41
Early Yellow Bush Scallop	.37	.39	.42
Early Summer Crookneck, Yellow	.34	.36	.40
Giant Summer Crookneck, Yellow	.37	.39	.42
Giant Straightneck, Yellow	.37	.39	.42
Zucchini, Gray Green	.42	.44	.47
Zucchini, Black	.50	.52	.55

Fall and Winter Varieties

Banana	\$ 0.40	\$ 0.42	\$ 0.45
Boston Marrow	.40	.42	.45
Delicious	.45	.47	.50
Des Moines or Table Queen	.40	.42	.45
Hubbard, Blue	.45	.47	.50
Hubbard, Golden	.40	.42	.45
Hubbard Improved	.37	.39	.42
Hubbard, Chicago Warted	.40	.42	.45
Winter Crookneck, Golden	.50	.52	.55

TOMATO

Varieties in CAPITALS can be supplied Semesan treated, packed in 1/4 lb., 2 oz. and 1 oz. packages at these prices

50 lb. lots Semesan treated but not packaged, 10¢ per lb. less

Red or Scarlet Fruited Varieties	25 to 49	5 to 24	1 to 4
	Lbs. Per Lb.	Lbs. Per Lb.	Lbs. Per Lb.
Bonny Best	\$ 1.50	\$ 1.55	\$ 1.65
BREAK O'DAY	2.00	2.05	2.15
Chalk's Early Jewel	1.50	1.55	1.65
CHALK'S EARLY JEWEL, CERTIFIED	1.75	1.80	1.90
Clark's Early	2.00	2.05	2.15
Dwarf Stone	2.75	2.80	2.90
Earliana	1.50	1.55	1.65
GREATER BALTIMORE	1.25	1.30	1.40
GREATER BALTIMORE, CERTIFIED	1.50	1.55	1.65
Grothen's Red Globe	3.50	3.55	3.65
John Baer	1.50	1.55	1.65
Louisiana, Red	2.25	2.30	2.40
MARGLOBE, WILT RESISTANT (Keystone)	2.00	2.05	2.15
MARGLOBE, W. R. (Keystone), Certified	2.25	2.30	2.40
MASTER MARGLOBE Certified (1 lb. bags)	2.50	2.55	2.65
Marketeer	2.00	2.05	2.15
MATCHLESS	1.25	1.30	1.40
McGEE	2.00	2.05	2.15
NORTON, WILT RESISTANT	1.75	1.80	1.90
Penn State Self Topper	4.50	4.55	4.65
Perfection	1.50	1.55	1.65
PRITCHARD (Scarlet Topper)	1.50	1.55	1.65
PRITCHARD, CERTIFIED	1.85	1.90	2.00
RUTGERS, CERTIFIED	2.00	2.05	2.15
RED ROCK	1.25	1.30	1.40
STONE, IMPROVED	1.25	1.30	1.40
STONE, IMPROVED CERTIFIED	1.50	1.55	1.65

Crimson or Purplish Fruited Varieties

	25 to 49	5 to 24	1 to 4
	Lbs. Per Lb.	Lbs. Per Lb.	Lbs. Per Lb.
Brimmer	\$ 3.00	\$ 3.05	\$ 3.15
COOPER'S SPECIAL	2.25	2.30	2.40
Dwarf Champion (Tree Tomato)	2.75	2.80	2.90
Dwarf Ponderosa	3.00	3.05	3.15
Early Detroit	2.50	2.55	2.65
GULF STATE MARKET	1.90	1.95	2.05
JUNE PINK	2.00	2.05	2.15
LIVINGSTON'S GLOBE	2.25	2.30	2.40
Livingston's Beauty	2.10	2.15	2.25
Louisiana, Pink	2.75	2.80	2.90
MARIHO (NEW, PINK MARGLOBE)	2.50	2.55	2.65
Ox Heart	4.00	4.05	4.15
Ponderosa	2.75	2.80	2.90

Other Varieties

	Per Lb.
Golden Queen	\$ 2.75
Ponderosa, Yellow	3.00
Yellow, Pear Shaped	3.00
Yellow, Plum Shaped	3.00
Red Cherry	3.00

TURNIP

(500 lbs., or over, total order, 1/2 cent less)

	100 to 500	25 to 99	5 to 24	1 to 4
	Lbs. Per Lb.	Lbs. Per Lb.	Lbs. Per Lb.	Lbs. Per Lb.
Aberdeen	\$ 0.18	\$ 0.19	\$ 0.20	\$ 0.23
Amber Globe	.16	.17	.18	.21
Extra Early Purple Top Milan	.20	.21	.22	.25
Extra Early White Milan	.20	.21	.22	.25
Japanese Shogoin	.14	.15	.16	.19
Large White Globe	.15	.16	.17	.20
Large Yellow Globe	.17	.18	.19	.22
Long White Cowhorn	.17	.18	.19	.22
Pomeranian White Globe	.15	.16	.17	.20
Purple Top, Strap Leaved	.16	.17	.18	.21
Purple Top, White Globe	.17	.18	.19	.22
Red Top, White Globe (Early)	.18	.19	.20	.23
Southern Prize	.22	.23	.24	.27
Seven Top or Winter Greens	.20	.21	.22	.25
Snow Ball	.15	.16	.17	.20
White Egg	.17	.18	.19	.22
White Flat Dutch	.15	.16	.17	.20

RUTABAGA

	100 to 500	25 to 99	5 to 24	1 to 4
	Lbs. Per Lb.	Lbs. Per Lb.	Lbs. Per Lb.	Lbs. Per Lb.
American Yellow, Purple Top	\$ 0.17	\$ 0.18	\$ 0.19	\$ 0.22
Sweet German	.20	.21	.22	.25

TOBACCO SEED

	Per Lb.
Connecticut Seed Leaf	\$ 2.50
Havana	2.80
Missouri Broad Leaf	2.50
White Burley	2.50
Judy's Pride	2.50

FLOWER SEED

Send for new complete Bulk Flower Seed Price List

Sweet Peas	25 Lbs.	5 to 24	1 to 4
	and Over Per Lb.	Lbs. Per Lb.	Lbs. Per Lb.
Cornell's Prize Spencer Mixed	\$ 0.62	\$ 0.65	\$ 0.70
Spencer Mixed	.32	.35	.40
Eckford's Mixed	.27	.30	.35
Grandiflora Mixed	.27	.30	.35
Cupid or Dwarf, Mixed	.72	.75	.80

Nasturtium

	25 Lbs.	5 to 24	1 to 4
	and Over Per Lb.	Lbs. Per Lb.	Lbs. Per Lb.
Dwarf Mixed	\$ 0.37	\$ 0.40	\$ 0.45
Tall Mixed	.32	.35	.40
Golden Gleam	.42	.45	.50

Zinnia

5 lbs., 10 cents per lb. less

	Per Lb.
Colossal Giant, Mixed	\$ 2.50
Dahlia Flowering, Mixed	4.00
Lilliput, Mixed	3.50

HERBS

Herbs can also be supplied in packet at \$2.50 per 100

	Per Lb.
Basil Sweet	\$ 0.85
Borage	.70
Caraway	.30
Cardoon	2.00
Chervil	.60
Coriander	.45
Dill, Long Island Mammoth	.30
Florence Fennel (Sweet Italian)	.65
Poppy or Maw	.25
Rosemary	3.50
Sage Broadleaf	1.50
Sorrel Broadleaf	1.00
Summer Savory	.75
Sweet Marjoram	1.75
Sweet Thyme	2.00
Water Cress	2.50

PLANET JR. GARDEN TOOLS

Specialized Equipment for the COMMERCIAL GROWER and HOME GARDENER
MADE OF BEST MATERIALS BUILT TO LAST

We list a few of the most popular tools which we carry in stock in St. Louis

No.	Description	List Price
No. 3	—Hill and Drill Seeder	\$19.00
No. 4	—Combination Hill and Drill Seeder, Single Wheel Hoe, Cultivator and Plow	19.50
No. 4D	—As a Seeder only	15.50
No. 25	—Combination Hill and Drill Seeder, Double and Single Wheel Hoe, Cultivator and Plow	23.50
No. 300A	—Seeder for Upland Soil	21.00
No. 11	—Combined Double and Single Wheel Hoe (includes full set of attachments)	14.50
No. 12	—Combined Double and Single Wheel Hoe (includes only most necessary attachments)	11.50
No. 13	—Combined Double and Single Wheel Hoe (includes 1 pair 6" Hoes)	8.75
No. 17	—Single Wheel Hoe (Home Gardeners Favorite)	8.00
No. 19	—Garden Plow	5.00
No. 119	—High Wheel Garden Plow	4.00
No. 7	—7 1/2 inch Star Pulverizer (does a fine job)	3.25
No. 8	—Combined Horse Hoe and Cultivator (without Depth Regulator)	15.75
No. 9	—Combined Horse Hoe and Cultivator (complete)	16.75
No. 9D	—Combined Horse Hoe and Cultivator (without wheel)	13.00

All Prices F. O. B. St. Louis. Your Discount 25%

WRITE FOR OUR SPECIAL COMPLETE INSECTICIDE PRICE LIST

PAPER BAGS FOR YOUR SEED DEPARTMENT

Genuine Heavy Kraft Seed Bags

Printed with your Firm Name, Keystone Emblem and Non-warranty

	UNPRINTED		
	Per 100	Per 1000	Per 1000
1 Oz. Flat, Gummed Kraft, Printed with Keystone Ad and Non-warranty	\$0.15	\$0.90	\$1.25
1 Oz. Flat, Gummed	.15	.90	1.25
2 Oz. Flat, Gummed	.30	2.00	3.00
4 Oz. Flat, Gummed	.40	2.50	3.50
1 Pint Satchel Bottom	.50	3.50	4.50
1 Qt. Satchel Bottom	.60	4.00	5.00

On orders of less than 1,000 printed, there will be a minimum printing charge of \$1.00 for each set up. Keystone 1 oz. bags minimum imprinting 35¢; 5,000 or more 1 oz. bags, imprinted at \$1.00 per 1,000.



DISPLAY RACK, CATALOGS, NEW LITHOGRAPHED LABELS, POURING SPOUTS, Etc.

FOR DISPENSING SMALL SEEDS

	F. O. B. St. Louis
New Catalog with accurate descriptions of Vegetables, Imprinted with your name, per 100	\$ 5.00
New Lithographed Jar Labels for Keystone Bulk Garden seeds (send for list) 1¢ each or complete set of 267 labels, per set	1.00
1 Qt. Square Jar with pouring spout cap packed 1 doz. per case	.85
Pouring Spout and Cap only, per doz.	.25
Measuring Glass with Chart, each	.35
Bulk Garden Seed Display Rack; 3 shelves holding 24 jars and paper bags, varnished natural wood finish with enameled Keystone Seed Sign on top panel	3.50

CORNELI SEED COMPANY

ST. LOUIS, MO.

FIELD SEEDS—Write For Our Complete List, "KEYSTONE KOMMENTS"

REQUEST FOR QUOTATIONS

ON

KEYSTONE BULK GARDEN SEEDS

to CORNELI SEED COMPANY

ST. LOUIS, MO., U. S. A.

Gentlemen,19
 Please quote prices, WITHOUT OBLIGATION,
 on the quantities of KEYSTONE Bulk Garden
 Seeds listed below for shipment on or about

.....19

Name

Address

If this is an order fill in other space. >>

To Use This Sheet As An Order Blank
 Fill in the following:

Please Ship this Order.....19.....

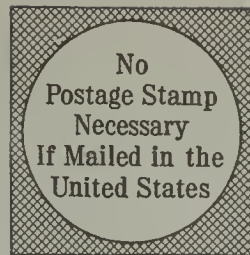
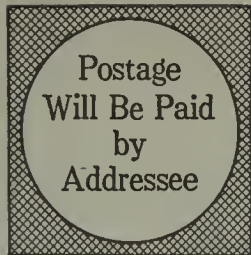
To.....

At.....Via.....

Not an order unless this space is filled in.

NOTICE: We give no warranty, express or implied as to description, quality, productiveness or any other matter of any seeds, bulbs or plants we sell and will not be responsible for the crop.

Lbs.	Pr.	Amt.	Lbs.	Pr.	Amt.	Lbs.	Pr.	Amt.
ASPARAGUS			MANGEL WURTZEL (Cont.)			SWEET CORN (Cont.)		
Argenteuil			Norbiton's Mammoth Long Red			Snowflake		
Mary Washington (Rust resist)						Stowell's Evergreen		
Pahnetto			BROCCOLI			Stowell's Evergreen, Canner Strain		
BEANS			Green Sprouting			Trucker's Favorite		
Green Podded Dwarf			Italian Calabrese			Vanguard		
Black Valentine			Extra Early Propageno			Wonder Bantani, Barden's		
Black Valentine Stringless			BRUSSELS SPROUTS			Whipple's Yellow		
Bountiful			Improved Long Island			Whipple's White		
Burpee's Stringless Greenpod			Paris Half Dwarf			CORN SALAD		
Dwarf Horticultural			CABBAGE			Large Leaved		
Early Stringless Refugee			All Head Early			CUCUMBER		
Full Measure			All Head 'Yellows-Resistant			Arlington White Spine		
Giant Stringless Green Pod			All Seasons			Black Diamond ("Stays Green")		
Keystone Valley Stringless			All Seasons, Yellows-Resistant			Boston Pickling		
Longfellow			Charleston Wakefield			Chicago Pickling		
Navy			Copenhagen Market (Select Holland)			Davis Perfect		
Red Kidney			Copenhagen (Extra Select Danish)			Deltus, Extra Long Dark Green		
Red Valentine			Corneli's Late Flat Dutch			Early Fortune		
Red Valentine Stringless			Danish Ball Head, Short Stem			Early Green Cluster		
Roger's Stringless Refugee			Early Dwarf Flat Dutch			Early Short Green		
Tennessee Green Pod			Early Dwarf Ulm Savoy			Early White Spine		
Tender Green			Early Jersey Wakefield			Evergreen White Spine, Extra Long		
Wax Podded Dwarf			Glory of Enkhuizen			Gherkin or Burr		
Black Wax (Pencil Pod)			Golden Acre (select Holland)			Klondike		
Brittle Wax (Round Pod Kidney Wax)			Golden Acre (Extra Select Danish)			Long Green Improved		
Currie's Rust Proof Wax			Henderson's Early Summer			Japanese-Clubbing		
Davis' White Kidney Wax			Late St. Louis Market			Snow's Perfection Pickling		
Improved Golden Wax			Mammoth Dark Red			White Wonder		
Improved Stringless Kidney Wax			Marion Market, Yellows-Resistant			Woodruff's Hybrid (Clarks Special)		
Surecrop			Perfection Late Drumhead, Savoy			EGG PLANT		
Wardwell's Kidney Wax			Premium Late Flat Dutch			Black Beauty		
Unrivaled Wax			Red Roek (Extra Select Danish)			Early Long Purple		
Dwarf Lima Beans			Stein's Flat Dutch			Florida High Bush		
Burpee's Large Bush Lima			Winningsstadt			New Orleans Market		
Burpee's Impr. Bush Lima			Wise, Hollander No 8 Yellows-Resistant			New York Improved		
Fordhook Bush Lima			Wong Bok Chinese Cabbage			ENDIVE		
Henderson's Bush Lima			Chihli Chinese Cabbage			Broad Leaved (Batavian)		
Jackson Wonder Speckled			Pe Tsai Chinese Cabbage			French (Witloof Chicory)		
McCrea's Lima			CARROTS			Green Curled		
Wood's Prolific			Chantenay			Pancalier		
Pole Beans			Chantenay Coreless			White Curled		
Burgers Stringless (Wh. Seed Ky. W.)			Chantenay, Red Core			KALE or BORECOLE		
Dutch Caseknife			Corneli's Coreless			Dwarf German Greens		
Golden Cluster Wax			Danver's Half Long			Dwarf Green Curled Scotch		
Great Northern			Imperator			Semi Dwarf Moss Curled		
Horticultural Pole			Improved Long Orange			Siberian Improved		
Ideal Market			Nantes			Tall Green Curled Scotch		
Kentucky Wonder			Ox Heart or Guerande			KOHL RABI		
Kentucky Wonder (Wax)			White Belgian			Early Purple Vienna		
Lazy Wife			CAULIFLOWER			Early White Vienna		
McCaslan			Danish Giant Dry Weather			Large Green		
Missouri Wonder			Earliest Dwarf Erfurt, Extra Select			LEEK		
Red Speckled Cut Short			Early Snowball—Extra Select			Large London Flag		
St. Louis Perfection White			Super Snowball—Madsen			Muzzleburg		
Scarlet Runner			CELERY			HERBS		
Yardlong			Celeric, Erfurt			Basil Sweet		
Striped Creaseback			Easy Blanching			Borage		
Tennessee Wonder (Egg Harbor)			Florida Golden			Caraway		
White Creaseback			Golden Plume			Cardoon		
Pole Lima Beans			Golden Self Blanching			Dill		
Florida Butter Speckled			White Plume			Fennel		
Jersey Extra Early Lima			Giant Pascal			Marjoram		
King of the Garden Lima			COLLARDS			Poppy or Maw		
Large White Lima or Butter			Georgia			Rosemary		
Small White Lima or Sieva			Cabbage			Sage		
BEETS			Blue Stem			Sorrel, Broundleaf		
Crimson Globe			SWEET CORN			Summer Savory		
Crosby's Egyptian			Black Mexican			Sweet Thyme		
Detroit Dard Red			Country Gentleman			LETTUCE		
Detroit Perfected			Early Adams			Big Boston		
Early Blood Turnip			Early Minnesota			Black Seeded Simpson		
Early Eelipse			Early Table			Brown Dutch Winter		
Early Wonder			Early White Evergreen			Cabbage or Butter		
Edmund's Blood Turnip			Extra Early Adams			Chicken Lettuce		
Extra Early Egyptian Dark Red			Golden Bantam			Corneli's No. 16		
Improved White Sugar			Golden Evergreen			Early Curled Simpson (White Seed)		
Long Smooth Blood			Golden Sunshine (Earliest)			Grand Rapids, Forcing		
Nuttings Gem			Howling Mob			Hanson		
Swiss Chard, Lucullus			Hybrid Golden Bantam			Hardy Green Winter		
Swiss Chard, French Dk Green, Broad Wh			Narrow Grain Evergreen					
MANGEL WURTZEL			Oregon Evergreen (Resistant to Ear-Worms)					
Giant Half Sugar Rose			(OVER)					
Golden Tankard								



BUSINESS REPLY ENVELOPE
First Class Permit No. 141, Sec. 510, P. L. & R. St. Louis, Mo.

CORNELI SEED CO.

101 CHOUTEAU AVE.

ST. LOUIS, MO.



