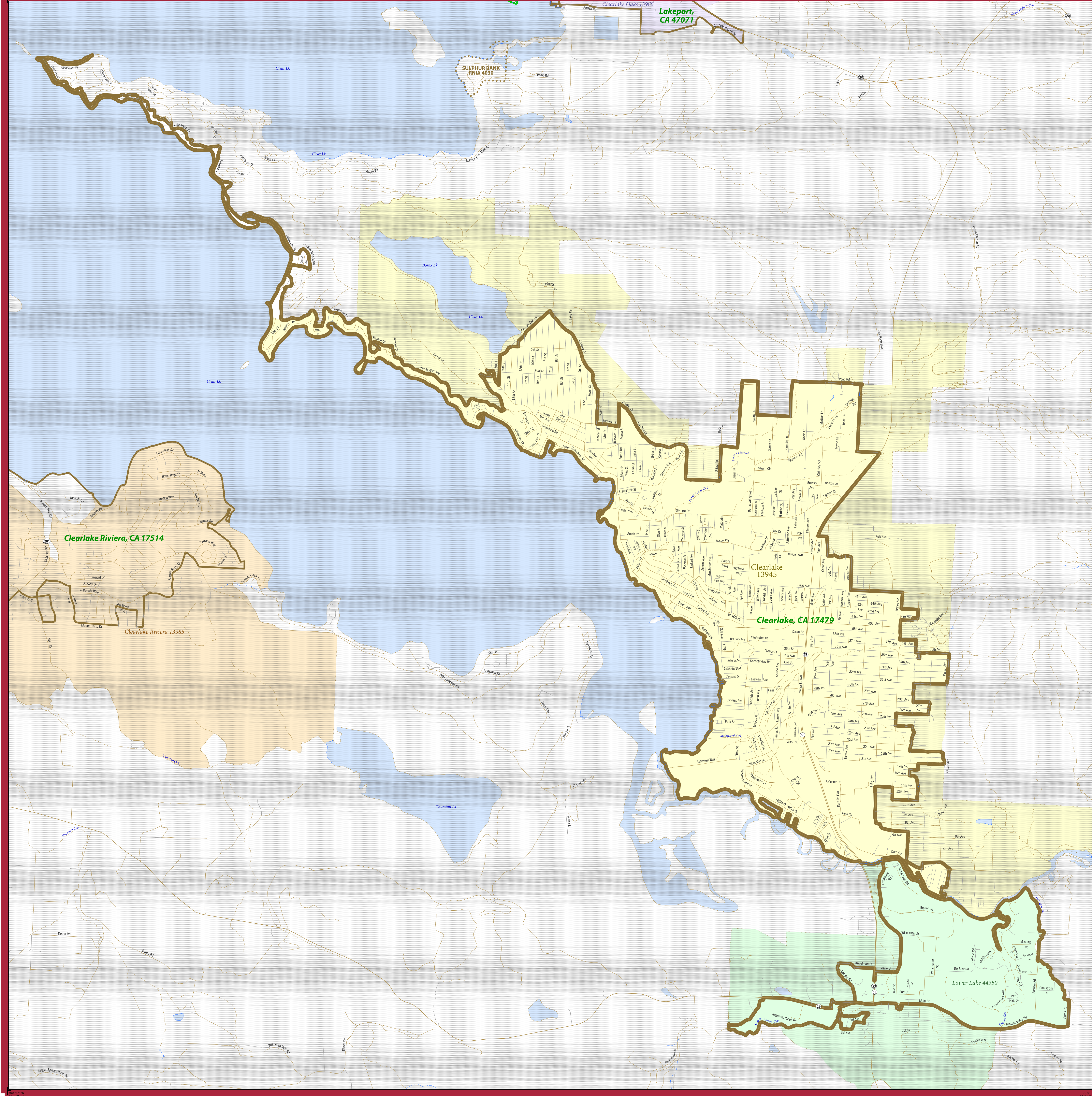


# 2010 CENSUS - URBAN CLUSTER REFERENCE MAP: Clearlake, CA



LEGEND	
SYMBOL DESCRIPTION	LABEL STYLE
International	CANADA
Federal American Indian Reservation	L'ANSE RES 1880
Off-Reservation Trust Land	T1880
Urbanized Area	Dover, DE 24580
Urban Cluster	Toole, VT 88057
State (or statistically equivalent entity)	NEW YORK 36
County (or statistically equivalent entity)	ERIE 029
Minor Civil Division (MCD) <sup>1,2</sup>	Bristol town 07485
Consolidated City	MILFORD 47500
Incorporated Place <sup>3</sup>	Davis 18100
Census Designated Place (CDP) <sup>3</sup>	Incline Village 35100

DESCRIPTION	SYMBOL	DESCRIPTION	SYMBOL
Interstate		Water Body	
U.S. Highway		Military	
State Highway		Outside Subject Area	
Other Road			
Railroad			
Perennial Stream			
Intermittent Stream			

Where international, state, county, and/or MCD boundaries coincide, the map shows the boundary symbol for only the highest-ranking of these boundaries.

1 A "\*" following an MCD name denotes a false MCD. A "\*" following a place name indicates that a false MCD exists with the same name and FIPS code as the place; the false MCD label is not shown.

2 MCD boundaries are shown in the following states in which some or all MCDs function as general-purpose governmental units: Connecticut, Illinois, Indiana, Kansas, Maine, Massachusetts, Michigan, Minnesota, Missouri, Nebraska, New Hampshire, New Jersey, New York, North Dakota, Ohio, Pennsylvania, Rhode Island, South Dakota, Vermont, and Wisconsin. (Note that Illinois and Nebraska have some counties covered by nongovernmental precincts and Missouri has most counties covered by nongovernmental townships.)

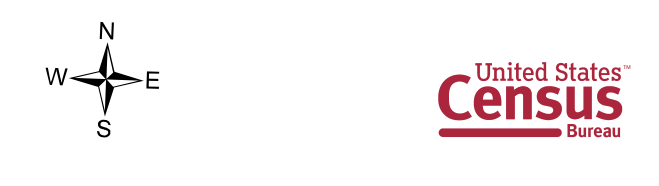
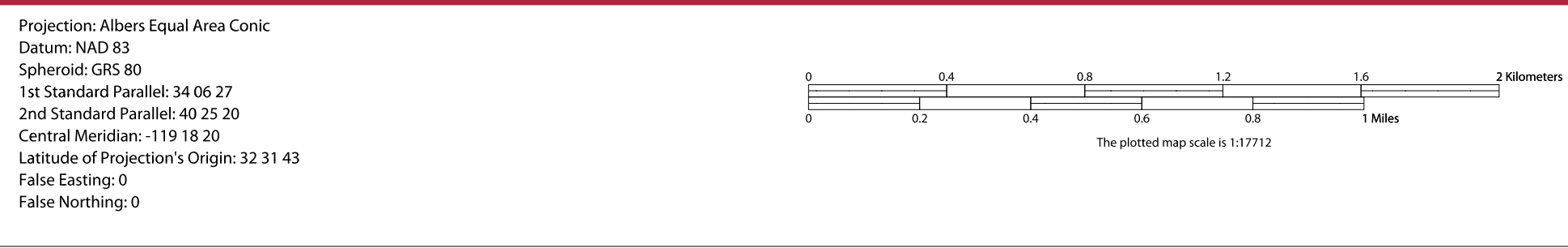
3 Place label color corresponds to the place fill color.  
Label colors: Davis Davis Davis Davis Davis

**SUBJECT AREA COUNTIES ON MAP SHEET**  
06033 Lake

All legal boundaries and names are as of January 1, 2010. Urban areas are based on results from the 2010 Decennial Census. The boundaries shown on this map are for Census Bureau statistical data collection and tabulation purposes only; their depiction and designation for statistical purposes does not constitute a determination of jurisdictional authority or rights of ownership or entitlement.

Geographic Vintage: 2010 Census (reference date: January 1, 2010)  
Data Source: U.S. Census Bureau's MAI/TIGER database (TAB10)  
Map Created by: Geography Division: March 11, 2012

U.S. DEPARTMENT OF COMMERCE Economics and Statistics Administration U.S. Census Bureau



PARENT SHEET 1  
Total Sheets: 1  
Index Sheets: 0  
Parent Sheets: 1

UC NAME: Clearlake, CA  
UC CODE: 17479  
ENTITY TYPE: Urban Cluster (UC)  
ST: California (06)