

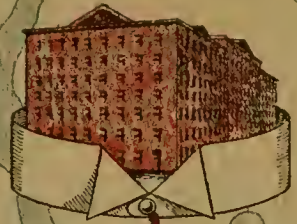
F127  
.M5-57

# AT THE GATEWAY OF THE MOHAWK



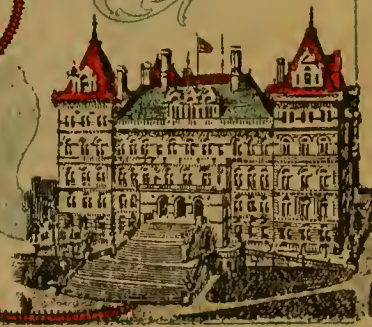
DIVISION  
BALSTON SPA.

SARATOGA  
BALSTON LAKE  
FOREST PARK



TROY DIVISION

ALBANY DIVISION





AT THE GATEWAY  
OF THE MOHAWK.

An official illustrated  
souvenir Guide of the  
Schenectady Railway Co ;  
"including historical scenes, beau-  
tiful and picturesque views of nat-  
ure, notable works of man and  
places of recreation and amuse-  
ment in the Triangle at the con-  
fluence of the Mohawk and the  
Hudson, all united by the most  
complete electric railway  
system in the world .



The Gateway

105  
M 55 33

Like a gem in an emerald setting  
Lies Ballston Lake in the woodland



At the leafy portal of  
Forest Park  
Where echo the songs of  
the woodland.

In  
Shade  
and  
Sand  
on  
Ballston's  
Strand.



And now we come to the woodland scenes.

Forest Park, Ballston Lake. Saratoga Division, Schenectady Railway Company





Ballston Lake, the Beautiful Shenantaha, or Deer Water, of the Mohawks  
Controlled by the Schenectady Railway Company, and the trim launch, Comanche, seen in the distance, illustrates one  
of the many conveniences and refined recreations provided for visitors.

through the  
colliaged halls of  
Forest Park  
the voice of the  
trees swell  
gently.



The Rustic Pagoda where sly Cupid lurks.



The embowered vista of Forest Park.



With music and  
with flowers,  
Here in the forest  
bowers,  
Dance on the  
joyous hours.

Recreations in the Forest Primeval on the Shore of Ballston Lake



**T**HE shadow of this stately elm falls upon the site of the log cabin which was the home of Michael McDonald, the first white settler of Saratoga County, and from which the intrepid pioneer beheld the panorama of the universe mirrored in the waters of Ballston Lake. Here, too, rested Sir William Johnson when, as an invalid, his faithful Mohawks patiently bore him over the trail then untrod by white man, to the Springs of the Great Spirit that he might be healed. Now the palatial interurban cars of the Schenectady

Railway Company, impelled

by the subtle power of

electricity over bands

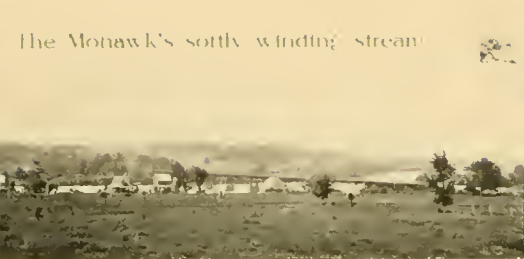
of throbbing steel

measuring in minutes the distance that once required weeks to cover, and following on its heels the same paths from thousands of the world's seedlings of rest, health and recreation. Near the site of his pioneer home, within sound of the merry boating parties on the lake that he loved, and where the hum of the electric cars can be heard, is the grave of McDonald, the host of Johnson, and later Washington's guide to the healing springs to the north. This historic ground is only a short distance from the entrance to Forest Park and a delightful trip by water from the picturesque boat landing.





The Mohawk's softly winding stream



The Castle at Ballston Lake, around which nature spreads enchanting scenes.



How airy and bright,  
By day or by night,  
With naught our pleasures  
to mar,  
Is the cheering tide  
Through a country-side  
In a humming trolley car!



Two mile tangent

THE territory traversed by the Saratoga Division of the Schenectady Railway Company abounds in beautiful and picturesque scenery as well as being replete with historical interest and the achievements wrought by the skill and enterprise of man. The vicinity of The Castle at Ballston Lake inspired William Bliss Baker, the American Corot, to paint his masterpiece, Fallen Monarchs, and here in the silence of the forest he conceived his second greatest work, Solitude. The rugged undulations of the country are modified by level stretches through the fertile valleys, as the two mile tangent on the double track railway illustrates, and such grand perspective views are not uncommon on any of the divisions of the Schenectady Railway Company. This division also crosses the Mohawk over the world's longest and most developed exclusively electric car service, and at one of the most picturesque spots in the winding course the historic river. A trip over the Saratoga Division opens nature's book to some of the fairest pages, all embellished with scenic romance and heroism and adorned with the deft hand of intelligent industry.



In the archways of the aqueduct which carries the Erie Canal  
across the Mohawk rainbows play in the dripping water.



WESTWARD from the great trolley bridge  
and among the trees whose shadows are  
mirrored in the stream stands the old stone  
house of early days, and in the distance  
dreamily lies McQueen's Island. Beyond this  
quiet scene surges the activity of the Electric  
City.



East  
Westward  
from the  
Canal  
this is the  
View from  
Electric  
City.

Amid these Scenes You Cross the Mohawk on the World's Longest Electric Railway Bridge

Away from the care and stress of the day,  
In the fields so fair where the golf links lay



What—  
Life's  
Game  
Without  
The  
Ladies!



Very  
feature  
the  
building  
breathes  
comfort.



THE cars on the Troy Division of the Schenectady  
Railway Company pass the entrance to this  
magnificent property of the Mohawk Golf Club, of  
Schenectady, which was organized in 1890 and has  
a membership of 800.

Home of the Mohawk Golf Club, Troy Division, Schenectady Railway Company

ST. GEORGE'S CHURCH AND CEMETERY



THE TROOPERS MANSION, SOUTH SIDE



FIRST DUTCH REFORMED CHURCH.  
CELEBRATED ITS 225th ANNIVERSARY IN 1905



1718  
OLDEST HOUSE IN SCHENECTADY



THE INDIAN MONUMENT

# Landmarks in the Interesting History of the City of Schenectady

"And let us visit historic places  
Mellowed by shadows of days of old."



Representative Schenectady Homes.

A remarkable feature in the wonderful growth of Schenectady during the past few years is the modern, beautiful and varying architecture of the houses. A notable example is the Keay Plot, developed by the General Electric Company on Upper College Hill in the eastern section of the city. Among the residences are those of Charles P. Steinmetz, the famous genius electrician, on Wendell Avenue; G. E. Emmons, General Manager of the General Electric Works as Superintendent, also on Wendell Avenue; and F. W. Rice, Jr., first Vice-President of the General Electric Company, on the corner of Onslow Place. From the Vice-President of the General Electric Company, which has its location on Frink Street, can be seen a view of

the Keay Plot, the first residential development in the city, completed in 1897. The General Electric Company built the houses on the Schenectady Keay Plot, which has its location on Frink Street, can be seen a view of the Keay Plot, the first residential development in the city, completed in 1897.



Looking East from the City



Looking West from the City

### State Street, Schenectady From May Offices Schenectady Railway Company

Starting early in the year 1884, and the P.M.P. has been...  
Schenectady, the Schenectady Railway Company...  
which is the only one in the city...  
The Schenectady Railway Company...  
The Schenectady Railway Company...  
The Schenectady Railway Company...

Even then  
we were  
progressing



Stemmetz at work



Interior of Interurban Car



When the trolley car was young



Electricity's Latest Triumph



In the Days of Auld Lang Syne

And All This Progress In Our Own Generation! What Next?



The Alternating Current Propelled this Car on its Exhibition Trip, August 19, 1904

THE practical application of the alternating current to electrical railway service, as demonstrated on the Saratoga Division of the Schenectady Railway Company, opened the way to marked reduction in the cost of equipment and a saving in the transmission of the electric current. The guests of the company on that memorable trip were: 1—A. E. Armstrong; 2—W. B. Potter; 3—Theodore Merching; 4—Harry Farquhar; 5—F. H. Fayant; 6—S. F. Cole; 7—Gen. Griffin; 8—C. H. Fairchild; 9—M. P. Rice; 10—A. I. Averill; 11—C. I. Fleveth; 12—F. J. Berg; 13—Harry F. Scourt; 14—Angus Sinclair; 15—H. D. Voght; 16—M. I. Godkin; 17—W. J. Harvte; 18—H. W. Blake; 19—J. K. LeBaron; 20—F. F. Schmidt; 21—P. P. Spaulding; 22—G. B. Laughlin; 23—Ike White; 24—John Hill; 25—W. Handbrowne; 26—A. G. Davis; 27—M. Milch; 28—E. H. Anderson; 29—C. P. Steinmetz; 30—L. H. Mullin; 31—W. I. Slichter; 32—Ray Stearns; 33—A. S. McAllister; 34—F. A. Baldwin; 35—J. G. Baukat; 36—C. Lucas; 37—E. D. Priest; 38—C. Locmus Allen; 39—W. G. Bushnell; 40—F. S. Fassett; 41—F. F. Peck; 42—G. DeB. Greene; 43—G. H. Hill; 44—J. S. Pevear; 45—C. I. Barry; 46—J. G. Barry; 47—J. N. Shannahan; 48—O. P. Luscomb; 49—F. G. Sykes; 50—A. V. Wright; 51—Frederic Smith; 52—B. I. Beebe; 53—A. P. Jenks; 54—G. E. Emmons; 55—Hinsdill Parsons; 56—C. C. Lewis; 57—W. B. Finer.







ST. MARY'S PAROCHIAL RESIDENCE



SMITH MANSION HIGH STREET



HOUSE OF  
JAMES D. HUSTON

FIRST BAPTIST CHURCH



## Pleasing Types of Architecture In Beautiful Ballston Spa

At the head of the lower valley of the Kayaderosseias River is Ballston Spa, another beautiful, romantic and historic place on the Saratoga Division of the Schenectady Railway Company. This "valley of the crooked stream" was also the "happy valley" of the Mohawk hunting bands and through which ran the trail from the Mohawk valley to Lake Champlain and the St. Lawrence. It is the classical land of Indian story made immortal by Cooper, Irving, Peter Calin and LaRochehoucauld, who at different times were guests at either the old Ballston Inn, now the Waterbury residence, or the Sans Souci hotel, which the changes of the years has served also as a law school and a ladies' seminary. Although now eclipsed by Saratoga the mineral springs of Ballston Spa were far more famous a century ago, and as early as 1787 the father of Stephen A. Douglas, the "little giant," built a commodious log tavern near the Public Spring for the accommodation of summer visitors. The village is now one of the most beautiful and thriving in the county.



roadway, Saratoga, a Summer Boulevard of American Wealth, Beauty and Fashion



**T**ROY with its population of 75,000, bustled in varied industries is the eastern terminus of the Troy Division of the Schenectady Railway Company and one of the great centers where products of mental and physical activity converge upon The Gateway of the Mohawk and spread therefrom throughout the great territory to the west. The seat of the collar, cuff and shirt industry, the birthplace of steel, the home of world famous institutions of learning and great plants turning out finished products of steel and iron, it is of necessity an important railway center and has the



ALBANY, N. Y.

natural advantage of being at the head of steamboat navigation on the Hudson. On the opposite or west bank of the river is Watervliet, the Arsenal City, just above which lies Green Island, and through portions of each pass the Schenectady cars. From the hillsides of Troy, above the Union Station, the view to the westward brings Cohoes, the Spindle City, into plain relief, and from the vicinity of beautiful Oakwood Cemetery, whose granite shafts and Earl Crematory rise before the Troy bound passengers on the Schenectady cars as they near Watervliet, may be seen the Mohawk rolling over the Cohoes precipice into the valley of the Hudson. Waterford, rich in the historic past and prosperous in the developing present, appears to the northward, between Cohoes and the upper section of Troy, or what



EMMETT HILLARD SCHOOL



UNION STATION, TROY TERMINUS SCHENECTADY RAILWAY COMPANY.





DEWEY FERRY

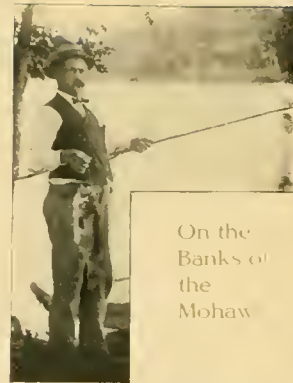


was Laurinburg. All of these places, some on the Hudson and others on the Mohawk and its deltas, are united by spans of steel, masonry and wood, forming a picturesque Venice of activity.

The proposed Cross Division of the Schenectady Railway Company is laid through the most magnificent scenery of the Mohawk Valley and the cars will cross the river at Dunsbach Ferry, a delightful recreation spot and already the Summer home of a large colony of campers.

From the time that Henry Hudson, the daring navigator and the discoverer of the great river which bears his name, was stopped in his course to the Pacific by the rapids near Waterford and the Cohoes precipice, the locality has been a noted center of trade and commerce,

for it was here that the representatives of the West India Company came to barter with the Indians for beaver and other skins even before New Amsterdam and Fort Orange were founded. Indian tradition is to the effect that the French ascended the great river to this point to carry on the fur trade some years before Hudson's voyage. With the advance of civilization the barterers to Hudson's ambition were utilized to furnish waterpower for various forms of manufacturing, and the products of machinery soon took the place of those of the hunter and the trapper in the traffic of the river. In the carrying trade of the present day the Schenectady Railway Company is an important factor, having a perfect system of electric express transportation over all its branches.

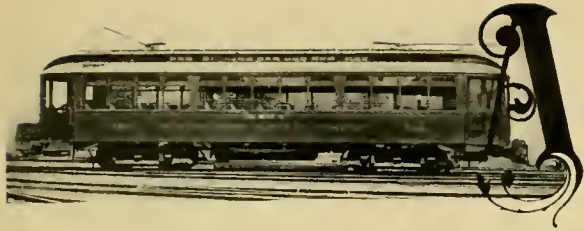


On the  
Banks of  
the  
Mohawk



From the  
Mohawk





ALBANY, the capital of the Empire State, the landing place of Fulton's Clermont, the

birthplace of the Erie Canal, the eastern terminus of the first successful steam railroad, and now a great railway center, might be termed for its location the southern point of the triangle whose apex is The Gateway of the Mohawk, 20 miles to the west, and a pleasant ride of 45 minutes over the Albany Division of Schenectady Railway Company, one of the straightest electric roadbeds in the country and flanked the entire distance by pretty hamlets, fertile fields and inviting groves.

The Capitol is one of the most magnificent structures in the world, and the Schenectady cars pass the entrance. The city is also noted for its beautiful parks, and visitors seldom miss the opportunity to spend a few hours in the attractive grounds which bear the name of Washington. Many places of historical interest are found in the city, as Albany, then Fort Orange, was the second settlement in what is now New York State, and the old Schuyler Mansion, where gathered the notables of



ALBANY CITY HALL

Albany  
Albany  
Albany



In Washing-  
ton Park

Old Schuyler  
Mansion

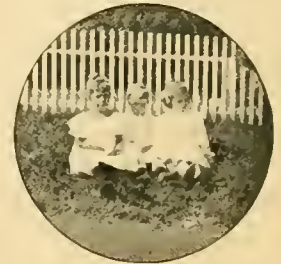


revolutionary days. The illustration. The commanding business structures on State Street and the scenes in the vicinity of the Capitol are always of deep interest to the patrons of the Schenectady cars.

At the intersection of State Street and Broadway, the Albany terminals of the Schenectady Railway Company, are to be seen the old Dutch Church, built in 1650, and surrounding it was the cemetery of early colonists. As the car passes up State Street on its journey toward the Gateway of the Mohawk it stops for a moment at Pearl Street, affording the passenger a view of another business thoroughfare, and the County Court building, at the left, occupies the site of the birthplace of Philip Schuyler. At the right is the site of the first brick building erected in North America, and just opposite may be seen the Twedde building, which marks the birthplace of Philip Livingstone, one of the signers of the Declaration of Independence, also where Webster's famous almanac and spelling book were printed and where the first Albany newspaper was published. Almost opposite the Ten Eyck Hotel and in the middle of the street stood the first Dutch church of the settlement. A short distance above and on the right hand side of the street was the first railroad depot. Historic as well as beautiful is this popular thoroughfare of the Capital City.



As the car goes by



Seen from the car



THESE CLASSIC HALLS OF UNION COLLEGE HAVE GIVEN TO THE WORLD DISTINGUISHED ALUMNI



PRES. A. V. V. RAYMOND D. D., LL. D.

FEW educational institutions of the country rank with Union College, of Schenectady, in age, historic interest and distinguished alumni, among whom are William H. Seward, Lincoln's great Secretary of State, and President Chester A. Arthur. It was founded in 1795 and passed through many vicissitudes until the genius of the late Dr. Eliphalet Nott, through more than half a century of ceaseless application, established it among the renowned and permanent seats of learning. The work of this great educator is now energetically continued by President Andrew V. V. Raymond, D. D., LL. D., who in much the same spirit that characterized the effort of the illustrious Nott has revived the glory of Old Union and is bringing it to the same high standard among the colleges of to-day that it held in the years of its greatest distinction.



UNION SQUARE

TURBULENCE



SILLIMAN HALL U. M. C. A.



THE GREAT WORKS OF THE AMERICAN LOCOMOTIVE COMPANY, SCHENECTADY, N. Y.

WHOLE person, residing in the territory traversed by the various divisions of the Schenectady Railway system, travel in any civilized country on the globe it is probable that during some period of the journey a locomotive constructed in the Schenectady plant of the American Locomotive Company would furnish the motive power for the means of conveyance. Although the plant now forms a portion of the \$50,000,000 capital of the present owning corporation, the name of Ellis will be associated with the enterprise.

In many future generations in honor of the family that accomplished its successful development. The great industry has a ground area of 45 acres, the equipment of the shops is unexcelled and 5,000 people are employed in the various departments.



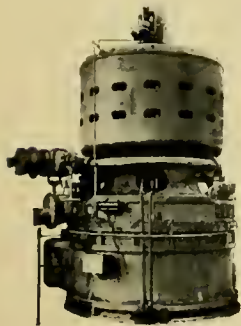




THE GENERAL ELECTRIC COMPANY'S INDUSTRIAL CITY AT SCHENECTADY, N. Y.

WITH 150 buildings, covering 60 acres of land and sheltering 10,000 employees, the Schenectady plant of the General Electric Company is one of the great industries of the world. Here the most skillful scientists, engineers, architects and mechanics are daily discovering, planning and perfecting the mechanical devices which are bringing the forces of electricity more fully under the control of man. The institution is a city in itself, with a weekly pay roll of

\$150,000. Here the electric locomotive was planned and the lighter parts were produced in the Schenectady plant of the American Locomotive Company. The steam turbine is also an important product of the General Electric Company and has already proved an important factor in augmenting the efficiency of steam power.



STEAM TURBINE.



HOMER RD BOUND - P. M. GENERAL ELECTRIC WORKS SCHENECTADY, N. Y.



HAWKWOOD, AN HISTORIC ESTATE ON BALLSTON LAKE

HAWKWOOD), a picturesque and historic estate on the west shore of Ballston Lake, was part of the great Kayaderosseras Patent, granted by Queen Anne, in 1708, to ancestors of Hon. Henry Walton, who built the present mansion in 1790. The site of McDonald's cabin, referred to in a previous page, is on this property. The Sans Souci hotel at Ballston Spa is almost contemporary with Hawkwood, and in the early years of the nineteenth century many notables of the young Republic were entertained beneath their hospitable roofs.

**Sans Souci Hotel,**

**BALLSTON SPA.**

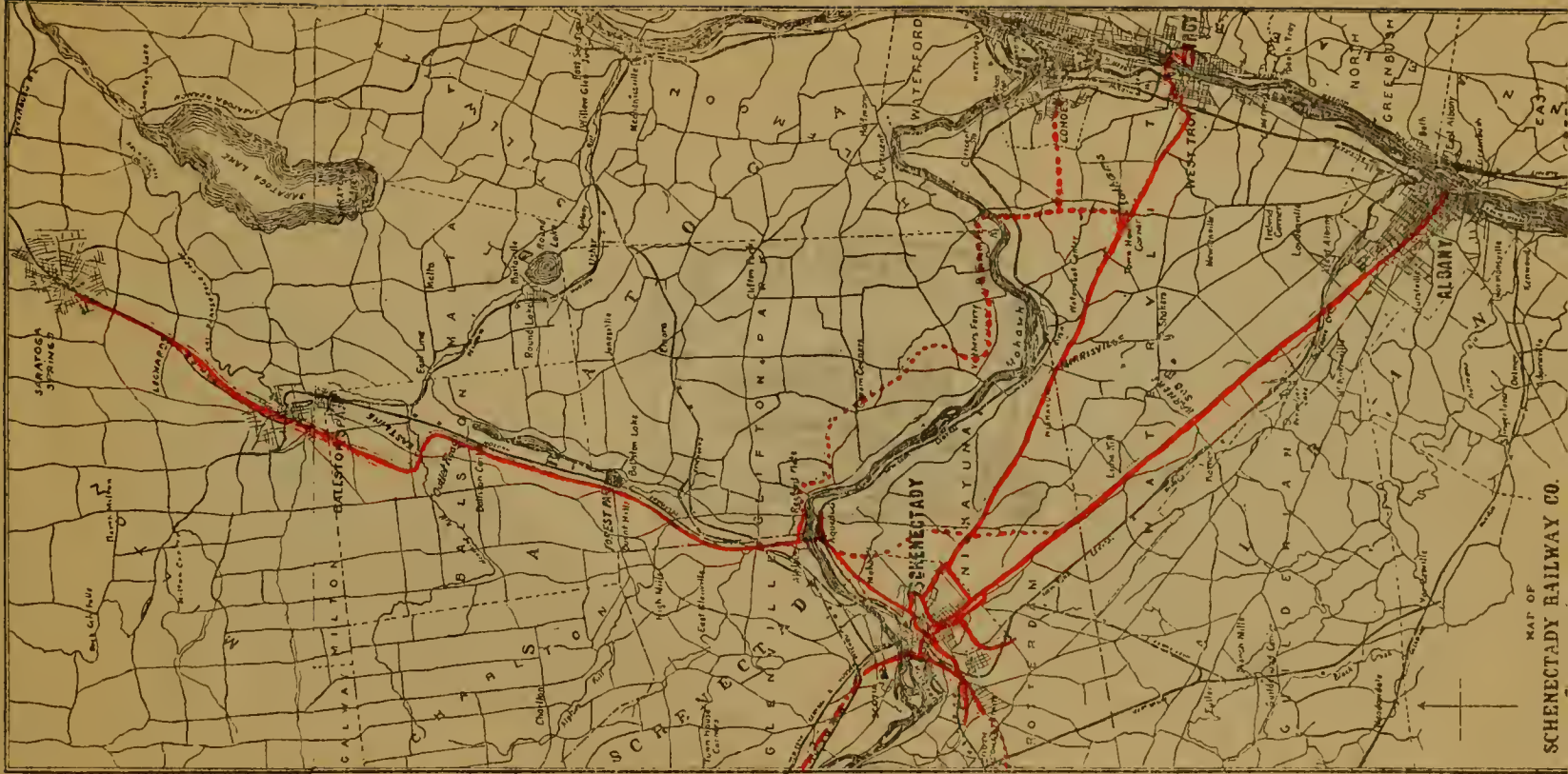
The undersigned having purchased all the interest of Nicholas Low, in the Village of Ballston Spa, now gives notice to the public, that he has taken possession of the above elegant Establishment, and has thoroughly repaired the same, and supplied it with new furniture. He has engaged kind, attentive and trusty servants, and Ladies and Gentlemen may be assured that the house will be kept in as good style and order as any establishment of the kind in the Union. He flatters himself that with renewed exertions, added to the former reputation of the house, its *pleasant and healthy location, the numerous Mineral Waters in its vicinity, and the exertions which will be made for the comfort, convenience and pleasure of the visitors,* that he shall receive that patronage which has been so liberally bestowed on the establishment for the last fifteen years, by visitants from all parts of the world. For the convenience of *calumniators*, there will be constantly kept in the house the different kinds of Mineral Waters produced in the neighborhood, in a pure state. His **LIQUORS** will be choice and select, the most of them having been in the cellar for many years. Several Lines of Daily Stages stop at the above establishment, and Coaches for parties, or single horses, can at all times be had on short notice.

As the undersigned intends to make this place his permanent residence, he solicits all at all times be open for the reception of company. A gentleman has been at great expense to put up the Establishment, and will use his utmost exertions to make the same pleasant, agreeable and inviting; he trusts that a liberal patronage will not be disappointed in him, nor be so done.

**H. TOOMER**

*Ballston Spa, N. Y.*

Packard & Van Benthuysen, Printers, Sign of Franklin's Head, 385 South Market-street, Albany.



MAT OF  
SCHENECTADY RAILWAY CO.



LIBRARY OF CONGRESS



0 014 432 769 A

