

F 127

.C3 C37



Catskill Mountain Summer Resorts

(I L L U S T R A T E D)



Containing Selected List of
Hotels, Boarding Houses and
Farm Houses
Where Summer Guests
Are Entertained.

Published by

American Resort Association

St. James Building, New York.

1902.

THE LIBRARY OF
CONGRESS,
TWO COPIES RECEIVED
JUL. 12 1902
COPYRIGHT ENTRY
July 12, 1902
CLASS *a* XXG. No.
38229
COPY B.

COPYRIGHTED BY
JOHN J. PRIAL, FOR THE
AMERICAN RESORT ASSOCIATION,
NEW YORK.

YRABUJ 1902

2210000 1902

CONTENTS.

Catskill Mountains Map..	6
Catskills, Early History..	9
Catskills, Topography, etc.	12
Summer Sense	17
The Spirit of the Moun- tains	19

Stage Lines connecting with Catskill Mtn. and Cairo Rys.....	48
Stage Lines connecting with Ulster & Delaware R. R.	49

RAILWAYS OF THE CATSKILLS.

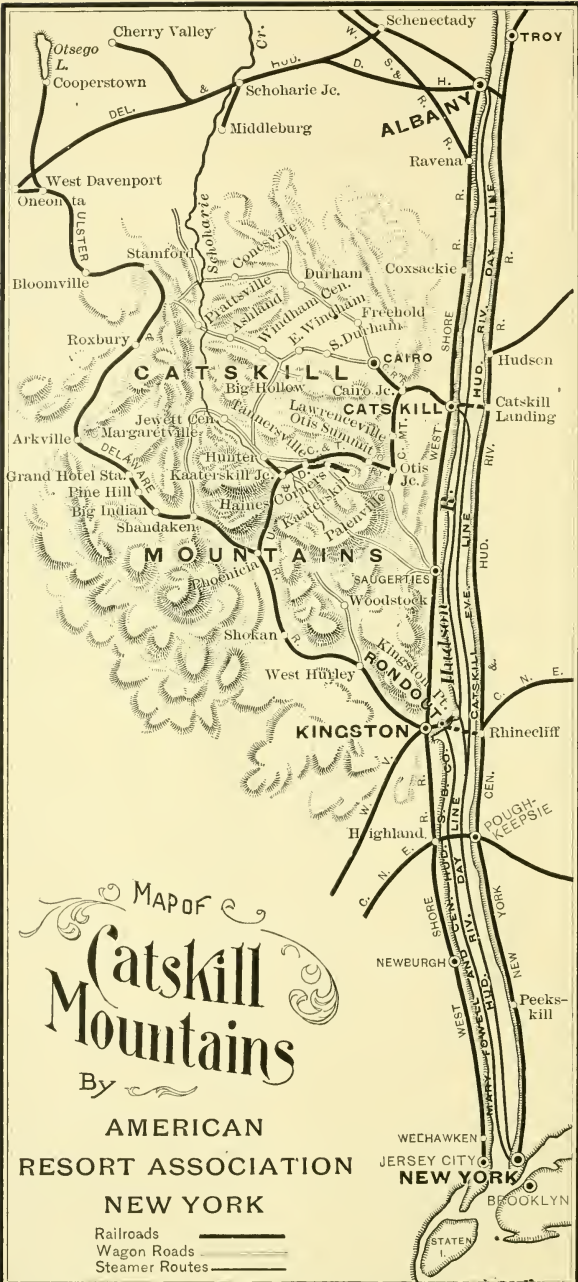
Catskill Mountain Rail- way	23
Ulster & Delaware Rail- road	23

CATSKILL MOUNTAIN RESORTS.

Big Indian	27
Cairo	27
Catskill	29
Catskill Mountain House	38
East Windham	30
Haines' Falls	31
Hunter	33
Kaaterskill Hotel	33
Kiskatom	34
Lexington	34
Margaretville	36
New Grand Hotel	36
Phoenicia	38
Pine Hill	40
Roxbury	40
Shokan	40
Stamford	42
Tannersville	44
Woodland	46
West Hurley	46
Hotels, Boarding and Farm Houses	52, 56
Rates from New York to Catskill Mtn. Points via various routes	50, 51

ILLUSTRATIONS.

Boulder Rock	34
Bridal Veil Falls	7
Catskill Creek	29
Colonel's Chair	32
Haines' Falls	8, 16, 37
High Peak	30, 35
Hotel Kaaterskill	34, 35
Hudson Highlands	10
Hunter	14, 32
Kaaterskill Falls	25, 76
Kaaterskill Lake	28, 35
Kaaterskill Ravine	45
Laurel House	76
Log Cottages	68, 73
Mountain House	22, 38
Observatory, High Peak..	40
Old Foot Bridge, Hunter	14
Onteora Park	39
Otis Elevating Ry., 18, 22,	24
Otis Summit	22
Panoramic Views of Cats- kills	13, 20, 39
Panther Mountain	41
Picturesque Log Cottage of the Catskills	73
Pine Hill	41
Round Top	35
Roxbury	43
Sphinx, The	9
Spray Falls	16
Squirrel Inn	37
Stamford, N. Y.	42
Stony Clove	76
Sunset Rock	15
Twilight Park	26, 68
Typical Log Cabin, Twi- light Park, N. Y.....	68
Wingate's Lodge	47



MAP OF
**Catskill
 Mountains**

By
**AMERICAN
 RESORT ASSOCIATION
 NEW YORK**

Railroads —————
 Wagon Roads —————
 Steamer Routes —————

P u b l i s h e r ' s A n n o u n c e m e n t

The object of this book is to say a sharp, insistent word for the Catskill Mountains; is to still further spread the fame of the Catskill region as an ideal and easily accessible place of summer rest and recreation.

This book is intended to provoke, first, interest, then inquiry. Within its covers will be found the salient features of the Catskills briefly stated and to the point, advertisements of many of the principal hotels and boarding houses, a word or two descriptive of some of the more prominent Catskill Mountain villages and favorite loitering places, and, finally, a most exhaustive list of places where summer guests are received, with particulars as to rates, capacity, special features and the like.

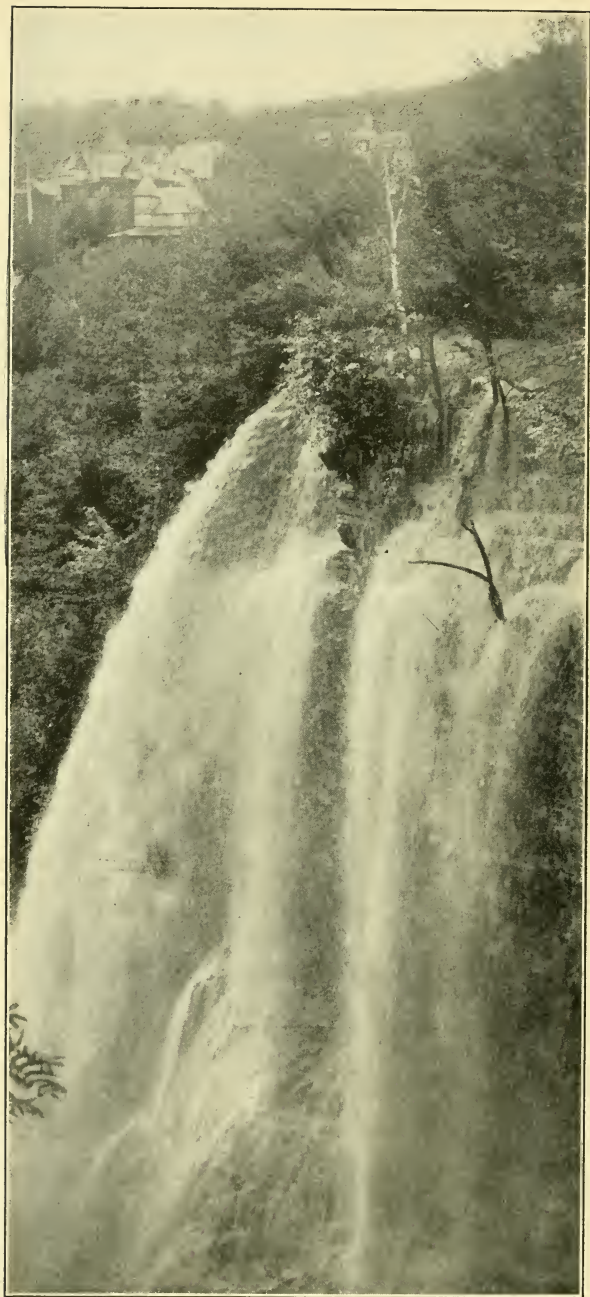
This book is but a first edition, and is far from complete and exhaustive, but, having once broken the ice, so to speak, and having received hearty welcome and encouragement, we hope in the edition of 1903 to widen its scope—in fact, to make it a complete, valuable and exhaustive handbook of the Catskills, all-inclusive and impartial, devoted to no special interest, but serving the Catskills and their many interests as a whole.

A M E R I C A N R E S O R T A S S O C I A T I O N ,

**Room 905, St. James Building,
26th Street and Broadway,**

New York City.

June 1st, 1902.



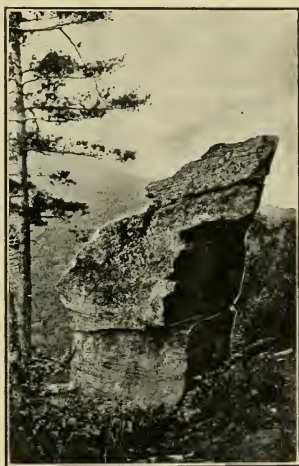
BRIDAL VEIL, HAINES FALLS.

THE SERENE CATSKILLS.

EARLY HISTORY.

In 1609 Hendrik Hudson, with his square Dutch boats, sailed up the noble Hudson, bent on discovery. He saw the beauty of the river, was without doubt entranced by the Highlands; but after a voyage of about ninety miles from the mouth of the Hudson (New York Bay) the Catskill Mountains dawned upon him in all their lofty, serene and silent beauty.

“Ah!” said Hendrik, “we must investigate this!” And he



THE SPHINX, HAINES FALLS, N. Y.

did. Lowered sail, dropped anchor, went ashore, dined and palavered, dumb-fashion, with the Indians he found there, and prospected generally. Such is the first historical mention of the serene Catskills. For centuries—how many none can guess—these mountains had been the haunt of the swarthy red men, and were unknown of the white race until Hudson stopped there. And for sixty-nine years after Henry’s historical dinner the red men were left in undisputed possession of their fastnesses.



UPPER ENTRANCE OF THE HUDSON HIGHLANDS.

Then, the sixty-nine years being passed, we have to notice an important matter; in fact, nothing less than the formation of a syndicate by certain Dutch and English gentlemen. Their design was to buy outright the Catskill region. There was, without doubt, much negotiation, and finally the poor redskins, for paltry price—principally eye-tickling trinkets and the like, of wonderful seeming value to our now extinct friends, but, as a matter of fact, of no intrinsic worth whatever—consented to sell their mountain domain; and the deed was finally and formally done on July 8th, 1678, at the Stadt Huis at Albany. Mohak-Neminaw and six of his chiefs signed the contract, and one can readily fancy that much tobacco and fire-water marked the business. And, after that, slowly, year by year, the Indians retired farther and farther into the interior, Adirondacks and the like, to make way for the Dutch settlers. So we see a vast wilderness, the heart of it once known only to hunting and warring Indians, gradually settled by thrifty Dutch, and, in the favorable parts,

made to grow various farmstuffs and fruitstuffs. Long after, the mountains, in parts, were blasted for the beautiful granite that was in them, and which in our day has found lodgment in many classic buildings in New York and other cities.

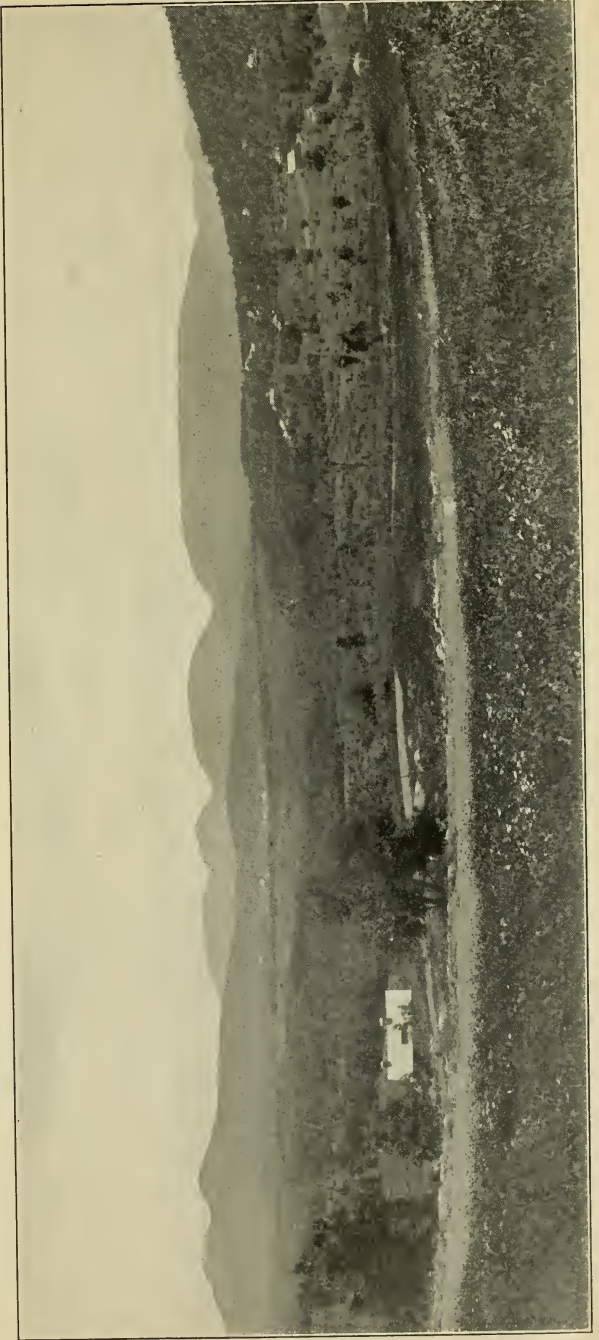
Such is the emergence of the Catskills; first the home of the Onteoras—Onteora meaning Hill of the Sky; how beautiful, much more so, in fact, than the name Catskill—then espied by Hudson in 1609; next purchased by a syndicate of Dutch and English in 1678. From that year, and say for 150 years thereafter, we have the unruffled Dutch, and later, the more active and polished Colonial life, with farming, with expanding thriving villages and bits of towns coming into being here and there at certain natural gathering points. It is also certain that, year after year and always in increasing numbers, many a bold spirit penetrated into these wild mountains for rough sport, for the hunt and in quest of the finny tribe. Thus these Cauterskill Mountains slowly came to fame as a region rich and rare for fishing and hunting and for dreaming away the summer days. And finally, about fifty years ago, this fame blossomed into world-wide repute and the Catskills stepped into line as a peerless summer resort known to all men.

So popular did they become that, in 1866, the railway folks determined to conquer them and to at least partly replace the stage-coach and the farm wagon with speedier and more comfortable transport; so, in that year, ground was broken and the wholesale conquest of the mountains was commenced. The task was a difficult one; a task, in fact, by many believed impossible, and, indeed, of a nature to call for heroic feats of railway engineering. But necessity and talent and capital were not to be denied, and by 1874 the Ulster & Delaware Railroad had stretched its sinuous, steely length from Kingston to Stam-

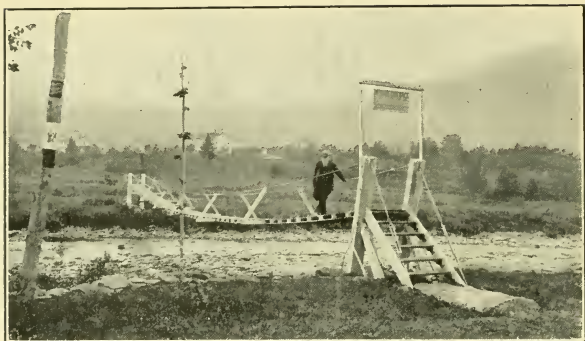
ford, and in 1890 to Oneonta, a distance of 108 miles. And, in after years, as traffic still further increased, the road was in 1899 rebuilt, strengthened, straightened and brought up to the first-class status in which it now is. Thus we have a southern gateway, which inspired the idea of opening up the northern section of the mountains, and a few years after the birth of the Ulster & Delaware Railroad the Catskill Mountain Railway was projected, and its line was forced through the northern part just as the Ulster & Delaware had been planned to open up the southern part. And thus we have two main arteries through the mountains, two great public gateways through which many millions have passed.

TOPOGRAPHY, ETC.

The Catskills contain roughly 2,400 square miles. They lie ten miles back, that is, west of the Hudson River, and extend north and south about twenty-two miles, from Kingston on the south to Catskill on the north. So that they might well be enclosed in an imaginary frame twenty-two miles up and down and 100 miles east and west, that is, across. They are divided into two ranges by a creek called Esopus. The western slope of the mountains is drained by the Schoharie Creek and its many tributaries, which carry the waste of waters into the Mohawk River, and that stream, after wandering 175 miles, finally throws them into the Hudson. The northern range of mountains is watered largely by Catskill Creek. The mountains, in altitude, average 3,000 feet, the highest point being The Slide, 4,220 feet, with Hunter Mountain second, 4,052 feet. In this vast Catskill tract are scores of isolated, individual peaks, and awful earth-paroxysms took



MOUNTAIN VIEW IN THE HUNTER VALLEY.



OLD FOOT BRIDGE, HUNTER, N. Y.

place there in the dim centuries—a gigantic upheaval—and we see to-day the diversely beautiful result, 2,000 square miles of mountain and valley, hill and plateau, all studded, yea, honey-combed with stream, with “kill” and brook and waterfall—marked everywhere with lucent leaping waters, dotted here, there and yonder with sapphire-blue lakes.

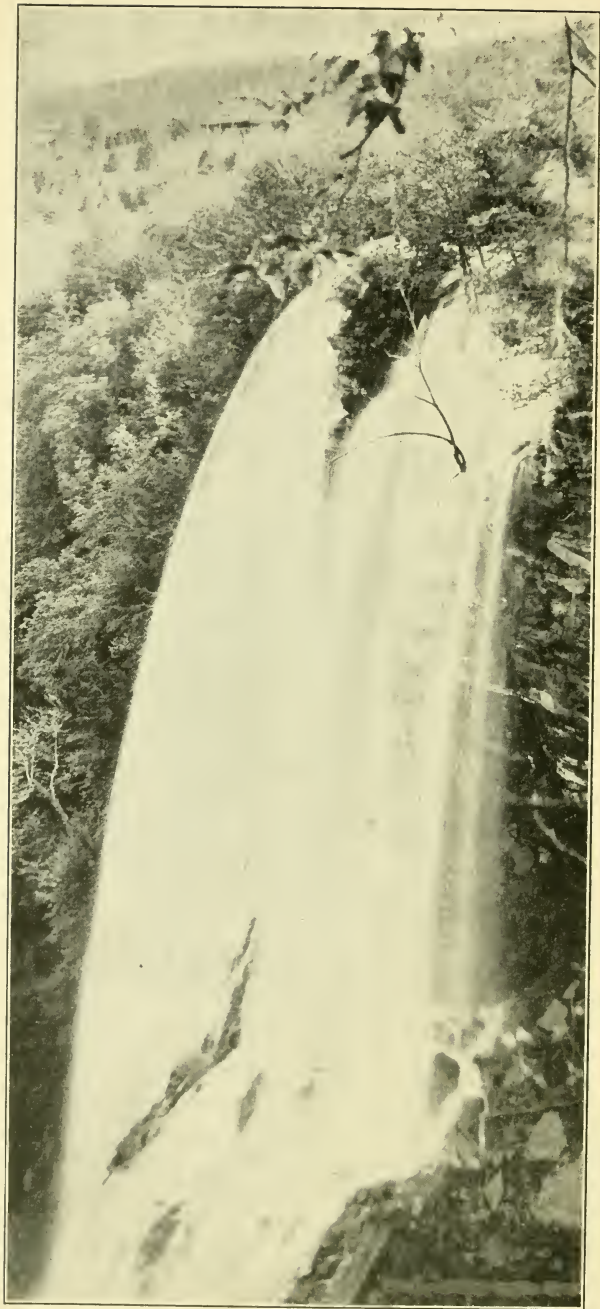
The origin of “Catskill” is nebulous, is encrusted with tradition and theory. The mountains, from time to time, have had many names, as Catskill, Kaaterskill, Kaatsberg, Cauterskill and the like, kill meaning creek and berg meaning mountain. But, for logical and accepted origin, we go to the sturdy Dutch and get Kat for cat and kill for creek; cats and creeks; land of creeks and cats—whether tame cats, wild cats or catamounts, all is now lost in fog. And, in the final analysis, and for everyday use, we have finally accepted the short sharp Yankee Catskill.

And there you have the Catskills fairly before you—a section 22 by 100 miles, roughly 2,400 square miles; to the east facing the Hudson and plainly seen from that river, lying ten miles back from it; a health and pleasure acreage now of world-wide fame, the mecca, each summer, of hundreds of thousands of people; entered by way

of Catskill on the north and Kingston on the south; reachable, each of these points, by two steamboat lines and by two great railway systems, said railways, with their ramifications, bringing the Catskills to the very doorsteps of millions of people, north and south, east and west; said lines so hot for business and so well able to care for it that they will take you up at your home station and land you unruffled at either of the two gateways of the marvelous mountains. Or, better still, they will, without change of car, put you down directly at the very verandas of mammoth, palace-like mountain-top caravansaries, gigantic, grandiose summer hotels—hotels that are unsurpassed, perhaps unequaled, anywhere in this world; carry you direct to these great show places or to a hundred quieter semi-grand hotels, and, forget it not, also to 5,000 homes, each ready to house you in the summer days.



FROM SUNSET ROCK.



SPRAY FALL, HAINES FALLS.

SUMMER SENSE.

That annual function of civilization called vacation—vacate: to get out; to get away—like all things, has had its evolution, and, among clever people, it has become somewhat of an exact science. It is no longer an idea; it has become a project—something to be well planned, something to be well thought out. In the old days vacation simply meant a going somewhere, anywhere out of town; meant usually unrest, discomfort, with a return to town most probably in a washed-out and unsatisfactory condition. Now vacation means something really sane, enjoyable and profitable. To youth it means a pleasurable outing, a visit to a grand or half-grand hotel, with rowing, dining and dancing, with golfing and tennis and all the rest of it, the fair sex and the brave sex mingled, of course, in due and pleasurable proportion. To the merchant, the busy man worn with affairs, his brain and body gone threadbare, vacation has come to mean rest, absolute unbroken rest. To another class of man vacation means the gun, and the rod and the whipping of streams; to the boy, opportunities for all sorts of outdoorism, that the blood may be reddened and thickened and the muscles made hard; and, finally, to the invalid, vacation suggests cool, gentle breezes, and golden sunshine and deep healing sleep. All this has vacation come to mean.

And again, without going into the physiology or hygiene of summer vacationing, let it be accepted as a common-sense fact that the basic beneficial factor of it is change, and people who

ordinarily live in the salt-water zones should recreate in the mountains, and those who live deeply inland for most part of the year should, in the summer days, set themselves down hard by the sea. This exchange of sea air for mountain air, or vice-versa, is now the accepted theory and practice among all hygienists. So, for the millions of Baltimore, Philadelphia, Boston, Washington, Brooklyn, New York, and all the country contiguous and neighboring to those and to all other sea cities, their wisest refuge in



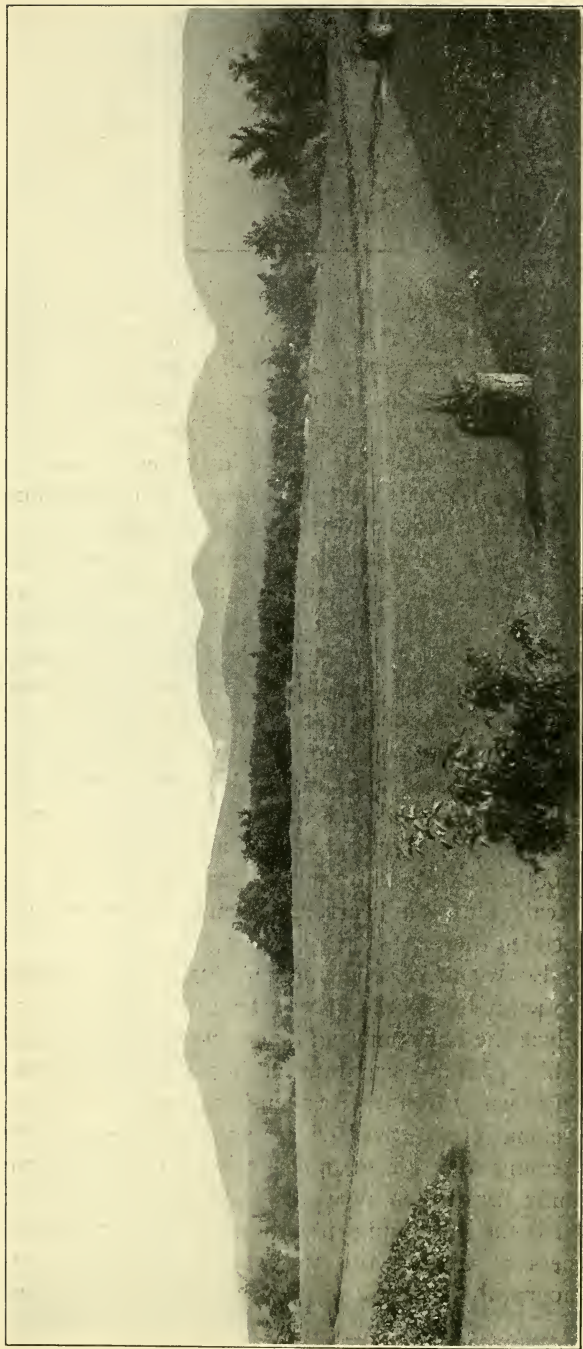
LOOKING DOWN THE OTIS ELEVATING RAILWAY EN ROUTE
TO OTIS SUMMIT.
HUDSON RIVER IN DISTANCE.

summer, their absolutely perfect place of recreation, if they would really enrich and strengthen the mental and physical fabric, is in the mountains, there to spend the summer or such portion of it as may be on mountain peak, on lofty plateau, while airs of heaven-born purity, energized by the primeval forest, pour into them grace and peace and fulness. Such is the ideal, the hygienic, the profitable vacation; and the sons of men are learning this more so year after year, by the tens, yea by the hundreds and many hundreds of thousands.

THE SPIRIT OF THE MOUNTAINS.

For hundreds of years, indeed, it may be said, since the birth of letters and articulate speech, all manner of men have attempted to put into words, vocal or written, impressions of mountain life; have endeavored, in poetry or in prose, to tell the world what they felt on the lofty heights and in the dark-green valley-shadows, what emotions were called into life there. Many have tried to do this for the Catskills, but no one has ever fully discharged his task; no one has ever made clear the feelings that well up in the heart of the mountain dweller or the mountain visitor, the many complex humors and fancies, a new, a different one for every change of scene, for each hour of the day. Nor will any man ever adequately paint all this. These mountains, any grand range of mountains, speak a different language to each human soul. And that message, that music is not to be fully uttered; it can only be felt; it steals into the heart and remains forever embedded there.

So we at once dismiss as futile any attempt to paint the picture, any attempt to detail or analyze the harmonies and symphonies of the Catskills. All we can hint at here is the everlasting beauty of these heaven-high peaks, the marvelous views over river and valley—the eye leaping afar off to other mountain peaks, some fully fifty miles away. All we may briefly hint at is the life-giving mountain air, the airy sunniness of midday, the gray, long-shadowed afternoons, the gradual mysterious twilight, the royal



A TYPICAL CATSKILL VIEW.

sunsets, followed, at last, by the magic of night, with its deep, cool solitude—night made for rich, silent meditation, or for music and the dance; made for the soft plash of the oar on moonlit lake or for glimpse of magic waterfall tumbling madly and musically, all feather-white, into chaos.

What genius could tell the whole of this story? What musician sing it? What poet could properly portray it? A thousand painters in a thousand years would have only just begun. So we shirk this task as one impossible. Each must go into the mountains for himself, must steep his soul in their dewy mornings and marvelous nights. In such way only may he catch something of the spirit of the mountains, catch it at first hand and hold fast to it as something very noble, something very memorable.

RIP'S ROCK.

High upon old Kaaterskill's crest
Is a rock, where one may rest
Safely hid from hue and cry;
Henpecked husband, hither hie.

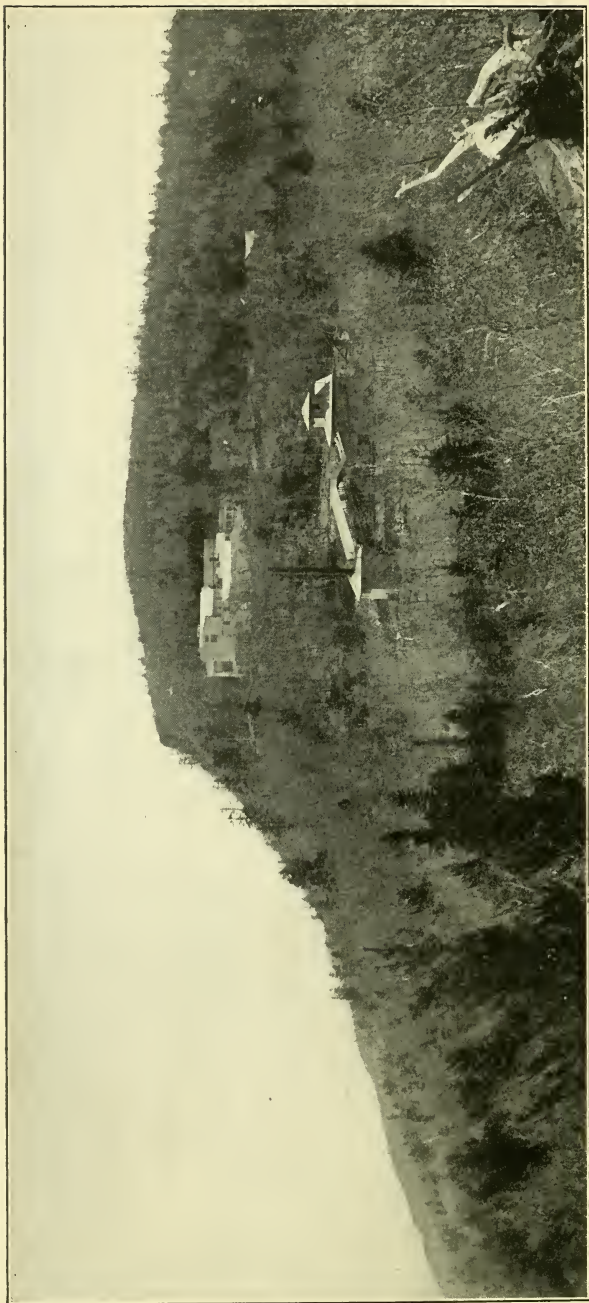
Come with musket, pipe and prog—
Call some other fellow's dog;
Lest you miss old Hudson's crew,
Better bring a flagon, too.

Grievous ills thy musings mar,
Broomsticks, mops, etcetera;
Spite of time, or place, or name,
Woman's ways remain the same.

Flee from endless days of work,
Flee from tasks that thou wouldst shirk;
Peaceful dream the time away,
Sleep forever and a day.

In this shade of sweet repose
Mortal man forgets his woes
And fulfills his destiny;
Henpecked husband, hither hie.

—*Laura Sanderson.*



POWER HOUSE OF OTIS ELEVATING RAILWAY AT OTIS SUMMIT. MOUNTAIN HOUSE FROM THE NORTH.

RAILWAYS OF THE CATSKILLS.

NORTHERN GATEWAY.

From Catskill we have the Catskill Mountain Railway, extending west to South Cairo, branching north over the Cairo Railroad to Cairo, from which point stage lines take the summer resort seeker to the many towns in that section. From South Cairo the Catskill Mountain Railway goes north, stopping at Otis Junction for passengers going up the Otis Elevating Railway to Otis Summit. The western terminus of the Catskill Mountain Railway is Palenville, 16 miles from Catskill. Upon reaching Otis Summit by the Otis Elevating Railway the trains of the Catskill and Tannersville Railway are in waiting to take passengers to the Laurel House, the Antlers, Haines' Corners, Tannersville, etc., this line running parallel with the Kaaterskill branch of the Ulster & Delaware Railroad for a few miles between Laurel House Station and Tannersville.

SOUTHERN GATEWAY.

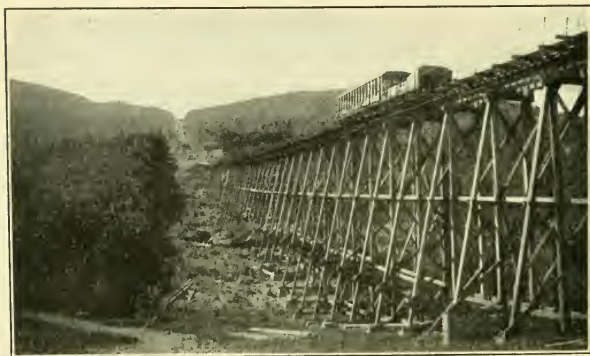
From Kingston the Ulster & Delaware Railroad extends from Kingston Point on the Hudson to Oneonta, 108 miles to the northwest, with the Stony Clove branch, extending from Phoenicia north to Kaaterskill Junction, where the Hunter branch extends west to Hunter, and the Kaaterskill branch east to Kaaterskill, the branch terminus of that division.

The summer aspect of a Catskill town is: Neat station; neat main street; all sorts of vehicles at station, in front of principal hotels and brushing up and down the highways, vehicles filled with passengers or looking for the same; towns well swept, well kept; filled with soft summer stillness, and over all a half-subdued gaiety. All things restful, cheerful, reposeful.

General average altitude of Catskills, 3,000 feet. Highest peak, The Slide, 4,220 feet. Next highest, Mount Hunter, 4,052 feet. Until a few years ago Hunter was supposed to be highest, but surveyors one day robbed it of its unmerited fame.

In the Catskills many hotels are situated on plateaus from two to three thousand feet above sea level, and, when seen afar off or from the lowlands they look like cardboard houses, mere children's playhouses, set way up on high near the sky.

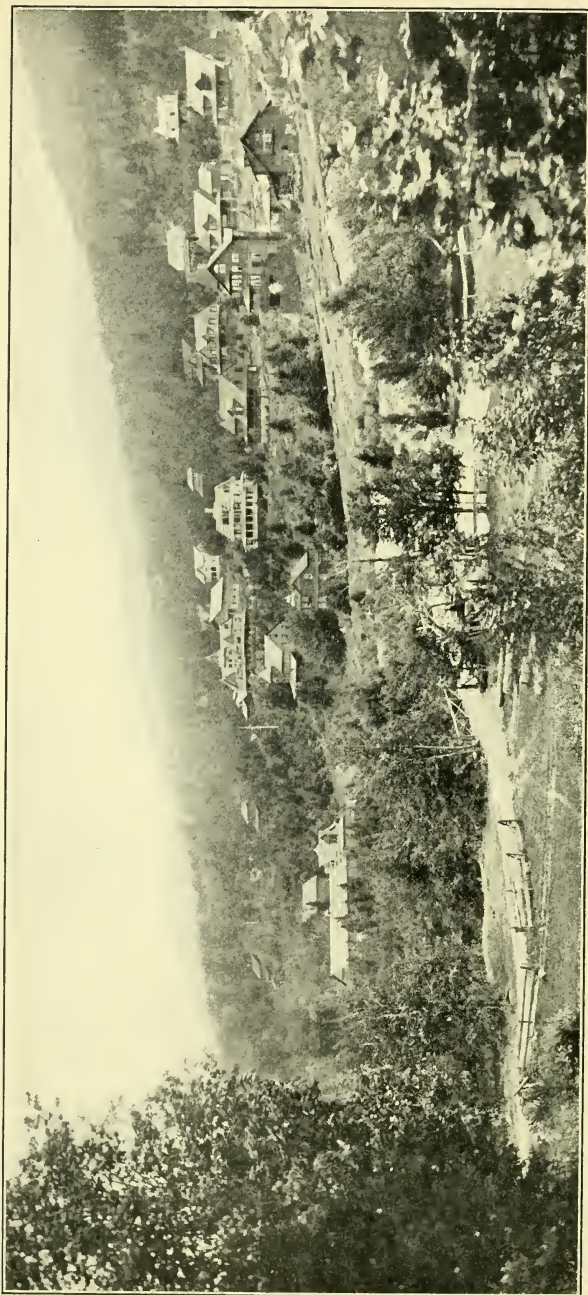
The Catskills are an accredited part of the Appalachian range, which extends from Maine to Mexico. This same range is known in New Hampshire as White Mountains; in Vermont, as Green Mountains, and in Pennsylvania-Maryland it is called the Blue Ridge.



LOOKING UP THE OTIS ELEVATING RAILWAY.



KAATERSKILL FALLS.



TWILIGHT PARK, N. Y.

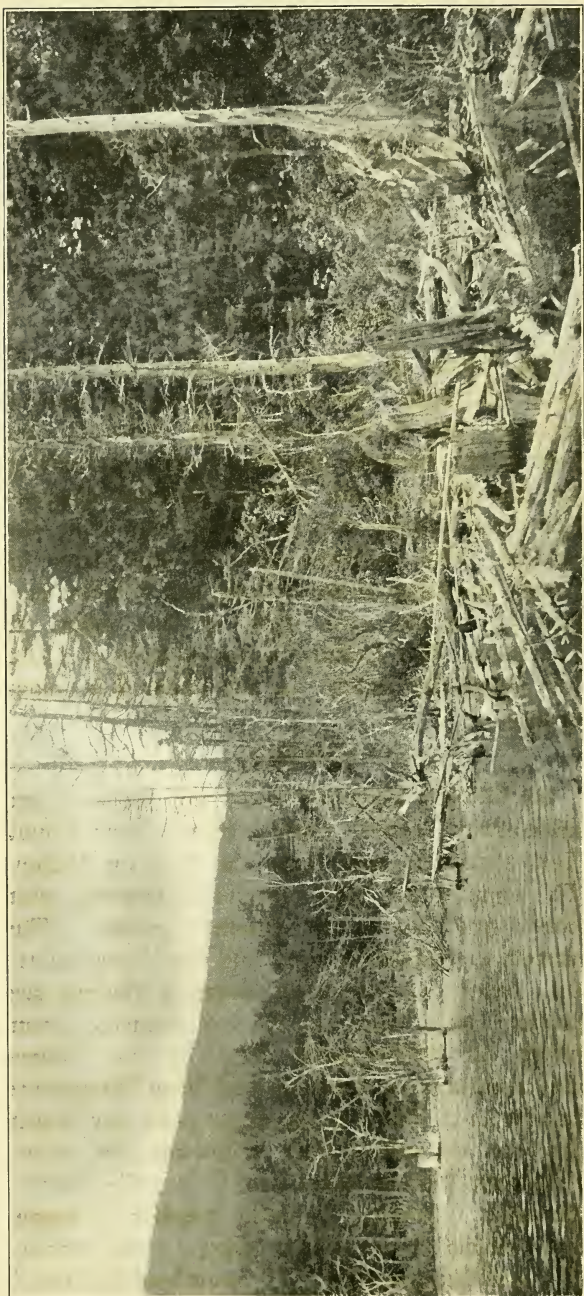
CATSKILL MOUNTAIN RESORTS.

BIG INDIAN.

On Ulster & Delaware Railroad, 36 miles from Kingston. Notable for being the nearest railway point to the great Slide Mountain, the peak of the Catskills nearest the sky, and parties for the Slide summit and its topmost observation tower usually start on the journey from Big Indian. The mountain-climbers may drive to within five miles of the summit, and it is the custom to remain over night at this point, at Dutcher's. Big Indian has an altitude of 1,202 feet above sea water. In and about it is much beauty.

CAIRO.

On Catskill Mountain and Cairo Railway, ten miles from Catskill. Cairo is located near Round Top Mountain and faces the Hudson Valley. The country for miles around is covered with hotels and homes for summer guests. The scenery is wild and rugged and the drives beautiful. Many of the places adjacent thereto are perched, as it were, on the mountainside, from which an unobstructed view of the valleys and mountains of Vermont and New Hampshire can be had. Cairo is the stage point for South Durham, six miles; East Windham, ten miles; Windham, sixteen miles, and Prattsville, thirty-six miles. Judging from the number of stages and vehicles at the station when a train arrives, one would imagine that "All roads lead to Cairo."



KAATERSKILL LAKE.

CATSKILL.

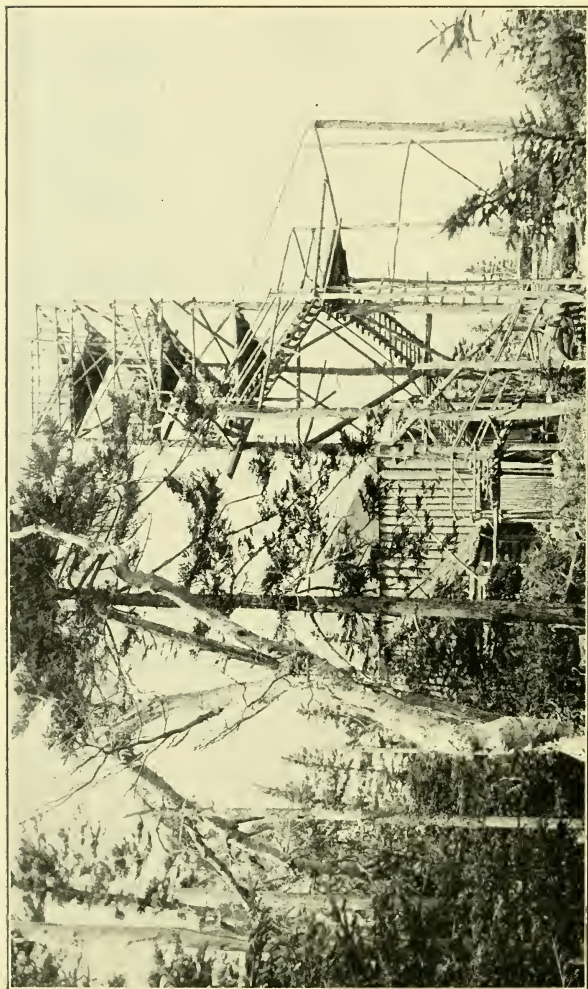
The Northern Gate; a pretty village on Hudson River, 111 miles from New York City. Reached from north and south by West Shore Railroad and Hudson River Day Line, and from the south by the Catskill Evening Line. Directly across the river, on east bank of Hudson, there is also a station on the New York Central called Catskill Landing, from which point ferry runs across to Catskill proper, making connections with boats and with the Catskill Mountain Railway. Many people stop at Catskill, for from this place you can look up at the mountains. Some people prefer to look down from the heights, while others rejoice in looking up at them. Catskill gives the latter view. Besides, you are close by the noble, flowing Hudson. The village rises direct from the river, terrace upon terrace, and these are dotted with many hotels, and from any part of Catskill one can sweep the entire eastern front of the mountains, some twenty-odd miles.



CATSKILL CREEK.

EAST WINDHAM.

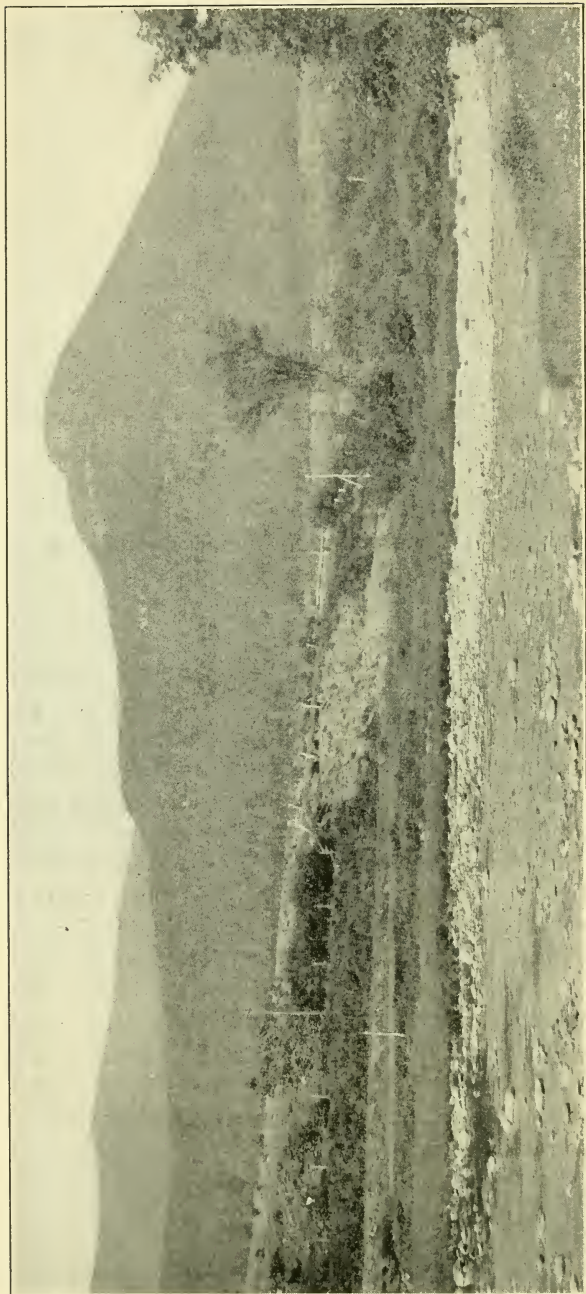
Ten miles from Cairo. This place is located on the northern bluff of the mountains, at an elevation of about 2,500 feet and overlooks the country for many miles. On a clear day the Green Mountains of Vermont and the White Mountains of New Hampshire can be seen from this place. It is reached by stage from Cairo, a distance of about ten miles.



OBSERVATORY, HIGH PEAK.

HAINES FALLS.

Haines Corners Station, 43 miles from Kingston, on the Ulster & Delaware Railroad, and about fourteen miles from Catskill, on the Catskill and Tannersville Railway. It is also made by stage from Catskill. The elevation is nearly 2,000 feet. The place is filled with modern and comfortable hotels, cottages and farmhouses. This place is at the head of the famous Kaaterskill Clove, which surpasses in beauty and scenic effect any other spot in the Catskills. It is in this clove that the impressive Haines Falls, which have occupied the attention of many artists, can be seen. The falls at first make two leaps, one of 150 feet and another of 80 feet, followed by a still further fall of 60 feet; thus it goes on, so that in the first quarter of a mile you have a drop of no less than 475 feet. From Haines Falls, a wide ravine, the Kaaterskill Clove leads to the plain below. In this ravine are Fawn Leap Falls. Adjacent to the falls, on the massive slope of Mount Lincoln, which points heavenward 3,664 feet and forms the mammoth south wall of the clove, several parks have been laid out, among them Sunset Park, Twilight and Santa Cruz. In these parks are some very artistic private dwellings, clubhouses and hotels of an exclusive nature. From Twilight Park one can look out between the mountains and see the Hudson and the country lying beyond, a scene which, for variety of beauty and impressive grandeur, beggars description.



COLONEL'S CHAIR, HUNTER, N. Y.

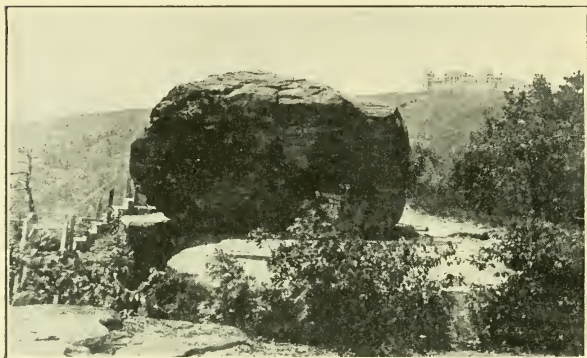
HUNTER.

A solid town at the terminus of the Kaaterskill branch of the Ulster & Delaware Railroad, 40 miles from Kingston. Is situated in a most charming valley, a big, broad, windswept valley,—in fact, one of the breeziest places in the mountains. The general elevation is about 1,700 feet. The village is one and one-half miles long and the main street is lined with neat houses, surrounded by well-kept and shaded lawns. The Schoharie Creek flows through this place and adds a charm to the scenery. Hunter and vicinity can fairly be called the heart of the Catskills, and is a delightful place to spend the summer. Some of the most famous peaks in the mountains, notably "Colonel's Chair" (3,165 feet), can be seen from this village. There are miles of fine roads in this section and many favorite drives—to Lexington, nine miles; Hensonville, seven miles; Windham, eleven miles; East Windham, thirteen miles. These places can also be reached by stage from Hunter.

HOTEL KAATERSKILL.

Kaaterskill Station, on the Ulster & Delaware Railroad, or Otis Summit Station, via Catskill Mountain and Otis Elevating Railway. One of Catskill's most famous summer palaces, a place of great interest even to world-wide travelers. The hotel is situate 3,000 feet above the sea, can accommodate 1,500 guests, has thirty miles of roads and owns its own lake, the Kaaterskill. One of its show points is the famous Sunset Rock, a bit of bare table-land overlooking Kaaterskill Clove, a sheer descent of 1,500 feet. Directly opposite Sunset Rock is Kaaterskill High Peak, 4,000 feet, showing in full green broadside. The Kaaterskill Hotel and its surround-

ings was a most ambitious dream, and the fancy of its projectors has been realized to the last letter. It is famous all over the country, and, in fact, is well known to many Europeans, and in recent years, under the most efficient management, ranks as one of the best mountain resorts in America.



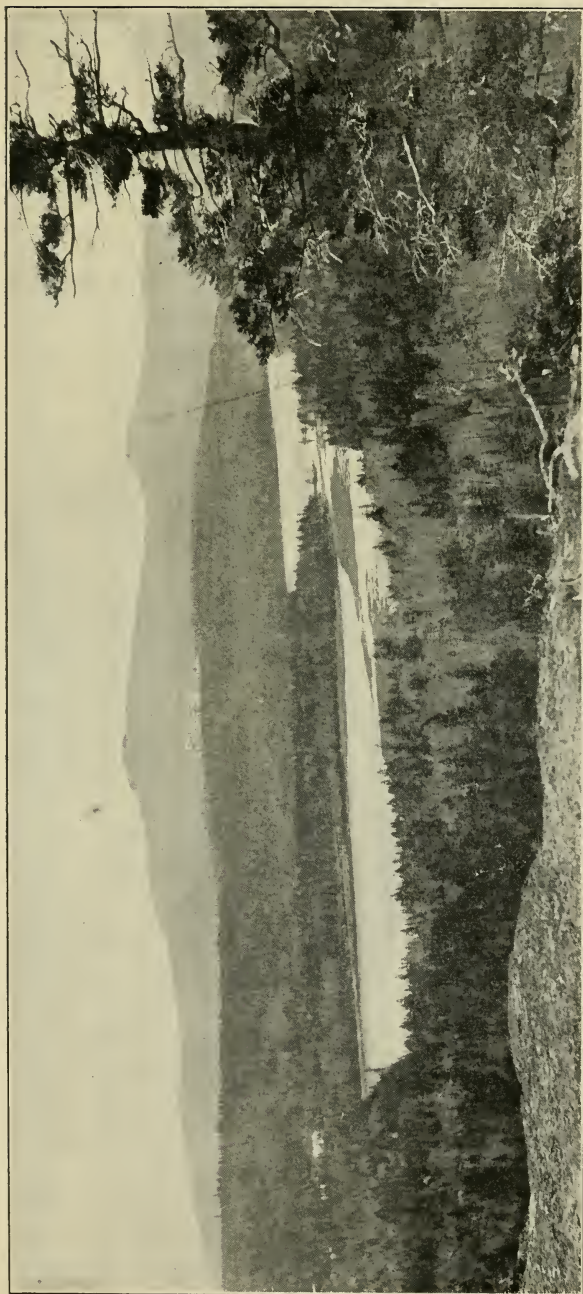
THE BOULDER. HOTEL KAATERSKILL IN DISTANCE .

KISKATOM

Is located about seven miles from Catskill and one mile and a half from Lawrenceville, on the Catskill Mountain Railway, and commands an impressive view of the eastern side of the mountains. At this point the Kaaterskill assumes large proportions, and boating, fishing and bathing are favorite pastimes for guests who spend the summer at this place. There are many beautiful groves here, and altogether it is a summer retreat of varied attractions.

LEXINGTON.

Nine miles by stage from Hunter, and is a quiet, reserved summer resort. It has a number of good hotels and up-to-date farm houses.



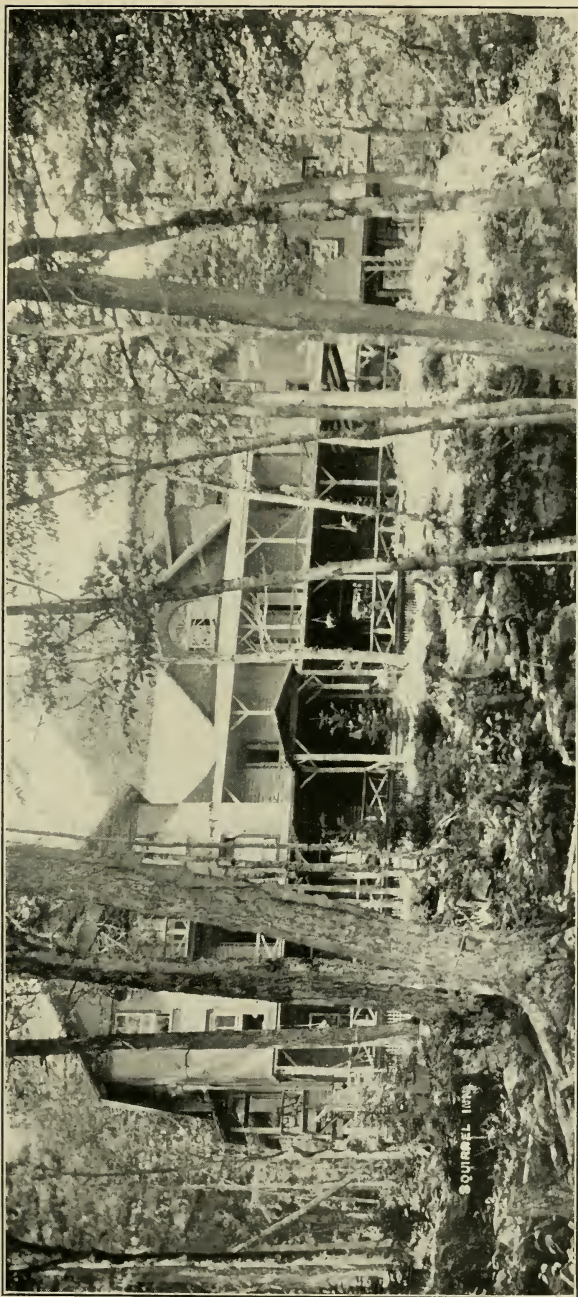
KAATERSKILL HOTEL AND LAKES. ROUND TOP AND HIGH PEAK FROM NORTH MOUNTAIN.

MARGARETVILLE.

One and one-half miles from Arkville, on Ulster & Delaware Railroad; 46 miles from Kingston. A most attractive resort, situated on the last fork of the Delaware River and at the foot of Mount Pahatakan. Margaretville has been a favorite summer spot for years. Altitude, 1,500 feet; overlooks the beautiful Delaware Valley. Roads are of the finest. The Delaware affords ample opportunity for swimming, boating, fishing and all the water sports. In Margaretville is the half-mile track of the Catskill Mountain Agricultural Society, and the annual August affairs held under the auspices of this organization are a feature of Catskill Mountain summer life. Within a short distance of Margaretville is Perch Lake, mile long, half-mile wide, a favorite place for fishing and picnicking.

NEW GRAND HOTEL.

Railway point, the Grand Hotel Station, on Ulster & Delaware Railroad, 41 miles from Kingston. This magnificent hotel is immense, palatial and given over to all sorts of recreation. You are to especially notice three band concerts daily. Is one-eighth of a mile from station, and at this place the Ulster & Delaware Railroad reaches its highest point, 1,899 feet above the smooth-flowing Hudson. The new Grand is situated on the Summit Mountain; altitude, 2,500 feet; has a frontage of 650 feet, from which you can readily imagine its magnitude and its various magnificences. Summit Mountain is the center of a family group, so to speak, among which are Belle Air, Panther (4,000 feet), and, nearby, the climaxical Slide.



SQUIRREL INN, HAINES CORNERS, N. Y.

OTIS SUMMIT.

CATSKILL MOUNTAIN HOUSE.

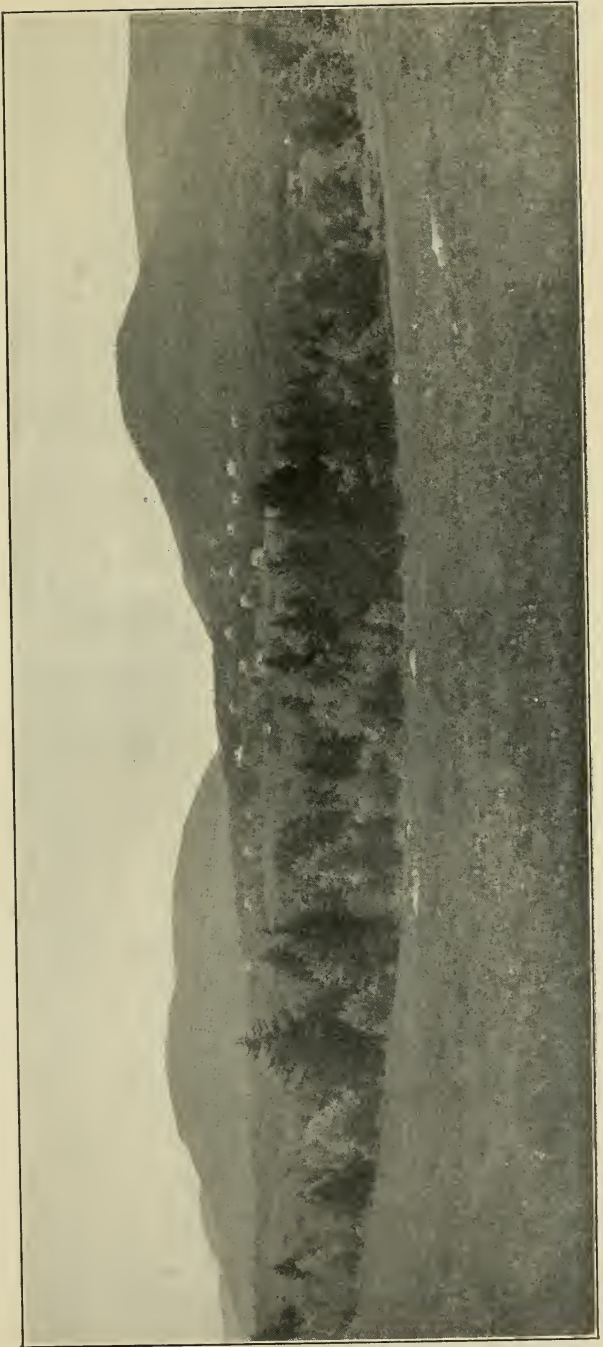
Just up a flight of stairs from the Otis Summit Station of the Otis Elevating Railway, or a short drive from Kaaterskill Station on the Ulster & Delaware Railroad. Is located on east ledge of the mountain, 2,250 feet above tidewater. To the east is the Hudson Valley; to the north the Adirondacks. From this lofty eyrie one can also see the Green Mountains, the Berkshire Hills and the Hudson Highlands.



CATSKILL MOUNTAIN HOUSE.

PHOENICIA.

On Ulster & Delaware Railroad, 27 miles from Kingston. Altitude, 800 feet. Is a considerable resort; starting-out point for Hunter and Tannersville, the way leading through Stony Clove, a remarkable ravine. The view up the Shandaken Valley is most beautiful, and afar off is to be seen Lake Mohonk Gap, also a group of sky-piercing peaks, including Wittenberg and the Cross Mountains.



ONTEORA PARK.

PINE HILL.

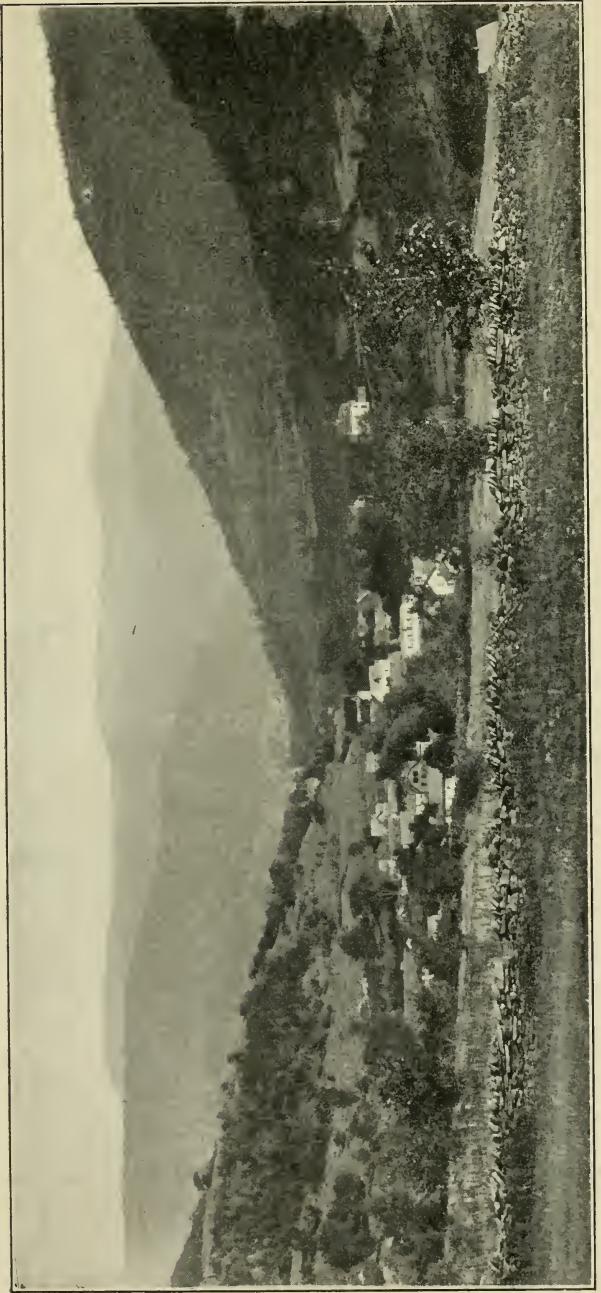
On Ulster & Delaware Railroad, 39 miles from Kingston. This town was built after the railroad had penetrated the mountains, and its projectors had in mind all those factors which go to make a success of a summer resting place. It is one of the most popular and one of the most talked about places in the Catskills. Situate at an altitude of 1,889 feet. Is a solid village, with quite impressive stores, with good roads and all the features of the substantial town, the town that has come to stay and to grow. Just beyond Pine Hill is one of the star features of the Catskills, the famous Horseshoe Curve of the Ulster & Delaware Railroad. Another incidental point about Pine Hill is its location near the new Grand Hotel, two miles by rail, less than that by road. This hotel is, of course, a great show place, and the villagers and their guests often go there to hear the music, to see the sights and get a touch of high life.

ROXBURY.

A quaint and familiar town over a century old, some 1,500 feet above tidewater, 60 miles from Kingston on the Ulster & Delaware Railroad. A popular vacation village, with churches, schools, stores—many good drives and walks. The maple product of this popular town has given it a certain fame.

SHOKAN.

On Ulster & Delaware Railroad, 17 miles from Kingston. Picturesquely situated on a mountain gallery, through which Esopus rushes in the form of picturesque rapids. From Shokan one may view High Point Mountain, 3,100 feet. To the west are Wittenberg and Mount Cornell.



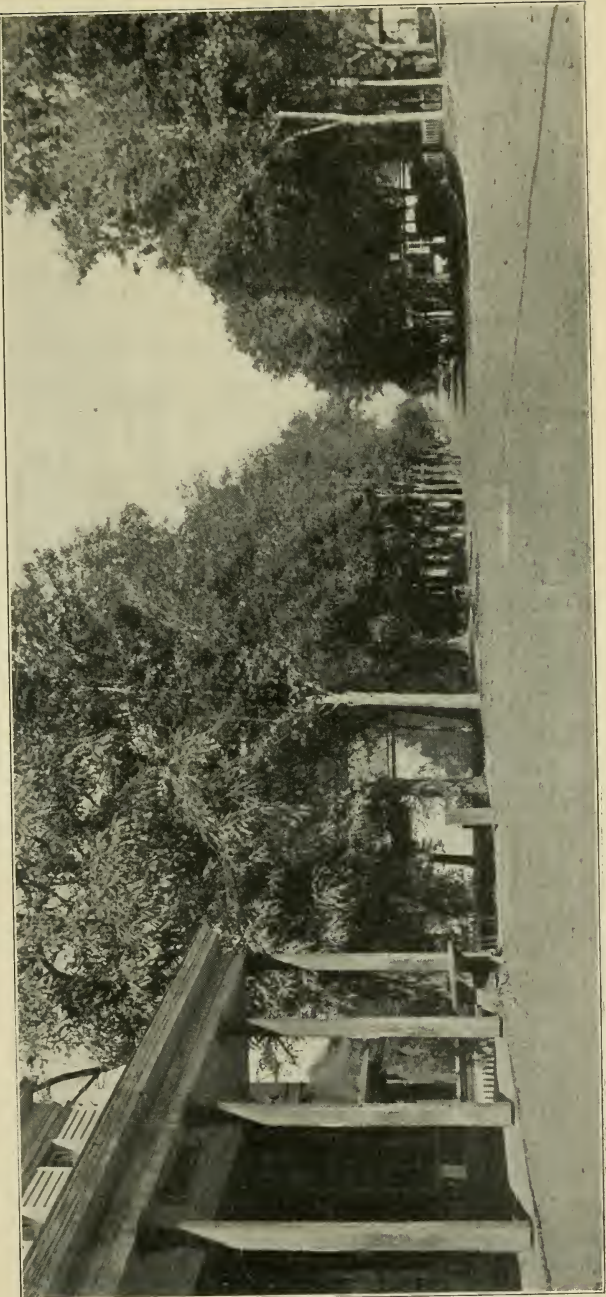
PINE HILL, N. Y. PANTHER MOUNTAIN IN DISTANCE.

STAMFORD.

On Ulster & Delaware Railroad, seventy-two miles from Kingston. Called the "Gem of the Mountains," and by some "The Saratoga of the Catskills." Stamford is really a village of perfect public utilities as: miles of macadam roads, electric lights, drainage system and all the features of a first-class city in miniature. Located at the headquarters of the Delaware River, on a plateau 1,790 feet above the sea. It is an ambitious town, one of many handsome mansions and villas; is, in fact, the favorite resting-place of merchants from New York and other cities. Lofty crags rise directly about it, the greatest of all, Mount Utsayantha, 3,365 feet above tide, is easily reached by a fine drive from the village. The view from this peak is one of very great extent and beauty, and from it one can count no less than twenty-eight lofty peaks. Stamford, though comparatively new, is coming on apace and has already grown quite a crop of hotels, villas and private stopping places.

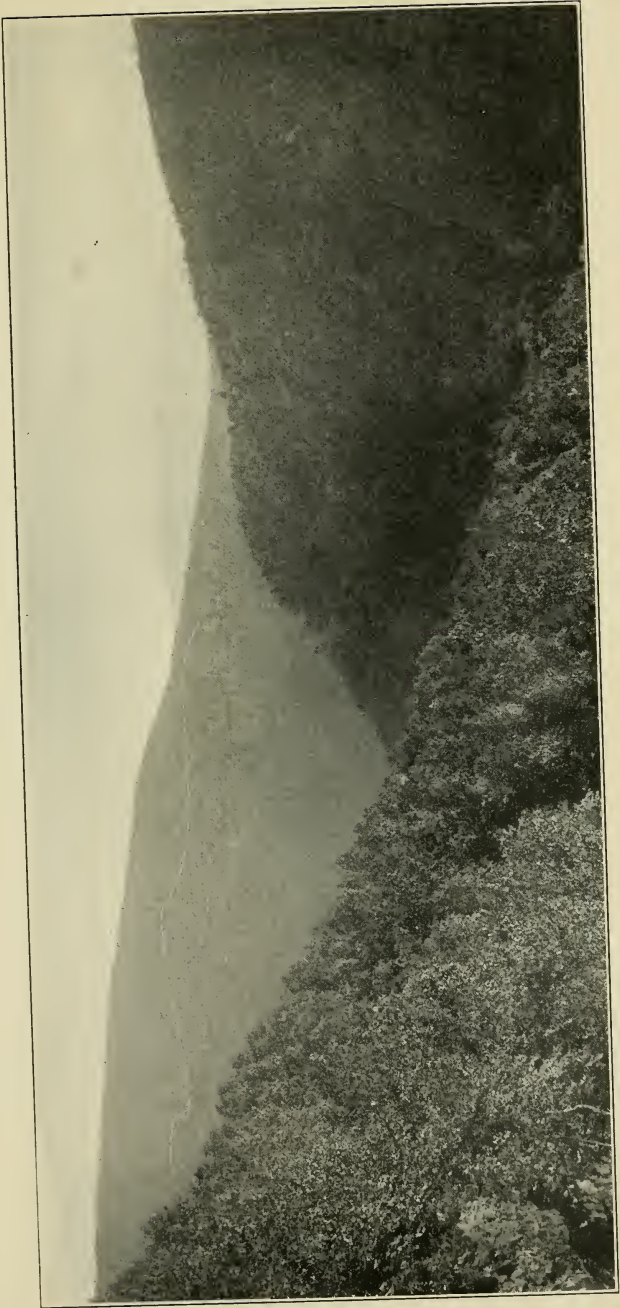


STREET SCENE, STAMFORD, N. Y.



TANNERSVILLE,

As its name indicates, was originally the site of an extensive tanning plant. The traveler through the mountains at the present time can easily realize that the original industry has been succeeded by another of a different nature. The village itself and the surrounding country is honeycombed with big hotels and pretty cottages. The country about here is very uneven, and on top of bluffs overlooking the village and commanding an unsurpassed view of the mountains are located hostelrys for summer guests. Adjacent to this place are several private parks, which are fast being built up with private residences and clubhouses. Among these parks may be mentioned Elka Park, over on Spruce Top Slope, near the source of the Schoharie; Onteora, across the valley, north of the village, and Schoharie Manor, adjoining Elka Park. This place is reached by the Kaaterskill branch of the Ulster & Delaware Railroad, 43 miles from Kingston, and is also the terminus of the Catskill and Tannersville Railway. This road begins at Otis Summit, the top of the Otis Elevating Railway, which connects down the incline at Otis Junction with the Catskill Mountain Railway from Catskill village, and by this route the tourist enjoys the delightful sensation of riding over the Otis Elevating Railway, which makes an ascent of 1,800 feet from the foot of the mountain to the top. The general elevation of Tannersville is about 1,900 feet. It is five miles from Hunter and two and a half miles from Haines Falls.



... RAVINE

WOODLAND, ULSTER COUNTY.

This place is about four miles from Phœnicia, and has an altitude of 1,200 feet. As the name indicates, the surrounding country is thickly wooded, wild and rugged. All the mountain tops and most of the valley land is owned by the State and is under the permanent protection of the Forest Commission. Slide and other important peaks have a footing in Woodland.

WEST HURLEY.

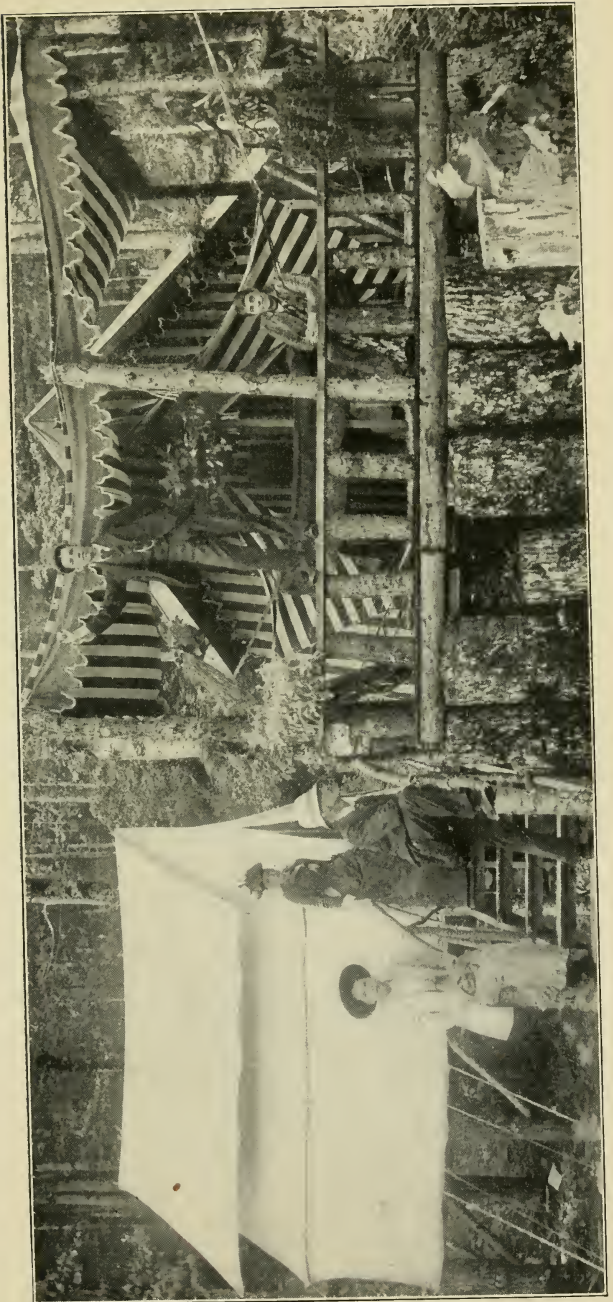
On Ulster & Delaware Railroad, 9 miles from Kingston. Altitude, 530 feet. From West Hurley one has a broad, rolling, profile view of the range, also an inspiring view of the Hudson River and its valley. About West Hurley there are walks and drives in all directions, and in and near it are a number of plashing waterfalls.

KAATERSKILL FALLS.

“Midst greens and shades the Kaaterskill leaps
From cliffs where the wood flower clings,
All summer he moistens his verdant steeps
With the sweet light spray of the mountain springs;
And he shakes the woods on the mountain side,
When they drip with the rains of autumn tide.

“But when in the forest bare and bold
The blast of December calls,
He builds, in the starlight clear and cold,
A palace of ice, where the torrent falls,
With turret and arch and fretwork fair,
And pillars blue as the summer air.”

—*William Cullen Bryant.*



C. F. WINGATE'S LODGE.

Stage Connections from Cairo

ON

Catskill Mountain & Cairo Railroad.

During the months June to September, inclusive, stages will run from the Cairo Station of the Catskill Mountain & Cairo Railway to the points named below, leaving Cairo at 12 o'clock noon, daily, except Sunday.

FOR	MILES.	FARE.	ROUND TRIP.
Acra	3	\$.25	\$.40
Ashland	21	1.25	2.25
Cooksburgh	12	.75	1.25
Durham	12	.50	1.00
East Durham	7	.50	.75
East Windham	10	1.00	1.50
Freehold	5	.25	.50
Hensonville	16	1.00	1.75
Oak Hill	12	.50	1.00
Potters Hollow	12	.75	1.50
Preston Hollow	12	.75	1.50
Prattsville	25	1.50	2.50
South Durham	6	.50	.75
Union Society	13	1.00	1.75
Windham	16	1.00	1.75

AT OTIS JUNCTION, on the Catskill Mountain Railway, connection is made with the OTIS RAILWAY for Catskill Mountain House, Hotel Kaaterskill, Laurel House, Haines' Falls, Twilight Park and Tannersville. The ascent of the mountain, from this point, is made in ten minutes.

OTIS SUMMIT, at the summit of the Otis incline railway, is 300 feet from the Catskill Mountain House and one mile from Hotel Kaaterskill. At Otis Summit connection is made by the Catskill & Tannersville Railway for Laurel House, Haines' Corners, Twilight Park and Tannersville. Stages from Hotel Kaaterskill meet passengers at Otis Summit.

From other stations on Catskill Mountain & Cairo Railway stages run to hotels and boarding houses in the vicinity.



AT YOUR SERVICE IN THE MOUNTAINS.

STAGE CONNECTIONS

FROM
Ulster and Delaware Railroad Stations.

FROM	TO	MILES.	FARE.
ARKVILLE	Andes	12	\$1.00
"	Arena	8	.50
"	Delhi	26	1.50
"	Dunraven	6	.50
"	Downsville	26	1.50
"	Lake Delaware	20	1.50
"	Margaretville	2	.15
"	Pepacton	19	1.25
"	Shavertown	15	1.00
"	Union Grove	12	.75
BIG INDIAN	Branch	12	1.00
"	Claryville	22	1.25
"	Frost Valley	15	1.00
"	Oliveria	2½	.25
"	Slide Mountain, P. O....	5	.50
"	Winnisook Lodge	8½	.75
BLOOMVILLE	Bovina Centre	6	.50
"	*Delhi	8	.75
GRAND GORGE	Prattville	5	.50
"	Gilboa	4½	.40
HUNTER	Ashland	14	1.25
"	Hensonville	7	.75
"	Jewett	9	1.00
"	Lexington	9	.75
"	Windham	9	1.00
SHANDAKEN	Bushnellville	3	.35
"	Lexington	11	1.00
"	Westkill	7	.75
STAMFORD	Harpersfield Centre	4	.25
"	Jefferson	7	.50
"	Richmondville	18	1.50
"	South Jefferson	3	.25
"	Summit	14	1.25
WEST HURLEY	Bearsville	7	.35
"	Lake Hill	10	.50
"	Mead's Mountain House.	8	1.00
"	Overlook Mountain House	9	1.25
"	Woodstocks	5	.25

Stages run daily, except Sunday.

Town marked thus (*), stage line runs Sunday morning also.

One Way and Excursion Rates to Catskill Mountain Resorts via Various Transportation Lines from New York.

STATIONS ON ULSTER & DELAWARE RAILROAD.		West Shore and U. & D. R. Rs. Via Kingston.		New York Central and U. & D. R. Rs. Via Rhinecliff.		Hudson River Day Line and U. & D. R. R. Via Kingston Point.		Mary Powell Steam- boat and U. & D. R. R. R. Via Rondout.		Central-Hudson Steamboats and U. & D. R. R. R. Via Rondout.	
	I Way.	Exc'n.	I Way.	Exc'n.	I Way.	Exc'n.	I Way.	Exc'n.	I Way.	Exc'n.	
Arkville	\$3.14	\$6.00	\$3.27	\$6.25	\$2.72	\$5.20	\$2.44	\$4.40	\$2.19	\$4.15	
Allaben	2.66	5.05	2.79	5.30	2.24	4.25	1.96	3.45	1.71	3.20	
Big Indian	2.78	5.30	2.91	5.55	2.36	4.50	2.08	3.70	1.83	3.45	
Bloomville	4.28	8.30	4.41	8.55	3.86	7.45	3.58	6.70	3.33	6.45	
Brown's	2.15	4.05	2.28	4.30	1.73	3.20	1.45	2.40	1.20	2.15	
Brodhead's	2.24	4.20	2.37	4.45	1.82	3.40	1.54	2.60	1.29	2.35	
Chichester	2.57	4.85	2.70	5.10	2.15	4.05	1.87	3.25	1.62	3.00	
Davenport Center	4.70	9.10	4.70	9.10	4.28	8.30	4.00	7.50	3.75	7.25	
East Meredith	4.64	9.00	4.70	9.10	4.22	8.20	3.94	7.40	3.69	7.15	
Edgewood	2.75	5.25	2.88	5.50	2.33	4.40	2.05	3.60	1.80	3.35	
Fleischmann's	3.02	5.75	3.15	6.00	2.60	4.95	2.32	4.15	2.07	3.90	
Grand Gorge	3.65	7.05	3.78	7.30	3.23	6.20	2.95	5.40	2.70	5.15	
Grand Hotel Station	2.93	5.60	3.06	5.85	3.51	4.75	2.23	4.00	1.98	3.75	
Haines Corners	3.02	5.50	3.15	5.75	2.60	4.95	2.32	4.15	2.07	3.90	
Halcottville	3.29	6.30	3.42	6.55	2.87	5.50	2.59	4.70	2.34	4.45	
Hobart	4.01	7.75	4.14	8.00	3.59	6.95	3.31	5.85	3.06	5.90	
Hunter	2.96	5.50	3.09	5.75	2.54	4.85	2.26	4.05	2.01	3.80	
Kaaterskill	3.11	5.50	3.24	5.75	2.66	5.10	2.38	4.30	2.13	4.05	
Kaaterskill Junction	2.87	5.45	3.00	5.70	2.45	4.65	2.17	3.85	1.92	3.60	
Kelly's Corners	3.23	6.20	3.36	6.45	2.81	5.35	2.53	4.60	2.28	4.35	
Kingston	1.76	3.55	1.89	3.80	1.00	1.65	.81	1.40	
Kortright Station	4.43	8.55	4.56	8.80	4.01	7.75	3.73	7.00	3.48	6.75	
Lanesville	2.66	5.05	2.79	5.30	2.24	4.25	1.96	3.45	1.71	3.20	
Laurel House Station	3.08	5.50	3.21	5.75	2.66	5.10	2.38	4.30	2.13	4.05	
Mount Pleasant	2.45	4.65	2.58	4.90	2.03	3.80	1.75	3.00	1.50	2.75	
Olive Branch	2.06	3.85	2.19	4.10	1.64	3.05	1.36	2.25	1.11	2.00	
Oneonta	4.70	9.40	4.70	9.40	4.46	8.75	4.21	7.95	3.96	7.70	
Phoenicia	2.51	4.75	2.64	5.00	2.09	3.95	1.81	3.15	1.56	2.90	
Pine Hill	2.90	5.55	3.03	5.80	2.45	4.65	2.17	3.85	1.92	3.60	
Roxbury	3.47	6.65	3.60	6.90	3.05	5.85	2.77	5.05	2.52	4.80	
Shandaken	2.72	5.15	2.85	5.40	2.27	4.30	1.99	3.50	1.74	3.25	

Shokan	2.27	4.25	2.40	4.50	1.85	3.45	1.57	2.65	2.40
South Gilboa	3.83	7.40	3.96	7.65	3.41	6.55	3.13	5.80	5.55
South Kortright	4.13	8.00	4.26	8.25	3.71	7.15	3.43	2.95	6.15
Stamford	3.92	7.55	4.05	7.80	3.50	6.75	3.22	5.95	5.70
Tannersville	2.96	5.50	3.09	5.75	2.54	4.85	2.26	4.05	3.80
West Davenport	4.79	9.30	4.70	9.30	4.37	8.50	4.09	7.70	7.45
West Hurley	1.97	3.65	2.10	3.90	1.55	2.85	1.27	2.05	1.80

**STATIONS ON
CATSKILL MOUNTAIN, CAIRO, OTI,
AND CATSKILL AND TANNERSVILLE
RAILWAYS.**

	West Shore and Catskill Mountain R. Railroad. Via Catskill.		Hudson River Day Line and Catskill Mountain Railroad. Via Catskill Land'g.		Catskill Evening Line and Catskill Mountain Railroad. Via Catskill.		New York Central and Catskill Mountain Railroad. Via Catskill Land'g.	
	I Way.	Exc'n.	I Way.	Exc'n.	I Way.	Exc'n.	I Way.	Exc'n.
Cairo	\$3.18	\$5.75	\$2.50	\$4.75	\$2.00	\$3.70	\$3.33	\$6.05
Catskill	2.18	4.36	1.50	2.75	1.00	1.70	2.33	4.66
Otis Summit	3.02	5.50	2.54	4.85	2.00	3.70	3.17	5.80
Haines Corners	3.02	5.50	2.54	4.85	2.00	3.70	3.17	5.80
Laurel House	3.02	5.50	2.54	4.85	2.00	3.70	3.17	5.80
Lawrenceville	2.98	5.35	2.30	4.35	1.80	3.30	3.13	5.65
Leeds	2.58	4.55	1.90	3.55	1.40	2.50	2.73	4.85
Palenville	3.18	5.75	2.50	4.75	2.00	3.70	3.33	6.05
South Cairo	2.78	4.95	2.10	3.95	1.60	2.90	2.93	5.25
Tannersville	3.02	5.50	2.54	4.85	2.00	3.70	3.17	5.80

Excursion tickets are also sold by the railroads out of New York at a lower rate than shown above, when used on trains of afternoon of Friday or on Saturday going, and used for return passage on or before the following Monday of date of sale.

STATIONS OF CATSKILL LINES IN NEW YORK.

- West Shore Railroad—Foot Franklin Street; Ferry to Weehawken, N. J.
- West Shore Railroad—Foot West 42d Street; Ferry to Weehawken, N. J.
- New York Central and Hudson River Railroad—Grand Central Station, 42d Street and Park Avenue.
- New York Central and Hudson River Railroad—Harlem Station, 125th Street and Park Avenue.
- Hudson River Day Line—Foot Desbrosses Street.
- Hudson River Day Line—Foot West 22d Street.
- Hudson River Day Line—Foot West 129th Street.
- Mary Powell Steamboat—Foot Desbrosses Street.
- Mary Powell Steamboat—Foot West 22d Street.
- Central-Hudson Steamboats—Foot Franklin Street.
- Central-Hudson Steamboats—Foot West 129th Street.
- Catskill Evening Line—Foot Christopher Street.

LIST OF SUMMER HOTELS, BOARDING AND FARM HOUSES IN THE CATSKILL MOUNTAINS.

*Indicates Reached via Kingston. †Indicates via Catskill. ††Via Kingston or Catskill.

Post-office and Railway Station.	Hotel, Boarding House, Private Residence, or Farm House. Name of Proprietor.	Miles from Sta.	Terms Per Week.	Accommodations for	Elevation Above Tide-water.	REMARKS.
†Acra, Greene Co.....	Echo House, J. P. Lennon	4	6 00	25	1400	Meets guests on notice; 50c.
Cairo Station.						
"	Falls Farm House, John Stead	4	6 00	50	1800	Meets guests on notice; 25c.
"	Mountain View House, G. W. Cartwright ..	4	5-7	35	1800	Meets guests on notice; 50c.
"	Hill Top Cottage, Mrs. M. Carman	2	6 00	20	1700	Meets guests on notice; \$1.00.
"	Locust Dell, Myron Bogardus.....	3	5 00	25	1800	Meets guests on notice; 50c.
"	Cherry Lawn Villa, E. J. Burns	2	6 00	50	1800	Meets guests on notice; 50c.
"	Southern House, W. H. Blackshaw	1 1/2	6-8	40	1800	Meets guests on notice.
*Allaben, Ulster Co.....	Mineral Rock House, Edmund Riseley	1 1/2	7-8	25	100	Private conveyance.
"	"Fairview," H. Longyear	1 1/2	8 00	40	1400	Private conveyance.
*Arkville, Delaware Co.....	Kutner House, Herman Kutner	1 1/2	7 00	75	1500	Private conveyance.
"	Hoffman House, F. D. Newton	1 1/2	12 00	75	1440	Meets guests upon notice.
"	Maple Avenue House, J. G. Beers.....	3 1/2	50	2000	Private conveyance; 50c.
*†Beaches Corner, Greene Co.....						
Hunter Station.						
"	Pleasant Farm, Romaine A. Butts	2 1/2	25	2400	Private conveyance if notified.
"	Summit House, Wm. Barkley	4	6-8	60	2300	Private conveyance; 50c.
*†Big Hollow, Greene Co.....	Elm Ridge House, H. N. Ford.....	7	6 00	20	2600	Private conveyance.
Hunter Station.						
"	Sunset View, Jennie C. Maseman	7	5 00	25	1758	Private conveyance; \$1.00.
*Big Indian, Ulster Co.....	"The Chieftain," D. A. Hawkins	1	50	1400	Private conveyance; 10c.
"	Cole Cottage, Andres Cole	1 1/2	7 00	25	1200	Private conveyance; 10c.
"	Creek Side House, F. A. Brimer	3 1/2	6-7	30	1550	Private conveyance; 50c.
"	Forest Home House, James Donohue	6-8	50	1400	Private conveyance.
"	La Ment's Hotel, G. W. La Ment	7-up	40	1600	Conveyance; no charge. See adv.

*Big Indian, Ulster Co				6-8	25	1300	Private conveyance.
"		"The Garrison," W. E. Garrison	1	40	1600	Private conveyance.
"		Griffin House, Mrs. C. J. Griffin	1	7-10	25	1200	Private conveyance.
"		"The Osceola," W. Marsh	1	7 00	25	1500	Private conveyance.
"		Pleasant View House, Charles Hummell....	1	6-7	25	1440	Private conveyance.
"		Shady Cottage, D. C. Dutcher	1	6-8	20	1311	Stage; 25c.
"		Terrace Cottage, Mrs. V. K. Knight	2	7 00	40	700	Private conveyance.
*Boiceville, Ulster Co		Davis Cottage, Millard H. Davis.....	1	6 00	25	700	
"		Maple Grove Farm, Mrs. I. L. Patchin.....	1	6 00	25	1000	Private conveyance.
"		Mount Hester, A. L. Snyder	1	5-6	20	1500	Private conveyance.
"		Pleasant View Cottage, Thos. Fenney	1	6 00	25	800	Private conveyance.
"		Sunset View Farm, Rollin D. Patchin	1	6 00	25	1000	Private conveyance.
*Brodhead's Bridge, Ulster Co ..		"Maple View," Alex. Van Kleeck.....	1	6-7	100	500	
Brodhead's Station.		"Mountain View," Frank Boice	1	6 00	35	600	Private conveyance.
"		Olivette House, Jacob W. Beesmer	1	6 00	25	500	
"		Private House, Oscar Rider	1	7-8	150	500	
"		Willow Brook, E. P. James	8 00	50	2787	Private conveyance; \$1.00.
"		Somerset House, D. M. Leonard	10				
*Broome Center, Schoharie Co ..		Brown's Farm House, Albert Brown	1	6-7	30	525	Private conveyance.
Grand Gorge Station.		Schryver House, J. W. Frost	1	6-7	25	800	Private conveyance.
*Brown's Station, Ulster Co		Locust Lawn Cottage, Mrs. J. C. Lasher ..	1	6 00	525	Private conveyance.
"		Dorothy House, E. D. Jenkins	2	6 00	25	1600	Private conveyance.
*Bushnellville, Greene Co		Mountain View, J. B. Rider	2	7-8	20	1500	Private conveyance; 50c.
Shandaken Station.		Maple Lawn House, A. J. Lock	4	7-10	175	1500	Meets guests if notified.
†Calro, Greene Co.....		Round Top View, C. C. Lock.....	1	6-10	40	1200	Meets guests if notified.
"		Locust Farm House, Levi N. Shaw	1	5 00	20	1500	Meets guests if notified.
"		Glen Brook House, Harrison Jones	2	6-8	40	1900	Meets guests if notified.
"		Round Top House, L. B. Moore	4	6-8	40	1900	Meets guests if notified; 50c.
"		Mower House, Ino. F. Mower	1	6-7	40	1200	Meets guests if notified.
"		Walters Hotel, A. L. & F. G. Walters	1	6-10	150	600	Free bus from station.
"		Sunset Cottage, H. V. Hoose	1	6 00	20	600	Meets guests if notified.
"		Glenwood Farm, Chas. S. Johnson	2	Apply	75	1500	Meets guests.

Post-office and Railway Station.	Hotel, Boarding House, Private Residence, or Farm House. Name of Proprietor.	Miles from Sta.	Terms Per Week.	Accommodations for	Elevation Above Tide-water	REMARKS.
† Calro, Greene Co.	Pine Grove Farm, Joseph Richards	3	6-8	35	1400	Meets guests; 50c.
"	Jennings House, D. W. Jennings	¹ / ₂	7-10	100	1000	Free bus.
"	Winding Brook Farm, Jno. H. Titus	³ / ₄	6 00	35	1600	Meets guests if notified; 50c.
"	Mt. Retreat House, Mrs. Isabel D. Feeney	3	6 00	25	1500	Meets guests if notified; 50c.
"	Hine House, S. H. Hine	¹ / ₄	6-10	100	1200	Meets guests if notified.
"	Rockefeller House, Peter Rockefeller	3	5 00	15	1200	Meets guests if notified.
"	Pine Grove House, W. L. Holcomb	7 00	1000	Meets guests if notified.
"	The Pines Farm House, F. W. Evory	² / ₃	6 00	30	700	Meets guests if notified.
"	The Evalin Farm, Jay E. Vaughn	4	5-6	15	700	Meets guests if notified; 50c.
"	Mill Brook Farm, J. S. Cochran	³ / ₄	5-7	25	1500	Meets all trains.
"	Falkner Farm House, W. H. Falkner	1	6 00	30	1200	Meets all trains; 50c.
"	Central Farm House, J. B. Edgerly	3	5-7	35	1400	Meets guests if notified.
"	Winter Clove House, H. B. Whitcomb	5	8-12	125	1275	Stage meets train.
"	The Columbia, H. K. Lyon	2	8-10	175	1400	Meets guests if notified.
"	Mill Side, Mrs. Wm. Holdridge	¹ / ₂	6-7	40	1200	Meets guests if notified.
"	Twin Pine House, Benj. M. Iliffe	¹ / ₂	5 00	40	1800	Meets guests if notified.
"	Mudge's Farm House, G. A. Mudge	6 00	25	1500	Meets guests if notified.
† Catskill, Greene Co.	Maple Brook Farm, Jos. B. Holmes	4	6 00	30	1100	Meets guests if notified; 50c.
"	Holcomb House, E. Holcomb	1	4-7	40	300	Trolley.
"	Irving House, E. Wilson	1	Apply	300	Trolley.
"	Smith House, Wm. M. Smith	Apply	150	300	Trolley meets trains; see adv.
"	Grant House, Grant & Cornell	¹ / ₂	10-21	250	700	Trolley meets trains.
"	Prospect Park Hotel, A. S. Washburne	10-15	400	600	See adv.
"	Summit Hill House, Fred. K. Becker	1	6-10	300	700	See adv.
"	Silver Spring Hotel, Henry Ott	³ / ₄	Apply	300	Trolley.
"	Fancher Farm, Mrs. A. C. Fancher	1	6-8	15	300	Trolley.
"	Exchange House, Van Person	1	6 00	30	300	Meets guests if notified; 25c.
"	Shady Lawn House, L. E. Tuttle	1	6-9	35	500	

†Catskill, Greene Co.....								500		Meets guests if notified; 25c.
"	Salisbury House, N. Lauria	1½					100			Meets guests if notified; 50c.
"	The Crevier, G. W. Goetchius	1					150			Meets guests if notified; 50c.
"	Mountain Retreat Hotel, D. Bloom	5	6-up				70			Meets guests if notified; 50c.
"	Mountain View House, Mrs. A. Zimmerman	2	7-8				50			Meets guests if notified; \$1.00.
"	Pleasant View Farm, C. E. Covell	4	5-8				25			Meets guests if notified; 50c.
"	Hotel Glenwood, V. Bramson	5	8-up				200			Stage runs twice a day; 50c.
"	Union House, S. Barker	1	8-10				50			Trolley.
"	Jefferson Homestead, I. G. Jackson	2	Apply				30			Meets guests if notified.
"	Breezy Hill House, J. N. Wilson	½	7-9				25			
"	Woodmere Heights, J. B. Getmann	2	8-12				45			
"	Jefferson Cottage, Wm. H. Prindle	1	5 00				30			Meets guests if notified; 25c. See adv.
"	Emboght House, Jno. Overbagh	1½	6-8				75			Meets guests if notified.
"	Swiss House, Mrs. P. Plush	1	7 00				125			Meets guests if notified; see adv.
Cornwall, Orange Co.....	Shady Lawn House, J. M. Conlan	½	Apply				50			Bus meets trains.
*Davenport Center, Delaware Co	"The Pines," R. L. Hebbard	1	Apply				500			Private conveyance; see adv.
†Durham, Greene Co.....	Shady Glen House, S. M. Elliott	10	5-8				25			Meets guests if notified; 50c.
Cairo Station.							60			
†East Durham, Greene Co.....	Gem Cottage, J. H. Burhaus	12	6 00				30			Meets guests if notified; 75c.
Cairo Station.	Magnificent View Farm, E. E. Schermerhorn	7	5-6						Meets guests if notified.
"	Nelson Tower House, E. E. Nelson	10	6 00				20			Meets guests if notified; \$1.00.
"	Edgewood Falls Farm, Mrs. G. H. Osterhout	5	6-7				65			Meets guests if notified; 50c.
"	Winans' Farm, Wm. A. Winans	6½	6 00				20			Meets guests if notified; 50c.
"	Maple Shade House, Chas. H. Furey	7	5-6				20			Meets guests if notified; 50c.
"	Eldorado House, Frank Owen	7	6-7				25			
†East Windham, Greene Co	The Summit House, A. Lamoreau	10	8-12				75			Meets guests if notified; \$1. See adv.
Cairo Station.							2900			
"	Summit House, John J. Barry	10	8-10				225			Meets guests if notified; \$1.00.
*Fleischmann's, Delaware Co....	Maple Villa, M. F. Curtis & Son	½	10 00				50			Private conveyance; 10c.
†Freehold, Greene Co.....	Terrace Cottage, Henry Benton	1½				40			Private conveyance.
Cairo Station.	Breeze Lawn House, E. E. Story	5	5-6				30			Meets guests if notified; 50c.
"	The Oakwood, Mrs. Jno. W. Brooks	5	6-7				40			Meets guests if notified; 50c.
"	Highland View, Mrs. Emily J. Smith	5	5 00				20			Meets guests if notified; 50c.
"	Evergreen Croft, W. P. Scabridge	5	6 00				35			Meets guests if notified.

Post-office and Railway Station.	Hotel, Boarding House, Private Residence, or Farm House. Name of Proprietor.	Miles from Sta.	Terms Per Week.	Accommodations for	Elevation Above Tide-water.	REMARKS.
†Freehold, Greene Co.....	Woodland Cottage, J. B. Simmons	5	5-6	30	1500	Meets guests if notified; 50c.
Cairo Station. "	Edgewood Cottage, Frank Woodard	5	6 00	25	1500	Meets guests if notified.
"	Josephine Farm House, T. J. Slater	6-8	40	1500	Meets guests if notified.
"	Autus Homestead, Mrs. C. Autus	4	Apply	20	1500	Meets guests if notified.
†Gayhead, Greene Co.....	Golden Hill House, Herbert B. Hallock	4	5-6	25	1800	Meets guests if notified.
So. Cairo Station. "	Bonanza Glen House, R. W. Allerton	4	5 00	25	1200	Meets guests if notified.
"	The Overlook, J. H. Wilber	2½	6-8	30	1800	Meets guests if notified.
"	Wilkins House, C. F. Wilkins.....	4	5-6	40	1500	Meets guests if notified.
"	Eastern Overlook, W. J. Parks.....	4	5-6	30	1800	Meets guests if notified.
"	Pine Grove House, Daniel Feeney	5	6-8	100	1800	Meets guests if notified.
*Gilboa, Schoharie Co.....	Farm House, Orra Cain	2	5 00	25	2500	Private conveyance.
Grand Gorge Station. "	Tuttle House, C. L. Tuttle	2	7-10	100	910	Private conveyance.
*Grand Gorge, Delaware Co....	Mountain Gorge Farm, Lawrence M. Cronk	1	6 00	15	1612	Private conveyance.
*Griffin's Corners, Delaware Co..	Brookdale Farm, R. M. Boughton	2	6-8	20	3000	Private conveyance.
Fleischmann's Station. "	Burnt Mt. House, Ralph Todd	4	6 00	25	2500	Private conveyance.
"	Victor View Cottage, W. H. Lasher	1	25	1900	Private conveyance.
"	Ivy Cottage, W. D. Ballard	1½	7-9	20	2000	Private conveyance.
"	Mayes House, A. Green	¾	Apply	50	2500	Stage line; 10c. See adv.
"	Montauk Cottage, Louis Metzger	1½	50	1800	Private conveyance; see adv.
*†Haines Falls, Greene Co.....	Central House, G. W. Reed	¾	8-10	75	2250	Private conveyance; see adv.
Haines Corners Station. "	Sunset Park Inn, F. N. Rogers, Mgr.....	½	15-25	200	2200	Stage line; 25c.
"	Mountain Rest, Rachel Anson	1	35	2400	Private carriage.
"	Glen Park House, Owen Glennon	1	8-12	100	2500	Private conveyance; see adv.

*†Haines Falls, Greene Co	Sunny Side, G. R. Knapp	1	7-10	25	2000	Private conveyance; 50c.							
Haines Corners Station.	Haines Falls House, W. B. De Camp, Mgr.	4	Apply	90	2000	Bus meets trains; see adv.							
"	"Kenwood," Elmer E. Pelham	4	8-12	50	2000	Bus meets all trains.							
"	The Lodge and Cottages, N. P. Leach	1	12 ¹ -up	75	2118	Bus meets all trains; 25c.							
"	Lox-Hurst, C. A. Martin	1	8-12	70	2000	Bus meets trains; see adv.							
"	"Mascotte," J. Ross	4	8-12	40	2500								
"	Shady Grove House, H. & W. O'Hara	4	Apply	50	2000	Bus meets all trains; see adv.							
"	Sunset View House, J. E. Haines	1	8-10	80	2730	Bus meets all trains; see adv.							
"	Upland Farm House, C. H. Legg	1 ¹	8-up	50	2500	Private conveyance; 50c.							
"	The Antlers, L. P. Schutt	2	Apply	200	2500								
"	Laurel House, H. L. Legg	4	Apply	300	2500								
"	Haines Corners Hotel, A. Christian	4	Apply	50	2500								
"	Dairy Farm, Rider Bros.	4	Apply	40	2600	Private conveyance.							
"	Unique Cottage, Frank Lasher	2 ¹	8-10	15	2800	Private conveyance; 25c. See adv.							
"	"Evergreen," Peter Haines	1	Apply	20	2000	Private conveyance.							
"	Farm House, C. A. Clegg	1	Apply	75	2500								
"	Maple Shade, R. Van Valkenburgh	5	Apply	50	2100	Private conveyance.							
*Halcott Centre, Greene Co.	Orchard Grove Cottage, J. B. Scudder	4	7 00	30	2000	Private conveyance.							
Fleischmann's Station.	South Mtn. Cottage, J. M. Moseman	3	Apply	30	2000	Stage, 9.30 A. M. and 4.30 P. M.							
"	Boarding House, D. W. Hubbell	1 ¹	Apply	50	1550	Private conveyance.							
*Halcottville, Delaware Co. . . .	Hotel Lake Side, T. J. Hait	1	7 00	30	1403								
"	Boarding House, G. W. Dutcher	4	Apply	25	1450	Private conveyance.							
"	Boarding House, Z. R. Williams	4	Apply	25	1450								
"	Boarding House, J. P. Morse	1 ¹	Apply	25	1800	Private conveyance.							
"	Farm House, J. B. Hinkley	1	Apply	30	1450	Private conveyance.							
"	Farm House, Kelly Bros.	1	Apply	25	1450								
*Highmount, Ulster Co.	Orient View, Maurice J. Roeg	2	8-15	40	2500	Stage meets all trains.							
Grand Hotel Station.	Bennett Homestead, S. O. Bennett	3	6 00	15	2000	Private conveyance.							
†Hobart, Delaware Co.	Gothic Cottage, Edmund Barlow	4	5-8	20	1750	Private conveyance.							
"	Boarding House, A. J. Lamb	4	Apply	25	1635	Private conveyance.							
"	Boarding House, Mrs. L. P. Lyon	4	Apply	30	1635	Private conveyance.							

Post-office and Railway Station.	Hotel, Boarding House, House, Private Residence, or Farm House. Name of Proprietor.	Miles from Sta.	Terms Per Week.	Accommodations for	Elevation Above Tide-water.	REMARKS.
*†Hobart, Delaware Co.....	Hotel, C. Weeks	1	Apply	30	1635	Stages meet trains.
"	Hotel, S. A. McMorris	1	Apply	50	1635	Stages meet trains.
"	Private Residence, J. S. Hanford	1	Apply	25	1635	Private conveyance.
"	Private House, John C. McWindy	1	Apply	20	1635	Private conveyance.
"	Boarding House, W. C. Ives	1	Apply	25	1635	Private conveyance.
*†Hunter, Greene Co.....	The Alpen, G. W. Saxe	1	Apply	25	2200	See adv.
"	Central House, Joseph Lieberman.....	1	10-up	150	1700	Meets all trains; 25c.
"	Craig Gowan, L. M. Cole	1	Apply	25	2200	Bus.
"	Fernside Cottage, E. C. Fromer	1	8-10	30	1700	Carriage on notice; 25c.
"	Grand View Hotel and Cotgs., Simon Epstein	1	12-16	200	2250	Bus; no charge.
"	Hazelhurst Cottage, A. J. Rowley	3 1/2	5-8	30	1800	Private conveyance.
"	Pleasant Home, P. H. Connerty	1	Apply	25	1500	
"	The Ripley, L. A. Woodworth	1	10 00	50	1644	See adv.
"	Stony View Hotel, Louis Meyers	1	Apply	200	2000	Private conveyance.
"	Swiss Cottage, Mrs. John Abrams	1	Apply	12	2000	Stage meets trains; 25c.
"	Terrace Home, C. G. Haner	1	Apply	30	1700	Private conveyance; 25c.
"	West End Hotel, H. B. Gara	1	10-17	130	1700	Bus meets trains; see adv.
"	Willow Brook Cottage, Chas. Quick.....	1 1/2	Apply	15	2000	Private conveyance.
"	Hunter House, M. Stark	1	Apply	200	1644	
"	The Kaatsberg, R. Elliott	1	Apply	85	1800	See adv.
"	The Arlington, Pearlman & Horowitz.....	1	Apply	80	1800	See adv.
"	Hotel St. Charles, J. H. Burtis, Jr.....	1	Apply	180	200	See adv.
"	Prospect Home, J. M. Cannane	1 1/2	Apply	200	2000	Bus meets trains; 25c.
"	Breeze Hill, J. J. Carr	2	Apply	57	2000	
"	Farm House, Z. W. Ingraham	1	Apply	25	2000	
"	Private Residence, P. Hummel	1	Apply	200	2000	
"	Private Residence, Jas. Linsley.....	1	Apply	20	2000	
*†Jewett, Greene Co.....	Elm Tree Farm House, J. P. Race.....	6	Apply	25	1800	Private conveyance; 75c.

*†Jewett, Greene Co.....	Tower Mountain House, Emmons Pond	9	7-12	90	1810	Private conveyance; \$1.00.
Hunter Station."						
*†Jewett Centre, Greene Co.....	Jewett Heights House, G. H. Chase	6	7-10	50	1900	Private conveyance.
Hunter Station.	Mountain Farm, Clark Chamberlin.....	5	6 00	20	2000	Private conveyance; 50c.
*†Jewett Heights, Greene Co..	Mountain Side House, O. T. Bailey.....	7	Apply	40	2200	Private conveyance; \$1.00.
Hunter Station.						
*†Kaaterskill, Greene Co.....	Hotel Kaaterskill, H. E. Eder, Mgr.	1	Apply	1000	2400	Trolley.
*Kingston, Ulster Co.....	O'Neil House, W. F. O'Neil	1	5-6	30	400	Stage leaves station 3 P. M.; 20c.
"	Cedar Hill Farm, E. V. Schoonmaker.....	2	6 00	25	400	Trolley.
"	Fincher's Hotel, C. G. Fincher	1	7 00	25	300	Trolley.
"	The Arlington, C. M. Carhart	1	7-8	40	225	Trolley.
"	The Kirkland, M. S. Conklin.....	1	Apply	50	300	Bus meets all trains; free.
"	Mansion House, Geo. W. Palmer	near	12 00	75	300	
"	United States Hotel, P. J. O'Pray	near	7-9	50	300	
†Kiskatom, Greene Co.....	Kingston Hotel, F. M. Cronk	1	7-up	100	185	Trolley.
"	Orchard Grove Farm, Jno. Hodum	7	8-up	40	1200	Carriage if notified; \$1.00.
"	Mtn. View Farm, Frederick Saxe.....	7	6-8	40	600	Carriage if notified.
"	Apple Grove, Edgar Saxe	5	6-8	20	6000	Carriage if notified; 50c.
"	Glenwood Hotel, W. H. Bramson	6	8-up	175	1150	Carriage if notified; 50c.
"	Kiskatom Retreat House, W. P. Fisher	6	6-10	90	1500	Carriage on notice; 50c.
"	Van Bramer Homestead, G. Van Bramer.....	4	6-7	Aply	Meets guests if notified.
"	Pine Grove Farm, Lorenzo Overbaugh.....	4	6 00	25	1500	Meets guests if notified.
*Krumville, Ulster Co.....	Beaver Dam Farm, B. Merrithew.....	6	5-8	60	1100	Private conveyance; 50c.
Brodhead's Bridge Station.						See adv.
*Lake Hill, Ulster Co.....	Rock View, E. Merrithew	5	Apply	20	800	Private conveyance.
West Hurley Station.	Wilber House, R. R. Wilber	6	7-8	40	1800	Private conveyance.
*Lanesville, Greene Co.....	Lake Side, Moses Sagendorf	6	5 00	15	540	Private conveyance.
"	Central Farm House, F. A. Barber	1	6-8	50	1800	Private conveyance; 10c.
"	Hotel, Asa Crosby	1	Apply	30	1800	Private conveyance.
"	Lanesville House, H. D. Lane	1	7-8	40	1600	Private conveyance.
†Leeds, Greene Co.....	Fairview Farm, Frank Winans	1	6 00	20	1200	Meets guests if notified.
Cairo Junction Station.						
"	Breezy Hill Farm, Uriah Harris	1	6 00	20	1800	Meets guests if notified; 50c.

Post-office and Railway Station.	Hotel, Boarding House, Private Residence, or Farm House. Name of Proprietor.	Miles from Sta.	Terms Per Week.	Accommodations for	Elevation Above Tide-water.	REMARKS.
† Leeds, Greene Co.	Salisbury Manor, George Budeau	8	6 00	100	2000	Meets guests if notified.
Cairo Junction	Maple Shade Farm, Anthony Bloom	2½	6 00	20	1200	Meets guests if notified.
"	The Dircksville, H. M. Hankinson	3½	6-7	40	1000	Meets guests if notified; 50c.
"	Green Lake House, J. M. Day	6-8	60	500	Meets guests if notified; 50c.
"	Green Lake Homestead, J. McGiffert & Sons	5	7-8	120	1000	Meets guests if notified; 50c.
"	Green Lake Valley Farm, John W. Ward	4	8 00	20	500	Meets guests if notified.
"	Edgewood House, M. E. Vedder	¼	6-8	25	1500	Meets guests if notified.
"	Bethel Bridge House, J. Eister	2	6-8	60	1200	Meets guests if notified.
† Lexington, Greene Co.	Crystal Lake House, C. L. Kipp	8	Apply	35	1600	Private conveyance; \$1.00.
Hunter Station.	Kipp House, H. Kipp	8	Apply	40	1600	Private conveyance.
"	Pleasant Valley, A. J. Pettit	10	5 00	30	1332	Conveyance if notified; \$1.00.
"	Monroe Ho., J. M. Van Valkenburgh & Son	8	9 00	50	1600	Private conveyance; \$1.00.
"	O'Hara House, B. O'Hara	8	Apply	125	1600	Private conveyance; see adv.
"	Orchard Crest House, O. M. Huggans	9	6-8	20	1600	Private conveyance; \$1.00.
"	Valley Farm, W. Van Valkenburgh	9	5 00	25	1500	Private conveyance.
"	Smith House, M. A. Smith	6	7 00	25	1600	Private conveyance; \$1.00.
* Longyear, Ulster Co.	Cockburn House, Samuel Cockburn	¾	Apply	135	800	Private conveyance.
Mt. Pleasant Station.	Stony Brook Cottage, S. P. Champlin	4	5-7	25	500	Meets guests if notified.
Loyd, Ulster Co.	The Ackerly, Thomas Hill	1½	8-15	150	1356	Stage meets trains; 15c. See adv.
* Margaretville, Delaware Co.	Farm House, A. J. Benedict	3	5-7	20	Private conveyance.
Arkville Station.	Mountain Home, Nelson Van Benschoten	3	6-8	25	2150	Private conveyance; 50c.
"	Haines Farm House, Adella Haines	9	6-8	50	2200	Meets guests if notified.
† Norton Hill, Greene Co.	Mountain House, R. Hallenbeck	2	6-7	40	1500	Private conveyance.
Cairo Station.	Cockburn Cottage, Albert C. Davis	1½	5-7	25	600	Private conveyance.
* Olive, Ulster Co.						
Olive Branch Station.						

*Olive Bridge, Ulster Co.....			13	6-7	50	500	
Brodhead's Bridge Station,	Bishop Fall House, D. & F. Bishop						
"	Farm House, I. V. Merrihew.....	2	6-7	25	500		Private conveyance.
"	Farm House, T. W. Cornish	2 1/2	5-6	25	600		
"	Farm House, Mrs. J. Wicks.....	2	6-00	25	600		
"	Laurel House, Wm. Haver.....	1	6-7	40	600		Private conveyance.
"	Tongore Brook House, Walter North	3	5-00	25	600		Private conveyance.
*Ollivera, Ulster Co.....	Cold Spring House, Y. Barnum	2	5-7	25	1600		
Big Indian Station,	Crystal Spring House, Wm. Hill	2 1/2	6-8	25	1800		Stage; 50c.
"	Haynes House, Edgar Haynes	2 1/2	6-00	36	1800		Stage; 50c.
"	Farm Cottage, Warren Johnson	4	6-8	35	1800		Private conveyance.
"	Mountain House, J. P. Valkenburgh.....	2 1/2	7-10	20	1600		Private conveyance.
"	Slide Mtn. House, Byron Dutcher.....	3	8-00	100	1800		Private conveyance; 50c.
†Otis Summit, Greene Co.....	Catskill Mtn. House, Chas. & Geo. H. Beach	near	16-25	2500		Stage meets trains.
†Palenville, Greene Co.	The Arlington, A. Timmerman	1 1/2	6-10	40	700		Meets guests if notified.
"	Centennial Cottage, Chas. A. Stewart	1 1/2	6-8	25	1000		Meets guests if notified.
"	Airy Hill House, James Kraus	1	7-8	50	1000		Meets guests if notified; 25c.
"	Maple Grove House, Philo Peck	1 1/2	10-00	100	800		Meets guests if notified; 25c.
"	Stony Brook House, Henry Peters	1 1/2	7-10	100	1500		Meets guests if notified.
"	Pleasant View House, Wm. M. Saxe	1	7-up	35	1000		Meets guests if notified; 25c.
"	Kaaterskill Clove, P. H. Scribner	1	7-10	40	1000		Meets guests if notified.
"	Pine Grove House, Cornelius Du Bois	1 1/2	10-12	80	800		Meets guests if notified.
"	Echo House, Geo. Wynkoop	1	Apply	40	1800		Meets guests if notified.
"	Drummond Falls, H. M. Dederick	1	7-10	75	800		Meets guests if notified; 25c.
"	Lawrenceville Cottage, Ward H. Bogardus	2	6-00	20	1000		Meets guests if notified.
"	Garrison House, C. B. Schaidner	1	6-8	30	1000		Meets guests if notified.
"	Myrtle Villa, J. R. Hinmann	1 1/2	Apply	800		Meets guests if notified.
"	Kinkade House, J. Voss	1 1/2	Apply	25	900		Private conveyance.
*Phoenicia, Ulster Co	Europa House, Mrs. W. J. Knapp	1	Apply	100	1000		Bus free.
"	Knapp House, Mrs. W. J. Knapp	1	Apply	20	790		Private conveyance; see adv.
"	The Martin, J. S. Newman	1	8-up	25	1000		Private conveyance.
"	Simpson House, I. H. Simpson	1 1/2	7-00	25	1200		Private conveyance.
"	The Brewerton, L. C. Reynolds	1 1/2	8-12	75	1700		Stages meet trains; see adv.
*Pine Hill, Ulster Co.....	The Alpine, A. B. Smith	1 1/2	8-12	100	1700		

Post-office and Railway Station.	Hotel, Boarding House, Private Residence, or Farm House. Name of Proprietor.	Miles from Sta.	Terms Per Week.	Accommodations for	Elevation Above Tide-water.	REMARKS.
* Pine Hill, Ulster Co.....	Bonnie View, R. W. Hill	1	Apply	50	1800	Stages meet trains; see adv.
"	The Loomis, Mrs. E. Loomis	1	Apply	1800	Stages meet trains; see adv.
"	Birch Creek House, Hezekiah Gossoo	50	7-8	1700	Stage meets all trains; 15c.
"	Cornish House, J. C. Cornish	100	10-15	1700	Stage meets all trains; 10c.
"	Elm Tree House, Mrs. H. J. Myers	1-16	7-8	35	1700	Private conveyance; 10c.
"	Mtn. Meadow House, Warren Townsend	2 1/2	Apply	45	1700	Private conveyance.
"	Molyneaux Cottage, Mrs. A. R. Molyneaux	1 1/2	7-8	25	1700	Stage meets all trains; 10c.
"	Mtn. Spring House, Mrs. A. Goldsman	1 1/2	10 00	20	1700	Stage meets all trains; 25c.
"	Snedeker Cottage, J. E. Snedeker	1	7-9	25	1700	Stage meets all trains; 10c.
"	Valley Stream Cottage, Benj. Dougherty ..	1	7-10	20	1700	Private conveyance.
"	The Mountain Inn, Thos. R. Moore.....	1 1/2	12-18	200	1800	Stages meet trains; see adv.
"	The Winterton, D. F. Winter	1 1/2	8-12	50	1700	Stage meets all trains; 10c.
"	Woodbine Cottage, Mrs. A. P. Noe	1 1/2	Apply	1700	Stage meets all trains.
"	Willow Cottage, Chas. F. Chamberlin	1 1/2	7-10	16	1800	Private conveyance.
"	The Watson, S. H. Lee.....	1 1/2	Apply	35	1700	Conveyance meets trains; see adv.
"	Townsend Farms, Jas. Townsend	2 1/2	7 00	25	2500	Private conveyance; 50c.
"	Grovesmont, Asa F. Smith	1	Apply	2800	Private conveyance.
* Prattsville, Greene Co.....	Devasego Inn, S. D. Mase	4	7-10	50	1500	Private conveyance; 50c.
Grand Gorge Station.	Glenwood House, M. E. Maybee	8	6-8	20	1300	Private conveyance; 50c.
"	Greyhurst Cottage, James Richtmyer	4	7-9	30	1400	Private conveyance.
"	Shady Lawn House, Mrs. W. B. Conine	5	6 00	40	1200	Private conveyance.
† Purling, Greene Co	Mountain View House, L. H. Garrison	2	5-7	50	1600	Meets guests if notified; 50c.
Cairo Station.	Mountain Springs Farm, A. W. Craw and Mrs. A. Rowe	2	6 00	45	1600	Meets guests if notified; 50c.
"	Evergreen Grove Ho., A. C. Schermerhorn	1	7-10	125	Meets guests if notified.
"	Central View House, Geo. Dedrick	1	7-8	60	1200	Meets guests if notified; 25c.

†Purling, Greene Co	1	7-8	100	1200	Meets guests if notified.
Cairo Station.	1	6-8	40	1200	Private conveyance.
“	3	Apply	45	1600	Meets guests if notified.
“	3	6-00	20	1600	Meets guests if notified.
“	1	7-9	60	1200	Meets guests if notified; 25c.
“	1	7-8	50	1400	Meets guests if notified.
“	14	6-00	30	1200	Meets guests if notified; 25c.
“	2	7-10	60	1400	Meets guests if notified.
“	2	7-10	125	1400	Meets guests if notified.
“	2	6-8	28	1400	Meets guests if notified; 50c.
“	1	7-8	30	1500	Meets guests if notified; 25c.
“	2	7-00	30	1200	Meets guests if notified; 25c.
*Riseleys, Ulster Co	2				
Allaben Station.					
*Roxbury, Delaware Co.	2	6-00	15	1500	Private conveyance.
“	1	10-12	40	1500	Private conveyance; see adv.
“	4	6-00	25	1500	Private conveyance.
“	1	10-12	40	1500	Free bus; see adv.
*Shandaken, Ulster Co					
“	$\frac{1}{2}$	6-00	30	1100	Stage; 25c.
“	$\frac{1}{2}$	6-7	20	1060	Private conveyance; 10c.
*Shokan, Ulster Co	1	Apply	25	1200	Private conveyance.
“	$\frac{3}{4}$	6-00	35	800	Private conveyance.
“	$\frac{1}{4}$	5-6	25	600	Private conveyance.
“	$\frac{1}{4}$	5-6	20	700	Private conveyance.
*Slide Mountain, Ulster Co	5	6-8	50	2000	Private conveyance; 50c.
Big Indian Station.					
†South Cairo, Greene Co	5	7-10	30	1800	Private conveyance; \$1.00.
“	1	5-7	30	800	Meets guests if notified.
“	4	6-00	50	1500	
“	$\frac{1}{4}$	5-7	15	800	Meets guests if notified.
“	$\frac{1}{4}$	6-00	20	800	Meets guests if notified; 25c.
“	2	5-6	35	1100	Meets guests if notified.
“	1	Apply	20	800	Meets guests if notified.
“	$\frac{1}{4}$	6-00	100	800	Meets guests if notified.
“	2 $\frac{1}{2}$	5-6	30	1500	Meets guests if notified.

Post-office and Railway Station.	Hotel, Boarding House, Private Residence, or Farm House. Name of Proprietor.	Miles from Sta.	Terms Per Week.	Accommodations for	Elevation Above Tide-water.	REMARKS.
†South Durham, Greene Co	Grove Side Cottage, L. H. Stone	5	5-6	125	1800	Meets guests if notified; 50c.
Cairo Station.	Orchard Farm House, Jos. Armstrong	8	6-7	20	1800	Meets guests if notified; 75c.
"	Woodcrest, Berdolt Bros.	5	5-6	50	2200	Meets guests if notified; 50c.
"	Hulse Mountain Retreat, J. V. Hulse	5	5-8	50	1800	Meets guests if notified; 50c.
*South Jefferson, Schoharie Co., Stamford Station.	Martin Homestead, J. A. Martin	5	6-10	20	2000	Private conveyance.
*Stamford, Delaware Co	Boyd Cottage, J. Boyd.....	1 1/2	5-10	20	1800	Private conveyance.
"	Canary Cottage, J. G. Grant	1 1/2	6-8	16	1900	Private conveyance.
"	Cedarhurst House, Hugh Govern	1	Apply	30	2000	Private conveyance; see adv.
"	Kendall Place, T. W. Kendall	1 1/2	Apply	60	1825	Private conveyance; see adv.
"	Terry Homestead, A. W. Terry	1 1/2	8-12	40	1825	Private conveyance; see adv.
"	Cold Spring House, A. L. Churchill	1 1/2	7-10	60	1825	Private conveyance; see adv.
"	The Atchinson, M. D. Atchinson	1	Apply	40	2000	Private conveyance; see adv.
"	Simpson Terrace, R. C. Simpson	1	Apply	75	2000	Private conveyance; see adv.
"	Canfield House, E. G. Canfield	2	6-7	40	3000	Private conveyance.
"	Churchill Hall, S. E. Churchill	1 1/2	Apply	300	1825	Private conveyance; see adv.
"	Eagle's Nest, J. W. Fuller	1 1/2	7-up	20	1800	Private conveyance.
"	Far View House, G. H. Hager	1 1/2	8-12	40	1800	Private conveyance; see adv.
"	Greenhurst, E. E. Van Dyke	1 1/2	Apply	25	1850	Private conveyance; see adv.
"	Ingleside, J. R. Martin & Son	1 1/2	Apply	35	1800	Private conveyance; see adv.
"	Hotel Hamilton, F. E. Basley	1 1/2	Apply	60	1825	Private conveyance; see adv.
"	Hubbell Cottage, H. P. Hubbell, M.D.....	1 1/2	7-10	25	1800	Private conveyance; see adv.
"	Lakeside, M. Z. Wardwell	1	7-10	20	2000	Private conveyance.
"	Lawrence Cottage, H. C. Lawrence	1 1/2	7-10	20	1800	Private conveyance.
"	Madison House, A. C. Van Dyke	1 1/2	Apply	50	1800	Free bus.
"	Mountain View, Benj. McKillip	1 1/2	Apply	75	2000	Free bus; see adv.
"	New Grant House, J. P. Grant	1 1/2	12-21	100	1900	Free bus.

*Stamford, Delaware Co.....	1	Prospect Farm House, Thos. Murphy	20	2000	Private conveyance.
"	1	The Rexmere, S. E. Churchill	150	Apply	1850	Private conveyance; see adv.
"	1	Rosemont, Wheeler & Reynolds	25	10-15	1800	Private conveyance; see adv.
"	1	Utsayantha Lake House, Dan'l Craft	20	2000	Private conveyance.
"	1	The Westholm, Mrs. H. S. Preston	40	8-15	2000	Private conveyance; see adv.
†Summit Mountain, Ulster Co....	near	New Grand Hotel, Col. C. A. Linsley.....	800	Apply	2500	Bus meets trains.
Grand Hotel Station.						
†Sun Side, Greene Co.....	5	Sun Side Farm, M. J. Richtmyer	40	6 00	1200	Meets guests if notified.
Cairo Station.						
*Tannersville, Greene Co.....	1	The American, C. L. Wiltse	75	2500	Private conveyance; 25c. See adv.
"	1	Brown's Cottage, Miss Kate Brown.....	20	8-10	2000	Private conveyance; 25c.
"	1	Campbell House, Nelson Campbell	100	Apply	2200	Private conveyance.
"	1	The Fairmount, S. Jacobson	175	Apply	2300	
"	1	Grimm's Cottage, Wm. Grimm.....	18	8 00	2500	
"	1	Mansion House, Geo. Campbell	150	9-12	2000	Bus meets trains; see adv.
"	1	Hotel Martin, W. B. Martin.....	150	Apply	2200	Bus meets trains; see adv.
"	3	Meadow Lawn, Thos. Seiffert	60	Apply	2500	Private conveyance; 50c.
"	1	Moran Cottage, M. Moran	25	8-10	2000	
"	1	Tannersville Mtn. House, I. O'Linsky.....	30	Apply	2000	Private conveyance.
"	1	The Wellington, A. M. Wiltse	30	8-10	2200	See adv.
"	1	The Welden Hotel, Dan'l Fromer	50	Apply	2000	See adv.
"	1	Tannersville Cottage, M. O'Hara.....	20	Apply	2300	See adv.
"	1	Cold Spring House, L. Bieber	200	Apply	2200	See adv.
"	1	Washington Park House, Christian Ott.....	Apply	2510	See adv.
"	1	The Blythewood, Lena Frank	Apply	2400	
"	1	Maple Grove, B. Grossman	100	2500	
"	1	Woodward House, Mrs. N. Jacobs	40	15 00	2000	Stage meets trains; 25c.
"	1	Lamson House, C. M. Lamson	45	8-10	800	Private conveyance.
*The Corner, Ulster Co.....	1	Randall House, L. S. Randall	25	800	Private conveyance.
Mt. Pleasant Station.		Willow Cottage, Frank Smith.....	16	7 00	800	Private conveyance.
"	1	Clover Dale, E. E. Swedes	25	6-7	550	Private conveyance.
*West Hurley, Ulster Co.....	1	Boarding House, Mrs. M. Lane	20	5-7	550	Private conveyance.
"	1	Boarding House, Wm. Young	15	5-7	550	Private conveyance.

Post-office and Railway Station.	Hotel, Boarding House, Private Residence, or Farm House. Name of Proprietor.	Miles from Sta.	Terms Per Week.	Accommodations for	Elevation Above Tide-water.	REMARKS.
*West Hurley, Ulster Co.....	Hotel, Marcus Lane	1-16 ¹	5-7	20	550	
*Westkill, Greene Co.....	Hotel, Mrs. I. J. Carey	$\frac{1}{4}$	5-7	25	550	
Shandaken Station.	Echo Notch House, G. D. Baldwin, Mgr.....	6	5 00	40	2000	Private conveyance; 75c.
*West Shokan, Ulster Co.....	Shady Lawn, Chas. Riley	8	7-9	40	1800	Private conveyance; 75c.
Shokan Station.	Burgher House, Mathias Burgher	2	6-8	40	700	Private conveyance.
"	Cosner Cottage, N. W. Bishop	$\frac{1}{2}$	7-8	15	550	Private conveyance.
"	Fair View, John J. Wesley	1	6 00	25	800	Private conveyance.
"	Hotel, Henry Schmidt	$\frac{1}{2}$	7-10	150	600	Private conveyance.
"	Boarding House, C. H. Weidner	$\frac{1}{2}$	7-8	25	800	Private conveyance.
†Windham, Greene Co.....	The Pines, J. W. Soper.....	8	8-12	75	1800	Private conveyance; see adv.
Hunter Station.	Roxmor, Edward B. Miller	4	Apply	40	1200	Open all seasons; see adv.
*Woodland, Ulster Co	The Irvington, Jacob D. Wurts	4 $\frac{1}{2}$	6-10	75	750	Private conveyance; 25c.
Phoenicia Station.	Mead's, Geo. Mead.....	7	Apply	75	2000	Private conveyance.
*Woodstock, Ulster Co.....	Riseley Farm House, A. N. Riseley	4 $\frac{1}{2}$	5-10	65	600	Private conveyance.
West Hurley Station.						
"						

Hudson River by Daylight.

THE MOST CHARMING INLAND WATER TRIP
ON THE AMERICAN CONTINENT.



THE PALACE IRON STEAMERS
"NEW YORK" AND "ALBANY."
of the Hudson River Day Line.

DAILY, EXCEPT SUNDAYS.

Leave New York, Desbrosses Street.....	8.40 A.M.
" " West 22d Street, N. R....	9.00 " "
" " West 129th Street, N. R..	9.15 " "
Albany, Hamilton Street.....	8.30 " "

**Landing at Yonkers, West Point, Newburgh, Poughkeepsie,
Kingston Point, Catskill and Hudson.**

The attractive route for Summer pleasure travel to or from
**The Catskill Mountains, Saratoga and
the Adirondacks, Hotel Champlain and the
North, Niagara Falls and the West, the
Thousand Islands and St. Lawrence River.**

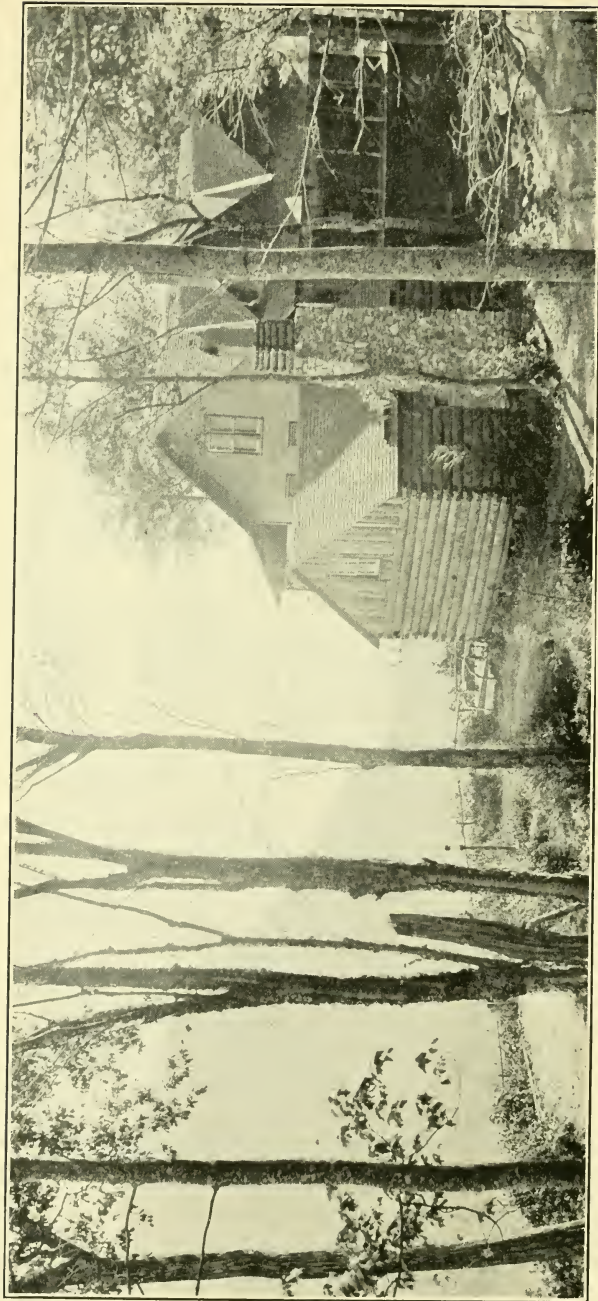
THROUGH TICKETS SOLD TO ALL POINTS.

The superb steamers, "New York" and "Albany," of the Day Line, are the fastest in the world, and are the finest of their class afloat. They are designed exclusively for the passenger service, and carry no freight. Their rich furnishings, costly paintings, private parlors and main deck dining-rooms, commanding the river scenery, have given them a world wide renown.

As a delightful link in the chain of a Summer tour, the trip up or down the Hudson River on one of these steamers is recommended to the traveling public.

SEND SIX CENTS FOR COPY OF "SUMMER EXCURSION BOOK."

Tickets via Day Line Are on Sale at All Offices.
F. B. HIBBARD, General Passenger Agent,
E. E. OLCOTT, General Manager.
Desbrosses Street Pier, New York.



TWILIGHT INN, TWILIGHT PARK, N. Y.

LA MENT'S HOTEL, BIG INDIAN,
Ulster County, N. Y.

ON THE ULSTER & DELAWARE RAILROAD,
33 MILES FROM KINGSTON.

Conveniences: Post Office and Telegraph next door. Telephone in office; no charge to or from depot. Livery attached.

The Table Has These Advantages: Vegetables from the garden; milk and eggs from the farm; best cuts of meats used. Forty guests. No malaria or mosquitoes. Cool nights and shady grounds.

Sanitary plumbing, baths, hot and cold water. Lighted by gas. Guides and dogs furnished to hunters.

Transient rates per day, \$1.50. Rates per week, \$7.00 and up.

For Special Rates and information, address

G. W. LA MENT, Big Indian, Ulster County, N. Y.

CATSKILL, N. Y.

GRANT HOUSE, CATSKILL,
N. Y.

Grant & Cornell, Props.

BEST GOLF COURSE IN CATSKILLS.

Ping-Pong; Music Morning and Evening.

250 Guests, Rates: \$12.00 to \$18.00. No Bar.

Apply FREDERICK CORNELL, Mgr.

SUMMIT HILL HOUSE,

Family and Transient Hotel. Open All Year.

CATSKILL, N. Y.

The highest point in this locality, commanding a picturesque view of the Berkshire Hills, Mass.; Green Mountains, Vt., and the New Hampshire Mountains.

Pine grove alongside of hotel. Sanitary improvements, baths, hot and cold water. Farm of 74 acres. Music, dancing. No mosquitoes. Livery attached.

FREDERICK BECKER, Prop,

JEFFERSON COTTAGE, Catskill, N.Y. Located on Jefferson Heights, overlooking village and commanding a grand view of mountains. Excellent table; farm attached; rates reasonable. Send for booklet. W. H. PRINDLE, Prop.

SWISS HOUSE, Catskill, N. Y. Located on West Catskill Heights, one mile from village; beautiful view of the mountains and river. Rooms large; plumbing sanitary; baths in house; shaded lawns. All vegetables, fruit and poultry raised on the farm. German cooking. MRS. PHILIP PLUSCH, Prop.

Kindly mention this Guide when writing advertisers.

DAVENPORT CENTER, N. Y.

THE PINES, Davenport Center, Delaware, County, N. Y. Accommodations for 25 or 30. House new, with modern improvements. Mountain air; ample shade; broad piazza; large rooms; the finest of spring water. Three meals daily. Illustrated booklets sent upon application. For terms apply to R. L. HEBBARD, Prop.

EAST WINDHAM, N. Y.

THE SUMMIT HOUSE,

EAST WINDHAM, Greene Co., NEW YORK.



Elevation, 2,900 feet. Overlooks the Green Mountains of Vermont, White Mountains of New Hampshire and Berkshires of Massachusetts. View most beautiful and sublime in Catskills. The valley below stretches out for miles, dotted with a dozen villages. Rates reasonable. Accommodations the best.

A. LAMOREAU, PROP.

FLEISCHMANN'S, N. Y.

MAYES COTTAGE, Griffin's Corners, Delaware County, N. Y. Elevation, 2,000 feet; one-half mile from station; beautiful view of the mountains; excellent home cooking; 40 guests. For rates, apply to ALONZO GREEN, Prop.

Kindly mention this Guide when writing advertisers.

HAINES' FALLS, N. Y.

CENTRAL HOUSE, Haines' Falls, Greene County, N. Y. Elevation, 2,250 feet; one block from station; good hunting and fishing; plenty of shade; best home cooking; 75 guests. For particulars, address G. W. REED.

GLEN PARK HOUSE, Haines' Falls post-office, Greene County, N. Y. Elevation, 2,500 feet; one mile from station. Terms moderate; 100 guests. Send for circular. OWEN GLENNON, Prop.

ESTABLISHED 1865.

THE HAINES FALLS HOUSE, HAINES' FALLS, CATSKILL MOUNTAINS, NEW YORK.

ESTATE OF CHARLES W. HAINES. SPECIAL RATES FOR JUNE.
HEBREWS NOT ENTERTAINED. SEND FOR BOOKLET. WALTER B. DECAMP, MGR.



Lox-Hurst, Haines' Falls, N. Y.

Elevation 1,936 feet. Especially designed as a superior summer hotel; location and scenic beauty unsurpassed; sanitary improvements; hot and cold water, baths; large verandas; open fireplaces; beds with woven wire springs; all the comforts of home. Sixty guests. No Hebrews.

C. A. MARTIN,
Proprietor.

SHADY GROVE HOUSE, Haines' Falls, N. Y. Elevation, 2,000 feet; four blocks from station, on a high point in village overlooking the mountains. Table unexcelled. Special rates to families; 50 guests. Apply to H. & W. O'HARA, Props.

Kindly mention this Guide when writing advertisers.

SUNSET VIEW HOUSE, Haines' Falls, N. Y. Elevation, 2,800 feet; one mile from station. Situated in the most pleasant spot in the Catskills. Terms \$8 to \$10. Livery. Will meet all trains. Open June 1st till October 1st; 80 guests. **Mrs. J. E. HAINES, Prop.**

UNIQUE COTTAGE, Haines' Falls, Greene County, N. Y. Elevation 2,800 feet, commanding most picturesque view in Catskills. Will meet at station by appointment; 15 guests. For rates, apply **FRANK LASHER, Prop.**

HUNTER, N. Y.

THE ALPIEN, Hunter, N. Y. Beautifully situated in select and exclusive part of village; magnificent view; large, airy rooms; farm of 100 acres; exquisite cooking; pure mountain water; vegetables and poultry raised on farm. Twenty-five guests; rates reasonable. **G. W. SAXE, Prop.**



The Arlington,

Hunter, Greene Co.,
New York.

Elevation, 1,800 ft.
Sanitary improvements; baths.

A picturesque house
with picturesque surroundings.

Pearlman & Horowitz.

THE RIPLEY HOUSE,

Hunter, Greene Co., N. Y.

FIFTEENTH SEASON.

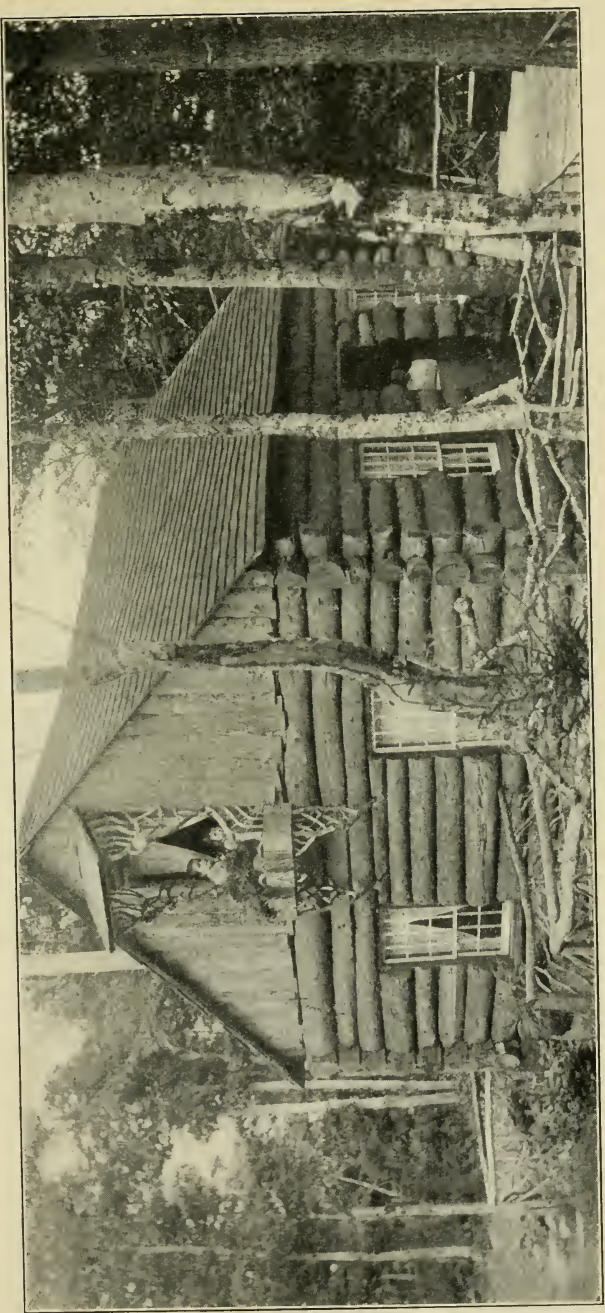
FIFTY GUESTS.

Baths, Hot and Cold Water, Lavatories.

A private, cozy home for people desiring high-class accommodations at reasonable prices. Magnificent view of Hunter Mountain and Colonel's Chair.

L. A. WOODWORTH, Prop.

Kindly mention this Guide when writing advertisers.



A PICTURESQUE LOG COTTAGE OF THE CATSKILLS.



THE KAATSBERG,

HUNTER, NEW YORK.

A homelike hotel for those seeking a restful place. Patronized by high-class people. Hotel modern in equipment; baths. Excellent table. Reasonable rates. Special prices for parties. 85 guests. Livery.

R. ELLIOTT, Prop.



Opens June 28th.

Passenger elevator, sanitary plumbing, open fires, electric bells, heated by the new hot-water process. Music afternoons and in the evening for dancing.

THE ST. CHARLES

is beautifully situated on the highest range of the Catskills and commands a most picturesque view of the mountains for many miles. Through parlor cars direct via West Shore R. R. Illustrated booklet and further information at New York office.

111 FIFTH AVENUE, Room 714, until June 25th, or
address J. H. BURTIS, Jr., Prop., HUNTER, N. Y.



WEST END HOTEL,

HUNTER, *Greene Co.*, NEW YORK.

New, attractive, well arranged. 3½ hours from New York; located near railroad terminus. Sanitary arrangements unexcelled. Wide piazzas Gas; hot and cold water on every floor. Bathrooms; speaking tubes.

Amusement hall adjacent to house. Good livery 130 guests. Terms according to location of room and length of stay. Special rates for June and September. Address

HUGH B. GARA, Prop.

KISKATOM, N. Y.

CATSKILL MOUNTAINS

Kiskatom Retreat House

KISKATOM, GREENE COUNTY, N. Y.

Located in a quiet, restful spot near the woods; lighted by gas; sanitary plumbing; scenic beauty is unsurpassed. Fleet of boats free on Kaaterskill, 100 Feet from House. 90 guests. Rates, \$6 to \$10 per week.

W. P. FISHER, Proprietor.

O'Hara House,

LEXINGTON,
GREENE CO.,
NEW YORK.

Twenty-sixth year under same successful management. Accommodates 125 guests. Largest and leading house in this—the most beautiful, healthful and attractive spot among the mountains—situated in the very centre of all principal points of attraction. Farm of 250 acres with farmhouse and dairy. Golf, boating, bathing, bowling and billiards. Send for circular.

B. O'HARA, Proprietor.



Laurel House
and Kateskill Falls
Greene Co.



In Stony Grove
Green
Co.

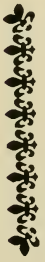
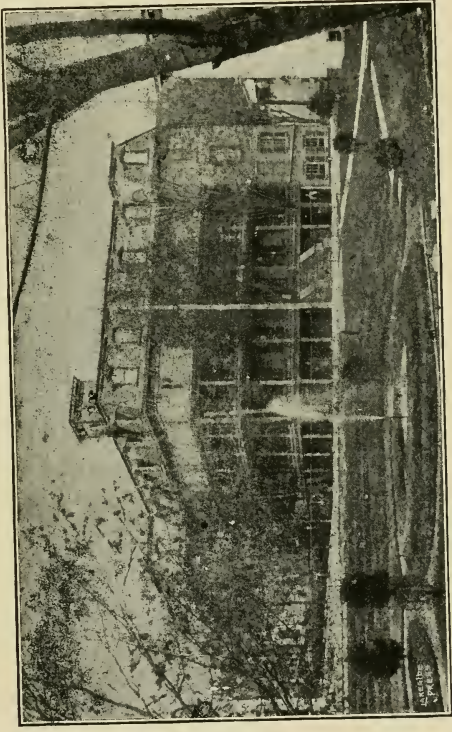
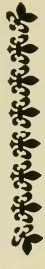
IDEAL CATSKILL MOUNTAIN SCENES.

MARGARETVILLE, N. Y.
IN THE CATSKILLS.

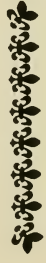
THE ACKERLY,



EXQUISITE scenery.
 Good roads.
 Elevation 1,356 feet. Pure, dry air; no malaria; no mosquitoes; excellent trout fishing and hunting.
 House open all the year. Special rates June and September.



ACCOMMODATIONS for 150 guests. All modern improvements, including baths, gas, new sanitary plumbing, etc. Large grounds containing tennis courts, croquet grounds, walks, swings, and plenty of shade. Pure water from private mountain spring.



For Booklets apply to **THOMAS HILL, Proprietor, Margaretville, N. Y.**

MYRTLE VILLA, Palenville, N. Y. Elevation, 500 feet. One-half mile from station; 10 miles to Catskill. Convenient trains to the city. Beautiful scenery. Excellent home cooking. Plenty of shade. Reasonable rates. Address JOHN R. HINMANN, Prop.

PHOENICIA, N. Y.

THE MARTIN.

PHOENICIA, Ulster Co., NEW YORK.

Elevation, 1,000 feet. Situated at entrance of the famous Stony Clove Pass. Scenic beauty unequaled. Sanitary plumbing, baths, hot and cold water. Electric call bells. Gas. For terms write

J. S. NEWMAN, Proprietor.

PINE HILL, N. Y.

BONNIE VIEW HOUSE

PINE HILL, ULSTER COUNTY, NEW YORK.

ELEVATION 1,800 FEET.

Situated in famous Horseshoe bend, on highest point in village, overlooking the valley and commanding an unsurpassed view of the mountains. Trout fishing on premises. Shaded grounds. Large verandas. Sanitary plumbing. Baths. Vegetables, milk and poultry from farm.

50 GUESTS.

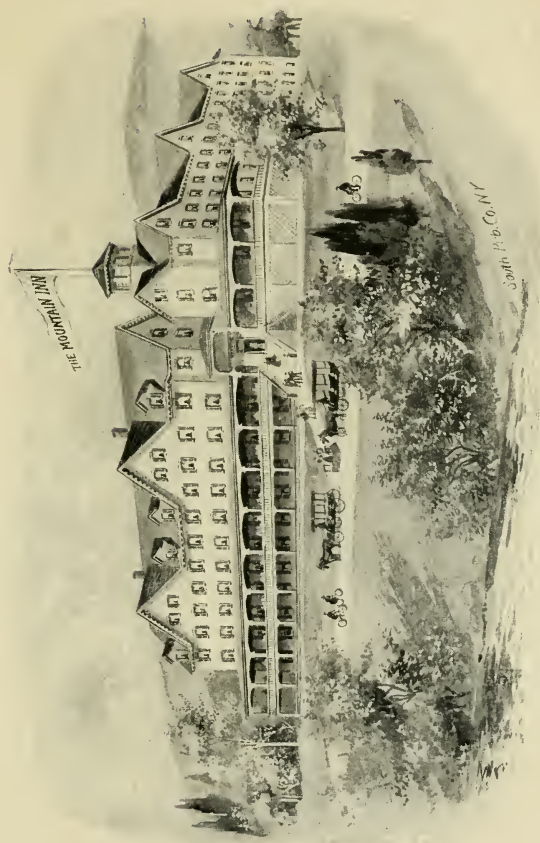
R. W. HILL, Proprietor.

THE BREWERTON, Pine Hill, Ulster County, N. Y. Elevation, 1,700 feet; one fourth mile from station; furnished with wire spring beds, with hair mattresses; sanitary plumbing; baths; lighted by gas. Open till November 1st. For booklet, apply to L. C. REYNOLDS.

THE LOOMIS, Pine Hill, Ulster County, N. Y. Elevation, 1,700 feet; one-eighth mile from station; beautiful view of the mountains and valley; excellent cooking. Near Catholic, Episcopalian and Methodist churches. Fifteen guests. For rates, apply to MRS. E. LOOMIS.

THE WATSON, Pine Hill, Ulster County, N. Y. Surrounded by large shade trees in select part of village; extensive grounds; sanitary plumbing; baths, hot and cold water. Best New York and Brooklyn references. For terms, write S. H. LEE, Prop.

Kindly mention this Guide when writing advertisers.



THE MOUNTAIN INN, PINE HILL, NEW YORK.

ROXBURY, N. Y.

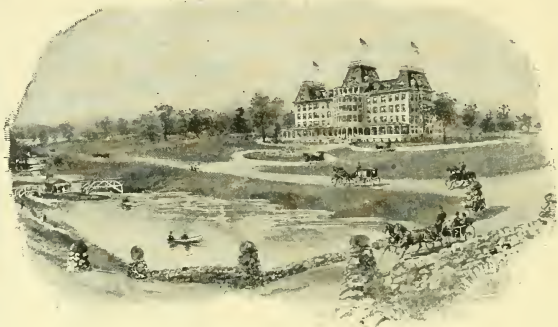
LAUREN VILLA, Roxbury, Delaware County, N. Y. Elevation, 1,500 feet; 60 miles from Kingston; located in one of the most picturesque spots in the Catskills; large, airy rooms; grounds well shaded; fishing; beautiful drives and walks. Send for booklet. G. W. LAUREN.

SHUTTS' FARM-HOUSE, Roxbury, Delaware County, N. Y. Select farm-house, one mile from station; surrounded by picturesque peaks of Catskills. Plenty of shade; boating and fishing; excellent cooking; vegetables, milk and poultry from farm. Free 'bus from station. For terms, apply to LAWRENCE SHUTTS, Prop.

Kindly mention this Guide when writing advertisers.

The Rexmere

Stamford, New York.



THE REXMERE will open July 1, 1902. It is new and with modern equipment is the most complete summer hotel in the Catskills. An ideal location in Churchhill Park, with walks, drives, lakes and woods. Grounds connect with stone walks of the village. A fine golf course is on the Rexmere grounds.

Churchill Hall

Stamford, New York.

The largest hotel in Stamford with the most central and convenient location. Capacity 300. Electric lights, steam heat, music hall, library, rooms with bath. Orchestra in attendance. Summer season, June 1st to October 1st.

Elevation of Stamford, 1,800 feet. A dry and healthful climate. New fast train service via West Shore and Ulster & Delaware Railroads. Time reduced to 4½ hours from New York.

Apply to E. R. JENKINS, Asst. Mgr., 3 Park place, New York, 10 to 12 A. M., May and June.

S. E. CHURCHILL, M. D.

Stamford, N. Y.

“QUEEN OF THE CATSKILLS.”

Ideal Summer Resort.

Elevation 1,800 feet.

**CLIMATE DRY, COOL, FREE FROM FOGS,
MOSQUITOES AND MALARIA.**

WATER system, costing \$45,000, supplied by pure, sparkling mountain springs. Streets and hotels electric lighted. Sewerage system complete. Five miles flagwalk. Amusements, golf, bowling, tennis, boating. Beautiful scenery on every side, intersected by shaded walks and drives. Lake and mountain streams for the angler.

Houses.	Capacity.	Houses.	Capacity.
The Westholm	40	Far View House and	
Churchill Hall	300	Cottage	40
Rexmere	150	Ingleside	30
Hotel Hamilton	60	Mountain View	
Kendall Place	60	House	70
Terry Homestead	25	The Atchinson	40
Cedar Hurst	35	Rosemont	20
Cold Spring	60	Greenhurst	25
Hubbell Cottage	15	Simpson Terrace	60

THE AMERICAN HOUSE, Tannersville, N. Y. Located on highest point in village—elevation, 2,500 feet; sanitary plumbing. Special rates to families; 75 guests; open June 1st to October 1st. C. L. WILTSE, Prop.

MANSION HOUSE, Tannersville, N. Y. Elevation, 2,000 feet; 150 guests; four hours from New York. This attractive summer resort is pleasantly located in the heart of the Catskills, central to all points of interest and within a few steps of depot. Large, cool and finely furnished rooms; 125 feet of piazza, 12 feet wide. Table unexcelled. Terms reasonable. GEORGE CAMPBELL, Prop.

WASHINGTON PARK HOUSE, Tannersville, Greene County, N. Y. Elevation higher than any house in Tannersville. One-half mile from station. Table first-class; terms reasonable. For particulars, address Mrs. CHRISTIAN OTT, Prop.

TANNERSVILLE COTTAGE, Tannersville, N. Y. Elevation, 2,300 feet; homelike cottage, at end of the village; excellent cooking; splendid view. Rates reasonable; 20 guests. M. O'HARA, Prop.

THE WELDEN HOTEL, Tannersville, N. Y. Elevation, 2,500 feet; 50 guests; rooms newly furnished; 600 square feet of piazza, overlooking village and mountains; one-eighth mile from station; meals served at any hour, if notified by wire. Hotel abundantly supplied with fresh vegetables, poultry and milk. Livery attached. DANIEL FROMER, Prop.

Hotel Martin, Tannersville, N. Y.

Elevation 2,200 feet. 150 guests. An up-to-date hotel, perfect in all its appointments; heated by steam; sanitary plumbing; baths; veranda 150 feet long; large, shady lawn; rooms large and well furnished; all the comforts of home; bowling alleys adjacent to hotel; livery. Send for booklet.

W. B. MARTIN.



COLD SPRING HOUSE,

L. Bieber, Prop.

TANNERSVILLE, Greene Co., NEW YORK

Elevation, 2,200 feet. Charmingly situated, surrounded by majestic mountain peaks. Air unsurpassed for dryness and purity. Extensive lawn, well shaded. Croquet, lawn tennis. Wide piazzas around house on both first and second floors. Large dancing hall. Music. Rooms large and airy; hair mattresses on box springs.

First-class Kosher table. Hungarian and German cooking. Vegetables and milk from our own farm. Coffee served ever afternoon. For rates apply L. BIEBER, Proprietor.

WOODLAND. N. Y.

"In the Heart of the Southern Catskills."

"Roxmor"

A wild, picturesque, quiet retreat. Private neighborhood; no hotels or boarding houses. Altitude, 1,200 feet. Excellent water. Modern house. Open all seasons.

For Booklet and particulars apply to

Woodland,
Ulster County, N. Y.

EDWARD B. MILLER.

Kindly mention this Guide when writing advertisers.

AN IDEAL PLACE

IN AN IDEAL SPOT.



THE PINES,

WINDHAM, N. Y.

ELEVATION, 1,800 FEET.

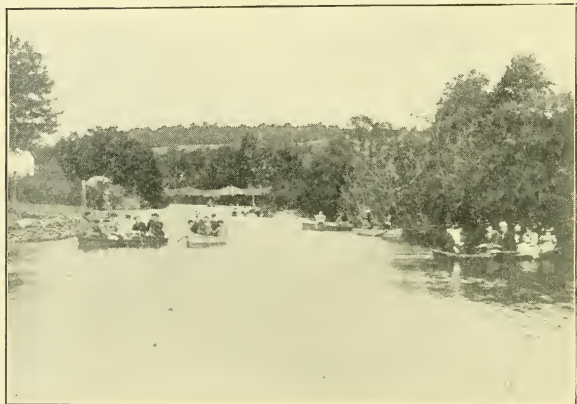
Situated in the heart of the Catskills.

Sanitary plumbing, lighted throughout by gas.

Every modern convenience. No Hebrews.

RATES: \$8.00 TO \$12.00 PER WEEK.

W. J. SOPER, Prop.



THE PINES—BOATING.



The Sherman Square Hotel

(American Plan)
Stands among the leading first-class
hotels of the country.

**In Management, Furnishings,
Sanitary Appointments,
Advantages of Location,
Cuisine and Service,
It Is Unrivalled.**

Only twenty minutes from all railroad
depots. Convenient to all
elevated and surface
railroads.

Broadway, cor. 71st Street, New York.

Walter Lawrence.

THE NEW HOFFMAN HOUSE,

J. P. CADDAGAN, Manager.



ABSOLUTELY FIREPROOF.

Madison Square, - - New York.

Catskill Evening Line

Connecting at Catskill with the
Catskill Mountain, Cairo, Otis,
Catskill & Tannersville Rail-
ways for all points in moun-
tains.

Send to Pier 43, Christopher Street, New York,
for circular with list of 550 Boarding Houses
and Hotels in this section.



The Luxury of Living

can be known only when there are no housekeeping cares; where every want is catered to and even anticipated.

Live While You Live

at a family hotel, where luxury, economy, and perfect service are combined at last. The family hotels offer all the privacy of a home and all the conveniences of an apartment, to the fastidious of moderate income. One of the newest and best of them is the most moderate priced,

THE

St. Mark's Ave. Hotel,

Cor. St. Mark's and Bedford Aves.,
BROOKLYN, N. Y.

Factories at Port Richmond, N. Y.

Nordlinger-Charlton Fireworks Co.

MANUFACTURERS OF

TRADEMARK.

UNEQUALLED

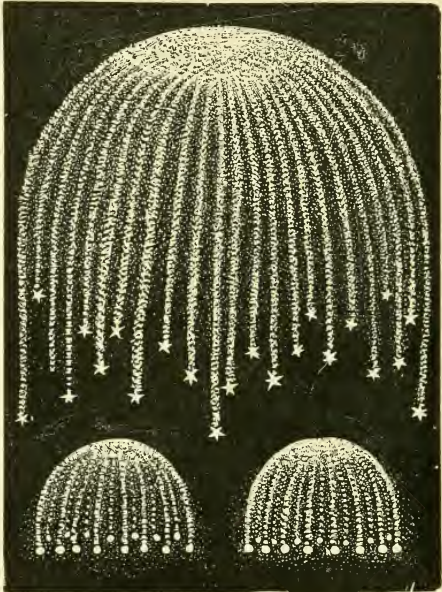
TWENTIETH-
CENTURY

FIREWORKS.

ACME
WAH SHING
TONG
CANNON
CRACKERS.

BALLOONS,
FLAGS,
LANTERNS,
ETC., FIRE
CRACKERS.

77
Chambers
Street,
3 Doors West of
Broadway,
New
York
City.



NEAPOLITAN BOMBSHELL OUR SPECIALTY.

To the Public Without a doubt this Company is producing the most satisfactory goods.

Our Brands are carefully made from selected materials, chemically pure; so well are we assured of their perfection, we give a guarantee with every piece. Send for **Catalogue** and look over our assortments. Those lettered "NN" to "WW" contain a good selection of Fireworks, including pieces. Those numbered from 1 to 8 contain **Aerial** and **Ground** effects; these are the modern displays and in greatest demand. Directions accompany each selection, making it easy for consumer to handle and make a successful display. A long string of fish is never carried up an alley. We always display the long strings and largest sizes, and the public are quick to recognize their merit as they appreciate such as bear the trademark "**Unequalled.**" Test them and see for yourselves.

All orders and correspondence will receive immediate attention; it is no trouble to show goods or answer inquiries.

Order or call early when the stocks are complete. You will also avoid the late rush.

Artistic Home Decorations.

We can show you effects NEVER before thought of, and at moderate prices, too.

Why have your house decorated and painted by inferior workmen, when you can have it done by skilled workmen—by artists—for the same price?

Write for Color Schemes, Designs, Estimates. Artists sent to all parts of the world, to execute every sort of Decorating and Painting. We are educating the country in color harmony.

**Wall Paper, Stained Glass,
Relief, Carpets, Furniture,
Parquetry Tiles,
Window Shades, Art Hangings,
Draperies, Etc.**

Wall Papers. New styles, designed by gold-medal artists. From 10 cents per roll up.

Draperies. We have draperies to match all wall papers from 15 cents a yard. This is a very important feature to attain the acme of artistic excellence of in decoration.

Decorative Advice. Upon receipt of \$1.00 Mr. Douthitt will answer any question of interior decorations—color harmony and harmony of form, harmony of wall coverings, carpets, curtains, tiles, furniture, gas fixtures, etc.

JOHN F. DOUTHITT,

American Tapestry Decorative Company,
222 Fifth Avenue, near 26th Street, New York City.

The Lamp of Steady Habits

The lamp that doesn't flare up or smoke, or cause you to use bad language; the lamp that looks good when you get it and stays good; the lamp that you never willingly part with, once you have it; that's

The New Rochester.

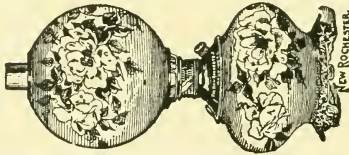
Other lamps may be offered you as "just as good"—they may be, in some respects, but for all around goodness, there's only one. *The New Rochester*. To make sure the lamp offered you is genuine, look for the name on it; every lamp has it. (300 Varieties.)

Old Lamps Made New.

We can fill every lamp want. No matter whether you want a new lamp or stove, an old one repaired or refinished, a vase mounted or other make of lamp transformed into a **New Rochester**, we can do it. Let us send you literature on the subject.

We are SPECIALISTS in the treatment of diseases of Lamps. Consultation FREE.

THE ROCHESTER LAMP CO., 38 Park Place & 33 Barclay St., New York.



RUNNYMEDE

Special Pure Rye.
A Whiskey of Quality.



R. F. Balke & Company

Distillers

Cincinnati and Baltimore

For Sale by . . .

Park & Tilford,
Acker, Merrall & Condit, } New York City.

\$3.00 SAVED

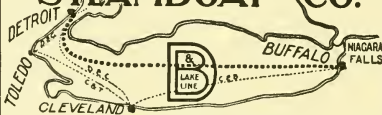
TO ALL POINTS EAST AND WEST

VIA THE **D & B LINE.**

"Just Two Boats"
BETWEEN
DETROIT & BUFFALO



DETROIT & BUFFALO STEAMBOAT CO.



COMMENCING JUNE 10TH

Improved Daily Express Service (14 hours) between

DETROIT AND BUFFALO

Leave DETROIT Daily . . . 4. P. M.

Arrive at BUFFALO . . . 8.00 A. M.

Connections with all railroads for points EAST.

Leave BUFFALO Daily . . . 5.30 P. M.

Arrive at DETROIT . . . 7.00 A. M.

Connecting with Earliest trains for all points in MICHIGAN and the WEST, also with D. & C. LINE of steamers for all Great Lake Summer Resorts. Send 2c. for illustrated pamphlets and rates.

Rate between Detroit and Buffalo \$3.50 one way, \$6.50 round trip. Berths \$1.00, \$1.50. Staterooms \$2.50 each direction.

IF your railway agent will not sell you a through ticket, please buy a local ticket to Buffalo or Detroit, and pay your transfer charges from depot to wharf. By doing this we will save you \$3.00 to any point East or West.

A. A. SCHANTZ, G. P. A., Detroit, Mich.

GEORGE E. HOWARD, President and Treasurer.

Springfield Waste Co., SPRINGFIELD,
MASS.

COTTON AND WOOL WASTE

Machined Waste for Railway and Machinists' Use
A SPECIALTY.

PETER BRAU LAGER BEER OF
SIX MONTHS' BREW



Brewed exclusively out of the finest malt and not equaled in quality by any other Domestic or Western beer; can justly be placed on a par with the best imported Bavarian beer, being of equal purity and taste.



The Wm. Peter Brewing Co.

UNION HILL, NEW JERSEY

CONGRESS SPRING—A Saline-Alkaline Water.

CATHARTIC AND ALTERATIVE OF HIGH MEDICINAL VIRTUES.

As a Cathartic—One pint or less some thirty minutes before breakfast.

For Indigestion, Dyspepsia, Acid Stomach, Torpid Liver and Inactive Condition of the Kidneys—One-third of a pint directly after each meal.

For Rheumatism, Malaria, Eczema, Scrofula Taints and All Diseases of the Blood—One-quarter of a pint each time, and from four to six times a day.

For Insomnia—One-half pint just before retiring acts as a SEDATIVE, producing quiet sleep.

CONGRESS WATER—It's popular because it is healthful. It has long been noted for the desired results it brings, and for the clean after-taste it leaves on the palate, an infallible test of its purity. Send for booklet.

All Druggists, Grocers, Hotels and

CONGRESS SPRING CO., Saratoga Springs, New York.

F. SKELTON, 608 SIXTH AVENUE,
NEW YORK.

Near 36th St., East Side (formerly at 1325 Broadway).

MANUFACTURER OF

Awnings, Tents and Flags,

Patent French Roller Awnings and Spring Roller Awnings. Imported and Domestic Canvas and Bunting for Sale. Canopies and Dancing Crash. Camp Chairs, Dining Chairs, Round Tables and Extension Tables on Hire.


Telephone Call, 890 38th.

TRADE SUPPLIED.

“Valve-Oleine”

**675 DEGREES
FIRE TEST. . .**

Master Mechanics, Purchasing Agents, Engineers and Practical Builders of costly Steam Plants and Locomotives, etc., will be pleased to know that a Lubricant is now produced of such extraordinary high fire test as to make it proof against the great heat to which it is subjected, and is therefore a **PERFECT** lubricator where products of lower grade and fire tests pass off at once, leaving the parts subject to wear, or greatly increasing the consumption of oil.

“**VALVE-OLEINE**” is a product in the highest state of filtration, is of the greatest viscosity, is entirely free from all acids and absolutely non-corrosive, and without doubt the finest and most thoroughly reliable **CYLINDER LUBRICANT** now on the market, and will naturally lubricate 200 to 300 per cent. more than products of lower test.  It is not only the **BEST**, but the most **ECONOMICAL** lubricant. Manufacture and sale controlled exclusively by

The Reliance Oil & Grease Co.,
CLEVELAND, OHIO.



Agents Wanted Everywhere. Write for **Full Particulars** and our **New Catalogue** of large line of products. **Samples Free.** Send Two-Cent Stamp for “**Gems of Art**”—Free on Application Direct from Machinery Users.



"AMERICA'S GREATEST FIREWORKS."

Fireworks[®] and Decorations

FOR FOURTH JULY,
GARDEN AND LAWN PARTIES.

Assortments all Aerial, also with Set-pieces
from \$5.00 up. Special Set-pieces
made to order at short notice.

JAPANESE LANTERNS, BALLOONS and
DAYLIGHT FIREWORKS.

Consolidated Fireworks Co.
of America,
9 and 11 Park Place, New York City.

When in New York

Save your time by using the

Telephone Service.

THOUSANDS OF PUBLIC
TELEPHONE STATIONS IN
NEW YORK.
A LOCAL CALL COSTS TEN
CENTS.

MAP OUT YOUR DAY BY TELEPHONE AND
YOU WILL SAVE

TIME, TROUBLE and EXPENSE.

Have you heard of

Melloweens?

They are a delicious confection. We are sure they will please you.

Our Orange Drops

are the best that's made.

Our *Special Summer Package* of assorted

Chocolates and Newsports

is the best *quality and quantity* on the market. All sell at **10 cents per package**. Ask for them on the Trains, at the Depots and News Stands.

Our Chocolate Jelly and Always-Ready Cake Icing,

all flavors, require *no sugar, no boiling*. Put up in screw-top glass jars and sell at 20 cents per jar. Insist on having the *A. R. Brand*. All leading grocers sell our *Chocolate Jelly*.

Our Motto: "Purity of the first importance."

MANUFACTURED BY

The Reynolds Confectionery Co.,
709 Fulton St., Borough of Brooklyn.

SPEND YOUR VACATION ON THE GREAT LAKES



TRAVEL VIA
**THE DETROIT
AND
CLEVELAND
NAVIGATION CO.**
**THE
COAST
LINE**

**DAILY
SERVICE
BETWEEN
DETROIT
AND
CLEVELAND**

**DOUBLE DAILY
SERVICE
BETWEEN
CLEVELAND,
PUT-IN-BAY
AND
TOLEDO.**

Visit
PICTURESQUE

**MACKINAC ISLAND
AND
MICHIGAN SUMMER RESORTS.**

TIME TABLE BETWEEN

DETROIT AND CLEVELAND

Leave DETROIT, daily, . . . 10.30 p. m.
Arrive CLEVELAND, . . . 5.30 a. m.
making connections with all railroads
for points East.

Leave CLEVELAND, daily, . . . 10.15 p. m.
Arrive DETROIT, . . . 5.30 a. m.
connecting with

**D. & C. Steamers for Mackinac,
"Soo," Marquette, Duluth, Min-
neapolis, St. Paul, Petoskey, Mil-
waukee, Chicago and Georgian Bay**
also with all railroads for points in
MICHIGAN and the West.

Day Trips between Detroit and Cleve-
land during July and August.

MACKINAC DIVISION

Leave TOLEDO Mondays and *Satur-
days 9.30 a. m. and *Tuesdays and
Thursdays 4.00 p. m.

Leave DETROIT Mondays and *Satur-
days 5.00 p. m., and *Wednesdays and
Fridays 9.30 a. m.

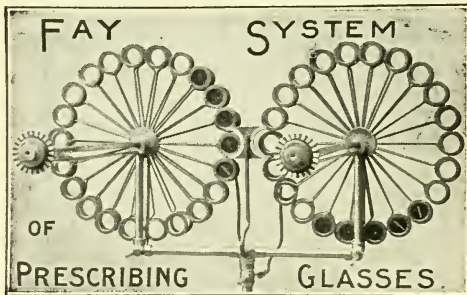
*Commencing June 21st.

Send 2 cents for illustrated pamphlet.

ADDRESS : :
A. A. SCHANTZ, G. F. A., Detroit, Mich.



AMERICA'S FINEST PRODUCT.



G LASSES prescribed by this system relieve headaches and all nervous disorders caused by eye strain.

We are manufacturers of new instruments for testing the eyes. Send for booklet. If your optician does not use this system write or call on

W. G. FAY MFG. Co., 178 Broadway, N. Y.



SNAP THE WHOLE PARADE

PERFECTION IN PHOTOGRAPHY

Has been secured by the AL-VISTA CAMERA. It produces the entire panoramic view. It is compact, easy to use, sure in action. It is sold on its merits. We demonstrate this by selling you one ON EASY PAYMENTS. Ask for catalogue, select the camera you wish, and you may pay for it in weekly or monthly sums. We make it easy for you to get the best.

MULTISCOPE & FILM CO.

1260 Jefferson St., Burlington, Wis.



ESTABLISHED 1853.

INCORPORATED 1892.

SWAN & FINCH CO.

REFINERS and DEALERS IN OILS.

151 MAIDEN LANE, NEW YORK.

ALDEN S. SWAN, Pres. CHAS. N. FINCH, V-Pres. & Treas
JAMES C. PEABODY, Secy. & Mgr.



Established 1865.
**FRED HOLLENDER
& CO., Inc.,**
C. TIELENIUS, Pres.,
Importers of
Pilsener, Munchner,
Frankenbrau, Humb-
ser, Culmbacher and
Graetzer Beer.
Sole Agents for the
American, Barthol-
omay, Rochester and
Genesee Brewin-
Co.'s, of Rochester,
New York, "RIENZI
BEER."

Sole Agents and Im-
porters of Birresborn
Natural Mineral
Water.

Office and Wholesale Depot, 115-119 Elm Street.

CATSKILL MOUNTAINS.

If you want to purchase, lease or sell a cottage,
building site, Summer hotel, land in the vicinity of
Onteora, Elka, Twilight, Sunset, or Santa Cruz
Parks, Haines' Falls, Tannersville, Hunter, Jewett,
Windham, Cairo or anywhere in the Catskill region.

Address, CORNELIUS J. DROOGAN, Counselor-at-Law, Catskill, N. Y.

Established 1876. **NATIONAL PAINT WORKS,** WILLIAMSPORT, PA.

Manufacturers of **HIGH-GRADE PAINTS** for Houses, Barns, Roofs,
Bridges, Freight Cars, Etc. Our paints are in use in every section
of this country, and for a variety of purposes, which establishes
our ability to meet every requirement. Prices are based on cur-
rent cost of manufacture. Buy your paint direct, insuring fresh
stock and lowest cost. Samples sent on application.

PAIN'S
Electric 
Fireworks

WILL BE THE SENSATION OF 1902.

As far advanced in effect as the electric light is over the old-fashioned candle, and no increase in cost. A marvel of shimmering brightness. ❀ ❀ ❀ ❀ ❀

LIQUID. ❀ ❀ ❀ SCINTILLATING.

Pain's Aerial Wonders.
Manhattan Beach Bombs.

Imported Chinese Crackers
and all requisites for JULY 4TH.

Pain's Peerless Pyrotechnics.

Orders by mail promptly executed.
Catalogues on application.

The Pain Manufacturing Co.,
No. 12 PARK PLACE, NEW YORK.
Telephone, 4819 Cortlandt.

Not Artful in Cost Nor Artless in Cut.

But ART in genuine tailoring is
what you are after.

We supply this.

We make good custom clothing
from \$25.00 per suit and up.

Custom clothing up to the hour
in cut.

Custom clothing of the latest and
most fashionable patterns.

Custom clothing that will save you
money because it will wear.

Custom clothing, not costly, but
costly to be without.

C. R. Latham & Co.

335 BROADWAY,
Cor. Worth St.,

C. R. LATHAM,
J. W. CROMIE.

NEW YORK CITY.

SEABOARD

Air Line Railway.

"Capital City Route—South."

Shortest, Best and Quickest Line to the Winter
Resorts of Florida and the South.

The Route of

*Florida and Metropolitan Limited,
Atlanta Special,
Seaboard Express,
Seaboard Fast Mail.*

The Line to the Links.

All the famous Golf Links of the South are reached via the Seaboard: Pinehurst, Southern Pines, Camden, Savannah, Jacksonville, St. Augustine, Ormond. Palm Beach, Miami, Winter Park, Belleview and Tampa Bay.

**Superb Train Service
with Through Sleeping
Cars from New York.**

*When Going South, Let Us Plan
Your Tour.*

Call on, or address the undersigned for all information pertaining to Tickets, Rates, Sleeping Car Reservations, Stop-over privileges, etc.

CHAS. L. LONGSDORF, N. E. P. A.,
306 Washington St., Boston, Mass.

J. C. HORTON, Eastern Passenger Agent,
1183 Broadway, New York.

J. L. ADAMS, General Eastern Agent,
1183 Broadway, New York.

C. B. RYAN, General Passenger Agent,
Portsmouth, Va.

THE IMPROVED
RUSSIAN and TURKISH BATHS

In Connection with Hotel.



18 Lafayette Place, New York.

Open Day and Night.

GENTLEMEN ONLY.

For Over 60 Years

Mrs. Winslow's Soothing Syrup

has been used for over SIXTY YEARS by MILLIONS of Mothers for their CHILDREN while TEETHING, with perfect success. IT SOOTHES the CHILD, SOFTENS the GUMS, ALLAYS all pain, CURES WIND COLIC, and is the best remedy for DIARRHOEA. Sold by Druggists in every part of the world. Be sure and ask for Mrs. Winslow's Soothing Syrup and take no other kind.

25 Cents a Bottle.

An Old and Well-tried Remedy

1862

1902

H. W. PALEN'S SONS

Dealers in

Lumber

— OF ALL KINDS —

Timber, Etc.
Building Materials

Manufacturers of

General Wood Work

Cor. James and Pine Streets
KINGSTON & NEW YORK

WESTINGHOUSE



HIGH SPEED BRAKES

*Endorsed by the
Highest Railway Authorities*

THE

Westinghouse Air Brake Co.

PITTSBURG, PA.

For Town or Country Use "Silver Plate That Wears."

**"1847
Rogers
Bros."**

**"Silver
Plate
That
Wears"**

Beauty and Durability

in Spoons, Forks, Knives, etc.,
are assured if you purchase
those bearing this stamp:

"1847

ROGERS BROS."

Remember the above complete
trade-mark—take no substitute.
There are "Rogers" and others
claimed to be "just as good" but
like all imitations, they lack
the merit and value identified
with the original and genuine
"1847 ROGERS BROS."

Send for Catalogue No. 61.

MERIDEN BRITANNIA CO.,

(International Silver Co., Successor.)

MERIDEN, CONN.

The best tea and coffee sets, tu-
reens, waiters, etc.,
are stamped with
this mark

MADE AND
GUARANTEED BY



**SOLD
BY
LEADING
DEALERS.**

NEW YORK SALESROOMS:

**218 Fifth Ave., cor. 26th St., and
9, 11, 13 Maiden Lane.**



THE New Grand Hotel
Catskill Mountains,
Grand Hotel Station, Ulster County, N. Y.
Open June 25.

Admirably located in the heart of the Catskill Mountains. Situated on a terrace of Summit Mountain, 2,500 feet above sea level, it commands an unrivalled view of the Catskills. The even temperature, dry atmosphere, pure water, magnificent scenery, and the homelike character of the hotel make it an ideal place for summer tourists. The hotel has a frontage of 650 feet, is three stories high, and broad piazzas extend along the front of the main building. It is handsomely furnished, having suites with private baths and open fireplaces. The cuisine is maintained at a high standard. Acres of terraced lawn, interspersed with flowers and shrubbery and wooded Alpine cliffs, afford walks and drives permitting many magnificent and extended views. The hotel is only three hours from New York and may be reached by the West Shore and Ulster & Delaware Railway. Pullman car from 42d St. to Hotel without change. See West Shore time table. For bookings and information address at Fifth Avenue Hotel, New York, or Grand Hotel, Ulster County.

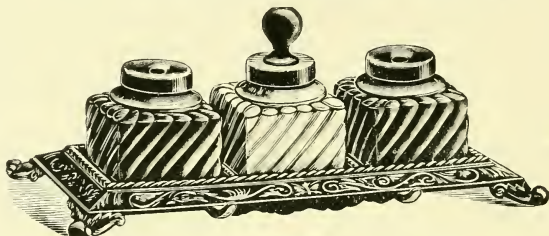
NEW GOLF LINKS.

COL. C. A. LINSLEY,
Proprietor,

Who opened and ran the Hotel Bon Air, Augusta, Ga., for seven years. The Bon Air is the Parlor Hotel of the South. Is also building the Palmetto, at North Augusta, Aiken Co., S. C., to be opened Dec. 1, 1902.

PAUL'S Choice Inks

ARE ALL
U. S. Government Standard Bottles.



PAUL'S NO 6 EXTRA FLUID SET.

DO you know Paul's Choice Inks? If you send \$1.00 to our nearest branch office we will deliver by express, paid, one outfit containing Enameled Tray and three Automatic Safety Filled Ink Wells (one each, fluid, crimson and mucilage).

Safety Bottle & Ink Co.,

Factory and Principal Office:
117-119 9th Street,

JERSEY CITY, N. J.

Goods may be obtained for city distribution only, as follows:

New York City,
111 Nassau St.;
Boston, Mass.,
12 Pearl St.;
Chicago, Ill.,
134 East Van
Buren St.;
Philadelphia, Pa.,
1211 Filbert St.;
Baltimore, Md.,
210 E. Lexington St.;
St. Louis, Mo.,
415 Mermod-
Jaccard Bldg.



·PAST·

U. S. GOVERNMENT STANDARD.



·PRESENT·

HOTEL, BOARDING
AND FARM HOUSE
KEEPERS,

Attention!

COOK BOOKS



MME. GESINE LEMCKE,

Author of the following Books

THE EUROPEAN AND AMERICAN CUISINE,
PRICE, \$2.00.

DESSERTS AND SALADS,
PRICE, \$1.00.

CHAFING-DISH RECIPES,
PRICE, 75 CENTS.

HOW TO LIVE ON 25 CENTS A DAY,
PRICE, 25 CENTS.

PRESERVING AND PICKLING,
PRICE, 75 CENTS.

*Any of the above valuable books will be
sent, prepaid, on receipt of price.*

JOHN J. PRIAL,

Room 805, St. James Bldg., 1133 Broadway, N. Y.



The Luxury of Living

can be known only when there are no housekeeping cares; where every want is catered to and even anticipated.

Live While You Live

at a family hotel, where luxury, economy, and perfect service are combined at last. The family hotels offer all the privacy of a home and all the conveniences of an apartment, to the fastidious of moderate income. One of the newest and best of them is the most moderate priced,

THE St. Mark's Ave. Hotel,

Cor. St. Mark's and Bedford Aves.,
BROOKLYN, N. Y.

INDEX TO ADVERTISEMENTS.

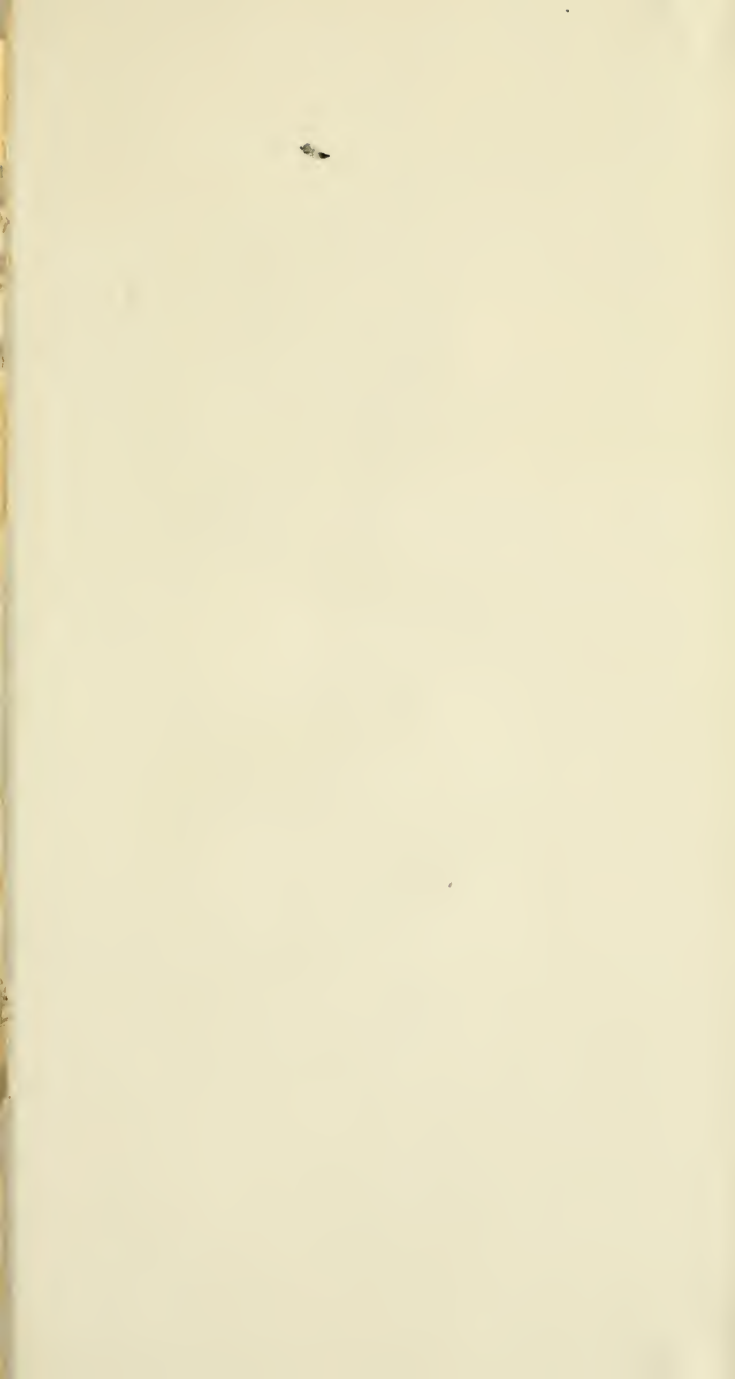
Ackerly, The, Margaretville	77
Alpien, The, Hunter	72
American House, Tannersville	82
Arlington, The, Hunter	72
Atchinson, The, Stamford	81
Balke & Co., R. F., Cincinnati	91
Bartholomay Brewery Co., Rochester	98
Big Indian Houses	69
Bonnie View House, Pine Hill	78
Brewerton, The, Pine Hill	78
Catskill Evening Line	86
Catskill Houses	69
Central House, Haines' Falls	71
Churchill Hall, Stamford	80
Cold Spring, Stamford	81
Cold Spring House, Tannersville	83
Congress Spring Co., Saratoga	93
Consolidated Fireworks Co., New York	95
Cook Books, Mme. Gesine Lemcke	109
Davenport Center Houses	70
Detroit and Buffalo Steamboat Co.	92
Detroit and Cleveland Navigation Co.	97
Douthitt, Jno. F., New York	89
Droogan, Cornelius J., Catskill	100
East Windham Houses	70
Far View House, Stamford	81
Fay Mfg. Co., W. G., New York	98
Fleischmann's Houses	70
Glen Park House, Haines' Falls	71
Grant House, Catskill	69
Glenhurst, Stamford	81
Griffin's Corners Houses	70
Haines' Falls Houses	70, 71
Haines' Falls House, Haines' Falls	71
Hamilton, Hotel, Stamford	81
Hollender & Co., New York	100
Hubbell Cottage, Stamford	81
Hudson River Day Line	67
Hunter Houses	72, 75
Ingelside, Stamford	81
Jefferson Cottage, Catskill	69
Kaatsberg, The, Hunter	74
Kindall Place, Stamford	81
Kiskatom Houses	75
Kiskatom Retreat House, Kiskatom	75
Lafayette Baths and Hotel, New York	104
La Ment's Hotel, Big Indian	69
Latham & Co., C. R., New York	102
Lauren Villa, Roxbury	79
Lexington Houses	76
Loomis, The, Pine Hill	78
Lox-Hurst, Haines' Falls	71
Mansion House, Tannersville	82
Margaretville Houses	77
Martin, Hotel, Tannersville	82
Martin, The, Phoenicia	78

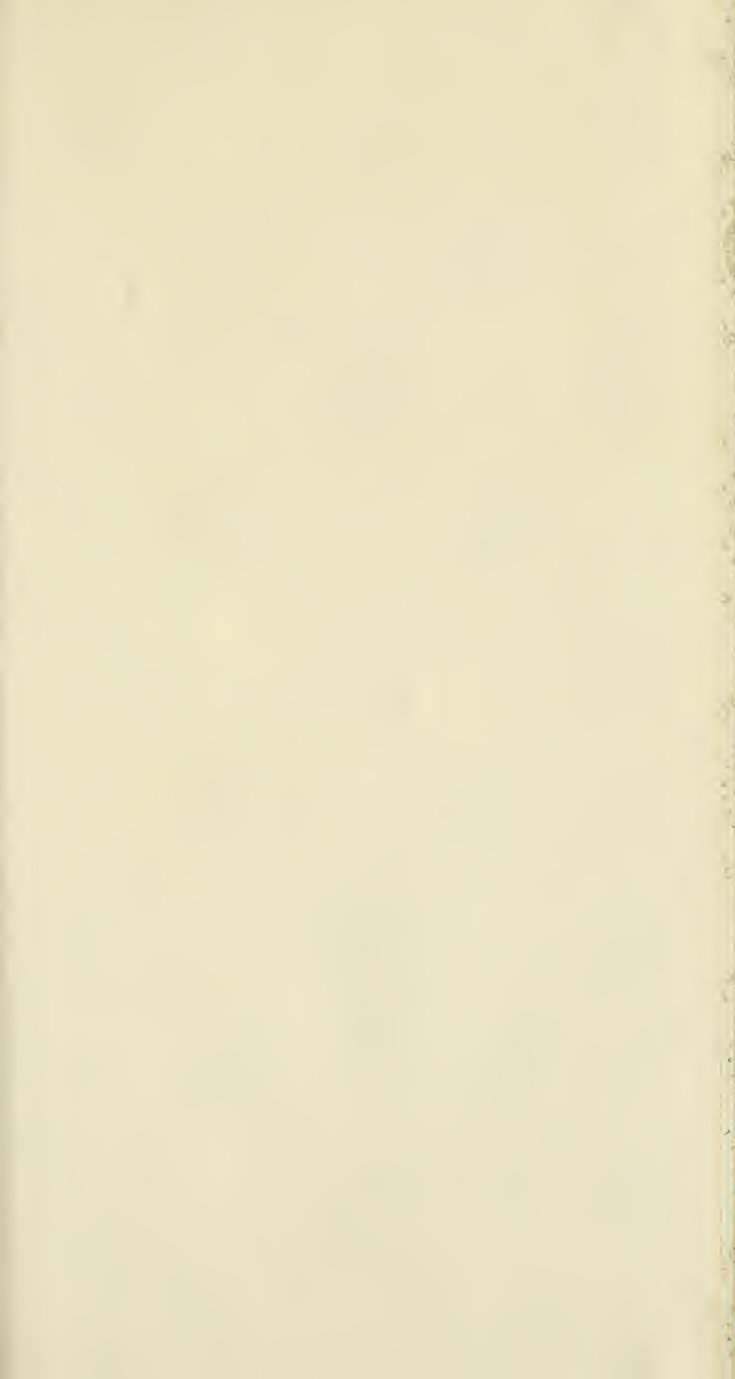
JUL 12 1888

INDEX TO ADVERTISEMENTS—CONT'D.

Mayes Cottage, Griffin's Corners	70
Meriden Britannia Co., New York	106
Mountain Inn, Pine Hill	79
Mountain View, Stamford	81
Multiscope and Film Co., Burlington	98
Myrtle Villa, Palenville	78
National Paint Works, Williamsport	100
New Grand Hotel, Grand Hotel Station	107
New Hoffman House, New York	86
New York Telephone Co	96
Nordlinger-Charlton Fireworks Co., New York	88
O'Hara House, Lexington	76
Palen's Sons, H. W., Kingston	105
Pain's Manufacturing Co., New York	107
Palenville Houses	78
Paul's Inks and Mucilage	108
Peter Brewing Co., The William, Union Hill	93
Phoenicia Houses	78
Pine Hill Houses	78, 79
Pines, The, Davenport Center	70
Pines, The, Windham	84
Reliance Oil and Grease Co., Cleveland	94
Reynolds Confectionery Co., Brooklyn	96
Pexmere, The, Stamford	80
Ripley House, Hunter	72
Rochester Lamp Co., New York	90
Rosemont, Stamford	81
Roxbury Houses	79
Rokmor, Woodland	83
Safety Bottle and Ink Co.	108
Seaboard Air Line Ry.....	102
Shady Grove House, Haines' Falls	71
Sherman Square Hotel, New York	85
Shutts' Farm House, Roxbury	79
Simpson Terrace, Stamford	81
Skelton, F., New York	93
Springfield Waste Co., Springfield	93
St. Charles, Hotel, Hunter	74
St. Mark's Hotel, Brooklyn	87, 110
Stamford Houses	80, 81
Stevens Arms & Tool Co., J., Chicopee Falls.....	110
Summit Hill House, Catskill	69
Summit House, East Windham	70
Sunset View House, Haines' Falls	72
Swan & Finch Co., New York	100
Swiss House, Catskill	69
Tannersville Cottage, Tannersville	82
Tannersville Houses	82
Terry Homestead, Stamford	81
Unique Cottage, Haines' Falls	72
Washington Park House, Tannersville	82
Watson, The, Pine Hill	78
Welden Hotel, Tannersville	82
West End Hotel, Hunter	75
Westholm, The, Stamford	81
Westinghouse Air Brake Co., Pittsburg.....	105
Windham Houses	84
Winslow's Soothing Syrup	104
Woodland Houses	83

R.B. 136.







DOBBS BROS.
LIBRARY BINDING

ST. AUGUSTINE

FLA.



LIBRARY OF CONGRESS



0 014 107 753 3

