

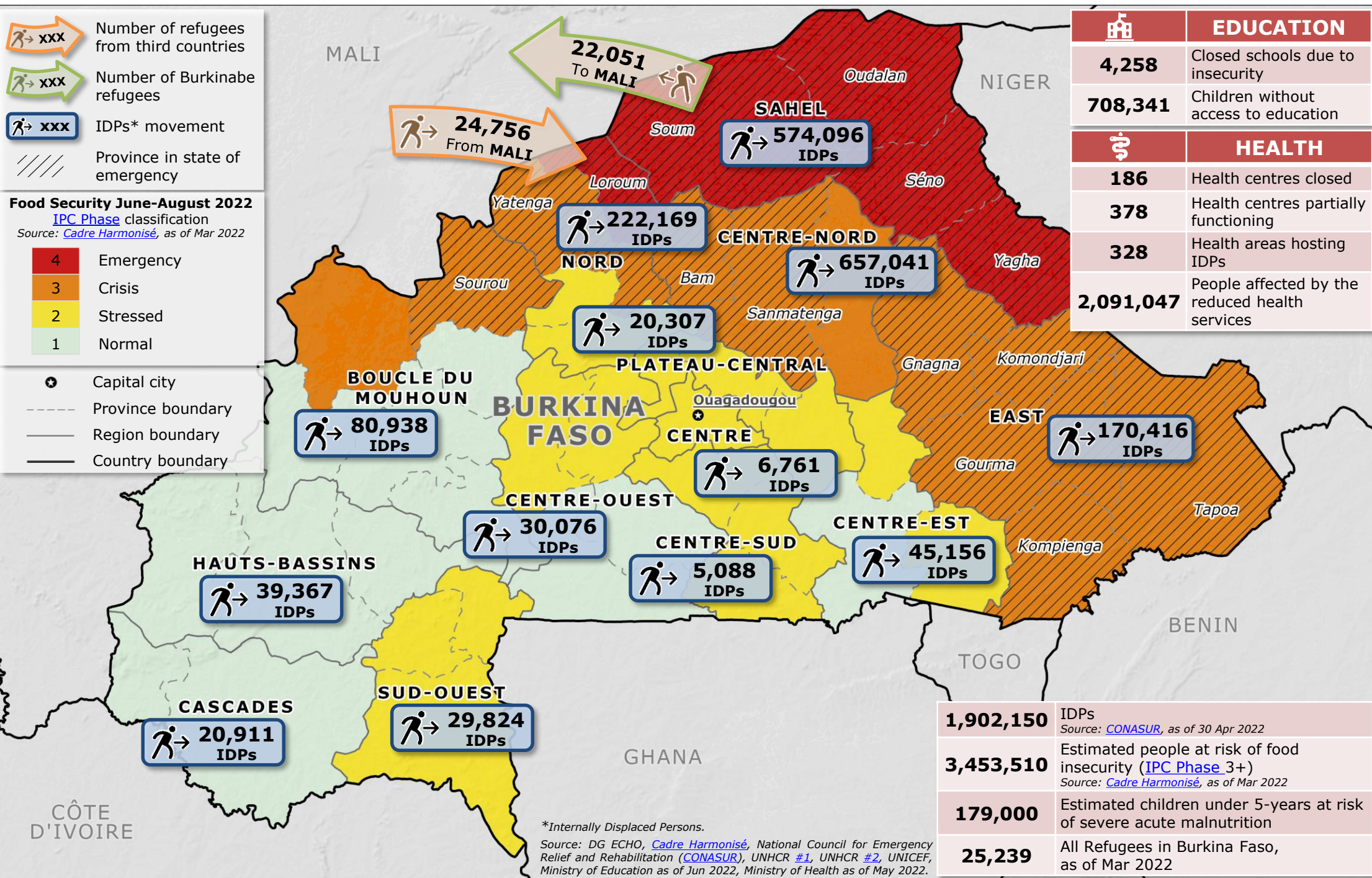
# Burkina Faso | Humanitarian Crisis (June 2022)

- xxx** Number of refugees from third countries
- xxx** Number of Burkinabe refugees
- xxx** IDPs\* movement
- Province in state of emergency

**Food Security June-August 2022**  
 IPC Phase classification  
 Source: [Cadre Harmonisé](#), as of Mar 2022

4	Emergency
3	Crisis
2	Stressed
1	Normal

- Capital city
- Province boundary
- Region boundary
- Country boundary



	EDUCATION
4,258	Closed schools due to insecurity
708,341	Children without access to education
	HEALTH
186	Health centres closed
378	Health centres partially functioning
328	Health areas hosting IDPs
2,091,047	People affected by the reduced health services

1,902,150	IDPs Source: <a href="#">CONASUR</a> , as of 30 Apr 2022
3,453,510	Estimated people at risk of food insecurity (IPC Phase 3+) Source: <a href="#">Cadre Harmonisé</a> , as of Mar 2022
179,000	Estimated children under 5-years at risk of severe acute malnutrition
25,239	All Refugees in Burkina Faso, as of Mar 2022

\*Internally Displaced Persons.  
 Source: DG ECHO, [Cadre Harmonisé](#), National Council for Emergency Relief and Rehabilitation ([CONASUR](#)), UNHCR #1, UNHCR #2, UNICEF, Ministry of Education as of Jun 2022, Ministry of Health as of May 2022.