

207  
743

国立国会図書館 孝貞六助誓力働 前後編 207-743



ガラス使用

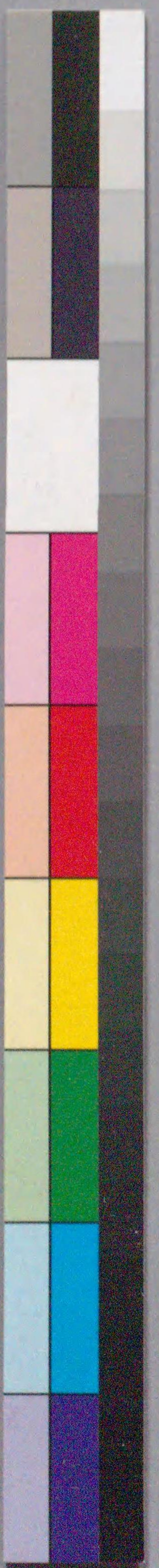




孝貞六

孝貞六助誓力働

五渡亭國貞画





首之卷



Handwritten text in cursive script, likely a preface or introduction, mentioning '孝貞六助誓力働' and '松南齋眉山識'.

文政

四年辛巳夏四月稿成  
翌五年壬午孟春發行

松南齋眉山識



文政五玄黙敦辨  
孟春日新梓鐫



大彦山真録  
正説繪本  
孝貞六助誓力働

著述 松南齋眉山 馬喰町二丁目  
出像 勝川春亭 錦木堂版







現休麓山 彦紫 篠

高利  
照政の家臣

良岡  
一味齋

後  
毛谷村の  
六助

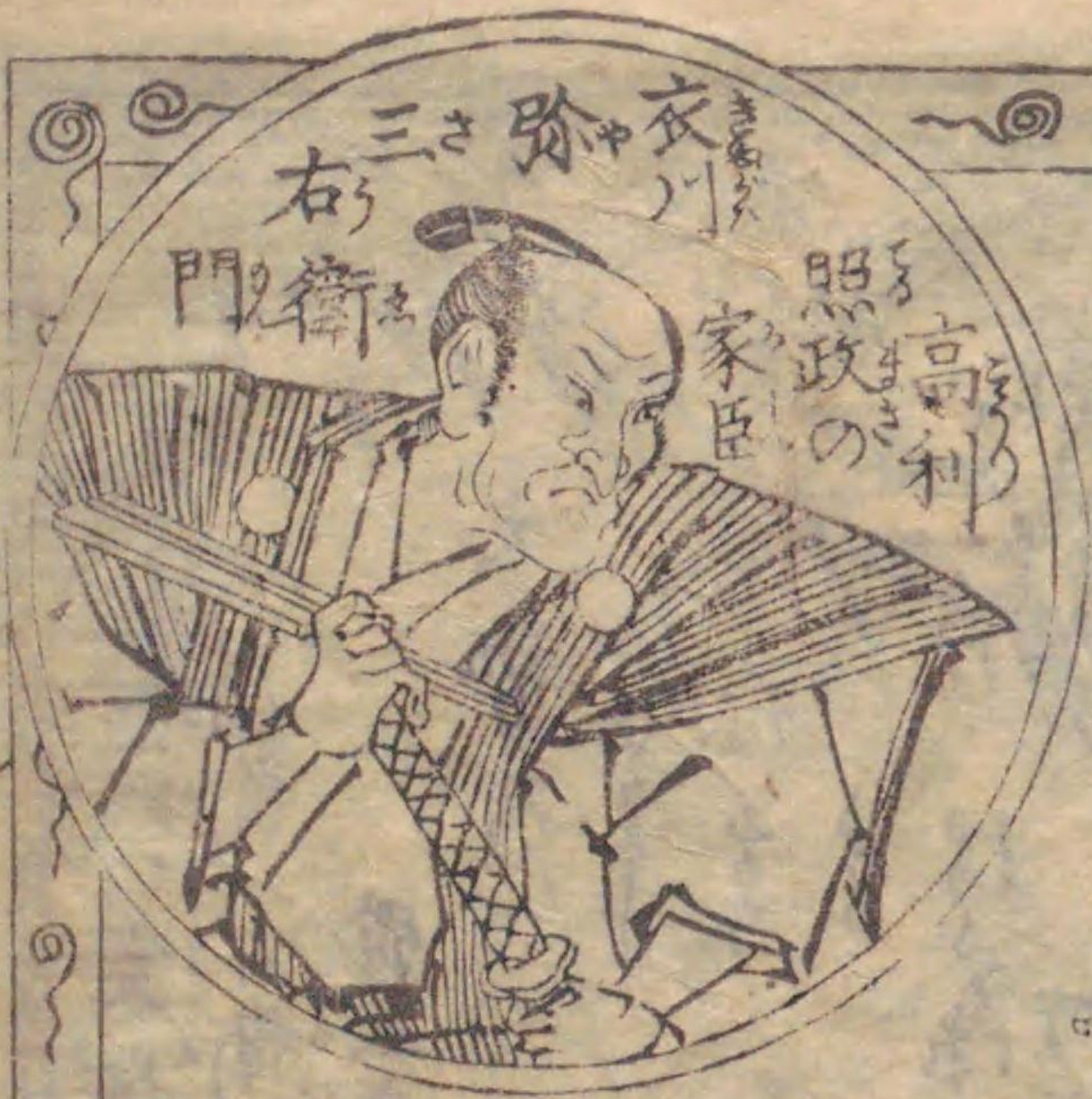
木來  
孫作助

足利義昭の

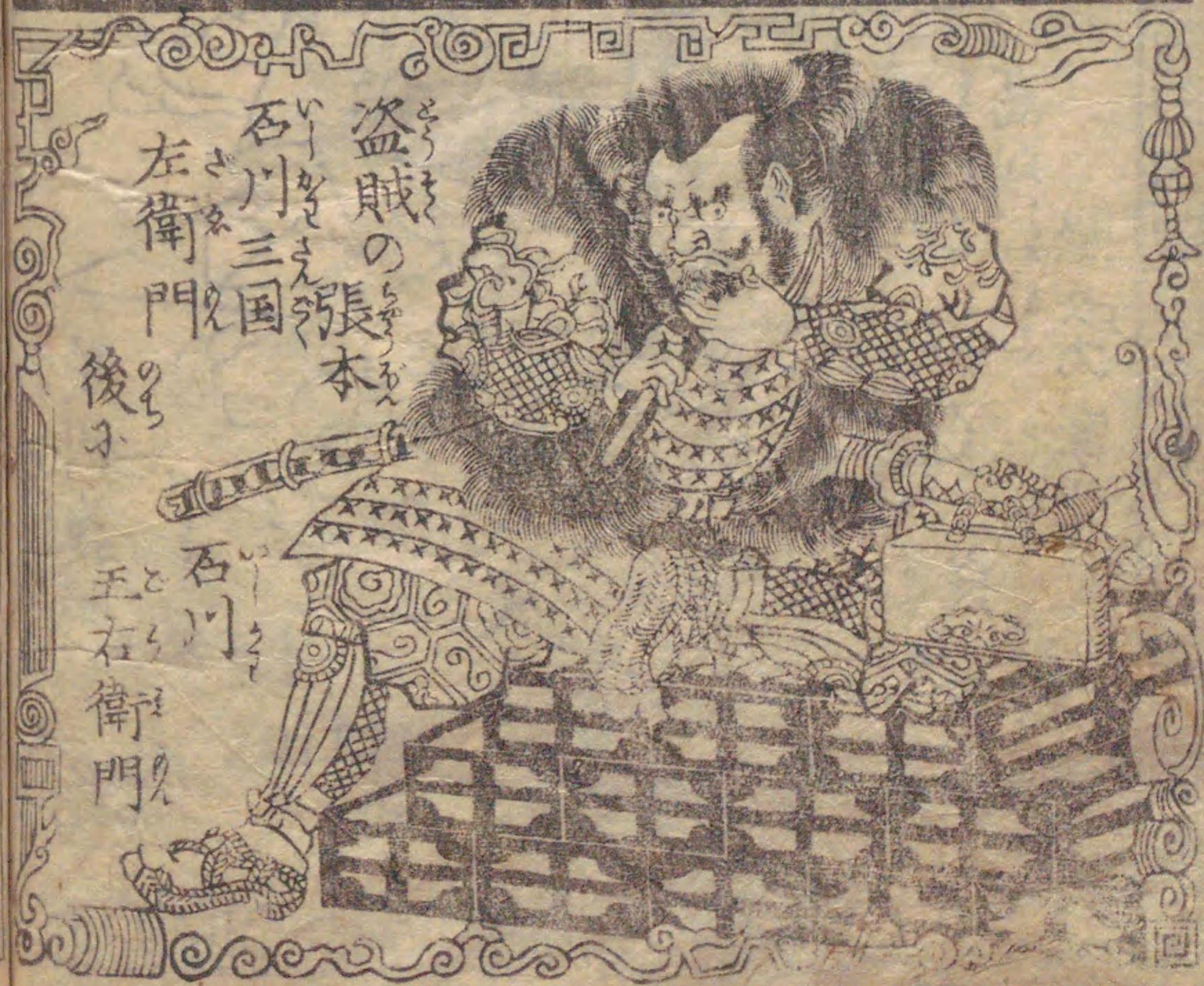
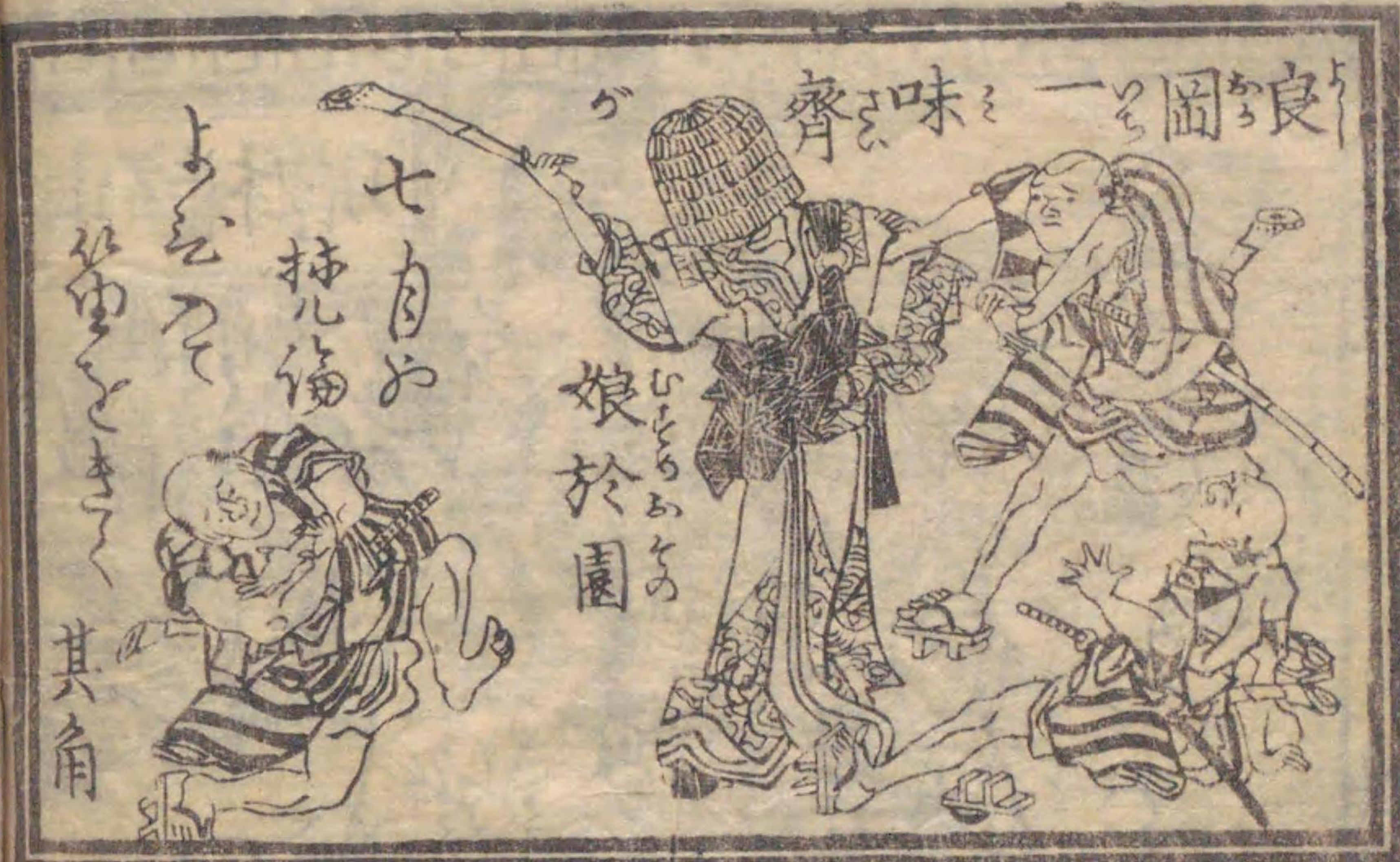
孝貞







家とこれ  
おととれ  
桃青  
暮とあり







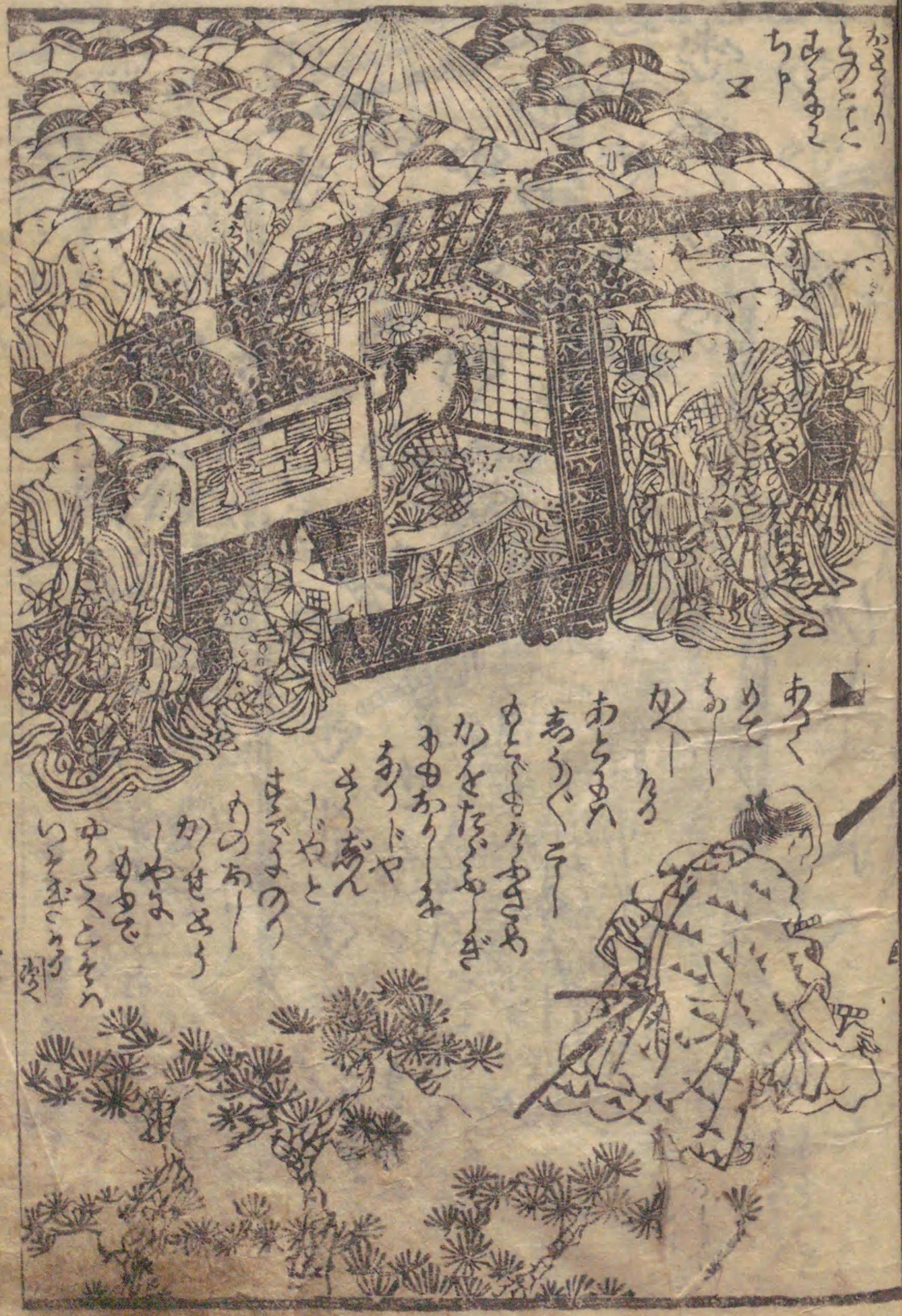




















孝貞

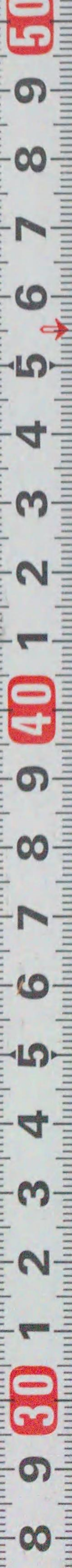




Handwritten text in a cursive script, likely a form of Japanese calligraphy, arranged in vertical columns on the left page.



Handwritten text in a cursive script, likely a form of Japanese calligraphy, arranged in vertical columns on the right page.







Handwritten Japanese text in a cursive style, located below the illustration on the left page.

Handwritten Japanese text in a cursive style, located at the top of the right page.



Small handwritten text or signature located to the right of the illustration on the right page.







Handwritten Japanese text in vertical columns, located above the central figure on the left page.



Handwritten Japanese text in vertical columns, located below the central figure on the left page.



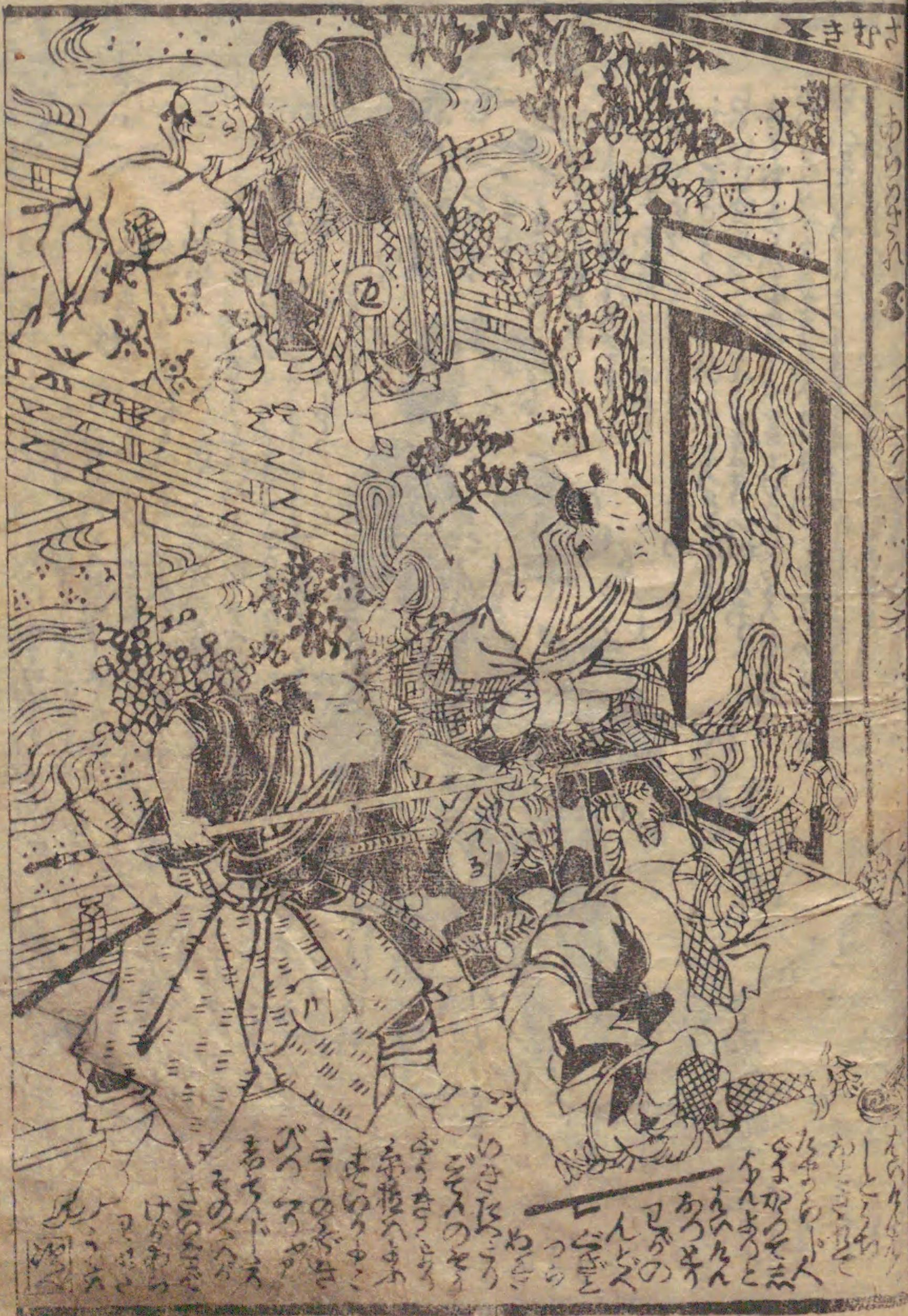
Handwritten Japanese text in vertical columns, located above the central figure on the right page.



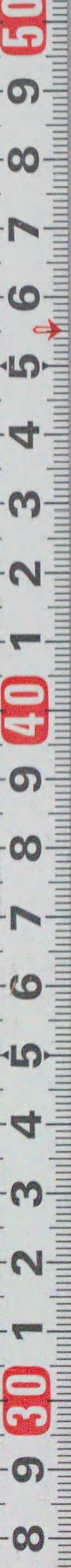
Handwritten Japanese text in vertical columns, located below the central figure on the right page.

















此の  
 松南  
 齊眉山



松南齊眉山作  
 勝川春英画



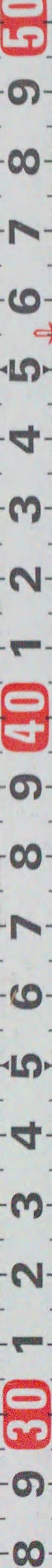


























卷之五



Vertical Japanese text on the left side of the illustration, likely a commentary or part of the story.



Vertical Japanese text on the top side of the illustration, likely a commentary or part of the story.

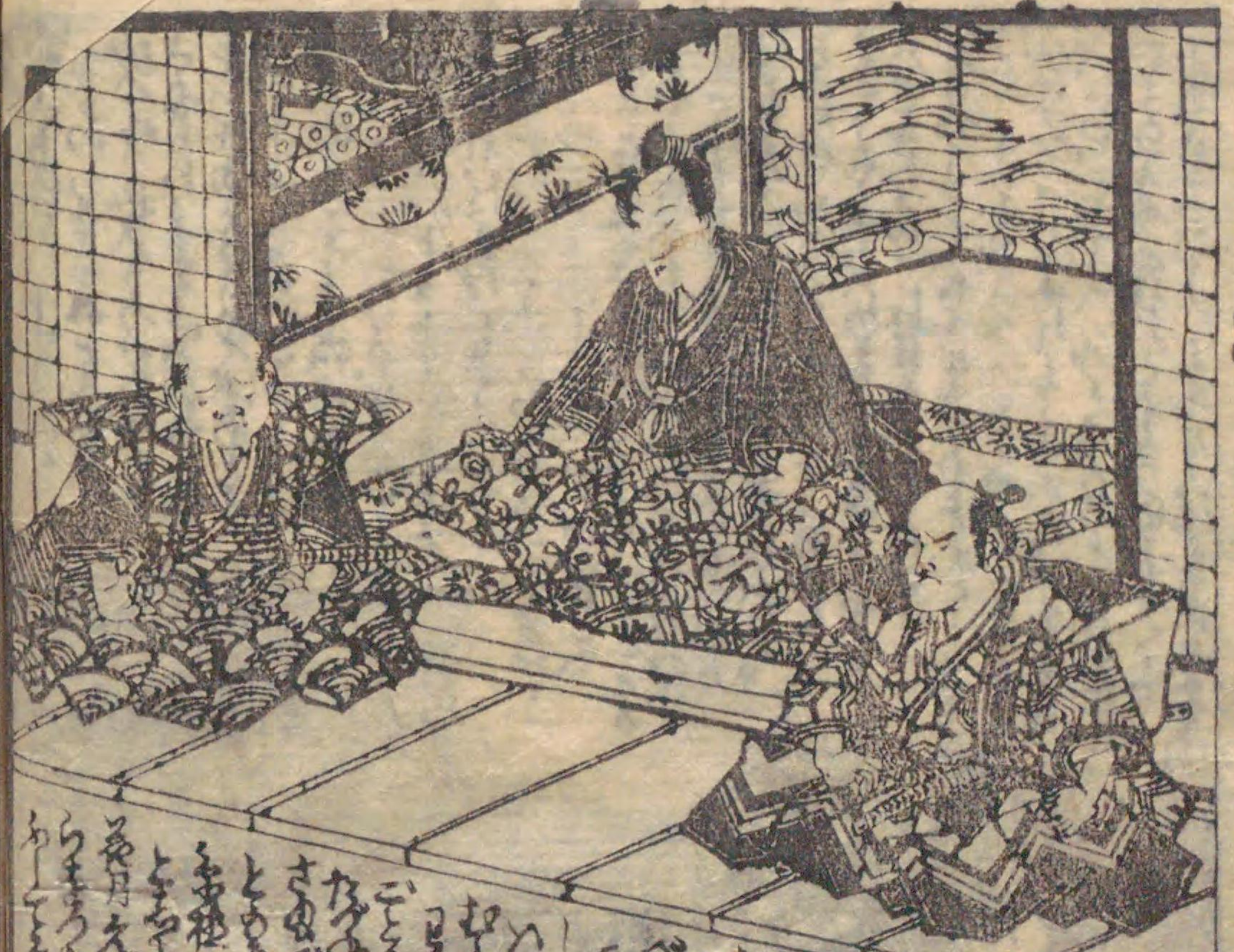
Vertical Japanese text on the bottom side of the illustration, likely a commentary or part of the story.











Handwritten Japanese text in vertical columns, including the characters 'Tōmei' and 'Kōmei'.

Handwritten Japanese text in vertical columns, continuing the narrative from the illustration.









Handwritten text in vertical columns at the top of the left page, likely serving as a title or introductory text for the scene below.



Handwritten text in vertical columns at the bottom of the left page, providing commentary or dialogue related to the illustration.

Handwritten text in vertical columns at the top of the right page, continuing the narrative or providing additional context.



Handwritten text in vertical columns at the bottom of the right page, concluding the scene or providing further commentary.































国立国会図書館 孝貞六助誓力働 前後編 207-743



ガラス使用

