









Classified Business - Professional Directory

Various advertisements including AUTO REPAIRS, STANDARD GARAGE, MOTOR-SMITHS, CARPENTER AND BUILDER, CARPENTER JOBBING, CARPET CLEANING, CEMENT WORK, CONTRACTORS & BUILDERS, DRAIN BOARDS, DYERS AND CLEANERS, FURNITURE, GLENDALE UPHOLSTERING CO., GARDENING, YARD WORK, etc.

ANNOUNCEMENTS

FOREST LAWN PARK, Grand View Memorial, PALACE GRAND BARBER SHOP, SIGN S, WATRIN-BAKER SIGN CO., PALACE GRAND BARBER SHOP, PALACE GRAND BARBER SHOP, PALACE GRAND BARBER SHOP.

MOTOR VEHICLES

FOR SALE—7 pass. Chandler; good condition; for quick sale \$300. 371 W. Broadway, Glendale. 1332-W. FOR SALE—Motor cycle, Indian Scout, '21, splendid condition reasonable, cash or terms. 800 S. Central Ave. Glendale. 3126.

FOR RENT

WANTED—Room with board by business woman in private family. Prefer North and West, close in. Address Box 424 Glendale News. Nurse will give room and board to invalids or convalescents. 1617 S. San Fernando Rd., Glendale 3209-W.

FOR RENT

UNFURN. APTS. & HOUSES FOR RENT—4 room apt., 1-2 block from car and bus. Phone Glen. 927-J. 134 So. Adams. FOR RENT—California bungalow, 3 rooms and bath. Close in. Glendale 1699.

BUSINESS INVESTMENTS

C. C. JULIAN'S Montrose Office 903 Montrose Ave. For accommodation of patrons convenient to this office. Call, phone or write H. E. Carter, authorized representative. Phone Glen. 2044-J-2, Montrose, Calif.

EXCHANGE

all bungalow; will be vacant Lot and only 6 to 8 o'clock. Grove Ave. FOR GLENDALE ROOMS and breakfasts. 116; beautiful view; want something 1356 East Colorado.

MOVIE ROMANCE GOES ON SHOALS

Chaplin Loses Negri's Love to Tennis Champion, Report Declares LOS ANGELES, July 28.—The engagement of Pola Negri, tragedienne actress, and Charlie Chaplin, king of film comedy, is definitely and absolutely at an end and William Tilden II, tennis champion, is reported to have supplanted the comedian in the actress' affections.

Miners and Operators Split, Strike Looms

ATLANTIC CITY, N. J., July 28.—A strike of hard coal miners throughout the country looked late yesterday when the anthracite wage conference of miners' representatives and operators broke up in disagreement.

Police Probe Origin of \$300,000 Blaze

LOS ANGELES, July 28.—Police and fire officials today launched an investigation of the fire that threatened an entire block, drove occupants from two apartment houses into the street in their night clothes early to day and did damage estimated at \$300,000 in South Alvarado street.

LOST

LOST—vicinity of Brand and Broadway leather auto key case, with 3 keys and owner's name, J. R. Coffman, Reward. Finder please call Glendale 2309 R-2.

STRAYED OR STOLEN

STRAYED OR STOLEN—Party who took little boy's tortoise rimmed glasses from Glendale swimming pool return same to manager, Patterson Street Swimming Pool.

WANTED MISCELLANEOUS

WANTED—Working man wants 2 used suits, size 37. Cheap. Box 431 Glendale News.

INSTRUCTIONS

Those interested in the study of UNITY TRUTH teachings and the demonstration of mental therapeutics are asked to call on Mrs. Horner, 223 1/2 E. Maple Ave. Angeles.

FOR EXCHANGE

FOR EXCHANGE—Diamonds for equity in vacant or improved property or will assume. Call Glen. 467-W.

WANTED

WANTED—Woman or girl for housework. Apply 336 W. Riverside Drive. WANTED—Reliable house-keeper; two adults and two children, 5 and 7 years; some cooking; cheerful home. Call between 8:30 and 10 a. m. or 6:30 and 9 p. m. Glendale, 1317-W, 1304 North Maryland, Ave.

SITUATIONS WANTED

YOUNG MAN wants job as automobile mechanic, or barber, or painter. Box No. 435, Glendale News. TIRE SPECIALIST wants position at once. Box 434, Glendale News.

MALE HELP WANTED

WANTED—Janitor for central building (111 East Broadway). Apply F. B. Walker, 710 East Harvard St., Glendale 84-W.

USED PIANO BARGAINS

STEGER UPRIGHT—Bungalow size. KEANICH & BACH—Upright perfect condition. KIMBALL—Upright—Small size, mahogany. \$10 DOWN, BALANCE LIKE RENT.

MOTOR VEHICLES

NASH SPORT, 1921, \$800; just overhauled; new rubber. 727 South Louise St., Glendale 247. FOR SALE—Sacrifice; 1923 Ford coupe, nearly new, many extras. 115 S. Orange, Apt. No. 3.

LIVESTOCK

Two good Toggenburg milk goats for sale, very reasonable; both fresh. Inquire 1055 Justin Ave., Glendale. HOUSEHOLD GOODS FOR SALE—Dresser, library table, two mattresses, four windows, two pair crutches. Over Rigus Drug Store, corner Colorado and Adams.

MOTOR VEHICLES

1921 OAKLAND SEDAN Looks new, in splendid condition, \$950, easy terms. Owner, Glendale 2168-R. FOR SALE—Six cylinder roadster, 1920, or trade for Ford Sedan, \$325. Glendale 467-W.

WANTED TO RENT

WANTED TO RENT—We have cash for used furniture. Glendale 2180-W. NASH SPORT, 1921, \$800; just overhauled; new rubber. 727 South Louise St., Glendale 247.

FURNISHED ROOMS

FOR RENT—Nicely furnished upstairs room with shower. Fine location. 614 N. Brand. FOR RENT—Front room, furnished, separate entrance; garage if desired. 901 E. Lomita Ave., Gl. 1857-J.

FURNISHED APTS. & HOUSES

FOR RENT—New one-room furnished house with bath and kitchenette; silver, linen, gas and light furnished. 212 S. Cedar, Phone Glen. 1698-J. FOR RENT—2 furnished rooms for light housekeeping, private bath, separate entrance from porch; gas, water and light furnished. 1105 Melrose Ave., phone Glendale 2869-W.

MONEY TO LEND

MONEY TO LEND—From \$2000 to \$5000 on improved Glendale property, 7% to 3 years. First mortgages. Glen. 663-J. Money to Lend on First Mortgages 5 1/2 to 6 PER CENT I have unlimited insurance funds available for loans for homes, flats, apts., business properties and bungalow courts in Glendale.



SPORTS

Dempsey To Fight Firpo, Sept. 14

FIGHTERS SIGNED BY TEX RICKARD

Bout to Be Staged at Polo Grounds Will Go to 15-Round Decision

NEW YORK, July 28.—Jack Dempsey will defend his world heavyweight championship title against Luis Angel Firpo, of the Argentine, on Friday night, September 14, Tex Rickard, promoter of the bout, definitely announced this afternoon.

Rickard said he expected Dempsey, now at Los Angeles, Cal., to start east at once and go into immediate training at Saratoga Springs, N. Y. Firpo is now on a tour in the middle west.

Special bleachers will be constructed at the Polo grounds for the battle, Rickard said. They will be erected at the rear of the ringside seats, so constructed as to give the place a bowl-like effect.

YESTERDAY'S RESULTS

Table with 4 columns: Team, W, L, Pct. Includes San Francisco, Sacramento, Portland, Los Angeles, Salt Lake, Vernon, Seattle, Oakland.

NATIONAL LEAGUE

Table with 4 columns: Team, W, L, Pct. Includes New York, Cincinnati, Pittsburgh, Chicago, Brooklyn, Philadelphia, St. Louis, Boston.

AMERICAN LEAGUE

Table with 4 columns: Team, W, L, Pct. Includes New York, Cleveland, St. Louis, Detroit, Chicago, Philadelphia, Washington, Boston.

Home Runs in Majors

Table with 2 columns: Player, Runs. Includes Bottomley, Ruth, Harris, Walker, American.

Helen Willis to Again Meet Molla Mallory

RYE, N. Y., July 28.—Miss Helen Willis, 17-year-old California wonder, will make another attempt to defeat Mrs. Molla Mallory, national champion, in the final round of the New York state championship for women this afternoon.

FORDS WIN FROM COKER & TAYLOR

Roder Is High Man with 613 Pins Knocked Down in League Game

Table showing bowling scores for Smith's Fords and Coker & Taylor. Columns: Player, Pins, Strikes.

Jones and Shade Put Up Whirlwind Fight

BOSTON, July 28.—Fight fans today class the ten-round bout between Jimmy Jones of Youngstown, Ohio, and Dave Shade of California, last night, as one of the best ever seen in this city.

California Net Stars To Battle for Title

NEW YORK, July 28.—California was assured of victory in the Metropolitan tennis championship when the two finalists who competed for the title this afternoon were players from that state.

TAGGING ALL BASES

The Yanks, Herbie Pennock back on the mound, made it four in a row over the Athletics by winning, 7 to 3, Babe Ruth knocking out his twenty-fourth homer.

Autobiles Damaged Result of Collision

Noon today was the time chosen by two automobiles of popular make to try the experiment of attempting to occupy the same space at the same time.

See Demonstration of Rickenbacker Brakes

A. M. Shoffner, local distributor of the Rickenbacker automobiles and F. R. Harman, his sales manager, 107 East Colorado, were the guests of the Rickenbacker organization in Los Angeles yesterday, when all of the Southern California dealers were called in for a demonstration of the new four wheel brakes that are being installed on the new models.

K. C. Ball Players to Meet Murphy's Nine

The K. C. ball team of Glendale and the Gene Murphy "Knock 'em dead" team from Los Angeles will clash tomorrow afternoon on the Merchants' grounds at Park avenue and San Fernando road.

Chick Evans on Way To Golf Championship

MAYFIELD COUNTRY CLUB, CLEVELAND, Ohio, July 28.—Chick Evans, veteran of many a championship golf tournament, holder of the western amateur title for seven years, since he first won it in 1909, was well on his way to his eighth championship of the Western Golf association at the end of the morning round here today.

POLICE DRAW UP TRAFFIC PLANS

President's Route Will Be Guarded by City and County Officers

Final plans for President Warren G. Harding's tour through Southern California Friday, August 3, were perfected yesterday afternoon in Los Angeles at a meeting attended by about forty law enforcement officers of Los Angeles and Los Angeles county.

ARTIST SECTION OF CLUB FORMED

Another department of the Glendale Music Club organizing for the coming year is the Artist Section with Miss Gertrude Cleophas, talented pianist, as curator.

CLUBWOMEN WILL GREET PRESIDENT

Members Recall Interest of Mrs. Harding in Plans for Club Benefit

AT SEQUOIA PARK

Rev. and Mrs. Louis Tinning of 220 North Belmont street and daughter, Teresa, are enjoying a cool and pleasant vacation at Sequoia National park, according to a postal received at 121 South Cedar street by Rev. and Mrs. W. E. Edmonds.

RECOVERS AUTO.

The automobile which was stolen from J. LeBerthou of 317 East Lomita avenue Thursday night was found a block from his home yesterday afternoon.

METHODISTS WIN FROM FORD TEAM

Flivvers Drop Twilight Game to Wesley's Followers by Score of 24-10

The Methodist-Episcopal church nine won over Smith's Fords last night, in the Twilight League baseball series, by the score of 24 to 10. The game, as usual, was played on the Glendale Union High school grounds.

SCOUTS TO HEAR HARDING SPEECH

Knights Templar Arrange for Troops to Participate in Bowl Ceremony

Boy Scouts of the Verdugo Hills District will have "ring-side" seats August 2nd, at the Hollywood Bowl when they greet Warren G. Harding, President of the United States and Honorary President of the Boy Scouts of America, according to a statement made this morning by A. R. Eastman, president of the local Scout Council.

Civil War Veterans Hold Annual Outing

(Continued from page 1) buried in the Rev. A. V. Kendrick of Long Beach. Rev. C. R. Norton, chaplain of the local veterans, was present, but made no address, by reason of the fact that he had the day before attended, with his lifelong friend and comrade, Dr. Kendrick, the final services for his brother.

Golden Wedding Day of Mr. and Mrs. Shaw

(Continued from page 1) Their only child and son, Hartley Shaw of 212 West Park avenue, becomes Judge Shaw today, through his appointment to the superior bench. There are three grandchildren, Dorothy, Evelyn, and Lucien, Jr., named for his grandfather.

PORTABLE CONVEYOR

Operated by an electric motor, a portable belt conveyor has been mounted by its inventor on wheels that enable it to be moved on a railroad track.

Kiwanians Hear Appeal To Better Citizenship; Vote At Elections, Is Speaker's Plea

THAT the average American citizen must be more keenly alive to the responsibilities of genuine citizenship—that he must have a better appreciation of the duty imposed by the ballot box and that he must live up to a more rigid set of specifications for citizenship if he would see American ideals of government preserved and handed down to posterity, were the facts upon which H. J. Ferguson of Tama, Iowa, yesterday addressed the Kiwanis Club of Glendale at its regular Friday luncheon.

EXCHANGE CLUBS IN CELEBRATION

Glendale Members Share in Dinner and Program at Monroe Exposition

Exchange club night was celebrated last night at the Los Angeles Moving Picture Exposition. The Los Angeles, Long Beach and Glendale Exchange clubs were represented by delegations totaling several hundred.

Gasoline May Drop To 11 Cents in Fight

(Continued from page 1) day said that one independent service station in the harbor district is already selling gasoline at 11 cents a gallon, and is reported buying the fuel at 9 cents a gallon. Many stations in Los Angeles are selling gasoline for 15 and 16 cents a gallon.

Civil War Veterans Hold Annual Outing

(Continued from page 1) Kendrick of Long Beach. Rev. C. R. Norton, chaplain of the local veterans, was present, but made no address, by reason of the fact that he had the day before attended, with his lifelong friend and comrade, Dr. Kendrick, the final services for his brother.

Golden Wedding Day of Mr. and Mrs. Shaw

(Continued from page 1) Their only child and son, Hartley Shaw of 212 West Park avenue, becomes Judge Shaw today, through his appointment to the superior bench. There are three grandchildren, Dorothy, Evelyn, and Lucien, Jr., named for his grandfather.

PORTABLE CONVEYOR

Operated by an electric motor, a portable belt conveyor has been mounted by its inventor on wheels that enable it to be moved on a railroad track.

MONDAY'S BARGAIN DAY!

There are quite a few pieces of furniture on our floors that have been there long enough. So we have decided to make Special Bargains of them on Monday, and if price will move them, will replace the spece with newer goods.

GLENDALE FURNITURE STORE

Flagg & Walker, Proprietors 606-608 East Broadway Glendale, Calif.

DR. ROY V. HOGUE, Dentist

Announces the Association of Dr. Wm. E. Jenkins of Portland, Ore., in his Office and Practice

THEATRES

THE GLENDALE "Shootin' for Love," with Hoot Gibson in the featured role, is the Universal film showing today at the Glendale theatre.

THE GATEWAY "Vengeance of the Deep" show at the Gateway theatre the last times today.

Cowgirl Upsets Plan For Gouraud's Welcome

YOSEMITE, Cal., July 28.—A cowgirl yesterday upset elaborate government preparations to welcome General Henri Gouraud, "hero of the Champagne," to Yosemite valley.

GASOLINE 16c at EVARTS' Central Supply Station IT IS NOT NECESSARY TO HAVE A FREE COUPON BOOK TO BUY GASO. LINE AT 16c EVERYONE TREATED THE SAME NO BOOKS NO CARDS WILL STILL GO YOU 1/2c BETTER 10 GALLONS, \$1.55 THIS GASOLINE IS HIGH GRADE HIGH GRADE EASTERN OILS AS WELL AS CALIFORNIA OILS AT THE RIGHT PRICES Central Supply Station F. H. EVARTS, Prop. 228 West Broadway GASOLINE 16c

# AUTOMOBILE SECTION

PART TWO

GLENDALE, LOS ANGELES COUNTY, CALIFORNIA, SATURDAY, JULY 28, 1923

PAGES 1 TO 6

## New City Parking Ordinance Under Discussion

### TALKS ABOUT CHANGES IN AUTO LAW

Trade Association Officer Gives Outline of New Requirements

**HIGHLIGHTS** in the new California Vehicle Act recently announced members of the Automobile Trade Association of the San Gabriel valley in a comprehensive bulletin issued by John E. Harriott, secretary and manager of the association, and includes a number of important items which will be of interest to autoists and motor owners of Glendale.

One of the most important features of the new act is that evidence obtained by means of speed traps and testimonies presented by officers patrolling the highways in plain clothes will be admitted. Speed limits are classified as follows:

Fifteen miles an hour on grade crossings, steam, electric or street trolley.

Fifteen miles an hour at intersection of highways.

Fifteen miles an hour around curves or corners.

Fifteen miles an hour when passing a school while persons are playing or entering the school grounds.

Fifteen miles an hour in business district.

Twenty miles an hour in residence district.

Thirty-five miles an hour under other conditions.

The board of supervisors of any county, the city council, board of trustees or other legislative body of a city or town must place signs defining the above districts. No territory shall be deemed to be within a business or residence district unless signposted.

**Gasoline Tax Before Long**

A gasoline tax of 2 cents per gallon will be effective for all motor vehicles, beginning September 30, 1923.

Effective January 1, 1924, a flat registration fee of \$10 for all vehicles will be charged the state and in addition there will be a 2-cent gasoline tax and a light tax on commercial vehicles, including trailers and semi-trailers.

The fee for electric passenger vehicles is \$10; commercial electrically propelled vehicles used to transport passengers or property for hire, \$50. Fees are double not paid when due and become lien on the vehicle, which is subject to seizure and sale.

A new section to the civil code will be added to the registration certificate.

The person named as legal owner in the registration certificate.

(Continued on page 4)

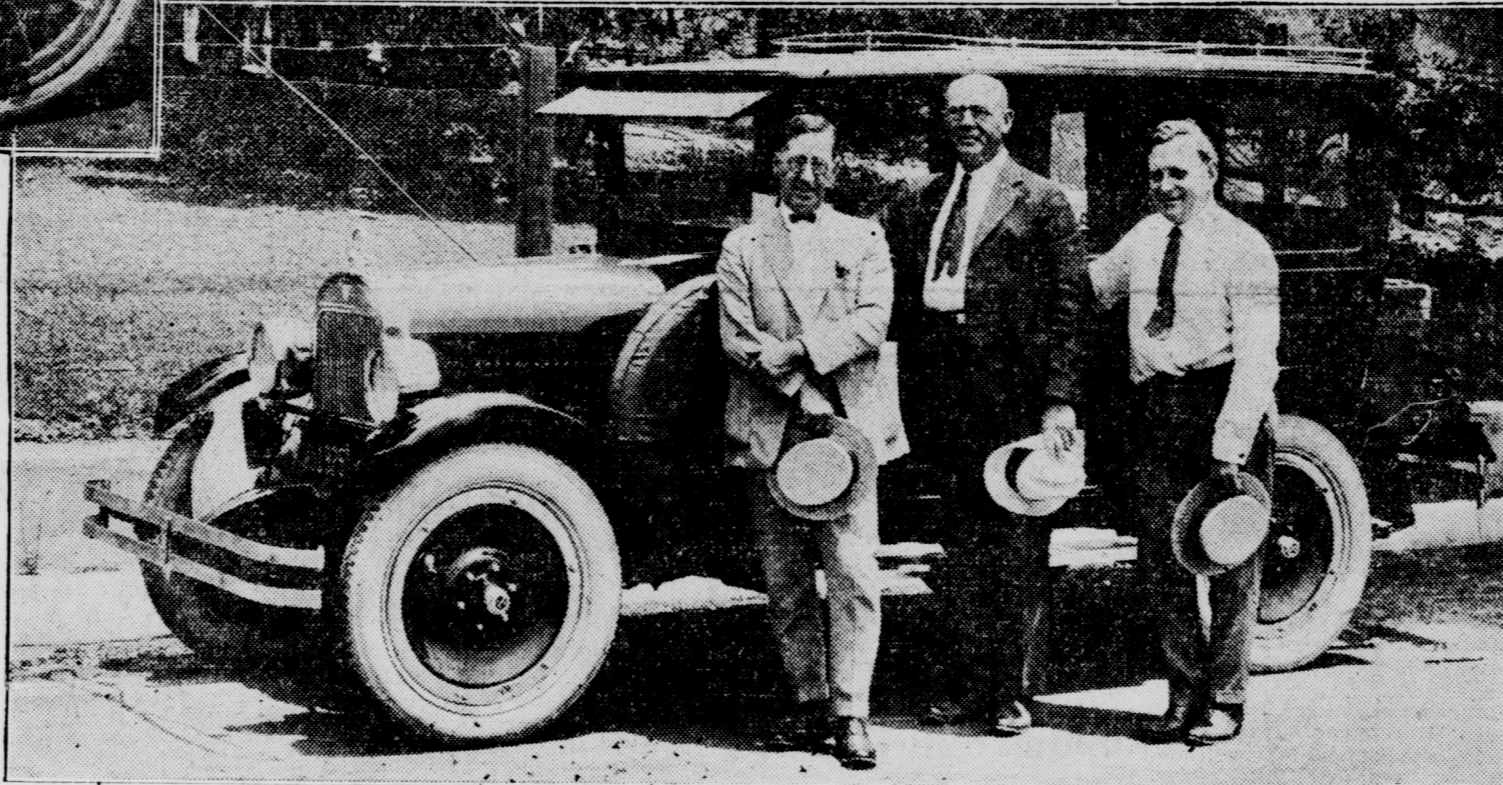
### MAXWELL OF EARLY VINTAGE ROUSES OLD MEMORIES IN GLENDALÉ PIONEERS



#### The Pictures

**THE** picture on the left shows Mayor Spencer Robinson and Fred Deal, manager of the Pacific Telephone & Telegraph company, sitting in a Maxwell of the 1906 crop, a replica of Deal's first car that was sold to him by Mayor Robinson, who was the first agent for the Maxwell car in Glendale. The veteran of 1906, with 133,121 miles to its credit, is still going strong.

Below, Fred Deal, Mayor Robinson and Lyman P. Clark, Maxwell distributor, park themselves in front of Fred Deal's latest purchase, a five-passenger Maxwell traveler sedan, the last word in automobile refinement, as Deal completes the cycle by owning the first and the last Maxwells in Glendale.



### Build Up Shank When Removing Broken Tap

Usually, when a tap breaks, it is difficult to remove, as it breaks off flush with the surface of the work, or it splinters in the hole, causing it to wedge. In the first case, a good method of removal is to build up the broken shank of the tap to above the surface of the work, using a welding torch and filler rod. A small sized welding tip must be used, and care must be taken not to deposit any metal between the tap and the hole. The work must be done as quickly as possible so that the tap will not be heated sufficiently to cause the threads to fuse to the work. After the shank of the tap has been built up sufficiently, it may be turned with a pair of pliers or pipe wrench.

If the tap is splintered in the hole, some nitric acid should be poured in the hole and allowed to stand for a few hours. The acid will eat away the smaller particles of metal, and the tap may then be removed by working it back and forth with a pair of tweezers.

### OVERCHARGED BATTERY

This is the open season for battery troubles. With darkness falling at a later hour these evenings, the necessity for burning headlights is cut down, and danger of overcharging is increased.

### Spencer Robinson, First Maxwell Agent in City, Recalls Days When He Made Sale to Fred Deal, Telephone Magnate

By RALPH A. LYND  
Of The Evening News Staff

**M**EMORIES of the olden days awoke and stirred in the breasts of Mayor Spencer Robinson and Fred Deal, manager of the Glendale branch of the Pacific Telephone & Telegraph Company, this week, when a Maxwell car of the vintage of 1906 materialized out of the recesses where it had remained hidden from their ken and landed in the showrooms of Lyman P. Clark, Maxwell agent, at 124 West Colorado street. What caused these two to take such a keen interest in Clark's find was that the old relic was the dead spirit and image of the first car that Fred Deal had ever owned, and it was sold to him by Spencer Robinson, who was then the first agent for the Maxwell cars in Glendale, and the latter's account of the way he sold the car to Deal is a classic, fully up to the standard of the Robinson technique in story-telling.

Spencer Robinson had been appointed agent for the Maxwell in Glendale, but he didn't know the first thing about driving a car in those days. However, he took Fred Deal into Los Angeles to see the two-cylinder whirlwind that was even then going to revolutionize transportation. Deal looked the car over and said that, while he wasn't keen on getting one of the pesky things, he would take a chance just to help his friend make his first sale, and so the deal was made.

The windshield and the top of the old car were handed over to the agent and the purchaser, wrapped in paper, and they had to figure out some way of putting them on the car. When this difficulty had been surmounted, the next thing was to drive the car back to Glendale. A trifle like that wasn't big enough to scare the two men, one of whom had just sold and the other of whom had just bought his first car, so Spencer Robinson, after a few sketchy suggestions from the mechanics who pretended to know all about Maxwells, climbed aboard, dragged Fred Deal up beside him, commended their souls to the care of Heaven, and started for Glendale. They got here, but Fred Deal claims that it was his steady praying that got them here alive, rather than the driving ability of his companion, who

needed most of the road to maneuver in, and who took it, too.

The first Maxwell sold in Glendale did steady duty for Fred Deal until 1916, but the old model that Lyman P. Clark has now on display has been going even longer than that, being in active service up till the day when he traded it in on a new car two weeks ago and piling up a mileage of 133,121, which, for a two-cylinder car, is regarded as a miracle in these days of four, six and eight cylinder cars.

Of course, the old car had to be compared with the latest designs in Maxwells, and, with Mayor Spencer Robinson egging him on, Fred Deal completed the cycle by buying the newest Maxwell on the market, a five-passenger sedan that is the last word in motoring comfort and refinement, and as soon as the new car can be delivered, Mr. Deal will forget his official troubles and revel in his new automobile.

Lyman P. Clark, who has been selling Maxwells in Glendale for the last twelve years, and who has built the business up to its present startling proportions when orders are coming in faster than they can be delivered, is going to keep the veteran two-cylinder automobile for a contrast with the present models that the company is turning out.

### SMALL CITIES POLICE CHIEF HELPED BY INDUSTRY GIVES VIEWS TO PUBLIC

Automobile Trade Big Aid To Community, Says Motor Journal

Reduction in Time Limit Gets Support; Suggests Some Auto Don'ts

By ARTHUR SHERBORNE  
Of The Evening News Staff

**E**XECUTIVES in the automobile industry who sell nationally are now planning more intensive sales effort in small towns where sixty per cent of all retail sales are made.

Today there are hundreds of concerns rated as national distributors who are in reality only securing localized sales, says a report just issued by the Automobile Trade Journal.

Great trading balances may be maintained in the cities; but much of the wealth on which purchases are made lies outside the sphere of city influence. It is in this outlying market that the next big sales campaign will be staged.

Sales in 1923 of new motor vehicles, parts and supplies, and service labor will be nearly \$6,000,000,000, a sum greater by 50 per cent than the value of all gold and silver coin within the nation's borders. This total will be made up as follows:

Motor vehicles.....	\$2,091,000,000
Replacement parts, accessories, and service supplies.....	885,000,000
Operating supplies.....	2,102,000,000
Service labor.....	900,000,000
Total.....	\$5,978,000,000

If we except essential food products, the automobile industry in all its ramifications can well be considered America's greatest market.

#### Population in Small Towns

About 15 per cent of the people in the United States live in the twelve cities having over 500,000 inhabitants each. Cities with populations ranging from 100,000 to 500,000, collectively, account for 10 1/2 per cent. Approximately 16.4 per cent of the population is in towns of 10,000 to 100,000. About 57.6 per cent, or nearly two-thirds of the total, live in rural districts or small towns under 10,000 population.

Considering the distribution of population only, therefore, it appears that the balance of sales possibilities is substantially in favor of small towns.

(Continued on page 4)

more automobile drivers would pay attention to traffic ordinances and speed regulations, there would be fewer local arrests and fewer traffic cases before Police Judge F. H. Lowe.

Col. J. D. Fraser, chief of police, authorized this assertion recently in an interview on the traffic situation.

"The fact that so many traffic violators are being given tags does not seem to decrease the number of violators in the least," he remarked.

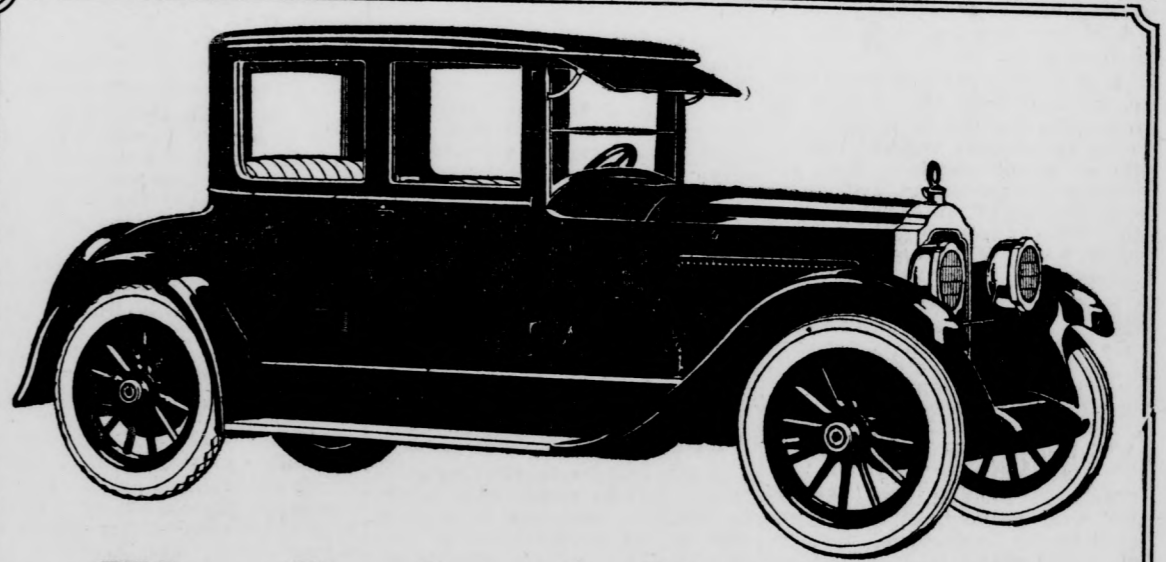
"These violators are very noticeable to patrolmen on foot, who are unable to apprehend them, and also from the many complaints from citizens. Motorcycle officers are urged to arrest all violators that it is possible to pick up. We will continue this attitude not only as a matter of law enforcement but also as a means of protecting life, preventing personal injuries and damage to property."

**Receive Complaints**  
The City Council is now contemplating a change in the parking ordinance and Thursday night received a report from Col. Fraser in regard to it.

"My recommendation in so far as the parking ordinance is concerned," he remarked, "is that on account of the great number of complaints from business men that their customers are unable to get to their stores with the present ordinance of three hours, that the time limit be reduced to one hour."

The present ordinance covers Brand boulevard between Colorado street and Wilson avenue and Broadway between Central avenue and Everett St. The Council is in favor of having the northern boundary extended to California avenue and the eastern boundary moved westward to Louise street.

In regard to the manner of (Continued on page 2)



### The Packard Single Six

offers the ideal combination of superfine motoring, real economy of investment and operation, and that pride of ownership which only a Packard can give.

In the Single Six, Packard manufacturing leadership has brought possession of America's foremost fine car within reach of those who wisely make motoring economy their first consideration.

Before you decide to purchase within one thousand dollars of the Packard price, it will pay you to learn on what a reasonable basis you can enjoy a Single-Six.

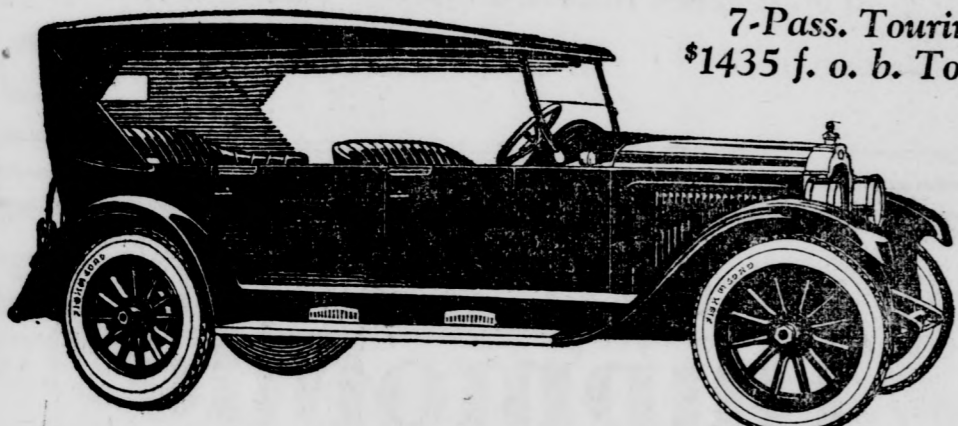
CALL FOR A DEMONSTRATION AT YOUR CONVENIENCE

DIXIE-Packard-COMPANY

510 E. Broadway

Phone Glen. 1077

## WILLYS KNIGHT



7-Pass. Touring  
\$1435 f. o. b. Toledo

### Steers With a Touch

With deep-cushioned, roomy, comfortable capacity for all, the Willys-Knight 7-passenger Touring Car handles as nimbly as a polo pony. The Willys-Knight is the only car in America with eight Timken bearings in the front axle, and is the easiest car to steer. We know of no Willys-Knight engine that has worn out.

SMITH-SLOAN, Inc.

228 South Brand Blvd.

Phone Glen. 1320

DAMAGED

\$1235, f. o. b. Detroit  
Disc Steel Wheels Included



**Striking Beauty  
Identifies Chalmers Six**

The beauty of the improved Chalmers Six, in both line and finish, readily identifies it wherever it is seen.

Complete appreciation of how fine a car the Chalmers Six really is, is only possible, however, when you drive the car yourself. We will gladly place a car at your disposal.

Chalmers Six Prices  
5-Passenger Touring, \$1235 Roadster, \$1185  
7-Passenger Touring, \$1345 Sedan Coach, \$1565  
7-Passenger Sedan, \$2195  
Price f. o. b. Detroit. Expense tax to be added.

**Glendale Motor Car Co.**  
MAXWELL AND CHALMERS  
Telephone Glen. 2430  
124 W. Colorado St., Glendale, Cal.

*The*  
**CHALMERS  
SIX**



**The Ansted Engine  
Was Originated for the Lexington Car**

It was designed with the object of providing greater power and economy, wider speed range, smoother and quieter operation, and longer life than is obtained in the conventional automobile motor offered at the present time.

Make up your mind right now that your next car will be a Lexington.

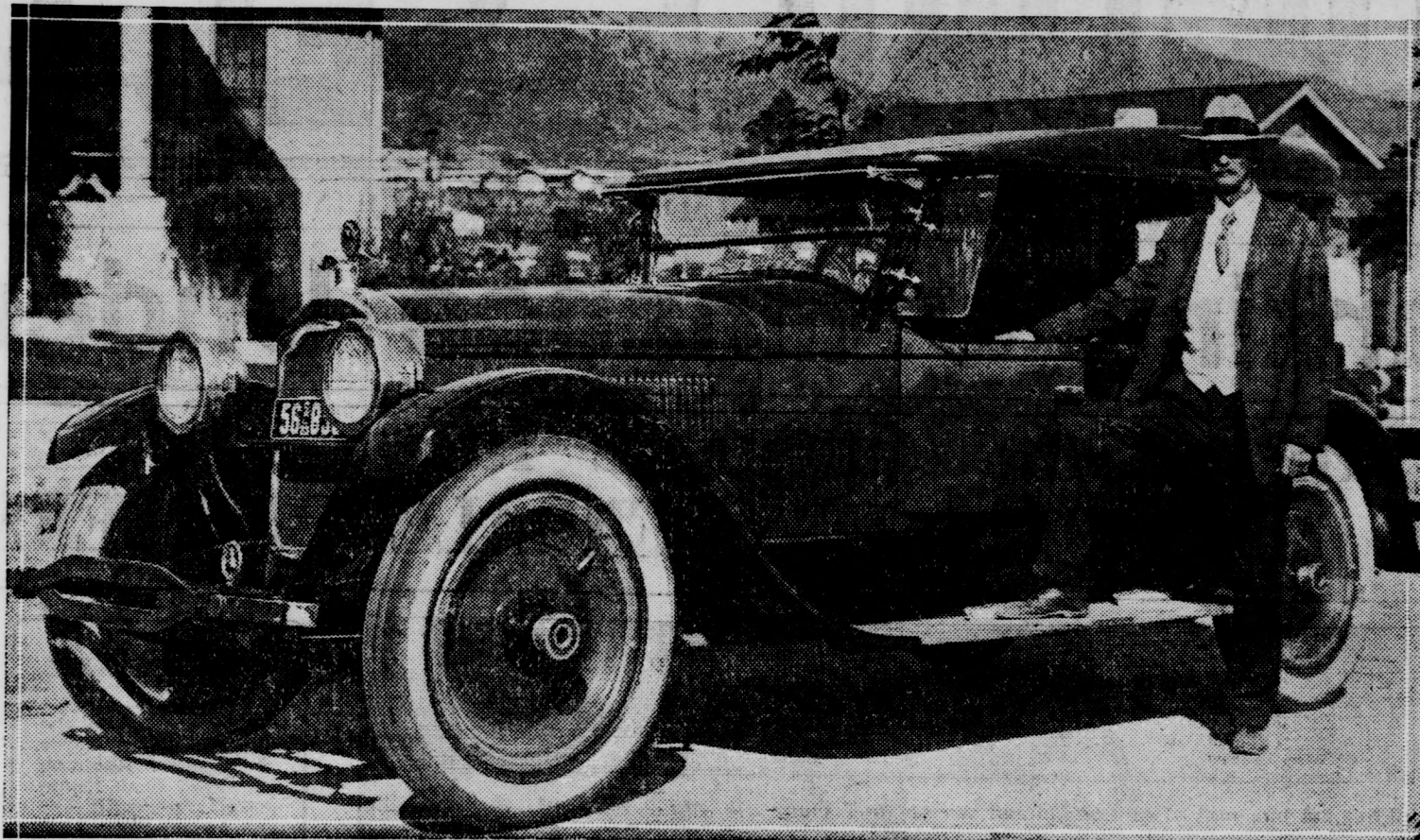
Ask for Demonstration

**FRED S. HILL**

124 South Orange Street

Phone Glendale 1954 Glendale, Calif.

**PACKARD BRINGS REAL MOTORING JOY**



A. W. Maxwell, Burbank capitalist, says his Packard Single Six Sport Touring car has opened up to him and his family a new wonderland of Southern California beauty.

**KNOW AUTO LAW,  
URGES OFFICIAL**

Chief of Police J. D. Fraser  
Makes Suggestions to  
Automobile Public

(Continued from page 1)  
parking. Col. Fraser made the following recommendation: "That parking on Brand boulevard be continued as it is now at an angle to the sidewalk and that parking on all other streets be parallel with the curb. Other streets being narrower than Brand boulevard makes it difficult for anyone driving through when cars are parked head in to the sidewalk."

**Fear of Accidents**  
The principal street section which would be affected by this regulation would be Broadway between Brand boulevard and Central avenue. Norton P. Buck of 100 West Broadway called attention to the likelihood of accidents under the present system of parking particularly during the passage through the street of fire apparatus.

One of the most troublesome violations of ordinance at the present time, in the opinion of Col. Fraser, is double parking on Brand boulevard. He called attention to the fact that automobiles frequently stop outside the automobiles regularly parked and remain in the center of the street while their drivers or passengers go into stores on errands. He added that the police department was starting a drive against this practice—regardless of whether or not anyone is in the automobile at the time.

Another ordinance, which the police department intends to enforce to the fullest extent, is that prohibiting trucks and heavy traffic on newly-made streets. The subject was brought up last week at the City Council meeting through a communication from Rudolph Streit of 346 Pioneer drive, president of the West Glendale Improvement association.

**In Bright Red Dress**  
In order that motorists, who now anchor their automobiles to fire hydrants, may not plead their invisibility in the future, all fire hydrants and curbs adjoining them have been painted a fiery red by the street department. Although parking within fifteen feet of a fire hydrant is prohibited, Col. Fraser remarked that such action might be taken when the driver remained at the wheel so that he could move his machine out of the way in case of the approach of fire apparatus.

**LUBRICATES SPRINGS**  
A new tool for lubricating automobile springs resembles a hatchet, lubricant contained in a reservoir in the handle blowing out openings in the blade after insertion between spring leaves.

Savings amounting to \$10,000,000 or more each year have resulted from tests of automobile brake linings conducted by the Bureau of Standards, in Washington, D. C.

**FEW CHANGES IN  
NEW STUDEBAKER**

Engineers Adhere to Proven  
Principles in Design of  
1924 Models

The new line of 1924 model Studebaker cars, just announced, offers no radical changes, according to Robert C. Conover, sales manager for the Packer Automobile Company, 245 South Brand boulevard, local distributors for the Studebaker line.

"The new models do contain, however, a number of refinements and improvements," Mr. Conover says, "tending to make these popular cars even more appealing to the public."  
"The 1924 Big Six carries disc wheels and front and rear bumpers as standard equipment, and an extra wheel, complete with cord tire, tube and tire carrier, is provided on each model of the series, two being provided on the speedster and sedan.

"Many other refinements have been added to the Big Sixes, and the Special Six and Light Six models have been beautified in many details that add inestimably to the refinements of the entire Studebaker line. In addition to these refinements that add to the beauty of the cars, the seventy-year reputation for Studebaker merit is embodied in every car in the entire series, and that means that the motorist who buys a Studebaker is getting a car that is built throughout and that has been built with only one end in view, to give perfect satisfaction to its owner."

**CROSS COUNTRY  
EXPENSES LIGHT**

Sixty-seven Cents in Repairs, 27 Miles Per Gallon From East

C. E. Gable, who has arrived from Lansing, Mich., with his family in a 1923 Chevrolet touring car, reports an average of twenty-seven miles to the gallon of gasoline and 800 miles to the quart of oil, for the entire trip.

He states that they drove from Flagstaff, Ariz., to Victorville, Calif., without a stop and didn't have to add a drop of water in the radiator the entire run across the desert.

"We left Lansing on June 25 and arrived in Glendale July 23," says Mr. Gable, "stopping en route at Spirit Lake, Iowa, for two weeks. Our entire repair bill amounted to 67 cents."

The present car is Mr. Gable's second Chevrolet. He states that he intends to settle in California and sell Chevrolets with D. Haskins, branch dealer of C. L. Smith, at 1321 South San Fernando road.

Police in Berlin, Germany, direct traffic with tiny trumpets instead of whistles.

"Don't park double on any street in the city of Glendale. By doing so you discommode hundreds of people to save yourselves a few tops."

"Don't park within fifteen feet of any fire plug."  
"When you hear a siren it will be either the police department or the fire department who are making a hurry call. The law says you must draw to the curb and wait until they pass, giving them complete right of way."

"Don't pass any street car that is loading or unloading passengers without first stopping and then proceeding slowly so that you will not endanger the life of any person."  
"Don't fail to give vehicles approaching from your right the right of way, everything else being equal."

"Don't fail to report an accident, however trivial."  
"Don't fail to render aid to any person your auto strikes, whether they are injured or not."

**SPORT MAPS TO  
AID MOTORISTS**

Special Directions Assist  
Those on Camping and  
Hunting Trips

Good news for all auto owners who are planning their camping, fishing, or hunting trips through out California is contained in an announcement made today from the Auto Club that special maps, showing the location of game, have been issued by the club's outing bureau.

These maps include Northwestern California and Southwestern Oregon, as well as Central California.  
"Just where you will find duck, quail, geese, trout and deer is shown plainly on the new club maps. Stations for pack animals, butter and eggs and boats are also shown."  
These maps can be obtained at any office of the Auto Club.

**VACATION TIMES  
CALL FOR BUICK**

More People Every Year Turn  
To Automobile When  
Seeing America

Buick sales records at the Tanner & Hall agency, 237 South Brand boulevard, are maintaining the same high level that they have been hitting all year, according to Ray L. Galvin, sales manager, who has been pressing for delivery of more cars to fill the orders that are now on the firm's books and that are increasing every week, in spite of the old bogey that has scared so many dealers, the belief that the summer months must inevitably mean a falling off in the sale of cars.

The contrary has been proven to be the case in the Buick agency, for the demand for automobiles has increased during the summer months, instead of falling off. This increase is attributed by Mr. Galvin directly to the growing habit of many people of taking their vacations in auto travel, thus rendering themselves independent of trains that run on a fixed schedule, and enabling the owners to make their own arrangements as to the time they want to go, and what they want to spend.

That the Buick offers the ideal method of vacation travel, Mr. Galvin maintains, is proven by the large number of them that are seen on every road in Southern California, hailing from practically every state.

**Star Plates Soon to  
Appear on Highway**

A car load of plates carrying the "Star" which is symbolic of the factory, was received from the factory by the Division of Motor Vehicles this week. It will be only a very short time until star plates will begin to appear upon the highways.

**REPAIR FOR RADIATOR**

An old leaky radiator may be sometimes repaired by pouring a couple of tablespoonfuls of flax seed meal into the circulating system. It should be put into the radiator while the water is cool, and the engine should be started so as to distribute the meal.

**AUTO TOURISTS**

Tampa is the "tin-can" tourist capital of Florida with a tent city of more than 400 motor cars and their 2,300 owners and tourists. The camp is subdivided into a city of twelve streets.

**The Car for the Girl  
in Business**

The modern business woman needs her own personal transportation medium. Chevrolet Utility Coupe with high-grade body, refined upholstery, plate glass windows, artistic fittings, stream-lines and riding comfort, fully meets her quality requirements. Its mechanical efficiency and ease of handling make strong appeal, and finally its surprisingly low price and lowest per mile cost decide her choice.

*An Economical Transportation*



- Prices f. o. b. Flint, Mich.  
Two-Pass. Roadster . . . \$511  
Five-Pass. Touring . . . 52  
Two-Pass. Utility Coupe . . . 68  
Five-Pass. Sedan . . . 85  
Light Delivery . . . 51  
Commercial Chassis . . . 42  
Utility Express Truck Chassis . . . 87

See Chevrolet first



Utility Coupé \$680 f. o. b. Flint, Mich.

Nothing compares with Chevrolet

**C. L. SMITH**

Open Evenings and Sundays Colorado and Orange Glen. 2

**MURPHY-DONER SERVICE GARAGE**

312 SO. BRAND BLVD.

Glen. 53

Night Tow-Car Service, Glen. 2754-V

**General Auto Repairing**

JOHNS-MANVILLE BRAKE LINING SERVICE

"Yours for Service"

**No Matter How Carefully  
You Drive—**

You may have an accident occur with your auto any day.

**BE SAFE**

From unexpected expense, and worry by having proper insurance.

Ask us about one of our

**Blanket Auto Insurance Policies**

They protect against loss by—

FIRE—THEFT—PUBLIC LIABILITY  
PROPERTY DAMAGE AND  
COLLISION

Through our experience you are assured of prompt and efficient service.

**Clinton L. Booth**

"AUTOMOBILE INSURANCE EXCLUSIVELY"

At Dodge Agency, 116-20 W. Colorado Phone Glen. 1465



**High in Quality—Low in Price**

Place your order with us and be assured of

**Immediate Delivery**

We Give Real Service to Our Customers

Cars On Display Demonstration Given

**HOLLY MOTOR SALES, Inc.**

Eagle Rock Branch

Garvanza 1062 222 East Colorado Blvd.



LIVES CHANGES IN VEHICLE LAW

Trade Body Head Relates High Spots; Gas Tax Effective Sept. 30

(Continued from page 1) Operators of vehicles must give warning signal fifty feet before turning. All mechanical or electrical signal turning must be approved by the Division of Motor Vehicles.

Right of Way Vehicles entering a main traveled highway from a private driveway or road must yield the right of way.

Turning in the center of the road is permitted in residential districts if no vehicles are approaching from either direction.

Passing On Highway It now becomes a misdemeanor under the law to increase your speed after you have been given notice that a vehicle in the rear is about to pass.

Spotlights should be fixed in such a manner that the center of beam shall not be less than two inches above the level surface upon which the vehicle stands.

Spotlights should be fixed in such a manner that the center of beam shall not be less than two inches above the level surface upon which the vehicle stands.

Spotlights should be fixed in such a manner that the center of beam shall not be less than two inches above the level surface upon which the vehicle stands.

Spotlights should be fixed in such a manner that the center of beam shall not be less than two inches above the level surface upon which the vehicle stands.

Spotlights should be fixed in such a manner that the center of beam shall not be less than two inches above the level surface upon which the vehicle stands.

Spotlights should be fixed in such a manner that the center of beam shall not be less than two inches above the level surface upon which the vehicle stands.

Spotlights should be fixed in such a manner that the center of beam shall not be less than two inches above the level surface upon which the vehicle stands.

Spotlights should be fixed in such a manner that the center of beam shall not be less than two inches above the level surface upon which the vehicle stands.

Spotlights should be fixed in such a manner that the center of beam shall not be less than two inches above the level surface upon which the vehicle stands.

SHIP CADILLACS TO NEW ZEALAND

Right Hand Drive Model for Antipodean Motorists Part of Shipment

A four-passenger Victoria which would scarcely be at home on the streets of an American city has just been shipped by the Cadillac Motor Car company to its distributor in Wellington, New Zealand.

The car was one of a large shipment of Cadillacs going from Detroit to New York by rail and from there to Australia, New Zealand and the island of Java.

A coastal bus service with Cadillac cars as transportation units is conducted in Australia, and the same makes of cars are used in mail service there also in Java and New Zealand, according to W. H. "Bill" Court, of the Court Motor company, 235 South Brand boulevard, Cadillac dealer.

Worm Gear Troubles Due to Misalignment Worm gear troubles all fall under one heading, and that is misalignment. In order to operate properly, the worm must stand exactly central over or under the worm wheel.

Dealers in Small Towns Records show that there are 39,538 dealers in automobiles and commercial cars in the United States.

Service Facilities There are 63,500 shops offering motor vehicle service in the United States. Of these, 27,300 or 43 per cent, are operated in conjunction with car dealer establishments.

Small Town Supply Dealer There are 63,300 dealers who handle automotive supplies and equipment. Of these 26,800, or over 40 per cent, are car dealers who carry a line of supplies as a part of the business.

Regular Inspection Systematic inspection should be made of the universal joint at regular intervals, and if the housing is distorted or loose, or the shaft out of alignment.

Method of Overcoming Smoke Nuisance Told Installation of new rings will not overcome smoking if the pistons are loose and the cylinders out of true.

Trucks on Iowa Farms Iowa has 10,337 motor trucks on farms as compared with 8910 at the end of 1919.

Sleeping on Cabs Sleeping compartments on top of the driving cabs have been designed for motor trucks making long hauls, and employing regular drivers.

Method of Overcoming Smoke Nuisance Told Installation of new rings will not overcome smoking if the pistons are loose and the cylinders out of true.

Method of Overcoming Smoke Nuisance Told Installation of new rings will not overcome smoking if the pistons are loose and the cylinders out of true.

MOTOR INDUSTRY PROVES BIG AID

Helps Many Small Cities Into Prosperity, Says Trade Journal

The approximate value of all physical property in the United States at the end of 1922 was about \$275,000,000,000.

Public property valued at \$15,000,000,000 and public and semi-public utilities valued at \$35,000,000,000 bring the total property valuation for the nation up to \$275,000,000,000.

Registrations The registration of automobiles is one of the best indications of the extent of the market for automotive products.

Registrations The registration of automobiles is one of the best indications of the extent of the market for automotive products.

Registrations The registration of automobiles is one of the best indications of the extent of the market for automotive products.

Registrations The registration of automobiles is one of the best indications of the extent of the market for automotive products.

Registrations The registration of automobiles is one of the best indications of the extent of the market for automotive products.

Registrations The registration of automobiles is one of the best indications of the extent of the market for automotive products.

Registrations The registration of automobiles is one of the best indications of the extent of the market for automotive products.

Registrations The registration of automobiles is one of the best indications of the extent of the market for automotive products.

Registrations The registration of automobiles is one of the best indications of the extent of the market for automotive products.

Registrations The registration of automobiles is one of the best indications of the extent of the market for automotive products.

Registrations The registration of automobiles is one of the best indications of the extent of the market for automotive products.

ANNOUNCEMENT THE STUDEBAKER CORPORATION OF AMERICA is pleased to announce to its customers, friends, and the public generally, its complete line of new 1924 Model Studebaker Cars. THE CARS In design, quality of materials, standard of workmanship, durability, refinements, performance, freedom from repairs, and price, the Studebaker 1924 Model Cars are distinctly the greatest intrinsic values the Corporation has ever offered. THE BIG-SIX THE BIG-SIX LINE comprises four models, mounted on the standard 126-inch chassis with 60 H. P. 3 3/8 x 5 inch motor.

Build Service Crane From Old Side Rails Universal Joints Are Frequently Neglected URGE CHANGE IN HISTORY COURSE Man Drops Dead When Talking to Landlord Austria Now Imports South American Beef IT costs no more to get authorized electrical service on your car. It is likely to save you both time and money in the end.



**We Can  
SAVE  
YOU  
FROM  
\$3.75  
TO  
\$10.75  
ON FABRIC  
TIRES  
FROM  
\$5.20  
TO  
\$29.20  
ON CORD  
TIRES**  
Depending on  
Size

Why pay high prices for the same Standard Make Tires, when you can buy them here at the prices quoted below?

WE GUARANTEE EVERY TIRE AND TUBE WE SELL

**Special**

30x3 1/2  
**KELLY CORD  
STANDARD  
\$10.50**

SIZES	Standard		Super-Size	
	Firsts	Non-Skid	6,000 Miles	10,000 Miles
30x3	\$ 7.50	\$.....		
30x3 1/2	8.95	12.95		
32x3 1/2	10.95	17.50		
31x4	11.95	18.50		
32x4	13.95	18.95		
33x4	14.50	21.50		
34x4	14.95	19.75		
32x4 1/2	.....	26.00		
33x4 1/2	.....	26.50		
34x4 1/2	.....	27.00		
35x4 1/2	.....	29.50		
36x4 1/2	17.50	28.00		
33x5	.....	33.00		
35x5	17.50	32.50		
37x5	.....	33.00		

Prices Subject to Change Without Notice

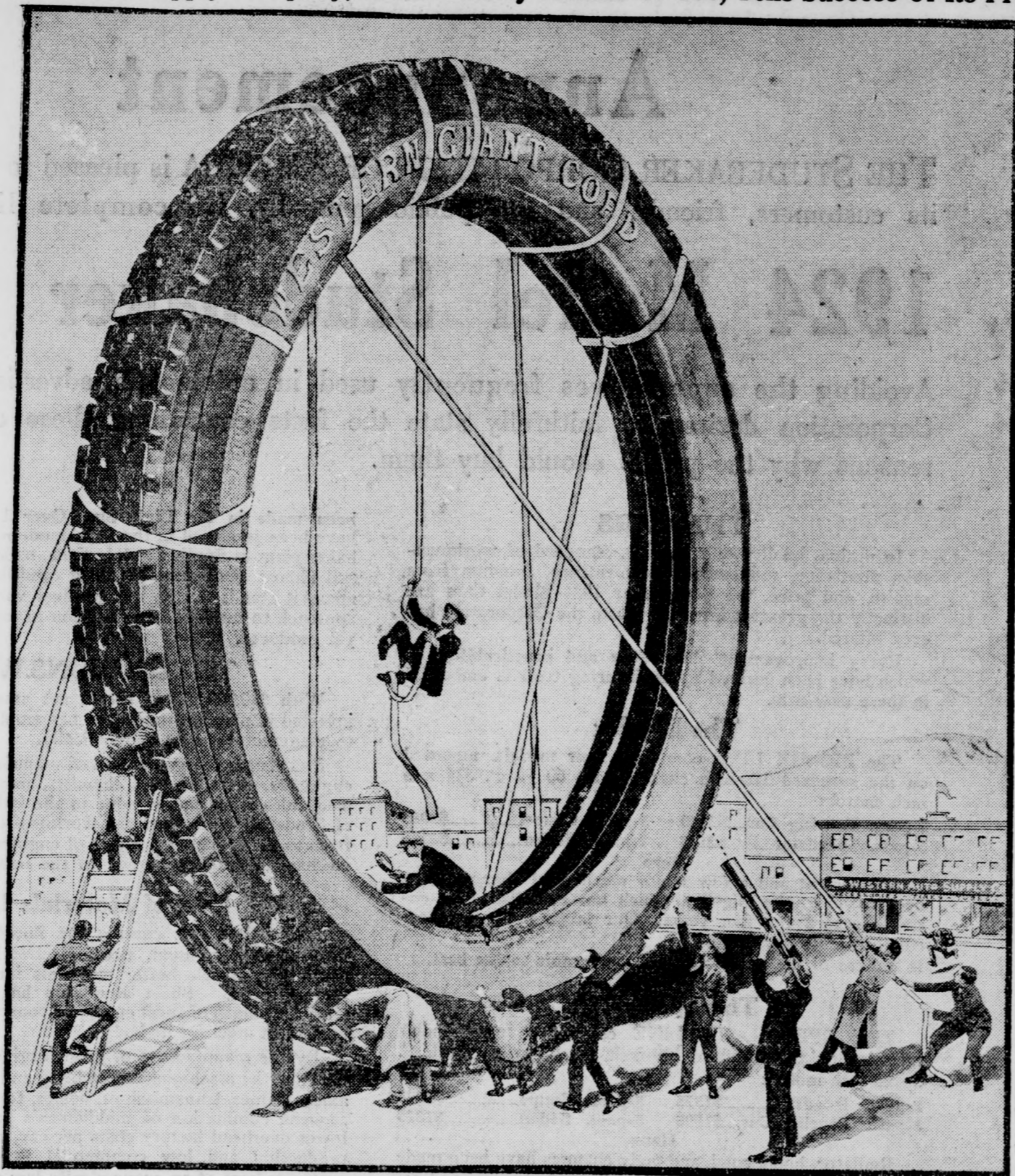
**Automobile  
Tire Co.**

OF CALIFORNIA, INC.

H. A. Demarest, Pres.

**143 South  
Brand Blvd.  
GLENDALE**

**GIANT CORD TIRE WINS POPULARITY WITH MANY MOTORISTS**  
Western Auto Supply Company, After Twenty Months Of Use, Tells Success Of Its Product



Here's the Giant that conquered the west, according to the Western Auto Supply Company. Unwrapping and inspecting the new tire upon its arrival about twenty months ago. Twenty months ago since the tire made its appearance and, so reads a statement from the company today, it has won great success among many motorists. Radical departure from the usual form of tire construction was made. During the first four months of this year more than fifty-five carloads of the tires were shipped to the Western Auto chain of more than seventy-five stores.

**\$5.00 ENROLLS YOU**  
**Ford**  
*Weekly Purchase Plan*

Why waste any more time longing for the pleasures you can get out of a Ford Car? Start now to make the Touring Car or any other type you may select, your own.

Soon you will have it to drive anywhere you want to go—camping—visiting—picnicking—or to your work.

Under the terms of the Ford Weekly Purchase Plan you can enroll for as little as \$5.

We will deposit your payments in a local bank at interest. You can add a little every week. Soon the payments plus the interest, will make the car yours.

You will be surprised how little time it really takes to get a Ford after you make the start. Don't put it off—Enroll today. Come in and let us give you full particulars.

Open Sundays and Evenings

**Jesse E. Smith Co.**

Authorized Ford and Lincoln Dealers

Telephones Glen. 432-433-434

115-125 W. Colorado St.  
Glendale, Calif.



News Want Ads—Best Results

Now that twenty months have elapsed since the debut of the Western Giant Cord we can look back over the period of time and trace the steady growth of this tire which proved a revelation to the western motorist—a revelation from the standpoint of service and dependability. This popularity is evidenced each day by the hundreds of motorists who are trying one and then deciding they want these tires all around.

Twenty months ago in a published notice the "Western Auto" said: "In perfecting the 'Western Giant' the radical departure from the usual form of construction is made in the design and construction of the tread. Tire manufacturers claim that, while a durable and soundly constructed carcass is the necessary foundation of a good tire, the tread itself has in its design and general construction that which makes for long mileage, traction and freedom from skidding.

**Cover All Points**  
"It seems that in the 'Western Giant' tread the manufacturers have covered all points effectively. In addition to having the most expensive type of carcass, the tread, which is flat surfaced and very thick, is built right up on the top—therefore, when the tread is worn out, nearly all the rubber is gone, no waste rubber remains on the side of the carcass. The rubber is placed where it is needed and where it will be used.

"The wide, flat surface of the tread, with its scientifically placed blocks and buttresses, according to tire engineers, is the assurance of perfect traction.

"As will be noticed in the picture reproduced here, there is a row of suction cups down the center of the tread. These, together with the high tapering bars at the side, form a non-skid contact which holds securely to slippery pavements and renders use of skid chains unnecessary.

**Based On Experience**  
"In connection with the introduction of this new tire, George Pepperdine, president of 'Western Auto,' said:

"We have been selling tires for a good many years, and at the same time studying tires, and when we decided upon the design and form of construction of Western Giant tires the decision was based upon our experience and knowledge of what motorists want and need in a tire.

"This tire is made with our own moulds and according to the very best standards of construction by three of the most modern equipped tire factories in the United States, which are striving to produce the immense quantity necessary to supply demand occasioned through seventy-five 'Western Auto' stores.

**Two Policies**  
"There are two policies in the manufacture and merchandising of any article. One is to figure what people will pay for it and then do the best for that price; the other is to build the utmost of quality, strength and service into the product and then sell it for the lowest possible price conducive with big production and economical distribution.

"In the making and selling of

**HEAVY GRADE IS  
EASY FOR KNIGHT**

Water in Radiator Refuses To Boil in Mountain Climb, Says Smith

The efficiency of the Willys-Knight sleeve valve motor was shown in a most conclusive manner when a 1922 roadster, carrying George T. Smith, 228 South Brand boulevard, and a member of Smith-Sloan, Inc., local agents for the Willys-Knight and Overland cars, climbed the High Sierras, went through Tioga Pass, and bested the most difficult mountain grades on a two weeks' jaunt without ever boiling the water. Mr. Smith admits that on two occasions the thermometer showed a rising temperature, but the water, he asserts, never boiled, while many other cars they met and passed were running away up beyond fever heat.

He was accompanied by W. A. Lane of Los Angeles, the owner of the car, and except for putting in oil and gasoline they never had to pay any attention to the car or to worry about what it was going to do. The trip covered 955 miles and led them to Mammoth Lake, Grand Lake, and they packed back into the mountains for two days, catching the limit of fish wherever they stopped. In Shadow Lake they landed a record catch, for this season, of Golden trout, a rare species that is found only in two lakes in California.

Mr. Smith returned to Glendale Thursday, more than ever convinced that the Willys-Knight motor is the finest piece of machinery in any automobile today.

**ELIMINATING SQUEAKS**

A body resting unevenly on the frame of a car will cause a cracking sound. By placing strips of leather between body and frame (preferably where body bolts pass through frame) this noise is often overcome. A rubbing or rattling noise can most frequently be attributed to the edges of doors rubbing against their frames.

**EFFICIENT STEERING**

When steering sharply to avoid hitting something, always apply the brake at the same time. Steering can be used as a safety measure, but never depend upon it. Stopping and steering will produce best results.

Western Giant tires, as in our other merchandise, we are adhering strictly to the latter policy," concluded Mr. Pepperdine.

Today users admit that the tire has lived up to the claims made for it. During the first four months of this year more than fifty-five carloads of tires were shipped to the "Western Auto" chain of more than seventy-five stores.

**BUICK**

*"When Better Automobiles Are Built  
—Buick Will Build Them"*

**Tanner & Hall**

Phone Glen. 50

237 S. Brand Blvd. Glendale

**CLEVELAND  
SIX SEDAN**

There are a few six-cylinder sedans which equal the Cleveland in beauty, comfort, performance, and over-all operating economy. But they sell for more than

**\$1295**

F. O. B. CLEVELAND

now the price of the Cleveland Sedan

Body by Fisher

**Smith & Howe**

Phone Glen. 1400 116 No. Maryland, Glendale

CLEVELAND AUTOMOBILE COMPANY · CLEVELAND

News Want Ads For Profitable Results

Magazine and Feature Page

Daily News Letter

General News and Gossip from Staff Writers at Home and Abroad.

TODAY—Liquor "Pickup"—Three Wet Provinces—An Enduring Sandwich.

MONDAY—Golden Folly—Main Street Goes—Pursuit of the Rainbow.—By Webb C. Artz. San Antonio Staff.

By WILLIAM J. HUSKE For International News Service MONTREAL, Canada, July 28.

Quebec is one of three wet provinces of the eight that make up the Dominion of Canada.

Billy Walker

I never dreamed of anything like this happening until I wrote at least the other side of the Mississippi River, said Billy when he and Nannie were lassoed by the gypsies.



"They are so terribly mischievous, I don't know what in the world they are up to," said Nannie with a frown.

HINTS FOR THE MOTORIST

ALBERT L. CLOUGH Editor Motor Service Bureau Review of Reviews

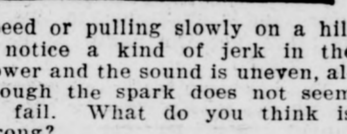
Questions of general interest to the motorist will be answered by Mr. Clough in this column, space permitting.

THE STEAMING RADIATOR

Either the Cooling System is Overloaded or It is Not Fully Active. When radiator water boils away, under conditions where no material evaporation should occur, it is either because the cooling system is called upon to dispose of more heat than it was designed to handle.

HAS A WEAK CYLINDER

L. B. writes: Until very lately the engine of my car has run perfectly, but just recently it does not sound right.



speed or pulling slowly on a hill I notice a kind of rattle, and the power and the sound is uneven.



Timely Views of World Topics

"CUT MILLIONS SPENT TO PUNISH CRIMINALS; SPEND IT PREVENTING CRIME"

That the millions spent for institutions and machinery for punishing criminals might be reduced and that money used in preventing crime and criminals is the wish of Adolph Lewisohn.

Uncle Wiggily Bedtime Stories

UNCLE WIGGILY AND THE TWO DOORS

It was about a week after Uncle Wiggily had given Sammie Little-tail a lesson how to dig a burrow, or underground house, that something else happened.



"Sammie can't get out his back door!" laughed the Wolf.

toward the front door and he nearly froze stiff with fright as he whispered: "Oh, it's the Fuzzy Fox and the Woozie Wolf! They're coming in my front door, Uncle Wiggily!"

"My goodness!" thought Uncle Wiggily, when he heard this. "If Sammie boy didn't know that I had made two doors to his burrow he is going to be caught."

ON THE SPUR OF THE MOMENT

A Little Slice o' Life It was a stuffy evening. And neighbors were leaning out of their windows trying to get some fresh air.

Some People Believe That—It always takes fifteen or twenty years to make good in New York.

At present, every bit of arable land will not be sufficient to supply our own needs, and we will have to begin importing.

PROFESSIONAL CARDS

DR. JOSEPH ALBERT KLEISER Dentist Suite 3, McElroy Bldg. 107 1/2 South Brand Telephone 1335

Dr. Otey's Infirmary of OSTEOPATHY 702 E. Broadway, Glendale 2201

W. H. Appleton, M.D. Rooms 14-15 Central Bldg. Office Phone Glendale 71

P. S. Traxler, M. D. PHYSICIAN AND SURGEON Diseases of Genito Urinary

Glendale Electronic (Abrams) Institute LOUIS S. BADOUB, Manager 430 W. Doran St., Glendale 1497-W

SHAMPOOING HAIR DRESSING Switches Made From Your Own Combing 407 South Pacific Avenue

JOSEPH B. CURRIER CONTRACTOR and BUILDER Estimates cheerfully given FINE HOMES A SPECIALTY

Trucking (WE MOVE) PRICES REASONABLE HARRY'S TRUCK CO. 312 E. Broadway, Glendale 184

HEALTH! HEALTH! So easy for baby and adults. Simply drink Goat Milk from Warner's Goat Ranch

Carpenters and Painters HOUSES AND GARAGES Work Guaranteed

GLENDALE RAPID TRANSIT CO. 200 W. Broadway SPECIAL ATTENTION GIVEN TO BAGGAGE AND ALL LIGHT HAULING

MORGAN BROS. TRANSFER (Formerly) Jesse's Express Glendale 75, 117 E. Broadway

CESSPOOLS Special attention to overflows. Sewers, What You Want When You Want It

CESSPOOLS E. H. KOBER 110 W. Bldy. Phone Gl. 889

LEWIS C. DAVIS Shades, Linoleums, Curtain Rods, Linoleum Rugs

ROOFING New Composition Roofs Laid, Old Roofs Rebuilt or Repaired, Material and Labor Fully Guaranteed.

ROBINSON BROS. TRANSFER and FIRE-PROOF STORAGE COMPANY Phone Glendale 428

"CAP" STUBBS—What Else Could He Do!



Copyright, 1923, George Matthew Adams By EDWINA

DAMAGED

# Woman's Page

## Serving his Sentence



It was not Wallie Gerlin's fault he was superstitious. The mountain folk in his part of the country never questioned the signs and then, too, there was Mahally Wier.

Wallie Gerlin, gangling lad of 20, slipped out of the cabin door for the long walk to the home of Mahally. He kept well within the shadows, ready to disappear in the brush at sight or sound of any other person. This was a secret and necessary errand, for Wallie was to be married and everyone in the mountains knows that it is important, on such occasions, to look first into the future.

As he climbed the hill the young man hesitated. Mahally was a fearsome woman. Some said she was a hundred and fifty years old and that she was the devil. Strange things had been seen around her shack and there were scores of stories to bear witness to the truth of her predictions. Wallie fingered a coin in his pocket and hoped with complete faith in the old woman's powers that what she would say would mean happiness.

The waving candlelight brushed shadows across the wrinkled face of Mahally while her stiff fingers fumbled with an assortment of twigs, leaves, and bits of fur. Wallie, his face the one white spot in the room, stared at the hand and knew it was writing his future. The old woman raked the portentous assortment into a pile and spread it out once more. Again she repeated the act. Then she spoke in a voice in which there was no feeling.

"Three times it has come the same. There is no doubt. The hills, the trees, the girl are here. You are gone. No one can say where. You have left the world."

No more solemn sentence had ever been spoken in court. Wallie received it as a man his doom.

"When," he asked, "when do I have to go?"

"Before the corn is ripe."

Down the hill the lad walked, making his plans for the brief span on life that was yet his. How would he tell Millie? Would it be best to sit and wait for fate to overtake him? Wallie thought of the things he had wished to do, or Millie's grief when he told her the news. He did not go back to the village; instead he walked toward the plains and the cities. He would see all he could before he died.

The sailors who persuaded a dejected youth to join their crew, and thus won a commission from the captain, discovered early he was not of the sea. Wallie worked

doggedly and listlessly. The time was but three months at the most. Across the Pacific to the Fiji Group and to the little known island of Rotoma, the schooner Iswell went after copra. By the time the cargo was loaded Wallie Gerlin, counting off the days on his calendar, knew that the corn would be ripe at home within the month.

"Maybe I'll get back to the United States," he said to himself, "but more likely I'll die on this ship."

The Iswell rode into the rains. Through a choppy and sloppy sea she rode for days, poking slowly and stubbornly toward home. The rains persisted, shutting off the vessel with curtains of dirty gray. The days went into weeks and no vessel was sighted.

"It will be two months if this keeps on," the mate said, "before we hit the Golden Gate."

Wallie stared over the rail. The end of the month had arrived. He wondered why he did not feel warning of his approaching death. It must be, he decided, there was going to be a storm and he would be washed over or the ship would sink. He wished he could see a sail, a single cloud of smoke on the horizon to denote a passing steamer. Instead there was nothing but the ceaseless rain which shut off the sea and the world.

When the Iswell came through the Gate the skies were blue and the sun was shining. She warped to a wharf and started unloading the copra which jumped from the hold and raced upwards through pipes, started and carried by a great suction pump. The crew herded together a minute, taking their bearings in a port strange to most.

"Well," Wallie heard the voice of an important looking man, one of the owners perhaps, or a buyer of the cargo, "you were certainly a long time. We were worried, with all the storms and nobody speaking of you—thought you had gone down. For sixty days you have been completely off the earth so far as anyone knew!"

Off the earth? Away from the world? Wallie recalled the words of old Mahally. That is what she had said! The corn had ripened at home now and was harvested. He had his wages in his pocket. "What yer going' to do? Come along and we'll have a time together."

Wallie looked at the sailor who offered the invitation.

"Not much. I'm going back home to get married!"

Copyright, 1923, George Matthew Adams

## DAILY FASHION HINT

Prepared Especially for The Glendale Evening News



PICTORIAL REVIEW

1682 1687

### FROCKS OF SOPHISTICATED SIMPLICITY

The frock of dark blue flat crepe, featured at the left, centers its trimming detail below the crushed girdle at the front, giving two accordion platted flounces the place of honor. The blouse has short kimono sleeves with turnback cuffs and a narrow turn-down collar of self-material. There is an Egyptian motif embroidered on the front in place of the once-ubiquitous monogram. Medium size requires 6 1/2 yards 36-inch material.

The second model would be exceedingly effective in gray eponge or ratine. It is especially well adapted to sporty uses because of its extreme simplicity. A removable vestee is provided for the front of the blouse, although it is omitted in the illustration. At the back the skirt and blouse are cut in one piece; at the front, the skirt is attached to the lower edge of the blouse. Medium size requires 3 1/2 yards 36-inch material.

First Model—Pictorial Review Design No. 1682. Sizes, 34 to 44 inches bust, and 16 to 20 years. Price, 35 cents. Transfer, 12820. Blue or yellow, 25 cents.

Second Model—Dress No. 1687. Sizes, 34 to 48 inches bust. Price, 35 cents.

## Side Talks by Ruth Cameron

**THE BLIND MOTHER**

The more I see of the Boy Scout movement, the more I marvel at the good fortune of the modern mother who has so potent an ally to help her in rounding out the character of her boy.

And the more I wonder at the blindness of the mothers who refuse to take advantage of this wonderful opportunity. For, alas, there are mothers who will not let their boys become Scouts.

I met one the other day.

We were talking of the Boy Scout camp where our neighbor's boy is spending a month and she was reading us part of his enthusiastic letter which she had just received. It was all of campfires and stunts in the "opry house" (an old barn), of swimming races and overnight hikes, of useful work and healthful play with other "rookies and veterans."

As she tucked the letter back in the envelope for safe keeping, she turned to the other woman: "Is John old enough to join the Scouts yet?" she asked.

into one pint of heavy cream which you have beaten stiff. Freeze as above described.

**Coffee Parfait:** Boil one cup of sugar and one-fourth cup of water together for five minutes, then pour it slowly onto four beaten egg yolks; put the mixture into the top of your double boiler and let cook till it thickens a spoon. Remove it from fire and beat till cold, then add one-half cup of very strong made coffee and one-half teaspoon of vanilla. Fold this into two cups of heavy cream beaten stiff, and freeze in a mould as above directed.

All inquiries addressed to Miss Kirkman in care of the "Efficient Housekeeping" department will be answered in these columns in their turn. This requires considerable time, however, owing to the great number received. So, if a personal or quicker reply is desired, a stamped and self-addressed envelope must be enclosed with the question. Be sure to use your full name, street number, and the name of your city and state.—The Editor.

(Copyright, 1923, George Matthew Adams)

## BEAUTY CHATS

**CUCUMBER PREPARATIONS**

Cucumbers being cheap and plentiful now, it is an excellent time to make yourself some cucumber preparations, for present and future use. The first to make is Cucumber Milk, which whitens the skin in a quite remarkable way, agrees with every complexion, no matter how sensitive, and which helps to contract large pores.

**Cucumber Milk**  
Oil of sweet almonds..... 4 ounces  
Fresh cucumber juice..... 3 ounces  
Essence of cucumbers..... 3 ounces  
Powdered castile soap..... 1/4 ounce  
Tincture of benzoin..... 1 drachm

The cucumber juice is made by slicing cucumbers thin, boiling them in a very little water, and when mushy putting them through a sieve and then a cloth. Make more than ten ounces of this. Ten ounces goes into your formula; one and one-half ounces of the surplus is mixed with the same amount of alcohol, and that makes the three ounces of essence. Add the soap to the essence and shake, when mixed add the juice, then add the oil and benzoin. You'll find it easier to mix the ingredients in a bowl, and stir and beat until you've a creamy fluid. Put it in small bottles, keep in the dark. The skin absorbs it readily; it is delicious to use.

Make Cucumber Cold Cream now, too. Have you either of my pet cold cream formulas? Use whichever you like best, but instead of the rose water use cucumber juice. The juice must be thin, or the cream will be difficult to massage with, therefore don't squeeze your mushy cucumber too hard through the cloth. You want a fairly clear liquid when you're making cucumber cream. This is whitening as well as cleansing.

These preparations have a quality of virtue that only the very costliest ready made lotions possess. It pays to make your own creams and such things, for the satisfaction of knowing what's in them.

**Blue Eyes:** To bring out these golden tints in your hair, try egg shampoos and sun baths, or henna shampoos.

You can make your eyelashes longer and perhaps a very little darker if you rub them with a little castor oil. The dark lashes and brows would be a charming contrast to your light hair.

Anna Mary: One of the best astringents for a flabby skin is ice. The place under the chin should be rubbed with ice for about ten minutes every day.

Catharine W. G.: If you cannot go to a specialist, the only way to remove superfluous hair from the face is to pull out the coarse hairs by using blunt end tweezers. Bleach the finer hair with peroxide.

Fredaline: As your hair is a-burn, you will have no trouble to color the part that is turning gray through the use of henna. This will also act as a tonic for the hair.

All inquiries addressed to Miss Forbes in care of the "Beauty Chats" department will be answered in these columns in their turn. This requires considerable time, however, owing to the great number received. So, if a personal or quicker reply is desired, a stamped envelope must be enclosed with the question.—The Editor.

(Copyright, 1923, George Matthew Adams)

## Diet and Health

By Lulu Hunt Peters, M.D.

Author of "Diet and Health, with Key to the Calories"

### ANSWERS TO CORRESPONDENTS

"Dear Doctor:

"I am a girl of 23 years of age. I weighed 200 pounds and carried at least 80 of them across my hips. At present I have lost 34 pounds in just two months and I feel rejuvenated.

"My father weighs 321 pounds and my idea was that I had to be like him because I had inherited the tendency until I noticed your articles. I notice that you advise to stop a while after losing 40 pounds. I have felt so fine all during my dieting, and am wondering if it is necessary to stop now?—M. T."

I have known of many persons who have not stopped dieting until they got down to normal, and apparently they were not harmed in the least by it. The idea of going back to maintenance diet for a week or so—not a gaining diet!—is simply to allow a greater variety of foods for a possible deficiency of some elements that might not be taken in a reducing diet. However, if you have felt so fine you are undoubtedly getting all the elements you need, and I think you can go on without stopping until you can get down to normal.

I am glad you have found out that that fat is not inherited. How about getting after daddy?

Miss M.—I have not heard or read of anything that would remove a cataract except an operation. The operations are very successful so I would not worry about them. Take your mother to an eye specialist.

Mrs. Z.—I think if you will wear a rather firm brassiere, it will help you. Your breasts will go back to normal after you wean your baby. It takes some time.

R.—It may be that you have one at this stage of a boy's life. She must be interested in all that concerns him without being intrusive; she must guide him without seeming to; she must keep his confidence without making him a mollycoddle. She must remember the song with which she lulled his baby slumbers:

"Sail, baby, sail out across the sea,  
Only don't forget to sail back again to me."

And let her not be afraid lest he forget to sail back again, for if she keeps very close to him in spirit on that maiden voyage she need never fear that the tide will carry him far from the safe haven of her protecting love.

(Copyright, 1923, George Matthew Adams)

## PHYSICIANS AND DENTISTS

**EDWARD SWIFT, M. D.**  
PHYSICIAN and SURGEON  
Suite 505 Lawson Bldg.  
Brand Blvd. and Wilson  
Office and Residence  
Phone Glendale 2081.

Office Phone Glen. 397  
**DR. R. W. SHERRED**  
DENTIST  
Central Building, 111 East Broadway, Glendale, California  
X-RAY Office Hours, 9-12, 1-5

Residence 553 W. Patterson Ave.  
Office Phone Glen. 2071; Residence Phone Glendale 1917.

Office and Res. Glen. 545  
**DR. T. C. YOUNG**  
620 E. Broadway  
GLENDALE, CALIF.

**DR. C. W. TAYLOR**  
Office 111 East Broadway, Central Bldg. Hours, 9 to 11 a. m., 1 to 3 p. m., evenings by appointment.  
Glendale, Calif.

**DR. J. P. LUCCOCK**  
DENTIST  
Phone Glendale 488  
620 East Broadway

**ROMNEY M. RITCHEY**  
A. M., M. D.  
Office and Residence Phone—  
Nervous and Mental Disorders  
Suite 305 Lawson Bldg.  
Brand Blvd. and Wilson

Phone Glendale 1433  
**DR. R. C. LOGAN**  
DENTIST  
Latest X-Ray Equipment  
Suite 305 Lawson Bldg.  
Brand Blvd. and Wilson

**F. M. ROSSITER, M. D.**  
L. R. C. P., M. R. C. S., London  
Office, 201-A W. Broadway  
PHONE S  
Residence Glendale 1032  
Glendale 526-B

**DR. FRANK N. ARNOLD**  
DENTIST  
Flower Block, Over Glendale Savings Bank, Brand & Broadway.  
Hours, 9 to 12, 1:30 to 5  
PHONE GLENDALE 458

**DR. WM. C. MABRY**  
General Diagnosis and Medical Treatment  
206 SO. BRAND BOULEVARD  
Rooms 17-21 Monarch Building,  
Hours, 1:30 to 5 P. M., Tel. Glen.  
125; Res. 115 East Broadway.  
Telephone Glendale 370.

**Dr. Walter R. Crowell**  
DENTIST  
Phone Gl. 2604, 111 E. Broadway  
Suite 6, Central Building  
GLENDALE, CALIFORNIA

**RESERVED**

Phone 195  
Glen. 195  
We Deliver  
"A Drug Service That Really Serves"

**ROBERTS & ECHOLS DRUG STORE**  
102 E. Broadway  
GLENDALE, CALIF.

**Notice to Corporations** Your Capital Stock Tax Return must be filed with collector of internal revenue on or before Tues., July 31, 1923.

We can render expert advice and assistance in the preparation of these returns.

**OLIN & HUTCHINSON** Accountants—Auditors  
Gl. 1178W; 150 S. Brand

## Heart and Home Problems

Dear Mrs. Thompson: I am twenty-four years old and have been married two years. I married a man whom my parents opposed, but I felt that I knew better than they did and so I acted against their wishes. This man was four years older and had not a very good reputation. He drank quite a little, but he promised that if I would marry him he would give up drinking. He seemed to love me very much and said such wonderful things to me that I simply couldn't give him up. I had never had many sweethearts and so it meant a great deal to be loved as much as he said he loved me.

After we were married I began to realize that I didn't have the power over him I had believed would reform him. When he would go off and drink I simply couldn't stop him. He didn't even come home at night and sometimes he stayed away as long as three days without my being able to find him. On his return he would be cross and hard to live with. But during the times when he was sober he was the same wonderful man and it seemed to me I could stand anything just to go on living with him.

We had a little girl after we had been married a year, but she died when she was three months old. My husband loved children and he couldn't get over the loss of the child. He drank more than ever and didn't seem to care anything about me.

Now he has left me and is living with a woman who has been ruined by drink. I went there to see if I couldn't make him come home, but he wouldn't come. He said he wasn't good enough for me and I was lucky to have him go away. He begged me to forget about him and said he could never think of returning.

My father wants me to divorce my husband and come home. He also went to see my husband and told him he was trying to influence me to get a divorce. My husband agreed with my father and said it was the only thing to do.

It breaks my heart to do this because in the two years I have been married my love has grown stronger. It seems terrible that I cannot help the man I love to lead a better life. I don't know what to do. What would you advise?

MILDRED.

Divorce seems the only course for you. To remain the man's wife is not helping him and it is prolonging your misery. After you are free and again lead an independent life you will feel your disappointment less and less keenly. It will not do your husband's character any good if you sacrifice yourself and wait patiently for his return and reform. Your husband must feel the desire within his own heart to reform, and unless he does nothing will help him.

Dear Mrs. Thompson: I am a young man still in my teens. I am very much in love with a girl of high social standing. She says that she cares for me also, but I am somewhat doubtful about it, especially at times. Although I am a trifle young to be thinking of this, I would like your advice as to how I may find out whether she really does care for me. She is a beautiful and thoughtful girl, one that a man would hate to lose.

IN DOUBT.

The only way to find out for sure whether a girl really cares

All of the seventy-four tenants of an apartment house in Newark, N. J., can receive radio broadcasting by plugging into the system with which the building has been equipped.

Invented about ten years ago the production of artificial silk by the viscose process now exceeds that of the natural throughout the world by about one-third.

Tokio by attaining a population of 5,164,000 has become the third largest city in the world.

## THE MAIN THING ON MAIN STREET

**Daily Buzz**  
MAIN STREET'S LEADING NEWSPAPER

**LATEST INVENTION ON VIEW**

T. EDISON SMITH, THE BOY INVENTOR, GAINED NEW LAURELS TODAY. HIS LATEST INVENTION—THE MOTORLESS AUTOMOBILE WITH HOUSEHOLD CONVENIENCES—IS COMPLETE. NOT ONLY MAIN ST., BUT THE ENTIRE WORLD HAS ITS EYES ON THIS YOUTHFUL WONDER OF THE AGE.

BY CRACKIE, SHE'S A HUNDINGER!  
SUPERB! MARVELOUS!

GENTLEMEN—BE-HOLD, MY LATEST STROKE OF GENIUS—THE MOTORLESS AUTOMOBILE WITH ALL HOUSEHOLD CONVENIENCES

OH, F' HEAVENS! SHE TAKES!

HONK HONK!

© GEORGE MATHIAS ADAMS

## By L. F. van Zelm

GENTLEMEN—BE-HOLD, MY LATEST STROKE OF GENIUS—THE MOTORLESS AUTOMOBILE WITH ALL HOUSEHOLD CONVENIENCES

OH, F' HEAVENS! SHE TAKES!

HONK HONK!

© GEORGE MATHIAS ADAMS

## AMAGED



## SELLING A CITY THAT IS SOLD ON ITSELF

Fabulous profits, vigorous growth, up-to-the-minute civic improvements, and a general atmosphere of prosperity and happiness are immediately suggested by the very name of GLENDALE.

You who live here, invest here, and who daily profit by the phenomenal growth of Glendale, know the truth—you have seen at least a portion of the transformation that has elevated Glendale to a high rank among the cities of the West in the last three years, and you believe in the inevitable growth of Glendale to come in the immediate future.

You are sold on Glendale—and 10,000 others are sold on Glendale, and have proved it by settling here to join hands in the mighty forward movement that is to continue right here as long as Southern California remains the goal of America.

Today the tide of incoming Americans is flooding the entire Southwest at an ever-mounting rate.

Today is the time to reach thousands of these prosperous, energetic newcomers with the marvelous story of Glendale.

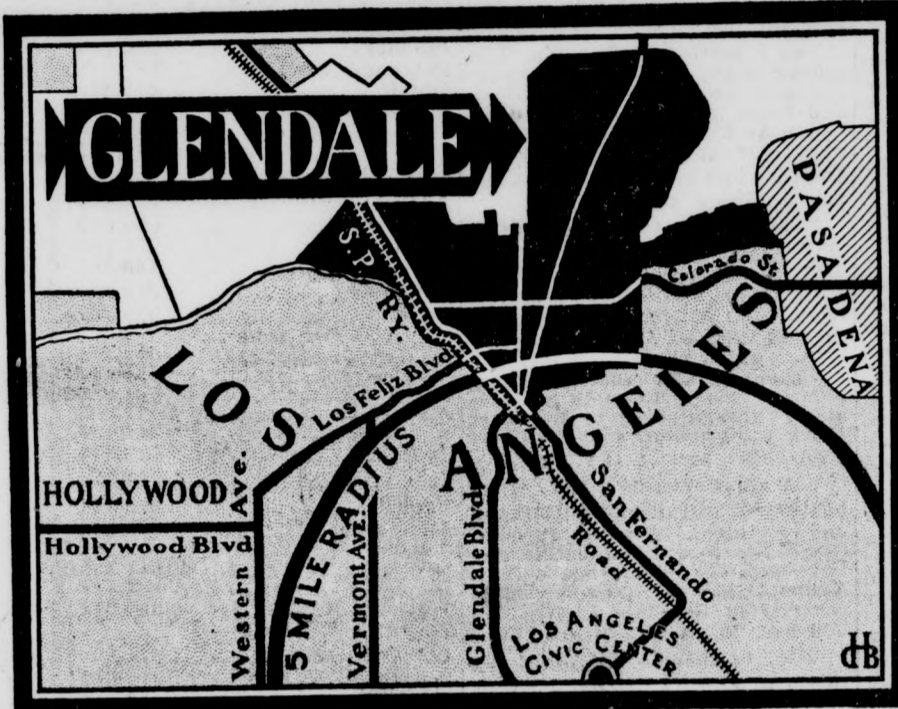
Today the first message of united Glendale is hard at work turning the thoughts of many of these good people towards our forward-marching city.

Today you should begin to study the best way in which you can help to sell Glendale to the rest of the world, thus co-operating in the present campaign headed by the Chamber of Commerce, but cordially supported by every other organized group of citizens in the city.

The result of all our united efforts will make the name Glendale mean bigger, better, richer life to more people every year.

It is easy to sell others on a city that is sold on itself.

# Glendale



## On the heart of Metropolitan Los Angeles

**F**ORWARD-MARCHING Glendale must GROW!—bigger—better—richer—with ever increasing momentum, as surely as the great tide of American population swings westward.

Ceaseless streams of prosperous people seeking better homes and happier lives flow into the great metropolitan area of Los Angeles month after month and year after year, bringing money, energy and opportunity—and Glendale, like a WEDGE OF GOLD piercing nearly to the center of this great metropolitan area, presents, we believe the GREATEST OPPORTUNITY OF ALL.

Study the map,—consider the value making location of this wonderful city,—at the focal point of rail and highway serving the great growing communities of Pasadena and Hollywood,—but CLOSER to Los Angeles center than either!—Glendale holds the KEY POSITION in the growth of a mighty city.

Let facts alone tell the story.

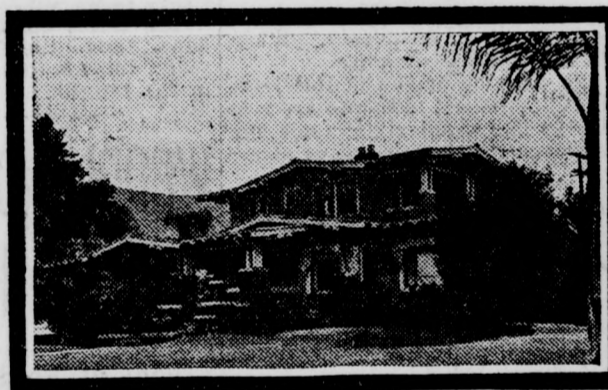
Population in 1920—13,356. Population now over 42,000 with all the increasing values that such a wild-fire growth brings, enriching directly every citizen and property holder in Glendale. Note the actual figures of the sale and resale of the charming Glendale home shown on the right, not an extreme case at all, only one of hundreds equally profitable.

And this marvelous growth is just beginning.—TODAY Glendale holds greater opportunities for happiness and profit than ever before.

Facts, not guesses will bring you sooner or later to Glendale. Call on our secretary at once for reliable information or if you can't call, write for the complete story of Glendale in a new booklet just off the press.

**Glendale Chamber of Commerce**

## The Fastest Growing City in America



This Glendale home in a strictly residence district was purchased first for \$12,500 and 24 months later it sold for \$21,000, making a monthly profit of \$354 for two years. These typical figures and many others even more startling are on file at the Chamber of Commerce for your inspection.

Glendale Chamber of Commerce.

I want to know why Glendale is NOW the best place in Southern California for me to live and invest.

Name \_\_\_\_\_  
Address \_\_\_\_\_

### This is our plan of campaign—

I. In order to reach the greatest number of possible future citizens at the least expense per person, the following schedule of advertising has been adopted. Watch for advertisements.

Yesterday, The Los Angeles Examiner.

Next Friday, August 3rd, Los Angeles Times.

One week later, August 10th, Los Angeles Evening Herald.

This same schedule will then be repeated every three weeks throughout the year.

II. In order to answer everybody's questions a carefully prepared, fully illustrated booklet has been prepared and is now on the press. Copies will be sent with a personal letter from the Chamber of Commerce to every outsider who asks for information about Glendale.

III. Artistic signboards will be erected, as funds permit, at the various gateways to Glendale, informing newcomers about the unusual advantages of this particular location.

### This is the way it is paid for—

The advertising service fund of the Chamber of Commerce is kept up by popular subscription and by membership fees. The present campaign is made possible by the public-spirited citizens who recently joined, or who have long supported the Chamber of Commerce. The functions of this body are necessary to the organized selling campaign which every progressive municipality must maintain. Your support is necessary, too, if you have not already contributed.

### This is what you can do to help—

I. Sell Glendale to every outsider you talk to. Tell the truth as you see it, sincerely and as forcefully as you can and tell it often.

II. Contribute to the advertising service fund of the Chamber of Commerce and get all the organizations of which you are a member to actively support the campaign to make our city grow.

III. Help the committee in getting facts that can be used in a convincing way to tell our story better. You will note in the present advertisement reproduced on this page that a map is used to locate Glendale for the newcomer, and a photograph is used of a home that increased in value \$8500 in two years.

We know that the rate of increase here shown is not by any means extraordinary for Glendale. But the more times we can tell this story and the more photographs and signed statements of similar increases in value that we can secure, the more convincing will we be.

Dig up these valuable facts for us, send us signed statements and help us prove what we know to be true, that every foot of property in Glendale is a good investment, and that this prosperous condition plus our natural advantages, makes Glendale the best place to live in the entire United States.

First Advertisement of the Present Campaign

## Chamber of Commerce Advertising Committee

W. L. TWINING, Chairman

JOHN R. CASE, Jr.

W. H. REEVES

P. J. HAYSULDEN

LLOYD H. WILSON

# DAMAGED

IF YOUR LOT IS CLEAR WE WILL BUILD AND FINANCE YOU A HOME

We furnish plans and specifications free of charge.

If you have your own architect, show us his plans.

We will gladly give you estimates free of charge and we charge no bonus on loans.

SAWYER & BOLEN

211 West Broadway Phone Glen. 1723

We Are Agents for 100 ACRES Industrial Property

—Along Southern Pacific Main Line Right-of-Way, spur tracks available for manufactories; between Glendale and Burbank

CHEAP POWER AND NATURAL GAS. See

Roy L. Kent Company A. L. BAIRD, Mgr.

130 S. Brand Blvd., Phone Glen. 408

News Want Ads—Best Results

INDEX TO COMMUNITY LOYALTY PAGE PAGE 4 OF THIS ISSUE OF THE EVENING NEWS

Of course when you want to buy merchandise of any kind you are anxious to patronize a Glendale dealer. When you wish to employ professional skill it is your desire to secure a local man. When repair work is needed it is to your advantage to have the work done by mechanics near home.

- AMUSEMENTS: Glendale Recreation Center No. 15, Col. 8
ART GOODS: The Gift and Art Needlework Shop No. 16, Col. 8
Tregese's No. 15, Col. 8
AUTOMOBILES: Dixie Packard Co. No. 9, Col. 7
Rickenbacker, A. N. Shoffner Prop. No. 5, Col. 8
Jesse E. Smith Ford Agency No. 5, Col. 8
AWNINGS: W. P. Gilliam No. 13, Col. 6
BAKERS: Sauter's Bakery No. 2, Col. 8
BANKS: Federal Commercial and Savings Bank of Glendale No. 3, Col. 2
Glendale State Bank No. 1, Col. 4
BARBER SHOPS: Aldridge Barber Shop No. 7, Col. 7
Palace Grand No. 17, Col. 8
BATTERIES: E. W. Clark Auto Electric Co. No. 13, Col. 7
Pshner Bros. No. 2, Col. 3
Sherman-Bond Auto Elect. Co. No. 13, Col. 8
BEAUTY PARLORS: Barnett System of Growing Hair No. 2, Col. 2
Palace Grand Beauty Shoppe No. 18, Col. 4
CHIROPODISTS: Dr. Herbert Fairs No. 16, Col. 1
CHIROPRACTORS: Dr. C. M. Cagle, D. C. No. 4, Col. 2
Dr. Minerva H. Hawman No. 10, Col. 2
CONTRACTORS: A. L. Baird of Roy L. Kent Co. No. 16, Col. 2
Glendale Tile & Mantel Co. No. 3, Col. 1
DAIRIES: Glendale Creamery No. 15, Col. 1
Jessup Dairy No. 9, Col. 3
DANCING: Pearl Keller School No. 8, Col. 8
DENTISTS: Dr. H. C. Jolley No. 3, Col. 2
Dr. J. A. Kleiser No. 5, Col. 2
DEPARTMENT STORES: Brand Department Store No. 9, Col. 1
Ferber's No. 1, Col. 1
Webb's No. 1, Col. 6
DRAPEES: George J. Lyons No. 6, Col. 1
DRESSMAKING: Alma F. Smith No. 12, Col. 2
DRUG STORES: Broadway Pharmacy No. 11, Col. 3
Jensen's Drug Store No. 15, Col. 7
Park Ave. Pharmacy No. 14, Col. 2
DRY GOODS: Glendale Dry Goods Co. No. 7, Col. 3

This Man Is Doing It And So Can You—In Glendale

TALK about profiteers, read this true story of a Glendale home owner: A barber tired of paying \$45 a month for a four-room vacant house. He saw a place advertised \$50 down and \$50 a month and bought it quick. Today he has a \$250 cash equity in the place he can sell for \$500.

ATTRACTIVE SITE LURE TO MANY LATEST GUTHRIE UNIT GOES FAST

Hill Drive Scenic Delights Draw Visitors; View Most Entrancing

When Harvey Drive, at the east end of Broadway, was opened for travel, Glendale became possessed of a thoroughfare that has since proven to be one of the most popular drives in the city. The scenic delights of Hill Drive, running along the side of the San Rafael hills, had been known to a select few, but it was not until the enterprise of the J. Harvey McCarthy Company opened up an entrance to it from the Glendale.

Favorable Points Appeal to Purchasers in No. 7 Tract, Says Owner

A number of buyers have already purchased lots in Charles B. Guthrie's No. 7, lying along Kenneth road from Allen to Linden avenues, is the report from his main office, 110 West Broadway. "We haven't had No. 7 on the market more than a week," says Mr. Guthrie, "but already a good proportion of the twenty-two lots are gone. We will sell out the rest in a few days."

LOCAL STATISTICS

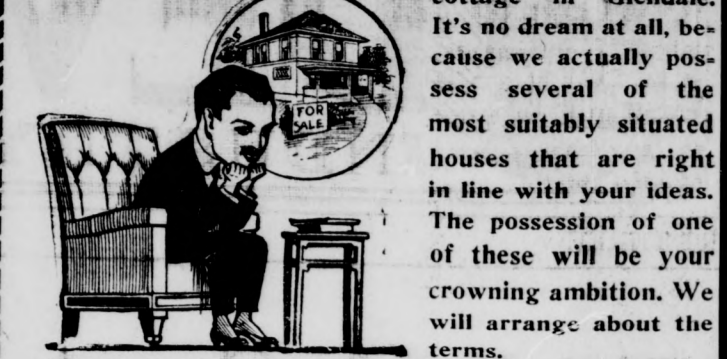
Table with columns for various statistics: Population 1910, 1920, Per cent of increase, Area in square miles, etc. Includes sub-sections for Building Permits (1920, 1921, 1922, 1923) and Schools.

PEP, INITIATIVE AID PLUCKY PAIR

Husband and Wife, by Hard Work and Economy, Find Road to Wealth

On the twentieth day of July, 1922, there arrived at a certain automobile park in the vicinity of Los Angeles, a dust-covered flyover, driven by a young man in khaki who was accompanied by a young woman similarly clad. Both the machine and its occupants bore the marks of long travel and many vicissitudes by the way. As a matter of fact the machine was about "all in," but the young man and his wife had all of the pep and initiative with which they had started from their home in a mid-western state, and to tell the truth, they had nothing else, except the clothes upon their back, \$7.50 in their common treasury, and the aforesaid wreck of an auto.

DREAMING OF THE BEAUTIFUL



All inquiries in regard to Glendale property by non-residents promptly answered

W. WALLACE PLUMB CO. REAL ESTATE—LOANS—INVESTMENTS 229 N. Brand Blvd. Phone Glen. 2954 Exchanges a Specialty

thirty-five. Their room was convenient to the work of both, and they decided to take all of their meals there, as they had the privilege of a kitchenette. This young couple sometimes took advantage of free bus offers and in that way saw many of the surrounding towns, and became so deeply interested in real estate that they not only availed themselves of this method of seeing it, but took street car rides in every direction and became thoroughly acquainted with the opportunities for purchasing.

HADDOCK-NIBLEY CO. Owners and Developers of ROSSMOYNE Glendale's Greatest Restricted Residential Park —Tract office, Doran Street and Glendale Avenue. Phone Glendale 1810 for information. Main offices, Hibernian Building, Los Angeles. WRITE US FOR LITERATURE

WOODLAND PARK PROVES POPULAR

Cream of Verdugo Quickly Snapped Up, Declare Twining & Myers

Woodland Park, the cream of Verdugo Woodlands, is selling marvelously this summer, according to Twining & Myers, owners and subdividers. Only 25 per cent of the tract remains, and having been snapped up by anxious buyers of foothill homesites. The firm is figuring on another tract for week-end cabin sites under the big trees of the Verdugo hills, it also was announced.

Table listing various clubs and organizations: High school students, Evening High School Pupils, Grammar school pupils, Water and Light Connections, Public Library, Car Service Daily—Trains, Luncheon Clubs, Masonic Clubs, Knights Templar, etc.

BAKERSFIELD WELCOME In preparation for a typical Bakersfield welcome for the members of the California Real Estate Association caravan to the state convention in October, President W. W. Kelly of the Kern county board has appointed T. H. Derby as chairman of the caravan committee.

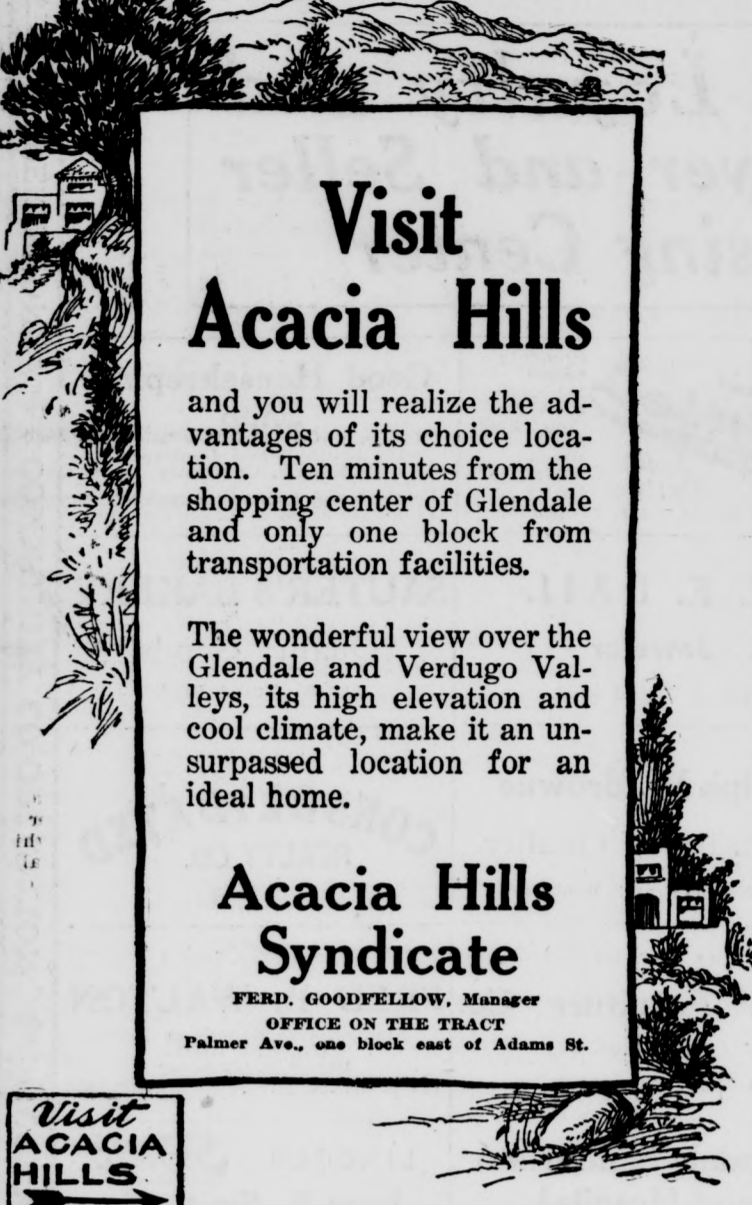
Woodland Park Cream of Verdugo Woodlands With Century Old Oaks and Running Streams Only a Few of These Lots Left Get Yours Sunday At One-Third Less Than Surrounding Property Is Selling For. Representatives at Tract Office, Opechee Way and Canada Boulevard, All Day TWINING & MYERS 227-A South Brand Blvd. Phone Glendale 3011

BARGAIN BIG LOT—GOOD HOUSE Here's a home for the man with a family who wants more than a 50-foot lot. Lot 80x160; lawn, garden, chicken yard; children's play yard, specially equipped, orange, grapefruit, apple and plum trees. Modern house, living room, dining room, bedroom, sleeping porch, kitchen with cement cellar. Up-to-date tent house, with floor and lights, in rear. Ideal sleeping quarters for children. Big garage. Close to grade and intermediate schools. Worth \$6500, but unusual condition permits us to sell for \$5250. About \$2000 cash. GLENDALE REALTY CO. 131 1/2 South Brand Blvd. Phone Glendale 44

DAMAGED

# ACACIA HILLS

"The Coolest Spot in Glendale"



## Visit Acacia Hills

and you will realize the advantages of its choice location. Ten minutes from the shopping center of Glendale and only one block from transportation facilities.

The wonderful view over the Glendale and Verdugo Valleys, its high elevation and cool climate, make it an unsurpassed location for an ideal home.

## Acacia Hills Syndicate

FERD. GOODFELLOW, Manager  
OFFICE ON THE TRACT  
Palmer Ave., one block east of Adams St.



### ADVERTISING SIGN

The Huntington Park Realty Board has finished installing the large advertising signs across the three leading thoroughfares into this city and the bulbs for the formation of the letters at night have arrived. They will be placed in the letters and the lights will be ready to be turned on the first of the week.

### CANAL WIDE ENOUGH

General George W. Goethals declares that there is no need to widen the Panama Canal, as 15,000,000 tons of shipping went through last year and with the construction of one dam "which should have been built in 1908," giving an increased water supply, 80,000,000 tons a year can pass through.

## Publicity Campaign To Advertise Glendale Is Launched In Newspapers

THE advertising campaign that has been planned by the Glendale Chamber of Commerce and that has been launched under the direction of the advertising committee of that organization, starts this week in one of the biggest metropolitan newspapers of the Southland, and will be continued for at least the next six months in three of the leading papers in the United States, papers that will reach an ever-increasing number of those who are already residents of Southern California and of those who come to this part of the country looking for a location where they may make their homes and where they may engage in business.

This campaign represents the attainment of a definite objective that was set before the members of the Chamber of Commerce during the recent expansion drive. When the drive was first planned it was decided to set aside a certain amount of the money received from subscriptions to the Chamber of Commerce as an advertising fund, but this plan was widened in scope until the board of directors considered that greater results in placing Glendale before the world could be obtained if an additional fund, to be known as a service fund, were raised to be devoted exclusively to advertising the city and its advantages as a place for home seekers and for investors who would do their share in helping to build the city of Glendale and who would, in so doing, reap the reward of their own foresightedness.

### Raise Service Fund

The result of the plan to establish a service fund, to be used for advertising Glendale, brought into the Chamber of Commerce a sum in excess of \$8000, with the definite promise, from a number of men who are vitally interested in seeing Glendale progress, that further money would become available as needed to carry on the work.

The campaign now under way will cost around \$7000, and when that sum has been expended it will be the part of wisdom, in the opinion of men who have vision and who are posted on community advertising, to keep on with the advertising that has been started. At first sight, it might appear that such an idea would necessitate the staging of another campaign to secure additional funds for this purpose, but so firm are the directors of the Chamber of Commerce and the members of the advertising committee in their belief in the success of the initial campaign, that they are assured that the raising of more funds to carry on the advertising campaign will be an easy matter, when Glendale business men and citizens generally are shown concrete ex-

amples of the results that will be obtained in swelling the population of the city and in increasing its wealth in every direction.

### Strong Committee

The personnel of the advertising committee of the Glendale Chamber of Commerce is such as to inspire confidence in the immediate success of the campaign. As chairman, W. L. Twining has worked for the up-building of the organization in the face of obstacles and opposition that have been at times discouraging, but he has steadily striven for the adoption of his ideas for advertising Glendale in the only way that could be expected to accomplish results, by an extensive campaign of paid advertising, until today he sees his aims accomplished. City Manager W. H. Reeves, another member of the committee, knows the needs of Glendale as intimately as few other men in the civic life of the town do; L. H. Wilson and P. J. Hayselden, directors of the Chamber of Commerce and men who are numbered among the leading realtors of Glendale, are also in close touch with Glendale's requirements; and to them has been added the John R. Case, Jr., advertising manager of the Walter Leimert Company, subdividers whose expert advice in planning the campaign and in carrying out is expected to add the crowning touch of success to the enterprise.

While the advertisements carried in the three newspapers chosen for the campaign are bound to be of immense importance in insuring its success, the vital factor in that success, the committee asserts, will be the co-operation of every element of Glendale's citizenship, in furnishing the committee with information that can be turned to practical use in the campaign and in backing up the project for advertising the city by liberal subscription to the service fund of the Glendale Chamber of Commerce.

Birds, especially the English sparrow are enemies of locusts.

## PROPER KIND OF PAINT ESSENTIAL

'Save the Surface' Slogan Is Sign Post to Owner in Building Home

Through the columns of the many leading periodicals and in the daily press there have been exhaustive and insistent writings on "Home Keeping," "Home Beautifying" and "Home Preservation." Through these advertisements we have exhausted the English language to impress the minds of the public with the wonderful merits of the products.

One of the most sincere and best slogans promoted for the benefit of home builders, that has been put before the American people for the last three years, is, "Save the Surface and You Save All," the slogan of the National Paint Manufacturers of the United States.

Here in Glendale the slogan is lived up to, for the day when unpainted houses could be found on all sides has gone by, and the activity of paint crews everywhere over town suggests the spirit of the town.

**Insure Homes**  
You may be the owner of an old building that has stood the wear of climatic conditions for years, or you may be contemplating the erection of a new building, and if so, on securing either contract papers for your new building or a deed for the old one your first thought is to secure insurance policies, that in case of destruction by fire there will be no loss. Many times in the transferring of old property, with the deed, the insurance papers are signed and these are looked over and considered an important factor to the closing of this deal that this property will be preserved against any financial loss and that the owner can be reimbursed if such should occur. Or, in case of a new building, through the negligence of some employe or workman during the course of construction, before the foundation is laid, fire insurance should be taken out, that the owner may be protected.

Has the thought ever occurred to you that when this building is finished what insurance you have against the deterioration or the lack of preservation of the many materials you have piled or woven together and that they should be insured against the elements that destroy buildings, such as severe summer heat, winter rains or the spring fogs?

### Employ Expert

In your mind this will seem to be a waste of words, as your contract calls for a painter possibly secured by the general contractor and only secured as being the lowest bidder. The greatest obstacle to the finishing of the building is the lack of precaution on the part of the general contractor to select a contracting painter who really knows what is needed to put on paint or paint materials that will "Save the Surface and Save All."

Running over the columns of the many advertising mediums, one reads of special prices for high grade goods that are many times misleading. This not only applies to painting materials but to all other materials that go into the construction of a building, special sales, odds and ends sales and second-hand sales. It is true many people constructing homes take into consideration the amount of money they have to expend on these structures and use cheaper lumber, cement, plaster, wallboard, in fact, cheap flooring, which is well to consider, but as a final finish all the faults and defects of the material that go into the structure should be preserved by the best grades of the finishing coat.

### Save the Surface

The paint manufacturers of the United States, in suggesting the slogan, "Save the Surface and You Save All," have taken into consideration only those manufacturers who are producing products made to a standard and a quality which those houses represent.

Property owners contemplating refinishing an old house or erection of a new one should get in touch with the more reliable and substantial distributors of paints, just as sincerely as we would secure a reliable and standard fire insurance company, for surely if you "Save the Surface You Save All."

## Pasadena Will Seek Realtors' Convention

High school students have been asked to enter the contest for a song for 1924, Pasadena's Golden Jubilee year, when that city hopes to entertain many conventions, including the state convention of the California Real Estate Association. Mrs. Helen M. Grant is in charge of the contest and will award the prize of \$100.

A tour will be made of the state by Pasadena realtors and business men during the early part of October in their attempt to secure the convention for their city. A quarter will sing the prize song of the contest.

Further preparations are evidenced by the resolution of Carroll Page Field, in which the Pasadena realtors co-operate with the other civic organizations in asking the City Council to build a new civic auditorium in time for the convention, the building to be completed not later than April 1, 1924.

By the end of the summer, approximately 179,000 miles of highway will have been designated as a part of the federal system.

# For Your Future Your Own Home



When you reach old age, as most of us are bound to do, you will want to be securely established.

There is no greater contentment than having your own home, both for your children's welfare and your own. Come—see the many plans for desirable and attractive homes that we can show you.

## Up Go the Buildings

Never before in the history of this country, has there been so much building going on. You see it all over Southern California particularly. Plan now to build that house, apartment, store or garage. We're glad to give you any advice that we can—so feel free to talk over your building problems with us.

When You Build Insist on Having

**BENTLEY'S BETTER Finish BETTER Hardwood Floors BETTER Roofs**

Plans and Free Building Information in Our Up-to-date Service Department

## Bentley Lumber Co.

460 West Los Feliz Road

Glendale, Calif.

## GRANDE VISTA IS DRAWING BUYERS

Range of Lot Sizes, Terms of Sale, Attractive To Investors

Grande Vista, "the subdivision de luxe," is attracting a high class of buyers, reports H. N. Landon, 213 West Broadway, who is developing the tract.

"Our wide range of lots, all the way from 60x160 feet to the proportions of villa sites, offers the prospective buyer every possibility for selection," says Mr. Landon, "while our prices of from \$1,750 up indicate to anyone who knows Glendale values that here is the place to buy for profit, as well as to establish a home amid the most beautiful and refined surroundings."

"One feature of the many we are developing here for the cultured class of home-owners who are to occupy Grande Vista, is an ornamental parkway running through the tract, laid out in beautiful trees and shrubs. Other improvements, fully paid for, include gas, water, electricity, curbs, sidewalks, curving drives, street lights, together with building restrictions of from \$7,500 to \$15,000."

"Chance for Profit" "I believe I am offering in Grande Vista the best values I have ever been able to pass on to the public. I want Glendale people to make the money that is to be made in Grande Vista, by buying now."

The tract is approached by driving north on Central avenue to Kenneth road, west on Kenneth to Grand View avenue and north on Grand View to the tract, which is at Mountain street.

Mr. Landon is selling these lots on reasonable terms, particularly reasonable when it is considered that they are practically brand new frontage—for about January 1, 1924, Grand is to extend out Mountain street to Burbank, it is reported, connecting that city through Glendale to Pasadena.

### FAILS TO SIGN BILL

Governor Friend W. Richardson failed to sign assembly bill No. 1100, authorizing insertion of arbitration clauses in contracts for public work; the bill, therefore, is dead.

We Are Still in Business, Haven't Gone Out of Business, Not Going Out of Business, Working Nights to Take Care of Our Present Business. Expect to Continue in Business Until Glendale Is 200,000 Population.

**CHARLES B. GUTHRIE CO.**  
REALTORS  
110 W. Broadway. Phone Glen. 1640

## THE BEST BUY ON SAN FERNANDO ROAD

187 ft. corner at 123 dollars per front foot.

See A. N. Fairchild, Exclusive Agent  
1725 South Brand Boulevard  
Tel. 993-J. Res. 3018-W

**PUSHING GIANTS** **RACING CHART** **\$1 GAS BILL** **STORE MANAGER SLASH**

**HERE'S GOOD NEWS**

stitutions," Asserts Two Armed Bandits Enter Rival ex-Judge Ransom East 42d Street and Escape

**YOU CAN NOW BUY LOTS IN BEAUTIFUL CASTLE HEIGHTS**

ADJOINING BRAND CASTLE—  
The Show Place of Glendale Sub-Division De Luxe

Lots—50x165—60x165—64x170

**\$1750 to \$4250**

Terms—\$500 Cash—2% per Month

Every improvement paid for, nothing omitted: Water, Gas, Electricity, Curbs, Gutters, Sidewalks and the best Macadam pavement.

**RESTRICTIONS OF \$7500 AND \$5000**

The location at Mountain street and Western avenue, directly adjoining Brand Castle, is ideal. One block above Tenth Street, three blocks above car line.

A magnificent panoramic view from Eagle Rock on the East, to Lankershim on the West; the valley in the foreground, with the beautiful Griffith Park Hills for a relief.

The prices are so reasonable that they compel attention from anybody with the means to afford a real home amid beautiful surroundings.

Foothill property is commanding fabulous prices. People have come to realize that there are only a limited amount of desirable homesites of this kind, and the next five years will make this fact more obvious.

Lots in Castle Heights Will Be Worth From \$5,000 to \$10,000 Come out today and see it. Tract Office open all day Sunday.

Drive out San Fernando Road or Kenneth Road to Grandview, up Grandview to Brand Castle, and look for our sign on Mountain Street adjoining Brand's Golf Course. Orange and black streamers on tract.

**HAMLIN & HEPBURN**

203 West Broadway Glendale, Calif. Phone Glen. 996-J

**CLARA PHILLIPS DENIES**  
Says on Way to Will Clear Up

**Brooklyn Man Held on Bigamy Charge**  
Frank Caylor, a salesman, of 2655 East Broadway street, Brooklyn, was held yesterday on a charge of bigamy.

**Woman Hurt When Auto Rums Onto Sidewalk**  
A 30-year-old woman was injured today when her automobile ran onto the sidewalk.

**30 Days for 'Who Ran'**  
Mrs. Kate Francis

COMMUNITY CO-OPERATION COMMUNITY CO-OPERATION COMMUNITY CO-OPERATION COMMUNITY CO-OPERATION COMMUNITY CO-OPERATION

COURTEOUS TREATMENT WINS FRIENDS

COMMUNITY LOYALTY

Giving Good Service Is the Practice of Every Successful Merchant

Citizens Endorse a Movement to Foster Community Loyalty and Sanction a Practical Business Co-operation Between Buyer and Seller In the Building of a Bigger, Better Glendale Merchandising Center

WORKING TO-DAY FOR TOMORROW FERBER'S The Store of the Town 108 South Brand Blvd

Glendale Feed & Fuel Company R. M. BROWN, Prop. Hay, Grain, Coal, Poultry Supplies and Seeds

Glendale Tile and Mantel Co. JOSEPH FORTUNATO, Prop. Office, 197 East Doran St.

Glendale Groceries J. HERBERT SMITH SEYMOUR G. SMITH GLENDALE 167 116-118 North Brand Boulevard

MOLEN'S Art Reed Shop Everything in Reed Made, Repaired, Refinished City 417 East Broadway

GEORGE J. LYONS ARTISTIC DRAPERIES Phone Glendale 2900-W No. 11 Court Shops, 211 E. Bdw.

Jewel City Plumbing Company "Quality First" Glendale 2779 526 E. Broadway, Glendale, Calif.

De Luxe Upholstering Co. Mrs. Overstuffed Furniture BUY DIRECT FROM FACTORY Call Garvanza 5139 for Estimate

Brand Department Store POPULAR PRICED STORE Phone Glen. 2652-W 232-235 N. Brand Blvd., Glendale

WMA PFEIFER CYCLE CO. Lawn Mower Repairing 110 S. Maryland Glendale 49

BENTLEY LUMBER COMPANY (Incorporated) Lumber and Building Material Merchants

D. L. GREGG Hardware Company EVERYTHING IN HARDWARE 107 N. Brand Blvd., Glendale, Calif.

Glenn B. Porter Furniture USED 124 W. Broadway Phone Glen. 2423-J—Estimates Given Linoleum Our Hobby

Downing & Cox NURSERY Seeds — Fertilizer Phone Glendale 1030 118 S. Brand Blvd. Glendale, Calif.

Glendale Creamery Co. Producers of Milk, Cream, Buttermilk 755 W. Doran St. Phone Glen. 154

Dr. Herbert Fairs FOOT SPECIALIST Surgical Chiropodist 102 South Maryland Avenue Glendale, Calif

R. E. Kirkland G. C. McConnell "Home Service at L. A. Prices" Builders Hardware and Supply Co.

BARNETT SYSTEM OF GROWING HAIR 221-A West Broadway, Glendale Phone Glendale 2881

DR. H. C. JELLEY DENTIST Phone Glen 1781 Room 108, 108 N. Brand, Glendale

"I CAN PROVE IT" DR. C. M. CAGLE CHIROPRACTOR Suite 20, Cole & Damarell Bldg. Glen. 1795 103-A N. Brand Blvd.

Dr. Joseph Albert Kleiser DENTIST McElroy Building Hours, 9 to 6 Ph. Glen. 1335 107 1/2 S. Brand Blvd., Glendale, Cal.

Dolberg's FINE PORTRAITS GLENDALE CALIF.

L. G. Scovern Co. UNDERTAKERS Brand Boulevard at Acacia Street Glendale, Calif.

Photographs E. A. WORLEY COMMERCIAL and PORTRAIT Phone Glen. 1787-W. 419 E. Bdw.

Glendale Furniture Store 606-608 East Broadway, Glendale Hours, 9 to 5, and Monday, Wednesday and Friday Evenings Phone Glen. 764

Minerva H. Hawman —CHIROPRACTOR —MASSEUSE 221-A W. Broadway, Glendale, Cal.

Sara E. Pollard Insurance, Fire, Auto, Rentals, Burglary, Business Profits, Etc. 125 W. Broadway Glendale, Calif.

ALMA F. SMITH —DRESSMAKER —and FURRIER 114 W. Broadway ... Glendale, Cal.

Glendale Upholstering Company ESTIMATES FURNISHED 1421 Valley View Road Free Delivery Phone Glen. 152

Park Ave. Pharmacy C. A. Parker & O. H. Kohnke EASTMAN KODAK AGENCY Prescription Specialists 1023 S. Brand Blvd., Cor. Park Ave.

Goode & Belew CLEANERS & DYERS RAY E. GOODE O. H. BELEW Glendale 364 110 East Broadway

A. L. BAIRD Of Roy L. Kent Co., Established 1910 REAL ESTATE, INVESTMENTS Phone Glen. 408 130 S. Brand Blvd.

Wm. Hunter, Prop. Phone Glen 855 Glendale Paint & Paper Co. Wall Paper and Paints 119 South Brand Boulevard

Philadelphia, Willard, Exide PSENNER BROS. AUTO ELECTRIC COMPANY Automobile Electricians Tel. Glen. 452 — 601 S. Brand Blvd.

Telephone Glen. 964-W MILLS MANUFACTURERS - DESIGNERS FINE FURS 133 S. Brand Blvd., Glendale, Calif.

Glendale Bootery "SHOES THAT SATISFY" 221 N. Brand Blvd., Glendale, Calif. Phone Glendale 490

THE Glendale Hardware COMPANY Hardware, Plumbing, Paints 601-603 East Broadway

Glendale 2012 LEWIS C. DAVIS —WINDOW SHADES —LINOLEUM, RUGS —CURTAIN RODS 210 East Broadway, Glendale, Calif.

J. HOLZMAN M. HOLZMAN "STORE OF SERVICE" Glendale Dry Goods Company Dry Goods, Furnishings, Ready-to-Wear 115 E. Broadway, Glen. 1946

"We Liquidate Your Piano Troubles" The Piano Exchange (Incorporated, Glendale Branch) A PIANO CLEARING HOUSE, NEW AND USED PIANOS 112 W. Broadway, Glendale, Calif.

Glendale 421-W R. W. Jessup Dairy RAW MILK GLENDALE, CALIF.

Valley Plumbing Supply Co. WHOLESALE and RETAIL Six Fixtures Complete to the Rough, \$140.00 A-Grade Fixtures. 610-12 S. Brand

Geo. A. Whitaker THE DRUGGIST Broadway Pharmacy East Broadway and Kenwood Phone Glen. 1902

Favorite Ranges BEST IN U. S. GLENDALE FURNITURE STORE 606-608 East Broadway

Palace Dry Cleaners THE BEST IN TOWN Ladies' Work a Specialty Give Us a Trial Glendale 36-J 2922

Wilson-Bell Hdw. Co. Store No. 1 227 North Brand Boulevard, Gl. 4253 Store No. 2 1738 S. San Fernando Road at Brand Boulevard Phone Glen. 2943

TREGEA'S (Tree-Gays) Art and Gift Shop Harvard Street Off Brand Phone Glen. 2890 Glendale, Calif.

D. Ripley Jackson ALWAYS BOOSTING FOR GLENDALE Coghlin Electric Co. Wiring Appliances, Lighting Fixtures P. E. MAXWELL—M. E. MAXWELL Phone Glen. 1212 310 E. B'dway Glendale, Calif.

Glendalians Should Have High Ideals for City

Standing alone upon the empty stage the magician waves his hand and there appears beside him where before was only space, a tall tree, with spreading branches and green leaves, an object of beauty. And the breathless audience marvels at the transformation his magic has wrought, while here and there is one who has seen the act before, who anticipates every move of the magician and smiles at the astonishment of his neighbors.

It is almost as though some Master Magician had waved his wand over Glendale and there stood a city of noble proportions, beautiful of form and fair of fame, where only a typical, western, sun-baked village stood but a moment ago. Some are still startled by the transformation, while others, wise in the knowledge of magic, knew what was coming and were not surprised when the denouement took place.

Those who have studied the extraordinary increase in Glendale's population and prestige, can name several contributing causes, but the greatest of these and the one most often mentioned is Community Loyalty. Certain it is that no city could have undergone such a transformation as that which placed Glendale among the important cities of the country without great devotion to her interests on the part of her officials, business men and citizens.

And since Community Loyalty has done so much for Glendale in the past, why should we not cultivate this sentiment more and more? Why should we not have an abiding faith in the future and in the destiny of Glendale? Why should we not have a high conception of what Glendale can and will be and then use all our means to carry out this ideal? There are so many reasons why we should serve Glendale, why we should feel a peculiar affection for her matchless setting among the hills, her pure air, her romantic origin and her incomparable history.

Outside forces may have contributed to some extent in the building of Glendale, but Community growth always depends upon the character and action of the individuals who make up the community, so it is to the citizenship we must look for further progress.

A writer defining patriotism, said, "The sentiment extends so as to embrace the community, town, state, country. The more intelligent one is the broader is his patriotism." The need is for the individual citizen to realize this, to know that his co-operation is needed in speaking good of Glendale, in encouraging every movement for the good of the community, in refraining from the criticism that comes so easily, in spending his money in Glendale.

"The noblest motive is the public good," Virgil said, and when we all subscribe to this sentiment our Community Loyalty will lift Glendale to her proper place among the stars.

GLENDALE STATE BANK 4 Per Cent on Savings 109 E. Broadway, Glendale Real Estate and Insurance.

RHOADES & SMITH ATTORNEY-AT-LAW 102-A East Broadway Phone Glen. 1725

Federal Commercial and Savings Bank OF GLENDALE Glendale's Own Bank. Watch for Opening Date

Hardwood Floor GLENDALE HARDWOOD FLOORING CO. 815-J Phone Glen. 557 304 East Broadway

G. H. WENDE 102-A East Broadway Phone Glen. 1725 Order It From the Sanitary Grocery Free, prompt delivery to any part of the city. 244 N. Brand Blvd., Ph. 3212

ON another page of this issue of The Glendale Evening News is published a classified index of the names of firms and persons whose names appear on this page. The page, with a new editorial on Community Loyalty and Community Co-operation will be published once a week. Cut the page and the classified index out and use them for reference.

Webb's Brand at Wilson Department Store

Stewart's Cash and Carry Grocery COFFEES AND TEAS 318 East Broadway, Glendale, Calif.

Charles McDuffee Cooper's Underwear—Hendan Shirts, Emerson Shoes—Thermo Sweaters, Hoteproof Hosiery—Hats and Caps Broadway at Maryland Glendale 2924-W. Glendale, Calif.

ED RADKE Optometrist 109 1/2 South Brand

SHOES! Exclusive Ladies' and Children's Shoes—Latest Novelty—Popular Prices M. & L. BOOTERY Style Leaders in Footwear Next to Robinsons Men's shop 116 A S. Brand

Window Shades Linoleum C. F. GRAAS CO. Phone Glen. 3225 119 S. Orange

Your Credit Is Good As you buy your home so shall you buy your furniture — on the monthly payment plan. Open an account here and pay later. No interest charge. New England Furniture Co. 281 South Brand Blvd.

ROBINSONS 114 S. Brand Blvd. Glendale's Largest and Finest Store for Men & Boys Clothing, Hats, Furnishings

THE Glendale Book Store CLYDE H. BOTT, Prop. Picture Framing, Kodaks and Supplies, Books, Stationery and School Supplies Phone Glen. 219. 113 S. Brand

Send It To The Laundry Glendale Laundry Co. Corner Arden and Columbus Aves. Phone 1630

Mr. and Mrs. J. E. Phillips 202 North Brand Phone Glen. 800

Glendale Lumber Co. 314-328 North San Fernando Road GLENDALE, CALIF.

Awnings and Tents Spanish and Egyptian Colors W. T. GILLIAM, Manufacturer Phone Glen. 2012 210 E. Broadway

SINGER Sewing Machine Shop Electric and Drop Heads Machines Rented and Exchanged All Makes Repaired Easy Terms 223 E. Broadway

Glendale Electric Co. E. R. NAUDAIN V. V. NAUDAIN 132 North Brand Blvd., Glendale The Eyes in Relation to the Nervous System

Dr. Warren Z. Newton OPTOMETRIST Eye Strain Specialist Ph. Glendale 1294-J 121 N. Brand

Fanset DYE WORKS None Better JOHN H. FANSET, Proprietor Glendale Office 213 East Broadway Court Shop No. 1 Phone: Glendale 155

E. E. DAIL Jeweler 136 N. Brand Blvd.

Ralph W. Browne Portraits of Quality 215 North Brand Boulevard Phone Glendale 2753

Trice Furniture Co. 118 West Broadway GLENDALE, CALIF.

Glendale Sanitarium and Hospital PHONE GLENDALE 2 For the Convenience of Both Surgical and Medical Cases

Betty Ellen SHOP FOR PARTICULAR WOMEN 215 S. Brand Blvd., Glendale 1381-W Glendale, Calif.

THE Aldridge Barber Shop MILLARD ALDRIDGE, Prop. Good Service, Best of Hair Tonics We Make Hair Cutting a Specialty. 144 S. Brand Boulevard, Glendale

Walker Jewelry Company Established 1911 (Official Watch Inspectors P. E. Ry) 132 W. San Fernando Blvd, Burbank 116 East Broadway, Glendale Glendale 1077

Packard DIXIE PACKARD CO. W. H. Daniel, Mgr. 510 East Broadway, Glendale LET US DEMONSTRATE

The Four-Wheel Drive Rogers Una - Drive Motor Truck Corp. Glendale 1838 117 W. Harvard Executive offices and works Sunnyvale, California

R. A. Jones A. A. Jones Phone Glen. 1077 Jones Garage Guaranteed Repair Work Autos and Trucks 510 East Broadway, Glendale

Independent Lumber Co. Inc. Lumber and Building Material Phone Glendale 2510 and 2511 Retail yards, San Fernando and West Doran Street Tujunga and Alhambra

Henry M. Willard Emil W. Cizek E. W. Cizek Auto Electric Co. Service Station for Willard Batteries Auto Electricians 510 East Broadway, Glendale 5 Brand at Colorado, Phone Glen. 5

LYONS Suits and Shirts Made to Your Order Get new pants to your old coat and vest We Match Them Any Pattern—Bring Sample or Mail us 125 1/2 North Brand Blvd.

SHOP IN JENSEN'S PALACE GRAND SHOPS BUILDING Jensen's DRUG STORE Phone Glendale 3000

Palace Grand Beauty Shoppe One of the finest parlors in California, equipped to turn out the very best work MARY ELSE, Mgr. Phone Glen. 1800 for appointments

Good Housekeeping Shop 140 South Brand Boulevard Glendale, California Kitchen and Laundry Furnishings Phone Glen. 530 D. L. Larkin, Mgr.

SAUTER'S BAKERY "Quality Goods" 519 So. Brand Blvd.

CONSOLIDATED REALTY CO. Phone Glen. 1176-J

FRED B. WALTON Stetson and Borsalano Hats PHOENIX HOSE Better Men's Wear 148 S. Brand Blvd. Glendale

LINCOLN Ford Jesse E. Smith Co. Authorized Dealers 115-125 West Colorado Street Telephones—Glendale 432—433—434

Exclusive Dealer Esque Rock, Burbank, Tujunga and La Crescenta A. M. SHOPPNER RICKENBACKER "A Car Worthy of Its Name" 107 E. Colorado Glendale, Cal.

Woodson's Foto-Craft Shop Kodak Finishing 214 1/2 N. Brand Blvd., Glendale, Cal.

PEARL KELLER SCHOOL OF DANCING and DRAMATIC ART Pearl Keller Brattain, Director The Children's Teacher 109-A N. Brand Blvd. Glen. 1377

No Aerial or Ground; No Wires; Play While Riding Auto Portable Long Distance Sets, Console Table Sets, Automobile Sets Radio & Electric Co. Mfrs. and Designers of Radio Sets 211 East Broadway. Glendale, Cal. See our salesman for the best values

YALE BROS. REALTY 249 North Brand Boulevard Phone Glen. 1563

Phone Glendale 2275-W Hoffman & Pixley Plumbing and Gas Fitting Jobbing, Estimates Furnished 207 N. Glendale Ave., Glendale, Cal.

Glendale 1249-J "KIRK HAS IT" C. H. Kirkman Co. COMMERCIAL AND FANCY STATIONERY, OFFICE EQUIPMENT, SCHOOL SUPPLIES— 141 South Brand Blvd., Glendale, Cal.

Sherman-Bond Auto Electric Co. AUTOMOBILE ELECTRICIANS GOLD BATTERIES 426 S. Central Avenue, Glen. 1893-J Service Car

The Paris Shoppe Style without extravagance, Exclusive Women's Apparel Furnishings and Millinery 223 N. Brand Blvd., Glendale, Calif.

Bowling A game a day keeps you frisky and gay. Glendale Recreation Center Join the club for billiards "BUY A GIFT" The Gift and Art Needlework Shop Gifts Novelties Needlework Baby Outfits Jensen's Palace Shops 133 North Brand

Palace Grand Barber Shop Glendale Boulevard 3085 We invite you to visit our modernly equipped and up-to-date shop for hair cutting and ladies' and children's hobbory in all latest styles. Individual service in combs, brushes and Linens.

COMMUNITY CO-OPERATION COMMUNITY CO-OPERATION COMMUNITY CO-OPERATION COMMUNITY CO-OPERATION COMMUNITY CO-OPERATION



**GLOBE BUILDERS SUPPLY CO.**

We Absolutely Guarantee to Meet and Beat All Prices and Values on Building Materials  
GENUINE INLAND LINOLEUM Reg. \$2.00 Sq. Yd. at Half Price \$1.00 Sq. Yd.  
**SASH & DOORS**  
5 Panel Doors \$3.90  
One Panel Doors \$3.45  
Do. 5 Sash Doors \$5.15  
Medicine Cabinets \$3.75  
Pratt & Warner Ironing Bd. \$7.00  
2-dx-4 Pair Casings \$2.50

**Goodyear Garden Hose, 9c Foot**  
25 and 50 Ft. Lengths Complete with Couplings,  
Diamond Nozzles 70c Each  
BIG CUT IN PRICE on GENUINE

**SCHUMACHER PLASTER BOARD Only \$32.50 Thous.**

48-Inch Wide—All Lengths Edges and One Side Perfect  
Revealers of Imperfections  
First Grade Wallboard \$30 Thous.

**PAINT, \$1 per Gal.**  
SPECIAL LOT ONLY \$1.00 GAL.  
Standard House Paint, \$1.75 Gal.  
Regular \$3.00 value, all colors \$1.75 Gal.  
House or Shingle Stain, 50c Gal.  
Lead, Oil, Turpentine, Glass,  
Screen Wire, Ladders, Nails and  
Brackets at Wholesale Prices,  
Complete Line of Painters' and  
Paper-Hangers' Supplies  
Big Cut in Price on Pure Raw or  
Boiled Lined Oil, \$1.40 a Gal.  
We Carry a Complete Line of  
"MURPHY" DA-COPE  
MOTOR CAR ENAMELS

**"HOSE-OFF"**  
For Removing Paint, Varnish,  
Grease & Oil with water, \$2.50 Gall.  
**Wallpaper, 1c a Roll**  
Wh. Border to Match at 10c Yd.  
Beautiful Flowered Patterns at  
Half Price

**Window Shades**  
36x6 and 38x6 50c Each  
TABLE OIL CLOTH, 35c YD.  
BROOMS, REG. \$1.00, NOW 75c

**'Hygrade' Tungsten Lamps**  
From 10 to 50 Watt, only 30c each  
Sockets only 25c each  
Lead, Oil, Turpentine, Glass,  
Dry Cord only 25c Ft.  
Drop Cell Batteries, Fuse Plugs,  
Double Sockets, Friction Tape  
ABSOLUTELY PERFECT  
First Grade Red or Green  
**SLATE ROOFING**  
3-Ply, Reg. \$3.25, now \$2.75 roll.  
Complete with Nails and Cement.  
Light Weight Roof Covering  
50c a Roll

**Awnings Made to Order**  
We Furnish Expert Painters,  
Paperhangers and Decorators.  
Estimates Carefully Given.  
All Goods Guaranteed.  
FREE DELIVERY  
Mail Orders Filled Promptly

**LOS ANGELES PERMITS**  
If the ratio for the first two weeks of July is continued for the balance of the month, Los Angeles' building permits issued during the seventh month of 1923 will total \$12,000,000.

**DIVIDENDS PAID BY GAS COMPANY**

**Holders of Preferred Stock Get Second Quarterly Payment in Year**

The Southern California Gas Company this week mailed quarterly dividend checks to holders of its six per cent cumulative preferred stock. This dividend not only marks the mid-year but is in addition the second dividend to stockholders since the company first offered its preferred stock to the public the first part of this year.

In connection with the issuance of dividend checks some interesting information concerning the rapid increase in consumers, both in this city and over the entire system of the company, was made public.

At the present time there are 9845 consumers in the city of Glendale; an increase of 1158 since the first of the year and an increase of 2352 since June, 1922, a year ago. The entire San Fernando Valley has at present 17,903 gas consumers, an increase of 4635 during the last twelve months, and an increase of 2579 since January 1, 1923.

On June 30, 1923, the Southern California Gas Company had over its entire system a total of 106,570 consumers. In the month of June alone, 2,012 consumers were added. This figure, together with the 20,162 increase since June, 1922, and the 10,993 increase since the first of this year conveys some idea, not only of the company's rapid growth, but of the growth of the territory served.

Another sign of this growth is the number of industrial consumers added to the system. Six months ago the company served 272 industrial consumers. Today there are 341 industrial consumers, an increase in six months of sixty-nine manufacturing concerns using gas as a fuel. A splendid indication that the southland is growing industrially as well as in population.

**LAW IS REPEALED**  
The Home Builders law of North Dakota has been virtually repealed by an act of the 1923 legislature transferring to the industrial commission of that state, for liquidation, the affairs of the organization.

**Offer Suggestions About Method To Be Followed In Building Contracts**

**THE BENTLEY LUMBER COMPANY**, situated at 460 West Los Feliz road, advocates the use of plans and specifications, so that every detail of construction may be in black and white before a plank of lumber is on the premises or a joist in place.

"We are constantly preaching to our customers and many friends the use and value of our up-to-date Plan Service, such as this company renders the home-builder," says Donald R. Gillin, service manager. "This company has saved its customers thousands of dollars annually, by the intelligent use of this service."

"The following suggestions for the owner, the contractor, the material dealer and for the financial safety of those who expect to build, are compiled by the Building Material Dealers' Credit Association, 815 South Hill street, Los Angeles. These suggestions are written in pamphlet form and are for free distribution. Copies may be secured by application at any first-class material dealer's office, at the plan department of the Bentley Lumber company or at the offices of the credit association mentioned above.

**Tells of Lien Law**  
"One of the good effects of the mechanics' lien law is that it makes it urgent for the owner to insist on dealing with reputable, high-class contractors; because bills for construction labor and construction materials are filed against the property where used, and constitute a lien which can be foreclosed the same as a mortgage. If the bills are not paid by the contractor, even though you have previously paid the contractor in full."

**Insure Against Fire**  
Suggestion No. 5—Insure your building in full against fire during the construction period. It is good business, also, to insist that the contractor carry public liability and workmen's compensation insurance, since it strengthens his financial position.

**Look After Finances**  
Suggestion No. 3—Finance your building project completely before beginning work. If the owner will require a loan for this purpose, he should make advance arrangements with a responsible loan association, mortgage company or bank. They will require that the mortgage be recorded before the building contract is recorded and before any work is done or any material delivered upon the property. They will require that the title be examined down to date, thus safeguarding the owner himself by revealing any hidden defects. You cannot get a building loan after the building is started. You must record your loan papers in advance, or wait until lien rights have lapsed after completion.

**Will Loan Money**  
As it is now, the loan company will advance money before completion, knowing that the owner can obtain credit on the basis of the property offers through lien rights. A comparatively poor man can therefore, build for himself a home representing a value of much more than the lot and the cash he has, because he can get a building loan in advance.

**Will Loan Money**  
The first mechanic's lien statute was arranged in 1791, at a meeting attended by Thomas Jefferson and James Madison, arising from a desire to establish, improve and build up as speedily as possible the city of Washington, and to enable contractors to confidently proceed with construction work without fear of fraud by the owner.

**GIVES REALTY LAWS**  
Real estate brokers who are doubtful as to what the provisions of the new real estate amendments are may have their questions answered by consulting the sixteen-page booklet just issued by the California Real Estate Association—News Department, Los Angeles. In addition to Commissioner Edwin T. Keiser's interpretation of the amendments, a history of the law is given by Legislative Chairman Wm. H. Akin, and comments on the law are made in an introductory letter by President Frazier O. Reed. Copies of the booklet are being distributed free from the office of the association.

**Will Loan Money**  
As it is now, the loan company will advance money before completion, knowing that the owner can obtain credit on the basis of the property offers through lien rights. A comparatively poor man can therefore, build for himself a home representing a value of much more than the lot and the cash he has, because he can get a building loan in advance.

**BARBEQUE LURES CROWD TO TRACT**

**Film Stars Present to Help Entertain Huge Throng Visiting Glenoaks**

Approximately 2,000 persons were present at the barbecue held recently at Glenoaks by the owners, including the largest assembly of motion picture notables ever gathered together at one subdivision outing.

Features of the day included addresses by City Manager W. H. Reeves, of Glendale, and by Otis Harlan, who spoke of several of the pictures in the making at the Vitagraph Studios and introduced a number of the motion picture celebrities who attended the event.

Cullen Landis, Otis Harlan, Marion Harlan, Helen Kiser, Bill Dwyer, "the greatest single-handed villain in the pictures," Iris Ashton, Marie Campbell, Helen Walton and Aggie Herring were among those present.

Nearly fifty players in all were present, most of them being from the Vitagraph Studios, where their new super-production, "The Pioneer" is now in the making. Several of the sets were taken at Glenoaks, according to Duane H. Wagar, production manager.

On the entertainment program were a troupe of Spanish musicians and dancers, and a trio of Swiss yodelers.

A feature of the day was the permission given visitors to the tract to help themselves to the apricots, with which the trees in the glen were loaded. Hundreds of visitors availed themselves of this invitation and came prepared, with boxes and bags in which to carry home the ripe, golden fruit. The barbecue dinner was prepared and served by Fred Ramirez, famous barbecue chef. Fred was kept busy serving beans and sandwiches till seven o'clock in the evening, long after the barbecued meat had given out, when automobiles were still coming into the glen, although the barbecue had been called for 1 o'clock.

**Now is your opportunity to secure a homesite in the most exclusive residential section of Glendale**

**Here's Good Tip! Clean Lots For President's Visit**

**A RESIDENT of Glendale**, who has served in official capacity for many years, gives a hot tip to the Chamber of Commerce and city administration relative to President Harding's tour through Glendale:

"What is he and our other members of the official party going to think," muses this Glendale enthusiast, "when he sees the vacant lots with all of the volunteer weeds?" It is suggested that lot cleaners get on the job Monday morning and any property owner not desiring to do the work of eliminating the seedy looks of the city be permitted to pay a municipal crew.

pared and served by Fred Ramirez, famous barbecue chef. Fred was kept busy serving beans and sandwiches till seven o'clock in the evening, long after the barbecued meat had given out, when automobiles were still coming into the glen, although the barbecue had been called for 1 o'clock.

According to Chef Ramirez, "Glenoaks is the most beautiful spot I have ever given a barbecue in. Never did I see so many great big trees. And cool, too. My helpers work hard and fast when serving barbecue dinners, and they were grateful for the fine cool breeze. I'd like to own a home in Glenoaks."

Chef Ramirez has served barbecue spreads up and down the Pacific coast for the past fifteen years, and the officials of the Frank Meline Company, who are sales representatives for the subdivision, consider his recommendation a sincere tribute to the beauties of this picture spot.

**CASTLE HEIGHTS LOTS SELL FAST**

**Foothill Property Appeals To Homeseekers, Says Tract Subdivider**

Lots in Castle Heights are selling very briskly for such high class property, according to E. D. Hamlin, of Hamlin & Hepburn, subdividers, 203 West Broadway.

"A number of our choicest lots still remain, however," says Mr. Hamlin, "and these we are confident will shortly be worth from \$5,000 to \$10,000 each."

The Castle Heights property lies just west of the L. C. Brand estate and castle, "Miradero," on Mountain street, and is approached by driving up to the end of Grand View avenue and turning west, where the tract signs and orange and black streamers will guide the way.

Castle Heights is one block above Tenth street and three blocks from the Pacific Electric cars. Practically every lot in the tract offers a magnificent panoramic view of the San Fernando valley, from Eagle Rock on the east to Lankershim on the west, with the Griffith park hills to the north.

"The prices we have placed on these lots are so reasonable for this class of property that they are attention-compelling," Mr. Hamlin says. Lots sizes 50x165, 60x165 and 64x170 feet are being offered from \$1,750 up, with terms of \$500 down and 2 per cent per month.

All improvements are paid for, including water, gas, electricity, curbs, gutters, sidewalks and the best macadam pavement, while restrictions run from \$5,000 to \$7,500.

"We had an opportunity to buy

**Plan Golf Meet for Realtors at Session**

A realty golf tournament limited to delegates to the nineteenth annual convention of the California Real Estate Association will be held on Sunday, October 14, on the Del Paso Country Club course at Sacramento.

This announcement to the members of the state association was made today by A. R. Galloway Jr., chairman of the convention golf committee of the Sacramento Realtors' Association, the host board.

"The Sacramento association is going to offer a handsome and perpetual trophy, known as the Sacramento golf cup," Chairman Galloway said in a statement to California Real Estate. "We have written to the 100 realty boards in the state for the names of their golf players, and these lists are being submitted. Play will be arranged by handicap and therefore any player is eligible. We will communicate with the individual players upon receipt of their names and will guarantee to have a very large percentage of them in Sacramento for the state real estate convention."

Accordingly, all realty boards in the state are urged to supply A. R. Galloway Jr., 817 J street, Sacramento, with the names of their golfing members.

**FURNITURE BIDS**  
Bids will be received on Tuesday, July 31, by the Glendale Board of Education, 107 1/2 South Brand boulevard, for school furniture for the various school buildings now under construction. Richardson D. White, superintendent of schools, has been instructed by the board to prepare a detailed list of furniture needed, with specifications.

The Castle Heights tract at a price such that we could sell it and enable all buyers to make good profits if they care to resell."

**New Floors Laid Old Floors Scraped and Refinished**

SERVICE HARDWOOD QUALITY IN FLOORING SATISFACTION FLOORING

**GLENDALE HARDWOOD FLOORING COMPANY**  
304 E. Broadway Glendale 557  
Res. Phones: Lincoln 4807; Gl. 815-J

**MONDAY SPECIAL**  
COME IN AND GET YOUR PINT CAN OF

**FREE HARRY MOORE CO., Inc. FREE**

**SUNSET PAINT PRODUCTS**

304 E. Broadway Glen. 328  
We Carry a Full Line of  
Also KYANIZE—and WALL PAPER as well

**GRANDE VISTA**



**Now is your opportunity to secure a homesite in the most exclusive residential section of Glendale**

Located in the Foothills JUST WEST OF BRAND'S ESTATE

—Commanding a view of the celebrated estate and inheriting the value and prestige that goes with being located in close proximity to property of this nature. Only 2 minutes' drive to Sunset Canyon Country Club and Golf Course.

**A Very High Class Dwelling**  
will be started the coming week on one of the beautiful homesites we have just sold—and plans are being drawn for other fine residences.

The Maps are now ready, after some delay, and the street work and many high-class improvements will immediately be started.

**Lots Range in Size from 60x160 Feet to Large Villa Homesites**

- Facing either on Main Boulevards or private winding paved streets leading to the larger foothill properties
- RESTRICTIONS—\$7,500 to \$15,000—insure a high order of dwellings.
- IMPROVEMENTS—Paved streets, parkways, curbs, sidewalks, water, lights and gas.
- An ornamental parkway, crowded with attractive trees and shrubbery, runs through the center of Vista Drive to Foothill Drive, thus affording an additional attraction possessed by no other subdivision in Glendale.

**The Present Low Opening Prices—\$1750 and up—**  
Will be greatly advanced after August 1st—A word to the wise is sufficient.

Think of buying Brand Blvd. frontage at these prices. That is what you can do because Brand Blvd. about the 1st of the year will extend out Mountain St. and be the main thoroughfare between Burbank and Pasadena through Glendale.

Drive north on Central avenue to Brand's Estate; Grande Vista adjoins it on the west.

**H. N. LANDON**  
Glendale Office—213 West Broadway Phone Glen. 1179

The Gateway GLENDALE'S NEWEST THEATER SAN FERNANDO ROAD & BRAND BLVD.

"Meet Me At the Gateway"

SATURDAY Continuous From 2:30

SUNDAY Continuous From 2:30

Vengeance of the Deep



"PAWNED"

The seamy side of life, with its thrills, its chills, its heartaches and its romances.

Featuring TOM MOORE and EDITH ROBERTS

"All Over Twist"

The Second Episode Ruth Roland in "The Haunted Valley"

"High Power"

Added Attraction A High Class Novelty Act

L. EARL ABEL At The Organ, Playing

"MELLOW MOON"

(Saturday) and (Sunday) "You Know You Belong To Somebody Else"

BURBANK BROKEN NECK IS CAUSE OF DEATH

Inquest on Victim of Crash Between Milk Truck And Car Is Held

The inquest that was held on the body of Emanuel Bracomonte, who was killed in a collision with a milk truck on Sunday morning...

The most serious other accident of the week was that suffered by L. D. Beck, who was crossing San Fernando boulevard near Vine...

Mr. and Mrs. Fred Luttagge will soon move to their new home on Orange Grove avenue. Mr. Luttagge having returned from the National Guard camp...

Patient Discharged Following Operation

Glendale friends of C. A. Wilkinson of Costa Mesa, who underwent a major operation at the Glendale Sanitarium...

BACK FROM CATALINA

Rev. and Mrs. C. M. Calderwood of 370 Salem street will return this afternoon from Catalina Island...

CHURCHES

WILLIAM ABERHART, B. A., Canadian lecturer and high school principal, who has been giving a series of lectures at the Bible Institute in Los Angeles...

First M. E. Church at corner of Wilson avenue and Kenwood street. Rev. Henry I. Rasmus, Sr., pastor...

Music in the morning: organ prelude; anthem, "They Trust in the Lord" (Fröy)...

St. Mark's Episcopal Church at corner of Harvard and Louise streets. Sunday, July 29, Ninth Sunday after Trinity...

Music in morning, prelude; "Communion" (Batisse); Processional, "Jerusalem the Golden"...

Christian Science Church at corner of Maryland and California avenues. Sunday services at 11 and 8 o'clock...

Congregational Church at North Central and Wilson avenues. Rev. C. M. Calderwood, pastor...

First Baptist Church at corner of Wilson avenue and Louise street. Rev. Ernest E. Ford, pastor...

First Lutheran Church at corner of Harvard and Maryland streets. Dr. H. C. Funk, pastor...

Central Christian Church at Colorado and Louise streets. Rev. Clifford Cole, pastor...

Holy Family Catholic Church at corner of Elk and Louise streets. Rev. Michael Galvin, parish priest...

Concordia Evangelical Lutheran (Missouri Synod) Church at corner of California avenue and Isabel street...

Tropico Presbyterian Church at corner of Central avenue and Laurel street. Dr. James Winard, pastor...

Broadway Methodist Church South Meets in American Legion hall, 610 East Broadway...

Gospel Tabernacle (Christian and Missionary Alliance) Church at corner of Louise and Chestnut streets...

Glendale Presbyterian Church at corner of Broadway and Cedar street. Rev. W. E. Edmonds, pastor...

Music in morning: organ prelude; "Praise the Lord" (Randezburg); Miss Elizabeth Matern, soprano...

Evening music: organ recital, 7:15; (a) "Offertoire Newell" (Ashford)...

Pacific Avenue M. E. Church at corner of Harvard street and Pacific avenue. Rev. H. C. Mullen, pastor...

Seventh-Day Adventist Church at corner of Isabel street and California avenue. Elder R. W. Farnelle, pastor...

Church at South Central and Palmer avenues. Rev. V. Hunter Brink, D. D., pastor...

Holy Family Catholic Church at corner of Elk and Louise streets. Rev. Michael Galvin, parish priest...

Occult Science Services at 2:30 o'clock and 8 o'clock at 313 East Wilson avenue...

Church of the Nazarene 1022 South Glendale avenue. Rev. Henry Scheideman, pastor...

Church at corner of California avenue and Isabel street. Rev. Henry O. Kringel, pastor...

Church at corner of Central avenue and Laurel street. Dr. James Winard, pastor...

Church at corner of Park and North Central avenues. Rev. J. C. Livingston, pastor...

Church at corner of Park and North Central avenues. Rev. J. C. Livingston, pastor...

EAGLE ROCK CAST REHEARSES COMMUNITY PLAY

"All of a Sudden Peggy," Is Chosen by Director For Presentation

Rehearsals for the Community Players' production, "All of a Sudden Peggy," are now under way...

Stucco Not Fireproof E. V. Phillips, local building inspector, advises that stucco houses are not fireproof...

The office hours of Mr. Phillips are from 8 to 10 o'clock in the morning and 4 to 5 o'clock in the afternoon...

Mrs. E. R. Carey of 436 East Stanley avenue is entertaining Miss Clella Staats...

Mrs. E. R. Carey of 436 East Stanley avenue is entertaining Miss Clella Staats...

Steel lockers are now en route to Glendale for the new plant of Glendale Union High School...

Thomas Lee Woolwine Now At La Crescenta According to reports from Los Angeles, Mr. and Mrs. Thomas Lee Woolwine have closed their home on South Rampart boulevard...

Presbyterian Pastor Will Attend Synod Rev. W. E. Edmonds of 121 South Cedar street, pastor of the Presbyterian church...

Glendale Theatre

Wm. A. Howe Sole Manager TODAY AT 2:30, 7:00 AND 9:00 HOOT GIBSON Supported By Laura La Plante In

"SHOOTIN' FOR LOVE" AND FIVE ACTS STANDARD VAUDEVILLE

POPULAR PRICES COME EARLY HARRY ROBERTS Who Walks On His Head JACK & EVA ARNOLD Comedy-Plane-Vocal

MATINEE AT 2:30 SUNDAY EVENING AT 7:30 ONLY William Fox Presents The Harry Millarde Production

"THE TOWN THAT FORGOT GOD"

A MASTERPIECE OF REALISM Direct From a 10 Weeks' Run at The Astor Theatre, New York A Comedy Of Present-Moment Interest

MR. PAUL CARSON AT SOUTHLAND'S GREATEST ORGAN "MIGHTY LIKE A ROSE"

Man to Man This bank seeks to Maintain an intimate Helpful, man-to-man Contact with each Customer whom it is Privileged to serve. How can we be of Assistance to you?

The First National Bank In Glendale 1267 S. Brand Blvd. at Cypress—Glendale W. W. LEE, President. J. A. LOGAN, Cashier

MAYO'S INTERLOCKING POOL Made of Concrete—Installed by HUNTER and ROBINSON Get the Largest and Best Fully Guaranteed over 350 in use in Glendale Costs No More

RADIO High Grade, Standard Apparatus Demonstrated in Your Own Home to Your Satisfaction Before You Buy. R. C. A. CO.—FEDERAL—NEUTRODYNE ANYTHING IN RADIO

KRESS'S 5-10-25-STORE

ANNOUNCEMENT The new Kress store will be ready for business Saturday, Aug. 4. We feel reasonably sure this announcement will be greeted with approval by the thousands who, having known of Kress stores in other cities, can now claim one for Glendale, Calif.

CONSTRUCTION IN EAST Of the \$371,034,000 spent for construction in June, 1923, in the thirty-six eastern states, 37 per cent was for residential construction...

A GREAT HIGH SCHOOL PRINCIPAL WM. ABERHART, B. A. PRINCIPAL OF ONE OF THE LARGEST HIGH SCHOOLS IN WESTERN CANADA, ONE OF THE GREATEST BIBLE TEACHERS OF NORTH AMERICA SPEAKS AT GLENDALE PRESBYTERIAN CHURCH SUNDAY, JULY 29th 11 A. M. "WHAT ABOUT THE MILLENNIUM?" EVERYBODY INVITED—THE PASTOR, W. E. EDMONDS, WILL BE IN CHARGE