

Historic, Archive Document

Do not assume content reflects current scientific knowledge, policies, or practices.

62.61

1920

Catalogue and Price List

OF

Strawberry Plants

RASPBERRY, BLACKBERRY, GOOSEBERRY, CURRANT
and GRAPE PLANTS. FLOWERING PLANTS



PROGRESSIVE

Bears from June to December

HARRY L. SQUIRES, Good Ground, N. Y.

INSPECTION CERTIFICATE

No. 1930

STATE OF NEW YORK
Department of Farms and Markets
Division of Agriculture.

CERTIFICATE OF INSPECTION OF NURSERY STOCK

This is to Certify that the nursery stock of Harry L. Squires, of Good Ground, County of Suffolk, State of New York, was duly examined in compliance with the provisions of Section 305 of the Agricultural Law, and was found to be apparently free from any contagious or infectious disease or diseases, or the San Jose scale or other dangerously injurious insect pest or pests.

This certificate expires September 1, 1920.

Dated, Albany, N. Y., September 22, 1919.

CHARLES S. WILSON,
Commissioner of Agriculture.

IMPORTANT BEFORE ORDERING READ THE FOLLOWING

HOW TO ORDER. Send orders early. Remember that delays are always liable to occur on account of a rush of orders, bad weather, scarcity of help, and other causes. Write plainly your name, post office, county and state, and also give your shipping address if it is different from your post office address. State whether stock is to be shipped by mail, express or freight. All orders will be promptly acknowledged.

PRICES in this catalogue abrogate all previous quotations. **THE PRICES QUOTED ARE FOR THE QUANTITIES SPECIFIED, BUT SIX, FIFTY OR FIVE HUNDRED OF A VARIETY WILL BE SUPPLIED AT DOZEN, HUNDRED AND THOUSAND RATES RESPECTIVELY, EXCEPT WHERE PRICES ARE GIVEN FOR FIFTY AND FIVE HUNDRED. HUNDRED LOTS CANNOT BE MADE UP AT HUNDRED RATES OF LESS THAN FIFTY OF A VARIETY; AND THOUSAND LOTS CANNOT BE MADE UP AT THOUSAND RATES OF LESS THAN FIVE HUNDRED OF A VARIETY.**

GUARANTEE. I warrant all stock to be true to name, with the explicit understanding that should any prove otherwise, I will refund the money paid, or replace it with other stock, but I am not liable for damages beyond this. I do not guarantee the crop, as too many conditions enter into the successful growing of any crop.

CLAIMS, if any, must be made upon receipt of goods, when they will be carefully and cheerfully examined and, if just, all made satisfactory. Claims made after ten days from receipt of goods will not be entertained.

TERMS OF PAYMENT. Invariably, cash in advance. Money may be sent by whatever method is most convenient.

C. O. D. ORDERS. No stock will be sent C. O. D.

PREPAID PRICES. As most people prefer to have stock shipped prepaid, so they will know what the total cost will be, I have quoted prepaid prices on nearly everything listed. At these prices, stock will be shipped prepaid to any part of Maine, New Hampshire, Vermont, Massachusetts, Rhode Island, Connecticut, New York, New Jersey, Pennsylvania, Maryland, District of Columbia, Delaware, Virginia, and West Virginia. Stock will be shipped at my option, by mail or express, whichever is least expensive, but when requested to do so, I will ship by mail 300 strawberry plants, 500 vegetable plants, 100 asparagus roots, 100 raspberry, blackberry or grape plants, 12 roses and similar lots of other stock of about the same sizes. Pot-grown strawberry plants, rhubarb roots, trees and some other things cannot be sent by mail. If through error an express shipment reaches you not prepaid, when you have ordered at prepaid prices, notify me at once, sending the express receipt and I will send you the amount you have to pay for express charges.

SHIPPING. **ALL STOCK IS SHIPPED AT PURCHASERS' RISK.** It will be carefully packed and delivered to forwarders in good condition, but after that it is beyond my control and my responsibility ceases.

SHIPPING POINTS. You will notice that stock is shipped from several different shipping points, and your order may be filled in more than one shipment. By ordering at the prepaid prices, all uncertainty as to transportation charges will be avoided, as you will have none to pay when the stock arrives. I advise you to order at the prepaid prices, for in many cases the amount I have added to cover transportation charges is much less than the actual cost will be.

PACKING. All shipments will be carefully packed and packages will be as light as is consistent with good packing. No charge will be made for boxing and packing.

YOUNG PLANTS. All strawberry plants are dug from new beds.

SUBSTITUTION. It is my custom, should the supply of any variety become exhausted (which will sometimes occur), to substitute a similar variety. When it is desired that I shall not do this it must be so stated in the order. To simply affix the words "No substitution" is all that is necessary.

LARGE ORDERS. Special prices will be quoted on large orders.

BERRY PLANTS IN MID-SUMMER AND FALL. Strawberry plants can be very successfully planted during August and the fall months, and large numbers of them are planted at that time by people who do not get them planted in the spring. Pot-grown plants are usually ready about August 10, and the new runner plants about September 1. Raspberries, blackberries, etc., should be planted later, during October and November.

LARGE ASPARAGUS AND RHUBARB ROOTS FOR QUICK RESULTS. Please notice the large sizes of rhubarb and asparagus roots listed. The large rhubarb roots will produce a crop this season. Asparagus should not be cropped until one year after planting. The larger roots you plant, this year, the larger and more abundant will be the shoots next year. Rhubarb and asparagus roots can be successfully planted any time during the season. In the winter they can be easily grown in the cellar or greenhouse.

GARDEN SUPPLIES. Should you need anything for your garden or farm, that is not listed in this catalogue, such as trees, plants, seeds, berry baskets, implements or other supplies, I can get them for you at market prices, and shall be pleased to quote you prices at any time.

REFERENCE: Center Moriches Bank, Center Moriches, N. Y.

Strawberry Culture

The ground should be prepared the same as for other crops by plowing deeply and thoroughly pulverizing the surface. Almost any kind of fertilizer may be used, but stable manure and finely ground bone meal are among the best. The rows should be from three to four feet apart and the plants should be set from 12 to 18 inches apart in the row. Dip the plants in water before planting, and place them only as deeply in the soil as they stood before they were dug. Press the earth firmly about the roots. Cultivate and hoe them often and, the first season after planting, remove the blossoms as they appear. If possible, in late autumn, cover the strawberry bed with a mulch of salt-meadow hay, or stable manure to a depth of about two inches. If set in rows three feet apart with the plants one foot apart in the row, an acre will require 14,520 plants. If set in rows three and a half feet apart with plants fifteen inches apart in the row, an acre will require 9,963 plants.

It is best to plant early, medium and late varieties, so as to have a long fruiting season, and by planting some of the Everbearing varieties, you can have berries all during the summer and fall.

The blossoms of all strawberries are either hermaphrodite (perfect) or pistillate (imperfect). When planting varieties having imperfect blossoms, every fourth row should be planted with a perfect flowering variety. Varieties marked (Per.) have perfect blossoms and those marked (Imp.) have imperfect blossoms.

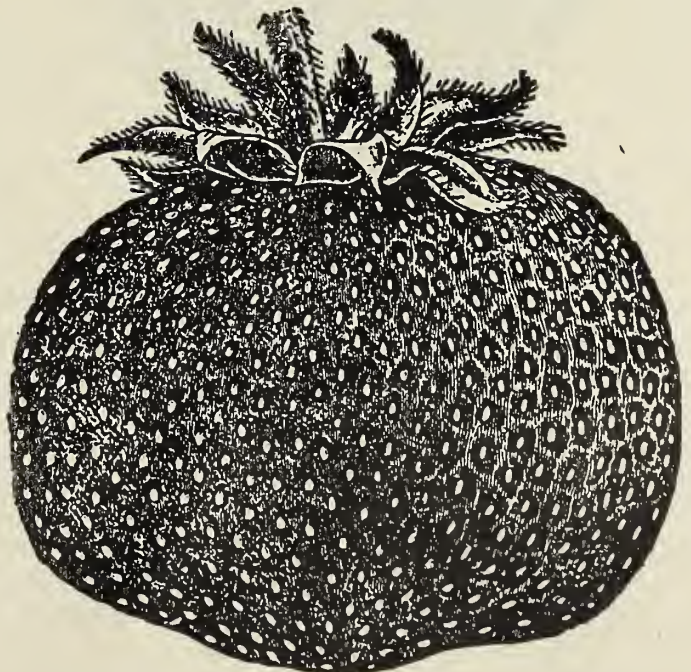
Strawberry Plants



Brandywine

- ✓ **Brandywine.** (Per.) Medium late. Very vigorous and productive. Berries very large; dark red.
- ✓ **Climax** (Per.) Early. A very heavy yielder of very large firm berries.
- ✓ **Chesapeake.** (Per.) Late. Nearly as late as Gandy, larger and just as firm, much more productive, and without green tips. One of the fanciest varieties grown.
- ✓ **Corsican.** (Per.) Same as Ryckman.
- ✓ **Early Jersey Giant.** (Per.) Early. Large. One of the best early berries.
- ✓ **Early Ozark.** (Per.) Very early. Large and enormously productive. Best early variety.
- ✓ **Gandy.** (Per.) Very late. Large and firm.
- ✓ **Glen Mary.** (Per.) Mid-season. A heavy yielder of large fancy berries.

- ✓ **Haverland.** (Imp.) Mid-season. Berries large and conical. Vigorous in growth.
- ✓ **Joe Johnson or Big Joe.** (Per.) Late, ripening at the same time as the Chesapeake. Very large and wonderfully productive. In flavor it is one of the best; firm and a good shipper. Succeeds upon almost all soils and under all conditions.
- ✓ **Klondike.** (Per.) Medium early. Very productive. Berries large and firm.
- ✓ **Marshall.** (Per.) Mid-season. One of the largest and most popular varieties. Extra good flavor.
- ✓ **New York.** (Per.) Same as Ryckman.
- ✓ **Nick Ohmer.** (Per.) Mid-season to late. Very large and fancy.



Ryckman



Sample

✓ **Norwood.** (Per.) Mid-season. Large and fancy. Claimed by the originator to have produced four berries to the quart.

✓ **Parsons Beauty.** (Per.) Mid-season. A heavy yielder of large, handsome berries.

✓ **Pride of Michigan.** (Per.) Same as Ryckman.

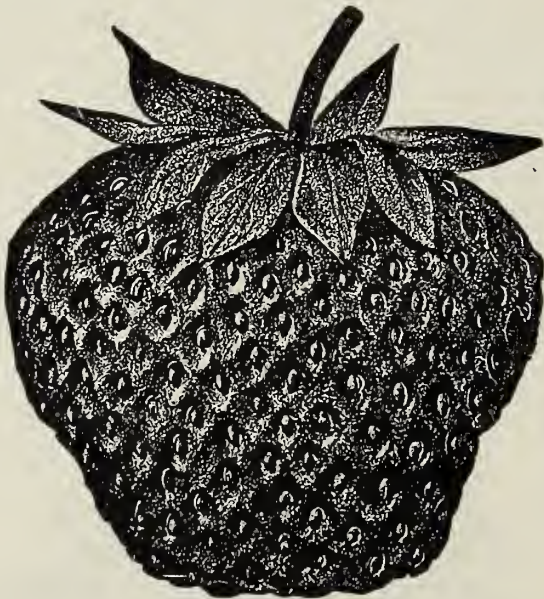
✓ **Ryckman.** (Per.) Medium early. Berries are of the largest size, and unexcelled in sweetness and flavor. It is of very vigorous growth and bears tremendous crops of strictly fancy fruit. It grows well on poor soils and is noted for producing good crops on the same ground for several years in succession. Sells for the highest prices on market. One of the most profitable and popular strawberries in existence.

✓ **Sample.** (Imp.) Medium late. Very vigorous and productive. Berries large and firm. An extra good commercial variety.

✓ **Senator Dunlap.** (Per.) Early to mid-season. One of the most profitable varieties. An extra strong grower and very productive. Berries dark red. Medium large.

✓ **Stevens Late Champion.** (Per.) Late, large and fancy. Will produce twice as many berries as Gandy.

✓ **William Belt.** (Per.) Mid-season. Very large and firm. Considered by many to be the best flavored strawberry grown.



Senator Dunlap



Stevens Late Champion

Madison, N. J.
Dear Mr. Squires: The strawberry plants I bought of you arrived in fine condition and are all set. Thanks for promptness.

Very truly,

C. B. Hallsted.

Fall Bearing or Everbearing Strawberry Plants

Everbearing strawberries are now extensively grown both for home use and for market. They bear fruit steadily from early June until December. To get a large crop during the latter part of summer and in the fall, the blossoms should be picked off until about July 1st. They have the very finest flavor and sell readily at from 25c to 40c per quart.

The best varieties are the Progressive and Superb.

✓ **PROGRESSIVE.** (Per.) Medium size. A vigorous grower and very productive. They bear fruit the same season they are planted. From 100 to 150 ripe berries, green berries and blossoms are often found at a time on a single plant. It has a rich wild strawberry flavor.

✓ **SUPERB.** (Per.) Much like the Progressive, larger, but not so productive.

Pot-Grown Strawberry Plants

FOR SUMMER AND FALL PLANTING



These are large heavily rooted young plants and are shipped with earth on the roots, just as they grow in the pots. They will reach you in a good growing condition and can be safely transplanted at any time, even in the hottest and driest weather, without any serious check to their growth. They will produce a good crop of the largest and finest berries next summer. While the first cost of pot-grown plants is somewhat greater than that of ordinary or runner plants, the advantages to be gained by planting the pot-grown are so great and many, there can be no comparison in value between them for summer planting. I can supply pot-grown strawberry plants from about August 10th until the ground freezes.

Runner Strawberry Plants

For September, October and November Planting

These are strong, well-rooted young plants grown from beds planted this season. They will be properly rooted and ready for transplanting about September 1 unless the weather should be very dry. The earliest of these plants will be shipped from Maryland and are extra good ones, being larger and better rooted at this time of year than plants grown in this latitude. There is a rapidly increasing demand for strawberry plants in September, and during the fall, and I usually sell more plants at that time than during the spring.

559 Garfield Ave., Jersey City, N. J.
Mr. Harry L. Squires, Good Ground, N. Y.

Dear Sir: I beg to acknowledge receipt of your shipment as ordered. The goods were received in first class condition, and I congratulate you on it. If ever called upon, I shall be very glad to repeat the above to any one of your prospective customers. Count me as an established one.

Yours very truly,
James Bloom.

Mr. Harry L. Squires, Good Ground, N. Y.
218 Hilton Ave., Hempstead, N. Y.

Dear Sir: I have meant to advise you that the two shipments of fruit plants reached me in good time and excellent condition. If they do as well as they look, they will certainly be entirely satisfactory.

Thanking you for your prompt and careful attention, I am,
Very truly yours,
E. L. D. Seymour.

Raspberry Plants

- Columbian.** (Purple.) One of the most delicious and popular raspberries grown.
- Cumberland.** (Black.) Mid-season. One of the very largest raspberries.
- Cuthbert.** (Red.) Mid-season. Large, firm and of good flavor. Very productive.
- Gregg.** (Black.) Late. Berries large and covered with bloom. Firm and of rich flavor. An old favorite.
- Marlboro.** (Red.) Very early. Berries large, firm and of the highest quality. One of the very best red raspberries.
- St. Regis Everbearing.** (Red.) Very early. Bears continuously from June till cold weather. Begins bearing the same season it is planted. Berries are medium large, bright red, firm and of the highest quality.



Cuthbert

Blackberry Plants



Blowers

- Blowers.** Mid-season. Very large and of superb quality. Enormously productive and very hardy.
- Eldorado.** Mid-season. Large and sweet. Hardy.
- Snyder.** Mid-season. Hardy. Very productive and very sweet.

Dewberry Plants

- Lucretia.** The standard dewberry. Of slender trailing growth. Earlier than blackberries but larger. Very productive and of delicious flavor.

Berry Baskets and Crates

Ask for prices.

W. Cheshire, Conn.
Mr. Harry L. Squires, Good Ground, N. Y.
Dear Sir: The two Hydrangeas arrived in good condition and I thank you.
Very truly,
S. C. Yale.

Littleville, Mass.
Mr. Harry L. Squires, Good Ground, N. Y.
Dear Sir: Strawberry plants received in good condition. Many thanks.
Very truly,
Mrs. M. H. Morse.

River View Fruit Farm, W. Coxsackie, N. Y.
Mr. Harry L. Squires, Good Ground, N. Y.
Dear Sir: Received the fine potted strawberry plants all right. I am telling my neighbors of your square deal. It is pleasant to know there are honest dealers. Makes us think this old world of curs is not so bad after all.
Very truly yours,
P. V. B. Van Slyke.

Stepney, Conn.
Mr. Harry L. Squires, Good Ground, N. Y.
Dear Sir: We received the cannas this P. M., and wish to say that we are all much pleased with them. We shall be pleased to send to you for anything in your line of goods that we may want in the future.
Very truly,
Anton Zimmerman.

Grapevines



Concord

✓ **Concord.** (Black.) Most popular black variety. Mid-season. Clusters and berries large. Delicious flavor.

✓ **Catawba.** (Red.) The leading red grape in the markets. Vigorous, hardy, productive and of the finest quality. Of all commercial grapes, it is the best keeper, lasting until March or later.

Currant Plants

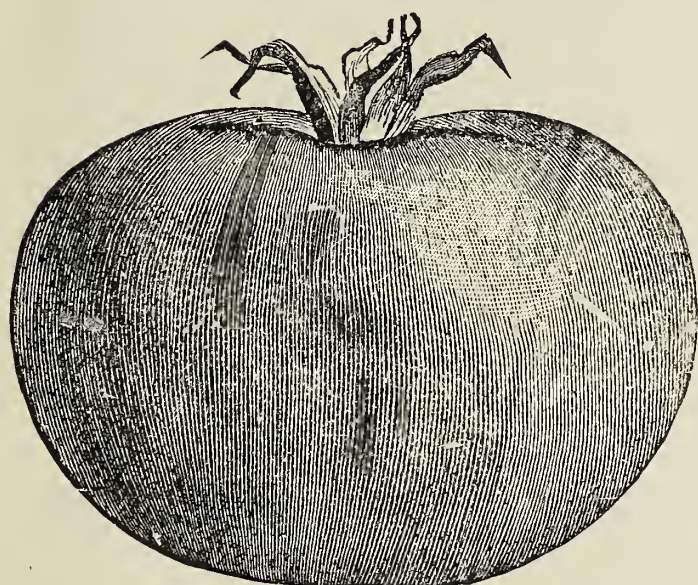
✓ **WILDER.** (Red.) Very large and juicy, bright red, and of the highest quality. Vigorous grower. Long season. One of the very best varieties.

Gooseberry Plants

✓ **CARRIE.** When fully ripe, it is maroon in color and of excellent quality. A marvel of productiveness and one of the most valuable varieties.

✓ **Houghton.** (Red.) Medium size, sweet and very productive.

Vegetable Plants



From early spring till fall, I can supply in large or small lots leading varieties of Beet, Brussels Sprouts, Cabbage, Cauliflower, Celery, Egg, Kohl Rabi, Lettuce, Onion Celeriac, Sage, Leek, Kale, Parsley, Pepper, Sweet Potato and Tomato plants. These plants are packed so they can be safely shipped to any part of the U. S., by mail or express.

RIPE TOMATOES, \$1.65 Per 24 Quart Crate.

Fresh ripe tomatoes, of excellent quality, at \$1.75 per 24 qt. crate. Can usually begin shipping about August 5th.

Asparagus Roots

Asparagus Culture. Asparagus is one of the most delicious and profitable crops grown, and its culture is very simple. Set plants from one to two feet apart in rows three feet apart. Plant five inches below surface. Cover with two inches of earth, filling in balance to a level later in summer.

Asparagus may also be forced in the cellar during winter by planting large roots. Leaflet on "Growing Asparagus and Rhubarb in the Cellar during Winter" will be sent free to each customer buying roots.

Palmetto. Stalks of large size, attractive, rich and tender. Free from rust or blight. Yields a heavy crop at an early age. More extensively grown than any other variety.

Argenteuil. Very similar to Palmetto.

Witloof Chicory (French Endive) Roots

These roots produce a delicious and very popular winter salad. They can be forced in early spring, or by planting in the cellar during winter, the same as asparagus and rhubarb.

Rhubarb Roots

Rhubarb Culture. Plant in rows four feet apart with plants two feet apart in row, and the crown one inch below surface. May be planted any time during the spring, summer or fall. By planting roots of forcing size, it may be easily grown in the cellar during winter.

Myatt's Linnaeus. Early, productive, large and tender. Requires less sugar than other sorts.

Horseradish Roots

Horseradish Culture. Plant roots in rich soil, small end down, with top an inch below surface.

English or Common. The variety in general use.

Roses

CLIMBING ROSES

Crimson Rambler. Most popular out-of-door climber. A rapid producer of long heavy canes, reaching a height of ten to twenty feet in one season. Rich clusters of bloom form a mass of vivid crimson beauty until late in the season. Perfectly hardy.

Dorothy Perkins. Similar to Crimson Rambler except in color which is a clear shell pink.

Climbing American Beauty. Rich red, passing to crimson. Same as American Beauty in size, color and fragrance, with the addition of the climbing habit. Hardy and a wonderfully free bloomer.

Tausendschoen (or Thousand Beauties). An exceptionally beautiful rose. It is a strong grower and from early June until well into July it is literally covered with beautiful clusters of flowers of varying shades from a delicately flushed white to a deep pink or rosy-carmine.

HYBRID PERPETUAL ROSES

Anna de Diesbach. Lovely shell-pink; long pointed buds, very large petals, and large, finely formed, compact flowers, very full and double; sweetly fragrant. Vigorous grower and bloomer.

Coquette des Alpes. Large, full and well formed, with very large petals; pure white; fragrant; profuse bloomer; hardy.

General Jacqueminot. The famous "Jack" rose. Bright scarlet-crimson. Large, rich, brilliant, velvety and fragrant.

Madame Plantier. Pure white, large and double; hardy as a forest tree; a free and continuous bloomer. Very popular.

Marshall P. Wilder. Deep, rich cherry-carmine; extra large and full; a very strong grower and free bloomer.

Paul Neyron. Clear cherry-rose. The largest of all roses; very double and full; finely scented; blooms first season and all summer. Grows to a great height in a single season.

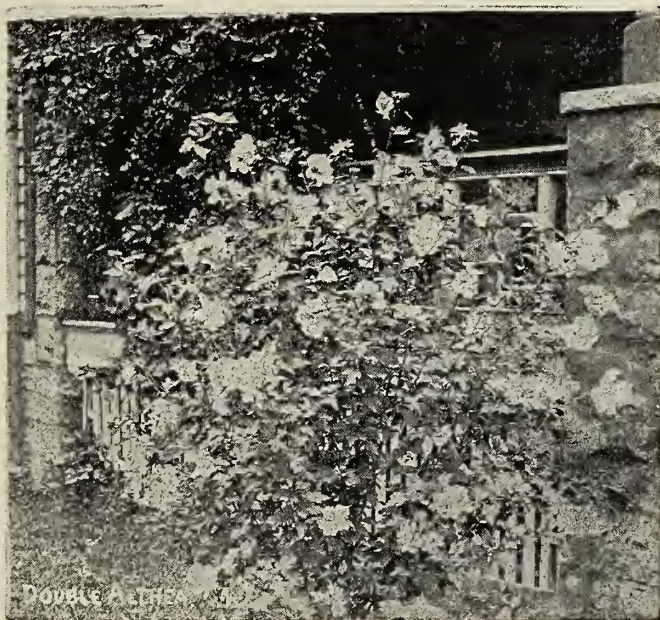
Prince Camille de Rohan. Universally known as "The Black Rose," owing to its very deep, velvety crimson color, passing to intense maroon, and shaded black; large, handsome and fragrant blooms.

Vick's Caprice. A variegated hardy rose. Large, fragrant and attractive flowers of satiny-pink, distinctly striped and shaded with white and bright carmine; slightly cup-shaped, but full and deep; blooms at frequent intervals during the entire season; healthy and vigorous.



Prince Camille de Rohan

Ornamental Shrubs



ALTHEA or ROSE OF SHARON. Flowers are of good size, trim and attractive; blooms in September and October. Pink, purple, red, white.

CALYCANTHUS or SWEET SCENTED SHRUB. Its foliage is rich; flowers of a rare chocolate color, with an agreeable odor. Blossoms in June and at intervals through the summer.

BUTTERFLY BUSH. A beautiful and very popular shrub. Matures rapidly and will make a handsome bush, the first season. It produces beautiful lilac-colored flowers in profusion, and blossoms the entire summer.

DEUTZIA, Pride of Rochester. Very large double white flowers. Very early. Excels other varieties in size of flower, profuse bloom and vigorous growth.

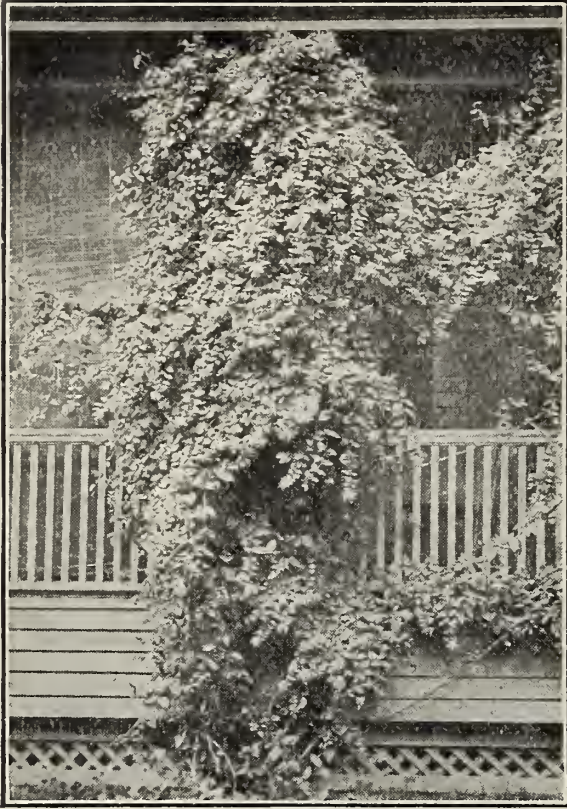
DEUTZIA, Candida. Pure white flowers, very double.

FORSYTHIA or GOLDEN BELL. A very early and showy spring bloomer; flowers bright yellow, appearing before the leaves. Very effective for covering steep slopes, walls, fences and arbors.

ELDER, Golden-Leaved. A handsome variety with golden-yellow foliage, which renders the plant very conspicuous and effective. White flowers.

PURPLE FRINGE or SMOKE TREE. A small tree or shrub very much admired on account of its peculiar fringe or hair-like flowers, covering the whole surface of the bush in mid-summer.

PURPLE-LEAVED FILBERT. A very ornamental shrub, with large, dark purple leaves, particularly effective in shrubberies, or when planted by itself.



HONEYSUCKLE, Upright. A well known shrub of erect habit. Valuable for its handsome flowers and showy fruit. Delightfully fragrant; one spray will fill a room with its delicate perfume. Pink, red and white.

HIGH BUSH CRANBERRY. Very ornamental. Its red berries resemble cranberries and hang on until destroyed by frost.

HYDRANGEA, P. G. One of the most popular hardy shrubs. The immense heads of bloom are cream-color in bud, pure white when fully expanded, changing to pink and bronze with age, and finally to brown when frosted.

HYDRANGEA, Arborescens Grandiflora (Hill of Snow). Flowers are pure snow-white, and its panicles which are flat, often measure 12 inches across. Perfectly hardy and of the easiest culture.

LILAC, Lemoine. A choice variety bearing large clusters of double white flowers.

LILAC, Chas. 10th. A rapid growing variety. Flower trusses large. Color reddish purple.

LILAC, Pres. Grevy. One of the finest. Panicles large and flower a beautiful blue.

LILAC, Purple. Bluish-purple flowers, standard variety.

LILAC, White. Cream colored flowers.

SNOWBALL, Common. A very popular shrub producing its snowy-white sterile flowers in large balls in June.

SNOWBALL, Japan. An erect, compact shrub, blooming in June; completely covered with large balls of flowers that are as white as snow; foliage is dark green.

QUINCE, Japan. Dark green foliage, and showy deep scarlet flowers of good size, produced singly or in masses along the branches.

TAMARIX. A strong upright grower, with fine feathery foliage. Small pink flowers. Splendid shrub for seaside planting.

SYRINGA, Golden. A very pretty medium sized shrub with golden-yellow foliage. It keeps its color the entire season.

SYRINGA, Common. Very hardy and vigorous, with large handsome foliage and beautiful white flowers produced in greatest profusion.

SPIREA, Van Houttei. The finest of all the Spireas. In May and June, the bush is covered with white flowers, presenting a beautiful appearance.

SPIREA, Anthony Waterer. A dwarf variety of great beauty. Its broad flat heads of red flowers continue in perfection all summer.

SPIREA, Aurea (Golden). Foliage green, bordered with rich golden yellow. In June, the branches are covered with double white flowers.

SPIREA, Billardi. Rose colored flowers in spikes; blooms nearly all summer.

WEIGELA, Candida. A choice variety, blooming in great profusion during June and to some extent all summer. Pure white.

WEIGELA, Rosea. An elegant shrub, with fine rose-colored flowers; of erect, compact growth; blossoms in June.

WEIGELA, Eva Rathke. Flowers brilliant crimson. A very attractive variety. Almost a continuous bloomer.

WEIGELA, Variegated. Of dwarf habit; finely variegated foliage which lasts the entire season; contrasts nicely with its rose-colored flowers.

Ornamental Vines

AMPELOPSIS Veitchii (Japan Ivy). A beautiful, hardy climbing plant of Japanese origin. It grows rapidly and clings with the tenacity of Ivy. The foliage is very handsome, green in summer, changing to crimson in autumn. For covering brick and stone structures, walls, etc., no plant is so useful.

CLEMATIS, Paniculata. Single, white. Of extremely rapid growth, with shining green foliage, and a profusion of flowers which are small but borne in large panicles.

CLEMATIS, Jackmanii. Large, intense violet purple, and remarkable for its velvety richness; free in growth and abundant and successive bloomer.

CHINESE MATRIMONY VINE. One of the hardiest of climbing vines. Purple flowers and later covered with scarlet berries.

HONEYSUCKLE, Hall's Japan. A strong vigorous grower, almost evergreen, with pure white flowers, turning to yellow; very fragrant; covered with flowers from July to December.

IVY, American, or Virginia Creeper. A fine rich green in summer, changing to crimson in Autumn. Affords shade quickly and is very desirable for covering walls, verandas, or trunks of trees.

WISTARIA, Chinese Purple. One of the most elegant and rapid growing of all climbing plants. Vines grow 15 to 20 feet in a season and produce long, hanging clusters of pale blue flowers in spring and fall.

WISTARIA, Chinese White. Same as above except that flowers are pure white.

Hedge Plants

CALIFORNIA PRIVET. A rapid and vigorous grower. It has handsome glossy, oval-shaped leaves which remain on well into the winter. Very popular for ornamental hedges and trimmed specimens.

BARBERRY THUNBERGII. Dwarf grow-

ing; foliage, rich bright green which changes to a brilliant red color in autumn. Red berries also appear at that time. It is perfectly hardy, easily transplanted, and free from insects. Very ornamental and as attractive in winter as in summer.

PRICE LIST

At the prepaid prices given, stock will be shipped prepaid to any part of Me., N. H., Vt., Mass., Conn., R. I., N. Y., Penna., N. J., Dela., Md., Va., W. Va., and D. C. For quantities that can be shipped by mail, see note on "Prepaid Prices" in the first part of catalogue. Upon request, I will quote prepaid prices to any part of the U. S. I advise customers to order at prepaid prices so they will have no transportation charges to pay when stock arrives and so they will know, when ordering, exactly what the stock will cost them, delivered.

THE PRICES QUOTED ARE FOR THE QUANTITIES SPECIFIED, BUT SIX, FIFTY AND FIVE HUNDRED OF A VARIETY WILL BE SUPPLIED AT DOZEN, HUNDRED AND THOUSAND RATES RESPECTIVELY, EXCEPT WHERE PRICES ARE GIVEN FOR FIFTY AND FIVE HUNDRED. HUNDRED LOTS CANNOT BE MADE UP AT HUNDRED RATES OF LESS THAN FIFTY OF A VARIETY; AND THOUSAND LOTS CANNOT BE MADE UP AT THOUSAND RATES OF LESS THAN FIVE HUNDRED OF A VARIETY.

Because of the present unsettled conditions, I wish to emphasize that I DO NOT GUARANTEE SAFE DELIVERY, and that ALL STOCK IS SHIPPED AT PURCHASERS' RISK. It will be carefully packed and delivered to the carrier in good condition, but after that, it is beyond my control and my responsibility ceases.

BERRY PLANTS

SHIPPING POINTS: Berry plants will be shipped from Good Ground, N. Y., and from other points in N. Y., N. J., Dela., and Md.

Vegetable Plants

SHIPPING POINTS: Vegetable plants will be shipped from Good Ground, N. Y., and from other points in N. Y., N. J., Penna. and Dela.

BEEF PLANTS

VARIETY: Early Eclipse.

	Not Prepaid		Prepaid to States Named				
	500	1000	12	50	100	500	1000
Plants ready early in April.....	\$ 2.75	\$ 4.90	\$.15	\$.50	\$.95	\$ 2.95	\$ 5.20
Plants ready about June 1st.....	1.75	3.25	.15	.45	.80	1.95	3.55

BRUSSELS SPROUTS PLANTS

Plants ready early in April.....	\$ 3.85	\$ 7.50	\$.25	\$.70	\$ 1.15	\$ 4.05	\$ 7.80
Plants ready about June 1st.....	2.90	5.50	.25	.60	1.10	3.10	5.80

CAULIFLOWER PLANTS

VARIETIES: Early Snowball and Erfurt.

Plants ready early in April.....	\$ 4.50	\$ 8.75	\$.30	\$.80	\$ 1.45	\$ 4.70	\$ 9.05
Plants ready about June 1st.....	2.90	5.50	.25	.60	1.10	3.10	5.80

CABBAGE PLANTS

VARIETIES: Charleston Wakefield, Early Jersey Wakefield, Copenhagen Market, Early Summer, Succession, All Seasons, All Head Early, Sure Head, Danish Ballhead, Late Flat Dutch, Savoy and Red.

Plants ready early in April.....	\$ 3.95	\$ 7.50	\$.25	\$.70	\$ 1.25	\$ 4.15	\$ 7.80
Plants ready about June 1st.....	1.60	2.90	.20	.45	.80	1.80	3.20

CELERY PLANTS

VARIETIES: Golden Self Blanching, White Plume, Giant Pascal and Winter Queen.

Plants ready about May 1st.....	\$3.00	\$ 5.00	\$.20	\$.50	\$.90	\$ 3.20	\$ 5.30
Plants ready about June 25th.....	1.90	3.50	.15	.45	.80	2.10	3.80

CELERIAC PLANTS

Plants ready about June 25th.....	\$1.90	\$ 3.50	\$.15	\$.45	\$.80	\$ 2.10	\$ 3.80
-----------------------------------	--------	---------	--------	--------	--------	---------	---------

EGG PLANTS

VARIETIES: Black Beauty and N. Y. Improved Spineless.

Plants ready about May 1st.....	\$5.75	\$11.00	\$.45	\$ 1.05	\$ 2.00	\$ 5.95	\$11.30
Plants ready about June 1st.....	4.75	9.00	.35	.90	1.70	4.95	9.30

KOHL-RABI PLANTS

Plants ready early in April.....	\$3.95	\$ 7.50	\$.25	\$.70	\$ 1.25	\$ 4.15	\$ 7.80
Plants ready about May 25th.....	1.75	3.25	.20	.50	.90	1.95	3.55

LEEK PLANTS

Plants ready about May 25th.....	\$2.25	\$ 4.00	\$.20	\$.50	\$.90	\$ 2.40	\$ 4.25
----------------------------------	--------	---------	--------	--------	--------	---------	---------

LETTUCE PLANTS

VARIETIES: Big Boston and Grand Rapids.

Plants ready about April 1st.....	\$2.50	\$ 4.50	\$.20	\$.45	\$.80	\$ 2.70	\$ 4.80
Plants ready about May 1st.....	1.60	2.75	.15	.40	.75	1.80	3.05

KALE PLANTS

Plants ready about May 25th.....	\$1.75	\$ 3.25	\$.20	\$.50	\$.90	\$ 1.95	\$ 3.55
----------------------------------	--------	---------	--------	--------	--------	---------	---------

ONION PLANTS

VARIETY: Prizetaker.

Plants ready early in April.....	\$1.80	\$ 3.50	\$.15	\$.40	\$.75	\$ 2.00	\$ 3.75
----------------------------------	--------	---------	--------	--------	--------	---------	---------

PARSLEY PLANTS

VARIETY: Double Curled.

Plants ready early in April.....	\$2.75	\$ 4.90	\$.25	\$.60	\$ 1.00	\$ 2.95	\$ 5.20
----------------------------------	--------	---------	--------	--------	---------	---------	---------

PEPPER PLANTS

VARIETIES: Chinese Giant, Ruby King and Long Red Cayenne.

Plants ready about May 1st.....	\$5.25	\$10.00	\$.40	\$ 1.00	\$ 1.85	\$ 5.45	\$10.30
Plants ready about June 1st.....	3.90	7.50	.35	.85	1.50	4.10	7.80

SWEET POTATO PLANTS

VARIETY: Yellow Jersey.

Plants ready about May 15th.....	\$ 2.75	\$ 4.75	\$.25	\$.65	\$ 1.10	\$ 2.95	\$ 5.05
----------------------------------	---------	---------	--------	--------	---------	---------	---------

TOMATO PLANTS

VARIETIES: Earliana, Chalk's Early Jewel, New Stone, Livingston's Stone, Ponderosa, Matchless, Beeksteak, John Baer and Bonny Best.

Plants ready about April 15th.....	\$4.15	\$ 7.65	\$.25	\$.80	\$ 1.40	\$ 4.35	\$ 7.90
Plants ready about June 1st.....	2.25	4.00	.20	.50	.90	2.45	4.30

The dates named above, when vegetable plants will be ready, are only approximate. Sometimes they are ready earlier and sometimes later than those dates.

HEDGE PLANTS

	Not Prepaid			Prepaid to States named		
	12	100	1000	12	100	1000
PRIVET, California, 18 to 24 in.....	\$1.25	\$ 6.75	\$50.00	\$ 1.50	\$ 7.50	\$52.00
PRIVET, California, 2 to 3 ft.....	1.75	7.75	60.00	2.00	8.50	62.00
BARBERRY, Thunbergii, 12 to 18 in.....	2.00	12.00		2.25	12.75	

ORNAMENTAL SHRUBS

	Each	12	Each	12
ALTHEA, or ROSE OF SHARON.....	\$.55	\$ 5.50	\$.70	\$ 6.25
BUTTERFLY BUSH55	5.50	.70	6.25
CALYCANTHUS55	5.50	.70	6.25
DEUTZIA, All varieties listed55	5.50	.70	6.25
ELDER, Golden-leaved60	6.00	.75	6.75
FORSYTHIA or GOLDEN BELL.....	.55	5.50	.70	6.25
PURPLE FRINGE or SMOKE TREE.....	.55	5.50	.70	6.25
PURPLE-LEAVED FILBERT55	5.50	.70	6.25
HONEYSUCKLE, Upright55	5.50	.70	6.25
HIGH BUSH CRANBERRY55	5.50	.70	6.25
HYDRANGEA, P. G.60	6.00	.75	6.75
HYDRANGEA, Arborescens65	6.50	.80	7.25
LILAC, Lemoine, Chas. 10th, Pres. Grevy.....	.75	7.50	.90	8.25
LILAC, Common White and Purple.....	.55	5.50	.70	6.25
SNOWBALL, Common55	5.50	.70	6.25
SNOWBALL, Japan60	6.00	.75	6.75
QUINCE, Japan55	5.50	.70	6.25
TAMARIX55	5.50	.70	6.25
SYRINGA, Common55	5.50	.70	6.25
SYRINGA, Golden60	6.00	.75	6.75
SPIREA, All varieties, listed.....	.55	5.50	.70	6.25
WEIGELA, All varieties listed.....	.55	5.50	.70	6.25

ORNAMENTAL VINES

CLEMATIS, Paniculata75	8.25	.90	9.00
CLEMATIS, Jackmanii75	8.25	.90	9.00
CHINESE MATRIMONY VINE55	5.50	.70	6.25
HONEYSUCKLE, Hall's Japan55	5.50	.70	6.25
WISTARIA, Chinese Purple55	5.50	.70	6.25
WISTARIA, Chinese White60	6.00	.75	6.75
AMPELOPSIS VEITCHII (Japan Ivy)55	5.50	.70	6.25
AMERICAN IVY or Virginia Creeper55	5.50	.70	6.25
AMERICAN IVY or Virginia Creeper.....	.55	5.50	.70	6.25

ROSES

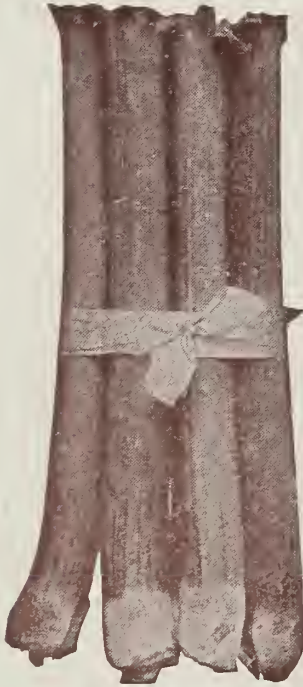
ALL VARIETIES LISTED80	8.00	.95	8.75
----------------------------	-----	------	-----	------

FLOWERING PLANTS

	Not Prepaid		Prepaid to States Named				
	500	1000	Each	12	100	500	1000
ASTERS, Late Branching	\$ 3.80	\$ 7.25		\$.30	\$1.50	\$ 4.00	\$ 7.75
PANSIES, Large Flowering	4.50	9.50		.45	1.90	4.70	9.80
SALVIA, Splendens (Scarlet Sage)	10.50	20.00		.75	3.00	10.80	20.50
PHLOX, Perennial, Pink, Red, White, Purple, Lilac and Variegated (State colors wanted)30	3.00			

Plants and Roots for Winter Forcing in Cellar and Greenhouse

	Not Prepaid				Prepaid to States Named			
	12	100	500	1000	12	100	500	1000
ASPARAGUS ROOTS, Large Selected	\$1.00	\$ 4.75	\$16.00	\$30.00	\$ 1.20	\$ 5.10	\$16.90	\$31.40
RHUBARB ROOTS, Forcing Size.	2.25	10.50	38.00	75.00	2.60	11.25	40.00	78.00
WITLOOF CHICORY or FRENCH ENDIVE ROOTS90	3.90	16.00	30.00	1.10	4.40	17.50	32.00
LETTUCE PLANTS, Grand Rapids and Big Boston.....			1.60	2.75		.75	1.80	3.05
PARSLEY PLANTS, Double Curled			2.75	4.90		1.00	2.95	5.20



Vegetable Plants and Roots

Cabbage, Cauliflower, Sweet Potato, Celery, Pepper, Beet, Brussels Sprouts, Lettuce, Onion, Parsley, Tomato and Egg Plants.

Asparagus, Rhubarb, Horseradish and Chicory Roots.

HARRY L. SQUIRES, Good Ground, N.Y.

