

AIRCRAFT ACTION REPORT

CONFIDENTIAL

I. GENERAL

(a) Unit Reporting COMPTON BIGHT (b) Based on or at USS NEHENTA BAY (CVE-74) (c) Report No 59-45
 (d) Take off: Date 21 June 1945 Time (LZT) 1130 I (Zone); Lat. 24° 42' N Long 127° 00' E
 (e) Mission Strike on Suwana A/P, Miyako Shima (f) Time of Return 1430 I (Zone)

II. OWN AIRCRAFT OFFICIALLY COVERED BY THIS REPORT.

TYPE (a)	SQUADRON (b)	NUMBER			BOMBS AND TORPEDOES CARRIED (PER PLANE) (f)	FUZE, SETTING (g)
		TAKING OFF (c)	ENGAGING ENEMY A/C (d)	ATTACKING TARGET (e)		
<u>PBH-3</u>	<u>VC-8</u>	<u>6</u>	<u>0</u>	<u>6</u>	<u>10 (AN-M30) 100# G.P. Bombs</u> <u>3 Plane 7 HVAR Rockets</u> <u>3 Plane 8 HVAR Rockets</u>	<u>AN-M103A1 Instant. Nose</u> <u>AN-M100A2 .01 Delay Tail</u> <u>Mk-149 Instant. Nose</u> <u>Mk-159 .015 Delay Tail</u>
<u>PH-2</u>	<u>VC-8</u>	<u>8</u>	<u>0</u>	<u>8</u>	<u>6 HVAR Rockets</u>	<u>Mk-149 Instant. Nose</u> <u>Mk-159 .015 Delay Tail</u>

III. OTHER U. S. OR ALLIED AIRCRAFT EMPLOYED IN THIS OPERATION.

TYPE	SQUADRON	NUMBER	BASE	TYPE	SQUADRON	NUMBER	BASE
<u>None</u>							

IV. ENEMY AIRCRAFT OBSERVED OR ENGAGED (By Own Aircraft Listed in II Only).

(a) TYPE	(b) NO. OBSERVED	(c) NO. ENGAGING OWN A/C	(d) TIME ENCOUNTERED	(e) LOCATION OF ENCOUNTER	(f) BOMBS, TORPEDOES CARRIED; GUNS OBSERVED	(g) CAMOUFLAGE AND MARKING
<u>None</u>			<u>(ZONE)</u>			
			<u>(ZONE)</u>			
			<u>(ZONE)</u>			

(h) Apparent Enemy Mission(s) XX
 Did Any Part of
 (i) Encounter(s) Occur in Clouds? XX If so, Describe Clouds XX
(YES OR NO) (BASE IN FEET, TYPE AND TENTHS OF COVER)
 Time of Day and Brilliance
 (j) of Sun or Moon XX (k) Visibility XX
(NIGHT, BRIGHT MOON; DAY, OVERCAST; ETC.) (MILES)

V. ENEMY AIRCRAFT DESTROYED OR DAMAGED IN AIR (By Own Aircraft Listed in II Only).

(a) TYPE ENEMY A/C	(b) DESTROYED OR DAMAGED BY:				(c) WHERE HIT, ANGLE	(d) DAMAGE CLAIMED
	TYPE A/C	SQUADRON	PILOT OR GUNNER	GUNS USED		
<u>None</u>						

AIRCRAFT ACTION REPORT

RESTRICTED
(Reclassify when filled out)

CONFIDENTIAL

REPORT No. 32-45

VI. LOSS OR DAMAGE, COMBAT OR OPERATIONAL, OF OWN AIRCRAFT (of those listed in II only).

(a) TYPE OWN A/C	(b) SQUADRON	(c) CAUSE: TYPE ENEMY A/C, TYPE GUN, OR OPERATIONAL CAUSE	(d) WHERE HIT, ANGLE (List armor, self-sealing tanks, equipment hit)	(e) EXTENT OF LOSS OR DAMAGE, (Give Bureau serial number of planes destroyed)
1 TB-3	VC-8	Light Arms Fire or Bomb Shrapnel	Port Wing	Slight Damage
2				
3				
4				
5				
6				
7				
8				
9				
10				
11				
12				
13				
14				

VII. PERSONNEL CASUALTIES (in aircraft listed in II only; identify with planes listed in VI by Nos. at left).

(a) NO.	(b) SQUADRON	(c) NAME, RANK OR RATING	(d) CAUSE	(e) CONDITION OR STATUS
	None			

VIII. RANGE, FUEL, AND AMMUNITION DATA FOR PLANES RETURNING

(a) TYPE A/C	(b) MILES OUT	(c) MILES RETURN	(d) AV. HOURS IN AIR	(e) AV. FUEL LOADED	(f) AV. FUEL CONSUMED	(g) TOTAL AMMUNITION EXPENDED				(h) NO. OF PLANES RETURNING
						.30	.50	20MM	MM	
TB-3	95	95	3.0	350	199			2,500		6
FB-2	95	95	3.0	855	153			10,460		8

IX. ENEMY ANTI-AIRCRAFT ENCOUNTERED (Check one block on each line).

CALIBER	NONE	MEAGER	MODERATE	INTENSE
HEAVY — Time-fused shells, 75mm and over	XX			
MEDIUM — Impact-fused shells, 20mm-50mm	XX			
LIGHT — Machine gun bullets, 6.5mm-13.2mm		XX		

X. COMPARATIVE PERFORMANCE, OWN AND ENEMY AIRCRAFT (use check list at left).

- SPEED, CLIMB,
at various altitudes
- TURNS
- DIVES
- CEILINGS
- RANGE
- PROTECTION
- ARMAMENT

No encounter.

AIRCRAFT ACTION REPORT

RESTRICTED
(Reclassify when filled out)

CONFIDENTIAL

(OMIT THIS SHEET IF NO ATTACK WAS MADE)

REPORT No. 39-45

XI. ATTACK ON ENEMY SHIPS OR GROUND OBJECTIVES (By Own Aircraft Listed in II Only).

- (a) Target(s) and Location(s) Subarea 1/2 on Miyako Shima (b) Time Over Target(s) 1225-1320 I (Zone)
(FOR SHIPS, INCLUDE ALL IN AREA UNDER ATTACK)
- (c) Clouds Over Target 10/10 Strato (ceiling at 3000 feet)
(BASE IN FEET, TYPE AND TENTHS OF COVER)
- (d) Visibility of Target Hazy (e) Visibility 6
(CLEAR, HAZY, PARTIALLY OBSCURED BY CLOUDS, ETC.) (MILES)
- (f) Bombing Tactics: Type Glide Bomb Sight Used None
(LEVEL, GLIDE OR DIVE) (TYPE)
- Bombs Dropped per Run 3 and 4 Spacing 40 Altitude of Bomb Release 2000
(NUMBER) (FEET) (FEET)
- (g) Number of Enemy Aircraft Hit on Ground: Destroyed None Probably Destroyed None Damaged None

(h) AIMING POINT	(i) DIMENSIONS OR TONNAGE	(j) NO A/C ATTACKING (k) SQUADRON	(l) BOMBS AND AMMUNITION EXPENDED EACH AIMING POINT	(m) NO HITS On Aiming Point	(n) DAMAGE (None, slight, serious, destroyed or sunk)
1 Runway	XX	6 VC-3	52 100# G.P. Bombs	15	Serious
2 Fuel Dump	XX	14 VC-3	28 100# G.P. Bombs 50 HVAR Rockets 9000 Rds. .50 Cal.	13 35 Many	Destroyed
3 Buildings	XX	6 VC-3	30 HVAR Rockets 4000 Rds. .50 Cal.	2 Many	Serious

(o) RESULTS: (For all hits claimed on ship targets and for land targets of special interest, draw diagram, top or side view or both, as appropriate, showing type and location of hits. For all targets give location and effect of hits, and identify by numbers above. Use additional sheets if necessary).

1. The first attack was against the runway. The fifteen (15) craters were added to the many others already there.

2. The fuel dump northeast of the field, Target Area 1094L, was hidden in a clump of trees and consisted of four (4) or more trenches estimated to be ten (10) feet long by four (4) feet wide by five (5) feet deep each pit containing oil drums. The hits above mentioned resulted in an explosion throwing flame 200 feet in the air and black heavy smoke up to 2000 feet. It was still burning when the planes left.

3. Buildings in Target Area 0394D and 1191 A, were attacked with rockets and H.C. fire. One building in each area was struck by rockets and bullets and each was destroyed by fire. Attention was attracted to these areas by light AA fire issuing from the general localities.

The runway is a mass of craters and all buildings in the area are wrecked. This squadron attacked this field on 7 June 1945. No repairs have been made since then. The runway could be repaired by filling the many holes but all other facilities appear damaged beyond repair.

(p) Were Photographs Taken? Yes Photographs of Damage, When Taken, Should Be Attached By Staple.

AIRCRAFT ACTION REPORT

CONFIDENTIAL

REPORT No. **89-45**

XII. TACTICAL AND OPERATIONAL DATA. (Narrative and comment. Describe action fully and comment freely,

following applicable items in check list at left. Use additional sheets if necessary.)

ENGAGEMENT WITH ENEMY

OWN AIRCRAFT

Disposition
Altitudes
Speeds
Approach Tactics
Use of Cover, Deception
Angles of Attack and
Their Effectiveness
Distance of Opening Fire
Defense Tactics and
Their Effectiveness

ENEMY AIRCRAFT

Method of Locating, Distance
Disposition
Altitudes
Speeds
Approach Tactics
Use of Cover, Deception
Angles of Attack
Distance of Opening Fire
Defensive Tactics

COMMENTS AND RECOMMENDATIONS

Own Weaknesses
Enemy Weaknesses
Offensive Tactics, Own
" " , Enemy
Defensive Tactics, Own
" " , Enemy
Flexible Gunnery, Own
Escort Tactics
Fighter Direction
Use of Radar
Night Fighting
Recognition, Aircraft

This flight left Task Unit 32.1.1 in company with other planes striking other targets on the same island. The individual attack groups separated as the island was approached.

The first attack was against the runway of the field with VF preceding the VF and strafing revetments and possible AA positions.

During this run Lt.(jg) Roger I. MELVIN, (A1), USNR (263669), leading a VF division noticed the fuel dump reported in XI. He organized the group and because of the small amount of AA and low clouds organized a traffic circle of individual attacks from the East pulling out to the South.

While this was going on the fighters noticed slight amounts of AA fire coming from areas containing buildings. There were attacked as described in XI.

Photograph attached is a print from the gun camera film of the plane flown by Lt.(jg) Warren P. WICKWIRE, (A1), USNR (351036). They show the fire started by Lt.(jg) Wickwire and Lt.(jg) Melvin and further spread by the rest of the flight.

ATTACK

OWN TACTICS

Method of Locating Target
Approach to Target
Altitudes, Speeds
Approach
Dive
Pull-Out
Dive Angle
Strafing
Retirement
Defensive Tactics
Use of Jamming

DEFENSE, ENEMY

Evasive Tactics, Ships
Concealment
Searchlights
Night Fighter Tactics
Use of Jamming

COMMENTS AND RECOMMENDATIONS

Bombing Tactics
Torpedo Tactics
Effectiveness of
Bombs, Torpedoes
Selection of Targets
Fuzing
Strafing Tactics
Defensive Tactics
Use of Radar
Reconnaissance
Photography
Briefing

OPERATIONAL

Navigation
Homing
Rendezvous
Recognition, Ships
Communications
Flight Operations
Search and Tracking
Base Operations
Maintenance

AIRCRAFT ACTION REPORT

RESTRICTED
(Reclassify when
filled out)

REPORT No 59-45

CONFIDENTIAL

XIII. MATERIAL DATA. (Comment freely on performance or suitability, following check list at left.
Use additional sheets if necessary).

ARMAMENT

- Guns, Gunsights
- Turrets
- Ammunition
- Bombs, Torpedoes
- Bomb Sights
- Bomb Releases

COMMUNICATIONS

- Radio, Radar
- Homing Devices
- Visual Signals
- Codes, Ciphers

RECOGNITION

- IFF
- Signals
- Battle Lights
- Procedures

PROTECTION

- Armor, Points and Angles
of Fire Needing Further
Protection
- Leak Proofing

EMERGENCY EQUIPMENT

- Parachutes
- Life Belts, Life Rafts
- Safety Belts
- Emergency Kits
- Rations, First Aid

NAVIGATIONAL EQUIPMENT

- Compasses
- Driftsights
- Octants
- Automatic Pilots
- Charts
- Field Lighting

INSTRUMENTS

- Flight
- Power Plant

OXYGEN SYSTEM

**CAMOUFLAGE AND
DECEPTION DEVICES**

STRUCTURE

- Airframe
- Control Surfaces
- Control System
- Dive Flaps
- Landing Gear
- Heating System
- Flight Characteristics
At Various Loadings

POWER PLANT

- Engines
- Engine Accessories
- Propellers
- Lubricating System
- Starters
- Exhaust Dampers

HYDRAULIC SYSTEM

ELECTRICAL SYSTEM

- Auxiliary Plant
- Lights

FUEL SYSTEM

FLIGHT CLOTHING

MAINTENANCE

BASE FACILITIES

- Plane Servicing Equipment
- Personnel Facilities

Four (4) HVAR rockets were brought back due to failure in the launcher electrical systems. Three (3) planes were involved -- one (1) VF with two (2) rockets and two (2) VF with one (1) rocket each. In the case of the VF which brought back a pair of rockets it is possible the pilot did not set his station distributor properly.

REPORT PREPARED BY:

APPROVED BY:

R. E. COUNTRYMAN, Lt.(jg), (A), USNR

H. D. HOSCH, Lieutenant, U.S.Navy

24 June 1945

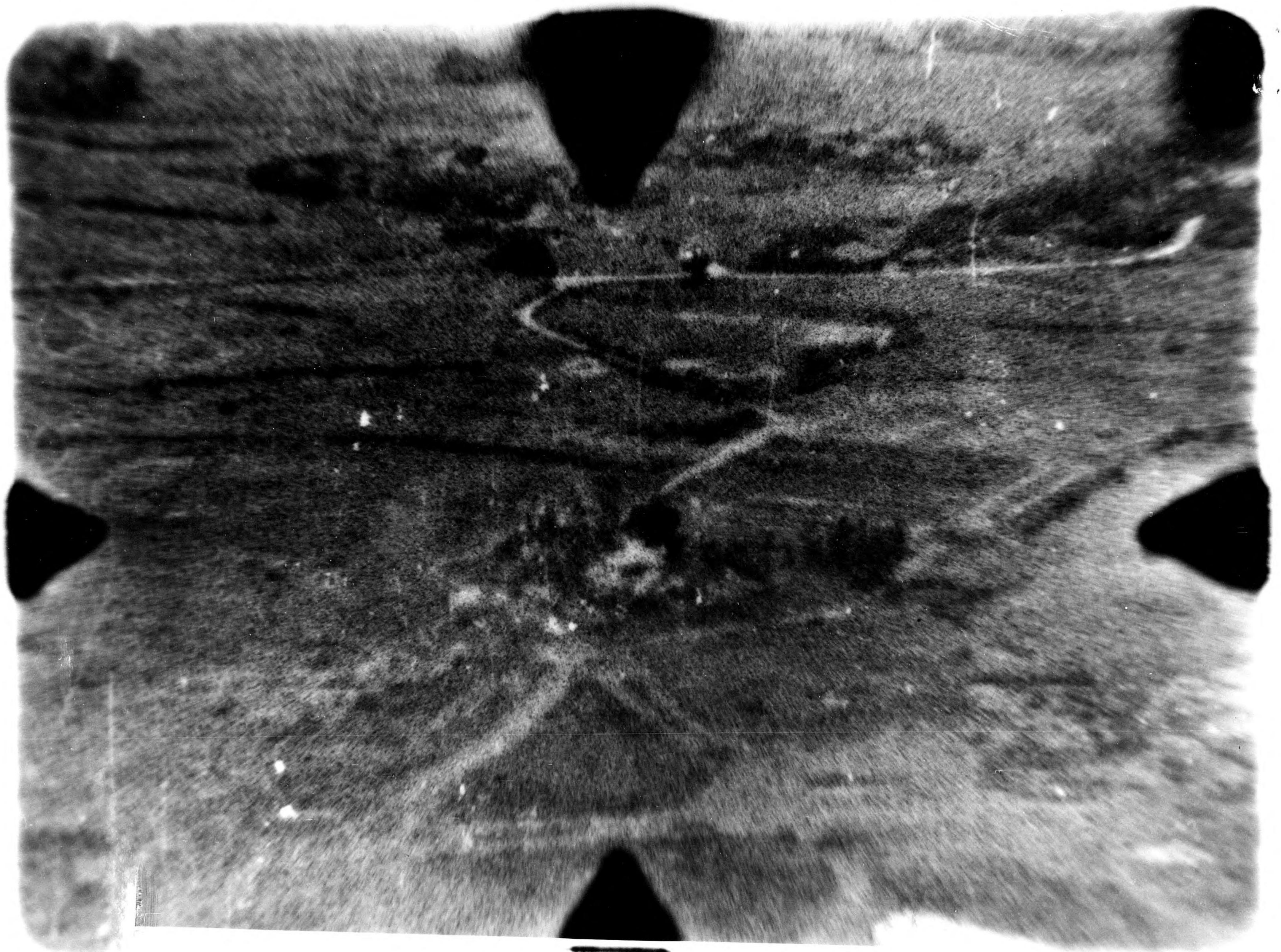
SIGNATURE
ACI Officer

RANK AND DUTY

SIGNATURE
Squadron Commander

RANK AND DUTY

DATE



This print shows the fuel dump shortly after ignition by the guns of
Lt.(jg) Melvin and Lt.(jg) Wickwire.

WICK

CVF-74