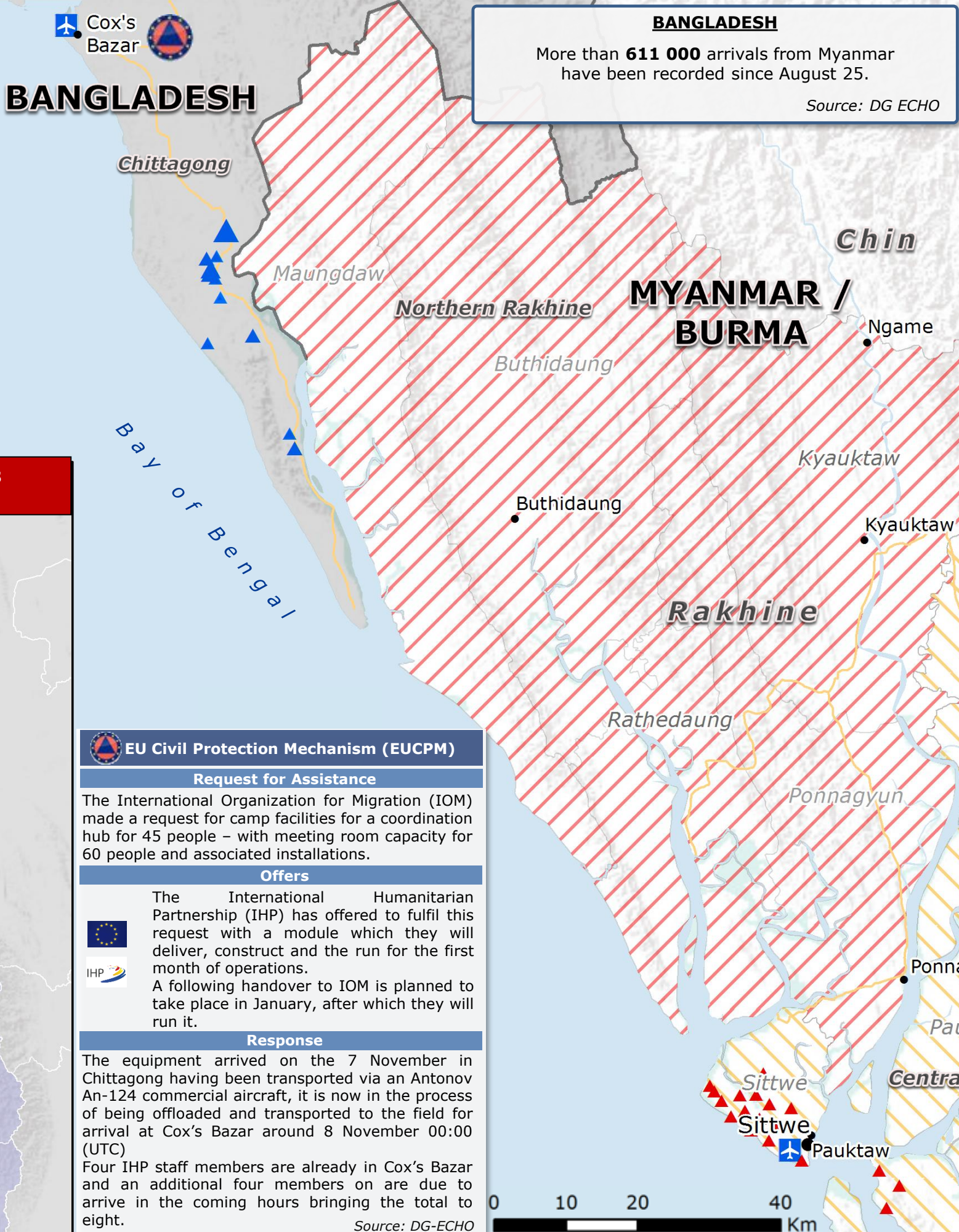
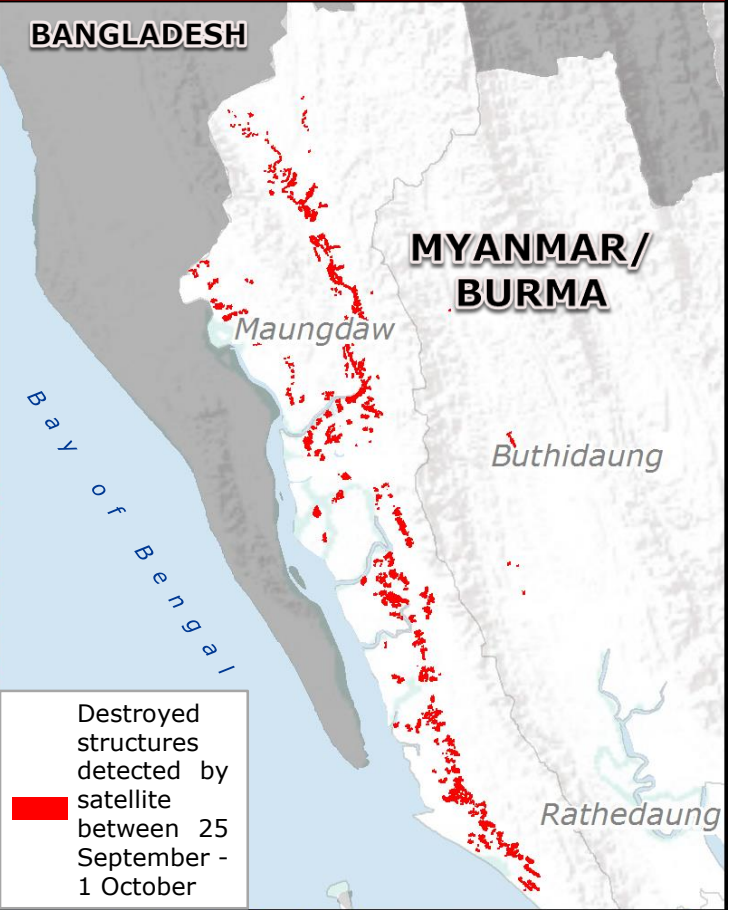


# Myanmar/Burma and Bangladesh | Rohingya crisis



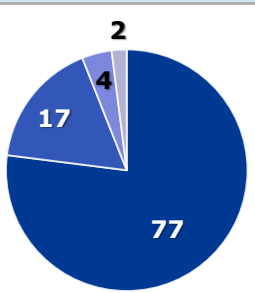
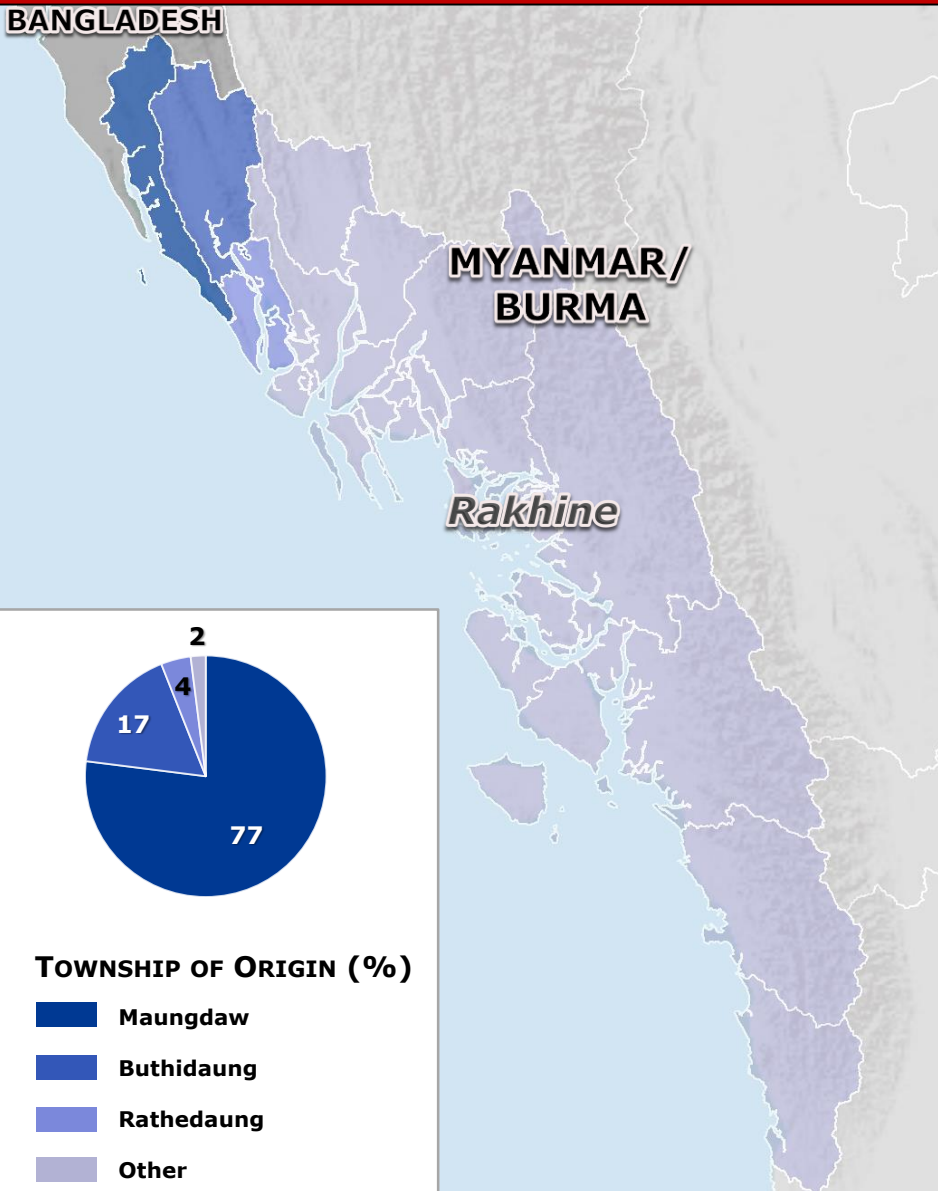
**BANGLADESH**  
 More than **611 000** arrivals from Myanmar have been recorded since August 25.  
 Source: DG ECHO

**DESTROYED BUILDINGS NORTHERN RAKHINE**  
 As of 1 October (Source: UNOSAT-UNITAR)



Destroyed structures detected by satellite between 25 September - 1 October

**TOWNSHIP OF ORIGIN OF ROHINGYA REFUGEES**  
 (Source: RRRC- UNHCR)



**TOWNSHIP OF ORIGIN (%)**

- Maungdaw
- Buthidaung
- Rathedaung
- Other

**EU Civil Protection Mechanism (EUCPM)**  
 Request for Assistance

The International Organization for Migration (IOM) made a request for camp facilities for a coordination hub for 45 people – with meeting room capacity for 60 people and associated installations.

**Offers**

The International Humanitarian Partnership (IHP) has offered to fulfil this request with a module which they will deliver, construct and the run for the first month of operations. A following handover to IOM is planned to take place in January, after which they will run it.

**Response**

The equipment arrived on the 7 November in Chittagong having been transported via an Antonov An-124 commercial aircraft, it is now in the process of being offloaded and transported to the field for arrival at Cox's Bazar around 8 November 00:00 (UTC). Four IHP staff members are already in Cox's Bazar and an additional four members are due to arrive in the coming hours bringing the total to eight.  
 Source: DG-ECHO

**MYANMAR/BURMA**

Humanitarian access in Northern Rakhine remains difficult; however in the past days agencies such as the World Food Program have been able to join the Red Cross Movement in providing assistance. In Central Rakhine assistance continues to be severely constrained.

The Red Cross Movement expects to reach approximately 180 000 people in Northern Rakhine by the end of the year. However, the movement has called the need to increase access for other agencies.  
 Source: DG ECHO

- Northern Rakhine
  - Central Rakhine
  - IDP site in Rakhine State\*\*
  - State boundary
  - International border
- Refugees camp and makeshift settlements\* by population:**
- 0 – 20 00
  - 20 000 – 35 000
  - 35 000 – 55 000
  - 55 000 – 457 000

