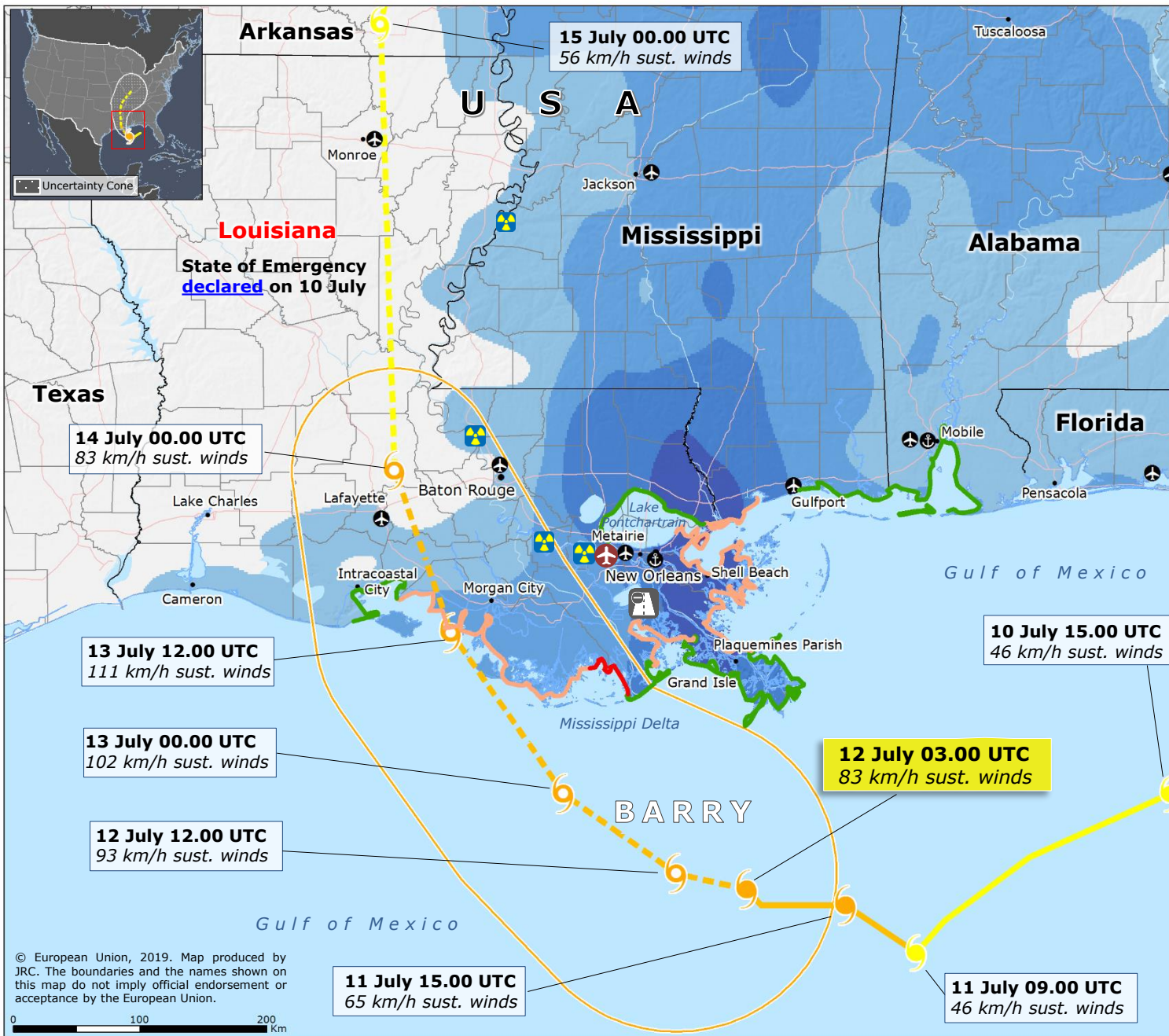


# USA | Tropical Cyclone BARRY



**TROPICAL CYCLONE (TC)**

- Observed position
- Forecast position

**INTENSITY**

- < 63 Km/h
- 63-118 Km/h
- > 118 Km/h

**WIND BUFFER**

- 93-118 km/h

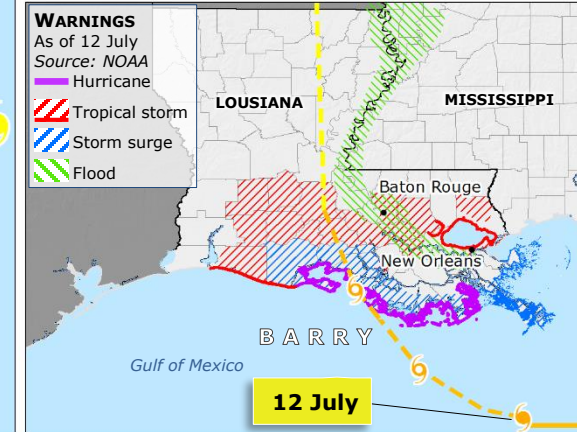
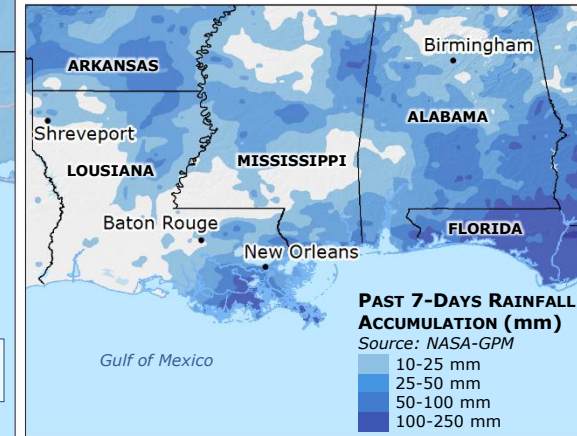
**STORM SURGE**  
Source: JRC, GDACS, ECMWF

- 0.3 – 1 m
- 1 – 2 m
- > 2m

**7-DAYS RAINFALL FORECAST (mm)**  
Source: NOAA-GFS

- 50-100
- 100-200
- 200-400
- 400-600
- >600

- Affected road/Traffic disruption
- Flights cancelled
- Main Port
- Main Airport
- Nuclear power plant
- County boundary



© European Union, 2019. Map produced by JRC. The boundaries and the names shown on this map do not imply official endorsement or acceptance by the European Union.

