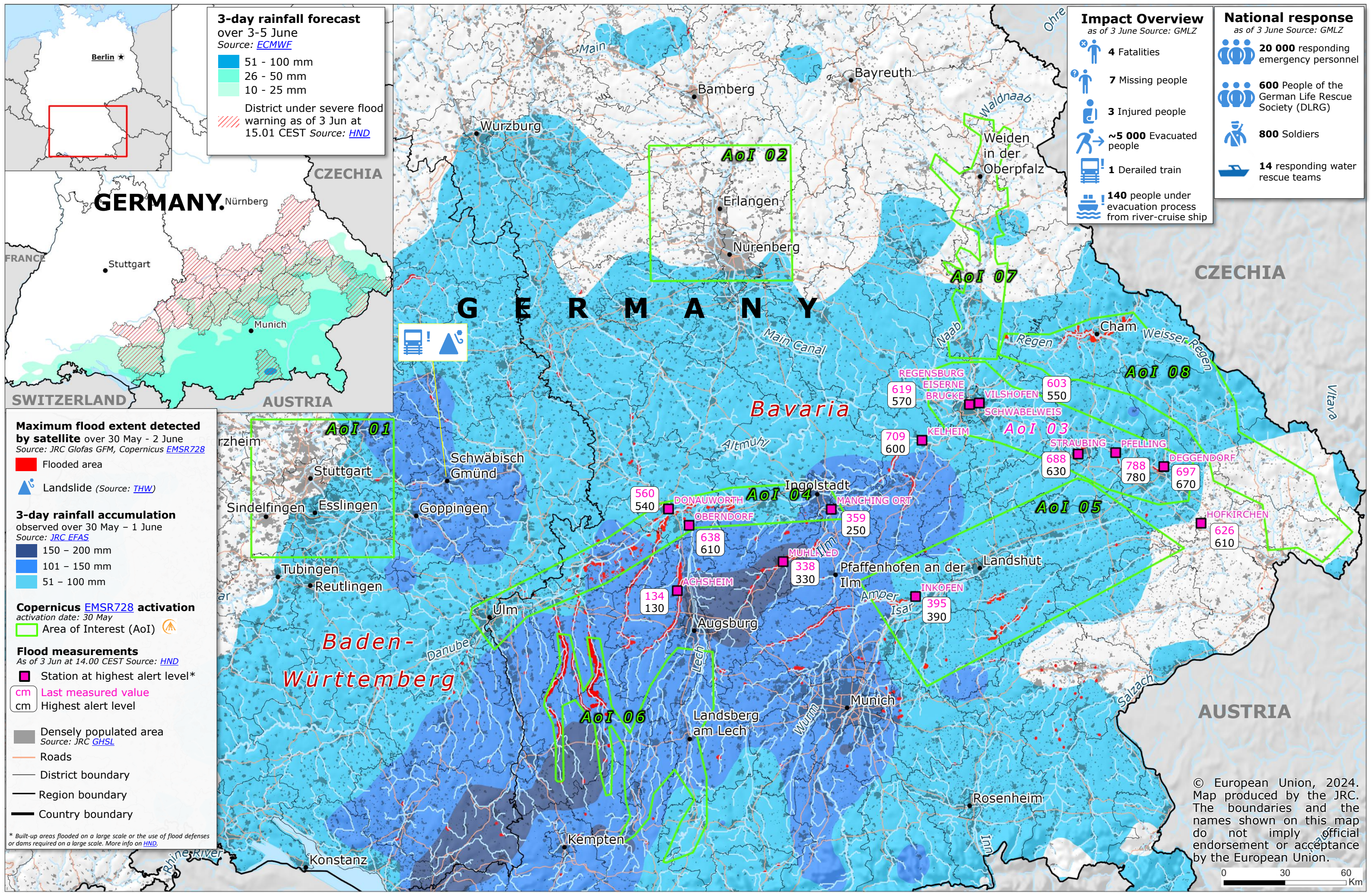


Germany | Severe weather and floods



3-day rainfall forecast over 3-5 June

Source: [ECMWF](#)

- 51 - 100 mm
- 26 - 50 mm
- 10 - 25 mm

District under severe flood warning as of 3 Jun at 15.01 CEST Source: [HND](#)

Maximum flood extent detected by satellite over 30 May - 2 June

Source: [JRC Glofas GFM](#), [Copernicus EMSR728](#)

- Flooded area
- Landslide (Source: [THW](#))

3-day rainfall accumulation observed over 30 May - 1 June

Source: [JRC EFAS](#)

- 150 - 200 mm
- 101 - 150 mm
- 51 - 100 mm

Copernicus EMSR728 activation activation date: 30 May

- Area of Interest (AoI)

Flood measurements As of 3 Jun at 14.00 CEST Source: [HND](#)

- Station at highest alert level*
- cm Last measured value
- cm Highest alert level

Legend:

- Densely populated area Source: [JRC GHSL](#)
- Roads
- District boundary
- Region boundary
- Country boundary

Impact Overview as of 3 June Source: GMLZ

- 4 Fatalities
- 7 Missing people
- 3 Injured people
- ~5 000 Evacuated people
- 1 Derailed train
- 140 people under evacuation process from river-cruise ship

National response as of 3 June Source: GMLZ

- 20 000 responding emergency personnel
- 600 People of the German Life Rescue Society (DLRG)
- 800 Soldiers
- 14 responding water rescue teams

© European Union, 2024. Map produced by the JRC. The boundaries and the names shown on this map do not imply official endorsement or acceptance by the European Union.

