

Historic, archived document

Do not assume content reflects current scientific knowledge, policies, or practices.



J. J. H.

GREGORY'S SEEDS

ESTABLISHED 1856

Marketed in Mass



1952 Special Prices for Everyone

15%
10%

We pay postage or freight, our option.

10% cash discount on cash order placed up to February 10

LIBRARY RECEIVED

★ JAN 31 1952 ★

U. S. Department of Agriculture

GREGORY'S GUARANTEE

1. That all seeds shall reach our customers in good condition.

2. We guarantee the vitality and purity of our seeds to the full amount of the purchase price. Your money back within one year if you are not satisfied with results.

3. It is agreed that in no case shall J. J. H. Gregory & Son be liable for more than purchase price of the seed. We make no charge for cloth bags.

Our business was started in 1856 and this ninety-fifth year we take pleasure in presenting our Special Prices to Everyone for consideration. We appreciate your patronage. It's our desire to work with you on a close, friendly basis for many years furnishing seed that will give you the best garden in your locality. You will receive vegetables of the highest quality from Gregory's seed. Where it is possible every family should plant a garden. What you cannot use green put up in glass jars for winter. European demands are bound to cause shortages. Protect yourselves against higher prices for vegetables in 1950 which are bound to continue. By not using colored cuts we save you money.

Please notice on orders received up to February 10 when cash accompanies orders we will allow a cash discount of 10 percent. Also we deliver to all parts of the country at these prices and make no charge for cloth bags. Special offer: *As long as our supply lasts.* If your order amounts to \$2.00 or more made up of pkts., ounces, and 1/4 pounds, we will include ~~two pamphlets free~~, ~~The Vegetable Gardener's Handbook and The A B C of Canning.~~ Both are up to date, well illustrated. Place orders early to obtain discount and pamphlets. No seeds better than Gregory's. It only takes a small piece of ground to produce enough to keep a family a good part of the year.

Yours for a prosperous season,

J. J. H. GREGORY & SON,
EDGAR GREGORY, Prop.

We are using the same price list as of 1951 with a 20% advance in prices

VEGETABLE SEED

DWARF GREEN POD BUSH BEANS

Plant 90 lbs. per acre

No.	Description	Pkg.	1/2 Lb.	Lb.	2 Lbs.	5 Lbs.
No. 30	BOUNTIFUL 48 days, Flat green Pods 6 in. long, stringless.	.15	.35	.60	1.10	2.35
No. 40	TENDERGREEN 50 days, Dark green round pods 6 to 7 in. long, stringless.	.15	.35	.65	1.10	2.35
No. 180	BURPEES IMP. BUSH LIMA 75 days, Pods 4 1/2 to 5 inches long, 4 to 5 beans in pod.	.15	.35	.65	1.30	2.75
No. 185	FORDHOOK LIMA 75 days, Pods 4 to 5 1/2 inches long, each pod 4 to 5 beans.	.15	.35	.65	1.50	2.75

DWARF YELLOW PODDED & SHELL BEANS

No.	Description	Pkg.	1/2 Lb.	Lb.	2 Lbs.	5 Lbs.
No. 28	NEW KIDNEY WAX 52 days, Thick meated entirely stringless 6 to 7 inches long. Excellent for canning.	.15	.35	.65	1.30	2.65
No. 102	BRITTLE WAX, or (ROUND POD KIDNEY) Pods 5 1/2 to 6 inches long, stringless and fiberless at all stages, round pod, 52 days.	.15	.35	.65	1.25	2.65
No. 155	SURE CROP, or (BOUNTIFUL WAX) 52 days, Yellow pods slightly curved 5 1/2 to 6 inches long, seeds black when ripe.	.15	.35	.60	1.10	2.65

No.	Description	Pkg.	1/2 Lb.	Lb.	2 Lbs.	5 Lbs.
No. 80	CARMINE POD, DWARF HORTICULTURAL 54 days, Green flat thick pods 5 inches long, Snap or shell.	.15	.35	.65	1.30	2.75
No. 90	RUST PROOF HORT. or FRENCH HORT. 70 days, Broad flat green pods 7 inches long splashed with carmine.	.15	.35	.65	1.30	2.75
No. 95	NEW HORTICULTURAL BUSH A long podded bean resembles the French Horticultural, Pods 6 to 10 inches long, bright colored, plant entirely without runners. A very attractive and very prolific variety.	.20	.35	.70	1.30	2.75

POLE BEANS

No.	Description	Pkg.	1/2 Lb.	Lb.	2 Lbs.	5 Lbs.
No. 210	MAMMOTH HORT. or WORCESTER 72 days, Shell beans, striped pods 7 inches long.	.15	.35	.65	1.20	
No. 205	KENTUCKY WONDER 65 days, Round green pods 7 1/2 to 8 inches long, stringless.	.15	.35	.65	1.20	
No. 235	KENTUCKY WONDER WAX 68 days, Flat wax pods, excellent, 7 to 8 inches.	.15	.35	.65	1.20	

BEETS

Plant 8 to 10 lbs. seed per acre.

	Oz.	¼ Lb.	1 Lb.	5 Lbs.
No. 300—IMP. CROSBY EGYPTIAN 45 days, quality excellent, fa- vorite with market gardeners.	.15	.40	1.20	5.00
No. 275—DETROIT DARK RED15	.40	1.20	5.00
55 days, 2nd early.				
No. 325—EARLY WONDER15	.40	1.20	5.00
45 days, first early, good color and quality.				
No. 350—LUCULLUS SWISS CHARD....	.15	.40	1.20	5.00
60 days, May be used like spin- ach or let stand for the mid rib and cook the same as aspara- gus.				

	Pkg.	Oz.	¼ Lb.	1 Lb.
No. 360—MANGEL MAMMOTH LONG RED10	.20	.55	1.60
110 days. Red skin, white flesh heavy cropper.				
No. 375—GIANT HALF SUGAR ROSE....	.10	.20	.55	1.60
90 days, Broad wedge shape, skin bright rose, flesh white, fine for stock.				
No. 392—SLUDSTRUP MANGEL10	.20	.55	1.60
95 days, between long and globe shape, skin yellow flesh white with yellow zones.				

BROCCOLI

No. 405—ITALIAN CALABRESSE15	.60	1.65
90 days, green sprouting. Cooked like spinach or Brussels sprouts.			

BRUSSELS SPROUTS

8 Ozs., for 2000 plants.

No. 408—LONG ISLAND IMPROVED....	.15	.75	2.25
120 days, Plants grow 20 inches tall, sprouts 1¼ to 1½ inches in diameter.			

CABBAGE

8 Ozs. will produce plants for an acre.

	Pkg.	½ Oz.	Oz.	¼ lb.	Lb.
No. 462—COPENHAGEN MARKET10	.25	.45	1.50	5.00
100 days, Heads globular 6 to 7 inches in diameter, 4 to 5 lbs. follows Golden Acre.					
No. 466—GOLDEN ACRE10	.25	.45	1.50	5.00
95 days, Earlier and smaller heads than Copenhagen. About 3½ lb. heads.					
No. 495—HOLLANDER (Short Stem Danish)10	.25	.45	1.25	4.00
140 days, Heads round and solid.					
No. 505—DANISH BALL HEAD10	.25	.45	1.25	4.00
140 days, Heads deep, very hard and compact. Tall stem.					
No. 510—PENN. STATE BALL HEAD..	.10	.25	.45	1.25	4.00
140 days, Short stem, flat globe shape.					
No. 515—IMP. AMERICAN SAVOY10	.25	.45	1.25	4.00
110 days, Dark green.					
No. 525—MAMMOTH ROCK RED.....	.10	.25	.45	1.25	4.00
120 days. Largest of red varie- ties, round solid heads.					

CHINESE CABBAGE

No. 538—WONG BOK10	.25	.45	1.00
Broad heads.				
No. 539—PEKING "PE-TSAI"10	.25	.45	1.00

CARROTS

No. 540—DANVERS10	.20	.30	.80	2.50
80 days, Rich dark orange col- or. Long and smooth, stump rooted.					
No. 542—HUTCHINSON15	.25	.40	.90	2.75
80 days, Orange color, long smooth stump rooted.					
No. 545—CHANTENAY10	.20	.30	.80	2.50
75 days, a popular bunching variety, stump rooted of best quality.					

CAULIFLOWER

	Pkt.	¼ Oz.	½ Oz.	Oz.
No. 590—GREGORY'S EXTRA EAR- LIEST20	1.00	1.65	3.00
90 days.				
No. 592—GREGORY'S SNOWBALL20	1.00	1.65	3.00
95 days, A super strain uni- form snow white heads.				
No. 600—DANISH GIANT or Dry Weather20	1.00	1.65	3.00
120 days, later than Snowball.				
No. 610—EARLY PURPLE25			
Superior in quality to Brussels Sprouts or Broccoli.				

CELERY

	Pkg.	½ Oz.	Oz.	¼ Lb.
No. 624—SUMMER PASCAL CELERY..	.15	1.25	2.00	
110-115 days. An early green celery of superior quality, stems to first joint 8 to 9 inches, blanches to a pure white, matures right after easy blanching.				
No. 625—GOLDEN PLUME or WON- DERFUL15	.50	1.10	2.50
115 days, An early variety that has replaced Golden Self Blanching, free from soft stalks.				
No. 635—CORNELL NO. 19.....	.15	.80	1.50	
The best yellow celery, self- blanching, with all the fine qual- ities of the Green Pascal cel- eries. Delicious to eat.				
No. 650—GIANT PASCAL (Utah Strain)	.15	.35	.75	2.00
135 days, Excellent winter vari- ety blanched under cover. Quality excellent.				

SWEET CORN

	Pkg.	½ Lb.	Lb.	2 Lbs.	5 Lbs.
No. 730—EXTRA EARLY GOLDEN MARKET15	.25	.45	.85	2.00
70 days, Ears seven inches long 12 to 14 rows, yellow ker- nels, quality excellent.					
No. 705—GOLDEN BANTAM15	.25	.45	.85	2.00
80 days, Ears 5½ to 6 inches long, with 8 rows. Very sweet.					
No. 785—GOLDEN HONEY or GOLDEN SUNSHINE10	.25	.45	.85	2.00
85 days. Often called Improved Golden Bantam, 12 to 14 rowed ears, Superb quality.					
No. 710—CARPENTERS GIANT GOLD- EN10	.25	.45	.85	2.00
90 days. Follows Golden Honey, often produces 2 or more ears to stalk. Quality Excellent.					

**Gregory saves you money on the
best quality seed.**

No. 746—WHIPPLES GIANT GOLDEN	.10	.25	.45	.85	2.00
85 days, Early, ears 7 to 8 inches, 12 to 16 rows, follow extra early varieties.					
No. 740—MAR CROSS 3915	.35	.65	1.20	3.00
75 days. Stalks 5 to 6 feet, ears 6 to 7 inches, 12 to 14 rows, Earlier than Golden Bantam. Wilt resistant.					
No. 748—GOLDEN CROSS BANTAM.....	.15	.35	.65	1.20	3.00
83 days. Follows Golden Ban- tam. 12 rows, 8 inch. Ears tender and delicious.					
No. 750—IOANA MIDSEASON HYBRID	.15	.35	.65	1.20	3.00
Follows Golden Cross Bantam. 12 to 14 rows, ears 8 inches, sweet, tender, yellow kernels.					

CUCUMBER

	Pkg.	½ Oz.	Oz.	¼ Lb.
No. 825—STRAIGHT EIGHT10	.20	.30	.85
Early, excellent cropper, about 8 inches, color medium green.				
No. 837—EXTRA SELECTED WHITE SPINE10	.20	.30	.85
60 days, Dark green, 8 inches long, crisp and solid. Very Pro- ductive.				
No. 845—FORDHOOK FAMOUS10	.20	.30	.85
58 days, White spine type, 8 to 14 inches long, heavy crop- per dark green.				
No. 847—DAVIS PERFECT10	.20	.30	.85
60 days, Strain of White Spine, long green fruits, 9 to 11 inches, crisp and solid, small seed cavity.				
MARKETER10	.20	.35	.90
Excellent dark green. A leader in the market. Fine for slicing. 7 to 9 inches long, crisp and heavy cropper.				
No. 850—IMPROVED LONG GREEN10	.20	.30	.85
70 days, Late long Black Spine type, used for local market and pickling.				
No. 852—NATIONAL PICKLING10	.20	.30	.85
55 days, Rich dark green, black spine type. When matured fruits 7 inches long. Developed for Nat. Canners, Picklers, Packers Assoc.				

DANDELION

No.	Description	Pkg.	½ Oz.	Oz.	¼ Lb.
No. 871	IMP. FRENCH THICK LEAVED Best for market growers.	.15	.50	.95	2.60

EGG PLANT

(1 Oz., for 1000 plants.)

No. 877	BLACK BEAUTY 125 days, a rich purple, earliest of the large fruited varieties.	.10	.40	.75	2.00
---------	---	-----	-----	-----	------

ENDIVE

No. 885	BROAD LEAVED BATAVIAN 100 days.	.10	.15	.25	.75
No. 884	FULL HEARTED 100 days, Large heads, hearts very deep.	.10	.15	.25	.75
No. 883	MOSS CURLED 100 days, Finer leaved than Batavian.	.10	.15	.25	.75

KALE

No.	Description	Pkg.	½ Oz.	Oz.	¼ Lb.
No. 886	DWARF GREEN CURLED SCOTCH	.10	.25	.45	1.25

KOHL-RABI

No. 890	EARLY WHITE VIENNA	.10	.25	.45	1.25
No. 891	LARGE PURPLE VIENNA	.10	.25	.45	1.25

LETTUCE

No. 896	BLACK SEEDED TENNIS BALL 71 days, Sure header slow to run to seed, quality excellent.	.10	.15	.25	.75
No. 895	MAY KING (W.S.) 65 days. Used for early planting. Globular heads, slow to run to seed.	.10	.15	.25	.75
No. 901	GRAND RAPIDS (B.S.) 60 days, Loose leaf, in some sections, used under glass. Bright green leaves.	.10	.15	.25	.75
No. 905	BLACK SEEDED SIMPSON (B.S.) 60 days, Golden yellow loose leaved. Stands summer heat well.	.10	.15	.25	.75
No. 906	EARLY PRIZE HEAD, (W.S.) 60 days, Bronze leaf, tender and fine flavor.	.10	.15	.25	.75
No. 900	SPECIAL WHITE BOSTON, (W.S.) 60 days, Lighter green than Big Boston, no brown edges.	.10	.15	.25	.75
No. 907	BIG BOSTON (W.S.) 78 days. Heads firm and solid large size, stands cool temperatures better than most varieties.	.10	.15	.25	.75
No. 914	NEW YORK No. 12 (W.S.) 87 days, Solid Cabbage head, light green leaves slightly curled edges. One of our customers had excellent success in greenhouse.	.10	.20	.35	1.00
No. 915	IMPERIAL No. 847 (B.S.) 87 days, An Iceberg type suitable for muck soil and uplands. Crops uniform in maturing. Heads round, large and solid.	.10	.20	.35	1.00
No. 921	WHITE PARIS COS. (W.S.)	.10	.15	.25	.75

MUSKMELONS

No.	Description	Pkg.	½ Oz.	Oz.	¼ Lb.
No. 925	ROCKY FORD 96 days, Rust resistant. Green fleshed heavily netted, no ribs. Quality very sweet 5½ by 5 inches.	.10	.20	.30	.75
No. 931	LAKE CHAMPLAIN 70 days, Golden Champion, Extra early medium netting. Very sweet of golden yellow color, 6 by 5½ inches.	.10	.15	.25	.75
No. 935	HEARTS OF GOLD 88 days, Finely netted, lightly ribbed, fine flavor.	.10	.15	.25	.75
No. 942	MILLER CREAM (OSAGE) 95 days, Flesh salmon color, very thick and sweet, small seed cavity, 8 by 6½ inches.	.10	.15	.25	.75
No. 941	HALE'S BEST No. 45 88 days, Mildew resistant, heavily netted, slightly oval salmon colored, quality excellent.	.10	.15	.25	.75
No. 940	BENDER'S SURPRISE 94 days, Salmon flesh, Delicious, large oblong netted variety, 8 by 6 inches.	.10	.15	.25	.75

WATERMELON

No.	Description	Pkg.	Oz.	¼ Lb.
No. 948	KLECKLEY'S SWEET, IMPROVED 87 days. Color dark mottled green often 22 inches long and weighs 50 lbs., Flesh rich red and exceedingly sweet.	.10	.25	.75
No. 949	STONE MOUNTAIN 85 days. Round slightly ribbed, skin light green, flesh deep crimson, about 45 lbs., quality excellent.	.10	.25	.75
No. 954	COLES EARLY 80 days. Early variety, will mature in every state. Delicious flesh deep red color, 12 by 11 inches, weight 20 lbs.	.10	.25	.75
No. 950	TOM WATSON 92 days, oblong dark green, 20 inches long, weight from 30 to 50 lbs., Flesh dark red, sweet.	.10	.25	.75
No. 970	COLORADO PRESERVING (Red Seed) 100 days. For preserving only, round.	.10	.30	.80

ONIONS (Short Crop)

No.	Description	Pkg.	½ Oz.	Oz.	¼ Lb.
No. 987	EARLY ROUND YELLOW DANVERS 105 days. Danvers is earlier than Southport Yellow Globe, does better on gravelly soil.	.15	.40	.75	2.25
No. 986	SOUTHPORT YELLOW GLOBE 110 days, Thicker skin than Danvers, a heavier cropper.	.15	.35	.70	2.25
No. 998	SOUTHPORT RED GLOBE 110 days, same shape as the Southport Yellow.	.15	.35	.65	2.00
No. 988	SOUTHPORT WHITE GLOBE 110 days, same shape as the Southport Yellow.	.15	.50	.85	2.25
No. 1001	YELLOW PRIZETAKER 120 days, Large straw colored onion, sold at fruit stands.	.15	.40	.75	1.85

ONION SETS (Short Crop)

	Lb. 2 Lbs. 5 Lbs.
YELLOW GLOBE	.40 .75 1.80
WHITE	.45 .80 1.90

PARSLEY

No.	Description	Pkg.	½ Oz.	Oz.	¼ Lb.	Lb.
No. 1008	DOUBLE MOSS CURLED 68 days. Dark green, curled.	.10	.15	.25	.75	

PARSNIP

5 Lbs. Seed for Acre.

No. 1013	ABBOTT'S HOLLOW CROWN	.10	.15	.25	.75	1.85
----------	-----------------------	-----	-----	-----	-----	------

PEAS

No.	Description	Pkg.	½ Lb.	2 Lbs.	5 Lbs.	10 Lbs.
No. 1025	LAXTON'S PROGRESS 60 days, Pod 4½ inches long, broad pointed, deep green color, 7 to 9 peas to pod. Vines 1½ to 2 feet tall.	.10	.30	.50	.95	2.25 4.00
No. 1038	GREGORY'S SURPRISE 47 days, Earliest wrinkled variety, delicious quality, Vines 20 inches tall.	.10	.30	.50	.95	2.25 4.00
No. 1026	LITTLE MARVEL 57 days. Grows 18 inches tall, very dark foliage, pods and peas very dark green. In Europe used as a forcing variety. Quality excellent.	.10	.30	.50	.95	2.25 4.00
No. 1027	PIONEER 57 days. Heavy cropper of long dark pointed pods with 7 to 9 peas per pod. A giant dwarf producing peas earlier than Gradus. Quality excellent.	.10	.30	.50	.95	2.25 4.00
No. 1034	GRADUS 60 days, Early large podded one of the first of this type introduced into this country. Excellent.	.10	.30	.50	.95	2.25 4.00
No. 1035	FREEZONIAN 60 days. Improvement over Thos. Laxton. Heavy cropper. Quality Excellent.	.15	.40	.75	1.40	3.25

	Pkg.	½Lb.	Lb.	2 Lbs.	5 Lbs.	10 Lbs.
No. 1024—GREGORY'S EXCELSIOR 60 days, took the place of Nott's Excelsior larger podded and a heavier cropper. Quality delicious. Pods 3½ to 4 inches.	.10	.30	.50	.95	2.25	4.00
No. 1041—WYOMING WONDER 75 days. Extra large podded 2 to 2¼ feet tall. Pod 5 to 6½ inches long, dark green containing 8 to 10 extra sweet peas.	.10	.30	.50	.95	2.25	4.00
No. 1040—THOMAS LAXTON An early large podded variety heavy cropper, vines 3 feet. Quality excellent.	.10	.30	.50	.95	2.25	4.00
No. 1042—EARLY MORN 55 days. Heavier cropper than Gradus, Larger pods. A good 4th of July pea. Quality delicious. Not as tall growing as Gradus.	.10	.30	.50	.95	2.25	4.00
No. 1060—IMPROVED TELEPHONE 70 days. Late, large dark green pods, vines 4½ feet tall, pods 4½ to 5 inches long, containing 8 to 10 peas in pod.	.10	.30	.50	.95	2.25	4.00
No. 1047—ALDERMAN 70 days, broad dark green straight pods heavy cropper. Vines 3½ feet tall, Quality excellent.	.10	.30	.50	.95	2.25	4.00

PEPPER

	Pkg.	½Oz.	Oz.	¼Lb.
No. 1066—RUBY KING 140 days, Excellent general crop. Pepper, fruit 4 lobed about 5 inches long, sweet and firm.	.15	.50	.80	
No. 1069—SQUASH or FLAT 130 days, Also called Cheese or Sunnybrook. Sweet type.	.15	.50	.80	
No. 1070—NEAPOLITAN 125 days, One of the earliest, fruits 3½ inches long by 1½ inches wide. Light green changing to red.	.15	.50	.80	
No. 1071—HARRIS EARLY GIANT 120 days. The earliest large pepper.	.15	.50	.80	
No. 1072—WORLD BEATER, SPECIAL 140 days, Thick, flesh, sweet one of the best for shipping. Matures with Ruby King, Fruits deep green turning to Scarlet red, very prolific.	.15	.50	.80	
No. 1080—LONG RED CAYENNE 112 days, 5 inches long by ½ inch thick, very hot. Easily dried for winter.	.15	.50	.80	

PUMPKINS

	Pkg.	Oz.	¼ Lb.	Lb.
No. 1082—SUGAR 75 days, Pie pumpkin.	.10	.20	.65	1.65
No. 1088—LARGE CONN., FIELD 90 days, Good for stock, size 18 to 20 inches.	.10	.25	.65	1.50
No. 1089—KING OF THE MAMMOTH 120 days, Grow to enormous size. Measure 18 inches in diameter with bright orange skin.	.10	.25	.65	1.75

RADISHES

12 to 15 lbs., will plant an acre.

	Pkg.	Oz.	¼ Lb.	Lb.
No. 1090—CRIMSON GIANT FORCING 32 days, sweet, crisp, a wonderful yielder. Globe shape 2 inches in diameter.	.10	.25	.55	1.00
No. 1092—SCARLET GLOBE 25 days. The popular variety. May be used in greenhouses, hot beds, or out doors. Globe shape.	.10	.25	.55	1.00
No. 1094—SCARLET TURNIP WHITE TIP 28 days, round 1½ inches in diameter bright scarlet top with white base.	.10	.25	.55	1.00
No. 1100—WHITE ICICLE 30 days. Grows 5 inches long. Icicle shape and free from side roots. Pure-white, delicious crisp.	.10	.25	.55	1.00
No. 1097—FRENCH BREAKFAST Olive shaped scarlet body and white root. A very popular variety.	.10	.25	.55	1.00

SPINACH

	Pkg.	Oz.	¼ Lb.	Lb.
No. 1110—BLOOMSDALE SAVOY, RE-SELECTED 40 days, valuable for spring and fall sowing.	.10	.15	.40	1.00
No. 1111—BLOOMSDALE SAVOY, LONG STANDING RUST RESISTANT 40 days.	.10	.15	.40	1.00
No. 1122—PRINCESS JULIANNA or LONG SEASON 50 days, Compact round leaved, very deep green.	.10	.15	.40	1.00
No. 1120—NEW ZEALAND 68 days. Resist heat, good to grow during summer and fall.	.10	.25	.55	1.50

SALSIFY, OYSTER PLANT

		½ Oz.		
No. 1124—MAMMOTH SANDWICH ISLAND (110 days)	.15	.50	.85	3.00

SQUASH

3 lbs. seed per acre.

No. 1126—GREEN DELICIOUS, OUR INTRODUCTION 106 days. As name suggest, delicious in quality, very fine texture.	.10	.20	.80	.85	2.50
No. 1132—GOLDEN DELICIOUS 115 days, Excellent for canning, grows larger than Green Delicious but not quite as good quality.	.10	.20	.35	.85	2.50
No. 1135—PROLIFIC MARROW 100 days, early and heavy cropper color bright orange red.	.10	.25	.75	2.00	
No. 1146—GIANT SUMMER CROOK-NECK 55 days, Early summer variety picked when in unripe stage.	.10	.25	.75	2.00	
No. 1128—DES MOINES or TABLE QUEEN 58 days, Also known as Acorn Squash, very dark green, ribbed, skin, turns to orange, Nice baked.	.10	.25	.75	2.00	
No. 1158—GOLDEN SUMMER STRAIGHTNECK 55 days, Fruits yellow uniform, few seeds.	.10	.25	.75	2.50	
No. 1144—GOLDEN HUBBARD 110 days, Hubbard shape orange red, color.	.10	.35	.85	2.50	
No. 1140—ORIGINAL HUBBARD, OUR INTRODUCTION 120 days, The Hubbard and its various strains has stood the test for 3 quarters of a century.	.10	.25	.75	2.00	
No. 1141—SYMMES BLUE HUBBARD 125 days, Our introduction extensively grown for winter storing.	.10	.35	.85	2.75	
No. 1142—WARTED HUBBARD 125 days. Grows larger than Original Hubbard.	.10	.25	.75	2.00	



No.		Pkg.	½ Oz.	Oz.	¼ Lb.	Lb.
No. 1145	BUTTERNUT SQUASH is rapidly becoming very popular. Matures in late summer and early fall. Fruit is 10 to 12 inches long; 4 to 5 inches at largest diameter, mostly all meat, flesh is dry and sweet. Excellent for pies. Also fine baked or boiled.	.15	.40	.75	2.25	
No. 1147	WARREN TURBAN, OUR INTRODUCTION 110 days. Planted extensively in New England for fall and early winter use. Hard shell, rich orange red color. Quality excellent.	.10		.25	.75	2.50
No. 1134	BUTTERCUP SQUASH 100 days. A small squash 4½ inches thick, 6½ inches in diameter, orange flesh dry and sweet. Excellent for family garden.	.15	.25	.45	.85	

TOMATOES

No. 1161	BONNY BEST (Certified) 120 days, Early, uniform in size, smooth bright scarlet, Very productive.	.15	.55	.95	2.00	
No. 1173	JOHN BAER (Certified) 125 days, Globular, smooth, scarlet, uniform in shape, ripens evenly up to stem. Good cropper.	.10	.50	.80	2.25	
No. 1162	PRITCHARD, (Scarlet Cropper) (Certified) 112 days, Product of U. S. Dept. of Agriculture heavy yielder, Globe shape, solid and smooth, wilt resistant.	.10	.50	.80	2.25	
No. 1180	MARGLOBE (Certified) 115 days, Originated by U. S. Dept. of Agriculture, Disease resistant. Large globe shaped, deep scarlet fruits solid and meaty.	.10	.50	.80	2.25	
No. 1165	RUTGERS (Certified) 115 days, Globe shape, scarlet red color, resembles Marglobe. A New Jersey introduction.	.10	.45	.80	2.25	
No. 1164	STONE (Certified) 150 days, The old standard late variety. Large, bright scarlet, spherical and very smooth.	.10	.50	.80	2.25	
No. 1169	BURBANK An early red variety sent out by Luther Burbank.	.25	.40	.70		
No. 1175	COMET For greenhouse and trellis growing. Used extensively in eastern Massachusetts. Fruits smooth bright red, suitable in size for salads.	.20	.90	1.65		

	Pkt.	¼ Oz.	½ Oz.	Oz.
GREGORY20	.75	1.35	2.50

The earliest red variety, uniform. Good cropper having a long season. In Maine at an experimental station, about 30 samples of tomatoes were planted comprising twelve plants each. Early yields up to August 17. The Gregory Tomato outyielded all others, being first in rank on the entire list. Yield 13 lbs., 4 ozs. The nearest was 12 lbs., 3 ozs.

TURNIPS

No.		Pkg.	Oz.	¼ Lb.	Lb.
No. 1190	EXTRA EARLY WHITE MILAN 40 days, The very best extra early flat top white.	.10	.20	.60	1.65
No. 1192	PURPLE TOP WHITE MILAN 40 days, best extra early flat purple top.	.10	.20	.60	1.65
No. 1194	GOLDEN BALL 60 days. Globe shape, flesh firm, fruit fine grained. Good keeper matures earlier than other globe varieties.	.10	.20	.50	1.50
No. 1196	WHITE EGG 70 days. Smooth, white, growing half out of ground. Flavor sweet and mild. Fine keeper. Excellent for winter.	.10	.20	.50	1.50

No.		Pkg.	Oz.	¼ Lb.	Lb.
No. 1200	PURPLE TOP WHITE GLOBE 55 days, Early round, grows part above ground. Grown extensively by market gardeners.	.10	.20	.50	1.50
No. 1204	IMPROVED YELLOW GLOBE 75 days, Almost round, Skin pale amber, flesh is creamy yellow.	.10	.20	.50	1.50

RUTABAGAS

No. 1220	AMERICAN 90 days, Nearly globe shape, slightly oblong, yellow flesh of superior quality. Excellent for both stock and family use.	.10	.20	.50	1.50
No. 1221	LONG ISLAND SHORT NECK 90 days. Uniform in shape. A heavy yielder, Roots large round, small neck, Yellow purple top, firm and sweet.	.10	.20	.50	1.50
No. 1225	UNIVERSAL or CANADIAN GEM 90 days. Largest of the round purple top varieties. Heavy cropper, yellow flesh.	.10	.25	.75	1.65
No. 1206	MACOMBER (IMPROVED WHITE ROCK) 90 days. Best of the white strains. Tinged with green at the top. Quality excellent.	.10	.25	.75	2.00

LAWN SEED (Highest Quality)

Superfine for Sunny Spots, lb. \$1.20; 5 lbs. \$6.00
Superfine for Shady Spots, lb. \$1.40; 5 lbs. \$6.75

It's a good idea to scatter lawn seed over your lawn each spring. Usually there are bare spots that can be renewed by this method. Lawns need plant food every year.

Plant Gregory seed and have the best garden in your locality. We save you money and give quality.

Timothy—Lb. 5c; 15 lbs. \$7.00; 45 lbs. \$18.00
Red Top—½ lb. 30c; lb. \$1.40; 5 lbs. \$6.00; 10 lbs. \$13.00
Kentucky Blue Grass—½ lb. 90c; lb. \$1.60; 5 lbs. \$7.00

Write for prepaid prices upon the following:

Clover Medium Red Alfalfa Grimm
Clover Ladino White Dwarf Essex Rape
Clover Alsike Timothy and Alsike
Clover Mixed

FLOWER SEED

AGERATUM (A)

1410	Little Dorrit, Azure Blue. 6 inches. A fine bedding plant covered with feathery blue flowers from early summer till frost. Valuable for potsPkt. .10
1411	Blue Perfection, 8 inches. Large heads of deep amethyst-blue flowersPkt. .10

ALYSSUM, SWEET (A)

Excellent for beds, edgings, etc. Fine for bouquets.

1414	Little Gem. 4 inches. Dwarf and compact, with plants a mass of white from spring until frost.....Pkt. .10
1416	WhitePkt. .10
1417	Lilac Queen (Compactum). Flowers open white turning to a pleasing shade of light lavender—6 inches.....Pkt. .10

GREGORY'S SUPER LATE BRANCHING ASTERS

Selected with the greatest care. Their extremely long stems make them ideal for cutting and bouquets. They fill in a gap between the early flowering varieties and Chrysanthemums.

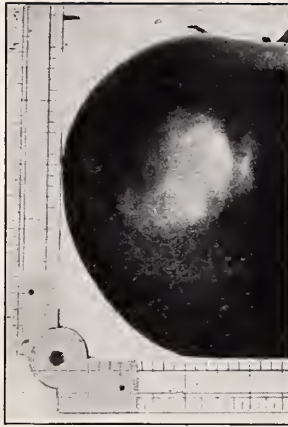
1445A	MixedPk. .10
-------	---------------------------

IMPROVED GREGO'S GIANT COMET

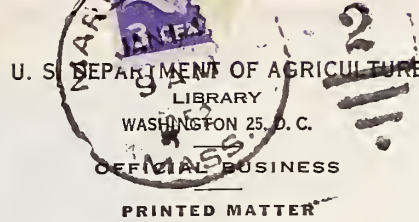
The Grego Giant Comet Asters are admired by everyone who sees them. The flowers are immense in size, measuring from 4 to 6 inches across. Grow from 18 inches to 2 feet high, producing on each plant from 20 to 30 magnificent flowers on long stems.

1446A	MixedPkt. 10c; ¼ oz. 35c; ½ oz. 55c
-------	--

J. J. H. GREGORY & SON
4 MARKET SQUARE
MARBLEHEAD, MASS.



In Maine, at an experimental fall crop up to August 17, the Gregory Tomato next nearest was 12 lbs., 3 oz.



PENALTY FOR PRIVATE USE TO AVOID
PAYMENT OF POSTAGE, \$300
(GPO)

Library, U. S. Dept of Agriculture,
WASHINGTON 25, D. C.

olds
The

ROYAL ASTERS

An early flowering form of our superb Late Branching. Valuable for beds and borders. Their long stems make them excellent for bouquets.
1480 MixedPkt. .10

CALENDULA. Tagetes (A)

CALENDULA OR POT MARIGOLDS, 1 FOOT

- 1774 Orange King. (Orange Red Double)..... .10
- 1775 Lemon Queen. (Lemon Yellow Double)..... .10
- 1776 Balls Orange. Very large, especially selected for winter flowering..... .10
- 1776A Campfire. Dark Orange scarlet sheen..... .10
- 1777 Orange Shaggy. Fringed petals..... .15

CANDYTUFT (A) (Bedding Bouquets)

- 1544 Rose Cardinal. Very striking color. Excellent with Sweet Alyssum for bordersPkg. .10
- 1546 Giant Empress. Free growing, immense trusses of white flowersPkg. .10
- 1548 MixedPkg. .10

CANTERBURY BELLS (B)

- 1552 Single, MixedPkg. .10
- 1554 Double, MixedPkg. .10
- 1556 Calycanthema. Splendid, Mixed. "Cup and Saucer." This questionably is the finest type of this old-fashioned prized garden plant.....

CENTAUREA (A)

- 1558 Bachelor's Button. Cyanus. Shades of pink bl double mixedPkg. .10
- 1559 Double Blue. Flowers semi-double.....Pkg. .10
- 1563 Gregory's Special Mixture, Sweet Sultan's.....Pkg. .10

COSMOS (A)

- Gregory's Extra Early Mammoth Single. Flowers usually from 4 to 5 inches across.
- Autumn flowering plant, beautiful foliage, 6 to 8 feet high, covered with very large, single, Daisy-like flowers, in shades of rose, purple, and white. Fine for cutting. Sow in April in pots, or hotbed, and transplant 1 foot apart.
- 1621 MixedPkg. .10
- Gregory Late Mammoth Flowers. Blooms two weeks later than the early flowering.
- 1622 Mixed. All ColorsPkg. .10

LARKSPUR (A)

- Beautiful, hardy annuals, producing dense spikes.
- 1748 Finest Mixed. Very beautiful long spikes of flowers in the most delicate colorsPkg. .10
- 1750 Giant Hyacinth flowered. An improved type. 3 feet.....Pkg. .10

MARIGOLD Tagetes (A)

Showy, 1 to 3 feet high, adapted to garden culture, blooming profusely.

DOUBLE AFRICAN, 3 FEET

- 1788 Giant Orange. Full double. Enormous.....Pkg. .15
- 1779 Giant Lemon. Full double.....Pkg. .15

- 1780 Eldorado Mixture. Enormous flower.....Pkg. .15
- 1782 Double Dwarf. Mixed.....Pkg. .10
- 1783 Miniature Golden Yellow. 9 inches.....Pkg. .10

NASTURTIUM (A)

- 1784 Double Golden Gleam. Sweet Scented.....
..... 1/2 oz., 25c; oz., 45c; Pkg. .10
- 1785 Double Gleam. Hybrid Mixed, continuous blossoms till frost
..... 1/2 oz., 25c; oz., 45c; Pkg. .10

PETUNIA (P)

- 1900 Giant Fluffy Ruffles. Window, boxed and for bedding. (Single). The most delicate ruffled and fringed of all petunias, slightly smaller than the Giants of California, but more ruffled. Mixed ColorsPkg. .35
- 1910 FINE MIXED, Balcony.....Pkg. .10
- 1912 Giants of California. Flowers very large, in every conceivable shade of crimson, violet, lavender.....Pkg. .25
- 1915 Rosy Morn. Soft carmine pink, with white throat; makes a very dainty and effective border.....Pkg. .10

PORTULACA (A)

Sow in warm, light, soil, thin plants to 4 inches.

- 1993 Single. Best Mixed.....Pkg. .10
- 1994 Large flowered. Best. Double.....Pkg. .10

SCABIOSA (MOURNING BRIDE)

A class of beautiful hardy annuals from 1 to 2 feet high; valuable for cutting, remain a long time in bloom.

- 1807 MixedPkg. .10
- 1808 Cockade. Rounded beehive type, blue.....Pkg. .15

SNAPDRAGON. Antirrhinum (P)

Easiest culture, flowering the first season from seed, yielding an abundance of flowers for cutting. Plants need protection in winter.

- 2034 Tall. Finest Mixed.....Pkg. .10
- 2036 Giant. Finest Mixed. This new strain which far exceeds in size and beauty the old variety, makes a magnificent display in the garden. Seed may be started in the house or sown in open groundPkg. .15
- 2037 Semi Dwarf. Finest Mixed. Large range of many beautiful colors. Grows about 18 inches.....Pkg. .15

GIANT RUFFLED SPENCER SWEET PEAS

Most Beautiful of All Sweet Peas

The mixture of Spencer varieties that we offer, is a splendid well-blended mixture of all true Spencer types only. Producing from three to four flowers on a stem, beautifully waved and fluted. Stems 10 to 18 inches in length.....Pkt., 10c; oz. 50c; 1/4 lb., \$1.50; 1 lb., \$4.50

GIANTS OF CALIFORNIA ZINNIA

Splendid hardy annuals, succeeding well in any soil and making a brilliant show. Flowers will retain their beauty for weeks, and will produce until frost. Can start seed in the house and transplant to garden in May, or start out doors. Leave plants two feet apart.

- 2264A Giant Zinnia. Mixed. Extremely double.....Pkt. .10
- 2265 Giant Dahlia Flowered Mixed.....Pkg. .10
- 2266 Lilliput Double, 1-1 1/2 ft., mixed.....Pkg. .10

