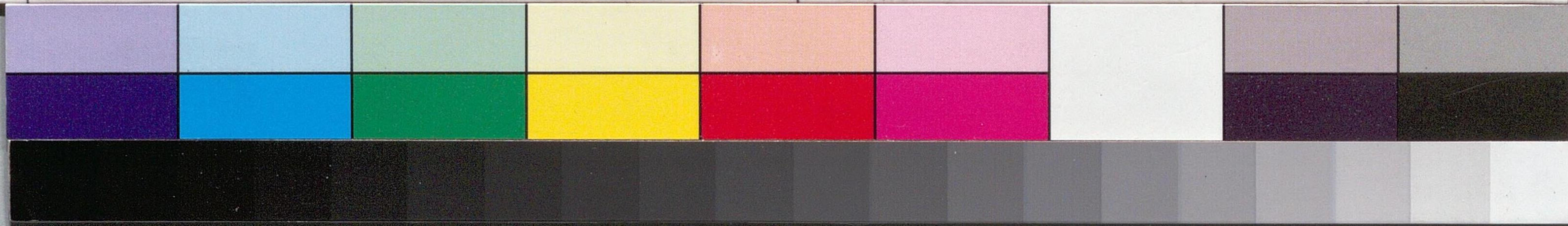


Handwritten text on a piece of aged, yellowish paper. The text is written vertically in black ink. The characters are highly stylized and appear to be in cursive (sōsho). The main text is arranged in a vertical column, with some characters appearing to be '柳' (Willow) and '三' (Three). There are also some faint, larger characters visible on the left side of the paper, possibly '柳' and '三'.

柳  
三



国立国会図書館 尾崎三良関係文書 106-116

乞 示 恩 借 札 列

冊 法 乃 已 年 也

風 氣 心 如 子 然

望 自 安 女 矣

之 日 處 所

未 竟

尾 崎 三 良 啟