

## GHQ/SCAP Records (RG 331, National Archives and Records Service)

## Description of contents

- (1) Box no. 345
- (2) Folder title/number: (19)  
Nanao B.P. Nanao, Ishikawa Prefecture - Tokai 69
- (3) Date: Aug. 1948
- (4) Subject:
- | Classification | Type of record |
|----------------|----------------|
| 9424           | e, r           |
- (5) Item description and comment:  
i) Ishikawa-Ken  
ii) Nanao B.P.: Nanao Branch Prison
- (6) Reproduction:  Yes  No
- (7) Film no. Sheet no.

(Compiled by *National Diet Library*)



31 August 1948

NANAO BRANCH OF THE KANAZAWA PRISON

Inspected by Major Tremper and Captain Fomenko on 17 August 1948. This is a small detention house, of wood construction; old but spotlessly clean and in a good state of repair. Rated capacity is 15; population 22, all male, 2 of whom are juveniles. The length of time that inmates are kept in detention is maintained at a minimum level. All cases in detention over 7 days have either been tried, are in process of trial or have had a trial date designated within 10 days. The longest time any one particular case has been awaiting trial is 37 days, and this case has been given a trial date on 25 August 1948.

All inmates are given exercise periods within the inclosure out of doors, for periods of 30 minutes each morning and afternoon during clement weather.

Custodial and office personnel consist of 8 people plus one servant. The suggestion of using one or two sentenced prisoners for housekeeping personnel was made to the warden who accompanied the inspecting officers, and he will take it under consideration.

During the past 12 months there was one escape. This was accomplished by the inmate unscrewing the inset bar plate on the cell door, leaving through the opening. To discard the bar plate and block the opening would stop ventilation and light, so no change was considered to construct more secure cells since vigilance on the part of guards in such a small place is considered a sufficient security measure.

Advice was given to chief of custody regarding recommended plans to quell disorders from outside groups and for establishing an effective fire prevention and fire fighting plan.

Rating: Very satisfactory.

C. E. TREMPER  
Major CMP

L. J. FOMENKO  
Captain FA



REFERENCE

See PRISON SURVEY, ISHIKAWA PREFECTURE (31 Dec. 1945) filed in Kanazawa Prison file.

A.D.N.



11  
Nanao B.P.

1. Office
2. Ware House
3. Solitary Block
4. Official Residence
5. Ware House



支所配置圖

所名	七尾市
所在地	石川県七尾市
縮尺	
製図者名	吉井
製図年月	昭和二十

凡例	番号	名称	坪数	建坪数					
	1	事務所	98坪						
	2	雑物置	13坪						
	3	独居舎	69坪	6.6坪					
	4	宿舎	69坪						
	5	住宅	74坪						

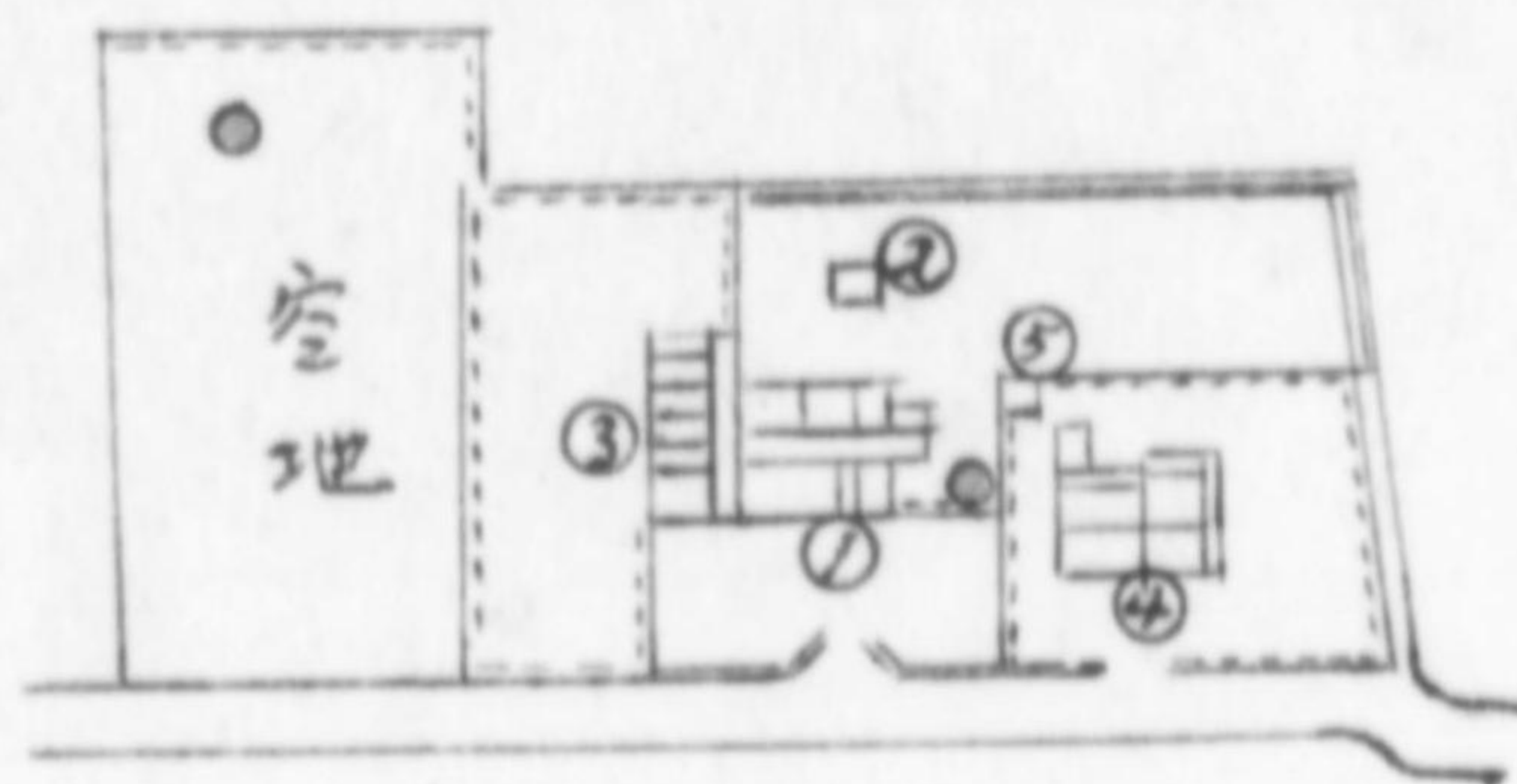


# 七尾刑務支所配置圖

所名	七尾刑務支所
所在地	石川県七尾市藤橋三十二番地
縮尺	$\frac{1}{2000}$
製図者名	吉井徳太郎
製図年月	昭和二十一年五月一日

敷地總坪数 一八八五・一（五七〇・三坪）  
 官舎敷地 五二六・一（一五四・七坪）

凡例  
 外圍障板延長 六九・三米  
 高廿 二七米  
 井戸



坪数	堂坪数				
98坪					
13坪					
69坪	6.6坪				
69坪					
24坪					