

VMB-423

158  
9

Report # 211

HC (9)

5



## AIRCRAFT ACTION REPORT

RESTRICTED  
(Reclassify when filled out)

CONFIDENTIAL

### I. GENERAL

(a) Unit Reporting **VMB-123** (b) Based on or at **Green Island** (c) Report No. **211**  
 (d) Take off: Date **19 February 1945** Time (LZT) **0830-0833** (Zone); Lat. **04°32'** Long. **154°14'**  
 (e) Mission **Medium altitude daylight attack on Rabaul target # 10A, New Britain** (f) Time of Return **1010-1025** (Zone)

### II. OWN AIRCRAFT OFFICIALLY COVERED BY THIS REPORT.

TYPE (a)	SQUADRON (b)	NUMBER			BOMBS AND TORPEDOES CARRIED (PER PLANE) (f)	FUZE, SETTING (g)
		TAKING OFF (c)	ENGAGING ENEMY A/C (d)	ATTACKING TARGET (e)		
<b>PBJ-3J</b>	<b>VMB423</b>	<b>4</b>	<b>None</b>	<b>4</b>	<b>2 X 1000 # GP</b>	<b>AN-M-100A2</b>
<b>PBJ-1D</b>	<b>VMB423</b>	<b>3</b>	<b>None</b>	<b>3</b>	<b>2 X 1000 # GP</b>	<b>AN-M-100A2</b>

### III. OTHER U. S. OR ALLIED AIRCRAFT EMPLOYED IN THIS OPERATION.

TYPE	SQUADRON	NUMBER	BASE	TYPE	SQUADRON	NUMBER	BASE
<b>PV-3</b>	<b>NZ-2</b>	<b>8</b>	<b>Green Island</b>				

### IV. ENEMY AIRCRAFT OBSERVED OR ENGAGED (By Own Aircraft Listed in II Only).

(a) TYPE	(b) NO OBSERVED	(c) NO. ENGAGING OWN A/C	(d) TIME ENCOUNTERED	(e) LOCATION OF ENCOUNTER	(f) BOMBS, TORPEDOES CARRIED; GUNS OBSERVED	(g) CAMOUFLAGE AND MARKING
<b>None</b>			(ZONE)			
			(ZONE)			
			(ZONE)			

(h) Apparent Enemy Mission(s) \_\_\_\_\_  
 Did Any Part of \_\_\_\_\_  
 (i) Encounter(s) Occur in Clouds? \_\_\_\_\_ If so, Describe Clouds \_\_\_\_\_ (BASE IN FEET, TYPE AND TENTHS OF COVER)  
 Time of Day and Brilliance \_\_\_\_\_  
 (j) of Sun or Moon \_\_\_\_\_ (NIGHT, BRIGHT MOON; DAY, OVERCAST; ETC.) (k) Visibility \_\_\_\_\_ (MILES)

### V. ENEMY AIRCRAFT DESTROYED OR DAMAGED IN AIR (By Own Aircraft Listed in II Only).

(a) TYPE ENEMY A/C	(b) DESTROYED OR DAMAGED BY:				(c) WHERE HIT, ANGLE	(d) DAMAGE CLAIMED
	TYPE A/C	SQUADRON	PILOT OR GUNNER	GUNS USED		
<b>None</b>						



# AIRCRAFT ACTION REPORT

RESTRICTED  
(Reclassify when filled out)

**CONFIDENTIAL**  
REPORT No. **211**

### VI. LOSS OR DAMAGE, COMBAT OR OPERATIONAL, OF OWN AIRCRAFT (of those listed in II only).

(a) TYPE OWN A/C	(b) SQUADRON	(c) CAUSE: TYPE ENEMY A/C, TYPE GUN, OR OPERATIONAL CAUSE	(d) WHERE HIT, ANGLE (List armor, self-sealing tanks, equipment hit)	(e) EXTENT OF LOSS OR DAMAGE (Give Bureau serial number of planes destroyed)
1	None			
2				
3				
4				
5				
6				
7				
8				
9				
10				
11				
12				
13				
14				

### VII. PERSONNEL CASUALTIES (in aircraft listed in II only; identify with planes listed in VI by Nos. at left).

(a) NO.	(b) SQUADRON	(c) NAME, RANK OR RATING	(d) CAUSE	(e) CONDITION OR STATUS
None				

### VIII. RANGE, FUEL, AND AMMUNITION DATA FOR PLANES RETURNING

(a) TYPE A/C	(b) MILES OUT	(c) MILES RETURN	(d) AV. HOURS IN AIR	(e) AV. FUEL LOADED	(f) AV. FUEL CONSUMED	(g) TOTAL AMMUNITION EXPENDED				(h) NO. OF PLANES RETURNING
						.30	.50	20MM	MM	
<b>PBJ-1J</b>	<b>153</b>	<b>116</b>	<b>1hr40'</b>	<b>1016</b>	<b>352</b>	<b>None</b>	<b>None</b>	<b>None</b>	<b>None</b>	<b>4</b>
<b>PBJ-1D</b>	<b>153</b>	<b>116</b>	<b>1hr40'</b>	<b>1016</b>	<b>352</b>	<b>None</b>	<b>None</b>	<b>None</b>	<b>None</b>	<b>3</b>

### IX. ENEMY ANTI-AIRCRAFT ENCOUNTERED (Check one block on each line).

CALIBER	NONE	MEAGER	MODERATE	INTENSE
HEAVY — Time-fused shells, 75mm and over	XX			
MEDIUM — Impact-fused shells, 20mm-50mm	XX			
LIGHT — Machine gun bullets, 6.5mm-13.2mm	XX			

### X. COMPARATIVE PERFORMANCE, OWN AND ENEMY AIRCRAFT (use check list at left).

- SPEED, CLIMB,  
at various altitudes

TURNS

DIVES

CEILINGS

RANGE

PROTECTION

ARMAMENT

**No enemy aircraft encountered.**



# AIRCRAFT ACTION REPORT

RESTRICTED  
(Reclassify when filled out)

(OMIT THIS SHEET IF NO ATTACK WAS MADE)

**CONFIDENTIAL**  
REPORT No **211**

## XI. ATTACK ON ENEMY SHIPS OR GROUND OBJECTIVES (By Own Aircraft Listed in II Only).

- (a) Target(s) and Location(s) **Rabaul target #10A, New Britain** Time Over Target(s) **092640932** (Zone)  
(FOR SHIPS INCLUDE ALL IN AREA UNDER ATTACK)
- (c) Clouds Over Target **.8 cover**  
(BASE IN FEET, TYPE AND TENTHS OF COVER)
- (d) Visibility of Target **Partially obscured by clouds** (e) Visibility **15 miles**  
(CLEAR, HAZY, PARTIALLY OBSCURED BY CLOUDS, ETC.) (MILES)
- (f) Bombing Tactics: Type **Level** Bomb Sight Used **Mark 15**  
(LEVEL, GLIDE OR DIVE) (TYPE)
- Bombs Dropped per Run **2** Spacing **170 feet** Altitude of Bomb Release **10300 & 11000**  
(NUMBER) (FEET) (FEET)
- (g) Number of Enemy Aircraft Hit on Ground: Destroyed **None** Probably Destroyed **None** Damaged **None**

(h) AIMING POINT	(i) DIMENSIONS OR TONNAGE	(j) NO. A/C ATTACKING (k) SQUADRON	(l) BOMBS AND AMMUNITION EXPENDED, EACH AIMING POINT	(m) NO. HITS ON Aiming Point	(n) DAMAGE (None, slight, serious, destroyed, or sunk)
1 <b>Rabaul target # 10A</b>		<b>7</b> <b>VMB-423</b>	<b>14 X 1000 GP</b>	<b>See (c)</b>	
2					
3					
4					
5					
6					
7					
8					

(o) **RESULTS:** (For all hits claimed on ship targets and for land targets of special interest, draw diagram, top or side view or both, as appropriate, showing type and location of hits. For all targets give location and effect of hits, and identify by numbers above. Use additional sheets if necessary.)

**All bombs hit in the target area. The pattern of the bomb hits in relation to the target are shown on the attached photographs.**

(p) Were Photographs Taken? **Yes** Photographs of Damage, When Taken, Should Be Attached By Staple



# AIRCRAFT ACTION REPORT

RESTRICTED  
(Reclassify when filled out)  
**CONFIDENTIAL**  
REPORT No 211

**XIII. MATERIAL DATA.** (Comment freely on performance or suitability, following check list at left. Use additional sheets if necessary).

- ARMAMENT**
  - Guns, Gunsights
  - Turrets
  - Ammunition
  - Bombs, Torpedoes
  - Bomb Sights
  - Bomb Releases
- COMMUNICATIONS**
  - Radio, Radar
  - Homing Devices
  - Visual Signals
  - Codes, Ciphers
- RECOGNITION**
  - IFF
  - Signals
  - Battle Lights
  - Procedures
- PROTECTION**
  - Armor: Points and Angles of Fire Needing Further Protection
  - Leak Proofing
- EMERGENCY EQUIPMENT**
  - Parachutes
  - Life Belts, Life Rafts
  - Safety Belts
  - Emergency Kits
  - Rations, First Aid
- NAVIGATIONAL EQUIPMENT**
  - Compasses
  - Driftsights
  - Octants
  - Automatic Pilots
  - Charts
  - Field Lighting
- INSTRUMENTS**
  - Flight
  - Power Plant
- OXYGEN SYSTEM**
- CAMOUFLAGE AND DECEPTION DEVICES**
- STRUCTURE**
  - Airframe
  - Control Surfaces
  - Control System
  - Dive Flaps
  - Landing Gear
  - Heating System
  - Flight Characteristics At Various Loadings
- POWER PLANT**
  - Engines
  - Engine Accessories
  - Propellers
  - Lubricating System
  - Starters
  - Exhaust Dampers
- HYDRAULIC SYSTEM**
- ELECTRICAL SYSTEM**
  - Auxiliary Plant
  - Lights
- FUEL SYSTEM**
- FLIGHT CLOTHING**
- MAINTENANCE**
- BASE FACILITIES**
  - Plane Servicing Equipment
  - Personnel Facilities

CALL	PILOT	T/O GREEN	T/O/T	P/C GREEN
301B21	Major LOWELL	0830	0926	1010
302B21	RYAN	0830	0926	1010
303B21	MILONE	0831	0926	1011
304B21	BATES	0831	0926	1011
305B21	B.M. JONES	0832	0926	1012
306B21	IVIE	0832	0926	1012
*307B21	LENKE	0833	0932	1025

\* Captain LENKE flew as leader of the New Zealand Ventura Squadron which participated in the strike.

Major LOWELL, Executive Officer of VMB-423, led seven PBJs and eight PVs of NZ-2 from Green Island in a medium altitude daylight attack on Rabaul target # 10A.

The formation was composed of six PBJs of VMB-423 in two, three plane sections as the first squadron, and one PBJ and eight PVs in three, three plane sections as the second squadron. The Venturas do not carry bombsights so Captain LENKE led their squadron so that he could do the sighting for the second squadron. The flight was airborne by 0836 and joined up as described above. The formation then proceeded to the Duke of York Island, turning West on 263° magnetic to Tawui Point from where the bombing run was made.

The bombing run of the formation was made at 0926 on a heading of 173° magnetic. The first squadron dropped its bombs from 10,300 feet while the second dropped from 11,000 feet.

After passing the bomb release line, the formation broke away to the left and proceeded back to Green with all planes safely on the deck by 1025.

No anti-aircraft fire encountered.

All bombs hit in the target area the pattern of the bomb hits in relation to the target are shown on the attached photographs.

(All times in this narrative are local).

REPORT PREPARED BY:

WARD D. MARTIN APPROVED BY  
Capt., USMCR  
Intelligence Officer

NORMAN J. ANDERSON  
LtCol., USMC  
Commanding Officer

SIGNATURE

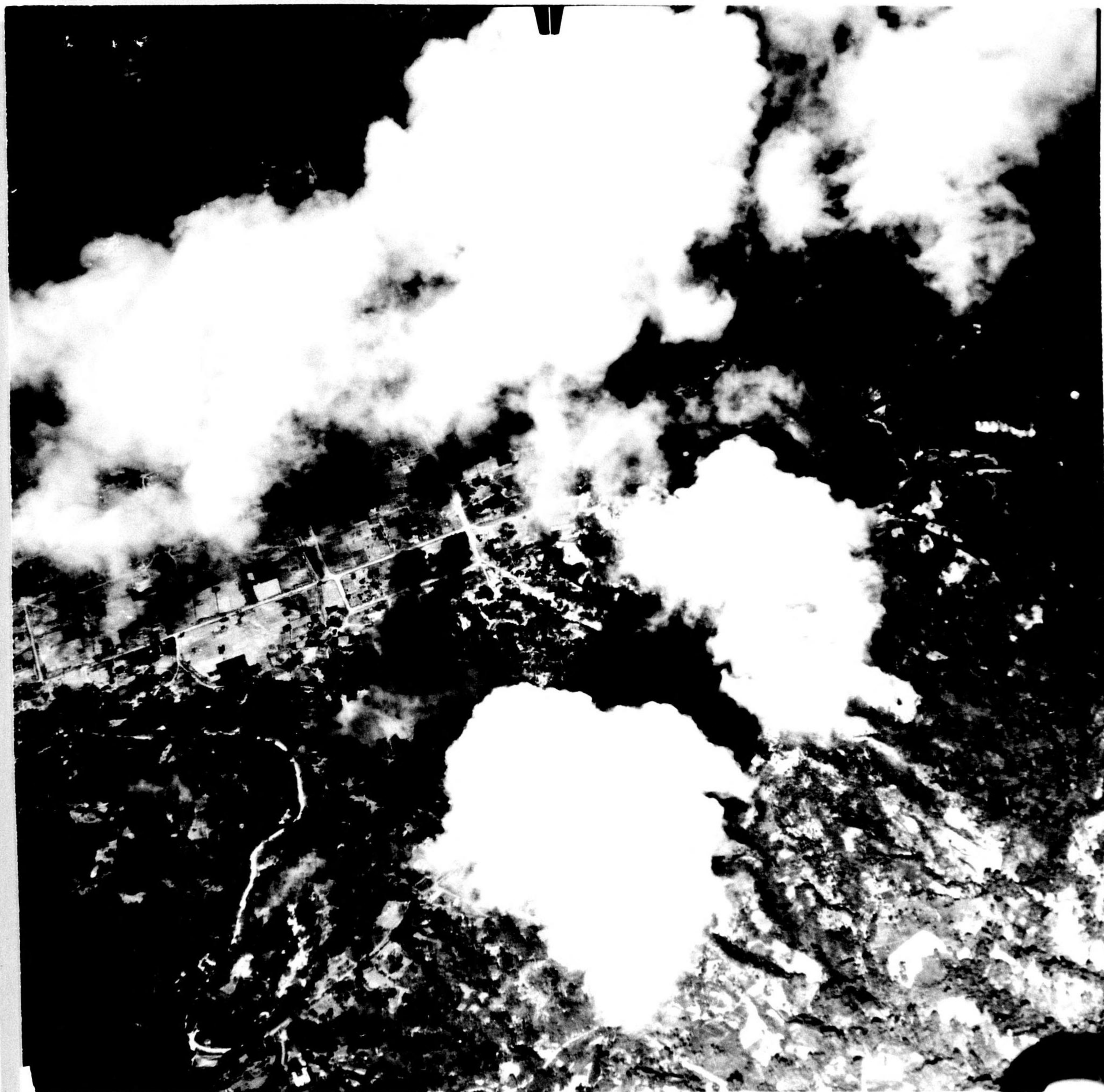
RANK AND DUTY

SIGNATURE

RANK AND DUTY

DATE





VMB-425-742-1111 7K