

GHQ/SCAP Records (RG 331, National Archives and Records Service)

Description of contents

- (1) Box no. 2866
- (2) Folder title/number: (4)
Kumamoto - Mie

(3) Date: ?

(4) Subject:

Classification	Type of record
9230, 9621	i

(5) Item description and comment:
Kumamoto, Kyoto, Mie

(6) Reproduction: Yes No

(7) Film no. Sheet no.

(Compiled by National Diet Library)

Report Control
Symbol MG-B

Reparations Check Sheet

Aircraft ~~Machinery~~

(Cross out one)

1. Name Mitsubishi Heavy Industries Ltd. Code# 21-1

2. Prefecture: Kumamoto ⁵⁰⁵ Year Built 1944

3. Reparation Status. ⁷⁸⁸

(a) Listed by Scapin No 1263

(b) Deleted by Scapin No No *the attention*

(c) Rec. for Deletion Yes *to Scap 1 July 47*

(d) Rec. for Addition ---
(Not yet Listed)

4. Products.

	Items	Percent.
(a) Prewar.	None	
(b) During war.	Aircraft (twin engine bombers)	100%
	1. Agricultural Implements	29%
(c) Post war.	2. Household utensils	39
	3. Items Requested by PD	32

5. Year War Production Began? 1944

6. Is Plant Now in Operation? Yes

7. Size of Company:

	<u>No. Machines</u>	<u>No. of Employees.</u>
(a) Prewar.	None	None
* (b) During war.	7,500	18,380
* (c) Post war.	7,494	816

8. Condition of plant 40 % Percent Damaged

*This number includes 4839 small portable machines.

Incl 1

KUMAMOTO

9. Remarks:

This Aircraft Plant was established for the prime purpose to manufacture twin engine bombers. Commenced operation in January 1944 and completed 46 bombers by the termination of hostilities.

All available machinery and equipment were put to use at that time. A small portion of the machinery and equipment were dispersed near the end of the war to avoid destruction from air raids.

Conversion permit has been issued to plant in May 1946 to manufacture civilian commodities. Plant is operating at present by utilizing 23 percent of the reparation machinery.

The removal of all machinery and equipment will adversely affect the economy of this region, for this plant is the largest agricultural implement and household utensil manufacturing plant in this prefecture which are greatly in need by the civilian population. Also this plant manufactures many items which are on procurement demand.

Many small industries are producing items similar to ones produced by subject plant. It will be difficult for other plants to absorb the workers because machinery and equipment in all plants are in such a worn out condition that it needs to be replaced, therefore these plants can't hire additional personnel unless they can get additional machinery.

Signed

D. M. D. Carron

D. M. D. CARRON

1st Lt. Inf

Resources & Industry

This is No 1 of 5 reviews to be submitted.

775013

Reports Control
Symbol IG-B

Reparations Check Sheet

Aircraft Munitions

(Cross out one)

1. Name Kumamoto Iron Works Ltd. Code# 21-4

2. Prefecture: Kumamoto Year Built 1912

3. Reparation Status.

(a) Listed by Scapin No 1258

(b) Deleted by Scapin No No

(c) Rec. for Deletion Yes

(d) Rec. for Addition
(Not yet Listed)

1939
Branch of Air Plant

*See partial deletion
to Scrap 31 sheet 41*

4. Products.

	Items	Percent.
(a) Prewar.	Mining machinery Electrical Mfg. Machines	45 55
(b) During war.	Civ.-Mining and electrical mfg. machines Mil.-Torpedo parts, aircraft parts	48 52
(c) Post war.	Agricultural implements Wood working machines	60 20
5. Year War Production Began?	<u>1940</u> <u>1939</u> Others	20

*Actually shells
75 mm shells
& bullets*

*45% this was
made in
the old plant
not this plant.*

6. Is Plant Now in Operation? Yes

7. Size of Company:

	No. Machines	No. of Employees.
(a) Prewar.	132	200
(b) During war.	145	552
(c) Post war.	148	160

8. Condition of plant 25 % Percent Damaged

Incl 2

S 01826

9. Remarks:

This company had 2 other branch factories (Oe and Tanukag) other than this main plant. Both of these factories were engaged in munition and aircraft work. However owing to the heavy damage by air raids, these two factories were not designated for reparation. Therefore machinery and equipment which had any value were moved to the main plant and inventoried under main plants designated code number.

A part of the plant was converted in 1940 to manufacture important war time articles as indicated in paragraph 4. At that time approximately 35 percent of peace time machinery and facilities were utilized.

Reconversion permit was issued in January 1946. At present 95% of inventoried machines are in operation to manufacture civilian commodities.

It will be impossible to continue operation subsequent to the removal, which will result in a displacement of laborers. Also it will affect the economy of this region for this company produced a number of important agricultural implements and wood working machines which are essential to this agricultural and forestry prefecture.

Most of these machinery and equipment are over 10 years old.

Signed

Omer D. Garrison

OMER D. GARRISON

1st Lt, Inf.

Resources & Industry

This is No 2 of 5 reviews to be submitted.

775013

Re. ts Control
Symbol IG-B

Reparations Check Sheet

Aircraft Munitions

(Cross out one)

1. Name Mitsui Chemical Industry Co. Ltd. Code# 21-5

Tamana Factory

2. Prefecture: Kumamoto Year Built 1944

3. Reparation Status.

(a) Listed by Scapin No 1258

(b) Deleted by Scapin No No

(c) Rec. for Deletion No *None*

(d) Rec. for Addition ---
(Not yet Listed)

4. Products.

	Items	Percent.
(a) Prewar.	None	---
(b) During war.	Picric acid	100
(c) Post war.	Not in operation	---

5. Year War Production Began? 1944

6. Is Plant Now in operation? No

7. Size of Company:

	<u>No. Machines</u>	<u>No. of Employees.</u>
(a) Prewar.	None	---
(b) During war.	88	151
(c) Post war.	88	12

8. Condition of Plant No % Percent Damaged

Incl 3

9. Remarks:

This factory commenced operation on a small scale in December 1944, which was prior to the completion of the installation of the entire facility.

The removal of machinery and facilities will not affect the economy of this region nor will it displace any laborers, for plant has been issued a conversion permit on 23 January 1946 to operate in manufacturing acetanilide. However due to the lack of necessary facilities, and also the product not very highly needed, the plant was not put into operation.

Signed

Omer D. Cannon

Omer D. Cannon

1st Lt, Inf

Resources & Industry

This is No 3 of 5 reviews to be submitted.

Reports Control
Symbol MG-B

Reparations Check Sheet

Aircraft Munitions

(Cross out one)

1. Name Sanyo Kogyo K.K. Kumamoto Factory Code# 21-6

2. Prefecture: Kumamoto Year Built 1942

3. Reparation Status.

(a) Listed by Scapin No 1376

(b) Deleted by Scapin No No

(c) Rec. for Deletion No

(d) Rec. for Addition This is an addition to Scap # 70046
(Not yet Listed)

4. Products.

	Items	Percent.
(a) Prewar.	None	
(b) During War.	Aircraft parts	100
(c) Post War.	Foodstuff	100

5. Year War Production Began? 1942

6. Is Plant Now in Operation? Yes

7. Size of Company:

	<u>No. Machines</u>	<u>No. of Employees.</u>
(a) Prewar.	---	---
(b) During War.	60	464
(c) Post War.	67	36

8. Condition of Plant 56 % Percent Damaged

Incl 4

5 01826

9. Remarks:

Factory commenced operation immediately after the establishment (1942) to manufacture aircraft parts by using 66 percent of the company's machinery and 11 machines out of the 19 which were borrowed from the 21 Naval Arsenal, Omsk. Subsequent to termination of hostilities, factory was converted to process feedstuff.

On 20 Dec. 1946, 56 percent of the establishment was destroyed by fire. Therefore, all reparation machinery were centralized in one section of establishment and remaining buildings and ground were released to company in July 1947.

The removal of machinery will hinder the operation slightly, however, it will not affect the economy of this region, for 90 percent of machinery in use to process feedstuff are non-reparation machines.

Signed

D. M. D. Carson

D. M. D. CARSON

1st Lt. Inf

Resources & Industry

This is No 4 of 5 reviews to be submitted.

Reports Control
Symbol 19-

Reparations Check Sheet

Aircraft ~~Machinery~~

(Cross out one)

1. Name Sanyo Kieyo K. K. Takuma Factory Code# 21-7

2. Prefecture: Kumamoto Year Built 1941

3. Reparation Status.

(a) Listed by Scapin No 1376

(b) Deleted by Scapin No ---

(c) Rec. for Deletion Yes *this by re retention to Scap 28 July 47*

(d) Rec. for Addition ---
(Not yet Listed)

4. Products.

	Items	Percent.
(a) Prewar.	None	---
(b) During war.	1. Carts and waggons	40
	2. Aircraft parts	60
(c) Post war.	1. Handcarts and waggons	68
	2. Turbin and centrifugal pumps	32

5. Year War Production Began? 1942

6. Is Plant Now in Operation? Yes

7. Size of Company:

	<u>No. Machines</u>	<u>No. of Employees.</u>
(a) Prewar.	None	---
(b) During war.	61	75
(c) Post war.	70	56

8. Condition of Plant No % Percent Damaged

Incl 5

5 01326

9. Remarks:

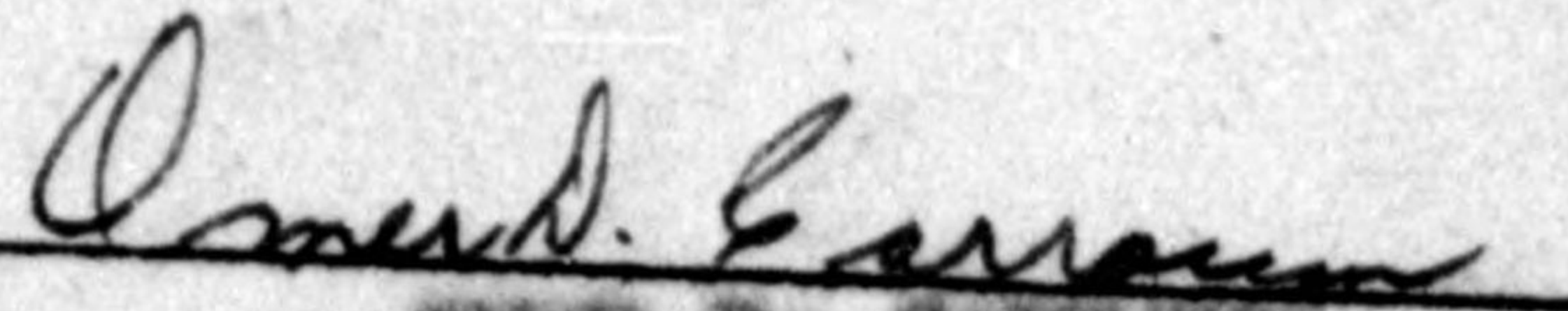
The Kusamoto Vehicle Mfg. Co. and Kusamoto Machinery Development Works were combined in March 1945 to form the Sanyo Aircraft Co. Ltd, Takuma Factory. After cessation of hostilities the name of the company was changed to Sanyo Kogyo K.K., Takuma Factory. The Kusamoto Machinery Development Works commenced manufacturing shells and shell parts in 1942. Upon consolidation in March 1945 all efforts were turned to manufacture of aircraft parts.

Permit for reconversion was granted to factory in January 1946 to manufacture carts, wagons, turbine and centrifugal pumps. Factory is operating satisfactorily at present by utilizing approximately 75% of reparation machines.

For the above mentioned reason the removal of these will affect the economy of this region slightly, due to the factory has only a few equivalent non-reparation machinery. Therefore this will paralyze the manufacturing of turbine and centrifugal pumps, which this factory is recognized as the only one in Southern Kyushu. However with the small number of wood working machines they have available will enable the factory to continue to manufacture carts and wagons on a smaller scale. Even though displacements of laborers would be unavoidable,

A large percentage of the machines are over 10 years old.

Signed



DONALD E. CARRIGAN
1st Lt, Inf
Resources & Industry

This is No 5 of 5 reviews to be submitted.

8. Condition of Plant None % Percent Damaged.

9. Remarks:

This plant was deleted by SCAPIN 1227, dtd 24 Sept 1946

Enos L. Commons Jr.

Signed Enos L. Commons Jr., Capt., A.C.

Economics Div. Officer

This is No 27 of 28 reviews to be submitted.



775013

Export Control
Form MG-B

Reparations Check Sheet

Aircraft ~~XXXXXXXX~~

(Cross out one)

1. Name Kanegafuchi Spinning Co., Ltd. Code# 22-4
Kyoto, Plant

2. Prefecture: Kyoto Year Built 1906

3. Reparations Status.

(a) Listed by Scapin No 987

(b) Deleted by Scapin No 1211

(c) Rec. for Deletion No rec

(d) Rec. for Addition
(Not yet listed)

4. Products.

	Items	Percent
Prewar:	Spun silk	65%
	Spun silk fabric	35%
During War:	Spun silk	92%
	Training Plane	8%
Post War:	Prefabricated Houses	60%
	Worsted spinning yarn	40%

5. Year War Production Began? 1944

6. Is Plant Now in Operation? Yes

7. Size of Company:

	No. Machines	No. of Employees
Prewar:	41940 Spinning mach.	1700
	728 weave frames	
During War:	15870 Spinning mach.	1850
	35 machine tools	
Post War:	4000 Spinning mach.	480
	33 wood working mach.	

3 01826

8. Condition of Plant None % Percent Damaged.
9. Remarks: This factory was established in 1908 and its chief products were textile machines and textiles. During the war textile machines were reduced to scrap by order of the Japanese Government, which meant a change of production. Permission was given for reconversion by HQ I Corps for the production of small trucks and prefabricated houses. It has reached a high level in the production of the above mentioned products.

Enos L. Commons Jr.

Signed Enos L. Commons Jr., Capt. A.C.

Economics Division Officer

This is No 15 of 28 reviews to be submitted.

775013

Export Control
Symbol MG-D

Reparations Check Sheet

Aircraft ~~Machine~~

(Cross out one)

1. Name Kawanishi Aircraft Co., Ltd. Code# 22-5
Fukuchiyama Underground Plant

2. Prefecture: Kyoto Year Built 1945

3. Reparations Status.

- (a) Listed by Scapin No 987
- (b) Deleted by Scapin No _____
- (c) Rec. for Deletion No more attention to Scap 24 Jan 47
- (d) Rec. for Addition _____
(Not yet Listed)

4. Products.

	Items	Percent
Prewar:	None	0%
During War:	Final assembly of aircraft.	100%
Post War:	Farm implements	70%
	Civilian commodities	20%
	Toys	10%

5. Year War Production Began? 1945

6. Is Plant Now in Operation? Yes

7. Size of Company:

	No. Machines	No. of Employees
Prewar:	None	None
During War:	263	1,306
Post War:	263	195

S 01826

775013

Person Control
Symbol MC-2

Reparations Check Sheet

Aircraft munitions

(Cross out one)

1. Name Mitsubishi Heavy Industries Ltd. Code# 22-9
Katsura Plant

2. Prefecture: Kyoto Year Built 1943

3. Reparations Status.

(a) Listed by Scapin No 629

(b) Deleted by Scapin No _____

(c) Rec. for Deletion No Rec

(d) Rec. for Addition _____
(Not yet Listed)

4. Products.

	Items	Percent
Prewar:	None	0
During War:	Aircraft engine and its parts	100%
Post War:	Motor Trucks, Buses and parts	100%

5. Year War Production Began? 1944

6. Is Plant Now in Operation? Yes

7. Size of Company:

	No. Machines	No. of Employees
Prewar:	None	None
During War:	1,746	9,961
Post War:	1,746	1,345

8. Condition of Plant None % Percent Damaged.

9. Remarks: This factory shares in the production of 6% of the Motor Trucks manufactured in Japan, with the Uzumasa Plant of the same company. Being merged with the uzumasa Plant it is the only producer of Motor Trucks in Western Japan, and goes by the name of the Kyoto Engineering Works. The removal of this machinery would leave the Truck producing industry in this section of Japan destitute.

Enos L. Commons Jr.

Signed Enos L. Commons Jr., Capt. A.C.

Economics Division Officer

This is No 3 of 28 reviews to be submitted.

775013

Reparations Control
Symbol MG-D

Reparations Check Sheet

Aircraft

~~MUNITIONS~~

(Cross out one)

1. Name Mitsubishi Heavy Industries Ltd. Code# 22-10
 2. Prefecture: Uzumasa Plant
Kyoto Year Built 1943

3. Reparations Status.

- (a) Listed by Scapin No 629
 (b) Deleted by Scapin No _____
 (c) Rec. for Deletion no Rec
 (d) Rec. for Addition _____
 (Not yet Listed)

4. Products.

	Items	Percent
Prewar:	None	0
During War:	Aircraft engine valves	100%
Post War:	Jigs, Gauges and Tools	70%
	Valves, Car Parts and etc.	30

5. Year War Production Began? 1943
 6. Is Plant Now in Operation? yes
 7. Size of Company:

	No. Machines	No. of Employees
Prewar:	None	None
During War:	1,642	4,990
Post War:	1,642	685

0-1876

8. Condition of Plant 20 % Percent Damaged.

9. Remarks: This factory is one of the four leading Motor Trucks producers in Japan, and produces the following percentages:

Motor Trucks	6%
Special Tools	50%

It is the only Motor Truck producer in Western Japan. The removal of this machinery would leave the Truck producing industry of this section of Japan destitute. The Uzumasa and Katsura Plants have merged under the name of Kyoto Engineering Works.

Enos L. Commons Jr.

Signed Enos L. Commons Jr., Capt. A.C.

Economics Division Officer

This is No 2 of 28 reviews to be submitted.



775013

Control
MG-D

Reparations Check Sheet

Aircraft ~~Aviation~~

(Cross out one)

1. Name Nikkoku Kogyo K.K. Kamikyo Plant Code# 22-12
2. Prefecture: Kyoto Year Built 1942
3. Reparations Status.

- (a) Listed by Scapin No. 629
- (b) Deleted by Scapin No. _____
- (c) Rec. for Deletion None
- (d) Rec. for Addition _____
(Not yet Listed)

4. Products.

	Items	Percent
Prewar:	None	0
During War:	Gliders	32%
	Training Planes	68%
Post War:	Small Ovens	29.9%
	Foot lockers	38%
	Civilian commodities	27%
	Trucks and cabs	5.1%

5. Year War Production Began? 1943
6. Is Plant Now in Operation? Yes
7. Size of Company:

	No. Machines	No. of Employees
Prewar:	None	None
During War:	320	2,703
Post War:	314	267

S 61826

8. Condition of Plant None % Percent Damaged.

9. Remarks: **Production began in 1943 primarily for manufacturing aircraft. After the termination of the war a reconversion permit was given to them by Hq. Sixth Army in November 1945, to manufacture the items on the reverse side of this form, using the materials previously used in the manufacture of aircraft. When the supply was exhausted, a new permit for additional items was requested and granted by Hq. I Corps on 16 July 1946.**

Enos L. Commons Jr.

Signed Enos L. Commons Jr., Capt. A.C.

Economics Division Officer

This is No 20 of 28 reviews to be submitted.

775013

Case Control
Symbol MO-D

Reparations Check Sheet

Aircraft ~~XXXXXXXX~~

(Cross out one)

1. Name Nikkoku Kogyo K.K. Okubo Plant Code# 22-13

2. Prefecture: Kyoto Year Built 1942

3. Reparations Status.

(a) Listed by Scapin No 629

(b) Deleted by Scapin No _____

(c) Rec. for Deletion Plan by rec retention to Scap 11 Oct 46

(d) Rec. for Addition _____
(Not yet Listed)

4. Products.

	Items	Percent
Prewar:	None	0
During War:	Gliders	0%
	Training Planes	61%
	Transport Planes	33%
Post War:	Bodies for trucks and buses	75%
	Light trucks	2%
	Trailer-bus bodies	0%
	Cabs for military trucks	10%
	Gas producing furnace	7%

5. Year War Production Began? 1943

6. Is Plant Now in Operation? Yes

7. Size of Company:

	No. Machines	No. of Employees
Prewar:	None	None
During War:	1,013	7,550
Post War:	1,013	487

8. Condition of Plant None % Percent Damaged.
9. Remarks: **Established as an aircraft factory during the war, this plant converted to peacetime production immediately after the termination of the war. Currently, this factory is manufacturing truck and bus bodies, critically needed in present Japan.**

Because of lack of equivalent non-reparations facilities in this area, removal of this plant for restitution would have a detrimental effect on the rehabilitation of the Japanese economy.

Only a portion of the machinery and equipment used during the war are being used at present by this factory. Recent inspections indicate that all items of reparation stored in this factory are being maintained satisfactorily in compliance with current directives.

Enos L. Commons Jr.

Signed Enos L. Commons Jr., Capt. A.C.

Economics Division Officer

This is No 21 of 28 reviews to be submitted.

Export Control
Symbol MG-D

Reparations Check Sheet

Aircraft ~~XXXXXXXXXX~~

(Cross out one)

1. Name Nitto Precision Machinery Co. Ltd. Code# 22-14
No. 1 Plant
2. Prefecture: Kyoto Year Built 1938
3. Reparations Status.

- (a) Listed by Scapin No 987
- (b) Deleted by Scapin No _____
- (c) Rec. for Deletion _____
- (d) Rec. for Addition _____
(Not yet Listed)

*This is a retention
to Scap 24 Dec 46*

4. Products.

	Items	Percent
Prewar:	Seri-plane	30%
	Raw silk conditioning and testing machine	30%
	Parts of meters	40%
During War:	Seri-plane	10%
	Raw silk conditioning and testing machine	10%
	Parts of meters	50%
	Link of apparatus for ladder & Elev.	30%
Post War:	Seri-plane	20%
	Raw silk conditioning and testing machine	60%
	Electric meters	10%
	farm tools	10%

5. Year War Production Began? 1943
6. Is Plant Now in Operation? Yes
7. Size of Company:

	No. Machines	No. of Employees
Prewar:	203	250
During War:	385	850
Post War:	394	214

8. Condition of Plant None % Percent Damaged.

9. Remarks: There are six (6) different silk manufacturing companies which are dependent upon this company's production of the GUNZE SILK MACHINE. This company made application for release from reparations in August 1946 but was denied because of new data from higher headquarters.

Enos L. Commons Jr.

Signed Enos L. Commons Jr., Capt. A.C.

Economics Division Officer

This is No 18 of 28 reviews to be submitted.



Export Control
Symbol MG-D

Reparations Check Sheet

Aircraft ~~XXXXXXXX~~

(Cross out one)

1. Name Nitto Precision Machinery Co. Ltd Code# 22-15

2. Prefecture: No. 2 Plant Kyoto Year Built 1944

3. Reparations Status.

(a) Listed by Scapin No 987

(b) Deleted by Scapin No _____

(c) Rec. for Deletion None

(d) Rec. for Addition _____
(Not yet Listed)

4. Products.

	Items	Percent
Prewar:	None	0
During War:	Oil pumps (aircraft)	100%
Post War:	None	0

5. Year War Production Began? 1944

6. Is Plant Now in Operation? No

7. Size of Company:

	No. Machines	No. of Employees
Prewar:	None	None
During War:	76	250
Post War:	73	6

775013

Reparations Control
Symbol MC-B

Reparations Check Sheet

Aircraft ~~XXXXXXXX~~

(Cross out one)

1. Name Osaka Seisazoki K.K. Kameoka Code# 22-16
Plant
2. Prefecture: Kyoto Year Built 1945
3. Reparations Status.

- (a) Listed by Scapin No 1263
- (b) Deleted by Scapin No _____
- (c) Rec. for Deletion None
- (d) Rec. for Addition _____
(Not yet Listed)

4. Products.

	Items	Percent
Prewar:	None	0
During War:	None	0
Post War:	None	0

5. Year War Production Began? Did not start.
6. Is Plant Now in Operation? No
7. Size of Company:

	No. Machines	No. of Employees
Prewar:	None	None
During War:	60	Approx. 400 These were laborers used in making buildings.
Post War:	60	6

8. Condition of Plant None % Percent Damaged.

9. Remarks: No records. **This factory never operated. The machines of this factory were dispersed from the Fuku Plant of the Osaka Seisazoki in 1945 with the intention of establishing a branch factory.**

	00	
	00	
	None	None

Enos L. Commons Jr.

Signed Enos L. Commons Jr., Capt. A.C.

Economics Division Officer

This is No 9 of 28 reviews to be submitted.



775013

Paper Control
Symbol MG-D

Reparations Check Sheet

Aircraft ~~INDUSTRIAL~~

(Cross out one)

1. Name Shimadzu Seisakusho, Jugo Plant Code# 22-17

2. Prefecture: Kyoto Year Built 1940

3. Reparations Status.

(a) Listed by Scapin No 987

(b) Deleted by Scapin No _____

(c) Rec. for Deletion _____ *This is rec. deletion to Scap 23 Nov 46*

(d) Rec. for Addition _____
(Not yet Listed)

4. Products.

	Items	Percent
Prewar:	Meters for Aircraft	100%
During War:	Meters for Aircraft	100%
Post War:	None	0

5. Year War Production Began? 1942

Is Plant Now in Operation? No

7. Size of Company:

	No. Machines	No. of Employees
Prewar:	60	100 Approx.
During War:	173	1,714
Post War:	None	None

8. Condition of Plant None % Percent Damaged.

9. Remarks: Now being used as I Corps Engineering Depot.

The machines are kept in the following places:

Shimadzu Sanjo Plant	83
Shimadzu Yamanouchi Plant	32
Shimadzu Marasakino Plant	17
Shimadzu Fushimi Plant	27
Shimadzu Gojo Plant	5
Shimadzu Ebisugawa Plant	1
Shimadzu Akagawa Plant	8

Enos L. Commons Jr.

Signed Enos L. Commons Jr., Capt. A.C.

Economics Division Officer

This is No 4 of 28 reviews to be submitted.

Reparations Control
Symbol MG-D

Reparations Check Sheet

Aircraft ~~XXXXXXXXXX~~

(Cross out one)

1. Name Shimadzu Seisakusho, Sanjo Plant Code# 22-18

2. Prefecture: Kyoto Year Built 1919

3. Reparations Status.

(a) Listed by Scapin No 629

(b) Deleted by Scapin No _____

(c) Rec. for Deletion None.

(d) Rec. for Addition _____
(Not yet Listed)

4. Products.

	Items	Percent
Prewar:	Reduction Gears	37%
	X-Ray apparatus	34%
	Vacuum pumps	11%
	Electric furnances and dryers	8%
	Precision and optical instru.	10%
During War:	Aircraft and munition parts	49%
	Reduction gears	23%
	X-Ray apparatus	17%
	Precision and optical instru.	9%
	Vacuum pumps	2%
Post War:	X-Ray apparatus	28%
	Reduction gears	26%
	Bulb making machine	11%
	Vacuum pumps	10%
	Precision and optical instru.	25%

5. Year War Production Began? 1940

Is Plant Now in Operation? Yes

7. Size of Company:

	No. Machines	No. of Employees
Prewar:	665	1,601
During War:	2,055	8,406
Post War:	2,019	1,596

8. Condition of Plant None % Percent Damaged.

9. Remarks: This factory is divided into three (3) sections the East, West and North. During the war the North and half of the West section produced Aircraft and Munition parts, while the rest of the West section and the East section produced only civilian materials. The East section is not contained on the Reparations list due to the above fact. This plant is producing a small percentage of mining machinery besides the list of products set forth on the reverse side of this form.

The East section was removed from reparations by 9th Ind, GHQ, SCAP, dtd 22 Oct. 1946, to letter from Kyoto Mil Govt Team, subj: "Release of Shimazu Ind. Ltd., Sanjo Plant from Reparations List." dtd 10 July 1946.

Enos L. Commons Jr.

Signed Enos L. Commons Jr., Capt. A.C.

Economics Division Officer

This is No 5 of 28 reviews to be submitted.

Control Symbol MG-D

Reparations Check Sheet

Aircraft ~~XXXXXXXXXX~~

(Cross out one)

1. Name Shimadzu Seisakusho, Shijo Plant Code# 22-19

2. Prefecture: kyoto Year Built 1944

3. Reparations Status.

(a) Listed by Scapin No 629

(b) Deleted by Scapin No _____

(c) Rec. for Deletion None

(d) Rec. for Addition _____
(Not yet listed)

4. Products.

	Items	Percent
Prewar:	None	0
During War:	Aircraft parts	100%
Post War:	Printing machines and acces.	100%
	Production ceased in April 1947.	

5. Year War Production Began? 1944

6. Is Plant Now in Operation? No

7. Size of Company:

	No. Machines	No. of Employees
Prewar:	None	None
During War:	324	1,312
Post War:	261	1

8. Condition of Plant None % Percent Damaged.

9. Remarks: This factory was sold to the Nippon Shashin Insatsu K.K. in April of 1947 and some of the machines were moved to the following places:

1. Shimadzu Sanjo Plant	43
2. Shimadzu Ebisugawa Plant	1
3. Nippon Yusoki Kotari Plant	19
4. Nippon Yusoki Toji Plant	10

The above machines with the 261 still stored in buildings of this plant not in use by the Nippon Shashin Insatsu K.K., Total the 334 machines used during the war by this firm.

Enos L Commons Jr.

Signed Enos L. Commons Jr., Capt. A.C.

Economics Division Officer

This is No 6 of 28 reviews to be submitted.

Records Control
Symbol MG-D

Reparations Check Sheet

Aircraft ~~XXXXXXXXXX~~

(Cross out one)

1. Name Shimadzu Seisakusho Yamanouchi Plant Code# 22-20

2. Prefecture: Kyoto Year Built 1934

3. Reparations Status.

(a) Listed by Scapin No 987

(b) Deleted by Scapin No 1172

(c) Rec. for Deletion This is see deletion to Scapin # Aug 46

(d) Rec. for Addition (Not yet Listed)

4. Products.

	Items	Percent
Prewar:	Paper manequins	90%
	Display articles	10%
During War:	Pitot tubes for aircraft	11%
	Drawing boards	28.5%
	Rulers	60.5%
Post War:	Pressure gauges	50%
	Metal thermometers	25%
	Weather equipment	25%

5. Year War Production Began? 1944

6. Is Plant Now in Operation? Yes

7. Size of Company:

	No. Machines	No. of Employees
Prewar:	15	88
During War:	61	182
Post War:	88	160

Export Control
Symbol MG-B

Reparations Check Sheet

~~XXXXXXXXXX~~ Munitions

(Cross out one)

1. Name Terauchi Seisakusho, Ayoto Main Code# 22-21
Plant
2. Prefecture: Kyoto Year Built April 1913

3. Reparations Status.

- (a) Listed by Scapin No 987
- (b) Deleted by ~~XXXXXXXXXX~~ 3rd Ind GHQ, dtd 7 Sept 1946
- (c) Rec. for Deletion *This Agree deletion to Sept 9 Aug 46*
- (d) Rec. for Addition _____
(Not yet Listed)

4. Products.

	Items	Percent
Prewar:		
	Bolts, nuts & machine screws	100%
During War:		
	Bolts, nuts & machine screws	93.5%
	Shells, bullets & parts of primer	6.5%
Post War:		
	Bolts, nuts and screws	77.8%
	Other metal wares	22.2%

5. Year War Production Began? 1942

Is Plant Now in Operation? Yes

7. Size of Company:

	No. Machines	No. of Employees
Prewar:	2,464	2,524
During War:	2,857	4,444
Post War:	2,857	411

Export Control
Symbol MC-D

Reparations Check Sheet

Aircraft

~~PRODUCT~~

(Cross out one)

1. Name Yoshihru Kogyo K.K. Code# 22-22

2. Prefecture: Kyoto Year Built 1944

3. Reparations Status.

(a) Listed by Scapin No 1263

(b) Deleted by Scapin No _____

(c) Rec. for Deletion None

(d) Rec. for Addition _____
(Not yet Listed)

4. Products.

	Items	Percent
Prewar:	None	0
During War:	Tail wings for aircraft	70%
	Under wings of aircraft	15%
	Duraluminum rivets	15%
Post War:	Thrashing machines	10%
	Electric stoves	20%
	Tableware and stationary	50%
	Mannequins	20%

5. Year War Production Began? 1944

6. Is Plant Now in Operation? Yes 10% of the plant

7. Size of Company:

	No. Machines	No. of Employees
Prewar:	None	None
During War:	65	Approx. 1,000
Post War:	65	180

8. Condition of Plant None % Percent Damaged.

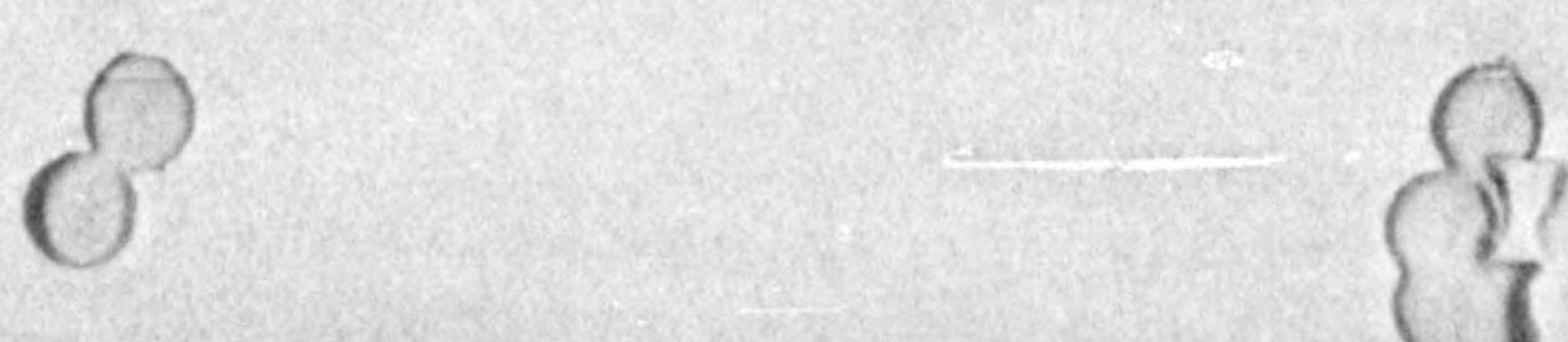
9. Remarks: **This company was built in 1944 with profits derived from the Textile Plant of the same company. In addition to the products mentioned on the reversed side of this form the above mentioned company is engaged in the milling of sweet potatoes vine and root, arrow root, acorns and etc. to relieve the food shortage in this prefecture.**

Enos L. Commons Jr.

Signed **Enos L. Commons Jr., Capt. A.C.**

Economics Division Officer

This is No 10 of 28 reviews to be submitted.



775013

Address Control
Symbol MC-D

Reparations Check Sheet

Aircraft ~~1336666~~

(Cross out one)

1. Name Tango Seiki Co. Ltd., Amino Plant Code# 22-30

2. Prefecture: Kyoto Year Built 1943

3. Reparations Status.

(a) Listed by Scapin No 1139

(b) Deleted by Scapin No _____

(c) Rec. for Deletion None

(d) Rec. for Addition _____
(Not yet Listed)

4. Products.

	Items	Percent
Prewar:	None	None
During War:	Vertical stabilizers and Rudders	100%
Post War:	Articles (everday civilian)	70%
	Farm implements	10%
	Foot lockers for Occup. Forces and cooking Utensils	20%

5. Year War Production Began? 1944

6. Is Plant Now in Operation? Yes

7. Size of Company:

	No. Machines	No. of Employees
Prewar:	None	None
During War:	103	291
Post War:	179	90

S 01826

8. Condition of Plant None % Percent Damaged.

9. Remarks: This factory was investigated on July 12 1946 and placed on reparations in compliance with OD-5. The farm implements and cooking utensils which are produced by this plant supply the populace of Amino and the surrounding vicinity.

Enos L. Commons Jr.

Signed Enos L. Commons Jr., Capt. A.C.

Economics Division Officer

This is No 11 of 28 reviews to be submitted.

Reparations Control
Symbol MC-B

Reparations Check Sheet

Aircraft ~~INDUSTRIAL~~

(Cross out one)

1. Name Shimadzu Seisakusho, Takano Plant Code# 22-31

2. Prefecture: Kyoto Year Built 1944

3. Reparations Status.

(a) Listed by Scapin No 629

(b) Deleted by Scapin No _____

(c) Rec. for Deletion no rec.

(d) Rec. for Addition _____
(Not yet Listed)

4. Products.

	Items	Percent
Prewar:	None	0
During War:	Bellows for aircraft	100%
Post War:	None	0

5. Year War Production Began? 1944

Is Plant Now in Operation? No

7. Size of Company:

	No. Machines	No. of Employees
Prewar:	None	None
During War:	179	720
Post War:	None	None

8. Condition of Plant None % Percent Damaged.

9. Remarks: This factory was sold to the Repatriators Association and
The machine are kept in the following places:

Shimadzu Shijo Plant	140
Shimadzu Fushimi Plant	19
Shimadzu Sanjo Plant	2
Nippon Yusoki Toji Plant	11
Nippon Yusoki Kotari Plant	7

Enos L Commons Jr.

Signed Enos L. Commons Jr., Capt. A.C.

Economics Division Officer

This is No 7 of 28 reviews to be submitted.

775013

Area Control
Symbol MG-D

Reparations Check Sheet

Aircraft

~~XXXXXXXX~~

(Cross out one)

1. Name Nikkoku Kogyo K.K., Sonobe Plant Code# 22-32

2. Prefecture: Kyoto Year Built 1942

3. Reparations Status.

(a) Listed by Scapin No 629

(b) Deleted by Scapin No _____

(c) Rec. for Deletion the attention to Scap 2/20/46

(d) Rec. for Addition _____
(Not yet Listed)

4. Products.

	Items	Percent
Prewar:	None	0
During War:	Parts for aircraft	100%
Post War:	Agriculture implements	37.2%
	Automobile parts	7.6%
	Fibre products	30.0%
	Saw-products	6.9%
	Others	18.3%

5. Year War Production Began? 1945

Is Plant Now in Operation? Yes

7. Size of Company:

	No. Machines	No. of Employees
Prewar:	None	None
During War:	348	1030
Post War:	348	182

3 01026

8. Condition of Plant None % Percent Damaged.

9. Remarks: Subject Plant was purchased from Senobe-cho in 1942, for use in teaching young men to become technicians and workmen. Their reconversion permit allows the use of all of the machines in this factory, and are used in manufacturing the items on the reverse side of this form.

Enos L. Commons Jr.

Signed Enos L. Commons Jr., Capt. A.C.

Economics Division Officer

This is No 22 of 28 reviews to be submitted.

775013

Reparations Control
Symbol MC-D

Reparations Check Sheet

~~Inventory~~ Munitions

(Cross out one)

1. Name Heian Sangyo Co. Ltd. Kitano Plant Code# 22-34

2. Prefecture: Kyoto Year Built 1944

3. Reparations Status.

(a) Listed by Scapin No 1134

(b) Deleted by Scapin No _____

(c) Rec. for Deletion _____

(d) Rec. for Addition _____
(Not yet Listed)

This is an addition to Scap 27 Nov 46

4. Products.

	Items	Percent
Prewar:	None	0
During War:	Bodies of machine-gun bullets (25mm)	100%
Post War:	None	0

5. Year War Production Began? 1944

Is Plant Now in Operation? No

7. Size of Company:

	No. Machines	No. of Employees
Prewar:	None	None
During War:	120	267
Post War:	120	15

8. Condition of Plant None % Percent Damaged.

9. Remarks: None

	720	
	720	
	720	

Enos L. Commons Jr.

Signed Enos L. Commons Jr., Capt. A.C.

Economics Division Officer

This is No 1 of 28 reviews to be submitted.



775013

Process Control
Symbol MC-D

Reparations Check Sheet

~~Weapons~~ Munitions

(Cross out one)

1. Name Kotobuki Industry Co. Ltd. Code# 22-36

Jujo Plant

2. Prefecture: Kyoto Year Built 1933

3. Reparations Status.

(a) Listed by Scapin No 1134

(b) Deleted by Scapin No _____

(c) Rec. for Deletion This factory deletion to Scap 7 Nov 46

(d) Rec. for Addition _____
(Not yet Listed)

4. Products.

	Items	Percent
Prewar:	Rayon machines	99%
	Arms and munitions	1%
During War:	Arms and munitions	82%
	Rayon machines	8%
	Cast Iron Goods	10%
Post War:	Wood working machines	45%
	Wire netting machines	27%
	Threshing machines	20%
	Cast Iron Goods	5%
	Others	3%

5. Year War Production Began? 1934

6. Is Plant Now in Operation? Yes

7. Size of Company:

	No. Machines	No. of Employees
Prewar:	1010	1150
During War:	1090	2321
Post War:	1099	776

5 01826

8. Condition of Plant None % Percent Damaged.

9. Remarks: **No major changes in the character of the plant or equipment was made when this plant went into war production, and they resumed their production of textile machinery as seen as the war ended. 60% of the plant production is used for the manufacturing of textile machines and the remaining 40% is the production of lumber machines.**

More than half of the rayon machines in Japan are manufactured in this plant and orders keep coming in for more. The efficiency of this plant comes from it's being so well equipted and the highly skilled labor that it employs.

Enos L. Commons Jr.

Signed Enos L. Commons Jr., Capt. A.C.

Economics Division Officer

This is No 12 of 28 reviews to be submitted.

775013

Reperes Control
Symbol MC-B

Reperations Check Sheet

~~Reperations~~ Munitions

(Cross out one)

1. Name Kotobuki Industry Co. Ltd. Code# 22-37

Kujo Plant
2. Prefecture: Kyoto Year Built 1925

3. Reperations Status.

(a) Listed by Scapin No 1134

(b) Deleted by Scapin No _____

(c) Rec. for Deletion No rec

(d) Rec. for Addition _____
(Not yet Listed)

4. Products.

	Items	Percent
Prewar:	Spinning machines	93%
	Looms	7%
During War:	Arms and munitions	97%
	Spinning Machines	3%
Post War:	Calico loom (Kotobuki A type)	100%

5. Year War Production Began? 1937

6. Is Plant Now in Operation? Yes

7. Size of Company:

	No. Machines	No. of Employees
Prewar:	170	250
During War:	170	483
Post War:	170	146

01226

8. Condition of Plant None % Percent Damaged.

9. Remarks: No major changes in the plant or its equipment was made in reconversion to war-time or post-war production. The production of this factory is devoted 100% to the manufacture of spinning machines.

OFFICE OF THE DIRECTOR OF ECONOMIC STABILIZATION
 WASHINGTON, D. C. 20503

RECEIVED
 DIVISION OF ECONOMIC STABILIZATION

Enos L. Commons Jr.

Signed Enos L. Commons Jr., Capt. A.C.

Economics Division Officer

This is No 13 of 28 reviews to be submitted.



775013

Reparations Control
Symbol MO-B

Reparations Check Sheet

~~XXXXXX~~ Munitions

(Cross out one)

1. Name Kyoto Kikai Kabushiki Kaisha Code# 22-38

2. Prefecture: Kyoto Year Built 1932

3. Reparations Status.

(a) Listed by Scapin No 1134

(b) Deleted by Scapin No 1258

(c) Rec. for Deletion This Agree deletion to Scap 30 Oct 46

(d) Rec. for Addition NOT YET LISTED
(Not yet listed)

4. Products.

	Items	Percent
Prewar:	Textile dyeing and finishing machines	64.4%
	Hand tools	30.6%
	Detonators	5.0%
During War:	Textile dyeing and finishing machines	0.1%
	Hand tools	90.1%
	Centrifugal separators	2.3%
	Detonators	7.5%
Post War:	Textile dyeing and finishing machines	22.7%
	Hand tools	32.0%
	Centrifugal separators & others	13.2%
	Parts and repair of automobiles	32.1%

5. Year War Production Began? 1940

Is Plant Now in Operation? Yes

7. Size of Company:

	No. Machines	No. of Employees
Prewar:	209	410
During War:	354	2,333
Post War:	354	734

8. Condition of Plant None % Percent Damaged.

9. Remarks: This company has become one of the specialized manufacturers of textile dyeing and finishing machines in Japan. 70% of the factories engaged in the above were, during the war, forced to dispose of their equipment by the ORDINANCE of READJUSTMENT of ENTERPRISES. The Kyoto Kikai was deleted by SCAPIN 1258.

Enos L. Commons Jr.

Signed Enos L. Commons Jr., Capt. A.C.

Economics Division Officer

This is No 14 of 28 reviews to be submitted.

Reparations Control
Symbol MG-D

Reparations Check Sheet

~~Non-Explosive~~

Munitions

(Cross out one)

1. Name Miyako Sangyo K.K. Code# 22-39
 2. Prefecture: Kyoto Year Built 1939
 3. Reparations Status.

- (a) Listed by Scapin No 1134
 (b) Deleted by Scapin No _____
 (c) Rec. for Deletion None
 (d) Rec. for Addition _____
 (Not yet listed)

4. Products.

	Items	Percent
Prewar:	Fuses for bombs	70%
	Bolts and Nuts	30%
During War:	Fuses for bombs	90%
	Bolts and Nuts	10%
Post War:	Tools and repair of motor-cars	50%
	Parts of bicycle and other	50%

5. Year War Production began? 1941
 6. Is Plant Now in Operation? Yes
 7. Size of Company:

	No. Machines	No. of Employees
Prewar:	88	100
During War:	231	697
Post War:	226	60

8. Condition of Plant None % Percent Damaged.

9. Remarks: **This factory produces 100% of all of the Spinning pumps, Lubricators and Hypochlorinators in Japan, besides 70% of the Electric dryers for chemical and physical experiments and 50% of the Electric furnaces for chemical and physical experiments. This factory was recommended for deletion under SCAPIN 1258 on December 1946 and as yet there has been no answer on the above.**

Enos L. Commons Jr.

Signed Enos L. Commons Jr., Capt. A.C.

Economics Division Officer

This is No 8 of 28 reviews to be submitted.

Paper Control
Symbol MG-3

Reparations Check Sheet

~~Plants~~ Munitions

(Cross out one)

1. Name Yamashina Seikeshe Ltd. Hinooka Code# 22-42
Plant
2. Prefecture: Kyoto Year Built 1917
3. Reparations Status.

- (a) Listed by Scapin No 1134
- (b) Deleted by Scapin No _____
- (c) Rec. for Deletion None
- (d) Rec. for Addition LEARNED TO BE NECESSARY
(Not yet Listed)

4. Products.

	Items	Percent
Prewar:	Brass nails	65%
	Brass wood screws	25%
	Brass Stud bolts and nuts	10%
During War:	Munitions	100%
Post War:	Cotton spinning machines and accessories	100%

5. Year War Production Began? 1938
6. Is Plant Now in Operation? Yes
7. Size of Company:

	No. Machines	No. of Employees
Prewar:	191	480
During War.	346	900
Post War:	347	67

5 01826

775013

Express Control
Symbol MG-D

Reparations Check Sheet

~~XXXXXXXX~~

Munitions

(Cross out one)

1. Name Yamashina Seikosho Ltd. Higashino Code# 22-43

Plant

2. Prefecture: Kyoto Year Built 1937

3. Reparations Status.

(a) Listed by Scapin No 1134

(b) Deleted by Scapin No _____

(c) Rec. for Deletion This is new retention to Scap 3 Mar 47

(d) Rec. for Addition _____
(Not yet Listed)

4. Products.

	Items	Percent
Prewar:	None	0
During War:	Munitions	18%
	Arms	15%
	Brass Nails	20%
	Brass stud bolts and nuts	19%
	Brass wood screws	28%
Post War:	Brass wood screws	17%
	Brass nails	9%
	Oxygen gas	3%
	Cotton spinning machines and accessories	71%

5. Year War Production Began? 1938

6. Is Plant Now in Operation? Yes

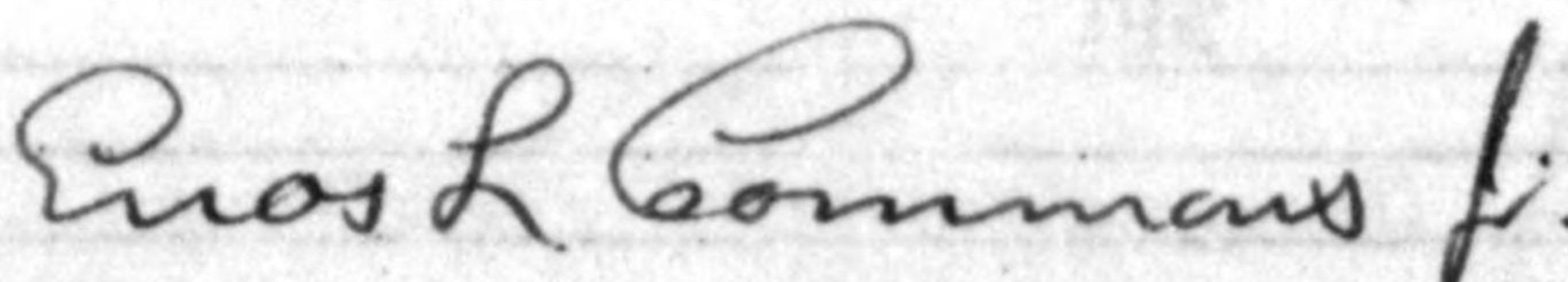
7. Size of Company:

8 01826

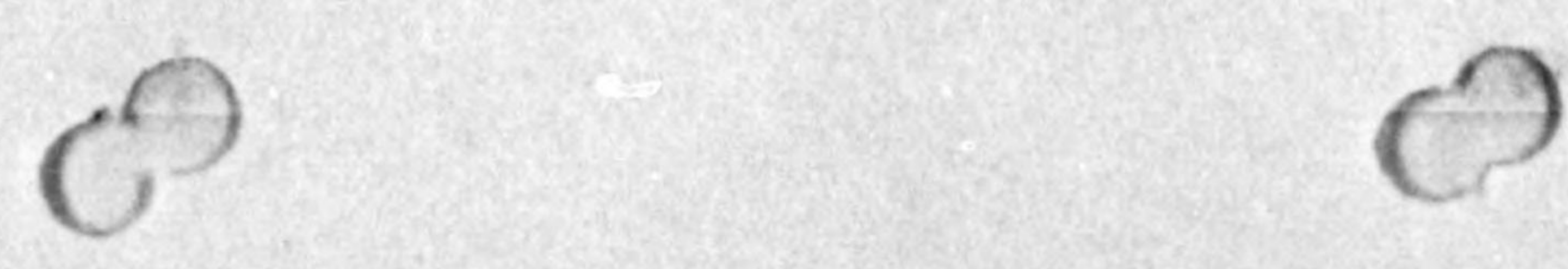
	No. Machines	No. of Employees
Prewar:	None	None
During War:	345	320
Post War:	363	219

8. Condition of Plant None % Percent Damaged.

9. Remarks: With machines transferred from the Hino-oka Plant of the same company, this plant first commenced operation in 1937 by manufacturing screws and nails 1940 sees this plant having a major importance in the manufacture of munitions, which gradually became the most important item of production. At present subject plant has again taken the role of manufacturing nails and screws since reconversion of entire plant is unnecessary and also this is the only plant in existence of this nature since the others were destroyed by air-raids.


 Signed Enos L. Commons Jr., Capt. A.C.
Economics Division Officer

This is No 24 of 28 reviews to be submitted.



Process Control
Symbol MC-B

Reparations Check Sheet

~~XXXXXXXX~~ Munitions

(Cross out one)

1. Name Teikoku Seiki Sangyo K.K. Ayabe Plant Code# 22-49

2. Prefecture: Kyoto Year Built 1945

3. Reparations Status.

(a) Listed by Scapin No 1258

(b) Deleted by ~~XXXXXXXX~~ 2nd Ind. HQ 8th Army, dtd. 2 Jan. 1947.
Basic: Kyoto Mil Govt Team, Dtd. 20 Dec. 1946

(c) Rec. for Deletion No Rec

(d) Rec. for Addition _____
(Not yet Listed)

4. Products.

	Items	Percent
Prewar:	None	0
During War:	None	0
Post War:	None	0

5. Year War Production Began? Did not start.

Is Plant Now in Operation? No

7. Size of Company:

	No. Machines	No. of Employees
Prewar:	None	None
During War:	116	20
Post War:	116	4

MIE MILITARY GOVERNMENT TEAM
APO 710

WLT/si

9 October 1947

SUBJECT: Reparatons Listing of Aircraft and Privately-owned
Munitions Plants

TO : Commanding General, Eighth Army, APO 343
(Attn: Reparations Branch, Mil Govt Section)

1. Reference letter, Headquarters I Corps, AG 004(Rep)-BA, same subject, dated 9 September 1947.
2. In compliance with reference letter, Inclosures 1-9 are transmitted herewith.
3. This completes the reports, required by reference letter with the exception of machinery dispersed from Mitsubishi #7 Plant to Yamamoto Chuze K.K. (23-20), Mie Prefecture. The remaining report will be submitted as soon as possible.

KENNETH B. BURNS
Major, Inf.
Commanding

9 Inclosures:

- Incl.1 -- Reparation Check Sheet on Aichi Aircraft Co., Ltd. (23-2), Mie Prefecture (2 copies)
- Incl.2 -- Reparation Check Sheet on Mitsubishi Heavy Industries, Ltd. (Tsu Plant)(23-3(a) & (b)), Mie Prefecture (2 copies)
- Incl.3 -- Reparation Check Sheet on Nakajima Aircraft Co.,Ltd. (23-6), Mie Prefecture (2 copies)
- Incl.4 -- Reparation Check Sheet on Sumitomo Metal Ind., Ltd. (Tsu Plant)(23-7), Mie Prefecture (2 copies)
- Incl.5 -- Reparation Check Sheet on Amano Works, Ltd. (Mie Plant) (23-15), Mie Prefecture (2 copies)
- Incl.6 -- Reparation Check Sheet on Kondo Aras Co., Ltd. (23-16), Mie Prefecture (2 copies)
- Incl.7 -- Reparation Check Sheet on Asada Precise Co., Ltd. (23-24), Mie Prefecture (2 copies)
- Incl.8 -- Reparation Check Sheet on Mie Industry Co., Ltd. (Tsu Plant)(No Code Number), Mie Prefecture (2 copies)
- Incl.9 -- Reparation Check Sheet on Nakajima Aircraft Co., Ltd. (23-5), Mie Prefecture (2 copies)

MIE MILITARY GOVERNMENT TEAM
APO 710

WLT/si

11 October 1947

10 sheets

SUBJECT: Reparations Listing of Aircraft and Privately-owned
Munitions Plants

TO : Commanding General, Eighth Army, APO 343
(Attn: Reparations Branch, Mil Govt Section)

1. Reference:

a. Letter, Headquarters I Corps, AG 004(Rep)-BA, same subject,
dated 9 September 1947.

b. Letter, this Unit, same subject, dated 9 October 1947.

2. In compliance with reference a, Inclosure 1 is transmitted here-
with.

3. This completes the reports, Mie Prefecture, required by refer-
ence a.

FOR THE COMMANDING OFFICER:

DESMOND P. WILSON
Major, FA
Adjutant

1 Inclosure: Reparation Check Sheet on Yamamoto Chuzo K.K.
(23-20), Mie Prefecture (2 copies)

775013

Report Control Symbol MG-B

REPARATION CHECK SHEET

Aircraft

Munitions-

(Cross out one)

Dispersed Underground

1. Name Aichi Aircraft Co., Ltd. (Tsu Plant)
(Aichi Kokuki K.K. (Tsu Kojo)) Code # 23 - 2

2. Prefecture: Mie 331 Year Built: Construction - March 1945
Operation - April 1945

388

3. Reparation Status:

- (a) Listed by SCAPIN NO: 1263
- (b) Deleted by SCAPIN NO: --
- (c) Rec. for Deletion No
- (d) Rec. for Addition --
 (Not yet listed)

4. Products:

	<u>Items</u>	<u>Percent</u>
(a) Prewar:	<u>None</u>	<u>0</u>
(b) During War	<u>Aero-engine parts</u>	<u>100%</u>
(c) Post War	<u>None</u>	<u>0</u>

5. Year War Production Began: June, 1945

6. Is Plant now in Operation? No

7. Size of Company:

	<u>No. Machines</u>	<u>No. of Employees</u>
(a) Prewar	<u>None</u>	<u>None</u>
(b) During War	<u>602</u>	<u>1,500</u>
(c) Post War	<u>602</u>	<u>7</u>

8. Condition of Plant 10 percent damaged.

Machinery all stored at Ise Naval Arsenal

388

Report Control Symbol MG-B

9. Remarks:

a. Pertinent Critical Information Concerning Conversion to War Production: This factory was constructed underground on March 1st, 1945; therefore, there is no pertinent information concerning conversion to war production.

b. Reconversion to peacetime production: After the War the company did not reconvert into peacetime production. For metal manufacturing all that is needed for conversion to peacetime production is re-aligning the machines and adding new setups, gauges, jigs etc.

c. Effect of removal on economy of Region: Only seven (7) reparation employees would require other employment.

d. Comments relative to stored peacetime equipment not used in war production: None

e. Peacetime equipment used in war production, but vital to reconversion: Only the transformers, generators, motors, switch gear and other electrical equipment are now acutely needed by the civilian Japanese economy.

f. Displacement of Labor: Only seven (7) reparations employees would require other employment.

g. Lack of equivalent non-reparations equipment: Only the transformers, generators, motors, switch gear and other electrical equipment are now acutely needed by the Japanese civilian economy.

Signed: _____

HERBERT B. BURNS
Major, Inf.
Commanding

This is No. 1 of 9 reviews to be submitted.

Report Control Symbol MG-B

REPARATION CHECK SHEET

Aircraft ~~Munitions~~
(Cross out one)

1. Name Mitsubishi Jukogyo K.K. (Yasu Kojo)
Mitsubishi Heavy Industries, Ltd. (Yasu Plant) Code # 23-3 (a) & (b)

2. Prefecture: Mie Year Built: March, 1944

3. Reparation Status:

- (a) Listed by SCAPIN NO: 1263
- (b) Deleted by SCAPIN NO: --
- (c) Rec. for Deletion --
- (d) Rec. for Addition --
(Not yet listed)

4. Products:

	Items	Percent
(a) Prewar:	None	0
(b) During War	Aircraft parts { wings & tail assemblies	100%
(c) Post War	Bicycles	70%
	Electrical appliance	30%

5. Year War Production Began: March, 1944

6. Is Plant now in Operation? Yes

7. Size of Company:

	No. Machines	No. of Employees
(a) Prewar	None	0
(b) During War	4,961	25,000
(c) Post War	4,961 (2000 hand tools)	873

8. Condition of Plant 0 percent damaged.

S 01826

This plant known as Plant 3A
 Finally dismantled down at Itohachi Plant 3B

331

388

Snel

Report Control Symbol MG-B

9. Remarks:

- a. **Pertinent critical information concerning conversion to war:** This factory began operation in March 1944, producing parts for airplanes. The factory space was formerly owned by Kishiwada Spinning Co.; therefore, in order for Mitsubishi to start production, the spinning machines had to be removed and machine tools installed in their places.
- b. **Reconversion to peacetime production:** When the war ended, this plant recon-verted to peacetime production with bicycles and refrigerators as their end products. All that was necessary for reconversion to peacetime production was the replacement of certain machine tools and adding new setups, gauges, jigs, etc.
- c. **Effect of removal on economy of region:** The removal of this equipment would have a marked effect on the economy of the region as eight hundred and seventy-three (873) persons would require other employment. In addition, this plant's finished products are essential to the economy of post-war Japan.
- d. **Comments relative to stored peacetime equipment not used in war production:**
None.
- e. **Peacetime equipment used in war production, but vital to reconversion:**
374 machine tools and electrical equipment, such as transformers, motors, switch gears, generators etc., are vital to reconversion.
- f. **Displacement of Labor:** 873 employees would require other employment.
- g. **Lack of equivalent non-reparations equipment:** Transformers, motors, generators, switch gears etc. are now acutely needed by the civilian Japanese economy.

Note: 23-3(b) is only a warehouse for 23-3(a).

Signed: _____

HERBERT B. BURNS
Major, Inf.
Commanding

This is No. 2 of 9 reviews to be submitted.

REPARATIONS CHECK SHEET

Aircraft ~~MUDDCODE~~
(Cross out one)

See Plant #6

1. Name Nakajima Aircraft Co., Ltd. #1 Yokkaichi Plant Code # 23-5
(Fuji Ind. Co., Ltd. #1 Yokkaichi Kojo)
2. Prefecture Mie Year Built Construction - Feb 1941
Operation - Oct 1943
3. Reparation Status _____
- (a) Listed by SCAPIN No. 1263
- (b) Deleted by SCAPIN No. ---
- (c) Rec. for Deletion No
- (d) Rec. for Addition No
(Not yet listed)

4. Products.

	Items	Percent
(a) Prewar.	None	0
(b) During War.	None	0
(c) Post War.	None	0

5. Year War Production Began? --

6. Is Plant Now in Operation? No

7. Size of Company:

	No. Machines	No. of Employees
(a) Prewar.	None	None
(b) During War.	None	None
(c) Post War	94	None

8. Condition of Plant _____ % Percent Damaged
(These 94 machines were moved from Fuji #2 Plant (23-6) and stored and inventoried in Fuji #1 (23-5))

9. Remarks:

Machinery at this plant moved to Plant 6. This was a dispersal plant of Plant #5 and did not get into operation. Seizable plant which would be available upon a removal of machinery.

• • ○○○○○○○○

• • ○○○○○○○○

• • ○○○○○○○○

Signed _____

This is No. _____ of _____ reviews to be submitted.



Report Control Symbol MG-B

REPARATION CHECK SHEET

Aircraft ~~Munitions~~
(Cross out one)

1. Name Nakajima Hikoki K.K.
(Nakajima Aircraft Co., Ltd.) Code # 23-6

2. Prefecture: Mie Year Built: Construction: 1921
Date acquired by Fujii: Jan, 1943

3. Reparation Status:

- (a) Listed by SCAPIN NO: 1263
- (b) Deleted by SCAPIN NO: -
- (c) Rec. for Deletion No
- (d) Rec. for Addition No
(Not yet listed)

4. Products:

	<u>Items</u>	<u>Percent</u>
(a) Prewar:	<u>None</u>	<u>0</u>
(b) During War	<u>Aircraft parts</u>	<u>100%</u>
(c) Post War	<u>None</u>	<u>0</u>

5. Year War Production Began: November, 1943

6. Is Plant now in Operation? No

7. Size of Company:

	<u>No. Machines</u>	<u>No. of Employees</u>
(a) Prewar	<u>None</u>	<u>None</u>
(b) During War	<u>825</u>	<u>2,728</u>
(c) Post War	<u>825</u>	<u>149</u>

8. Condition of Plant 0 percent damaged. (94 machines were moved from this plant to Fujii #1 (23-5) after the war and were inventoried under Code No. 23-5.)

all of these tools can be stored in a small portion of this plant making it possible to release ^{resources} for production of J1C3 products

Report Control Symbol MG-B

9. Remarks:

- a. **Pertinent critical information concerning conversion to war production:**
This company started operations in June 1943, producing parts for airplanes. The buildings were formerly owned by Hirata Spinning Co. and at the time of purchase the buildings contained spinning machinery which had to be removed before machine tools were installed.
- b. **Reconversion to peacetime production:** When the war ended, this plant did not reconvert into peacetime production. For metal manufacturing, all that is needed is the re-alignment of machine tools and changes in setup.
- c. **Effect of removal on economy of region:** One hundred forty nine (149) employees would require other employment.
- d. **Comments relative to stored peacetime equipment not used in war production:**
None
- e. **Peacetime equipment used in war production but vital to reconversion:**
All of the factory's machinery is needed for reconversion. Only the transformers, motors, generators, switch gear and other electrical equipment is now acutely needed by the civilian Japanese economy.
- f. **Displacement of Labor:** One hundred forty-nine (149) employees would require other employment.
- g. **Lack of equivalent non-reparations facilities:** Only the transformers, generators, motors, switch gear and other electrical equipment are now acutely needed by the civilian Japanese economy.

Signed: _____

KENNETH B. BURNS
Major, Inf.
Commanding
_____This is No. 3 of 9 reviews to be submitted.

775013

Report Control Symbol MG-B

REPARATION CHECK SHEET

Aircraft

Munitions

(Cross out one)

~~Sumitomo Metal Ind. Ltd. (Tsu Plant)~~

1. Name (Sumitomo Kinzoku Kogyo K.K. (Tsu Kojo)) Code # 23-7

2. Prefecture: Mie Year Built: Construction - August 1943
Operation - Dec., 1943

3. Reparation Status:

- (a) Listed by SCAPIN NO: 1263
- (b) Deleted by SCAPIN NO: ---
- (c) Rec. for Deletion ---
- (d) Rec. for Addition ---
 (Not yet listed)

4. Products:

	<u>Items</u>	<u>Percent</u>
(a) Prewar:	<u>None</u>	<u>0</u>
(b) During War	<u>Propellers</u>	<u>100%</u>
(c) Post War	<u>None</u>	<u>0</u>

5. Year War Production Began: 1943

6. Is Plant now in Operation? No

7. Size of Company:

	<u>No. Machines</u>	<u>No. of Employees</u>
(a) Prewar	<u>---</u>	<u>---</u>
(b) During War	<u>518</u>	<u>2,760</u>
(c) Post War	<u>518</u>	<u>52</u>

8. Condition of Plant 20 Machinery all worn and in storage at
Iso Naval Arsenal percent damaged.



Bldgs vacant were acquired by
Sumitomo in 1943 - former textile
plant - in good condition - vacant - and
incl & space needed badly in Iso

Report Control Symbol MG-B

9. Remarks:

- a. **Pertinent critical information concerning conversion to war production:**
This company was constructed in 1943 and started production in December 1943, manufacturing airplane propellers. This Plant did not operate before the war, therefore it has no critical information concerning conversion to war production.
- b. **Reconversion to peacetime production:** When the war ended, this plant did not reconvert to peacetime production. For metal manufacturing, all that is necessary for conversion to peacetime production is realigning the machine tools and adding new set-ups, gauges, jigs, etc.
- c. **Effect of removal on economy of region:** Fifty-two (52) reparations employees would require other employment.
- d. **Comments relative to stored peacetime equipment not used in war production:**
None
- e. **Peacetime equipment used in wartime but vital to reconversion:**
All of the factory's machinery is vital to reconversion. Only the transformers, generators, motors, switch gear and other electrical equipment are now acutely needed by the civilian Japanese economy.
- f. **Displacement of Labor:**
Fifty-two (52) reparations employees would require other employment.
- g. **Lack of equivalent non-reparations facilities:**
The transformers, switch gears, motors, generators and other electrical equipment are now acutely needed by the Japanese civilian economy.

Signed: _____

KENNETH B. BURNS
Major, Inf.
Commanding

This is No. 4 of 9 reviews to be submitted.

Report Control Symbol MG-B

REPARATION CHECK SHEET

~~Aircraft~~ Munitions
(Cross out one)

1. Name Anano Seisakusho K.K. (Mie Kejo) Code # 23 - 15
(Anano Werke, Ltd. Mie Plant) Construction - 1 Aug 1944
 Operation - 1944

2. Prefecture: Mie Year Built: _____

3. Reparation Status:

(a) Listed by SCAPIN NO: 1134
 (b) Deleted by SCAPIN NO: ---
 (c) Rec. for Deletion No
 (d) Rec. for Addition ---
 (Not yet listed)

4. Products:

	<u>Items</u>	<u>Percent</u>
(a) Prewar:	<u>None</u>	<u>0</u>
(b) During War	<u>Torpedo parts, - Possibly final torpedo assembly Time Recorders and Time Stamps (assembled)</u>	<u>100%</u>
(c) Post War	<u>None</u>	<u>0</u>

5. Year War Production Began: 15 August 1944

6. Is Plant now in Operation? No

7. Size of Company:

	<u>No. Machines</u>	<u>No. of Employees</u>
(a) Prewar	<u>None</u>	<u>None</u>
(b) During War	<u>62</u>	<u>226</u>
(c) Post War	<u>62</u>	<u>11</u>

8. Condition of Plant 0 percent damaged.

2/15

Report Control Symbol MG-B

9. Remarks:

- a. Pertinent critical information concerning conversion to war:
As soon as the buildings were constructed in 1944, this plant began to operate. Therefore, this plant did not have to convert to war production.
- b. Reconversion to peacetime production:
When the war ended, this plant did not convert into peacetime production. For metal manufacturing, all that is necessary for conversion to peacetime production is realining the machines and adding new set-ups, gauges and jigs.
- c. Effect of removal on economy of region:
Only 7 reparation employees would require other employment.
- d. Comments relative to stored peacetime equipment not used in war production: None
- e. Peacetime equipment used in war production but vital to reconversion:
All of this factory's machinery is vital to reconversion. Only the transformers are now acutely needed by the civilian Japanese economy.
- f. Displacement of Labor:
Only 7 reparation employees would require other employment.
- g. Lack of equivalent non-reparations facilities:
Only the transformers are now acutely needed by the civilian Japanese economy.

Signed: _____

KENNETH B. BURNS
Major, Inf.
Commanding _____This is No. 5 of 9 reviews to be submitted.

Report Control Symbol MG-B

REPARATION CHECK SHEET

~~Aircraft~~ Munitions
(Cross out one)

1. Name Kondo Heiki K.K.
(Kondo Arms Co., Ltd.) Code # 23-16

2. Prefecture: Mie Year Built: Construction - April 1925
Operation - 1925

3. Reparation Status: *Acquired from Springfield
factory around 1944*

- (a) Listed by SCAPIN NO: 1134
- (b) Deleted by SCAPIN NO: ---
- (c) Rec. for Deletion Part of plant was recommended for deletion.
- (d) Rec. for Addition No
(Not yet listed)

4. Products:

	<u>Items</u>	<u>Percent</u>
(a) Prewar:	Woolen Textile	100%
(b) During War	Fuse parts	100%
(c) Post War	Clock Furniture	70% 30%

5. Year War Production Began: July, 1944

6. Is Plant now in Operation? Yes

7. Size of Company:

	<u>No. Machines</u>	<u>No. of Employees</u>
(a) Prewar	127	330
(b) During War	408	560
(c) Post War	462 (Purchased 54 machines after the war.)	240

8. Condition of Plant 0 percent damaged. S 01826

Incl 6

Report Control Symbol MG-B

9. Remarks:

a. Pertinent critical information concerning conversion to War:

This company was founded in 1925 and was a wool spinning mill until August 1943. Because of the governmental readjustment of the textile industry, this factory had to be closed and the spinning machinery removed. The plant started producing fuses in July 1944. All of the spinning machines were removed by that time.

b. Reconversion to peacetime production: At the close of war, the company reconverted into peacetime production with clocks and furniture as their end products. There was no major reconversion as the machines used for manufacturing fuses were also used in producing parts for clocks and furniture, through changes in setup on machinery.

c. Effect of removal on economy of region: If this equipment is removed for reparations, it would hinder the economy of this region, as the company is producing clocks and furniture which is needed throughout Japan. In addition, two hundred & forty (240) employees would require other employment.

d. Comment relative to stored peacetime equipment not used in wartime production: In this plant there is no peacetime equipment not used in wartime production, since the spinning machinery used in said plant for spinning wool until August 1943, was moved to Daido Woolen Textile Mfg. Co., Ltd., Tokyo, Japan, and the woodworking machinery and clock machinery was moved into subject plant from 25 February 1946 until 15 August 1946.

e. Peacetime equipment used in war-production, but vital to reconversion: As far as can be ascertained, the transformers, generators, motors, switch gears etc. used in war production are now acutely needed by the Japanese economy.

Signed: _____

REYNOLD B. BROWN
Major, Inf.
Commanding

This is No. 6 of 9 reviews to be submitted.

f. Displacement of Labor: Two hundred & forty (240) employees would require other employment in the event this plant is moved for reparations.

g. Lack of equivalent non-reparations equipment: Transformers, generators, motors, switch gears etc. are now acutely needed by the civilian Japanese economy.

Report Control Symbol MG-B

REPARATION CHECK SHEET

Aircraft ~~-Munitions-~~
(Cross out one)

1. Name: Yamamoto Chuzo K.K. (Dispersed from Mitsubishi #7 Plant in April 1945) Code No. 23 - 20
(Yamamoto Casting Works, Ltd.)
2. Prefecture: Mie Year Built: Construction - Feb, 1942
3. Reparation Status:
- (a) Listed by SCAPIN NO: 1263
 - (b) Deleted by SCAPIN NO: --
 - (c) Rec. for Deletion No *More*
 - (d) Rec. for Addition --
(Not yet listed)
4. Products:
- | | <u>Item</u> | <u>Percent</u> |
|----------------|----------------|----------------|
| (a) Pre-war | None | 0 |
| (b) During War | Airplane parts | 100% |
| (c) Post War | None | 0 |
5. Year War Production Began: See files of Mitsubishi #7 Plant.
6. Is Plant now in Operation? These machines are not in use.
7. Size of Company:
- | | <u>No. Machines</u> | <u>No. of Employees</u> |
|----------------|---------------------------------|----------------------------------|
| (a) Pre-war | See file of Mitsubishi #7 Plant | See file of Mitsubishi #7 Plant. |
| (b) During War | See file of Mitsubishi #7 Plant | See file of Mitsubishi #7 Plant. |
| (c) Post War | See file of Mitsubishi #7 Plant | See file of Mitsubishi #7 Plant. |
8. Condition of Plant 0 percent damaged.

encl

Report Control Symbol MG-B

9. Remarks:

a. Pertinent critical information concerning conversion to war:

This company borrowed 4 machine tools from Mitsubishi Plant No. 7 in Okayama Prefecture in April 1945, but were not used for war production by subject company. However, these machines were used during the war to produce airplane parts in the plant of Mitsubishi #7 Plant.

b. Reconversion to peacetime production:

When the war ended, these machines were not used for reconversion to peacetime production. They were moved to Mitsubishi Plant No. 3 at Tsu-shi, Mie Prefecture for centralization and maintenance.

c. Effect of removal on economy of region: None

d. Comments relative to stored peacetime equipment not used in war production:

None.

e. Peacetime equipment used in wartime, but vital to reconversion: None.

f. Displacement of Labor: None

g. Lack of equivalent non-reparations facilities: None.

FOR THE COMMANDING OFFICER:

Signed:

Desmond P. Wilson

DESMOND, P. WILSON

Major, FA

Adjutant

This is No. 7 of 10 reviews to be submitted.

P

Q

Report Control Symbol MG-B

REPARATION CHECK SHEET

Aircraft

Munitions

(Cross out one)

1. Name Asada Seiko K.K. Code # 23 - 24
(Asada Precision Co., Ltd.)

2. Prefecture: Mie Year Built: Construction - 22 July 1939
Buying Date - Feb 1942
Operation - 3 Oct 1939

3. Reparation Status:
 (a) Listed by SCAPIN NO: 1376
 (b) Deleted by SCAPIN NO: No
 (c) Rec. for Deletion ---
 (d) Rec. for Addition ---
 (Not yet listed)

4. Products:

	Items	Percent
(a) Prewar:	Gauge and Tools	100%
(b) During War	Torpedo parts	90%
	Gauge & tools	10%
(c) Post War	Fishing net machine	80%
	Ring doubling frame	20%

5. Year War Production Began: February 1940

6. Is Plant now in Operation? Yes

7. Size of Company:

	No. Machines	No. of Employees
(a) Prewar	163	315
(b) During War	191	459
(c) Post War	194	195

8. Condition of Plant 0 percent damaged.

S 01826

2.07

Report Control Symbol MG-B

9. Remarks:

a. Pertinent critical information concerning conversion to war production: This plant was constructed in July 1939 by Koa Seiko Co., Ltd. for the purpose of manufacturing gauges and jigs. It was purchased by Asada Seiko K.K. in February 1942. Change of set-ups and the addition of jigs and gauges was all that was necessary to convert to war production or to convert to peacetime production.

b. Reconversion to peacetime production: At the termination of war, this company reconverted to peacetime production, manufacturing fishing net machines and ring doubling frames, using the same machine tools formerly used in manufacturing gauges, jigs and torpedo parts. Again, the change in set-ups and addition of different gauges and jigs were all that was necessary for reconversion.

c. Effect of removal on economy of region: If the equipment in this plant is removed for reparations, it would seriously affect the economy of the region, as fishing net machines and ring doubling frames are a scarce item in Japan and are sorely needed to increase food production and textile production; in addition, 195 employes would require other employment.

This company recently won a commendation from Commerce and Industry Section for the best type fishing net machine in an export exhibit at Nagoya, Japan.

This company has back orders for 300 fishing net machines and 30 ring doubling frames. Their average monthly production is 12 fishing net machines and 2 ring doubling frames, which means they now have back orders for 2 and half years of production at their present production rate.

(Carried forward)

Signed: _____

WALTER B. BROWN
Major, Inf.
Commanding

This is No. 8 of 9 reviews to be submitted.

(Brought forward)

- d. Comments relative to stored peacetime equipment not used in war production:

None.

- e. Peacetime equipment used in war production but vital to reconversion:

All of this company's machine tools and electrical equipment such as transformers, motors, generators, switch gears etc. is vital for reconversion to peacetime production.

- f. Displacement of Labor:

If this plant is taken for reparations, 195 employees would require other employment.

- g. Lack of equivalent non-reparations facilities:

Transformers, generators, motors, switch gear and other electrical equipment are now acutely needed by the civilian Japanese economy.

Report Control Symbol MG-B

REPARATION CHECK SHEET

Aircraft Munitions

(Cross out one)

1. Name Mie Kogyo K.K. (Tsu Hojo)
Mie Industry Co., Ltd. (Tsu Factory) Code # ---

2. Prefecture: Mie Year Built: October 1943

3. Reparation Status:

- (a) Listed by SCAPIN NO: ---
- (b) Deleted by SCAPIN NO: ---
- (c) Rec. for Deletion ---
- (d) Rec. for Addition Yes
 (Not yet listed)

4. Products:

	Items	Percent
(a) Prewar:	None	0
(b) During War	Bomb dropping gears Bomb release controllers Simple gun mount for 13 mm MG Radio generator for aircraft	100%
(c) Post War	None	0

5. Year War Production Began: April 1944

6. Is Plant now in Operation? No

7. Size of Company:

	No. Machines	No. of Employees
(a) Prewar	---	---
(b) During War	308	2,500
(c) Post War	103	None

8. Condition of Plant 95 percent damaged.

mc 8

Report Control Symbol MG-B

9. Remarks:

- a. Pertinent critical information concerning conversion to war production:
This factory was constructed in October 1943 and started production in April 1944, therefore this plant did not have to convert to war production.
- b. Reconversion to peacetime production:
This plant did not convert to peacetime production as it was 95% destroyed by air raids.
- c. Effect of removal on economy of region:
No effect on the economy of the region would be noted if this plant is removed for reparations.
- d. Comments relative to stored peacetime equipment not used in war production: None.
- e. Peacetime equipment used in war production, but vital to conversion:
Only transformers are now acutely needed by the civilian Japanese economy.
- f. Displacement of Labor: None.
- g. Lack of equivalent non-reparations facilities:
Only the transformers are now acutely needed by the civilian Japanese economy.

Note: - This plant has not been placed on reparations list, but has been recommended for addition.

Signed:

KENNETH B. BURNS
Major, Inf., Commanding

This is No. 9 of 9 reviews to be submitted.