

COUNCIL PUTS BAN ON SUNDAY DANCING! ANNUAL FESTIVAL FOR CHILDREN FRIDAY NIGHT

HALLO-KIWANIS PARADE AND PARTY BIG EVENTS

Entertainment to Start with Monster Pageant at 7:30 o'Clock, Followed by Games and Bonfire at Harvard School Field

The stage is set and all is in readiness for the big Hallo-Kiwanis festival scheduled for tomorrow night, in which all children of Glendale and the San Fernando valley have been invited to participate by the Glendale Kiwanis club.

DOHENY OIL OIL INQUIRY CHANGED

Counsel Suddenly Decides to End Government Side of Elks Hills Trial

LOS ANGELES, Oct. 30.—Suddenly changing plans, Owen J. Roberts, government counsel, decided he would end today the government's side in the suit to cancel E. L. Doheny's naval oil reserve leases, on trial here in federal court.

URGES WIRES AT AIRPORT MOVED

W. B. Kinner Is Speaker at Chamber of Commerce Luncheon Today

An appeal to members of the chamber of commerce luncheon club to solidly back efforts to induce the city of Glendale to remove the electric wires across the south end of the Glendale airport flying field was made at the weekly luncheon today at noon by W. B. Kinner, of the Kinner Airplane Co.

President W. E. Hewitt of the chamber also urged the support of all Glendaleans in an effort to have the wires removed immediately. The possibilities of Glendale airport becoming one of the leading commercial fields when Clover field is closed next year, was stressed by Mr. Kinner.

Chicago Steel Orders Continue To Increase

CHICAGO, Oct. 30.—Orders for steel in the Chicago district during this month probably will exceed those of September which were nearly 100 per cent above August. Recently railroads have ordered 100,000 tons of rails while demand for metal for automobiles and railroad cars is large.

Bandit Gets \$3,500 With Sheriff Next Door

WEAVERVILLE, Cal., Oct. 30.—Sheriff's posse were searching today the wilds of Trinity county for the lone bandit who held up the county treasury in broad daylight late yesterday and escaped with \$3,500. The holdup was staged with only a thin wall separating the treasurer's office from the sheriff's office where husky deputies smoked unaware of the activities of the bandit.

PRICE PLACED ON HEAD OF WAR LORD

China Christian General Has Reward for Wu Pei Fu Dead or Alive

PEKING, China, Oct. 30.—A price of \$50,000 has been put on the head of Wu Pei Fu, until a week ago China's most powerful war lord.

Golf Pro Absolved From Caddie Kidnaping Affair

CHICAGO, Oct. 30.—Walter Hagen, professional golfer, and holder of the British open championship, was absolved today from charges of having kidnaped Robert Burns Brougham, caddie, and taking him on an exhibition tour through the southwest.

College Girl Is Killed, Father Dying In Crash

LINCOLN, Neb., Oct. 30.—Ruby Smith, 18, of Rokeby, Neb., a freshman at Nebraska Wesleyan university, was killed and her father, S. P. Smith, was fatally injured when the automobile in which they were riding was struck by a west-bound Missouri Pacific train at Barnes' Crossing, near here, shortly before 9 a. m. today.

U. S. to Sue Papers for Income Tax Publication

WASHINGTON, Oct. 30.—Attorney-General Stone announced today that he had asked "several" United States attorneys to present suitable cases against newspapers within their jurisdictions charging publication of income tax lists "in violation of the law."

G. O. P. Comes Back At Bourbon Charge

WASHINGTON, Oct. 30.—Replying to the Democratic charges that American diplomats on leave in the United States were being used in the Republican campaign, James B. Reynolds, director of the local office of the Republican National committee, today charged John W. Davis, the Democratic presidential nominee, with participating in his party's campaign in 1920 while he was ambassador to Great Britain.

SUES FOR DIVORCE

LOS ANGELES, Oct. 30.—Barnes Oldfield, famous automobile race driver, brought suit for divorce here today. Ira Brunk, Oldfield's attorney, at the time he filed Oldfield's suit also filed a suit for divorce against Mrs. Brunk.

STORM HEADS THIS WAY AT SEA

PORTLAND, Ore., Oct. 30.—A new storm from the sea is heading inland and should strike the Oregon-Washington coast about noon today, the district office of the weather bureau announced.

TORIES GAIN SEATS IN ENGLAND

LONDON, Oct. 30.—Tory gains continued to mount up as more than half of the 615 constituencies reported shortly after noon today. At that time the Tories had won 195 seats, Labor 85, Liberals 30 and others 9.

Mate of Woman Found Dead In Mine, Suicide

BELVIDERE, Ill., Oct. 30.—Frank Thomas, railroad worker, held in jail here as a material witness in the murder of his wife, Grace, whose nude body was found in an abandoned mine shaft near here, committed suicide in his cell here some time during the night by hanging himself to a bar of his cell. He was found dead today.

70,000 Victims Listed In Ukraine Massacre

LONDON, Oct. 30.—The following dispatch was received from Sofia: "The newspaper Pravda of Moscow is quoted as authority for the statement there have been 70,000 anti-semitic massacres in the Ukraine during the last year, was won today by Twelve Pointer Bachelor's Fort ran second and Verdict third.

MURDER MYSTERY

LOS ANGELES, Oct. 30.—Police here today confessed they were completely baffled by the finding of a man's body with a silk cord around the neck in a city park. The man had been murdered, police said. Efforts to identify the body were fruitless.

LATEST NEWS

STORM WILL NOT REACH SOUTHLAND

LOS ANGELES, Oct. 30.—A storm in the north has turned inland and will not extend to Southern California, supplying more rain as was promised, weather bureau officials said here today. The remainder of the week will be fair.

TORIES CAPTURE MORE THAN 400 SEATS

LONDON, Oct. 30.—6 p. m.—Their landslide victory—one of the greatest in recent years—probably will give the Tories 400 or more seats in the House of Commons. They will dominate parliament completely. Returns up to this hour showed the following results: Tories, 392; Laborites, 150; Liberals, 39; others, 9. Only twenty-five more constituencies are to be heard from. So overwhelming was the Tory victory that the Labor government of Premier Ramsay MacDonald is expected to resign immediately. Stanley Baldwin, leader of the Tory party, is picked as the next premier.

REFUSES TO HALT INCOME TAX PUBLICITY

CLEVELAND, Oct. 30.—Holding that no property rights were involved and that returns of income taxes are the property of the United States to be disclosed or not as Congress in its discretion may determine, Federal Judge D. C. Westenhaver this afternoon refused an injunction to J. W. Reavis, who had asked that Collector of Internal Revenue Carl F. Routzahn be enjoined from disclosing the amount of income tax paid by him.

RECOVER DIAMONDS

LOS ANGELES, Oct. 30.—Diamonds valued at \$14,000, stolen from the home of J. J. Vosberg, were returned to their owner today after the alleged confession of Herman Harper, 20, Vosberg's chauffeur, that he had stolen the gems and secreted them in the home of a friend.

STORM HEADS THIS WAY AT SEA

PORTLAND, Ore., Oct. 30.—A new storm from the sea is heading inland and should strike the Oregon-Washington coast about noon today, the district office of the weather bureau announced.

TORIES GAIN SEATS IN ENGLAND

LONDON, Oct. 30.—Tory gains continued to mount up as more than half of the 615 constituencies reported shortly after noon today. At that time the Tories had won 195 seats, Labor 85, Liberals 30 and others 9.

Mate of Woman Found Dead In Mine, Suicide

BELVIDERE, Ill., Oct. 30.—Frank Thomas, railroad worker, held in jail here as a material witness in the murder of his wife, Grace, whose nude body was found in an abandoned mine shaft near here, committed suicide in his cell here some time during the night by hanging himself to a bar of his cell. He was found dead today.

70,000 Victims Listed In Ukraine Massacre

LONDON, Oct. 30.—The following dispatch was received from Sofia: "The newspaper Pravda of Moscow is quoted as authority for the statement there have been 70,000 anti-semitic massacres in the Ukraine during the last year, was won today by Twelve Pointer Bachelor's Fort ran second and Verdict third.

MURDER MYSTERY

LOS ANGELES, Oct. 30.—Police here today confessed they were completely baffled by the finding of a man's body with a silk cord around the neck in a city park. The man had been murdered, police said. Efforts to identify the body were fruitless.

LATEST NEWS

STORM WILL NOT REACH SOUTHLAND

LOS ANGELES, Oct. 30.—A storm in the north has turned inland and will not extend to Southern California, supplying more rain as was promised, weather bureau officials said here today. The remainder of the week will be fair.

TORIES CAPTURE MORE THAN 400 SEATS

LONDON, Oct. 30.—6 p. m.—Their landslide victory—one of the greatest in recent years—probably will give the Tories 400 or more seats in the House of Commons. They will dominate parliament completely. Returns up to this hour showed the following results: Tories, 392; Laborites, 150; Liberals, 39; others, 9. Only twenty-five more constituencies are to be heard from. So overwhelming was the Tory victory that the Labor government of Premier Ramsay MacDonald is expected to resign immediately. Stanley Baldwin, leader of the Tory party, is picked as the next premier.

REFUSES TO HALT INCOME TAX PUBLICITY

CLEVELAND, Oct. 30.—Holding that no property rights were involved and that returns of income taxes are the property of the United States to be disclosed or not as Congress in its discretion may determine, Federal Judge D. C. Westenhaver this afternoon refused an injunction to J. W. Reavis, who had asked that Collector of Internal Revenue Carl F. Routzahn be enjoined from disclosing the amount of income tax paid by him.

RECOVER DIAMONDS

LOS ANGELES, Oct. 30.—Diamonds valued at \$14,000, stolen from the home of J. J. Vosberg, were returned to their owner today after the alleged confession of Herman Harper, 20, Vosberg's chauffeur, that he had stolen the gems and secreted them in the home of a friend.

Work Starts on Span Over L. A. River

LOS ANGELES, Oct. 30.—Construction has commenced on the new \$120,000 Los Feliz road bridge over the Los Angeles river, which will better link Hollywood with Glendale and Pasadena. Thomas Kelly, general contractor, has the work under way with a steam shovel and a dozen men preparing for a crew of 200 concrete workers. The decaying condition of the old bridge was revealed by excavations. It was said. Traffic is retarded slightly by improvement work.

TORIES GAIN SEATS IN ENGLAND

LONDON, Oct. 30.—Tory gains continued to mount up as more than half of the 615 constituencies reported shortly after noon today. At that time the Tories had won 195 seats, Labor 85, Liberals 30 and others 9.

Mate of Woman Found Dead In Mine, Suicide

BELVIDERE, Ill., Oct. 30.—Frank Thomas, railroad worker, held in jail here as a material witness in the murder of his wife, Grace, whose nude body was found in an abandoned mine shaft near here, committed suicide in his cell here some time during the night by hanging himself to a bar of his cell. He was found dead today.

70,000 Victims Listed In Ukraine Massacre

LONDON, Oct. 30.—The following dispatch was received from Sofia: "The newspaper Pravda of Moscow is quoted as authority for the statement there have been 70,000 anti-semitic massacres in the Ukraine during the last year, was won today by Twelve Pointer Bachelor's Fort ran second and Verdict third.

MURDER MYSTERY

LOS ANGELES, Oct. 30.—Police here today confessed they were completely baffled by the finding of a man's body with a silk cord around the neck in a city park. The man had been murdered, police said. Efforts to identify the body were fruitless.

LATEST NEWS

STORM WILL NOT REACH SOUTHLAND

LOS ANGELES, Oct. 30.—A storm in the north has turned inland and will not extend to Southern California, supplying more rain as was promised, weather bureau officials said here today. The remainder of the week will be fair.

TORIES CAPTURE MORE THAN 400 SEATS

LONDON, Oct. 30.—6 p. m.—Their landslide victory—one of the greatest in recent years—probably will give the Tories 400 or more seats in the House of Commons. They will dominate parliament completely. Returns up to this hour showed the following results: Tories, 392; Laborites, 150; Liberals, 39; others, 9. Only twenty-five more constituencies are to be heard from. So overwhelming was the Tory victory that the Labor government of Premier Ramsay MacDonald is expected to resign immediately. Stanley Baldwin, leader of the Tory party, is picked as the next premier.

REFUSES TO HALT INCOME TAX PUBLICITY

CLEVELAND, Oct. 30.—Holding that no property rights were involved and that returns of income taxes are the property of the United States to be disclosed or not as Congress in its discretion may determine, Federal Judge D. C. Westenhaver this afternoon refused an injunction to J. W. Reavis, who had asked that Collector of Internal Revenue Carl F. Routzahn be enjoined from disclosing the amount of income tax paid by him.

RECOVER DIAMONDS

LOS ANGELES, Oct. 30.—Diamonds valued at \$14,000, stolen from the home of J. J. Vosberg, were returned to their owner today after the alleged confession of Herman Harper, 20, Vosberg's chauffeur, that he had stolen the gems and secreted them in the home of a friend.

JOHNSON MAY PURCHASE OAKLAND

Senators' Pitching Ace Says Club 'Looks Good' on His Arrival In L. A.

LOS ANGELES, Oct. 30.—Walter Johnson, famous Washington club pitching ace, who returned here today from a visit in northern California, said on arrival he liked the Oakland club of the Pacific Coast league and was considering its purchase.

TORIES GAIN SEATS IN ENGLAND

LONDON, Oct. 30.—Tory gains continued to mount up as more than half of the 615 constituencies reported shortly after noon today. At that time the Tories had won 195 seats, Labor 85, Liberals 30 and others 9.

Mate of Woman Found Dead In Mine, Suicide

BELVIDERE, Ill., Oct. 30.—Frank Thomas, railroad worker, held in jail here as a material witness in the murder of his wife, Grace, whose nude body was found in an abandoned mine shaft near here, committed suicide in his cell here some time during the night by hanging himself to a bar of his cell. He was found dead today.

70,000 Victims Listed In Ukraine Massacre

LONDON, Oct. 30.—The following dispatch was received from Sofia: "The newspaper Pravda of Moscow is quoted as authority for the statement there have been 70,000 anti-semitic massacres in the Ukraine during the last year, was won today by Twelve Pointer Bachelor's Fort ran second and Verdict third.

MURDER MYSTERY

LOS ANGELES, Oct. 30.—Police here today confessed they were completely baffled by the finding of a man's body with a silk cord around the neck in a city park. The man had been murdered, police said. Efforts to identify the body were fruitless.

LATEST NEWS

STORM WILL NOT REACH SOUTHLAND

LOS ANGELES, Oct. 30.—A storm in the north has turned inland and will not extend to Southern California, supplying more rain as was promised, weather bureau officials said here today. The remainder of the week will be fair.

TORIES CAPTURE MORE THAN 400 SEATS

LONDON, Oct. 30.—6 p. m.—Their landslide victory—one of the greatest in recent years—probably will give the Tories 400 or more seats in the House of Commons. They will dominate parliament completely. Returns up to this hour showed the following results: Tories, 392; Laborites, 150; Liberals, 39; others, 9. Only twenty-five more constituencies are to be heard from. So overwhelming was the Tory victory that the Labor government of Premier Ramsay MacDonald is expected to resign immediately. Stanley Baldwin, leader of the Tory party, is picked as the next premier.

REFUSES TO HALT INCOME TAX PUBLICITY

CLEVELAND, Oct. 30.—Holding that no property rights were involved and that returns of income taxes are the property of the United States to be disclosed or not as Congress in its discretion may determine, Federal Judge D. C. Westenhaver this afternoon refused an injunction to J. W. Reavis, who had asked that Collector of Internal Revenue Carl F. Routzahn be enjoined from disclosing the amount of income tax paid by him.

RECOVER DIAMONDS

\$1,600,000 Sewer Contracts Signed

By Mayor Robinson

Contracts between the City of Glendale and the contractors who will install the new \$1,600,000 sewer system, were signed by Mayor Spencer Robinson today after the City Council had passed three resolutions approving the surety bonds posted by the contractors to the contractors to assure the completion of the work in specified time.

TORIES GAIN SEATS IN ENGLAND

LONDON, Oct. 30.—Tory gains continued to mount up as more than half of the 615 constituencies reported shortly after noon today. At that time the Tories had won 195 seats, Labor 85, Liberals 30 and others 9.

Mate of Woman Found Dead In Mine, Suicide

BELVIDERE, Ill., Oct. 30.—Frank Thomas, railroad worker, held in jail here as a material witness in the murder of his wife, Grace, whose nude body was found in an abandoned mine shaft near here, committed suicide in his cell here some time during the night by hanging himself to a bar of his cell. He was found dead today.

70,000 Victims Listed In Ukraine Massacre

LONDON, Oct. 30.—The following dispatch was received from Sofia: "The newspaper Pravda of Moscow is quoted as authority for the statement there have been 70,000 anti-semitic massacres in the Ukraine during the last year, was won today by Twelve Pointer Bachelor's Fort ran second and Verdict third.

MURDER MYSTERY

LOS ANGELES, Oct. 30.—Police here today confessed they were completely baffled by the finding of a man's body with a silk cord around the neck in a city park. The man had been murdered, police said. Efforts to identify the body were fruitless.

LATEST NEWS

STORM WILL NOT REACH SOUTHLAND

LOS ANGELES, Oct. 30.—A storm in the north has turned inland and will not extend to Southern California, supplying more rain as was promised, weather bureau officials said here today. The remainder of the week will be fair.

TORIES CAPTURE MORE THAN 400 SEATS

LONDON, Oct. 30.—6 p. m.—Their landslide victory—one of the greatest in recent years—probably will give the Tories 400 or more seats in the House of Commons. They will dominate parliament completely. Returns up to this hour showed the following results: Tories, 392; Laborites, 150; Liberals, 39; others, 9. Only twenty-five more constituencies are to be heard from. So overwhelming was the Tory victory that the Labor government of Premier Ramsay MacDonald is expected to resign immediately. Stanley Baldwin, leader of the Tory party, is picked as the next premier.

REFUSES TO HALT INCOME TAX PUBLICITY

CLEVELAND, Oct. 30.—Holding that no property rights were involved and that returns of income taxes are the property of the United States to be disclosed or not as Congress in its discretion may determine, Federal Judge D. C. Westenhaver this afternoon refused an injunction to J. W. Reavis, who had asked that Collector of Internal Revenue Carl F. Routzahn be enjoined from disclosing the amount of income tax paid by him.

RECOVER DIAMONDS

LOS ANGELES, Oct. 30.—Diamonds valued at \$14,000, stolen from the home of J. J. Vosberg, were returned to their owner today after the alleged confession of Herman Harper, 20, Vosberg's chauffeur, that he had stolen the gems and secreted them in the home of a friend.

ORDINANCE TO REGULATE CLOSING HOURS

Must Cease at Midnight on Saturday, Is Ruling of Councilmen

City Council today put a ban on public dancing on Sunday within the city limits of Glendale. It was a unanimous vote in the absence of Councilman C. E. Kimlin. The ordinance becomes effective thirty days from today.

TORIES GAIN SEATS IN ENGLAND

LONDON, Oct. 30.—Tory gains continued to mount up as more than half of the 615 constituencies reported shortly after noon today. At that time the Tories had won 195 seats, Labor 85, Liberals 30 and others 9.

Mate of Woman Found Dead In Mine, Suicide

BELVIDERE, Ill., Oct. 30.—Frank Thomas, railroad worker, held in jail here as a material witness in the murder of his wife, Grace, whose nude body was found in an abandoned mine shaft near here, committed suicide in his cell here some time during the night by hanging himself to a bar of his cell. He was found dead today.

70,000 Victims Listed In Ukraine Massacre

LONDON, Oct. 30.—The following dispatch was received from Sofia: "The newspaper Pravda of Moscow is quoted as authority for the statement there have been 70,000 anti-semitic massacres in the Ukraine during the last year, was won today by Twelve Pointer Bachelor's Fort ran second and Verdict third.

MURDER MYSTERY

LOS ANGELES, Oct. 30.—Police here today confessed they were completely baffled by the finding of a man's body with a silk cord around the neck in a city park. The man had been murdered, police said. Efforts to identify the body were fruitless.

LATEST NEWS

STORM WILL NOT REACH SOUTHLAND

LOS ANGELES, Oct. 30.—A storm in the north has turned inland and will not extend to Southern California, supplying more rain as was promised, weather bureau officials said here today. The remainder of the week will be fair.

TORIES CAPTURE MORE THAN 400 SEATS

LONDON, Oct. 30.—6 p. m.—Their landslide victory—one of the greatest in recent years—probably will give the Tories 400 or more seats in the House of Commons. They will dominate parliament completely. Returns up to this hour showed the following results: Tories, 392; Laborites, 150; Liberals, 39; others, 9. Only twenty-five more constituencies are to be heard from. So overwhelming was the Tory victory that the Labor government of Premier Ramsay MacDonald is expected to resign immediately. Stanley Baldwin, leader of the Tory party, is picked as the next premier.

REFUSES TO HALT INCOME TAX PUBLICITY

CLEVELAND, Oct. 30.—Holding that no property rights were involved and that returns of income taxes are the property of the United States to be disclosed or not as Congress in its discretion may determine, Federal Judge D. C. Westenhaver this afternoon refused an injunction to J. W. Reavis, who had asked that Collector of Internal Revenue Carl F. Routzahn be enjoined from disclosing the amount of income tax paid by him.

RECOVER DIAMONDS

LOS ANGELES, Oct. 30.—Diamonds valued at \$14,000, stolen from the home of J. J. Vosberg, were returned to their owner today after the alleged confession of Herman Harper, 20, Vosberg's chauffeur, that he had stolen the gems and secreted them in the home of a friend.

GRID STAR'S RECORD IS CHECKED

U. S. C. Player Protested as Ineligible; on Santa Ana High Minutes 'Paid'

LOS ANGELES, Oct. 30.—Photographic copies of minutes of a meeting of the Santa Ana high school student body, showing that Bill Cole, University of Southern California football player, protested as ineligible for California, received \$200 for his activities at Berkeley today, according to word here from Santa Ana.

TORIES GAIN SEATS IN ENGLAND

LONDON, Oct. 30.—Tory gains continued to mount up as more than half of the 615 constituencies reported shortly after noon today. At that time the Tories had won 195 seats, Labor 85, Liberals 30 and others 9.

Mate of Woman Found Dead In Mine, Suicide

BELVIDERE, Ill., Oct. 30.—Frank Thomas, railroad worker, held in jail here as a material witness in the murder of his wife, Grace, whose nude body was found in an abandoned mine shaft near here, committed suicide in his cell here some time during the night by hanging himself to a bar of his cell. He was found dead today.

70,000 Victims Listed In Ukraine Massacre

LONDON, Oct. 30.—The following dispatch was received from Sofia: "The newspaper Pravda of Moscow is quoted as authority for the statement there have been 70,000 anti-semitic massacres in the Ukraine during the last year, was won today by Twelve Pointer Bachelor's Fort ran second and Verdict third.

MURDER MYSTERY

LOS ANGELES, Oct. 30.—Police here today confessed they were completely baffled by the finding of a man's body with a silk cord around the neck in a city park. The man had been murdered, police said. Efforts to identify the body were fruitless.

LATEST NEWS

STORM WILL NOT REACH SOUTHLAND

LOS ANGELES, Oct. 30.—A storm in the north has turned inland and will not extend to Southern California, supplying more rain as was promised, weather bureau officials said here today. The remainder of the week will be fair.

TORIES GAIN SEATS IN ENGLAND

LONDON, Oct. 30.—Tory gains continued to mount up as more than half of the 615 constituencies reported shortly after noon today. At that time the Tories had won 195 seats, Labor 85, Liberals 30 and others 9.

Mate of Woman Found Dead In Mine, Suicide

BELVIDERE, Ill., Oct. 30.—Frank Thomas, railroad worker, held in jail here as a material witness in the murder of his wife, Grace, whose nude body was found in an abandoned mine shaft near here, committed suicide in his cell here some time during the night by hanging himself to a bar of his cell. He was found dead today.

70,000 Victims Listed In Ukraine Massacre

LONDON, Oct. 30.—The following dispatch was received from Sofia: "The newspaper Pravda of Moscow is quoted as authority for the statement there have been 70,000 anti-semitic massacres in the Ukraine during the last year, was won today by Twelve Pointer Bachelor's Fort ran second and Verdict third.

MURDER MYSTERY

LOS ANGELES, Oct. 30.—Police here today confessed they were completely baffled by the finding of a man's body with a silk cord around the neck in a city park. The man had been murdered, police said. Efforts to identify the body were fruitless.

LATEST NEWS

STORM WILL NOT REACH SOUTHLAND

LOS ANGELES, Oct. 30.—A storm in the north has turned inland and will not extend to Southern California, supplying more rain as was promised, weather bureau officials said here today. The remainder of the week will be fair.

TORIES CAPTURE MORE THAN 400 SEATS

CLAIMS ISSUE IS BEING BEFOGGED

Arguments Foreign to Civic Center Project Given, Says J. R. Grey

Editor The Evening News: Many matters have been injected into the discussion of the civic center that are foreign to the subject, and it may be assumed that this has been done to befog the real issues.

The cost of the civic center property need not be taken into serious consideration for the reason that the property now belongs to the taxpayers, and therefore the proceeds are merely taken from one fund and put into another; and, second, that the sale of the present city hall and fire station would improve the Harvard high school buildings for every possible city use for 50 years to come, beautify the grounds and leave a substantial balance.

The rental now paid by the city for space in fire-traps, where valuable city records are kept in closets and bathrooms, is more than equal to the interest on \$50,000; and the demands for additional space are increasing. Naturally the owners of the buildings now rented to the city are opposing the civic center idea, and one might reasonably inquire if this is a proper civic spirit. With the growth of Glendale, expected by us all, the cost of rented space will soon exceed the interest on all the bonds mentioned in this transaction. What will we have for that expenditure?

Look Into Future
Opponents of the proposed civic center suggest that an office building be erected on the front of the present city hall site. Will we be satisfied with a plain bare office building for our future civic center—the spot about which all our municipal and civic activities must center?

I am sure there are many citizens with sufficient vision to look forward a few years. There surely is some sentiment in this matter. But view it as a cold blooded business proposition, laying aside the factor of its central location, the possibilities of a beautiful and useful central park, the Harvard High school site will increase in value so as to make it a wonderful investment for the city. The increase in value would more than offset any expense or interest charge that could possibly accrue and leave a handsome profit. It is well to bear in mind now that 10 years from today a site of the same size as well located for civic purposes would cost several million dollars.

Injecting the school question into the discussion of the civic center project is foreign to the issue. The school question must be settled separately and aside from the civic proposition, and will come up to the taxpayers in due course, the difference being that the school district will have a substantial sum from the sale of the Harvard high property and will require less in the way of bonds. All fair minded and well posted taxpayers know this to be true. It is well to remember that you are not voting on the matter of a high school east or northwest, but solely on the question of obtaining a civic center, of which we may be proud and embracing an opportunity that will never again be offered.

On Annexation
Some say that annexation to Los Angeles is inevitable and that we will not need a civic center. Opponents of the annexation give sentiment as their reason—they want to preserve our identity, they say. What will be a more certain method of preserving the Glendale community spirit than this useful spot in the center of the city. If we are building Glendale cold-bloodedly as a strictly business proposition and eliminating all sentiment and pride in these numerous places we can begin to cut, and we can cover the present city hall site with cheap concrete structures that will answer all requirements. But will that be in keeping with the Glendale spirit, and with the plans upon which the city has been built until it is one of the most attractive in all of California?

The taxpayers league investigated the matter of bond issues and taxes before the recent election and advised taxpayers to vote for the civic center as a good proposition. It also advised voting against the others, as the needs they were supposed to supply could be taken care of out of the general fund. Since the recent bond election and further discussion of the civic center proposal, the taxpayers league has not changed its attitude on the matter and now advises all taxpayers to vote "yes" on the question.

Two Propositions
Taxpayers must not be confused by those seeking to becloud the issue. The question is "Do we want a civic center—one that can be made not only beautiful and attractive and of which we can be proud—and which will be the hub of our community activities?" It is not a matter of taxes at all—the rapid increase in valuation and future adjustments will more than absorb the increased taxes to say nothing of the increase in the value of the property acquired.

Bear in mind, also, that to win the civic center it is necessary to vote "yes" on both of the propositions on the ballot. Keep your eye on the civic center question and do not be fooled by the injection of other matters into the discussion. The school question will come up to the taxpayers in the regular way in the near future, whether or not the Harvard high school site is taken over by the city.

Preserve and perpetuate the progressive spirit of our city by

Scores Hit

JOSEPH McMANUS, whose work in "Turn to the Right," the play being presented by the Dobinson Players at the Tuesday afternoon clubhouse theatre, is a clever bit of dramatic art.



"Turn to the Right," the comedy which the Dobinson Players are producing this week, has a cast of such excellence and was put on so splendidly that delighted audiences congratulated Mrs. Dobinson in sincerity as they left the playhouse last evening. This play, written by Winchell Smith and John E. Hazzard, has thrilled millions of people with its masterly handling of Mr. Stephens in his early twenties, and has already played for two years with Walter Hampden in New York, where critics proclaimed for him an assured future.

Joseph McManus, as Mugs, and Carroll Nye as Gilly, the two prison pals of Joe, whose only desire is to help out, are characters so well done that the audience cannot get enough of their stage presence, and, as a tonic for jaded people, these two fill the bill completely. Mr. McManus played the leading character in this comedy in New York where he is well known for his clever work. Richard Ehlers as Sam Martin, the country store boy with ideas of what a real salesman can do in a big city, is well worth seeing, and is drawn in a perfect characterization.

William H. Stephens as Joe Bascom, the boy who leaves home to make good and meets with trouble, and a prison sentence, is masterfully handled. Mr. Stephens is in his early twenties, and has already played for two years with Walter Hampden in New York, where critics proclaimed for him an assured future.

William Chapman as Deacon Tillinger, the hypocrite, is splendidly portrayed, as he was the original of this character in its first production. Mary Isabelle Alpaugh, Thyra Ruhland and Marie Grey as the sweethearts of the boys, are very charming. Harry Glazier as the pawnbroker Pearce, who directed the production, has scored again for his craftsmanship.

Many people of prominence from outlying districts were present last night, among whom were Carl Gantvoort, Mrs. Higby, Grace Kingsley, Sidney Bracy and party, Landers Stevens and party, and Mr. Millais. Many beautiful floral tributes were passed over the footlights, and, at the end of the second act, the stage was a mass of flowers.

CABIN SITE LOTS IN FRAZIER PARK

Autumn Turns Hills Resort Into Wonderland Reports Subdivider Myers

With the autumn turning Frazier Mountain park into a wonderland of natural beauty, seekers after cabin sites in this development section are flocking to the park over week-ends in greater numbers, and numbers of them are signing purchase contracts, according to reports brought back by L. H. Myers, treasurer of the Frazier Mountain Park and Fisheries Co., Inc., 108 West Broadway.

"There never was, anywhere," he said, "such a riot of colors as is seen all over the park, as the autumn colorings show on the trees and leaves float down to make a carpet for the meadows and hillsides that rim the park. Down here, where the early morning fogs are found sometimes at this period of the year, people cannot realize what it is like at the elevation of the park, but up there we never have a sign of fog, and the nights, while cool and snappy, permit restful sleep, and the days are warm and comfortable."

Lots Going Quickly
One of the recent purchasers of two lots at Frazier Mountain park had his architect and contractor on the ground planning for the erection of a rock cabin with a large garage, and other purchasers also are preparing to build on their cabin sites.

Lots are going quickly, Mr. Myers said, and no argument is being made for the purchase of those who visit the park.

FEW FACTS ABOUT PUBLIC LIBRARY

T. W. Preston Writes Evening News Explaining Status Of Information Shop

Editor The Evening News—A circular signed by the "Glendale Advancement association," was distributed a day or two before the bond election of September 30th, last. It contained, in part, the following statement: "This proposition recklessly disposes of present city property. The dismantling and sale of the Harvard street library. There is an important complication involved in the public library that many persons seem to have overlooked. This institution is partially supported by the Carnegie foundation."

Unfortunately this is, as Mark Twain said of his own "death," "greatly exaggerated." Not a penny now or has been any time given by the Carnegie Foundation for the support of the Glendale Public Library or either of its branches.

City Provided Land
The land upon which the present inadequate library building at Harvard and Kenwood streets now stands was provided by the city. The Carnegie Foundation donated \$12,000 for the erection of the building. As this amount was insufficient to complete the library, \$1,200 was taken from the library funds and used to finish the basement which contains the juvenile room, work-room, store-room, rest room and lavatories.

While a maximum of 3 mills is already by the city charter for the yearly upkeep of this institution, only eight-tenths of one mill was provided from the city tax rate of 1924-25 for this purpose.

In order to provide some reasonable library facilities for the northwest section of Glendale some \$2,500 has been taken from this year's budget allowance of the main library and the so-called "branch" in a store-room of the Grand View school, and added to funds previously provided for the building now under construction money thus obtained will not, however, be sufficient to finish the basement. Nothing was taken from the south branch fund for this purpose.

THE LIBRARY BOARD,
By T. W. Preston, President.

STATEMENT ABOUT SCHOOL RECALLED

Question of Morals Brought Up by J. H. Phillips In Campaign Issue

Editor The Evening News—As a taxpayer and citizen, I am curious to know the reasons for the change of front by certain citizens. When the Broadway High school site was under discussion, several outside citizens, prominent among them C. W. Ingledue, said that "the high school should be moved further from the business section of the city to improve the environment and morale of the students. Now, in order to defeat the civic center plan these same men are willing to have the school children remain in "such close proximity to the business district."

Has the demoralizing influence of the business district decreased, or has the matter of leasing space to the city for offices had anything to do with this change of heart? Or, has the moral code been amended?

As a taxpayer and citizen, I am standing ready to give three cheers for the moral courage of the men who will publicly say: "I am financially interested in defeating the civic center—I have property that will be increased in value by keeping the City Hall where it is and improving the present site."

This would clear the issue materially, and save these gentlemen the trouble of presenting every reason (except the real one) for opposing the civic center plan. Put your cards on the table, face up, Mr. Ingledue, so that the voters may see them.

J. H. PHILLIPS.
Auto Horn on Rampage Arouses Neighborhood

The insistent sounding of an automobile horn from within the agency and garage of the Jesse E. Smith Co., 115 West Colorado boulevard shortly after midnight last night, aroused residents nearby and police were notified. After milling about for some time in an effort to gain entrance to the building, a patrolman vaulted a high fence and found the offending horn. Crossed wires had caused the horn to blow. The seat of the trouble removed, the neighborhood heaved a united sigh, turned over and resumed its interrupted slumbers.

India's tea crop is behind normal in growth, and a shortage is feared this year. needed to sell them, once the prospects have a chance to wander over the grounds and see for themselves the progress that has been made in the development, with two lakes already completed and another one due to be finished this week, to say nothing of the provisions that are being made for the entertainment of those who visit the park.

COMMENT by GIL A. COWAN

"Whitewash." That was the term used by an oil man over coffee cups in discussing the Doheny trial in Los Angeles. The Los Angeles millionaire is placed in the light of a patriot. And perhaps he is. It is profitable to be patriotic, if you have oil or munitions or money.

DuPonts, in maintaining great powder factories, are patriotic. Morgan, in corraling the nation's money, to a greater or lesser extent, is patriotic when he underwrites loans for this and other countries.

There is only one trouble. The average person is not in position to be a patriot other than to shoulder a gun and march when the "rah rah" boys, who are immediately epauleted at the outbreak of war, give the command. As this writer has oft-expressed himself, "Patriotism is a peculiar thing."

Ten years ago there was not a German who would not gladly "Hoch der Kaiser." And some of them haven't got over the idea yet, either. Today we have people who ably defend Doheny, et al. Even the writer feels kindly toward this man who gave the soldiers at Camp Meigs, Washington, D. C., during the war, a great swimming pool. He is patriotic and kind. Also, he is the product of a psychology that breeds a pathological patriotism. Yet, if it were not for this state of mind, in which material things control, America might not be the outstanding nation in the world. Despite professions to the contrary, the human race, if it amounts to anything, is material rather than spiritual. And it is getting more material day by day.

The presidential campaign fast draws to a close. Rudolph Spreckels, San Francisco banker, here today, makes his final appeal for La Follette.

In Los Angeles last night thousands contributed hard earned dollars in order to express their protest of things as they are. But, in the opinion of the writer, they are on the wrong trail. No candidate in the campaign has made an issue, other than to express belief that something is wrong, and it ought to be fixed.

The real crux of the whole situation lies in the election of lawmakers to our state and national legislatures who will respect the constitution, express the desire of their constituents, and see that there is firm administration of the laws by the executive branches. The ideals of this nation have disintegrated among wild ideas; the potency of official action has been subjugated by the classes, as witness the labor bloc, the farm bloc and infinitum.

It would please thinking people if President Coolidge, who is most certain of his election, would take the reins of government in hand, and, like the old-time school teacher, "call the class to order." Admittedly he is not controlled by money power; he is not playing to the gallery of labor, farm or other lobbyists. He has the opportunity, if elected, of becoming one of the greatest presidents the country has ever known by clearly expressing for the people the duties imposed upon duly elected or appointed officials.

And if handwriting on the wall is not heeded, it should be the presidential prerogative to see that insurgents, be they radicals or representatives of predatory interests, are made persona non grata.

TUCKER REVIEWS CENTER PROPOSAL

Superintendent of Recreation Tells Why Harvard High Site Is Suitable

"An ideal location for a municipal auditorium would be available to Glendale if bonds for the city's purchase of the Harvard high school grounds for a Civic Center are carried in the election next Tuesday," R. Ernest Tucker, Glendale superintendent of recreation, said today while discussing the many civic benefits that will be made possible if the city is able to buy such a large and centrally located piece of property, he continued.

"The municipal building would supply the needs of a vast number of Glendale organizations, with its ever available auditorium for social and educational projects. Municipal band and orchestra-concerts could also be given throughout the year, in the auditorium or from a bandstand erected in the center of a grass plot.

Many Advantages
"Playground needs could be well supplied, too, on this property which so many of Glendale's citizens are so eager to purchase for the community. Comfort stations could be erected and later a gymnasium for men and women. Courts for many games including basketball, tennis and croquet also would be a part of the plant, with other apparatus suitable for the children.

"The long-desired central park land would be provided, space being ample to form an attractive bit of green to beautify the city. This would be an attraction to visitors and Glendale's own citizens would soon find it useful and enjoyable in many ways. "These are a few of the benefits I hope to see brought about through the purchase of this property, without considering city administration buildings, for which the three well-constructed

SEAL ANSWERS IN WILSON ARGUMENT

Citizen Asks Glendalians to Stop Kidding Themselves On Civic Center

Editor The Evening News: I have just read an article on the front page of a daily paper under the date of October 29, entitled, "Maps and Records of City Unprotected Against Fire," in which L. H. Wilson deprecates the fact that because Glendale has outgrown her administrative buildings the engineer and building department have been forced to take quarters in a semi-frame building where the maps and records of the city are unprotected against fire.

This is perfectly true and has been true for months and Mr. Wilson has been perfectly aware of the conditions since the very day these quarters were taken and he should become so terribly wrought up over the great danger the city is running? Would you not think that he would have spoken of the matter before? I wonder if the proposition of influencing the taxpayer to vote for his pet civic center has anything to do with it?

Fire Proof Vaults Needed
But I am glad Mr. Wilson has become awakened to the great need of a fire proof building and vaults to protect Glendale's priceless maps and records, as well as the lives of the employees in these different departments and he will no doubt bend every effort to ward off supplying this need.

Now how is the best way to do? I am sure Mr. Wilson will be willing to co-operate in every way to change the present conditions in the swift and surest way. If the people of Glendale wish, this change can be made in six or eight months by building on the city's property which, by the way, is as large or larger than that on which the Hall of Records stands, where the business of Los Angeles is conducted at a very nominal cost. This building can be built in such a manner that when Glendale wishes to dispose of it for any reason, such as moving to a good civic center or going into Los Angeles, they could realize a profit on their investment and not be forced to scrap or sacrifice it.

Civic Center Plan
Mr. Wilson's plan for a civic center on the Harvard High school site will not solve this problem. For if the buildings now serving admirably for school purposes could be altered to accommodate the city's needs (which architects and efficiency men tell us can not be done) the majority of our valuable maps and records would still be menaced by fire because those old buildings are of very poor class C construction and not fire-proof by any means.

Then again even if this were not the case, can any one tell how long our property will necessarily remain in danger before the high school building can be delivered, altered and ready for occupancy? Not even Mr. Wilson, in all his earnest haste can promise anything short of one and a half or two years, because as you know, other bonds to the amount of a million or so will have to be voted to build buildings elsewhere to accommodate the pupils now being served, before this change can be executed. Let's quit kidding ourselves and use horse sense and do the thing we ought in all reason to have done long ago.

(Signed) GEORGE H. SEAL.
GAS RANGE SHOP TEACHES COOKING

Culinary Art Demonstrated By Expert Cook at Coker And Taylor Store

Glendale women attending cooking school classes held Wednesday and Friday afternoons at 2 o'clock at the Coker and Taylor store, 209 South Brand boulevard, are renewing their interest in culinary art, as demonstrated by Mrs. Veta Olmstead Hamilton.

Mrs. Hamilton met the classes for the first time yesterday. She came to Glendale highly recommended as to training and experience. A graduate of the home economics department of the Kansas State college, she holds bachelor of science degree.

Chance for Range
Mrs. Hamilton at one time managed a cafeteria in Salt Lake City, and during the past year has been demonstrator for the General Sales Co., Pacific coast distributors for the Direct Action Gas range.

Glendale women attending the Coker and Taylor classes will get a chance to win a semi-enamel Lorain controlled Direct Action Gas range, to be awarded the Wednesday before Thanksgiving day on which day a Thanksgiving dinner will be prepared by Mrs. Hamilton.

Illinois Oat Crops Reach 135,100,000 Bushels
SPRINGFIELD, ILL., Oct. 30.—Illinois produced 160,516,000 bushels of oats this year, as compared with 135,100,000 in 1923. The white potato yield total—12,584,000 bushels, or nearly 3,000,000 above the average, while the sweet potato crop amounted to 880,000 bushels.

PENDROY'S BRAND AT HARVARD

THE SONG WRITER MADE A MISTAKE when he wrote that song—"It Ain't Going to Rain No More"—for it did rain—a rain that means millions to the state of California. Like many others, he made a mistake—but—you can make no mistake when you buy our special

APPRECIATION WEEK

Values—Values That Are Pleasing, Seasonable, New and Sparkling
Featuring for Friday's Selling
The Following Few from the Many We Have for You in Every Department

NEW FALL WOOLENS

54-INCH COATINGS—Coatings that are the latest, newest and best, of superior quality, in the season's most desired coat shades. Full 54 inches wide. Ask to see the new monotone block plaid coatings. They are beauties. Specially priced at, per yard..... **\$5.95**
56-INCH DRESS FLANNELS—The season's most desired dress fabrics, rich all wool dress flannels, 56 inches wide, in shades of Lanvin Green, Nickel Grey, New Rose, Poudre Blue, Black and White. Specially priced at, per yard **\$3.49**
Dress Goods Department—Main Floor

More New Late AUTUMN HATS \$7.50

Added To Our Big Lot At Charming—And Specially Priced!
A wonderful combination! Think of it. Good-looking late Autumn models at a very low price! Specially purchased for a month-end feature.
Dress, semi-dress, tailored and sports models for matron or miss, developed in Lyons velvet (U. S. A.) genuine fur felt, hatter's plush, etc. Adorned with burnt peacock, ostrich, novelty pins, etc. In black, navy, brown, pheasant, rust, blue, etc.
Millinery Section—Second Floor

BEACON BATH ROBES

Another Shipment of Those Fine, Warm
For Women—Regular \$7.50 Values—A Big Friday Special
A special purchase of new tailored Beacon Robes in pretty plaid patterns, figured designs and quite mannish types. A full range of sizes from 36 to 44—every garment cut generously full—warm and serviceable. Specially priced for Friday selling **\$4.95**

CLEVER COAT SWEATERS

Clever Coat Sweaters of fine quality brushed wool, in coat style—belted or without—a sweater to meet all requirements. Some plain, others Rayon silk trimmed and single breasted effects, in shades of green, gold, white, brown, poudre blue, tan and color combinations. Full range sizes from 36 to 44. Specially priced at..... **\$12.95**
Sportswear Section—Second Floor

KNITTED HUG-ME-TIGHTS

Hug-me-tight, the cozy-comfy garment. Easy to slip on and off. A very comfortable garment for these cool evenings and mornings. Quiet shades of lavender and black. All sizes. Specially priced..... **\$3.95**
Knit Wear Section—Second Floor

STAMPED BED SPREADS

Royal Society Stamped Bed Spreads, stamped on a good quality unbleached sheeting, stamped in assorted designs. Very very special for Friday and Saturday only, choice..... **\$1.50**
Art Department—Main Floor

EMBROIDERED VEST LENGTHS

Beautiful fine heavy weight Jersey Silk—embroidered fronts—full lengths, in shades of pink, orchid, maize and white. Vest lengths of regular \$1.50 to \$1.65 values. Very special at..... **98c**
Silk Department—Main Floor

FULL FASHIONED CHIFFON HOSE

A value of values. Beautiful pure thread silk hose—chiffon weight—full-fashioned—all sizes in the most desired and stylish fall colors. The best \$2.00 hose on the market. Very special, pair **\$1.50**
Hosiery Department—Main Floor

GROWTH OF GLENDALE

SHOWN IN POPULATION

Total of 1910 was.....	2,742
For year 1920 was.....	13,850
Per cent increase.....	893
Today, more than.....	50,000

PROGRESS OF GLENDALE

AS TOLD BY BUILDING

Total for year 1921.....	\$ 5,009,201
Total for year 1922.....	6,505,971
Total for year 1923.....	10,047,601
Total for 1924 to date	8,639,316

PLEA IS MADE TO PROTECT FISHERY

Public Asked To Vote 'Yes' On Klamath River Initiative Measure No. 11

Voters "yes" on the Klamath river fish and game district initiative measure No. 11, on the November ballot, is the joint plea of the California Conservation League and the Fish and Game Commission, to save the great salmon and trout stream for the masses, as against a favored few who would monopolize the lower Klamath river for hydro-electric power development.

To kill the measure and keep the river in its natural state, a "yes" vote is required, explained F. M. Newbert, president of the California Fish and Game Commission. If the people of the state vote "yes" on the initiative measure No. 11, in the same enthusiastic spirit that put this measure on the November 4 ballot, he feels certain they will have saved themselves a future power-site conceded to be worth over \$100,000,000, and which, he declares, the Electro-Metals Co. seeks to obtain for nothing.

Last of State Salmon "What the people do, they can undo," said Mr. Newbert, in outlining the stand of the California Fish and Game Commission on the measure. "If in later years the public interest should call for abandoning fish conservation on the Klamath river and developing power possibilities there, it can be done, but there is at present enough hydro-electric power available elsewhere to serve the state for thirty years."

"Why, then, sacrifice the Klamath until necessary? It carries the last great run of salmon and sea-going Rainbow trout left in California. Always a steady, dependable source of spawn, the Klamath has now become an essential reservoir for re-stocking other streams and lakes in the state."

Power Not Needed Yet "We have seen 17,000 miles of the best spawning ground for salmon and trout destroyed, realizing that hydro-electric power and irrigation are necessary to make California the state it is and is to be—but the Klamath is not needed yet, not for a generation."

"We asked the Electro-Metals trust to do their experimental demonstration on the existing Copco dam, far up the river. They refused. We then asked them to put up bond that if proved unable to preserve fish life, the state should be authorized to remove the proposed dams from the Klamath river. Again they refused. So now we ask all voters who believe in fair play, and who are in sympathy with the efforts being made to preserve California's great natural game and fish resources, to vote 'yes' on initiative measure No. 11 on November 4—and save the Klamath river as California's greatest salmon and trout spawning stream."

One great insurance company's tables showed an increase from two per cent to three in alcoholism deaths in 1923 over 1922.

Schools Unite In Plea To Aid Legion Election

County and city school organizations of the state have joined with the American Legion in an effort to defeat Proposition No. 5 on the November 4 ballot, according to Richardson D. White, superintendent of city schools, who urges all Glendale voters to help the ex-service man by voting "no" on the measure. He said: "Proposition No. 5 was drawn by the executive committee of the county and city school superintendents, in order to save interest on school warrants, but in preparing the proposed amendment the committee worked from an old draft of the section, failing to take account of another amendment to the same section, voted by the people at the 1922 election, and providing for veterans' welfare aid. The committee, by inadvertence, failed to carry over into the new amendment the constitutional provision authorizing veterans' aid, and if Proposition No. 5 should carry, all veterans' welfare measures will be seriously affected and perhaps rendered unconstitutional."

\$400 Worth Clothing Samples Are Taken

M. M. Norton, salesman for a Los Angeles wholesale house, reported the theft of three grips from his car at 1:30 o'clock yesterday afternoon, while it was parked in front of 134 North Brand boulevard. A clerk in the store of Charles R. Walker at that address stated she saw two young men drive up in another car, take the grips and drive off. The grip contained samples of men's clothing worth \$400, Mr. Norton stated. A violin belonging to William Osterman, leader of the Sawtelle band, was stolen from his car around 9 o'clock last night while it was parked near the Glendale City Hall, Osterman reported. He was practicing with the Scouts' band at the time.

College Women To Hear Of Educational Trend

A discussion of the modern trend of education will be heard Saturday, November 8, at the luncheon meeting of the Glendale College Women's club. Dr. Walter Dexter, president of Whittier college, will be honored guest and speaker. Dr. Dexter spoke in Glendale at the first forum dinner of the Chamber of Commerce. This will be the college women's first luncheon meeting. Mrs. H. W. Schroeder will render several piano selections.

Public Speaking Class Formed at Wilson High

Class in public speaking was organized at the Wilson school Tuesday night under the extension branch of the University of California, Southern Branch, with twelve students enrolled. Prof. C. A. Marsh, of the university is in charge. The course will extend over seven weeks with meetings each Tuesday night from 7 to 9 o'clock.

INSTALLATION STAGED BY SCIOTS

R. E. Johnston Now Toparch Of Glendale Pyramid; Have Ceremony

The 1923-1924 year of Glendale Pyramid No. 39, Ancient Egyptian Order of Sciots was brought to a close last night through the installation of R. E. Johnston as toparch and his corps of overseers. Toparch Harry M. Bennett, after music led by D. Ripley Jackson, reviewed the past year's achievements of the pyramid. Two selections were given by Miss Clara Payne, soprano soloist of Hollywood. Miss Eleanore Marek, seven year old daughter of George Marek appeared in two dance selections.

Promptly at 9 o'clock Ralph Wolfe, master-of-ceremonies, formed the elective and appointive officers in grand procession and marched them to the east and then to their seats awaiting their call. The installation service was intermingled with further entertainment in the form of song and dance.

Sylvian Bell, granddaughter of an ancient Mormon who accompanied Brigham Young and Joseph Smith to Salt Lake in 1848, rendered one of her own compositions. Miss Marek and her dancing partner, Adrine McDode, nine years old, presented the Raggedy Ann and Raggedy Andy dance. Keamoku A. Louis sang several numbers.

Jewel Presented After the installation of officers, Norman G. Davidson, pyramid orator, presented the passing toparch, Harry M. Bennett, with a life membership certificate and a past toparch's jewel. Mr. Bennett reviewed some of the happenings of the pyramid during the past year, thanked the officers and all members of the pyramid for their faithful work and earnestness throughout the Scioto year. Senior Past Toparch Arthur H. Dibbern, spoke to some length on band matters and advised that it was the unanimous decision of the band that they do not go to Redding and compete for the cup this year. Toparch Johnston presented the possibilities for the coming year and outlined the work. After the program lunch was served by William L. Finkbeiner. The Scioto

Ramon Navarro Heads Cast In Gateway Film

Ramon Navarro has achieved another personal triumph in his new picture, "The Red Lily," the Metro-Goldwyn-Mayer production, directed by Fred Niblo, which is playing at the Gateway theatre today, Friday and Saturday. The audience will greet America's new screen idol in his new role with every sign of approval and delight.

In this picture Navarro plays the part of Jean Leonnee, a wealthy son disinherited by his father and cast into the underworld of Paris where in the course of time he turns thief. In such a role Navarro is at his best. He appears first in the luxurious surroundings of a palatial home located in a Brittany village, where he has fallen in love with Marise, the daughter of a shoemaker, played with infinite charm and appeal by Enid Bennett. It is this innocent love affair which leads to the eviction of the couple from the town by Jean's infuriated father.

Women's Tennis Class Plan Future Activity

Members of the tennis section of the Women's Athletic club met at the McPherson court, on Kenneth road yesterday morning from 9 to 1 o'clock. Seven members were present. Next Wednesday morning members will meet at the same place, and after the lesson will motor to Brookside park, Pasadena, for picnic lunch and business meeting. It is planned to secure a permanent tennis instructor. Later tennis will be played on the park court. Social meetings are planned once a month. Swimming section meets tomorrow morning at 10 o'clock at the Pasadena Y. W. C. A.

ship is headed up stream and all hands at work.

List of Officers The following officers were installed last night: Robert E. Johnston, toparch; Guy F. Briggs, Mobil; A. J. Lockwood, Armeses; George G. Howard, pastophori; George H. Thomas, scribe; Arthur W. Hutchinson, chancellor; Orville T. Register, trustee; Newton Van Why, trustee; Willard E. Husander, maza; Henry Schumacher, chief-of-the-me; Albert E. Sullivan, sub-chief-of-the-me; E. W. Manning, klascher; S. Riley Lyons, neokori; William Baker, proclamaror; Val W. Krenzer, marshal; William J. Royle, captain of guard; Ralph W. Browne, mohar; J. E. Noble, auditor; George T. Harness, auditor; Don Wald H. Packer, auditor.

Organ Recital Tonight Lists Classic Numbers

Organ recital program under the auspices of the Southern California Chapter of the American Guild of Organists scheduled for tonight at 8 o'clock, at Glendale Presbyterian church follows: "Allegro vivace from Fifth Symphony"—C. M. Widor, "Canon"—Jadassohn, "Evening Song"—E. C. Bairstow; "Marche Religieuse"—A. Guilman, by Mrs. Olla Mae Brown, organist; Mrs. Mina Wenzel, soprano will sing "Hear Ye Israel"—Elijah; "Song of Thanksgiving"—Allitsen; "I Hear a Thrush at Eve"—Cadman, Part II, "Evening Star from Tannhauser"—R. Wagner; "A Song of India"—Rimsky-Kosakoff; "From the Land of the Sky Blue Water"—Cadman, "Scherzo in F minor"—E. Douglas; "Concert Piece in B Major"—H. Parker, by Wesley Kuhnle, organist.

School Boy, 12, Hurt As Auto Hits Bicycle

Jack Sheridan of 253 West Loraine street, 12-year-old school boy, was a patient at the Glendale Sanitarium and Hospital this morning suffering from a scalp wound, received this morning when his bicycle collided with an automobile on his way to school. The boy was turning out of an alley near his home when the accident occurred. He was treated and sent home. The wound on his head is not serious.

Wages of American seamen are practically double those of any other country.

COUNCIL SETS BILLBOARD POLICIES

Full Authority Is Taken Away From Glendale Planning Body

City Council in meeting today sprang a surprise on the City Planning commission when it was voted to virtually take away from the Planning commission full authority in the matter of billboard licenses and regulations.

Council instructed the city attorney to amend the billboard ordinance, as it now stands, to read: "Twenty-five cents license fee per square foot, per year be charged for every billboard erected within the city limits. "Permits for such boards to be issued on payment of \$2 each from the company erecting them and the number of said permit placed on the board. "Planning commission will pass on location of all billboards erected with the approval of the council."

Prior to this action of the council a flat fee of \$100 had been charged by the city for each billboard erected within the city limits.

News Want Ads Bring Results.

Mules Ain't Goin' Worry Acacia Avenue No More

The controversy that has waged for some time over the presence of mules on East Acacia avenue was believed ended today with the announcement that Peter Ferry, contractor, and owner of the mules, has purchased five acres of land in the industrial belt along the Southern Pacific railroad tracks at 101 North San Fernando road.

Mr. Ferry is moving his mules from the corral at 614 East Acacia avenue to the new location and corrals and hay sheds are being built. Mr. Ferry has completed arrangements for the construction of 1200 feet of spur track on his land in order that he may receive and ship contracting supplies direct and with the minimum amount of handling.

The removal of the mules from the East Acacia avenue location will increase property values in that section, in the opinion of residents who have objected to the corral.

Christian Circle Club Holds Meeting Tonight

Christian Circle club will open the winter series of meetings tonight, at the First Methodist church, corner of Wilson avenue and Kenwood street. Dinner will be served at 5:45 o'clock. Election of officers, business meeting and the Bible lesson will be held. Mrs. Maude Soper, will be in charge of the Bible class. Dinner will be served every Thursday night at 5:45 o'clock at the church to high school and business women.

CIVIC CENTER VOTE IS URGED

W. L. Truitt, W. A. Horn, G. Braden, Mrs. Hutchinson Speak at Meeting

Facts and figures concerning the civic center project given by W. L. Truitt and a stirring address by George Braden, nationally known authority on the planning of civic centers and a representative of the National Playground and Recreation association of America, were outstanding features of a booster meeting held at the Harvard high school auditorium last night. The meeting was under the auspices of the civic center campaign committee which is leading the drive for the civic center bonds to be voted on November 4. Appeals for the passage of the bonds were also made in addresses by W. A. Horn and Mrs. C. E. Hutchinson, representing Glendale women.

Mr. Braden, who recently returned from the national recreation congress at Atlantic City, took as his topic, "The City and its Rightful Destiny." He stressed the point that in the life of the growing city there must be helpful influences toward the up-

(Turn to page 6, col. 4)

DOES \$6500 Mean Anything to You

OFFICERS and DIRECTORS

- MARVIN SMITH, President
Real Estate Subdivider
Investor, Mortgages and Trust Deeds
- A. G. SMITH, Vice President
Builder, Extensive Property Owner, Apartment and Hotel Operator
- GEORGE FARMER
Secretary and Treasurer
Cashier Glendale State Bank
- J. E. BARNEY
Barney & Shook, Realtors
Formerly connected with Watertown Co-operative Bank, Boston, Mass.
- HARRY ELLISON
Mgr. Oakmont Country Club
Formerly Fourth National Bank, St. Louis, Mo.
St. Louis Union Trust Co., St. Louis, Mo.
Mechanics American National Bank, St. Louis, Mo.
- J. ROY SIZE
Real Estate
Expert Land Appraiser
- LEN C. DAVIS
President Grand View Memorial Park and Mausoleum
- OWEN EMERY
Counsel

To many, it means freedom from money worries—financial independence. And it is easily within your reach!

It is a simple thing to start a definite system of saving—and the rapid way in which your money will grow through the magic power of compound interest will be a revelation to you. \$20 invested each month at 8% interest will become about \$6500 in 15 years.

You can purchase 2 shares of Preferred and 1 share of Common in the Gibraltar Finance Corporation for \$200, and pay only \$20 down and the balance in convenient payments. Besides receiving 8% on the Preferred, you will share in the profits of the Common, which should be even greater.

The coupon below will bring you full information. Mail it now, as every day's delay means valuable time lost.

PRICE
2 Shares of Preferred
1 Share of Common
\$200
\$20 Down
\$10 a Month
Send Your Check Today.
Why Wait?

Please send me your Folder, "A Frank Discussion of the Large Profits in the Mortgage Business"

Name

Address

G. N. 19

Gibraltar Finance Corp.

218 So. Brand Blvd. Glendale Phone Glen. 4553-J
1524 Cahuenga Ave. Hollywood Phone GRanite 3237
626 East Colorado Pasadena Phone Fair Oaks 204
211 Dudley Bldg. Santa Monica Phone 23015

HAND TO A NEIGHBOR

If you are now a subscriber for The Evening News, please cut out the accompanying subscription order and hand it to a neighbor who is not a subscriber. A subscription now for a year, six months or three months will include a copy of the Annual Development number of The Evening News, which is to be published on Friday, October 31. On January 1, 1925, the names and addresses of all bona fide subscribers will be published. The larger the list at that time, the greater the boost for Glendale. The importance of a city is often judged by the support given its daily newspaper.

CUT OUT AND MAIL TO GLENDALE EVENING NEWS

A. T. COWAN, Publisher
139 S. Brand Blvd. Phone Glen. 4000

I hereby subscribe for The Glendale Evening News for a period of months, and to continue until ordered stopped, for which I agree to pay at the rate of:

\$.....for.....months.

Name

Address

Received \$..... Phone.....

Check enclosed.....or will mail check on....., 1924

Rates: 1 year, \$5.00; 6 months, \$2.75; 3 months, \$1.40

WOULDN'T YOU LIKE TO DRIVE THIS FORD COUPE?

Here is a practically new Ford coupe that is going to deliver a lot of happy miles to the one who is fortunate enough to see it first. This car brings to its buyer all the qualities of its famous family in condition practically as good as the day it left the factory. The price is no indication of the value. Other real bargains in used Fords are awaiting thrifty buyers here.

- Terms may be arranged if desired.
- Ford Sedan—Extra Good\$350
 - Ford Touring—Good Condition\$225
 - Ford Coupe—Like New\$550
 - Buick Touring—Runs Fine\$450
 - Buick Touring—Fine Car\$700

1 2 3 4
SOUTH BRAND
DEALER **NASH** DEALER
McDANIEL MOTOR COMPANY
Phone Glen. 1678. Open Evenings and Sunday



You'll hardly believe you can buy this Fisher-Built COACH for \$1065

L. o. b. factory

Why face another winter without a closed car? Why—when you can buy a Coach like this for only \$1065:—and buy it on the easiest payment plan ever devised!

This Coach is new—it's different! It has a Fisher body—new Fisher V. V. one-piece ventilating windshield, with automatic cleaner—Duco satin finish—deep cushions—plenty of room for five—extra wide doors!

It has a wonderful L-HEAD SIX CYLINDER ENGINE with a time-tested and time-proved chassis built to endure for years.

OLDSMOBILE SIX
C. H. HUNTER
208-210 West Broadway — Open Evenings — Glendale 2373



Editorial Page

The Glendale Evening News

Published Daily Except Sunday
A. T. COWAN, Publisher and Proprietor
Office of Publication, News Building, 139 South Brand Boulevard
TELEPHONE EXCHANGE (All Departments).....GLENDALE 4000

Daily Greeting To News Readers

WE GET SO BUSY—
Hunting heretics we forget to worship God.
Damning radicals we forget to correct abuses.
Criticizing capital we forget to do a full day's work.
Finding fault with the government we forget to go to the polls.
Organizing charities we forget to be sympathetic with the miserables.
Making money we lose all joy in the spending of it.

DREARY OUTLOOK IN RUSSIA

A dreary picture of conditions in Russia is given by the Prague Tageblatt, a socialist publication. Statistics from Moscow indicate a famine that will involve fifteen or twenty million people. There is an incipient panic, peasants fleeing in hordes from their barren fields, and tales of children abandoned in the tragic exodus. Battles have been fought within the Communist party over the expediency of continuing food exports in the face of such dire need at home, and the anti-export party seems to have the upper hand. Russian dock workers rebel against loading grain ships for export.

In the face of these conditions, the fall of Premier Ramsay MacDonald in England, and the consequent failure of the British loan comes as a calamity to the Soviet government. Only the slight hope that the Labor party will receive a majority in the present election in England stands between Russia and despair.

The New York Times says, "There was never any love lost between MacDonald and the men in power in Moscow. They have reviled the British prime minister as an individual and have boasted of the treaty as a surrender extorted from British 'capitalism.' But, Russia's need of the loan that has now vanished is bitterly real. Her economic condition would be called desperate in any other country, but one that has managed to live somehow in defiance of the laws of economic gravitation, even if at a vast cost of human lives and happiness."

THE CROSS WORD PUZZLE

Cross word puzzles are pushing bridge and Mah Jongg into the discard. Addicts to the new game or sport are said to lose all sense of time, place and responsibility to family and society. They become interested almost to the point of aberration. However, the cross word puzzle epidemic is the most sensible of the ills that have afflicted those with more time than they know what to do with.

As a people, we are not noted for our discrimination in the use of words or for our full vocabularies. The English language is so rich. There are terms to express the most delicately differentiated shades of thought, and yet most of us have such limited vocabularies that we are forced to resort to slang to express our meaning.

The epidemic of cross word puzzles is one that may be a source of both profit and pleasure, for words are fascinating when we take the time to study them. This game will serve to show to many the richness of their own language, and a larger knowledge of words always tends toward an enrichment of ideas and a clearer precision of thought.

Many who make use of these puzzles for pastime will take occasion to correct errors of speech into which they have fallen, and will find a new delight in the use of the language from a fuller knowledge of its resources and its capabilities. A game or a pastime that makes use of the dictionary and the thesaurus imperative is not a waste of time. Let the cross word puzzles flourish with all the encouragement that scholars and the game-loving public can give them.

MARX ENDORSES PLAN

There are those in this country who would like to see the failure of the Dawes plan, and who pick flaws in it to serve political ends. But, Europe and the world in general will be only too happy to have the plan work out to bring about economic stability, regardless of who formulated it or who administers it.

There are none who claim that the Dawes plan is perfect, but it is agreed that nothing better has been suggested. Chancellor Marx of Germany has endorsed it in the following language: "The German people sincerely desire and are prepared to do everything in their power to accomplish enforcement of the Dawes plan, particularly as the results of the London conference have yielded a sounder and more healthy basis for resumption of normal relations between Germany and her former enemies than has any previously selected solution of the reparations problem."

The Dawes plan does not meet all the desires of Germany, naturally, nor of any other nation, but there is much reason to hope that it will be the means of restoring normal relations between countries that have been enemies for ten years.

CURBING THE CARELESS

"What we need is an auto that will stop and count ten before taking a chance, for the driver won't do it," says a wag. Deaths due to motor car accidents in the United States last year averaged nearly forty a day, a total of nearly fourteen thousand. That is the size of the army that is being annihilated by careless driving. It is needless slaughter, and the record is shameful. With the number of motor cars increasing at the rate of about 20 per cent a year, the time is not far distant when the country will be inhabited by automobiles and the people will all be dead.

There is too much persecution of the careful driver, and too much leniency with the reckless one. Discussing this situation, the Kansas City Times says, "There is no need to harass motorists, the great majority of whom are careful. But, America yet is waiting to see a genuine exhibition of severity in dealing with the few motorists who are responsible for the loss of human life."

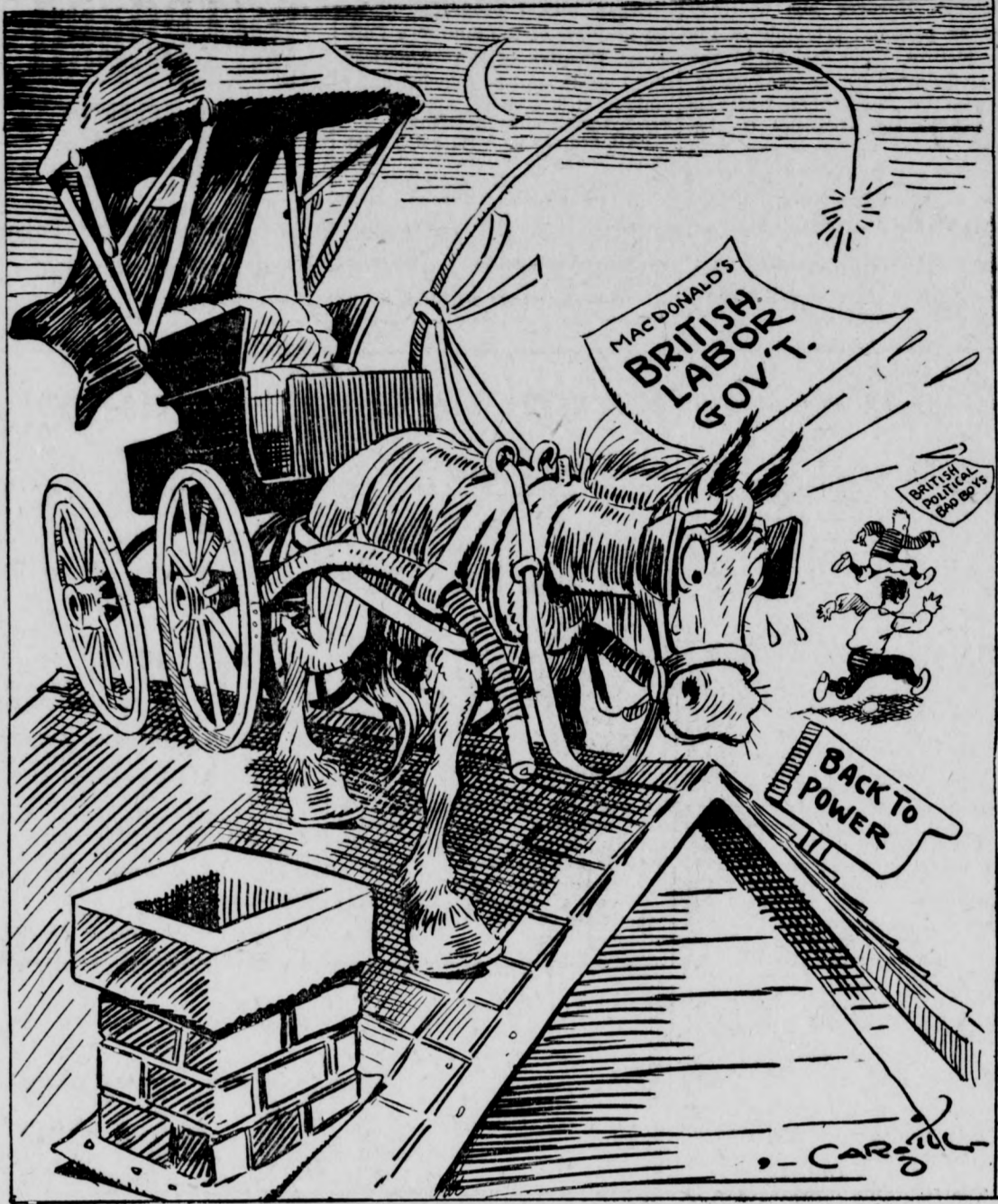
WE GET WHAT WE EXPECT

"He fares worst who fears most," it is said. We usually find what we are looking for. The Pomona Progress testifies to the truth of this adage when it states that business is about what the business men make it. A few Pomona merchants were sold on the idea that business had to be dull during the week of the Los Angeles county fair, but most of them took a broader and more sensible view of the matter, with the result that they enjoyed a better trade than usual. Anything that is good for the city is good for the merchant, even though he may not be able to see the benefit directly. It is poor policy for a merchant to oppose any movement or project because he is too shortsighted to see that favorable publicity for the city profits him as well.

Times change: In the olden days men shook hands to show that they concealed no weapons; now-days we shake hands to swap microbes.

Keep a thing seven years and you'll find use for it—there's the itch for instance.

SPEAKING OF HALLOWEEN STUNTS!



The Prince

By DR. FRANK CRANE

There were recently two significant arrivals in the United States.

One of these was a smiling, pleasant English boy who was greeted by the society people of Long Island and made much of because he was heir to the British throne.

The other was six young men who had just completed a trip around the world in an airplane. This illustrates the American and the old world point of view. The old world is inclined to honor a man because of his ancestors. The new world rather honors men because of something they have done.

These young men had just completed a trip around the world by airplane. It was a significant and record-breaking achievement, as significant in its way as the voyage of Magellan some 400 years ago. It illustrates the triumph of the internal combustion engine which is destined to work wonders in our future civilization. This engine was managed by men of courage and skill, so that the circumnavigation of the globe is destined, in the future, to be a commonplace event.

Their triumph, in its way, is parallel to Fulton's steamboat on the Hudson, Morse's trans-Atlantic cable, the steam engine and other events that marked the nineteenth century.

Their feat is another point in the history of

nations, it is another breaking down of barriers, and tends towards the realization of the world's dream, which is of unity.

There is no doubt that civilization rests upon transportation. Not only has such a railroad as the Louisville and Nashville done more than that, but trans-Atlantic liners have done more than politics in uniting the world. This trip of the airmen is significant of great strides to come.

The visit of the prince has no significance except in the social world, which is very small. Of course all American parvenus are worshippers of royalty and do their best to get at least a glimpse of his royal highness. But it is an outbreak of curiosity seekers and in no wise touches the real development of the country.

This is no disparagement of the prince, who seems to be a decent kind of boy and inclined to behave himself. But he is a nonentity, keeping himself well out of the road while British statesmen of another order manage his politics for him. He is a kindly, genial gentleman and all Americans wish him well, but his visit to this country, in comparison to the coming of the airmen, was insignificant. He has done nothing, and can do nothing. He merely prolongs the institution of monarchy by being an inoffensive gentleman.

Copyright, 1924, by McClure Newspaper Syndicate.

Making Presidents

By H. Irving King

IN 1912

The presidential election of 1912 was marked by the appearance of the Progressive party in the field and the return of the Democratic party to power. Roosevelt, back from his trip to Africa and Europe, considered President Taft had not in his administration carried out his (Roosevelt's) policies and was opposed to Taft's renomination. It had been hoped by Roosevelt's friends that when the Republican convention met in Chicago in June, Roosevelt would be its nominee. But the convention nominated Taft on the first ballot. Taft had 561 votes; Roosevelt, 107; Senator Robert M. La Follette of Wisconsin, 41; Senator Cummins of Iowa, 17; and former Governor Charles E. Hughes of New York, 2. Three hundred and forty-four Roosevelt delegates abstained from voting. Vice-President Sherman was renominated, but died the following October and was replaced by Nicholas Murray Butler of New York by the Republican National committee. The Democratic convention met in Baltimore on June 25 and nominated Woodrow Wilson, governor of New Jersey, and formerly president of Princeton university, for president, and Governor Thomas D. Marshall of Indiana for vice-president. The contest for the nomination was long and acrimonious. Forty-six ballots were taken. Champ Clark of Missouri led on the first ballot and was Wilson's chief rival. It was not until Bryan ceased to oppose Wilson's nomination that the contest ended. The Progressive party, which had come into being under the lead of Roosevelt, met in convention in Chicago in August. Roosevelt was unanimously nominated for president and Hiram W. Johnson of California, who had become prominent by reason of the San Francisco graft prosecution, was nominated for vice-president. For president and vice-president the Socialist party put in nomination Eugene V. Debs of Indiana and Emil Seidel of Wisconsin; the Prohibitionists Eugene W. Chaffin of Arizona and the Rev. Aaron S. Watkins of Ohio, and the Socialist-Labor party Arthur E. Reimer of Massachusetts and August Gillhaus of New York—who had run for president on the same ticket four years before. The popular vote was as follows: Wilson, 6,293,454; Roosevelt, 4,119,538; Taft, 3,484,980; Debs, 900,872; Chaffin, 206,275; Reimer, 28,750. Electoral votes Wilson had 435; Roosevelt, 88, and Taft, 8. Utah and Vermont were the only states carried by Taft. It will be noticed that, while the combined popular vote for Taft and Roosevelt exceeded the popular vote for Wilson by over 1,311,000, the combined Taft and Roosevelt electoral vote did not come within 339 of Wilson's. A noticeable thing in this feature is the Socialist vote. The Socialist-Labor party in 1912 polled something over 21,000 votes. In the election of 1912 the Socialist and Socialist-Labor parties combined polled over 929,000 votes.

Copyright, 1924, by The McClure Newspaper Syndicate

Smiles

IN ANY SEASON
"What makes you think Mah Jongg would never do in the army?"
"Every time anybody yelled 'Cheer' the players would all get up and run."

HEIGHT OF AMBITION
First Hobo—"Say, bo, would yer do if yer had a million or two?"
Second Hobo—"I'd buy me a freight car just fer me own private use."

8 to 11 p. m.
1:30 KJ3, 360 meters—8 to 9 p. m.
KGO, Oakland, 312 meters—1:30 to 1:45 p. m., markets, weather; 3 p. m., concert; 4 to 5:30 p. m., concert, orchestra; 6:45 to 7:15 p. m., markets, weather news; 8 p. m., concert; 10 p. m. to 1 a. m., dance orchestra.

KLX, Oakland, 509 meters—7 to 7:30 p. m., markets, weather, news.
KPO, San Francisco, 423 meters—1 to 2 p. m., Seigers Orchestra; 5:30 to 6:30 p. m., children's hour; 7 to 7:30 p. m., Seiger's Orchestra; 8 to 9 p. m., organ; 9 to 10 p. m., concert.

Northern Stations
KGV, Portland, 492 meters—5 p. m., children's program.
PPOA, Seattle, 455 meters—8:30 p. m., concert.
CFAG, Calgary, Canada, 430 meters—8 to 10 p. m., concert.

TO ILLINOIS PEOPLE
The same Wakefield's Black Berry Balsam that you and your family have used for nearly 80 years for Diarrhoea, Cholera Morbus, Cholera Infantum, etc., can be bought in every drug store in California. It is without an equal for quickly checking all loose bowel troubles.—Advertisement.

J. ARTHUR MYERS
TEACHER OF
SINGING AND CELLO
Voice Placing a Specialty.
205 S. Central
Tel. Glendale 2017-J

ELAINE TOMASO
TEACHER OF PIANO
Studio and residence teaching
Professional Accompanist
Phone Glendale 2180-W

C. E. Woodruff
Contractor and Builder
Estimates given free. Cement work and plastering a specialty.
1418 Thompson Ave. Glendale 3875-W

Dr. Marlene
Optometrist—Ophthalmologist
Reliability, Quality, Service
20 YEARS A SPECIALIST
Own Complete Optical Plant—
Phone for Appointment—Office
Glendale 2924-J, Res. Glendale 39-J
116 EAST BROADWAY

Horoscope

This is not an important day in planetary influence, according to astrology. Mars in malefic aspect dominates early in the morning, while later Saturn and the Sun are in benefic aspect.

There may be a tendency toward irritability and unreasonableness while this configuration prevails and the will should be exercised to overcome this mood. It is not a favorable rule for domestic happiness. There should be caution in avoiding entrance to a quarrel.

Military matters will be much discussed at this time and much interest in the National Guard may be awakened.

Farmers come under a favorable rule of the stars and should profit exceedingly next year.

Food prices will be high all through the winter when many luxuries will be out of reach of those long accustomed to them.

Speculation will affect many staples and there may be a scandal affecting the stock market.

The aged are subject to fairly fortunate influences today, making for invigoration of body and refreshing conditions of mind.

It is a fairly lucky day for those who seek employment and men will be more fortunate than women.

Repeatedly London astrologers foretell evil for the King of England, who may suffer a severe sorrow or disappointment.

Premier MacDonald is subject to a planetary rule making for the gravest problems and he will meet many political enemies.

Women and children in all parts of the world will be the victims of criminals and they should be safeguarded as never before during the coming winter.

Persons whose birth date it is have the augury of a pleasant year in which all interests will be satisfactory. These subjects of Scorpio should make the most of the opportunities that come to them at this time.

Children born on this day may be rash and self-willed, but clever in business affairs, ambitious and able to attain whatever is desired.

Copyright, 1924, by The McClure Newspaper Syndicate

Newspaper Ads Bring Results.

Today's Poem

TO THOSE WHO FAIL
"All honor to him who shall win the prize."
The world has cried for a thousand years;
But to him who tries, and who falls and dies,
I give great honor and glory and tears.

Give glory and honor and pitiful tears
To all who fall in their deeds sublime;
Their ghosts are many in the van of years,
They were born with Time, in advance of Time.

Oh, great is the hero who wins a name,
But greater many and many a time,
Some pale-faced fellow who dies in shame,
And lets God finish the thoughts sublime.

And great is the man who refrains from wine;
And good is the man who refrains from wine;
But the man who fails and yet still fights on,
Lo, he is the twin-born brother of mine.

—Joaquin Miller.

10 Years Ago

John Brockman is having the largest sprinkling system in the San Fernando valley installed in his gardens on Kenneth road.

Neighbors in the vicinity of the residence of Mr. and Mrs. W. J. Hibbert on South Brand boulevard have been wondering what has caused Mr. Hibbert to appear on the housetop so often lately. This morning their curiosity was satisfied, for the morning light revealed two figures on the cone of the residence. A ghost surmounts the pinnacle, while nearby a life-sized witch stands. Tonight these figures will be illuminated.

South Africa, commonly accredited with being a mining and agricultural country, has more than 7000 factories.

PHYSICIANS AND DENTISTS

Edward Swift, M. D.
Physician and Surgeon
Suite 805, Lawson Bldg.
Office Phone Glendale 2061
Residence Phone Glendale 1166-J
If no answer call Glendale 3700

DR. J. P. LUCCOCK
DENTIST
Phone Glendale 455
620 East Broadway

H. G. WESTPHAL, M.D.
Office, 205-7 Security Bldg.
Phone, Glendale, 2
Res., 337 N. Isabel
Res. Phone, Glendale 1427-V

Roy S. Lanterman, M. D.
Hours 11 a. m. to 3 p. m. Phone
Glendale 46; Residence Phone,
Glendale 2048-J-2; 233 South
Brand Blvd., Glendale, California.

Dr. Walter R. Crowell
DENTIST
Phone Glendale 2066, 111 E. Broadway
Suite 6, Central Building
GLENDALE, CALIFORNIA

DR. L. NEAL RUDY
DENTIST
822 Pacific Mutual Bldg.
Los Angeles
Telephone Met. 0767

DR. ROLAND D. FISHER
DENTIST
414 Lawson Bldg.
Glendale 3273

Phone Glendale 1000-J
Hours by Appointment
Dr. Wilbert W. Warriner
Children's Dentist
104 S. Brand Boulevard
Rm. No. 6 1st Nat'l Bank Bldg

Office Phone: Garfield 5138
Residence Phone: Glendale 212-J
Riley Russell, M.D.
Residence—Glendale
129 So. Carr Drive
Office—Eagle Hotel
Rm. 217-218 Security Bank Bldg
If not in, phone Glendale 3700

Office, Glendale 86; Res., Glendale 1
If No Response Call Glendale 3700
Dr. Raymond E. Chase
Physician and Surgeon
Hours 2 to 4 and by Appointment
310 Lawson Bldg.

DR. MERLE B. DAVIS
DENTIST
Suite 304, Security Bank Bldg.
Tel. Glendale 4561, Glendale, Calif.

DR. THEO. P. NOEHLE
DENTIST
Special Care in the Straightening
and General Care of Children's
TEETH
103-A N. Brand Blvd., at the
corner of Broadway. Over the Owl
Drug Co., Phone office Glendale
4141. Residence Glendale 794-J

HARRY V. BROWN, M. D.
Physician and Surgeon
Office 118 W. Wilson Ave. near
Brand Blvd., Ground Floor. Office
hours, 2 to 4 p. m. or by
Appointment. Residence phone,
Glendale 1165-J. Phone Glendale 1129
If no answer call Glendale 3700

DR. H. O. SCOTT
DENTIST
125 1/2 N. Brand Blvd.
Phone Glendale 4680

Physicians' Telephone and Emergency Exchange
Physicians, Nurses, Surgeons, Ambulance, Laboratories, X-Ray
Efficient Information and Service
24 hour service, direct connection with your doctor anywhere
Glendale 3700
Any doctor wishing to become a member may do so

Glendale Clinical Group

136 N. Central Ave.
DR. A. G. BOWER
Internal Medicine and
Diseases of Children
Res. Phone Glendale 2892-R
DR. A. L. MUNGER
Obstetrician and Diseases of
Women
Res. Phone Glendale 2892-R
DR. A. G. LOOMIS, Dentist
HOURS—9 A. M. TO 6 P. M., 7 TO 8 P. M.
OFFICE PHONE—Glendale 3798. If no answer, call Glendale 3700.

DR. F. W. LORING
Diseases of the Eye, Ear,
Nose and Throat
Glasses Fitted
Res. Phone Glendale 4153
DR. N. C. PAINE
Surgeon
Res. Phone Glendale 4117

Phone
Glendale 195
We Deliver!
Drug Service That Really Serves
ROBERTS & ECHOLS
"Your Home Druggists"
102 E. BROADWAY
GLENDALE, CALIF.

C. E. Woodruff
Contractor and Builder
Estimates given free. Cement work and plastering a specialty.
1418 Thompson Ave. Glendale 3875-W

Store Hours
8:30-5:30
every day

Webb's

Phone-Glen. 5200
Private Branch Exchange

Brand at Wilson

MONTH END SALES

One Day of Super Values, Friday, October 31—Read Every One—Then Come

Downstairs Store

DOMESTICS FOR OUR MONTH END SALES

Pillow Cases, 29c

These are extra heavy, without dressing. These cases are regularly 39c. 42x42 and 55x40 1/2.

Bleached Sheets, \$1.00

Size 63x90. This is a real value.

Bleached Sheets, \$1.10

72x90—81x90. Extra heavy, good quality.

Bleached Muslin, 15c yd.

A good quality—36 inches wide.

Unbleached Muslin, 15c

Heavy brown muslin in a value-giving month-end sale event.

Lonsdale Muslin Remnants, 18c yd.

These run 5 to 10-yard lengths.

Pepperill Sheeting, 45c

This is the 7-4-63-inch size.

8-4 Sheeting 50c—9-4, 50c yd.

Unbleached Sheeting 63-in. 7-4 40c yd.

8-4 45c yd., 9-4 50c yd.

10-4 55c yd.

TOWELS

Turkish Towels, 18x36

19c Each

Turkish Towels, good weight, 25c

TEA TOWELS, HEMMED 6 for 25c

Red and blue checks and stripes

TURKISH WASH CLOTHS 7 for 25c

Huck Towels, 10c each

Huck Towels, 19c

18x36—Red or blue border.

Fancy Turkish Towels 39c

Blue, pink and yellow—good for Xmas gifts.

A Clean-Up of Ladies' Handkerchiefs 25c dozen

Only a few left.

Cotton Tea Toweling 15c

Red striped—good quality.

Brown Linen Crash, 15c yd.

Bleached Linen Crash 19c

Comfort Challies 15c yd.

These come in all good patterns—large and small patterns.

Devonshire Cloth 29c yd.

These are short lengths of best Devonshires.

Jap Crepe, 25c yd.

Full line of colors.

32 in. Gingham, 21c yd.

Plain and fancy broken checks.

Windsor Crepe, 25c yd.

Fancy and plain colors.

Serpentine Crepe 29c yd.

For kimonos, etc.—good colors and patterns.

36-in. Outing Flannels 21c yd.

These come in light fancy stripes only.

This Sale will be a special sale each month on the last day and will be an event to look forward to with keen anticipation of the many good values this store will always offer—many of them specially bought for this event and others at clearance prices because of broken lots and sizes. So come Friday prepared for a big bargain fete.

Coats and Dresses Reduced for Friday MONTH END SALE—SHOP AND SAVE

SPORT COATS

From Regular Stocks—Repriced to

\$24.75



An especially attractive showing of sport coats in all the new and wanted shades of block cut polaire and kashana cloth. Favored colors are deer, dust, penny, brick and navy. The popular side fastening effect is used. Linings are unusually good. A much liked coat for motoring or for sports wear.

Month End Special..... **\$24.75**

BETTER COATS

at

\$65.00



Here is a group of higher priced coats in finest materials, choice furs and beautiful linings specially bought and moderately priced for our month end sale. Materials are ormandale, downey wool, velvone, and lustonia, and are trimmed with selected Japmink, Marmot and muskrat furs. Values are unusual at the price

for Friday..... **\$65**

DRESSES OF QUALITY—GREATLY REDUCED

Values to \$35.00

\$19.75

Values to \$35.00

Dresses of satin canton, satin crepe and charmeen, in the most liked straight-line silhouette models. A selection that will fill your needs for street or afternoon wear. Values to \$35. Specially priced Fri. **\$19.75**

Down Stairs Millinery CHOICE OF ENTIRE STOCK

Fall Hats

\$3.95

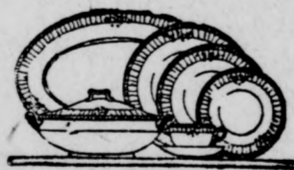
\$4.95 and \$5.95 Regularly



Absolutely the last word in voguish millinery. Especially smart and valuable velvets, satins, and satin and velvet combinations. All good colors—large and small head sizes.

MONTH END SALES IN OUR CHINA AND HOUSEHOLD DEPTS. DOWNSTAIRS STORE

Decorated Cup and Saucer 19c each Regularly 25c



Hand Decorated Cream and Sugar 49c Regular price 90c

40-Piece White Semi-Porcelain Dinnerware Set \$4.89

Consists of 6 each—7-inch plates, 5-inch plates, fruits, oat-meals, cups and saucers; 1 each—Platter, gravy bowl, oval vegetable and round vegetable.

40-Piece White and Gold Domestic Dinnerware Set \$7.50

Semi-porcelain dinnerware in same composition as above, with gold band.

3-Qt. Covered Aluminum Saucepan. Regularly \$1.00 50c

Composition Book Ends \$2.59

Artistic figures of Lincoln, Shakespeare, Byron, Longfellow, Liszt and Napoleon.

FALL GINGHAMS

32-in. Gingham—29c yd.

Plaids, broken plaids and checks, 32 ins. wide, in a very pleasing selection.

60c Imported French Gingham—49c

These are of the better grade in checks, plaids and broken plaids, made like only the French know how.

65c Madras Shirting—49c

These come in various stripes, many with fibre silk stripes, good patterns, very neat.

\$4.75 and \$4.95, hemmed or cut corners Satin Spreads—\$3.85

These good satin spreads in white only. Exceptional month-end value.

\$5.50 Hemmed or Cut Corners Satin Bedspreads—\$4.25

Another number we are making reduction on to clear at once.

\$7.50 and \$7.95 Bedspreads—\$5.75

Hemmed or cut corners. If you want a real good heavy spread, this is the one.

27-in. White "Daisy" Cloth—25c yd.

This price is way below market value. Buy Friday.

36-in. Amoskeag Outing—29c yd.

White and stripes. This well known brand at the price of ordinary outing.

ART DEPT. MONTH END SPECIALS

Finished Embroidery Models

One-Half Price Buy Now for Xmas Gifts

You'll find in the assortment combinations, Night Gowns, Bed Sets, Towels, Scarfs, Vanity Sets, Buffet Sets, Aprons, Baby Dresses and Luncheon Sets.

STAMPED ANIMALS (ready to stuff) 10c

75c Linen Buffet Sets 49c

Natural colors and easy designs.

55c Pillow Tops, 25c

These are stamped on art linen.

Another Sale of 144 Stamped House Dresses \$1.00

These are a very clever assortment of very new designs in those wonderful stamped dresses in these colors—white, blue, lavender, rose and yellow.

DOWN STAIRS STORE Ladies' Outing Gowns, \$1.19

In pink or blue striped and plain white, made with double yoke front and back. Regular sizes.

Clean-up of Percale Bungalow Aprons, 79c

We have a small lot of these for quick clearance—organdy trimmed, all sizes.

KNIT UNDERWEAR Month End Sales

Women's Union Suits, \$1.35

Medium weight fleeced cotton union suits, Dutch neck, elbow sleeve, knee length and no sleeves—built up or bodice top and knee length. All sizes in both styles.

Children's Waist Union Suits, 75c

This is a broken line of 125 Children's Waist Union Suits in 2 weights. Dutch neck, elbow length sleeves and knee length.

MONTH END HOSIERY SPECIALS

Pure Silk Hosiery, \$1.29

Regular \$1.65 value, pure silk to garter hem. Colors, log cabin, brown, beaver, thrush, grey, black, white. These are broken lines.

Pure Silk Striped Hose, \$1.00

Pure silk to garter hem for the school girl in cordovan, brown and black, \$1.75 value.

Month End Sale of NEW FALL SHOES

First Floor

In Our Newly Remodeled Department



Patent—Black Kid—Satin

Smart Different

This New \$12.00 to \$18.00

Fall Millinery \$10.00

Velvets, Velours, Satins and Felts

Offering a wonderful assortment of large and small head sizes—in new colors, also black.

Equally smart for street, dress and afternoon wear

Dozens of new individual modes

SILKS

\$2.50 Crepe de Chines—\$1.95

Our regular \$2.50 grade, is of the very best in good heavy quality and a full line of colors.

\$2.50 Plain and Changeable Taffetas—\$1.95

Many colors for your choosing, either plain or changeable. Best \$2.50 quality.

Genuine Lingettes—59c

You know lingette when you see the label on every piece. This is the genuine. Good colors.

MONTH END BLANKET SALES

BUY NOW AND SAVE

We Are Overstocked On Certain Numbers

\$2.50 Cotton Blankets—\$1.85

Size 54x76

These are in grey and tan with striped borders.

\$3.25 Cotton Blankets—\$2.49

Size 64x76

These are a good heavy quality.

\$3.50 Cotton Plaid Blankets—\$2.79

These are special values and you would do well to buy your winter supply.

Heavy Cotton Blankets—\$4.95

66x80. Soft nap and very fleecy. These are extra heavy.

White Stork Blankets—\$1.95

Size 72x90. These can be split for baby beds.

\$10.00 All Wool Blankets—\$7.95

Single blankets in good color plaids. Satin bound.

\$4.50 Indian Blanket Robes—\$3.49

These are very specially priced and come in different Indian patterns.

Bungalow Rugs—\$2.25

Size 30x60

\$4.75 Bungalow Rugs—\$3.25

Of finest cotton yarn, size 24x48.

Second Floor MONTH END SPECIALS

Ladies' \$5.95 Corduroy Bath Robes, \$3.95

A good combination of colors in all sizes and large sizes.

Ladies' Brushed Wool Sweaters, \$4.95

Brushed wool and fibre sweaters, extra good quality and broken sizes.

\$1.50 and \$1.75

Bungalow Aprons, 97c

Made of percale and gingham in all sizes and colors—organdy and braid trimmed.

Ladies' Boudoir Caps, 75c

Messaline silk, net, val lace and ribbon trimming.

Ladies' \$2 Combination \$1.35

Crepes and nainsook—white only—lace, embroidery and hem-stitched trimming—bodice top—36 to 44.

\$1.50 Batiste Combinations 95c

Striped batiste—honeydew and fresh—36 to 44 sizes.

Ladies' \$2.00 Black Sateen Princess Slips, \$1.29

Some have 2-inch hem, others with ruffle.

Ladies' 75c Bloomers 2 for \$1.00

Flesh color only—reinforced—medium and large sizes.

Valenciennes, Laces and Insertions, 5c yd.

1/2 to 1 inch wide—8c value.

Lace Yokes, 45c

Made of Valenciennes laces and Cluny insertions combined, with ribbon beading tops, for camisoles, teddies and night gowns.

STATIONERY SPECIAL

90 Sheets Linen Paper, 25c

Envelopes, 24 in pk., 10c

NOTION DEPT. Month End Specials

Stickerie Braid, 10c-15c

Value, 20c

This is just what you want for finishing outing gowns.

Leather Belts, 50c

These regularly sold at 65c and 75c.

8c J. P. Coats' Crochet Cotton, 5c

This has a silk finish.

\$3.95 Genuine Leather Purses, \$2.45

These come in pouch and envelope styles. Also a few silk ones included in this assortment.

Month End Drapery Specials

Bungalow, Tuscan and Filet Nets Priced \$1.25 to \$2.00 yd., Friday 89c yd.

These nets come 45 to 50 inches wide in colored designs; colors, ecru, cream and white.

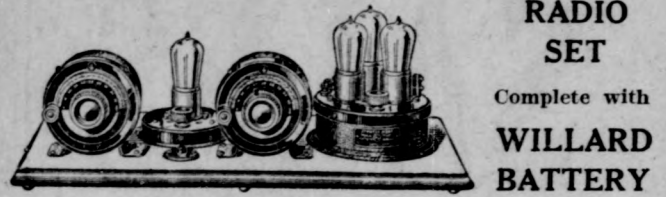
Bungalow and Tuscan Nets, 49c yd.

Formerly 65c to \$1.25 a yard—sizes 36 to 50-in. widths—colors, ecru, cream and white.

Terry Cloth, 69c yd.

Priced regularly 95c and \$1.25 a yard. Beautiful bright colors—30 to 36 inches wide—good designs—double faced.

THIS "ATWATER KENT"



RADIO SET Complete with WILLARD BATTERY

TO BE GIVEN AWAY Sat., Nov. 1st, 8:30 p. m.

to the person spelling the greatest number of words from the letters found in the words

ATWATER-KENT

Send In Your Answer—Be Here Saturday Night

SPECIAL: Uncle Remus and his Harmonica will be here to entertain you and will make the presentation to the winner.

Open Every Evening Shuck Music Co. Open Every Evening

So. Cal. Distributor Elec. Equip. Co., 1240 So. Hope, L. A.

SAVE BY BUYING 6% Preferred Stock at \$92.50 SOUTHERN CALIFORNIA GAS CO.

Power Pays \$16,000 To Oppose Legislation

SACRAMENTO, Oct. 30.—Campaign expenditures of power corporations in their fight against the state water and power act this year total in the neighborhood of \$16,000, while expenditures of proponents of the act aggregate \$35,000, according to sworn statements filed with Secretary of State Frank C. Jordan.

Finger Prints to Find Burglar of School

CORONA, Oct. 30.—Finger prints will tell the tale of the robber who burglarized the high school here. Sheriff Clem Sweetser of Riverside, took the finger prints of all the boys in school.

URGE PASSAGE OF BIG BOND ISSUE

W. L. Truitt, W. A. Horn, G. Braden, Mrs. Hutchinson Speak at Meeting

(Continued from Page 3)

building of the spiritual and moral side as well as the material, just as such influences are requisite in the life of the growing boy or girl in order that he or she may become a respectable citizen of the future. The fact that the years of progress which stand as a monument to the past decade have not witnessed a corresponding advancement in the moral and spiritual life of the citizenry, was developed by Mr. Braden. The speaker strongly urged the passage of the bonds, telling how he knew Glendale of yesteryear, a city of but 2300 persons; how he had followed its growth, and how he dreaded to see it go farther without making adequate provision for a civic center group.

"One of the big things in Glendale is that the city is suffering from growing pains. This renders the problem here even more perplexing than in other cities," Mr. Braden said. In conclusion he cited the cases of many of the large cities of the nation which failed to take advantage of proffered opportunities for civic center sites and later bought the identical or less desirable sites, for many times the same money. He urged that Glendale not make this mistake, declaring that a civic center will eventually become an absolute necessity.

Mr. Truitt set forth a group of figures and statistics in his address, the first on the evening's program. He said the plot now occupied by the Harvard high school contained thirty-four lots that figured on the basis of \$550 per front foot for the Colorado street frontage, \$320 per front foot for the Maryland avenue frontage, \$300 per front foot for the Harvard street frontage and \$250 per front foot for the frontage on Louise street, the total retail value of the land in question would be \$62,000. Beside this, the three buildings would have to be included in any complete estimate of the value of the property, he pointed out. He held the buildings in all events to be worth more than \$8,000 which would be the difference between the estimated value of the land alone and the amount asked for the whole site or the total amount of the bond issue.

Concerning the extent of available office space in the three buildings, Mr. Truitt declared the total footage of 64,529 square feet is four times that of all space now being utilized by the city clerical departments. This footage does not include the basement space which brings the figure to 75,121 square feet, he said. The present space occupied by city departments in three buildings, the present city hall, the Inglewood building and the old Tropic city hall, totals only 13,132 square feet, he said. It was further argued by Mr. Truitt that with the departments centralized in one, instead of three buildings, the work could be conducted more efficiently and economically.

The rental paid for the Inglewood office alone is \$215 monthly, Mr. Truitt said, or \$2580 per year. This is \$6.70 per square foot, which would make the Harvard school footage worth \$52,514 yearly, figured at the same rate per square foot, he argued. This amount represents more than the five per cent interest on the proposed bond issue by many thousands, the speaker declared. Placed in one building, the three Harvard school wings would make a 10 story structure the approximate size of the new Security building he said, stressing the point that they were amply large to house all the city departments.

Low Tax Rate Mr. Truitt referred to the past, declaring Glendale had allowed several sublime opportunities to slip out of her fingers when suitable civic center sites, offered at low figures, were not accepted. He also gave figures showing Glendale's tax rate for the year to be lower than that of any of twenty other Southern California cities in this vicinity. He quoted the cases of Pomona and Eagle Rock where the municipal tax rates were \$2.28 and \$1.92 respectively as compared with Glendale's rate of \$1.11 per hundred dollars. Mr. Truitt concluded his remarks with a plea for the passage of the bonds as a sound business move, predicting that, if the present proposed site is not taken, Glendale will have to pay not \$650,000 but several millions for a site in the future.

Branding those who "can't see beyond a tax bill," as the city's greatest handicap, and predicting a population for Glendale of 240,000 within a few years, Mr. Horn stirred the audience in his appeal for the bonds. Talking on the "human side" of the argument, Mrs. C. E. Hutchinson recalled the years in the past which have elapsed while Glendale lay sleeping and failed to appreciate the opportunity to acquire suitable civic center sites at various times. She characterized the Harvard high school property as the last available site, and urged strongly its purchase.

Future Welfare "Fantastically she wove a word picture of the future, when Glendale should have a public museum and art exhibit, a beautiful, pleasing and cooling central park, situated on what she declared the most admirably located piece of ground imaginable. She said she pleaded for the children, the citizens of tomorrow who will either thank or condemn their parents, according to the result of the vote on the civic center. She quoted the case of less than a week ago when, she declared, lady members of the visiting Knights Templar

NEED AUTOS FOR CARRYING VOTERS

Call Issued by Republican Club for Tuesday; List Precinct Heads

Automobiles to take voters to the polls next Tuesday are desired by the Glendale Republican club, according to an official call, which follows:

"To get every Coolidge voter in Glendale to the polls next Tuesday the Coolidge club requests the donation of the use of cars with drivers on that day. In every precinct there are persons who for some good reason will be unable to get to the polls without assistance. In a few precincts there will be a considerable number of voters who will have to travel some distance to the polls. To accommodate all such persons and insure that they will have opportunity to cast their ballots next Tuesday for Coolidge and Dawes, the services of volunteer workers is urgently needed in each precinct. All persons who will be able to respond to this call will please notify Republican headquarters at 220 South Brand boulevard, phone 4691, and get into communication at once with their precinct committeeman.

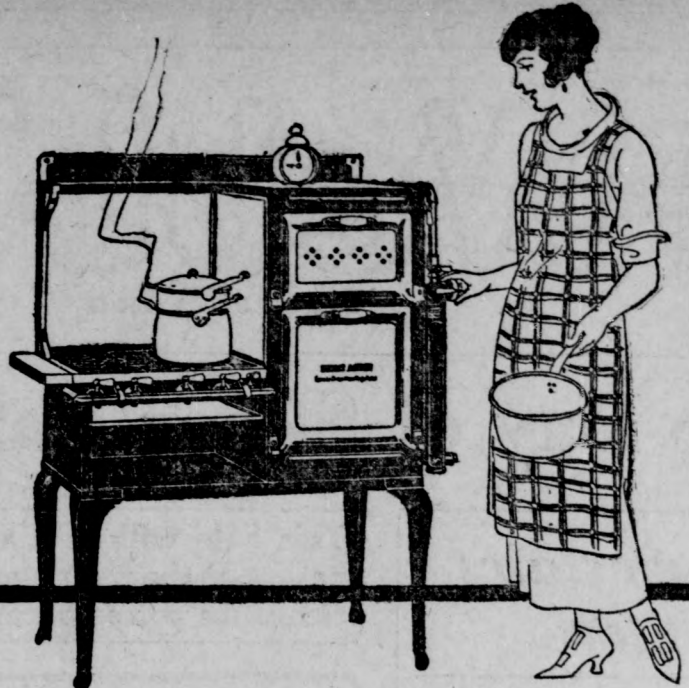
- 1.—Mr. and Mrs. H. L. Diefenbach, 1426 Western avenue, Glendale 3875-J.
2.—Mrs. W. E. Evans, 625 Cumberland drive, Glendale 4598-J.
3.—Edwin Kulp, 1234 Viola avenue, Glendale 2726-J.
4.—Walter H. Nicoles, 322 Fairview avenue, Glendale 821.
5.—Mr. Lewis, 2866 Canada boulevard.
6.—C. E. Kimlin, 306 Valjejo drive, Glendale 2498-R.
7.—Ed Radke, 720 North Howard street, Glendale 2713.
8.—Mrs. H. S. McCormack, 624 North Brand boulevard, Glendale 3590.
9.—Mrs. Lizzie S. Hayward, 307 North Kenwood street, Glendale 1948.
10.—Mrs. John Robert White, Jr., 347 North Orange avenue, Glendale 2106.
11.—M. D. Davis, 613 North Brand boulevard, Glendale 4000.
12.—Charles J. Letts, 450 West Lexington drive, Glendale 3771-J.
13.—Mr. and Mrs. J. H. Burris, 629 Pioneer drive, Glendale 3555-J; C. H. Walker, 609 Myrtle street, Glendale 1969.
14.—J. A. Endicott, 423 West Broadway, Glendale 347-W.
15.—C. F. Parker, 321 North Central avenue, Glendale 563-J.
16.—T. L. Brown, 213 North Louise street, Glendale 3194-W; R. Brissenden, 224-A North Louise street.
17.—Charles Stanley, 103 North Everett street, Glendale 1435.
18.—A. D. Looney, 206 North Verdugo road, Glendale 798-W.
19.—Sherman Trowbridge, 1234 East Broadway, Glendale 3970-J.
20.—Frank Booth, 111 South Kenwood street, Glendale 1892.
21.—W. W. Stevenson, 330 West Broadway.
22.—Mrs. Opal Greenwalt, 408 West Oak street, Glendale 1977-J.
23.—Mr. and Mrs. Grant Stewart, 515 West Elk street.
24.—Mr. and Mrs. S. C. Packer, 362 Riverdale drive, Glendale 947-W.
25.—Harry C. Levey, 511 South Glendale avenue, Glendale 615-J.
26.—J. P. McClish, 410 East Maple, Glendale 3026-M; 111 South Glendale avenue, Glendale 680.
27.—W. H. Fairall, 550 East Palmer avenue, Glendale 2021-W.
28.—Mrs. E. B. Moore, 1259 South Maryland avenue, Glendale 15-W.
29.—Mrs. Adelaide Imler, 336 West Park avenue, Glendale 1532-J.
30.—George Emerson, 129 West Eulalia avenue, Glendale 2832.
31.—Osborne Garber, 1826 South San Fernando road, Glendale 295-W.
32.—W. H. Armstrong, 353 West Lexington drive, Glendale 2580-W.
33.—Fred Goodfellow, 850 East Harvard street, Glendale 1826.
34.—J. C. Sherer, 717 South Verdugo road, Glendale 899-J; City Hall, Glendale 1300.
35.—Neil W. Andrews, 322 West Colorado street, Glendale 39-R.
36.—San Rafael—Melvin E. Cowan, 2022 Sycamore Canyon road.
37.—Casa Verdugo—H. E. Struble, 1313 North Maryland, Glendale 119-J.

Farmers of Portuguese East Africa are buying tractors, but have shown little interest in passenger cars. organizations walked the streets of the business district in search of a resting place in vain. "If it must be," she concluded, "give the civic center to Glendale avenue, but let us have a central park, centrally located in the business district, so that no longer we will be the object of criticism and laughter, as we have been in the past."

Preceding the speakers there was a musical program consisting of community singing led by J. Arthur Myers with Mrs. Urban at the piano. D. H. Smith was chairman of the meeting.

CONSTIPATION OVERCOME The use of FOLEY CATHARTIC TABLETS will bring speedy relief from constipation if taken promptly. They are purely vegetable and act on the liver. Mr. John D. McComb, Lucas Co. Home, Toledo, Ohio, writes: "Have used FOLEY CATHARTIC TABLETS in severe cases of constipation to which I am subject and found them beneficial." FOLEY CATHARTIC TABLETS are easy to take, leave no unpleasant after effects. Try them.

Glendale Pharmacy, 633 East Broadway; Hub Pharmacy, Glendale and Colorado; Acacia Pharmacy, 922 South Glendale Avenue.—Advertisement.



One easy turn of the Lorain Red Wheel gives you a choice of 44 measured and controlled oven heats for any kind of oven cooking or baking.

DIRECT ACTION GAS RANGES

Direct Action Gas Range oven linings and oven bottoms will not rust out—because there are none.

Examination of any Direct Action oven will show you there are no side flue-walls or solid oven-bottom. The upkeep of your range accordingly will be small, practically nothing, as you never have to replace rusted linings. This open construction of Direct Action ovens reduces condensation to a minimum, thus preventing the gathering of moisture to eat the body-walls.

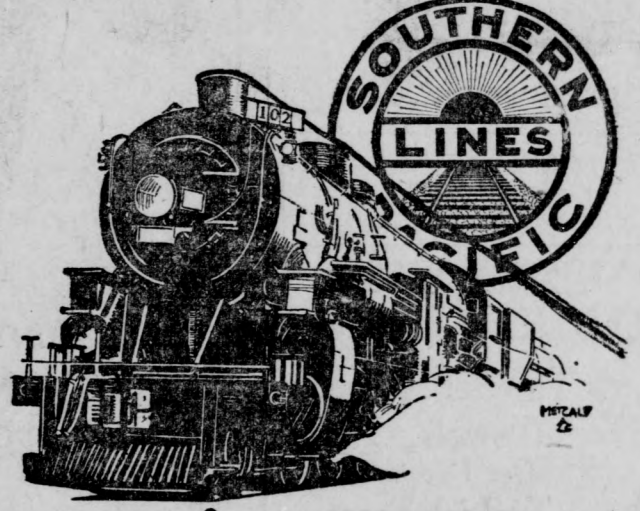
LORAIN OVEN HEAT REGULATOR

Direct Action Gas Ranges are equipped with the famous Lorain Oven Heat Regulator, a device that accurately measures and automatically controls the heat of the oven. Thus it makes possible many unusual cooking feats such as Whole Meal Oven Cooking, Lorain Oven Canning of fruits and vegetables, etc. Lorain also relieves the housewife of the constant watching of food and fire when baking and cooking.



209 So. Brand Blvd.

Phone Glendale 647



going away via the

NEW SUNSET LIMITED in daily operation

Beginning November 1—between San Francisco Los Angeles, San Diego and New Orleans

Over the charming SUNSET Route Smooth, rock-ballasted road-bed through the Scenic and Romantic Southwest. Through the orange lands of California The wondrous Apache Trail side-trip in Arizona. Connects at New Orleans with Southern Pacific palatial steamers for New York and with trains for North and East.

Make reservations now to take advantage of this new travel opportunity. Communicate with

Southern Pacific

H. L. Legrand, City Ticket Agent, 106 N. Brand. Glen. 21 C. L. Thedaker, Station Agent, Cerritos and Railway. Glen. 126

For Profitable Results Use News Want Ads

"Folks, It Was Just Sunshiny and Grand Last Sunday Up There At FRAZIER MOUNTAIN PARK"

With an Autumn tint of GOLD in the TREES. The MASTER PAINTER could not make anything more beautiful or restful to the eye. Those cabins that are buildin' just add to the picture, and with all those enthusiastic people stepping around chipper and smilin' like, you can just "BET YOUR BOTTOM DOLLAR" if you had been there you would have taken home a mental picture that would have made you feel good all week. "NOW LISTEN," here's something I want you to pay particular attention to. The way those \$125 lots are sellin' they won't last very long. Some folks were disappointed last Sunday 'cause they couldn't buy some of the \$100 cabin sites that were all sold out. Now "DON'T GO TO SLEEP AT THE SWITCH" and wake up finding all the \$125 lots sold. Get in your "Flivver" or Packard, just as it may be, and drive right 'round to TWINING & MYERS, 108 West Broadway, make a little deposit, and select your lot Sunday. If you don't own a "horseless carriage" PHONE GLENDALE 3011, we'll gladly come and take you to the office in a jiffy. There's goin' to be "LOTS OF LOTS" but remember, the price goes up with the puttin' on sale of each allotment. BUY NOW and you will have a steady-goin' investment for your HAPPINESS, HEALTH AND WEALTH, not forgettin' the wife and kiddies. Those surveyors are markin' out the lots just as fast as they can, and Pete Ferry and his outfit are as busy as bees, on puttin' in roads, trails, dams for lakes and all the nice things that will make FRAZIER MOUNTAIN PARK the FINEST RECREATION SPOT for many miles around. Jack Frost has been busy here and there, "meaning" that next Sunday there's goin' to be some wonderful carpets of colored leaves, with tons of acorns. You should see those squirrels scampering around, gathering up their Winter supply of food. It may be so foggy here in Glendale, that you couldn't see a "BAD CREDITOR crossin'" the street. But when you arrive in FRAZIER MOUNTAIN PARK you will ALWAYS FIND IT CLEAR AND SUNSHINY. With lakes No. 6 and 8 all finished and a 100,000 fish ordered. Just picture some of the pleasures of those fishin' trips. They're workin' fast on Lake No. 1. There'll be a Big Dancing Pavilion, Radio, Tennis, Croquet, Shade, Fishing, Huntin' real honest-to-goodness Fire-Places, with plenty of fire-wood, and Cool Sparkling Spring Water. Just think, all yours for \$125. You can't miss it.

WE'LL SEE YOU SATURDAY OR SUNDAY At Frazier Mountain Park

This Price Will Be Increased on Next Allotment — So GET IT NOW \$125 ON VERY DESIRABLE TERMS

Owned and Sponsored by Glendale Men A. L. BAIRD, President; W. L. TWINING, Vice-Pres.; HARRY C. MacBAIN, Sec'y; L. H. MYERS, Treasurer.

How to Get to Frazier Mountain Park Drive out through San Fernando, Newhall and Saugus to the famous Ridge Route, north of Chantlers one-half mile—less than 80 miles from Glendale or Hollywood—turn west three and one-half miles over a smooth county gravel road; follow the arrows and you are in Frazier Mountain Park

Frazier Mountain Park and Fisheries Co., Inc.

TWINING & MYERS, Selling Agents 108 West Broadway, Glendale Phone Glendale 3011



WM. McMILLAN, Vice President
Director Federal Com. & Svgs.
Bk. Real Estate & Investments.



J. I. WERNETTE, Vice President
Director Federal Com. & Svgs.
Bank. Real Estate and Invest-
ments.



PAUL E. STILLMAN, Vice Pres.
Vice Pres. Federal Com. & Svgs.
Bank. Director Federal Mort-
gage Co. Proprietor Stillman
Printing Co.



C. C. COOPER, President
Also President of Federal Com.
& Svgs. Bank and Federal Mort-
gage Co.



V. E. WHITE, Sec'y-Treasurer
Cashier Federal Com. & Svgs.
Bank. Sec'y-Treas. Federal
Mortgage Co.



B. A. MASON, Vice President
Director Federal Mortgage Co.
Attorney and Large Property
Owner



MYRTLE A. BALDWIN, Vice Pres.
Vice Pres. Federal Mortgage Co.
One of Glendale's Largest Prop-
erty Owners



H. S. WEBB, Director
Director Federal Com. & Svgs.
Bank. Proprietor H. S. Webb
& Co.



T. J. FAMBROUGH, Director
Director Federal Mortgage Co.
Contractor and Well Known In-
vestor and Builder.



NATHAN RIGDON,
Advisory Board
Director Federal Mortgage Co.
Successful Builder and Con-
tractor



DR. HARRY V. BROWN,
Advisory Board
Vice Pres. Federal Mortgage Co.
Leading Physician and Member
of Board of Education.

Announcing the Organization of The Federal Building and Finance Company

of Glendale

Offices: 144 North Brand Blvd.

Capital Stock - - - - - \$500,000.00

5000 Shares Preferred Stock at \$100 Per Share
5000 Shares Common Stock—No Par Value

A HOME COMPANY organized and managed by Glendale people to serve the home community in financing building, handling mortgages and doing a general, conservative financing business.

The Safety and Success of Any Enterprise Lies in "The Men Behind"

The Officers, Board of Directors and Advisory Board of the Company are chosen from the stockholders of the Federal Commercial & Savings Bank of Glendale, and are all men well known as property owners and financiers who have proven themselves capable, honorable and successful in whatever they have undertaken.

Opportunity for Investment

This company offers an unusual opportunity for a safe and highly profitable investment through the co-operative distribution of its common shares to all investors in preferred shares, thus giving to every investor a share in all the profits.

Shares are offered as follows:

**Units, consisting of two shares of Preferred Stock
and one share of Common Stock, for \$200.00**

Dividends of 8 per cent per annum will be paid on Preferred Stock January 1st and July 1st of each year.

Dividends on the Common Stock will be paid as earned and declared by the Board of Directors.

Units may be purchased in convenient quarterly or monthly installments if desired.

Stock subscription books are now

Wm. McMillan, Fiscal Agent

C. C. Cooper, President



A. JUD SHEPARD,
Advisory Board
Director Federal Mortgage Co.
Capitalist and Investor



L. T. ROWLEY, Advisory Board
Real Estate, School Attendance
Officer.



EDWIN D. HAMLIN,
Advisory Board
One of Glendale's Largest Sub-
dividers



LYMAN CLARK, Advisory Board
Owner Chrysler and Maxwell
Agency.



W. G. LAUDERDALE, Director
Director Federal Com. & Svgs.
Bank. Proprietor of Irish Linen
Store. Large Property Owner.



E. U. EMERY, Director
Vice Pres. Federal Com. & Svgs.
Bank. Director Federal Mtg. Co.



V. M. HOLLISTER, Director
Director Federal Com. & Svgs.
Bank. Well Known Business
Man and Part Owner of Valley
Supply Co.



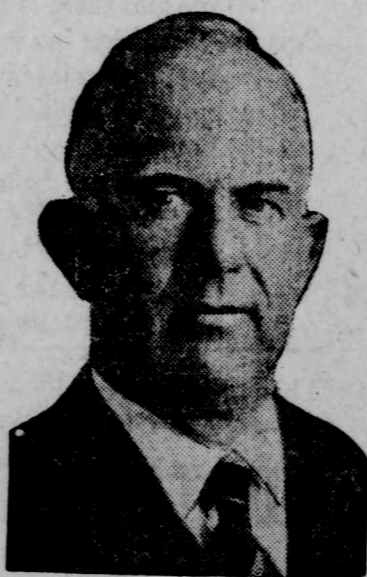
GEO. T. HARNESS, Asst. Sec'y.
Asst. Cashier Federal Com. &
Svgs. Bank. Asst. Sec'y. Fed-
eral Mortgage Co.



WALTER P. LLEWELLYN,
Asst. Treasurer
Director and Escrow Manager
Federal Com. & Svgs. Bank.
Asst. Treas. Federal Mortgage
Co.



W. A. TANNER, Advisory Board
Automobile Dealer. Part Owner
Tanner & Hall, Buick Agency.



C. C. BOWERMAN
Advisory Board
President Bowerman Lumber Co.



FRED L. SMITH, Advisory Board
Director Federal Mortgage Co.
Influential Property Owner. Re-
tired Capitalist



CHAS. W. INGLEDUE,
Advisory Board
Real Estate and Investments.
Large Property Owner.



JOHN B. TATE, Advisory Board
Director Federal Mortgage Co.
Real Estate, Investments. For-
merly Banker of Indiana.



S. PRINCE DAVIS
Advisory Board
Realtor and Capitalist

PEANUTS

Virginia Jumbos 25c
(Hot from the roaster Friday at 11 a. m., 3 p. m. and 6:30 p. m.)

Blanched and Salted Peanuts ... 25c
(We cook our own salted nuts)

Hallowe'en

Real Baby Rice Popcorn..... 20c
(Absolutely hull less)

Golden Queen Popcorn 15c

Eastern Rice (plain) 10c

NUTS AND NUT MEATS

We Have the Most Complete Stock in Southern California

Pistachio, Pine Nuts, Pecans, Finest Imported Almonds, etc. Orders for Nuts for Parties, etc., are Salted Same Day Ordered.

COFFEE

35c, 40c, 45c lb.

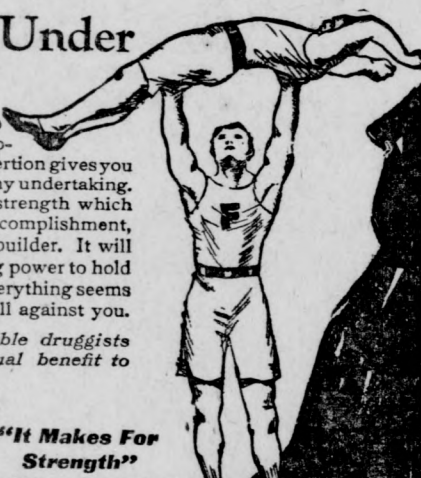
Prices Make Customers--Quality Keeps Them Remember, We Are Coffee Roasters

WILCOXON

"THE COFFEE ROASTER"
1943 S. San Fernando Road
Glendale 2888

Holding Up Under Strain

To possess the endurance to "hold out" to withstand prolonged mental or physical exertion gives you the winning advantage in any undertaking. To obtain that sustaining strength which is a requisite to successful accomplishment, take FORCE, the master builder. It will give you stamina and staying power to hold up under the strain when everything seems to be at stake and the odds all against you. FORCE is sold by reliable druggists everywhere and is of equal benefit to men, women and children.



"It Makes For Strength"

Force TONIC

The Master-Builder

POLITICAL ANNOUNCEMENT

VOTE FOR

BAIRD

For SUPERIOR COURT JUDGE

Impartial—Fair—Fearless—Type of Man We Need in the Public Service

ELECT HIM NOV. 4



WILLIAM S. BAIRD

ASKS QUESTIONS ON CIVIC CENTER

Dr. H.R. Harrower Sends List To Campaign Committee To Be Answered

Dr. Henry R. Harrower of the Harrower laboratory, 920 East Broadway, has prepared a list of questions on the civic center which he has sent to the civic center campaign committee to be answered. A copy of the questions was sent to The Glendale News and appears below:

Assessed Valuation
1. What is the present assessed valuation of Glendale city property?
2. What is the present tax rate?
3. How much will the proposed \$650,000 civic center bond increase these taxes?

New City Hall
1. Are we in immediate need of more office room for the city departments?
2. What is the status of the various city offices and where are they located?
3. What rent is being paid for space used outside of the city hall?
4. What is the general plan for the use of each of the present Harvard school buildings?

5. In case of immediate purchase, when could the city get possession of the Harvard school property?
6. How long will it take to make the necessary alterations?

Disposition of Present City Hall

1. Is it the intention to sell the present City Hall?
2. What is the estimated return expected from this?
3. What is to be done with the junked city property?
4. Is it the intention to sell other city property?

5. Is it the intention to sell other city property on Broadway, particularly the fire station on Broadway, the Harvard street library now being built in the northwest district?
6. What are the estimated amounts expected from these sales?

7. If it is true that the Harvard street library is to be sold, what would be the status of the funds invested in it by the Carnegie library fund?
8. Incidentally, how much was that fund?

9. Could the library be transferred to the civic center site?

Proposed Civic Center Site

1. What disposition is to be suggested of the present Harvard school site? Is it the intention to sell part of it for business purposes?
2. Is it intended to make a part of this into a park?
3. To install a swimming pool?
4. To build a fire station?
5. To sell the present frame school structures? If so, for how much?

Remodeling of the School Building
1. Have well-considered plans been made for the remodeling of these buildings?
2. Who were the architects?
3. What were the estimated costs?

School Needs

1. How many students attend the Harvard high school?
2. Are they all high school students?
3. Are any intermediate students studying there?
4. If so, could they be immediately placed elsewhere?

Desirability of Harvard Street Site

1. Is the Harvard school site now unsatisfactory for its purpose?
2. Have the school trustees definitely decided to sell this property?
3. If so, for what reason?
4. If so, for what price and how was this price arrived at?

5. If it is true that the school board believes that the Harvard street site is now too central and is to be sold for this reason, would there not be a similar reason for the disposal of the Wilson street site, which is quite close in?

Extended High School Facilities

1. Is it intended to build another high school in Glendale?
2. Is it necessary to sell the Harvard street site before buying another high school site?
3. Will the people have the opportunity to vote for a new school location?
4. Can the high school trustees sell property without action or vote taken by all the people in the high school district, including those in La Crescenta, Montrose, Tujunga, etc.?

5. What is the present intention regarding the establishment of a junior high school?
6. Will it cover the same district as the high school?
7. Has this been submitted to and voted on by the people, not merely in Glendale, but La Crescenta, Montrose, Tujunga and vicinity?

8. How long would it take to form a junior high school district?
9. Could additional school bonds be voted for extending high school facilities before a junior high school district was formed?
10. How much money would be required to build school facilities to take care of the children now attending the Harvard high school?

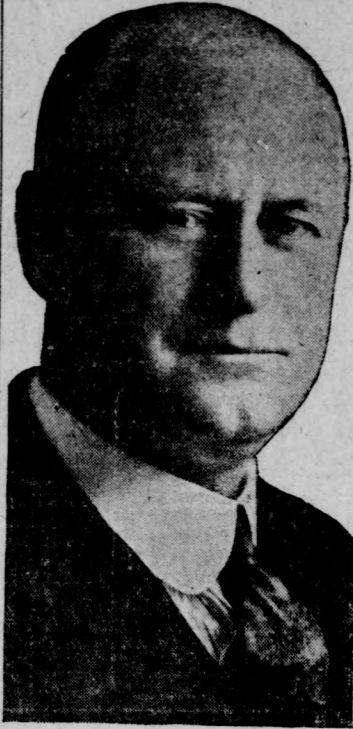
Finances

1. What is the assessed valuation of the high school district?
2. What is the amount of proposed school bond issues?
3. What is the present school tax?
4. How much would this tax be increased by these bonds?
5. If the Harvard street site and buildings are sold to the city and the people refuse to vote bonds for a new school, what would happen to those who now go to the Harvard school?
6. Is it suggested that the city buy the school and lease it to the high school board temporarily? If so, on what terms.

American apples eaten by people of Europe last year filled 4,300,000 boxes and 1,636,000 barrels when shipped there.

Heads Firm

C. C. COOPER, who is president of the Federal Building & Finance Co., a new organization in Glendale.



C. C. Cooper, president of the Federal Commercial & Savings bank, and other residents and property owners of Glendale, have formed another financial institution for the furtherance of a larger and better Glendale, known as the Federal Building & Finance Co., Mr. Cooper being president of the new company.

Mr. Cooper came to Glendale five years ago, from Nebraska, where he and others owned a line of banks and other financial institutions, all of which were very successful under his management.

Upon his arrival here he and his associates purchased the old First National bank, of which institution he became the head. He and his associates also organized the first building and loan company, which was organized in Glendale; and also organized the First Savings bank of Glendale affiliated with the First National bank of Glendale, now the Security Trust & Savings bank of Glendale.

He was one of the organizers of the present Chamber of Commerce, of which he was elected first president. It was during the term of his office that he, as treasurer and principal stockholder, together with his associates, erected the Citizens' building, as administration offices for the Chamber of Commerce, which building was later sold at a very handsome profit to all stockholders.

Disposing of his interests in the above named banks about two years ago, and, after taking a year's rest, he and his associates, in August, 1923, organized the Federal Commercial & Savings bank, which has had a very phenomenal growth, with total resources now over \$1,000,000, and now numbered among Glendale's largest home-owned institutions.

A few months later the Federal Mortgage Co. was organized, with Mr. Cooper as president and it has also had a rapid growth and proved very successful under his management. Mr. Cooper has repeatedly proved himself an able and successful financier, as evidenced by the above and other successful ventures.

TURN HAIR DARK WITH SAGE TEA

If Mixed with Sulphur It Darkens So Naturally Nobody Can Tell

The old-time mixture of Sage Tea and Sulphur for darkening gray, streaked and faded hair is grandmother's recipe, and folks are again using it to keep their hair a good, even color, which is quite sensible, as we are living in an age when a youthful appearance is of the greatest advantage. Nowadays, though, we don't have the troublesome task of gathering the sage and the mussy mixing at home. All drug stores sell the ready-to-use product, improved by the addition of other ingredients, called "Wyeth's Sage and Sulphur Compound." It is very popular because nobody can discover it has been applied. Simply moisten your comb or a soft brush with it and draw this through your hair, taking one small strand at a time; by morning the gray hair disappears, but what delights the ladies with Wyeth's Sage and Sulphur Compound is that, besides beautifully darkening the hair after a few applications, it also produces that soft lustre and appearance of abundance which is so attractive.

—Advertisement.

CERTIFICATE OF BUSINESS Fictitious Firm Name

The undersigned do hereby certify that they are conducting a drug store business at 1505 Burton Way, Beverly Hills, California, under the fictitious firm name of Heegard-Hohn Drug Co., and that said firm is composed of the following persons, whose names and addresses are as follows, to-wit:
A. C. Heegard, 518 Camden Drive, Beverly Hills, Calif.
Dr. Fred J. Hohn, 619 Camden Drive, Beverly Hills, Calif.

Witness our hands this twenty-second day of October, 1924.
A. C. HEEGARD,
F. J. HOHN.
STATE OF CALIFORNIA, ss.
COUNTY OF LOS ANGELES.
On this 22nd day of October in the year nineteen hundred and twenty-four, before me, G. O. Piercey, a Notary Public in and for said County, residing therein, duly commissioned and sworn, personally appeared A. C. Heegard and Fred J. Hohn, known to me to be the persons whose names are subscribed to the within instrument and acknowledged to me that they executed the same. Witness my hand and official seal.
G. O. PIERCEY,
Notary Public in and for said County and State of California.
My Commission Expires May 6, 1925.
Oct23-30Nov6-13-24

THE GLENDALE CIVIC CENTER PROJECT

SOME REASONS WHY WE, AS GOOD CITIZENS, SHOULD VOTE "NO"

Because we cannot afford a civic center on such valuable property.

Because it is an impractical proposition from every angle of good business or good planning.

Because it is not the plan of the Planning Commission or that of any other body qualified to make a plan.

Because there is no plan; no one can tell you where to start or finish.

Because we are already provided with a swimming pool, a library, a Y. M. C. A. has been promised, an auditorium is being privately built and a museum we don't need unless we wish to house some of the relics that are too apparent now. The Civic Center campaign Committee says we need all these to be up to date.

Because a horseshoe park on this property is wasteful extravagance and we will need the money for additional quarters at the poorhouse if we buy a few more luxuries of this kind.

Because we must use the ground if we buy it and we don't want a downtown park. It becomes simply a loafing place for all the reds in the district to congregate and curse the government that gave it them, as is the case every day in the week at Pershing Square or any other square in the business district.

Because you will all agree that you personally never made any use of Pershing Square except to cut through it to save time and never would use it if you lived there and do not like your wife or daughter subjected to the disrespectful stares of the hangers-on when passing through it.

Because the purchase of this property is only the fore-runner of other and larger bond issues for improving the property and for building a new high school in the northwest, where the school board has promised to buy a site with two hundred thousand dollars.

Because it would be necessary to find a place for the 750 children attending the Harvard school, and for whom there is no other place.

Because the expenditure of school district money in this manner is unfair to the people of Tujunga, Sunland, Montrose and all that district who would have no voice in the purchase of a site and might with reason refuse to vote bonds for a building, and the pupils of that school would be forced out, with no relief except half time sessions at the Broadway.

Because we can secure all that is necessary in a city hall with an expenditure of about \$150,000 or about five years' interest on the proposed issue, and locate it on property we own already.

Because the property could be sold for private business purposes for half a million dollars now and give our business district a chance to expand normally and provide the same amount of money without a bond issue.

Because it is not unlikely that the city may some day join Los Angeles, and in that event the city hall would be unnecessary and the city of Los Angeles could and likely would sell the property to provide funds for other things as they have done elsewhere, and as Glendale proposed to do with Tropico city hall. We might be still paying for it at that time.

Because the demands on us for immediate sewers and connections, street work, water bonds, grammar and high school bonds soon to be necessary, are going to make us wonder if it pays to own Glendale real estate.

Because the bare necessities in a city growing as fast as Glendale make the burden doubly hard and creates forced values on home property that are not justified.

Because the taxable limit is based on the earning power of the people and there is a definite limit that is already here.

Because this thing in every phase is the vague dream of a well meaning, but misguided idealist, whose fanciful idea was seized upon by a few hard headed business men and politicians who have made out of it a movement for their own ends. Propaganda has been disseminated and the torch of civic pride has been made to burn with such brilliance that our usual cold-blooded business men and women have been carried away with the glamor of it all. But, let's back off a few paces and take a good look at this child before we adopt it.

This ad is paid for by a group of citizens who appreciate their duty to their city and who have formed an organization known as—

THE TAXPAYERS' PROTECTIVE LEAGUE

Women's Page

Diet And Health

By LULU HUNT PETERS, M. D.

ANSWERS TO CORRESPONDENTS

Saccharine
"Dear Doctor Peters: I am 50 years old and my weight is 278; height, five feet, two inches. What is my correct height? My nerves and rheumatism bother me. I am so keen to reduce."
"I want you to advise me about the following: How much saccharine can I use daily without injury to my system? This would enable me to use things I can't eat without sugar. Also, how often can I go on a liquid diet of from two to five days without injuring myself? I do not mind liquid diets once in a while. Where can I get the 'Daily Dozen' exercises? And how many calories should I go on? I am trying to go on 1200 per day now."

"MRS. A. L. F."
According to our rule of 110 pounds for height, you are five and one-half pounds for every inch over that, you should weigh around 122. So at 278 you are 156 pounds overweight. We can understand your craving to reduce! And sympathize with it, too. We weighed 220 ourselves.
Saccharine is a coal tar product and is 300 to 500 times sweeter than sugar. Like all coal tar products, it is a drug, and any drug used habitually may be harmful. While some people seem to be able to take a small amount of saccharine daily, there have been some cases of poisoning, so it is safer for you not to use it. There is no reason why you should go without sugar entirely. Three cubes of sugar amount to 100 calories, and if you want things a little sweet, take a few calories in the form of sugar.
You can go on a liquid diet one or two days a week, without injury, or longer periods than this once a month. After one low calorie day of 500 to 800 C., the scales often will show a loss of from one to two pounds, and I am advising a low calorie day once a week to those who do not seem to be able to reduce on 1200 calories after the system becomes accustomed to it.
Camp's Daily Dozen, in book form, can be purchased at any bookstore for 10 cents. They are splendid exercises. Special exercises for the abdominal wall and back under the title of atonic abdominal wall, and the name of the corrugated massager have been sent to you if you enclosed s. a. s. e. (self-addressed, stamped envelope). Did you do that?
On 1200 calories a day, the average person will reduce about two pounds a week, because the average person needs 2200 calories a day, and when only 1200 are taken, that leaves 1000 C. to be supplied by the internal fat. It

takes one-quarter of a pound of fat to burn 100 calories' worth. So you lose one-quarter of a pound a day.
Once or twice a week is often enough to be weighed, unless you can weigh on the same reliable scale every day.
Water Retention—Sometimes, even while reducing, the system will retain more water than at other times, and while you might have reduced your one-quarter of a pound of fat, your system might have retained a pound of water. Thus it would seem that you had gained three-quarters of a pound when you really had lost one-quarter of a pound. For instance, it has been found that before menstruation, the body retains more water than usual. The body will also retain more water when salty or concentrated foods are eaten. (It is inadvisable to eat very salty foods at any time, and especially when reducing.) This water is eliminated daily, so when you weigh once a week, you would have only the day's accumulation of water to balance against your seven days' loss in weight. If you have dieted faithfully, that will amount to more than the one day's water retention.
The day before your weekly weighing, have approximately the same kinds and amounts of food as you did the day before your previous weekly weighing. It is a good plan to have your liquid diet on that day because the liquids taken without solid foods rapidly leave the system. Weigh on the same scales, at the same time of day and in the same clothes.
Keep in touch with us, Mrs. A. We are very much interested in you and want to watch you. You may find your nerves and rheumatism will not bother you after you are reduced. How are your teeth? Better get them fixed up. They won't be getting so much exercise.

My Dear Followers—When sending for material which we offer you please remember to enclose a stamped envelope with your full name and address. The pamphlet on reducing and gaining is the only one for which you must enclose four cents in stamps extra. Address your letters to me in care of this paper. Make them as brief as possible, not over 200 words, and type or write them legibly with ink. Please sign your name as evidence of good faith. We will not use any way. Remember it is impossible for me to diagnose for you or to answer your questions. I appreciate very much the beautiful letters you send me, but it is impossible to give you individual advice. The questions you ask will be answered in the column as soon as possible; if they are of general interest. Don't forget the s. a. s. e. if you expect me to send you the information I have offered.

Copyright, 1924, George Matthew Adams.

Personal Notes

Phone Personals to Social Department, Glendale 4000.

Miss Carolyn Rockhold of Riverside is the house guest of Mr. and Mrs. J. E. Rockhold of 330 West Burchett street.

Mr. and Mrs. Frank H. Olmsted of 532 Eighth street have been guests at the Casa Del Rey, Santa Cruz.

Miss Ethel Skidmore left this morning for her home in Oakland after a three weeks' visit with her aunt, Mrs. G. W. Reaser, of 121 North Adams street.

Mrs. H. H. Brown of Hollywood and her sister, Miss Lois Schuyler of 330 West Ivy street motored to Santa Ana yesterday and visited with a college friend.
Mrs. Malcolm MacLennan of 256 West Lexington drive has been unable to meet her classes at the Wilson Intermediate school this week but expects to return to her work Monday.

Why does your Mother-in-law buy canned coffee? Nobody knows how old it is. She pays ten cents extra for the can, while you can buy fresh roasted coffee, ground fresh while you wait, at the Japan Art & Tea Co.—Advertisement 10-30.

CITY PRINTING

at the Council Chamber in the City of Glendale, a public hearing will be given and had on said proposed amendment or change of said Commercial District before the City Council; and

FURTHER NOTICE IS HEREBY GIVEN, that at the hour of 10 o'clock A. M. of the 10th day of November, 1924, at the Council Chamber in the City of Glendale, a public hearing will be given and had on said proposed amendment or change before the City Planning Commission, when and where all persons having any objections to said amendment or change in said Commercial District, may appear before said City Council and said Planning Commission, and present any objection or objections, which they may have to said proposed amendment or change in said Commercial District, as described in said petition and sought to be included in said Commercial District, in the northernly 106 feet of the westerly 116.70 feet of the easterly 167.70 feet of Lot 35, Oliver's Glendale Tract, as per map recorded in Book 9, Page 58 of Maps, Records of Los Angeles County, California.

The petition above referred to is on file in the office of the City Clerk of the City of Glendale, and is hereby referred to for further particulars.
This notice shall be published once in The Glendale Evening News, the official newspaper of said City, at least ten days before the date of the hearing hereinabove mentioned, to-wit: October 30, 1924.

A. J. VAN WIE,
City Clerk of the City of Glendale, Oct. 30, 1924.

CITY PRINTING

NOW THEREFORE, and pursuant to the requirements of said Section 2 of Article XV of the Charter of the City of Glendale, and the direction of said City Council,

PUBLIC NOTICE IS HEREBY GIVEN, that at the hour of 10 o'clock A. M. of the 13th day of November, 1924, at the Council Chamber in the City of Glendale, a public hearing will be given and had on said proposed amendment or change of said Commercial District before the City Council; and

FURTHER NOTICE IS HEREBY GIVEN, that at the hour of 7:30 P. M. of the 10th day of November, 1924, at the Council Chamber in the City of Glendale, a public hearing will be given and had on said proposed amendment or change before the City Planning Commission, when and where all persons having any objections to said amendment or change in said Commercial District, may appear before said City Council and said Planning Commission, and present any objection or objections, which they may have to said proposed amendment or change in said Commercial District, as described in said petition and sought to be included in said Commercial District, in the northernly 106 feet of the westerly 116.70 feet of the easterly 167.70 feet of Lot 35, Oliver's Glendale Tract, as per map recorded in Book 9, Page 58 of Maps, Records of Los Angeles County, California.

The petition above referred to is on file in the office of the City Clerk of the City of Glendale, and is hereby referred to for further particulars.
This notice shall be published once in The Glendale Evening News, the official newspaper of said City, at least ten days before the date of the hearing hereinabove mentioned, to-wit: October 30, 1924.

A. J. VAN WIE,
City Clerk of the City of Glendale, Oct. 30, 1924.

CITY PRINTING

NOW THEREFORE, and pursuant to the requirements of said Section 2 of Article XV of the Charter of the City of Glendale, and the direction of said City Council,

PUBLIC NOTICE IS HEREBY GIVEN, that at the hour of 10 o'clock A. M. of the 13th day of November, 1924,

at the Council Chamber in the City of Glendale, a public hearing will be given and had on said proposed amendment or change of said Commercial District before the City Council; and

FURTHER NOTICE IS HEREBY GIVEN, that at the hour of 7:30 P. M. of the 10th day of November, 1924, at the Council Chamber in the City of Glendale, a public hearing will be given and had on said proposed amendment or change before the City Planning Commission, when and where all persons having any objections to said amendment or change in said Commercial District, may appear before said City Council and said Planning Commission, and present any objection or objections, which they may have to said proposed amendment or change in said Commercial District, as described in said petition and sought to be included in said Commercial District, in the northernly 106 feet of the westerly 116.70 feet of the easterly 167.70 feet of Lot 35, Oliver's Glendale Tract, as per map recorded in Book 9, Page 58 of Maps, Records of Los Angeles County, California.

The petition above referred to is on file in the office of the City Clerk of the City of Glendale, and is hereby referred to for further particulars.
This notice shall be published once in The Glendale Evening News, the official newspaper of said City, at least ten days before the date of the hearing hereinabove mentioned, to-wit: October 30, 1924.

Social : Clubs

Edited by KATHERINE V. SINKS

Luncheon Program

A delightful program has been arranged for presentation at the 10 o'clock luncheon tomorrow at the home of Mrs. H. H. Harris, 1144 North Brand boulevard as a benefit for the Women's Parliamentary Law Club. The money derived from the luncheon will be used to pay the club's pledge to the Y. M. C. A. fund. Mrs. P. H. Houston of Los Angeles, granddaughter of the late General Henry M. Robert will be the guest of honor. The musical program is in charge of Mrs. Virginia Freeman and is as follows: "To a Wild Rose," Mrs. Gladys White and the Misses Graycomb; group of songs, Mrs. A. B. Bonham; selections, Virginia Four quartet; selection from the opera "Tales of Hoffman," Misses Claycomb; "The Night Wind," Mrs. Gretta Cordray; "Love is on the High Road," Pearl Adair Kribbs. Mrs. Roberta T. Young will be accompanist. Mrs. Eva Ghrist will be heard in a number of piano selections. Mrs. Ghrist is a graduate of Oberlin college, Ohio, and studied music in Germany. Later she was head of the music department of Ames college, Iowa.

Old Members' Day

Announcement was made yesterday at the meeting of the Mutual Benefit Reading circle that November 19 will be "Old Members' Day" when members of the circle will be asked to answer roll call yesterday. Those having no means of transportation should get in touch with Mrs. H. V. Henry or Mrs. C. H. Bird. According to the report given yesterday by Mrs. McLean, treasurer, the circle now has 146 paid members, fifty of whom answered roll call yesterday. The book review of the morning was given by Mrs. McLean, who sketched "The Shared Life" by Anne Sherman Monroe. It is a heart to heart talk on the milestones of life, urging parents to let their children share their lives with others as well as share others' lives.
The chapter on "Government of Youth" from "Trend of the Teens" by O'Shea, was read by Mrs. H. V. Henry. This book is now almost finished and another study book will be begun at an early date. Members of the tea committee appointed yesterday are Mesdames C. W. Brunner and A. D. Gaynor.

Silver Wedding

Dr. and Mrs. Oris L. Lytle of 722 North Louise street entertained a group of friends Saturday night in celebration of their silver wedding anniversary. The guests, known as the "Sweet Sixteen" club were all residents of nearby cities. Halloween decorations gave the hospitable home a festive air. Five hundred was played and a number of amusing "stunts" added pleasure to the evening. The delicious supper was carried out by the hostesses, with souveniers and bright touches.
The Lytles were the recipients of a number of gifts.
The guests who enjoyed the affair were Mr. and Mrs. Frank Anderson, Mrs. Vina Anderson and Miss Pauline Anderson of Highland park, Mr. and Mrs. J. P. Jones, Mr. and Mrs. L. N. Courter, Mr. and Mrs. Frank Kemp of Hollywood; Mr. and Mrs. Forest Youngquist of Los Angeles; Mr. and Mrs. Walter Wilson of Monrovia; Mrs. India Whetsel and Miss Geneva Whetsel of Tujunga.

Honors Sister

Complimenting her sister-in-law, Mrs. L. W. McGee of Vienna, Austria, who has been visiting here for several months and plans to leave soon, Mrs. Harry H. Powers entertained at a luncheon and matinee party yesterday afternoon. The luncheon was served at the Powers home, 707 North Isabel street, at a table beautifully decorated with bouquets of yellow roses and maiden hair ferns. Corsage bouquets were found at each place. Place cards were in the form of yellow rose baskets. After the luncheon the party motored to Los Angeles to attend the theatre. Guests were: Mrs. L. W. McGee, Miss Ann Morgan, Mrs. Charles Meadows, Mrs. E. E. East and Mrs. S. P. Davis.

Children Guests

Glendale children in the rooms of Miss Nathalie McKay and Miss Helen Reynolds at the Glendale Intermediate school, secured more new members for the Parent-Teacher association, than other rooms, and were therefore delightfully entertained yesterday afternoon in the cafeteria. It was a cake and ice cream "feed," with the two teachers being presented with bouquets of chrysanthemums. Mrs. Mae Rosenberg, president of the P. T. A., and Mesdames H. V. Ellis Tudow, H. W. Bogen and E. B. Moore were hostesses.

Betrothal Told

Mrs. R. O. Church was hostess at a tea yesterday afternoon, in her beautiful new home on Tenth street, Burbank, to announce the engagement of her daughter Margaret to Homer Walter Messendorf of Los Angeles. The marriage of the young couple will be an event in the near future. Guests were received from Los Angeles, Glendale and Burbank. Among the Glendale guests were Mesdames Archie Parker and R. E. Downing.

Wed at Church

Miss Madge Henry and W. J. Collins, both of Los Angeles, were married at 9 o'clock last night, Wednesday, October 29, 1924 in the study at the Glendale Presbyterian church, by the pastor Rev. W. E. Edmonds. Attending were Miss Viola Bong and J. R. Markley. Mr. Collins was formerly a resident of Glendale, and a member of the Glendale Presbyterian church.

Eastern Star

Glendale Chapter, No. 422, Order of Eastern Star will hold a regular meeting at the Masonic Temple Saturday night at 7:30 o'clock. All members are requested to be present at the election of officers will take place. Visiting members are cordially invited to attend. Mrs. Hermine Hudson, worthy matron, will preside.

Hallowe'en Party

Young people of the Zion Lutheran church are to enjoy an informal social affair tonight at the home of Miss Julie Hofstetter at 585 Palm drive. Miss Hofstetter will be assisted in receiving and entertaining by her parents, Mr. and Mrs. Albert Hofstetter. Hallowe'en games will be features of the affair.

Plan For Party

The Y. L. I. of the Holy Family church will give a Hallowe'en party and dance at the Knights of Columbus hall, 330 East Loma avenue tomorrow night at 8:30 o'clock. Mrs. Jessie Smith and Miss May Chapman are making arrangements for the affair.

Birthday Party

Dorothy Levey celebrated her eleventh birthday last night, when she entertained eight of her classmates at a dinner party given by her mother, Mrs. Harry C. Levey, 811 South Glendale avenue. Games and fancy dances formed entertainment later in the evening.

Presenting Pupils

Violin and piano pupils of Miss Evangeline Quackenbush will appear in recital at the J. A. Quackenbush home, 1119 East Colorado street tonight at 7:30 o'clock. Thirty-six pupils will appear on the program.

STATE SOCIETIES

Colorado reunion, Saturday night, November 1, Flower auditorium, 1720 South Flower street, Los Angeles.
Leavenworth city and county, Kansas picnic, Sunday, November 9, Sections E and L, Brookside park, Pasadena.

Blankets and Bedding

Of the Better Kinds, Reasonably Priced

If you want good bedding, and want the largest assortment to choose from, we invite you to The Irish Linen Store. Blankets of every kind—Sheets, Comforts, Pillows, Padding, Pillow Slips, Towels and All Furnishings.

Good Cotton Blankets for.....	\$2.95 TO \$3.95
Woolnap Blankets for.....	\$4.95 TO \$5.95
Pure Wool Blankets for.....	\$7.50 TO \$25.00

Lauderdale's

IRISH LINEN STORE

117 NORTH BRAND

The Alley Inn's a waiting
For the people congregating
On the evening of the day of Halloween.
Come and bring the children
And watch the boiling cauldron,
While the witches in the kitchen make a din.

The black cats are yawning,
The goblins are a scowling,
And the chicken is a frying in the pan.
Jack O'Lantern sure will greet you,
Phoebe Casagrande meet you,
And the dinner will delight your inner man.

Music, free parking space in rear. Reduced rates for the children. The novelty of the Alley Inn, coupled with the wonderful meals, attract people from everywhere. You haven't seen Southern California till you've seen the

Alley Inn

210 1/2 South Brand Blvd.

Glendale 4284

Benefit Success
The benefit card party given at the Knights of Columbus hall, 330 East Loma avenue for the school fund of the Holy Family Catholic church, last night was a success. The sum of \$94.00 being realized. Thirty-two tables were made during the evening, seven tables of bridge and three tables of five hundred. Prizes were given to each group of tables. The hall was decorated with festoons of black and orange crepe paper and other features were black cats, witches and Jack O'lanterns. Refreshments of cake, doughnuts and coffee were served by the committee Mrs. T. J. Keeler, Mrs. Herman Nelson and Mrs. H. M. Doll.

Madrigal Board

Members of the executive board of the Madrigal club met yesterday afternoon at the home of Mrs. Paul Hoffman, 327 North Maryland avenue. Plans were made for the January concert, several artists being considered to appear with the club. Gratifying reports were heard from the membership drive now in progress. Late in the afternoon Mrs. Hoffman served tea.

I. O. O. F. Social

Odd Fellows and their families are to have an informal social affair tonight in the I. O. O. F. hall on West Broadway. There will be a short business session at 7:30 o'clock followed by an entertainment program and refreshments at 9 o'clock. Visiting lodge men in the city are cordially invited to attend.

Party at School

Parents, teachers and pupils of the Memorial school enjoyed a social time together last night at a Hallowe'en party arranged by the Parent-Teacher association. Bright costumes, lively games, entertainment furnished by the Emerson School of Self-Expression and holiday refreshments were features of the affair.

W. C. T. U. Hostess

Mrs. R. W. Mottern of 211 North Adams street, will be hostess at 2 o'clock tomorrow afternoon at the meeting of the Glendale W. C. T. U. The subject of the afternoon will be "Citizenship Responsibility." Those attending are asked to bring copies of the proposed amendment.

BASS-HUETER PAINTS & VARNISHES

Sold By

GLENDALE HARDWARE CO.

601-3 East Broadway Glendale

WRAGG
Ladies' Garment Shop
Moved From
209 East Broadway
to
507 E. Broadway
1/2 block east of new postoffice
We carry a complete line of
**HOSIERY, UNDERWEAR
AND HOUSE DRESSES**
and are equipped to do
Hemstitching, Plain
Stitching and Hand Made
Button Holes

MARYLAND NURSERY
KINDERGARTEN
633 North Maryland St.
Phone Glendale 3723-W
Will keep your children by the hour, day or week
Best of Care and Instruction
Employed Mothers Will Find This a Very Inexpensive Service

OVERWEIGHT?
Battle Creek System of Scientific Weight Reduction
THE GLENDALE OBESITY CLINIC
215-219 Lawson Building
Evening Appointments
Phone Glendale 3887

Fact fiction Magazine and Feature Page

The Wrath To Come

By E. PHILLIPS OPPENHEIM, Copyright 1924

CHAPTER IX

"I am much obliged to you, sir, for receiving me at this late hour," he said. "My errand is of some importance. I have come to announce to you, in the first place, that my Imperial Master has accepted my resignation from the highly honorable post of Ambassador to Great Britain, and also, from the representation of Japan at the Pact of the Nations. I shall not, therefore, be attending the meeting tomorrow."

"God bless my soul!" Lord Yeovil exclaimed. "I regret very much to hear this."

"Your lordship is very kind," was the agitated reply. "Baron Katina is on his way from Berlin to take my place at the Pact of Nations, and Count Itash is already on the spot if anything of urgency should occur. My Imperial Master has not, I believe, as yet signified his wishes so far as regards my successor at St. James."

"But, my dear Baron, this is most terrible news!" the other declared. "Most unexpected, too. If you will allow me to say so, there is no one with whom it has been a greater pleasure to work or whose loyal support during the past sessions of the Pact I have more appreciated."

"You are very kind, Lord Yeovil, most gracious," his visitor repeated, a little wistfully. "It has come to pass, however, that on a very vital matter, I have found myself unable to conform to the desires and policy of those in whose hands the destiny of my country rests. It is a great relief to me."

"I am sure it must be," the Prime Minister assented, watching his visitor closely. "You have made me very curious. I was not aware that there was any subject of policy at present under consideration which could give scope for a difference of opinion of such drastic moment."

"The greatest tragedy of this matter is now to come," Baron Naga continued solemnly. "For my country's sake I am here to betray her confidence. I shall place you, sir, in possession of certain information which, as President of the Pact of Nations, should be disclosed to you. After

Theatres

Views and Previews From Studios

MURPHY'S COMEDIANS

"The Lonesome Trail," a western comedy-drama with Vin Moore in the leading role, is drawing big audiences to the tent theatre of Murphy Comedians No. 2, San Fernando boulevard at Cedar street, Burbank, states J. W. Davis, manager. The location is within a stone's throw of the Glendale city line and is just as convenient as the former location in Casa Verdugo.

The theatre is heated, which makes it very comfortable at this season, Mr. Davis states, and there is ample parking space for the cars for all patrons. The curtain rises at 8:15 o'clock nightly. Those who have not yet seen Barbara Gurney, who has the ingenue role, are assured a treat. She is a Belasco discovery and makes "The Lonesome Trail" fairly sparkle with her vivacious personality.

She looked at him a little wistfully. "Do you mind so much?" "I mind because—"

He broke off in his sentence. After all, his peculiar knowledge of Gertrude was better kept to himself for the present.

"Well, I don't like to see him make a fool of himself," he concluded a little awkwardly. "The Princess is a married woman and has a jealous husband. She is also a hardened flirt."

"We thought of going on directly," she announced. "What ought we to do about Arthur?"

"I'll go and tell him as soon as you're ready," Grant offered. "We're all here now. Rose and Tommy are outside, and Bobby's gone for his coat. We've had to forgive him. He's so terribly penitent. We've four without him if you like. I suppose you could look after me with an effort," she added, looking up at him.

"Of course I could, but we ought to let him know we're going," Grant decided. "I'll step across and tell him."

Susan turned towards the cloak room, and Grant made his way towards the two people whom they had been discussing. Gertrude welcomed him with a smile, half challenging, half provocative. Her companion was inclined to be querulous.

"Lady Susan wants to know whether you're coming along with us, Lymane?" Grant said. "We're all quite ready."

"Much too early," he grumbled. "There'll be no one there before one o'clock."

Uncle Wiggily

By HOWARD R. GARIS

UNCLE WIGGILY PLAYS HOUSE

Baby Bunt, the little rabbit girl, and Jennie, the little chipmunk girl, were playing games in a leaf-lined hole beneath the roots of an old oak tree. There was a cute little hollow under the tree roots. Dried leaves had fallen in a way that goes straight to the heart.

Everyone who knows plays knows Georgia Woodthorpe, grand old lady of the stage. She has the mother role in "Turn to the Right," and the part has never been better portrayed. William H. Stephens plays Joe, her boy, who is trying to go straight. He gives a moving performance. Altogether, "Turn to the Right" is an exceptionally fine piece of work, as presented by Mrs. Florence Dobinson, and is bound to prove popular with Glendale theatre-goers. The curtain rises night at 8:15 o'clock, with a 2:30 o'clock Saturday matinee.

THE GLENDALE

"Butterfly" concludes today at the Glendale theatre. Friday and Saturday the picture is Buck Jones in "Against All Odds."

THE T. D. & L.

"Daring Youth" concludes today at the T. D. & L. theatre. Friday and Saturday the picture is Nazimova in "Madonna of the Streets."

The 1923 Spanish olive crop was short, due to demands of pickers for high wages.

"The others seem to wish to go."

"Well, there are four of you," Lymane pointed out. "I'll come along presently."

"I think you'd better come with us," Grant persisted. "That is, if the Princess will spare you."

"But I will not spare him," she laughed. "I like him very much. He says much nicer things to me than you do and I do not see why you should hurry him away, just as we are getting on so nicely."

"Neither do I," Lymane agreed. "Make my excuses, there's a good chap. I'll come along within half an hour or so. Lady Susan is in your charge, anyway, not mine. I'm the odd man out."

Grant turned away with the slightest of bows. He found the little party waiting for him downstairs, reinforced by the advent of another young man, a friend of the Lancasters.

There is an inner annex to the bar at the Sporting Club, at either end of which a discreet flirtation is entirely in order. Grant, wandering in for a whiskey and a da towards midnight, was suddenly transfixed by the sight of Gertrude and Arthur, their heads very close together, the young man's air of devotion unmistakable. He watched them with a deepened frown. Suddenly he felt a touch upon his arm. Susan stood by his side. Her voice was as gay as usual, but she was pale and a little tired.

"Disgraceful, isn't it?" she claimed. "We're absolutely deserted. I'm afraid Arthur's lost his head altogether."

"He's a fool!" Grant declared.

(To be continued)

By CHARLIE BROOKS
HOWARD R. GARIS

"Thank you, I shall be glad to have a cup—with some cream and sugar in," answered the rabbit uncle politely.

Bunt made believe pour some tea out of a white pebble pot into the acorn cup. Then she pretended to put in some sugar—of course, the sugar was only sand, really, but it did very well for a playhouse. Then Bunt put some cream from a bark pitcher into Uncle Wiggily's cup.

"Now drink your tea," she said.

"And we hope you like it in our house," added Jennie.

"Oh, it's a lovely playhouse," laughed Uncle Wiggily. "I'm so glad I can have another cup of tea?" he asked, passing his acorn cup, out of which he had pretended to drink.

"Yes, and may I have some nibbles off your ears?" suddenly

SEWELL NORTON
SOPRANO
Voice Specialist—Piano
Voice Trial by Appointment
420 W. Salem St.
12 years' experience abroad
Phone Glen. 3463

MONTROSE TRANSFER
HAULING OF ALL KINDS
Corner Montrose Ave. and
Verdugo Road, MONTROSE
Glendale Branch 816 E. Broadway
Phone Glen. 1220

MAYOTT & CHISAM
CARPENTERS AND BUILDERS
Jobbing Promptly Attended to.
Estimates and Plans Furnished Free.
Address, 3139 Casitas Ave.

UNCLE WIGGILY'S TRICKS—She Knew Her Brother



"CAP" STUBBS— Words Fail!!



Painting or Decorating

For a good job see
Lexie H. Allison
604 South Brand
Also a full line of paints and wall paper. You save money by buying from me.

General Contractor

W. S. Caldwell
326 W. Wilson Ph. Glen. 613-J

Ladies' Bob Shoppe
Women and Children Only
Hours 9 A. M. to 3 P. M.
By Appointment After 3 P. M.
Mr. James Hare, Barber
625 East Chestnut Street
Phone Glen. 2357-M

THE BAXTER BEASLEYS



By EDWINA



— by GENE CARR



PROFESSIONAL CARDS

Dr. Otes's Health Studios
OSTEOPATHY
Kirkville Graduates Only
S. E. Corner Brand and Wilson
Glen. 2201. Folding Tables
for Home Treatments
Home or office. Day or Evening

Dr. Albert Vack, D.C. Ph.C.
CHIROPRACTOR
205 East Harvard
Glendale 3373 Hours 9-12, 1-7
EXAMINATION FREE

Dr. Joseph Albert Kleiser
103 1/2 South Brand Boulevard
Corner of Broadway
Phone Glendale 1335
Doctor of Dental Surgery
Oral Surgeon
All Branches Dentistry
Dr. L. Francis Guyton
Eye, Ear, Nose, Throat
and Goitre

DR. ISABELLE BIDDLE
DR. MARY NOYES
OSTEOPATHIC PHYSICIANS
Diseases of Women and Children
Electro-Therapy, Dietetics
103-A North Brand Blvd.
Suite 7 and 8
Phone Glendale 3299

PIANO TUNING
Adjusting by Our Experienced
Workmen. Satisfaction Guaranteed.
FREE ESTIMATES.
GLENDALE MUSIC CO.
SALMAGIA BROS.
118 South Brand Glendale 90

LAWNS
SPRINKLERS
My new velvet lawn areas a
sensation. I agree to save you
25% on lawn sprinklers,
shrubs, seeds, etc.
Phone 2631-M or 3745-W
JACK SULLIVAN
412 1/2 W. Garfield Ave.

ROOFING
They say it ain't going to
rain no more, but if you want
to keep dry this winter have
C. F. Stepler repair or put on
a new roof for you with com-
position shingles over the old
ones. A ten-year guarantee
with every composition roof.
18 years in Glendale.
C. F. Stepler
404 Ivy St. Ph. Glen. 2007-M

Let "Bake" Sign It!
Baker Sign Co.
SIGNS
603 South Brand Phone 1594

CESSPOOLS
Glen. 2227-W 4207 Parkdale
Sewers and Overflows
Estimates Gladly Given
Leak It Cesspool Tile Mig.
P. W. BAKER

Palace Dry Cleaners
We do our own cleaning, which
enables us to give you better
work and better service than
anyone in Glendale.
Ladies' Garments a Specialty
Glendale 2922—Glendale 36-J
209 N. Glendale Ave.
Glendale, Calif.

MORGAN BROS.
TRANSFER
FURNITURE MOVING
PIANOS AND BAGGAGE
117 East Broadway Phone 75

Butterfield Bros.
CESSPOOL
CLEANED RENEWED REPAIRED
Immediate Attention Given to
Filled Up Cesspools
1331 NORTH PACIFIC AVE.
day or night phone
GLEN. 3123-R

AUTO TOPS
Plate Glass
HENRY H. ROYER
117 West Harvard
Glendale
Phone Glen. 2874-W

VIHOL & BROWN
SIGNS
703 S. Brand Blvd.
Phone Glen. 1701

DUMP TRUCKS
We operate a fleet of Small
Dump Trucks—DIRT MOVING.
We specialize in EXCAVATING
—Street Work—anywhere. Es-
timates furnished. Prices Right.
DELANEY'S Dump Truck Service
1007 S. Mariposa St.—Glen. 4667R

ROOFS
Rainy season is here. Have your
roofs repaired now. All work
guaranteed. 112 N. Central Ave.
Phone Glen 4554-W.

TUTORING
Teacher with Tutor in Your
Home; Language and Music If
Desired.
2239 Sunset Blvd., L. A.
DRexel 6249

J. J. McGINNIS
PLUMBING
PROMPT REPAIR SERVICE
ESTIMATING
122 S. Orange St. Glendale 3410-R

Cheaper to Move than pay rent!
Let us move you!
We give you "right now" service
Large vans, reliable, careful men who know their business
GLENDALE INTER-URBAN EXPRESS
Authorized Carrier, Los Angeles to Glendale. 4 Trucks Daily
Phone Glendale 907 Warehouse—rear of City Hall, Glendale

BETTER DENTISTRY—For Much Less
No Hurt—No Nervous Strain
DR. BACHMAN, 831 E. Windsor Road
Night or Sunday, Phone for Appointment, Glen. 1933-W



FIRST ROUND OF WINTER LEAGUE STARTS SUNDAY

BIG LEAGUE LINEUP TO COMPETE

Six Teams Entered; Glendale Meets Gilmores Here on 'Marty Krug' Day

When the curtain is rung up on the Southern California Winter League schedule Sunday, six teams will take the field for a season that will extend over ten weeks. All plans are complete for the big opening next Sunday, forfeits have been posted, prize money announced and by-laws drafted.

Some of the leading baseball stars along the coast, and several from the American association, will be in the lineups this winter. The six clubs will be managed by big time performers, and the pick of the minor leagues will make up the personnel of the teams.

There will be \$500 in prize money for the season. Clubs finishing first, second and third will get a cut in the cash. Each club plays every other team in the league twice, thus making a ten-game schedule. At the conclusion of the schedule the clubs finishing first and second will play a three-game series.

The six clubs in the Winter League, which will be one of the fastest semi-pro circuits along the coast this season, and a loop that will keep the baseball fans talking, are listed below, with the managers of each team:

Teams and Bosses
Glendale White Sox, managed by Ray French, big leaguer, who played with New York, Yankees, Boston Red Sox, Brooklyn, Chicago White Sox and Minneapolis; home grounds, White Sox park, San Fernando road and Park avenue, Glendale.

Hollywood Merchants, managed by Les Cook, sensational catcher last season for the Salt Lake Bees of the Pacific Coast league; home grounds, Hollywood Merchants park, Hollywood.

Gilmore Oil, managed by Cliff McCarr, former Pacific Coast leaguer; home grounds, Gilmore park, Los Angeles.

Pasadena Merchants, managed by Charley Deal, veteran baseball star, who played last season with Vernon; home grounds, Tournament park, Pasadena.

St. Louis Colored Giants, managed by L. S. Cobb; home grounds, Goodyear park, Sixty-fourth street and Central avenue, Los Angeles.

Colored All-Stars, managed by A. Jasper; home grounds, Goodyear park, Sixty-fourth street and Central avenue, Los Angeles.

On the Gilmore Oil team, which opens the season here next Sunday against the White Sox, are such players as "Ferdie" Schupp, former pitching ace of the New York Giants; "Tubb" Spencer, of the Angels; Les Cook, of the Mormon crew; Bob Wallace, former Angel hurler; Beumiller, Carlisle, Coleman, Chellgard, Ennis, Davis and McKnight.

Glendale will observe "Marty Krug" day next Sunday, when the pilot of the Los Angeles team will be in the White Sox lineup, playing second base. Krug is a Glendalan, and in the closing days of the Pacific Coast season the eyes of the baseball world were upon him as he led the Seraphs out of the cellar and up the steps to the top of the loop in six weeks' time, to finish second to Seattle.

In the White Sox lineup will be Manager French, at shortstop; Ken Penner, Vernon hurler, on the mound; Denny Murphy, his Tiger team mate, working behind the log; "Chicken" Hawks, at first; Marty Krug, at second; Patsy Bodie, big leaguer, in the outfield, along with Emerson, Dorman, Bonelly, or Tellez.

Georgia's Apple Crop Tops All State Records

ATLANTA, Oct. 30.—The north Georgia apple crop which is the largest in the history of the state is being shipped freely and fruit is bringing good prices.

IF SKIN BREAKS OUT AND ITCHES APPLY SULPHUR

Just the moment you apply Mentho-Sulphur to an itching, burning or broken out skin, the itching stops and healing begins, says a noted skin specialist. This sulphur preparation made into a quick cold cream, gives such a quick relief, even to fiery eczema, that nothing has ever been found to take its place.

Because of its germ-destroying properties, it quickly subdues the itching, cools the irritation and heals the eczema right up, leaving a clear, smooth skin in place of ugly eruptions, rash, pimples or roughness. You do not have to wait for improvement. It quickly shows. You can get a little jar of Rowles Mentho-Sulphur at any drug store.—Advertisement.

LAWRENCE PERRY SAYS

Special Correspondent of The Glendale Evening News, Copyright, 1924
NEW YORK, Oct. 30.—Something like order is beginning to establish itself out of the early football chaos. Certain teams in the various sections have emerged so that now it is possible to segregate a select few from the mass. It is quite true that unfortunate things will later happen to some of this outstanding group; nonetheless among its components are those who will ultimately don the champion's bays in their various sections.

If two elevens were to be selected to fight it out for the national championship right now, unquestionably the vast majority of votes would be cast for Illinois and Notre Dame. And of all teams the two seem most likely to finish the season with unblemished records.

Both Illinois and Notre Dame are beautifully trained outfits. Zuppke's men handle the ball more cleanly than the Hoosiers, but, on the other hand, whereas four of Notre Dame's backs play a vital part in advancing the ball, the Illinois attack to date has been almost exclusively built around Grange.

How far would Grange get against the fierce and accurate backfield tackling of the South Bend team? No one can answer this, but the writer would be willing to wager he would not by any means run hog-wild like he did against Michigan. Notre Dame's play is on a wider pattern than those of Illinois and no coach would elect to install the huddle system of signals with a cool, resourceful prestidigitator such as Stuhldreher at the helm.

The writer is inclined to regard the open field and line interference of Illinois as superior to anything of the sort he has yet seen. All in all, a game between Notre Dame and Illinois will be well worth seeing.

Three eastern elevens have neither been defeated nor tied to date. Pennsylvania, Lafayette and Syracuse. But in ranking elevens many facts should be considered other than the fact of victory. For example, a very logical question would be: "If any of this trio had met Notre Dame, or Dartmouth, or Yale, would it still be undefeated?" In other words, scores should not be the sole consideration in the rating of teams.

The writer believes, thus, that Dartmouth, although tied by Yale, must be ranked with the best in this section just now. Tying Yale and beating Harvard on successive Saturdays is a notable feat, make no mistake. Syracuse has great promise, but she has done nothing yet to suggest vast power and dazzling ability. Of all the leading teams, Pennsylvania, in defeating the powerful Columbia team, seems to have turned in the most signal performance.

Lafayette's victories over the in-and-out Pittsburgh eleven and a fair W. and J. team were creditable but not amazing. Here is the way it should look: First group, Pennsylvania, Dartmouth, Syracuse, Lafayette, Yale. Second group, Army, Columbia, Princeton, Brown, Harvard, Rutgers, Lehigh, Holy Cross and Boston college.

Western conference: Illinois, first; Chicago, Iowa and Ohio State bracketed for second. (This trio has tie games to mar records.) Michigan third, having retrieved herself through defeat of Wisconsin; Wisconsin and Minnesota bracketed in fourth place. Then Purdue, Northwestern and Indiana.

Pacific coast: Southern California still leads. California second, Stanford in Washington university and Stanford. All these elevens, however, are strong contenders for the conference title. Bears are getting formidable.

Southwestern conference (rated by Sam Pace of Fort Worth Star-Telegram): Southern Methodist university, first; Texas university and Texas A. and M. bracketed for second, but Texas having the edge. Then, in order, Baylor, Rice Texas Christian, Arkansas and Oklahoma A. and M.

South Atlantic (rated by W. T. Christian of Richmond News-Leader): Navy and Georgetown, first. Then, in order, Virginia, W. and L. V. P. L. M. I., William and Mary, Wake Forest, Maryland, North Carolina, King, N. C. State, Roanoke, Catholic U., Davidson, Johns Hopkins, Hampton Sydney, University of Richmond, Washington college, St. John's, Lynchburg, George Washington, Elon, Western Maryland and Randolph, Macon.

Southern conference (rated by Zipp Newman of Birmingham News): Alabama and Georgia bracketed for first. Tulane, Florida, Auburn, Kentucky, Mississippi A. and M. and South Carolina in order in the second group. Georgia Tech, Vanderbilt, Louisiana State, Sewanee, Tennessee, Mississippi and Clemson in order in the third group.

Missouri Valley conference (rated by Frederick Ware of the Omaha World Herald): Drake takes the lead from Missouri by its decisive victory over Oklahoma, conqueror of Nebraska, while Missouri was lucky to beat the Kansas Aggies. Nebraska must beat Missouri next Saturday to stay there. Missouri will be out if it loses.

Rocky Mountain conference rated by Les Goates, Salt Lake Deseret News: Colorado U., Colorado Aggies, Utah, Utah Aggies, Montana State, Denver university, Colorado college, Colorado School of Mines, Wyoming and Young, in the order named.

DYNAMITERS PLAY ON CITY GROUNDS

First 1924 Heavyweight Tilt Here Tomorrow Against Alhambra Squad

By ROSS M. RUSSELL, JR. Of The Evening News Staff.

The first heavyweight football game of the 1924 season on the home grounds will be played tomorrow afternoon, when the Glendale Dynamiters tangle with the Alhambra Moors in a gridiron battle which may decide the Central league championship. The game will be played on Broadway field, and will be called at 3:30 o'clock sharp.

If the Dynamiters win tomorrow, they will practically clinch the Central league banner. The Moors hold second berth in the standing at the present time, and a Glendale victory will smash the Alhambra chances.

Citrus Union High school promises to be the locals' most formidable opponent. The Lemons should win their game tomorrow with Covina, and, if the Dynamiters beat Alhambra, Citrus will slip into second place in the standing.

The scores of the past games show Covina South Pasadena and Alhambra all on about even terms. The Moors fought Covina to a 7-7 tie last Friday, while, on the first day of the schedule, Covina and South Pasadena battled to an 0-0 tie. The Tigers, who meet Monrovia tomorrow, should win by a 12-6 score.

If these predictions hold good, the locals will top the league with 1000 per cent, while Citrus runs second with 666. Alhambra and South Pasadena will be tied for third honors with 550 each; Covina will have 250, while Monrovia brings up the rear with three losses.

Probable Lineup
Coach Hayhurst last night was busy perfecting a few new plays with Clayton "Droopy" Phillips in the backfield. Phillips is a heavy man, and although he is somewhat slow in getting off, will be a hard person to stop. Hayhurst plans on starting Phillips at full back Friday, with Charles Lundie at right tackle.

Ray Green, guard, may also have a chance to get in the game. Jack Ward, halfback, who played a wonderful game against the U. S. C. frosh, will probably be used by Coach Hayhurst during some stage of the game. Jack Booker, who starred in last Friday's game with Monrovia, will play at half and do the locals' booting. Bud Elliott will play quarter, as usual, and Dick Ryan will play left half and safety during the defensive.

Fence Constructed
The new \$2000 fence has just been completed. The fence is a little over 2000 feet in length, and has five gates. Work has been under way on it for over a week. It is about five feet high and is made of durable, heavy wire mesh which is on steel posts set deeply in the ground.

Admission to the game will be 50 cents, but season tickets are on sale at Roberts & Echols for \$2, which includes admission to all football, baseball and basketball league games in which the Glendale teams compete. As the present bleachers, which seat 1500, are inadequate, provision is being made to take care of many more people along vantage points on the side and banks. Automobiles will be allowed to park on the bank. Contracts have been let for another set of bleachers adjoining the present, which will seat 1500 additional persons. These bleachers will not be ready for nearly three months. Work was started on them yesterday.

BOWLING SCORES

CASWELL GATEWAYS			
Players—	1	2	3
Royls	193	187	170
Grass	213	193	209
Whaley	162	155	169
Caswell	161	212	157
Pleasant	178	171	216
Totals	885	948	921
GLENDALE TILE & MANTEL			
Players—	1	2	3
Roder	159	207	158
Fortunato	143	194	192
Fanley	120	180	155
Sandis	210	180	189
Brehme	213	190	181
Totals	914	937	933

SCHOLARLY SOUL AT TEAM'S HELM

Ohio State Coach Tells How He Made Good Team From Bad One In 1923

By DAVIS J. WALSH International News Sporting Editor

COLUMBUS, Ohio, Oct. 30.—Dr. John Wilce, a scholarly soul and just a bit austere, had been telling the writer in his precise way just how he had made a good team at Ohio State in 1924 out of a bad team in 1923. Subsequently, for purposes of accuracy, I asked:

"Just who were these men you esteem?"

"I esteem them all," said he, and glanced out over the gridiron where two of his four varsity teams were engaged in legalized mayhem.

"Why you big palooka!" The doctor was speaking. His tone was that of a man who inadvertently swallowed banana oil in place of mayonnaise and a depressing silence fell upon all.

Interruption
"I've been telling you for a week where to stand on that shift."

The doctor clutched the big palooka by the loose of his jersey, and urgently but not unfirmly, showed him where to stand.

"Yes, I have a pretty good team," he continued reflectively. "It looks like our best since 1921 when we were beaten out of the conference championship in the last minute of the season. Oh, awful. Let me at him!"

They let the doctor at him. The latter was seemingly a very estimable young man who had just plunged through the center of the line for ten yards.

"Didn't I tell you not to run that way? You were all bent up like a safety pin. When you hit the line, hit it this way."

Dr. Wilce abruptly charged the hapless individual, head up, and brushed him right out of his (the doctor's) path. He dusted his hands and came back.

As He Was Saying
As the doctor was saying, he esteems all of the men. They have made a good record in conference football to date, beating Purdue and getting ties with Chicago and Iowa. They still have games to play with Indiana, Michigan and Illinois.

"If there's any skull cracking to be done, we'll get it then." This was Wilce's succinct way of sizing up the situation ahead.

He is pretty well satisfied with his line, which averages about 150 pounds, but the backfield is extremely light, and none too adept, at that. Karow, he regards as his best back, but the young man tore a careless cartilage in his knee and won't be ready until the Michigan game. Captain Young at center also is out with a broken rib, but Watts, the 195-pound wildcat, is just as good as ever.

In Cunningham he has one of the heaviest ends in captivity. He weighs 196 pounds and is reason-ably agile for a man of his embonpoint.

VOLLEY BALL GAMES

Three senior volley ball teams from Wilson Intermediate school played the first scheduled games at Glendale Intermediate school Wednesday afternoon under the supervision of Mrs. Margaret Struble and Miss Pearl Webster of the Wilson faculty and Miss Dorothy Misner of the Glendale faculty. Wilson was victorious in two of the games.

While New Zealand has been having a boom in business buildings, there have been practically no homes constructed.

H. L. MILLER CO.
Real Estate and Insurance
109 S. Brand Glen. 853

Boxing Notes

Tony Fuente, sensational heavyweight, cut another notch on his K. O. belt last night when he dumped Jack Lynch in fifteen seconds after the pair started the main event at the Wilmington A.

NEWARK, N. J., Oct. 30.—Mickey Walker, having defeated Jock Malone, veteran St. Paul middleweight in twelve rounds here last night, was expected to come to terms for defense of his world's welterweight title in a bout with Dave Shade in the near future.

In beating Malone, Walker took nearly every round of the fight from the western middleweight, largely by his aggressiveness and heavy punching.

AT NEWARK—Mickey Walker outpointed Jock Malone, St. Paul, 12 rounds; Willie Harmon, New York, scored technical knockout over Harry Martone, Jersey City, sixth round; Ball Maxted, Newark, knocked out Gordon Muncie, Bayonne, N. J., fourth round; Danny Ramsay, New York, knocked out Frankie Herman, world's welterweight title in a New York, second round; Artie

Jordan, and Frankie Bates, Newark, fought four round draw. AT BALTIMORE—Lefty Lew Mayers, Baltimore, beat Earl Baird, featherweight, New York, twelve rounds.

ST. LOUIS, Oct. 30.—Growers of Doniphan county, Missouri, have organized a strawberry production company and expect to plant 151 acres in Jerries next year.

NEW WORLD'S RECORDS LAST WEEK AND

1 OCT 25 CHARLOTTE, N.C.
Milton wins 250 mile Inaugural Classic with new world's record of 118.7 miles per hour

2 OCT 21 PASADENA, CAL.
Essex conquers Mt. Wilson grade in high gear with observer establishing new record of 32 minutes 29 seconds

3 OCT 24 CHARLOTTE, N.C.
Hill sets new world's speedway record of 35.4 seconds for mile and quarter averaging 126.75 mph

4 OCT 20 SAN BERNARDINO, CAL.
Ludlow riding Henderson sets 1/4 mile world's motorcycle record of 127.1 miles per hour

TOMMY MILTON

NORMAN ETGES

FRED LUDLOW

AT NEWARK—Mickey Walker outpointed Jock Malone, St. Paul, 12 rounds; Willie Harmon, New York, scored technical knockout over Harry Martone, Jersey City, sixth round; Ball Maxted, Newark, knocked out Gordon Muncie, Bayonne, N. J., fourth round; Danny Ramsay, New York, knocked out Frankie Herman, world's welterweight title in a New York, second round; Artie

ST. LOUIS, Oct. 30.—Growers of Doniphan county, Missouri, have organized a strawberry production company and expect to plant 151 acres in Jerries next year.

ST. LOUIS, Oct. 30.—Growers of Doniphan county, Missouri, have organized a strawberry production company and expect to plant 151 acres in Jerries next year.

ST. LOUIS, Oct. 30.—Growers of Doniphan county, Missouri, have organized a strawberry production company and expect to plant 151 acres in Jerries next year.

ST. LOUIS, Oct. 30.—Growers of Doniphan county, Missouri, have organized a strawberry production company and expect to plant 151 acres in Jerries next year.

ST. LOUIS, Oct. 30.—Growers of Doniphan county, Missouri, have organized a strawberry production company and expect to plant 151 acres in Jerries next year.

ST. LOUIS, Oct. 30.—Growers of Doniphan county, Missouri, have organized a strawberry production company and expect to plant 151 acres in Jerries next year.

ST. LOUIS, Oct. 30.—Growers of Doniphan county, Missouri, have organized a strawberry production company and expect to plant 151 acres in Jerries next year.

ST. LOUIS, Oct. 30.—Growers of Doniphan county, Missouri, have organized a strawberry production company and expect to plant 151 acres in Jerries next year.

ST. LOUIS, Oct. 30.—Growers of Doniphan county, Missouri, have organized a strawberry production company and expect to plant 151 acres in Jerries next year.

ST. LOUIS, Oct. 30.—Growers of Doniphan county, Missouri, have organized a strawberry production company and expect to plant 151 acres in Jerries next year.

ST. LOUIS, Oct. 30.—Growers of Doniphan county, Missouri, have organized a strawberry production company and expect to plant 151 acres in Jerries next year.

ST. LOUIS, Oct. 30.—Growers of Doniphan county, Missouri, have organized a strawberry production company and expect to plant 151 acres in Jerries next year.

ST. LOUIS, Oct. 30.—Growers of Doniphan county, Missouri, have organized a strawberry production company and expect to plant 151 acres in Jerries next year.

ST. LOUIS, Oct. 30.—Growers of Doniphan county, Missouri, have organized a strawberry production company and expect to plant 151 acres in Jerries next year.

ST. LOUIS, Oct. 30.—Growers of Doniphan county, Missouri, have organized a strawberry production company and expect to plant 151 acres in Jerries next year.

ST. LOUIS, Oct. 30.—Growers of Doniphan county, Missouri, have organized a strawberry production company and expect to plant 151 acres in Jerries next year.

ST. LOUIS, Oct. 30.—Growers of Doniphan county, Missouri, have organized a strawberry production company and expect to plant 151 acres in Jerries next year.

ST. LOUIS, Oct. 30.—Growers of Doniphan county, Missouri, have organized a strawberry production company and expect to plant 151 acres in Jerries next year.

ST. LOUIS, Oct. 30.—Growers of Doniphan county, Missouri, have organized a strawberry production company and expect to plant 151 acres in Jerries next year.

ST. LOUIS, Oct. 30.—Growers of Doniphan county, Missouri, have organized a strawberry production company and expect to plant 151 acres in Jerries next year.

ST. LOUIS, Oct. 30.—Growers of Doniphan county, Missouri, have organized a strawberry production company and expect to plant 151 acres in Jerries next year.

ST. LOUIS, Oct. 30.—Growers of Doniphan county, Missouri, have organized a strawberry production company and expect to plant 151 acres in Jerries next year.

ST. LOUIS, Oct. 30.—Growers of Doniphan county, Missouri, have organized a strawberry production company and expect to plant 151 acres in Jerries next year.

ST. LOUIS, Oct. 30.—Growers of Doniphan county, Missouri, have organized a strawberry production company and expect to plant 151 acres in Jerries next year.

ST. LOUIS, Oct. 30.—Growers of Doniphan county, Missouri, have organized a strawberry production company and expect to plant 151 acres in Jerries next year.

ST. LOUIS, Oct. 30.—Growers of Doniphan county, Missouri, have organized a strawberry production company and expect to plant 151 acres in Jerries next year.

ST. LOUIS, Oct. 30.—Growers of Doniphan county, Missouri, have organized a strawberry production company and expect to plant 151 acres in Jerries next year.

ST. LOUIS, Oct. 30.—Growers of Doniphan county, Missouri, have organized a strawberry production company and expect to plant 151 acres in Jerries next year.

ST. LOUIS, Oct. 30.—Growers of Doniphan county, Missouri, have organized a strawberry production company and expect to plant 151 acres in Jerries next year.

ST. LOUIS, Oct. 30.—Growers of Doniphan county, Missouri, have organized a strawberry production company and expect to plant 151 acres in Jerries next year.

ST. LOUIS, Oct. 30.—Growers of Doniphan county, Missouri, have organized a strawberry production company and expect to plant 151 acres in Jerries next year.

RICHFIELD
The GASOLINE OF POWER
RICHLUBE

RICHFIELD won them all!

- 1 Charlotte, N. C., Oct. 25th. Richfield Gasoline wins first three places in 250 mile Inaugural Speedway Event and establishes four new World's Speedway Records.
- 2 Charlotte, N. C., Oct. 24th. Benny Hill using Richfield Gasoline, sets a New World's Speedway Record of 35.4 seconds for mile and a quarter—averaging better than 126.75 miles per hour!
- 3 Pasadena, Cal., Oct. 21st. Norman Etges using Richfield Gasoline and driving a strictly stock model Essex Six sealed in high gear, carrying an observer and officially checked and timed by representatives of six Los Angeles newspapers, sets new record of 32 minutes 29 seconds for famous Mt. Wilson grade.
- 4 San Bernardino, Cal., Oct. 20th. Fred Ludlow, riding a stock model Henderson motorcycle, sets a new quarter mile world's motorcycle record of 127.1 miles per hour using Richfield Gasoline.

EASIER STARTING-GREATER POWER-QUICKER PICKUP-LONGER MILEAGE

Get Genuine Full Powered Richfield Gasoline at any of these Authorized Dealers

GLENDALE	GLENDALE	EAGLE ROCK	VERDUGO VALLEY
A. & D. Service Station 801 East Colorado	H. W. Lund 301 East Broadway.	Eagle Rock Service Station 4755 Eagle Rock Blvd.	Evans' Garage Montrose.
Wm. Widmeyer 1910 San Fernando road	Owens' Service Station Verdugo and Wilson.	BURBANK	
Parker's Service Station 1200 South Brand Blvd.	D. & L. Service Station Verdugo and Glendale Blvd.	R.-J. Service Station 830 East San Fernando road.	Young's Garage and Service Station Verdugo City.
H. & D. Service Station 3747 Glendale Blvd.	Fred Philzger 329 North Central.	Barbank Service Station 251 West San Fernando road.	Summit Glen Service Station Michigan Avenue.
Richfield Oil Co. Station Los Feliz road.	Blackwell & Son Kenneth road and Sonora.	West Burbank Garage 2015 West San Fernando Rd.	Monte Vista Service Station Michigan Ave., Tujunga.
Fred Kinsley Los Feliz and Central.	EAGLE ROCK		Walnut Drive Service Station Michigan Ave., Sunland.
Lyland Garage 126 North Maryland.	Eagle Rock Pk. Service Station Annandale and El Modena.	J. M. Hartley Service Station 425 East Tenth Street.	La Crescenta Service Station Michigan Ave., La Crescenta.
	Preston Service Station 1450 East Colorado.	VERDUGO VALLEY	
		Geise & Payne Service Station Montrose.	Three-Way Inn Michigan Ave., La Canada.

The Glendale Evening News
Published Daily Except Sunday
A. T. COWAN, Publisher and Proprietor
Office of Publication, 129 South Brand Boulevard
PHONE GLENDALE 4000

THE GLENDALE EVENING NEWS HAS THE COMPLETE LEASED WIRE REPORT OF THE INTERNATIONAL NEWS SERVICE.

Entered as second class matter, January 12, 1922, at the Postoffice at Glendale, Calif., under the Act of Congress of March 3, 1879.

SUBSCRIPTION RATES—Single copy, 2 cents; by carrier, one year \$5.00; six months, \$2.75; three months, \$1.40; one month, 50 cents. Subscribers not receiving their paper before 7 p. m. please call Glendale 4000.

MAIL SUBSCRIPTIONS—70 cents per month.

SUBSCRIPTIONS Do not expire unless written notification is received at this office.

OFFICIAL NEWSPAPER OF THE CITY OF GLENDALE

The Glendale Evening News will not be responsible for more than one incorrect insertion of any advertisement ordered for more than one time, nor will it guarantee accuracy or assume responsibility for errors occurring in advertisements. No refund will be made on any advertisement ordered cancelled.

GLENDALE, CALIFORNIA, THURSDAY, OCTOBER 30, 1924

REAL ESTATE FOR SALE
GLENDALE PROPERTY
3 WONDERFUL BUYS

BEAUTIFUL NEW 5-RM. STUCCO—Tile roof, large living and dining room, large kitchen, 2 dandy bedrooms, built-in tub with shower, tile sink, H. W. floors throughout, cement drive to garage. Lot 50x127. It's a real bargain at \$5300 and only \$500 cash.

VERY ATTRACTIVE 5-RM. STUCCO—Close in, N.E. section, large living room, 2 airy bedrooms, 5 closets, enclosed bath with shower, basement with furnace, automatic heater, double garage, beautiful lawn and shrubbery. Owner paid \$11,000 for this home. Will sell for \$8000, and only \$1000 cash.

MAGNIFICENT NEW 7-RM. STUCCO—Close in, N.E. section, built home. Large pergola front and side, extra large living room, finished basement, 2 front rooms, massive fireplace, 2-inch quarter-sawn H.W. floors over tongue and groove sub-floor, built-in tub, tile sink, solid cement drive, double garage, walls in all the rooms beautifully decorated. You will appreciate it as a real 7-room home. This beautiful home is extra well located and we can sell for a few days only at \$2500 or less cash.

Don't buy until you have seen these. We advertise nothing but real bargains.

EXCLUSIVE AGENTS
3 cars in N.E. section, Mr. Trent, Mr. McLean, or Mr. Akers.
412 East Broadway
PHONES
Glendale 378-J
Evenings 613-408-W

REAL ESTATE FOR SALE
GLENDALE PROPERTY
BUNGALOW BUYS

\$1350 DOWN
New 5-room, hillside location, close to schools and transportation; \$6900, \$1350 down and \$75 per mo.

\$1500 DOWN
Right of Glendale Ave. close to everything, very homey and comfortable; \$7000, with \$1500 down and \$60 per month.

Dietrich REALTY CO.
133 1/2 So. Brand Glendale 2921

REAL ESTATE FOR SALE
VACANT LOTS AND ACRES
\$500

HOLLYWOOD
\$450 cash will buy equity in Hollywood residence lot. Balance \$250, payable \$10 a month. Glen. 4248-W. 5 1/2 A.M. drive.

3 Acres
Good Level Land
In San Fernando Valley

Three room house, garage, water, gas, electricity. Only \$2500, and \$1200 cash.

One acre poultry ranch—a real money maker! 1750 young White Leghorn hens go with place. Equipped for 2000 hens. Two houses, water, electricity, and a well. Only \$7500, \$2750 cash and \$50 a month.

California Real Estate Co.
207 W. San Fernando Blvd. Burbank

CLASSIFIED ADS

To assure proper classification, copy for classified ads should be in this office before 11:30 a. m. on date of publication.

First insertion—minimum charge 30 cents, including 4 lines, conditional 5 lines to the line, additional lines 1 cent per line.

Subsequent consecutive insertions 5 cents per line. Minimum, 15 cents.

Ads inserted under "Announcements" will be charged for at the rate of 1 cent per line per day. Not responsible for errors in ads received over telephone.

Not responsible for more than one incorrect insertion of advertisement.

No display advertising accepted on classified pages.

Office hours: 6:30 a. m. to 9:30 p. m. except Sunday.

333 South Brand Blvd. Phone Glendale 4000.

REAL ESTATE FOR SALE
GLENDALE PROPERTY
GLENDALE BARGAINS

6 ROOMS—\$6750 \$1875 CASH
New 6-room bungalow, 3 bedrooms, 2 bathrooms, tile roof, tile floor, all oak floors, fine built-in features, tile sink, tile bath with shower, automatic water heater, double garage. This is a beautiful home in every particular and is the best buy in Glendale, close to car and school. Will take in lot as part payment.

5 ROOMS—\$4000—\$750 CASH
New 5-room colonial, all oak floors, plenty built-in features, 1/2 bath, tile car, close to school. A snap.

4 ROOMS—\$4200—\$500 CASH
4 rooms, 2 blocks to new high school, 3 bedrooms.

12 1/2 SMALL PLACE
3 ROOMS, ON 90x107 LOT
Nice room house, 12 1/2 blocks to car, close to schools. A good money maker. \$4200; \$750 cash.

R. N. STRYKER
215 N. BRAND GLEN. 846

REAL ESTATE FOR SALE
GLENDALE PROPERTY
Beautiful Bellevue

13 homes under construction in radius of 2 blocks. We can offer 1 choice lot at \$1500, 50x150, street work paid.

HAYWARD & McCARTNEY
142 So. Brand Glendale 1065
1310 So. Brand Glendale 1115

REAL ESTATE FOR SALE
GLENDALIAN'S

Mark Twain was given a great dinner in London on the occasion of his 70th birthday. In his speech he remarked, "I'm an old man, and I've had lots of trouble. Most of it never happened." Smiles. Trouble shooers will starve on sustenance building and living in homes. Your particular, critical inspection is invited to our 5-room Spanish, \$12,000. Want Glendale or vicinity.

OWN YOUR OWN
"HOW ABOUT THAT GLENDALIAN HEIGHTS LOT?"
Corner of Adams, for \$2150. Isn't the price right?

"L. A. INCOME FOR EXCHANGE"
Four-room flat—new stucco—West Adams Dist., corner—One block to car—on Kenwood. Price \$12,000. Want Glendale or vicinity.

INCOME PROPERTY
Glendale Ave. Business property, consists of duplex house, store building and 10 lots. Good income and big future ahead of this property.

North Howard St., 7-room stucco home, a wonderful location, excellent buy, \$2000 cash handles.

OPEN SUNDAYS
MEET TIP CASSELLMAN, MANAGER REAL ESTATE DEPARTMENT.

The Homecrafts CORPORATION
416-18 E. Colorado Blvd. Glen. 2136

REAL ESTATE FOR SALE
GLENDALE PROPERTY
FOR SALE

A gentleman's country home in beautiful Verdandians. New, modern nine-room house. Furnished or unfurnished. Servants' apartments above garage. 2 acres, located high and slightly. Large live oaks, sycamore trees, shrubbery and flowers. Living, spring, of pure mountain water, piped to house. City water and all city utilities. Located in Oakland Country, near town. Electric cars and bus line. Owner moving to California. Very easy terms, to reliable party.

INCOME
Here's a chance to make big money. I have authority from an eastern owner to sell a lot 50x150, with 2 good houses, rentals with good income, 1/2 block from new 5-story hotel, NOW UNDER CONSTRUCTION at Broadway and Glendale Ave. Value should increase 50% in 90 days. Can sell \$3000 under present.

HERE'S A CHANCE OF A LIFETIME!
Corner frontage on Glendale Ave., 1/2 block from the new 6-story Hotel Glendale, at 1/2 price adjoining lots are being sold. \$1000. Good income to carry property; easy terms. You will have to act quickly, as the owner is up north and I have authority to sell at this price only until his return.

MRS. M. L. TIGHT
510 N. Glendale Ave. Glen. 1657

REAL ESTATE FOR SALE
GLENDALE PROPERTY
REDUCED FROM \$7500 TO \$6950

We have just three of that type house left out of 25 we have built this year, and will sell at a special price to "CLEAN THE SLATE."

SPECIFICATIONS
6 rooms, 2 1/2 bathrooms, stucco exterior; tile bath and sink, hardwood floors throughout; walls tastefully decorated in panel design; newest type electric fixtures, fireplace and mantle in soft tone of "claycroft" tile to blend in with the general coloration tone.

These places were built to sell for \$7500, but we are going to "CUT LOOSE" for your benefit.

\$1250 CASH NEEDED.
Lehigh Inv. Corp.
212 1/2 W. Broadway Glendale 3260

REAL ESTATE FOR SALE
GLENDALE PROPERTY
FACTORY SITES

OF ALL SIZES FOR SALE
with or without buildings. Will build to suit tenant and lease on attractive terms.

KENNELSON REALTY CO.
1034 S. San Fernando Glen. 1551

REAL ESTATE FOR SALE
GLENDALIAN'S

"IT'S A BIG DROP"
Owner must have cash by Nov. 5 to protect other interests; offers the finest view lot in Glendale.

"THINK OF IT"
Corner lot 137 1/2 ft. all street improvements in and paid for; \$1500 spot cash, or \$2000 on terms. Will accept \$1200. Better see Mr. Landes at once.

THE FRANK MELINE CO.
227 So. Brand Glendale 103

REAL ESTATE FOR SALE
GLENDALE PROPERTY
FOR SALE

A real home; two bedrooms, large cement porch at front and at side, hardwood floors, double garage, less than two blocks from Brand. \$1500 handles. Owner will sacrifice for quick sale.

Best Buy IN GLENDALE FOR \$5000

A real home; two bedrooms, large cement porch at front and at side, hardwood floors, double garage, less than two blocks from Brand. \$1500 handles. Owner will sacrifice for quick sale.

Glendale Realty Co.
131 1/2 S. Brand Glendale 44

REAL ESTATE FOR SALE
GLENDALE PROPERTY
RESIDENCE HALF ACRES

Tract fronting on Victory Blvd., near Glendale Ave. good soil, some fruit and walnut trees, excellent view, reasonably restricted, quite a few acres, real fire, real gas and electricity to each half acre, street improved, decomposed granite, \$15,500 to \$1800, terms 15% down and \$1500 and interest per month, liberal discount for cash.

Also lot 42' by 150' with two-room garage house, new and modern, tile bath, and nothing to pay for \$350 down, balance \$20 and interest per month.

\$700 DOWN
Close in home, all conveniences; tile bath and sink; real fire, real gas and electricity to each half acre. \$4500. Price \$7200. Phone Glendale 2991-J, evenings.

VACANT LOTS AND ACRES
\$1000 Cash Buys Lot
Just off Kenneth road. Owner needs money.

Stomb's Realty Co.
346 No. Central Glendale 4198

REAL ESTATE FOR SALE
GLENDALE PROPERTY
512 WING STREET

GOOD TERMS
3 bedrooms, attractive breakfast room, tile bath and sink; real fire, real gas and electricity to each half acre. French gray and ivory finish. Call owner, Glen. 4533-W.

BEST BUY IN SIX-RM. BUNGALOW
in Glendale, near Broadway and Central. Call Rigdon, owner or phone Glendale 735.

\$700 DOWN
Close in home, all conveniences; tile bath and sink; real fire, real gas and electricity to each half acre. \$4500. Price \$7200. Phone Glendale 2991-J, evenings.

VACANT LOTS AND ACRES
\$1000 Cash Buys Lot
Just off Kenneth road. Owner needs money.

Stomb's Realty Co.
346 No. Central Glendale 4198

REAL ESTATE FOR SALE
GLENDALIAN'S

LA CRESCENTA
LA CRESCENTA—Attractive little home, furnished, big corner lot with fruit and flowers and space for another house, near school, etc. Take up or offer paper as per McGinnis, 213 E. Broadway, Glen. 3063.

WANTED FOR CASH
Home or good income property. Glendale or Alhambra. Big corner lot vacant lot. Address P. O. Box 451, Glendale, Phone Glen. 2230.

WANT TO BUY
2, 4 OR 5-ROOM HOUSES TO BE MOVED
GARNETTE CAMPBELL
1334 S. Glendale Ave. Glen. 1002-M

FOR EXCHANGE
I WANT A Glendale bungalow up to \$8000, \$1500 cash, balance 3 years. See Mr. H. W. Miller, 109 S. Glendale, Phone Glen. 3244.

WANT DOUBLE BUNGALOW OR INCOME PROPERTY
in exchange for dandy 3-acre poultry ranch, 5-room bungalow, furnished, price \$13,500; mortgage \$2800. Submit to Poppelman-Temple & Walter, 910 Porter Ave., San Fernando, Cal. 2745.

WANT TO TRADE
Equity \$2500 in modern 6-room home, east side, for clear lot or small house in N.W. Owner, 505 Porter St., Glendale 384-W.

WANT TO TRADE
\$15000 lot on Colorado Blvd. worth far more to trade for ranch in the Charles W. Miller colony preferably about \$10,000.

ENGLEDEY REALTY CO.
109 S. Glendale Phone Glen. 3244

REAL ESTATE FOR SALE
GLENDALE PROPERTY
FOR SALE

6 ROOMS, N. W. section; deep lot; near car line; price right; small down payment; 2 1/2 blocks from Mr. Lindamood about it today.

THE FRANK MELINE CO.
227 So. Brand Glendale 103

REAL ESTATE FOR SALE
GLENDALE PROPERTY
RESIDENCE

New 6-room stucco, ultra modern, tile roof, tile bath, automatic heater, tile sink, tile floor, unit furnace, central air conditioning, double garage, excellent street, wonderful view. Only \$3000. Very easy terms.

RESIDENCE LOT
Foothill lot, above Tenth street, 50x150. Street work paid. Only \$1500.

BUSINESS LOT
50 ft. on East Colorado, near 1st development. Can be improved to pay good returns NOW. Only \$5000. 1/2 acre. Will it be worth in 5 years?

DUNCAN & HENRY
415 E. Edwy. Glen. 1735

REAL ESTATE FOR SALE
GLENDALE PROPERTY
5 ROOM HOME

GOOD LOCATION
\$2250—\$750 CASH

Stomb's Realty Co.
346 No. Central Glendale 4198

REAL ESTATE FOR SALE
GLENDALIAN'S

WANTED FOR CASH
Home or good income property. Glendale or Alhambra. Big corner lot vacant lot. Address P. O. Box 451, Glendale, Phone Glen. 2230.

WANT TO BUY
2, 4 OR 5-ROOM HOUSES TO BE MOVED
GARNETTE CAMPBELL
1334 S. Glendale Ave. Glen. 1002-M

FOR EXCHANGE
I WANT A Glendale bungalow up to \$8000, \$1500 cash, balance 3 years. See Mr. H. W. Miller, 109 S. Glendale, Phone Glen. 3244.

WANT DOUBLE BUNGALOW OR INCOME PROPERTY
in exchange for dandy 3-acre poultry ranch, 5-room bungalow, furnished, price \$13,500; mortgage \$2800. Submit to Poppelman-Temple & Walter, 910 Porter Ave., San Fernando, Cal. 2745.

WANT TO TRADE
Equity \$2500 in modern 6-room home, east side, for clear lot or small house in N.W. Owner, 505 Porter St., Glendale 384-W.

WANT TO TRADE
\$15000 lot on Colorado Blvd. worth far more to trade for ranch in the Charles W. Miller colony preferably about \$10,000.

ENGLEDEY REALTY CO.
109 S. Glendale Phone Glen. 3244

REAL ESTATE FOR SALE
GLENDALE PROPERTY
FOR SALE

6 ROOMS, N. W. section; deep lot; near car line; price right; small down payment; 2 1/2 blocks from Mr. Lindamood about it today.

THE FRANK MELINE CO.
227 So. Brand Glendale 103

REAL ESTATE FOR SALE
GLENDALE PROPERTY
RESIDENCE

New 6-room stucco, ultra modern, tile roof, tile bath, automatic heater, tile sink, tile floor, unit furnace, central air conditioning, double garage, excellent street, wonderful view. Only \$3000. Very easy terms.

RESIDENCE LOT
Foothill lot, above Tenth street, 50x150. Street work paid. Only \$1500.

BUSINESS LOT
50 ft. on East Colorado, near 1st development. Can be improved to pay good returns NOW. Only \$5000. 1/2 acre. Will it be worth in 5 years?

DUNCAN & HENRY
415 E. Edwy. Glen. 1735

REAL ESTATE FOR SALE
GLENDALE PROPERTY
5 ROOM HOME

GOOD LOCATION
\$2250—\$750 CASH

Stomb's Realty Co.
346 No. Central Glendale 4198

REAL ESTATE FOR SALE
GLENDALIAN'S

WANTED FOR CASH
Home or good income property. Glendale or Alhambra. Big corner lot vacant lot. Address P. O. Box 451, Glendale, Phone Glen. 2230.

WANT TO BUY
2, 4 OR 5-ROOM HOUSES TO BE MOVED
GARNETTE CAMPBELL
1334 S. Glendale Ave. Glen. 1002-M

FOR EXCHANGE
I WANT A Glendale bungalow up to \$8000, \$1500 cash, balance 3 years. See Mr. H. W. Miller, 109 S. Glendale, Phone Glen. 3244.

WANT DOUBLE BUNGALOW OR INCOME PROPERTY
in exchange for dandy 3-acre poultry ranch, 5-room bungalow, furnished, price \$13,500; mortgage \$2800. Submit to Poppelman-Temple & Walter, 910 Porter Ave., San Fernando, Cal. 2745.

WANT TO TRADE
Equity \$2500 in modern 6-room home, east side, for clear lot or small house in N.W. Owner, 505 Porter St., Glendale 384-W.

WANT TO TRADE
\$15000 lot on Colorado Blvd. worth far more to trade for ranch in the Charles W. Miller colony preferably about \$10,000.

ENGLEDEY REALTY CO.
109 S. Glendale Phone Glen. 3244

REAL ESTATE FOR SALE
GLENDALE PROPERTY
FOR SALE

6 ROOMS, N. W. section; deep lot; near car line; price right; small down payment; 2 1/2 blocks from Mr. Lindamood about it today.

THE FRANK MELINE CO.
227 So. Brand Glendale 103

REAL ESTATE FOR SALE
GLENDALE PROPERTY
RESIDENCE

New 6-room stucco, ultra modern, tile roof, tile bath, automatic heater, tile sink, tile floor, unit furnace, central air conditioning, double garage, excellent street, wonderful view. Only \$3000. Very easy terms.

RESIDENCE LOT
Foothill lot, above Tenth street, 50x150. Street work paid. Only \$1500.

BUSINESS LOT
50 ft. on East Colorado, near 1st development. Can be improved to pay good returns NOW. Only \$5000. 1/2 acre. Will it be worth in 5 years?

DUNCAN & HENRY
415 E. Edwy. Glen. 1735

REAL ESTATE FOR SALE
GLENDALE PROPERTY
5 ROOM HOME

GOOD LOCATION
\$2250—\$750 CASH

Stomb's Realty Co.
346 No. Central Glendale 4198

REAL ESTATE FOR SALE
GLENDALIAN'S

WANTED FOR CASH
Home or good income property. Glendale or Alhambra. Big corner lot vacant lot. Address P. O. Box 451, Glendale, Phone Glen. 2230.

WANT TO BUY
2, 4 OR 5-ROOM HOUSES TO BE MOVED
GARNETTE CAMPBELL
1334 S. Glendale Ave. Glen. 1002-M

FOR EXCHANGE
I WANT A Glendale bungalow up to \$8000, \$1500 cash, balance 3 years. See Mr. H. W. Miller, 109 S. Glendale, Phone Glen. 3244.

WANT DOUBLE BUNGALOW OR INCOME PROPERTY
in exchange for dandy 3-acre poultry ranch, 5-room bungalow, furnished, price \$13,500; mortgage \$2800. Submit to Poppelman-Temple & Walter, 910 Porter Ave., San Fernando, Cal. 2745.

WANT TO TRADE
Equity \$2500 in modern 6-room home, east side, for clear lot or small house in N.W. Owner, 505 Porter St., Glendale 384-W.

WANT TO TRADE
\$15000 lot on Colorado Blvd. worth far more to trade for ranch in the Charles W. Miller colony preferably about \$10,000.

ENGLEDEY REALTY CO.
109 S. Glendale Phone Glen. 3244

REAL ESTATE FOR SALE
GLENDALE PROPERTY
FOR SALE

6 ROOMS, N. W. section; deep lot; near car line; price right; small down payment; 2 1/2 blocks from Mr. Lindamood about it today.

THE FRANK MELINE CO.
227 So. Brand Glendale 103

REAL ESTATE FOR SALE
GLENDALE PROPERTY
RESIDENCE

New 6-room stucco, ultra modern, tile roof, tile bath, automatic heater, tile sink, tile floor, unit furnace, central air conditioning, double garage, excellent street, wonderful view. Only \$3000. Very easy terms.

RESIDENCE LOT
Foothill lot, above Tenth street, 50x150. Street work paid. Only \$1500.

BUSINESS LOT
50 ft. on East Colorado, near 1st development. Can be improved to pay good returns NOW. Only \$5000. 1/2 acre. Will it be worth in 5 years?

DUNCAN & HENRY
415 E. Edwy. Glen. 1735

REAL ESTATE FOR SALE
GLENDALE PROPERTY
5 ROOM HOME

GOOD LOCATION
\$2250—\$750 CASH

Stomb's Realty Co.
346 No. Central Glendale 4198

REAL ESTATE FOR SALE
GLENDALIAN'S

WANTED FOR CASH
Home or good income property. Glendale or Alhambra. Big corner lot vacant lot. Address P. O. Box 451, Glendale, Phone Glen. 2230.

WANT TO BUY
2, 4 OR 5-ROOM HOUSES TO BE MOVED
GARNETTE CAMPBELL
1334 S. Glendale Ave. Glen. 1002-M

FOR EXCHANGE
I WANT A Glendale bungalow up to \$8000, \$1500 cash, balance 3 years. See Mr. H. W. Miller, 109 S. Glendale, Phone Glen. 3244.

WANT DOUBLE BUNGALOW OR INCOME PROPERTY
in exchange for dandy 3-acre poultry ranch, 5-room bungalow, furnished, price \$13,500; mortgage \$2800. Submit to Poppelman-Temple & Walter, 910 Porter Ave., San Fernando, Cal. 2745.

WANT TO TRADE
Equity \$2500 in modern 6-room home, east side, for clear lot or small house in N.W. Owner, 505 Porter St., Glendale 384-W.

WANT TO TRADE
\$15000 lot on Colorado Blvd. worth far more to trade for ranch in the Charles W. Miller colony preferably about \$10,000.

ENGLEDEY REALTY CO.
109 S. Glendale Phone Glen. 3244

At the Tent Theatre
San Fernando Blvd. and Cedar Ave., Burbank

MURPHY COMEDIANS

Presents
TONIGHT, FRIDAY AND SATURDAY

"THE LONESOME TRAIL"
A Corking Good Western Comedy

COMMENCING SUNDAY
"PEG O' MY HEART"

The Big, Commodious Tent, Well Heated, Plenty Free Parking Space. A Big Show For Little Money.

Admission—Adults 35c, Children 10c

FOLLOW THE CROWD
Tickets on sale at any Business House

Pearl Keller
School of Dancing and Dramatic Art
109-A So. Central Ave. at Broadway

BALLROOM DEPARTMENT

Direction of Mr. and Mrs. Jules W. Swart
Classes

Ill-School Thursday Evenings at 7:30
Beginners, Friday Evenings at 7:45
Advanced, Friday Evenings at 9:00
Juvenile, Saturday Afternoons at 2:00
Private Lessons Daily by Appointment
Telephones, Glendale 1423-J & 1377

TONIGHT

Every Road in Glendale Will "Turn to the Right"
WITH THE DOBSON PLAYERS

Do not fail to see this famous comedy—featuring
Georgia Woodthorpe and William H. Stephens

AT THE CLUB PLAYHOUSE, CENTRAL AT LEXINGTON
Wednesday and Saturday Matinees, 50c; Children, 25c
Box Office, Club Playhouse, Phone Glendale 4488
Reservations, Glendale Book Store, 113 S. Brand, Glendale, 219
Curtain, 2:15 and 8:15

PLEASURE AND EXERCISE IN
BOWLING AND BILLIARDS

GLENDALE RECREATION CENTER, 133 NORTH BRAND BLVD.

DEATHS - FUNERALS

JOSEPH R. THRALL
Funeral services for Joseph R. Thrall were held at 2 o'clock this afternoon in the Kiefer & Eyerich chapel on East Broadway. Interment took place in Forest Lawn Memorial park.

FRANK GROGER
Funeral services for Frank Groger of Los Angeles, who died Tuesday, were held at 10 o'clock this morning in the L. G. Scovern chapel on South Brand boulevard. Interment took place in Forest Lawn Memorial park. The deceased is survived by his son C. T. Groger, secretary of the Burbank Chamber of Commerce and by a son and daughter in San Francisco.

MRS. DOLLIE JANE TRASK
Mrs. Dollie Jane Trask died Wednesday, October 23, 1924, at 1549 Glenwood road at the age of 74 years. Funeral services are being arranged by G. Scovern.

Transfer of Residence Needed to Cast Vote

Editor, The Evening News:—I wish to call the attention of the voters of Glendale to the eighteenth amendment that is to come before the people on November 4. Scores have been phoning me to learn if there is not some way to get around the fact that they have not registered a transfer of residence prior to the closing of the registration books on October 4.

As the law now stands, there is no lawful way. This is too bad, too, and is creating a feeling of great hardship. Dozens and dozens will not be able to vote lawfully at the coming election because they did not attend to this little matter of transfer. The passage of Amendment 18, named suffrage, will entirely cure this trouble for the future. No one should fail to vote and vote yes for this amendment.

MRS. SIOBANE DELL,
Deputy Registrar.

TUJUNGA NOTES

TUJUNGA, Oct. 30.—More than seventy guests attended the second annual banquet given by the Tujunga Woman's club. Husbands of club members shared honors as guests with Mr. and Mrs. John Steven McGroarty. The clubrooms were decorated in club colors, yellow and white. Mrs. Dora Warnick was mistress of ceremonies. Speeches were made by Mr. McGroarty, Mrs. Mark White, president of the club; Mrs. Dean, George Buck, H. E. Black of Alhambra, Mrs. Guy Black, Mrs. Minnie Dunn played a piano solo, and later a duet with Miss Blumfield. Dancing followed.

Underweight children are receiving the special attention to the health department at the Tujunga school. Hot lunches will be served in an effort to correct wrong tendencies in diet.

Boys of the seventh and eighth grades have formed teams for playing soccer. Their first game resulted in a 2 to 2 tie.

Mrs. Stella Graham, who has been making an extended visit with relatives in Pasadena, spent Sunday at her Tujunga home.

Mr. and Mrs. Walden Fink of La Verne spent the week-end with relatives in Tujunga.

Mr. and Mrs. E. Noren of Los Angeles visited Tujunga friends Sunday.

Mrs. Dodge, formerly a resident of Santa Monica is the guest of Miss Elizabeth Benedict at her home on El Centro street.

Location of Precincts Changed for Election

Editor The Evening News: Voters precinct No. 13 and River precinct, have been changed from 334 North Concord street to garage in rear of 667 West Doran street, corner Pioneer drive and Chester street.

JOHN R. GREY,
Inspector.

Asks Amendment to Ordinance On Fire

City Attorney Ray L. Morrow was instructed by members of the City Council today to amend the fire ordinance so that all territory lying within 150 feet of Brand boulevard on both sides the entire length of the thoroughfare, and 150 feet on both sides of Colorado street the entire length, shall be included in fire district No. 1.

Humane Society Plans Meet Tomorrow Night

Glendale Humane society will hold a meeting in the Chamber of Commerce office tomorrow night at 8 o'clock with Edwin Kulp, president in charge. The meeting promises to be interesting as several committees will report on various work. Every member is urged to be present.

Honeycombs eighteen feet high are built by bees of India.

S. C. KINCH GIVES STAND ON ISSUE

Announces He Has Taken No Part In Campaign for Civic Center

Editor, The Evening News:—Please permit me to express through your valuable paper the position I have been and am taking in the civic center campaign.

From its inception, the proposed civic center project has been conducted by non-official committee and, for that reason, I have felt it my duty as a member of the City Planning commission to take no active part whatever in the campaign. Have not attended any meetings pro or con, nor have I given permission for my name to be used.

S. C. KINCH

Women Majors Named For Work In Campaign

Mrs. Daniel Campbell, head of the women's team organization, announces the following women as majors of the four women's divisions, to work in the residential districts of Glendale during the active campaign, from November 17 to 22. Mrs. H. E. Bartlett, Mrs. E. H. Botsford, Mrs. E. J. Morgan, Miss Leta McCoy. Each of these majors will have at least five captains under her direction, and each of the five captains of each division will have a team of at least five workers. With a women's team organization of this size it will be possible to cover the residential districts of Glendale without placing an undue burden upon a small group of workers.

Location of Precincts Changed for Election

Editor The Evening News: Voters precinct No. 13 and River precinct, have been changed from 334 North Concord street to garage in rear of 667 West Doran street, corner Pioneer drive and Chester street.

JOHN R. GREY,
Inspector.

Lynch on Sunset boulevard. Reports of members show that progressive teas to raise funds for the association are proving successful. The association has adopted for a slogan this year, "Every parent a member." Short talks on subjects of general interest to parents will be given at the next meeting of the association.

A fancy dress ball will be given by the Tujunga Woman's club tomorrow night at the Garden of the Moon dance pavilion.

An entertainment was recently given by the Mystic Maidens at the home of Bonita Clark on Olive street. Games were played and refreshments were served.

Multiple listing, incorporation and the annexation of Verdugo hills territory to the city of Glendale were subjects of discussion at the regular meeting of the Tujunga valley realty board.

An accommodation garage for employee's autos has been built in the rear of the Tujunga Valley bank.

Mrs. Hallinan of Los Angeles was a recent visitor in Tujunga for the purpose of inspecting building sites suitable for a residence.

Transfer of Residence Needed to Cast Vote

Editor, The Evening News:—I wish to call the attention of the voters of Glendale to the eighteenth amendment that is to come before the people on November 4. Scores have been phoning me to learn if there is not some way to get around the fact that they have not registered a transfer of residence prior to the closing of the registration books on October 4.

As the law now stands, there is no lawful way. This is too bad, too, and is creating a feeling of great hardship. Dozens and dozens will not be able to vote lawfully at the coming election because they did not attend to this little matter of transfer. The passage of Amendment 18, named suffrage, will entirely cure this trouble for the future. No one should fail to vote and vote yes for this amendment.

MRS. SIOBANE DELL,
Deputy Registrar.

IN SOUTHLAND

By Southland News Service.

THEY NOW WEAR KILTS

HOLLYWOOD, Oct. 30.—The limit in dress has been reached here! Wallace McDonald's imported Scotch terrier is to be seen parading the boulevard with his film actor-master, the dog clad in tailored kilts. It saves Wallace explaining the nationality of the "pooch."

SEAPLANES WRECKED

SAN PEDRO, Oct. 30.—An inquiry has been instituted here regarding the wrecking of three seaplanes owned by the Pacific Airways, Inc., whose officers believe their ships have been the victims of speedboats used by rum runners. The San Pedro police have launched an active campaign against local bootleggers, also.

SHANGHAI HARD HIT

SAN PEDRO, Oct. 30.—Living costs in Shanghai have increased 70 per cent since hostilities in China commenced, according to Captain Robert Englund of the Standard Transportation tanker Argon, now in port here. American ships are forced to go through much red tape in order to land cargoes there, he adds.

DUCKS TOO NUMEROUS

BRAWLEY, Oct. 30.—A woman rancher residing north of this city appealed to two hardware stores to send hunters to her 160-acre barley field, recently irrigated, to kill off the ducks which are making "a mud puddle" of the place, she asserted. Many geese and ducks are to be had by nimrods in the Imperial valley now.

ABSENT VOTER LONELY

RIVERSIDE, Oct. 30.—But one "absent voter" so far has requested that he be mailed a ballot, according to County Clerk D. G. Clayton. Absent voters' ballots may be received until November 18, it is stated, although the board of supervisors must commence their canvass November 10.

PAVING JOB COMPLETED

LOS ANGELES, Oct. 30.—The Pacific Electric railway today announced that the installation of new trackage and paving of Glendale boulevard in the Edendale district was completed. But motorists observed the Southern California Telephone Co. tearing up the pavement to install a new conduit, so obstructions still persist.

Creek Indian to Speak At Nazarene Services

Sunday school hour at the First church of the Nazarene, temporarily held at Park and Glendale avenues, will be given over to a missionary program to be presented by the scholars of the Sunday school. Mr. Reynolds, a full-blood Creek Indian, will talk. He is taking a course of study at the Pasadena Nazarene college, preparatory to doing missionary work among his people. He also will speak at the missionary service of the Nazarene Young People's society at 6:30 o'clock Sunday night. People attending the services are requested to bring Indian head nickels and pennies as offerings. The public is invited to attend both services.

The world has 18,000,000 motor vehicles.

6 1/2% Money for Homes in Glendale

The Mortgage Guarantee Company of Los Angeles is prepared at all times to consider applications for building loans, and new or re-placement loans on residential properties.

Loans of this type are made in amounts of \$2000 to \$8000 (not to exceed 50% of our appraisal values, for a term of fifteen years, secured by first trust deeds, and reducible at the rate of 3% semi-annually, with privilege of re-payment without bonus after three years.

Loans are also made on well-located courts, flats, apartment, and business properties.

Applications accompanied by the necessary information will be given prompt attention.

MORTGAGE Guarantee Company
626 South Spring Street
Los Angeles, Calif.

At LA CRESCENTA

LA CRESCENTA, Oct. 30.—Construction work on new homes in the Collins-Watkins subdivision on Montrose avenue began yesterday morning. These homes will differ from other homes in La Crescenta valley in that they are constructed of native stone.

Miss Ruth Barbour has arrived from Chicago and will be a guest for the winter of Mrs. Eloise Farmer of Altura avenue.

Ladies' Missionary society of the La Crescenta Community church will hold its regular business meeting in the parlors of the church tomorrow afternoon. All are invited to attend. The meeting is called at 2:30 p. m.

Verdugo Hills council of Boy Scouts will hold another of its popular bonfire picnics at Robinson's ranch, West Honolulu avenue Saturday night. Prominent speakers will be heard, games will be played, and the usual storytelling bee will be held. Supper will be served at 6:30 p. m. Guests are asked to bring their own sandwiches. Coffee and chocolate will be provided at the ranch. A program of sports will feature the afternoon. The public is invited. To reach the Robinson ranch drive out west on Honolulu avenue, past the reservoir to the first stone house on the south side of the road. Boys will be posted here to direct visitors.

La Crescenta Valley Parent-Teacher association reading circle met at the home of Mrs. Marian Tillery yesterday afternoon. "Little Hands" was finished. At the next meeting William McKeever's "Training the Boy" will be read alternately with "Training the Girl." November meetings will be held at the home of Mrs. Thomas S. Brown on West Montrose avenue. Members are asked to bring sandwiches. Tea and milk served. Meetings are opened at 11 o'clock, reading till 12, when lunch is served. Reading is resumed at 1 p. m. until 2 o'clock. Next week members will leave after the reading in a body for the La Crescenta schoolhouse, where the regular Parent-Teacher association meeting will be held. All members of the valley are invited.

Union Pacific Trains Make Schedule Change

Announcement is made through the Glendale Union Pacific office that, beginning Sunday November 2, all Union Pacific trains will arrive at and depart from the Arcade station, Los Angeles, occupied jointly with the Southern Pacific system. This depot is located at Fifth street and Central avenue, Los Angeles.

FOLEY PILLS REACHED THE SORE SPOT

Mrs. Ellen Reighard, South Fork, Pa., writes: "I had been suffering with my kidneys and nothing seemed to touch the aching spot until I procured FOLEY PILLS, with wonderful results." FOLEY PILLS, a diuretic stimulant for the kidneys, gently and thoroughly flush and cleanse the kidneys and help to eliminate poisonous waste matter. Try a bottle today and you will be well pleased with the relief obtained. The use of FOLEY PILLS increases kidney activity.

Glendale Pharmacy, 638 East Broadway; Hub Pharmacy, Glendale and Colorado; Acacia Pharmacy, 922 South Glendale Avenue.—Advertisement.

AT LA CRESCENTA

LA CRESCENTA, Oct. 30.—Construction work on new homes in the Collins-Watkins subdivision on Montrose avenue began yesterday morning. These homes will differ from other homes in La Crescenta valley in that they are constructed of native stone.

Miss Ruth Barbour has arrived from Chicago and will be a guest for the winter of Mrs. Eloise Farmer of Altura avenue.

Ladies' Missionary society of the La Crescenta Community church will hold its regular business meeting in the parlors of the church tomorrow afternoon. All are invited to attend. The meeting is called at 2:30 p. m.

Verdugo Hills council of Boy Scouts will hold another of its popular bonfire picnics at Robinson's ranch, West Honolulu avenue Saturday night. Prominent speakers will be heard, games will be played, and the usual storytelling bee will be held. Supper will be served at 6:30 p. m. Guests are asked to bring their own sandwiches. Coffee and chocolate will be provided at the ranch. A program of sports will feature the afternoon. The public is invited. To reach the Robinson ranch drive out west on Honolulu avenue, past the reservoir to the first stone house on the south side of the road. Boys will be posted here to direct visitors.

La Crescenta Valley Parent-Teacher association reading circle met at the home of Mrs. Marian Tillery yesterday afternoon. "Little Hands" was finished. At the next meeting William McKeever's "Training the Boy" will be read alternately with "Training the Girl." November meetings will be held at the home of Mrs. Thomas S. Brown on West Montrose avenue. Members are asked to bring sandwiches. Tea and milk served. Meetings are opened at 11 o'clock, reading till 12, when lunch is served. Reading is resumed at 1 p. m. until 2 o'clock. Next week members will leave after the reading in a body for the La Crescenta schoolhouse, where the regular Parent-Teacher association meeting will be held. All members of the valley are invited.

Union Pacific Trains Make Schedule Change

Announcement is made through the Glendale Union Pacific office that, beginning Sunday November 2, all Union Pacific trains will arrive at and depart from the Arcade station, Los Angeles, occupied jointly with the Southern Pacific system. This depot is located at Fifth street and Central avenue, Los Angeles.

FOLEY PILLS REACHED THE SORE SPOT

Mrs. Ellen Reighard, South Fork, Pa., writes: "I had been suffering with my kidneys and nothing seemed to touch the aching spot until I procured FOLEY PILLS, with wonderful results." FOLEY PILLS, a diuretic stimulant for the kidneys, gently and thoroughly flush and cleanse the kidneys and help to eliminate poisonous waste matter. Try a bottle today and you will be well pleased with the relief obtained. The use of FOLEY PILLS increases kidney activity.

Glendale Pharmacy, 638 East Broadway; Hub Pharmacy, Glendale and Colorado; Acacia Pharmacy, 922 South Glendale Avenue.—Advertisement.

6 1/2% Money for Homes in Glendale

The Mortgage Guarantee Company of Los Angeles is prepared at all times to consider applications for building loans, and new or re-placement loans on residential properties.

Loans of this type are made in amounts of \$2000 to \$8000 (not to exceed 50% of our appraisal values, for a term of fifteen years, secured by first trust deeds, and reducible at the rate of 3% semi-annually, with privilege of re-payment without bonus after three years.

Loans are also made on well-located courts, flats, apartment, and business properties.

Applications accompanied by the necessary information will be given prompt attention.

MORTGAGE Guarantee Company
626 South Spring Street
Los Angeles, Calif.

At LA CRESCENTA

LA CRESCENTA, Oct. 30.—Construction work on new homes in the Collins-Watkins subdivision on Montrose avenue began yesterday morning. These homes will differ from other homes in La Crescenta valley in that they are constructed of native stone.

Miss Ruth Barbour has arrived from Chicago and will be a guest for the winter of Mrs. Eloise Farmer of Altura avenue.

Ladies' Missionary society of the La Crescenta Community church will hold its regular business meeting in the parlors of the church tomorrow afternoon. All are invited to attend. The meeting is called at 2:30 p. m.

Verdugo Hills council of Boy Scouts will hold another of its popular bonfire picnics at Robinson's ranch, West Honolulu avenue Saturday night. Prominent speakers will be heard, games will be played, and the usual storytelling bee will be held. Supper will be served at 6:30 p. m. Guests are asked to bring their own sandwiches. Coffee and chocolate will be provided at the ranch. A program of sports will feature the afternoon. The public is invited. To reach the Robinson ranch drive out west on Honolulu avenue, past the reservoir to the first stone house on the south side of the road. Boys will be posted here to direct visitors.

La Crescenta Valley Parent-Teacher association reading circle met at the home of Mrs. Marian Tillery yesterday afternoon. "Little Hands" was finished. At the next meeting William McKeever's "Training the Boy" will be read alternately with "Training the Girl." November meetings will be held at the home of Mrs. Thomas S. Brown on West Montrose avenue. Members are asked to bring sandwiches. Tea and milk served. Meetings are opened at 11 o'clock, reading till 12, when lunch is served. Reading is resumed at 1 p. m. until 2 o'clock. Next week members will leave after the reading in a body for the La Crescenta schoolhouse, where the regular Parent-Teacher association meeting will be held. All members of the valley are invited.

Union Pacific Trains Make Schedule Change

Announcement is made through the Glendale Union Pacific office that, beginning Sunday November 2, all Union Pacific trains will arrive at and depart from the Arcade station, Los Angeles, occupied jointly with the Southern Pacific system. This depot is located at Fifth street and Central avenue, Los Angeles.

FOLEY PILLS REACHED THE SORE SPOT

Mrs. Ellen Reighard, South Fork, Pa., writes: "I had been suffering with my kidneys and nothing seemed to touch the aching spot until I procured FOLEY PILLS, with wonderful results." FOLEY PILLS, a diuretic stimulant for the kidneys, gently and thoroughly flush and cleanse the kidneys and help to eliminate poisonous waste matter. Try a bottle today and you will be well pleased with the relief obtained. The use of FOLEY PILLS increases kidney activity.

Glendale Pharmacy, 638 East Broadway; Hub Pharmacy, Glendale and Colorado; Acacia Pharmacy, 922 South Glendale Avenue.—Advertisement.

Sidewalks and Curbs For Glendale Avenue

Sidewalks and curbs which have not been installed on Glendale avenue will be put in if the members of the Glendale Advancement association send a letter requesting the work to the City Council, it was reported at the meeting of the association held today noon at the Harriett Mae Tea room. This information, according to Mrs. M. L. Tipton, chairman of the committee, came from City Manager V. B. Stone. The association passed a resolution offered by S. C. Kinch endorsing the extension of Santa Monica boulevard. C. W. Ingledue, president, presided at the meeting.

Union Pacific Trains Make Schedule Change

Announcement is made through the Glendale Union Pacific office that, beginning Sunday November 2, all Union Pacific trains will arrive at and depart from the Arcade station, Los Angeles, occupied jointly with the Southern Pacific system. This depot is located at Fifth street and Central avenue, Los Angeles.

FOLEY PILLS REACHED THE SORE SPOT

Mrs. Ellen Reighard, South Fork, Pa., writes: "I had been suffering with my kidneys and nothing seemed to touch the aching spot until I procured FOLEY PILLS, with wonderful results." FOLEY PILLS, a diuretic stimulant for the kidneys, gently and thoroughly flush and cleanse the kidneys and help to eliminate poisonous waste matter. Try a bottle today and you will be well pleased with the relief obtained. The use of FOLEY PILLS increases kidney activity.

Glendale Pharmacy, 638 East Broadway; Hub Pharmacy, Glendale and Colorado; Acacia Pharmacy, 922 South Glendale Avenue.—Advertisement.

6 1/2% Money for Homes in Glendale

The Mortgage Guarantee Company of Los Angeles is prepared at all times to consider applications for building loans, and new or re-placement loans on residential properties.

Loans of this type are made in amounts of \$2000 to \$8000 (not to exceed 50% of our appraisal values, for a term of fifteen years, secured by first trust deeds, and reducible at the rate of 3% semi-annually, with privilege of re-payment without bonus after three years.

Loans are also made on well-located courts, flats, apartment, and business properties.

Applications accompanied by the necessary information will be given prompt attention.

MORTGAGE Guarantee Company
626 South Spring Street
Los Angeles, Calif.

At LA CRESCENTA

LA CRESCENTA, Oct. 30.—Construction work on new homes in the Collins-Watkins subdivision on Montrose avenue began yesterday morning. These homes will differ from other homes in La Crescenta valley in that they are constructed of native stone.

Miss Ruth Barbour has arrived from Chicago and will be a guest for the winter of Mrs. Eloise Farmer of Altura avenue.

Ladies' Missionary society of the La Crescenta Community church will hold its regular business meeting in the parlors of the church tomorrow afternoon. All are invited to attend. The meeting is called at 2:30 p. m.

Verdugo Hills council of Boy Scouts will hold another of its popular bonfire picnics at Robinson's ranch, West Honolulu avenue Saturday night. Prominent speakers will be heard, games will be played, and the usual storytelling bee will be held. Supper will be served at 6:30 p. m. Guests are asked to bring their own sandwiches. Coffee and chocolate will be provided at the ranch. A program of sports will feature the afternoon. The public is invited. To reach the Robinson ranch drive out west on Honolulu avenue, past the reservoir to the first stone house on the south side of the road. Boys will be posted here to direct visitors.

La Crescenta Valley Parent-Teacher association reading circle met at the home of Mrs. Marian Tillery yesterday afternoon. "Little Hands" was finished. At the next meeting William McKeever's "Training the Boy" will be read alternately with "Training the Girl." November meetings will be held at the home of Mrs. Thomas S. Brown on West Montrose avenue. Members are asked to bring sandwiches. Tea and milk served. Meetings are opened at 11 o'clock, reading till 12, when lunch is served. Reading is resumed at 1 p. m. until 2 o'clock. Next week members will leave after the reading in a body for the La Crescenta schoolhouse, where the regular Parent-Teacher association meeting will be held. All members of the valley are invited.

Union Pacific Trains Make Schedule Change

Announcement is made through the Glendale Union Pacific office that, beginning Sunday November 2, all Union Pacific trains will arrive at and depart from the Arcade station, Los Angeles, occupied jointly with the Southern Pacific system. This depot is located at Fifth street and Central avenue, Los Angeles.

FOLEY PILLS REACHED THE SORE SPOT

Mrs. Ellen Reighard, South Fork, Pa., writes: "I had been suffering with my kidneys and nothing seemed to touch the aching spot until I procured FOLEY PILLS, with wonderful results." FOLEY PILLS, a diuretic stimulant for the kidneys, gently and thoroughly flush and cleanse the kidneys and help to eliminate poisonous waste matter. Try a bottle today and you will be well pleased with the relief obtained. The use of FOLEY PILLS increases kidney activity.

Glendale Pharmacy, 638 East Broadway; Hub Pharmacy, Glendale and Colorado; Acacia Pharmacy, 922 South Glendale Avenue.—Advertisement.

Meet me at the
Gateway
SAN FERNANDO ROAD & BRAND

TODAY
Friday and Saturday

Louis B. Mayer presents
Fred Niblo's Production

THE RED LILY
starring
RAMON NOVARRO

Written and Directed by
FRED NIBLO

Scenario by Bess Meredith

If you see a good picture advertised in the big city papers, you may be sure it will be shown at the Gateway Theater sooner or later.

Air mail service between Fairbanks and McGrath, Alaska, has cut the dog-team mail time from fifteen days to four hours.

FREE

One 40c Can of
STOVE ENAMEL
WITH EACH
Purchase of 50c or More

WALL PAPER AND PAINTS
at prices that will surprise
YOU
Yes, We Deliver

HOME DECORATING STORE
119 W. Harvard St.
1/2 block west of Pendroy's
Phone Glendale 3280
WE DO PAINTING AND PAPERING

Nota Bene!

124 W. Broadway

Wanted
Professional man to share reception room and office with a dentist, in Security Bank Bldg. Phone Glendale 894

JEWEL CITY WINDOW CLEANING SERVICE

Walls and Woodwork Washed Floors Waxed and Polished Guaranteed Service Office 521 Security Bank Bldg. Phone Glen. 2290

FRIDAY AND SATURDAY MONEY-RAISING SALE

A word to the Wise is Sufficient
Overstocked, we need the cash. Our loss your gain.

Curtain Material and Yard Goods

Reg. Price	Sale Price
19c Curtain Serim 13c	
25c Curtain Goods 18c	
39c Curtain Goods 27c	
49c Curtain Goods 38c	
59c Curtain Goods 46c	
69c Curtain Goods 52c	

Art Silk Curtain Drapery
Our regular \$1.00 and \$1.29 seller, only, **79c**

Stationery
Ink tablets, reg. value 10c. Sale **2 FOR 15c**
Ink tablets, reg. value 15c, Sale **11c**
Ink tablets, reg. value 25c, Sale **18c**
"Home Town" paper and envelopes, **10c**

Cocoa Door Mats
Heavy deep nap, closely woven, selected tough fibre, strong braided binding.
18x30 **\$1.15**
16x27 **.93**

TEASPOONS
Silveroid plate on hard white metal **2 for 5c**

FORKS
10c Silveroid Forks **5c**

Round Tin DECORATED BOXES
2 for 15c

Children's Grass Rockers
with arm and skirt, **\$2.98**

White enamel platters, slightly damaged, size 15x10 1/2, **15c Each**

DINNERWARE
5 beautiful open stock patterns, all pieces cut about 25%—for example:
Reg. Price Sale Price
.39 Bakers .29
.49 Bakers .37
.65 Bakers .49
\$1.85 Casseroles \$1.39
.39 Platters .29
.49 Platters .37
.69 Platters .52
.98 Platters .73
.18 Fruit Dishes .13
.39 Nappies .29
.49 Nappies .37
.65 Nappies .49

BLANKETS
Wool Mixed Single Robe Blankets
Here's a single blanket that has thickness and weight of a double blanket; cannot be bought for **\$3.98** less

Plaid, Mixed Wool and Cotton Double Blankets
Fast, distinct color combinations, fine wool and superior cotton; retains warmth; 3-inch matched mercerized binding; wonderful colors. Our regular \$6.49 seller for **\$5.39**

Extra Size and Heavy Double Cotton Blankets
Color, solid tan with pleasing end runs in pink or blue, soft uniform nap. Size 72x80—a bargain **\$3.89**

Men's Blue Work Shirts
Heavy chambray, double stitched. Remember, these were not made for a sale but made to stand the wear **59c**

Wonderful Leather Pillows
with beautiful verses, appropriate for dear friends or relatives, all verses artistically set in hand painted California fruits and flowers, including oranges and orange blossoms, California poppies, poinsettias, pepper berries. "Glendale, California," burnt on every pillow **\$4.95**
All Various Leather Novelties for Useful Xmas Gifts—

Chairs
for the little tots. Light grey and ivory enamel, arm sides, nursery back, **\$1.00**

FISHER'S VARIETY STORE
Glendale's Bargain Center
"OF COURSE"
210-212 EAST BROADWAY
Glendale's Bargain Center

The Fashion Center's GREATEST MONTH-END CLEARANCE SALE!

Featuring 97 Garments at One Price

COATS — SUITS — DRESSES — FURS

14 Garments	Were \$55.00
16 Garments	Were \$45.00
12 Garments	Were \$39.75
17 Garments	Were \$32.50
13 Garments	Were \$29.75
11 Garments	Were \$24.75
8 Garments	Were \$19.75
6 Garments	Were \$16.75

\$10.00

All at This One Price Tomorrow

FRIDAY — One Day Only — FRIDAY
See Them in Our Window Tonight

The Fashion Center
Incorporated
202 South Brand Blvd.