

雪月

二浦園



2132
45



きつげしきま
ひしそくしん
バ



月二浦團

句叙

人亦不^い遊^{あそ}あま^{あま}て^{あま}銀^{いね}あ^あお^おい
る^ゆふ^ああ^らふ^ふ霍^む旧^い界^か丁^{ちやう}因^{いん}を
身^み長^{ちやう}や^あお^つい^い觀^{かん}音^{おん}ハ^はき^き弁^{べん}
と^とあ^あら^らし^しめ^めし^しと^と虚^こあ^あて

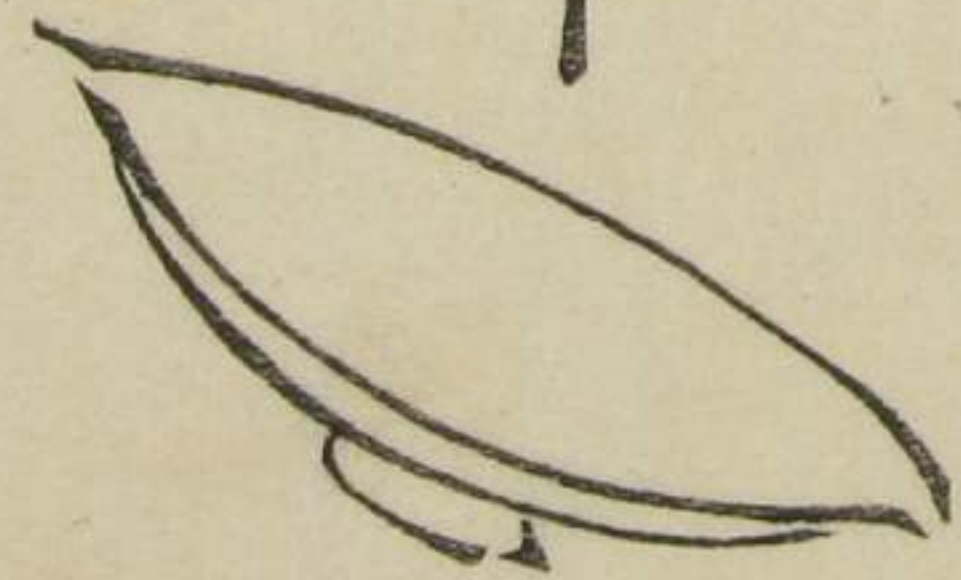
まの侍しんざい 是こゝ を思おもふく河が

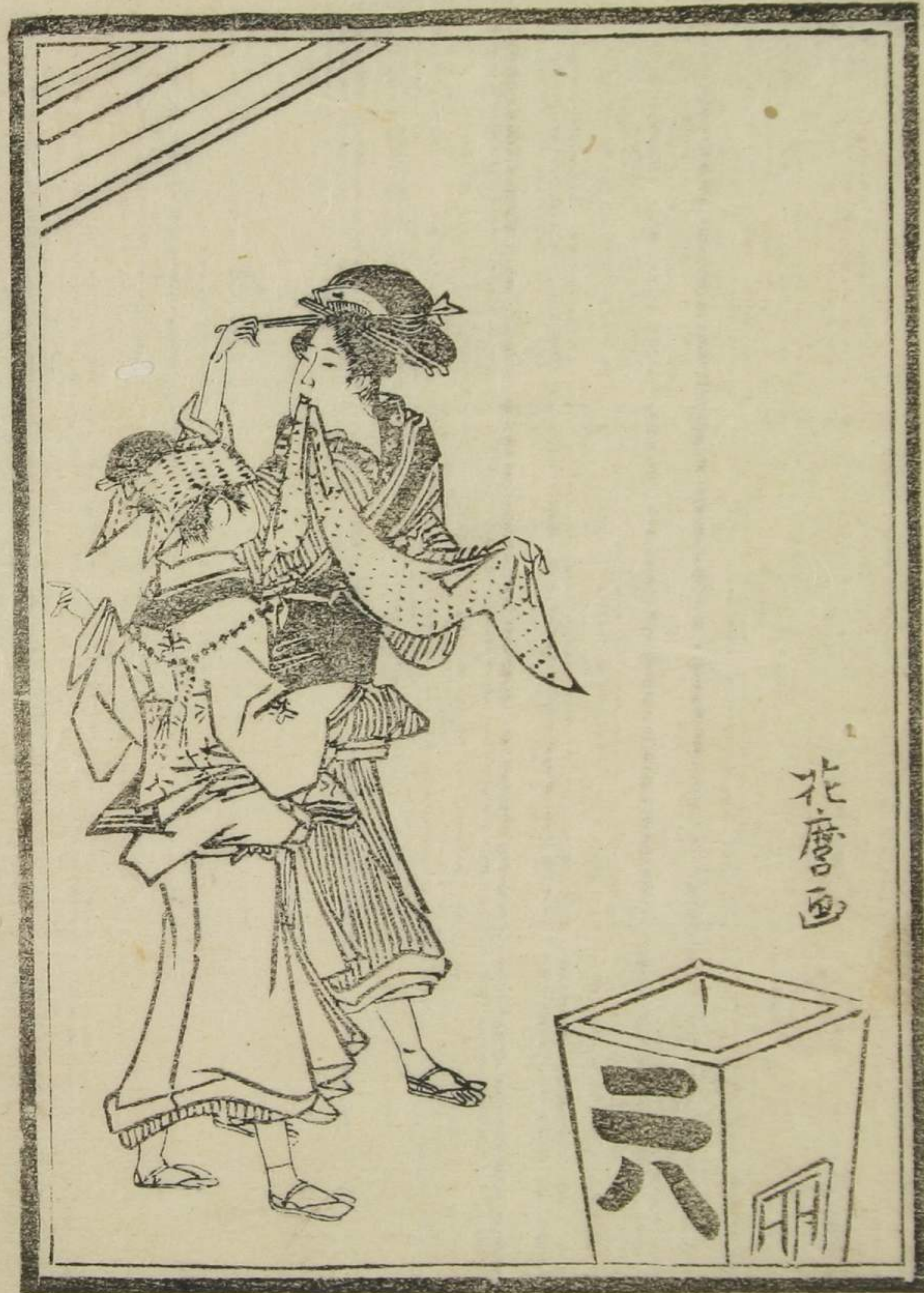
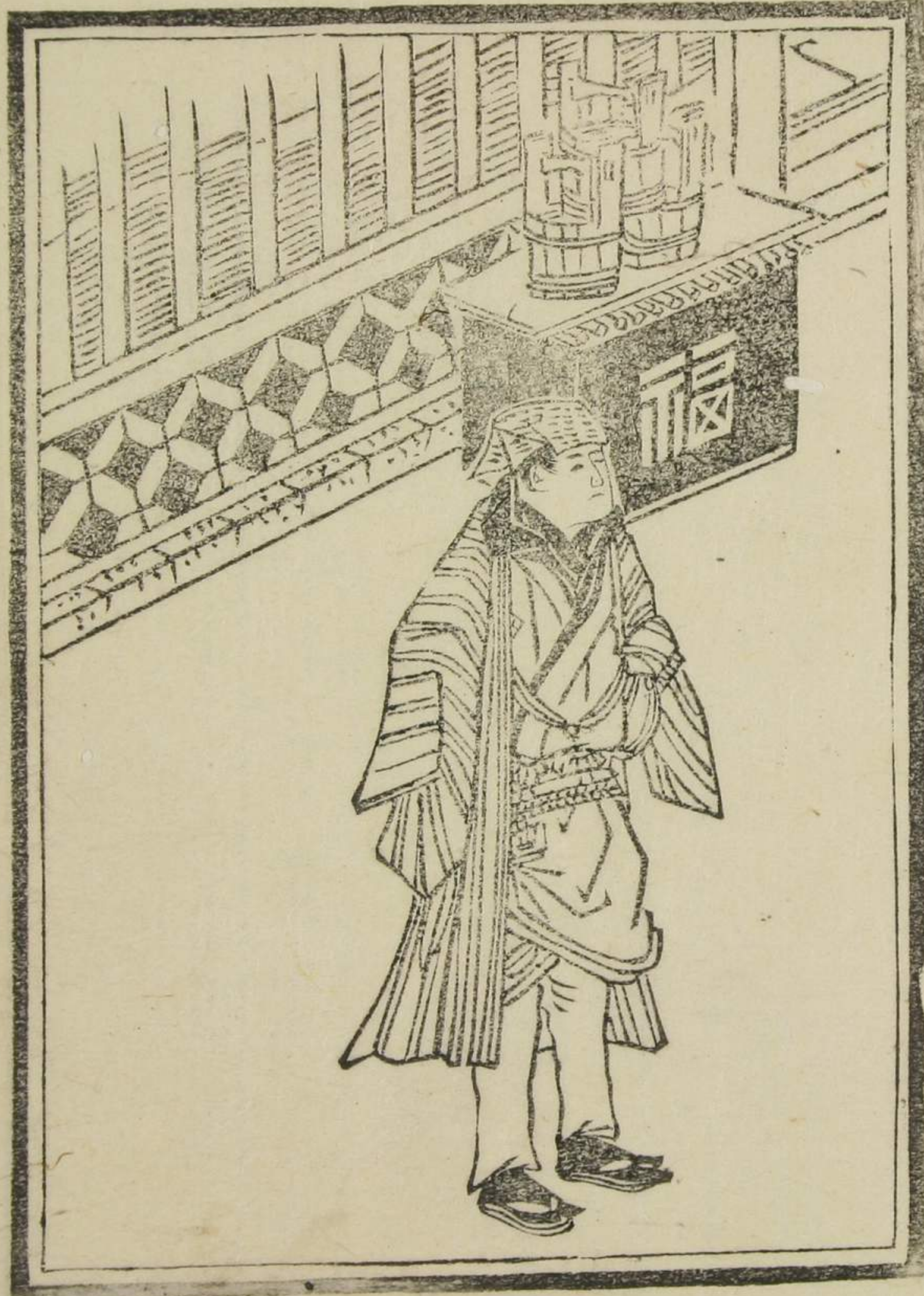
重おもく作つく 靈たま

盃さか 春はる

深川ふかがわのお茶ちや

醉よめ醒よめ水みづ吉きち作つく





Handwritten text in Arabic script, likely a religious or philosophical treatise. The text is written in a cursive style and includes several square boxes containing specific words or phrases. The text is arranged in approximately 12 lines, with some lines starting with a square box containing a letter or symbol.

Handwritten text in Arabic script, continuing the text from the previous page. It features several square boxes containing specific words or phrases, similar to the previous page. The text is arranged in approximately 10 lines, with some lines starting with a square box containing a letter or symbol.

1. K L M N O P Q R S T U V W X Y Z
 2. A B C D E F G H I J K L M N O P Q R S T U V W X Y Z
 3. A B C D E F G H I J K L M N O P Q R S T U V W X Y Z
 4. A B C D E F G H I J K L M N O P Q R S T U V W X Y Z
 5. A B C D E F G H I J K L M N O P Q R S T U V W X Y Z

1. A B C D E F G H I J K L M N O P Q R S T U V W X Y Z
 2. A B C D E F G H I J K L M N O P Q R S T U V W X Y Z
 3. A B C D E F G H I J K L M N O P Q R S T U V W X Y Z
 4. A B C D E F G H I J K L M N O P Q R S T U V W X Y Z
 5. A B C D E F G H I J K L M N O P Q R S T U V W X Y Z

Handwritten text in a cursive script, likely a historical document or manuscript. The text is written in a dark ink on aged paper. It features several square boxes containing characters, possibly serving as markers or section indicators. The script is dense and flowing, characteristic of historical cursive writing.

Handwritten text in a cursive script, similar to the left page. It also contains several square boxes with characters. The text is written in a dark ink on aged paper, showing signs of wear and discoloration. The script is consistent with the left page, suggesting a continuous document or a related text.

Handwritten text in a cursive script, likely a medieval manuscript. The text is written in a dark ink on aged paper. It consists of several lines of text, with some words enclosed in small square boxes. The script is highly stylized and difficult to decipher without a key. The text appears to be a list or a series of entries, possibly related to a historical or scientific record.

Handwritten text in a cursive script, similar to the one on the opposite page. It is also written in a dark ink on aged paper. The text is organized into several lines, with some words enclosed in small square boxes. The script is highly stylized and difficult to decipher without a key. The text appears to be a list or a series of entries, possibly related to a historical or scientific record.

Handwritten text in a cursive script, likely a form of shorthand or a specific dialect. The text is arranged in several lines, with some characters enclosed in small boxes. The script is dense and fluid, characteristic of historical shorthand systems.

Handwritten text in a cursive script, similar to the right page. It features several lines of text with characters in boxes. The script is highly stylized and appears to be a form of shorthand or a specific dialect. The text is arranged in several lines, with some characters enclosed in small boxes.

Handwritten text in a cursive script, likely a historical document or manuscript. The text is written in a dark ink on aged paper. It consists of approximately 12 lines of text. There are several square boxes or markers interspersed within the lines, possibly indicating specific words or sections. The script is highly stylized and characteristic of a specific historical period or region.

Handwritten text in a cursive script, likely a historical document or manuscript. The text is written in a dark ink on aged paper. It consists of approximately 12 lines of text. There are several square boxes or markers interspersed within the lines, possibly indicating specific words or sections. The script is highly stylized and characteristic of a specific historical period or region.

Handwritten text in a cursive script, likely a form of shorthand or a specific dialect. The text is arranged in several lines, with some characters enclosed in small square boxes. The script is dense and fluid, with many loops and flourishes. The boxes appear to contain specific characters or symbols that are repeated or used as markers throughout the text.

Handwritten text in a cursive script, similar to the one on the opposite page. It also consists of multiple lines of text with some characters boxed. The script is highly stylized and appears to be a form of shorthand or a specific dialect. The boxes are used to highlight certain characters or symbols, which may have specific meanings or functions within the text.

Handwritten text in a cursive script, likely a historical document or manuscript. The text is arranged in approximately 12 horizontal lines. The script is dense and characteristic of early modern European cursive. A small rectangular box is present on the left side of the page, containing a few lines of text.

Handwritten text in a cursive script, likely a historical document or manuscript. The text is arranged in approximately 12 horizontal lines. The script is dense and characteristic of early modern European cursive. A small rectangular box is present on the left side of the page, containing a few lines of text.

Handwritten text at the top of the right page, possibly a title or header.

10 年 一 年

Main body of handwritten text on the right page, consisting of several lines of cursive script.

Handwritten text on the left page, including a large initial character and several lines of cursive script.

Main body of handwritten text on the left page, continuing the cursive script from the right page.

Handwritten text in a cursive script, likely a historical document or manuscript. The text is written in a single column on the right page. Several words are enclosed in square boxes, possibly indicating specific terms or names. The script is dense and characteristic of a historical cursive style.

Handwritten text in a cursive script, likely a historical document or manuscript. The text is written in a single column on the left page. Several words are enclosed in square boxes, possibly indicating specific terms or names. The script is dense and characteristic of a historical cursive style.

Handwritten text in a cursive script, likely a continuation from the previous page. The text is dense and fills the right side of the page.

Handwritten title or section header, possibly indicating a specific chapter or section within the text.

Handwritten text line, appearing to be a continuation of the main body of text.

Handwritten text line, continuing the narrative or discourse.

Handwritten text line, showing the characteristic cursive style.

Handwritten text line, with some characters that appear to be larger or more prominent.

Handwritten text line, possibly a concluding sentence or a new paragraph start.

Handwritten text line, continuing the flow of the document.

Handwritten text line, showing the fluidity of the script.

Handwritten text line, with some decorative elements in the script.

Handwritten text line, maintaining the consistent cursive style.

Handwritten text line, possibly a transition between ideas.

Handwritten text line, showing the characteristic loops and flourishes.

Handwritten text line, continuing the text on the page.

Handwritten text line, possibly a final line or a section end.

Handwritten text in a cursive script, likely a list or a series of entries, enclosed in a rectangular border. The text is written in a fluid, connected style with various diacritics and symbols.

Handwritten text in a cursive script, similar to the right page, enclosed in a rectangular border. It appears to be a continuation of the text or a separate list. Several words or phrases are enclosed in small rectangular boxes, possibly indicating specific items or terms of interest.

Handwritten text in a cursive script, likely a historical document or manuscript. The text is arranged in approximately 12 lines. Several words are enclosed in small rectangular boxes, possibly indicating specific terms or names. The script is dense and characteristic of early modern European handwriting.

Handwritten text in a cursive script, likely a historical document or manuscript. The text is arranged in approximately 12 lines. Several words are enclosed in small rectangular boxes, possibly indicating specific terms or names. The script is dense and characteristic of early modern European handwriting.

Handwritten text in Arabic script, likely a religious or philosophical treatise. The text is arranged in vertical columns, reading from right to left. Several lines are enclosed in rectangular boxes, possibly indicating specific sections or headings. The script is a cursive style, characteristic of historical Arabic manuscripts.

Handwritten text in Arabic script, continuing the text from the previous page. The text is arranged in vertical columns, reading from right to left. A prominent heading is enclosed in a box at the top of the page, which appears to be the title 'الجمهورية' (The Republic). The script is consistent with the previous page, showing a cursive style.

Handwritten text in a cursive script, likely a historical document or manuscript. The text is written in a dark ink on aged paper. It consists of several lines of text, with some words or phrases enclosed in small rectangular boxes. The script is highly stylized and difficult to decipher without a key or context. The text appears to be a list or a series of entries, possibly related to a historical record or a collection of items.

Handwritten text in a cursive script, similar to the text on the opposite page. It is written in a dark ink on aged paper. The text is organized into several lines, with some words or phrases enclosed in small rectangular boxes. The script is highly stylized and difficult to decipher without a key or context. The text appears to be a list or a series of entries, possibly related to a historical record or a collection of items.

Handwritten text in a cursive script, likely a historical document or manuscript. The text is written in a dark ink on aged paper. It consists of approximately 12 lines of text, with some lines starting with a square symbol (possibly a section marker or a specific character). The script is dense and characteristic of early modern European cursive.

Handwritten text in a cursive script, likely a historical document or manuscript. The text is written in a dark ink on aged paper. It consists of approximately 12 lines of text, with some lines starting with a square symbol (possibly a section marker or a specific character). The script is dense and characteristic of early modern European cursive.

さし **吉** ちよお妙もくしんくちあふるさくしん
うんちんしんあふるさくちんあふるさくちん
のちんあふる **吉** あふるさくちんあふるさくちん
さくちんあふるさくちんあふるさくちん
困 ちんあふるさくちんあふるさくちん
らんちんあふるさくちんあふるさくちん
さくちんあふるさくちんあふるさくちん

跋

此二 **二** 南 **南** 電 **電** 汝 **汝** 戒 **戒** ちんあふる
あふるさくちんあふるさくちんあふるさくちん
ちんあふるさくちんあふるさくちんあふるさくちん
解 **解** ちんあふるさくちんあふるさくちんあふるさくちん
神 **神** ちんあふるさくちんあふるさくちんあふるさくちん

