

A developer's guide through the data jungle - getting you to Wikidata's data

Lydia Pintscher
Portfolio Lead for Wikidata

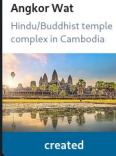
WIKIMANIA
KATOWICE

Wikidata gives you:

- Treasure trove of general purpose data
- Connections to other resources on and off the web
- Connections to the other Wikimedia projects

WIKIMANIA
KATOWICE





WIKIMANIA
KATOWICE

My Itinerary > Event > Floor 0

15 m

Würzburg Residence

Attraction and Castle

Formerly: Fürstbischöfliche Residenz Würzburg
 Fee: yes
[Wikipedia](#)

Opening Hours
 Currently closed, opens in 13 hours

	6:00 AM	12:00 PM	6:00 PM
Sun			
Mon			
Tue			
Wed			
Thu			
Fri			
Sat			

Contact
 Residenz...

Itinerary Plan Trip Passes & Programs

WikiFlix

Recently Edited

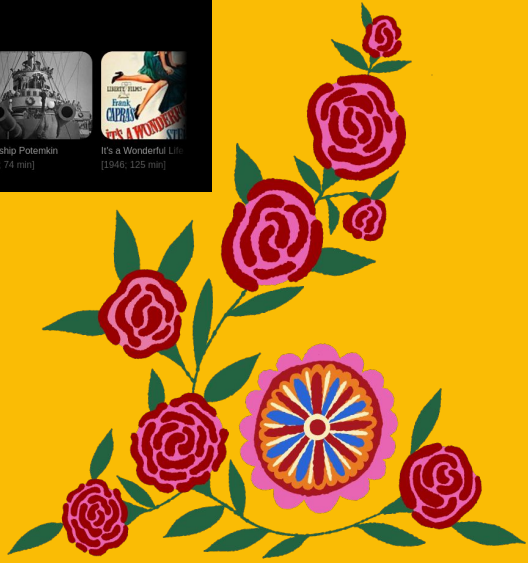
- The House I Live In [1945; 10 min]
- Silent Witnesses [1914; 65 min]
- The Artist's Dilemma [1901; 2 min]
- Queen Kelly [1928; 101 min]

Highly Ranked (# Wikipedia Articles)

- Battleship Potemkin [1925; 74 min]
- It's a Wonderful Life [1946; 125 min]
- Metropolis [1927; 153 min]
- The Kid [1921; 68 min]

Most Viewed Movies

- Metropolis [1927; 153 min]
- A Trip to the Moon [1902; 16 min]
- Battleship Potemkin [1925; 74 min]
- It's a Wonderful Life [1946; 125 min]





What do you need access to?

- Data from individual Entities
- Connections in the graph
- All data
- Changes

WIKIMANIA
KATOWICE

Data from individual Entities

- Linked Data Interface (read-only)
- MediaWiki Action API (read and edit)
- NEW: Wikibase REST API (read and edit)



Connections in the graph

- Wikidata Query Service
- Alternative endpoints, like QLever

WIKIMANIA
KATOWICE



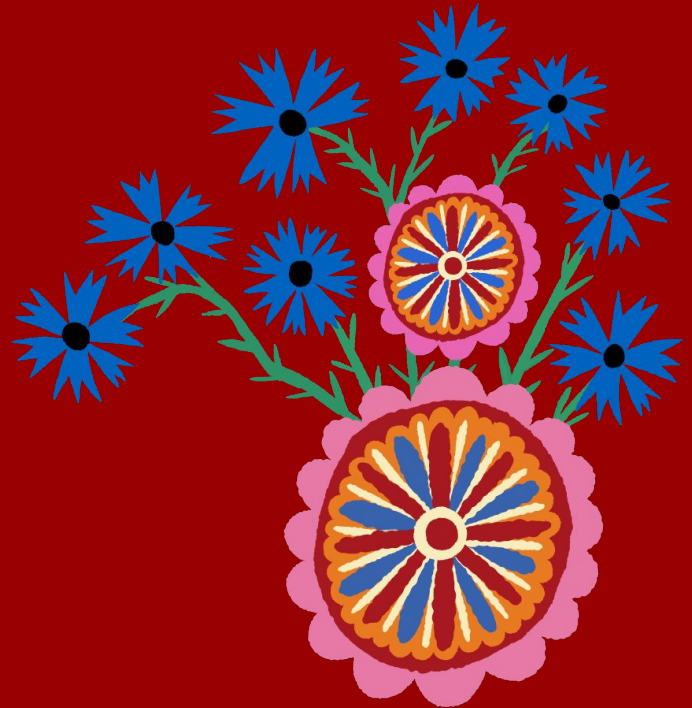
All data

- Dumps in different formats (RDF, JSON recommended)



Changes

- Recent changes stream



WIKIMANIA
KATOWICE



Wikidata For Developers

[Main page](#) [Resources](#) [FAQ](#) [Showcase](#) [Best practices](#) [Getting support](#)

Welcome to Wikidata's developer portal. Here you will find the information you need to build applications and services using Wikidata's data.

Wikidata's immense collection of data about the world is surprisingly easy to harness. Above and beyond its many millions of Items, Wikidata consolidates countless links to other data stores, sites and catalogs and is packed with confirming references. That constitutes a sizable proportion of everything humans know -- and it's all available for free reuse under CCO (public domain) licensing.

As a [knowledge graph](#), Wikidata offers its information in a structured form that can be easily queried and presented in multiple languages. Of course, Wikidata is also closely allied with the world's highest quality encyclopedia, Wikipedia. Best of all, it's powered by an [enthusiastic and active community](#), which means anyone can contribute to Wikidata -- including you.



Resources - Start here! [\[edit \]](#)

In the [Resources](#) section you will find useful resources to get you started using data from Wikidata in your application or service.



FAQ [\[edit \]](#)

In the [FAQ](#) you will find answers to frequently asked questions.



Showcase [\[edit \]](#)

The [Showcase](#) section has a collection of existing applications and services using data from Wikidata to give you inspiration.



Best Practices [\[edit \]](#)

[Best practices](#) provides you with an overview of best practices to follow when using data from Wikidata.



Getting Support [\[edit \]](#)

[Getting Support](#) lists places where you can get support if you run into issues using data from Wikidata.

More questions?

- Reach out to me:
[WD:Q18016466](https://www.wikidata.org/wiki/Q18016466)
- Developer portal:
[Wikidata:For developers](#)

WIKIMANIA
KATOWICE

