

## Historic, archived document

Do not assume content reflects current scientific knowledge, policies, or practices.



# VAUGHAN'S



## BOOK FOR



## FLORISTS.

### BUSINESS CONDITIONS.

**TERMS** on Florists' stock: To customers of approved credit, 60 DAYS, except on certain CASH items. Special 3 per cent. discount for cash in Ten. days (from these list prices only), not from the "Special" quotations and excepting NET CASH ITEMS.

**New Accounts:** New customers, if not already well known, will please send cash with first order and if desiring to open an account send good references, property statement or other information concerning their commercial standing as they may be able to furnish. This will avoid delay which is often very annoying. We cannot be expected to ship goods to those whose good standing is not known to us. For references please name bankers, wholesale merchants or other well-known business men with whom you have had dealings—such information will be held in confidence.

**Our Responsibility:** While we always aim to have the best SEEDS, BULBS AND PLANTS which each season affords from reliable houses, we cannot and do not guarantee any of them to flower or produce a crop of flowers at the prices given, nor will we be responsible for the crop. We assume our customers to be acquainted with these conditions and if the stock is not accepted on such conditions it must be returned at once and any money paid will be refunded. Live plants and like perishable stock should be sent by express; we cannot assume any responsibility whatever for safe arrival when such plants are ordered by freight by the purchaser. The remedy for loss must lie between the buyer and the Railroad Company, but we will gladly render all the aid we can.

We prefer not to send goods C. O. D., but when wanted in that manner some money must accompany order. PERISHABLE stock, plants, etc., are POSITIVELY NOT SENT C. O. D.

### LOW EXPRESS RATES ON PLANTS.

We ship plants by all express lines to any part of the country. Under the ruling of the leading express companies plants packed in closed boxes or baskets are now being carried at the "GENERAL SPECIAL" rate, which means a reduction of 20 per cent. from the regular merchandise rate. Boxes weighing less than 100 pounds are charged at pound rates, but the minimum charge is 45c. For example, if the general rate is \$5.00 per 100 lbs., a box containing 25 lbs. will cost \$1.00, which is a saving of 25c.

OUR MOTTO "ALL FLORISTS' STOCK IN SEASON."



New Giant Hyacinth-Flowered Candytuft.



Type of our "INTERNATIONAL MIXTURE."



New Hibiscus 'PEACHBLOW.'

J. C. VAUGHAN.  
C. CROPP.

# Vaughan's Seed Store

NEW YORK, 14 Barclay Street.

GREENHOUSES, WESTERN SPRINGS, ILLINOIS.

CHICAGO, 84 & 86 Randolph Street.

# SPRING BULBS FOR FLORISTS' **TRADE**

We are Headquarters for all Bulbs for Seedsmen, Nurserymen and Florists.

**PROMPT SHIPMENT.**

We intend to get action on your orders. If they are not promptly heard from, wire us at our expense.

Special Low Prices quoted for quantities. Send us a list of your probable needs for estimate.		Per Doz.	Per 100
<b>AMARYLLIS.</b>			
Johnsonii. Clear crimson, striped white; one of the best; fine bulbs .....		\$3.25	\$22.00
Formosissima. Deep velvety crimson.....		.75	4.00
Equestre. Salmon pink, pure white blotch .....		.85	4.50
Vittata Hybrids. Strong bulbs, California grown.....		5.00	
Belladonna Major .....		2.00	15.00
<b>APIOS TUBEROSA.</b> A good hardy climber, closely resembling the common Wistaria in vine and foliage, with clusters of large bright purple flowers.....			
		.30	1.35
<b>CINNAMON VINE.</b> Malling size.....			
		.35	2.25
<b>CINNAMON VINE.</b> Extra strong.....			
		.50	2.75
<b>CRINUM KIRKII.</b> First size.....			
		2.00	14.00
<b>CRINUM KIRKII.</b> Extra mammoth.....			
		4.75	
<b>HYACINTHUS CANDICANS.</b> Strong.....			
		.35	2.25
<b>MADEIRA VINE.</b> Strong tubers. (500 at \$1.25 per 100).....			
		.30	1.50
<b>OXALIS, DEPPEI ROSEA.</b> Pink.....			
		.10	.35
<b>OXALIS, LASIANDRA.</b> Crimson.....			
		.10	.35
<b>RESURRECTION PLANT.</b> .....			
		.50	3.50
<b>RICHARDIA ALBA MACULATA.</b> Spotted Calla; choice stock.....			
		.50	3.50



LILIUM SPECIOSUM RUBRUM.

## GLOXINIAS.

Our strain is unsurpassed. It is composed of Erecta and Horizontal sorts, combining the greatest variety of colors and markings. Not to be confounded with the common dark-colored varieties which are offered at low prices.

Per doz..... \$0.85  
Per 100..... 4.50

## BEGONIAS.

Tuberous Rooted. Giant Flowering Varieties.

	Doz.	100
Single White.....	\$0.70	\$4.00
Single Yellow.....	.70	4.00
Single Scarlet.....	.70	4.00
Single Pink.....	.70	4.00
Single Mixed.....	.70	4.00
Double White.....	1.25	8.00
Double Yellow.....	1.25	8.00
Double Scarlet.....	1.25	8.00
Double Pink.....	1.25	8.00
Double Mixed.....	1.25	8.00



CALADIUM ESCULENTUM OR "ELEPHANT'S EARS."

## LILY OF THE VALLEY.

Knowing that florists have call from private buyers for Valley for out-door planting, we have imported for this purpose a quantity of extra strong clumps.

Each, 30c.; doz., \$3.00; 100, \$22.00.

## DIELYTRA SPECTABILIS.

(SCARCE)

(Bleeding Heart.)

The "old-time" florists' favorite and one of the most profitable of plants for pot growing. Strong roots.

Per doz., \$1.35; per 100, \$10.00.

## IPOMEEA PANDURATA.

(Day-Blooming Moon Flower.)

Perfectly hardy and increase in size each season. Produces luxuriant compact foliage and quantities of beautiful white flowers with a purple throat.

Per doz., 75c.; per 100, \$4.50.

## IPOMEEA MEXICANA.

(A vine that will grow and thrive under most any conditions.)

A wonderfully quick grower and good bloomer. If planted in a shaded situation the blooms will remain open all day. Flowers beautiful rosy crimson.

Per doz., \$1.85; per 100, \$13.50.

## CALADIUM or Elephant's Ears. CURED AND SOUND BULBS.

	Each	Doz.	100
<b>C. ESCULENTUM.</b> 5 to 7 inches in circumference .....	\$0.05	\$0.50	\$3.00
" " 7 to 9 " " " .....	.07	.75	4.50
" " 9 to 12 " " " .....	.15	1.15	8.00
" " 12 inches and up.....	.25	2.00	15.00

## LILIES

We re-pack our imported Japan Lilies in charcoal, thus preventing rot. KEEP THIS FACT IN MIND when comparing prices. This extra care PAYS THE BUYER. PRICES BELOW SUBJECT TO CHANGE WITHOUT NOTICE.

SPECIOSUM SORTS					
<b>Auratum.</b>	Doz.	100	<b>Album.</b>		
7 to 9 inches.....	\$0.90	\$5.25	Pure white, very fragrant.		
9 to 11 inches.....	1.50	9.00	7 to 9 inches.....	\$1.00	\$5.50
11 to 12 inches.....	2.50	18.00	9 to 11 inches.....	1.35	7.50
Write for prices per 1000.			11 to 12 inches.....	1.65	9.50
<b>Rubrum or Roseum.</b>			Write for prices per 1000.		
7 to 9 inches.....	0.90	5.25	<b>Melpomene.</b>		
9 to 11 inches.....	1.40	8.00	7 to 9 inches.....	1.00	5.75
11 to 13 inches.....	1.75	10.50	9 to 11 inches.....	1.40	8.25
<b>BURBANK.</b> See retail catalogue for description.....		4.00			
<b>CANADENSE.</b> Drooping, bell-shaped, yellow flowers.....		.80			4.25
<b>ELEGANS (Thunbergianum).</b> Blooms in June; mixed colors.....		1.10			6.00
<b>LONGIFLORUM.</b> Pure white, medium size bulbs.....		1.15			7.00
<b>SUPERBUM.</b> Orange, with purple spots.....		.80			4.25
<b>TENUIFOLIUM (Siberian Lily).</b> One of the earliest and hardest lilies; flowers scarlet.....		2.00			11.00
<b>TIGRINUM SPLENDENS (Improved Single Tiger Lily)</b> .....		.50			3.00
<b>TIGRINUM (Tiger Lily).</b> Single; orange red, spotted black.....		.40			2.75
<b>TIGRINUM FL. PL. (Double Tiger Lily)</b> .....		.65			4.00
<b>UMBELLATUM</b> .....		1.50			8.00
<b>WALLACEL.</b> Bright apricot color.....		1.10			6.00
<b>WASHINGTONIANUM.</b> .....		1.50			10.00



LILY BURBANK.

# Vaughan's Gladiolus

**STRICTLY FIRST SIZE**  
**BULBS**

**Large Flowering**

**Brilliant Colors**

We are large growers of these bulbs and supply only varieties and mixtures that we know are the best to be obtained and such as will give complete satisfaction. We would call special attention to our Vaughan's Florists' and XXX Mixtures; these are what every florist should have for cut-flower purposes, being made up from choice named kinds of white and light colors and containing many choice seedlings.

**NAMED VARIETIES.**

Having large quantities of each of the following varieties, we offer them at special low prices:

	PER DOZ.	100	1,000
Madame Moneret.—Delicate rose .....	\$0.25	\$1.10	\$ 8.50
Brenchleyensis.—Scarlet vermilion .....	.20	.85	7.00
Isaac Buchanan.—Best yellow.....	.50	3.00	26.00
Shakespeare.—White, tinged rose, rosy blotch.....	1.00	6.50	.....
La Candeur.—White, striped violet.....	1.20	8.00	.....
John Bull.—White, tinged sulphur.....	.35	2.15	19.00
Napoleon III.—Scarlet, striped white.....	.25	1.00	8.00
Ceres.—Pure white, rosy blotch.....	.25	1.00	8.00
Eugene Scribe.—Large, fine rosy color.....	1.00	6.75	.....
Angele.—White, very showy.....	.....	5.50	.....
Meyerbeer.—Brilliant scarlet, flamed with vermilion .....	.....	8.00	.....
May.—A large, straight, full, double spike of bloom with well opened flowers, white ground flamed with wide feathery bands of bright rose. Forces nearly white.....	.....	5.00	.....
Snow White.—Nearly the entire flower is a perfect paper white, of wonderful vigorous growth, giving an average of three stems to each bulb; many have five or more .....	1.75	11.00	.....



GLADIOLUS, WHITE LADY.

## GLADIOLUS "WHITE LADY."

See Illustration Above.

This is the only pure white Gladiolus in existence and might be compared to a number of snow white Trumpet Lilies placed closely together on a strong, graceful stem. The "White Lady" should not be compared with the variety Snow White, which usually shows a strong reddish cast, and as a matter of fact is not to be classed as a pure white. Supply limited. Each, 75c.; 3 for \$2.00; per doz., \$7.50.

## The "World's Best" Gladiolus. A Grand New Mixture.

All New Hybrid Classes combined. Crosses of the Best Older Kinds, with all the New Ones.

These bulbs are from the choicest private collections ever made in this country, and have been gathered together from all the best sources. An expert plantsman, who has seen this combination in bloom during the season, says:

"I doubt if there was ever such a splendid lot of hybrids offered before. These seedlings are in many respects superior to the best named sorts. They will be a credit to any establishment."

**THE "WORLD'S BEST" MIXTURE,**

Per doz., 40c.; per 100, \$2.75; per 1,000, \$25.00; 2,000 for \$45.00.

## VAUGHAN'S GLADIOLUS MIXTURES.

First-Class Varieties, Large Flowers, Handsome Colors.

No less than 25 at the 100 rate, and 250 at the 1,000 rate.

	PER 100	1,000
Extra Fine Mixed.—First size.....	\$1.50	\$10.00
Vaughan's Seedlings.....	1.50	12.00
XXX Florists' Mixture.—Light and white.....	1.85	16.00
Superfine Mixture.—Light and white, part from named sorts.....	2.25	18.00
Vaughan's Florists' Mixture.—Extra light and white (very fine).....	3.50	30.00
Childsii, Mixed.—Of the famous Leichlin class improved by Mr. E. V. Hallock, grand in size and color.....	3.50	25.00
Lemoinei.—Finest Mixture.....	1.75	15.00
Scarlet and Red Shades Mixed.....	1.25	8.00
Pink Shades Mixed.....	1.50	11.00
Yellow Shades Mixed.....	2.75	24.00
Striped and Variegated Mixed.....	2.15	19.00

**MONEY SAVING GLADIOLUS MIXTURE.**

We purchased the entire stock of a large grower at "closing out" prices and can offer in them, the best bargain ever made. The range of color is splendid; from deepest red to light pink, white and yellow. The bulbs are all of blooming size, and the price gives you such a quantity for little money that it will pay you to grow a quantity of them for cut-flowers. Per 100, 85c.; Per 1,000, \$7.00; Per 2,000, \$13.00; Per 5,000, \$30.00.

## Vaughan's Tuberose

Owing to the fact of the true strain of "Excelsior Pearl" Tuberose being extremely scarce this year, there has been thrown on the market large quantities of the "common" variety, which is quite inferior, both as regards size of flower and freedom of bloom. Our stock of "Excelsior Pearl" has been grown from the original "Hallock" strain and can be depended upon to give satisfaction to the florist and private grower as well.

**Beware of stock that is offered at low prices.**

Prices subject to advance after March 10th, owing to storage and handling expenses.

Excelsior Pearl.—First-class, in Chicago, 100 for \$1.00; 250 for \$2.00; 500 for \$3.90; 1,000 for \$7.50; 2,000 for \$14.00.

Excelsior Pearl.—First-class, in New York, 5 per cent. less.

PER 100 1,000

Excelsior Pearl.—Medium size, in Chicago..\$0.75 \$ 5.00

Excelsior Pearl.—Medium size, in New York .70 4.00

Tall Double.—First size.. 1.00 8.00

Single.—First size..... 1.35 11.00

Armstrong's Ever-Blooming..... 4.75 .....

Variegated Leaved..... 1.35 11.00

Albino..... 1.20 9.00



TUBEROSE, EXCELSIOR DWARF PEARL.



**Don't Fail To try The New Gladiolus "White Lady."**



## ....ROSE NOVELTIES FOR 1900....



LIBERTY ROSE.

### The Grand New Rose "LIBERTY"

Never has Nature yielded to the painstaking hybridist and plant raiser a more beautiful or more satisfying color than that seen in the new hybrid Tea Rose "Liberty," which to-day marks the limit of glorious deep, yet bright coloration in a family by no means deficient in warm rich hues of crimson red. Most nearly approached by Meteor in color, this new comer surpasses that standard variety in purity, being without the tendency to blacken that Meteor exhibits, and also the blue cast sometimes seen on the fully expanded petal of Meteor has not been detected in any degree whatever upon a single one of many critically examined blossoms of Liberty. To the practical grower, too, this novelty will surely appeal, because of the greater ease of cultivation, in that it does not exact a temperature in excess of that generally accorded to other roses when grown under glass. There can be little doubt but that "Liberty" is destined to rapidly become the one dark flowered rose for both commercial and private uses. As to the behavior of the plants in the hands of the grower, we had presented to our notice by Mr. Ernest G. Asmus, of West Hoboken, N. J., figures which showed that from September up to March 8th, each plant in his 100x16 ft. house has yielded an average of 26½ blooms. An inspection of the growing plants satisfies us as to the vigor and vitality of "Liberty." It has every evidence, too, of being a continuous bloomer. In habit the plant is erect growing, making good wood of considerable length and rigidity, and displaying a strong inclination to make a compact bush. The foliage is of moderate size, with seven roundish leaflets, very shapely and evenly serrate on the margins. Spines are moderately numerous, straight and irregularly scattered on the stems.

We are booking orders now for delivery in March next. Stock grown by Mr. Ernest G. Asmus, the well known rose grower. Prices as follows:

Own rooted plants from 2½ inch pots.		
1 plant.....		\$ .75
12 "		.60
25 "		.50
50 "	and over and less than 100.....	.30
100 "	and up to 1000.....	.25
1000 "	and over.....	.20
3 inch pot plants 5c. each additional.		

Grafted plants from 2½ inch pots.		
1 plant.....		\$1.00
12 "		.75
25 "		.60
50 "	or more and less than 100.....	.40
100 "	and up to 1000.....	.30
1000 "	or more.....	.25
3 inch pot plants 5c. each additional.		

These prices hold good only for the United States and Canada.

### Grand New Rambler Rose HELENE.

Imported by us from Germany two years ago, and after a thorough trial we regard it as an improvement upon the Crimson Rambler, of which it is a seedling. In growth and foliage it resembles Crimson Rambler, sending up strong canes 8 to 10 feet in one season. We find it is less subject to mildew. It is perfectly hardy and will stand the severest winter unprotected. Its flowers are larger than Crimson Rambler, almost double, and of excellent substance, remaining in perfection on the bush for weeks. The flowers are borne in large clusters, a well formed bush producing them in amazing profusion, each cluster containing 30 to 40 well-formed flowers. The color is a pure soft rose, almost blush. Base of petals yellowish white.

2½ inch pot plants, each, 20c.; 12 for \$2.00; per 100, \$15.00.

### New HARDY ROSE PRINCESS OF NAPLES.

A cross between Captain Christy and La France. The plants grow very solid and compact, and stronger than those of Captain Christy; have more spines and very dense, healthy, large, dark green foliage. It flowers very freely and easily, and keeps on flowering for a long time. The flowers are of good form, solid, but nevertheless of very loose, graceful appearance; color, delicate, satiny pink. The fragrance is excellent; better, stronger and more agreeable than that of La France. The whole plant is covered with flowers in the main flowering season. The fact that the plant grows so easily makes it especially suitable for early and late forcing and cut-flower purposes, also for pot plants and outdoor work.

Each, 15c.; per doz., \$1.50; per 100, \$10.00.

3 inch pots, strong stock, each, 25c.; per doz., \$2.50.

### The New Rose Evergreen Gem.

The most remarkable achievement and improvement of a new and distinct type of Hardy Roses that has been made for a generation. The growth is remarkable for its freedom. A single plant 4 years old, covered a space of 240 square feet, with long shoots and completely covering the ground with its bright, glossy foliage, which is not only evergreen, but growing during mild weather in winter. Flowers are produced singly on stems and in color a yellow buff in bud, opening to almost pure white 2 to 3 inches in diameter, perfectly double and of a delightful sweet-brier fragrance. This rose will be found most valuable for cemetery planting as well as landscape work.

Each, 15c.; 12 for \$1.50; per 100, \$10.00.

### L'INNOCENCE

May be called the White Madame Caroline Testout, of which it is an offspring. It is a strong, symmetrical grower. Foliage large and tough; flowers large, full, deep and double; globular in form; color bright snowy white. The flowers are borne with great freedom upon long stems, hence this variety is well suited for forcing.

2½ inch pots, each, 15c.; 12 for \$1.25; per 100, \$10.00.

For Standard Greenhouse Forcing Roses and Summer Blooming Roses see Page 13.



EVERGREEN GEM.



HELENE

# New Pink Hibiscus PEACHBLOW



HIBISCUS PEACHBLOW.

This is one of the finest plant novelties offered in recent years. It is a "sport" from the double red Hibiscus Rosea-Sinensis; the flowers are double and from four to five inches in diameter; of a charming, rich, clear pink color, with a small deep crimson center; an entirely new and most beautiful shade; it blooms abundantly and continuously even on small plants during the entire summer and fall months; may be easily wintered in greenhouse or dwelling. Large plants, two or three years old make a magnificent show.

We are confident it will give entire satisfaction to all who grow it, either in pots, or plants out in the Garden. It is also a good winter bloomer in the greenhouse or sunny window. We offer 3 sizes:

Strong plants from 2½ inch pots, each 20c.; 6 for \$1.00; 12 for \$1.50; 100 for \$10.00.

Strong plants from 5 inch pots.....each 75c.; doz. \$8.00

Extra strong plants from 6 inch pots, each \$1.00; doz. 10.00.

## Asparagus Sprengeri.

This new Asparagus has proven to be useful in a variety of ways; especially so as a pot plant for decorative purposes, or for planting in ferneries or hanging baskets. It grows freely the whole year round. The plant is very vigorous, producing sprays 4 to 5 feet long of fresh green feathery foliage, which are handsome for bouquets, wreaths or sprays, and remain perfect for weeks after cutting. It can be grown easily planted out on benches, in a night temperature of 60 degrees. Both plants and cut sprays meet ready sale and, all in all, it is one of the most profitable plants we have ever grown. No up-to-date Florist can afford to be without this new and free growing Asparagus. We have a grand stock.



CHENILLE PLANT.

	Per doz.	100
2½ inch pots.....	\$ .75.....	\$ 5.00
3 " " .....	1.00.....	8.00
4 " " .....	2.00.....	15.00
5 " " .....	3.00.....	25.00
6 inch wire hanging baskets, well filled with sprays.....	each 50c.	
8 inch wire hanging baskets, well filled with sprays.....	each 75c.	

## Asparagus Plumosus Nanus.

A grand variety for cutting, either in strong strings like Smilax, or divided in smaller pieces for use as Fern fronds. It is also used extensively for filling Fern pans, for which purpose it has proven most valuable, and is now grown by everybody. We offer a fine lot of thrifty, young plants.

	Per doz.	100
2½ inch pots.....	\$ .75.....	\$ 6.00
3 " " .....	1.00.....	8.00
4 " " .....	2.00.....	15.00
5 " " .....	4.00.....	30.00

## CHENILLE PLANT. *Acalypha Sanderi.*

This is the most distinct and striking ornamental plant introduced in many years. It is a native of the South Sea Islands. Is of easy and rapid growth and blooms continuously. The plant is of branching habit, healthy foliage and the flowers are most remarkable. The flower spikes, which appear in pairs from the axils of the leaves, grow from two to three feet in length. They are of bright crimson color, drooping and mixing among the green foliage with charming effect. It will be extensively used as a pot and window plant everywhere. We find it grows excellent planted out; should be planted away from other plants or will lose the effect if crowded. Can be lifted in the Fall and will make a fine show in the house during the winter. We offer strong, well-established plants, showing flower spikes.

From 2½ inch pots.....	doz. \$1.00; per 100, \$8.00
" 3 " " .....	doz. 1.50; per 100, 12.00
" 4 " " showing flower spikes.....	each 30c.; doz. 3.00
" 5 " " in flower.....	each 50c.; doz. 5.00

## 2 New Winter

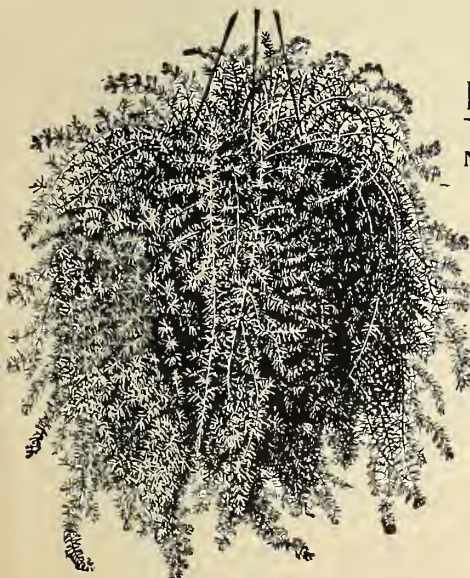
### Flowering Begonias.

#### New Winter-Flowering Begonia, Gloire-de Lorraine.

This is undoubtedly the greatest gem in winter-flowering Begonias yet introduced, and is certain to become a popular favorite. It grows from 10 to 12 inches high, forming naturally graceful, bushy specimens, which from October to April are completely hidden in soft, rosy pink flowers. We offer young plants from 2 inch pots, stock limited, each 30c.; per doz. \$3.00.

#### New Begonia Haageana Erecta.

A grand winter flowering sort with large, hairy leaves. A very free bloomer sending up long, erect sprays of extra large flowers of a light pink. This will be found a grand Begonia in every respect. Each 15c.; 12 for \$1.50.



ASPARAGUS SPRENGERI.



BEGONIA GLOIRE DE LORRAINE.



# BOSTON FERNS

*Nephrolepis Exaltata*  
*Bostoniensis* . . .

This popular fern has proven one of the best decorative plants of recent introduction. It is a rapid grower, works up fast and is a good seller. The distinctive feature of this beautiful fern is, the fronds are much larger than the common sword fern, and do not stand so stiff, but droop over in a graceful manner. Excellent for making large specimen plants. Every florist should grow the Boston Fern. We have the finest stock in the West. The plants we offer are strong, lushy and not over-potted.

	Per doz.	Per 100
Strong plants from 2 inch pots	\$ .50	\$ 4.00
" " 2½ "	.75	5.00
" " 3 "	1.25	10.00
" " 4 "	3.00	25.00
" " 5 "	5.00	40.00
" " 6 inch pans	6.00	50.00
" " 7 "	9.00	70.00
" " 8 "	12.00	90.00
" " 9 "	each, \$1.50	18.00
" " 10 "	2.00	24.00
" " 12 "		3.00 to 5.00 each

We can also furnish BOSTON FERNS in HANGING BASKETS, well-established and full, of following sizes:

	Each	Doz.
Wire Baskets, 6 inch diameter	\$ .75	\$ 8.00
" " 8 "	1.25	12.00
" " 12 "	3.00	30.00

## Nephrolepis Washingtoniensis.

There is no other fern of its class in cultivation, so distinct and majestic. The fronds are remarkably thick and metallic in appearance; grow 8 feet and more in height and arch gracefully; have a width of 12 to 15 inches on fully developed fronds. The leaves, although very hard, are not at all brittle, and will stand exposure better than any other fern. This fern is useful only when full grown, never in a 3 or 6 inch pot, but as a specimen plant from 6 to 12 inches it is simply grand, and will be used largely as a decorative plant.

Price, 2½ inch pot plants, each, 35c.; 3 for \$1.00; doz., \$3.00.  
each, 50c.; doz., \$5.00.

FOR OTHER FERNS SEE PAGE 14.



BOSTON FERN.

## NEW SALVIA "ST. LOUIS."

Originated by Mr. James Gurney, Supt. of Tower Grove Park, who sent us a few plants to try last spring, and we found it a great improvement over any Salvia we had ever grown; beautiful flowers spikes fully 15 to 18 inches long and 3 inches in diameter; earlier bloomer, being one mass of scarlet from July to frost. Height 3 feet. Each, 15c.; doz., \$1.00; per 100, \$6.00.

## NEW DWARF SALVIA ALFRED RAGUENEAU.

Remarkable for its dwarf and compact growth and abundance of magnificent spikes of red flowers, never attaining a height of over 18 inches. Each, 10c.; doz., 75c.; per 100, \$5.00.

## SALVIA CLARA BEDMAN.

A dwarf variety about 2 feet in height; free flower habit. Doz., 60c.; per 100, \$4.00.

## JAPAN MAPLES. POT GROWN FOR FORCING.

Plants 12-18 inches high.

Few plants when grown in pots make a grander show than these Japan Maples with their highly colored leaves. We offer the following named sorts:

Atro-Purpureum, Atro Dissectum, Roseum Marginatum, } Each, 75c.; doz., \$7.50.  
Aurea (Yellow), Rubrifolium, Felicifolium, }

## PRIMULA FORBESI. (Baby Primrose.)

A miniature Primula, after the order of Obconica, but blooms more freely. Small plants commencing to bloom when in 2 inch pot; 4 or 5 inch plants carrying from 20 to 25 flower spikes. The color is a pale lavender. The foliage is delicate and graceful, somewhat fern-like in appearance. As a cut flower it finds ready sale and is profitable to grow as such. 2 inch, per doz., 50c.; per 100, \$4.00. 3 inch pots, per doz., 75c.; per 100, \$6.00.

## THE NEW DOUBLE VIOLET "IMPERIAL."

Originated with a noted Violet specialist of Massachusetts, who claims it is entirely free from all disease and a remarkably strong and vigorous grower. In fact, a great improvement over Marie Louise; flowers larger and more double; longer stems, better color. We have grown it through the summer and fall, and have found it entirely free from disease. Our young stock is in fine shape in 2 inch pots. Per doz., 75c.; per 100, \$6.00.



VIOLET PRINCESS OF WALES.

## Violet Princess of Wales.

After another year's trial this Violet is admitted by most all growers to be the best single Violet grown. The flowers are very large and a true blue; stems 10 to 12 inches long; a free bloomer and healthy grower. A great improvement over California. Fine healthy stock from 2 inch pots. Per doz., 60c.; per 100, \$4.50.

For other Violets see Page 15.



NEW LARGE FLOWERING HARDY PHLOX.

## New Hardy Phlox

Every Florist should have this Collection.



Varieties offered here are entirely new and distinct from the old fashioned Hardy Phlox, both in dwarfness of growth, size and color of flowers. They bloom most abundantly from July until late in Autumn. Flower heads measure from 7 to 9 inches across and comprise all shades of color from vermilion to white.

**Fantome.**—Extra large flower center pure white, surrounded with violet.

**Fiancee.**—Extra large flowers, of a pure white. Very fine.

**Lumineux.**—Flowers very large, of a rosy carmine; center rosy white.

**Madeleine Leturque.**—Medium sized flowers on extra large heads. Color a beautiful shade of Indian rose, shading on outer edge to white. New color.

**Montaguard.**—Large round flowers of a pure deep crimson, and most showy Phlox we have.

**Cyrano.**—Very large flowers, bright purple shading to lilac; very dwarf. Extra fine.

**Japonais.**—Dwarf, bushy grower, large flowers rosy-salmon with large carmine center. Very fine.

**Torpilleur.**—Dwarf grower, large flowers of a deep pink shade, large flower heads. Extra fine show.

Plants from 2 inch pots, each, 10c.; any 12 for \$1.00.

SPECIAL OFFER.—The set of 10 fine new Phlox for 75c.

FOR STANDARD VARIETIES SEE PAGE 16.



# New Geraniums for 1900.

## THE GRAND PINK BEDDER JEAN VIAUD (Bruant).

The best of all new Geraniums sent out for a long time. The plant is of stocky growth; incessant bloomer; flowers of largest size, in immense trusses. Flowers are semi-double, very similar to those of *Beaute Poitevine*, but the exquisite light fresh rose tint is entirely different. The upper petals are marked with two beautiful white blotches, adding greatly to the freshness of coloring. It is a plant of the future. Its habit of growth, uninterrupted blooming and hardiness will attract attention at once, and it will be grown in large quantities when better known. Each, 25c.; per doz., \$2.50.

**William Langguth, or Red Flowered Mrs. Parker.** The plant is of a short, stocky growth, beautiful deep green leaves, each marked with broad, snow-white band. It beats all the silver-leaved kinds in free blooming. Flowers double, bright red, large, extra filled out blooms, rising from the white-colored foliage very handsomely. Visitors at our greenhouses have all agreed in pronouncing it a first-class novelty. Each, 15c.; per doz., \$1.50; per 100, \$10.00.

**Capt. Dreyfus.** In this variety we have as good a bedder as S. A. Nutt of a different color, being bright cherry red; trusses large and thrown high above the foliage by the long, strong foot stalks. An exceedingly useful sort for bedding. Each, 25c.; per doz., \$2.50.

**Le Colosse.** Very large trusses, gigantic semi-double floret; color a very bright orange vermillion. Remarkable for the size of the flowers and the brilliancy of the color. Each, 25c.; per doz., \$2.50.

**Bellerophon (BRUANT RACE).** One of the grandest of recent introductions; will rank with the best. It is a single scarlet, with large, round florets, combined into immense trusses, which are held high above the plant. It is very free in bloom, the habit and foliage especially fine. Each, 20c.; per doz., \$1.50.

**Le Fraicheur.** Double. White, with a narrow band of rose pink around each petal, exactly like a *Picotee*. Absolutely novel and distinct, and one of the prettiest flowers that we have seen for years. Colors delightfully fresh and clear. Each, 25c.; per doz., \$2.50.

**Dryden.** Single, and a grand bedder; stands sun and rain remarkably well. It is a bright rosy red, with large white blotches on the two upper petals and smaller blotches on the three lower ones, and five suffused with lake at the junction of the two colors. Habit dwarf and compact, and extremely free in bloom. Each, 15c.; per doz., \$1.50.



## Ever-Blooming Geranium "America."

This new Geranium is a seedling of the popular dwarf variety *Mars*. Its color is brilliant and striking, being snow-white on the edge and changing through all the salmon shades into deepest rose in the center. The flowers are large and not self-colored; they are striped, mottled, blotched, and not two flowers on a plant in bloom seem to be alike. The trusses are carried on strong stalks well above the plant and are extra large. It withstands the outdoor sun as well as any sun-proof variety, and being of such remarkably dwarf growth, combined with its free-flowering habit, is bound to become the ideal pot and bedding geranium.

Price, 2½ inch plants, each, 50c.; doz., \$5.00.

### SPECIAL GERANIUM OFFER NO. 1

One each of the eight grand New Geraniums described above for \$1.75

FOR STANDARD GERANIUMS SEE PAGE 14.



JAPANESE FERN BALL—IN LEAF.

## Imported Japanese Fern Balls.

SOMETHING NEW FROM JAPAN.

These Fern Balls arrive from Japan in January. The roots are twisted and worked together in a ball shape 8 to 10 inches in diameter. The fresh young leaves soon sprout out and form a solid mass of fronds, completely covering the ball (see illustration), forming a ball of fern leaves 15 to 18 inches in diameter. They do well hanging in a greenhouse or window where not too much sun reaches them. They take up no valuable room and can be suspended from the roof and left there until wanted.

Price, in dormant condition.....each, 50c. Doz., \$4.00 100, \$30.00  
In leaf. .... " 75c. " 7.50 " 50.00

## The Grand New Ageratum "Stella Gurney."

A short, compact grower, well branched and extremely free blooming. The individual tufts are very large and dense, and the color is the most intense blue of a very agreeable shade we have ever seen in Ageratums. It has a velvety texture quite unlike the cotton-like flowers of this class. It is a thrifty grower, propagates easily, and by its neat, short and dense flowers of brilliant blue furnishes a bedding plant without an equal. It can be used as a border around Geraniums, with *Dusty Miller* or other combination, always making a pleasing effect. Grown by us two seasons, and it has bloomed from early Spring to late in the Fall, adding greatly to its usefulness and desirability. The best Ageratum in existence. Each, 15c.; doz., \$1.25; 100, \$8.00.

### NEW WHITE AGERATUM LOUISE BONNET.

Flowers white and abundantly produced. Growth is dwarf and compact, just what we have so long needed for borders. Each, 10c.; per doz., 75c.; per 100, \$5.00.

### AGERATUM PRINCESS PAULINE.

A most distinct and novel variety, of dwarf, compact habit, rarely exceeding five inches in height, its peculiarity being that both colors, blue and white, are combined in the same flower, the body of the flower being white, while the stamens are of a light sky-blue, giving the flower a pretty, variegated appearance. Per doz., 50c.; per 100, \$4.00.

## New Passiflora Southern Beauty.

The prettiest of all climbing plants. Grows well in any soil and commences to bloom in July and continues to flower until frost. Will make a growth of 20 feet during the summer. Flowers 4 to 5 inches across; color is blue, white, pink and red; very fragrant. In the North must be protected by covering in Winter. Each, 10c.; per doz., 80c.; per 100, \$6.00.



AGERATUM PRINCESS PAULINE.

# New Carnations FOR SPRING OF 1900.

ROOTED CUTTINGS, READY MARCH 1st.

## Grand New Pink Carnation "MARQUIS."

ORIGINATED BY L. E. MARQUIS, SYRACUSE, N. Y.

Has received five first-class certificates, silver cup at Philadelphia for best pink and silver medal of the Massachusetts Horticultural Society. It is without doubt the finest pink carnation ever introduced. It has been so pronounced by expert judges. Its color is distinctive, being unlike that of any other carnation. It is a true pink—a soft rich shade with no trace of purple or magenta and equally beautiful by artificial light or daylight. Its form is exceptionally perfect—very full and double, usually well rounded and built up in the center. Its petals are perfectly serrated and quilled. Its calyx is practically faultless and does not burst. Its size is phenomenal, 3½ to 4 inches and it often exceeds this, and that under ordinary culture. Its fragrance is delightful. Its keeping qualities are wonderful. Cut-flowers will last from one to two weeks. Flowers shipped from Syracuse to Chicago kept finely eight days after receipt. Its stems are strong and average 2 to 3 feet in length. It is very prolific—as free as the best of the standard varieties and much freer than any other large variety. It makes no "grass"—every shoot produces a flower. It is an absolutely continuous bloomer. It is a very vigorous grower, free from rust or other disease. It propagates readily. The loss in propagating is practically nothing. It lifts easily and owing to the mass of fibrous roots it makes, it receives no perceptible check. It lacks no essential of the model Carnation. In Color, Form, Size, Fragrance, Stem and Growth it is ideal. Rooted Cuttings March to April, 1900.

Per doz., \$2.00; per 100, \$10.00; per 1000, \$75.00; 25 at 100 rate, 250 at 1000 rate.

**Mrs. Thos. Lawson.** (Peter Fisher.)—No plant, of whatever kind, has ever received so much description and free advertising by the newspapers of the whole country as this sensational Carnation, which is said to have been sold for \$30,000. The size is enormous, stems stiff. It is free in growth, of strong, healthy constitution, and of a true pink color; altogether a 20th century Carnation. *Everything* has been claimed for it, and our own opinion is that it will justify the claim.

Per doz., \$3.00; per 100, \$14.00; per 1000, \$120.00.

**ESTELLE,** (Witterstaetter). (Scarlet Seedling Portia X Jubilee.)—A bright, illuminating scarlet, never coming "off-color," is fragrant, form excellent, better than Jubilee, which it somewhat resembles, stem strong and stiff, short at first after lifting, but attaining a length of from twelve to sixteen inches by December. Size from three to three and a half inches. In habit it is exactly the same as Portia, producing a heavy crop by the holidays, and blooming continuously. A most profitable variety. (Stock limited.)

Per doz., \$2.00; per 100, \$10.00; per 1000, \$75.00; 25 at 100 rate; 250 at 1000 rate.

## New Pink Carnation "ETHEL CROCKER."

Mr. Albert M. Herr considers this new California variety one of the best ever offered to the trade. The flowers under ordinary culture measure from 3 to 3½ inches in diameter, perfect in form and with a calyx that does not burst. The color is a clear rich pink, delightfully scented and with a stem almost as strong as that of the variety Mayor Pingree. The habit of the plant is good, health perfect, strong growth, and Mr. Herr says, "is freer in bloom than any other Carnation I ever grew. Flowering season is from October 1st to July 1st continuously, not a cropper, and all told the best commercial variety I ever saw or grew." Per doz., \$2.00; per 100, \$10.00; per 1000, \$75.00. (Ready in February.)

**Chicago or Red Bradt.**—This is a sport from Mrs. G. M. Bradt and is identical with the parent except in color, which is a deep scarlet. Will be extensively planted this year by most of the large growers. From soil, per doz., \$1.50; per 100, \$7.50; per 1000, \$60.00. (Ready now.)

**Olympia.** (John N. May.)—Color, glossy snow-white, very delicately penciled scarlet. Much less red in it than in Mrs. Bradt. Flowers extra large, smooth edges, stems, 2 to 2½ feet. Mr. May says that it produces 25 per cent. more flowers than Mrs. Bradt.

Per doz., \$2.00; per 100, \$12.00; per 1000, \$100.00.

**Genevieve Lord.** (Weber.)—The Peer of any light Pink Carnation ever offered to the trade. Color, clear pink, a little darker than Albertine. Blooms 3 to 3½ inches in diameter; very fragrant; calyx good, never bursts; long stem which holds the flower erect. In habit of growth it is almost perfection. Sturdy, vigorous and free. Never rusts.

Per doz., \$2.00; per 100, \$10.00; per 1000, \$75.00.

## STANDARD COMMERCIAL VARIETIES.

Prices are for Cuttings from soil. Sure to grow.

Mrs. Francis Joost, an improved Scott.....	100	1000
White Cloud, the best white.....	\$3 00	\$25 00
Cerise Queen, improved Tidal Wave.....	3 00	25 00
Mrs. Jas. Dean, beautiful clear pink.....	3 00	25 00
Flora Hill, prolific white.....	2 50	20 00
Gold Nugget, best yellow.....	3 00	25 00
Jubilee, fine scarlet, yet popular.....	2 50	20 00
Daybreak, delicate pink.....	2 00	18 00
Tidal Wave, carmine pink.....	2 00	15 00
Lizzie McGowen, pure white.....	1 50	12 00
Wm. Scott, the popular clear pink.....	2 00	15 00



ESTELLE.

## VARIETIES OF 1899.

The stock we send you, is transplanted into soil and far superior to sand cuttings partly rooted or over-grown in sand. Our stock is clean and healthy, if not satisfactory, you have the privilege to return it at our expense.

Price unless otherwise noted: Per 100, \$6.00; per 1000, \$50.00.

**G. H. CRANE.**—Considered by most growers to be the best scarlet sent out last year, an early, continuous bloomer. Color, bright scarlet.

**MELBA.**—Color, bright pink, a shade deeper than Daybreak. Free flowering and good stem, flower rather under size.

**AMERICA.**—Another good scarlet, shade lighter than Crane, excellent habit and blooming qualities. Large flowers, stiff stems.

**MAUD ADAMS.**—Color, deep clear cerise pink. Flowers rather small. Per 100, \$5.00

**GENERAL GOMEZ.**—Deep maroon, flowers 2 to 2½ inches in diameter, a good dark variety. Per 100, \$5.00.

**GENERAL MACEO.**—Flowers are full and nicely fringed, long wiry stems. Color, dark scarlet with maroon shadings, very fine color and free blooming. Per 100, \$5.00.

**GLACIER.**—A fine variety for side benches. Flowers are of good size and pure white, very free, flowering early and giving a fine crop for Xmas.

**Mrs. G. M. Bradt.**—This is not a new Carnation but still the finest variegated sort we have. It is the largest and most prolific of all fancy Carnations. Color, white, heavily edged and striped scarlet. We have a fine stock. Per doz., 75c; per 100, \$5.00; per 1000, \$40.00.



# CHRYSANTHEMUMS...Novelties for Spring of 1900. Ready March 1st.



**YELLOW FITZWYGRAM.**—The earliest yellow Chrysanthemum. Ready to cut September 25th to October 10th. Every grower has long wanted a yellow and pink to sell with his early whites; here is your yellow. It is dwarf, and stiff stemmed, 2½ feet; requires no staking. Precedes all other yellows by two to three weeks. The color is rich, and this variety has developed a stronger habit and freer foliage than its parent, the white Lady Fitzwygram. It bears close planting, but must be started early so that the bud can be taken about July 25th, not later. We have an enormous stock of it, and are prepared to furnish young plants by February 1st or sooner, at a price within the reach of every one.  
Doz., \$1.00; 100, \$7.00; 1,000, \$60.00.

**GOLDMINE.**—(Nathan Smith & Son.)—Unsurpassed in size, having been grown 11 inches in diameter. Foliage and general habit resembles Sunderbruch. Rich golden yellow. Outer petals reflexed, and center incurving in a whorl. In perfection November 20th to 30th. Best flowers were from buds taken October 10th. We predict it will depose Modesto and Golden Wedding, being more dwarf, surpassing both in size, a rival in color, and having better stem than the former. Certified by the C. S. A. at Chicago in 1898, scoring 93 points and averaging 93 points before four committees in 1899.  
Each, 50c; doz., \$5.00; 100, \$35.00.

**INTENSITY.**—(Nathan Smith & Son.)—Form reflexed, showing only the bright crimson upper surface of petals. Stem slender, but sufficiently wiry to carry the flower erect. Four and one-half feet high. Buds taken October 1st give best results. Those desiring succession of flowers can readily conceive the value of a bright crimson in perfection November 20th to 30th, a date when other good reds are scarce. Certified by the C. S. A.  
Each, 50c.; doz., \$5.00; 100, \$35.00.

**WALTER MOLATSCH.**—(H. A. Molatsch.)—Its period of blooming is October 8th, and the variety is most easily described as an early Wm. H. Lincoln. It is of good size, full center, an excellent keeper, and will stand an unusual amount of rough treatment, the petals not scalding easily, having a firm hold and being so tough that they are not easily bruised. In habit the plant is dwarf, growing about 3 feet high, the stem is thick and stiff and the foliage all that can be desired. N. C. S. Certificate,  
Each, 50c; doz., \$4.00; 100, \$25.

**SUPERBA.**—(Mme. F. Perrin and Maud Dean)—The latest Jap. Inc. pink that has come to our notice, being in perfection December 10th to 20th. A very double flower 5½ to 6 inches in diameter with high, rounded center. Color bright pink, intermediate between that of its parents. This we believe to be one of the best commercial varieties we have produced. Buds that were taken November 1st, will not be developed for Christmas. Height 4 feet. Take only terminal bud. Certified by the C. S. A. in 1898 and passing all of the Committees in 1899.  
Each, 50c.; doz., \$4.50.

**WHITE BONNAFFON.**—(Mrs. H. Robinson and Mrs. H. McK. Twombly)—A commercial variety of great promise which we predict will become as popular as the typical Maj. Bonnaffon. Color pure white, form identical with Bonnaffon, growth very short-jointed, not exceeding 3 feet in height. Foliage large and very dark green. Its lateness (November 20th to 30th) greatly enhances its value. Take terminal bud about October 10th. Certified by four Committees of the C. S. A.  
Each, 50c.; doz., \$5.00; 100, \$35.00.

**SPECIAL OFFER.**—One each of above six new Chrysanthemums for \$2.50.

## New Pompon Chrysanthemums.

Pompons and small flowering Chrysanthemums are coming in demand, as they make beautiful pot plants. Our display of these at Chicago Chrysanthemum Show attracted great interest with the public.

- Each, 20c.; doz., \$2.00, except when otherwise quoted.
  - ANGELIQUE.**—Pure white high-built flower, very compact and neat.
  - ZENOBIA.**—Extra bright clear yellow of brilliant shade; a bold, handsome flower. Each, 25c.; doz., \$2.50.
  - ATLAS.**—Bronze shaded lemon, very large and extra deep flower; distinct.
  - ATTLA.**—Deep orange maroon; very compact form; medium size.
  - MAGNIFICUS.**—Very beautiful, pure white, large size and extra good form. Producing fine branching sprays. All in every way. Each, 25c.; doz., \$2.50.
  - VIOLA.**—Deep violet shade, a very showy and distinct flower.
- The set of six new Pompons, one each, for \$1.20.

## Choice and Rare Varieties.

- JOHN K. SHAW.**—Ball shaped. Pink. Early.
- KUNO.**—Large white. Early.
- LIBERTY.**—Extra fine late yellow.
- MRS. TRENOR L. PARK.**—Best midseason yellow.
- MLL. LUCIE FAURE.**—Extra large, pure white. Midseason.
- WHITE FLYER.**—Midseason, large white.
- XENO.**—Bright pink, very fine. Late.
- W. H. CHADWICK.**—Waxy white. The finest one sent out for years. Late.
- YELLOW MRS. JEROME JONES.**—One of the finest late yellows.  
Per doz., 75c.; per 100, \$5.00.

## Pompons—Older Sorts.

- Black Douglas.—Dark crimson.
- Miss Davis.—Pure pink.
- Antoine de Noel.—Yellow bronze.
- Miss Astie.—Deep yellow.
- Miss May Williamson.—White ball.
- Canary.—Pale yellow.
- Martha.—Pure White. Per doz., 50c.

## Anemone.—Flowered Varieties

- Ada Strickland.—Chestnut red.
- Delicatum.—Cream colored.
- Descartes.—Crimson.
- Garza.—Large white.
- Halcyon.—White.
- Marie Stuart.—Light pink.
- Surprise.—Bright pink. Per doz., 50c.

## Ostrich Plume Varieties.

- Beauty Lyonnaise.—Red and old gold.
- Beauty of Truro.—Light pink.
- Enfant des Deux Mondes.—Pure white.
- Golden Hair.—Bright yellow.
- Louis Boehmer.—Lavender-pink.
- Mrs. C. B. Freeman.—Bronzy-yellow.
- Leocadia Gentils.—Clear yellow.  
Per doz., 50c.; per 100, \$3.00.

## Standard Varieties Arranged in Colors.

Per doz., 40c.; per 100, \$3.00.

### Yellows.

- Eugene Dailedouze.—Late.
- Golden Wedding.—Late.
- Henry Harrell.—Midseason.
- Jennie Falconer.—Midseason.
- Mrs. J. G. Whellden.—Early.
- Major Bonnaffon.—Late.
- Mrs. W. H. Rand.—Midseason.
- Mrs. O. P. Bassett.—Early.
- Mrs. G. Pitcher.—Midseason.
- Mrs. J. J. Glessner.—Late.
- Marion Henderson.—Early.
- Philadelphia.—Midseason.
- Pennsylvania.—Midseason.

### Single Daisy-flowered Sorts.

- Mispha.—Deep pink, very fine.
- Daisy.—White, yellow center.  
Per doz., 50c.

### Whites.

- Evangeline.—Midseason.
- Ivory.—Early.
- Lewanee.—Late.
- Mrs. Minnie Wanamaker.—Midseason.
- Mrs. Jerome Jones.—Late.
- Mrs. F. Bergman.—Early.
- Mayflower.—Midseason.
- Mrs. H. Robinson.—Early.
- Mrs. Martin A. Ryerson.—Late.
- Mrs. C. H. Weeks.—Midseason.
- May Foster.—Early.
- Robt. G. Garey.—Midseason.
- Snow Queen.—Midseason.
- The Queen.—Midseason.
- Western King.—Late.
- Yanoma.—Late.

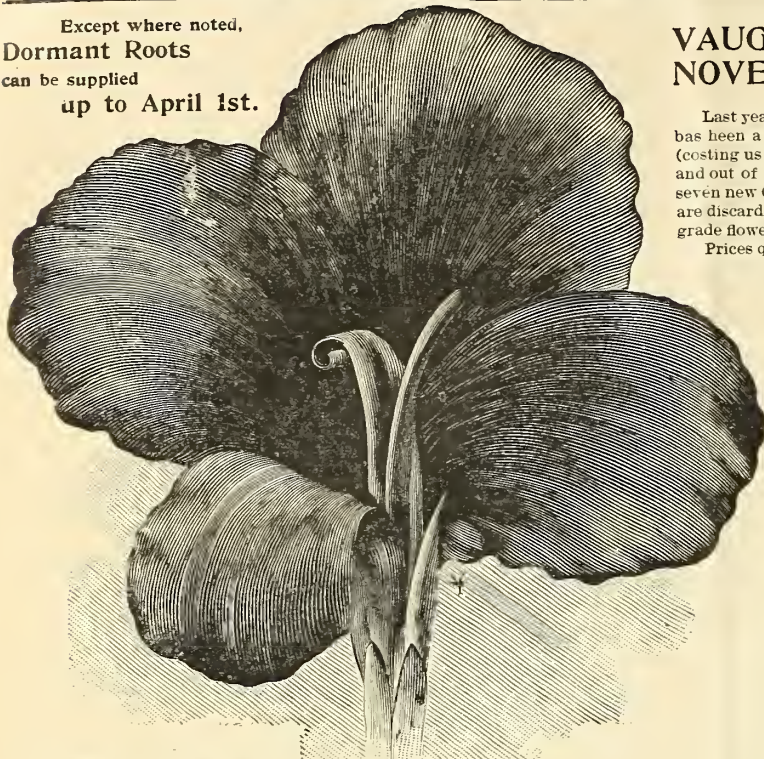
### Pinks.

- Autumn Glory.—Late.
- Glory of the Pacific.—Early.
- L'Amethyste.—Deep pink. Midseason.
- Mrs. S. T. Murdock.—Late.
- Mrs. Perrin.—Midseason.
- Miss Agnes L. Dalskov.—Early.
- Viviand Morel.—Midseason.

### Red and Bronze Sorts.

- Defender.—Red. Late.
- E. M. Bigelow.—Red. Late.
- Geo. W. Childs.—Red. Midseason.
- Joanna.—Bronze. Late.
- Mrs. A. J. Caton.—Bronze. Early.
- Oakland.—Terra Cotta. Midseason.
- Shavings.—Red and Bronze. Early.
- The Bard.—Red. Midseason.

Except where noted,  
Dormant Roots  
can be supplied  
up to April 1st.



MONSIEUR JARRY DESLOGES.

## VAUGHAN'S NOVELTY..... CANNAS For 1900

Last year probably doubled the former year's sales of these grand bedding plants. There has been a steady growth in the popular demand since we showed Crozy's twenty novelties (costing us \$2,000.00) at the World's Fair. For our trade orders on Cannas we cultivate in and out of doors at Western Springs a thorough up-to-date assortment. We offer this year seven new Crozy Cannas of special merit and four choice seedlings of our own raising. We are discarding or throwing into the mixed lots all the named varieties that do not possess high grade flowers or very desirable foliage. Write us for rare or scarce kinds.

Prices quoted are for strong growing plants, from three inch pots, ready March 1st.

**MONSIEUR JARRY DESLOGES.** (Crozy.) Height, 4 feet. Green foliage. This is indeed an extraordinary variety. The flower spikes are numerous and extra large; the petals are long and rounding, measuring 1½ to 2 inches across and of a thick, leathery substance. Color a dazzling scarlet-orange. The plant is a robust, strong grower, throwing up numerous flower stalks which are carried well above the foliage. Each, \$1.50; 2 for \$2.50.

**SOUVENIR DE MAD. NARDY.** (Crozy.) Height, 5 feet. Dark green foliage. Strong, robust grower, throwing up numerous flower stalks. The flower spikes are extra large and long, not too compact and carried well above the foliage, every flower showing distinctly. The flowers are wide and long, size of Florence Vaughan. Color is a dark yellow, covered over with blotches of bright crimson, making a most beautiful and striking show. Each, \$1.50; 2 for \$2.50.

**PETITE MOCOTE.** (Crozy.) Height, 2½ to 3 feet. Green foliage. Strong, bushy grower. Spikes enormous; very grand flowers. Color, rose, marbled darker, turning into clear carmine; bordered yellow, passing into white. Very beautiful. Each, \$1.00.

**JEANNE SCHMIDT.** (Crozy.) Height, 2½ to 3 feet. Green foliage. Plant of finest merit. Large, beautiful spikes; grand, wide flowers. Petals, beautiful, clear rose, strongly streaked with dark rose; border, canary yellow. Each, \$1.00.

**FLORIBUNDA.** (Crozy.) Height, 3 feet. Green foliage. Strong grower, throwing up numerous compact flower spikes, with large, rounding petals. Color, canary yellow, spotted with faint crimson spots. An improved Eldorado. Each, 1.00.

**L. PATRY.** (Crozy.) 4½ feet. Green foliage. Plant vigorous. Grand and beautiful rounded flowers. Color, salmon shaded rose, edged chestnut. Large, loosely formed, flower spikes. Beds its flowers as they fade. Very free. A grand sort. Each, \$1.25.

**FRANCOIS GUILLEMET.** (Crozy.) 3½ to 4 feet. Green foliage. Strong grower and very free-flowering. Spikes enormous and compact, carried well above the foliage; petals large and rounding. Color bright purplish garnet. Very fine. Each, \$1.00.

**SPECIAL OFFER.** One strong plant each of Crozy's seven new Cannas, described above, for \$7.00.

## VAUGHAN'S NEW SEEDLING CANNAS...Originated and Thoroughly Tested at Western Springs.

**DAVID HARUM.** (Our Seedling of 1898.) 4 feet. Dark bronze foliage. Strong, robust grower, carrying its flower stocks well above the foliage, and one of the freest blooming Cannas we have ever seen. We have counted on one plant seven flower stalks, containing twenty-seven flower spikes in flower, at one time. Flowers are of large size, with well-rounded petals; good substance and not too compact. Color is a bright vermilion-scarlet, dotted with crimson spots. Stock limited. Each, \$1.00; 3 for \$2.50; per doz., \$9.00.

**VICTORY (or Century).** (Our 1897 Seedling No. 404.) Height, 5 feet. Extra strong, robust grower, throwing up immense flower stalks, each stalk having from seven to nine flower spikes. The flowers are of the largest size, petals measuring 1½ inches, and suggest a possible crossing of the Italian with the Crozy sorts. In color a bright orange scarlet, with fine crimson veins running lengthwise of the petal, and bordered with an irregular band of yellow. The small lower petal and the throat are mottled golden yellow. The foliage must not be overlooked in this great Canna; its extra large, thick, rubber-like leaves are as large as a banana leaf. For effective display, both of flower and foliage, we know of no Canna to equal it. Stock limited. Each, 60c.; per doz., \$6.00.

**RED INDIAN.** (Our 1897 Seedling No. 418.) Bronze leaf, strong, robust grower, sending up numerous flower stalks well above the foliage. Each stalk carries from five to six flowering spikes. Color, deep scarlet; petals large and rounding. The bronze foliage and scarlet flowers make a grand contrasting effect. Each, 35c.; 3 for \$1.00.

**MANDARIN.** (Our 1897 Seedling No. 502.) Height, 6 feet. Large, beautiful bronze leaves of same character as Discolor. It carries the flower stalks well above the foliage, and with its large and well shaped flowers makes a grand sight. The flower is of a pure orange color, as shown by the American Florist color chart. Each, 25c.; doz., \$3.00.

**SPECIAL OFFER.** One each of above four new Seedling Cannas for \$2.00.

### ORCHID - FLOWERED CANNAS.

Prices are for strong plants, from 3-inch pots.

**ALEMANNIA.** The gigantic flowering Canna. This kind produces the largest flowers which have been obtained as yet in the way of Cannas. The plant grows about 5 to 6 feet high. Numerous musa-like, glaucous leaves. The outer petals are scarlet-orange, with a very broad, gold yellow border. This we consider one of the best of this type. Per doz., \$1.50; per 100, \$10.00.

**AMERICA.** Dark bronze leaves. Height, 4½ feet. Flowers enormous, of a very beautiful glowing red, flamed and striped. Per doz., \$1.00; per 100, \$8.00.

**AUSTRIA.** Much resembles the Burbank, but far inferior to it in substance of flowers. Per 100, \$4.00.

**BURBANK.** The flowers are truly gigantic in size, the three upper petals spreading fully 7 inches, and the form is really semi-double; toward the inner part the petals show fine crimson spots; all the rest of the flower is of a most beautiful, rich canary yellow. The plant is a very strong grower, 5 to 6 feet high, with leaves with a texture like rubber. Per doz., 75c.; per 100, \$5.00.

**PARTENOPE.**—Height 5 to 6 feet. Green foliage. Flowers of extra large size and fair substance. Color bright reddish salmon. Very showy and distinct. Early and more free flowering than most of its class. Per doz., \$1.00; per 100, \$8.00.

**ITALIA.** Bright orange-scarlet, with a very broad golden border. Per doz., 75c.; per 100, \$5.00.

Write for prices on dormant roots up to April 1st.

### TWO CHOICE AMERICAN SEEDLINGS.

(Crozy Type.)

**MARTHA WASHINGTON.** The flowers are very large and frequently have five broad petals. The trusses are immense and the color pure bright rose. Beautiful and attractive. A vigorous grower. Height, 3 feet. Per doz., \$1.50; per 100, \$10.00.

**BLACK BEAUTY.** Height, 4 to 5 feet. This is the best of all the dark leaved Cannas. The flowers are small, but its foliage is superb, being a deep, bronzy red, almost black. Flowers of little value. Per doz., \$2.00; per 100, \$15.00.

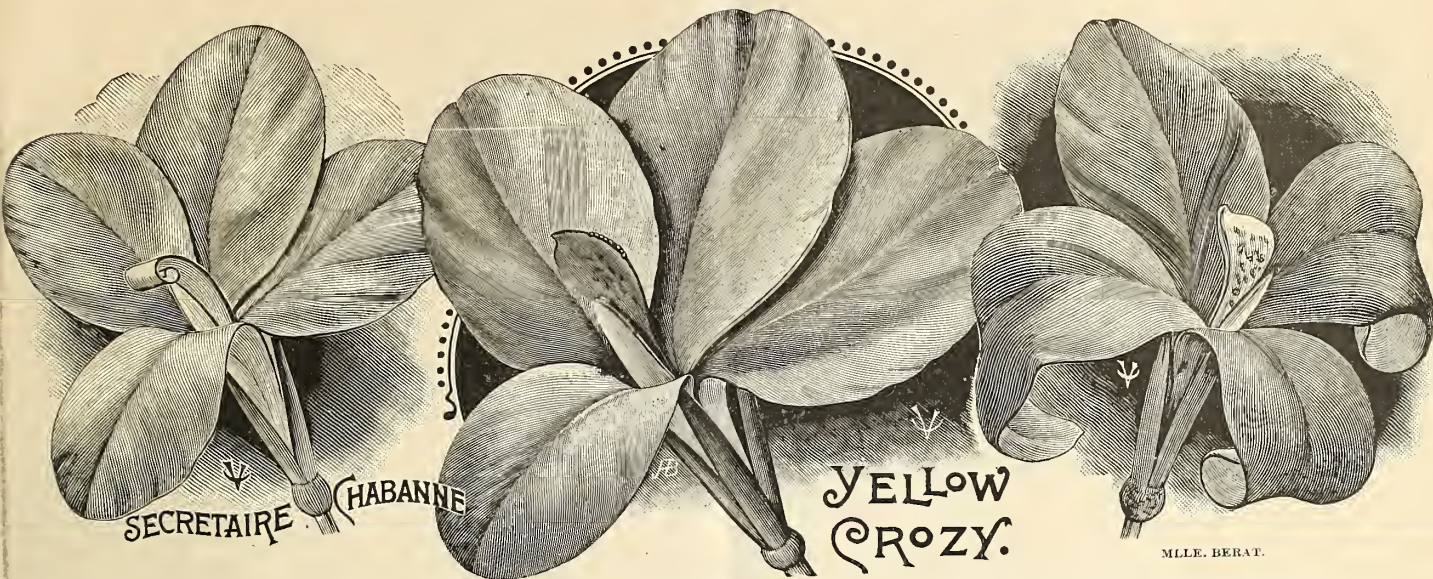


ALEMANNIA.

# CANNAS CHOICE STANDARD SORTS FOR 1900

These Prices are for Strong Plants from 3-inch Pots, ready after March 1st. Write for Prices on Dormant Roots.

SEE OPPOSITE PAGE FOR NOVELTY CANNAS



## CRIMSON AND SCARLET SHADES.

**Alphonse Bouvier.** 6 feet; green foliage; color bright crimson; large flowers. Per doz., 75c.; per 100, \$6.00.

**Beaute Poitevine.** 3½ feet; green foliage; flowers bright, rich crimson, and with erect flower spikes. One of the finest bedding cannas. Per doz., \$1.00; per 100, \$8.00.

**Chas. Henderson.** 4 feet; green foliage; flowers crimson. Per 100, \$5.00.

**Chicago (Medal).** Height 5 feet. This is the best vermilion scarlet to date. Green foliage. The large flowers open out nearly flat; petals 1½ inches wide and five in number. The color is a clear, deep vermilion, smooth and without markings, except a purplish gloss. Per doz., \$1.00; per 100, \$8.00.

**J. Wilkinson Elliott.** 4½ feet. Green foliage; flower spike large and open, petal long and broad; color light vermilion, covered lengthwise with fine distinct crimson veins. Per 100, \$6.00.

**Menelek.** Height 4 feet. Green foliage; strong grower. Its flowers are of large size, with broad petals of good substance, and produced in immense trusses. Color rich nasturtium red. Per doz., \$1.25; per 100, \$10.00.

**Philadelphia.** Flowers gigantic in size, 5 to 6 inches across; deep, rich ruby red; by far the finest of all red cannas. Per doz., \$1.00; per 100, \$8.00.

**President Cleveland.** Height 3½ feet. One of the finest cannas. Green foliage; free flowering. The very large flowers form well-shaped, compact trusses of bright orange scarlet. Per doz., \$1.00; per 100, \$8.00.

**President McKinley.** Height 3 feet. Green foliage. Medium size flowers of good substance. Color a fiery, deep crimson. A profuse bloomer. Per doz., \$1.00; per 100, \$8.00.

**Robert Christie.** 5 to 5½ feet. Green foliage. Large flowers of a bright vermilion; resembles Chicago. Per 100, \$6.00.

**Triumph.** 3½ to 4 feet. Flamingo type, but more vigorous; larger flower and truss; rich, bright red; broad, thick petals; very durable; a constant bloomer. Per doz., 75c.; per 100, \$6.00.

## GILT EDGE VARIETIES.

**"Cuba Libre."** An improved Madam Crozy. Large flower, deep blood red, and fully equal to Madam Crozy in flowers, foliage and habit of growth. Per doz., \$1.00; per 100, \$7.00.

**Incendie.** 3 feet. Green foliage. Very prolific bloomer, throwing up numerous flower heads well above the foliage. Flowers of medium size, salmon pink, bordered with an irregular band of yellow. Under side of petals solid golden yellow. Per doz., \$1.50; per 100, \$12.00.

**Little Billee (or "Premier").** A very dwarf variety, intermediate in color between Queen Charlotte and Souv. d'Antoine Crozy. Grows about 3 feet high. Fine as a pot plant and equally good for bedding. Per doz., \$1.00; per 100, \$7.00.

**Mme. Leon LeClerc.** 5 feet. Green foliage. Bright orange scarlet, with a narrow yellow margin on each petal. Per doz., \$1.00; per 100, \$8.00.

**Madam Crozy.** 4 feet. The all 'round general purpose canna. Dormant roots. Per 100, \$5.00.

**Queen Charlotte.** 3½ feet. The famous German seedling. Rich crimson scarlet, with wide gold border on every petal. Broad green leaves. It is a profuse bloomer. Per 100, \$6.00.

**Souv. d'Antoine Crozy.** 3 feet. Green foliage. A most distinct flower; rich crimson scarlet, with wide gold border on every petal. Per doz., \$1.00; per 100, \$8.00.

**Sam. Trelease.** 3 feet. Green foliage. Originated with Mr. James Gurney, superintendent of Tower Grove Park and head gardener of the Missouri Botanical Gardens. The greatest merit of this variety is that the petals open flat, which are of good substance; make a large, nearly perfect circular flower, different from all other sorts. In color it is almost a pure scarlet; very rich and glowing. The edges and center are marked with yellow about the same as in Madam Crozy. Per doz., \$1.50; per 100, \$10.00.

## BRONZE-LEAVED VARIETIES.

**Bronze Beauty.** 3½ to 4 feet. Bronze foliage; flowers open and well above the foliage; petals large and curving. Color same as J. C. Vaughan, but has a changeable appearance in different lights. Per 100, \$8.00.

**Bassett's Red.** 5 feet. A grand bronze-leaved variety of the old Indian canna, with intense bright bronzy red foliage; valuable either for massing by itself or for planting in connection with the dwarf French varieties. Per doz., 75c.; per 100, \$6.00.

**Discolor.** 10 feet. Bronzy red, mammoth leaves, small flowers. Per 100, \$5.00.

**Egandale (Medal awarded).** 4 feet. Bronze foliage; strong, compact flower spikes; color currant red. The finest bedding canna of its color. Per 100, \$6.00.

**F. Neuvessel.** This is a splendid sort, of a soft, pleasing shade of carmine; of good size and excellent habit. The foliage is bronze, with dark green markings. It is of strong, robust habit, growing 4½ feet high. Very effective. Per doz., 75c.; per 100, \$6.00.

**Inglewood.** Height 5 feet. Foliage rich plum purple; extra strong grower. Flowers of the largest size; clear, deep vermilion. Per doz., 75c.; per 100, \$6.00.

**J. D. Cabos.** 4½ feet. Bronze foliage; flowers large and round; color exceedingly distinct rich apricot. Per 100, \$5.00.

**Leonard Vaughan.** Height 5 feet. THE BEST LARGE-FLOWERED DARK BRONZE-LEAVED VARIETY TO DATE. Color bright scarlet; petals measuring 1½ inches. Per doz., \$1.00; per 100, \$7.00.

**Sempaphore.** Height 5 to 6 feet. Dark bronze foliage. Flowers are a pure orange shade, which, combined with the rich foliage, is very striking. Per doz., \$1.00; per 100, \$8.00.

## PINK AND SALMON SHADES.

**Francois Gos.** Height 3½ feet. Green foliage; early and prolific bloomer; well rounded flowers. Color pure orange, without markings. We consider this the best in this color. Per doz., \$1.00; per 100, \$8.00.

**Mlle. Berat.** 5 feet. Green foliage. The best bedder we have. It is a very soft shade of rosy carmine. The petals are long and hang gracefully upon the flower stalk. A bed of this variety is simply superb, making a fine show of good flower trusses all of the time. Per doz., \$1.25; per 100, \$8.00.

**Paul Marquant.** 4½ feet. Green foliage. Strong flower-spikes; extra large flower of a deep salmon color, smoothly shaded orange. Per 100, \$5.00.

**Secreteaire Chabanne.** 3½ to 4 feet. Green foliage. Extra strong grower and free flowering. The flowers stand out from the spikes separately in such a manner as to attract attention. Its color is a beautiful orange, with deeper shadings; flowers large and round. Per doz., \$1.00; per 100, \$8.00.

**Stella Kanst.** 5 feet. Flowers medium size, of rich apricot; foliage green. Per 100, \$5.00.

**"The Burlington."** (Our seedling of 1896.) 3½ feet. Green foliage. Flowers large and rounding, of a clear orange-scarlet, with a bronze lustre; strong grower, with clean, handsome flower-spikes showing well above the foliage. Per doz., \$1.00; per 100, \$8.00.

## YELLOW SHADES.

**Comte de Bouchard.** 4 feet. Green foliage. Resembles Florence Vaughan. Per 100, \$8.00.

**Dwarf Florence Vaughan (Comtesse de Sartoux Thorene).** The best of last year's introductions. It is of uniform, dwarf habit, never exceeding 2½ feet in height. Color rich golden yellow, thickly dotted with bright red. It supplements that grand standard kind by repeating it in a dwarf growth. Per doz., \$1.25; per 100, \$10.00.

**Eldorado.** Foliage green. Flowers large yellow, finely speckled with lightest red. The bed is always a mass of the brightest golden yellow. Per 100, \$7.00.

**Florence Vaughan (Medal).** The highest type of canna flower, the petals being remarkably wide, rounded on the ends, of good substance and flower very large. Though thickly dotted with bright red, its general effect in the flower beds is a rich orange yellow. The foliage is green; splendid broad leaves. 4 feet. It is a decided ever-bloomer. Per 100, \$6.00.

**Vice Pres. David.** Height 4 feet. Green foliage; robust grower. Extra large, well rounding flowers. Color bright yellow, heavily splashed with carmine. Per doz., \$1.25; per 100, \$10.00.

**Yellow Crozy.** Height 4 feet. Green foliage. Color a clear, pure canary yellow with no red markings, except a few faint red spots on the smallest lower petal. Per doz., \$1.00; per 100, \$8.00.

# Palms and Decorative Plants.



Measurements from Top of Pot to Top of Tallest Leaf in Natural Position

### ARAUCARIA EXCELSA.

The most fashionable plant today. The small plants grown in pots are most serviceable for table and other decorative purposes.

6 inch pots,	20 inches high.	4 to 5 whorls.	Each,	\$1 25
7 "	24 "	5 "	"	1 50
8 "	36 "	5 to 6 "	"	3 00
8 "	45 "	7 "	"	4 00

### ARAUCARIA ROBUSTA COMPACTA.

6 inch pots.	14 to 16 in. high.	4 to 5 whorls.	Each,	\$2 00
7 "	30 "	5 to 6 "	"	4 00

### ARECA LUTESCENS.

Size Pot.	Height.		Each.	Doz.
4 inch.	14 to 16 inches.	3 plants in a pot.	\$0 40	\$4 00
5 "	18 to 20 "	3 "	75	8 00
6 "	24 "	3 "	1 00	10 00
7 "	30 "	3 "	1 50	15 00
7 "	36 "	3 "	2 00	24 00

### COCOS WEDDELIANA.

Used largely for centers of Fern Pans.

Size Pot.	Height.	Each.	Doz.	100.
2½ inch.	6 to 8 inches.	\$0 15	\$1 50	\$12 00
3 "	8 to 10 "	20	2 00	15 00
4 "	12 to 14 "	30	3 00	25 00
5 "	8 to 10 "	3 plants in pot, ea., 50c.; doz.,	5 00	
6 "	12 to 14 "	5 plants to a pan., each,	1 00	

### FICUS ELASTICA (Rubber Tree).

Height.	Each.	Doz.
14 inches. Fine, perfect plants.....	\$0 40	\$4 00
18 "	50	6 00
24 "	75	8 00
36 "	1 00	12 00

### PHŒNIX RECLINATA AND CANARIENSIS.

3 inch pots.	6 to 8 inches high.	Each,	\$0 15	Doz.,	\$1 50
4 "	10 to 12 "	"	25	"	2 50
7 "	24 to 30 "	"	1 50	"	15 00
8 "	bushy plants, 3 feet	"	3 00		

### PANDANUS VEITCHII.

2½ inch pots, fine plants.....	each,	\$0 25
3 "	"	40
7 "	18 inches high	2 00
7 "	24 "	3 00

### PANDANUS UTILIS.

2 inch pots, seedlings.....	each,	\$0 10	Doz.,	\$1 00
3 "	fine plants.....	15	"	1 50
4 "	"	25	"	3 00
6 "	"	75	"	8 00



ARAUCARIA EXCELSA.

### ASPIDISTR, Variegated Leaved.

We have a fine stock of this valuable store and house plant, in all sizes from 2½ in. pots with 1 leaf to 8 in. pots with 20 leaves, at 10c. per leaf.



RUBBER TREE.

### LATANIA BORBONICA.

Size Pot.	Leaves.	Height.	Each.	Doz.	100.
2 inch.	.....	6 to 8 in.	\$0 05	\$0 50	\$4 00
3 "	.....	10 to 12 in.	10	1 00	8 00
3½ "	1 to 2 character.	12 to 14 in.	25	2 50	18 00
5 "	4 to 5 "	15 to 18 in.	50	5 00	
6 "	6 "	18 to 20 in.	75	9 00	
6 "	6 to 7 "	22 to 24 in.	1 00	12 00	
7 "	7 "	30 in.	1 50	18 00	

We have a few of following sizes not in perfect condition, ends of leaves slightly clipped. Very fine plants for decorating.

8 inch.	3½ feet high.	6 to 7 leaves.	Each.....	\$2 00
9 "	4 "	7 "	"	3 00
9 "	5 "	8 "	"	4 00
12 "	5 "	10 "	"	6 00

### KENTIA BELMOREANA.

Size Pot.	Leaves.	Height.	Each.	Doz.	100.
3 inch.	3 to 4	6 to 8 inches.	\$0 20	\$2 00	\$15 00
3½ "	4	9 to 10 "	25	3 00	20 00
4 "	4 to 5	12 to 15 "	50	5 00	
5 "	5 to 6	15 to 18 "	75	9 00	
5 "	5 to 6	20 to 22 "	1 00	12 00	
6 "	6 to 7	24 "	1 50	15 00	
6 "	6 to 8	28 to 30 "	2 00	20 00	
6 "	7 to 8	34 to 36 "	2 50	28 00	
7 "	7 to 8	36 to 38 "	3 00	32 00	
9 "	6 to 7	44 to 46 "	4 00		
9 "	6 to 7	50 to 54 "	5 00		
9 "	6 to 7	56 to 60 "	6 00		
10 "	6 to 8	65 "	7 50		
12 "	8 heavy leaves.	6 ft. high,	10 00		

### KENTIA FOSTERIANA.

Size Pot.	Leaves.	Height.	Each.	Doz.
2½ inch.	3 leaves.	6 inches high.	\$0 15	\$1 00
4 "	4 "	15 "	50	5 00
5 "	5 "	20 "	75	8 00
6 "	5 "	24 "	1 00	11 00
6 "	5 "	30 "	1 25	13 00
6 "	5 to 6 "	36 "	1 50	15 00
6 "	5 to 6 "	40 "	2 00	22 00
9 "	6 to 7 "	5 feet high.	5 00	
10 "	6 to 7 "	5½ feet high.	7 50	
12 "	7 to 8 "	6 to 7 feet high.	10 00	

### IMPORTED CYCAS STEMS.

#### CYCAS REVOLUTA (Sago Palm).

We will have a large stock of this popular decorative plant for delivery in April, 1900. Stems weighing from one pound upward. Early orders obtain the advantage of our advance contract rates. Note low prices.

Per lb., 13c.; per 100 lbs., \$10.00.

Write for quotations on large quantities.

# ROSES FOR FLORISTS

For Novelty Roses see Page 4.

## NEW ROSE CORONET.

Sweetest, largest and freest blooming Pot Rose in cultivation. A cross between Paul Neyron and Bon Silene. Flowers measure from 4 to 6 inches in diameter; form is full, deep, and very double. In bud the color is a deep, rich carmine, which, as flowers open, lightens to a soft pink. Fragrance of the Bon Silene.

Strong plants from 2½ inch pots.....per doz., \$1.25; per 100, \$8.00  
Strong plants from 4 inch pots.....each, 20c.; per doz., \$2.00

## NEW ROSE RED MARECHAL NEIL.

A cross between General Jacqueminot and Marechal Neil. Form and flower like the Yellow Neil. Color carmine-red, shading to pink.

Each.....10c. Doz .....75c. 100.....\$5.00

## CLOTHILDE SOUPERT.

Introduced to the American trade by us. We maintain our position as headquarters on this stock by supplying only selected plants for every order. You make no mistake in buying Souperets at Western Springs.

Price, per 100, 2 inch pots, \$2.50; 2½ inch pots, \$3.00;  
3 inch pots, \$5.00; 3½ inch pots, \$8.00

**NEW YELLOW SOUPERT MOSELLA.** Price, per 100, 2 inch pots, \$2.50; 3½ inch pots, \$8.00.

**WHITE MAMAN COCHET.** A grand white variety for bedding; extra strong plants. Per 100, \$3.00; per 1000, \$25.00.

**MARGARET DICKSON.** Pure white hybrid. Per doz., 75c.; per 100, \$5.00.

**MARY WASHINGTON.** The best all summer blooming hardy white Climbing Rose. Per doz., 50c.; per 100, \$3.50. Strong 2-year-old, per doz., \$1.25; per 100, \$8.00.

**GOLDEN GATE.** Fine for forcing. Long-pointed buds, pure white, showing a rose-colored center. Per doz., 50c.; per 100, \$3.50.

**HERMOSA.** We have a fine stock of this old favorite. Per 100, \$3.50.

**DINSMORE.** This grand red rose is one of the best perpetual blooming hybrids. Per doz., 60c.; per 100, \$4.00.

## HARDY MEMORIAL ROSES.

Used Extensively for Cemetery Planting. Flower in Clusters.

Strong plants from 2 inch pots, per doz., 60c.; per 100, \$4.00. Two-year-old plants, per doz., \$1.50; per 100, \$12.00.

**Wichuraiana.** Single white flowers.

**Pink Roamer.** Single flowers, bright pink with white center.

**Universal Favorite.** Double flowers beautiful pink shade of Bridesmaid.

**South Orange Perfection.** Double flowers, soft hush pink, changing to white.



CORONET.

## Florists' Varieties for Winter Forcing.

Extra Stock. Our Pots are fully up to sizes stated.	2½ inch		3½ inch
	Per 100	1000	100
American Beauty, grandest forcing rose.....	\$6.00	\$50.00	\$12.00
Bridesmaid, the most popular pink.....	3.00	25.00	8.00
Catherine Mermet, pink, finest form.....	3.00	25.00	8.00
Duchess of Albany, deep rose.....	5.00	40.00	12.00
Kaiserin Augusta Victoria, pure white.....	4.00	35.00	10.00
La France, standard pink.....	4.00	35.00	10.00
Mrs. Robt. Garrett, bright pink.....	4.00		9.00
Meteor, crimson.....	3.00	30.00	8.00
Madam Hoste, creamy white.....	3.00	30.00	8.00
Niphetos, purest white.....	4.00	35.00	10.00
Papa Gontier, red, very fine.....	4.00	35.00	10.00
Perle des Jardins, best yellow.....	3.50	35.00	9.00
Souvenir President Carnot, flesh pink.....	4.00	35.00	9.00
Senator McNaughton, cream color.....	4.00	35.00	10.00
Souvenir de Wootton, crimson.....	5.00	40.00	10.00
Sunset, tawny yellow, shaded apricot.....	4.00	35.00	10.00
The Bride, most popular white.....	3.00	25.00	9.00

## Bedding Roses for Summer Planting.

Strong plants from 2½ inch pots, 100, \$3.00; 1000, \$25.00.

American Perfection.	Helen Gambier.	Maman Cochet.
Agrippina.	Isabella Sprunt.	Marie Lambert
Bon Silene.	J. B. Varonne.	Pink Souperet.
Caroline Marniesse.	Jewell.	Progress.
Champion of the World.	Little Pet.	Princess Bonnie.
Cornelia Cook.	Luciole.	Perle d'Or.
Duchess de Brabant.	Mignonette.	Queen Scarlet.
Etoile de Lyon.	Marie Guillot.	Safran.
Eliza Eugier.	Maurice Bouvier.	The Queen.
F. Jamin.	Malmaison.	White Bon Silene.

CLIMBING ROSES. 2 inch pots.		
100, \$3.00.	Doz., 50c.; 100, \$3.00.	
Climbing Wootton.	Wm. A. Richardson.	Zepherin Drouat.
Climbing White Pet.	Climbing Capt. Christy.	Climbing Meteor.
Dawson.	Empress of China.	Climbing Niphetos.
Cherokee	Marechal Neil.	Climbing Perle.
Solfatara.	Bardou Job.	Climbing La France.
Climbing Marie Guillot.		

## Dormant 2-Year-Old Roses, Hybrid Perpetuals and Others.

This stock is first-class and of the RIGHT KINDS; well branched with good fibrous roots. Our cold storage cellar, 28x150 feet, built especially for this class of stock, contains 25,000 of these Hybrid Perpetual Roses. PERSONAL INSPECTION INVITED.

Baltimore Belle, Seven Sisters, Prairie Queen. Extra heavy stock. Per doz., \$1.50; per 100, \$10.00.

### THE CRIMSON RAMBLER.

This rose sold in 6 and 7 inch pots in Eastern cities the past season at \$5.00 and \$7.00 each.

As a pot plant for retail sales this rose is incomparable. Its hundreds of blossoms all open together and seem to improve for at least two and even three weeks. The bright crimson color holds without fading and contrasts finely with the glossy foliage. It forces easily. We have fine dormant stock.

3-year-old, 4 to 5 feet, well branched, heavy... doz., \$3.00 100, \$20.00  
2½ inch pots..... " .75 " 4.00

**Crimson Rambler, in Tree Form.** 4 foot clear stem with 2 foot bushy tops in fine condition; will make a grand show. Each, 50c.; doz., \$5.00.

**Yellow Rambler (AGLAIJA).** This rose is the hardiest yellow climbing rose yet introduced. It blooms like Crimson Rambler in large trusses.

**Pink Rambler, or Euphrosyne.** Color, a clear light red.

**White Rambler, or Thalia.** Pure white, similar to Aglaija.

### PRICE FOR YELLOW, WHITE AND PINK RAMBLERS:

2½ inch pots..... per doz., \$0.60	100	\$2.50
2-year-old dormant plants..... " 2.00	"	15.00

### BUDED STOCK.

Varieties marked \* we can also supply on their own roots at \$13.00 per 100.

Price, per 100, \$11.00; per 1000, \$100.00.

Margaret Dickson.	Coquette des Alps.*	John Hopper.*
Paonia.	Paul Neyron.*	Mabel Morrison.*
Baroness Rothschild.	Persian Yellow.	Mad. G. Luizet.
Capt. Christy.	Rugosa Alba.	Mad. Chas. Wood.*
Gen. Jacqueminot.*	Malmaison.	Marshall F. Wilder.
Clare Lyonnaise.	Giant of Battles.	Mrs. John Lang.
Anna de Diesbach.*	Merveille de Lyon.	Perle des Blancches.*
La France.	Boule de Neize.	Prince C. de Rohan
Marie Bauman.	Fisher Holmes.	Ulrich Brunner.*
Magna Charta.*	Gen. Washington.	And others.
Mad. Geo. Bruant.	Baron Bonstetten.*	

American Beauty, Mad. C. Testout, Kaiserin Augusta Victoria, \$15.00 per 100.

**HERMOSA, Dormant.** Holland-grown, 3-year-old, fine lusher stock on own roots, per 100, \$13.00.

**HERMOSA, Dormant.** French-grown, 2-year-old, on own roots, per 100, \$8.00; 1000, \$75.00.

**CLOTHILDE SOUPERT, Dormant.** Own Roots, 2-year-old, field-grown, per 100, \$10.00.

**MAD. PLANTIER.** Own roots, extra strong and well branched, 100, \$8.00.

**RUGOSA, Alba and Rubra.** Strong 2-year-old, per 100, \$10.00.

**MOSS ROSES—Blanche Moreau, Salet, Crested Luxemburg.** 3 feet, heavy stock, per 100, \$10.00.

**TREE ROSES on Rugosa Stock.** With elegant tops, 4 foot stem, each, 60c.; per doz., \$6.00.

**ENGLISH SWEET BRIAR ROSES.** 1-year-old, per 100, \$3.00.

# OUR GENERAL COLLECTION OF GERANIUMS.

For Novelty Geraniums See Page 7.



## CHOICE AND RARE SORTS.

We have increased the past year our general stock of all Geraniums and are prepared to supply the steady increasing demand for these, which are sure to be as popular again as formerly. The stock of good Geraniums this spring will be scarce. On account of the drouth last summer, plants made very little growth. Customers will do well to get their orders in early. You will find in our general collection nothing but the very best, having discarded many superseded kinds. Strong and healthy 2-inch stock. Price, except where noted, per 100, \$5.00; per 1,000, \$40.00.

**Alphonse Ricard.** Large semi-double flowers of a brilliant shade of orange-red. Dwarf grower and fine bedder.

**Athlete.** Immense trusses of large, round, single flowers of vivid scarlet.

**Bearse Poitevine.** The ideal pink bedder. Bruant type semi-double flowers.

**Camille Bernardin.** Single; very large trusses; free-flowering habit; rosy peach-pink, marbled with white.

**Col. Barre.** Semi-double, dwarf and very free. The lower petals are rosy pink, upper petals darker and marked scarlet at the base. Trusses are of largest size. Each, 15c.; per 100, \$10.00.

**Crabbe.** Single; charming shade of cherry-red; very large round flowers. Is not a good bedder, but makes an elegant pot plant. Each, 10c.; per doz., \$1.00.

**Double New Life.** The flowers are double, brilliant red, and in the center of each appears another semi-double white floret.

**Francis Perkins.** The grandest bright pink bedding variety to date. A fine grower and stands the sun perfectly. Very fine in blooming.

**Fleur Poitevine.** Large single flowers. Color a brilliant rosy carmine, marbled and striped white. Very fine for pot sales.

**Grand Duchess Olga.** Large semi-double flowers, each flower blotched white, red and lilac. Very fine.

**Gloire de France.** Large, double, round flowerets; color salmon-pink, white center. A fancy pot variety; heavy zone on foliage.

**J. J. Harrison.** Semi-double Bruant. Brilliant scarlet; extra large flowerets. A vigorous dwarf grower and best of bedders.

**Mary Hill.** Double. Clear pink; extra fine grower and summer bedding variety. One of the best.

**Mme. de La Roux.** Single Bruant. A clear, bright salmon. One of the finest of bloomers.

**Mrs. Beecher Stowe.** Single flowers; grand trusses; flowerets large; center white, covered with veins of orange-carmine. Elegant pot variety.

**Mars.** A superb bedding and pot geranium. It is of dwarf and compact habit and extraordinarily floriferous. The flowers are a clear light salmon, darker at the center, and produced close to the foliage.

**Mad. Rozati.** Double white; good grower and fine bedder, blooming all summer.

**Mrs. E. G. Hill.** Single pink, bordered with rosy salmon. One of the best for summer blooming.

**Mad. Hoste.** Single. Soft rosy scarlet, with large white eye. Very fine and striking.

**Mad. Jaulin.** Entirely distinct color, in Bruant type. Semi-double; center of flower very delicate pink, bordered white. A grand bedder.

**Mad. Bruant.** A grand single variety, totally distinct from all others. Large trusses of flowers. Color white, shaded and veined with carmine-lake. A good pot plant, also a good bedder.

**Mad. St. Pol Bridoux.** Single. Flower large; center white, covered with veins and marbling of rosy orange-carmine. Very distinct.

**Mad. Blanch Jamet.** Single. Flowers very large and round. The shades and variety of colors are novel. The five petals are bordered with clear carmine, center white. Very beautiful as a pot plant, also a good bedder. Per doz., \$1.50; per 100, \$15.00.

**Mad. A. Gerard.** Covered with single flowers from spring until autumn. Color bright carmine, with white blotches. Fine bedder and also pot plant.

**Pres. Leon Picas.** A dwarf, vigorous growing, double variety. An abundant bloomer. Color very bright ruby-red, shading to violet. Very fine.

**Pres. Victor Dubois.** Enormous trusses; large, semi-double flowerets. Color beautiful salmon-shaded pink. Grand bedder and free bloomer.

**Raspail Improved.** Semi-double flowers, extra in size. Color dark scarlet, on order of Nutt. Very free flowering.

**Triomphe de Nancy.** Flowers semi-double, carmine-red, with white markings very peculiarly arranged.

**Thos. Meehan.** Double. Extremely large trusses and flowerets. Color brilliant rosy-pink, the base of upper petals marked orange. Each, 15c.; doz., \$1.50.

**Vera Vend.** Large trusses of semi-double flowers and large petals, the borders of which are rosy-orange, center white and delicately marbled and striped with rosy-orange shadings. One of the finest of the Aureole section. Each, 15c.; per 100, \$10.00.

## General Collection of Geraniums.

Per doz., 50c.; per 100, \$4.00; per 1,000, \$35.00.

**Dr. Baumetz.** Double, scarlet.  
**Daybreak.** Single, light pink.  
**Electric.** Single, dark scarlet.  
**General Sherman.** Single, bright red.  
**Heteranthe.** Double, scarlet.  
**Hedwig Buchner.** Double, white.  
**James Kelway.**  
**L. Aube.** Single, white.  
**La Favorite.** Double, white.

**Leonard Kelway.**  
**Meteor.** Single, dark crimson.  
**Marguerite de Layers.** Single, white.  
**Phonograph.** Double, crimson.  
**Queen of the West.** Single, scarlet.  
**S. A. Nutt.** Double, dark crimson.  
**Spotted Beauty.** Single, white and pink.  
**White Swan.** Double, white.  
**W. P. Simmons.** Double, crimson.

## Ivy Leaved Geraniums.

Per doz., 50c.; per 100, \$4.00.

**Souv. de Chas. Turner.** Color bright scarlet, with soft rose tint.  
**Beauty of Jersey.** Very double, bright scarlet.  
**Galilee.** Semi-double, rose-pink, good grower.  
**Joan of Arc.** The only double white ivy Geranium.

## Variegated Leaved Geraniums.

**Mrs. Parker; Mrs. Pollock; Mt. of Snow.** Per 100, \$6.00.  
**Chieftain; Happy Thought; Mad. Sallerot.** Per 100, \$3.50.  
**Rose Geraniums.** Per 100, \$4.00.

## Fancy Leaved Caladiums.

Dry Bulbs, ½ to 1 inch in diameter.

For window boxes, show plants or greenhouse growing, this is one of the most decorative plants. Rich, thrifty leaves, handsomer than Begonias; marbled, veined and striped with white, pink and dark red. Bulbs should be started into growth about April 1st, in a warm house. Price, named sorts, per doz., 10-15 varieties, \$1.50; per 100, \$10.00.

## Mixed Ferns for Florists.

We have selected the varieties named below as the most useful to florists for filling ferneries and jardiniere and for other florist work. Our stock consists of strong plants from 2 to 2½-inch pots and can at once be repotted into 3-inch pots.

	Per 100.	2 in. 3 in.
Adiantum Cuneatum	\$4.00	\$ 6.00
Adiantum Pubescens	4.00	6.00
Adiantum Capillus Veneris	4.00	6.00
Adiantum Bausii	5.00	7.00
Adiantum Bellum	5.00	7.00
Adiantum Princeps	4.00	6.00
Adiantum Farleyense	4 in., 40c.;	8.00 20.00
Pteris Tremula	4.00	6.00
Pteris Serrulata	4.00	6.00
Pteris Serrulata Cristata	5.00	7.00
Pteris Cretica Alba Lineata	4.00	6.00
Pteris Mayii	5.00	8.00
Onychium Japonicum	4.00	6.00
Cyrtotium Falcatum	5.00	8.00
Lomaria Gibba	5.00	8.00
Aspidium Wollastoni	6.00	10.00
Nephrolepis Philipensis	4 in., \$12.00	4.00 8.00
Nephrolepis Exaltata	4 in., 12.00	4.00 8.00
Selaginella Emiliana	4.00	8.00

Assorted Ferns for fern dishes, our selection. Per 100, \$4.00.

## Dahlias—Whole field roots.

Per 100.

Named sorts, White	\$12.00
Named sorts, Red	10.00
Named sorts, Pink	12.00
Named sorts, Yellow	8.00
Named sorts, Assorted colors	10.00
All colors mixed	6.00
Pot grown plants, ready April 10th, named varieties, any color	Per 100, \$5.00.

## New Browallia Speciosa Major.

A most attractive and beautiful new flowering plant. The plants are always a mass of lovely foliage and charming blue flowers. The plant is not difficult to grow. Blooms freely and of good habit. Small plants, 2-inch pots, per doz., 75c.; per 100, \$5.00.

## Edelweiss (or Lion's Foot).

A tufted, white, woolly, perennial herb from Switzerland. Succeeds in well drained, sandy soil or exposed parts of rockwork. Covered with woolly, white flowers from June to August. Each, 10c.; doz., \$1.00.

## Aster Seedlings.

We offer for spring planting. Branching or Simple Aster. Stocky grown seedlings from flats, in white, purple, lavender, red and pink. Per 100, \$1.50; per 1,000, \$10.00.

## Poinsettia.

A limited number of old stock plants @ \$2.00 per doz. From June until September we offer fine young plants in 2½-inch pots, made from cuttings, @ \$5.00 per 100. Get your order in early for this popular Xmas plant.



# GENERAL LIST OF PLANTS.

Unless otherwise mentioned, plants in this list are from 2½-inch pots. Not less than 12 of a variety at these prices.



ABUTILON SAVITSI.

**BEGONIA ERFORDIA.** One of the most prolific bloomers; continually covered with clusters of its delicate, rosy-salmon flowers. An excellent variety for pots. Florists having a retail trade will find this a rattling good Begonia. Plants begin to bloom when in 2-inch pots and continue so through the season. It also does well for out-door bedding, growing and blooming in our hot sun equal to the best Geraniums. Per doz., 50c.; per 100, \$3.00.

**BEGONIA VERNON.** A grand plant for bedding out; will stand the sun like a Geranium. Foliage rich, glossy green with red edge; flowers varying from deep red to clear rose. Blooms while quite small and makes an elegant pot plant for market sales. Strong plants, 2½-inch pots. Per doz., 50c.; per 100, \$4.00.

**BEGONIAS—Flowering Varieties.** A choice assortment of twenty varieties. 2½-inch pots, per doz., 50c.; per 100, \$4.00. 3-inch pots, per doz., \$1.00; per 100, \$3.00.

**BEGONIA REX.** Florists' sorts. Per doz., \$1.00; per 100, \$6.00.

**ABUTILON SAVITSI.** A novelty of sterling merit. A great improvement on *Souv. de Bonn.* The variegation is much whiter. More than half of the leaf, and in some cases a great many leaves being almost pure white. It is a very compact grower and makes an elegant pot plant. Will sell on sight to retail buyers. Stands the sun. Per doz., 75c.; per 100, \$6.00.

**ABUTILON, Souv. de Bonn, Eclipse, Blue Bells, Golden Bell.** Per 100, \$4.00.



BEGONIA ERFORDIA.

## Our Dewey Set of Six Grand Bedding Coleus.

Tried and tested by us for past two summers and proved a great improvement over existing sorts. We have put the price reasonable, so as to be within reach of every florist.

Price per doz., 60c.; per 100, \$3.50; per 1,000, \$30.00; 25 at 100 rate. The set of 6 for 25c.; 2 sets for 45c.; 4 for 85c.

**DEWEY.** A better bedder, a brighter color than *Verschaffeltii*. Color bright crimson, edged maroon.

**CUBA LIBRE.** A bright crimson, shading to maroon, with finely scalloped edges of pea green.

**SAMPSON.** Short, pointed leaves; center rosy carmine, edges mottled green and brown. Very striking. Retains its color all summer.

**HOBSON.** Dwarf and bushy grower. A new color, rosy pink shading to crimson, with margin of pea green.

**MILTONIANA.** The grandest of all black leaved sorts. A rich, deep, velvety, almost black leaf, holding same color all summer and never turns brown.

**JOHN ROGERS.** The only Coleus we have found to hold its color all summer; of old gold and pea green. Ruffled edges.

Our general collection of Coleus are all of the best old and tried varieties. We have a large stock and are prepared to take care of all orders for such as *Verschaffeltii*, *Golden Bedder*, *Beckwith Gem*, *Herman Sudermann*, *Pres. Druetz*, *Klondike*, *Queen Victoria*, *South Park*, *Queen of Summer*, *Lovely Sunset*, *Firebrand*, *Hiawatha*, *John Good*, Etc.

Price per 100, \$2.50; per 1,000, \$20.00.

## New Pelargoniums.

We offer fine plants of Fall stock cuttings, strong plants from 3-inch pots.

**COUNTESS.** (New.) Bright cerise, with dark blotches on upper petals, and white throat.

**MRS. ROBT. SANDIFORD.** Grand variety. Flowers large size, well doubled, of glistening snow white color.

**MADAM THIBAUT.** White, richly blotched and marbled with rose.

Per doz., \$1.00; per 100, \$8.00.

## Agathea Cælestis or Blue Daisy.

The flowers are sky blue with yellow disc. Dwarf grower, forming fine bushy pot plants 12 to 18 inches high. Always covered with its blue blossoms. Blooms from November to June.

Per doz., 50c.; per 100, \$4.00.

# GENERAL LIST OF PLANTS.

Unless otherwise mentioned, plants in this list are from 2½-inch pots. Not less than 12 of a variety at these prices.

	Per 100		Per 100
Acalypha Miltoniana.....	\$4.00	Lemon Verbena.....	\$3.50
Acalypha Tricolor and Marginata.....	4.00	Manettia, Bicolor and Cordifolia.....	3.00
Ageratum, Princess Pauline.....	4.00	Marantas, 3 sorts.....	5.00
Alyssum, Double, Single and Variegated.....	2.50	Marguerites, Etoile d'Or (Yellow).....	3.00
Alternanthera, Aurea and Versicolor.....	3.00	Marguerites, California (White).....	3.00
Anthemis Coronaria.....	4.00	Mexican Primrose.....	3.00
Asparagus Tenuissimus.....	5.00	Minneapolis Vine, Pilogyne Suavis.....	4.00
Calla, Little Gem.....	5.00	Moon Flower, White and Blue.....	4.00
Caryopteris Mastacanthus.....	3.00	Musa Ensete.....	Per doz., \$2.00
Centaurea Gymnocarpa.....	2.50	Musa Ensete, 4-inch.....	Per doz., 3.00
Cestrum Parqui.....	4.00	Orange, Otaheite.....	4.00
Chinese Lantern Plants.....	4.00	Pansies, International Mixture, strain fall sowing.....	2.00
Cissus Discolor.....	4.00	Paris Daisy, White and Yellow.....	3.00
Cobaea Scandens.....	5.00	Parrot's Feather.....	4.00
Cuphea, Llavæ and Platycentra.....	3.00	Petunias, Double Assorted.....	4.00
Cyperus Alternifolius.....	3.00	Pinks, Her Majesty and Souv. de Salle.....	4.00
Dracaena Indivisa.....	4.00	Pinks, Garden.....	3.00
Farfugium Grande.....	8.00	Plumbago, White and Blue.....	4.00
Feverfew, Little Gem.....	3.00	Primula Obconica.....	4.00
Fittonia Verschaffeltii.....	5.00	Sanchezia Nobilis.....	8.00
Fittonia Argyroneura.....	5.00	Sanseveria Zeylanica.....	4.00
Fuchsias, Black Prince, Mrs. Hill and many others.....	3.00	Smilax.....	2.50
Grevillea Robusta.....	4.00	Solanum Jasminoides Grandiflora.....	4.00
Heliotrope, Mad. Bruant.....	4.00	Swainsonia Galegillolia Alba.....	4.00
Heliotrope, White Lady, Mrs. Bussy and others.....	3.00	Tradescantia, Variegated.....	2.00
Hibiscus, Assorted.....	4.00	Tropaeolum, Pheoba.....	4.00
Hydrangea, Red Branched.....	4.00	Vinca, Trailing, Green and Variegated.....	3.00
Hydrangea, Otaksa, Hortensis and Tbos. Hogg.....	4.00	Violets, Prince of Wales and La France.....	4.50
Impatiens Sultani.....	4.00	Violets, California, Marie Louise and Single Blue.....	3.00
Ivy, English and German, 3 inch.....	2.50	Verbenas, 2-inch pot plants.....	2.50
Jasmine, Assorted.....	4.00	Verbenas, Rooted Cuttings.....	Per 1,000, \$8.00 1.00
Lantanas, Assorted, Named.....	3.00		



# HARDY SHRUBS AND FRUITS.



DEUTZIA PRIDE OF ROCHESTER.

HYDRANGEA PANICULATA GRANDIFLORA.

SPIRÆA VAN HOUTTII.

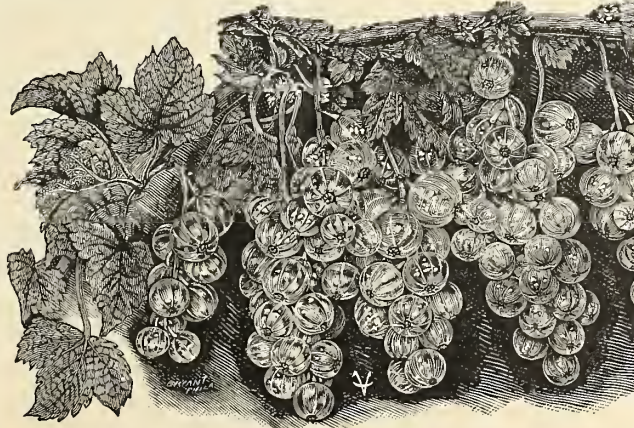
## SMALL FRUITS.

	DOZ.	100
Apple, Bismarck, 3 feet.....	\$2.00	\$15.00
Blackberry, Iceberg, the white Blackberry.....	.50	4.00
"    Eldorado, Snyder's and Stone's Hardy.....	.50	3.00
Cherry, Windsor, 2 to 3 feet.....	1.50	10.00
"    "    4 to 5 feet.....	2.00	15.00
<b>New White Currant, Marvin's Crystal.</b> It is exceedingly prolific, bearing fully two to one against the well-known Cherry Currant. Fruit is of the largest size. 1 year old plants.....		
2 year old plants.....	.75	5.00
3 year old plants.....	1.50	10.00
3 year old plants.....	2.00	15.00
Write for prices on 1000 lots.		
Currant, Fay's Prolific, 1 year old.....	.50	3.00
"    "    2 years old.....	.75	5.00
"    Red Dutch, 1 year old.....	.40	2.50
"    "    2 years old.....	.60	4.00
"    North Star, 2 years old.....	.75	5.00
"    Victoria Black, 1 year old.....	1.00	8.00
"    "    Red, 1 year old.....	.75	6.00
"    Cherry, 1 year old.....	.75	5.00
Gooseberry, Industry, 1 year old.....	1.00	7.50
"    "    2 years old.....	1.50	10.00
"    Keepsake, 2 years old.....	1.50	10.00
Grapes, Niagara, Worden, Brighton, Concord and Delaware, 1 year old.....	.50	4.00
2 years old.....	1.00	7.00
Grapes, Select Foreign, for Forcing, Black Alicante, Black Hamburg, Raisin de Calabre, Muscat of Alexandria, strong plants, 1 year old.....	1.50	10.00
Logan Berry, 2 years old.....	.75	6.00
Mayberry, 2 years old.....	.75	6.00
Plum, Abundance, 3 feet.....	1.25	10.00
Peach, Crawford and Wonderful, 3 to 4 feet.....	1.25	10.00
Pear, Bartlett and Koonce, 3 to 4 feet.....	1.25	10.00
Raspberry, Kansas, Loudon, Older, Royal Church, Columbia, Gregg, Shaffers and Golden Queen. Per 100, \$2.00; 1000, \$12.00.		

	DOZ.	100
Calycanthus Floridus, 2 years old.....	\$0.50	\$ 4.00
"    "    3 years old, strong.....	2.00	15.00
Crataegus Coccinea (Double White Thorn), 2 years old.....	1.00	8.00
Ceanothus Azareus, blue flowers, 2 years old.....	.75	6.00
Colutea Aborescens, yellow flowers, 2 years old.....	.75	6.00
Cytisus Laburnum or Golden Chain, 2 years old.....	.60	4.00
Deutzia Gracilis, for forcing, bushy plants, 3 years old.....	1.00	7.50
"    Lemoinei, new double white, 1 year old.....	.75	5.00
"    Fortunei, Pride of Rochester and Crenata fl. pl., 2 yr. old.....	.60	4.00
Eleagnus Longipes, 2 years old.....	.60	4.00
Forsythia Viridissima, yellow flowers, 2 years old.....	.75	6.00
Golden Leaved Elder or Sambucus Aurea, 2 years old.....	.75	6.00
"    "    "    "    3 years old, 3 to 4 feet.....	2.00	15.00
Hydrangea Paniculata Grandiflora. We have a splendid stock of this beautiful flowering shrub, which is one of the best selling plants we know of, one that always gives satisfaction. Price, large, bushy, field-grown plants, 2 to 3 feet high. (These retail at 50c. each).....	1.25	10.00
Second size, 18 to 24 inches.....	.85	6.00
Standard Hydrangea Paniculata Grandiflora. Grown in standard or tree form, plants with 2 feet clean stem and 24 inch bushy top.....	Each, 30c.,	3.00
Lilacs, Syringa Alba, white Lilac, 3 year old.....	.60	5.00
"    Rubra de Marley, purple, 3 years old.....	.75	6.00
"    Charles X, reddish-purple, 2 year old, own roots.....	1.00	8.00
"    Mad. Lemoine, double white, 2 year old, grafted.....	1.00	8.00
"    Japonica, Tree Lilac, 2 year cuttings.....	1.00	8.00
Ligustrum Ibo, white flowers.....	.60	4.00
Prunus Triloba, beautiful dark purple leaves, double pink flowers, 2 years old, grafted.....	.75	6.00
Prunus Pissardi, purple leaved plum, 2 years old, grafted.....	.75	6.00
Ptelea Trifoliata Aurea (Golden-leaved Hop Tree), 2 years old.....	.75	6.00
Philadelphus Coronarius (Mock Orange or Syringa), 2 year old cuttings.....	.60	4.00
Ribes Sanguineum, crimson flower, 2 years old.....	.60	4.00
Rhododendron Catawbiensis, 12 to 15 buds.....	9.00	
"    Cunninghami, white, 12 to 15 buds.....	9.00	

## HARDY SHRUBS.

	DOZ.	100
Althea, Jeanne d'Arc, the new double white, 2 years old.....	\$0.75	\$ 5.00
Althea Punicus Roseus, new double dark red, 2 years old.....	.75	6.00
Althea Alba Lutea Plena, yellow, 2 years old.....	1.00	8.00
Althea, assorted named sorts, 2 years old.....	.60	4.00
3 years old.....	.75	8.00
Azalea Mollis, 1 year old, 2 and 3 buds.....	1.25	8.00
3 years old, 15 to 25 buds.....	4.00	25.00
Almonds, double white and double pink, 3 to 4 feet.....	2.00	15.00
Barberry Thunbergii, dark red foliage, in Fall, 2 to 3 feet.....	1.00	8.00
Barberry Purpurea, purple foliage.....	.75	5.00
Cornus (Dogwood), assorted kinds, 2 years old.....	.75	5.00
Cornus Spathii Aurea, new, 2 years old.....	1.25	10.00
Cydonia Japonica-Japan Quince, 2 years old.....	.50	4.00



THE NEW "MARVIN CRYSTAL" CURRANT.

## CRIMSON SPIRÆA.

Anthony Waterer. The Ideal Florists' Plant. It outshines all other Spiræas in brilliancy of color, a bright crimson. A beautiful habit, dwarf and dense growth; a persistent bloomer during the summer and autumn out of doors.

	DOZ.	100
Dormant, 2 years old, field grown.....	\$1.25	\$10.00
"    1 year old, field grown.....	.75	6.00
Spiræa Van Houttii, pure snow-white flowers. No other shrub equals Spiræa Van Houttii for a hedge, 2 years old.....	.60	4.00
Spiræa Bumalda, Fortunei Rosea, Arguta Multiflora, 2 years old.....	.60	4.00
Snowberry Symphoricarpus Fructu Albo, 2 years old.....	.60	4.00
Viburnum Plicatum-Japan Snowball, 2 years old.....	1.00	8.00
3 years old.....	1.50	12.00
Viburnum Opulus fl. pl., old-fashioned snowball, 3 years old.....	.75	5.00
Weigelia Nana Variegata and Rosea, 2 years old.....	.75	5.00

# VAUGHAN'S

The Best and Freshest  
IN AMERICA.

## Florists' Flower Seeds.

The Stocks here offered are in all the important kinds special strains selected and kept true for florists use. In every class of interest for Florists, such as Asters, Pansies, Primulas, Cyclamen, Cinerarias, etc. We not only carry a complete assortment, but also the most expensive strains that the most careful growers and hybridizers can produce. We use in all our choicest mixture of the florists seeds some varieties which actually cost us more than the selling price but which bring up the Mixture to a high standard.

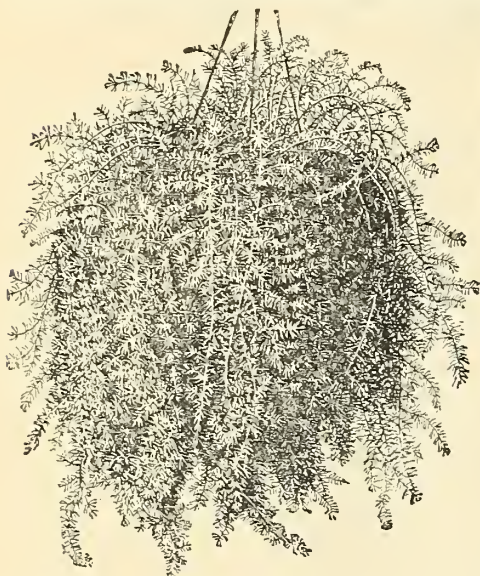
Of New Crop and Tested Germination.—We prove the growth of our active selling stocks twice a year and none are sent out which do not show the right percentage of growth.

By Our Contract Arrangements, supplying our stock seed, we are in position to offer Flower Seeds at very best trade rates, but of quality much superior to average importation.

PLEASE NOTE.—Trade packets contain considerable more seed than ordinary or retail packets, being based on Florist's needs for ordinary purposes. Florist's invariably get Trade Packets unless otherwise specified.

FLOWER SEEDS FOR SOWING IN SUMMER.—Cinerarias, Primulas, etc. We issue a special circular in May. Should you fail to receive one, please write for it, as we shall have some very desirable Novelties to offer.

10 per cent.  
SPECIAL  
CASH DISCOUNT.  
Orders over \$2.00 for  
Flower Seeds  
if the Cash is enclosed.  
10 per cent.



ASPARAGUS SPRENGERI.



SNAPDRAGON, QUEEN OF THE NORTH.



ASPARAGUS PLUMOSUS NANUS.

This is one of the most popular plants, both for pots and cutting, grows easily from seed. Our seed is true and germinates well.

	Trade Pkt.	Oz.		Trade Pkt.	Oz.
<b>Abronia Umbellata Grandiflora</b> .....	5	20	<b>Ammobium Alatum Grandiflorum</b> (Everlasting).....	5	15
<b>Abutilon</b> , fine mixed.....100 seeds, 15c.; per 1/8 oz., 50c.			<b>Ampelopsis Veitchi</b> , Boston Ivy.....	lb., \$1.00;	10 15
<b>New Hybrids</b> , mixed.....	100 seeds	25c.	<b>Anchusa Angustifolia</b> , azure blue.....	10	25
<b>Acacia Mollissima Floribunda</b> .....	5	30	<b>Anemone Sylvestris</b> , white.....	10	30
Lophanta Speciosa Nana Compacta.....	10	20	<b>Antirrhinum</b> , Snapdragon, tall sorts, mixed.....	5	15
Many kinds mixed.....	10	20	New Large-Flowering, mixed.....	10	25
<b>Acanthus Latifolius</b> , beautiful foliage plant, hardy perennial	5	15	<b>Queen of the North</b> . In this new sort, we have the finest and most beautiful of all Snapdragons. The plants grow into handsome, regular bushes, 12 inches high, covered with large, white flowers of a deliciously sweet perfume. Suitable for bedding and pot culture.....	10	30
<b>Achillea</b> , The Pearl, double white.....	25		<b>Dwarf Sorts</b> , Tom Thumb, mixed.....	10	30
<b>Aconitum Napellus</b> (Monk's Hood), blue.....1/4 oz., 20c;	10		<b>Aquilegia</b> , single mixed, Columbine.....	5	15
<b>Acroclineum</b> , single mixed.....	5	15	Double mixed.....	5	15
<b>Roseum</b> , pink.....	5	15	<b>Chrysantha</b> .....	1/4 oz., 25c.;	10
" <b>Flore Albo</b> , white.....	5	15	" Grandiflora Alba.....	1/4 oz., 25c.;	10
<b>Adlumia Cirrhosa</b> , Allegheny Vine.....	10	60	<b>Cœrulea</b> , beautiful sky-blue.....	1/4 oz., 35c.;	10
<b>Adonis Aestivalis</b> , (Flos Adonis).....	5	10	<b>Vervæneana fol. var.</b> , beautiful foliage.....	10	60
Vernalis, bright yellow.....	5	10	<b>Vervæneana Atroviolacea pl.</b> , blue, double, variegated foliage.....	10	60
<b>Agathæa Cœlestis</b> , The Blue Daisy. The flowers are the very counterpart of the Paris Daisy, which is sky-blue with a yellow disc; of easy growth and produces flowers all the year. 9 in. A fine winter bloomer.....1/4 oz.; 30c.;	15		<b>Vulgaris Alba Plena</b> , double white.....	10	25
<b>Ageratum Mexicanum</b> , blue.....	5	15	<b>Arabis Alpina</b> , Alpine Rock Cress, white.....	10	60
<b>Blue Perfection</b> , dwarf, new.....	10	15	<b>Aristolochia Siph</b> , Dutchman's Pipe.....1/4 oz., 40c.;	15	1 50
<b>Mexicanum Album</b> , white.....	5	15	<b>Artemisia Absinthium</b> , Wormwood.....	5	15
<b>Imperial Dwarf Blue</b> .....	10	25	<b>Arundo Donax</b> , Giant Reed, fine foliage.....	10	40
" White.....	10	25	Donax, fol. var., variegated.....	20	1 00
<b>Princess Pauline</b> , new.....	5	20	<b>Asclepias Tuberosa</b> , hardy perennial.....	15	
Mixed.....	5	20	<b>Asparagus Plumosus Nanus</b> , 100 seeds \$1.25; 1000 seeds \$10 00		
<b>Agrostemma Coeli Rosa</b> , Rose of Heaven.....	5	10	<b>Sprengeri</b> .....	100 seeds 60c.; 1000 seeds \$5 00	
Coronaria, mixed.....	5	10	Write for prices on larger lots on the above two kinds.		
Flos Jovis, pink.....	5	10	<b>Decumbens</b> . Produces vines 3 feet long, freely branched, clothed with bluish green leaves. The numerous small flowers, which have the fragrance of the Lily of the Valley, are white, with red stamens, and give the plant a very distinct appearance. The vines are very durable, and for decorative purposes of great value, especially since the growing period falls in the winter. Cultivate like A. Sprengeri.....25 seeds, 60c.; 100 seeds, \$2.00.		
<b>Alyssum Maritimum</b> , Sweet Alyssum.....lb., \$1.40;	5	15	<b>Asperula Azurea Setosa</b> .....	5	10
Benthami Compactum, dwarf.....	10	20	Odorata, Waldmeister or Woodruff.....	10	30
<b>Little Gem</b> , extra fine strain.....lb., \$2.50;	10	25	<b>Asters</b> , Perennial Varieties, extra choice mixed.....	10	60
Saxatile, Gold Dust (Perennial).....	5	15			
Saxatile Compactum.....	10	20			
<b>Amaranthus Tricolor</b> , Joseph's Coat.....	5	15			
Tricolor Splendens.....	10	40			
Atropurpureus.....	5	10			
Caudatus.....	5	10			
Salicifolius, willow-leaved.....	5	30			
Superbus (Coleifolius).....	5	30			
Many sorts mixed.....	5	10			



## Branching, or Simple Aster.

The best late cut-flower sort.

- White Branching.**— $\frac{1}{4}$  oz., 25c.; oz., \$1.00; trade packet, 10c.  
**Purple Branching.**— $\frac{1}{4}$  oz., 25c., oz., \$1.00; trade packet, 10c.  
**Lavender Branching.**— $\frac{1}{4}$  oz., 25c.; oz., \$1.00; trade packet, 10c.  
 One trade packet each of the above 5 colors for 40c.  
**Branching Aster.**—Mixed, oz., 85c.;  $\frac{1}{4}$  oz., 25c.; trade pkt., 10c.

### COMET ASTER.

	Trade Pkt.	Oz.		Trade Pkt.	Oz.
<b>Bright Rose</b> .....	20c	\$1 60	<b>Pure White</b> .....	25	1 60
<b>Pink Bordered white</b> .....	20	1 60	<b>Peachblossom, new</b> .....	20	1 60
<b>Light Blue</b> .....	20	1 60	<b>Crimson</b> .....	20	1 60
<b>White and Lilac</b> .....	20	1 60	<b>Light Blue and White</b> .....	20	1 60
<b>Many colors mixed</b> .....				$\frac{1}{4}$ oz., 35c.	15 1 20

### DWARF QUEEN.

This splendid Aster makes dwarf, bushy plants about ten inches high. The flowers resemble in shape and size the Victoria Aster.

**White, Crimson, Pink, Light Blue.** Each, per  $\frac{1}{4}$  oz., 60c.; pkt., 25c.

**Dwarf Queen Aster.**—Mixed colors, per  $\frac{1}{4}$  oz., 50c.; trade pkt., 20c.

**TRIUMPH ASTER.**—Resembles Dwarf Chrysanthemum in habit. The flowers are from two and a half to three inches across; brightest, deep satiny blood-red; splendid for pot culture. Per  $\frac{1}{4}$  oz., 60c.; trade packet, 25c.

**Vaughan's Fireball.**—The best of the brilliant scarlet dwarf Asters. Excellent for pots and beds. Trade pkt., 25c.;  $\frac{1}{4}$  oz., 40c.

**Dwarf Chrysanthemum Flowered.** (Height, 1 ft.)

**Snow White,** White turning to Rose, White turning to Azure Blue, Peach Blossom, **Brilliant Rose, Crimson, Fiery Scarlet,** very effective, Light Blue, White and Dark Blue, Dark Blue.

Each of above, per oz., \$1.50;  $\frac{1}{4}$  oz., 50c.; trade packet, 25c.

**D. C. F. A. Mixture of all Colors.**—Oz., \$1.20; trade pkt., 20c.

**DWARF VICTORIA, all colors mixed.**—Oz., \$2.00, trade pkt., 25c.

**Dwarf Bouquet.**—Height, 8 inches. Mixed. Trade pkt., 10c.; oz., \$1.00.

	Trade Pkt.	Oz.
<b>Auricula</b> (Primula) fine mixed.....	Per 1-16 oz.	75c.; 25c.
<b>Bachelor's Button,</b> mixed (see also Centaurea).....	5	10
<b>Balloon Vine</b> .....	5	15

### BALSAMS.

**BALSAM,** Double Pink, Crimson, Scarlet, Flesh Color, Lilac, each..... 10 60

**Alba Perfecta.**—This is the largest and best double white Balsam, unequaled in doubleness and large size of its camellia-shaped flowers.

..... Per  $\frac{1}{4}$  oz., 50c.; 15

**Double White,** a very good strain..... 10 60

**Double Camellia Flowered,** all colors, mixed..... 10 50

**Double Rose Flowered,** all colors, mixed..... 10 40

**Double Dwarf,** mixed..... 10 30

**VAUGHAN'S INVINCIBLE.**—A splendid strain producing

very double flowers of the finest form. They are shy seeders..... 15 1 00

**Balsam Apple** (Mormordica)..... 5 15

**Balsam Pear**..... 5 15

**Baptisia Australis,** False Indigo, blue..... 5 25

**Bartonia Aurea**..... 10 15

**Begonia, Single Tuberos Rooted,** finest mixed..... 50

**Double Tuberos Rooted**..... 50

**Erfordia.**—A splendid bedder. Blooms all summer. 1-16 oz., 75c.; 25

**Vernon.**—Splendid bedder..... 1-16 oz., 40c.; 10 4 50

" **Dwarf,** new, grows only 5 inches high, blooms all

summer, and is excellent for ribbon, carpet bedding, and pots... 25

**Rex Hybrids.**—Saved from a very fine collection..... 50

### BELLIS, OR DOUBLE DAISY.

**VAUGHAN'S MAMMOTH MIXED.**—For size of flowers, these have no equal. The flowers measure from  $1\frac{1}{2}$  to 2 inches in diameter, besides being of the most perfect form, very double, and ranging in colors from the finest snow-white to pink and blood-red, with the most pleasing combinations of pink and white. Trade pkt., 25c.; 1-16 oz., 40c.

**MAMMOTH DAISY, WHITE.**—Flowers are much larger than those of the well-known Snowball, double, and borne on long, very stiff stems. Trade pkt., 25c.; 1-16 oz., 50c.

**NEW MAMMOTH DAISY, PINK.**—*Bellis Perennis Maxima Rosea Pl.* This is a great improvement on "Daisy Longfellow," flowers being much larger, very double, and are borne on stiff, thick stems. A very good novelty. Trade pkt., 25c.

**DAISY** (*Bellis Perennis fl. pl.*), double extra mixed...  $\frac{1}{2}$  oz., 40c.; .15 \$2 50

Fine mixed.....  $\frac{1}{2}$  oz., 25c.; .10 1 50

**Albus Plenus,** double white.....  $\frac{1}{2}$  oz., 35c.; .15 2 00

"**Longfellow,**" dark rose.....  $\frac{1}{2}$  oz., 35c.; .15 2 00

"**Snowball,**" double white.....  $\frac{1}{2}$  oz., 40c.; .15 2 50

**Bidens Atrosanguinea** (*Dahlia Zimpani*) a good cut flower..... 10 60

**Sulphurea** (*Yellow Cosmos*)..... 10 60

**Blue Daisy.**—See *Agatheia*.

**Bocconia Japonica,** Plume Poppy, 5 feet high .....  $\frac{1}{2}$  oz., 20c.; 10

**Brachycome Iberidifolia,** Swan River Daisy, blue ..... 10 60



### Vaughan's New Upright White Branching Aster.

In habit of growth this new Aster resembles the Truffaut Peony-flowered type, but the plants grow from 10 to 12 inches taller. The flowers are large, very double, pure white, and of the true "Simple" type. The plants grow about 30 inches high, and produce from twenty to twenty-five flowers, which are borne on stems from 20 to 25 inches long. Its upright habit admits of close planting, and it will attain full growth when set only 10 to 16 inches apart. The growing of many plants in a small space is a decided advantage when raised under glass. Per oz., \$1 00;  $\frac{1}{2}$  oz., 60c.;  $\frac{1}{4}$  oz., 35c.





**NEW LARGE-FLOWERING BROWALLIA.**

*Browallia Speciosa Major.*

This new sort is without a doubt the most beautiful of all the Browallias. The plants grow only about a foot high, form dense little bushes, which are covered with an abundance of the most delightful sky-blue flowers, much larger than those of the other varieties. For beds, borders or pots there is hardly another plant with blue flowers that compares with it.

Trade pkt., 25c.	Trade Pkt.	Oz.
<b>Browallia</b> , mixed.....	¼ oz., 20c.;	10 50
<b>Bryonia</b> Alba, hardy climber.....	10	25
Dioica, with red berries.....	15	60
<b>Bupthalmium</b> Salicifolium, yellow, blooms all Summer.....	15	60



**GIANT HYACINTH  
FLOWERED CANDYTUFT.**

**CALCEOLARIA HYBRIDA.**

Our mixture is composed of the choicest selections of the tigered, marbled, spotted and variegated varieties and, we know, will give entire satisfaction. Trade pkt. (1000 seeds), 50c.; 3 trade pkts. for \$1.25.

**Calceolaria Rugosa**, Shower of Gold, yellow. Trade pkt., 50c.

<b>CALENDULA</b> (Pot Marigold), Meteor.....	lb., 60c.;	5	10
Sulphurea Plena, double sulphur yellow.....		5	10
Prince of Orange, bright orange.....	lb., 60c.;	5	10
<b>Orange King</b> , Grandiflora fl. pl., best.....	lb., 80c.;	5	10
Pongei fl. pl., double white.....		5	15
Mixed.....		5	10
<b>CALLIOPSIS</b> , mixed.....		5	10
<b>Dwarf Sorts</b> , mixed.....		5	20
Double mixed.....		10	40
Golden Wave, a good cut-flower.....		5	15
<b>Lanceolata</b> , yellow, perennial, good cut-flower.....		10	30
<b>Callirhoe</b> Involuerata, Poppy Mallow, crimson and white.....		10	40
<b>Campanula Calycanthema</b> (Canterbury Bell), Cup and Saucer, mixed.....	¼ oz., 25c.;	10	1 00
Media, single mixed.....		5	20
" double mixed.....		10	50
Carpatica, Hair Bell, blue.....		5	30
" Alba, white.....		10	35
Macrantha, blue, large flower.....		10	50
Pyramidalis, Chimney Hairbell, blue, 5 feet.....		10	50
" Alba, white.....		10	60
Perennial sorts, in fine mixture.....		10	40
<b>Canary Bird Vine</b> (Tropæolum peregrinum).....	lb., \$1.75;	5	15

**CANDYTUFT.**

<b>NEW GIANT HYACINTH-FLOWERED</b> , Pure white, better than Empress.....	Trade pkt.	Oz.
<b>Empress</b> .—Our strain of [this is extra fine.....	lb., \$1.50;	10 20
<b>Snowflake</b> .—The plant grows about 7 inches high, forming a very neat, round bush, covered with the finest flowers of the purest white. They are most valuable for pot culture, carpet beds and groups.		10 30
<b>CANDYTUFT</b> (Iberis) <b>White Rocket</b> .....	lb., 60c.;	5 10
<b>Tom Thumb</b> , white.....		5 15
Carmine.....		10 25
Crimson.....		5 10
Odorata, white, sweet-scented.....		5 10
<b>Mixed Colors</b> .....	lb., 60c.;	5 10
Sempervirens, Perennial.....		10 50
<b>Tenoriana</b> , larger than above, earlier.....		10 30
Gibraltarica, large flowers, lilac shading off to white.....	¼ oz., 50c.;	20 1 50

**CANNA. CROZY  
VARIETIES.**

Saved from our Collection at Western Springs'

	100 Seeds-
Florence Vaughan, yellow; spotted red.	
1000 seeds, \$1.00.....	15
Midway, vermilion.....	15
Mad. Crozy, scarlet with gold edge.....	15
Robt. Christie, vermilion scarlet.....	25
Dwarf Florence Vaughan, 2½ feet.....	25
Francois Gos, clear orange.....	30
Cuba Libre, blood-red with gold edge.....	20
Mlle. Berat, pink.....	50
Philadelphia, best dark red.....	25
Egandale, best bronzed-leaved.....	25
Beaute Poitevine, rich red.....	25
Sam. Trelease, red and gold.....	25
Sce'y Chabanne, beautiful orange.....	20
Chas. Henderson, dark red.....	15
The Burlington, orange-scarlet.....	15
Yellow Crozy, best yellow.....	20
Chicago, best red.....	1000 seeds, \$1.00; 15
Triumph, better than Flamingo.....	30
Pres. Cleveland, a fine red.....	25
Martha Washington, pink.....	50

**VAUGHAN'S Mixture of New Cannas.**

This is a mixture of the following new varieties: Francois Gos, orange; Sam. Trelease, red and gold; Secretary Chabanne, salmon-rose; Yellow Crozy, yellow; Chicago, vermilion-scarlet; Inglewood, bronzed-leaved; Dwarf Florence Vaughan, yellow-spotted scarlet; Beaute Poitevine, blood-red, and five other choice new sorts. Our packages contain two seeds of each of the above kinds, and grand results may confidently be expected from this seed.

Trade pkt. (50 seeds), 25c.

**Crozy Varieties, Mixed.**—100 seeds, 15c.;

¼ lb., 35c.; lb., \$1.25.

**Crozy Sorts, bronzed-leaved, mixed,**  
100 seeds, 25c.; 500 seeds, \$1.10; 1000 seeds, \$2.00.

**Carnation**, Riviera Market, a splendid sort for Winter blooming; comes true from seed and blooms the first Summer..... 50

**Perpetual or Chabaud**, extra choice mixed..... 25 2 50

**Mme. Guillaud**, double yellow..... 50

**Fine**, double mixed..... 25 75

**Extra choice mixed**..... 25 1 50

**Vienna Dwarf**, hardy with a little protection and bloom early. A splendid sort for open ground culture..... ¼ oz., 25c.; 10 75

**Grenadin**, excellent for Florists' use; flowers salmon-red..... 10 1 50

**Grenadin White**, a splendid double white, comes true from seed..... ¼ oz., 40c.; 20

**Margaret**, blooms in four months from seed..... ¼ oz., 25c.; 10 75

**New Dwarf Margaret**, an improvement on the above, flowers larger, more double and better colors, plants shorter and more stocky, and the stalks stiff and wiry, mixed colors..... 25 2 00

**Giant Margaret**, mixed..... ¼ oz., 60c.; 25

**Margaret Giant White**, flowers very large and double. Pure white, with only an occasional pink streak; plants short and stocky, with stiff spikes..... 1-16 oz., \$1.50; 50

**Margaret**, yellow, white, pink, red or striped..... each, 15

**VAUGHAN'S CARNATION MIXTURE.**

This is a mixture of the best strains of Giant Margaret, Malmaison and Ever-blooming Chabaud Carnations, including the latest selections of yellow types. The plants will produce many flowers that are equal to the best cut-flower sorts. Such a mixture cannot be had elsewhere.

Trade pkt. (300 seeds), 25c. Trade pkt. Oz.

**CASTOR BEANS** (Ricinus) mixed colors..... per lb., 40c.; 5 10

Sanguineus, dark foliage..... per lb., 40c.; 5 10

Giganteus..... 5 10

Borboniensis Arboreus, large sort..... per lb., 60c.; 5 10

**Cambodgensis**, new, very dark leaves and stalks...lb., \$1.50; 5 15

**New Zanzibar**, immense large leaves, mixed..... per lb., 60c.; 5 10

" " **ENORMIS**, largest..... 10 20

**CELOSIA. (Coxcomb.)**

**President Thiers**.—This is the splendid variety which is so much and effectively used in our parks. Our strain has been carefully selected, seed being saved only from plants less than 8 inches high, with perfect combs and of the very deepest velvety crimson and can be entirely depended upon. Sow seeds early. Pkt., 15c.; ¼ oz., 40c.

**CELOSIA, Dwarf Sorts** mixed, extra choice..... Trade Pkt. Oz.

**Dwarf Empress**, very fine and large; crimson..... 25 1 00

**Tall Sorts** mixed..... 5 50

**Ostrich Plume**, orange or crimson..... each, 15

Triumph of the Exposition..... 10 50



CENTAUREA MARGARET.

	Trade Pkt.	Oz.
<b>CENTAUREA Candidissima</b> (Dusty Miller). 1000 seeds	\$0 25	\$1 00
<b>Gymnocarpa</b> .....	10	40
<b>Clementi</b> .....	10	65
<b>Cyanus</b> (Bachelor's Button), mixed.....	5	10
"    "Emperor William," blue corn-flower.....	lb., 85c;	5 10
<b>Cyanus Alba</b> , new, pure white, an excellent cut-flower.....	5	20
" <b>fl. pl.</b> , double corn-flower.....	5	15
" <b>Victoria</b> , dwarf blue.....	10	60
<b>Suaveolens</b> , double yellow, good cut-flower.....	10	35
<b>Americana Alba</b> , new.....	15	75
<b>Odorata</b> "Chameleon".....	20	
<b>Margaret</b> .....	15	1 00

**New Giant Imperial Centaurea.**

*Centaurea Imperialis.*

This new Centaurea, a cross between *C. Moschata* and *Margaret*, represents the best that has been produced in these beautiful Summer-blooming plants. The bushes are about 4 feet high, of enormous dimensions and are covered with large, beautiful flowers of the same form and fragrance of *Centaurea Margaret*. The flowers will keep for over a week in water, if cut just when they are about to open. It is of easiest culture, which cannot be said of *C. Margaret*. The color variation is very great, almost infinite. When well known there will be no garden without this beautiful new flower. Pkt., 15c.; oz., \$1.00.

	Trade Pkt.	Oz.
<b>Centaurea Imperialis, White</b> .....	25	
"    " <b>Pink</b> .....	25	
<b>CENTROSEMA Grandiflora</b> .....	10	60
<b>CERASTIUM</b> Biebersteini, 6 inches.....	10	
Tomentosum, 6 inches, silvery foliage.....	25	
<b>CHELONE</b> Hybrida, mixed.....	10	30
<b>CHRYSANTHEMUM</b> Frutescens (Paris Daisy).....	10	65
<b>Maximum "Perfection"</b> , large Ox-eye Daisy, white.....	10	50
<b>Indorum Plenissimum</b> , double, snow-white, one of the best for cut-flowers; an abundant bloomer.....	10	65
<b>Coronarum</b> , double white, annual sort for cut-flowers.....	5	10
"    "    double yellow.....	5	10
<b>Uliginosum</b> , perennial, white.....	10	1 00
Annual Varieties, mixed.....	5	10

**CINERARIA HYBRIDA.**

**Vaughan's International Mixture.**

Like our Pansy mixture of that name, this strain has given universal satisfaction. It consists of a mixture made up by ourselves of the choicest English, French and German strains and cannot be excelled in variety of colors, size, shape and substance of flowers and perfect habit of plant. Trade pkt., (5000 seeds), 50c.; 3 pkts., \$1.25.

	Trade Pkt.	Oz.
<b>CINERARIA Hybrida</b> , fine large flowering mixed, 500 seed.	25	
<b>Hybrida Grandiflora Nana</b> , best mixed, dwarf.....	25	
<b>Hybrida Plenissima</b> , extra choice double.....	50	
<b>White Leaved Variety.</b>		
<b>Maritima Candidissima</b> , white-leaved for bedding.....	10	20

**CLEMATIS COCCINEA HYBRIDA.**

A cross between *C. Coccinea* and Jackmani varieties, retaining the shape of the flower of *Coccinea* to a certain extent, but larger. In color they range from pure white to the deepest scarlet, passing through all tones of violet, blue and pink. Our mixture is extra choice. Pkt., (50 seeds) 25c.

<b>CLEMATIS.</b>		
<b>Largest Flowering</b> , selected hybrids of <i>Lanuginosa</i> and Jackmani types, seed saved from no flower measuring less than 1 foot in circumference.....	20	1 50
<b>Paniculata</b> .....	15	75

	Trade Pkt.	Oz.
<b>CLIANTHUS Dampieri</b> , Glory Pea of Australia, 1/2 oz., 60c.; \$0 15		
<b>CLITORIA Ternatea</b> , blue; climber.....	10	\$0 50
<b>COBÆA Scandens</b> , purple.....	10	30
Scandens Flore Albo, white.....	15	85
<b>COBÆA Macrostemma</b> .—A rare new sort, flowers light green, tipped violet, with long stamens. The foliage is good and the plant is a rapid climber.....	10	

**COLEUS, Mammoth Rainbow.**

For brilliantly colored foliage these have no equal. The Coleus seed we offer is saved from the finest collections in Europe. The result of this seed will surprise all, as most of our customers have no idea what beautiful pot plants these new Coleus make. Sow the seed now and have plants when the Spring trade opens. Our mixture contains the new lacinated, fimbriated and mammoth-leaved sorts. Trade pkt., 50c.

<b>COLEUS</b> , a very fine mixture.....	1/2 oz., 65c.;	10
<b>COMMELINA Cœlestis</b> , blue.....		10
<b>CONVOLVULUS</b> , tri-colored mixed; Dwarf Morning Glory.....	5	10
Mauritanicus, for hanging baskets.....	10	50
<b>Major</b> , mixed; Morning Glory.....	Lb., 35c.;	5 10
<b>COREOPSIS</b> Lanceolata. Fine cut flower.....	10	30
<b>CORYDALIS Aurea</b> , pretty tufts; profuse bloomer.....	10	
<b>COWSLIP.</b> ( <i>Primula veris elatior</i> ).....	10	80
<b>COSMOS, Improved Hybrids.</b> All colors mixed, Lb., \$1.60;	5	15
Pure White "Pearl," or Pink, each.....	5	15
<b>Dwarf Early-Flowering Varieties.</b> —Mixed.....	10	30
<b>Dwarf, Early-Flowering Cosmos "Dawn."</b> —This comes into flower early in Summer and continues to bloom until frost. The flowers are large and of most beautiful white, with just a touch of delicate pink at the base of the petals. It is a decided, most attractive and useful novelty.....	10	40
<b>CUPHEA Platycentra</b> .....	1-16 oz., 40c.;	15

**VAUGHAN'S GIANT-FLOWERED CYCLAMEN.**

Our seed has been grown for us by a Cyclamen specialist in Europe. This is the third season we are handling his entire crop. The seed is saved only from perfect plants. Shape and size of flowers, foliage and stems and general habit are points on which our seed plants are selected. There is no better Cyclamen seed in the market.

<b>PURE WHITE</b> (Mont Blanc).....	} 100 seeds. 1000 75c. \$5.00 250 seeds at the 1000 rate.
<b>DARK CRIMSON</b> .....	
<b>ROSAVON MARIENTHAL</b> , "Daybreak".....	
Piuk.....	
<b>DARK ROSE</b> .....	
<b>WHITE WITH CARMINE EYE</b> .....	

**NEW FRINGED WHITE.**—This is a selection made from the Mont Blanc, the flowers are larger, pure white with the edges of the petals undulated and somewhat fringed. A very beautiful flower.

Per 100 seeds, \$1.25; per 1000, \$10.00.

**BLOOD-RED.**—The flowers of this sort are not quite as large as those of above but they are produced even more freely while the color is of the deepest blood-red, very striking.

Per 100 seeds, \$1.25.

**Giant-Flowered Cyclamen. Extra Choice Mixed.**—This mixture is made up from the above separate colors and includes also some "Monstrosum," a strain with flowers of immense size, secured especially for this mixture. Per 100 seeds, 50c.; 250 seeds, \$1.15; 1000 seeds, \$4.50; 5000 seeds, \$20.00.

**Cyclamen Persicum.**—Finest mixed. Trade pkt., 25c.; 1/4 oz., 70c.

<b>CYPERUS Alternifolius.</b> (Umbrella Plant).....	1/2 oz., 40c.;	20
<b>CYPRESS VINE</b> , scarlet, white or pink.....	each,	5 15
<b>Mixed Colors</b> .....	5	15
<b>DAHLIA Gracilis</b> , striped and mottled.....	10	75
<b>Gracilis Nana</b> , dwarf plants about 24 inches high, with handsome spotted and striped single flowers.....	10	1 00
<b>Single</b> , best mixed.....	10	35
<b>Double</b> , best mixed.....	25	1 50
Double Mixed, good quality.....	10	80
Double Cactus-Flowered, mixed.....	25	2 50
<b>Dwarf Double Cactus-Flowered</b> , mixed.....	25	
<b>Single Cactus-Flowered</b> , mixed. Good cut-flower.....	15	
<b>New Single Perfection</b> , immense flowers, good colors.....	15	1 00
<b>Vaughan's Best Dahlia Mixture</b> , includes all the above and others.....	1/4 oz., 60c.;	15 2 00
<b>DAISY.</b> —SEE BELLIS.		
<b>DATURA</b> Fastuosa fl. pl., double mixed.....	10	25
Fastuosa Alba pl., double white.....	10	25
Cornucopia.....	10	75
Triple-Flowered Yellow.....	15	80
.....	10	40
<b>DELPHINIUM.</b> Elatum Hybridum, mixed.....	10	60
Formosum, blue, 3 feet.....	25	1 75
"    Cœlestinum, sky-blue.....	10	25
Chiensis, double and single mixed, 2 feet.....	1/2 oz., 40c.;	25
New Double Hybrids, mixed; very choice.....	15	
Nudicaule, scarlet.....	10	25
Many varieties mixed.....	10	25

See also Larkspur.





EDELWEISS.

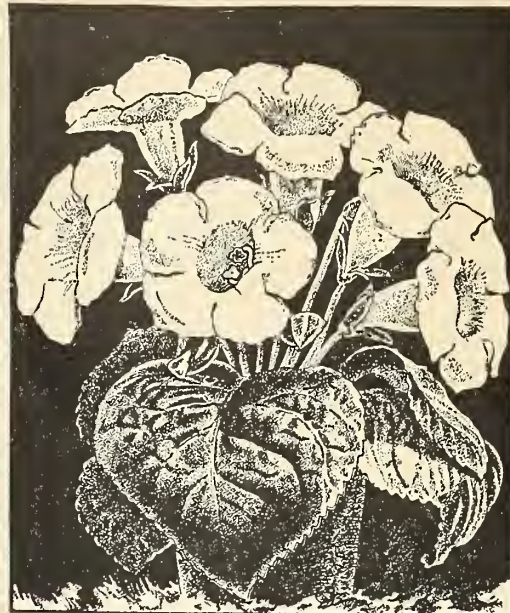
**DIANTHUS.**

**Snow Queen Pink.**

This is an extra fine selection of the large-flowering double white Japan Pink, the very best strain we have ever seen. The flowers are extremely large, often three inches in diameter and resemble a white carnation. They are produced in great abundance and are borne on long, stiff stems, which, combined with their lasting qualities, render them of the best of white cut-flowers. Trade pkt., 15c; 1/4 oz., 25c.



FORGET-ME-NOT, EARLY AND LATE FLOWERING.



GLOXINIA HYBRIDA GRANDIFLORA.

	Trade Pkt.	Oz
<b>DIANTHUS.</b> Double Chinese Pink, best mixed.....	5	20
Chinensis Albus pl., double white.....	5	30
Nanus Albus Pl., dwarf double white.....	10	45
Double Dwarf Mixed.....	10	45
<b>Heddevigi fl. pl.</b> Double Japan, mixed.....	10	60
Single mixed.....	10	40
Eastern Queen.....	10	45
Crimson Belle.....	10	40
Diadematus fl. pl., (Diadem Pink).....	10	65
Mourning Cloak, double.....	10	65
<b>Midnight</b> , double blood-red.....	10	80
The Bride, single white.....	10	50
Double Striped.....	10	80
Snowball.....	10	60
Fireball.....	10	60
Salmon Queen.....	15	1 00
<b>Laciniatus fl. pl.</b> Double mixed.....	10	75
Single mixed.....	10	35
<b>Double Imperial Pink.</b> Mixed.....	5	25
Plumarius fl. pl., double, Pheasant's Eye Pink.....	20	1 25
" "Cyclops," extra fine.....Per 1/4 oz., 50c;	25	2 00
" "Single.....Lb., \$1.65	5	15
Barbatus.—See SWEET WILLIAM.		
<b>DICTAMNUS</b> Fraxinella. Gas Plant, purple.....	10	50
Var. Alba. Pure white.....	20	75
<b>DIGITALIS</b> Grandiflora, Golden Foxglove, dwarf.....	10	30
<b>DRACÆNA</b> Indivisa.....Lb., \$2.50;	10	30
Indivisa Lineata.....Lb., \$2.00;	10	30
Indivisa Latifolia.....	10	60
Australis.....	25	1 50
<b>ECHEVERIA</b> , mixed, many varieties.....	100	seeds, 25c.
<b>ECHINOPIUS</b> Ritre, blue, for bees.....	10	30
<b>EDELWEISS</b> , Leontopodium alpinum.....	1/8 oz., 50c;	15
<b>ERYTHRINA</b> Crista Galli, Coral Plant.....	100	seeds, 15c;
<b>ERIGERON</b> Aurantiacus, orange.....	25	
Glabellus, blue.....	10	30
<b>ESCHOLTZIA</b> , many colors mixed.....	5	15
<b>EULALIA</b> Zebrina, Ornamental Grass.....	1/4 oz., 25c.;	10
Japonica, Ornamental Grass.....	1/4 oz., 25c.;	10
<b>EUCHARIDIUM</b> Breweri.....	10	
<b>EUPATORIUM</b> Fraseri, white, good for bouquets.....	15	
<b>EUPHORBIA</b> Heterophylla (Mexican Fireplant).....	20	1 25
Corollata, white, 2 feet.....	25	

**FERN SEEDS.**

Any of the following, per trade pkt., 40c.; any 6 kinds for \$2.00.

<b>Adiantum</b> Cuneatum.	<b>Pteris</b> Argyrea.
Fragrantissimum.	" Cretica Alba Lineata.
Gracillimum.	" Mayi.
<b>Asplenium</b> Nidus Avis, Bird's Nest Fern.	" Longifolia.
<b>Cyrtotium</b> Falcatum.	" Ouvrardi.
<b>Lomaria</b> Gibba.	" Palmata.
<b>Lygodium</b> Scandens.	" Serrulata.
<b>Nephrolepis</b> Cordata Compacta.	" " Cristata.
" Exaltata.	" " Argentea.
	" Tremula.
	" Wimsettii, new, extra fine.
	Onychium Japonicum.
<b>FEVERFEW</b> , double white, for cut-flowers, trade pkt., 10c.; oz., 25c.	

**Vaughan's Early and Late Flowering Forget-Me-Not.**

This sort will bloom in six to eight weeks after sowing, and will bring forth its flowers throughout the whole summer and fall and continue through the winter if taken up and potted. The flowers are borne on long, stiff stems, are of most exquisite sky-blue with a delicate white center, and they furnish the best cut-flowers. They are satisfied with moisture and a somewhat shaded position. Trade packet, 15c.; 1/4 oz., 50c.

	Trade pkt.	Oz.
<b>FORGET-ME-NOT</b> (Myosotis), Alpestris, blue.....	10	40
Alpestris Alba, white.....	10	50
Eliza Fanrobert, flowers very large, sky-blue.....	10	60
<b>Victoria</b> , valuable for cut-flowers and pot culture.....	10	1 00
<b>Dissitiflora</b> , one of the best for florists.....	1/8 oz., 40c;	25 50
Palustris Semperflorens.....	20	00
<b>Water Nymph</b> , new.....	25	
<b>FOUR O'CLOCK</b> , (Mirabilis, or Marvel of Peru) mixed....lb., 40c.;	5	10
New Dwarf Mixed.....	5	10
Longiflora Alba, sweet scented.....	5	20
<b>FOXGLOVE</b> (Digitalis), mixed.....	5	20
<b>FREESIA</b> Refracta Alba, seedlings bloom the first year.....	10	30
<b>FUCHSIA</b> , Double and single varieties mixed.....	250	seeds, 60c.
<b>GAILLARDIA</b> Lorenziana, double mixed.....	10	20
Perennial varieties, splendid mixed.....	10	40
<b>GENTIANA</b> Acaulis, dark blue.....	10	10
<b>GERANIUM</b> , Apple scented.....	250	seeds, 50c.; 1000 seeds, \$1.30;
<b>Zonale</b> , mixed.....	10	50
Lady Washington.....	100	seeds, 65c.
<b>GEUM</b> Atrosanguineum Fl. Pl., double scarlet, fine for bouquet.....	10	50

**GLOXINIA HYBRIDA.**

**Gloxinia Seed, Vaughan's Mixture**, is made up by ourselves from the choicest spotted, tigered, edged, marbled and splashed sorts of the upright and horizontal type, and includes such choice new sorts as Emperors William and Frederick, Princess Louise, Defiance, etc., and we know that better seed is not to be had at any price. Pkt. (1,000 seeds), 50c.; 3 pkts. for \$1.25.

<b>GLOXINIA</b> , Scarlet Defiance, intense glowing crimson scarlet.....	35
<b>GLAUCIUM</b> luteum, Horned Poppy.....	5 20
<b>GLOBE AMARANTH</b> . Mixed.....	5 20
" red.....	5 20
<b>GLOBULARIA</b> Tricosantha, Globe Daisy, blue.....	10 60
<b>GODETIA</b> , many sorts mixed.....	5 15
New Dwarf Hybrids, mixed.....	10 15
<b>GOLDEN FEATHER</b> . See PYRETHRUM.	
<b>GOURDS</b> . Many varieties mixed.....	5 10
<b>GREVILLEA</b> Robusta (Silk Oak).....	10 40
<b>GYPSOPHILA</b> (Fine for bouquets) Paniculata, white.....	5 15
Elegans, white.....	5 10
pink.....	5 10
<b>GYMNOTHRIX</b> Latifolia, Ornamental Grass.....	10 50
<b>HEDYSARUM</b> Corouarium, mixed, French Honeysuckle.....	5 10
<b>HELIANTHUS</b> (Sunflower) Cucumerifolius or Miniature.....	5 15
Argophyllus, leaves are clothed with silvery down.....	5 15
Nanus foliis variegatis, green and yellow foliage.....	15 20
Californicus fl. pl.....	5 10
<b>Cucumerifolius "Stella"</b> , new, good cut-flower.....	15 25
<b>New Chrysanthemum-Flowered</b> .....	5 20
<b>HELENIUM</b> Hoopesi, deep orange yellow, 3 feet.....	10 45

	Trade pkt.	Oz.
<b>HERACLEUM</b> , mixed, tall, decorative.....	5	25
<b>HELICHRYSUM</b> (Everlasting), all sorts mixed.....	5	25
Dwarf Sorts, mixed.....	5	35
<b>HELIOTROPE</b> , King of the Blacks.....	10	
Anna Turrell.....	15	
All colors mixed.....	10	75

**HELIOTROPE, Lemoine's Giant.**

*Blooms from seed the first year, and as early as sweet peas or Balsams.*

Heliotropes will bloom as easily from seed as any of the common annuals. Sow the seed in February or March, and blooming plants may be had at the planting season. Our packets contain over 100 seeds and include the very best sorts. Trade pkt., 15c.; ¼ oz., 50c.

	Trade pkt.	Oz.
<b>HESPERIS</b> Matronalis (Sweet Rocket), mixed.....	5	10
<b>HEUCHERA</b> Sanguinea.....	1/8 oz., 30c;	15
<b>HIBISCUS</b> , Giant Yellow or Sunset.....	15	60
<b>Crimson Eye</b> .....	10	35

NEW MAMMOTH FLOWERING.....

**Allegheny Hollyhocks.**

Bloom the First Year from Seed. \* \* \*

A New Type of Hollyhocks.

The flowers of this new variety are so different from the Chater's that but for the similar habit of the plant it would not be taken for a Hollyhock. They are from four to six inches in diameter, running from semi-double to double, and are finely fringed and curled. The colors are shell pink, rose and ruby red, a shade or two deeper at the center, and exquisitely tinted toward the edge. The flowers do not, as on the double Hollyhocks, rot on the stems, but drop as soon as they fade. Every bud to the top of the plant is developed into flowers, making the flowering season considerably longer. Trade pkt., 15c.; ¼ oz., 40c.; oz., \$1.25.

**CHATER'S PRIZE HOLLYHOCKS.**

Our seed of this has been saved from the finest and largest double flowers only, and will produce flowers extremely double and in the best, brightest, and most distinct colors.

- Double Pure White, oz., \$1.00; ¼ oz., 25c.
- Lemon Yellow, Pink, Blood-Red, Deep Rose, Salmon-Crimson, each, per oz., \$1.00; ¼ oz., 25c.; trade pkt., 10c.
- Chater's Hollyhocks, best double mixed, per oz., \$1.00; trade pkt., 10c.
- Double Hollyhocks, good mixture, oz., 60c.; ¼ oz., 20c.; trade pkt., 5c.

	Trade pkt.	Oz.
<b>HUMULUS</b> Japonicus, Japanese Hop.....	5	25
Japonicus Pol. Var., variegated.....	10	40
<b>IBERIS</b> , See Candytuft.....		
<b>ICE PLANT</b> (Mesembryanthemum cristallinum).....	5	15
<b>HUNNEMANNIA</b> Fumariaefolia. Fine cut-flower.....	10	10
<b>IMPATIENS</b> Sultani.....	1-32 oz., 70c;	25
Sultani, new Hybrids, mixed.....	1-32 oz., 70c;	25
<b>IPOMOEA</b> Noctiflora, Moonflower, white seeded.....	10	40
Leari, a good seller, blue.....	20	1 00
Bona Nox.....	5	10
<b>Setosa</b> , Brazilian Morning Glory.....	10	40
Rubra Cœrulea.....	10	40
<b>Imperialis</b> , New Giant Japanese Morning Glory.....	1b., \$1.50;	10
"New Hybrid" Moonflower. Blooms early.....	15	60
<b>LANTANA HYBRIDA</b> , finest mixed.....	10	25
<b>Bruant's Dwarf Hybrids</b> .— <i>Lantana Hybrida Grandiflora Nana Bruantii</i> . As its name indicates, this new strain produces dwarf, bushy plants, while its colors are superior to those of the old type.....	1/2 oz., 35c;	15
<b>LARKSPUR</b> , Emperor, Mixed.....	5	20
Emperor, white, good cut-flower.....	5	25
Double Dwarf Rocket, mixed.....	5	10
Double Tall Rocket, mixed.....	5	10
<b>LATHYRUS</b> Latifolius (Everlasting Pea), mixed.....	1b., \$1.50;	10
Latifolius Albus, white.....	5	15
" Red.....	5	15

	Trade pkt.	Oz.
<b>LEMON VERBENA</b> , Aloysia Citriodora.....	1/4 oz., 40c;	10 1 25
<b>LINARIA</b> Cymbalaria (Ktnilworth Ivy).....	1/4 oz., 40c;	15
<b>LINUM</b> Grandiflorum Rubrum.....	5	10
Perenne, Perennial Flax, blue, 2 feet.....	5	25
Perennial Sorts, mixed.....	5	25

**LOBELIA "BEDDING QUEEN."**

*Lobelia erinus pumila splendens.*

This new variety is undoubtedly the most remarkable and magnificent of the dwarf Lobelias. The habit of the plant is very dwarf and compact, forming handsome little bushes which are entirely covered with large flowers of deepest purple, contrasting most charmingly with the pure, white eye. Its freedom and duration of bloom is remarkable, the flowers lasting until late in the fall. The best Lobelia for carpet beds, borders and pots. Trade pkt., 25c.; ¼ oz., 60c.

<b>LOBELIA, Crystal Palace Compacta</b> .....	1/8 oz., 25c,	15 1 50
<b>Speciosa</b> , dark flowers and foliage; for hanging baskets.....	10	75
<b>Erinus, Emperor William</b> , dwarf.....	1/8 oz., 25c;	10 1 25
Dwarf White, White Gem, a good seller.....	1/8 oz., 25c;	10
Erinus white.....	10	50
Gracilis, blue.....	10	40
Mixed.....	10	50
Cardinalis (perennial).....	20	1 50

**Ramosa, "HEAVENLY BLUE."**

The beautiful plants grow in neat, compact bushes from 9 to 12 inches in height, producing flowers almost one inch in diameter of the most delightful blue. It is a very useful and handsome plant, either for pots or for mixed borders. Pkt. (350 seeds), 10c.; 3 pkts. for 25c.

<b>LOPHOSPERMUM</b> Scandens.....	20	
<b>LUPINUS</b> . Annual sorts mixed. Tall varieties.....	5	10
Annual sorts mixed. Dwarf varieties.....	5	10
Grandifolius, purple.....	5	10
Polyphyllus, mixed.....	5	15
Subcarnosus, dwarf, beautiful blue.....	10	25
<b>LYTHRUM</b> Roseum Superbum, long spikes of blue flowers, 4 ft.....	10	25
<b>LYCHNIS</b> Chalcedonica, Lamp Flower, scarlet.....	10	25
Haageana, mixed.....	10	50
<b>MALVA</b> Moschata, sweet-scented; pink.....	10	10
Moschata Alba, white.....	10	10
<b>MARGOLD</b> , Double Tall African, mixed.....	5	15
<b>Eldorado</b> , a fine strain.....	5	20
Lemon Queen.....	5	20
Pride of the Garden.....	5	30
Double Dwarf French, gold striped.....	5	20
<b>Double Dwarf French, Mixed</b> .....	5	15
Legion of Honor.....	5	20
<b>MARVEL OF PERU</b> (Four O'Clock), mixed.....	1b., 35c;	5 10
<b>MATHIOLA</b> Bicornis, Evening Scented Stock.....	5	20
<b>MATRICARIA</b> Capensis fl. pl., Double White Feverfew.....	10	25
<b>MAURANDYA</b> , mixed.....	1/4 oz., 40c;	15 1 25

**MIGNONETTE.**

	Trade pkt.	Oz.	<b>New Red Mchet</b> .....	20	1 00
Allen's Defiance.....	15	75	Red Victoria.....	10	35
" Greenhouse.....	15	75	Miles' Spiral.....	5	15
grown stock.....	25	1 50	Nana Compacta Multiflora.....	10	25
Grandiflora, large flowering.....	1b. 40c;	5	<b>Gabriele</b> , extra large and sweet.....	10	40
".....	1b. 40c;	5	<b>Giant Pyramidal</b> .....	5	20
Parson's White.....	5	25	Golden Queen.....	10	40
Golden Queen.....	5	20	Red Giant.....	10	40
May's Giant.....	10	1 00	Giant White Spiral.....	10	25
New Golden Mchet.....	10	50	Many sorts mixed.....	5	15

**New Mignonette "Silver White."**

It has been the endeavor of every seed grower to produce a pure white Mignonette, that has large flowers and is sweet-scented. In this we have the best White Mignonette to date which possesses the above qualities. From 60 to 70 per cent. of the plants will come true. Pkt., 20c.; ¼ oz., 50c.

**New Mignonette "Bismarck."**

Our Mchet has a very good reputation and is the best strain in existence. This new sort is an improvement on it, both in color and size of flower, and we want every florist to try it. Pkt., 15c.; ¼ oz., 50c.



LOBELIA RAMOSA, HEAVENLY BLUE.



MIGNONETTE, MCHET.



LOBELIA, BEDDING QUEEN.





	Trade Pkt.	Oz.
<b>Physalis Francheti</b> , Chinese Lantern Plant.....	10	50
<b>PLATYCODON Mariesi</b> .....	¼ oz., 40c.; 15	
<i>Mariesi</i> (ore albo).....	½ oz., 50c.; 20	
<b>Poinsettia Pulcherrima</b> , blooms better from seed than from cuttings, and the first year.....	25 seeds, 25c.; 100 seeds, 85c.	
<b>PORTULACCA</b> , single, white, rose, golden, scarlet.....	each, 10	40
Single large flowering sorts, mixed.....	10	30
Double " " finest mixed.....	25	2 25
Double " " good mixed.....	15	1 50
<b>PYRETHRUM Golden Feather</b> .....	¼ oz., 15c.; 10	40
<i>Selaginoides</i> , fern-leaved.....	15	1 00
<i>Roseum</i> , single mixed.....	¼ oz., 35c.; 10	
" Hybridum, fl. pl., double mixed.....	35	
<i>Uiginosum</i> , large, white, single, 6 feet.....	10	70
<b>Rheum Palmatum Tanguticum</b> , beautiful brown-red leaves, excellent lawn plant.....	10	30
<b>Rhodanthe</b> , mixed.....	10	75
<b>RICINUS Sanguineus</b> .....	5	10
<i>Zanzibarensis</i> , Giant Zanzibar, mixed.....	1b., 60c.; 5	10
" <b>Euornis</b> , largest.....	5	10
<i>Cambodgensis</i> , very dark.....	5	15
<i>Giganteus</i> .....	5	10
<i>Borboniensis Arboreus</i> .....	5	10
<b>Salpiglossis</b> , large-flowering, mixed.....	5	50

**PRIMULA SINENSIS.—Chinese Primroses.**

Send for our List of Primulas in separate colors, ready in May.

<b>NEW GIANT PRIMULAS</b> , mixed, pkt., (150 seeds,).....	50c.
<b>PRIMULA mixed</b> , a splendid variety, 350 seeds, 25c.; 1,000 seeds, 70c.;	
1-16 oz., \$1.50.	
<b>SCABIOSA</b> , tall, double large-flowering varieties, mixed.....	5 20
Double dwarf mixed.....	5 15
Double Fiery Scarlet, good cut-flower.....	10 50
<i>Caucasica</i> , lavender, 3 feet, perennial.....	½ oz., 25c.; 10
<b>SEDUM Cœruleum</b> (Stone crop).....	25 1 50
<b>Sensitive Plant</b> ( <i>Mimosa Pudica</i> ).....	10 30
<b>Smilax</b> , new crop.....	1b., \$3.00 10 30
<b>Stevia Serrata</b> .....	10
<b>SWEET WILLIAM</b> , double-flowering, mixed.....	10 40
Single-Flowering, best mixed.....	1b., \$1.25; 5 15
Double White.....	10 30
Double Blood-Red.....	10 50
Giant-Flowered, single mixed.....	10 50
double mixed.....	¼ oz., 35c.; 20 1 00
<b>Sweet Sultan</b> , <i>Centaurea moschata</i> , mixed.....	10 20
<b>Thunbergia</b> , mixed.....	10 65
<b>Torenia Fournieri</b> , charming pot plant, velvety blue flower.....	25
<b>Fournieri Compacta</b> , new.....	25
<b>White Wings</b> , new white.....	20

**Vaughan's International Primula Mixture.**

This mixture is composed of the most salable colors of Single Flowering Chinese Primulas, the best whites, pinks and reds, with a sprinkling of other colors, enough to give a large variety of colors, the most important shades predominating. It contains some of the above mentioned Giant sorts, some Fern leaved, some blue; also some with dark leaves and stems.

Pkt., 350 seeds, 50c.; 5 pkts., (1,750 seeds,) \$2 25; per 1-16 oz., \$2.50.

<b>PRIMULA Obconica</b> .....	1-16 oz., 60c.; trade pkt. \$ 25
<b>Obconica Grandiflora</b> .....	1-16 oz., 85c.; " 35
<i>Vulgaris</i> , old fashioned yellow Primrose.....	¼ oz., 40c.; " 15
<i>Japonica</i> , (Japanese Primrose).....	" 25
<i>Veris</i> ( <i>Polyanthus</i> ) fine mixed.....	½ oz., 40c.; " 15
<b>FORBESI</b> , "Baby Primrose," flowers rosy lilac, free blooming, excellent for pots, the seedlings begin to bloom 3 months after sowing. 500 seeds, 25c.	
<b>Forbesi Compacta</b> , new, 250 seeds, 25c.	
<b>Primula Obconica Grandiflora Fimbriata</b> .—This is a great improvement on the Obconica. Flowers are borne in the same profusion as on Obconica Grandiflora. The stalks are stiff, the flower heads large and well formed, while the single flowers are arranged like those of the Chinese Primula. Packet, 25c.	
<b>Primula Obconica Grandiflora Rosea</b> .—Flowers are as large as those of the Grandiflora but the color is a beautiful clear pink, which is a great improvement over the former, since that mixture contains a number of washed-out colors. It comes almost true from seed. Packet, 25c.	
<b>Primula Obconica Grandiflora Alba</b> .—The well-formed, large flowers of this variety are borne in large clusters and are of purest white with a yellow eye. For cut and pot culture this will soon be a great favorite. Comes true from seed. Packet (250 seeds) 25c.; 3 packets for 70c.	
<b>STATICE Latifolia</b> .....	5
Perennial sorts, mixed.....	5 25
<b>Stipa Penuata</b> , Feather Grass.....	10 25
<b>Swainsoni Grandiflora Alba</b> .....	100 seeds, \$1.75.
Grandiflora Alba.....	100 seeds, \$1.75.

**VERBENA.**

<b>Verbena Hybrida</b> , fine mixed.....	10 50		
Extra choice mixed.....	15 1 00		
Mammoth White.....	¼ oz., 35c.; 15 1 25		
<b>Fordhook Mammoth</b> , mixed.....	15 1 00		
	Trade pkt. Oz. Trade pkt. Oz.		
<b>Candidissima</b> , white.....	15 1 00	<b>Purple</b> .....	10 75
<b>Defiance</b> , brightest scarlet.....	10 1 00	<b>Nana Compacta</b> , dwarf mixed.....	15 1 25
Brightest.....	¼ oz., 30c.; 10 1 00	<b>Lemon</b> .....	½ oz., 25c.; 10
<b>Striped</b> .....	10 1 00	<b>Venosa</b> .....	10 25
<b>Dark Blue</b> , with white eye.....	10 1 00	<b>Lutea</b> .....	10 10
<b>Erioides</b> , deep lilac, excellent for baskets and vases.....	10 50		

For "Vaughan's Best" Mixture of Verbenas, see next page.

**STOCKS.**

The following are saved from large-flowering varieties, grown in pots, and will give from 75 to 85 per cent. double flowers.

**STOCKS Large-Flowering German Ten Weeks**

Pure. White. Brilliant Rose. Bright Crimson. Blood Red. Purple. Light Blue. Canary Yellow.

Price each of above per ¼ oz., 40c.; oz., \$2.50; pkt., 25c.

One trade pkt. each of above 7 varieties.....	\$1 25
Imported Collection of 12 varieties.....	50
Imported Collection of 6 varieties.....	25

**Large-Flowering**, extra choice mixed, ¼ oz., 35c.; trade pkt., 25c.; oz., \$2.00.

Brilliant colors only, mixed, trade pkt., 15c.; oz., \$2.25.

Good mixed, trade pkt., 10c.; oz., \$1.00.

**Fireflame**, the most brilliant red of all.....

Trade pkt. Oz. ½ oz., 60c.; 25

**Snowflake**, forcing, the earliest white

Ten weeks Stock..... ½ oz., \$1.25; 25

Red Victoria, a dark blood-red..... ½ oz., 50c.; 20

**White Victoria**, pure white, ½ oz., 50c.; 20

**White Perfection**, "Cut and Come Again"..... ½ oz., 45c.; 25

Early Intermediate (Autumnal) white or mixed..... each, 25

Emperor (Winter) white, pink, crimson or mixed..... each, 25

**Mammoth White Column**.—The plant is of luxuriant growth, attaining in the open ground a height of 3 feet, and producing only a single long and sturdy spike of bloom, closely furnished with enormous, faultlessly formed double flowers of the purest possible white. Pkt., 10c.

**SCABIOSA.**

Elegant cut-flowers, keep long, are very handsome and the colors are exceedingly fine, some flowers are almost black.

**THE SNOWBALL SCABIOSA.**

The flowers of this pretty Scabiosa are large, measuring fully 2 inches in diameter, of purest white and very double. The stems are very strong and the foliage luxuriant. This plant comes quite true from seed and is sure to be liked for vases and bouquet.

Trade pkt., 10c.; oz., 25c.



New *Salvia Splendens*, "Drooping Spikes,"

This new, large-flowering *Salvia* (Scarlet Sage) has three times the flowering capacity on each spike of the ordinary *Salvia Splendens*. The flowers are produced in great numbers, causing the spikes to droop by their weight. It is one of the most desirable plants for decorative purposes, if planted either singly, in groups, or with other plants. The flowers are of the most brilliant, dazzling scarlet, produced in endless profusion, and until late in the fall.

Trade Pkt., 15c.; 2 pkts. for 25c.; ¼ oz., 50c.

	Trade pkt.	Oz.
<b>SALVIA Splendens Compacta Erecta</b> , Clara Bedman (Bonfire).....	25	2 50
<i>Splendens</i> , Flowering Sage.....	¼ oz., 35c.; 25	1 00
" <i>Nana Compacta</i> .....	25	1 50
" <b>New Crimson</b> .....	25	
<i>Patens</i> , blue.....	100 seeds, 30c.	
<i>Argentea</i> , Silver-leaved Sage.....	10	20
<i>Nutans</i> , dark blue, very fine.....	10	



WHITE PERFECTION STOCK.

# A Selection of the Best SWEET PEAS.

If to go by mail add 2c. per 1/4 lb. and 8c. per pound for postage.

	oz.	1/4 LB.	LB.
Alice Eckford, creamy white, white wings.....	5	12	40
America, the brightest blood-red striped.....	5	12	40
Apple Blossom, bright rose and pink.....	5	10	30
Aurora, white, flaked with orange salmon.....	5	15	50
Blanche Burpee, very large white.....	5	12	40
Blanche Ferry, pink and white, early.....	10 lbs., \$2.50;	5	10 30
" " extra early, 10 days earlier, 10 lbs., \$2.50;	5	10	30
Blushing Beauty, fine pink, hooded form.....	5	12	40
Bride, new, the best of all whites.....	5	15	50
Butterfly, white, edged lavender.....	5	15	35
Brilliant, bright scarlet, does not burn.....	5	15	45
California, very soft, "Daybreak" pink.....	5	15	50
Captain of the Blues, purplish mauve.....	5	15	45
Celestial, clear lavender.....	5	15	50
Coquette, primrose yellow, shaded lavender.....	5	12	40
Countess, The new, clear lavender.....	5 lbs., \$1.75;	5	12 40
Countess of Radnor, delicate lavender.....	5 lbs., \$1.75;	5	12 40
Crown Princess of Prussia, flesh and salmon buff.....	5	15	40
Cupid, white, dwarf.....	10	20	60
" pink, new.....	10	25	85
Dorothy Tennant, deep rosy-mauve.....	5	12	40
Duke of Clarence, brilliant rose-scarlet.....	5	12	40
Duke of York, rose and primrose.....	5	12	40
Earliest of All, pink and white.....	10	25	85
Emily Eckford, reddish mauve, wings blue, good.....	5	15	40
Emily Henderson, white, early and free.....	5 lbs., \$1.40;	5	10 30
Emily Lynch, pink and white.....	5	15	50
Extra Early Blanche Ferry.....	10 lbs. \$2.50	5	10 30
Firefly, rich, brilliant scarlet.....	5	15	50
Golden Gate, pinkish mauve and lavender.....	5	15	50
Her Majesty, beautiful rose, large.....	5	15	40
Juanita, white, flaked with lavender.....	5	12	40
Katherine Tracy, brilliant pink.....	5	10	35
Lady Mary Curry, the brightest of all, orange.....	10	30	1 00
Lady Penzance, standard orange-pink, wings pink.....	5	12	40
Lottie Eckford, white, suffused lavender.....	5	10	30

	oz.	1/4 LB.	LB.
Lottie Hutchins, flaked with pink on cream ground.....	5	15	50
Lovely, soft shell pink, exquisite shade.....	5	15	50
Maid of Honor, white, edged violet (Improved Butterfly).....	5	15	45
Mars, large, bright scarlet.....	5	12	40
Modesty, new, the most delicate pink.....	10	25	80
Monarch, deep purplish maroon.....	5	15	40
Mrs. Eckford, delicate primrose yellow.....	5	15	40
Mrs. Jos. Chamberlain, white, striped and flaked rose.....	5	15	40
Mrs. Sankey, white, black-seeded.....	5 lbs., \$1.30;	6	10 30
Navy Blue, almost true blue.....	15	40	1 50
Ovid, rose-pink, margined deeper rose.....	5	15	40
Peachblossom, salmon, wings soft pink.....	5	15	40
Prima Donna, soft pink.....	10	20	50
Prince Edward of York, new, scarlet and rose.....	10	20	60
Princess May, light lavender.....	5	12	40
Queen Victoria, new, pale yellow.....	10	25	80
Ramona, white, splashed pale pink.....	5	12	40
Royal Robe, delicate pink.....	5	15	40
Royal Rose, bright pink and blush white.....	5	15	50
Sadie Burpee, new, white.....	15	40	1 50
Salopian, new, the best of all reds.....	5	15	50
Senator, chocolate, striped white.....	5	10	35
Sensation, pink and white.....	10	20	60
Shahzada, rich dark maroon.....	10	20	60
Stanley, rich dark maroon.....	5	12	40
Stella Morse, deep cream, shading to primrose, tinted rose.....	10	20	50
Triumph, extra large, bright orange pink, wings white.....	10	20	65
Venus, salmon-buff, shaded pink.....	5	12	40

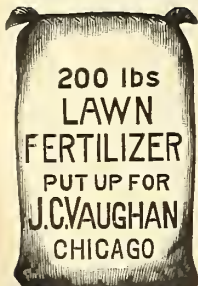
## SWEET PEAS IN MIXTURE.

Vaughan's Prize Mixture.....	10 lbs., \$4.25;	10	15 50
American Seedling Mixture.....	5 lbs., \$1.65;	15	40
Vaughan's Florists' Mixture, includes only sorts that are most suitable for forcing and best cut-flower varieties.....		15	40
Eckford Mixture, made from named sorts, per 10 lbs., \$2.50;		12	30
Good Mixture.....	" " 1.75;		20

### "Vaughan's Best" Mixture of Verbenas.

This mixture contains all that is choice and desirable in Verbenas. It includes the Mammoth-Flowered strains of three celebrated Verbena specialists, the beautiful and dazzling Defiance, the Snow-White, Purples, Striped and all the Auricula-Flowered varieties, with their large umbels of white-edged flowers, the new giant striped and the Fordhook Mammoth Verbenas. We feel perfectly safe in stating that this mixture of Verbenas will eclipse every other strain offered by any other house. Oz., \$2.00; 1/4 oz., 50c.; trade pkt., 25c.

	Trade pkt.	Oz.
Vinca Rosea, Rosea Alba, Alba Pura and mixed.....	each	15 60
VIOLA Cornuta, mixed.....	1/2 oz.,	30c.; 10
Odorata Semperflorens, blue.....	1/4 oz.,	25c.; 10 1 00
" The Czar, blue.....	1/2 oz.,	30c.; 10
Wahlenbergia Grandiflora, blue.....	1/4 oz.,	20c.; 10
Grandiflora Alba, white.....	1/4 oz.,	20c.; 10
WALLFLOWER, best double mixed.....	1/4 oz.,	50c.; 25
Parisian Forcing, blooms the first year from seed.....	5	15
Single mixed, best.....	5	15
ZINNIA Elegans fl. pl., double mixed.....	5	20
Elegans Pumila, double-scarlet, golden yellow or white.....	each,	10 30
Elegans Pumila, double dwarf mixed.....	10	25
Pomponne, finest double mixed.....	10	30
Grandiflora Plenissima (New Giant Mixed).....	10	45
Crested and Curled.....	10	50
Liliput, extra selected.....	10	40



## LAWN FERTILIZER.

This fertilizer is non-odoriferous, dry, fine and easy to apply. Two or three applications during a season, just before a rain or watering, at the rate of one pound to each 100 square feet of grass keeps it in a flourishing condition and enables it to withstand the scorching sun. This fertilizer can also be used on all garden truck, flower and house plants.

### QUANTITIES TO USE AND PRICES.

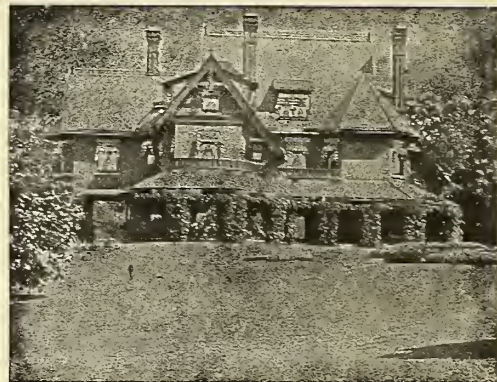
10 lb. bag for 1,000 sq. feet of lawn, or 500 sq. feet of garden.....	\$0 50
25 lb. bag for 2,500 sq. feet lawn, or 1,200 sq. feet of garden.....	1 00
50 lb. bag for 5,000 sq. feet of lawn, or 2,500 sq. feet of garden.....	1 60
100 lb. bag for 1/2 acre of lawn or 1/4 acre of garden.....	2 75
200 lbs. for 1/2 acre of lawn, or 1/4 acre of garden.....	5.00, 400 lbs..... 9 00

### UNLEACHED HARD WOOD ASHES.

This is also a splendid fertilizer for the lawn and garden, containing all of the fertilizing elements except nitrogen. If used on the lawn at the rate of a ton or more per acre as a first application, a subsequent annual dressing of three hundred pounds will insure a thrifty growth of dark color, exempt from ill effects of dry weather and free from weeds. It is also very beneficial to vegetable and field crops, and especially recommended to Cabbage and Onion Growers.

Price, 1000 lbs., \$8.00; 500 lbs., \$4.25; 100 lbs., \$1.00; 50 lbs., 65c.; 25 lbs., 35c.

## FLORISTS' SHOULD SELL VAUGHAN'S CHICAGO PARKS LAWN SEED.



Prepared for use in the Chicago Parks, named by us and sold at our Chicago Stores for many years with very general satisfaction. It will produce an even, dense growth of permanent sward as early in the season as it is possible to do. This Mixture contains no annual grasses for making quick show to the detriment of a good lawn, but only those of lasting value and hardness, which, when once established need no reseed-ing for years.

Price per pound, in 1 lb. packages, 15c.;

in 1/2 pound packages, 16c. per pound; 5 lb. bags, 70c.; 10 lb. bags, \$1.30; 15 lb. bags, \$1.75; 100 lbs., \$11.00.

Florists who have a retail store will find this a very profitable article to handle. We can furnish it put up in neat pasteboard boxes, also in neat white cloth bags of 5 pounds, 10 pounds and 15 pounds each, with directions for sowing.

### VAUGHAN'S CHICAGO PARKS LAWN SEED

WHOLESALE PRICE.	Per 100
Half pound packages (retail for 15c. each).....	\$ 8 00
One " " " " 25c. ".....	15 00
Five " " " " \$1.00 ".....	70c.
Per bushel, 15 lb. [retail for 2.75 ".....	\$ 1 75
Per 100 pounds.....	11 00

LAWN SEED.—Ordinary mixture, per bushel of 15 pounds..... 1 25

KENTUCKY BLUE GRASS, Fancy Cleaned. Per bushel 14 lbs..... 1 60 9 00

RED TOP, Fancy Seed. Extra heavy, 10 lbs..... 1 20 9 00

" " Ordinary. 10 lbs..... 70 6 00

WHITE DUTCH CLOVER. Very fine quality, 10 lbs..... 12 15 13 50

COLUMBIAN LAWN GRASS MIXTURE. 10 lbs 1 25 11 00

LAWN FERTILIZER. Retail. Wholesale,

5 lb. box..... \$0 30 \$0 20

10 lb. box..... 50 35

25 lb. bag..... 1 00 70

50 lb. bag..... 1 60 1 15

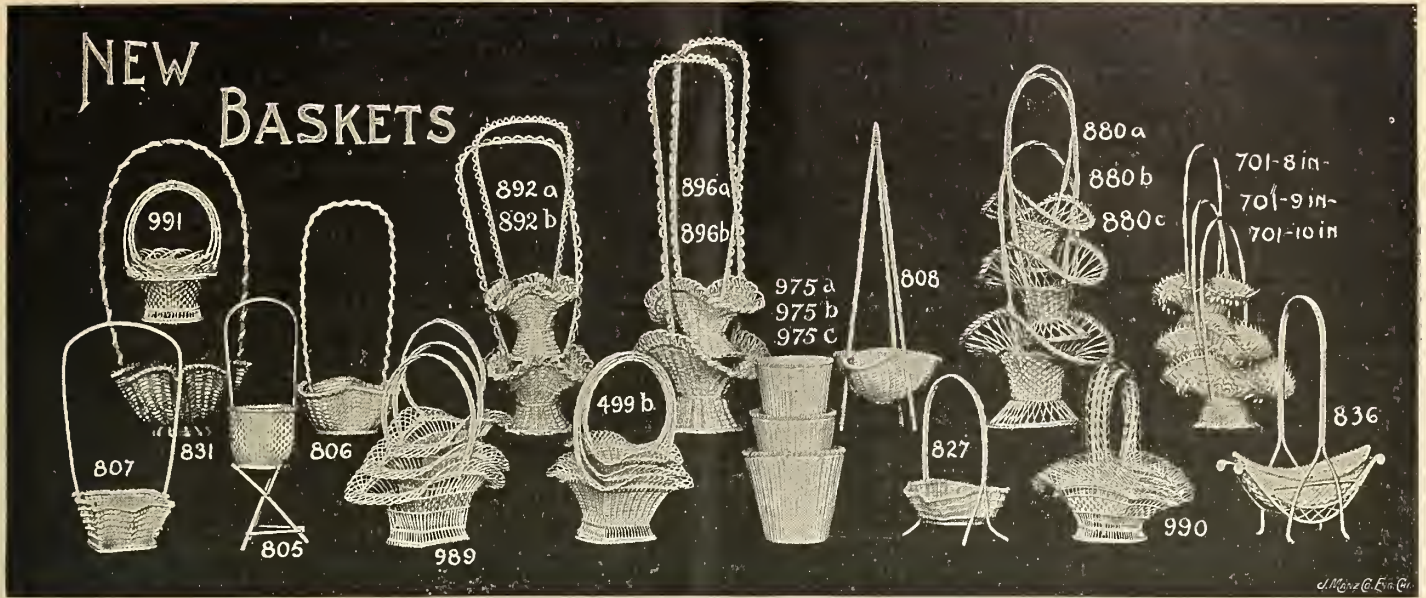
100 lb. bag..... 2 75 2 25

200 lbs..... 5 00 4 00

### VAUGHAN'S "GOLF LINKS" GRASS SEED.

This is a special mixture of the finest grasses, that will stand the wear and tear and retain its rich velvety appearance. Price, per lb., 20c.; 5 lbs., 65c.; 50 lbs., \$5.00; 100 lbs., \$15.00. Special price on larger lots.

# FLOWER BASKETS.



## NOTE REDUCTIONS AND LOW NET PRICES.

We make large importations of all best Florists' stock, and have always on hand a desirable list of **Newest Patterns** as well as all **Standard Styles**. It is impossible to show cuts of all these changing shapes, but customers leaving part of their orders to our own selection may depend on receiving handsome and salable novelties. Note reductions and also net prices.

### NEW STYLES.

No. 840.—Celluloid White, Blue or Pink, 8 inches.....	\$ 80
" 841.—White Braid, 8 inches.....	50
" 842.—Light Brown, 7 inches.....	60
" 843.—White, 5 inches, Pink, Blue or Green.....	60
" 845.—Roffea, 6 inches.....	60
" 846.—Wicker Braided, Pink, Pea Green or Blue, 9½ inches.....	60
" 847.—Roffea, 8 inches.....	55
" 848.—Wicker Braided, Pink, Pea Green, Blue or White, 8 inches.....	50
" 851.—Wicker Braided, Pink, Pea Green, Blue or White, 7 inches.....	50
" 852.—Pink, Blue and White, 9 inches.....	65
" 853a.—White Willow, 10 inches.....	40
" 853b.—" " 10 inches.....	50
" 854.—Round Roffea, 8 inches.....	95
" 855.—" " 9 inches.....	1 00

### OTHER STANDARD SORTS.

" 770a.—9 inches, dozen, \$2.35.....	22
" 770b.—10 inches, dozen, \$2.65.....	25
" 770c.—11 inches, dozen, \$3.65.....	35
" 880a.—9 inches.....	25
" 880b.—11 inches.....	35
" 880c.—13 inches.....	50
" 805.—High Stand, Pink, Blue or Green, 5 inches.....	45
" 806.—White Braid and Tinsel, 9¼ in.....	75
" 807.—Wicker Braided, Blue or Pink 7 inches.....	60
" 808.—Wicker Braided, with Tinsel, Pink or Green, 8 inches.....	75
" 827.—White Braid, oval, handle, 11 in.....	45
" 828.—" " " 9 in.....	55
" 829.—Square Roffea, " 7¼ in.....	60
" 830.—Wicker Braid, Pink or Pea Green, 7 inches.....	45
" 831.—Braid, White and Old Gold, high handle, 11 inches.....	75
" 892 A.—White Braid.....	60
" 892 B.—" " " ".....	75
" 896 A.—White Braid.....	60
" 896 B.—" " " ".....	75

No. 834.—Braid, White and Old Gold, high handle, 10 inches.....	\$ 70
" 836.—Boat Shaped, with handle, Pink or Pea Green, 10 inches.....	70
" 974.—Rush Hat on Easel, fills handsomely, 10 inch.....	15
" 975a, b and c; nest of 3.....	60

### WICKER NESTS.

We import these baskets in large quantities, and can make lowest prices for **fresh, white stock, full measure, best quality**. No baskets can excel them in beauty or salability. All good shapes, **specially imported by us**. The measures given are those of the smallest size of the nest.

No. 499a.—Fancy Square.....	\$ 1 00
" 499b.—" " nest of 3, pink, or blue, 7 inches.....	1 20
" 559 O.—Fine style, 8 in.....	55
" 559 A.—" " 9 in.....	65
" 559 B.—" " 10 in.....	90
" 844.—White Wicker, 8 inches.....	85
" 832 oval, fine, 10½ in.....	80
" 833 upright style, square, 9½ in.....	80
" 835 oblong, good style, 10¼ in.....	80
" 987 O.—Standard, 7½ in.....	35
" 987 A.—" " 8½ in.....	40
" 987 B.—" " 9¼ in.....	50
" 987 C.—" " 10¼ in.....	65
" 987 D.—" " 11 in.....	75
" 988 " " 10 in.....	75
" 989.—12 inches.....	70
" 990.—12 inches.....	85
" 991.—7 inches.....	55

### WILLOW PLATEAUX.

OVAL.			
16 inch.....	30	20 inch.....	45
18 ".....	38	22 ".....	55
ROUND.			
14 inch.....	30	20 inch.....	45
16 ".....	33	24 ".....	60
18 ".....	38		

### INDIAN CHIP BASKETS.

No. 701. HANDLE BASKET ON FOOT.			
8 inch.....	each, 35c.	9 inch.....	each, 40c.
10 inch.....	each, 50c.		

### SWISS MOSS BASKETS.

FRESH WHITE STOCKS; BEST QUALITY.

	GROSS.	DOZEN.
3 inch, plain.....	\$ 2 60	\$ 0 25
3½ " ".....	2 80	28
4 " ".....	3 30	32
5 " ".....	4 75	43
6 " ".....	6 00	55
7 " ".....	8 80	80
8 " ".....	11 00	1 00
9 " ".....	14 00	1 30
6 " Fancy edge.....		1 25
7 " " ".....		1 50
8 " " ".....		1 80

## WHEAT SHEAVES.

**10 PER CENT. DISCOUNT**  
From Prices Named Below.

**Larger Discount If Your Order Exceeds \$10.**

We are the largest makers of Sheaves in the West, and use only

**First Quality Italian Bleached Wheat**

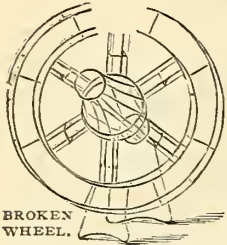
in the manufacture of same. Our styles are  
....UP TO DATE....

Solid, A A each.....	\$0 40	Flat, A each.....	\$0 15
" B ".....	55	" B ".....	25
" C ".....	70	" C ".....	35
" D ".....	85	" D ".....	45
" E ".....	95	" E ".....	55
Open, A ".....	60	" F ".....	70
" B ".....	75	" G ".....	90
" C ".....	90	" H ".....	1 00

**BLEACHED WHEAT by Weight.**

Finest.....per lb., 50c.; 10 lbs., \$4 50

# FLORISTS' WIRE DESIGNS.



BROKEN WHEEL.

## Our Wire Work..

is made by the best and most reliable workmen in the West and is not to be compared with the botched work of inexperienced men or the clumsy half-round frames sometimes offered.

Write for Special Prices on Large Orders.

Many other and odd designs can be made and supplied on short notice, but they are made entirely at the risk of the buyer as to correctness; we accept such orders on no other basis.

**DISCOUNTS** } **20 PER CENT.** on all orders. **25 PER CENT.** For cash 10 days } on \$10.00 and over.

Larger Discount if you buy big. Send us your list for estimate. We meet all honest competition on these goods, quality considered.

Discounts named above are only for orders shipped from Chicago house. When shipped from New York house, prices quoted are net.

These rates will be found lower than many so-called priced net rates.



KNIGHTS TEMPLAR.

Anchors.		Crescents.	
FLAT.		FLAT.	
Inch.	Price.	Inch.	Price.
8	\$.65	8	\$.05
10	.80	10	.07
12	1.00	12	.09
14	1.20	14	.11
16	1.40	16	.13
ON BASE.		ON BASE.	
8	1.10	8	1.15
10	1.20	10	1.20
12	1.30	12	1.25
14	1.40	14	1.30
16	1.50	16	1.35
ON BASE WITH STAR ABOVE.		ON BASE WITH STAR ABOVE.	
10	1.16	10	1.18
12	1.25	12	1.25
14	1.35	14	1.35
ON RECLINING STAND.		ON RECLINING STAND.	
8	1.09	8	1.11
10	1.12	10	1.15
12	1.13	12	1.17
14	1.15	14	1.18
16	1.18	16	1.20
ON BASE WITH SCROLL FOR LETTERING.		ON BASE WITH SCROLL FOR LETTERING.	
10	1.18	10	1.18
12	1.21	12	1.21
14	1.25	14	1.25
16	1.30	16	1.30
Banners.		Crescent and Star.	
5	55	10	24
6	58	12	26
7	60	14	28
8	62	16	30
Bases.		ON STAND WITH BAR FOR LETTERING.	
5	05	10	24
6	06	12	26
7	08	14	28
8	10	16	30
Handle Basket.		ON BASE WITH SCROLL FOR LETTERING.	
4	30	12	28
5	40	14	30
Hanging Basket.		ON BASE WITH SCROLL FOR LETTERING.	
WITH FANCY TOP.		ON BASE WITH SCROLL FOR LETTERING.	
6	doz., 1.75	12	28
8	doz., 2.00	14	30
WITH PLAIN TOP.		ON BASE WITH SCROLL FOR LETTERING.	
6	doz., 1.50	12	28
8	doz., 1.75	14	30
Bells.		Croses.	
DOUBLE FRAME.		Flat.	
8	25	8	02 1/2
10	35	10	03
12	45	12	04
14	55	14	05
16	65	16	06
SINGLE FRAME.		18	07
8	17	ON Base.	
10	20	8	08
12	25	10	10
14	30	12	12
16	35	14	14
18	40	16	16
DOUBLE FRAME FOR CHRISTMAS.		18	18
5	doz., 65	Croses Slanting.	
6	doz., 90	12	05
SINGLE FRAME FOR CHRISTMAS.		14	06
5	doz., 40	16	07
6	doz., 55	18	08
Bicycle.		ON Base.	
SIZE OF WHEEL.		12	12
20	1.50	14	15
25	2.25	16	18
Bow and Arrow.		18	20
18	25	Cross and Crown.	
24	30	12	30
Bibles or Books.		15	40
8 x 12	20	18	50
10 x 16	25	Maltese Crosses.	
Bouquet Frames.		6	05
FLAT.		8	07
5	04	10	09
6	05	12	11
8	07	14	13
Broken Column.		16	15
12	15	18	18
15	18	20	21
18	23	22	25
21	30	ON Base.	
BROKEN COLUMN WITH WREATH ENTWINED.		6	10
24	50	8	12
27	75	10	15
Broken Wheel.		12	20
15	30	14	25
18	40	16	30
21	50	18	35
Canopies.		Casket Cross.	
ROUND.		12	12
30	75	15	15
36	1.00	18	18
SQUARE.		Crowns.	
30	75	Flat.	
36	1.00	8	15
Crown.		10	20
7	30	12	25
9	40	14	30
11	50	ON Base.	
13	60	8	12
15	70	10	15
17	80	12	20
19	90	14	25
21	1.00	16	30
23	1.10	18	35
25	1.20	20	40
27	1.30	22	45
29	1.40	24	50
31	1.50	26	55
33	1.60	28	60
35	1.70	30	65
37	1.80	32	70
39	1.90	34	75
41	2.00	36	80
43	2.10	38	85
45	2.20	40	90
47	2.30	42	95
49	2.40	44	1.00
51	2.50	46	1.05
53	2.60	48	1.10
55	2.70	50	1.15
57	2.80	52	1.20
59	2.90	54	1.25
61	3.00	56	1.30
63	3.10	58	1.35
65	3.20	60	1.40
67	3.30	62	1.45
69	3.40	64	1.50
71	3.50	66	1.55
73	3.60	68	1.60
75	3.70	70	1.65
77	3.80	72	1.70
79	3.90	74	1.75
81	4.00	76	1.80
83	4.10	78	1.85
85	4.20	80	1.90
87	4.30	82	1.95
89	4.40	84	2.00
91	4.50	86	2.05
93	4.60	88	2.10
95	4.70	90	2.15
97	4.80	92	2.20
99	4.90	94	2.25
101	5.00	96	2.30
103	5.10	98	2.35
105	5.20	100	2.40
107	5.30	102	2.45
109	5.40	104	2.50
111	5.50	106	2.55
113	5.60	108	2.60
115	5.70	110	2.65
117	5.80	112	2.70
119	5.90	114	2.75
121	6.00	116	2.80
123	6.10	118	2.85
125	6.20	120	2.90
127	6.30	122	2.95
129	6.40	124	3.00
131	6.50	126	3.05
133	6.60	128	3.10
135	6.70	130	3.15
137	6.80	132	3.20
139	6.90	134	3.25
141	7.00	136	3.30
143	7.10	138	3.35
145	7.20	140	3.40
147	7.30	142	3.45
149	7.40	144	3.50
151	7.50	146	3.55
153	7.60	148	3.60
155	7.70	150	3.65
157	7.80	152	3.70
159	7.90	154	3.75
161	8.00	156	3.80
163	8.10	158	3.85
165	8.20	160	3.90
167	8.30	162	3.95
169	8.40	164	4.00
171	8.50	166	4.05
173	8.60	168	4.10
175	8.70	170	4.15
177	8.80	172	4.20
179	8.90	174	4.25
181	9.00	176	4.30
183	9.10	178	4.35
185	9.20	180	4.40
187	9.30	182	4.45
189	9.40	184	4.50
191	9.50	186	4.55
193	9.60	188	4.60
195	9.70	190	4.65
197	9.80	192	4.70
199	9.90	194	4.75
201	10.00	196	4.80
203	10.10	198	4.85
205	10.20	200	4.90
207	10.30	202	4.95
209	10.40	204	5.00
211	10.50	206	5.05
213	10.60	208	5.10
215	10.70	210	5.15
217	10.80	212	5.20
219	10.90	214	5.25
221	11.00	216	5.30
223	11.10	218	5.35
225	11.20	220	5.40
227	11.30	222	5.45
229	11.40	224	5.50
231	11.50	226	5.55
233	11.60	228	5.60
235	11.70	230	5.65
237	11.80	232	5.70
239	11.90	234	5.75
241	12.00	236	5.80
243	12.10	238	5.85
245	12.20	240	5.90
247	12.30	242	5.95
249	12.40	244	6.00
251	12.50	246	6.05
253	12.60	248	6.10
255	12.70	250	6.15
257	12.80	252	6.20
259	12.90	254	6.25
261	13.00	256	6.30
263	13.10	258	6.35
265	13.20	260	6.40
267	13.30	262	6.45
269	13.40	264	6.50
271	13.50	266	6.55
273	13.60	268	6.60
275	13.70	270	6.65
277	13.80	272	6.70
279	13.90	274	6.75
281	14.00	276	6.80
283	14.10	278	6.85
285	14.20	280	6.90
287	14.30	282	6.95
289	14.40	284	7.00
291	14.50	286	7.05
293	14.60	288	7.10
295	14.70	290	7.15
297	14.80	292	7.20
299	14.90	294	7.25
301	15.00	296	7.30
303	15.10	298	7.35
305	15.20	300	7.40
307	15.30	302	7.45
309	15.40	304	7.50
311	15.50	306	7.55
313	15.60	308	7.60
315	15.70	310	7.65
317	15.80	312	7.70
319	15.90	314	7.75
321	16.00	316	7.80
323	16.10	318	7.85
325	16.20	320	7.90
327	16.30	322	7.95
329	16.40	324	8.00
331	16.50	326	8.05
333	16.60	328	8.10
335	16.70	330	8.15
337	16.80	332	8.20
339	16.90	334	8.25
341	17.00	336	8.30
343	17.10	338	8.35
345	17.20	340	8.40
347	17.30	342	8.45
349	17.40	344	8.50
351	17.50	346	8.55
353	17.60	348	8.60
355	17.70	350	8.65
357	17.80	352	8.70
359	17.90	354	8.75
361	18.00	356	8.80
363	18.10	358	8.85
365	18.20	360	8.90
367	18.30	362	8.95
369	18.40	364	9.00
371	18.50	366	9.05
373	18.60	368	9.10
375	18.70	370	9.15
377	18.80	372	9.20
379	18.90	374	9.25
381	19.00	376	9.30
383	19.10	378	9.35
385	19.20	380	9.40
387	19.30	382	9.45
389	19.40	384	9.50
391	19.50	386	9.55
393	19.60	388	9.60
395	19.70	390	9.65
397	19.80	392	9.70
399	19.90	394	9.75
401	20.00	396	9.80
403	20.10	398	9.85
405	20.20	400	9.90
407	20.30	402	9.95
409	20.40	404	10.00
411	20.50	406	10.05
413	20.60	408	10.10
415	20.70	410	10.15
417	20.80	412	10.20
419	20.90	414	10.25
421	21.00	416	10.30
423	21.10	418	10.35
425	21.20	420	10.40
4			





# REVISED . . . . . A. B. C. LIST OF Supplies.



**Bellows, American.**—Used for dusting plants with sulphur or like material. Two sizes, each, 75c and \$1.00.

**Woodason Vaporizing Bellows.**—Throws a spray fine as mist rendering the use of strong solutions perfectly safe on tender plants. Large size, \$2.00; medium size, \$1.40.

**Woodason Powder Bellows.**

Single cone, large, each, \$1.75. Double cone, each, \$2.75.  
" " small, " \$1.25.

## BOOKS.

- ALBUM für Teppichgärtenei und Gruppen Bepflanzung.** With 287 plans for carpet beds, flower and foliage plant groups, 336 illustrations and 947 different ways of planting beds, an elegant, durable cover. Text, German; names, Latin. . . . . \$3 25
- American Florist, The.** The best paper for the trade; invaluable to every Florist, issued weekly. One year's subscription. . . . . 1 00
- American Florists' Directory.** Every florist should have this. . . . . 2 00
- Art of Propagation,** treats on trees and plants. . . . . 30
- Asparagus Culture,** (Barnes & Robinson's) . . . . . 50
- Begonia, The Tuberosus,** paper. . . . . 20
- Bulbs and Bulbous Plants,** 16 pages. . . . . 20
- Carnation Culture,** by L. L. Lamborn. . . . . 1 50
- Celery Manual, Vaughan's,** 59 pages. . . . . 50
- Chrysanthemum Culture,** by James Morton; cloth, \$1.00; paper. . . . . 60
- Fertilizers, J. J. Gregory,** paper. . . . . 40  
" by Prof. Voorhees. . . . . 1 00
- Gardening for Profit, Henderson's** cloth. . . . . 1 75
- Greenhouse Construction,** by L. R. Taft. All the best and most improved structures are fully and clearly described, and over 100 illustrations are given, cloth. . . . . 1 50
- Hand Book of Plants,** Henderson's. Latest edition. . . . . 3 35
- Horticulturist's Rule Book,** this book contains more valuable information to the square inch than many entire books; by L. H. Bailey, cloth. . . . . 85
- How to Destroy Insects on Plants, etc.** . . . . . 25
- How to Grow Cut-Flowers.** A thoroughly practical work by the late M. A. Hunt, on this attractive subject. 225 pages, cloth; invaluable to any who are beginning this business, covering every department from the erection of the greenhouse to the packing of the product. . . . . 1 75
- Manures' Talks On,** by Joseph Harris, revised edition, cloth. . . . . 1 60
- Method of Making Manures,** Bommer. . . . . 25
- Mushroom Culture,** Robinsons, illustrated, cloth. . . . . 50
- Mushrooms,** How to grow Them, by Wm. Falconer, cloth. . . . . 1 40
- Practical Floriculture,** by Henderson. . . . . 1 50
- The Rose,** by H. B. Ellwanger. . . . . 1 15
- Success in Market Gardening,** Rawson's. . . . . 1 00
- Wallace's Notes on Lilies,** illustrated, cloth, 215 pages. . . . . 2 00

For other Books see Retail Catalogue.

## BOUQUET PAPERS. Fancy Italians.

MEASURE DOES NOT INCLUDE LACE		Many fine new patterns; 12 scallops	
	DOZ. GROSS.		DOZ. GROSS
3 inch	25c \$2.25	5 inch	40c \$3.85
3½ "	27c 2.65	5½ "	45c 4.75
4 "	30c 3.00	7 "	70c 7.50
4½ "	35c 3.30		



## VAUGHAN'S CONCENTRATED FLOWER FOOD.

Handsome packages, with lithographed labels and directions for using: is one of the best selling articles a florist can have in his store. Per doz. ½ lb. packages, \$1.15; each, 12c. (retail 15c); doz. 1 lb., packages, \$2.00; each, 20c. (retail 25c.)

## CANE STAKES.

We are headquarters for these. Prices, in Chicago, per 100, 75c; 250 for \$1.25; per 1000, \$4.00; 3,000 for \$11.50. Prices in New York, 100, \$1.00; 250 for \$1.75; per 1,000, \$5.50. Write for prices on larger lots,

**COCOANUT FIBRE,** for Ferns, etc., ½ bbl., \$2.25; bale, \$4.00.

**COCOANUT FIBRE,** for the manufacture of Artificial Palms. 10 lbs., \$2.50; 50 lbs., \$10.00; 100 lbs., \$17.50; full bale (\$250 lbs.), \$30.00.

**COTTON WADDING,** for packing flowers, etc.  
WHITE. . . . . per doz. sheets, 25c; per bale, \$9.25  
COLORED (black) . . . . . 20c; " " 7.35



**EARTHEN WARE VASES.**—A. Vaughau's Cylinder, decorated, each, 40c; doz., \$3.75. B. Plain Earthen Ware, each, 25c, doz., \$2.75. C. Plain Earthen Ware, each, 20c, doz., \$2.25.

## THE CLARA CEMETERY VASE.



It is one of the most useful, as well as handsome articles ever placed on the market. Of beautiful solid mounted glass, 12 inches high. It takes the place of all the old tin cans, bottles, and like unsightly receptacles often used in the cemetery where only the attractive and ornamental should be seen. The lower end is sharp-pointed so it can be embedded about six inches in the ground and stand firm. It will hold sufficient water to keep the flowers fresh and sweet, and will accommodate flowers with long as well as short stems. The vase is bell shaped and the top has a diameter of about five inches.

The CLARA VASE, boxed, per doz., \$3.50.

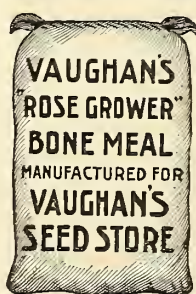
The CLARA VASE, in barrel lots, per bbl., (3 doz.) packing included, \$10.00.

**DIBBER.**—For transplanting vegetable plants; steel point very desirable. Each, 30c; postpaid, 40c.

## FERTILIZERS.

Trees, vines, plants and grass require food; cannot live on air and water alone. New soil may contain sufficient food for the growth of several crops, but a shortage of one or more food elements soon appears unless what is taken off in crops is replaced by manure and Fertilizer, there is not only a decreased yield, but the plant becomes unhealthy and stunted in growth. Fruit trees and vines to thrive require plenty of well balanced food. If the food is not in the soil of the orchard or field it will have to be put in. The necessary elements of plant food which are likely to be exhausted are Nitrogen, Phosphoric Acid and Potash. Barnyard manure and Commercial Fertilizers both contain these elements. Commercial Fertilizers contain them in more concentrated, available, better balanced form. Barnyard manure is out of balance—does not contain enough of the mineral elements. There are great differences in Fertilizers as there are in every kind of merchandise.

**Vaughan's "ROSE GROWER" Bone Meal.**—This is a special brand we have put up for the trade. It is ground fine hence acts quickly. Free from acid, very white in appearance, and a superb article. It is made from bone accumulated in large slaughter houses, and should not be compared with the Bone Meal made from cattle heads and feet gathered on the western prairies. Our "Rose Grower" bone has been slightly steamed to soften it so it can be ground fine, and is thus quicker in its action. The finer bone is ground the quicker the mild acid thrown out can be dissolved by the tiny roots of the plants and made use of as food. A finely ground bone can also be more evenly distributed through the soil. ANALYSIS.—Ammonia, 4½ to 5½ per cent. Total phosphoric acid, 22 to 25 per cent. Total bone phosphate, 48 to 54 per cent.



Price, 5 lbs., 25c; 10 lbs., 40c; 25 lbs., 60c; 50 lbs., \$1.00; 100 lbs., \$2.00; 200 lbs., \$3.50; 500 lbs., \$8.00; 1000 lbs., \$15.00; 2000 lbs., \$30.00.

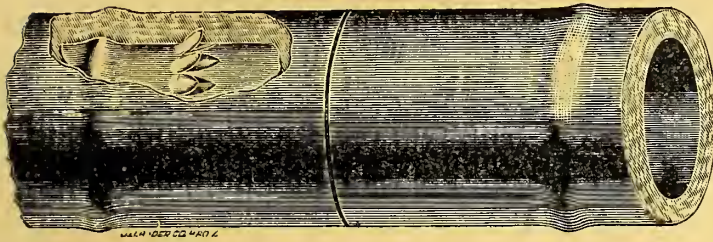




# Good Things for the Florist.



"VAUGHAN'S FLORISTS" (German Propagating) Knife. Each, 75c.; 3 for \$2.10; 6 for \$4.00; if by mail, postage included.



"COOPER" MENDER—Cut showing  $\frac{3}{4}$  inch hose when mended.



\$1.20;  $7\frac{1}{2}$  in., price, each, \$1.35.

**GERMAN PRUNING SHEARS.**  
— $4\frac{1}{2}$  inch, price, each, 75c.;  $5\frac{1}{2}$  inch, price, each, 85c.;  $6\frac{1}{2}$  inch, price, each, 90c.;  $7\frac{1}{2}$  inch, price, each, \$1.10;  $8\frac{1}{2}$  in., price, each,

## RATTAN—SINGAPORE FIBRE HOT-BED MATS.

This Hot-Bed Mat is mouse and rot proof and almost indestructible. It is made of an air-holding, flexible cane-fibre, firmly put together and weighs about 30 pounds. It is without a doubt the best and most durable and hence economical mat and only little more expensive than a straw mat, the defects of which are only too well known. Size 6 feet 2 inches long by 6 feet wide.

Price, each, \$2.00; 5 for \$9.50.

## ELECTRIC NON-KINKABLE RUBBER HOSE.

This hose has come into general use on account of its superior quality. Florists who have been buying cheap rubber hose have found out that it is dear at any price and the "Electric" will pay better in the long run than most rubber hose in the market. It can be supplied in any lengths.

Price,  $\frac{3}{4}$  inch, per 100 feet, \$16.00.

## NICOMITE.

The fumigating insect powder for killing all kinds of insects on plants in greenhouses and frames. The most easy, safe and effective method of fumigating greenhouses and frames ever invented. 16 oz. tins, \$1.25. Fumigators for same, each, 50c.

## NIKOTEEN APHIS PUNK.

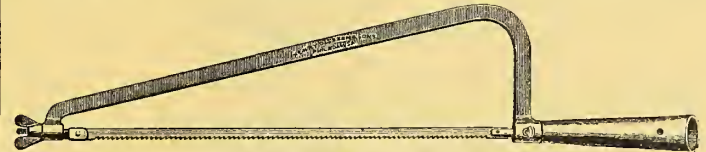
For destroying insect life on plants and flowers, Aphis Punk is said to be absolutely free from Ammonia which causes injury to delicate plants when heavy tobacco is used, it is especially recommended for Roses, Carnations, Chrysanthemums, Heliotrope, Smilax and Ferns. Per package of 12 rolls, 60c. Directions with each order.

## LONG'S FLORAL PHOTOGRAPHS.

Sixty-eight designs illustrated by highly finished half-tones from original photographs, put up in neat book form. Every florist should have one. Each, \$2.50.

## THE COOPER HOSE MENDER.

It is simple, practical and effective. It does not reduce the diameter of the hose. It will not rust or wear out. It can be used as many times as desired. You need no wires, pliers or mechanical skill to adjust them. They make your hose as good as new. Last of all, when once used you will never be without them. Price, each, 10c.; doz., \$1.00.



VAUGHAN'S PERFECTION PRUNING SAW.

## Vaughan's "Perfection" Pruning Saw,

Made of best steel, with adjustable blade so any branch can be easily removed and close to the trunk of the tree. Can be used as a hand-saw or fastened to any pole. The best saw on the market. Price, each, \$1.75; 3 for \$5.00.

**SAWS. Double Edged Pruning.**—Holes are provided in the handle for attaching to a pole; 16-inch, 75c.; 18-inch, 85c.; 20-inch, \$1.00.

## POT COVERS.

We offer a fine line of these and at reduced prices. Florists' will find them a great help to sale of flowering and ornamental plants to retail trade.

Strawbraid and Wicker with Rattan Rims.

SIZE.	DIAM.	EACH.	DOZ.	SIZE.	DIAM.	EACH.	DOZ.
722-2	5 $\frac{1}{2}$ in.	\$0 30	\$3 25	722-6	8 $\frac{3}{4}$ in.	\$0 50	\$5 75
722-3	6 in.	35	3 75	722-7	10 in.	60	6 50
722-4	6 $\frac{3}{4}$ in.	40	4 50	722-8	10 $\frac{3}{4}$ in.	70	7 25
722-5	7 $\frac{1}{2}$ in.	45	5 25				

## PLAIN GILT TRIMMED.

722-5	8 in.	50	5 60	722-8	10 $\frac{3}{4}$ in.	80	9 00
722-6	8 $\frac{3}{4}$ in.	60	6 40	722-9	11 $\frac{1}{2}$ in.	1 00	
722-7	10 in.	70	7 50				

## FLORISTS' FIBRE VASES. ENAMELED WHITE.

### DARK PINK INSIDE.

A neat and handsome vase for retail store trade. (Special discount quoted for quantities.)

NUMBER	IN CASES.	PER DOZ.
No. 00, diameter, 11 inches, 21 $\frac{1}{2}$ inches deep	1-12	\$9 00
No. 0, diameter, 8 $\frac{1}{2}$ inches, 12 inches deep	$\frac{1}{2}$	6 45
No. 1, diameter, 5 $\frac{1}{2}$ inches, 10 inches deep	$\frac{1}{2}$	4 50
No. 2, diameter, 4 $\frac{1}{2}$ inches, 9 inches deep	$\frac{1}{2}$	3 45
No. 3, diameter, 4 inches, 6 inches deep	$\frac{1}{2}$	2 70
No. 4, diameter, 4 inches, 4 $\frac{1}{2}$ inches deep	$\frac{1}{2}$	2 25
No. 22, diameter, 4 $\frac{1}{2}$ inches, 15 inches deep	$\frac{1}{2}$	4 95
No. 33, diameter, 4 inches, 12 inches deep	$\frac{1}{2}$	4 05
No. 44, diameter, 3 inches, 9 inches deep	$\frac{1}{2}$	3 50

# HIGH GRADE FORCING BULBS.

Before closing contracts for your needs in the line of Liliun Harrisii, Longiflorum, Roman Hyacinths, Narcissus, Paper White, Azaleas and all Forcing Bulb stock for the season of 1900, do not fail to get our prices. We shall take pleasure in quoting and will name rates that will be of interest to you.

IMPORTED BULB LIST READY MARCH 15. ASK FOR A COPY.

J. C. VAUGHAN.  
C. CROPP.

# Vaughan's Seed Store

NEW YORK, 14 Barclay Street.

CHICAGO, 84 & 86 Randolph Street.

GREENHOUSES, WESTERN SPRINGS, ILLINOIS.

From \_\_\_\_\_

P. O. \_\_\_\_\_ State \_\_\_\_\_

*Vaughan's Seed Store,*

*P. O. Box 688*

*Chicago.*

84 & 86 Randolph Street.









**TIN FOIL.**

Write for latest market rates on quantities.

**TIN FOIL.**—Terms Cash. Cartage free.

- Florist's Foil**, 2 lbs., 25c.; 10 lbs., \$1.00; 50 lbs., \$4.50; 100 lbs., \$8.75.
- Silk Finish Foil**, ..... Per lb., 25c.; 10 lbs., 2 25
- Violet** ..... Per lb., 55c.; 5 lbs., \$2.55; 10 lbs., 5 00
- TOOTH PICKS.**—Cutter, Tower & Co.'s. They are pointed both ways, and Florists who have used them will have no other. We keep only first quality. 1 box, 10c.; 3 boxes, 25c.; 7 boxes, 50c.; 17 boxes, \$1.00; 35 boxes, \$2.00; 1 case (100 boxes)..... 5 00

**TREE PRUNERS.**

**Water's.**—See cut. Length of pole, 4 feet, 50c.; 6 feet, 75c.; 8 feet, 90c.; 10 feet, \$1.00; 12 feet, \$1.10. Extra knives, each, 20c.

**Lee's New Pole Tree Pruner.**—Can be placed on a pole of any size. Price, each (with-out pole), \$1.00.

**TROWELS.**

**Vaughan's Steel.**—Absolutely the best Trowel in the World.

It is of one solid piece of steel, and will out-wear several of the ordinary sort. Each, 50c.; 3 for \$1.40. Postpaid, each, 60c.



**Cleves' Angular.**—Small, 15c.; medium, 20c.; large, 25c.

**Ordinary Garden Trowel.**—6-inch, each, 12c.; prepaid, 20c.; half doz., not prepaid, 60c.; 7-inch, each, 15c.; prepaid, 23c.; half doz., not prepaid, 80c.; 8-inch, each, 20c.; prepaid, 28c.; half doz., not prepaid, \$1.00.

**Imported English Steel.**—Light, and very durable, 6-inch, 25c.; 7-inch, 30c. By mail, add 10c.



**TURF EDGER.**

**American.**—Each, 50 cents.

**TWEEZERS.**—4-in., 10c.; 4½-in., 13c.; 5-in., 18c.; 6-in., 25c.; 7-in., large 35

**TWINE, Bouquet**, bleached..... per lb., 95

**FLORISTS' THREAD**, similar to Silkaline. Sample on applica-tion. 2 oz. spools, 15c.; doz., \$1.50.

**Hemp**, No. 18 for parcels..... per lb., 25

**Linen**, blue and white, best for training Smilax (4 balls to pound)..... 3 lb. package, \$1.25; " 45

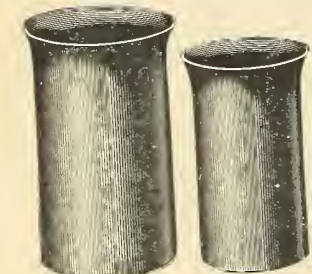
" green, for packages, very strong..... " 55

**Jute**, for bunching, 2 or 3 ply, per lb., 10c.; 10 lbs., 85c.; per 100 " 8 00

**FLORISTS' VASES.**

**BELL TOP.**

Furnished in deep, rich brown glaze; absolutely waterproof. Largely used by Florists and others for displaying cut-flowers. Can be used for many purposes. More desirable than glass or earthen, because they are light, strong and will not break if dropped. Pay for themselves in a short time.



No.	depth	Top	Bottom	Per doz.
No. 1.	11 inches.	7¼ inches.	6 inches.	\$3 25
No. 2.	9½ "	6 "	4¾ "	2 85
No. 3.	6¾ "	5½ "	4¼ "	2 40
No. 4.	5¾ "	4½ "	3½ "	1 80

**Vases, Iron**, for graves..... Small, 25c.; medium, 30c.; large, 35

**Wax.**—Grafting, per lb., 20c.



Excelsior Weeder.



Hazel Nut.

**NOTICE.**

Prices quoted in this Catalogue subject to change without notice, owing to the unsteady condition of the market—this applies particularly to Fertilizers, Wire, Tinfoil, etc.

- Excelsior Hand** .....each, 10c. doz. 75
- Lang's, very useful**..... " 20c. " 2 00
- Hazeltine Hand**..... " 20c. " 2 00
- Wedding Fork, English**..... " 40c.

**WATERING POTS.**

**American**, heavy galvanized round cans with two copper-faced roses, long spouts. 4 quart, \$1.75; 6 quart, \$2.00; 8 quart, \$2.25; 10 quart, \$2.50; 12 quart, \$2.75.

**French Style**, oval, otherwise same make as above, 8 quart, \$2.40; 10 quart, \$2.85; 12 quart, \$3.00.



**WIRE.**

**WIRE.**—Annealed. Prices subject to change.

Nos.	20	22	24	26	27	28	36
Per lb., at.....	10	10	10	12	15	15	25
" 12 lbs., stone	80	85	90	1.00	1.05	\$1.15	\$1.95

**Copper**, fine, lb., 65c.; medium, lb., 55c.

**CUT FLORISTS' WIRE IN WOODEN BOXES.**

This wire is prepared especially for florists. Is clean, extra soft, white wire, straightened and cut in lengths ready for immediate use, and in a convenient form.



12 lbs. in each box.	Cut to	9 inches, No. 24.....	per box	1 75
	" 12 "	No. 24.....	" "	1 75
	" 12 "	No. 26.....	" "	2 00

**AMERICAN BEAUTY VASES**



**AMERICAN BEAUTY VASES.**

Every retail florist should have a set of these "American Beauty" Vases. When placed in a window, containing a bunch of long stem Roses or Carnations they improve a display one hundred per cent.

Size No.	HEIGHT.	EACH	Size No.	HEIGHT.	EACH.
1.....	19 inch.	\$1 75	4.....	36 inch.	\$3 50
" 2.....	25 "	2 25	" 5.....	40 "	4 50
" 3.....	30 "	2 45			

**Adjustable Plant Stand.**

This is one of the most useful contrivances a Florist can have, not only for decorating but for permanent conservatory and greenhouse use. The moderate price and durability of this stand is causing them to make their way into all sorts of establishments.

The special merits of this stand may be briefly enumerated as follows: The three feet cause it to stand firmly on a carpet or uneven floor. The upright is of three parts telescoped, being easily adjusted to various heights, fastened by means of thumb screws which are well made. The top flange will hold any ordinary pot upright or by using the four pronged crutch attachment, a pot can be placed on its side at two different angles, a very useful contrivance for temporary decorations.

Where large plants weighing two or three hundred pounds are to be elevated, three stands placed close together carry them safely, although the floor itself may be uneven. Four of them are useful for holding a temporary table or platform. While possessing a number of advantages over any other stand in the market the price is lower.

1 stand, \$1.50; 3 stands, \$4.00; 6 stands, \$7.50; 12 stands, \$14.00.



ADJUSTABLE PLANT STAND.