

国立清华大学气象季刊=QUARTERLY METEOROLOGICAL  
BULLETIN / 国立清华大学气象台 · 一 V. 1; no. 1  
(1932, 3) ~ [?] · 一北平:[编者], 1932~[?].  
:插图;附表;34cm.  
有部分英文内容.

\* \* \* \* \*

本刊共摄制1卷, 16毫米, 缩率1:24. 原件藏北京图书馆, 北京图书馆摄制. 母片藏全国图书馆文献缩微复制中心(北京).

本刊片卷摄制目录:

V. 1, no. 1 ~ V. 5, no. 4      (1932, 3 ~ 1936, 12)

國立清華大學氣象季刊  
QUARTERLY METEOROLOGICAL  
BULLETIN

TSING HUA UNIVERSITY METEOROLOGICAL  
OBSERVATORY

民國二十一年一月至三月  
January—March, 1932.

第一卷第一期

Vol. I. No. 1.

國立清華大學氣象台  
北平清華園  
NATIONAL TSING HUA UNIVERSITY  
TSING HUA YUAN, PEIPING, CHINA.

定價一元  
Price \$1.00



# 目 次

## 弁 言

1. 本台成立略史
2. 本台設備述略
3. 觀測紀錄凡例

## 觀 測 紀 錄

1. 逐日各小時氣壓
2. 逐日各小時氣溫
3. 逐日各小時絕對濕度
4. 逐日各小時相對濕度
5. 逐日各小時風向
6. 逐日各小時風速
7. 逐日各小時雨量
8. 逐日雲狀雲向雲速雲量及能見度
9. 逐日日照時數圖
10. 逐日氣象要素平均表
11. 各項氣象要素逐日變遷圖
12. 風向風速圖
13. 各月份氣象綱要
14. 各月份各小時氣象要素平均表

## TABLE OF CONTENTS

### Introduction

1. A brief history of the Tsing Hua University Observatory.
2. Equipments of the Tsing Hua University Observatory
3. Explanatory remarks

### Results of Meteorological Observations

1. Atmospheric pressure at every Hour of Day.
2. Air temperature at every Hour of Day
3. Absolute humidity at every Hour of Day
4. Relative humidity at every Hour of Day.
5. Wind directions at every Hour of Day.
5. Wind velocity at every Hour of Day
7. Rainfall at every Hour of Day.
3. Form, Direction, Velocity, Amount of Clouds and Visibility in every Day.
3. Hours of Bright Sunshine in every Day.
- 1) Daily values of Meteorological Elements in every Month
1. March of Different Meteorological Elements in every Month
2. Wind Rose
3. Monthly Summary of Different Meteorological Elements
1. Mean Hourly Values of Meteorological Elements in every Month.

# 緒言

(一)

## 本台成立略史

民國十八年秋清華大學成立地理學系(現改為地學系)關於地球之氣界部份設有氣象學程以闡明空氣界之變化情況而了解人地之關係同時並因華北尚少一設備完全具有新式儀器之氣象觀測場所特籌設一氣象台為校中師生實地考察氣象並以北平氣象實況供給外界參考之用是年冬即分向英德法美等國內各大儀器公司訂購大宗氣象儀器

氣象台之建築則因一再修改圖樣延至十九年七月一日始克興工歷十閱月而成訂購之儀器亦在此期間先後運送到校由廈千分別裝置完畢二十年五月以後本可從事觀測因無專任觀測人員暫緩正式舉行二十年冬先後增設專任觀測員二人及電報員一人遂即整理儀器試測月餘而以二十一年一月一日為本台正式觀測之發軔焉

(二)

## 本台設備述略

本台之建設以完成為一八七三年國際氣象學會議舉行於維也納城所決定氣象機關組織中最高級之標準氣象台或頭等測候所為目標

現時設備建築部份共約三萬五千元計有八角形鋼骨水泥高台一座台建於土山頂山頂高出平地凡三



本台全景

A General View of the Observatory.

十英尺台之內部對徑凡二十四英尺高共五層各十五英尺最下一層建築於土山內台頂高出地面實僅九十英尺若併台上之氣窗頂計之則達一百英尺測風儀器頂部又高出台頂二十四英尺共高出地面一百十四英尺矣台之西南部距台約三百英尺處有平地一方長一百二十英尺寬九十英尺則安置於平地部份之氣象儀器在焉

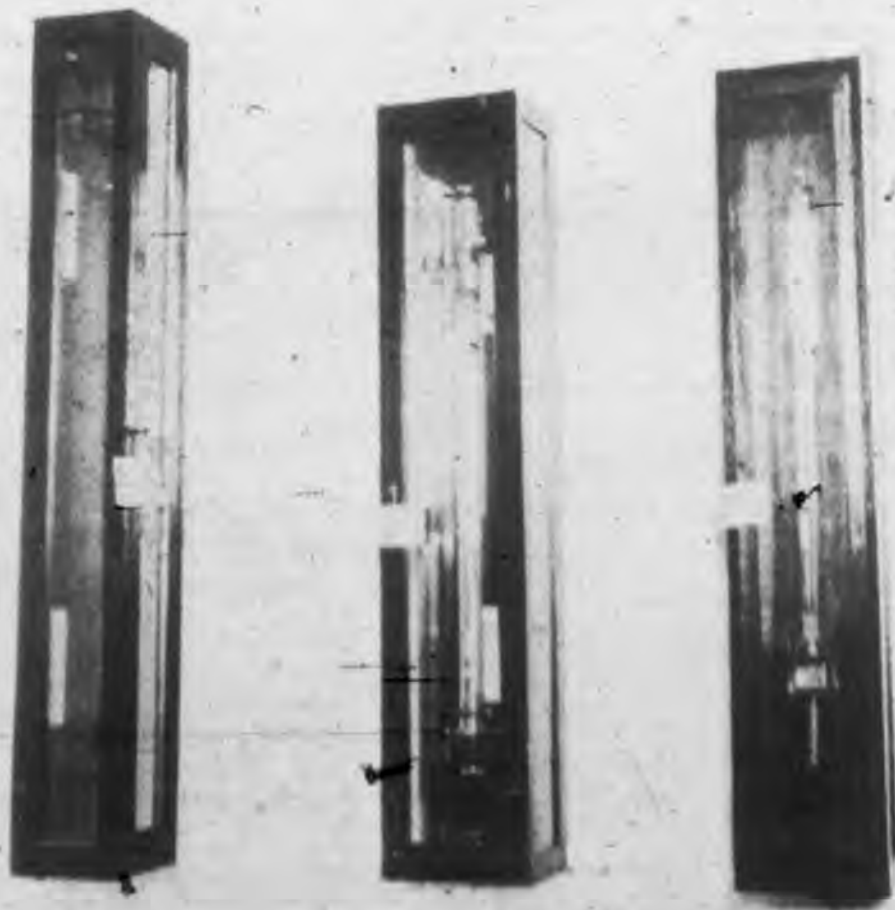


氣象園全景  
Meteorological Park.

儀器部份之設置費截至現在止共約二萬三四千元以後尚擬分年陸續購置由平地進及高空觀測蓋設備完全則研究益便也所有現用各儀器之構造及功用因在各重要氣象書籍中已有敘述茲不贅僅列舉其名以明本台觀測紀錄之來源而使推斷其準確之程度

### 關於氣壓者

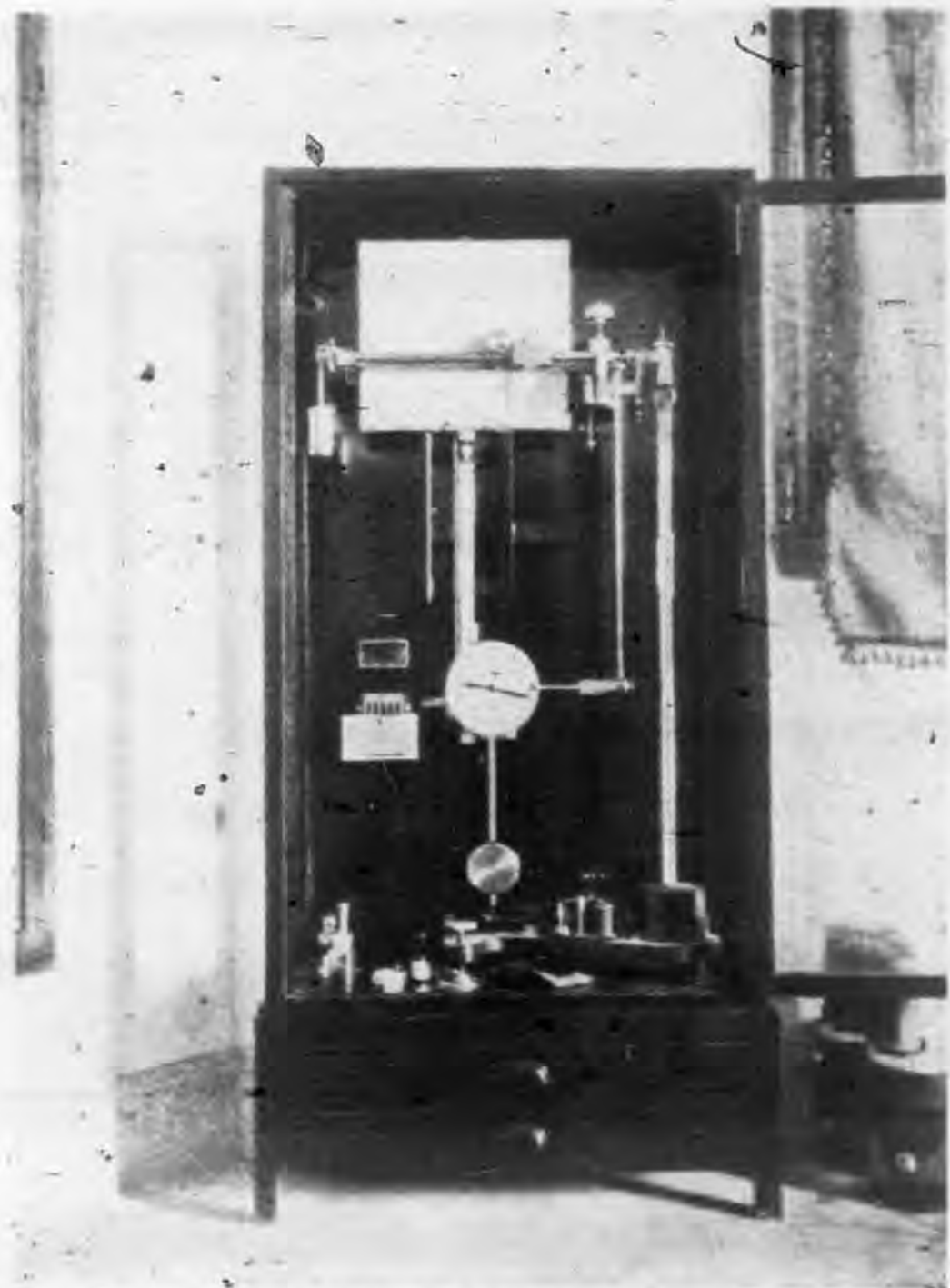
七號大型標準水銀氣壓表一具英國倫敦納格勒底桑勃拉廠製造



各式水銀氣壓表  
Mercury Barometers

一號精密水銀氣壓表一具德國富斯廠製造

二號標準水銀氣壓表一具德國富斯廠製造



電傳滑錘式自記水銀氣壓計  
Sprung-Fuess Barograph.

電傳滑錘式自記水銀氣壓計一具德國富斯廠製造

湯尼洛脫水銀氣壓表一具法國造

大號自記空盒氣壓計一具德國富斯廠製

自記顯微空盒氣壓計一具英國旭脫梅松廠製造

標準空盒氣壓表一具英國喀塞拉廠製造

袖衫空盒氣壓表一具英國喀塞拉廠製造

高度計一具法國立沙廠製造

## 關於溫度者

攝氏五分之一刻度乾濕球溫度表二具德國富斯廠製造

風扇溫度表一具德國富斯廠製造

攝氏五分之一刻度最高溫度表二具德國富斯廠製造

攝氏五分之一刻度最低溫度表二具德國富斯廠製造

攝氏五分之一刻度乾濕球溫度表一具德國倫勃萊廠製造

地面輻射溫度表二具德國倫勃萊廠及英國納格勒底桑勃拉廠製者各一

地內溫度表八具深度 0,5,10,20,25,50,75, 及 100 種 (cm) 者各一均德國富斯廠造

大號自記溫度計一具法立沙廠製造

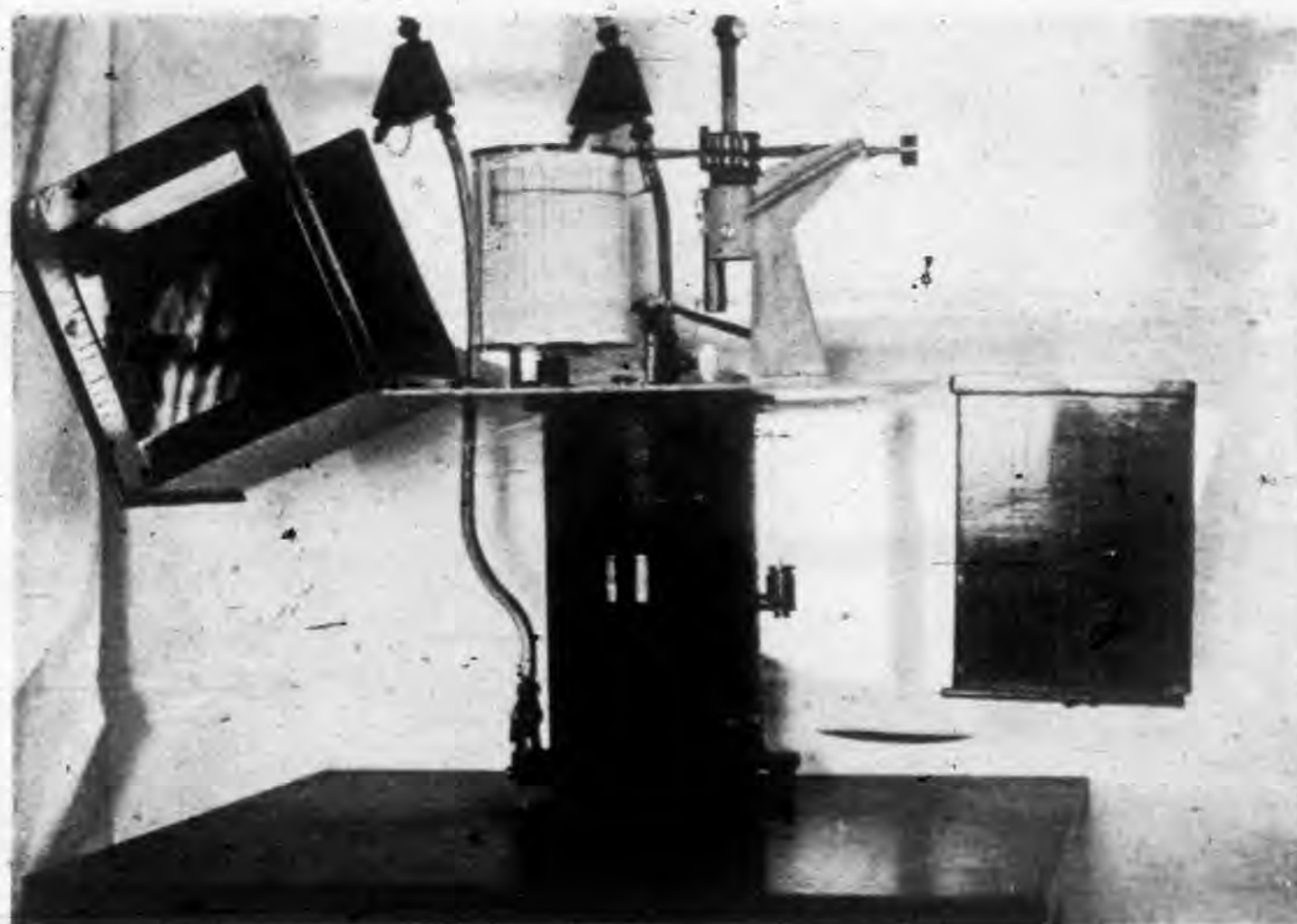
大號自記乾濕球溫度計一具法國立沙廠製造

自記地內溫度計一具英國納格勒底桑勃拉廠製造

## 關於風者

電傳自記風速計一具裝有自記筆二個一記風速之每秒米突數一記風速之每小時公里數 (Km) 法國

立沙廠製造



風壓風向聯合自記儀

Combined Anemo-Biograph and Wind Direction Recorder.

風速風向聯合自記儀一具英國納格勒底桑勃拉廠製造

電傳風向，風速，日照，雨量四項聯合自記儀一具美國弗力支廠製造

## 關於濕度及蒸發者

毛髮濕度表二具德國富斯廠及倫勃萊廠製者各一

七日及一日期自記毛髮濕度計各一具德國倫勃萊廠製造

皮希氏蒸發表一具英國喀塞拉廠製造

自記蒸發計一具法國立沙廠製造

## 關於降水者

八英寸口徑量雨計一具英國納格勒底桑勃拉廠製造

曲管式自記量雨計一具英國喀塞拉廠製造

自記量雪計一具德國富斯廠製造

一英尺口徑自記傾桶式量雨計一具(包在四項自記儀內)

## 其他儀器

芬曼氏測雲鏡一具英國納格勒底桑勃拉廠製造

裴松氏梳狀測雲筆一具依式自製

真空黑白球式太陽熱力計一具德國富斯廠製造

康培司篤克式日照計一具英國納格勒底桑勃拉廠製造

電傳日照計一具(包在四項自記儀內)

微塵計一具英國喀塞拉廠製造

一百十耗 (mm) 口徑赤道望遠鏡一具德國蔡司廠製造

六分儀一具德國潑辣德廠製造

飛利浦長短波無線電收音機一具

### 觀測紀錄凡例

(1) 本台設於清華大學校內其位置為東經一百十六度二十一分四十二秒北緯四十度零十六秒氣壓表水銀槽高出平均海面八十四公尺又五公寸量雨計高出平均海面七十公尺半

(2) 自二十一年一月一日開始觀測至二月底止每日上午九時下午三時各直接觀測一次三月份起增為六次即每日上午六時，九時，正午，午後三時，六時及午後九時用東經一百二十度標準時紀錄則取二十四次即每小時一次凡不在直接觀測時間之紀錄均從各自記儀器抄得

(3) 氣壓以耗 (mm) 為單位凡不在直接觀測時間之氣壓均依德國富斯廠所製之電傳滑錘式自記水銀氣壓計測定

(4) 溫度以攝氏刻度為標準

(5) 風向依納格勒底桑勃拉廠所製之風向風速聯合自記儀之風向部份測定採用十六向即北，北東北，東北，東東北，東，東東南，東南，南東南，南，南西南，西南，西西南，西，西西北，西北，北西北等是

(6) 風速之紀錄每小時公里數依法國立沙廠所製之電傳自記風速計測定最大風速則依英國納格勒底桑勃拉廠所製之風向風速聯合自記儀中之空管式風壓計測定此器以測最大風速為其特長

(7) 濕度以乾濕球濕度表及自記乾濕球濕度計測定濕球冰結時以毛髮濕度表及自記毛髮濕度計代之

(8) 雲之種類及多寡以目力測定雲速以裴松氏梳狀測雲竿測定

(9) 雲狀用國際氣象學會所審定之名稱

(10) 雲之多寡測定法以天空為雲所障蔽部份成數為斷如天無片雲為零天空之半有雲為 5 餘類推凡雲量自 0 2 9 稱為晴天自 3 7 9 稱為曇天 8 以上稱為陰天降雨或雪至百分之五耗以上者稱為雨天百分之五以下則記以「丁」符號

(11) 雨量以量雨計中所承得之雨水倒入量杯中測定之下雪時溶雪為水然後量之均以耗 (mm) 為單位

(12) 逐日最高最低溫度係自最高及最低溫度表讀得非選自一日二十四次紀錄中之最高及最低數或從自記溫度計抄得之最高及最低數逐日溫度最大較差即為上述最高最低二溫度之差數

(13) 逐日最高最低氣壓係自電傳滑錘式自記水銀氣壓計中抄得之數逐日氣壓最大差數即為此二數之差

(14) 每日天氣情形以下列之國際通行符號表示之

○	晴天
●	曇天
◐	陰天
●	雨天
×	雪
△	霧
▲	雹
⊖	電
≡	霧

≡	濕霧
≡	低霧
≡	霧
≡	露
▽	霜
∨	霧淞
○	空氣高爽
∩	雨淞
⊠	積雪

⇄	吹雪
⚡	雷
⚡	閃電
⚡	雷雨
⚡	大風
⚡	霜
⚡	冰針
⊕	日華
⊕	日暈

☾	月華
☾	月暈
☾	虹
☾	極光
☾	黃道光
☾	蜃氣

黃廈千識於清華大學氣象台

二十二年四月二十日



## **A Brief History of the Tsing Hua University Observatory.**

The idea of founding of a meteorological observatory at Tsing Hua University to serve as a laboratory for the students of meteorological class and as a research center for meteorology in N. China was first conceived in the year 1929 when a proposal was made by the Department of Geography of Tsing Hua University for its establishment. The President of the University (then, Mr. Lo Chia-lun) did not fail to recognize the significance of this proposal, since he well understood that such an undertaking was in perfect accord with the need of the Department of Geography, especially in view of the fact that in the metropolis of Peiping and the neighboring district there was still lacking a first class meteorological station equipped with up to date instrument. In the winter of 1929, a greater portion of the meteorological instrument was ordered by the Department of Geography from some prominent firms in Germany, Great Britain, France and the United States of America. The construction of the observatory building was began on July 1st of 1930, and was finished in May of 1931, when most of the instruments ordered from abroad had arrived at the University. Almost six months had been spent in mounting the instrument and testing before the Observatory began to take systematic observations; by January 1st of 1932, when the activity of the Observatory started in full swing.

## Equipments of the Tsing Hua University Observatory.

The building of the Observatory, consists of a tower standing on an octagonal base on the top of a small hill thirty feet high, and being made of reenforced concrete. It is a



氣象台及風箏廠

The Observatory and the Kite-Shelter.

five storied structure, the first story being the basement dug out in the hill. The top of the fifth story reaches a height ninety feet above the ground.

At the foot of the hill, and at a distance of about three hundred feet to the southwest of the tower, a rectangular space is reserved for the use of the "meteorological park" where the three rain-gauges and screens for thermometers, thermographs, hygographs are installed.

Concerning the instruments in-use at the Observatory, it was thought best to give a list of them, indicating therein the name, instrument type and number, and the firm where they are manufactured:—

### Apparatus for atmospheric pressure.

- One large standard barometer of Fortin type, No. 7, made by Negretti & Zambra of Great Britain.
- One precision barometer of Siphon type, No. 1 a, made by R. Fuess of Germany.
- One Sprung's sliding barograph made by R. Fuess.
- One normal barometer of Siphon type, No. 2, made by R. Fuess.
- One Tonnelot barometer
- One Aneroid barograph of large size, No. 78e, made by R. Fuess.
- One micro-barograph
- One pocket aneroid, No. 197, made by C. F. Casella of Great Britain.
- One Altimeter of 0-4000 meters, No. 10650, made by Jules Richard of France.
- One standard aneroid barometer, No. 260, made by Negretti & Zambra.

### Apparatus for temperature.

- Two maximum thermometers (graduated in  $1/5^{\circ}\text{C}$ ), No. 43e, made by R. Fuess.
- Two minimum thermometers (graduated in  $1/5^{\circ}\text{C}$ ), No. 43d, made by R. Fuess.
- Two psychrothermometers (graduated in  $1/5^{\circ}\text{C}$ ), No. 28, made by R. Fuess.
- One aspiration psychrometer, No. 32, made by R. Fuess.
- One psychrometer, No. 704, made by W. Lambrecht of Germany.
- One earth radiation thermometer, No. 1082, made by W. Lambrecht.

One terrestrial radiation thermometer, No 1027, made by Negretti & Zambra  
Four earth thermometers (depth 0, 5, 10, and 20cm), No 49, made by R Fuess  
Four earth thermometers (depth 25, 50, 75, and 100cm), No 48, made by R Fuess

One psychograph of large size, No 10416, made by Jules Richard.  
One thermograph of large size, No 10370, made by Jules Richard  
One aktinometer of Arago-Davy type, No. 47a, made by R Fuess  
One earth temperature recorder, No 1067, made by Negretti & Zambra

#### Apparatus for wind

One anemograph graduated in meters per second and kilometers per hour, No 10046 made by Jules Richard.  
One combined anemo-biograph & wind direction recorder made by Negretti & Zambra  
One quadruple register (wind direction, velocity, sunshine and rainfall recorder), No 440, made by Julien P Friez & Sons of U S A

#### Apparatus for humidity and evaporation

One polymeter, No 103a, made by W Lambrecht.  
One hygrometer, No 41, made by R Fuess  
One weekly hygrograph, No 1717, made by W. Lambrecht  
One daily hygrograph, No 1717a, made by W. Lambrecht  
One Piche's evaporimeter, No 676, made by C F Casella  
One self recording evaporimeter, No 10425, made by Jules Richard

#### Apparatus for precipitation.

One 8" raingauge, No 122, made by Negretti & Zambra  
One siphon rainfall recorder, No 754, made by C F Casella.  
One snowfall recorder, No 95a, made by R Fuess.

#### Others

One campbell stokes sunshine recorder, No 176, made by Negretti & Zambra  
One dust counter, No 161, made by C F Casella  
One Fineman's nephoscope made by Negretti & Zambra  
One 110 mm equatorial telescope made by Carl Zeiss of Germany,  
One sextant made by Plath of Germany  
One Philips long and short wave radio receiver (10 2400m)  
One Benson's comb nephoscope made at the Observatory

## METEOROLOGICAL OBSERVATIONS.

### Explanatory Notes.

The Tsing Hua University Observatory is located within the University compound, Tsing Hua Yuan, Peiping, China, at Lat  $40^{\circ} 0' 16''$  N, Long,  $116^{\circ} 21' 42''$  E, height of barometer above mean sea level 84.5 meters, height of rain gauge above mean sea level 70.5 meters

Hourly readings are taken from the instrumental records. Direct observations on cloud and the state of weather are made at three hour intervals from 6 a.m. to 9 p.m., 120 E Meridian standard time, namely, 6 a.m., 9 a.m., 12 noon, 3 p.m., 6 p.m. and 9 p.m. (In the first two months of 1932, direct observation at 6 a.m., 12 noon, 6 p.m. and 9 p.m. were temporarily omitted.)

In indicating the numerical values of several meteorological elements, metric measures are used.

Cloud forms are named according to the international classifications.

Reading for maximum temperature are taken from the maximum thermometer, and readings for minimum temperature from the minimum thermometer, they are not the highest and lowest values indicated in the records of a thermograph. The maximum diurnal range is derived from the above two extreme readings.

Extreme maximum and minimum values of atmospheric pressure for each day are taken from the Sprung-Fuess barograph, and are not the highest or lowest values of the 24 hourly readings. The maximum diurnal range is deduced from these two extreme readings.

Wind directions are taken from the record sheet of the Combined Anemo-biograph and Wind Direction Recorder, sixteen compass points being used. Extreme velocity of wind is taken from the same record sheet.

When the temperature is below the freezing point of water, hair hygrometer and hygrograph are used instead of psychrometer and psychrograph for humidity readings.

In registering the state of weather and other meteorological phenomena which may be observed during the day, international symbols are followed as closely as possible. Additional signs are made only in the case when they are not provided. The following are the Conventional Signs used in the daily Observations—

○ Clear	✱ Sleet
◐ Partly cloudy	⊕ Drift Snow
◑ Overcast	⊥ Thunder
● Rain	⚡ Lightning
✕ Snow	⚡⊥ Thunder Storm
△ Soft Hail	⚡ Gale
▲ Hail Stone	∞ Haze
≡ Fog	← Ice crystal in the Air
≡≡ Wet Fog	⊙ Solar Corona
≡≡≡ Ground Fog	⊕ Solar Halo
≡≡≡ Mist	☾ Lunar Corona
▷ Dew	☾ Luna Halo
┌ Hoar-frost	∩ Rainbow
√ Rime	⚡ Aurora
○ Excellent Visibility	☾ Zodiacal Light
∞ Glazeth-frost	∞ Mirage
⊠ Snow lying	

Sia Chien Hwang  
 Tsing Hua University Observatory  
 April 20, 1933

中華民國二十一年一月逐日各小時氣壓 (700mm+)

Atmospheric Pressure at every Hour of Day, in the Month of January, 1932. (700mm+)

日 期	Days of the Month	時間 Hours, Peiping Standard Time.											日 期	Days of the Month
		1	2	3	4	5	6	7	8	9	10	11		
1		63.22	63.08	63.12	62.74	62.52	62.44	62.73	63.10	63.33	63.42	63.22	62.53	1
2		60.38	60.10	59.94	59.20	58.81	58.62	58.38	57.97	58.02	57.87	57.22	56.20	2
3		56.25	56.77	57.52	57.76	58.25	58.76	58.57	58.02	57.71	58.42	58.12	57.32	3
4		53.72	53.49	53.43	53.22	53.09	53.12	53.17	53.62	53.71	54.12	53.72	53.08	4
5		52.60	52.60	52.51	52.12	51.82	51.72	51.82	52.19	52.59	53.05	52.72	52.12	5
6		63.42	64.62	65.62	65.71	66.47	67.62	68.72	69.67	71.89	72.64	73.02	72.23	6
7		74.21	74.02	73.82	73.22	72.72	72.37	72.26	72.02	72.16	71.95	71.35	70.32	7
8		67.62	67.67	67.42	67.06	66.60	65.82	66.97	67.12	67.47	67.48	67.34	66.42	8
9		63.12	63.12	63.14	63.13	63.37	63.82	64.42	65.12	66.11	66.17	66.27	66.22	9
10		67.30	67.32	67.42	67.42	67.42	67.42	67.47	67.62	68.11	68.11	67.43	66.08	10
11		60.85	60.72	60.65	60.26	60.22	60.12	60.92	61.65	63.16	63.37	63.22	62.52	11
12		68.32	68.92	69.22	69.31	69.50	69.76	69.82	70.32	70.39	70.79	70.86	70.38	12
13		69.32	69.29	69.24	68.72	68.42	68.12	68.24	68.13	68.67	68.72	68.42	67.65	13
14		63.77	64.47	65.22	65.54	65.82	66.27	66.65	67.60	68.34	68.93	68.95	68.42	14
15		67.75	68.15	68.33	67.91	67.75	68.12	68.62	68.94	69.50	69.89	70.11	69.52	15
16		71.43	71.41	71.22	71.04	70.55	70.82	71.10	71.32	71.56	71.67	71.27	70.42	16
17		68.18	68.21	68.07	67.81	67.34	67.34	67.52	67.72	68.18	68.22	68.02	67.32	17
18		69.87	70.17	70.58	70.91	71.04	71.52	72.05	72.46	72.33	73.28	73.07	72.43	18
19		73.22	73.23	73.10	72.56	72.22	72.07	72.23	72.76	72.98	72.99	72.62	71.82	19
20		67.88	67.69	67.16	66.61	66.61	66.76	66.92	66.96	67.30	67.65	67.15	66.82	20
21		69.09	69.22	69.52	69.91	70.12	70.73	71.32	72.04	73.12	73.52	73.56	73.11	21
22		71.62	71.35	71.22	70.91	70.65	70.38	70.42	70.68	70.84	70.83	70.42	69.46	22
23		68.01	67.43	67.52	67.21	67.05	66.94	67.16	67.44	67.83	68.00	67.65	66.91	23
24		65.34	65.67	65.52	65.01	64.86	65.02	65.36	65.65	66.26	66.38	65.88	65.07	24
25		64.60	64.75	64.53	64.07	64.11	64.34	64.82	64.82	65.58	65.52	65.38	64.54	25
26		64.44	64.98	64.92	64.67	64.35	64.28	64.33	64.71	65.32	65.15	64.98	64.45	26
27		66.52	66.62	66.72	66.65	66.82	66.64	66.75	67.08	67.72	67.22	66.92	66.20	27
28		60.93	60.72	60.63	60.18	59.91	59.87	60.03	60.01	60.70	60.86	60.62	60.42	28
29		62.23	62.63	62.98	63.00	63.26	63.72	64.47	65.32	66.02	66.52	66.82	66.62	29
30		69.64	69.72	69.42	68.92	68.46	68.24	68.12	68.52	68.65	68.39	67.94	66.92	30
31		62.97	62.72	62.47	62.12	61.87	61.77	61.71	61.77	62.17	62.22	62.38	61.55	31

日 期	Days of the Month	13	14	15	16	17	18	19	20	21	22	23	子 夜 Midn	日 期	Days of the Month
1		61.96	61.66	61.90	62.12	62.07	62.12	62.22	62.06	61.82	61.62	61.35	61.11	1	
2		55.18	54.53	53.98	53.86	53.74	53.72	53.72	54.52	54.99	55.30	55.82	56.02	2	
3		56.53	55.92	55.59	55.18	54.85	54.28	54.45	54.62	54.52	54.25	54.22	53.91	3	
4		52.50	52.04	51.93	51.98	52.14	52.59	52.72	52.62	52.92	53.12	53.07	52.89	4	
5		51.38	51.06	51.16	51.15	51.96	52.72	53.33	55.12	55.52	57.42	59.52	58.62	5	
6		71.82	71.08	71.94	71.62	72.67	73.54	73.92	73.94	74.81	75.35	75.01	74.74	6	
7		69.44	68.92	68.47	68.14	67.92	67.92	68.02	68.29	68.35	68.36	68.15	67.62	7	
8		65.62	65.02	64.62	64.52	64.12	63.92	63.77	63.52	63.42	63.32	63.22	63.17	8	
9		65.92	65.87	65.75	65.82	66.02	66.32	66.57	66.67	66.97	67.12	67.27	67.30	9	
10		65.19	64.40	64.37	64.08	63.59	63.51	63.29	63.08	63.06	62.63	62.02	61.03	10	
11		62.01	62.45	63.08	63.57	64.22	65.42	66.52	67.04	67.15	67.42	67.56	67.75	11	
12		69.52	68.98	69.01	68.91	68.82	69.40	69.39	69.55	69.63	69.72	69.64	69.42	12	
13		66.35	65.52	64.97	64.64	64.23	64.37	64.21	64.12	64.02	63.92	63.92	63.92	13	
14		67.72	67.02	66.87	67.02	67.22	67.84	67.96	68.22	68.10	67.99	67.92	67.89	14	
15		68.85	68.42	68.58	68.62	68.87	69.18	69.89	70.47	70.98	71.32	71.62	71.69	15	
16		69.82	69.12	69.03	68.52	68.42	68.49	68.62	68.78	68.87	68.93	68.67	68.52	16	
17		66.12	65.62	64.88	64.88	64.92	65.42	66.16	67.02	67.80	68.42	69.12	69.55	17	
18		71.35	71.07	71.02	71.12	71.34	71.90	72.19	72.47	72.84	73.22	73.20	73.22	18	
19		70.80	69.92	69.70	69.37	69.12	69.02	69.22	69.22	69.07	68.82	68.58	68.12	19	
20		66.42	66.11	65.98	66.12	66.12	66.33	66.77	67.14	67.33	67.98	68.49	68.78	20	
21		72.80	72.42	72.22	72.02	71.70	71.92	72.18	72.47	72.57	72.67	72.59	72.10	21	
22		68.19	67.63	67.31	67.09	67.04	67.42	67.48	67.42	67.51	67.70	67.92	68.06	22	
23		65.97	65.47	65.27	65.03	65.15	65.15	65.10	65.18	65.62	65.76	65.66	65.37	23	
24		64.22	63.86	63.95	63.16	63.68	63.66	63.79	63.92	64.25	64.11	64.40	64.59	24	
25		63.88	63.52	63.19	62.82	62.55	62.69	63.00	63.15	63.56	64.32	64.46	64.75	25	
26		64.02	64.04	64.22	64.42	64.26	64.54	64.82	65.43	66.16	66.42	66.69	66.62	26	
27		64.94	63.89	63.17	62.85	62.75	62.64	62.65	62.42	62.12	61.92	61.52	61.31	27	
28		59.92	58.93	59.36	59.72	60.12	60.62	61.06	61.52	61.82	62.12	62.15	62.20	28	
29		66.02	65.82	66.19	66.52	66.91	67.45	67.92	68.36	68.84	69.32	69.57	69.59	29	
30		65.85	65.01	64.47	64.12	64.23	64.33	64.32	64.25	64.03	63.72	63.47	63.12	30	
31		60.72	60.32	61.22	60.19	60.26	60.29	60.97	61.18	61.17	61.34	61.52	61.34	31	

中華民國二十一年二月逐日各小時氣壓 (700mm+)

Atmospheric Pressure at every Hour of Day, in the Month of February, 1932. (700mm+)

日 期	時間 Hours, Peiping Standard Time.												日 期
	1	2	3	4	5	6	7	8	9	10	11	中午 Noon	
1	61.28	61.13	60.92	60.56	60.27	60.37	60.42	60.62	61.29	61.43	60.90	60.28	1
2	62.35	62.40	62.72	63.04	63.04	63.43	64.40	65.25	66.37	67.23	67.53	67.32	2
3	70.50	70.91	71.00	70.91	70.83	70.84	71.11	71.42	71.66	71.77	71.63	70.94	3
4	71.41	71.40	71.39	71.40	71.46	71.60	71.98	72.30	72.81	73.04	73.06	72.70	4
5	73.01	73.15	73.27	73.10	73.15	73.10	73.26	73.70	73.95	74.07	73.72	73.08	5
6	71.91	71.83	71.69	71.32	71.13	71.10	71.26	71.30	71.69	71.48	71.17	70.56	6
7	67.32	67.09	66.82	66.38	66.04	65.88	66.45	66.75	67.23	66.85	66.67	66.03	7
8	67.76	68.09	68.40	68.52	68.79	68.97	69.42	69.86	70.40	70.67	70.91	70.52	8
9	70.49	70.52	70.54	70.46	70.36	70.41	70.52	70.80	71.19	70.93	70.50	69.82	9
10	67.00	66.78	66.34	65.82	65.56	65.63	55.73	65.80	66.22	65.71	65.31	64.23	10
11	62.28	62.35	62.24	62.02	61.94	62.26	62.34	62.50	62.85	62.90	62.90	62.22	11
12	62.20	62.98	63.01	63.35	63.77	64.12	64.71	65.72	66.15	66.40	66.60	66.48	12
13	67.79	67.84	67.76	67.57	67.42	67.32	67.42	67.79	68.21	67.83	67.59	66.76	13
14	64.72	64.33	64.00	63.51	63.46	63.37	63.28	63.21	63.33	63.03	62.59	62.03	14
15	66.20	66.35	66.38	66.50	67.06	67.27	67.74	68.35	68.43	68.04	67.50	67.00	15
16	72.63	72.80	72.80	72.70	72.77	73.02	73.75	74.60	75.04	75.10	74.65	74.10	16
17	73.95	74.17	73.84	73.86	73.73	73.72	73.90	74.20	74.12	73.78	73.42	72.60	17
18	70.41	70.35	70.28	69.96	69.81	69.82	69.97	70.33	70.12	70.10	69.50	68.59	18
19	63.25	62.83	62.48	62.19	61.93	62.22	62.88	63.73	64.38	64.49	64.32	64.22	19
20	63.49	61.57	63.16	62.60	62.39	62.20	62.28	62.70	62.75	62.70	62.13	61.36	20
21	59.37	58.95	58.51	58.22	57.71	57.58	57.44	57.70	57.87	57.83	57.73	57.16	21
22	65.01	65.81	66.35	66.84	66.84	68.12	69.00	69.62	70.74	70.30	70.01	69.45	22
23	72.85	73.70	73.80	74.00	74.21	74.42	74.50	75.00	75.01	74.63	74.39	74.00	23
24	72.70	72.71	72.46	72.30	72.12	72.18	72.12	72.45	72.1	72.16	71.59	70.97	24
25	68.55	68.27	67.86	67.71	67.48	67.29	67.25	67.50	67.64	67.43	67.01	66.50	25
26	66.87	65.82	66.77	67.14	67.30	67.50	67.97	68.61	69.03	69.26	69.40	69.45	26
27	69.45	69.26	68.95	68.63	68.40	68.21	68.03	68.26	68.18	68.25	67.85	67.27	27
28	67.16	66.92	66.78	66.30	66.17	66.13	66.48	66.86	67.19	67.01	66.74	66.18	28
29	63.66	63.38	62.73	62.33	62.07	62.02	62.04	62.30	62.47	62.13	61.57	61.01	29

日 期	13	14	15	16	17	18	19	20	21	22	23	午夜 Midn	日 期
1	59.00	59.10	59.26	59.95	60.00	59.87	60.28	60.30	61.07	61.71	62.03	62.04	1
2	66.70	66.90	66.85	67.06	67.43	67.78	68.30	69.10	69.62	69.83	70.03	70.27	2
3	70.05	69.50	69.50	69.35	69.60	70.01	70.47	70.68	70.97	71.17	71.28	71.38	3
4	71.85	71.20	71.10	70.74	71.07	71.54	71.87	71.95	72.31	72.63	72.74	72.87	4
5	72.37	71.76	71.50	71.18	71.22	71.33	71.92	72.00	72.20	72.15	72.03	71.99	5
6	69.54	68.69	68.43	68.02	67.75	67.71	67.69	67.68	67.69	67.73	67.62	67.48	6
7	65.28	64.73	64.84	64.70	64.77	65.12	65.40	65.53	65.97	66.50	66.80	67.35	7
8	69.80	69.34	69.26	69.16	69.29	69.64	69.82	70.04	70.35	70.73	70.78	70.40	8
9	68.82	68.17	68.06	67.52	67.40	67.38	67.70	67.85	68.00	67.73	67.43	67.82	9
10	63.28	62.45	62.30	61.85	61.79	62.08	62.19	62.36	62.45	62.52	62.46	62.45	10
11	61.33	60.60	60.50	60.50	60.68	60.93	61.23	61.41	61.73	62.02	62.06	62.21	11
12	65.95	65.50	65.58	65.30	65.83	66.28	66.72	66.72	66.80	67.14	67.37	67.72	12
13	65.86	65.03	64.80	64.33	64.18	64.49	64.79	64.96	65.00	64.98	64.89	64.84	13
14	61.11	60.35	59.82	60.17	61.30	61.81	63.40	63.81	64.47	65.16	66.03	66.21	14
15	66.27	66.00	66.10	66.70	67.36	68.50	69.62	70.38	71.32	71.84	72.11	72.40	15
16	73.24	72.57	72.21	72.07	71.97	72.15	72.40	72.87	73.30	73.40	73.78	73.90	16
17	71.51	70.78	70.19	70.12	70.08	70.30	70.56	70.57	70.65	70.60	70.52	70.46	17
18	67.50	66.42	65.62	65.12	64.90	64.79	64.78	64.65	64.61	64.47	64.01	63.69	18
19	63.90	63.60	62.71	62.85	62.80	63.06	63.56	63.54	63.67	63.71	64.00	63.76	19
20	60.11	59.23	58.54	58.41	58.00	58.42	58.93	59.31	59.68	59.66	59.65	59.50	20
21	56.77	56.43	56.56	56.61	57.30	58.48	59.23	60.21	61.27	62.59	63.52	64.08	21
22	68.87	68.68	68.68	68.22	68.87	69.39	69.79	70.20	70.96	71.36	71.80	72.50	22
23	72.99	72.20	71.86	71.56	71.44	71.75	72.01	72.10	71.20	72.40	72.43	72.70	23
24	69.96	69.00	68.43	67.93	67.71	67.96	68.20	68.54	68.80	69.00	68.90	68.77	24
25	65.57	65.04	64.75	64.45	64.45	64.80	65.30	65.67	65.04	66.10	66.05	66.57	25
26	68.83	68.42	68.04	68.00	68.13	68.57	69.12	69.55	69.52	69.45	69.57	69.50	26
27	66.40	65.60	65.33	65.02	65.11	65.45	66.15	66.84	67.18	67.34	67.46	67.32	27
28	65.24	64.67	64.30	63.90	63.62	63.63	63.84	64.35	64.70	64.68	64.47	63.96	28
29	60.25	59.41	59.31	58.93	58.82	59.05	59.32	59.60	60.11	60.12	59.86	59.46	29

## 中華民國二十一年三月逐日各小時氣壓 (700mm+)

Atmospheric Pressure at every Hour of Day, in the Month of March, 1932. (700mm+)

日 期	時間 Hours, Peiping Standard Time.											日 期	
	1	2	3	4	5	6	7	8	9	10	11		中午 Noon
1	59.35	59.36	58.96	58.80	58.98	59.00	58.90	59.45	59.63	59.50	59.11	58.47	1
2	60.01	60.60	60.92	60.87	61.13	61.21	61.11	61.81	62.30	62.34	62.21	61.80	2
3	60.35	60.25	59.67	59.61	59.48	59.34	59.39	59.76	59.96	59.88	59.61	59.18	3
4	57.75	57.40	56.98	56.59	56.50	56.30	56.67	56.87	56.73	56.40	55.92	55.00	4
5	54.30	54.68	54.78	55.31	56.27	57.60	58.60	59.71	60.24	60.58	60.63	60.38	5
6	63.20	63.13	63.12	63.03	62.95	63.05	63.78	64.20	64.31	64.35	63.80	63.28	6
7	61.25	60.54	59.73	9.34	59.10	59.30	59.40	59.90	60.46	60.40	60.18	59.90	7
8	62.07	62.19	61.73	61.30	61.29	61.52	61.62	62.00	62.29	62.10	61.73	61.44	8
9	59.50	58.90	58.23	57.22	56.20	55.64	55.60	55.67	55.60	55.20	54.21	52.97	9
10	52.71	53.00	53.25	53.06	53.29	54.59	54.73	55.06	55.16	55.44	55.31	55.22	10
11	53.74	53.71	53.01	52.50	52.32	52.03	51.72	51.80	51.55	51.25	50.63	50.20	11
12	55.40	55.91	55.65	55.50	55.54	56.15	56.90	56.20	57.89	58.15	57.99	57.79	12
13	64.71	64.75	64.89	65.00	65.26	65.68	66.24	66.80	67.43	67.51	67.52	66.91	13
14	67.30	67.13	66.85	66.30	65.70	65.51	65.61	65.95	65.89	65.59	65.25	64.44	14
15	62.30	62.03	61.72	61.56	61.51	61.61	62.04	62.10	62.25	62.00	61.70	61.60	15
16	66.80	66.71	66.37	66.18	66.21	66.43	66.49	66.74	66.75	66.39	65.50	64.79	16
17	61.75	61.75	61.61	61.48	61.43	61.55	61.87	62.16	62.25	62.08	61.71	61.31	17
18	62.33	62.29	61.99	61.60	61.50	61.86	61.95	62.31	62.51	62.41	62.30	61.94	18
19	65.78	65.73	65.41	65.24	65.25	65.19	65.69	66.98	66.70	66.71	66.26	65.38	19
20	66.94	66.89	66.66	66.54	66.49	66.21	66.79	67.00	66.78	66.71	66.37	65.53	20
21	65.09	64.98	64.62	64.49	64.33	64.09	64.79	64.48	63.96	63.62	62.85	62.05	21
22	62.02	62.23	62.58	62.50	62.83	63.15	63.50	63.75	64.02	64.36	64.04	63.51	22
23	64.83	65.03	65.19	65.68	65.69	65.51	65.67	65.59	65.68	65.74	65.29	64.29	23
24	61.07	60.70	60.32	60.01	60.09	60.10	61.00	61.15	60.80	60.60	60.00	58.87	24
25	54.39	54.19	53.62	53.00	53.00	53.21	53.47	53.78	54.08	54.02	53.79	53.29	25
26	50.88	50.41	50.00	50.09	50.22	51.14	51.60	52.50	53.13	54.64	55.11	55.13	26
27	59.79	59.89	59.95	60.25	60.29	60.35	60.39	60.51	60.49	60.13	59.28	57.80	27
28	60.49	60.15	59.92	59.69	59.82	59.73	59.71	59.75	60.13	59.70	59.47	59.31	28
29	60.80	60.77	60.65	60.68	60.91	61.18	61.80	62.11	62.10	62.20	61.89	61.24	29
30	64.49	64.63	64.91	65.09	65.45	65.79	66.34	66.60	66.28	66.60	66.08	65.08	30
31	60.81	60.31	60.00	59.90	59.65	59.91	59.95	59.86	59.55	59.28	58.70	57.75	31

日 期	13	14	15	16	17	18	19	20	21	22	23	子夜 Midn	日 期
1	57.85	57.41	57.10	57.10	57.46	58.00	58.38	58.73	59.07	59.28	59.30	59.62	1
2	60.76	60.10	59.80	59.74	59.70	60.05	60.40	60.48	60.10	60.22	60.28	60.30	2
3	58.41	57.52	56.88	56.94	57.21	57.55	57.97	58.43	58.42	58.39	58.18	58.03	3
4	54.04	53.10	52.71	52.10	52.00	52.21	52.27	52.56	53.16	53.55	53.68	54.10	4
5	60.40	60.05	60.06	60.00	60.00	60.71	61.49	61.80	62.20	62.55	62.56	62.83	5
6	62.71	62.20	61.78	61.55	61.40	61.80	62.30	62.40	62.47	62.33	62.13	61.64	6
7	59.30	58.81	58.77	58.62	58.40	58.63	59.07	59.45	60.09	60.68	61.26	61.95	7
8	60.38	59.35	59.14	58.61	58.42	58.39	58.31	58.30	58.67	58.99	59.40	59.64	8
9	52.00	51.10	50.60	50.01	50.04	50.56	50.70	51.47	51.85	52.10	52.06	52.60	9
10	54.78	54.11	53.50	53.49	53.63	54.16	54.30	54.82	55.04	54.90	54.53	54.56	10
11	49.72	49.44	49.35	49.34	49.90	51.92	51.25	52.35	53.54	54.22	54.89	55.00	11
12	57.20	56.82	57.00	56.65	56.90	57.45	58.51	59.50	60.58	61.53	62.68	63.60	12
13	66.40	65.51	65.46	65.60	66.03	66.65	67.35	67.95	68.14	68.20	67.99	67.60	13
14	63.60	62.80	62.58	62.09	62.06	62.08	62.33	62.48	62.51	62.54	62.67	62.42	14
15	61.69	61.76	62.06	62.07	62.85	63.77	64.72	65.52	65.72	66.01	66.30	66.54	15
16	63.65	62.79	61.95	61.22	60.67	60.70	60.90	60.90	61.14	61.50	61.60	61.65	16
17	60.50	59.76	59.44	59.19	59.26	59.54	59.92	60.75	61.42	61.80	61.86	62.31	17
18	61.40	61.12	61.15	61.31	61.68	62.44	63.62	64.92	65.92	66.53	66.76	66.75	18
19	64.73	64.02	63.43	63.12	63.11	63.60	64.45	65.25	66.10	66.43	66.64	66.90	19
20	64.85	64.00	63.28	63.10	63.00	63.45	63.90	64.63	64.70	65.10	65.21	65.21	20
21	61.10	60.29	59.95	59.40	59.15	59.78	59.22	59.71	60.59	61.57	62.02	62.19	21
22	62.91	62.43	62.02	61.85	61.81	62.17	62.72	63.49	64.19	64.40	64.39	64.79	22
23	63.39	62.22	61.60	61.14	60.90	60.80	60.80	60.99	61.10	61.25	61.43	61.29	23
24	57.89	56.78	56.08	55.74	55.30	55.03	55.10	55.13	54.95	54.89	54.64	54.60	24
25	52.80	52.00	51.50	51.00	50.92	51.06	50.90	51.30	51.46	51.23	51.39	50.90	25
26	55.08	54.98	54.74	55.00	55.40	56.10	56.71	57.54	58.13	58.70	59.10	59.40	26
27	57.20	57.06	56.91	57.81	59.01	59.65	60.07	61.28	61.39	61.33	61.30	61.05	27
28	58.85	58.50	58.32	58.41	58.42	58.46	59.15	59.71	60.30	60.51	60.55	60.56	28
29	60.84	60.29	59.55	59.62	59.80	60.08	60.98	62.11	63.02	63.52	64.01	64.38	29
30	64.50	63.62	62.80	62.41	61.90	61.55	61.65	61.84	62.05	61.99	61.60	61.24	30
31	55.65	55.50	54.66	53.88	53.26	53.07	53.10	53.40	53.65	53.89	53.80	53.81	31

中華民國二十一年一月逐日各小時氣溫(°C)

Air Temperature at every Hour of Day, in the Month of January, 1932. (°C)

日 期	Days of the Month	時間 Hours, Peiping Standard Time.											日 期	Days of the Month
		1	2	3	4	5	6	7	8	9	10	11		
1		-11.0	-11.2	-11.6	-12.0	-12.3	-12.9	-14.0	-13.7	3.8	-1.9	0.0	0.8	1
2		-9.8	-11.2	-10.3	-9.0	-10.8	-11.0	-11.8	-9.1	6.1	-2.5	0.6	5.0	2
3		6.0	5.3	4.9	3.4	3.4	2.5	2.2	2.0	3.1	4.5	6.0	6.0	3
4		-3.4	-4.0	-4.0	-4.6	-5.1	-5.0	6.0	4.0	7.8	8.3	8.0	9.7	4
5		-2.5	-2.5	-3.7	-4.3	-4.6	-5.2	-5.6	-5.5	3.4	0.7	4.0	6.0	5
6		-4.0	-4.8	-5.2	-5.9	-6.9	-7.0	7.3	-7.7	-7.4	-6.6	-6.0	-5.6	6
7		-9.9	-9.4	-9.0	-8.9	-9.0	-10.7	-8.0	-7.9	6.8	-5.7	5.0	-4.4	7
8		-5.0	-5.9	-4.9	-4.0	-5.5	5.6	-6.0	-6.1	3.9	-2.6	-2.0	-1.5	8
9		-5.6	-10.0	-10.0	-9.3	-10.0	-11.0	-11.1	-10.9	8.0	-4.5	-1.5	2.0	9
10		-6.4	-8.0	-8.1	-7.7	-8.0	-9.6	-10.1	-10.9	-7.1	-4.1	0.0	1.0	10
11		-5.0	-6.3	-6.0	-5.0	-4.5	-4.0	1.3	0.9	1.0	1.3	1.6	2.0	11
12		-2.7	-3.0	-3.2	-3.1	-3.0	-3.4	-3.9	-3.5	-2.0	-1.6	-1.2	-0.4	12
13		-5.8	-3.2	-6.5	-8.0	-8.9	-8.9	-9.0	-9.6	4.5	-0.4	2.8	4.2	13
14		-6.9	4.0	3.6	3.4	1.6	1.7	1.4	1.2	2.2	3.9	4.3	4.5	14
15		-4.8	-6.3	-5.9	-3.7	-4.4	-2.8	-3.1	-3.4	-2.2	-0.6	0.5	1.3	15
16		-4.3	-4.5	-4.8	-6.1	-8.0	-7.2	-10.0	-10.2	-7.4	-4.7	-2.4	-1.0	16
17		-7.9	-8.6	-9.2	-9.1	-9.2	-10.2	-10.7	-10.8	-9.2	-5.1	-2.9	-0.9	17
18		-2.5	-2.5	-3.8	-6.0	-5.1	-5.1	-5.4	-6.9	-2.5	0.1	1.6	2.6	18
19		-8.0	-8.8	-8.7	-8.4	-9.0	-9.7	-9.7	-10.1	8.0	-6.0	-4.1	-2.9	19
20		-7.9	-8.2	-7.2	-6.4	-6.2	-6.7	-6.8	-6.8	5.5	-3.3	-1.2	0.7	20
21		-5.0	-5.9	0.3	-0.3	-0.1	-1.1	-2.0	-2.4	0.8	-0.3	1.5	1.6	21
22		-8.8	-8.3	-6.1	-8.4	-9.7	-10.1	-10.8	-10.3	-3.9	-0.5	3.0	5.1	22
23		-6.0	-6.3	-7.2	-7.6	-8.3	-8.0	-9.0	-7.2	-2.3	1.6	3.7	4.6	23
24		-6.4	-6.6	-7.4	-8.0	-8.6	-8.5	-8.2	-7.8	3.4	0.8	3.4	5.7	24
25		-5.8	-5.4	-4.7	1.4	0.6	-0.1	-0.4	-0.2	1.4	4.9	6.1	7.9	25
26		4.1	3.5	1.6	1.3	2.0	0.2	-0.1	-1.8	1.9	4.0	5.2	5.2	26
27		-1.7	-2.8	-2.2	-1.4	-3.8	-3.3	-6.5	-6.2	-3.5	-0.5	1.6	3.2	27
28		-7.2	-7.7	-8.1	-9.0	-9.3	-9.3	-9.2	-9.3	-5.6	-3.0	-0.8	1.0	28
29		-2.6	-1.0	-0.9	-1.4	-2.2	-1.5	-1.5	-0.3	0.1	1.7	6.4	7.6	29
30		-1.8	-2.7	-2.6	-2.0	-1.8	-1.6	-1.5	-1.4	-0.9	0.2	1.2	1.6	30
31		-5.3	-6.3	-7.6	-7.7	-8.0	-8.0	-7.4	-7.3	-4.1	-2.2	-1.5	-1.1	31

日 期	Days of the Month	13	14	15	16	17	18	19	20	21	22	23	子夜 Midn	日 期	Days of the Month
1		1.4	2.8	2.8	3.1	-2.0	-3.2	-5.0	-6.0	-7.0	-8.1	-8.5	-8.0	1	
2		6.0	4.6	3.2	2.1	1.1	0.3	0.2	7.7	7.2	6.9	6.7	6.0	2	
3		6.0	5.1	4.9	4.0	3.2	2.0	1.1	-0.9	-1.2	-2.1	-2.6	-3.2	3	
4		10.9	9.3	9.0	6.0	4.0	3.0	2.0	0.3	-1.1	-2.2	-2.9	-3.3	4	
5		7.0	8.0	8.4	6.9	3.7	2.8	2.0	4.1	5.0	2.3	-2.0	-2.1	5	
6		-5.1	-5.4	-6.0	-7.0	-7.8	-8.4	-9.5	-9.9	-10.1	-10.2	-10.1	-10.0	6	
7		-3.8	-3.3	-2.8	-3.2	-3.3	-3.3	-3.6	-3.9	4.1	-4.3	-4.6	-4.8	7	
8		-1.0	-0.4	0.6	-1.3	-2.8	-3.0	-1.0	-3.7	-3.4	-3.6	-3.7	-7.9	8	
9		3.6	4.3	5.0	4.3	1.3	-0.4	-1.5	-2.2	-3.8	-5.0	-6.0	-6.6	9	
10		2.7	3.8	3.9	3.5	0.5	-2.5	-4.5	-4.7	-4.5	-3.9	-4.0	-5.2	10	
11		2.2	2.0	1.9	1.2	0.7	0.1	-0.8	-1.2	-1.6	-1.9	-2.0	-2.4	11	
12		0.2	0.8	1.0	1.2	0.3	0.0	-0.4	-2.4	-5.0	-6.0	-7.0	-7.2	12	
13		5.7	6.1	6.0	4.9	3.1	0.8	-1.6	-3.1	-3.0	-4.4	-6.0	-6.8	13	
14		5.3	5.9	6.0	5.4	5.0	0.6	-2.2	-3.4	-4.7	-5.4	-5.5	-6.1	14	
15		1.3	2.1	1.4	1.0	0.0	-2.0	-2.3	-3.3	-3.8	-4.4	-4.0	-4.0	15	
16		0.6	1.5	1.5	0.9	-0.7	-2.5	-3.8	-4.9	-5.4	-6.3	-7.4	-7.5	16	
17		1.3	2.4	2.8	2.2	0.6	-1.4	-2.0	-2.6	-3.2	-3.2	-2.9	-2.6	17	
18		3.2	3.8	4.5	3.8	1.5	-1.1	-2.0	-3.4	-5.1	-6.5	-7.4	-7.3	18	
19		-1.7	0.0	-0.2	0.0	-1.2	-3.3	-4.8	-6.0	-6.7	-7.1	-7.2	-7.7	19	
20		2.3	2.1	2.1	1.9	1.2	-1.4	-1.8	-1.9	-3.3	-2.9	-3.1	-4.0	20	
21		2.5	2.5	2.5	2.0	0.7	-0.5	-1.6	-2.8	-4.8	-5.6	-6.9	-8.2	21	
22		5.7	6.1	5.9	5.3	3.5	2.1	0.5	-0.1	0.5	-2.2	-3.6	-5.1	22	
23		6.2	6.4	6.1	5.1	4.0	2.6	1.6	1.0	-1.6	-2.9	-3.1	-4.9	23	
24		7.6	8.6	7.2	6.0	4.4	2.1	1.6	1.1	-0.8	-2.2	-3.2	-4.6	24	
25		8.6	8.2	8.4	7.6	5.4	3.6	2.9	3.6	6.0	5.0	3.9	4.2	25	
26		5.5	5.6	5.3	4.7	4.2	3.4	3.2	0.7	0.4	0.6	-0.9	-0.6	26	
27		3.1	4.1	3.8	3.4	2.6	0.8	-1.4	-3.4	-3.8	-5.5	-6.3	-6.4	27	
28		2.3	3.5	3.6	3.8	2.6	1.4	1.0	1.3	0.3	-0.4	-0.4	-1.4	28	
29		8.1	9.5	9.2	8.0	6.1	3.0	2.3	1.1	0.3	-1.1	-1.1	-1.5	29	
30		2.5	3.4	3.6	3.3	2.4	1.4	0.8	-0.4	-1.6	-3.0	-4.0	-3.8	30	
31		-0.6	-0.7	-1.0	-1.1	-1.2	-2.1	-3.4	-3.7	-4.1	-4.3	-3.1	-3.7	31	



中華民國二十一年二月逐日各小時氣溫(°C)

Air Temperature at every Hour of Day, in the Month of February, 1932. (°C)

日 期	Days of the Month	時間 Hours, Peiping Standard Time.											日 期	Days of the Month
		1	2	3	4	5	6	7	8	9	10	11		
1		-3.7	-3.6	-3.6	-3.6	-3.6	-3.6	-3.5	-3.4	-2.8	-2.4	-2.0	-1.0	1
2		-3.6	-3.8	-3.3	-3.8	-4.0	-4.1	-3.9	-3.2	-2.1	-0.7	-0.4	0.7	2
3		-3.3	-3.4	-3.9	-4.8	-4.6	-6.2	-6.4	-6.4	-4.7	-3.0	-0.9	-0.2	3
4		-5.3	-5.2	-5.6	-6.0	-7.0	-7.3	-7.2	-6.5	-4.7	-3.4	-2.0	-0.8	4
5		-6.5	-6.3	-6.8	-7.2	-8.4	-9.0	-9.7	-7.3	-5.6	-3.3	-1.9	-0.4	5
6		-9.8	-10.4	10.6	10.6	-11.3	-11.3	-11.9	-10.7	-5.6	-2.4	-1.7	1.1	6
7		-8.6	-9.3	-10.0	-10.2	-10.7	-10.8	-11.7	-12.2	-7.2	-3.5	-0.8	1.1	7
8		-7.1	-8.9	-8.8	-8.0	-6.8	-6.5	-6.8	-7.8	-4.1	-2.9	-0.8	0.0	8
9		-4.6	-5.9	-5.9	-5.9	-5.8	-6.0	-6.2	-5.9	-4.2	-3.0	-2.5	-1.0	9
10		-6.1	-7.2	-8.8	-9.8	-8.8	-9.7	-10.2	-10.4	-6.0	-2.9	-0.2	0.8	10
11		-7.6	-8.5	-9.6	-10.4	-10.0	-10.2	-10.6	-10.2	-7.0	-3.3	-3.6	-1.0	11
12		-1.4	-2.4	-3.6	-3.9	-4.0	-4.6	-5.7	-4.7	-2.1	-1.4	-0.7	0.2	12
13		-6.0	-5.4	-6.5	-7.9	-9.2	-9.8	-10.3	-8.2	-3.0	-1.4	1.7	3.8	13
14		-6.0	-7.1	-6.4	-7.1	-7.7	-8.5	-9.4	-9.7	-4.1	-0.9	1.0	2.0	14
15		-4.5	-4.4	-4.7	-5.5	-5.9	-7.4	-8.6	-7.4	-3.5	-3.8	-2.1	-0.9	15
16		-9.4	-9.2	-9.8	-9.4	-9.9	-10.1	-10.2	-9.7	-8.0	-6.7	-5.3	-4.2	16
17		-8.6	-9.2	-8.7	-9.1	-9.4	-9.8	-10.1	-10.0	-7.0	-5.7	-4.4	-3.6	17
18		-11.4	-11.4	-11.8	-12.4	12.5	-13.3	-13.4	-12.8	9.0	-6.6	-5.3	-4.2	18
19		-8.4	-9.3	-9.5	-9.4	-9.0	-7.9	-6.7	-4.3	4.2	-4.0	-2.8	-2.2	19
20		-8.0	-9.2	-10.1	-10.5	-11.2	-11.5	-10.7	-10.4	7.9	-4.9	-3.0	-2.0	20
21		-5.6	-5.8	-7.1	-7.9	-8.0	-8.8	-9.6	-8.8	3.2	0.0	1.1	2.2	21
22		-1.4	-1.6	-2.5	-3.4	-3.0	-4.0	-5.0	-3.3	1.3	-0.1	1.6	1.8	22
23		-6.1	-7.6	-8.7	-9.2	-10.1	-10.5	-10.4	-8.8	4.5	-2.4	-1.2	0.7	23
24		-2.8	-3.4	-4.0	-4.2	-5.4	-6.0	-5.9	-5.6	4.3	-2.6	-1.3	-0.9	24
25		-7.0	-7.6	-8.8	-9.9	-10.1	-10.8	-9.8	-8.2	5.7	-3.4	-2.9	-1.8	25
26		-4.5	-5.0	-5.4	-7.7	-5.6	-6.4	-6.8	-6.2	5.9	-5.2	-4.8	-4.7	26
27		-7.7	-7.5	-8.2	-8.0	-8.0	-7.8	-7.7	-5.6	4.5	-3.1	-2.1	-1.8	27
28		-5.7	-6.2	-5.7	-4.8	-5.9	-6.4	-6.6	-5.6	2.3	0.5	2.6	3.3	28
29		-4.1	-3.7	-5.7	-6.8	-7.3	-6.6	-6.2	-3.2	2.5	4.0	7.8	9.1	29

日 期	Days of the Month	13	14	15	16	17	18	19	20	21	22	23	子夜 Midn	日 期	Days of the Month
1		-0.8	-1.3	-1.6	-1.9	-1.8	-4.7	-7.7	-2.6	-1.1	-2.3	-2.7	-2.7	1	
2		1.6	1.4	2.0	1.7	1.0	0.3	-0.4	-1.4	-1.5	-1.7	-2.7	-3.1	2	
3		1.0	1.6	1.1	0.5	-0.3	-2.2	-4.1	-5.1	-6.1	-7.2	-7.8	-4.6	3	
4		0.0	0.8	1.2	1.1	0.3	-2.3	-3.6	-4.8	-5.6	-6.2	-5.2	-5.9	4	
5		0.4	0.8	1.9	1.6	0.8	-1.5	-3.6	-5.4	-5.9	-7.2	-8.1	-9.2	5	
6		2.8	3.4	3.8	4.0	2.6	-0.3	-2.8	-4.2	-4.9	-6.3	-7.5	-8.4	6	
7		2.7	4.3	4.0	3.7	3.4	-0.6	-3.0	-5.0	-5.8	-5.4	-7.7	-7.6	7	
8		1.3	1.3	1.7	1.4	0.0	-1.7	-3.7	-4.8	-4.8	-4.4	-3.5	-4.1	8	
9		0.3	0.8	0.9	1.4	0.1	-1.1	-2.0	-3.0	-3.2	-4.0	-4.8	-6.4	9	
10		1.7	2.6	2.3	1.9	1.2	-0.8	-2.0	-3.1	-3.1	-4.3	-5.4	-6.5	10	
11		0.4	1.0	1.5	1.1	0.8	0.4	0.4	0.1	0.3	0.2	-1.2	-1.6	11	
12		1.0	1.6	2.1	2.1	1.7	0.1	-0.8	-2.9	-2.8	-5.2	-4.8	-5.2	12	
13		5.1	5.0	5.0	5.1	3.7	1.6	-0.6	-1.0	-1.0	-2.5	-5.1	-4.8	13	
14		4.5	7.2	7.4	6.6	4.2	3.1	4.5	-0.9	0.2	-1.1	-3.0	-3.5	14	
15		1.5	2.6	2.6	1.4	0.1	-2.5	-4.0	-5.2	-6.3	-7.1	-7.8	-8.9	15	
16		-3.3	-2.7	-2.3	-2.0	-2.0	-4.1	-4.8	-5.9	-6.7	-7.9	-8.3	-8.7	16	
17		-2.3	-2.0	-1.5	-1.2	-1.4	-3.4	-5.6	-6.5	-7.4	-8.8	-10.1	-9.3	17	
18		-3.8	-1.7	-1.5	-1.3	-1.8	-3.8	-6.4	-7.1	-6.6	-6.4	-6.6	-7.1	18	
19		-1.2	-0.5	0.0	0.0	-0.2	-1.1	-3.5	-3.6	-5.0	-6.7	-6.6	-8.4	19	
20		-0.4	1.2	3.3	3.9	3.1	-0.2	-1.7	-2.0	-3.7	-4.6	-5.6	-7.8	20	
21		4.0	4.5	4.7	4.9	4.2	2.9	1.5	0.1	1.8	1.7	0.8	-0.2	21	
22		3.2	4.3	4.7	3.9	2.5	0.7	-0.3	-1.3	-2.2	-3.8	-4.6	-5.1	22	
23		1.2	1.5	1.8	2.0	1.2	0.0	-0.4	-0.9	-1.2	-1.8	-3.1	-2.1	23	
24		-0.4	0.1	1.0	1.1	0.7	-1.8	-3.7	-5.2	-4.8	-4.9	-5.3	-6.0	24	
25		-0.6	0.5	0.7	0.1	-0.6	-1.8	-2.6	-2.7	-3.0	-3.4	-4.1	-4.2	25	
26		-4.2	-3.8	-3.5	3.6	-3.8	-4.6	-5.2	-5.6	-6.2	-6.2	-6.3	-7.3	26	
27		-1.6	-0.2	0.4	0.1	-0.3	-0.5	-1.6	-3.3	-3.4	-4.4	-5.3	-5.9	27	
28		4.3	4.9	4.4	5.1	4.7	3.4	3.3	1.0	-1.0	-0.8	-1.1	-3.3	28	
29		10.8	12.2	13.4	12.9	12.4	8.9	5.4	3.5	-0.8	-2.0	-2.5	-3.2	29	

中華民國二十一年三月逐日各小時氣溫(°C)

Air Temperature at every Hour of Day, in the Month of March, 1932. (C)

日期 Days of the Month	時間 Hours, Peiping Standard Time.											日期 Days of the Month	
	1	2	3	4	5	6	7	8	9	10	11		中午 Noon
1	-3.7	-3.2	-4.0	-8	-5.8	-4.9	-4.8	-1.2	1.2	8.6	11.6	12.3	1
2	-2.7	-1.7	-0.8	-1.2	-1.9	-3.8	-3.5	-2.0	2.4	8.6	7.1	5.8	2
3	-0.3	-2.1	-3.6	-4.0	3.7	-3.6	-3.4	-1.0	7.1	8.0	8.0	9.8	3
4	0.0	-0.7	-2.4	-1.5	-3.8	-1.6	-4.0	-2.1	1.3	3.9	7.6	9.2	4
5	5.4	6.4	9.0	8.6	8.9	1	6.8	6.3	9.3	10.6	10.8	10.3	5
6	-0.2	-1.7	-1.8	-1.9	-3.6	-3.6	-3.1	-2.1	1.7	8.1	9.1	9.2	6
7	-0.7	-2.7	-3.6	-4.0	-4.4	-4.5	-4.8	-0.8	1.8	6.0	10.0	9.8	7
8	-1.8	-2.8	-3.9	-1.4	-1.1	-4.0	-4.7	0.9	8	7.1	10.5	17.0	8
9	0.0	-0.8	-1.7	-2	5.6	-2.2	-6	0.8	7	4	5.6	10.1	9
10	5.9	7.3	4.0	1.6	5.7	3.4	4.5	6.0	8.3	9.1	8.5	10.2	10
11	1.0	0.6	0.4	0.4	0.4	0.4	0.4	0.8	1.5	2.1	3.2	6.7	11
12	-2.6	-3.1	-3.6	-3.9	-4.4	-4.4	-4.6	-4.2	3	-3.1	-3.1	-2.4	12
13	-6.0	-6.8	-7.5	-8.1	-8.3	-8.2	8.2	-8	-2	-5.1	-3	-4.6	13
14	-7.9	-7.7	-7.3	-7.1	-6.6	-6.5	6.4	-9	6	-4.7	-4.1	-3.2	14
15	-3.2	-3.0	-3.7	-4.2	-4.0	-1.8	-4.8	-3.7	-2.3	-1.6	-0.6	0.0	15
16	-5.6	-6.3	-5.9	-6.5	-4	-8.6	-8.3	4.4	-1.7	0.3	1.6	2.6	16
17	-4.6	-5.5	-5.6	-4	-4	-6.2	-5.1	-3.9	2.0	0.6	2.2	3.9	17
18	-0.8	-1.3	-2.2	-3.1	-3	-3.5	-2.8	-0.8	2.8	5.4	6.8	7.2	18
19	-0.9	-1.1	1.9	-2.7	4.3	-2.8	1.6	0.0	3.0	4.2	5.2	6.8	19
20	1.2	1.0	-1.2	-1.4	-2.6	-2.0	-2	0.0	1.8	3.6	5.5	7.0	20
21	2.3	-1.1	-2.1	-2.2	-2.5	-2.7	-3.0	1.1	3.4	5	6.7	6.9	21
22	0.4	2.8	1.6	1.4	1.4	1.1	0.4	2.8	4.3	3	4.2	7.2	22
23	-0.1	-2.7	-4.4	-4.5	-3.8	-3.2	-2.6	0.3	3.9	6.6	8.7	10.2	23
24	0.9	-0.2	-1.6	-2.6	1.8	2.1	1.4	4.4	8.4	10.0	11.3	12.6	24
25	3.0	2.2	1.6	0.9	0.8	-0.4	0.4	3.8	8.6	12.6	14.0	14.3	25
26	7.7	7.2	6.7	5.2	4.8	3.1	5.2	0	8.0	7.1	9	9.4	26
27	3.6	1.7	0.3	-1.6	-2.9	-3.8	0.1	3.4	5.9	7.4	8.8	9.4	27
28	-1.8	-1.9	-1.7	-2.3	-2.0	-3.2	0.2	1.1	1.6	2.9	4.0	4.8	28
29	-2.8	-2.2	-1	4	4.1	-1.8	2.0	2.9	4.8	5.5	5.5	5.0	29
30	-1.2	0.6	-1.0	2.3	-2.7	-2.4	0.3	3.3	5.6	7.2	8.4	9.8	30
31	0.4	-1.0	-0.5	-2.0	-2.6	-2.8	-0.8	3.6	6.6	10.4	12.5	15.6	31

日期 Days of the Month	13	14	15	16	17	18	19	20	21	22	23	子夜 Midn.	日期 Days of the Month
1	12.7	13.7	14.2	14.1	13.2	10.0	7.6	5.3	3.5	2.2	-0.1	-0.3	1
2	7.6	7.8	8.4	8.6	8.3	6.5	5.4	3.9	2.1	0.3	1.1	-1.1	2
3	11.3	12.8	13.6	14.0	17.1	10.0	8.5	6.3	6.3	6.1	4.9	3.2	3
4	10.8	12.0	13.0	13.6	12.9	10.6	9.0	4	4.1	5.6	4.9	3.4	4
5	10.8	8.2	9.0	8.5	7.8	6.9	4.4	3.4	1.9	1.9	1.2	0.2	5
6	9.6	10.0	10.4	10.3	10.0	8.4	7.0	6.0	3.1	1.8	1.5	0.6	6
7	10.4	11.5	11.9	12.2	11.6	10.5	8.9	1	1.5	2.5	0.2	-1.7	7
8	13.0	13.6	14.4	13.7	12.9	11.1	8.8	6.4	4.5	6.5	2.5	0.3	8
9	9.4	10.7	11.0	11.0	10.2	9.2	8.4	6.9	6.2	5.4	10.1	7.6	9
10	9.6	11.2	11.5	10.0	8.9	7.8	5.9	1.8	4.2	3.5	2.9	2.0	10
11	6.5	6.8	6	5	4.8	3.0	3.1	3.4	1.4	1.2	-1.1	-1.8	11
12	-2.0	-1.8	-1.6	-1.8	-1.5	-1.5	-1.9	2.2	-2.7	-3.1	-4.1	-5.1	12
13	-4.3	-3.6	-4.3	-3.4	-4.1	-1.8	-6	-6.2	6.6	-7.1	-1.5	-8	13
14	-2.8	-1.9	-1.5	-1.3	-1.1	-1.6	-3.1	4.8	4.2	-2.4	-2.1	3.2	14
15	0.0	0.2	0.1	-0.3	-1.7	-1.6	-2.4	3	3.2	5.7	-4.2	-4.6	15
16	3.9	4.4	5.2	5.6	5.4	4.1	2.3	3.4	4.1	-1.5	-2.3	-4.9	16
17	5.6	7.0	8.2	8.0	8	6.8	5.2	4.8	3.6	2.4	0.2	0.9	17
18	7.6	8.1	8	8.3	8.1	6.4	4.6	3.1	2.2	1.4	1.3	0.0	18
19	7.8	8.7	9.2	9.9	9.8	7.7	5.4	2.2	0.1	-0.8	1.5	1.9	19
20	8.1	9.6	10.5	10.6	10.1	8.9	6.0	4.5	3.1	2.7	3.1	2.8	20
21	8	7.7	8.1	8.1	9.0	8	5.6	4.4	5.0	3.9	2.1	1.7	21
22	8.3	8.9	10.2	10.4	10.3	9.2	7.3	4.3	4.4	3.1	3.7	1.8	22
23	10.7	12.0	12.5	12.3	12.4	11.0	9.1	7.2	6.6	8.3	3.2	2.4	23
24	13.5	15.2	16.5	15.4	14.5	13.3	11.1	9.7	10.9	10.6	9.2	7.0	24
25	15.6	16.4	16.8	17.0	16.3	14.8	13.8	12.5	10.9	9.5	9.1	10.2	25
26	9.7	10.7	10.8	10.6	10.1	9.1	7.4	6.2	5.6	4.8	4.3	3.1	26
27	9.3	9.1	8.1	7.2	5.3	6.0	4.3	3.1	2.2	1.5	-0.2	-0.3	27
28	6.5	6.4	6.8	6.7	6.1	5.4	3.2	1.9	0.1	-0.6	-1.6	-2.9	28
29	7.4	8.8	8.6	9.1	9.4	8.7	5.9	4.6	2.9	3.7	2.0	-0.7	29
30	10.4	11.8	12.4	12.0	12.0	11.1	8.3	7.0	6.3	4.9	4.6	2.9	30
31	16.5	18.4	19.5	20.5	20.2	19.4	17.6	15.0	13.1	1.8	10.1	7.6	31

中華民國二十一年一月逐日各小時絕對濕度 (mm)

Absolute Humidity at every Hour of Day, in the Month of January, 1932. (mm)

日 期 Days of the Month	時間 Hours, Peiping Standard Time.											中午 Noon	日 期 Days of the Month
	1	2	3	4	5	6	7	8	9	10	11		
1	1.69	1.73	1.71	1.66	1.63	1.57	1.44	1.46	1.63	1.77	1.94	2.06	1
2	1.75	1.67	1.79	1.70	1.62	1.63	1.59	1.63	1.72	1.87	2.15	2.21	2
3	2.22	2.06	2.04	1.89	1.86	1.91	1.82	1.77	2.22	2.26	2.37	2.72	3
4	3.36	3.24	3.19	3.00	3.00	1.68	2.93	2.58	2.99	3.59	3.28	4.03	4
5	3.39	3.28	3.05	2.96	2.97	2.89	2.87	2.95	2.91	3.36	3.78	3.66	5
6	1.06	1.03	1.00	0.92	0.85	0.82	0.80	0.80	0.92	0.98	1.01	1.03	6
7	0.78	0.83	0.84	0.84	0.84	0.78	1.00	0.84	0.99	1.02	1.04	1.03	7
8	1.04	1.00	1.08	1.16	1.08	1.10	1.11	1.18	1.30	1.36	1.38	1.44	8
9	1.47	1.68	1.73	1.82	1.84	1.57	1.64	1.60	1.51	1.86	1.64	1.90	9
10	1.85	1.3	1.78	1.83	1.76	1.8	1.73	1.62	1.94	1.96	2.15	1.96	10
11	2.05	1.90	1.96	2.21	2.26	2.32	1.46	1.36	1.72	1.76	1.79	1.85	11
12	1.61	1.62	1.63	1.64	1.60	1.53	1.51	1.52	1.50	1.55	1.55	1.62	12
13	2.09	2.10	1.95	1.91	1.8	1.71	1.89	1.80	2.03	2.22	1.95	1.85	13
14	1.92	1.82	1.95	1.8	1.59	1.0	1.77	1.89	2.19	2.41	2.36	2.34	14
15	2.18	1.9	2.24	2.17	2.02	2.12	2.00	1.89	1.5	1.66	1.68	1.76	15
16	2.40	2.46	2.41	2.53	2.16	2.46	2.09	2.03	2.08	2.20	2.11	1.79	16
17	1.84	1.68	1.0	1.71	1.0	1.61	1.63	1.66	1.81	2.07	2.00	2.10	17
18	1.66	1.82	1.49	1.7	1.84	1.84	1.64	1.60	1.7	2.02	1.92	1.87	18
19	1.88	1.65	1.62	1.61	1.88	1.81	1.45	1.48	1.53	1.77	1.89	1.96	19
20	1	1.69	1.6	1.89	1.89	1.89	1.92	1.99	2.0	2.30	2.35	2.38	20
21	2.64	2.60	1.96	1.68	1.63	1.48	1.30	1.36	1.60	1.52	1.50	1.41	21
22	1.98	2.01	1.95	1.85	1.74	1.0	1.6	1.89	1.99	2.10	2.21	1.64	22
23	2.14	2.17	1.91	2.0	1.92	1.96	1.77	2.08	2.12	2.05	2.02	2.03	23
24	2.24	2.02	2.00	2.08	2.11	2.20	2.26	2.32	2.50	2.08	2.04	2.12	24
25	2.35	2.16	2.28	2.2	1.81	1.75	1.69	1.55	2.71	2.49	2.32	2.42	25
26	2.14	2.05	1.84	1.94	1.95	1.69	1.7	1.9	2.20	2.19	2.28	2.11	26
27	1.86	1.49	1.56	1.31	1.84	1.39	1.35	1.47	1.59	1.81	1.95	2.01	27
28	1.64	1.39	1.63	1.53	1.49	1.89	1.63	1.89	1.31	2.06	2.24	2.28	28
29	1.85	2.00	2.03	1.81	1.89	2.01	2.05	2.19	2.39	2.27	2.65	2.57	29
30	2.53	2.51	2.51	2.51	2.61	2.65	2.58	2.69	2.57	2.74	2.89	2.92	30
31	2.60	2.57	2.31	2.31	2.18	2.21	2.24	2.25	2.54	2.4	2.71	2.74	31

日 期 Days of the Month	13	14	15	16	17	18	19	20	21	22	23	子夜 Midn	日 期 Days of the Month
1	2.12	2.18	2.23	2.07	2.09	2.05	1.99	2.04	1.96	1.90	1.94	1.86	1
2	1.92	2.25	2.47	2.34	2.77	2.43	2.55	2.86	2.60	2.52	2.45	2.37	2
3	2.54	2.82	2.5	2.55	2.87	3.32	3.51	3.72	3.35	3.41	3.33	3.29	3
4	3.88	3.58	3.85	3.49	3.2	3.51	3.45	3.27	3.69	3.52	3.44	3.30	4
5	3.50	3.76	3.28	3.2	3.03	3.40	3.65	4.28	2.02	1.56	1.15	1.20	5
6	1.05	1.01	0.97	0.90	0.88	0.84	0.77	0.75	0.4	0.74	0.76	0.77	6
7	1.04	1.04	1.08	1.05	1.08	1.11	1.09	1.10	1.10	1.07	1.06	1.04	7
8	1.45	1.80	1.62	1.48	1.41	1.47	1.57	1.67	1.67	1.62	1.60	1.33	8
9	1.83	1.74	1.6	1.4	1.88	1.83	1.85	2.04	2.11	2.21	2.02	2.04	9
10	2.11	2.16	2.11	2.05	1.90	2.19	2.43	2.58	2.46	2.26	2.13	1.96	10
11	1.87	1.97	1.83	1.74	1.70	1.63	1.60	1.68	1.65	1.63	1.66	1.65	11
12	1.62	1.69	1.7	1.74	1.81	1.4	1.73	1.87	1.88	1.76	1.74	1.86	12
13	1.84	1.72	1.74	1.68	1.65	1.60	1.83	1.95	2.31	2.05	1.99	2.06	13
14	2.42	2.42	2.44	2.35	2.44	2.00	2.06	2.50	2.62	2.64	2.80	2.30	14
15	1.61	1.54	1.47	1.52	1.74	2.33	2.47	2.44	2.53	2.55	2.63	2.46	15
16	1.76	1.83	2.04	2.05	2.08	2.19	2.25	2.39	2.45	2.46	2.34	1.98	16
17	2.26	2.28	2.34	2.25	2.24	2.27	2.53	2.34	2.23	2.19	1.87	1.63	17
18	1.84	1.80	1.82	1.68	1.83	1.84	1.74	1.71	1.81	2.23	1.66	1.67	18
19	2.02	2.10	1.94	1.92	1.82	1.90	2.28	2.29	2.09	1.95	1.92	1.80	19
20	2.53	2.58	2.66	2.46	2.62	2.46	2.83	3.05	2.91	3.07	2.91	2.80	20
21	1.45	1.37	1.37	1.32	1.25	1.24	1.22	1.23	1.28	1.59	1.89	1.80	21
22	1.71	1.76	1.75	1.76	1.76	1.81	1.73	1.82	1.90	1.85	1.79	2.10	22
23	2.05	2.01	1.97	1.97	1.91	1.87	1.89	1.91	1.93	2.05	2.12	2.23	23
24	2.10	2.08	1.97	1.88	1.78	1.75	2.10	2.22	2.11	2.45	2.35	2.36	24
25	2.33	2.27	2.38	2.26	2.17	2.36	2.36	2.51	2.68	2.31	2.17	2.28	25
26	2.16	2.14	2.06	2.04	2.03	2.01	2.01	1.68	1.67	1.74	1.58	1.66	26
27	1.90	2.05	2.04	1.98	1.90	1.74	1.78	1.82	2.30	1.98	1.69	1.70	27
28	2.43	2.46	2.42	2.43	2.37	2.17	2.11	2.08	2.01	1.91	1.93	1.88	28
29	2.42	2.56	2.60	2.80	2.81	2.66	3.13	2.59	2.55	2.43	2.49	2.50	29
30	3.06	3.26	2.83	2.69	2.66	2.60	2.71	2.66	2.65	2.57	2.59	2.63	30
31	2.80	2.82	2.85	2.87	2.93	3.16	3.42	3.24	3.11	3.06	3.20	3.20	31

**中華民國二十一年二月逐日各小時絕對濕度 (mm)**

**Absolute Humidity at every Hour of Day, in the Month of February, 1932. (mm)**

日 期 Days of the Month	時間 Hours, Peiping Standard Time.												日 期 Days of the Month
	1	2	3	4	5	6	7	8	9	10	11	中午 Noon	
1	3.20	3.23	3.23	3.23	3.21	3.18	3.19	3.20	3.16	3.32	3.28	3.40	1
2	1.58	1.44	1.51	1.45	1.43	1.52	1.54	1.58	1.76	1.87	1.87	2.05	2
3	1.54	1.55	1.51	1.46	1.50	1.39	1.45	1.45	1.45	1.62	1.67	1.67	3
4	1.47	1.46	1.36	1.34	1.31	1.35	1.29	1.30	1.39	1.37	1.38	1.38	4
5	1.27	1.29	1.24	1.23	1.15	1.12	1.10	1.23	1.30	1.40	1.41	1.47	5
6	1.88	1.85	1.62	1.54	1.62	1.77	1.61	1.78	1.51	1.46	1.41	1.46	6
7	1.43	1.45	1.42	1.44	1.35	1.36	1.35	1.37	1.22	1.74	1.75	1.83	7
8	1.74	1.62	1.91	1.81	2.07	2.31	2.47	2.35	2.54	2.63	2.59	2.47	8
9	1.70	1.70	1.74	1.77	1.76	1.66	1.65	1.83	1.92	1.94	1.87	2.01	9
10	1.78	1.68	1.56	1.68	1.89	1.54	1.54	1.66	1.91	1.78	1.89	1.82	10
11	1.87	1.56	1.49	1.46	1.55	1.58	1.54	1.61	1.85	1.87	1.93	2.13	11
12	1.82	1.71	1.63	1.61	1.57	1.47	1.35	1.34	1.73	1.75	1.74	1.79	12
13	1.70	1.83	1.60	1.66	1.76	1.80	1.80	2.01	2.02	2.00	1.96	2.07	13
14	1.83	1.67	1.73	1.61	1.77	1.53	1.58	1.52	1.76	1.85	1.92	1.98	14
15	1.20	1.26	1.20	1.19	1.15	1.03	1.01	1.17	1.34	1.42	1.53	1.58	15
16	0.83	0.87	0.85	0.90	0.85	0.82	0.82	0.88	1.23	1.03	1.09	1.14	16
17	0.86	0.84	0.89	0.87	0.86	0.84	0.84	0.86	1.03	1.10	1.16	1.21	17
18	0.89	0.93	0.86	0.87	0.87	0.83	0.90	0.93	1.12	1.26	1.24	1.34	18
19	1.22	1.14	1.29	1.27	1.31	1.25	1.43	1.60	1.48	1.40	1.41	1.36	19
20	1.23	1.15	1.07	1.05	1.09	1.06	1.06	1.13	1.19	1.34	1.38	1.38	20
21	1.78	1.88	1.75	1.67	1.76	1.66	1.58	1.70	2.35	2.79	2.82	2.84	21
22	1.78	1.81	1.69	1.60	1.71	1.59	1.52	1.90	2.00	2.07	2.18	2.08	22
23	1.57	1.72	1.76	1.85	1.92	1.89	1.83	1.91	1.94	1.50	1.32	1.34	23
24	1.12	1.07	1.02	1.01	1.00	1.44	1.70	1.19	1.37	1.46	1.46	1.43	24
25	1.13	1.11	1.06	1.02	1.07	1.24	1.25	1.35	1.40	1.50	1.48	1.50	25
26	1.31	1.26	1.23	1.22	1.27	1.95	1.63	1.47	1.51	1.34	1.28	1.28	26
27	1.17	1.19	1.14	1.18	1.18	1.21	1.22	1.40	1.49	1.58	1.65	1.64	27
28	1.50	1.47	1.50	1.61	1.46	1.42	1.40	1.43	1.74	1.92	2.01	1.90	28
29	1.93	2.00	2.03	2.22	2.25	2.30	2.28	2.39	2.35	2.46	2.76	2.80	29

日 期 Days of the Month	13	14	15	16	17	18	19	20	21	22	23	子夜 Midn	日 期 Days of the Month
1	3.53	3.41	3.38	3.52	3.51	3.02	2.43	3.12	1.94	1.91	1.69	1.58	1
2	2.07	2.0	1.95	1.91	1.87	1.85	1.80	1.76	1.76	1.72	1.55	1.55	2
3	1.72	1.72	1.68	1.73	1.68	1.58	1.69	1.93	2.07	2.10	1.91	1.66	3
4	1.37	1.38	1.35	1.36	1.33	1.24	1.30	1.48	1.57	1.43	1.45	1.27	4
5	1.48	1.45	1.46	1.43	1.38	1.31	1.35	1.75	1.81	1.74	1.76	1.65	5
6	1.45	1.40	1.38	1.40	1.38	1.21	1.30	1.68	1.69	1.72	1.96	1.90	6
7	1.91	2.01	1.88	1.81	1.78	1.53	1.56	1.74	2.23	1.7	1.76	1.71	7
8	2.26	2.13	2.06	2.02	1.92	1.90	1.88	2.01	1.99	2.00	1.85	1.61	8
9	1.92	1.93	1.90	1.93	1.86	1.84	1.90	1.90	1.83	1.81	1.85	2.05	9
10	1.81	1.76	1.67	1.70	1.64	1.62	1.62	1.71	1.61	1.73	1.81	1.73	10
11	2.12	2.23	2.29	2.22	2.23	2.16	2.26	2.30	2.36	2.37	2.24	2.28	11
12	1.82	1.79	1.86	1.86	1.86	1.66	1.72	1.65	1.75	1.64	2.07	1.77	12
13	2.10	2.02	1.95	1.93	1.84	1.77	1.70	1.76	1.74	1.66	1.79	2.25	13
14	2.04	2.16	2.07	2.03	1.75	1.63	1.53	1.46	1.39	1.27	1.15	1.24	14
15	1.78	1.84	1.65	1.54	1.38	1.22	1.11	1.01	0.96	0.94	0.89	0.84	15
16	1.19	1.24	1.27	1.26	1.28	1.15	1.12	1.03	0.97	0.90	0.89	0.86	16
17	1.27	1.26	1.27	1.26	1.20	1.10	1.01	1.07	1.03	1.00	0.96	1.04	17
18	1.35	1.48	1.44	1.44	1.40	1.23	1.29	1.29	1.43	1.36	1.23	1.35	18
19	1.38	1.32	1.37	1.43	1.44	1.41	1.27	1.33	1.20	1.20	1.32	1.27	19
20	1.42	1.54	1.68	1.68	1.57	1.35	1.29	1.44	1.46	1.73	1.83	1.88	20
21	2.97	2.79	2.68	2.58	2.52	2.45	2.60	2.37	2.52	2.32	2.13	1.87	21
22	2.25	2.17	2.01	2.11	2.02	2.28	2.24	2.16	2.20	2.08	1.99	1.92	22
23	1.25	1.22	1.25	1.24	1.17	1.10	1.20	1.18	1.17	1.20	1.26	1.22	23
24	1.42	1.43	1.45	1.41	1.37	1.20	1.15	1.18	1.20	1.18	1.17	1.17	24
25	1.53	1.56	1.54	1.47	1.44	1.34	1.40	1.31	1.29	1.26	1.29	1.58	25
26	1.31	1.33	1.36	1.33	1.35	1.30	1.31	1.33	1.29	1.29	1.24	1.19	26
27	1.67	1.85	1.92	2.05	2.08	2.05	1.87	1.65	1.60	1.49	1.48	1.45	27
28	2.02	2.07	1.87	1.97	1.98	1.98	2.08	1.84	1.76	1.83	1.84	1.65	28
29	2.99	3.12	3.20	3.10	3.16	2.76	2.68	2.57	2.50	2.73	2.85	2.79	29

中華民國二十一年二月逐日各小時絕對濕度 (mm)

Absolute Humidity at every Hour of Day, in the Month of March, 1932. (mm)

日期 Days of the Month	時間 Hours, Peiping Standard Time.												日期 Days of the Month
	1	2	3	4	5	6	7	8	9	10	11	中午 Noon	
1	2.75	2.53	2.66	2.79	2.62	2.58	2.49	2.77	2.83	3.16	3.00	2.87	1
2	2.33	2.63	2.80	2.84	2.71	2.56	2.66	2.81	3.15	3.19	3.38	3.10	2
3	2.55	2.53	2.46	2.21	2.26	2.30	2.39	3.08	3.11	3.27	3.60	3.61	3
4	2.06	2.32	2.30	2.31	2.18	1.96	2.34	2.45	2.61	2.71	2.96	2.99	4
5	2.61	2.80	3.12	3.00	3.18	2.76	2.61	2.63	3.31	3.42	3.37	3.12	5
6	3.11	2.85	2.81	2.91	2.60	2.81	3.00	3.04	3.15	3.28	2.78	2.12	6
7	1.45	1.71	1.79	1.60	1.39	1.51	1.61	2.09	2.38	2.54	2.79	2.53	7
8	2.29	2.79	2.66	2.78	2.78	2.52	2.68	3.63	2.76	2.44	2.69	2.66	8
9	3.20	3.02	3.01	3.14	3.07	2.82	3.09	3.34	2.90	3.05	3.25	3.50	9
10	3.18	3.51	3.04	3.23	3.24	3.00	3.27	3.49	3.83	3.79	4.05	4.17	10
11	4.12	4.06	4.04	4.11	4.18	4.18	4.21	4.28	4.40	4.46	4.22	2.67	11
12	1.08	1.01	1.05	1.03	1.09	1.13	1.13	1.18	1.24	1.26	1.26	1.33	12
13	1.20	1.15	1.07	0.99	0.98	0.99	1.00	1.03	1.04	1.11	1.16	1.22	13
14	0.99	1.02	1.06	1.13	1.13	1.16	1.18	1.24	1.24	1.25	1.23	1.29	14
15	1.34	1.36	1.31	1.28	1.31	1.25	1.28	1.43	1.51	1.49	1.55	1.60	15
16	1.31	1.33	1.39	1.41	1.36	1.39	1.59	2.07	1.86	1.89	1.92	1.93	16
17	1.73	1.66	1.71	1.74	1.81	1.73	1.76	2.04	1.98	2.15	2.21	2.44	17
18	2.80	3.31	3.35	3.31	3.32	3.31	2.98	2.80	2.93	2.74	2.58	2.61	18
19	1.54	1.82	1.61	1.52	1.67	1.88	1.85	2.06	2.00	2.00	2.15	2.28	19
20	2.19	2.09	1.95	1.96	1.89	2.04	2.00	2.29	2.11	2.39	2.56	2.65	20
21	1.99	1.82	2.39	2.16	2.13	2.18	2.37	2.69	2.68	2.80	2.65	2.78	21
22	2.56	2.51	2.25	2.27	2.25	2.16	2.16	2.51	2.64	2.46	2.29	2.88	22
23	2.52	2.14	2.18	2.43	2.79	2.81	2.97	3.41	3.62	3.27	3.14	3.10	23
24	2.44	2.88	2.81	3.02	3.31	2.92	2.73	2.75	2.83	2.74	2.79	2.93	24
25	2.12	2.43	2.72	2.82	2.88	2.84	3.08	3.74	3.49	4.34	4.40	4.06	25
26	3.05	2.80	2.78	2.94	2.89	2.57	2.77	2.99	5.27	5.19	4.76	4.39	26
27	2.15	1.91	1.84	1.83	1.89	2.08	2.65	2.71	2.49	2.65	2.70	2.72	27
28	1.82	2.05	1.98	1.81	1.86	1.67	2.04	1.95	1.95	2.11	2.31	2.50	28
29	2.53	2.66	2.22	2.21	2.28	2.15	2.21	2.70	2.50	2.47	2.46	2.56	29
30	2.68	2.39	2.15	1.93	2.21	2.02	2.34	2.60	2.64	2.65	2.67	2.75	30
31	2.61	2.85	2.82	2.51	2.40	2.45	2.80	3.25	3.27	3.38	3.60	4.02	31

日期 Days of the Month	13	14	15	16	17	18	19	20	21	22	23	子夜 Midn.	日期 Days of the Month
1	2.84	2.92	2.77	2.51	2.37	2.29	2.33	2.96	2.46	2.52	2.41	2.30	1
2	3.38	3.19	3.00	2.91	2.81	2.64	2.64	2.56	2.42	2.85	2.83	3.21	2
3	3.74	3.74	3.53	3.39	3.28	2.83	2.73	2.70	2.46	2.49	2.29	2.10	3
4	2.99	2.97	2.91	3.01	2.88	2.62	2.57	2.57	2.23	2.44	2.52	2.25	4
5	3.18	2.67	2.82	2.65	2.48	2.26	2.15	2.10	2.41	2.46	2.32	2.84	5
6	2.05	1.97	1.93	1.82	1.74	1.64	1.61	1.57	1.45	1.43	1.71	1.67	6
7	2.54	2.57	2.59	2.54	2.44	2.32	2.21	2.10	2.06	2.18	1.86	2.17	7
8	2.73	2.78	2.87	2.74	2.66	2.46	2.28	2.29	2.92	2.96	2.18	2.99	8
9	3.91	3.88	3.86	3.86	3.70	3.68	3.61	3.75	3.71	3.51	3.90	3.66	9
10	4.32	4.46	4.54	4.20	4.16	4.57	4.39	4.43	4.34	4.28	4.36	4.27	10
11	1.99	1.77	1.65	1.54	1.51	1.55	1.48	1.44	1.39	1.28	1.19	1.12	11
12	1.36	1.38	1.38	1.42	1.46	1.50	1.59	1.73	1.69	1.55	1.35	1.29	12
13	1.25	1.30	1.31	1.28	1.22	1.17	1.10	1.07	1.05	1.02	1.01	1.00	13
14	1.38	1.35	1.33	1.33	1.37	1.32	1.24	1.16	1.16	1.54	1.37	1.34	14
15	1.60	1.60	1.58	1.52	1.48	1.43	1.38	1.41	1.38	1.38	1.34	1.34	15
16	1.99	2.00	2.08	2.10	2.04	1.89	1.78	1.67	1.73	1.87	1.95	1.89	16
17	2.51	2.62	2.80	2.60	2.56	2.47	2.38	2.38	2.39	2.20	2.20	2.46	17
18	2.61	2.58	2.36	2.36	2.38	2.08	1.84	1.69	1.66	1.67	1.76	1.60	18
19	2.40	2.51	2.42	2.41	2.21	2.00	1.87	1.90	2.37	2.78	2.92	2.33	19
20	2.70	2.85	2.84	2.71	2.53	2.46	2.37	2.23	2.08	2.52	2.27	2.06	20
21	2.92	2.78	2.82	2.83	2.91	2.76	2.71	2.75	2.80	2.67	2.55	2.54	21
22	2.97	2.97	3.10	3.05	2.94	2.68	2.48	2.54	3.09	2.85	2.91	2.50	22
23	3.02	3.13	3.23	3.14	3.21	2.98	2.76	2.54	2.50	2.85	2.41	2.41	23
24	2.99	3.40	3.70	3.38	3.13	2.95	2.75	2.82	3.10	3.00	2.77	2.54	24
25	4.28	4.16	4.05	3.82	3.65	3.57	3.69	3.13	2.86	2.96	3.34	3.57	25
26	3.81	3.69	3.66	3.57	3.36	3.19	3.03	2.83	2.64	2.41	2.23	2.17	26
27	2.75	2.88	2.86	2.76	2.79	2.75	2.20	2.05	1.98	1.88	1.71	1.79	27
28	2.78	2.72	2.80	2.74	2.60	2.51	2.27	2.22	2.12	2.12	2.08	2.13	28
29	2.57	2.74	2.66	2.71	2.72	2.64	2.35	2.25	2.08	2.29	2.11	2.41	29
30	2.68	2.73	2.78	2.71	2.71	2.60	2.32	2.43	2.49	2.26	2.34	2.25	30
31	4.19	4.64	4.88	5.10	4.83	4.60	4.34	4.18	3.89	3.70	3.82	3.81	31

中華民國二十一年一月逐日各小時相對濕度(%)

Relative Humidity at every Hour of Day, in the Month of January, 1932. (%)

日 期 Days of the Month	時間 Hours, Peiping Standard Time.											日 期 Days of the Month	
	1	2	3	4	5	6	7	8	9	10	11		中午 Noon
1	85.0	88.0	90.0	91.0	91.0	92.0	92.0	91	90	44.5	42.5	2.5	1
2	80.0	85.0	85.0	83.0	80.0	82.0	85.0	85	90	49.0	45.0	34.0	2
3	52.0	31.0	31.5	32.5	32.0	33.0	35.0	32.5	39.0	36.0	34.0	39.0	3
4	94.5	95.0	93.5	92.0	91.5	92.0	92.0	92.5	98.0	44.0	41.0	45.0	4
5	91.5	86.0	85.5	83.0	91.0	93.0	95.0	95.0	80.0	70.0	62.0	52.5	5
6	31.0	32.0	32.0	31.0	31.0	30.0	30.0	31.0	35.0	35.0	34.5	34.0	6
7	36.0	36.5	36.0	36.0	36.0	38.0	40.0	37.0	36.0	34.0	33.0	31.0	7
8	33.0	34.0	34.0	34.0	35.5	36.5	38.0	40.5	38.0	36.0	35.0	33.0	8
9	66.0	78.0	80.5	83.0	85.0	87.0	87.0	80.0	60.0	45.0	40.0	36.0	9
10	65.0	69.0	71.0	71.0	70.0	69.0	81.0	81.0	70	58.0	45.0	40.0	10
11	65.0	72.0	67.0	66.0	69.0	68.0	79.0	28.0	35.0	35.0	33.0	35.0	11
12	43.0	44.0	45.0	45.0	43.5	43.0	44.0	43.0	38.0	38.0	35.0	36.5	12
13	70.0	58.0	69.0	76.0	80.0	73.0	81.0	81.0	62.0	50.0	35.0	30.0	13
14	70.0	58.0	33.0	30.0	31.0	33.0	35.0	38.0	41.0	40.0	38.0	35.5	14
15	68.0	69.0	65.0	62.5	61.0	57.0	55.0	53.0	45.0	38.0	35.5	35.0	15
16	20	7.0	7.5	8.0	8.6	9.0	9.7	9.5	9.0	68.0	55.0	47.0	16
17	0.5	6.0	7.0	7.0	7.0	6.0	8.0	8.0	9.0	66.0	40	49.0	17
18	43	40.0	43.0	42.0	49.0	49.0	53.5	58.5	49.0	44.0	37.5	34.0	18
19	63.0	0.0	68.0	66.0	68.0	68.5	66.0	69.5	61.0	60.5	56.0	53.0	19
20	70.0	68.0	66.0	66.5	65.5	68.0	69.5	72.0	69.0	64.0	56.0	49.5	20
21	83.5	88.0	47.0	35.5	36.0	33.0	35.5	35.5	37.0	34.0	29.5	27.5	21
22	84.0	84.0	6.0	16.0	79.0	80.0	87.0	90.0	58.0	47.5	39.0	28.0	22
23	30	30	71.5	79.0	80	78.0	60	60	50	40.0	34.0	32.0	23
24	9.0	2.0	16.0	13.0	88.0	9.0	91.0	91.0	30	43.0	35.0	31.0	24
25	79.0	0.5	1.0	45.0	38.0	38	38.0	34	41.0	38.5	35.0	30.5	25
26	35.0	35.0	36.0	36.0	37.0	36	39.0	44.5	42.0	36.0	34	32.0	26
27	38	40.0	40.0	41.5	44.5	45.0	48.0	51.0	45.0	41.0	38.0	35.0	27
28	51.5	62.0	65.0	65.5	65	60	10	0.0	60.0	56.0	52.0	46.5	28
29	49.0	45.0	45.5	45.0	48.5	49.0	50.0	49.0	57.0	44.0	37.0	33.0	29
30	63.0	6.0	65.5	65.0	67.0	67.0	65.0	58.0	60.0	59.0	57.0	7.0	30
31	84.0	90.0	89.0	90.0	85.0	88.0	85.0	85.0	50	10	66.0	65.0	31

日 期 Days of the Month	13	14	15	16	17	18	19	20	21	22	23	子夜 Midn.	日 期 Days of the Month
1	42.0	9.0	40.0	55.0	57.0	56.5	63.0	69.5	70	60	80.0	40	1
2	27.5	35.5	43.0	44.0	46.0	57.0	55.0	46	34	34.0	35.5	64.0	2
3	36.5	43.0	40.0	47.0	50.0	63.0	10	6.0	80.0	8.0	82.0	91.0	3
4	40.0	41.0	45.0	50.0	58.0	62.0	65.5	60	87.5	90.5	93.0	92.0	4
5	47.0	47.0	40.0	44.0	41.0	61.0	69.0	70.0	31.0	79.0	79.0	30.5	5
6	33.5	33.0	33.0	3	44.0	34	34.5	34.5	34	33.0	3	36.0	6
7	30.0	29.0	29.0	29.0	30.0	31.0	31.0	32.0	32.5	32.0	32	32.5	7
8	34.0	34.0	34.0	35.5	38.0	40.0	46.0	48.0	47.0	46.0	46.0	57.5	8
9	31.0	28.0	27.0	28.0	31.0	39.0	45	52.5	61.0	60	69.0	30	9
10	38.0	36.0	33.0	33.0	40.0	51.5	74.0	80.0	0	65.0	67	67.0	10
11	35.0	35.5	35.0	35.0	35.5	35.5	35.0	40.0	40.5	41.0	47.0	43.0	11
12	35.0	35.0	35.0	35.0	36.5	38.0	39.0	41.0	49.0	60.0	64.0	69.5	12
13	27.0	24.5	25.0	26.0	29.0	33.0	45.0	53.5	63.0	62.0	68.5	45	13
14	36.5	35.0	35.0	35.0	37.5	42.0	70	15	81.0	86.0	92.0	90	14
15	32.0	29.0	29.0	31.0	38.0	59.0	64.0	68.0	30	70	6	70	15
16	37.0	30.0	40.0	42.0	48.0	55	65.0	70	80.0	86.0	89.0	0	16
17	45.0	42.0	42.0	47.0	45.0	55.0	64.0	67.0	61.5	60.5	50	43.0	17
18	32.0	30.0	29.0	28.0	36.0	36	44.0	48.0	57.5	9.0	63.0	57.0	18
19	50.0	46.0	43.0	42.0	43.5	53.0	0	8.0	50	25	70	0.0	19
20	47.0	48.5	50.0	47.0	52	59	0.5	6.5	81.0	83.0	50.0	62.0	20
21	26.5	25.0	25.0	25.0	26.0	28.0	30.0	33.0	40.0	52.5	64.0	2	21
22	25.0	25.0	25.0	26.5	30.0	34.0	36.5	40.0	40.0	45.0	10	6.0	22
23	29.0	28.0	28.0	30.0	31.5	34.0	35.0	39.0	45	55.5	60.0	0.0	23
24	27.0	25.0	26.0	27.0	28	33.0	41.0	45.0	49.0	63.0	65.0	72.0	24
25	28.0	28.0	29.0	29.0	32	40.0	42.0	42.5	38	35	70.0	70	25
26	32.0	31.5	31.0	32.0	33.0	34.5	35.0	35.0	35	36.5	35.0	38.0	26
27	33.5	33.5	34.0	34.0	34.5	36.0	37.0	40	66	65.0	50	60.0	27
28	45.0	42.0	41.0	40.5	42.0	43.0	43.0	41.5	45.0	47.0	47.5	45.5	28
29	30.0	29.0	30.0	30.0	40.0	47.0	58.0	52.5	45	55	55.0	61.0	29
30	56.0	56.0	48.0	46.5	49.0	51.5	56.0	60.0	65.0	70.0	70.0	60	30
31	65.0	65.0	67.0	68.0	70.0	80.5	96.0	93.0	92.0	92.0	92.0	92.0	31

中華民國二十一年二月逐日各小時相對濕度(%)

Relative Humidity at every Hour of Day, in the Month of February, 1932. (%)

日期 Days of the Month	時間 Hours, Peiping Standard Time.											期 日 Days of the Month	
	1	2	3	4	5	6	7	8	9	10	11 中午 Noon		
1	92.0	92.0	92.0	92.0	91.5	90.5	90.0	90.0	85.0	86.5	83.0	80.0	1
2	45.0	41.5	42.0	42.0	42.0	45.0	45.0	43.5	45.0	43.0	42.0	43.0	2
3	43.0	43.5	44.0	45.5	46.0	48.0	51.0	51.0	45.0	44.0	39.0	37.0	3
4	47.5	47.0	45.0	46.0	48.0	49.5	48.0	46.0	42.0	38.5	35.0	32.0	4
5	45.0	45.0	45.0	46.0	47.0	48.0	50.0	46.5	43.0	39.0	35.5	33.0	5
6	86.0	89.0	79.0	75.0	83.5	91.0	90.5	87.0	50.0	38.0	32.5	29.5	6
7	59.5	64.0	66.0	68.0	66.0	67.5	72.0	75.5	68.0	49.0	40.5	37.0	7
8	64.5	69.0	81.0	72.0	75.0	82.0	89.5	92.0	75.0	71.0	60.0	54.0	8
9	52.0	58.0	59.0	60.0	59.0	56.5	57.0	62.0	57.0	53.0	49.0	45.0	9
10	61.0	63.0	66.0	76.5	80.0	70.0	72.5	80.0	67.0	48.0	42.0	37.5	10
11	72.0	64.5	67.0	70.0	72.0	74.5	75.0	76.0	68.0	60.5	55.0	50.0	11
12	44.0	44.5	46.5	47.0	46.0	45.0	45.0	41.5	44.0	42.0	40.0	38.5	12
13	58.0	59.5	57.0	65.5	77.0	82.0	85.5	85.0	55.0	45.0	38.0	34.5	13
14	62.5	62.0	61.0	60.0	69.0	63.0	70.0	69.0	57.0	43.0	39.0	37.0	14
15	36.5	38.0	37.0	39.0	39.0	39.0	42.0	44.5	44.0	41.0	39.0	37.0	15
16	36.5	38.0	39.0	40.0	39.0	38.5	39.0	40.0	49.0	37.0	35.5	34.0	16
17	36.0	36.5	37.5	37.5	38.0	38.5	39.5	40.0	38.0	36.5	35.0	34.5	17
18	46.0	48.0	46.0	49.0	49.5	50.0	55.0	54.0	48.0	45.0	40.0	40.0	18
19	50.0	50.0	53.0	56.0	56.0	49.5	50.0	48.0	44.0	41.0	38.0	35.0	19
20	49.0	50.0	50.0	50.5	55.5	54.0	52.0	53.5	47.0	42.0	37.5	35.0	20
21	63.5	63.0	65.0	66.0	70.0	70.5	71.0	72.0	65.0	61.0	57.0	53.0	21
22	43.0	44.5	44.5	45.0	46.5	46.0	48.0	53.0	43.0	45.5	42.5	40.0	22
23	50.5	66.5	74.0	81.0	90.0	91.5	88.0	81.0	57.0	39.0	31.5	28.0	23
24	30.0	30.0	30.0	30.0	32.5	49.0	57.5	39.5	41.0	38.5	35.0	33.5	24
25	41.5	43.0	45.0	47.0	50.0	61.5	57.0	54.5	45.5	42.0	40.0	37.5	25
26	40.0	40.0	40.0	40.5	42.0	68.5	59.0	51.0	51.0	43.0	40.0	39.5	26
27	45.5	45.5	46.0	47.0	47.0	47.5	47.5	46.5	45.5	43.5	42.0	41.0	27
28	50.0	51.0	50.0	50.0	49.5	50.0	50.0	47.5	45.0	40.5	36.5	34.0	28
29	57.0	57.5	67.5	80.5	85.0	82.0	79.0	66.0	43.0	38.0	35.0	32.5	29

日期 Days of the Month	13	14	15	16	17	18	19	20	21	22	23	子夜 Midn	日期 Days of the Month
1	79.0	82.0	83.0	88.5	87.5	90.0	91.0	87.0	46.0	49.5	45.0	42.0	1
2	40.5	41.0	37.0	37.0	38.0	39.5	40.5	43.0	43.0	42.5	42.5	42.5	2
3	35.0	33.5	34.0	36.5	37.5	40.5	50.0	61.5	71.0	78.5	75.0	51.0	3
4	30.0	28.5	27.0	27.5	28.5	32.0	37.0	46.0	52.0	49.5	46.5	43.0	4
5	31.5	30.0	28.0	28.0	28.5	32.0	38.5	57.0	61.5	65.0	71.0	72.0	5
6	26.0	24.0	23.0	23.0	25.0	27.0	35.0	50.0	53.0	60.0	75.0	78.0	6
7	34.5	32.5	31.0	30.5	30.5	35.0	42.5	55.0	75.0	57.5	68.5	66.0	7
8	45.0	42.5	40.0	40.0	42.0	47.0	54.0	62.5	62.0	60.5	54.0	47.5	8
9	43.0	40.0	39.0	38.5	40.5	43.5	48.0	52.0	50.5	53.0	58.0	72.0	9
10	45.0	32.0	31.0	32.5	33.0	37.5	41.0	47.0	46.5	52.0	59.0	65.0	10
11	45.0	45.5	45.0	45.0	46.0	46.0	48.0	50.0	50.5	51.0	53.5	56.0	11
12	37.0	35.0	35.0	35.0	36.0	36.0	40.0	44.5	46.5	59.0	65.0	57.0	12
13	32.0	31.0	30.0	29.5	31.0	34.5	39.0	41.5	41.0	43.5	57.0	70.0	13
14	32.5	28.5	27.0	28.0	28.5	28.5	30.0	30.0	30.0	30.0	31.5	35.0	14
15	35.0	33.5	30.0	30.5	30.0	32.0	32.5	32.5	33.5	35.0	35.0	36.0	15
16	33.0	33.0	33.0	32.0	32.5	34.0	35.0	35.0	35.0	35.5	36.0	36.0	16
17	33.0	32.0	31.0	30.0	29.0	31.0	33.5	38.0	39.0	42.5	45.5	46.0	17
18	39.0	36.5	35.0	34.5	35.0	35.5	45.5	48.0	51.0	48.0	44.0	50.0	18
19	33.0	31.5	30.0	31.0	32.0	33.5	36.0	38.0	38.0	43.0	47.0	52.0	19
20	32.0	31.0	29.0	28.0	27.5	30.0	32.0	36.5	42.0	53.0	60.5	63.0	20
21	49.0	44.5	42.0	40.0	41.0	43.5	51.0	54.5	48.5	45.0	44.0	41.0	21
22	39.0	35.0	31.0	32.0	37.0	47.5	50.0	52.0	56.5	60.0	61.0	61.0	22
23	25.0	24.0	24.0	23.5	23.5	24.0	27.0	27.5	28.0	30.0	35.0	31.0	23
24	37.0	34.0	29.5	28.5	28.5	30.0	33.0	38.0	37.5	37.0	38.0	40.0	24
25	35.0	33.0	32.0	32.0	33.0	33.5	37.0	35.0	35.0	35.5	39.0	47.0	25
26	39.0	38.5	38.5	38.0	39.0	40.0	42.0	44.0	44.5	44.5	45.0	45.0	26
27	41.0	41.0	41.0	44.5	46.5	46.5	46.0	46.0	45.0	45.0	48.0	49.0	27
28	32.5	32.0	30.0	30.0	31.0	34.0	36.0	37.5	41.5	42.5	44.5	46.0	28
29	31.0	29.5	28.0	28.0	29.5	32.5	40.0	44.0	8.0	69.0	75.5	77.0	29

中華民國二十一年三月逐日各小時相對濕度(%)

Relative Humidity at every Hour of Day, in the Month of March, 1932. (%)

日期 Days of the Month	時間 Hours, Peiping Standard Time.											日期 Days of the Month	
	1	2	3	4	5	6	7	8	9	10	11		中午 Noon
1	76.0	70.0	78.0	87.0	8.5	78.0	77.5	66.0	46.0	38.0	29.5	27.0	1
2	62.0	65.0	6.0	68.0	68.0	74.0	7.0	1.0	60.0	47.0	45.0	45.0	2
3	57.0	64.5	70.0	65.5	65.0	65.5	67.0	72.5	58.5	49.5	45.0	40.0	3
4	45.0	53.5	60.0	65.5	63.0	60.0	68.5	62.5	52.0	45.0	38.0	34.5	4
5	39.0	39.0	36.5	36.0	37.5	36.0	35.5	3.0	38.0	36.0	35.0	33.5	5
6	69.0	70.5	70.0	4.5	74.0	80.0	87.5	7.5	61.0	50.0	32.5	24.5	6
7	33.5	45.5	51.0	47.0	42.0	46.0	50.0	48.5	40.0	36.5	30.5	28.0	7
8	57.0	75.0	77.5	84.0	86.0	74.0	87.0	74.5	41.0	32.5	28.5	25.5	8
9	70.0	70.0	74.5	75.0	75.5	78.0	76.0	69.0	52.5	48.5	48.0	46.5	9
10	46.0	46.0	50.0	51.0	47.5	51.5	52.0	50.0	47.0	44.0	49.0	45.0	10
11	84.0	85.0	86.0	88.0	89.0	89.0	89.5	88.5	85.5	84.0	73.5	38.0	11
12	28.5	29.5	30.0	31.5	33.0	34.0	34.5	35.0	3.0	34.5	34.5	34.5	12
13	41.0	41.5	41.0	39.5	40.0	40.0	40.5	40.5	37.0	38.0	37.5	37.5	13
14	39.0	39.5	40.0	40.5	40.5	41.0	41.5	42.0	41.0	38.0	36.5	35.5	14
15	37.0	37.0	37.5	38.0	38.5	39.0	40.0	39.5	37.0	36.5	35.5	35.0	15
16	43.5	46.5	47.0	50.0	51.5	58.0	64.5	67.5	45.0	40.5	37.5	35.0	16
17	53.0	54.5	56.5	56.5	59.0	60.0	60.5	59.5	57.0	45.0	42.5	40.5	17
18	65.0	79.5	86.0	91.0	97.3	93.5	80.0	6.0	52.5	41.0	35.0	34.5	18
19	36.0	39.5	40.5	40.5	50.0	50.5	45.5	42.5	37.0	34.0	32.5	31.0	19
20	44.0	42.5	46.5	47.5	50.0	55.0	57.5	50.0	47.5	40.5	38.0	35.5	20
21	37.0	45.0	61.0	55.5	56.0	58.0	64.5	54.5	45.0	41.5	37.5	37.5	21
22	54.5	45.0	44.0	45.0	44.5	45.0	46.0	45.0	42.5	41.5	39.5	38.0	22
23	55.5	57.0	66.0	74.0	80.5	77.5	78.5	73.0	60.0	45.0	37.5	33.5	23
24	50.0	64.0	69.0	80.0	82.5	55.0	54.0	44.0	34.5	30.0	28.0	27.0	24
25	37.5	45.5	55.0	58.0	59.5	64.0	65.5	62.5	42.0	40.0	37.0	33.5	25
26	39.0	37.0	38.0	44.5	45.0	45.0	42.0	40.0	66.0	69.0	60.0	50.0	26
27	36.5	37.0	39.5	45.0	51.0	60.0	57.5	46.5	36.0	34.5	32.0	31.0	27
28	45.5	51.5	49.0	47.0	47.0	46.0	44.0	39.5	38.0	37.5	38.0	39.0	28
29	68.0	68.5	61.0	68.5	67.5	67.0	56.0	53.0	41.5	38.5	35.5	34.5	29
30	64.0	50.0	50.5	50.0	59.0	52.5	50.0	45.0	39.0	35.0	32.5	30.5	30
31	55.5	67.0	64.0	62.5	63.5	66.0	65.0	5.0	45.0	36.0	32.5	30.5	31

日期 Days of the Month	13	14	15	16	17	18	19	20	21	22	23	子夜 Midn.	日期 Days of the Month
1	26.0	25.0	23.0	21.0	21.0	25.0	30.0	44.5	42.0	47.0	53.0	51.5	1
2	43.5	40.5	50.5	35.0	34.5	36.5	39.5	42.5	45.5	6.0	67.0	76.0	2
3	37.5	34.0	30.5	28.5	30.0	31.0	33.0	34.5	34.5	35.5	35.5	36.5	3
4	31.0	28.5	27.0	26.0	26.0	27.5	30.0	33.5	35.0	36.0	39.0	36.0	4
5	33.0	33.0	33.0	32.0	31.5	30.5	34.5	36.0	46.0	47.0	46.5	63.0	5
6	23.0	21.5	20.5	19.5	19.2	20.0	21.5	22.5	15.5	27.5	34.0	35.0	6
7	27.0	25.5	25.0	24.0	24.0	24.5	26.0	32.0	40.5	40.0	40.0	50.0	7
8	24.5	24.0	23.5	23.5	24.0	25.0	27.0	32.0	16.5	41.0	40.0	64.0	8
9	44.5	40.5	39.5	37.5	40.0	42.5	44.0	50.5	52.5	52.5	41.5	47.0	9
10	48.5	45.0	45.0	46.0	49.0	57.5	63.5	69.0	70.5	73.0	7.5	81.0	10
11	27.5	24.0	22.5	21.5	23.5	25.5	26.0	26.5	27.5	27.5	27.5	28.0	11
12	34.5	34.5	34.0	35.5	35.5	36.5	40.0	44.5	45.0	42.5	40.0	41.0	12
13	37.5	37.0	36.5	35.0	36.0	36.5	36.5	7.0	37.5	38.0	38.5	39.0	13
14	34.5	34.0	32.5	32.0	32.5	32.5	34.0	36.0	40.0	40.0	36.5	37.0	14
15	35.0	34.5	34.5	34.0	34.0	35.0	36.0	37.5	38.0	39.5	40.0	41.0	15
16	33.0	32.0	31.5	31.0	30.5	31.0	33.0	35.5	39.0	45.5	50.5	55.0	16
17	37.0	35.0	34.5	32.5	32.5	33.5	36.0	3.0	40.5	40.5	41.5	50.5	17
18	33.5	32.0	30.0	29.0	29.5	29.0	29.0	29.0	31.0	33.0	35.0	35.0	18
19	30.5	30.0	28.0	26.5	24.5	25.5	28.0	35.5	51.5	64.5	57.0	44.5	19
20	33.5	32.0	30.0	28.5	27.5	29.0	34.0	35.5	36.5	45.5	38.5	37.0	20
21	37.0	35.5	35.0	34.5	34.0	35.0	40.0	44.0	43.0	47.5	47.0	51.0	21
22	36.5	35.0	34.5	32.5	31.5	31.0	32.5	41.0	49.5	49.0	40.0	48.0	22
23	31.5	30.0	30.0	29.5	30.0	30.5	32.0	33.5	34.5	35.0	40.0	39.5	23
24	26.0	26.5	26.5	26.0	25.5	26.0	28.0	31.5	32.0	31.5	32.0	34.0	24
25	32.5	30.0	28.5	26.5	26.5	28.5	31.5	29.0	29.5	33.5	38.0	38.5	25
26	42.5	38.5	38.0	37.5	36.5	37.0	39.5	40.0	39.0	37.5	36.0	35.5	26
27	31.5	33.5	35.5	36.5	42.0	39.5	35.5	36.0	37.0	37.0	35.0	40.0	27
28	38.5	38.0	38.0	37.5	37.0	37.5	39.5	42.5	46.0	48.5	51.0	57.5	28
29	33.5	32.5	32.0	31.5	31.0	31.5	34.0	35.5	37.0	38.5	40.0	55.5	29
30	28.5	26.5	26.0	26.0	26.0	26.5	28.5	32.5	35.0	35.0	37.0	40.0	30
31	30.0	29.5	29.0	28.5	27.5	27.5	29.0	32.0	32.5	41.0	41.0	49.0	31



中華民國二十一年一月逐日各小時風向

Wind direction at every Hour of Day, in the Month of January, 1932.

日期 Days of the Month	時間 Hours, Peiping Standard Time											日期 Days of the Month	
	1	2	3	4	5	6	7	8	9	10	11		中午 Noon
1	NW	NNW	NNW	N	WSW	WSW	N	NW	NNW	NNW	NNW	NNW	1
2	SSW	SSW	V	NNW	W	V	NNE	SSW	SSE	SSW	V	V	2
3	WNW	WNW	WNW	WNW	WNW	WNW	NW	NW	NW	ESE	V	S	3
4	V	SSW	SSE	SSE	S	NNW	NNW	WNW	NNW	NNW	NNE	SSW	4
5	NNW	N	N	NNW	NNW	NNE	NE	NE	N	NNW	NNE	E	5
6	NNW	NNW	NNW	NNW	NNW	N	N	N	N	NW	NW	NW	6
7	WNW	NW	WNW	W	W	SSW	SW	WNW	WNW	W	WNW	WNW	7
8	NW	NW	WNW	WNW	NW	NW	WNW	WNW	WNW	WNW	WNW	WNW	8
9	ENE	E	ENE	ENE	ENE	ENE	NNE	N	N	NNE	ENE	ENE	9
10	NNE	N	NNW	NNW	NNW	N	N	NNW	N	N	NE	NE	10
11	N	N	NNW	NNW	NNW	N	NW	NW	NW	WNW	WNW	WNW	11
12	WNW	WNW	WNW	WNW	WNW	WNW	WNW	NW	NW	WNW	NW	WNW	12
13	WNW	NW	NNW	NW	S	SSE	SSW	ESE	SE	ENE	ENE	S	13
14	N	N	NNW	NNW	NNW	NNW	NNW	NNW	N	NNW	NNW	N	14
15	NNW	N	N	N	N	NNE	NNE	NNE	NNE	NNE	NNE	NE	15
16	E	N	N	NNE	NNW	NW	C	C	C	C	C	NNE	16
17	NNW	NNW	N	NNW	NNW	NNW	N	NNE	NNW	NNW	N	NNE	17
18	NW	NNW	NNW	V	N	N	NNE	NNE	NNE	NNW	NNW	NNW	18
19	N	NNW	NNW	N	N	N	NNE	NE	NE	NNW	NNW	NNW	19
20	NNW	NNW	N	N	NNE	NNE	N	N	N	N	NNE	NE	20
21	NNE	N	N	NNW	NNW	NNW	NNW	N	N	NNW	NNW	NNW	21
22	NW	WSW	SW	SW	NW	N	NNW	NNW	NW	W	W	SSW	22
23	NW	WNW	NE	NW	N	NW	NNW	N	NNW	NNE	V	SW	23
24	NNW	N	N	W	W	NNE	NE	NE	NE	NNE	NNE	N	24
25	W	N	NNE	N	N	N	NW	N	NW	NNW	NW	WSW	25
26	WNW	WNW	WNW	WNW	WNW	NW	NNW	NW	NW	NW	NW	NW	26
27	NNW	N	NNE	N	N	NE	NE	N	N	NE	ENE	SSE	27
28	N	N	N	N	NNE	N	N	N	N	NNE	NNE	NE	28
29	NNW	NNW	NNW	N	N	NNE	NNE	NNE	NNE	NNE	NE	NE	29
30	SSW	SSW	E	E	E	E	E	C	C	C	C	C	30
31	SSW	NW	N	N	NNW	NNW	NNW	NNE	NNE	C	C	C	31

日期 Days of the Month	子夜 Midn											日期 Days of the Month	
	13	14	15	16	17	18	19	20	21	22	23		
1	NNW	WNW	S	SSW	SSW	SSW	SSW	SSW	SSW	SSW	SSW	SSW	1
2	SSW	SSW	SSW	SSW	SSW	SSW	SSW	NW	NW	NW	NW	NW	2
3	S	S	S	S	S	SSW	SSW	V	N	NNW	NW	NW	3
4	SSW	SSW	SSW	SSW	S	S	SSW	SSW	S	NNE	NE	ENE	4
5	E	N	SSE	SSE	SSW	SSW	SSW	NW	NW	NW	NW	NNW	5
6	WNW	WNW	WNW	WNW	WNW	WNW	WNW	NW	NW	NW	NW	NW	6
7	WNW	WNW	WNW	W	WNW	WNW	WNW	WNW	NW	NW	NW	NW	7
8	WNW	WNW	WNW	S	S	S	SSW	SSW	SSW	SSW	SSW	V	8
9	SSE	SSW	SSW	S	S	S	SSW	S	SSW	SSW	N	N	9
10	ENE	ESE	ESE	ESE	S	S	S	N	N	N	NW	N	10
11	WNW	WNW	WNW	WNW	WNW	WNW	WNW	WNW	WNW	WNW	WNW	WNW	11
12	NW	NW	NW	NW	NW	NW	NW	NNW	NE	SSE	SSE	V	12
13	SSW	SSW	S	SSW	SSW	SSW	SSW	SSW	SSW	SW	V	V	13
14	N	N	N	NNE	ENE	ENE	NE	SW	SSW	E	NE	NW	14
15	NE	NE	ESE	ESE	ESE	ESE	SSE	S	S	S	SE	ESE	15
16	WSW	SW	S	S	SSE	S	S	SSW	S	SSW	SW	NNW	16
17	ENE	ESE	S	S	S	S	SW	NW	NW	NNW	NW	NW	17
18	NNW	NNW	NNW	SW	SSW	ESE	SE	SE	SSE	S	NW	NW	18
19	N	NE	V	C	C	C	C	C	N	NNW	NW	NNW	19
20	NE	E	SE	ESE	NE	NE	ESE	SE	SSW	SSW	NNE	N	20
21	NNW	NNW	NNW	NNW	N	NW	WNW	NW	NW	SSE	SSE	WNW	21
22	SSW	SSW	SSW	SSW	SSW	SSW	SSW	SSW	SSW	SW	V	NNW	22
23	SSW	SSW	SSW	SSW	SSW	SSW	SSW	SSW	SW	SSW	SSW	SSW	23
24	N	SSE	SSW	SSW	S	S	S	SSW	SSW	SSW	SSW	NNW	24
25	WNW	WNW	NW	SSW	SSW	SSW	SSW	SSW	WNW	WNW	WNW	WNW	25
26	NW	NW	NW	NW	WNW	WNW	WNW	NNW	NW	NW	NNW	NNW	26
27	S	S	S	S	S	S	SW	SW	W	NNW	NNW	NNW	27
28	NE	NE	NNE	NE	NE	NNW	NW	NW	NW	NW	NW	NW	28
29	NE	NE	ESE	SSE	S	S	S	S	S	S	SSW	SSW	29
30	SW	SSW	S	SSE	S	SSE	SSE	S	S	S	S	S	30
31	C	C	C	C	C	NE	N	N	C	C	C	C	31

中華民國二十一年二月逐日各小時風向

Wind Velocity at every Hour of Day, in the Month of February, 1932.

日期 Days of the Month	時間 Hours, Peiping Standard Time.											中午 Noon	日期 Days of the Month
	1	2	3	4	5	6	7	8	9	10	11		
1	C	NNW	N	N	N	NW	NNW	NW	NW	NW	SSE	ENE	1
2	NNW	NNW	NW	NNW	NNW	NNW	NNW	NNW	NNW	NW	NW	NNW	2
3	N	N	N	N	N	NNE	NNE	NNE	NNE	NNE	NNE	N	3
4	N	N	N	N	N	N	N	N	N	NNW	NNW	NNW	4
5	NW	N	N	N	NNW	NNW	NNW	N	N	N	N	N	5
6	NNW	NW	NNW	N	N	N	N	N	N	NNE	N	N	6
7	NNW	NNW	NNW	N	N	NNE	NNE	SW	NNW	N	N	NNE	7
8	E	N	NNW	NW	NW	NW	NW	NW	NW	NW	NNW	W	8
9	NNW	NNW	W	W	ENE	NE	E	E	N	N	NW	WNW	9
10	NNW	NNW	NW	NW	NNW	N	N	N	N	NE	ESE	SSE	10
11	N	NNE	NNW	NNW	NNW	NNW	NNW	NNW	N	N	N	N	11
12	NNW	NNW	NNW	NNE	NNE	N	NW	NW	NW	NW	NW	NW	12
13	NNW	NNW	NNW	N	N	NE	ENE	SSW	SSW	SW	SW	S	13
14	NNW	N	N	N	NNE	NNE	NNW	N	N	NNE	NNE	N	14
15	N	N	N	N	N	NNE	NNE	NE	NE	NE	NNE	N	15
16	N	N	NNW	N	N	NNW	NNW	N	N	NNW	NW	NW	16
17	N	N	N	N	N	N	N	N	NNW	NNW	NNW	NNW	17
18	N	N	NNE	NNE	N	N	NNE	NE	NNE	NE	NE	NE	18
19	N	N	N	N	NNW	NW	NNW	NNW	NNW	NNW	NNW	NNW	19
20	SSE	SSW	NW	NW	N	N	N	N	NNE	N	NE	NE	20
21	NNW	NNW	NNW	NNW	NW	NW	WNW	NW	NNW	NW	N	N	21
22	N	N	NNE	NE	NNE	NNE	N	NNW	ENE	ENE	NNE	NNE	22
23	ENE	ENE	ENE	N	NW	N	NNW	NNW	NNW	NNE	NNE	NNE	23
24	NE	NE	NE	NE	ENE	ENE	ENE	NE	NNE	NNE	NNE	N	24
25	N	N	N	NNE	NE	NNE	NNE	NE	NE	NE	NNE	N	25
26	ENE	ENE	NE	NE	NNE	NNE	NNE	N	NNW	WNW	WNW	WNW	26
27	NW	NW	NW	NW	NW	NW	NW	NW	NW	WNW	WNW	WNW	27
28	NNW	N	NNW	NNW	NNW	N	N	NNE	NNE	WSW	NW	NW	28
29	NW	NNW	WNW	NW	NNW	SSW	SSW	S	S	W	SSW	SSW	29

日期 Days of the Month	13	14	15	16	17	18	19	20	21	22	23	子夜 Midn	日期 Days of the Month
1	ENE	ENE	N	N	N	N	N	W	NW	NW	NW	NNW	1
2	NNW	NNW	NNW	NNW	NNW	NNW	NNW	NNW	NNW	NNW	N	N	2
3	N	N	N	NE	NE	NE	ENE	NE	NNW	N	NNW	NNW	3
4	NNW	N	N	N	N	N	N	N	NNE	NNE	NNW	NNW	4
5	N	N	N	NNE	E	E	ESE	SSW	SW	SW	NW	NW	5
6	V	V	SSW	SSW	SSW	S	SSW	SSW	SSW	SSW	NNW	NW	6
7	NNE	ESE	SSE	SSE	SSE	S	S	SSW	SW	ESE	ESE	NNW	7
8	SSW	S	SSW	SSW	SSW	SSW	SSW	S	S	ESE	ESE	ESE	8
9	V	V	NW	SW	SSW	SSW	SSW	SSW	SSW	S	SSW	NW	9
10	SSE	S	SSE	SSE	SSE	SSE	SE	SSE	S	S	SSE	SSE	10
11	NE	V	WSW	WNW	WNW	NW	NW	NW	NW	NW	NW	NNW	11
12	NW	NW	WNW	WNW	WNW	WNW	NW	NNW	N	V	NNW	N	12
13	SSW	V	V	SSW	SSW	SSW	SSW	SSW	SSW	SSW	WNW	WNW	13
14	N	V	NW	NW	WNW	WNW	NW	NW	NW	NW	NW	N	14
15	NW	SSW	WNW	WNW	WNW	NNW	N	N	N	N	N	N	15
16	NW	NW	NW	NW	NW	N	N	N	N	N	N	N	16
17	NNW	NNW	NNW	NW	NW	SSW	SSE	SSE	SSE	SSE	NNW	NW	17
18	NE	V	WSW	WSW	WSW	S	S	N	N	NNW	NNE	NE	18
19	NNW	NW	NW	NW	NW	NW	NW	ENE	NE	ESE	ESE	NE	19
20	NNW	NW	S	SSW	S	NW	NW	ESE	ESE	ESE	NNE	NNE	20
21	NNE	NE	NE	NE	NE	NE	N	NNW	NNW	NNW	NNW	NNW	21
22	V	V	SW	SSW	SSW	SSW	S	S	S	NW	NNW	NNE	22
23	NNE	V	NNE	SSE	SSE	SSE	SSW	SSW	SSW	SSW	NNW	NE	23
24	N	N	NNW	NW	WNW	N	N	NNW	NNW	NNW	N	N	24
25	NNE	V	V	SSW	SSW	S	SE	ESE	ESE	ESE	ESE	NNE	25
26	WNW	WNW	WNW	WNW	WNW	WNW	WNW	WNW	NW	NW	NW	NW	26
27	WNW	WNW	WNW	WNW	WNW	WNW	WNW	NW	NNW	NNW	NNW	NNW	27
28	NW	WNW	WNW	WNW	WNW	WNW	WNW	WNW	NNW	NNW	NW	NW	28
29	SSW	SSW	SSW	WNW	WNW	WNW	SW	SW	SW	NNE	NNW	NW	29

中華民國二十一年三月逐日各小時風向

Wind Velocity at every Hour of Day, in the Month of March, 1932.

日期 Days of the Month	時間 Hours, Peiping Standard Time.												日期 Days of the Month
	1	2	3	4	5	6	7	8	9	10	11	中午 Noon	
1	NW	NNE	NNE	NE	NNE	N	N	N	NSW	NW	NNW	NNW	1
2	N	NNW	NNW	NNW	NNW	NW	NW	WNW	SW	SE	E	E	2
3	S	SSW	S	NNW	NNW	NNW	NNW	NNE	SSE	S	SSW	SSW	3
4	S	SSW	SSW	NNW	NNW	NNW	NNW	N	NNW	NNW	N	N	4
5	N	NNW	NNW	NNW	N	NNW	NNE	NE	NE	NE	NE	NE	5
6	SSW	SSW	WNW	WNW	N	N	N	N	NNW	N	NNW	NNW	6
7	S	S	NW	NNW	NNW	NSW	NNW	NNW	NNE	NNE	NNW	NNW	7
8	N	NNE	V	N	NNW	SW	WSW	W	ENE	NNW	NE	SSE	8
9	E	ESE	NW	NW	W	NW	NW	NW	NW	NW	N	N	9
10	NNW	NNW	NNW	NNW	NW	NNW	NNW	NNW	N	NNW	NE	E	10
11	E	ENE	ENE	ENE	NNW	NNW	NW	NNW	NNE	SSE	SSE	NW	11
12	WNW	NW	NW	NW	NW	NW	NW	NW	NW	WNW	WNW	WNW	12
13	NW	NW	NW	NW	NW	NW	NW	NW	NW	NW	NW	NW	13
14	NW	NW	NW	NW	NW	NW	NW	NW	NW	NW	NW	NW	14
15	NW	NW	NW	NW	NW	NW	NW	NW	WNW	WNW	WNW	WNW	15
16	NW	NW	NW	N	N	N	V	V	SSE	SW	SW	SW	16
17	NNE	NE	NNE	NNE	NNE	NNE	NNE	NE	NE	NE	ENE	ENE	17
18	SE	C	C	C	C	WNW	N	ENE	NNE	ENE	ENE	ENE	18
19	NNE	NNE	NNE	N	N	N	NNE	N	N	NNW	NNW	NNW	19
20	N	N	ENE	ENE	ENE	ENE	ENE	ENE	ENE	FNE	ENE	NNE	20
21	N	NE	ENE	E	E	ENE	ENE	NE	ENE	E	SE	SSE	21
22	N	N	N	N	N	N	N	N	N	N	N	N	22
23	WSW	ENE	NNE	NNE	NNE	N	N	NNE	N	N	N	N	23
24	NNE	NE	C	N	N	N	NNW	NNW	NNW	N	N	NE	24
25	ESE	NE	N	NNE	N	NNE	NE	ESE	ESE	E	NW	NW	25
26	ESE	E	E	NNE	NE	NE	ENE	NNE	N	N	N	N	26
27	NNE	NNE	NNE	NNW	NW	NNW	NNE	NNE	N	NW	NNW	NNW	27
28	NNE	NNW	NNW	N	N	NNW	NNW	NNW	NNW	NNW	NNW	NNW	28
29	NNE	N	N	NNE	NNW	N	N	N	N	NNW	N	N	29
30	N	N	N	N	N	N	N	NNW	NNW	N	N	NW	30
31	W	C	NNE	NNE	NNE	NNE	NNE	NNE	NE	E	SW	SW	31

日期 Days of the Month	子夜 Midn												日期 Days of the Month
	13	14	15	16	17	18	19	20	21	22	23		
1	NNW	NNW	WNW	WNW	NW	SSW	SSW	SW	SSW	SSW	SW	ENE	1
2	NE	NE	E	E	ENE	NNE	V	NNW	NNE	E	SSE	SSW	2
3	SSW	S	S	SSW	SSW	S	S	S	S	S	S	S	3
4	NNW	W	WNW	NW	NW	NW	WNW	NW	NW	NW	N	N	4
5	NE	NE	NE	NE	NE	NE	NNE	N	N	SSW	SSW	S	5
6	NW	NW	NNW	NNW	NNW	WNW	WNW	WNW	NNW	SSE	SSW	SSW	6
7	NNW	NW	WNW	WNW	WNW	WNW	WNW	W	SW	NNE	NNE	NNW	7
8	S	S	S	SSE	SSE	SSE	SSE	S	SSW	SE	E	E	8
9	NNW	V	S	S	S	S	S	SW	WNW	N	WNW	NNW	9
10	SE	SSE	SSE	SSE	SSE	SSE	SSE	S	S	S	SE	ESE	10
11	NW	NW	WNW	WNW	WNW	WNW	WNW	WNW	WNW	WNW	WNW	WNW	11
12	WNW	WNW	WNW	WNW	WNW	WNW	WNW	NW	NW	NW	NW	NW	12
13	NW	NW	NW	NW	NW	NW	NW	NW	NW	NW	NW	NW	13
14	NW	NW	NW	NW	NW	NNW	N	NE	E	NW	NW	NW	14
15	WNW	WNW	WNW	WNW	WNW	NW	NW	NW	NW	NW	NW	NW	15
16	SSW	SSW	SW	SW	SW	SW	S	SSW	SW	WSW	W	NNE	16
17	ENE	ENE	ENE	ENE	NNE	N	N	SE	SSE	S	S	ESE	17
18	N	N	N	NNW	NNW	NNE	NNE	NNE	NNE	NNE	NNE	NNE	18
19	NNW	NNW	NNW	NNW	NNW	SE	ESE	ESE	NNE	NNE	NNE	N	19
20	NNE	NNE	NNW	NNW	NNW	NE	NNE	NNE	NNE	NNW	N	N	20
21	SSW	SSW	S	S	S	SSW	N	N	N	N	NNE	NE	21
22	N	NNW	N	N	N	ESE	SE	SSE	WSW	W	W	WSW	22
23	NNW	NNW	WSW	WSW	WSW	WSW	SW	SW	WSW	W	NNW	N	23
24	NE	V	NW	NNW	SW	SSW	SW	SW	SW	SW	SSW	S	24
25	NNW	NNW	NNW	NNW	NNW	N	N	SE	SSE	SSW	WSW	WSW	25
26	N	NNE	NNE	NNE	NNE	NNE	NNE	NNE	NNE	NNE	NNE	NNE	26
27	NNW	NNW	NNW	NNW	NNW	NNW	NNW	NNW	N	N	N	N	27
28	NNW	NNW	NNW	NNW	N	N	NNE	NNE	NE	ENE	NNE	C	28
29	NNW	NNW	NNW	NNW	NNW	NW	N	N	N	N	N	NNW	29
30	NW	V	SW	SW	WSW	SW	SW	WSW	SW	SW	SW	SW	30
31	SW	SW	SW	SW	SW	SW	SW	WSW	WSW	NW	N	NNE	31

中華民國二十一年一月逐日各小時風速 (Km/hr)

Wind Velocity at every Hour of Day, in the Month of January, 1932 (Km/hr)

日 期	Days of the Month	時間 Hours, Peiping Standard Time.										中午 Noon	日 期	Days of the Month	
		1	2	3	4	5	6	7	8	9	10				11
1		40	20	17	17	15	17	17	170	155	305	290	280	1	
2		155	85	40	75	60	95	100	145	150	145	35	25	2	
3		810	760	690	610	600	500	570	705	775	280	70	210	3	
4		40	50	60	105	30	160	405	205	250	120	40	90	4	
5		140	180	165	155	80	15	95	60	150	160	0	20	5	
6		840	630	600	650	560	660	560	500	600	560	560	530	6	
7		675	665	475	343	275	140	205	465	375	305	400	365	7	
8		670	405	405	470	480	370	350	225	235	340	470	480	8	
9		45	65	90	140	95	35	35	95	120	120	80	50	9	
10		150	125	160	215	190	55	70	30	50	50	50	70	10	
11		105	110	235	230	150	160	500	455	365	320	315	415	11	
12		520	450	470	220	440	370	575	370	520	630	545	510	12	
13		60	180	105	75	45	125	45	30	50	90	140	80	13	
14		45	205	270	480	400	520	600	530	480	430	580	470	14	
15		145	160	180	165	170	250	220	200	190	210	185	105	15	
16		68	10	10	10	10	11	08	08	08	08	08	14	16	
17		125	140	170	160	195	355	110	45	35	65	125	50	17	
18		340	390	325	45	200	220	110	70	140	160	235	165	18	
19		90	70	175	190	185	700	150	160	90	80	175	125	19	
20		175	155	215	205	175	140	110	140	100	70	80	80	20	
21		110	150	365	285	380	430	470	425	465	430	470	590	21	
22		75	145	145	90	20	20	80	115	75	65	30	35	22	
23		50	55	60	40	40	55	65	110	170	81	16	16	23	
24		40	130	80	20	20	20	20	40	35	30	60	50	24	
25		30	90	140	240	290	365	205	90	80	150	160	190	25	
26		455	445	325	400	370	350	205	95	60	110	280	400	26	
27		390	380	320	165	145	155	110	90	110	120	110	85	27	
28		195	150	205	180	200	170	195	220	185	155	170	195	28	
29		180	205	225	185	10	145	180	155	145	110	100	90	29	
30		110	50	50	95	135	60	21	00	00	00	00	00	30	
31		60	15	15	20	120	140	135	70	23	08	05	07	31	

日 期	Days of the Month	13	14	15	16	17	18	19	20	21	22	23	子夜 Midn	日 期	Days of the Month
1		340	210	120	160	180	200	160	210	200	180	200	180	1	
2		60	145	160	170	245	280	245	360	610	495	845	815	2	
3		315	390	435	400	300	275	185	0	110	100	110	70	3	
4		85	135	265	200	155	260	270	225	80	25	75	115	4	
5		25	20	20	75	80	175	175	160	670	1020	925	1025	5	
6		630	660	810	880	40	550	680	750	610	515	510	565	6	
7		430	420	330	230	240	300	360	380	120	500	570	680	7	
8		510	370	310	270	260	280	225	25	325	300	255	65	8	
9		25	25	140	170	190	230	220	230	130	83	57	70	9	
10		45	45	40	25	11	11	11	11	81	130	145	125	10	
11		470	585	600	35	745	720	630	650	650	510	670	590	11	
12		470	530	595	500	540	400	340	235	70	60	95	45	12	
13		135	125	215	250	270	190	150	110	140	100	2	25	13	
14		470	420	450	330	210	100	30	25	25	25	40	165	14	
15		145	100	80	85	115	155	215	185	175	125	40	95	15	
16		28	54	100	110	170	205	185	105	105	45	25	90	16	
17		25	25	70	130	225	225	160	160	260	190	230	350	17	
18		170	220	100	115	145	135	145	160	90	30	80	160	18	
19		60	35	25	08	08	03	03	03	25	115	165	160	19	
20		50	50	35	30	35	70	165	65	70	70	35	30	20	
21		590	490	480	365	285	220	160	160	75	40	20	20	21	
22		60	125	170	210	215	220	240	290	285	230	60	50	22	
23		16	86	120	145	185	235	210	215	110	120	155	90	23	
24		35	80	175	155	170	190	225	215	160	140	75	35	24	
25		290	350	340	160	210	160	280	350	225	425	290	245	25	
26		470	440	470	415	275	245	245	280	300	370	380	350	26	
27		200	250	310	350	360	275	135	55	120	65	170	230	27	
28		160	170	180	125	115	190	210	250	240	220	190	150	28	
29		170	90	100	160	200	185	185	255	275	255	205	155	29	
30		50	76	215	230	195	185	200	170	110	135	155	180	30	
31		05	05	05	05	05	17	125	68	09	09	07	07	31	

中華民國二十一年二月逐日各小時風速 (Km/hr)

Wind Velocity at every Hour of Day, in the Month of February, 1932. (Km/hr)

日期 Days of the Month	時間 Hours, Peiping Standard Time.											日期 Days of the Month	
	1	2	3	4	5	6	7	8	9	10	11		中午 Noon
1	09	57	25	20	50	405	50	65	120	15	15	15	1
2	400	440	400	540	620	620	590	480	460	520	580	465	2
3	435	415	410	395	370	320	315	280	315	320	360	480	3
4	400	440	400	450	390	400	365	445	470	375	375	420	4
5	225	255	370	290	90	185	155	250	310	320	335	300	5
6	125	120	150	135	110	90	85	130	55	35	80	85	6
7	175	145	175	160	180	90	30	20	30	70	80	90	7
8	135	175	120	165	155	165	180	145	80	100	40	35	8
9	40	20	20	15	15	10	15	15	15	15	15	15	9
10	115	75	40	30	90	140	130	55	20	20	35	110	10
11	60	95	60	125	170	190	185	190	170	160	140	130	11
12	370	415	295	105	155	100	130	275	475	490	520	530	12
13	155	165	160	115	140	90	25	25	130	50	40	45	13
14	145	170	125	130	120	120	95	110	145	125	125	150	14
15	425	385	400	420	420	310	240	135	195	290	215	125	15
16	330	350	355	410	475	475	435	340	465	525	495	520	16
17	405	370	40	420	380	350	400	195	55	340	400	450	17
18	185	185	150	150	150	115	130	145	60	150	180	110	18
19	115	175	180	225	225	310	370	360	430	69	745	700	19
20	195	120	85	120	110	135	185	190	130	130	65	35	20
21	135	195	165	170	160	170	120	115	95	185	100	85	21
22	345	325	235	225	210	150	85	35	25	90	65	110	22
23	210	90	30	15	15	60	155	185	65	110	125	60	23
24	355	285	335	320	265	145	110	200	150	240	220	310	24
25	305	260	150	55	85	70	160	110	155	220	130	50	25
26	130	195	315	255	250	205	165	280	475	495	600	650	26
27	280	320	340	300	300	410	320	300	160	540	500	580	27
28	300	270	310	330	325	295	300	210	35	50	265	350	28
29	70	135	45	50	100	125	175	175	20	20	40	150	29

日期 Days of the Month	13	14	15	16	17	18	19	20	21	22	23	子夜 Midn	日期 Days of the Month
1	20	35	0	80	15	15	15	155	120	380	345	365	1
2	575	520	540	555	485	500	455	380	115	440	470	515	2
3	390	355	280	225	255	195	30	20	25	55	135	290	3
4	500	450	380	360	310	225	75	40	145	125	240	330	4
5	295	290	230	170	140	155	95	35	80	115	120	140	5
6	40	25	25	20	120	160	160	140	180	150	40	100	6
7	85	50	50	55	40	70	180	45	25	90	90	100	7
8	65	135	160	165	170	110	130	100	150	170	255	225	8
9	15	30	2	30	50	80	110	75	120	165	125	55	9
10	150	160	15	215	225	190	190	205	165	115	125	65	10
11	110	60	0	150	115	175	185	200	205	155	170	230	11
12	540	495	515	550	540	365	220	175	155	60	75	175	12
13	40	30	35	50	105	185	200	240	255	215	110	90	13
14	100	35	35	465	560	630	530	525	45	525	530	440	14
15	95	170	40	670	620	515	455	545	140	385	435	360	15
16	460	400	435	415	420	270	330	360	440	315	305	355	16
17	380	350	270	195	135	190	105	105	150	100	50	130	17
18	70	40	40	40	45	60	15	15	15	110	50	30	18
19	595	545	600	780	620	380	90	75	125	110	60	120	19
20	30	75	145	200	230	150	135	105	55	30	45	140	20
21	45	75	90	80	135	125	150	185	145	350	265	345	21
22	70	45	75	180	185	260	445	210	120	80	105	195	22
23	55	50	20	20	55	85	150	145	155	125	40	295	23
24	235	315	300	310	250	265	185	160	190	205	305	330	24
25	55	55	50	80	135	110	95	165	195	155	25	25	25
26	610	610	605	615	570	560	430	455	420	425	375	355	26
27	530	520	560	540	440	510	450	325	325	360	310	330	27
28	315	375	350	385	400	415	330	405	230	340	255	135	28
29	145	125	100	115	190	130	145	185	105	35	175	175	29

中華民國二十一年三月逐日各小時風速 (Km/hr)

Wind Velocity at every Hour of Day, in the Month of March, 1932. (Km/hr)

日 期 Days of the Month	時間 Hours, Peiping Standard Time.											中 午 Noon	日 期 Days of the Month
	1	2	3	4	5	6	7	8	9	10	11		
1	15.0	12.5	10.0	6.0	9.0	15.5	12.5	12.0	7.5	5.5	27.5	28.0	1
2	12.5	10.0	15.0	16.5	16.0	-1.0	18.0	8.5	2.0	5.0	9.0	4	2
3	19.8	13.0	5.2	9.7	17.7	21.4	4.4	1.2	1.1	1.4	1.2	4.0	3
4	14.0	11.4	6.6	2.0	7.1	18.2	13.2	1.1	1.8	15.5	12.2	6.4	4
5	21.0	28.5	39.5	52.5	49.5	49.5	32.5	33.0	3.4	22.5	45.0	48.0	5
6	20.0	21.0	4.5	4.8	2.5	2.5	5.0	15.5	1.0	8.2	19.5	37.0	6
7	19.5	8.0	3.2	11.2	16.5	18.0	43.5	11.0	8.4	4.6	7.5	40.5	7
8	10.5	4.5	3.7	6.8	17.2	7.2	6.4	2.2	1.4	5.0	6.2	8.2	8
9	7.8	2.4	11.5	17.3	5.5	8.5	19.0	2.3	16.5	14.3	10.9	6.3	9
10	32.0	27.2	32.0	30.0	5.8	2.4	3.0	3.7	7.8	37.5	27.5	26.0	10
11	12.0	13.5	13.2	4.6	4.1	0	6.6	7.9	3	10.9	8.4	26.6	11
12	61.0	59.5	55.5	62.0	50.0	49.5	44.5	56.5	4.5	47.0	54.5	56.0	12
13	60.5	62.5	63.5	65.1	52.0	51.0	54.0	72.0	6.0	16.5	4.5	85.5	13
14	63.5	54.0	52.0	55.0	50.5	61.5	56.5	49	5.0	57.0	59.0	60.5	14
15	28.5	38.0	44.0	41.5	37.5	37.0	29.5	41.5	51.5	53.5	56.0	64.0	15
16	34.5	23.0	29.0	25.1	24.0	1.4	1.3	1.3	2.6	6.2	7.4	7.8	16
17	8.2	8.3	11.3	5.4	11.0	12.2	7.4	16.5	1.9	18.1	20.3	15.7	17
18	4.1	0.9	0.9	0.9	0.9	1.3	14.5	11.3	5.2	11.5	20.5	19.5	18
19	28.0	28.0	18.5	16.0	15.5	15.0	23.0	18	13.0	1.9	17.7	24.2	19
20	24.9	7.6	15.4	11.8	15.9	19.0	7.6	25.0	14.0	14.5	14.0	15.5	20
21	31.2	9.2	3.6	10.4	11.8	11.6	9.1	14.6	19.1	16.2	8.6	14.1	21
22	17.0	39.7	37.0	39.9	39.5	34.3	41.6	45.2	43	41.6	32.3	30.7	22
23	10.0	12.5	13.0	11.5	13.0	18.0	16.3	13.4	4.9	12.8	12.8	20.0	23
24	6.3	4.3	0.0	1.1	13.9	18.5	12.3	12.7	19.0	24.5	15.5	9.8	24
25	21.5	14.5	13.1	24.4	21.0	19.5	12.4	5.1	8.7	10.3	25.0	37.5	25
26	11.0	17.5	16.3	13.2	14.6	11.3	17.2	21.5	29.9	55.0	48.0	43.0	26
27	35.0	34.0	24.5	15.0	15.0	13.4	10.3	7.3	5.0	15.2	31.8	34.5	27
28	4.4	11.1	22.4	22.9	15	22.7	40.0	55.0	41.5	43.5	58.5	51.0	28
29	7.8	14.8	16.6	7.5	12.1	15.7	20.1	15.6	24.2	28.4	36.5	34.0	29
30	21.2	75.0	23.2	17.5	18.1	20.1	20.7	21.6	16.6	16	15.7	1.8	30
31	1.0	0.0	13.0	12.2	11.4	15.0	15.0	10.9	6.0	3.3	3.8	9.6	31

日 期 Days of the Month	13	14	15	16	17	18	19	20	21	22	23	子 夜 Midn.	日 期 Days of the Month
1	25.0	30.0	20.0	21.5	17.0	15.0	1.0	16.0	15	17.0	14.0	21.5	1
2	4.0	12.5	10.0	11.2	12.5	5	4.8	11.2	13.4	7.0	5.3	1.8	2
3	10.5	14.0	14.5	14.5	17.6	21.0	22.6	21	2.1	21.8	33.0	26.0	3
4	2.2	2.4	11.0	10.8	13.5	16.0	23.0	23.0	22.0	26	27.5	15.0	4
5	50.0	55.0	52.0	44.0	56.0	31.0	15.0	12.0	11.0	11.0	13.5	19	5
6	25.0	26.0	23.5	25.0	23.5	25.0	2.0	26	15.0	16.8	17.0	19.8	6
7	48.0	41.0	32.5	34.5	10.0	40.0	31.0	16.0	11	19	16.5	9.0	7
8	19.5	20.0	21.5	26.0	29.0	2.5	24.0	15.0	11.0	18.0	22.5	2.0	8
9	4.3	2.5	7.7	15.0	22.5	19.0	25.5	16.8	4.2	22.2	17.5	33.5	9
10	18.5	15.5	20.5	25.5	36.0	38.0	14.0	5.0	2.5	22.5	2.5	21.5	10
11	52.5	46.5	43.0	42.5	65.5	64.0	55.0	59.0	15	17.5	65.0	68.0	11
12	58.5	55	49.5	42.0	25.5	16.0	22.5	5	14.0	7	7	3.0	12
13	89.5	82.0	80.5	75.0	0	2.0	2.5	66.0	5	0.0	73.0	6.0	13
14	70.5	63.0	64.0	63.5	58.5	18.0	30.5	8	2	2.0	62.5	31.0	14
15	11.0	65.0	72.0	73.0	74.0	66.0	60.0	44.0	15.5	41	35	31.0	15
16	14.5	17.8	24.7	30.5	29.5	32.1	2.5	16	15.5	11.5	2	5	16
17	13.3	12.8	10.7	13.2	6.1	10.0	16.5	11.0	5.5	0	7.0	1.5	17
18	30.5	26.5	38.0	33.5	3.0	35	41.5	3.5	18.0	3.0	32.0	38.5	18
19	33.2	39.2	47.8	41.5	39.4	32.3	2.2	9.4	2.6	14.5	19.8	23.2	19
20	19.8	16.1	25.6	36.1	3.2	28.1	11	1.2	13.4	15.5	2	25.8	20
21	18.4	13.5	7.3	4.2	6.9	2	1	18.1	22.5	17.7	23.0	16	21
22	29.5	2.9	32.1	25.2	2	1.0	18.2	3.8	5	2.6	20.7	7	22
23	17.5	25.6	19.8	16.7	15.8	18.7	14.0	18.6	1.0	1.8	13.0	12.0	23
24	5.3	6.9	16.3	19.7	26	32.8	2.9	18.1	0	2.8	26.8	1.4	24
25	40.0	35.9	39.0	45.3	35.0	16.8	11.5	16.3	1.8	11.0	12.6	12.8	25
26	45.5	55.0	49.5	43.0	46.5	44.5	3.0	31.0	50.5	9.5	34.0	29.0	26
27	33.0	43.0	54.5	55.0	61.0	5.5	2.0	4.5	18.4	35.4	24.1	15.4	27
28	45.5	44.0	45.5	46.0	34.5	42.0	27.0	22.0	12.8	8.8	6.1	0.0	28
29	37.9	32.9	35.0	30.7	30.7	26.9	17.9	22.3	2.5	23.6	24.6	12.2	29
30	17.8	6.6	8.2	11.5	12.8	15.4	14.6	14.0	14.4	19.8	23.5	15.0	30
31	18.8	22.5	21.5	28.5	28.0	31.0	25.1	19.7	21.7	10.5	16.3	10.4	31









**中華民國二十一年一月逐日雲狀雲向雲速**  
**Form, Direction and Velocity of Clouds in the Month of January, 1932.**

日 期	Days of the Month	時間 Hours, Peking Standard Time.						日 期	Days of the Month
		9			15				
		Form 狀	Direction 向	Velocity 速	Form 狀	Direction 向	Velocity 速		
1		○						1	
2		○						2	
3		○						3	
4		○						4	
5		○						5	
6		St Cu *Fr St	*WSW					6	
7		○						7	
8		Fr Cu						8	
9		○						9	
10		○						10	
11		St						11	
12		St Cu						12	
13		○						13	
14		Ci-Cu A-Cu						14	
15		A-Cu, A-St						15	
16		Ci						16	
17		○						17	
18		○						18	
19		○						19	
20		St Cu						20	
21		Ci						21	
22		Ci						22	
23		Ci						23	
24		Ci						24	
25		○						25	
26		Ci-St, Fr-Cu						26	
27		○						27	
28		Ci						28	
29		Ci, Ci-St						29	
30		A-St						30	
31		St						31	

**中華民國二十一年一月逐日雲量及能見度**  
**Cloudiness & Visibility in the Month of January, 1932**

日 期	Days of the Month	雲量 Cloudiness (0-10)		能見度 Visibility (0-9)		日 期	Days of the Month
		時間 Hours		時間 Hours			
		9	15	9	15		
1		0	0			1	
2		0	2		6	2	
3		0	0		6	3	
4		0	0		6	4	
5		0	0	7	6	5	
6		9	1	7	6	6	
7		0	1	7	6	7	
8		1	6	8	6	8	
9		0	0	8	6	9	
10		0	0	8	6	10	
11		0	10	3	4	11	
12		8	0	8	8	12	
13		0	0	8	3	13	
14		2	4	8	8	14	
15		9	10	9	8	15	
16		2	2	8	8	16	
17		0	0	7	6	17	
18		0	0	9	8	18	
19		0	0	7	6	19	
20		1	10	7	6	20	
21		4	10	7	6	21	
22		8	0	8	8	22	
23		1	10	9	7	23	
24		1	10	7	6	24	
25		0	2	7	8	25	
26		9	4	8	7	26	
27		0	0	9	6	27	
28		1	1	7	6	28	
29		7	0	6	6	29	
30		10	10	6	6	30	
31		10	10	6	6	31	

中華民國二十一年二月逐日雲狀雲向雲速									
Form, Direction and Velocity of Clouds in the Month of February, 1932.									
日 期	Days of the Month	時間 Hours, Peiping Standard Time						日 期	Days of the Month
		9			15				
		Form 狀	Direction 向	Velocity 速	Form 狀	Direction 向	Velocity 速		
1		Nb			St			1	
2		○			Ci			2	
3		Ci A-Cu			○			3	
4		○			○			4	
5		○			○			5	
6		○			○			6	
7		○			Ci			7	
8		Ci-Cu			A-Cu			8	
9		A-Cu, St-Cu			Ci *Ci-Cu	*WSW	*60	9	
10		A-Cu	WNW	150	○			10	
11		Ci	W	45.0	Ci-St			11	
12		○			○			12	
13		○			○			13	
14		A-Cu			Ci			14	
15		Fr-Cu			Fr-Cu			15	
16		○			○			16	
17		○			Ci			17	
18		Ci			Ci	WNW	300	18	
19		○			○			19	
20		Ci Ci St			○			20	
21		St-Cu			○			21	
22		Ci			Ci			22	
23		Ci Ci St			Ci Ci St			23	
24		Ci Ci-St			Ci			24	
25		Ci			Ci *Ci St	*NW		25	
26		Ci Fr-Cu			Ci			26	
27		A-Cu Fr-Cu			Ci Fr-Cu			27	
28		Fr-Cu			○			28	
29		○			○			29	

中華民國二十一年二月逐日雲量及能見度							
Cloudiness & Visibility in the Month of February, 1932.							
日 期	Days of the Month	雲量 Cloudiness (0-10)		能見度 Visibility (0-9)		日 期	Days of the Month
		時間 Hours		時間 Hours			
		9	15	9	15		
1		10	10	5	4	1	
2		0	7	7	7	2	
3		8	0	7	8	3	
4		0	0	9	8	4	
5		0	0	9	8	5	
6		0	0	8	8	6	
7		0	4	8	6	7	
8		6	4	7	7	8	
9		10	10	5	10	9	
10		4	0	6	5	10	
11		5	10	7	5	11	
12		0	0	7	7	12	
13		0	0	8	3	13	
14		2	1	8	7	14	
15		1	4	8	5	15	
16		0	0	8	7	16	
17		0	1	9	8	17	
18		1	3	8	7	18	
19		0	0	7	6	19	
20		7	0	7	6	20	
21		1	0	7	6	21	
22		2	2	8	8	22	
23		9	9	9	8	23	
24		10	3	8	8	24	
25		2	9	8	8	25	
26		2	2	8	7	26	
27		5	7	9	7	27	
28		1	0	8	8	28	
29		0	0	8	8	29	

中華民國二十一年三月逐日雲狀雲向雲速

Form, Direction and Velocity of Clouds in the Month of March, 1932.

日 Days of the Month	時間 Hours, Peiping Standard Time															日 Days of the Month
	6			9			12			15			18			
	For.	Dir.	Vel.	For.	Dir.	Vel.	For.	Dir.	Vel.	For.	Dir.	Vel.	For.	Dir.	Vel.	
1	○			Ci			Ci			Ci			○			1
2	Ci			Ci-St, A-St			A-St			A-Cu	W		*A-Cu, St-Cu	*WNW		2
3	○			○			○			○			○			3
4	○			○			Ci-Cu			Ci, Ci-Cu			Ci-Cu			4
5	Ci, Ci-Cu			Ci	W	45.0	A-St			Ci-St	WNW	51.4	A-Cu			5
6	A-Cu			A-Cu			○			○			○			6
7	○			○			○			○			○			7
8	A-Cu			○			○			Ci	NW	40.0	*A-St, *A-Cr	*NW		8
9	Ci			○			○			○			Ci			9
10	Ci			A-St, *A-Cu	*NW		A-St			*Ci, Cl-St, Fr-Cu	*NW		A-St			10
11	St			St			St			A-St			A-St			11
12	○			○			A-St			A-St			A-Cu			12
13	A-Cu			Ci			○			○			Ci			13
14	A-Cu, St-Cu			A-Cu, St-Cu			A-Cu			*A-Cu, St-Cu	*N	28.8	A-Cu			14
15	Ci, Cu			Ci, Fr-Cu			*A-Cu, Fr-Cu	*NW	41	*A-Cu, St-Cu	*N	33.8	Ci, Fr-Cu			15
16	Ci			○			○			○			Ci			16
17	A-Cu			Ci	WNW	44.4	Ci			Ci			*Ci	*WNW		17
18	Ci, St-Cu			*Ci, A-Cu	*WNW	32.8	*Ci, Cl-St, Fr-Cu	WNW	26.3	*A-St, Fr-Cu	*NW	17.8	*Ci, St-Cu, Fr-Cu	*NW	22.0	18
19	Ci			*Ci, Cu	*NW	54.5	Fr-Cu			*Ci	*N	37.9	○			19
20	A-Cu, St-Cu			*Ci, A-Cu, St-Cu	*W	36.0	○			○			○			20
21	A-Cu, St-Cu			Ci			A-St			A-St, St-Cu			A-Cu	W	35.0	21
22	○			○			○			○			○			22
23	○			*Ci, A-Cu	*W	28.1	Ci			Fr-Cu			St-Cu			23
24	○			○			○			*Ci, Cl-Cu	*N	26.0	S-Cu			24
25	Ci			○			○			Ci			A-St			25
26	○			*A-Cu, St-Cu	*W	44.4	*A-Cu, Fr-Cu	*W	50.0	*Ci, Cu, Fr-Cu	*WNW		Fr-Cu			26
27	○			○			Fr-Cu			A-Cu			Fr-Cu			27
28	Fr-Cu			Fr-Cu			Fr-Cu			Cu, Fr-Cu			Fr-Cu			28
29	○			○			○			○			Ci			29
30	○			○			○			○			○			30
31	○			○			○			○			○			31

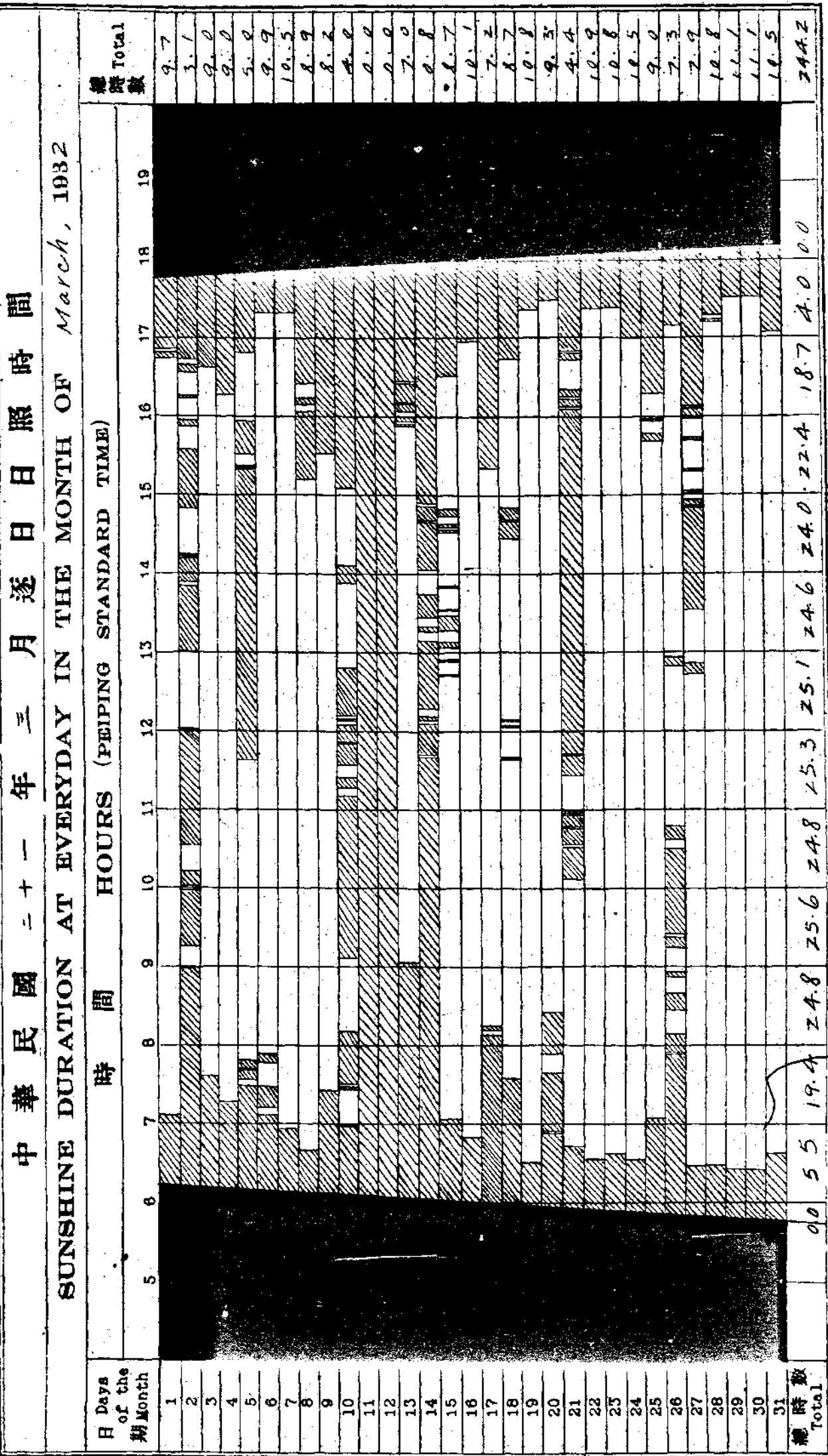
中華民國二十一年三月逐日雲量及能見度

Cloudiness & Visibility in the Month of March, 1932.

日 Days of the Month	雲量 Cloudiness (0-10)					能見度 Visibility (0-9)					日 Days of the Month
	時間 Hours					時間 Hours					
	6	9	12	15	18	6	9	12	15	18	
1	0	2	2	1	0	8	8	8	8	8	1
2	0	10	10	6	7	6	6	6	6	5	2
3	0	0	0	0	0	6	6	6	6	5	3
4	0	0	2	9	1	6	7	6	6	5	4
5	0	9	10	9	3	6	7	4	6	6	5
6	6	1	1	0	0	8	8	8	8	9	6
7	0	0	0	0	0	7	8	7	8	8	7
8	1	0	0	0	9	8	9	8	8	8	8
9	1	0	0	0	1	7	7	7	7	7	9
10	3	9	10	6	10	3	8	8	7	7	10
11	10	10	10	10	10	1	4	1	4	4	11
12	0	1	1	4	1	1	5	5	5	4	12
13	2	5	1	0	1	5	6	5	5	6	13
14	10	10	10	1	1	6	6	6	6	6	14
15	2	2	8	9	7	7	8	7	7	7	15
16	1	0	0	1	1	9	9	8	8	8	16
17	2	0	1	1	8	6	7	7	7	7	17
18	4	1	7	6	3	7	8	8	8	8	18
19	1	1	1	1	0	9	7	8	8	9	19
20	7	2	0	0	1	9	8	8	8	8	20
21	4	1	10	9	1	9	8	8	7	7	21
22	0	0	1	1	1	9	8	8	8	8	22
23	0	3	1	1	1	8	8	8	8	8	23
24	0	0	0	2	1	9	9	8	8	7	24
25	1	0	0	0	9	7	7	7	8	8	25
26	0	3	2	1	1	7	8	8	8	8	26
27	0	0	1	3	5	7	9	8	5	7	27
28	1	1	1	1	1	9	7	7	7	8	28
29	1	0	0	1	1	9	9	8	8	8	29
30	0	0	0	0	0	9	9	8	8	8	30
31	0	0	0	0	0	8	8	7	7	7	31













中華民國二十一年三月逐日氣象要素平均表

Daily Values of Meteorological Elements in the Month of March, 1932.

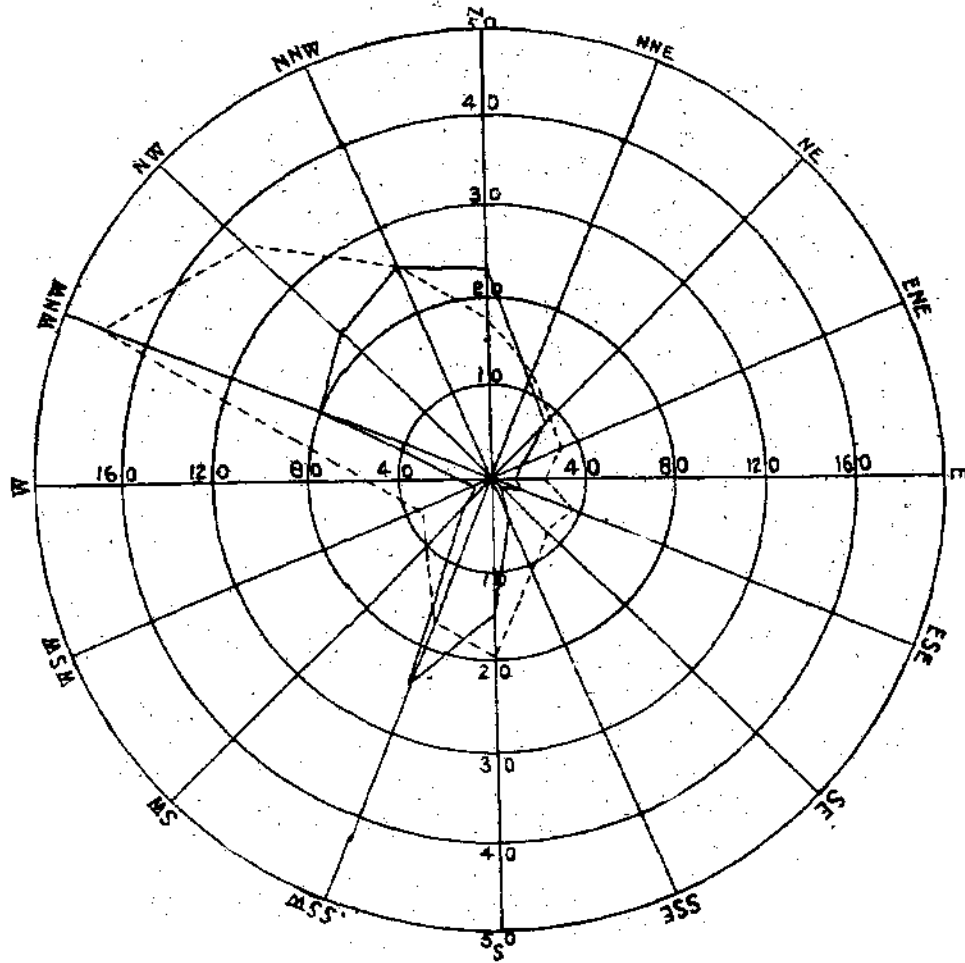
日期 Days of the Month	氣壓 Mean Baro- metric Pres- sure mm 700+	氣溫 Temperature				絕對 濕度 Absolute Humid- ity mm.	相對 濕度 Relative Humid- ity %	風速 Wind Velocity		雲量 Mean Amount of Cloud 0-10	日照 時數 Dura- tion of Sun- shine h	雨量 Rain- fall Amount mm.	下雨 時期 Rain- fall Dura- tion h	能見 度 Visibi- lity 0-9	雜項 Miscellaneous Informations
		最高 Max	最低 Min	較差 Range	平均 Mean			極大 Ex- treme	平均 Mean						
		°C	°C	°C	°C			m/s	km/h						
1	58.0	14.6	-6.5	21.1	4.2	2.66	48.7	9.7	16.1	1.0	9.7		8.0	○ L	
2	60.7	9.1	-4.1	13.2	2.5	2.86	54.3	6.9	9.8	7.8	3.1		6.8	☉ ⊕ ≡	
3	58	14.1	-4.1	18.2	4.8	2.86	46	2	14.3	0.0	9.0		5.8	○ ≡	
4	54	13.7	-3	19.0	4.6	2.55	42.6	6.9	13.1	2.4	9.0		6.4	○	
5	59.49	11.2	-0.2	11.4	6.8	2.6	36	13.9	33.6	7.2	5.0		5.8	☉ ⊕ ∞	
6	62.79	10.9	-4.0	14.9	3.6	2.30	44.0	11.9	17.2	1.4	9.9		7.6	○	
7	59	12.2	-5.5	17.7	3	2.11	36.5	13.1	20.9	0.0	10.5		7.6	○ L	
8	60.3	14	-2	19.9	4.9	2.69	47.2	8.3	13.9	2.4	8.9		7.8	○ L	
9	53.7	11.8	-3	14.8	4.9	2.44	54.9	13.0	14	0.4	8.2		7.0	○	
10	54.28	15.0	2.0	10.0	6.4	3.92	54.4	13.1	30.1	7.6	4.0		7.6	☉ ⊕	
11	51.86	9	-1.9	8.8	2.4	2.9	53	19.4	33.9	10.0	0.0		4.0	☉ ∞ ≡	
12	5	-1.2	-0.1	3.9	-3.0	1.32	35.8	20.3	52.3	2.4	0.0		4.6	○ ∞ ≡	
13	66.48	-7.1	-8.7	1.6	-6.2	1.11	38.4	25.8	69.9	1.6	7.0		5.4	○ ≡	
14	64.74	-1.9	-8.2	6.3	-4.4	1.24	34.4	21.4	50.8	9.4	0.8		6.8	☉ ☽ ≡	
15	62.98	0.8	-4.9	5.7	-2.4	1.47	31.1	22.2	50.4	4.6	8		6.8	☉ ≡	
16	63.91	-7	-9.3	15.0	-1.1	1	42.9	9.7	16.3	0.4	10.1		8.4	○ L	
17	61.11	8.8	-6.8	15.6	0.9	2.19	45.6	6.1	12.4	2.8	7.2		6.8	○ ☽	
18	62.86	8.8	-4.2	13.0	2.6	2.53	49.7	15.3	21.4	4.6	8.7		7.6	☉ ⊕	
19	65.63	10.2	-4.6	14.8	2.8	2.10	38.6	17.2	23.0	0.8	10.8		8.6	○ L	
20	65.39	11.1	-3.5	14.6	3.8	2.37	39.6	13.9	20.8	1.8	9.3		8.2	○	
21	62.21	9.3	-3.5	12.8	3.4	2.57	44.9	7.5	14.0	6.2	4.4		7.8	☉ L ⊕ ☽	
22	63.15	10.7	-0.1	10.8	4.9	2.66	41.6	14.7	29.6	0.0	10.9		8.2	○	
23	63.38	13.3	-4.9	18.2	4.9	2.85	47.3	11.4	15.2	1.2	10.8		8.0	○ L	
24	57.96	16.7	-3.2	19.9	8.0	2.95	40.1	12.2	16.1	0.6	10.5		8.2	○ L	
25	52.51	17.4	-0.8	18.2	9.4	3.42	48.9	17.8	21.0	2.4	9.0		7.2	○	
26	54.41	11.3	2.5	8.8	7.2	3.29	43.1	21.7	32.8	1.4	7.3		7.6	○ ≡	
27	59.72	10.3	-4.4	14.7	3.7	2.33	39.5	25.8	33.8	1.8	7.9		7.4	○ ≡	
28	59.57	7.5	-3.5	11.0	1.7	2.21	43.1	22.2	30.2	1.0	10.8		7.6	○ ≡	
29	61.44	9.6	-5.4	15.0	2.9	2.44	45.5	13.1	22.9	0.4	11.1		8.4	○ L	
30	63.94	12	-3.8	16.5	5.4	2.47	38.6	7.9	16.9	0.0	11.1		8.4	○ L	
31	56.83	20.7	-3.0	23.7	9.5	3.66	43.4	11.1	14.8	0.0	10.5		7.4	○ L	
總數 Total															
平均 Means	60.03	10.0	-4.0	14.0	3.73	2.51	43.9	14.2	25.2	2.7	7.9		7.2		
最高數 Absolute Max	68.37	20.7		23.7		5.27		25.8							
日期 Day	13	31		31		26		13, 27							
最低數 Absolute Min	49.14		-9.3	3.9		0.99	19.2								
日期 Day	11		16	12		14	6								







中華民國二十一年一月份風向圖  
WIND ROSE FOR JANUARY, 1932.

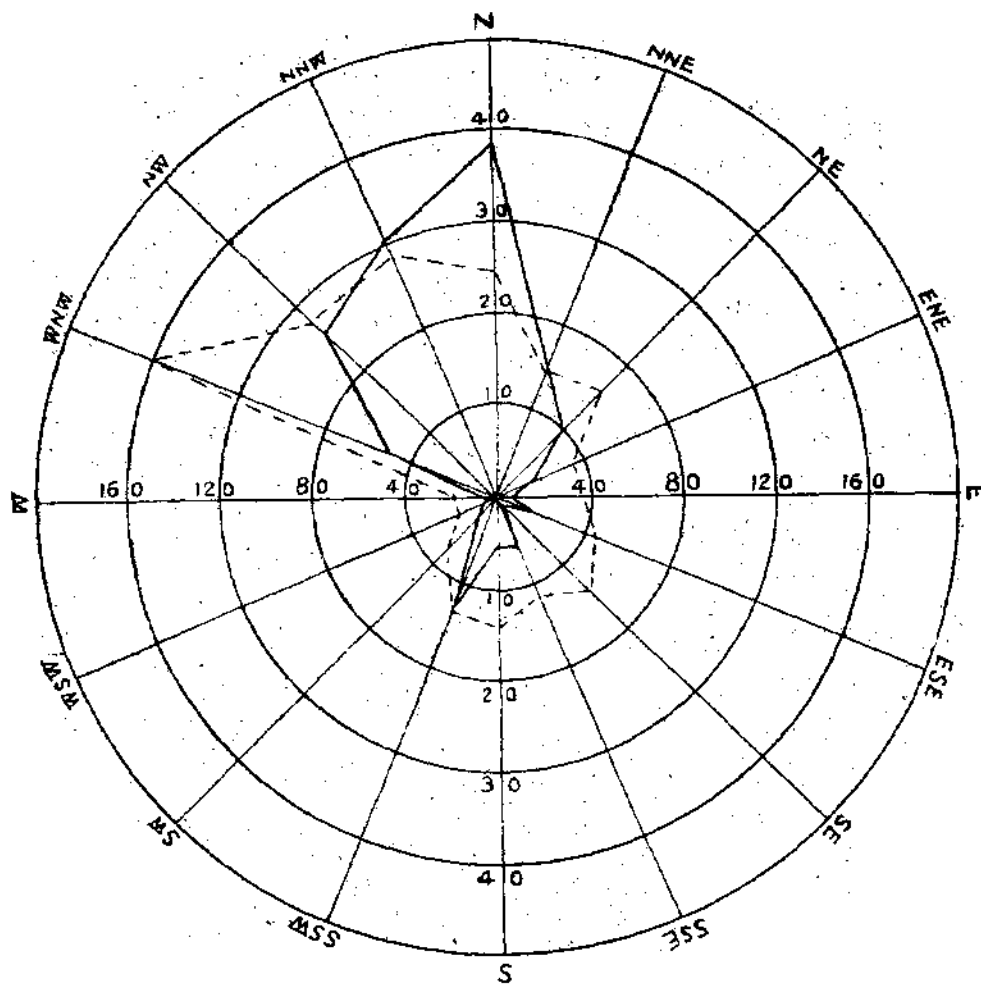


———— Frequency

----- Mean Velocity

DIRECTION	°	N	NNE	NE	ENE	E	ESE	SE	SSE	S	SSW	SW	WSW	W	WNW	NW	NNW	V	O
FREQUENCY	HRS	91	45	35	15	11	15	6	20	59	97	15	5	11	81	92	101	15	27
FREQUENCY	%	12.6	6.0	4.7	2.0	1.5	2.0	0.8	2.7	7.9	13.0	2.0	0	1.5	10.9	12.4	13.6	2.0	3.6
DISTANCE TRAVELED	KM	1628.1	554.3	312.2	124.0	61.4	140.5	49.8	217.0	1144.3	1588.1	151.5	33.5	149.5	3617.5	3569.6	2568.7	—	—
MEAN VELOCITY	KM/H	17.8	12.3	8.9	8.3	5.6	9.4	8.3	10.9	19.4	16.4	10.1	9	15.6	44.7	36.6	25.4	—	—

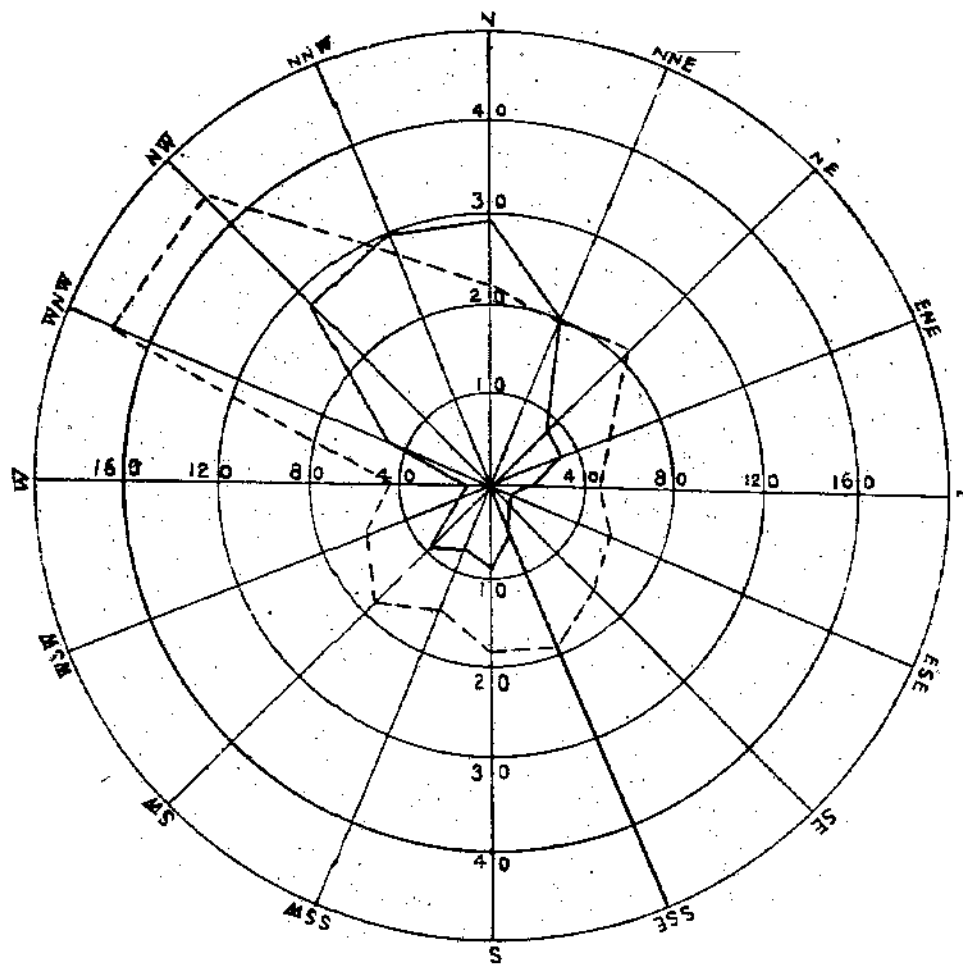
中華民國二十一年二月份風向圖  
WIND ROSE FOR FEBRUARY, 1932.



———— Frequency                      - - - - Mean Velocity

DIRECTION		N	NNE	NE	ENE	E	ESE	SE	SSE	S	SSW	SW	WSW	W	WNW	NW	NNW	V	C
FREQUENCY	HRS.	154	59	89	17	5	17	2	22	21	51	11	5	5	49	102	121	15	1
	%	22.1	8.6	12.8	2.4	0.7	2.4	0.3	3.2	3.0	7.3	1.6	0.7	0.7	7.0	14.7	17.4	2.2	0.1
DISTANCE TRAVELLED	KM	3778.5	863.5	618.0	150.5	45.0	191.0	28.5	256.5	292.5	869.5	87.0	22.5	24.5	1973.0	2789.0	3428.7	—	—
MEAN VELOCITY	KM/H	24.5	14.6	15.8	8.9	9.2	11.2	14.3	11.7	13.9	13.1	7.9	4.5	4.9	40.3	27.3	23.3	—	—

中華民國二十一年三月份風向圖  
WIND ROSE FOR MARCH, 1932.



———— Frequency

----- Mean Velocity

DIRECTION		N	NNE	NE	ENE	E	ESE	SE	SSE	S	SSW	SW	WSW	W	WNW	NW	NNW	V	C
FREQUENCY	HRS	117	81	34	34	18	9	10	21	35	29	38	16	9	48	112	119	-	7
FREQUENCY	%	15.7	10.9	4.6	4.6	2.4	1.2	1.3	2.8	4.7	3.9	5.1	2.2	1.2	6.5	15.1	16.0	0.9	0.9
DISTANCE TRAVELLED	KM	1589.0	1877.0	736.1	412.2	216.1	123.8	157.6	195.0	638.0	420.0	686.6	233.2	98.5	2134.3	4964.1	3297.0	-	-
MEAN VELOCITY	KM/H	22.1	19.5	21.7	18.9	12.0	13.8	15.8	18.8	18.2	14.5	18.1	14.6	10.9	44.1	44.3	27.7	-	-



中 華 民 國 二 十 一 年 一 月 份 氣 象 綱 要

Monthly Summary for January, 1932.

氣 壓 Air Pressure

絕對最高	Extreme Maximum	775.35 <sup>mm</sup>	6日 22時 on 6th 22 <sup>h</sup>
絕對最低	Extreme Minimum	751.04	5日 14時 on 5th 14 <sup>h</sup>
最大每日較差	Maximum Diurnal Range	16.24	6日 on 6th
最高平均	Mean Maximum	768.19	
最低平均	Mean Minimum	762.98	
平 均	Mean	765.25	

溫 度 Air Temperature

絕對最高	Extreme Maximum	11.7°C	4日 13時 on 4th 13 <sup>h</sup>
絕對最低	Extreme Minimum	-14.9	1日 7時 on 1st. 7 <sup>h</sup>
最大每日較差	Maximum Diurnal Range	20.0	2日 on 2nd
最高平均	Mean Maximum	4.4	
最低平均	Mean Minimum	-8.5	
平 均	Mean	-1.9	

濕 度 Humidity

		絕 對 Absolute	
最 大	Greatest	4.28	5日 20時 on 5th 20 <sup>h</sup>
最 小	Smallest	0.74	6日 21時 on 6th 21 <sup>h</sup>
平 均	Mean	2.03	6日 22時 on 6th 22 <sup>h</sup>
		相 對 Relative	
最 小	Smallest	24.5%	13日 14時 on 13th 14 <sup>h</sup>
平 均	Mean	52.6%	

降 水 量 Precipitation

雨 量	Rainfall	0.0 <sup>mm</sup>
雪 量	Snowfall	0.0
總 量	Total Amount	0.0
一日最多量	Greatest in 24 hours	

雜 記 Miscellaneous Informations

晴 天 日 數	Clear days	16
曇 天 日 數	Partly cloudy days	11
陰 天 日 數	Clouds days	4
雨 天 日 數	Rainy days	0
有 霜 日 數	Days with hoar frost	12
有 低 霧 日 數	Days with ground fog	2
有 大 風 日 數	Days with gale	9
有 積 雪 日 數	Days with ground covered by snow	2
有 日 暈 日 數	Days with Solar halo	4
有 霾 日 數	Days with haze	1

中 華 民 國 二 十 一 年 二 月 份 氣 象 綱 要

**Monthly Summary for February, 1932.**

**氣 壓 Air Pressure**

絕對最高	Extreme Maximum	775.23 <sup>mm</sup>	23 日 9 時 on 23th 9 <sup>h</sup>
絕對最低	Extreme Minimum	756.39	21 日 14 時 on 21th 14 <sup>h</sup>
最大每日較差	Maximum Diurnal Range	8.40	22 日 on 22th
最高平均	Mean Maximum	769.29	
最低平均	Mean Minimum	764.68	
平 均	Mean	767.00	

**溫 度 Air Temperature**

絕對最高	Extreme Maximum	14.2°C	29 日 16 時 on 29th 16 <sup>h</sup>
絕對最低	Extreme Minimum	-14.6	18 日 7 時 on 18th 7 <sup>h</sup>
最大每日較差	Maximum Diurnal Range	22.5	29 日 on 29th.
最高平均	Mean Maximum	2.6	
最低平均	Mean Minimum	-9.4	
平 均	Mean	-3.5	

**濕 度 Humidity**

絕 對 Absolute			
最 大	Greatest	3.53	1 日 13 時 on 1st 13 <sup>h</sup>
最 小	Smallest	0.82	16 日 7 時 on 16th 7 <sup>h</sup>
平 均	Mean	1.66	
相 對 Relative			
最 小	Smallest	23.0%	6 日 15 <sup>h</sup> 16 時 on 6th 15 <sup>h</sup> 16 <sup>h</sup>
平 均	Mean	47.4%	

**降 水 量 Precipitation**

雨 量	Rainfall	0.0 <sup>mm</sup>	
雪 量	Snowfall	2.0	
總 量	Total Amount	2.0	
一 日 最 多 量	Greatest in 24 hours	2.0	1 日 on 1st

**雜 記 Miscellaneous Informations**

晴 天 日 數	Clear days	19
曇 天 日 數	Partly cloudy days	8
陰 天 日 數	Clouds days	2
雪 天 日 數	Rainy days	1
有 積 雪 日 數	Days with ground covered by snow	2
有 霜 日 數	Days with hoar frost	7
有 霧 日 數	Days with mist	1
有 霾 日 數	Days with haze	2
有 大 風 日 數	Days with gale	4
有 日 暈 日 數	Days with solar halo	4
有 月 暈 日 數	Days with lunar halo	1

中 華 民 國 二 十 一 年 三 月 份 氣 象 綱 要

Monthly Summary for March, 1932.

氣 壓 Air Pressure

絕對最高	Extreme Maximum	768.37 <sup>mm</sup>	13日 22時 on 13th. 22 <sup>h</sup>
絕對最低	Extreme Minimum	749.14	11日 14時 on 11th 14 <sup>h</sup>
最大每日較差	Maximum Diurnal Range	9.55	26日 on 26th
最高平均	Mean Maximum	762.73	
最低平均	Mean Minimum	757.52	
平 均	Mean	760.03	

溫 度 Air Temperature

絕對最高	Extreme Maximum	20.7°C	31日 16時 on 31th 16 <sup>h</sup>
絕對最低	Extreme Minimum	-9.3	16日 6時 on 16th 6 <sup>h</sup>
最大每日較差	Maximum Diurnal Range	23.7	31日 on 31th
最高平均	Mean Maximum	10.0	
最低平均	Mean Minimum	-4.0	
平 均	Mean	3.3	

濕 度 Humidity

絕 對 Absolute			
最 大	Greatest	5.27	26日 9時 on 26th 9 <sup>h</sup>
最 小	Smallest	0.99	14日 1時 on 14th 1 <sup>h</sup>
平 均	Mean	2.51	
相 對 Relative			
最 小	Smallest	19.2%	6日 17時 on 6th 17 <sup>h</sup>
平 均	Mean	43.9%	

降 水 量 Precipitation

雨 量	Rainfall	0.0 <sup>mm</sup>
雪 量	Snowfall	0.0
總 量	Total Amount	0.0
一日最多量	Greatest in 24 hours	0.0

雜 記 Miscellaneous Informations

晴 天 日 數	Clear days	23
曇 天 日 數	Partly cloudy days	4
陰 天 日 數	Clouds days	4
雨 天 日 數	Rainy days	0
有 霜 日 數	Days with Hoar frost	11
有 霧 日 數	Days with mist	2
有 霾 日 數	Days with haze	3
有 大 風 日 數	Days with gale	8
有 日 暈 日 數	Days with solar halo	5
有 月 暈 日 數	Days with lunar halo	2
有 月 華 日 數	Days with lunar corona	1

**中華民國二十一年一月各小時氣象要素平均表**

**Mean Hourly Values of Meteorological Elements in the Month of January, 1932.**

北平標準時間 Hours Peiping Standard Time	氣壓 Barometric Pressure 700mm+	溫度 Temperature °C	濕度 Humidity		雲量 Mean Amount of Cloud 0-10	雨量 Rainfall Amount mm	能見度 Visibility 0-9	風 Wind	
			絕對 Absolute mm	相對 Relative %				向 Direction Dominant	速 Velocity km/hr
1	65.41	-5.1	1.98	63.8				NNW	22.5
2	65.51	-5.1	1.98	64.2				N	21.5
3	65.56	-5.1	1.90	62.2				NNW,N	21.7
4	65.33	-5.2	1.88	61.8				N	21.2
5	65.23	-5.6	1.81	62.2				NNW	20.1
6	65.30	-6.0	1.77	62.0				N	19.9
7	65.59	-5.7	1.76	61.7				NNW	20.9
8	65.88	-5.8	1.77	61.9				N	19.5
9	66.40	-3.1	1.96	53.6	30		7.3	N	19.9
10	66.56	-0.8	2.06	47.3				NNW	18.4
11	66.34	1.1	2.10	42.2				NNE	18.5
12	65.65	2.3	2.12	39.0				NE	18.7
13	64.87	3.2	2.12	36.5				WNW	21.1
14	64.38	3.6	2.14	35.8				SSW	21.7
15	64.27	3.6	2.13	35.9	3.3		6.6	S	24.1
16	64.19	2.8	2.08	36.8				SSW	23.1
17	64.22	1.4	2.06	40.4				S	22.8
18	64.48	-0.1	2.10	46.0				S	22.2
19	64.72	-1.2	2.21	52.5				SSW	21.8
20	64.96	-1.7	2.26	55.7				SSW	21.5
21	65.16	-2.4	2.20	57.7				SSW,NW	21.8
22	65.34	-3.4	2.16	60.8				SSW	22.3
23	65.43	-3.9	2.10	61.6				NW	21.9
24	65.30	-4.4	2.06	62.6				NW	22.4
Total or Means	65.26	-1.9	2.03	52.7	3.2		6.9	SSW, N	21.2

**中華民國二十一年二月各小時氣象要素平均表**

**Mean Hourly Values of Meteorological Elements in the Month of February, 1932.**

北平標準時間 Hours Peiping Standard Time	氣壓 Barometric Pressure 700mm+	溫度 Temperature °C	濕度 Humidity		雲量 Mean Amount of Cloud 0-10	雨量 Rainfall Amount mm	能見度 Visibility 0-9	風 Wind	
			絕對 Absolute mm	相對 Relative %				向 Direction Dominant	速 Velocity km/hr
1	67.43	-6.1	1.53	52.0				NNW	22.7
2	67.47	-6.5	1.51	53.3				N	22.7
3	67.35	-7.0	1.48	54.3				NNW	21.8
4	67.22	-7.4	1.48	56.0				N	21.4
5	67.45	-7.7	1.51	58.3				N	21.1
6	67.24	-8.1	1.52	60.3				N	20.5
7	67.51	-8.3	1.52	61.2				NNW	19.7
8	67.90	-7.5	1.57	59.9				N	18.7
9	68.23	-4.6	1.69	52.1	30	1.2	7.6	N	20.7
10	68.16	-2.7	1.75	46.0				NW,NNE,N	23.1
11	67.87	-1.2	1.77	41.9				NNE	23.4
12	67.34	-0.1	1.80	39.4				N	24.7
13	66.49	1.0	1.84	37.1				NNW,N,NNE	22.8
14	65.91	1.8	1.85	35.6				V	22.1
15	65.67	2.1	1.82	34.3	30		7.0	WNW	23.1
16	65.53	2.0	1.82	34.7				WNW	26.8
17	65.62	1.3	1.77	35.4				WNW	26.1
18	65.94	-0.6	1.66	37.8			0.4	WNW	24.4
19	66.37	-2.1	1.64	41.8				N	21.0
20	66.65	-3.0	1.69	45.7				SSW	19.9
21	66.99	-3.5	1.67	46.9				NNW	20.0
22	67.20	-4.3	1.64	48.9				NNW	20.3
23	67.30	-5.1	1.63	51.7				NNW	19.4
24	67.37	-5.5	1.60	52.3				NNW	22.2
Total or Means	67.00	-3.5	1.66	47.4	30	2.0	7.3	N	22.0

中華民國二十一年三月各小時氣象要素平均表

Mean Hourly Values of Meteorological Elements in the Month of March, 1932.

北 平 標 準 時 間  Hours Peiping Standard Time	氣 壓  Barometric Pressure  700mm ±	溫 度  Tempera ture  C	濕 度 Humidity		雲 量 Mean Amount of Cloud 0-10	雨 量 Rainfall Amount mm	能 見 度 Visibilty 0-9	風 Wind	
			絕 對 Absolute mm	相 對 Relative %				向 Direction Dominant	速 Velocity km/hr
1	60.75	-0.5	2.27	50.6				N	21.4
2	60.69	-1.0	2.32	53.6				NW	20.9
3	60.46	-1.7	2.30	56.1				NW	19.9
4	60.30	-2.2	2.30	58.3				N,NNW	20.0
5	60.31	-2.5	2.31	59.6				N	20.0
6	60.49	-2.8	2.25	59.3	2.2		7.3	N	20.5
7	60.74	-2.1	2.36	59.3				NW,N	20.8
8	61.05	0.3	2.61	55.2				N,NNW	21.0
9	61.19	2.8	2.70	46.9	2.3		7.6	N	19.7
10	61.16	4.7	2.78	42.2				NNW,N	22.6
11	60.79	6.3	2.81	38.5				N	23.3
Noon 午正	60.19	7.3	2.75	35.2	3.0		7.1	NNW,N	28.5
13	59.54	8.1	2.78	33.6				NNW	31.3
14	58.89	8.9	2.80	32.2				NNW	31.2
15	58.52	9.3	2.81	31.3	3.0		7.0	NNW	32.2
16	58.33	9.3	2.73	30.6				NNW	32.5
17	58.37	8.8	2.65	30.7				NNW	33.0
18	58.70	7.6	2.53	31.8	3.0		7.1	WNW	31.4
19	59.11	5.8	2.40	33.9				N	28.4
20	59.65	4.3	2.37	37.1				SW,NW,NNE	25.3
21	60.05	3.2	2.35	40.0				SW,NW,NNE	24.6
22	60.13	2.7	2.38	42.3				NW	24.6
23	60.46	1.9	2.32	43.0				NNE	26.8
Midn 子正	60.16	0.9	2.31	46.4				N	23.5
Total or Means	60.03	3.3	2.51	43.7	2.7		7.2	N	25.2