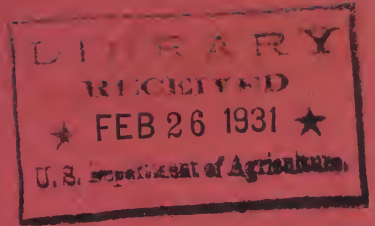


Historic, Archive Document

Do not assume content reflects current scientific knowledge, policies, or practices.

7257



1931

Lottys

MADISON
NEW JERSEY

GREETINGS

THIS is the 28th Annual Edition of our Catalogue, and with it goes to the four corners of the earth the precious freight of our experience in growing, testing, and distributing the newest and the best stocks in our specialties. We have a select list of correspondents in different parts of the world, who give us the benefit of their knowledge in the newer plants, and we have a splendid list of loyal customers who stand back of us, and make it possible for us to maintain our unique organization. To all of these, our heartfelt thanks is due, and as we journey through life together, may we all enjoy the association and fellowship, that the study of horticulture engenders. Stocks fall, dynasties crumble, politicians tell us "that the country is going to the dogs," yet the flower lover confidently plants his garden knowing that "seed time and harvest will not cease," and by his sane and cheerful outlook on life, furnishes a fine example for his neighbor to emulate.

What is new this year, is almost always the first question asked us when an associate greets us. Well, the novelty of 1931 is undoubtedly the Orchid Dahlias. Delicate and dainty they took Europe by storm, as exhibited by Dobbie of Rothsay, Scotland, and the best of them are described in this catalogue. We arranged for a simultaneous distribution here so our customers would be up-to-date.

The usual list of New Hardy Chrysanthemums will be found interesting and up to standard. Look over our New Imported Carnations, "Coral Glow," and "Zorro," unique in coloring and a decided change. A fillup is needed in Carnations; these varieties will help furnish it.

New Roses. Perhaps the finest thing in New Outdoor Roses, is the dwarf Polyantha "Gloria Mundi." The color is a marvelous scarlet salmon, that must be seen to be appreciated. This Rose has won hosts of medals and commendatory notices. "Chaplin's Pink Climber" continues on its winning way, but will have to compete this year with a brand new scarlet Climber from Australia named "Scorcher," which will make its mark.

In Perennials. Our Delphiniums are famous. No expense has been spared to make these the finest collection in the world, and we challenge comparison.

Our list of Rock Plants comprise most everything useful in this popular class of plants, and if you don't see what you want write us about it.

Orders for plants and all correspondence should be addressed as follows:

TOTTY'S
MADISON, NEW JERSEY

otherwise delays will ensue.

If you are unable to call on us at Madison, stop at our retail flower store at 4 East 53rd St., New York City, where you will find the finest and newest things in flowers, and where orders for plants may be left.

MADISON

Totty's

NEW JERSEY

Novelty Chrysanthemums For 1931



MADISON

Madison

Crimson, with a bronze reverse. When grown on single stems, it makes wonderful flowers, but it is also particularly fine, when grown as a pot plant with 12 to 20 flowers on a plant. It can also be grown, as a standard. Any bud after August 15th. The later buds are much finer in color than earlier buds, as the reverse on the later buds are a brilliant jasper red.

Price: \$2.00 each, \$20.00 per dozen

Novelty Chrysanthemums For 1931

(continued)



ARMISTICE DAY

Armistice Day

The crowning result of a long line of crimson seedlings. The color is exquisite, as every petal reflexes, showing the flower to its best advantage. The reverse is a brilliant gold, with much shadings on the tip. When the flower is fully opened, it reminds one of "Pockett's Crimson" at its very best.

Crown bud, August 20th. Height, 4 to 5 feet.

Price: \$2.00 each, \$20.00 per dozen

Novelty Chrysanthemums For 1931

(continued)



GAIETY

Gaiety (DePetries)

The earliest large flowering reflexing pink that we have, fully up to exhibition size, and finish. It was certificated as both a commercial and an exhibition variety on October 17th, by the C. S. A.

It is too early for the late Shows, but a marvelous variety in its season. The growth is very dwarf and robust. Height, $2\frac{1}{2}$ to 3 feet. Take bud August 20th onward.

Price: \$2.00 each, \$20.00 per dozen

Ambassador

Early large flowering white Chrysanthemums, with fine stiff stem holding the bloom erect without artificial support. Plant produces five foot growth from June planting, and needs no special attention to produce first class blooms.

Price: 50c each, \$5.00 per dozen, \$35.00 per 100

Novelty Chrysanthemums For 1931

(continued)



SILVER DAWN

Silver Dawn (DePetries)

A very late commercial white that produces 100% perfect flowers. The growth is very free, foliage medium in size, permitting the plants to be grown closely together, a necessity in these days of low prices.

Price: \$2.00 each, \$20.00 per dozen

Golden Majestic

A pure glowing golden yellow, sport of the ever popular "Majestic," which is well-known and liked by all Chrysanthemum growers.

Bud taken August 25th; height 4 feet.

Price: \$1.00 each, \$10.00 per dozen, \$75.00 per 100

Novelty Chrysanthemums For 1931

(continued)



ELEANOR BEARDSLEE

Eleanor Beardslee (Thompson)

This variety makes a wonderful pot plant, and it has made a name for itself the past two seasons at the New York Show. Anemone type, dwarf in growth, with color a very fine shade of bronzy yellow, and a magnificent pot plant when fully developed.

Price: \$2.00 each, \$20.00 per dozen

Novelties From The U. S. Dept. Of Agriculture

The following varieties were sent us by Department of Agriculture for distribution, and we are pleased indeed to present them to our customers, as the "cream" of the varieties selected by the experts of the Department. Stock is limited, however, so we advise early ordering.



MRS. CALVIN COOLIDGE

MRS. CALVIN COOLIDGE

Very dwarf and robust in growth with flowers of the utmost regularity, looking as though they had been marcelled into shape. Color, a brilliant Brazil red, and this variety will also make a magnificent pot plant.



MONA

MONA

A brilliant bronzy yellow, that comes in splendidly for the November Shows. The footstalk of the bud is very long, so the flowers need no dis-

budding, but make beautiful large showy branches without any effort or trouble on the part of the grower.



CAROLINE MASTICK

KATHERINE RUSSELL

This variety is not a single, but is such a distinct Japanese type that it will be well worth growing. The petals are quilled and stand out stiff from the center. A brilliant rose pink in color, with an excellent growth.

CAROLINE MASTICK

A very bright shade of pink in color, exceptionally fine in habit, producing long, handsome sprays of flowers, and no disbudding is necessary with this variety, as the growth is long and open.

Price: \$2.00 each, \$20.00 per dozen

Address All Correspondence to Totty's, Madison, N. J.

Newer Varieties Not Generally Distributed



META J. BERGEN

Meta J. Bergen

One of the most valuable additions to the Single introductions of many years, carrying as it does several rows of petals. The color is a brilliant Pompeian red. It is a splendid keeper and shipper. One is attracted to this variety to the exclusion of all others in the house. This variety is the origination of Francis H. Bergen of Summit, N. J., who has given us such fine varieties as "Hilda Bergen," "Mrs. F. H. Bergen," "Ruth Bergen," etc.

Price: 50c each, \$5.00 per dozen, \$35.00 per 100

Marian H. Uffinger

This is the finest exhibition Chrysanthemum we have sent out in twenty years. The color is a dazzling bronzy crimson with a gold reverse. The bloom is reflexed in appearance, but the tips of the individual petals incurve, showing the gold reverse in a very distinctive manner. We consider "Marian H. Uffinger" a splendid variety in every way and strongly recommend it to all of our customers. This variety won the Silver Cup at the National Chrysanthemum Society Show as the best seedling of the year. Take bud August 20th to 25th. Height, 4 feet.

Price: \$1.00 each, \$10.00 per dozen, \$75.00 per 100

Standard Varieties Exhibition Chrysanthemums

The following list of Chrysanthemums are the varieties that are usually found exhibited at the different shows. Many of these varieties are also grown by commercial florists for their cut flower trade, and we are listing only the very best of the many varieties introduced for the past ten years. We can recommend the entire list very strongly to anyone who wishes to grow Chrysanthemums in a greenhouse.



BRONZE TURNER

Color is buff bronze, with the lower petals shaded maroon. Since everyone who has grown Chrysanthemums, or has seen them exhibited at the flower shows, knows the Turner type; to describe it further would be to use up valuable space on a well-known subject.

CARRIE BEINECKE

When we say that this variety is an improvement on "Majestic," it is rather a broad statement, but when one sees the lovely, warm bronze color and perfect growth with ideal stem and foliage, you will agree with us that this is the finest variety distributed in our twenty-five years of introducing novelties. Any bud after August 20th. Height, 5 to 6 feet.

Price: 50c per plant, \$3.00 per dozen, \$20.00 per 100

DR. J. M. INGLIS

A rich wine purple amaranth with a silver reverse. The petals are loosely incurved and this variety is in every way a great improvement on Earl Kitchener.

E. N. WARD

An Australian variety of golden orange, of the type made famous by "Mrs. Kershaw," of which it is a seedling. The color is a glorious glowing fawn with bronze red reverse and bronzy red lines on the edge of some of the petals. Crown bud, August 25th onward. Buds taken earlier are long in the neck. Height, 5 feet.

ELBERON

A large, incurved clear pink with wonderful foliage and stiff stems. Not a tall grower, but a very fine variety.

EDMUND STILLMAN KELLY

Pure glistening white. Very strong in growth and one of the good November varieties.

FIRST DAWN

The color is an exquisite chamois pink with gold tips on the petals. We shall be greatly surprised if this variety does not line up in the Pockets class, and become in its color one of the standard varieties in the country. The stem and foliage are ideal, and it is apparently immune from disease with all qualifications for rendering this variety the best in many years. Height, 4 feet. To get the best results and the unique color in this variety a late crown bud from August 25th onward should be taken.

FLORENCE BAHN

A chestnut bronze of medium size but a wonderful color. The foliage is small, which permits fairly close planting in the benches. A bud August 25th produces flowers of perfect form with foliage right up to the flowers. Height, 5 feet.

FRIENDLY RIVAL

The finest yellow for Thanksgiving and about the brightest yellow it is possible to procure. Bud taken September 20th. Height, 4 feet.

GRACE STURGIS

An enormous flower of rich wine red with a pinkish silver reverse. This is one of the largest Chrysanthemums we have ever seen, and the growth is wonderfully strong, running to 6 feet in height. On account of its vigorous rooting system, it takes up feed much more quickly than other varieties, therefore it should not be fed as freely as other sorts. Crown bud, August 25th.

J. R. BOOTH

This is the golden yellow sport of Nagirroc which is too well known for further description. Height, 4 feet. Crown bud, August 26th.

LOUISA POCKETT

Color purest possible white. Flower, stem and foliage are alike enormous. Plants need plenty of room to develop. Certificated C. S. A. Height, 5 feet.

MAJESTIC

Clear, shiny amber bronze; a very brilliant shade of color, and a most attractive variety.



MRS. G. G. MASON

MARIE DE PETRIS

A wonderful incurved commercial variety of intense yellow, deeper in color than Golden Glory. Foliage right up to the flowers, regardless of what bud is taken. Throws 100 per cent perfect bloom regardless of bud. It has a stronger and more rigid stem than any other variety grown. Its foliage is closely set, very healthy, and mildew proof. Individual flowers average 20 to 22 inches in circumference. Matures, November 10th to 15th.

MILLICENT ROGERS

Color bronzy pink, with gold shadings. Foliage right up to the flower. Stiff stem and fine habit of growth. Height, 4½ feet. Crown bud, August 15th.

MISS RITA MITCHELL

Color salmon bronze with fawn reverse; a most attractive variety. Enormous in size and will be one of the most popular kinds shown on the exhibition tables once it has become well known and generally distributed.

MRS. E. KERSHAW

A splendid, warm bronze, immense petals and artistically arranged. Tremendous growth of foliage and stem. A color that is sure to please the exhibition grower. Height, 5 feet. Bud, August 15th, onward.

MRS. F. E. LEWIS

An exquisite deep crimson with an old gold reverse. Petals are extremely wide and the wonderful combination of crimson and gold is strikingly attractive. In color, is far superior to Pockets Crimson at its very best. Late crown bud the first week in September. Height, 4 feet. Certificated 93 points.

MRS. G. G. MASON

Very distinct variety; color blood red with a gold reverse, though very, very little of the gold reverse appears. Height 5 feet. Crown bud August 20th.

Price: 50c per plant, \$3.00 per dozen, \$20.00 per 100

MRS. GILBERT DRABBLE

On an early crown bud from August 10th, this variety produces a marvelous flower; petals are arranged in a whorl, rendering them most attractive. Purest white in color.

MRS. HENRY EVANS

This Chrysanthemum might easily be described as a crimson Cactus Dahlia, since its characteristics resemble this flower. Every petal reflexes back, showing its color to the best advantage. Particularly valuable in the short stem classes on the exhibition table. A pure deep crimson, an Australian variety. Bud, August 20th onward. Height, 4 to 5 feet.

MRS. J. LESLIE DAVIS (Pink Turner)

It is absolutely identical with Turner in every respect save color, which is a clear lavender pink. The growth and habit are a duplicate of the original parent and no other description is necessary. Pink Turner will find a premier place on its own merits. Height, 5 feet.

MRS. JULES C. LEEDS

A very vivid blood red Chrysanthemum. The gleaming brownish petals of this variety are very novel and, on account of its marvelous color, it will be one of the most popular varieties. The individual petals are very broad and hang down gracefully from the center, making a perfect sphere in form. Splendid stem and foliage. Height, 4 feet, second crown bud.

MRS. LOUIS B. TIM

Lustrous white with incurving petals; the earliest and largest white, blooming in early October. Stem and foliage absolutely ideal. Dwarf grower. 2½ to 3 feet high. Bud, August 15th.

NAGIRROC

Finest exhibition bronze we have ever distributed; color, deepest glowing orange bronze, 45 inches in circumference. Height, 5 feet. Any bud after August 15th.

PRESIDENT JOHN EVERITT

Color, very unique chamois buff, when first opening the petals are very closely incurved forming a perfect ball, 27 inches in circumference. Bud, August 15th onward. Height, 3½ feet.

THOS. W. POCKETT

After some forty years of hybridizing Chrysanthemums, Thos. W. Pockett has produced a variety that he considers is good enough to call after himself. This is a lovely clear pink with incurving tips, which has in its color every desirable attribute. We suggest a late bud the last days in August to give a perfect flower and color. Height, 6 feet, second crown bud.

W. H. EVERARD

Another variety named in Australia, in color a charming salmon bronze, when the bud is taken about the middle of August. Later buds show a much deeper color, though not such heavy petalage. One of the kinds that it is a pleasure to distribute. The growth is very strong and vigorous. Height, 6 feet.

MRS. G. G. MASON

Very distinct variety; color blood red with a gold reverse, though very, very little of the gold reverse appears. Height, 5 feet. Crown bud, August 20th.

**NAGIRROC (Golden Champion)****PATRICIA GRACE**

An exquisite variety for lovers of exhibition 'Mums, who are looking for the unusual in this flower. The color is a lovely shell pink and the petals are large and tubular in shape, standing straight out from a common center.

The older Chrysanthemum grower will recall "Lillian F. Bird" of thirty years ago and this variety is a duplicate in formation and growth of that well-known sort.

WM. RIGBY

The yellow sport of Mrs. Gilbert Drabble; color beautiful, bright canary yellow. Exact duplicate of Mrs. Gilbert Drabble in every way, except color.

WILLIAM TURNER

The best variety we have ever introduced; it has created a sensation when exhibited at the shows. Makes a perfect ball of the purest possible white.

WILLIAM H. WAITE

Color, deep warm bronze, so brilliant as to seem almost shading to scarlet in some of the flowers. Bud early in August will develop, but bud taken around August 25th will show a more brilliant color. Height, 4 to 5 feet.

YELLOW POCKETT

A duplicate of Louisa Pockett in every way save color—every exhibitor simply must grow it.

YELLOW WM. TURNER

A light yellow sport from Wm. Turner; identical with its splendid parent in every respect, except in color; will be one of the most widely grown yellows for this season.

Price: 50c per plant, \$3.00 per dozen, \$20.00 per 100

Standard Varieties of Commercial Chrysanthemums

The commercial varieties of Chrysanthemums are grown by customers who desire quantity rather than quality. These are not as large in the individual flowers, as the exhibition Chrysanthemums, but equally as satisfactory, if one is not looking for flowers exceptional in size.

Price: 50c per plant, \$2.00 per dozen, \$15.00 per 100.

ADRIAN'S PRIDE

Brilliant yellow for Thanksgiving, and is taking the place of Golden Chadwick to a great extent.

BETSY ROSS

One of the finest midseason whites. It is a perfect incurved flower and sturdy, upright grower. Date of bud, August 25th. Matures about November 5th.

CELEBRATION

A sport of Eaton, with the same wonderful texture and fine keeping quality; same splendid stem and foliage. A glistening yellow. Good for its date, which is November 5th, and budding date September 10th.

CHIEFTAIN

A beautiful incurving pink of perfect shape. Certification in Boston, Philadelphia and Chicago. Perhaps the finest incurved pink commercial variety in cultivation today.

CORONNA

A beautiful golden yellow and one of the best commercial varieties grown. Flowering November 1st.

CRYSTAL DOME

An incurved white, flowering about November 5th. A very fine variety for this date.

DETROIT NEWS

Golden bronze variety, maturing October 25th. Take bud August 30th.

E. A. SEIDEWITZ

One of the best late flowering pink Mums, introduced to date. Can be had for Christmas if necessary.

EARLY FROST

Most popular early white, coming into flower September 15th onward.

DR. ENGUEHARD

Very largely grown as a late commercial pink.

GLADYS PIERSON

Apricot orange, flowering about November 25th. Take bud September 30th.

GOLDEN MISTLETOE

Owing to its lateness, this variety is valuable to the commercial grower. A light yellow sport from Mistletoe. Height 5 feet. Date of bud, September 30th.



GOLDEN BRONZE

A wonderful shade of golden bronze, that is so popular at this time. Produces large, spreading blooms of good substance, blooming October 25th to November 1st. Terminal bud for best color. Height 5 feet, from late June planting, and early July planting, will give good commercial blooms.

GOLD LODGE

The best early yellow coming into flower the first week in October, also a splendid pot variety.

HARVARD

Japanese reflexed, very dark crimson; in perfection November 15th and later.

HILDA H. BERGEN

We grew one house of this variety, running four to six flowers to a plant, which was a beautiful sight, and very much admired by every grower who visited us. The color is a deep rich mahogany bronze, and every bud produces a perfect flower. We strongly recommend it as being absolutely 100 per cent perfect in every way, both as to type, quality and productiveness. Coming in, as it does before Waite and the other bronzes, it proved most remunerative, as it was ready to cut October 8th in the greenhouse.

Price: 50c each, \$2.00 per dozen, \$15.00 per 100

INDIANOLA

Described by the introducer, as an "autumn foliage bronze." A variety blooming late in October, and one of the finest of the early bronzes.

JUSTRITE

An early Chieftain flowering three weeks earlier than that variety, but much larger and better in color, flowering October 15th. Good stiff stem and foliage.

LUSTRE

A beautiful shade of lavender pink which should be planted early in June for best results. Splendid stem and foliage. Flowers October 8th from bud taken August 25th. Height, 4 feet.

MISTLETOE

Blush white, of strong, upright growth, flowering in December. A splendid variety for commercial work.

MONUMENT

Pure white and one of the best Chrysanthemums for shipping.

MRS. A. M. CALKINS

An improved Golden Chadwick but much brighter color and more globular in form. A very strong grower with good stiff stems, flowering for Thanksgiving.

OCONTO

White, fine, large blooms on very strong stems; largely grown for its period, which is early midseason.

OCTOBER FROST

Blooms in early October and is the largest commercial white of its date.

OCTOBER ROSE

Large incurved pink, coming into flower October 15th. One of the finest of the early pinks.

PINK MISTLETOE

A late pink variety; sport from Mistletoe. 5 feet high.

ROSE CHOCHARD

A very early pink variety coming into flower early in October. A great improvement on Chieftain in every way. Take bud August 15th.

ROSE GLORY

Bright lavender pink, blooming October 15th to 20th. Splendid stem and foliage. Height, 5 feet, from early June planting. Take terminal bud for best color.

SILVER SHEEN

A pure white Chrysanthemum coming into flower about October 20th. An incurved variety with marvelous keeping qualities.

SMITH'S ENCHANTRESS

Bright rosy pink, surpassing all other commercial pink varieties introduced to date. Height, 4 feet.

SMITH'S PEERLESS

A creamy white variety for Thanksgiving or later. Height, 3½ feet.

SNOW WHITE

The best early midseason white, with fine stem and foliage. Blooms October 20th to 25th. Terminal bud.

SUNGLOW

A bright yellow like Major Bonaffon, flowering October 25th.

SUNGOLD

Very fine late yellow variety for Thanksgiving and later.

**ROSE CHOCHARD****UNAKA**

The long sought early October pink Chrysanthemum. A broad petaled Japanese incurved of great depth and size for so early a variety.

WHITE CHIEF

A splendid, incurved white of fine form and wonderful substance. Blooms October 18th from terminal bud. Height, 4 feet from early June planting.

WHITE CHIEFTAIN

Pure white sport of the variety Chieftain; duplicate of the parent in all respects save color, which is a pure white.

WHITE SEIDEWITZ

White sport of popular Seidewitz, resembling it in every respect except color, which is a pure white. One of the best varieties for Christmas blooming.

YELLOW EARLY FROST

The yellow companion for Early Frost blooming in early October. One of the finest commercial yellows.

Price: 50c each, \$2.00 per dozen, \$15.00 per 100

Standard Anemone Chrysanthemums

Very individual and showy in their different colors are the Japanese Anemone Chrysanthemums. They are very distinct as to type with their tufted centers, a charming contrast with the surrounding broader petals.

Price: 50c per plant, \$3.00 per dozen, \$20.00 per 100

BETTY ROSE

Beautiful shade of light dazzling pink with pinkish yellow cushion. Large flowering Anemone type, four to five rows of ray petals with high rounding cushion. Medium size, healthy, glossy green foliage. Stem, 24 to 28 inches high, very rigid, sprays are well divided. Matures October 25th to November 1st. This is a seedling of Graf von Oriola, and is much superior to its parent in every way. Makes a very large flower if disbudded.

BLANCHE

An improved form of Garza. A very attractive flower of splendid habit.

BUDDY

A dwarf Anemone Pompon, very attractive color of yellow and bronze. The flower droops down in a very peculiar manner showing the small disc center to the best advantage.

BUFF QUEEN

A large Anemone flower of bronzy buff, flowering November 1st.

CADET

A very fine bronze Anemone that has proven very valuable wherever grown.

CAPTIVATION

A beautiful, large flowered Anemone. When disbudded to one or two stems to a plant, it produces marvelous flowers. The growth is very strong and robust and the flower has exceptional substance for an Anemone variety. The color is a brilliant mahogany red. The cushion is very large and well placed. The tips of the petals are tinged with gold, making a most attractive combination. This variety has been distributed to a limited extent, but the past exhibition season has emphasized its great value to the grower.

COED

A clear pink with a tinge of yellow at center, $3\frac{1}{2}$ inches in diameter, 3 feet high, flowering about November 10th.

EUGENE LANGAULET

Deep golden yellow. Most popular variety in its color in the cut flower market.

GOLDEN LIDA THOMAS

Rather tall, deep golden yellow flowers; very valuable on account of its late blooming habit. Can be kept for Christmas if desired.

GRAF VON ORIOLA

Strongest grower of the set; color pure rose pink; tubular petals in center tipped gold; ends of the outer petals incurve slightly, making a bold and striking appearance; very bright foliage.

GRAF VON FLEMING

This is a charming variety; color of the purest pale lavender, the outer petals are tubular until they reach the edges, where they open and droop back.

HEARTS OF GOLD

Deep canary yellow, cushion golden yellow, large flowering Anemone, about 4 inches across. Dwarf, about 16 inches high, very rigid, requiring no staking. Medium size, very healthy, glossy green foliage. Matures November 25th to 30th.



CAPTIVATION

STANDARD ANEMONE CHRYSANTHEMUMS—*Continued***INNOCENCIA**

Outer petals of pure white; central petals most beautifully flushed pale pink; edges of the tubular petals in center of light yellow.

JUNO

Deep lilac shading to white; the center head being loose and graceful and of a deeper shade than the outer petals; a magnificent variety in its color.

MADAME LUNT

Milk white with rich, creamy yellow center; a great improvement over existing sorts, and the very earliest white Anemone to come into flower. Wonderful foliage, very clean grower, and stiff stems.

MARIAN SHILLABER

Deep primrose yellow with deeper bronzy yellow tufted center. Most easily described as "Jonquil" yellow.

MISS HELENE BORMAN

Terra-cotta bronze, with loose crested center of pale buff, the tips of each of the crested petals are split, showing the terra-cotta shadings like the outer petals.

MRS. H. J. BALLAGH

An even shade of Cattleya pink with straw yellow cushion. A medium sized Anemone. Very healthy light green foliage of medium size. Stem dwarf and very rigid, grows about 18 inches high and seldom requires staking. Matures October 20th to 25th. A seedling of Graf von Oriola and Izola. A novel color combination that is bound to prove popular.

MRS. FRANK J. TANBER

Blush white with pale yellow center and a deep chocolate spot in the center disk. A remarkable grower.

MRS. ALFRED G. WILSON

A glistening pure white Anemone with pale yellow centers. As grown and exhibited by the originator, it has been the sensation of several flower shows. The growth is strong and robust, and the variety is a great improvement in every way on "Blanche," which to date has been one of our most popular white Anemone varieties. An aristocrat that should be grown by every Chrysanthemum enthusiast.

NORMA

A large flowering show Anemone. Color a delicate pink with bronze yellow cushion. Matures November 20th to 25th.

**RED BIRD**

Deep ruby red with green, golden crested center; when slightly disbudded and grown in sprays this makes a magnificent variety. Most unusual color combination in this type.

ROSE ROYAL

A violet rose petal with tufted yellow center, maturing November 15th.

SPRING HILL

Blush white with yellow Anemone center. This variety has excellent substance and petalage. The stem is very rigid and particularly valuable on this account both for cut flowers and pot plants.

SURPRISE

Brilliant rose pink; one of the largest and very finest in this section.

TITIAN BEAUTY

Color, deep rich bronze, shading in the center to scarlet. One of the most striking of the collection; outer petals reflex showing the center to advantage. Strong growth, with heavy dark foliage.

TRIUMPH

A bronzy yellow Anemone with long golden bronze outer petals and large, bright yellow tufted center.

Price: 50c per plant, \$3.00 per dozen, \$20.00 per 100

Address all Correspondence to Totty's, Madison, N. J.

Feathery, Spidery and Thread-like Varieties

We imported the following varieties from Japan years ago and are the only concern in the country listing this type. Where one wishes late flowers and has a conservatory or greenhouse, we recommend that just a few of the following varieties be grown, and we know they will surprise and please the grower.

Price: 50c per plant, \$3.00 per dozen, \$20.00 per 100



SAM CASWELL

SAM CASWELL

Somewhat resembles White Thread except that it is larger and the end of each petal is divided into three points; the color is a brilliant rose pink and a spray of this variety is a pleasing and attractive sight. Feathery type.

THE DEAN

A bridal white, feathery variety which makes a very charming spray when grown naturally without any disbudding. The narrow quilled petals are very irregular on the flower and the pale beryl green curled center is a charming contrast to the intense white of the flower.

WHITE MRS. FILKINS

A pure white 'Mum, producing many flowers on a plant. Nice stiff stems, excellent for cut flower work and very novel in petalage.

WHITE THREAD

A beautiful and interesting variety resembling nothing so much as a quantity of short white threads growing on a stem. In contrast with large varieties in any exhibition it always calls forth great interest. Thread-like type.

WHITE WISTERIA

The creamy white sport of Fugi, very narrow petals; fine grower; a delightful variety.

AMATERASU (The Sun Goddess)

Heavy quilled petals which follow no set design but twist and curl like a very informal Cactus Dahlia. Color is yellow as the name implies.

BENTEN (Goddess of Beauty)

Quilled petals, standing straight out from the center; color green gold at center with blood red tips; no Chrysanthemum introduced to date has the peculiar shadings found in Benten.

FUGI (THE WISTERIA)

The largest of the entire set; pale lavender in color with very narrow petals hanging down 8 to 10 inches in length. Very refined type. Splendid foliage and stem.

JIUJITSU

This 'Mum reminds one of the old-fashioned peppermint sticks, inasmuch as half the petal is white and the other half deep pink. The petals alternating make this a most fascinating variety. Spidery type.

PINK BEAUTY

A deep, pinkish lavender shading to pale lavender at the tips of the petals. Greenish gold in the center and a very beautiful Chrysanthemum which can be recommended as entirely hardy.



WHITE THREAD

Pot Plants, Caps and Decorative Varieties



The following varieties are listed separately for the convenience of the buyer, and are all particularly adapted for pot plant work. These are the kinds usually grown for the wholesale markets in large quantities. They are often handled very satisfactorily by being planted out in the open ground in May, kept pinched into shape and potted September 1st.

PURPLE CAP

Bright purple sport of Caprice.

WELLINGTON WACK

Color soft primrose yellow, medium in size, with neat, reflexed petals. In our many years of Chrysanthemum growing and distribution, we have never had anything quite as fine in the Decorative Chrysanthemums.

WHITE CAP

Pure white sport of Caprice.

YELLOW CAP

Brilliant yellow sport of Caprice.

BUTLER'S CAPRICE

Deep pink Sport of Caprice du Printemps.

CAPRICE DU PRINTEMPS

This is the rose pink sport of Caprice.

CRIMSON SOURCE D'OR

Crimson sport of Source d'Or, the showiest variety of all the decorative types.

KATHLEEN THOMPSON

The crimson sport of Caprice.

LILAC CAP

Deep lilac sport of Caprice.

LIZZIE ADCOCK

Deep yellow sport of Source d'Or. Precisely like the parent in every respect as to growth and culture.

SOURCE D'OR

Sometimes called "Golden Feather," a wonderful variety when grown in sprays or as a pot plant. Deep reddish bronze.



SOURCE D'OR

Price: 50c per plant, \$3.00 per dozen, \$20.00 per 100

Hardy Garden Section

The varieties that follow are all perfectly hardy, providing they are grown in a section that is not too wet. If the stock plants are water-soaked all winter, or frozen up in cakes of ice, they will not survive, but given congenial growing conditions and a slight protection of dry leaves with pine branches over them to prevent the leaves blowing away, they will come through without any trouble. Then in the spring, after they commence to grow, they should be divided so just one shoot will remain to make the future plant. While the first frost will blast the flowers that are developed at the time, it will not injure the unopened buds, and the outdoor 'Mums can be enjoyed to their fullest extent all through the lovely "Indian Summer" weather.

Early Flowering Chrysanthemums

The cultivation of these 'Mums is simple: Plant them in a rich, well-drained piece of ground, setting out the plants a foot apart and pinching them once or twice during the months of May or June. They will branch out and make beautiful bushes and give the cultivator more return for the labor expended than any plant in the garden. There is a place for this type of 'Mums in every garden in America, whether one has greenhouses, frames, or grows them in the open garden. Some growers who have grown these as pot plants have had great success with the same and we can recommend them highly for that purpose.

Price: 50c per plant, \$3.00 per dozen, \$20.00 per 100



CRANFORDIA

A. BARHAM

A beautiful orange bronze and the first variety of this color to come into flower. Shows up wonderfully well under light when used as a decoration.

CANDIDA

This is the variety that is grown by the million in Europe, under the name of "Sanctity," etc. The color is absolutely pure white and when grown without being disbudded produces masses of pure white flowers, which are wonderfully effective.

CHAS. JOLLY

Bright, rosy pink, splendid variety and popular with everyone.

CRANFORDIA

In this variety we have an early flowering 'Mum that covers every possible point; perfect in flower and stem; foliage up to the flower and every plant will carry twelve to twenty beautifully finished flowers. Color deep bronzy yellow.

FIRELIGHT

Brilliant carmine, shaded with scarlet. In perfect condition to cut October 1st, either outdoors or under glass. The earliest and best thing in its color.

GLORY OF SEVEN OAKS

This is a variety that is used very much to grow into specimen plants. The color is a very beautiful golden orange. Quite a dwarf grower, but a very good doer.

LUCIFER

Shaggy flowers of deep ox-blood red, of great depth and brilliance.

NORMANDIE

Creamy white, magnificent variety. The earliest and perhaps the best.

PETITE JEAN

On the same order as Perle Chatillonnaise, but comes into flower about a week later. Color, pure white with a light yellow center.

YELLOW FROST

The bright yellow variety of the ever popular Early Frost, coming into flower early in the season.

YELLOW NORMANDIE

Clear, bronzy yellow sport of Normandie. Earliest yellow to come into flower.

Single Chrysanthemums Standard Varieties

Price: 50c per plant, \$3.00 per dozen, \$20.00 per 100, except where noted

ALICE HOWELL

A rich shade of orange yellow in color. By far the most attractive of any of the yellow single varieties.

ALOMA

A beautiful bronze Single, dwarf and robust in habit and a very welcome addition to the list of midseason varieties of this character.

BESSE LA ROCHE

Color, when first opening, Brazil red, but as the flower ages it shades into a deep crimson bronze with large yellow zone in the center.

BRONZE BUCKINGHAM

When we say this variety is a duplicate of its parent in every respect except color, little more description is necessary, for Buckingham is one of the best known Singles. Color is a cheerful glowing bronze.

BRONZE MOLLY

Color clear tawny yellow. A Single that is enormous in size, both as to flower and plant. The plant, under favorable conditions, will attain a height of 6 feet, clothed from top to bottom with luxuriant foliage.

CAROLINE ROBBINS

When first opening the flowers are a deep mallow pink and gradually develop into lilac rose. The very broad petals of this flower much resemble a double Cosmos.

CYRIL KOCH

A flame bronze, very rich colored variety of exceptional habit and growth, running 4 to 5 feet high in the bench. This variety has been one of the most admired of our entire collection.

DR. MILLS

A very handsome canary yellow variety coming into flower November 15th and later, and will be very popular on that account. The growth is stiff and erect and every flower stands out most attractively on the stem.



ESME WATERS

Color deep rich yellow and a variety that will be very valuable as a cut flower, as it comes into flower November 15th and later. Very long foot stalks which makes disbudding unnecessary.

GODFREY'S TRIUMPH

This is named by one of the finest cultivators of Single Chrysanthemums in Europe. In shape it is exquisitely cupped like a Waterlily and the flower is of a bright buttercup yellow.

GOLDEN MENSA

Identical with Mensa in every way except color, which is a bright golden yellow.

GRETCHEN PIPER

One of the most admired of the varieties at the flower shows for the last two years. The color is a deep glowing yellow and the flower light and graceful.

Price: 50c. per plant, \$3.00 per dozen, \$20.00 per 100, except where noted

SINGLE CHRYSANTHEMUMS, STANDARD VARIETIES—*Continued***GOLDEN SUN**

One of the most brilliant yellows we have ever seen. Petals very stiff and the several rows of petals on the flowers make it ideal for shipping. Growth particularly strong and vigorous, with luxuriant foliage.

IDA CATHERINE SKIFF

Most quickly described as a greatly improved Yvonne; color is a brilliant bronzy amber, flowers large and well placed on the stem, needing no disbudding owing to the length of the foot stalk; an invaluable variety for cut flower work.

ISABEL FELTON

Classed in Europe as the very finest yellow; with us the growth is rather tall and the flower has considerably more color than Golden Mensa.

JULIA QUINLAN

A gorgeous combination of old rose and bronze and one of the finest varieties we have had for years. The individual stalks are 6 inches or more in length, rendering disbudding unnecessary, giving the flowers a distinct and massive appearance.

JEANNE SHELLY ADAMS

A deep rose pink with white zone around the center. The flowers well produced in heavy clusters and the rigid stem holds them up erect and sturdy.

JEAN HART

One of the daintiest Single Chrysanthemums ever distributed. The color is a beautiful deep yellow. It has the most graceful habits of any Chrysanthemum grown, and for exhibition purposes is unsurpassed.

JOYCE STROWLGER

A bronzy salmon pink of wonderful substance and texture. It is impossible to describe the true beauty of this particular variety.

KITTY RICHES

For years we have been trying to produce a pink single that could be brought into the market early and in this variety we have achieved our ideal. The color is a dainty pink, much like Mrs. Buckingham, and sells on sight.

LILY NEVILLE

White, of great substance and size, with solid flowers nicely arranged on the stems. This variety is also adapted for pot plants as well as cut flowers, since it is a dwarf, stiff grower.

LINA EARP

A brilliant yellow overlaid with bronze coming into flower the first week in November. The petals have splendid texture and are cupped on the style of the Waterlily. The growth is particularly handsome, being dwarf and very strong and robust.

LOUIS SPEARS

Brilliant chestnut crimson; plant a very strong grower, needs to be disbudded as the flowers are rather closely placed on the stem.

MARGARET WAITE

A deep pink sport of the well-known late pink Single, Mrs. E. D. Godfrey, differing from the parent in having extra petals, and a much deeper and more pleasing color.

MARGARET W. WANNER

Cadmium orange, suffused deep amber bronze, being a seedling of Buckingham and retaining all its hardy characteristics with the added advantage of an additional row of petals.

MAYOR J. W. SMITH

A very fine late deep rose pink Single with very stiff, straight petals. A remarkable shipper and a strong, clean, perfect grower.

Price: 50c per plant, \$3.00 per dozen, \$20.00 per 100

SINGLE CHRYSANTHEMUMS—Continued

MELBA

A brilliant bronzy red of exceptional merit. The foliage is magnificent, the growth strong and sturdy. One of the most satisfactory varieties seen in many years.

MENSA

Purest white. This is a splendid variety.

MISS ISABELLE

A sport of Mrs. E. D. Godfrey, and comes to maturity for Thanksgiving Day. Bronze color with a silvery reverse to the petals.

MISS MOLLY

Color is a brilliant bronzy amber, flowers large and well placed on the stem needing no disbudding.

MOLLY HUNT

A glistening white Single with broad, flat petals in striking contrast to its bright yellow center. Free flowering and a variety that will be warmly welcomed as it is the finest white in many years.

MRS. W. E. BUCKINGHAM

Midseason pink, has proved itself one of the best varieties for cutting or market purposes.

MRS. E. D. GODFREY

Light pink; very finest variety for Thanksgiving market; very strong grower and more largely grown than any other Single.

MRS. EDWARD HARDING

A charming new shade, best described as bright claret rose with a warm golden center. Best of all it has a very unusual sweet, spicy fragrance and is a table decoration par excellence, having splendid keeping qualities as a cut flower.

MRS. C. S. MCKINNEY

Bright buttercup yellow. A superb variety in all respects. This has several rows of petals and a deep green center—a charming contrast. Stiff stem and nice foliage.

MRS. ALBERT PHILLIPS

Deep lavender in color, one of the earliest of the Singles to develop this year; fully open October 5th. When first opening the contrasting color is a lovely cream, charming and beautiful.

MRS. JOHN A. STEWART, JR.

A lovely bronze with yellow zone immediately around the center disc; just the color that associates itself with Autumn foliage.

MURRAY HILL BEAUTY

A sport from "Mrs. E. D. Godfrey," by far the finest of the late blooming Single varieties that we have ever introduced. The color is a most attractive old rose and the season of blooming which is from Thanksgiving to Christmas, makes it doubly so to people who are looking for late blooming Chrysanthemums.

OLD GOLD

A splendid variety commencing to flower November 15th to 30th; in every respect a first-class type. The color is pure, clear old gold, and the foliage is so deeply cut as to resemble a holly leaf. The ensemble is most attractive. The stem is very sturdy and robust and, taken altogether, "Old Gold" is a most desirable variety.

RICH RED

This variety was universally admired in our grounds under the name of "Rich Red." It stood with impunity several heavy freezes, and was still flowering profusely, after every other variety was blackened and dead.

ROSE F. RICCI

A lovely clear pink with very brilliant golden center. The petals have a frilled effect that is very beautiful and the individual flowers are gracefully arranged and are divided on the stem.

ROUPEL BEAUTY

True American Beauty in color, very large flowers with bright yellow center; very attractive flower and novel color.

SUNLIGHT

A very beautiful clear yellow with the petals nicely arranged around the open center.

WINIFRED PERRY

The flowers of this variety are very valuable and beautiful. The color is a pale bronze, shading to salmon pink. Does best when disbudded and it is named in honor of one of the most popular flower painters in London.



Price: 50c per plant, \$3.00 per dozen, \$25.00 per 100

Large Flowering Pompons

For cut flower work, this type of Chrysanthemum is unexcelled, since it produces long sprays of flowers with the blooms gracefully arranged on the stem. This improved type of Pompon has become very popular within the last five years, and they are now preferred by many people to the smaller or button types.

Price: 50c per plant, \$3.00 per dozen, \$20.00 per 100, except where noted.

ADELAIDE

A splendid, deep, rich mahogany, one of the earliest to develop, being ready to cut by October 10th. Strong, healthy grower and a desirable variety in every way. About 4 feet high when well grown.

ANNA KUHN

Deep old rose with lighter shadings on tips of petals, the whole flower giving the suggestion of clear Indian red when growing on the plant.

ANNA L. MORAN

Of all the many Chrysanthemums we have distributed the last twenty years this is our favorite in Pompon section. The color is splendid—a brilliant flame scarlet, so vivid as to be easily the most striking flower in the entire collection.

BRONZE DOTY

Deep terra cotta bronze, like both of the foregoing varieties of the Doty family, it is also of splendid habit, stiff in stem and free flowering. The deep terra cotta red is enhanced considerably by the old-gold shadings throughout the petals.



ADELAIDE

BRONZE QUEEN

Almost identical in color with Anna L. Moran but two weeks later in blooming; a brilliant flame red, deepening in color as the flower ages.

CAPTAIN COOK

Taller in growth than the average Pompon, running the same as Lillian Doty. First Pompon to open and the color is a lovely shade of rose pink far ahead of anything else in its color at the time of blooming.

DREAM

A very handsome late Pompon and a delightful acquisition to the late varieties. The color is Enchantress pink. Disbudding is unnecessary with this variety as every flower stands well out and shows itself to the best advantage.

EARLIEST OF ALL

This variety is valuable on account of its earliness, being the first Pompon it is possible to cut. It is fully developed the third week in September and in color is a clear salmon pink. The plant is dwarf in growth but very robust.

FIREBIRD

Very bright red Pompon of strong upright growth, flowering in late October.



ANNA L. MORAN

Price: 50c per plant, \$3.00 per dozen, \$20.00 per 100, except where noted

FRANCES HUCKVALE

Gardenia white, with a creamy shaded center. Far in advance of Queen of the Whites or any other Pompon.

GOLDEN STAR

A very handsome variety, dwarf, erect habit, with stiff stems. The petals are narrow and beautifully whorled, giving a flower of deep yellow and an effect of grace and charm not often seen.

IRMALINDA

Color, old rose with silvery sheen. A very fine grower with flowers about $1\frac{3}{4}$ inches in diameter. It comes into flower around October 25th.

IRENE

A pure white early Pompon flowering about October 18th. A very fine upright grower.



ANNA KUHN (Page 21)

H. R. H.

Clear lavender of the Doty type, but superior in the general make-up of the flower. Growth stocky and robust. If the center bud is removed from the shoot it makes a marvelous spray without any other disbudding.

JULIA DE WITT

Bright bronzy amber with deeper shadings. A dainty and exquisite variety.

LUGANO

A brilliant lemon yellow Pompon, shading to golden yellow. A most productive variety that can be grown either disbudded or in sprays, and when disbudded the flowers measure 3 to $3\frac{1}{2}$ inches across. Very healthy, small foliage, and very rigid stems. 28 to 30 inches high. Matures November 1st.

MISS HELEN TAIT

A particularly vigorous pink, almost too large for a Pompon, but makes a wonderful show in the garden. Flowers very resistant to weather conditions and will keep outdoors in good condition for weeks.



MRS. J. WILLIS MARTIN (Page 23)

MARY ANN

Light pink in color, a great favorite with the visitors to our establishment this Fall. Excellent in foliage and stem.

MRS. FRANCIS H. BERGEN

Creamy white, with center of rosy pink, shading to lighter pink in the outer edges. As the flower ages it changes to a charming pale lavender.

MRS. H. HARRISON

One of the first of the Pompons to come in flower, being in excellent condition to cut outdoors the middle of October. The color of this variety indoors is a dainty, exquisite blush.



MRS. H. HARRISON

Price: 50c per plant, \$3.00 per dozen, \$20.00 per 100, except where noted

LARGE FLOWERING POMPONS—Continued



LUGANO (Page 22)

MRS. J. WILLIS MARTIN

Crushed strawberry in color. The only variety we have in this shade of outdoor Chrysanthemums. One of the most beautiful varieties we have ever introduced, and on account of its exquisite shade is very popular.

MRS. HENRY F. VINCENT

An exquisite shade of fawn and bronze with salmon pink shadings. This variety also is very strong in growth and the foliage is perfect in every way.



DREAM (Page 21)

MRS. NELLIE KLERIS

This variety is an improved Lillian Doty, but the color is more evenly diffused over the flower. The blooms are equally as large as Lillian Doty, but better divided on the stems.

MRS. G. W. WICKERSHAM

Large, snow white flowers on long stems that are splendid for cut flower work.

NELMA PUTNAM

The outer petals of this variety are rose pink shading to pinkish bronze in the center and the very center of the flower is creamy yellow. The color effect is very pretty.

RED DOTY

Wine red, with a silvery reverse on underside of petals and showing up distinctly in the short, crisp, center petals. A duplicate of Doty in form and habit and three times as large as that favorite variety.

RODELL

An early flowering Pompon, which can be depended on to come in for October 20th. A fine clear yellow in color.



DELPHINE DODGE (Page 24)

SHAKER LADY

Bright Tyrian pink and one of the best we have introduced. Strong, healthy growth with the flowers well placed, showing up the individual flowers to the best advantage.

VERA VICTORIA

A splendid Pompon of the very largest size. Color brilliant glowing bronzy yellow. Growth particularly strong and healthy. A variety from the Department of Agriculture.

WHITE POPCORN

Lovely ball of pure white, ideal in growth, with very stiff stems. Flowers are well divided on the spray. One of the best cut flower varieties.

Price: 50c per plant, \$3.00 per dozen, \$20.00 per 100

Hardy Pompon Chrysanthemums

Standard Sorts

Frequently known as the Button Type

These are the latest flowering Chrysanthemums of all to bloom and many times their flowering heads are seen above the first snows. This type will be found in practically all the old-fashioned gardens. The best known of the many types of Chrysanthemums.

Price: 50c per plant, \$3.00 per dozen, \$20.00 per 100

DELPHINE DODGE

Rose pink variety changing to a creamy white, shaded lavender as flower ages.

GILDA

Bright orange, flowering October 25th, very free flowering, with dwarf, rigid growth.

GOLDEN CLIMAX

Orange yellow. In our opinion the finest of the many yellows now in cultivation, possessing every necessary qualification. Truly named, as it does not seem possible to improve on this variety.

GOLD COIN

A large flowering Pompon of brilliant yellow, flowering for Thanksgiving. A very free flowering variety.

J. W. JR.

A light pink, tall growing variety. This handsome, large flower is of pale lavender with deeper shadings on the outer edges. A very handsome, sturdy variety.

NEW YORK

Bronze seedling from Hilda Canning. Flowers November 1st. One of the best in bronze.



BABY

Everybody's favorite. The smallest yellow variety grown.

BECKY McLANE

Small bronze late flowering Pompon in full flower for Thanksgiving or can be held later if desired.

CLARA JAMESON

Lovely combination of bronze and scarlet. One of the showiest varieties in our garden this past Fall; keeps blooming profusely even after heavy frost.

CHRISTMAS GOLD

This variety is a small golden yellow and does not flower until December, making a very valuable late flowering sort.

CORA BUHL

Resembles Golden Climax in growth and form of flowers. The deepest of all yellow Pompons. 3½ feet high. In full flower October 25th.

DONALD

Light pink, very fine grower, large and sturdy, flowering outdoors in a sheltered situation up to Thanksgiving.



LILLIAN DOTY

It is much the finest pink in the large flowered section of the entire Pompon family. The plant is a tremendous grower, producing beautiful sprays of clear, light pink flowers.

MARY PICKFORD

One of perfect form, petals reflex at maturity nearly to stem, forming a ball of pure white.

MRS. FRANK WILCOX
(Mrs. Frank Beu)

Color reddish orange, splendid variety for Thanksgiving use.

NOVEMBER GOLD

Very large flowering, bright golden yellow, flowering the early part of November.

NUGGETS

A lovely clear, shiny yellow, ideal either when grown as a pot plant or for cutting in graceful sprays. November 1st to 15th.

PAULINE WILCOX

Bronze with red and gold shadings running out to a lighter color at the tips of the petals. Stem very stiff and the flowers are well divided on the cluster.

PETITE

Dwarf yellow of Baby Pompon type, ready to cut November 1st and well worth growing along in the list of newer Pompons.

ROWENNA

Light bronze Pompon, splendid for Thanksgiving.

SNOWBANK

As its name implies, a snow white Pompon which when grown en masse without being disbudded looks like a veritable bank of snow.

SNOWBIRD

Beautiful white Pompon with creamy yellow edge. Foliage frost resistant.

UVALDA

Pure glistening white Pompon, in full flower October 15th. A fine early flowering sort.



VARSITY

Yellow Button Pompon, flowering in early November.

WESTERN BEAUTY

A deep rose pink, rather late for the shows, but one of the best Pompons ever introduced.

WHITE DOTY

A sport of the popular variety, Lillian Doty and a duplicate of the parent in every way except color, which is pure milk white.

YELLOW DOTY

One of the finest yellows in the large flowering section of the Pompon. A wonderful grower with flowering stems 4 feet long and a magnificent bright yellow in color.

ZENOBIA

Pure yellow. Comes into flower first of all and popular on this account.

Price: 50c per plant, \$3.00 per dozen, \$20.00 per 100

CLUB LECTURES

For all Clubs interested in gardening, we are prepared to furnish a speaker on the subjects listed below:

Spring in the Perennial Gardens
Delphiniums

Hardy Garden Roses
Chrysanthemums

Fall Planting and Winter Covering

Whenever blooming season permits we will furnish samples of the flower under discussion and give practical demonstrations with plants. The speaker will be glad to answer individual questions at the close of the talk.

Arrangement for lectures must be made with the Madison, N. J. Office one month in advance of the date of same.

Types of Hardy Chrysanthemums

Singles—Early Flowering—Pompons

For
A
Delightful
Fall
Garden



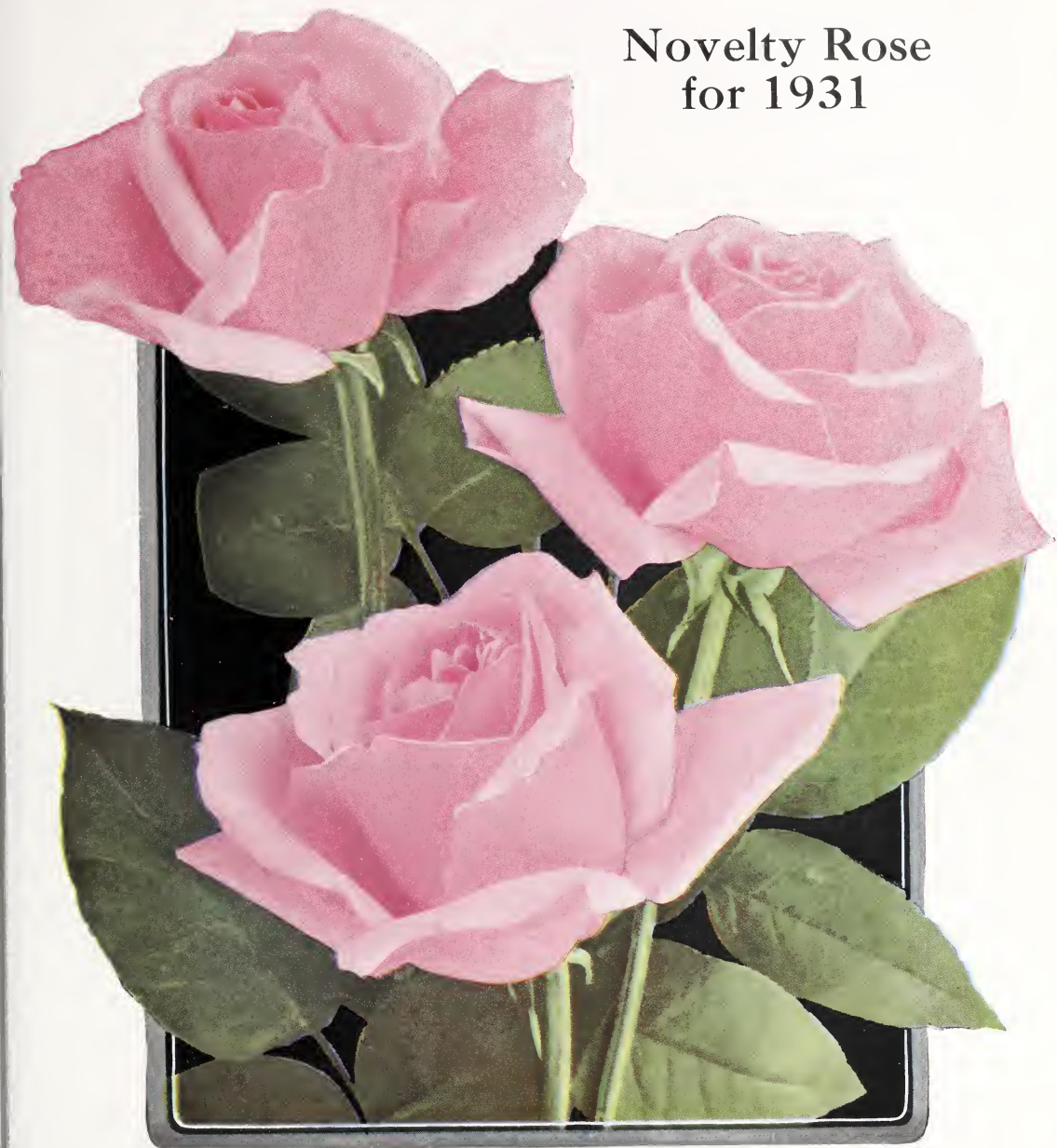
This
Offer
Is
Unsur-
passed

The collection is specially prepared for the benefit of those customers who have never grown Hardy Chrysanthemums, and therefore are not familiar enough with the different types to know definitely what to order. This assortment comprises an equal number of each type; all entirely satisfactory and in all shades of color, and we will send our own selection of

100 Assorted Plants, \$15.00

If a customer desires some particular color—or a greater quantity of some one color, and will state this when ordering, we will endeavor to meet their wishes, insofar as it is possible for us to do so.

Novelty Rose for 1931



MRS. PAUL M. PIERSON

A Premier sport retaining all the good qualities of its parent. Color—soft pink with inner side of petal slightly lighter giving a pleasing effect. Large flowers on long stiff stems with glossy, abundant foliage. Splendid keeper and winner of gold medals at International Flower Show, New York American Rose Society, 1930.

GRAFTED STOCK ONLY

Size	Per plant	Per doz.	Per 100
2½ inch	\$1.00	\$10.00	\$60.00
3 inch	1.20	12.00	70.00
4 inch	1.30	14.00	80.00

Newer Rose Introductions

GRAFTED STOCK ONLY

Size	Per plant	Per doz.	Per 100
2½ inch	\$0.60	\$6.50	\$50.00
3 inch75	7.50	60.00
4 inch	1.20	12.00	70.00

LUM'S DOUBLE WHITE

A rejuvenation of the old Double White Killarney, showing an improvement in growth, a larger flower, and a much purer, whiter color. When grown in a house with the old Double White, the superiority of this sport is most apparent. The growth is much longer and the general appearance of the plant better in every way, than the original variety.

PRESIDENT HERBERT HOOVER

“President Hoover” is a glorious Rose, wonderfully free in the easy manner in which it grows and charming in its color arrangement, which is a splendid combination of cerise pink, flame, scarlet and yellow, and this combination gives the most dazzling color effect ever seen in any Rose. It is one of the most cheerful Roses imaginable. The flower is large and the bud beautifully pointed. The petals are broad and thick, retaining this characteristic days after the flowers are open. It is a splendid keeper, much on the order of “Pernet” in this respect.

The exquisite fragrance of this Rose is one of its strongest points, and after twenty-five years of introducing new Roses, we have never had a Rose to compare with it in fragrance. It makes 3 feet breaks, without pinching and everyone will be delighted with its growing habits.

SOUVENIR DE CLAUDIUS PERNET

Budded Stock Only

Price: \$1.00 each per plant, \$11.00 per dozen, \$90.00 per 100

The most popular forcing yellow Rose to date. We are proud of the wonderful record this Rose has made since we introduced it. The color is a brilliant clear yellow, which does not fade at any time, and the beautiful holly like green foliage makes a charming contrast for this beautiful flower.

Specially fine stock budded on Odorata, which has been found to be the best stock on which to grow this variety.



E. G. HILL

Standard Varieties of Roses for Forcing

Size	GRAFTED		
	Per plant	Per doz.	Per 100
2¼ inch.....	\$0.50	\$5.00	\$40.00
3 inch.....	.60	6.50	50.00
4 inch.....	.75	7.50	60.00

AMERICAN BEAUTY

In response to a growing demand for this old time favorite, we can supply grafted stock this year of a very free flowering strain, that has been grown outdoors for many years, with the sole purpose of improving production.

BRIARCLIFF

A sport from Columbia, retaining all the good qualities of its parent, color more brilliant than Columbia, being a true rose pink without any shadings whatever. Long pointed bud and very fragrant. Every bud of this variety is 100 per cent perfect. Abundant dark green foliage and habit of plant very vigorous.

CECILE BRUNNER

Known under various names, such as Sweetheart, Mignon, etc., Is a dainty, miniature Rose. Light pink in color, and every greenhouse should have a few plants of this beautiful little Rose.

STANDARD VARIETIES OF ROSES FOR FORCING—Continued

E. G. HILL

An immense Rose, said to be the largest red forcing variety of true Hybrid Tea character yet produced. It is a cross between two selected red seedlings.

The flower is dazzling scarlet, shading to a deeper pure red as it develops, but never showing purple. It produces long stems naturally and the foliage develops freely and is of fine color. A great producer and an unusually good keeper, as was shown when it was up for exhibition. The bud is unsurpassed in beauty—except by the open flower, which is a wonder.

JOANNA HILL

The wonderful new yellow Rose pronounced by wholesalers and retailers, as well, to be the best yellow Rose yet introduced.

"Joanna Hill" is a seedling of Amelia Gude and Mme. Butterfly. The blooms are clear yellow, deepening at the center and hold their color under artificial light. It produces strong stems without pinching and can be grown at low cost and sold at a more reasonable price than Souv. de Claudius Pernet.

LADY MARGARET STEWART

The buds are long and pointed, and when the full double flower opens, the color is the most unique of any Rose ever introduced. In the bud state, it is a glowing scarlet, which as the flower develops, changes to a deep sunflower yellow, heavily veined and splashed orange scarlet. The fragrance is most pronounced in this particular Rose and its lovely orange fragrance is its most charming feature.

MATCHLESS

The deep, cerise sport of Premier. This is a much superior variety to Premier, as the flowers are larger and the color much finer than the original Premier. It retains its deep pink color during the short days in December and January, and is a splendid midwinter growing Rose.

MADAME BUTTERFLY

A glorified Ophelia. The individual bud is larger and the color tints of Ophelia are greatly intensified, making it a harmony of bright pink, apricot and gold.

PREMIER SUPREME

Deep rose pink, sport of Premier, with large, high centered flower. Very long in the bud. Dark leathery green, disease resistant foliage.

RAPTURE

A much improved sport of Mme. Butterfly as far ahead of Mme. Butterfly as Mme. Butterfly was of Ophelia. The color is an exquisite salmon shade, deeper than the very best Butterfly, with the same golden flush as the base of the petals. As a sport of Butterfly, Rapture shows all its good characteristics with a larger foliage and a much heavier growth.



RAPTURE

ROSE HILL

The finest sport of Columbia yet produced. In proof, it has more petals than Briarcliff. The bud is firmer in texture, consequently it is a fine shipper. Self pink of charming brilliance, which does not fade on the reverse of the petal; almost thornless. It will delight the commercial grower and will also prove a jewel in the hands of the average florist and the amateur.

TALISMAN

A seedling of Ophelia and Souv. de Claudius Pernet, originated by The Montgomery Company. "Like a choice, rare cameo, this new seedling Rose stands out in rich and distinctive relief against any background." Talisman is already so well known that it needs no further comment.

TEMPLAR

A clear, even shade of red and a color that stays even at all times. Very productive and fragrant and a fine Winter growing variety.

Prices on previous page

Novelty European Carnations

We are cataloguing this year, three varieties of British origin. After testing out the same under our climatic condition, we feel there is a distinct place for these varieties in the American market. Visitors to the English Shows have raved over the Carnations exhibited, and asked why they were unable to have these unusual colors, fragrance and long keeping qualities in our American varieties. In an endeavor to please our customers, we are distributing the following three varieties, which charmed American visitors to the European Shows:

Price: 50c each, \$5.00 per dozen, \$35.00 per 100



ZORRO

This is the flower, that is the favorite of Queen Mary. The color is a light heliotrope flushed pink at the base of the petal. The whole flower overlaid with a French gray finish. Some of the gorgeous court decorations have been worked out with this wonderful variety used in conjunction with Cattleya Orchids, and we recommend this variety to everyone interested in novel colors. Very free flowering, and a splendid grower.

CORAL GLOW

In color, a marvelous combination of terra-cotta flushed bronze, producing a decidedly oriental effect under artificial light. "Coral Glow" is a flower for the connoisseur, and on account of the distinctiveness and unusual coloring, it is found to be very popular. Very productive and the plants make very healthy growth.

LADY HINDLIP

A lovely flower of blush white ground penciled carmine red. The flower is an aristocrat with its clear cut smooth edged petals, and high full centers, giving it a most beautiful appearance.

Standard Carnations

Price: 50c each, \$4.00 per dozen, \$25.00 per 100



LADDIE

The color is a warm rose salmon pink; the flowers average $3\frac{1}{2}$ inches in diameter, when it is at the proper stage for cutting and develops to $4\frac{1}{2}$ inches in Winter.

RED LADDIE

Everyone knows the parent of this wonderful variety. If one wishes to grow a splendid Red Carnation, we strongly recommend Red Laddie for quality, size and color.

PRINCESS DAGMAR

Largest and finest Carnation ever produced in crimson, a wonderful keeper and one that we can recommend with confidence.

MATCHLESS

Well named the Matchless White. Blooms early and continuously, easy to handle, and very free. Flowers extra large and wonderfully fragrant.

MAINE SUNSHINE

This variety is a clear yellow seedling. Its chief point of superiority is its splendid vigorous habit. Most yellow Carnations introduced heretofore have been lamentably deficient in constitution and Maine Sunshine is very popular on account of its fine growing qualities.

ROYAL

French purple most attractive and unusual in color. Very fragrant and free growing, and to anyone looking for a novel color in Carnations we recommend this variety.

For any other varieties of Carnations, either Standard or Novelties, write us for prices.

Price: 50c per plant, \$4.00 per dozen, \$25.00 per 100

Address All Correspondence

TOTTYS

MADISON : : : NEW JERSEY

Tender Bedding and Greenhouse Plants

AGERATUM FRASERI

One of the most valuable acquisitions to the bedding plant line in recent years. It only grew about 8 or 10 inches high and was covered the entire Summer with immense trusses of flowers. The plants spread about 12 to 15 inches across. Being an early bloomer and dwarf, compact grower, it makes an excellent pot plant.

Price: 2¼-in. pots, 50c per plant, \$2.50 per dozen, \$15.00 per 100. Larger sizes on application

AMARYLLIS HYBRIDS

This flower is wonderfully popular, as shown by the exhibitions of the Department of Agriculture, year after year. The Show in Washington, D. C., in the early Spring, draws thousands of admirers of this splendid plant. We have a nice lot of flowering size bulbs to offer of the choicest selections of all colors from the American and European collections.

**Price: \$1.25 each, \$12.00 per dozen
\$90.00 per 100**

BUDDLEIA ASIATICA

This Buddleia differs from Variabilis and others of its type, in that it is not hardy and requires protection. It begins to bloom in December and continues to do so throughout the Winter season, if the plants are kept growing in a warm house. It produces long spikes of the most beautiful white flowers which have a delightful lilac fragrance.

Price: \$3.00 per dozen, \$20.00 per 100

FERNS (For Fern Dishes)

Assorted Ferns in all the best varieties:

Cyrtomium falcatum

Pteris mayi

P. cretica

P. albolineata

P. adiantoides, etc.

Price: 2¼-in. pot plants, \$1.50 per dozen, \$10.00 per 100

GERBERA (Jamesoni Hybrids)

Frequently known under the name of the Transvaal Daisy. These Hybrids give a variety of color, but the predominating color is a brilliant scarlet. Produces beautiful daisy like flowers about 4 inches across on stems about 15 to 18 inches long. It can be grown outdoors during the Summer and early in the Autumn lifted and potted and placed in a warm greenhouse, where it will bloom throughout the Winter months.

**Price: 75c per plant, \$7.50 per dozen
\$60.00 per 100**

LANTANAS

There is no Summer flowering plant that will give better results than Lantanas. They can be absolutely depended on to bloom regardless of weather conditions, and are always a magnificent show of color in the garden.

Delicatissima

Weeping, lilac lavender.

E. Bayard

Bright orange, red and yellow.

Iolando

Rich orange turning to red.

Protee

Old rose and golden yellow.

Radiation

Orange and red.

**Price: 50c each, \$2.00 per dozen
\$15.00 per 100**

LEMON VERBENA (*Aloysia citriodora*)

A well-known garden plant appreciated for the sweet, lemon scented foliage, which is extensively used to impart a sweet scent to bunches of flowers lacking in a scent of their own. It is also used in flavoring jellies.

**Price: 2¼-in. pots, \$1.50 per dozen
\$10.00 per 100**



LANTANAS

HELIOTROPE ROYAL FRAGRANCE

This Heliotrope introduced some years ago by us, has just about become the standard of America. Our sales increase by leaps and bounds every year, so much so, that we have had to discard other varieties in order to increase our propagation of this particular subject. It is dwarf and robust in habit, and the most fragrant Heliotrope that has ever been grown. It blooms from early June until frost, and as a bedding plant is unsurpassed.

The color is a deep rich violet blue, and the individual trusses of flowers are enormous, being 12 to 15 inches across. A bed of this variety is a solid mass of color from early in the season until frost, and there is absolutely no Heliotrope that can compare with it. This plant will not attain a height of over 10 inches, therefore, does not have the weedy habits of most Heliotrope.



HELIOTROPE CENTEFLEUR

Deep blue in color with conspicuous white eye. Our first introduction in the Heliotrope line and a very strong, vigorous grower. It is the most robust of all the varieties and will sometimes grow 2 feet in height in favorable locations.

HELIOTROPE ELIZABETH DENNISON

A clear Windsor blue in color with large individual trusses of flower growing about 15 inches high. Is also wonderfully fragrant. Won the Medal of Honor at the Panama Pacific Horticultural Exposition in 1915.

PRICES ON ABOVE VARIETIES

	Each	Per doz.	Per 100
2½ inch pots.....	\$0.30	\$3.00	\$20.00
3 inch pots.....	.40	4.00	30.00
4 inch pots.....	.50	6.00	40.00



STANDARD TREE HELIOTROPE

We have a limited number of Standard Heliotrope plants about 4½ feet to 5 feet high with immense trusses of bloom 8 to 10 inches across, which we offer this season. These are very charming subjects for a Rose or Hardy garden and they will bloom practically the entire Summer, in addition to being exceptionally fragrant at all times. We do not recommend these standard Heliotrope being planted out in the garden before June. If taken in the conservatory before frost they will continue to bloom during the Winter.

Price: \$5.00 per plant, \$50.00 per dozen

Coltness Gem Hybrids

Lovely new scarlet Dahlia, which is the most extensively grown bedding plant in the parks of the European capitols. We are glad now to be in a position to supply our customers who repeatedly ask, where they can procure this Dahlia.

Price: Tuber \$1.00 each, \$10.00 per dozen
Green plants Spring delivery 50c each, \$5.00 per dozen



MIGNON DAHLIAS

Mignon Dahlias

These are unsurpassed for bedding plants where quantities of flowers are required during the Summer months. These single flowered Dahlias attain a height of about 18 inches and begin to flower early in June and continue to do so until frost. We are unable to supply separate colors, but can supply them in an assortment containing white, yellow, pink, bronze and red. These should be set out about 18 inches apart early in June either in the border or in solid beds, just as preferred. Where one desires a great deal of color throughout the Summer months, we strongly suggest Mignon Dahlias be grown. Green plants only.

Price: 50c each, \$5.00 per dozen, \$35.00 per 100



Novelty Orchid Flowering Dahlias

Novelty Orchid Flowering Dahlias

On a trip to Europe about two years ago, our Mr. Totty saw for the first time, the new Orchid Flowering Dahlias, exhibited in a Show in London, and immediately made arrangements with the originator, Dobbie of Scotland, to purchase the entire American rights for the distribution of this type of Dahlia. These Dahlias were awarded the "Abol" Seventy-five Guinea Challenge Trophy, offered at the 1929 Edinburgh Show for "the exhibit demonstrating the greatest advancement, since the War, in any one family or kind of flower, vegetable, etc."



These Orchid Flowering Dahlias are bound to be immensely popular on account of their wonderful value for decorative purposes. Used as a cut flower on a dinner or luncheon table, or in vases around a room, their graceful airiness is most pronounced. They are of the easiest possible culture, if they are planted and allowed to grow naturally, and will produce wonderful bushy plants, two to three feet in height, literally covered with blossoms. Trimmed back three or four main stems, to a plant, and staked, larger sprays and better flowers will be produced. The graceful curve of the petal prompted the name "Orchid Flowering."

Our recent exhibit at the Atlantic City Show, which contained a great many of these Dahlias was awarded the First Prize, as the finest exhibit in the six hundred foot space.

Price: \$2.00 each, \$20.00 per dozen, \$150.00 per 100

The varieties we have to offer, are as follows:

BEAVER

Crimson maroon with light-tipped narrow florets and lighter center. 3 feet.

CHAMOIS

Lovely shade of chamois throughout with slight red tints, quite artistic. 3 feet.

CITRONELLA

Pretty canary yellow ground with crimson reverse. A charming flower. 3½ feet.

COMET

Light brown, ground with maroon reverse. 4 feet.

EVEREST

Pure white throughout, long graceful recurving florets, good size. 3 feet.

FAWN

A lovely fawn shade with reddish reverse, a ladies' color. 3 feet.

FIREFLY

Yellow ground with vermilion scarlet reverse, most attractive. 3 feet.

GOLDFINCH

Yellow ground mottled with red, crimson reverse, a charming flower. 4 feet.

LEOPARD

Yellowish ground with crimson reverse spotted with rose. 3 feet.

MAVIS

Rose ground with deep purple reverse spotted. 3 feet.

PEACH

Buff ground mottled with red, fiery red reverse, narrow florets. 3 feet.

POLLY

Yellow ground with intense red reverse. 4 feet.

RUBY

Light ground mottled with ruby, rich ruby reverse. 3½ feet.

STARFISH

Pale flesh ground with ruby reverse. 3 feet.

SWAN

Pure white with a flush of rose on the reverse. 3 feet.

Price: \$2.00 each, \$20.00 per dozen, \$150.00 per 100.



Gladiolus

Cultural Directions—Gladioli are very easy to grow and will do well in almost any ordinary garden soil. If planted in the richest place of garden and given plenty of sun and moisture, they will, however, repay you with extra large blooms and gorgeous colors.

To obtain a continuation of blooms during the greatest part of the season, it is advisable to plant at intervals of ten days, from the middle of April until the end of June.

Plant the bulbs 4 inches deep in heavy soil and 5 or 6 inches deep in light soil. To get your soil in good condition it will be necessary to spade deep and pulverize thoroughly. It is preferable to work in stable manure in the Fall if possible. If not, it is advisable to use fertilizer or bone meal in the Spring, such as is used for growing potatoes, being careful to mix the fertilizer well with the soil so that the bulbs will not come in direct contact with it.

Many people make the mistake of planting the bulbs too shallow, making it necessary to stake or tie up the flowers during the blooming time. This will not be necessary if our instructions for deep planting are followed.

ALBANIA

Pure glistening white flower, with finely ruffled edges. \$1.50 per dozen, \$10.00 per 100.

AMERICA

Beautiful soft lavender pink; very large flowers. 45¢ per dozen, \$3.50 per 100.

ANNA EBERIUS

Dark velvety purple rose, very distinct. \$1.50 per dozen, \$10.00 per 100.

BARON JOSEPH HULOT

Deep violet blue. \$1.50 per dozen, \$10.00 per 100.

BYRON L. SMITH

Most refined lavender pink on white ground. Color equal to a very choice Cattleya orchid. \$1.75 per dozen, \$12.50 per 100.

CARMEN SYLVA

Pure snow white, throat slightly penciled lilac, almost self, stem tall, slender, and wiry, always straight. Excellent for cutting. \$1.75 per dozen, \$12.50 per 100.

CONSPICUOUS

Light blue, dark blue spot with yellow center. \$1.50 per dozen, \$10.00 per 100.

CRIMSON GLOW

Perfect scarlet of a deep tone. Very large open flowers of the finest form. \$1.50 per dozen, \$10.00 per 100.

DIANA

Very handsome red, early. \$1.75 per dozen, \$12.50 per 100.

DR. F. E. BENNETT

Peach red, overlaid with flame scarlet, throat speckled with ruby and white. Very attractive. \$3.00 per dozen, \$20.00 per 100.

EARLY SNOWFLAKE

White, delicately tinted and flaked rose with tinge of yellow in throat, blended with delicate rose feathering on rear half of lower petals. \$1.00 per dozen, \$7.50 per 100.



GLADIOLUS

EARLY SUNRISE

Salmon, very large flowers. Earlier than Halley. \$1.75 per dozen, \$12.50 per 100.

E. J. SHAYLOR

Beautiful, pure deep rose pink. Very choice, ruffled. \$1.00 per dozen, \$7.50 per 100.

ELIZABETH TABOR

Delicate rose pink with rich crimson blotch. Very early. \$2.00 per dozen, \$15.00 per 100.

GIANT NYMPH

A giant in growth and flowers. Light rose pink with creamy yellow throat. \$1.75 per dozen, \$12.50 per 100.

GOLD

Pure golden yellow, throat a shade deeper, slightly dotted and streaked, almost self color. Large flowers, many open at one time and perfectly placed. A grand variety. \$1.75 per dozen, \$12.50 per 100.

GOLDEN MEASURE

Very large dark yellow. One of the best yellow varieties. Tall and graceful. \$2.00 per dozen, \$15.00 per 100.

HALLEY

Delicate salmon pink, with creamy blotch; an attractive early blooming variety; very popular. 60c per dozen, \$4.00 per 100.

HERADA

Pure mauve, glistening and clear, with deeper markings in throat. 80c per dozen, \$6.00 per 100.

JOE COLEMAN

Very bright red, carmine blotch, ruffled, very attractive. 80c per dozen, \$6.00 per 100.

LE MARECHAL FOCH

Beautiful shade of light pink. One of the largest Gladioli in the world. Blooms very early. 75c per dozen, \$5.50 per 100.

LILY WHITE

Pure white, lower petals cream shaded; very early. \$1.00 per dozen, \$7.50 per 100.

L'IMMACULEE

Pure white. \$1.75 per dozen, \$12.50 per 100.

LONGFELLOW

LaFrance pink. A pleasing color. Many large, wide open flowers on tall slender wiry stem. \$3.50 per dozen, \$25.00 per 100.

LOS ANGELES

Delicate pink with flame feather in throat. Blooms over long period. \$1.50 per dozen, \$10.00 per 100.

LOUISE

The lavender queen of the Gladioli. Velvety maroon blotch toward the center. Large flowers of good form. \$1.50 per dozen, \$10.00 per 100.

MARSHAL FOCH (Kunderd)

Finest salmon pink with small red mark in throat. Large flowers. Slightly ruffled. \$2.00 per dozen, \$15.00 per 100.

MARY FENNEL

Beautiful light lavender; lower petals pencilled with primrose yellow; perfectly exquisite and distinct; especially recommended. \$1.50 per dozen, \$10.00 per 100.

MARY PICKFORD

Delicate creamy white. \$1.00 per dozen, \$7.50 per 100.

MRS. (DR.) NORTON

White, edges suffused soft LaFrance pink; lower petals have a blotch of sulphur yellow and are speckled at base with Tyrian rose. \$1.50 per dozen, \$10.00 per 100.

MRS. FRANCIS KING

Salmon red. 45c per dozen, \$3.50 per 100.

MRS. FRANK PENDLETON

Flowers very large, of a lovely flushed salmon pink, with a brilliant carmine blotch on throat, presenting a vivid contrast. \$1.00 per dozen, \$7.50 per 100.

MRS. FREDERICK C. PETERS

Beautiful shade of rose lilac, with crimson blotch bordered white on lower segment; resembling an orchid in color. Flowers of large size and many open at one time on a strong stem. \$2.00 per dozen, \$15.00 per 100.

MRS. H. E. BOTHIN

Light geranium pink, scarlet center, heavily ruffled. \$1.75 per dozen, \$12.50 per 100.

MRS. LEON DOUGLAS

Begonia pink striped with brilliant scarlet. Pale lemon lip slightly speckled ruby. \$2.50 per dozen, \$18.00 per 100.

MR. W. H. PHIPPS

Beautiful flesh pink with about 20 blooms to a spike. \$3.50 per dozen, \$25.00 per 100.

NANCY HANKS

Tall large flowered variety shading from peach red to orange pink with prominent Grenadine tongue. \$2.50 per dozen, \$18.00 per 100.

NIAGARA

Delicate cream, blending to a canary yellow, throat splashed with carmine. 80c per dozen, \$6.00 per 100.

ODIN

Deep salmon pink with intense carmine blotch on lower petals. Large flowers on strong stem. Very early. \$1.50 per dozen, \$10.00 per 100.

ORANGE GLORY

Very rich orange color, with beautiful lighter throat; very distinct. (Ruffled.) \$1.00 per dozen, \$7.50 per 100.

OSALIN

Lovely coral pink with soft orange markings in the throat; very beautiful. \$4.00 per dozen.

PANAMA

Magnificent pale pink; very beautiful. 80c per dozen, \$6.00 per 100.

PEACE

Giant white, with a delicate lilac feathering on the lower petals. 75c per dozen, \$5.50 per 100.

PERSIA

Very beautiful dark red. \$2.50 per dozen, \$18.00 per 100.

PURPLE GLORY

Ruffled, velvet purple, large flowers. \$2.00 per dozen, \$15.00 per 100.

ROSE GLORY

Ruffled flowers of pure rose pink. \$2.00 per dozen, \$15.00 per 100.

1910 ROSE

Pure rose pink of extra fine shade. Narrow white central line on lower petals. 80c per dozen, \$6.00 per 100.

ROSE ASH

A grand novelty named Rose Ash by reason of its distinctive combination of old rose tones and ashes of roses. \$1.75 per dozen, \$12.50 per 100.

SCARLET PRINCEPS

Large spike of massive crimson scarlet flowers, 5 to 6 open at one time. \$1.75 per dozen, \$12.50 per 100.

SCHWABEN

Pure canary yellow, shading to a soft sulphur yellow. 80c per dozen, \$6.00 per 100.

VIVIAN MAE WILSON

Blush pink, suffused salmon with delicate lemon yellow throat. One of the daintiest Gladioli in existence. \$3.50 per dozen, \$25.00 per 100.

WAR

Deep red of brilliant color, extra large open flowers. \$1.00 per dozen, \$7.50 per 100.

WILBRINK

Lovely flesh pink with creamy blotch on lower petals; very beautiful. 75c per dozen, \$5.50 per 100.

YELLOW HAMMER

Pure yellow with a very small red mark in throat. \$1.00 per dozen, \$7.50 per 100.

ALICE TIPLADY

A grand, large Primulinus of most beautiful orange saffron color. Very choice. 80c per dozen, \$6.00 per 100.

DOROTHY WHEELER

Beautiful rose pink with light throat, slightly ruffled. \$1.00 per dozen, \$7.50 per 100.

ETHELYN

Orange, yellow. Very striking. \$3.00 per dozen, \$20.00 per 100.

JEWEL

Blush pink with large golden blotch. Tall graceful spike. \$1.00 per dozen, \$7.50 per 100.

MAIDEN'S BLUSH

Enchantress pink, well shaped flowers on slim spike. \$1.00 per dozen, \$7.50 per 100.

MING TOY

Tall, large beautiful buff, yellow center. \$1.00 per dozen, \$7.50 per 100.



MIRANDA

Large Primulinus type, producing 3 to 4 flower spikes from every bulb; color, fine canary yellow, slightly striped with carmine rose. 60c per dozen, \$4.00 per 100.

SALMON BEAUTY

Very large flowered Primulinus. Deep salmon, rich salmon yellow throat. \$1.50 per dozen, \$10.00 per 100.

SOUVENIR

Beautiful, rich canary yellow; tall, graceful spike. \$1.50 per dozen, \$10.00 per 100.

TOAZ

Pleasing shade of salmon over gold ground. Very attractive. \$1.50 per dozen, \$10.00 per 100.

WHITE BUTTERFLY

One of the finest white Primulinus grown. Creamy white throat with florets of decided butterfly form. Strong grower. \$1.75 per dozen, \$12.00 per 100.

SPLENDID MIXTURE

Containing names of varieties of Primulinus Types. Many bulbs of the above named sorts will be found in this mixture. \$1.00 per dozen, \$7.50 per 100.

ARTISTIC MIXTURE

Containing some named varieties and seedlings of Primulinus Hybrids. This mixture covers a wide range of colors and tints. 60c per dozen, \$4.00 per 100.

Roses for Outdoor Planting

Cultivation of Roses

If these cultural directions are faithfully followed, they will insure success

The Soil—Any good garden soil is suitable for Roses, providing it is well drained and rich in fertilizing elements. Cut the plants back well when they are first planted, about 6 inches from the ground, and after the Roses are planted, they should be well firmed in the soil with the foot. This will prevent the roots working up to the top of the soil. Hybrid Tea Roses can be planted 18 inches apart; the Perpetuals 2 feet apart; Climbers 4 to 5 feet apart, depending on the variety and the object desired. Be sure you do not permit any fresh manure to be used at the roots of the plants, as this will burn the roots.

Mildew and Black Spot—Sulphur lead dust, applied every two weeks, from May to Fall, or Bordeaux mixture—5 ounces powder to 1 gallon of water. (This discolors foliage lightly.)

For Sucking Insects—APHIS, ETC., that curl the leaves and spoil the buds. 1 teaspoon "Black Leaf 40" 1 ounce laundry soap, melted, 1 gallon of water.

For Leaf-eating Insects, Worms and Beetle—1 ounce arsenate of lead, 1½ gallons of water.

Combination Fungicide and Insecticide—Pyrox, Bordeaux mixture and arsenate of lead, 5 ounces of Pyrox to 1 gallon of water, 1 teaspoonful of "Black Leaf 40."

Fertilizer—Commercial tankage may be applied once a month, one handful to each bush, well raked in. If possible to procure some well rotted cow manure, put on during August as a mulch, or apply liquid cow manure diluted until it is the color of strong tea, one small dipperful to each bush twice a month until September 1st.

Watering—Soak the beds once every ten days and spray plants twice a week with as much force as possible with a nozzle on the hose. This helps control insects and keeps the wood soft enough to grow. This should be done early in the morning or sufficiently early in the afternoon so they will not be wet overnight.

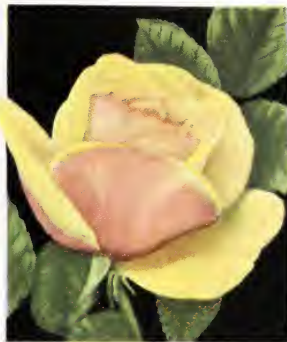
Cultivation—Stir the soil frequently, but do not cultivate deeper than 2 to 3 inches as the fine feeding roots must not be disturbed.

Pruning—The blooms must be cut off so as to induce new, strong shoots. The best shoots that make long stemmed Roses come from the lowest 6 inches of the bush, so prune severely if long stems are desired. Do not prune after September 1st, as the new growth thereafter will be too soft to live over the Winter.

Protection—Before the ground freezes, the soil should be drawn up to the base of the plant in a mound 7 to 8 inches high. After the ground has frozen cover the entire bed with straw or dry leaves, placing evergreen boughs on the top to prevent the leaves blowing away. Do not uncover too early, as the Spring sun and winds cause great damage. When so protected, even the most tender varieties of Hybrid Tea Roses are entirely hardy as far north as Winnipeg.



SOUVENIR DE GEORGES PERNET



REV. F. PAGE-ROBERTS



ETOILE DE HOLLANDE

The Totty Dozen

We are frequently asked by our customers to make a selection of about twelve plants of Roses, that we feel will give them good results under average growing conditions. We select the following this season as plants that we can guarantee to give satisfaction in practically all sections of the country. Three of the plants are illustrated herewith.

If you wish larger quantities of separate varieties instead of the "Totty's Dozen," you will find them described and priced on the following pages.

BETTY UPRICHARD

Copper red buds, opening to semi-double flowers of above average size; brilliant orange carmine on outer surface of petals, showing light salmon reflexes; spicy fragrance. Strong growing, persistent blooming and healthy.

DUCHESS OF WELLINGTON

Intense saffron yellow stained crimson, long pointed flowers of wonderful fragrance and very productive.

ETOILE DE HOLLANDE

Brilliant red blooms of magnificent size, perfect in half open state, showing clean, attractive centers when fully open; petals enormous; very fragrant. Plants branching; particularly free flowering and healthy.

MADAME BUTTERFLY

A glorified Ophelia. It is altogether more vigorous in growth than its parent Ophelia, as grown side by side in our establishment.

MADAME JULES BOUCHE

One of the finest garden Roses in the white section; of splendid form, and a very strong grower. We cannot too highly recommend Mme. Jules Bouche to any grower looking for a good white variety.

MRS. CHARLES BELL

Lovely shell pink buds and blooms of fine globular form with shadings of soft salmon; sweetly perfumed. The plants are notably strong and bushy, bearing good foliage seldom attacked by disease.

RADIANCE

A splendid and popular Rose, deep pink in color. Will produce 3 foot breaks without pinching; almost mildew proof, and a wonderfully fine Rose to handle.

RED RADIANCE

A duplicate of its parent in every respect save color which is a brilliant red; very free flowering in habit and vigorous in growth. A wonderful variety in every way and a welcome addition.

REV. F. PAGE-ROBERTS

A most beautifully shaped, long bud and a full, double flower of a rich orange gold, shading to a saffron yellow; growth vigorous and very free flowering. The most beautiful Rose of its color yet introduced.

SOUV. DE CLAUDIUS PERNET

Still the premier yellow Rose for the garden. This variety is clear shining yellow with very glossy foliage. The growth of the plant is sturdy and clean and it has made a mark for itself in all sections of the country, as being the yellow Rose of the century.

SOUVENIR DE GEORGES PERNET

The color of the flowers, which are exceptionally large and of globular form, is a brilliant orient red, shading to cochineal carmine at the end of the petals and the entire Rose is suffused with a golden sheen, making it one of the most attractive colored Roses that has been offered in many years.

WILLOWMERE

Free and perpetual; color coral red, opening to shrimp pink; resembles the Lyon Rose very much.

Price on Totty Dozen, \$10.00

New and Rare Varieties

BETTY SUTTOR

An improved "Mme. Abel Chatenay," of large full double high centered flowers of delicate rosy pink in the inside of the petal with an outside bright rose pink. As the flowers open, the petals reflect showing the flower to its best advantage. Strong vigorous healthy grower and wonderfully fragrant.

Price: \$1.50 each, \$15.00 per dozen

CHARLES P. KILHAM

A most gorgeously rich flower of beautiful form and very free flowering. The color is a rich brilliant red flushed orange and scarlet. One of our freest flowering varieties. This was awarded the Gold Medal of the National Rose Society of England in the spring of 1927.

Price: \$1.50 each, \$15.00 per dozen

DAINTY BESS

One of the daintiest colored Single Roses, we have ever had the pleasure of introducing. This has large single flowers delicately crinkled on the edge of the petals of orange pink with conspicuous center of crimson stamens. A beautiful variety for table decoration or used as a cut flower.

Price: \$1.50 each, \$15.00 per dozen

DORINA NEAVE

A beautiful silvery pink. Large fragrant flowers. Very fine strong grower and most productive.

Price: \$1.50 each, \$15.00 per dozen

DUCHESS OF ATHOL

Old golden orange, flowering peach pink. A beautiful strong grower and very profuse blooming variety. Should be extremely popular on account of its unusual color.

Price: \$1.50 per plant, \$15.00 per dozen

EDITH NELLIE PERKINS

Long, pointed buds, the outside of which are cream and blush, shaded with orange at the base. The inner petals of the flower is salmon pink with golden orange base. The flower is wonderfully large in size, and exquisitely fragrant.

Price: \$1.50 per plant, \$15.00 per dozen

E. G. HILL

The flower is dazzling scarlet, shading on a deeper pure red, as it develops. It produces long stems naturally and the foliage develops freely and is of fine color. The bud is unsurpassed in beauty—except by the open flower, which is a wonder.

Price: \$1.50 each, \$15.00 per dozen



TALISMAN (Page 45)

FLAMINGO

A very wonderful Rose in bud, being long pointed and spiral in form, but opens out quickly to semi-double flowers of bright geranium red passing to glowing cerise, as the flower opens. Particularly strong grower and very productive.

Price: \$1.50 each, \$15.00 per dozen

GLADYS BENSKIN

A most striking Rose. The color of the long pointed buds is salmon cerise over golden yellow, with deep yellow veinings. Very vigorous, free branching growth and perpetual flowering.

Price: \$1.50 each, \$15.00 per dozen

GOLDEN DAWN

An Australian Rose of light lemon yellow splashed crimson, very strong, free flowering habits and fine foliage.

Price: \$1.50 each, \$15.00 per dozen

NEW AND RARE VARIETIES—Continued

IMPRESS

Cardinal red with an orange suffusion developing into magnificent flowers, which last considerable time. As the flowers age, they shade to a salmon cerise, overlaid with a golden sheen. Wonderful grower and most productive.

Price: \$1.50 each, \$15.00 per dozen

IVY MAY

One of the most attractive varieties of the Ophelia type. A pretty rose pink in color, running to amber at the base, flushed with gold on the outside, and at the edges of the petals, glowing and sparkling.

Buds of medium size, long and pointed, very fragrant.

Price: \$1.50 each, \$15.00 per dozen

JAMES GIBSON

Glowing crimson scarlet of velvety texture, and good substance. Free, bushy upright grower with disease resistant foliage. An exceptional variety.

Price: \$1.50 each, \$15.00 per dozen

JOANNA HILL

This is a seedling of Amelia Gude and Mme. Butterfly. It is a very free flowering Rose of clear yellow, deepening at the center to an orange yellow.

Price: \$2.00 each, \$20.00 per dozen

JULES GAUJARD

Glistening cochineal crimson in the bud, which when fully opened shades to orange rose, extremely free flowering and a strong grower.

Price: \$1.50 each, \$15.00 per dozen

LADY FORTEVIOT

Large ovoid buds opening to very large moderately double artistic well lasting flowers of delightful fruity fragrance of a bright golden yellow flushed with cardinal red, borne several together on long strong stems.

Price: \$1.50 each, \$15.00 per dozen

LADY LESLIE

In the bud form, this variety is rosy scarlet passing to scarlet carmine, suffused saffron yellow on a yellow base. This variety is not alone very handsome in its color but also has very healthy gray green foliage.

Price: \$1.50 each, \$15.00 per dozen

LADY MARY ELIZABETH

A variety of outstanding merit. Of strong, vigorous, upright, branching habit with good, healthy foliage and very prolific flowering. Flowers delightfully fragrant. Long pointed buds with deep, substantial petals; in color a brilliant carmine pink.

Price: \$1.50 each, \$15.00 per dozen

MARION CRAN

In the young stage, before the flower expands, the color is deep buttercup yellow, margined and flushed cerise and rosy scarlet. As the flower opens, the outside of the petals retain the color, while the inner side opens a brilliant geranium scarlet, flushed and veined orange and yellow.

Price: \$1.50 per plant, \$15.00 per dozen

MRS. SAM MCGREDDY

A beautiful combination of scarlet coppery orange, heavily flushed with Lincoln red on the outside of the petals which colors give a rich and dazzling effect. Particularly brilliant in sunshine which seems to illumine the flower and a bed seen under favorable conditions is a wonderful sight. Sweetly scented with dark reddish bronze green foliage that is mildew proof.

Price: \$2.50 each, \$25.00 per dozen

MAY WETTERN

Bright salmon pink in the bud, deepening flesh pink and when fully expanded is a beautiful bright rose. A very artistic bud and a splendid grower.

Price: \$1.50 each, \$15.00 per dozen

MRS. C. A. VAN ROESSEM

Orange scarlet with bronzy crimson shadings. Very fragrant, and continuous in bloom; beautifully formed flowers on long stiff stems.

Price: \$1.50 each, \$15.00 per dozen

PORTADOWN

Deep crimson with velvety sheen beautifully formed flowers reminding one of "Mrs. H. Morse" at its best. Continual free bloomer with nice, glossy foliage.

Price: \$1.50 each, \$15.00 per dozen

PORTADOWN BEDDER

The charming combination of unusual colors of this Rose make it one of the most sought after varieties. Petals orange yellow on the outside, cerise flush deepening toward the edge and on the inner petals is a scarlet cerise on an orange background. Very free flowering with beautiful green foliage.

Price: \$1.50 each, \$15.00 per dozen

PRESIDENT HOOVER

This is a glorious Rose, wonderfully free in the easy manner in which it grows and charming in its color arrangement which is a splendid combination of cerise pink, flame, scarlet and yellow, and this combination gives the most dazzling color effect ever seen in any Rose. It is one of the most cheerful Roses imaginable. The flower is large and the bud beautifully pointed. The petals are broad and thick, retaining this characteristic days after the flowers are open. It is a splendid keeper, much on the order of "Pernet" in this respect.

The exquisite fragrance of this Rose is one of its strongest points.

Price: \$1.50 each, \$15.00 per dozen

TALISMAN

The Rose, which created a sensation in all Shows during 1928 and 1929, and which was awarded more Gold Medals than any other American Rose yet introduced including the President Coolidge Medal in 1928. It is a most remarkable piece of coloring; a combination of shadings of gold, apricot, yellow, deep pink and old rose. The bud is long, well formed and develops into full double flowers. The plants are strong growers, with glossy green foliage and free flowering, and the past season has demonstrated its value as a bedding Rose

Price: \$1.50 each, \$15.00 per dozen

Hardy Garden Hybrid Tea Roses

Bloom from June to November

Price: \$1.00 per plant, \$10.00 per dozen, \$85.00 per 100

ADMIRAL WARD

Blackish, buds opening slowly to large, superbly formed blooms of good crimson red; very fragrant. Grows moderately and blooms best in Autumn.

BETTY

Copper yellow, overspread with golden rose; long, pointed buds.

BETTY UPRICHARD

Coppery red buds, opening to semi double flowers of above average size; brilliant orange carmine on outer surface of petals, showing light salmon reflexes; spicy fragrance. Strong growing persistent blooming and healthy.

BRIARCLIFF

A sport from Columbia, retaining all the good qualities of its parent, color more brilliant than Columbia, being a true rose pink without any shadings whatever. Long pointed bud, and very fragrant. Every bud of this variety is 100 per cent perfect. Abundant dark green foliage and habit of plant very vigorous.

CAROLINE TESTOUT

Salmon pink, large and very free; one of the very finest Roses ever produced for any purpose.

CONSTANCE

Long, orange yellow bud; streaked with crimson. Large, full flower; a greatly improved Rayon d'Or.

DAME EDITH HELEN

The plant possesses a strong, vigorous constitution, with large, healthy, dark green foliage. The flowers are produced singly on well foliated strong canes and are of immense size, composed of very substantial, broad petals which curl back prettily, forming a wonderful long pointed bud, which develops into a full, double flower, and is absolutely perfect in every stage of development. The color is a brilliant, yet, soft Rose du Barri pink and is delightfully and strongly sweet scented.

DUCHESS OF LUXEMBOURG

One of the most gorgeously deep coppery yellow Roses, that we have ever had the pleasure of distributing. It is known as "the Rose of the South."

DUCHESS OF WELLINGTON

Intense saffron yellow, stained crimson, long pointed flowers, of wonderful fragrance and very productive.

ETOILE DE HOLLANDE

Brilliant red blooms of magnificent size, perfect in half open state, showing clean, attractive centers when fully open; petals enormous; very fragrant. Plants branching; particularly free flowering and healthy.

EVEREST

An immense Rose of ivory white, known as the largest Rose yet raised. When fully developed it resembles a Peony on its long, stiff stems. Hybrid Tea in type, with the vigorous growth of a Hybrid Perpetual. Considered one of the finest white Roses ever grown.



BETTY

FRANK READER

It is a large, massive flower with high pointed center, with nicely reflexing petals of great substance, the long buds in first developing are a light lemon yellow, while the flowers in their half expanded form reveal a heart of golden apricot; it has a delicious rose apple scent.

FRAU KARL DRUSCHKI

Pure snow white, long pointed buds, large, full flowers. Perpetual type.

GENERAL JACQUEMINOT

Brilliant scarlet crimson; old favorite; one of best known Roses in cultivation; does well everywhere.

GOLDEN EMBLEM

A perpetual blooming Rose of deep orange when first opening, flushed claret red, and opening to a pure sulphur yellow. It surpasses Marechal Niel in form and striking color. Ideal in growth and habit; a most striking Rose.

GRUSS AN TEPLITZ

Bright scarlet crimson; splendid Rose for massing.

HOOSIER BEAUTY

A rich, velvety crimson in color with deeper shadings. It is as fragrant as Richmond, has more petals and better keeping qualities.

JOHN RUSSELL

A very handsome, rich red Rose; a brilliant deep velvety crimson. Vigorous, strong growth and a very hardy variety. Awarded the Gold Medal of the R. H. S.

KAISERIN AUGUSTE VIKTORIA

Creamy white, immense substance, petals smooth and nicely arranged. A popular variety.

LADY ASHTOWN

Satiny buds and blooms of deep shining pink, with a yellow glow at base of petals; high center, double and quite fragrant. Plant is strong, free blooming, and hardy, but needs protection against disease.

LADY HILLINGDON

Very free blooming and beautiful, even, coppery yellow in color all through the year and particularly fine.

LADY ALICE STANLEY

The outside petals are a deep rose pink; inside pale flesh, slightly flushed with a deeper shading, a most beautiful color combination. Blooms are very large and full, of great substance and productiveness and one of the most fragrant Roses in existence.

LADY MARGARET STEWART

A Rose of unique and distinct color, the flowers in the young stage are a deep sunflower yellow heavily veined and splashed with orange scarlet, with the reverse of the petals deeply suffused with carmine. The bud is long and pointed, opening to a full, double flower, of most pleasing decorative form of delightfully sweet scent. This Rose is proving very popular and is being grown in increased quantities this season by the customers who purchased plants since its introduction three years ago.

LOS ANGELES

Growth, very vigorous, flowers luminous flame pink toned with coral, with lighter shadings at the base; buds are long and pointed and expanding to a flower of mammoth proportions.

LORD CHARLEMONT

Bright scarlet crimson, very free flowering Rose, a good shape and habit, and one that is destined to be very popular as soon as it is generally known. Has been called the best red Rose for outdoor culture introduced to date.

LOUISE CATHERINE BRESLAU

Coral red, shaded chrome yellow, opening to a large, full flower of shrimp pink, shaded coppery orange.

MADAME BUTTERFLY

A glorified Ophelia. It is altogether more vigorous in growth than its parent Ophelia, as grown side by side in our establishment.

MARGARET MCGREDDY

Large, beautifully shaped, full, double flowers, entirely distinct from all others in its rich coloring, which is a brilliant shade of Turkish or Oriental red, passing as the flowers age to a beautiful carmine rose. These are borne on long, stiff stems and hold their form and beauty for a long time.

MISS LOLITA ARMOUR

Deep coral red with a golden coppery red suffusion. Base of petals rich golden yellow with coppery red sheen. Strong growing habit and very free flowering.

MRS. AARON WARD

A general favorite, rather short in bud, but wonderfully free flowering. In the bud state color is a beautiful, rich yellow, which changes to shades of pink as the flower develops.

MRS. A. R. BARRACLOUGH

Pink sounds uninteresting in a Rose, there being so many of this shade, but in this new variety we have a most distinct and valuable addition of a bright but soft sparkling carmine pink of an even shade, passing to yellow at the base of the petals. The color does not fade as the flower ages, but appears to become brighter. The bud is long and perfect, and develops into a full, double flower of great size and substance; very fragrant.

MRS. HENRY BOWLES

A luminous, deep salmon pink, and a Rose of very striking appearance. Beautifully, long-shaped buds, developing into perfect high-centered full double flowers. A variety that is always in bloom.

MME. EDOUARD HERRIOT

Color of this Rose is a gorgeous combination of reddish terra-cotta and bronze with flame shadings; almost impossible to describe; foliage bright and glossy and practically mildew proof.

MRS. LOVELL SWISHER

As a garden Rose will undoubtedly rank with such popular bedding varieties as Radiance, Red Radiance, Lady Ursula, Mrs. William C. Egan, etc. Color, deep salmon copper, merging to salmon pink at the tips of the petals.

MRS. REDFORD

One of the most distinctive and desirable Roses of recent introduction. Bright apricot orange—one of the most lovely of this tone of color—an upright grower with holly like mildew-proof foliage.



MADAME BUTTERFLY

Prices: \$1.00 per plant, \$10.00 per dozen,
\$85.00 per 100, except where noted

MRS. CHARLES BELL

Lovely shell pink buds and blooms of fine, globular form with shadings of soft salmon; sweetly perfumed. The plants are notably strong and bushy bearing good foliage seldom attacked by disease.

MRS. ERSKINE P. THOM

A strong, healthy grower, equal in strength to the Radiance type of Rose. Beautiful, dark bronzy green, disease resistant foliage. Rich lemon yellow flowers, very sweetly scented and a very free flowering variety.

MISS ROWENA THOM

It is almost impossible to give a true color description of this Rose. It seems as if all the shades of a desert sunset have been caught in all their splendor and held by this beautiful Rose. The deep center glows with vivid Oriental red, shading to rose, as the bud expands and gradually passing to delicate mauve in the full blown flower. The flowers are large and borne on stems 30 inches long, which are practically thornless.

OPHELIA

Color clear, bright salmon, often deepening toward golden pink; wonderfully fragrant, with long pointed buds and stiff stems. Large, handsome foliage, showing that it is a wonderfully free bloomer and grower, and not prone to mildew.

PATIENCE

Brilliant, scarlet carmine lake; as the flower opens, the color is a deep orange at base, with orange scarlet shadings. The flowers are large, of perfect form, and last a long time in perfection, delicately sweet scented. The plant is a strong grower of free branching, upright habit and a free and perpetual bloomer.

PADRE

Most attractive and novel in coloring, with long petals of a coppery scarlet flushed with yellow at the base. Produced on long shoots. Growth strong and upright and exceedingly free flowering.

PINK PEARL

In color, it is a brilliant, rich cerise pink, the base of the petals touched with gold that lights up the flower wonderfully, particularly in the half expanded bloom. The flowers are full, double, of perfect form and produced most profusely on plants of vigorous, healthy growth.

RADIANCE

A splendid and popular Rose; deep pink in color. Will produce 3-foot breaks without pinching, almost mildew proof and a wonderfully fine Rose to handle.

Price: \$1.00 per plant, \$10.00 per dozen, \$85.00 per 100, except where noted

**RED RADIANCE**

A duplicate of its parent in every respect save color, which is a brilliant red; very free flowering in habit and vigorous in growth. A wonderful variety in every way and a welcome addition.

REV. F. PAGE-ROBERTS

A most beautifully shaped, long bud and a full, double flower of a rich orange gold, shading to a saffron yellow; growth vigorous and very free flowering. The most beautiful Rose of its color yet introduced.

SOUVENIR DE CLAUDIUS PERNET

This variety is a clear shining yellow, with very glossy foliage. The growth of the plant is sturdy and clean and it has made a mark for itself in all sections of the country.

SOUVENIR DE GEORGES PERNET

The color is a brilliant Orient red, shading to cochineal carmine at the end of the petals and the entire Rose is suffused with a golden sheen, making it one of the most attractive colored Roses that has been offered in many years.

VILLE DE PARIS

A rich, buttercup yellow much in the style of Mrs. Beckwith, but with longer buds and larger flowers, and purer in color. The plant is of vigorous growth and very free flowering.

WILLOWMERE

Free and perpetual; color coral red, opening to shrimp pink; resembles the Lyon Rose very much.

Novelty Climbing Roses



CHAPLIN'S PINK CLIMBER

Unquestionably the most important acquisition in Climbing Roses since the introduction of Dr. Van Fleet and Paul's Scarlet Climber, which are universally recognized as the two most popular Climbing Roses in the country and to which Chaplin's Pink Climber will prove an equally valuable companion.

This striking novelty originated at Waltham Cross, England, in the same nursery in which Paul's Scarlet Climber was raised. It is a cross between Paul's Scarlet Climber and American Pillar, of strong, vigorous growth, perfectly hardy with large, glossy, dark green foliage producing its large flowers, similar in size and form to Paul's Scarlet Climber, very profusely in strong trusses of from 8 to 12 flowers each, but in color it is a rich lively pink.

Price: \$1.50 each, \$15.00 per dozen

MME. GREGORIE STAECHELIN

This is a seedling of "Frau Karl Druschki" and "Chateau de Clos Vougeot." This has a very strong climbing habit, growing twelve or more feet high, with wonderful disease resistant foliage. The long pointed full fragrant flowers are crimson, and when fully opened is an iridescent pearl pink inside. It has been predicted that this variety is probably the pioneer of a new race.

Price: \$1.50 each, \$15.00 per dozen

PRIMROSE

A new yellow Climber, with double canary yellow flowers, and very, very hardy. Most satisfactory yellow Climbing Rose introduced today.

Price: \$1.00 per plant, \$10.00 per dozen

SCORCHER

An introduction from Australia that creates a sensation in its flowering season. The entire plant is covered with beautiful vermillion flowers.

It is most profuse in flowering habit, and is an extremely vigorous variety.

Price: \$2.50 per plant, \$25.00 per dozen

Climbing Roses Standard Varieties

Price: \$1.00 per plant, \$10.00 per dozen, except where noted

AMERICAN PILLAR

Single flowered variety of great beauty. Flower 3 or 4 inches across borne in immense clusters. Brilliant shade of pink with clear white eye; wonderfully decorative even when not in flower as the blooms are followed with brilliant red berries and this Rose retains its foliage much later than most varieties.

CLIMBING AMERICAN BEAUTY

This is one of the best of the Climbing Roses. A strong, vigorous grower with large flowers of pleasing rose pink, freely produced.

CLIMBING CAROLINE TESTOUT

Soft pink Climbing Hybrid Tea, a very fragrant sort.

CLIMBING LADY ASHTOWN

This is a Hybrid Tea variety and perhaps one of the best in the whole section of Climbing Teas. Its merit is in the wonderful way it produces flowers throughout the whole season, being apparently almost equally good in the Fall as in June, when it first comes into bloom.

DOROTHY PERKINS

Clear, bright pink, trailing growth, profuse bloomer.

DR. W. VAN FLEET

Beautiful flesh pink, borne on long stems; buds long and pointed, plants very strong, brilliant dark glossy foliage, mildew proof, splendid for cutting.

EMILY GRAY

The best yellow Climbing Rose ever introduced. Color clear golden yellow, all flowers are double, with long buds, and attractive, dark green foliage. Very free flowering, splendid growing habits. \$1.50 per plant, \$15.00 per dozen.

JACOTTE

Color shrimp pink or light salmon orange shaded golden yellow at base; flowers fully 2½ inches in diameter, delightfully scented; rich, dark green, glossy disease-resisting foliage. \$1.50 per plant, \$15.00 per dozen.

MARY WALLACE

Originated by Dr. Van Fleet. A Pillar Rose growing 6 to 8 feet high, with large, glossy foliage blooming with great freedom in the Spring and bearing quantities of flowers in the Summer and Fall. Large flowering, about 4 inches across, semi-double, bright clear rose pink, with salmon base in the petals. \$1.50 each per plant.

PAUL'S SCARLET CLIMBER

The flowers are medium in size, being semi-double and carry three to six flowers on each spray. Paul's Scarlet Climber has received several gold medals.

SILVER MOON

Pure white in color with yellow stamens in the center, showing up a very attractive variety. Foliage bronzy green; stems of flowers very long and fragrance very lasting.

STAR OF PERSIA

A gorgeous, brilliant yellow, semi-double Rose with individual flowers about 3 inches across. Wonderful where one desires a low climber or Rose from 8 to 10 feet high. In wonderful condition throughout the month of June, and lasts for several weeks. \$1.50 per plant, \$15.00 per dozen.



DR. VAN FLEET



A ROSE GARDEN

Tree Roses

We have the finest collection of Tree Roses it is possible to procure in this country this season. These plants have been specially grown for us by an expert, and since good Tree Roses are very scarce, we would suggest that our customers place their order as early as possible for the quantity and varieties desired.

Price: \$3.00 each per plant, \$30.00 per dozen

CAROLINE TESTOUT

A soft pink, very free flowering and possibly the most popular Tea Rose grown.

GENERAL MACARTHUR

Deep velvety scarlet; free and erect branching.

GRUSS AN TEPLITZ

Bright scarlet crimson; splendid Rose for massing.

HADLEY

Beautiful long buds of rich velvety crimson and very fragrant.

IMPERIAL POTENTATE

A crisp glistening rose pink, very sweetly scented.

LOS ANGELES

Luminous flame pink toned with coral, with lighter shading at the base.

MME. EDOUARD HERRIOT

In color a gorgeous combination of reddish terra-cotta and bronze, with flame shading.



SOUVENIR DE CLAUDIUS PERNET

A clear shining yellow with very glossy holly like foliage. Known as "The Yellow Rose of the Century."

Baby Rambler and Dwarf Polyantha Roses

These are delightful for massing in beds, or as edges for borders. They are most profuse and continuous bloomers and their small, neat flowers are produced in large clusters.

Price: \$1.00 per plant, \$10.00 per dozen, except where noted

CECILE BRUNNER (The Sweetheart Rose)

Dainty, double flowers of soft pink, growing in graceful sprays.

GRUSS AN AACHEN

One of the finest Polyantha Rose plants ever introduced. It is orange red and yellow in the bud, opening to light flesh pink and salmon yellow, resembling very much a bouquet of Hybrid Tea Roses on one stem.

IDEAL

A dwarf growing Polyantha of great merit, flowers dark amaranth red, produced in large clusters. An ideal

variety as its name implies, for giving satisfaction and results.

LAFAYETTE

A strong growing, very profuse flowering Polyantha, crimson scarlet in the bud, developing as it expands to a brilliant rosy cerise. It is borne in clusters of good size, the individual flowers being about the size of Paul's Scarlet Climber.

JESSIE

Glowing crimson; the finest red to grow.

MRS. CUTBUSH

Clear, deep pink, fine growth and habit.

Price: \$1.00 per plant, \$10.00 per dozen, except where noted

GLORIA MUNDI (New Polyantha Rose)

One is sadly tempted to use superlatives when speaking of this Rose. It won medals galore in Holland where it originated and also in England, France and Belgium. The writer was fortunate enough to see the first plants, that were exhibited and has been in love with it ever since.

The color is the most brilliant shade of geranium red with a salmon orange shade, and the strongest feature of this Rose is, that the color does not fade, as do so many varieties of this color. A color plate cannot do this Rose justice. It sells at sight, and we are glad indeed to be able to help in its distribution.

**Price: 2 year stock \$2.50 each,
\$25.00 per dozen; 1 year stock \$1.50
each, \$15.00 per dozen**



GLORIA MUNDI

Hardy Perennial Plants

We can fill your needs for Hardy Perennials. If we do not list the particular variety you desire, write us and we will try to procure same for you

Our plants are field grown clumps that will give splendid results the first blooming season after they are planted in your garden. We have added some varieties that are quite rare and new and continue to list all the varieties that have proven so very satisfactory to our customers.

Price: 50c per plant

\$3.00 per dozen

\$20.00 per 100

unless otherwise noted

At least three plants of one variety must be purchased to obtain the dozen rate.

Varieties marked with an asterisk (*) are suitable for Rock Gardens.



ACHILLEA

Ptarmica, the Pearl

Small heads of pure white flowers, excellent for cutting. Blooms from Midsummer to October. About 18 inches high.

ACONITUM (Monkshood)

Fischeri

A very hardy late blooming Aconitum that comes into bloom in September and lasts well into October. These beautiful spikes of hooded flowers are a lovely shade of delph blue and are a very attractive addition to the hardy border in the Fall. May be used in semi-shady locations and grow about 24 inches high. There is no danger attached to growing these plants, as they are poisonous only when eaten.

Sparks Variety

The darkest blue of all, flowering in June and attaining a height of about 2½ feet. Does well in a shady or half shady location. \$5.00 per dozen, \$35.00 per 100.

Price: 50c each, \$3.00 per dozen, \$20.00 per 100, except where noted

ALYSSUM (Rock Madwort)

*Saxatile Compactum

Splendid plant for the rockery or border, growing a foot high; golden yellow flowers with dense, compact heads. 1 foot. April and May.

*Argenteum

15 inches high. Bright yellow clusters of flowers continue well into the Summer.

ANTHEMIS (Hardy Marguerite)

Kelwayi

Large, golden yellow, daisy-like flowers produced continuously all Summer. This flower attains a height of 2½ feet. June to August.

ANCHUSA (Alkanet)

Barrelieri

Early Bugloss. A delightful early blue flower, more compact and bushy in growth than *Anchusa italica*, *Dropmore*. Blooms in May and is covered with small, dark blue flowers with pinkish yellow throats. About 2½ feet high and thrives in full sun.

ANCHUSA—Continued

Dropmore Variety

Rich gentian blue; one of the earliest of the blue flowers. Plants form beautiful specimens, 3 to 4 feet high. One of the most exquisite blue flowers for the garden. June to August.

***Myosotidiflora**

Another valuable perennial is this Dwarf Anchusa. It comes into bloom in May, and continues blooming for about six weeks. The flowers somewhat resemble Forget-me-nots but are the brilliant blue of the tall Anchusa. The leaves are heart shaped and add interesting foliage effect after the plant stops blooming. It grows about 1 foot high and is admirably adapted to rock gardens or borders. Thrives in full sun, but will do fairly well in partial shade. 50c per plant, \$5.00 per dozen, \$35.00 per 100.

**ANEMONE JAP (Japanese Windflower)
Queen Charlotte**

One of the most beautiful plants in our Fall gardens, blooming in September and October. Grows about 18 inches high and is excellent for cut flowers in the house. Semidouble; beautiful light pink.

Whirlwind

Semidouble, pure white.

ARABIS (Rockcress)***Alpina**

Pure white flowers produced in dense masses, splendid for border work and last quite some time when cut. Forms a dense carpet of white flowers. April and May.

***Florepleno**

Double flowering form of the above; flowering two weeks later. 12 inches. 50c each, \$3.50 per dozen, \$25.00 per 100.

***Albida**

The gray leaf "Rockcress." Spikes of white blooms in April and last well into the Summer.

ARENARIA (Sandwort)***Montana**

Covered with white blossoms in early Summer.

ARMERIA***Lauchiana**

Adapted to growing in pockets between rocks. Vivid pink flower, borne on 5 inch stems; flowering May and June.

ARTEMISIA**Lactiflora**

One of the most useful tall plants we have, blooming in August and September. Grows about 4 feet high and makes a splendid foliage background for Phlox and Summer Lilies. The milk white bloom is borne on graceful sprays, producing a lacy effect. A most delightful fragrance fills the garden while this plant is in bloom.

Silver King

A very useful plant in the hardy border, growing about 3 feet high and blooming in early Summer. Producing beautiful sprays of mist like flowers with silvery gray foliage adding an effect of lightness among the dark green foliage of the other perennials in bloom at that time. Keeps a long time as a cut flower and may be dried in Winter.

AQUILEGIA (Columbine)

These native flowers of North America are wonderfully useful as cut flowers. Will grow in any location, but give best results in well drained and sunny position. One of the best known hardy perennials. May and June.

HOWARD'S HYBRIDS

The Rocky Mountains have given us many beautiful flowers, but nothing to touch these marvelous Aquilegias with their lovely pastel shades, as delicate as a fleecy cloud in a Summer sky of palest blue. These charming colors run from light blue through all the shades of light pink, creamy white, delicate lavender, to brilliant scarlet. When massed in mixed colors in the perennial border they give an effect of airy daintiness not surpassed by any other flower. Assorted colors.

Price: 50c each, \$5.00 per dozen

See color page

***Alpina**

Lovely blue and white flowers, 10 to 12 inches high. Blooming May and June.



ANEMONE JAPONICA ALBA

Price: 50c each, \$3.00 per dozen, \$20.00 per 100, except where noted

HARDY PERENNIAL PLANTS—*Continued*



LONG-SPURRED HYBRID_AQUILEGIA (*See description, page 54*)

Price: 50c each, \$5.00 per dozen, \$35.00 per 100



HARDY ASTERS (Michaelmas Daisy)

These lovely Fall flowering subjects, which are natives of North America and absolutely hardy in any section of the country, deserve much more extensive cultivation. The following varieties are the cream of the European collections and are well worthy of a place in every garden, since they are so distinct in type and novel in colors. We would suggest that the size of the flowers may be very greatly increased if the clumps are divided each Spring, and each plant grown to a single stem. The central growing tip should be pinched out to induce branching. This makes a sturdy plant that requires very little support and keeps the height about 3 feet.

Skylands Queen

Exceptionally large lavender blue flowers with clear yellow center. A very decorative flower in the border, and most attractive as a cut flower. It blooms during late August and September, and grows about 3 feet high. Price: 50c each, \$5.00 per dozen.

Price: 50c each, \$5.00 per dozen

STANDARD VARIETIES

Price: 50c per plant, \$3.00 per dozen
\$20.00 per 100, except where noted

Anita Ballard

Soft Cornflower blue. Flowers 2 inches across. Very early and very free flowering. The broad ray florets are recurved with pale silvery undersides.

Barr's Pink

Lovely light mallow pink with stiff petals and a brilliant golden center growing from 3 to 4 feet high. Well branched and the flowers are admirably spaced and give the appearance of a gigantic head of pink

Price: 50c each, \$3.00 per dozen, \$20.00 per 100, except where noted

Phlox. The individual flowers are 2½ inches in diameter, coming into bloom about mid-September, and add a mass of glowing pink to the Fall garden.

British Queen

Soft lavender blue, semi-double, unusually large, open flowers with pale yellow center. A vigorous growing, well branched plant that comes into bloom early September. Height about 4 feet. Excellent for cutting and decorative work.

James Kelway

A bright blue, single, keeps its color well and has fine, stiff branching habit. A very attractive companion to Mrs. D. Mitchell or St. Egwin. 3½ feet high.

King of the Belgians

Large, semi-double, lavender blue flowers, larger than Climax. 5 feet.

Lavender Queen

Strong, erect branching growth about 3½ feet high. Pure lavender fringed petals, with golden center. Very attractive new seedling.

Louvaine

Soft rose pink, large open flowers. Very vigorous growth, about 3 feet high, coming into bloom mid-September.

Marne

One of Mr. E. Beckett's new varieties bearing soft pink flowers with yellow centers, blooming in September. 2½ feet high.

Mrs. D. Mitchell

Pure pink, resembling St. Egwin, but much taller and far superior. Height 4 feet.

Perry's White

Large, circular snow white flowers over 2½ inches in diameter, broad, overlapping petals, a golden disc which changes to maroon crimson; very free and of good habit. 3 feet high.

Royal Blue

This is a large blue, apparently double at first, but when afterwards it opens fully, it forms a distinct, cup shape flower with a golden disk at the bottom. Medium height. Blooms early September. 2½ feet high.

Ryecroft Purple

Very bushy purplish flowers with yellow center. 4 feet high.

St. Egwin

Lovely shade of light pink, very bushy form, about 3 feet high, blooming mid-September.

Address All Correspondence

to

Totty's, Madison, N. J.

ASTILBE—See Spiraeas

AUBRIETIA

***Purpurea**

Wallcross. Tiny purplish blue flowers in April and May.

***Liechtlini**

Same as above with rosy pink flowers.

BAPTISIA (False-indigo)

Australis

Very attractive dark blue, pea shaped flowers in long curving racemes, somewhat similar to Lupines, but more hardy in every way. Blooms in June and is about 2 feet high. Suitable for the hardy border or wild garden and not at all particular as to soil requirements.

BOLTONIA (False-camomile)

Asteroides

Flower heads pure white; flowering at the same time as the popular Michaelmas Daisies. 5 to 6 feet.

Latisquama

Beautiful pink flowers. Same type as above. 5 feet.

BUDDLEIA

Veitchiana

Beautiful violet mauve; a splendid Summer flowering shrub, absolutely hardy under any conditions; flowers are borne on long, cylindrical spikes, 12 to 15 inches in length; flowers the first season it is planted; a beautiful plant. 3 to 6 feet.

CERASTIUM

***Tomentosum**

Silvery, low-growing foliage plant which is used very largely for planting dry, sunny spots. Carpet growth. May to mid-June.



AUBRETIA



CAMPANULA (Telham Beauty)

CAMPANULAS

(Canterbury-bells or Bellflower)

These lovely flowers have great variety of color and form and the taller varieties are useful for cut flowers as well as in the hardy border.

Medium

Blue, white and rose.

Calycanthema

Cup-and-saucer. Blue, white, rose and deep violet.

Persicifolia

(Telham Beauty Hybrids)

These very beautiful light blue bell like flowers appear in June and July on 2½ foot stems. The great advantage of this type is, that it is Perennial and these particular hybrids have much larger flowers than the former Campanula Persicifolia.

This also comes in the large flowered white form of the above.

Price: 50c each, \$5.00 per dozen

***Carpatica Blue**

A dwarf variety well suited to the rock garden, blooming from June to mid-October, a lovely blue flower on a slender stem 9 to 10 inches high.

Price: 50c each, \$3.00 per dozen, \$20.00 per 100, except where noted



CHELONE (Shell Pink)

***Carpatica Alba**

White form of the above.

***Rotundifolia**

Pale blue flowers. 8 inches high. Blooms June and July.

***Garganica**

A very choice gem for the Rock Garden. It is very hardy, blooms from late June to September. Is a heavenly blue, and has trailing habit of growth, but at the same time is neat. The foliage is almost as distinctive and attractive, as the flower; 3 to 6 inches high.

Price: 50c each, \$5.00 per dozen

CENTAUREA (Knapweed)**Montana**

The Perennial Cornflower. Producing large, violet blue flowers from July to September. 2 feet high.

CHELONE (Shellflower)**Barbata**

Hardy border perennial of Pentstemon like habit, producing long spikes of brilliant, scarlet flowers. Has not been grown very extensively in this country as yet. Height 3 feet. July to September.

Shell Pink

A delightful new form of the above, being the same hardy border plant, but the color is a wonderful shell pink, and the plant grows about 24 inches high. It comes into bloom in July and if the first bloom is cut back after the flowers have faded, it will send up second and third growth to carry the bloom into early September.

Price: 50c each, \$5.00 per dozen

Price: 50c each, \$3.00 per dozen, \$20.00 per 100, except where noted

CHRYSANTHEMUM (Shasta Daisy)**Elder Daisy**

One of the finest and earliest Shasta Daisies we have ever seen. Begins to flower early in May, producing a profusion of large glistening daisy like white flowers on strong stems. 2 feet high. Is splendid in the border and cannot be excelled as a cut flower in the early season. Very hardy and adaptable to all types of soil but requires full sun for proper development.

King Edward VII.

Pure white, large flowering type; blooming in July. 2½ feet.

CONVALLARIA (Lily-of-the-Valley)

The most familiar hardy perennial we list. An excellent plant for shady situations. Spikes from 8 to 10 inches high. Small, bell shaped pure white flowers, blooming in early Summer. Very fragrant.

COREOPSIS (Tickseed)**Lanceolata Grandiflora**

Rich golden yellow. One of the finest flowers for cutting ever introduced to cultivation. Height 3 feet. June to September.

DAPHNE (Garlandflower)**Cneorum**

The beautiful, low growing evergreen shrub, of trailing habit, covered with garlands of fragrant pink flowers from mid-April to the end of May. A most adaptable hardy plant, ideal for the herbaceous border, edging the shrubby border or in the rock garden. \$1.50 per plant, \$15.00 per dozen.



CHRYSANTHEMUM MAXIMUM (Shasta Daisy)

Delphiniums

If you are not acquainted with our Delphiniums, a treat is in store for you. Genius has been defined, as "a capacity for taking pains," and if you could have followed our experts all Summer and noted the infinite care and patience exercised in the selection of our named varieties, you would then see why our Delphiniums lead the world. No expense is being spared to keep up the high standard.

You cannot afford to miss these gorgeous flowers. Place your order early enough in the Spring, so we can guarantee you satisfaction.

Revel with us to your heart's content in our Delphiniums and learn true gardening pleasure.

CULTURAL NOTES

Good drainage is of prime importance in growing all types of Delphiniums. If the ground is heavy, mix coal ashes or sand to lighten the soil. Plant 18 inches apart each way in groups of three and five.

The ground should be deeply dug and pulverized and lime applied at the rate of a double handful to each square yard before the plants are set.

Lime should be applied every Spring and Fall after the plants are growing. After blooming, if the flower stalks are cut back to within 4 inches of the ground and bone meal is worked in near the crown, the plant will bloom several times during the season. Bone meal applied at the rate of a handful to each plant will be sufficient fertilizer.

After the ground is frozen, cover the crowns lightly with straw or marsh hay. Never, under any circumstances, mulch with manure.

Mildew and other fungus diseases may be controlled by spraying the crowns with Bordeaux or some good fungicide. When black rot is discovered, remove the plants and several inches of dirt, where it has been growing, and disinfect the ground with Semesan. There is no cure for this dread disease. An ounce of prevention is truly worth a pound of cure with this disease.

Study your plants and their culture to grow Delphiniums well. With the present day varieties you can get more pleasure and satisfaction out of growing Delphiniums than any other hardy perennial. For best results use the varieties listed on the succeeding pages.

NAMED VARIETIES

Our named varieties are all double and exceptionally large individual flowers. Only the very best are selected for this group and we would suggest that as we have a limited supply of some varieties, that we be permitted to substitute in the nearest color and type we have to the variety you send for.

BLUE DARLING

Very light blue with just a suggestion of mauve in the inner petals. A glorious spike fairly compact, the individual flowers are quite round and have unusual black centers dusted with gold.

CLARICE

Large, double soft pink flowers forming a compact spike. One of the best in light shades.

COUNTESS COWLEY

The spike is magnificent, the eye is black and the flowers are of splendid shape and substance. The outer petals are sky blue and the inner petals are varying shades of mauve. It is very double and in all respects a gorgeous type of Delphinium.

DUSKY MONARCH

Deep purple with dark bee center, enormous spike of flower. Well-known variety, 4 to 5 feet high.

JAMES W. KELWAY

Bold, tall spikes, clear bright blue and deep mauve with a distinct white center combines well with the light or dark varieties; very vigorous growth and about 5 to 6 feet high.

LADY BERTHA

Sister to "Lady May" in type, very pale mauve and blue with dark irregular center.

LADY GWENDOLIN

Another lovely sky blue in the group of light blues. Back of the large white center, there is a glow of violet blue.

LADY MAY

Another of the type of loose open spikes; large double flowers of light blue and mauve shades with inner petals touched and edged with black and a dark center.

Price: \$3.00 each, \$30.00 per dozen, except where noted



LE DANUBE

Lovely pale blue with delicate lilac pink centers. An old variety, but one that is very popular; not prone to disease and is wonderfully free flowering.

LOVELY

Outer petals porcelain blue with mauve pink inner petals and clear white eye. A magnificent spike of flower. 5 feet high. Truly "Lovely."

MILLICENT BLACKMORE

Soft medium blue and violet mauve with black irregular center.

MRS. J. A. WATSON

Double soft blue inside petals with rosy mauve tips and striped black center. One of the newer varieties with medium tall spikes.

MRS. CHRISTIE MILLER

Beautiful creamy white, double flowers open spike and while not as tall as the blue hybrids, is very striking when grouped with the dark blues.

MRS. NEWTON LEES

Mauve edged with Chinense blue with a very distinctive tan center, very full double flower to be classed in the group of dark shades.

MRS. TOWNLEY PARKER

Very lovely clear light blue with a double honey colored center. Very tall compact spike, an outstanding member of the group of light shades.



MRS. FOSTER CUNLIFF

Outer petals soft sky blue, inner petals delicate mauve pink with a striped black center. Very double and frilled and one of the best of our group of light varieties.

PURPLE GLORY

A rich purple with pronounced white eye. The double, cup-shaped flowers are closely placed on tall, stately spikes.

QUEEN MARY

A charming combination of light blue and pink, with a pure white center. Tall, well filled spike and a general favorite with all who see it.

QUEEN MAUVE

Lovely, deep mauve with light center, particularly attractive contrast when planted with Purple Glory.

SIR DOUGLAS HAIG

A fine spike of medium blue and rosy mauve combined with a dark center; a splendid color contrast with "Lovely" or "Clarice."

VIOLET ROBINSON

Very dark rich purple outer petals tipped with bright blue, very prominent white center, striped with purple.

WEDGEWOOD

Wide open double flowers closely spaced on a splendid spike. The crested white center outlined against the lavender blue petals strongly suggests the name.

**"Named Varieties" at \$3.00 each per plant
\$30.00 per dozen**

Light

Clarice
Countess Cowley
Lovely
Mrs. C. Miller
Mrs. F. Cunliff
Queen Mary

Light

Mrs. T. Parker
Lady May
Lady Bertha
Blue Darling
Lady Gwendolin

Medium

Le Danube
Mrs. A. J. Watson
Queen Mauve
Wedgewood
Millicent Blackmore

Dark

Dusky Monarch
James W. Kelway
Purple Glory
Sir D. Haig
Violet Robinson
Mrs. Newton Lees

LORD LANSDOWNE

For those interested in adding clear bright delphinium blue to their gardens, the color that "carries" so well, we would suggest groups of "Lord Lansdowne" in the Perennial border. As this is a single variety, we are listing it at \$1.50 per plant; \$15.00 per dozen.

We cannot too strongly emphasize the gardenesque value of this lovely blue with the clear white eye, that makes such a splendid showing.

"SEPARATE COLORS"

Fine Types—not named, selected in three colors, light blue, dark blue and "shades of mauve."

Price: \$1.00 each, \$10.00 per dozen

"RUN OF FIELD"

In this group the plants are the same age and size, as the above, but are not marked, as to color or type. The customers are always delighted with the assortment, as no two are exactly alike.

Price: 50c each, \$5.00 per dozen

OTHER TYPES**Belladonna**

Sky-blue, beautiful sprays; large flowers with white centers, one of the best known. Height 2 to 3 feet. Blooming June and July.

Chinense Blue

Clear bright Chinese blue, a splendid carrying color in the garden. 20 to 24 inches high. Blooms June to frost.

Chinense Alba

Pure white form of the above. This variety when used in conjunction with the blue mentioned above is very effective. 20 to 24 inches.

DIANTHUS (*Annie Laurie)

This hardy Carnation blooms from May until November, is a delight to all who grow it. The color is a clear orchid pink with wine red center. It is fragrant and perfectly hardy and will do well in sun or partial shade, but prefers a sunny location.



DELPHINIUM

Price: 50c each, \$3.00 per dozen, \$20.00 per 100, except where noted



DELPHINIUM

***Arenarius**

Especially suitable for hot, dry situations; loves sand and sun. The blooms are white fringed and fragrant, appearing in June, continuing for several weeks.

***Caesius (Cheddar Pink)**

Sweetly scented and bears a wealth of rose colored flowers in May and June. 6 inches high.

***Deltoides ("Brilliant")**

Plant covered with crimson flowers in June and July. 6-8 inches high. 50c each, \$5.00 per dozen.

***Deltoides Alba**

White form of above.

***Plumarius (Perpetual Pink)**

The old-fashioned hardy pinks with that elusive spicy clove fragrance. In color, they range from white with red eye to deep pink. We do not have any separate colors, but they are all such charming shades of pink that they would harmonize with any group of plants where pinks might be used. These delightful plants require well drained soil and full sun, and may be kept in bloom from June to late Summer if the dead blooms are kept cut back. Suitable for Rock Garden or borders.

DICTAMNUS**(Gasplant or Burningbush)**

An old garden favorite which has a strong smell of lemon and will sometimes give a flash of light on a sultry Summer evening, when a lighted match is held near the flowers; hence the name. Succeeds well in partial shade or full sun. Should not be moved after once established.

Fraxinella Rubra

Rosy pink blooms in early Spring; glossy, handsome foliage throughout the season. 3 feet high, suitable for border or specimen plant. 75c per plant, \$7.50 per dozen.

Fraxinella Alba

Pure white form of above. 75c per plant, \$7.50 per dozen.

DIELYTRA (Bleedingheart)**Eximia**

Fringed Bleedingheart. A dwarf Bleedingheart that is equally happy in the sun or shade and literally blooms all season. It grows about 12 to 15 inches high, has very finely cut foliage and graceful racemes of pink, heart shaped flowers. It comes into bloom in May and flowers continuously until late October. This delightful little plant is at home in any soil or location. 50c per plant, \$5.00 per dozen.

Spectabilis

Graceful, heart shaped, pink flowers; one of the choicest memories of old-fashioned gardens. Easily cultivated in borders and wild gardens. Especially valuable for planting in shady spots. 2 feet. 75c per plant, \$7.50 per dozen. April and May.



DIELYTRA

DIGITALIS (Foxglove)

A very attractive addition to the herbaceous border, thriving in sun or partial shade in light, rich loam. Blooming in June and July.

Alba **Rose** **Purple**

Isabellina

This is a Perennial Foxglove that has three or four flowering spikes of creamy yellow and comes into bloom with the Belladonna Delphiniums, making a charming combination when planted together. About 2½ feet high, and the best of the yellows.

The Shirley Foxglove

Exceptionally tall stately plants of very vigorous growth with wonderful blooming spikes, 3 feet long. In assorted colors only, ranging from palest pink to deepest rose with crimson dots.

DORONICUM (Leopardbane)**Excelsum**

A very showy, daisy-like flower of clear bright yellow, blooming in April and May. The most pleasing color scheme results when this is planted with Phlox divaricata laphami, as they bloom at the same time. Very hardy and succeeds well in full sun and the usual garden soil. 1½ feet high. 50c per plant, \$5.00 per dozen.



ERIGERON (Page 63)

Price: 50c each, \$3.00 per dozen, \$20.00 per 100, except where noted

ERIGERON (Glabella)

Large violet blue daisy-like flowers with yellow centers. Blooms in June and July, and grows about 18 inches high.

Pink Pearl

A new variety in soft mauve pink, makes a charming combination with the Japanese Iris "Violet Beauty"—blooming from June to end of July.

**EUPATORIUM (Hardy Ageratum)
Conoclinium or Coelestinum**

A splendid border plant with lavender blue, Ageratum-like flowers, adding blue to the border from August to frost. 1½ to 2 feet high.

**FUNKIA (Plantainlily)
Lancifolia**

Very useful for borders and in partial shade. Late in season it produces a spike of lavender flowers. Plant does not attain a height of over 10 inches, but flower stalks will run up to about 2 feet.

**GAILLARDIA (Blanketflower)
Grandiflora**

One of the best known Hardy Perennials, growing to a height of about 20 inches. Blooms from early June until frost. Flowers rich red brown, edges of petals bright golden yellow.

**GEUM (Avens)
*Heldreichi**

A new addition to our catalogue this year with the great advantage of being very hardy and blooming most of the Summer from June until frost. An erect, neat plant, producing an abundance of bright orange yellow flowers about 1 foot high. Likes a well drained, sunny location. 50c each, \$5.00 per dozen.

Lady Stratheden

A recent introduction in great favor, having all the good qualities of Mrs. Bradshaw; the flowers are a bright golden yellow, blooming from June to October. Perfectly hardy, but requires full sun and a fairly light soil.

Mrs. Bradshaw

A new, large, double, scarlet variety, blooming the greater part of the Summer and Fall. Height 15 inches.

**The Better Gypsophila
BRISTOL FAIRY**

With double flowers almost as large as the annual babysbreath and every bit as white, as lasting and easily handled as the usual double sort, it is more valuable than either.

Bristol Fairy has all the virtues of the popular Gypsophila paniculata flore-pleno as a garden and landscape subject. It is sturdier, more graceful, and has much more distinct white flowers. Best of all, it is an all-Summer plant, blooming periodically from June till frost, and does not have to be concealed or replaced like the old kind does when it is through blooming.

75c each, \$7.50 per dozen

HELENIUM (Helenflower)

This magnificent perennial during its blooming season from early August until middle of September, literally produces hundreds of beautiful from yellow to bronze colored flowers. The flowers on one and the same plant vary in color according to their growth and different stages of development. No prettier sight graces the garden than a well developed border of Heleniums.



GYPSOPHILA—BRISTOL FAIRY

Price: 50c each, \$3.00 per dozen, \$20.00 per 100, except where noted

HELENIUM—Continued

Autumnale Superbum

Broad, spreading heads, deep, golden yellow flowers. One of the most striking flowers in cultivation. 5 to 6 feet.

Autumnale Rubrum

Similar to Superbum, but has bright, terra-cotta red flowers; makes a wonderful display during the month of September. 5 to 6 feet.

***HELIANTHEMUM (Rockrose)**

An evergreen rock plant that makes a very beautiful dark green dense growth during one season. It fills spaces between rocks and softens edges of shelving rocks. Besides its outstanding value in the rockery, it makes a beautiful edge for the hardy border, and will grow well on sunny dry banks.

The plants are covered with dainty little rose like flowers during June and July.

The varieties we list are all much alike in habit but differ, as to color:

Creamy White Yellow Orange Bronze
Double Crimson Salmon Pink

HELIOPSIS (Orange Sunflower)**Zinniaeflora**

Double flowering type of the orange Sunflower, growing 3 feet high. Flowers July and August.

HEMEROCALLIS (Daylily)**Aurantiaca**

Bright orange Daylily, 2½ to 3 feet, sweetly scented. Blooms in July.



HEMEROCALLIS
(Daylily)



HESPERIS

Citrina

Beautiful, light, lemon colored flowers, blooming in August and September, after the other varieties are past their bloom. Tall slender stems 4 feet high.

Dr. Regel

Deep orange, beautiful, large, wide open flowers; very fragrant; blooms June and July. Height 2 feet.

Flava

Fragrant clear yellow flowers. Blooms earliest of these charming Lilies, coming in May and June, and is useful as a cut flower as well as in the herbaceous border. 3 feet high.

Gold Dust

Bright yellow flowers, buds and reverse of petals bronzy gold; flowering in May and June. 2 to 3 feet high.

Thunbergi

Blooming in late July. This comes after the other varieties. Is a rich, clear lemon yellow. 3 feet high.

HESPERIS (Sweet Rocket)

Showy, terminal, pyramidal, fragrant spikes, resembling stocks; blooming from June to August. Splendid for naturalizing in semi shady places. 2 to 3 feet. In separate colors—lavender and white.

Price: 50c each, \$3.00 per dozen, \$20.00 per 100, except where noted

HEUCHERA (Coralbell)

Few hardy Perennials lend themselves to as many uses in the garden, as Heuchera. It makes a beautiful border with its rosettes of heart shaped leaves, that remain green most of the Winter.

From late June to September they send up slender spikes 18 inches high, covered with small bright coralbells. It is also ideal in the Rock Garden and fills an important blooming period in the herbaceous border. As a cut flower, it keeps well and is most attractive used with other flowers for a table decoration.

This year we list two improved varieties.

Plume De Feu

Brilliant orange scarlet.

The Shirley

A very tall variety, a deep shade of coral red.

Sanguinea

Pale pink to vivid crimson.

Price: 50c each, \$5.00 per dozen



HOLLYHOCKS

HOLLYHOCK

No old-fashioned garden is complete without Hollyhocks. Their stately spikes produce bold effects that cannot be obtained with any other flower. We offer the best assortment of double kinds.

Double Newport Pink Double Scarlet
 Double Yellow

Price: 50c each, \$3.00 per dozen, \$20.00 per 100, except where noted



IBERIS SEMPERVIRENS

HYPERICUM

***Olympicum**

Grayish green foliage bearing large golden flowers in June and July. 6 to 8 inches high.

IBERIS (Hardy Candytuft)

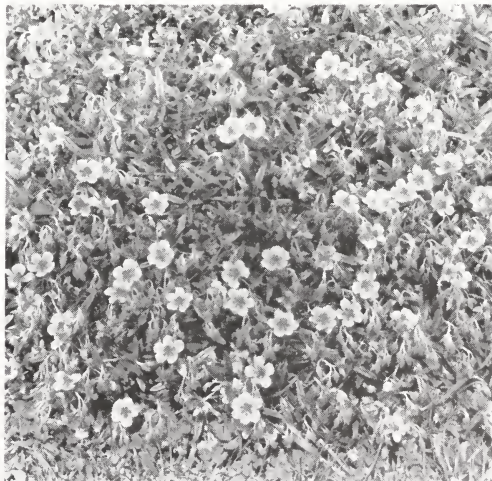
Among the many species of plants particularly suitable for dwarf beds, borders and the rockery, none surpass the hardy Candytufts in making a rich showing during their flowering season. The foliage also is quite ornamental, being evergreen most of the Winter.

***Gibraltarica**

Delicate pink; dwarf in habit and completely covered with small pink flowers. Mid-April to mid-May.

***Sempervirens**

Pure white flowers which completely cover the plants in May. About 15 inches high, and splendid for edging, borders and Rock Gardens.



HELIANTHEMUM (See page 64)

Tall Large Flowering Bearded Iris

FLEURS-DE-LIS

Between Tulip time and Rose time the mainstay of the garden for masses of color is found in the modern forms of the bearded Iris. The all-pervading loveliness of a garden well planted with the choicer forms of the older and the newer introductions is breathtaking. In no flowers are returns surer or more satisfying.

Buy Irises, plant Irises, until you have a good collection, and when the lure of May and June is upon your garden you will agree that you have never had so much "carefree" beauty.

CULTURE AND PLANTING

Do not use manure. Lime the thoroughly prepared bed well and give an annual top-dressing of lime in the Fall, with a top-dressing of bone meal in early Spring. Do not plant in deep shade. Open woodland paths, if well drained, make admirable locations for broad masses of Iris. In planting, spread fibrous roots as much as possible and barely cover the rhizomes. Space 3 feet apart and wait for clumps to form; or 1 foot apart for more immediate effect.

The ideal time for planting Iris is during the months of July, August and September; when they have finished flowering, and unless our customers particularly request Spring delivery, we will ship all Iris orders during these months.

PRICES AND QUALITY OF ROOTS

Strong, single roots are furnished at the prices quoted and every care is exercised to have the plants true to name. Your satisfaction is our success.

In the case of rare varieties where stock is limited, orders will be filled in *sequence of receipt* and accepted subject to stock in hand, but *will not be shipped until after the blooming season*, preferably in early August.

In the description, "S" is used to designate the standards or upright petals; "F" the falls or drooping petals.

Standard Varieties

AFTERGLOW (Sturtevant)

Grayish lavender, shading to yellow; fine in garden effects. 3 to 4 feet. 50c each, \$5.00 per dozen.

ALCAZAR (Vilmorin)

A branching plant, tall and stately, with a long flowering season. S. light mauve, F. deep rich purple. First class certificate, London. 40 inches. 50c per plant, \$3.50 per dozen.

AMBASSADEUR (Vilmorin)

S. smoky reddish satin in paler tones than the deep rich velvety maroon falls which are held at right angles. A tall regal plant and considered one of the best of late introductions. Award of Merit, London. Certificated by National Horticultural Society of France. 75c per plant, \$7.50 per dozen.

ARNOLS

Deep toned pinky bronze blended bicolor with rich falls. Excellent planted as an accent with the warm white of Innocenza and the rose of Her Majesty. 32 to 34 inches high. 50c each per plant, \$3.50 per dozen.

BALLERINE

Large ruffled flower of soft mauve color. A tall, vigorous form of Pallida; very fragrant. 4 feet high. \$1.50 per plant.

BARONET

S. chicory blue. F. violet blue. 50c per plant; \$2.50 per dozen.

BEACONFIELD

Grayish white, peppered reddish purple. 50c per plant, \$2.50 per dozen.

BEAUTY

Pale blue. 50c per plant, \$2.50 per dozen.

BLUE JAY (Farr)

A tall, late blooming variety in good "blues," bright and dark. 3 feet. 50c per plant, \$3.50 per dozen.

CATERINA

Soft bluish lavender. 50c per plant, \$2.50 per dozen.

Price: 50c each, \$3.00 per dozen, \$20.00 per 100, except where noted

CAPRICE (Vilmorin)

S. and F. claret, shading to white at the center of the rather wide open flower. Very charming planted with *Flavescens* against a not too heavy tracery of green. 50c per plant, \$2.50 per dozen.

CELESTE

Light lavender blue. 50c per plant, \$2.50 per dozen.

CLUNY (Vilmorin)

A large flowered mauve of an unusual height for so early a bloomer. 48 inches. 50c each, \$5.00 per dozen.

DALILA (Denis)

A new French introduction of great beauty. S. flesh white; F. rich red with very little suggestion of pink. Free in bloom and distinct in color. A seedling from I. Ricardi. Fall delivery only. 50c each, \$5.00 per dozen.

DALMARIUS

S. satiny gray. F. lavender with yellow beard. 50c per plant, \$2.50 per dozen.

DAWN (Yeld)

Pale yellow flower. The plant is of unusual vigor and freedom in bloom and its creamy mass makes happy association for the deeper colored Irises. 32 inches. 50c per plant, \$2.50 per dozen.

DELICATISSIMA (Millet)

Late pale pink *Pallida*. Delicious fragrance. 36 inches. 75c each, \$7.50 per dozen.

DEJAZET (Vilmorin)

Certificate, Paris. A superb flower of dusky orange rose, deeper in the falls. Early in bloom and plant medium in height. Stock limited. 50c per plant, \$5.00 per dozen.

DOROTHEA

S. pearly lavender gray. F. touched with deeper lavender. 50c per plant, \$2.50 per dozen.

EDOUARD MICHEL (Verdier)

The true variety is scarce. Wide spreading blossoms of deep, wine red on 3 foot stems. An imposing Iris when well grown and placed among creamy whites or pale yellow. Award of Merit. 50c per plant, \$3.50 per dozen.

ELDORADO

Yellow brown and heliotrope. 50c per plant, \$2.50 per dozen.

FAIRY

White, touched with blue, delightfully fragrant. 36 inches. 50c each, \$3.50 per dozen.

FLAVESCENS

Soft creamy yellow. No Iris is more valuable in the garden. 30 inches. 50c per plant, \$2.50 per dozen.

FRITJOF (Intermediate)

A fine, purple bicolor in large flower, with a long blooming season. 50c per plant, \$3.50 per dozen.

Price: 50c each, \$3.00 per dozen, \$20.00 per 100, except where noted



GERMAN IRIS

**GERMANICA TYPE
(Common Early Blue Flag)**

Violet purple, free flowering and effective with yellow Tulip, Mrs. Moon. 50c per plant, \$2.50 per dozen.

INNOCENZA

S. and F. ivory white, slight reticulation at throat, late blooming and valuable. 26 inches. 50c per plant, \$3.50 per dozen.

IRIS KING

S. old gold. F. rich maroon bordered yellow. 50c per plant, \$2.50 per dozen.

ISOLINE (Vilmorin)

S. soft yellow pink; F. deep old rose. A very large flower on 3 foot stems. 50c per plant, \$3.50 per dozen.

JEANNE D'ARC (Vilmorin)

A wide open flower with ruffled edges lightly traced in pale lilac, with the entire style branches a fresh, clear lilac. 32 inches. 50c per plant, \$2.50 per dozen.

JUNIATA (Farr)

4-foot stems carry large, violet flowers above. noticeably fine flowing foliage. Excellent in every way. 50c per plant, \$3.50 per dozen.

KOCHI

S. and F. deep black purple. An effective early blooming Iris, not so well known as it deserves. 2 feet. 50c per plant, \$2.50 per dozen.

LEONIDAS (Barr)

A very handsome, tall Pallida type. S. clear lavender; F. several shades deeper and hugging the stem, making the form an unusual but attractive one. Very large flower 3 feet. 50c per plant, \$2.50 per dozen.

LENT A. WILLIAMSON (Williamson)

An American introduction which scored the highest mark in the recent Symposium conducted by the American Iris Society. It is massive in growth and flower. S. lavender violet and F. velvety Pansy violet. 42 inches. 50c each, \$5.00 per dozen.

LOHENGRIN

A. M., R. H. S. A large flower, both S. and F. in shades of Cattleya mauve; petals very responsive to the strength or softness of the light. A plant of vigorous habit and good foliage. 32 inches. 50c per plant, \$2.50 per dozen.

LORELEY

S. clear pale yellow. F. raisin purple with yellow edge. This variety possesses in a superlative degree what the garden colorists call "carrying-quality." No other Iris in our collection is more admired. 50c per plant, \$2.50 per dozen.

LORD OF JUNE (Yeld)

Free blooming, huge flowering Iris in pale blue. 36 inches. 75c each, \$7.50 per dozen.

MADAME CHEREAU

S. and F. white, frilled clear blue; very lovely. 3 feet. 50c per plant, \$2.50 per dozen.

MANDRALISCAE

S. deep blue; F. violet mauve with pale yellow, striped throat; 3½ feet high. 50c per plant, \$2.50 per dozen.

MAORI KING

Yellow and crimson. 50c per plant, \$2.50 per dozen.

MARY GARDEN

Cream heavily sanded plum. 50c per plant, \$2.50 per dozen.

MONSIGNOR (Vilmorin)

A late flowering variety in rich coloring of purple and violet. The freedom of bloom makes it desirable for a strong note of color among the later blooming Irises. 2 feet. 50c per plant, \$2.50 per dozen.

MOTHER-OF-PEARL (Sturtevant)

"A flower made of the fabric of dreams." The name adequately describes the color. A vigorous plant with tall stately spikes bearing large flowers. 4 feet high. 50c per plant, \$5.00 per dozen.

MRS. DARWIN

Pure white with violet at base. 50c per plant, \$2.50 per dozen.

MRS. ALAN GRAY (Foster)

S. and F. soft pinkish lilac. Blooms with the intermediates and invariably for us sends up spikes of bloom in the Autumn. No Iris is lovelier in mass. 30 inches. 50c per plant, \$3.50 per dozen.

MRS. WILMOTT

Fine white, sometimes washed blue. 50c per plant, \$2.50 per dozen.

NIBELUNGEN

S. fawn. F. bronzy purple edged fawn. 50c per plant, \$2.50 per dozen.

OPERA (Vilmorin)

Certificate, Paris. Of glorious coloring in velvety rich, deep red purples. A fine flower of good shape. 33 inches. 75c per plant, \$7.50 per dozen.

ORIFLAMME (Vilmorin)

Award of Merit, London; Certificate, Paris. Immense handsome flowers of light blue and purple, always admired. 30 inches. 50c per plant, \$5.00 per dozen.

OTHELLO

S. rich blue; F. deep dark, velvety violet. 30 inches. Still unsurpassed among the dark sorts. 50c per plant, \$2.50 per dozen.

PALLIDA DALMATICA

S. and F. soft lavender; very fragrant; exquisite as a cut flower; superb in the hardy border. 3 to 4 feet. 50c per plant, \$2.50 per dozen.

PERFECTION

S. light blue; F. black violet. A very free blooming sort and most effective as a dark foil for the lighter colors. 30 inches. 50c per plant, \$2.50 per dozen.

PRINCESS BEATRICE

A selected form of Pallida Dalmatica with heavy textured lavender blue flowers. 75c per plant, \$7.50 per dozen.

PLUMERI

S. rose mauve with metallic shadings. F. deeper mauve. 50c per plant, \$2.50 per dozen.

QUAKER LADY (Farr)

S. smoky lavender, shaded with gold; F. amethyst blue with yellow shadings. Styloid petals and beard yellow. To emphasize its charm of coloration, plant with Aurea and Mrs. Neubronner. 50c per plant, \$2.50 per dozen.

QUEEN ALEXANDER

Mauve blend. 50c per plant, \$2.50 per dozen.

QUEEN OF MAY

S. and F. soft lilac rose, fragrant. One of the most charming of the "pink" Pallidas. 32 inches. 50c per plant, \$2.50 per dozen.

RHEIN NIXE

A. M., R. H. S. Standards clear white; F. rich raspberry purple with white edge. Tall, vigorous branched spikes. 3 feet. 50c per plant, \$2.50 per dozen.

ROSE UNIQUE

Deep pink. 50c per plant, \$2.50 per dozen.

Price: 50c each, \$3.00 per dozen, \$20.00 per 100, except where noted

SHERWIN WRIGHT

A deep yellow, taller than Mrs. Neubronner. 50c each, \$3.50 per dozen.

SHEKINAH (Sturtevant)

Clear lovely yellow, deepening in the center. 34 inches. 75c each, \$7.50 per dozen.

SIBIRICA EMPEROR (Japan)

Award of Merit, London. Deep violet blue. Large flowers borne well above the foliage on 4-foot stalks. A clump of three years' standing makes a stunning garden feature. Stock limited. 75c each.

SIBIRICA, Variety ORIENTALIS

These are grassy leaved Irises retaining lovely flowering foliage throughout the season and blooming just at the close of the bearded Iris season. The delicately poised blossoms are attractive and valuable both for cutting and garden decoration.

White. 50c per plant, \$2.50 per dozen.

Shades of Blue. 50c per plant, \$2.00 per dozen.

TAMERLANE

S. silvery blue with deeper shadings. F. copper purple with yellow suffusion. 50c per plant, \$2.50 per dozen.

WHITE KNIGHT (Saunders)

A clear white of compact and pleasing form. 30 inches. 50c per plant, \$3.50 per dozen

WYOMISSING

S. creamy white suffused rose. F. deep rose shading to flesh. 50c per plant, \$2.50 per dozen.

In our regular Iris list, we have about forty varieties in a wide range of colors that we have listed at \$2.50 per dozen.

From these varieties we are making a special offer for those starting new gardens or wishing to make Iris borders—a choice of the following:

- 3 each of 10 varieties listed at \$2.50 per dozen;
30 plants \$4.50.
- 3 each of 20 varieties listed at \$2.50 per dozen;
60 plants \$7.00.
- 3 each of 30 varieties listed at \$2.50 per dozen;
90 plants \$9.00.

Dwarf Irises

***BLACK MIDGET (McKinney)**

Almost soot black buds. Flower dark purple with edges of standards and falls much lacinated. Good foliage throughout season. Free in bloom and in height 8 to 10 inches. For several successive seasons has bloomed again in early October. \$1.50 each.

***CRISTATA (Evansia)**

A dainty creeping species; flowers rich amethyst blue, striped orange; increases rapidly. A little gem for borders, rock work or low massing. It is happier in locations that are shaded a part of the day. Given these conditions and time to mass, it will delight all who try it. 50c per plant, \$2.50 per dozen.

***GRACILIPES**

The most fairy like of all Irises. From among delicate and graceful foliage the small rhizomes send up sometimes as many as six branches, carrying small crested, pinkish lilac blossoms. Delightful for a moist, but well drained place, either in border or Rock Garden. Likes afternoon shade. \$1.00 each. *August delivery only* on Gracilipes. Pot plants only.

PUMILA ATROVIOLACEA

Purple. 50c per plant, \$2.50 per dozen.

***TECTORUM ALBA**

For the top of a low wall or terrace nothing is more lovely than this pure white crested Iris, which blossoms at the same time as the tall bearded sorts. Foliage good. Exquisite variety. Stock scarce. 15 inches high. \$1.25 per plant.

***TECTORUM**

Blue. 50c each, \$5.00 per dozen.

***VERNA**

A native Iris demanding much the same conditions of acid soil required by the Birdsfoot Violet. Deep lavender in blossom with a gold splash and very fragrant. Foliage deep green and persistent. Adapted to the rock garden where special conditions may be created for it. 50c per plant, \$5.00 per dozen.



Price: 50c each, \$3.00 per dozen, \$20.00 per 100, except where noted

Japanese Iris

These magnificent Irises are a truly gorgeous sight and extend the Iris season well into July. The colors are many and brilliant, and add greatly to any garden.

They thrive in any good, mellow clay loam and while they like plenty of moisture during the growing season, flooding with water is not a necessity, as many suppose. It is essential to keep the ground well stirred. Be sure water does not stand over them in Winter.

Price: 50c per plant, \$3.50 per dozen, \$25.00 per 100, except where noted

BETTIE F. HOLMES

The improved "Gold Bound," pure white in color with a midrib of lemon yellow. Flower much larger than Gold Bound, foliage and growing habit superior to any other Japanese Iris in cultivation. Price: \$1.00 per plant, \$10.00 per dozen.

BLUE JAY

Double sky blue, distinct white lines on each petal.

DOMINATOR

Single. A dark violet blue, lighter veinings of orange at base of falls; makes a splendid spot of color in the July garden. Upright standards, very large, horizontal falls.

GOLD BOUND

Double. Large, double white, enriched by a creamy glow, from the gold banded center.

T. S. WARE

Double. A large flower of rich plum color with darker shadings and touch of gold at center.



JAPANESE IRIS

PYRAMID

Double violet purple, veined white in center of each petal.

RED RIDING HOOD

Single; fine amaranth, veined and suffused white.

"ROSE-ANNA"

Double, mauve lavender, darker halo. Petals of soft, crepe like texture, with yellow blotch at base.

TOTTY'S TRUE BLUE

Double; a very beautiful clear blue with a dash of gold at the base of each petal. A very large, double flower; petals with little or no veining and remaining horizontal until faded. A new introduction this year, and a very unusual color in Japanese Irises.

VIOLET BEAUTY

Large, single flower of a rich, dark violet purple, with long, conspicuous yellow center and graceful, crepe like texture. A tall growing variety, very showy in the garden.

Lilies (Cultural Notes)

Most Lily bulbs may be planted either in the Spring or Fall. The most important factor in growing Lilies is that they should have good drainage. Manure or commercial fertilizer should never be allowed to come in direct contact with the bulbs, as this is often the cause of rotting and disease. In planting, dig the hole 6 inches deeper than the bulb is to be set and place some well decomposed leafmold in the bottom of the hole. Over this, place an inch or two of sand. The bulb is then placed on the sand, so that the top of the bulb is 6 to 8 inches below the surface of the ground. A mulch of peat moss or leafmold is very necessary during the Summer, with straw and leaves for Winter covering.



MADONNA LILY

LILIUM AURATUM

(The Goldband Lily of Japan)

Flowering in July and August. Large, pure white flowers with gold band and crimson spots, very fragrant. An easy species to grow. 50c each, \$5.00 per dozen.

LILIUM BATEMANIAE

This beautiful Lily is a warm shade of apricot and is happily adapted to growing in partial shade or full sun. Comes into bloom in July and blooms until the end of August. Height 3 feet. 50c each, \$5.00 per dozen, \$35.00 per 100.

LILIUM CANDIDUM

(Ascension or Madonna Lily)

This is the Lily grown in all old-fashioned gardens; five to eight pure white flowers, borne on stems 3 to 4 feet high. Delphiniums grouped with these beautiful Lilies make a charming combination in the hardy border during the month of June. 50c each, \$5.00 per dozen, \$35.00 per 100.

LILIUM HENRYI

Very similar to Speciosum except in coloring, which is a gorgeous orange yellow with a green stripe down the center of each petal. This Lily blooms in August and September, which makes it very valuable for the late Summer garden. It is perfectly hardy and has no particular soil requirements. 75c each, \$7.50 per dozen.

MELPOMENE

Same as the above, only the blooms are suffused with deep crimson and very striking. 50c each, \$5.00 per dozen.

REGALE or MYRIOPHYLLUM

Flowers white, slightly suffused pink, with a beautiful shade of canary yellow at the center. Delightfully perfumed, reminding one of the Jasmine. Blooms out of doors early in July. Absolutely hardy.

Large size 75c each, \$7.50 per dozen. Small size, 3 bulbs \$1.00, 12 bulbs \$3.50.

RUBRUM MAGNIFICUM

Always satisfactory in the perennial border, perfectly hardy and blooming late into September. Flowers white, shaded and spotted with rose and very fragrant. A graceful stem, 3 to 4 feet high, carries from three to twelve beautiful blooms that open gradually, prolonging the blooming season. 50c each, \$5.00 per dozen.

LILIUM SUPERBUM

One of the hardiest Lilies grown. Has large clusters of bright reddish orange flowers conspicuously spotted with brown. Excellent for planting near streams or for naturalizing among shrubs. Prefers partial shade, but will thrive in full sun if the ground is kept cool with leafmold. Blooms June and July. 4 feet high. 50c each, \$5.00 per dozen.

LILIUM TENUIFOLIUM

This fascinating Lily is imported from Siberia and is one of the best varieties we have for Rock Garden work. It is a very dainty grower with small, narrow leaves and attains a height of about 18 to 20 inches. The flowers are deep scarlet in color and the petals turn back showing the center to its best advantage. Should be planted about 4 inches deep, and is one of the finest of the June Lilies. 50c each, \$5.00 per dozen, \$35.00 per 100.

LILIUM TIGRINUM

(Simplex Splendens)

The well-known Tiger Lily that flourishes in all situations, is hardy and easily cultivated. Bright orange red flowers thickly dotted with purple spots. Admirably adapted for mass plantings against shrubbery. Blooms July and August. 50c each, \$5.00 per dozen.

LIATRIS (Blazing Star or Gayfeather)**Pycnostachys**

Beautiful rocketlike spikes of pale purple blooming in late July and August. Very striking in the border and attracts many butterflies. Grows about 3 to 4 feet high and is very useful as a cut flower.

LINARIA (Toadflax)***Hepaticifolia**

Tiny sky blue flowers with orange throat. Must have full sun in well drained soil. Blooms Spring to frost. 3 inches high. 50c each, \$5.00 per dozen.

LINUM (Flax)***Narbonnese**

Forms a dense spreading growth. Blooms profusely from early May to midsummer. Flowers sky blue, most attractive in Rock Garden or hardy borders, about 18 inches in height.

***Flavum**

This yellow form of the above variety, but more compact in growth, being only a foot high. It is covered with light yellow flowers, during June and July.

***Perenne**

One of the most effective of the blue perennial flowers, growing about 18 inches high and flowers from May to July. When planted in masses, makes a very beautiful show of color.

LYCHNIS (The Lamp Flower)**Chalcedonica**

Most desirable variety, orange scarlet. 3 feet high. June to mid-July.

LYTHRUM (Loosestrife)**Roseum Superbum**

Rose color, robust habit. 4 to 5 feet. July and August.

MERTENSIA (Virginia Bluebells)**Virginica**

Blooms very early in the Spring, making a charming color scheme when planted with *Doronicum* excelsum. Flowers of bright blue, fading to pink and borne on graceful, drooping stems about 1½ feet high. A very desirable addition to every Spring garden.

MONARDA (Bergamot)**Didyma**

Brilliant crimson scarlet flowers, produced in plants about 2½ to 3 feet high, during the months of July and August. Very showy and bright when planted en masse.

Salmonea (Salmon Pink Beebalm)

A very unusual variety with soft salmon pink heads of bloom, particularly pretty for massing. This plant likes a moist situation, and comes into flower during July and continues until September.

Price: 50c each, \$5.00 per dozen

Price: 50c per plant, \$3.00 per dozen, \$20.00 per 100, except where noted



LYCHNIS (The Lamp Flower)

MAZUS***Rugosus**

Trailing growth covered with masses of blue and white flowers. Blooms entire season. 50c each, \$5.00 per dozen.

MYOSOTIS (Forget-me-not)***Alpestris Indigo Blue**

This beautiful bright blue border plant comes into bloom with the earliest Spring flowering bulbs and continues to bloom through May and June. This is a biennial plant, but seeds itself freely and thus carries over from year to year.

***Palustris Semperflorens**

No hardy flower is better known or appreciated than this light blue variety. Early and free in bloom. Perpetual flowering type. Prefers a damp location. 6 inches.

***Ruth Fisher**

A charming new Hybrid of very neat compact form. A great improvement over the old forms, having large bright blue flowers and dark green glossy foliage.

Price: 50c each, \$5.00 per dozen

NEPETA (Ground-ivy)***Mussini**

A most desirable border or rock plant with gray green foliage and covered with masses of pale lavender blue flowers. Blooms from May to November if cut back once during Midsummer. 1 foot high and has a spread of 12 to 15 inches. Is a splendid ground cover and succeeds well in any soil or location. Especially useful in dry, sunny slopes to prevent washing.

NIEREMBERGIA

***Rivularis**

Trailing alpine plant; white, cup shaped flowers with gold centers. July to September. 50c each, \$5.00 per dozen.

PACHYSANDRA (Japanese Spurge)

Terminalis

An evergreen ground cover unsurpassed for its adaptability to all situations and conditions. Chief among its many uses, we recommend it for planting under evergreens, shrubs and in cemetery work. As a border for walks and drives it is most attractive. Also splendid for steep slopes in sun or shade, and for dense shade under any kind of trees. Pachysandra is the only plant to thrive under pine trees. It attains a height of about 8 inches. Plant 6 inches apart each way for best results.

HERBACEOUS PEONIES

Cast-iron in their hardiness, blooming equally well north, south, east and west, in this country, no other flower is so adaptable and so satisfactory. A good, rich soil, open sunny position and plenty of water during their growth is all they need. When planting, place the roots so that the crowns are barely covered with soil.

Assorted Varieties

50c per plant, \$5.00 per dozen, \$35.00 per 100.

PINKS (See Dianthus)



FIREBRAND

Price: 50c each, \$3.00 per dozen, \$20.00 per 100, except where noted

PAPAVER ORIENTALE

(Oriental Poppy)

Mrs. Stobart

On one of our recent trips to Europe we found this gorgeous rose cerise Poppy. The color is most unusual and a joyous addition to all hardy perennial borders. We imported plants of this Poppy. All our plants are grown from cuttings. They are perfectly hardy and will grow in any type soil but require full sun for their best development.

2-year-old plants to bloom this year, \$2.50 each.
1-year-old plants to bloom next year, \$1.00 each.

The Gibson Poppy

A new addition to our list this year is a beautiful orange Poppy that blooms all season. It is of the Iceland type, having tufty fern like foliage out of which rises rich orange flowers on slender stems 8 to 10 inches high. Should have a well drained sunny location and besides being a useful border plant is ideally adapted to the Rock Garden. It is perfectly hardy. 50c each, \$5.00 per dozen, \$35.00 per 100.

The Caronaria Poppy

This is also one of the Iceland type Poppies in beautiful shades of pink with the same habits and growth as the Gibson Poppy. Price: 50c each, \$5.00 per dozen.

Phlox

COMMANDER

Brilliant deep crimson red with deeper red eye. Grows about 20 inches high. Produces a great many spikes of these brilliantly colored Phlox.

ENCHANTRESS

The Elizabeth Campbell shade of soft salmon pink, but having a much more vigorous growth. This is a splendid new variety which we highly recommend in place of the once popular Elizabeth Campbell. 50c each, \$5.00 per dozen.

FIREBRAND

One of the most brilliant Phlox in existence, being a gorgeous orange scarlet, shading to vermilion. This outstanding variety flowers very freely and continues to bloom over a long season. 2½ feet high. Price: 50c each, \$5.00 per dozen.

LOUISE ABBEMA

Very large dwarf, pure white, fine form. 18 inches.

MRS. JENKINS

The most popular white variety so far introduced; splendid for planting en masse; blooms early and profusely.

MRS. MILLY VON HOBOKEN

Lovely soft pink. Large flowers on tall erect stems. A new variety that should be included in every collection.

RHEINLANDER

Beautiful salmon pink with claret red eye. Individual trusses of immense size.

THOR

Deep salmon pink, suffused with a scarlet glow, somewhat lighter in mass effect than General Chanzy. Has unusual gardenesque value.

WANADIS

Lovely light violet, mottled white with a bright purple eye. In mass, a violet blue. Medium height.

THE QUEEN

Recently there has been introduced a beautiful orchid pink variety of the ever popular Phlox, "Miss Lingard," called "THE QUEEN." It has the same early blooming habit, and the upright growth of dark glossy foliage. It is an ideal companion for white and pink Foxglove and makes a splendid showing during the months of June and early July.

**Price: 50c each, \$5.00 per dozen
\$35.00 per hundred**

MISS LINGARD

This is known as the early flowering Phlox, since it comes into flower in May and continues to flower continuously until October, or the very heavy frosts injure it. Height about 2 feet. Color, pure white.



PHLOX, THE QUEEN

Price: 50c each, \$3.00 per dozen, \$20.00 per 100, except where noted

Club Lectures

For all Clubs interested in gardening, we are prepared to furnish a speaker on the subjects listed below:

Spring in the Perennial Gardens

Hardy Garden Roses

Delphiniums

Chrysanthemums

Fall Planting and Winter Covering

Whenever blooming season permits we will furnish samples of the flower under discussion and give practical demonstrations with plants. The speaker will be glad to answer individual questions at the close of the talk.

Arrangement for lectures must be made with the Madison, N. J., office one month in advance of the date of same.



*Phlox Divaricata Laphami

A perennial Phlox of pure gentian blue, growing to a height of 15 to 18 inches; unsurpassed as a border plant when planted in front of Darwin Tulips, since it flowers in May and continues flowering until early July.

No other garden flower blooming at this season shows this rare and beautiful color.

A solid bed of Phlox Laphami is one of the most attractive sights in any garden and we cannot too strongly recommend everyone to try at least a few plants of this remarkable plant.

PHLOX *SUBULATA (Moss or Mountain Pink)

An evergreen creeping plant, excellent for edging the border or in the Rock Garden. Producing masses of bloom in April and May, with moss like foliage; invaluable carpeting for the ground.

*Caerulea

Especially useful in the Rock Garden, owing to the scarcity of blue flowering plants during April and May. This variety makes a neat, compact plant, literally covered with clear, blue flowers equal in intensity to the Phlox divaricata laphami. Truly a little gem, not as yet widely distributed.

*Alba—Pure white

*Lilacina—Light lilac

*Rosea—Rose pink

*Vivid—Bright cerise pink

Price: 50c each, \$3.00 per dozen, \$20.00 per 100, except where noted



PLATYCODON

PLATYCODON (Japanese Bellflower)

Very handsome hardy perennial, with beautiful, bell shaped flowers, much like *Campanula*, blooming in July and August.

Grandiflorum

Very large, deep blue, star shaped flowers. 2 feet.

Grandiflorum Album

Beautiful pure white type of the above. 2 feet.

PLUMBAGO (Leadwort)***Larperntae**

A splendid border or rock plant with deep blue flowers, blooming in September and October; dwarf spreading habit. 8 to 10 inches high.

POLEMONIUM (Jacob's Ladder)**Caeruleum**

Another charming blue Perennial with very pretty feathery foliage and heads of sky blue flowers. Blooms in June and grows about 1½ feet high.

Price: 50c each, \$5.00 per dozen

Richardsoni

Dwarf Polemonium. Bushy compact plant about 15 inches high, border or Rock Garden. Large clusters of ruffled light blue flowers—appear in June and continue intermittently until late August.

Price: 50c each, \$5.00 per dozen

Price: 50c each, \$3.00 per dozen, \$20.00 per 100, except where noted

POLYGONUM (Knotweed)**Cuspidatum**

Noble plant attaining a height of 6 feet, producing long, drooping clusters of white flowers in the axil of each leaf.

***PRIMULA (Primrose)**

Primroses thrive best in a damp situation in semi-shade. Alternative with Forget-me-nots (*Myosotis alpestris*). They make a charming edge for a shady border, or in front of shrubs. There are many colors including white, pale yellow, deep yellow, bronze and deep red and crimson, but the colors blend perfectly and it adds to their charming effect to have all colors grown together. The bloom commences in early May and continues into June. Height 6 to 8 inches. We have large clumps ready for very early planting.

PYRETHRUM**(Persian or Painted Daisy)**

One of the best perennials in our list. It is perfectly hardy, will thrive in any garden soil and in any situation except in dense shade under trees. As a cut flower it is unsurpassed in daintiness and keeping qualities. Blooms in May and June, and if cut back after first bloom will give flowers throughout the Summer and early Fall. Grows about 1½ to 2 feet high.

Atrosanguinea

Deep crimson.

Roseum

Rose colored.

Mixed

White, rose and crimson.

RUDBECKIA**Golden Glow**

One of the best known hardy flowers, blooming from July until September.

Purpurea

Large, showy reddish purple flowers; 4 inches across. 3 feet. July to October.

SALVIA**Azurea Grandiflora**

Blue Sage. A Rocky Mountain native, producing a profusion of beautiful flowers on slender spikes during August and September. Very attractive planted with late flowering white Phlox, or with a background of flowering shrubs. 4 to 5 feet.

Farinacea

"Blue Bedder" (New). A beautiful, deep blue sport of *Salvia farinacea*, more floriferous and a trifle dwarfier in growth, and much more beautiful in color, as it is a wonderful deep shade of blue. Spring delivery only.

SANTOLINA (Lavender Cotton)***Incana**

Silvery white foliage, used for rock border and very largely used for carpet bedding.

SCABIOSA (Pincushion Flower)

Caucasica

Sky blue flower, about 4 inches across, with tufted center, flowering from June to September and attains a height of about 18 inches. Splendid for cutting purposes.

Japonica

Bright blue flowers, flowering from July until September and growing 2 feet high.

***SAPONARIA (Soap Flower)**

Ocymoides

Border plant, growing about 6 inches high, producing masses of bright pink flowers from July to October.

SEDUM (Stonecrop)

***Acre**

Very useful in the Rock Garden or for wall crevices; making thick tufts, covered with very small, bright yellow flowers in the early Summer; creeping flowers, sometimes called "Wall Pepper."

***Album**

This makes a thick mat of gray green foliage, small white flowers blooming in July and August, 3 to 4 inches high, spreading habit, splendid for Rock Gardens.

***Anglicum**

Delicate pink feathery blooms and rosettes of gray, fleshy leaves.



SEDUM

Ibericum

The foliage is practically evergreen, and this is a most attractive addition to the group of Sedums so widely used in Rock Gardens. Flowers are pink and come into bloom in July and continue until September.

***Kamtschaticum**

Numerous yellow flowers in flat heads. Blooms late Summer. 6 inches high.

***Lydiium Glaucum**

Pink blossoms in Midsummer. 4 inches high.

***Reflexum**

Small yellow flowers. 8 to 10 inches high.

Spectabile

Most popular of all the Sedums, producing large, flat heads of rose colored flowers 2 feet high. Mid-August to mid-September.

SIDALCEA

Rosea

An improved variety of a very desirable Border Plant. Lovely rosy pink flowers like miniature Hollyhocks on slender stems, 2½ feet high. Makes a charming combination planted with Delphinium Hybrids and Foxgloves. Also, a good companion plant for Phlox "The Queen." Begins to flower in June and continues for six weeks.

**Price: 50c each, \$5.00 per dozen
\$35.00 per hundred**

SILENE

***Schafta**

The Autumn "Catchfly." Rosy flowers on 6 inch stems. Blooms June to frost.



SIDALCEA

Price: 50c each, \$3.00 per dozen, \$20.00 per 100, except where noted

SPIRAEAS (Meadowsweet)

Very showy plants, either planted in isolated clumps or intermingled with other herbaceous plants in the hardy border. They thrive well in any rich garden soil, but prefer damp positions. Very decorative with beautiful spikes of flower. Many of the varieties we offer below are varieties that have been grown for many years in the gardens of America, and have proved very satisfactory.

**Price: 50c each, \$5.00 per dozen
\$35.00 per 100**

America

Charming lilac rose flowers which hold their color very well over a long period. 20 to 22 inches in height and abundant foliage.

Brunhilde

Very late, tall creamy white flowers borne on long stems, and a profuse bloomer. Produces excellent cut flowers from June until August.

Ceres

Bright rosy lilac with light green foliage, a magnificent variety.

Kriemheilde

One of the most attractive of the late Spiraeas, salmon pink in color.

Mont Blanc

A dazzling white with bright green foliage, dwarf habit. Flowering medium early.

Queen Alexander

Another very fine variety.

Rubens

Very beautiful carmine rose and one of the best liked of the many varieties sent out.

Venus

Is a purplish rose, very tall, late growing variety.

Vesta

Is the bright rosy pink, the earliest of all Spiraeas to flower.

STATICE (Sea lavender)***Latifolia**

A popular border and rockery plant with very glossy leaves and small purplish blue flowers in trusses about 12 inches across, blooming profusely. Height 18 inches. Useful for Winter bouquets.

STOKESIA (The Cornflower Aster)**Cyanea Caerulea**

Very large lavender blue flowers blooming from early July until late October—succeeds well in open, sunny position. A very desirable border plant growing about 1½ to 2 feet high.

Alba

White form of the above.

Price: 50c per plant, \$3.00 per dozen, \$20.00 per 100, except where noted



SWEET WILLIAM

SWEET WILLIAM (Dianthus barbatus)

Possibly one of the best known, free flowering, hardy perennials; easily one of the most attractive flowers in the garden.

Pink Beauty

Beautiful Newport pink color.

Purity

Snow white, one of the best.

Scarlet Beauty

Brilliant scarlet.

TROLLIUS (Ledibouri)

One of the best of these early blooming border plants, grows about 3 feet high, and has gorgeous bright yellow flowers. Attractive foliage that makes a good background for the early blooming bulbs. May to July.

Price: 50c each, \$5.00 per dozen

THYMUS (Creeping Thyme)***Lanuginosus**

Clouds of purple blue flowers. Also excellent for wall garden.

***Serphyllum**

Creeping, wiry stemmed variety used extensively for planting between stepping stones and in the Rock Gardens. Small, purple lilac bloom, flowering most of the Summer. This delightful little plant makes a close, fragrant carpet that may be walked on freely without injury. Grows on hot, dry, sunny banks where it is difficult to establish other plants.



VERONICA

VERONICA (Speedwell) Erica

A very attractive Veronica for the Rock Garden, having a pink Heather like bloom about 8 inches high and blooming more or less through the Summer. 50c each, \$5.00 per dozen.

Longifolia Subsessilis

Also known as the clump "Speedwell." This is one of the handsomest of the Veronica type. It has long spikes of a beautiful deep blue and is frequently used as a cut flower. It attains a height of about 2 feet and flowers from July to September. Grown for cut flower purposes in the hardy border, it is one of the most satisfactory perennials it is possible to procure. \$5.00 per dozen, \$35.00 per 100.

*Repens

Prostrate moss like growth. Pale blue flowers in early Spring.

Spicata

Flowers in June and July; magnificent sprays of bright blue flowers, growing 1½ to 2 feet high.

Spicata Rosea

A splendid hardy member of this family with an exceptionally long blooming period, commencing in June and continuing until frost. The spikes of lovely soft pink grow about 18 inches high and have an abundance of branches if the old spikes are cut away.

*Teucrium

A creeping variety covered with deep blue flowers in June. Most attractive.

VALERIANA (Valerian) Officinalis

Very fragrant, rose tinted flowers, sometimes called garden Heliotrope; flowering June and July. 2 feet high.

Rubrum

Large, flat headed clusters of deep pink flowers. Blooms from late June until August. Height 1½ feet.

VERBENA VENOSA (Hardy Garden Verbena)

This variety is largely used for bedding purposes. It is a strong, thrifty grower about 1 foot high and covered from early Summer until late Fall with its bright purplish heliotrope flowers.

VERBASCUM PHOENICEUM (Purple Mullein)

Producing slender spikes of rosy lavender and mauve purple, about 2 feet high. This unusual plant forms a crinkly rosette of leaves and is most attractive in the Rock Garden where taller plants can be used.

*VINCA MINOR (Common Periwinkle)

One of the best evergreen ground covers making a thick trailing growth in two years. Blooms quite freely in early Spring and occasionally through the Summer and Autumn. Will grow well under trees and is excellent for covering bare slopes and rocky banks.



PLANTABBS

Odorless plant-food tablets made especially to keep your ferns, geraniums, cyclamen, begonias, rubber plants, and other potted plants healthy and growing while inside during the winter. While particularly adapted to feeding indoor plants, being without odor, they will benefit outdoor garden flowers, bulbs, vines, and garden vegetables. They are perfectly safe to use. Box of 75 tablets 50c; 200 tablets \$1.00; 1,000 tablets \$3.50.

Price: 50c each, \$3.00 per dozen, \$20.00 per 100, except where noted



VIOLA APRICOT QUEEN

***VIOLA APRICOT QUEEN**

A fascinating shade of apricot that compels the immediate attention and admiration of all who see it. The plant has a neat, compact habit of growth and blooms freely from Spring to October. The requirements for success in growing this charming Viola are to locate the plants in full sun and to shear them close to the ground twice during the season.

***VIOLA, JERSEY GEM**

The peerless Viola that blooms from April until snow, rich, dark violet color, with long stems and a delicious fragrance. It is perfectly hardy and will grow in any good garden soil, but must have full sun for best results.

VIOLA CORNUTA (Perennial Violet)

***White**

***Yellow Gem**

***Haslemere**

Very pretty hybrid flowers, a charming shade of lilac pink, in the greatest abundance, very neat habit.

YUCCA (Adams Needle)

Filamentosa

Ornamental foliage and flowering plants. Makes a splendid foil for the delightfully fragrant spikes of creamy white flowers produced during June and July. 5 to 6 feet tall.



YUCCA

Price: 50c each, \$3.00 per dozen
\$20.00 per 100, except where noted

Hardy Vines

We have had so much call for Hardy Vines that we have decided to carry the following choice kinds best suited for covering houses, fences and garden walls.



HALL'S JAPANESE HONEYSUCKLE (see *Lonicera*)

AMPELOPSIS VEITCHI

(Boston or Japanese Ivy)

Useful in city and suburbs; its glossy foliage withstands dust and smoke well. Clings to bricks, walls, fences, or rocks. Once established forms a dense, rapid growth. Foliage turns to brilliant, scarlet crimson and orange in the Fall. 3-year-old \$1.25 each, 2-year-old 75c each.

CLEMATIS PANICULATA

(Japanese Virgins-bower)

A very satisfactory flowering vine. Perfectly hardy, of strong, rapid growth, attractive, glossy green foliage producing a profusion of white, fragrant flowers in August and September. Also useful as a trailer on rocky slopes and banks. 75c each, \$7.50 per dozen.

CLEMATIS

Mme. Edward Andre

One of the best of the large flowered Clematis. It is hardy and makes a fine growth. The flowers are deep wine red of large size, and borne in great profusion. Pot plants only. Delivery April 15th. 4-inch plants.

Price: \$1.00 each, \$10.00 per dozen

EUONYMUS

(Broadleaved Evergreen, Bittersweet)

Radicans Vegetus

Very attractive climbing evergreen with aerial rootlets, which makes it self supporting on a stone wall or base of house. Also attractive as a ground cover. In the Fall this produces an abundance of orange scarlet berries which remain on the plant the greater part of the Winter. As an absolutely hardy evergreen wall covering, this plant is unequalled. 50c each, \$5.00 per dozen.

LONICERA

(Hall's Evergreen Honeysuckle)

Halliana

One of the best vines for all purposes, blooms from early Summer to frost. Flowers yellow and white with a delightful fragrance. Very vigorous grower. Splendid covering for banks and slopes. 50c each, \$5.00 per dozen.



AMPELOPSIS VEITCHI

Rock Garden Collections



1 Plant Each
of the following
24 Varieties

24 Plants
\$6.00

Makes a garden 3 ft. x 6 ft.

3 Plants Each
of the following
24 Varieties

72 Plants
\$10.00

Makes a garden 8 ft. x 8 ft.

6 Plants Each
of the following
24 Varieties

144 Plants
\$15.00

Makes a garden 10 ft. x 12 ft.

There is no form of gardening so captivating to the majority of garden lovers as the rock garden.

Rock plants prefer a sunny exposure and good drainage, but do not require special care. A liberal amount of good garden loam mixed with limestone chips, or coarse gravel, forms an ideal mixture in which to grow the plants listed. For fertilizer use bone meal, or very well rotted cow manure moderately.

Aquilegia alpina
Alyssum argenteum
Arabis albida
Arenaria montana
Armeria lauchiana
Aubrietia purpurea
Aubrietia leichtlini
Campanula rotundifolia

Dianthus arenarius
Dianthus caesius
Dianthus deltoides, "Brilliant"
Helianthemum
Hypericum olympicum
Linaria hepaticaefolia
Mazus rugosus
Nierembergia rivularis

Sedum anglicum
Sedum kamtschaticum
Sedum lydium glaucum
Sedum reflexum
Silene schafta
Thymus lanuginosus
Veronica teucrium
Veronica repens

For description, see list of perennials.

Rock Garden Plants

Anchusa myosotidiflora
Arabis flore pleno
Campanula garaneca
Geum heldreichi

Mazus rugosus
 Myosotis, Ruth Fisher
Nierembergia rivularis
 For description see List of Perennials

Price: 50c each, \$5.00 per dozen, \$35.00 per 100

Alyssum saxatile compactum
Alyssum argenteum
Arabis alpina
Arabis albida
Arenaria montana
Armeria laucheana
Aquilegia alpina
Aubretia purpurea
Aubretia leichtlini
Cerastium tomentosum
Campanula carpatica alba
Campanula carpatica blue
Campanula rotundifolia
Dianthus, Annie Laurie
Dianthus arenarius
Dianthus caesius
Dianthus deltoides alba
Dianthus deltoides brilliant
Dianthus plumarius
Helianthemum
Hypericum olympicum

Iberis gibraltarica
Iberis sempervirens
Linaria hepaticafolia
Linum narbonesi
Linum flavim
Linum perenne
Myosotis alpestris, Indigo
 Blue
Myosotis alpestris semper-
 florens
Nepeta mussini
Phlox divaricata laphamii
Phlox subulata caerulea
Phlox subulata alba
Phlox subulata lilacena
Phlox subulata rosea
Phlox subulata vivid
Plumbago larpantae
Primula
Santolina incana
Saponaria ocymoides

Sedum acre
Sedum album
Sedum anglicum
Sedum ibericum
Sedum kamtschaticum
Sedum lydium glaucum
Sedum reflexum
Sedum spectabile
Sileme schafta
Statice latifolia
Thymus lanuginosus
Thymus serphyllum
Veronica repens
Veronica teucrium
Vinca minor
Viola, Apricot Queen
Viola, Jersey Gem
Viola cornuta white
Viola cornuta, Yellow Gem
Viola haslemere

For description see List of Perennials

Price: 50c each, \$3.00 per dozen
 \$20.00 per 100

Dwarf Iris

For description and prices see Catalogue



*Address all
 Correspondence to
 TOTTY'S
 Madison, N. J.*

Flowering and Ornamental Shrubs

A few, well chosen shrubs add year-round interest and beauty to the herbaceous borders and the Rock Garden. The group we list below are especially selected for these purposes.



KOLKWITZIA (*Beautybush*)

BEAUTYBUSH (*Kolkwitzia amabilis*)

An exceedingly handsome ornamental shrub. The foliage and habit are attractive when the bush is out of flower and it is perfectly hardy as far north as Montreal.

It grows 6 to 9 feet high when mature and as much through, erect and twiggy, producing long, arching branches covered in Spring with clusters of small, tubular flowers of the Honeysuckle type, borne in such profusion that the bush is one cloud of delicate pink.

Beautybush has all the merits of a perfect shrub—hardiness, year round beauty in foliage and habit, and an amazing profusion of flowers of beautiful color.

KOREAN SPIREA (*Spiraea trichocarpa*)

This handsome, new shrub is a splendid, healthy plant growing when mature, 4 to 6 feet tall and even greater in diameter, forming a big, dome shaped bush, covered in its season with large, rounded clusters of snowy flowers marked with darker eyes.

It is hardy as far north as Montreal.

3-year-old, 2-3 feet \$2.50 each, \$25.00 per dozen.

2-year-old, 18-24 inches \$1.75 each, \$20.00 per dozen.

2-year-old, 12-18 inches \$1.25 each, \$15.00 per dozen.



KOREAN SPIREA

PHILADELPHUS, BOUQUET BLANC

One of the handsomest of shrubs, which must be seen to be appreciated. Makes a fine specimen for the lawn, and for hedges it is beyond words; the variety is a vigorous grower and throws gracefully arching stems closely set with bouquets of individual white flowers; these sprays look like large ostrich plumes of soft, snowy white. Height 3 feet. Never Winterkills. \$1.00 each, \$10.00 per dozen.

HARDY BOXWOOD (*Buxus sempervirens*)

Unusually fine Boxwood matched specimens suitable for steps or entrance. \$8.00 each, \$15.00 for two. Small size, for hedge, 1½ to 2 feet, \$6.00 each, \$50.00 per dozen.

Individual specimens furnished at the prices listed.

RED BARBERRY

This new Barberry has proved to be very popular, since its distribution, and there are few shrubs to rival it in attractiveness when it is grown in the full sun. It is similar in all respects to the green Barberry, but the foliage is rich bronzy red, similar to the red leaf Japanese

Maple. This variety becomes more brilliant and gorgeous throughout the Summer, and after all the leaves have disappeared in the Winter, it is covered with brilliant scarlet berries, which remain on the plant the entire Winter. 2-yr. plants \$1.00 each, \$10.00 per dozen.

Practical, Dependable Garden Books for the Amateur Written by Experts; Well Illustrated and Substantially Bound

ROCK GARDEN PRIMER

By *Archie Thornton*. An American book written with particular regard for the benefit of those who require information on every minute point connected with the making of a Rock Garden. Amply illustrated with teaching diagrams and reproductions from selected photographs; four Rock Garden views in color. Cloth, \$2.15.

GARDEN GUIDE

By *Various Experts*. A complete handbook for the amateur gardener, containing wonderful chapters devoted to the vegetable, flower and fruit garden, with practical layouts and planting plans. 388 pages and over 275 teaching illustrations. Paper, \$1.10; cloth, \$1.65.

PRACTICAL LANDSCAPE GARDENING

By *Robert B. Cridland*. Takes up all the elements that enter into the beautifying of properties. 91 photographic illustrations, 67 sketches and 33 plans. Cloth, \$2.65.

MILADY'S HOUSE PLANTS

By *F. E. Palmer*. Tells how to care for Palms, Ferns, Rubber Plants, Fuchsias, Jerusalem Cherries and scores of other popular house plants. 100 instructive pictures. Paper, \$1.10; cloth, \$1.35.

ROSE GARDEN PRIMER

By *Eber Holmes*. Gives all necessary information on Rose growing at home. Discusses rose history, origin, care, culture, feeding, watering and planting, insects and diseases, propagation, roses for all climates, classification, etc. 224 pages, 70 illustrations. Cloth, \$1.75.

THE BOOK OF SHRUBS

By *Alfred C. Hottes*. Gives a complete, non-technical, description of each species showing how one differs from another. Discusses under each species its characters, uses, soil, pruning and propagation. A table of varieties gives the height in feet, exposure to plant, soil, color of flowers, season of bloom, color of fruit, etc. 384 pages. Cloth, \$3.15.

FOUNDATION PLANTING

By *Leonard H. Johnson*. Covers the art and science of beautifying by means of plants, the immediate frontage of the house, and, when opportunity serves, its sides and rear as well. 256 pages, 208 illustrations and planting plans. Cloth, \$3.65.

THE WOMAN'S FLOWER GARDEN

By *Jane Leslie Kift*. As its name implies, a book for women on the care of flowers and plants in the home and on their cultivation in the garden. Cloth, \$1.35.

WATER GARDENS AND GOLDFISH

By *Robert V. Sawyer* and *Edwin H. Perkins*. Teaches the amateur the art of growing Waterlilies in a small way and thoroughly covers the establishment and management of the home aquarium. 59 illustrations. Cloth, \$1.65.

1001 GARDEN QUESTIONS ANSWERED

By *Alfred C. Hottes*. Do you know? Why Peonies do not bloom? Why evergreens fail? Why house plants are leggy? Why cut flowers do not keep? Why young fruit trees do not bear? This information and a wealth of other garden facts which hundreds of men have spent their lives in obtaining will be found in this book. 320 pages; copiously illustrated. Paper, \$1.65; cloth, \$2.15.

CITY AND SUBURBAN GARDENING

By *Chesla C. Sherlock*. Discusses every angle of city and suburban gardening, from the landscape problems of the small plot to rock and water gardening. Roses, Peonies, Irises, Perennials, Annuals, Shrubs, Trees, Lawns, etc. 186 pages, 82 illustrations. Cloth, \$2.15.

THE BOOK OF ANNUALS

By *Alfred C. Hottes*. A reliable guide through the season of annual bloom. Over 100 separate species are described with full directions for their culture and uses. Through this book the door is opened to greater success with these charming flowers. 182 pages, 155 illustrations. Cloth, \$1.65.

THE BOOK OF PERENNIALS

By *Alfred C. Hottes*. Devoted to the general principles of growing, using, selecting and propagating perennials, followed by a number of comprehensive lists of perennials suited for different locations and purposes. Over 125 species are discussed individually, together with their culture and requirements. A tabular cultural index, giving species or variety, height, flowering period, color, etc., adds to the value of the book. 200 pages, 93 illustrations. Cloth, \$1.65.

BULBS THAT BLOOM IN THE SPRING

By *T. A. Weston*. All information required in the culture and flowering of newly purchased bulbs and also the harvesting and ripening of such bulbs as are planted in the Fall for Spring display. 60 full page illustrations. Paper, \$1.65; cloth, \$2.15.

MODERN DAHLIA CULTURE

By *W. H. Waite*. Brief, clear, complete; based on the actual operations and results of a practical, experienced grower, propagator and exhibitor. 28 illustrations and 4 color plates. Cloth, \$1.65.

PRACTICAL PLANT PROPAGATION

By *Alfred C. Hottes*. An exposition of the art and science of increasing plants. Appeals to everyone who has to do with seeds and plants, whether amateur or professional. Cloth, \$2.15.

A LITTLE BOOK OF CLIMBING PLANTS

By *Alfred C. Hottes*. The only book obtainable combining all climbing plants, of whatsoever nature, in the one volume. 250 pages. Paper, \$1.65; cloth, \$1.90.

All Prices Postpaid

Send for a copy of our 36-page Book Catalogue describing above books in detail, together with other worth while literature for the amateur

TOTTY'S, Madison, New Jersey

INDEX—Continued

HARDY PERENNIAL PLANTS—Continued

Iberis.....	65
Iris, Bearded, Standard Varieties.....	66-69
Iris, Dwarf.....	69
Iris, Japanese.....	70
Ivy, Ground.....	72
Jacob's Ladder.....	76
Japanese Bellflower.....	76
Japanese Spurge.....	73
Japanese Windflower.....	54
Knapweed.....	58
Knotweed.....	76
Lamp Flower.....	72
Lavender Cotton.....	76
Leadwort.....	76
Ledibouri.....	78
Leopardbane.....	62
Liatrix.....	72
Lilies.....	71
Lily-of-the-Valley.....	58
Linaria.....	72
Linum.....	72
Loosestrife.....	72
Lychnis.....	72
Lythrum.....	72
Mazus.....	72
Meadowsweet.....	78
Mertensia.....	72
Michaelmas Daisy.....	56
Monarda.....	72
Monkshood.....	53
Mullein.....	79
Myosotis.....	72
Nepeta.....	72
Nierembergia.....	73
Orange Sunflower.....	64
Pachysandra.....	63
Papaver.....	73
Peonies.....	73
Periwinkle.....	79
Phlox.....	73-75
Pincushion Flower.....	77
Plaintainlily.....	63
Platycodon.....	76
Plumbago.....	76
Polemonium.....	76
Polygonum.....	76
Poppy.....	73
Primrose.....	76
Primula.....	76
Pyrethrum.....	76
Rockcress.....	54

Rock Madwort.....	53
Rockrose.....	64
Rudbeckia.....	76
Salvia.....	76
Sandwort.....	54
Santolina.....	76
Saponaria.....	77
Scabiosa.....	77
Sea Lavender.....	78
Sedum.....	77
Shasta Daisy.....	58
Shellflower.....	58
Sidalcea.....	77
Silene.....	77
Soap Flower.....	77
Speedwell.....	79
Spiraeas.....	78
Statice.....	78
Stokesia.....	78
Stoncrop.....	77
Sweet Rocket.....	64
Sweet William.....	78
Thymus.....	78
Tickseed.....	58
Toadflax.....	72
Trollius.....	78
Valerian.....	79
Valeriana.....	79
Verbascum phoeniceum.....	79
Verbena venosa.....	79
Veronica.....	79
Vinca Minor.....	79
Viola.....	80
Violet, Perennial.....	80
Virginia Bluebells.....	72
Yucca.....	80

HARDY VINES

Ampelopsis.....	81
Bittersweet.....	81
Clematis.....	81
Euonymus.....	81
Honeysuckle.....	81
Ivy.....	81
Japanese Virgins-bower.....	81
Lonicera.....	81

EVERGREENS AND FLOWERING SHRUBS

Barberry, Red.....	84
Beautybush.....	84
Boxwood, Hardy.....	84
Buxus.....	84
Kolkwitzia.....	84

Philadelphus.....	84
Spiraea.....	84

ROCK PLANTS

Rock Garden Collections.....	82
Rock Garden Plants.....	83

COLOR ILLUSTRATIONS

Chrysanthemums—

Meta J. Bergen.....	7
Single Varieties.....	18
Hardy Varieties.....	26

Roses—

Mrs. Paul Pierson.....	27
E. G. Hill.....	29
Rapture.....	30
Souvenir de Georges Pernet.....	43
Rev. F. Page-Roberts.....	43
Etoile de Hollande.....	43
Talisman.....	44
Betty.....	46
Madame Butterfly.....	47
Chaplin's Pink Climber.....	49
Dr. Van Fleet.....	50
Gloria Mundi.....	52
Novelty European Carnations.....	31
Mignon Dahlias.....	35
Novelty Orchid Flowering Dahlias.....	36-38
Gladiolus.....	39, 41
Hardy Perennial Planting.....	53
Anemone Japonica Alba.....	54
Aquilegia.....	55
Campanula (Telham Beauty).....	57
Chelone (Shell Pink).....	58
Chrysanthemum maximum (Shasta Daisy).....	58
Delphinium.....	60, 61
Hemerocallis (Daylily).....	64

Iris—

Germanica type.....	67
---------------------	----

Phlox—

Firebrand.....	73
The Queen.....	74
Phlox divaricata laphami.....	75
Veronica.....	79
Viola "Apricot Queen".....	80
Yucca.....	80
Honeysuckle.....	81
Rock Garden.....	82
Kolkwitzia (Beautybush).....	84
Korean Spirea.....	84



Vigorous
Sturdy
Luxuriant

Growth

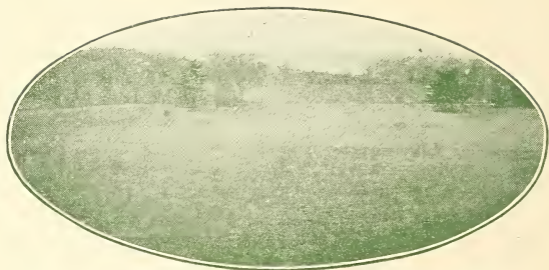
for your

LAWNS
FLOWERS
VEGETABLES



NITROPHOSKA

*The Concentrated
Complete Fertilizer*



So Simple, So Easy, So Pleasant

Are you one of the many, many home owners who want to have a velvety green lawn, a beautiful flower garden, and luscious, tender vegetables—but don't know just how to get them?

Without doubt you believe in fertilization. But you have found that farm manure is difficult to obtain and disagreeable to handle; that ordinary fertilizers are often bulky, dirty and rather smelly; and that, not being an expert on fertilizers, you may buy the wrong kind and not get the results that you had hoped for.

These difficulties have now been overcome. Fertilization is so simple, easy and pleasant with

NITROPHOSKA
15-30-15

The Concentrated Complete Fertilizer

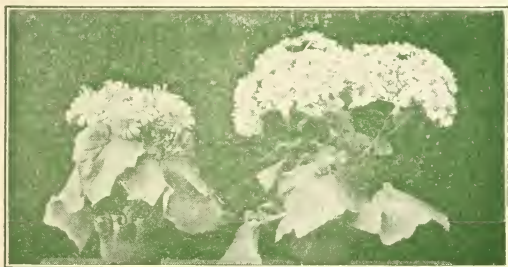
This new fertilizer is the gift of modern science to the farmer and the home owner. It is rich in plant-food—three to five times as rich as the ordinary fertilizer. It is clean to handle—as clean as sugar or salt. It is absolutely free from weed seeds and from all obnoxious odors. It is easy to apply—it can be scattered broadcast, in a few minutes, over any lawn or garden of ordinary size. “A little goes a long way.”

Results Will Amaze You

You will be amazed at the results from the use of Nitrophoska. You will marvel at the vigor and color of your plants. You will be proud of your thick, velvety lawn; of your large, beautiful flowers; and of your crisp, tender, luscious vegetables. For Nitrophoska contains all of the three essential nourishing plant-foods—nitrogen, phosphorus and potash—concentrated in one material. It contains 15% of nitrogen, 30% of phosphoric acid and 15% potash—all of which is quickly soluble and therefore easily available for rapid, sturdy, vigorous plant growth.

Just Sow It Broadcast

A little Nitrophoska fertilizes a great deal of ground. Five to ten pounds (depending upon the natural richness of the soil) is enough to fertilize 1000 square feet (20 feet by 50 feet) of lawn or garden. Just spread it broadcast by hand, and let nature's rains do the rest. Apply it to lawns, shrubbery and perennial plants in the early spring. For vegetables and annual flowers, work it into the soil before planting. Later applications can also be made if desired.



The plant at right was fertilized, the plant at left was not.

FLORANID

{UREA}

Floranid is a very rich nitrogen fertilizer (46% nitrogen), used principally

during the growing season to obtain more rapid growth, richer color of foliage and greater brilliancy of bloom. The nitrogen in Floranid is in the same chemical form as in liquid manure. Twenty-two pounds of Floranid contain as much nitrogen as a ton of manure. One pound of Floranid is enough for one application to 1,000 square feet of lawn or garden.

A Trial Will Convince You

Not until you use these wonderful new fertilizers can you possibly realize the marvelous results that they will give you.

Prices—Either Nitrofoska or Floranid

Sizes	F.O.B. New York	Postpaid East of Rocky Mts.
1 Pound.....	\$.50	\$.65
5 "	2.00	2.20
10 "	3.00	3.40
25 "	5.00	5.50

LARGER SIZES—Florists, nurserymen, greenkeepers, estate managers, and others who use large quantities of fertilizers can buy Nitrofoska and Floranid (Urea) in larger sizes. Write us for prices.

SYNTHETIC NITROGEN PRODUCTS CORPORATION
285 Madison Ave., New York



The tree at left was fertilized, the tree at right was not.

Lottys

MADISON, NEW JERSEY

Terms of Sale

This Price List Cancels all Previous Quotations

DELIVERY will be made on all orders at the proper time for planting, providing no specific date is mentioned when ordering.

Remittances should be made by check, post office order, or express order. When it is not convenient to remit in this way the letter should be registered. We will not be responsible for the receipt of money not registered. On all shipments by parcel post the postage will be charged for.

Be sure that both postal and express address is mentioned, as frequently shipments requested to be sent by parcel post must be shipped by express, on account of overweight when ready for delivery.

Orders for less than \$5.00 must be paid for in advance, and when cash accompanies order, a discount of 3% is allowed from the total amount of the order.

Accounts unpaid within 30 days are subject to sight draft without further notice and interest will be charged after that time.

Orders from customers in foreign countries must in all cases be accompanied by cash.

While we exercise every care in packing, and have confidence in the safe arrival of shipments, all goods are forwarded at the purchaser's risk.

If found unsatisfactory on arrival they must be returned to us immediately. Complaints on goods will not be accepted later than 30 days after their arrival, and no adjustment will be made after that time, as we cannot be responsible for bad weather conditions, or carelessness in culture.

If the customer does not wish to accept the shipment under these conditions, we ask that the plants be returned us immediately.

Please Note: It is not unusual for us to receive orders without any signature or identification mark attached, so customers who do not get a response to their correspondence or orders within a reasonable time, please write again, enclosing copy of letter or order, so we may be able to trace same quickly.

Not less than three plants of one variety will be sold at the dozen rate, nor less than twenty-five at the hundred rate. We are sometimes asked to send one hundred plants in about thirty varieties at the hundred price. We will not send less than twenty-five of one variety at the hundred rate, as it takes considerable time to select one hundred plants in twenty or thirty varieties, and we must charge for the same accordingly.

MADISON

Lottly's

NEW JERSEY

Charles H. Totty
Company



MADISON
NEW JERSEY