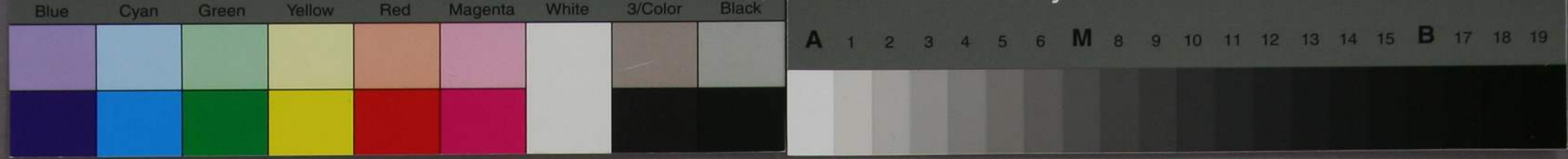


Handwritten text in cursive script, likely Japanese, on a rectangular piece of aged paper. The text is arranged in approximately 10 vertical columns, reading from right to left. The ink is dark and the paper shows signs of age and wear.



洋学文庫
 文庫8
 J121
 9





多智元史帝師八思巴
 創字之一節と傳音
 之文字五洋字と用
 之字一様と力月支
 及本部所用之傳音
 字亦多し其字之於
 世に漢土文字と原
 亦の同部と是ら
 居るべし



