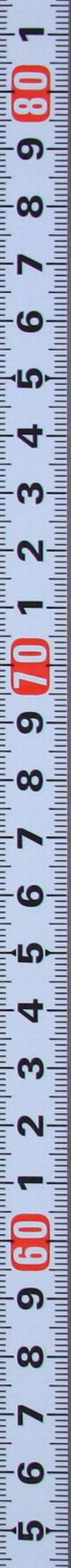
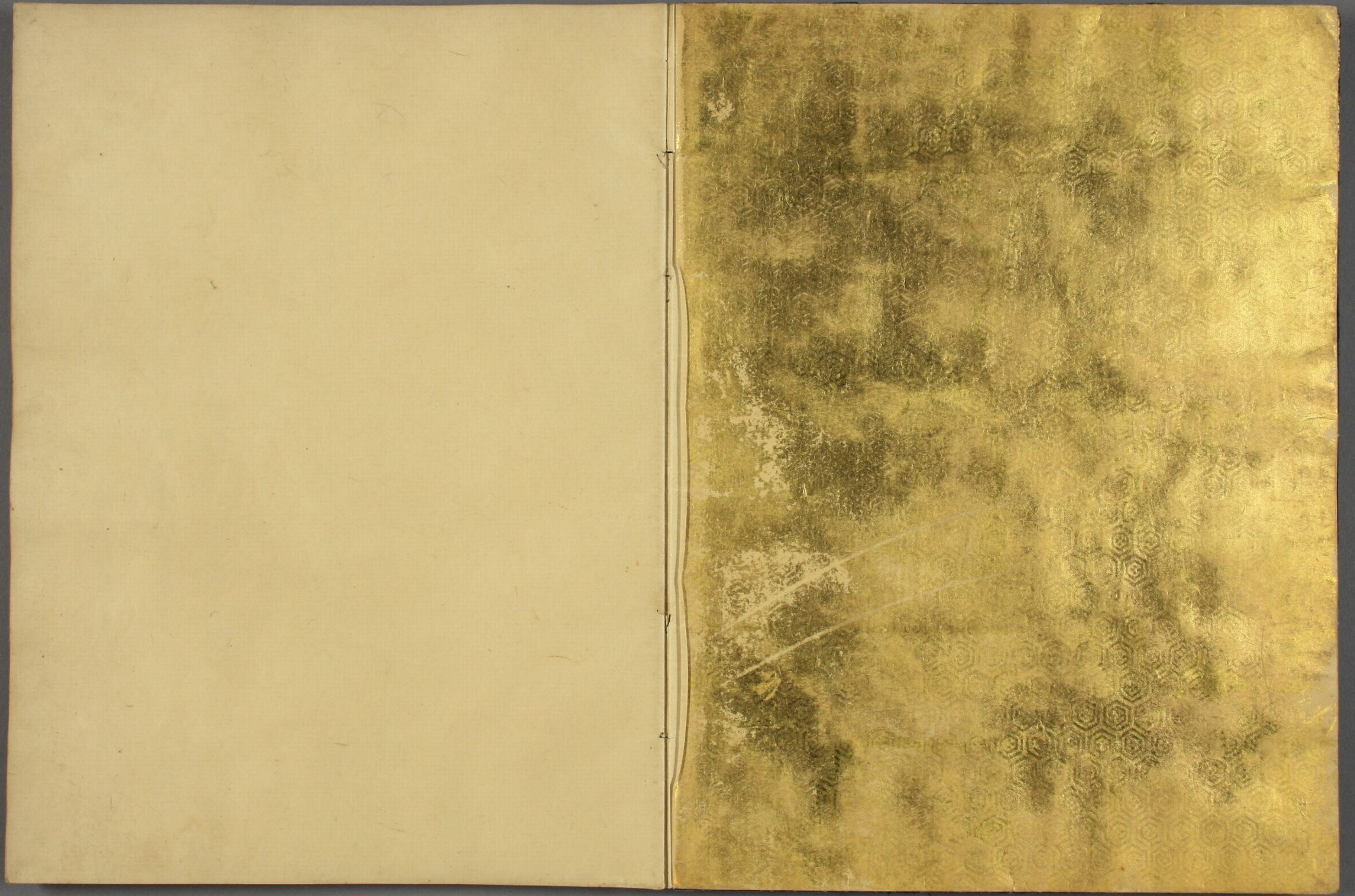




復
復

二
二





狭江巻第二之上



おちりの死の事聞かぬ事
まの事おぼくは聞かぬ事
おちりの中は死の事聞かぬ事
おちりの事おぼくは聞かぬ事
おちりの事おぼくは聞かぬ事
おちりの事おぼくは聞かぬ事

おちりの事おぼくは聞かぬ事
おちりの事おぼくは聞かぬ事
おちりの事おぼくは聞かぬ事
おちりの事おぼくは聞かぬ事
おちりの事おぼくは聞かぬ事
おちりの事おぼくは聞かぬ事

Handwritten text in cursive script, likely a letter or document, written on the left page of an open book. The text is dense and fills most of the page.

Handwritten text in cursive script, likely a letter or document, written on the right page of an open book. The text is dense and fills most of the page.

Handwritten text in a cursive script, likely a letter or a page from a manuscript. The text is written in a fluid, connected style across approximately 12 lines.

Handwritten text in a cursive script, continuing from the previous page. The text is written in a fluid, connected style across approximately 12 lines.

Handwritten text in cursive script, likely a letter or document, covering the left page of the manuscript. The text is dense and fills most of the page.

Handwritten text in cursive script, likely a letter or document, covering the right page of the manuscript. The text is dense and fills most of the page.

Handwritten text in a cursive script, likely a form of shorthand or a specific dialect. The text is arranged in approximately 12 horizontal lines across the page.

Handwritten text in a cursive script, likely a form of shorthand or a specific dialect. The text is arranged in approximately 12 horizontal lines across the page.

Handwritten text in a cursive script, likely a personal letter or diary entry, covering the left page of the manuscript.

Handwritten text in a cursive script, continuing from the left page, covering the right page of the manuscript.

Handwritten text in a cursive script, likely a historical document or letter, written on the left page of an open manuscript. The text is arranged in approximately 12 horizontal lines, starting from the top left and moving towards the bottom right. The ink is dark, and the paper shows signs of age and wear.

Handwritten text in a cursive script, likely a historical document or letter, written on the right page of an open manuscript. The text is arranged in approximately 12 horizontal lines, starting from the top left and moving towards the bottom right. The ink is dark, and the paper shows signs of age and wear.

Handwritten text in a cursive script, likely a personal letter or diary entry. The text is written in a fluid, connected style across approximately 12 lines.

Handwritten text in a cursive script, continuing from the previous page. The text is written in a fluid, connected style across approximately 12 lines.

Handwritten text in a cursive script, likely a historical document or letter. The text is written in a dark ink on aged, yellowish paper. It consists of approximately 12 lines of text, starting with a large initial letter 'C' and ending with a period. The script is highly stylized and characteristic of the 17th or 18th century.

Handwritten text in a cursive script, continuing from the previous page. The text is written in a dark ink on aged, yellowish paper. It consists of approximately 12 lines of text, starting with a large initial letter 'C' and ending with a period. The script is highly stylized and characteristic of the 17th or 18th century.

Handwritten text in a cursive script, likely a musical score or a form of shorthand. The text is written in black ink on aged paper and consists of approximately 15 lines of continuous, flowing characters.

Handwritten text in a cursive script, likely a musical score or a form of shorthand. The text is written in black ink on aged paper and consists of approximately 15 lines of continuous, flowing characters.

Handwritten text in a cursive script, likely a form of Urdu or Persian, written on the left page of an open manuscript. The text is arranged in approximately 12 horizontal lines, flowing from right to left. The ink is dark and the script is highly stylized and connected.

Handwritten text in a cursive script, likely a form of Urdu or Persian, written on the right page of an open manuscript. The text is arranged in approximately 12 horizontal lines, flowing from right to left. The ink is dark and the script is highly stylized and connected.

Handwritten text in a cursive script, likely a historical document or letter. The text is written in a dark ink on aged, yellowish paper. It consists of approximately 12 lines of text, starting with a large initial letter 'P' on the left side. The script is highly stylized and characteristic of the 17th or 18th century.

Handwritten text in a cursive script, continuing from the previous page. The text is written in a dark ink on aged, yellowish paper. It consists of approximately 12 lines of text, starting with a large initial letter 'P' on the left side. The script is highly stylized and characteristic of the 17th or 18th century.

Handwritten text in a cursive script, likely a historical document or letter. The text is written in a fluid, connected style across approximately 12 lines. The ink is dark and the paper shows signs of age.

Handwritten text in a cursive script, continuing from the previous page. The text is written in a fluid, connected style across approximately 12 lines. The ink is dark and the paper shows signs of age.

Handwritten text in cursive script, likely a letter or document, written on the left page of an open manuscript. The text is dense and fills most of the page.

Handwritten text in cursive script, likely a letter or document, written on the right page of an open manuscript. The text is dense and fills most of the page.

Handwritten text in cursive script, likely a letter or document, written on the left page of the manuscript.

Handwritten text in cursive script, likely a letter or document, written on the right page of the manuscript.

Handwritten text in cursive script, likely a letter or document, written on the left page of an open manuscript. The text is dense and fills most of the page.

Handwritten text in cursive script, likely a letter or document, written on the right page of an open manuscript. The text is dense and fills most of the page.

Handwritten cursive text on the left page, consisting of approximately 12 lines of dense, flowing script.

Handwritten cursive text on the right page, consisting of approximately 12 lines of dense, flowing script.

Handwritten text in Arabic script, consisting of approximately 14 lines of cursive script.

Handwritten text in Arabic script, consisting of approximately 14 lines of cursive script.

Handwritten text in a cursive script, likely a letter or document, written on the left page of an open book. The text is dense and fills most of the page.

Handwritten text in a cursive script, likely a letter or document, written on the right page of an open book. The text is dense and fills most of the page.

Handwritten text in a cursive script, likely a letter or document, written on the left page of an open book. The text is arranged in approximately 12 horizontal lines, flowing from right to left across the page.

Handwritten text in a cursive script, likely a letter or document, written on the right page of an open book. The text is arranged in approximately 12 horizontal lines, flowing from right to left across the page.

Handwritten text in cursive script, likely a letter or document, covering the left page of the manuscript. The text is written in a fluid, connected style with various flourishes and loops.

Handwritten text in cursive script, continuing from the left page, covering the right page of the manuscript. The text maintains the same fluid, connected style with various flourishes and loops.

Handwritten text in a cursive script, likely a historical document or letter. The text is written in a dark ink on aged, yellowish paper. It consists of approximately 12 lines of text, with some words appearing to be in a different script or dialect than the surrounding text, possibly indicating a specific name or title. The handwriting is fluid and characteristic of the 17th or 18th century.

Handwritten text in a cursive script, continuing from the previous page. The text is written in a dark ink on aged, yellowish paper. It consists of approximately 12 lines of text, with some words appearing to be in a different script or dialect than the surrounding text, possibly indicating a specific name or title. The handwriting is fluid and characteristic of the 17th or 18th century.

Handwritten text in a cursive script, likely a form of Urdu or Persian, consisting of approximately 10 lines of text.

Handwritten text in a cursive script, likely a form of Urdu or Persian, consisting of approximately 10 lines of text.

Handwritten text in Arabic script, likely a religious or philosophical treatise. The text is written in a cursive style and spans the width of the page.

Handwritten text in Arabic script, continuing the text from the previous page. The text is written in a cursive style and spans the width of the page.

Handwritten text in a cursive script, likely a letter or a page from a manuscript. The text is written in a fluid, connected style across approximately 12 lines.

Handwritten text in a cursive script, continuing from the previous page. The text is written in a fluid, connected style across approximately 12 lines.

Handwritten text in cursive script, likely a letter or document, written on the left page of an open manuscript. The text is dense and fills most of the page.

Handwritten text in cursive script, likely a letter or document, written on the right page of an open manuscript. The text is dense and fills most of the page.

Handwritten text in cursive script, likely a page from a manuscript or diary. The text is written in a fluid, connected style across approximately 12 lines.

Handwritten text in cursive script, continuing from the previous page. The text is written in a fluid, connected style across approximately 12 lines.

Handwritten text in cursive script, likely a page from a manuscript or letter. The text is written in a fluid, connected style across approximately 12 lines.

Handwritten text in cursive script, continuing from the previous page. The text is written in a fluid, connected style across approximately 12 lines.

Handwritten text in a cursive script, likely a historical document or manuscript. The text is written in a dark ink on aged, yellowish paper. It consists of approximately 12 lines of text, starting with a large initial letter 'P' on the second line. The script is highly stylized and difficult to decipher without a key.

Handwritten text in a cursive script, continuing from the previous page. It consists of approximately 12 lines of text, starting with a large initial letter 'P' on the second line. The script is highly stylized and difficult to decipher without a key.

Handwritten text in a cursive script, likely a historical document or manuscript. The text is written in a fluid, connected style across approximately 12 lines.

Handwritten text in a cursive script, continuing from the previous page. The text is written in a fluid, connected style across approximately 12 lines.

Handwritten text in a cursive script, likely a form of Urdu or Persian, consisting of approximately 12 lines of text.

Handwritten text in a cursive script, likely a form of Urdu or Persian, consisting of approximately 12 lines of text.

Handwritten text in a cursive script, likely a letter or a page from a manuscript. The text is written in a fluid, connected style across approximately 12 lines.

Handwritten text in a cursive script, continuing from the previous page. The text is written in a fluid, connected style across approximately 12 lines.

Handwritten text in cursive script, likely a letter or document, covering the left page of the manuscript.

Handwritten text in cursive script, likely a letter or document, covering the right page of the manuscript.

Handwritten text in a cursive script, likely a personal letter or diary entry. The text is written in a fluid, connected style across approximately 12 lines. The ink is dark and the paper shows signs of age.

Handwritten text in a cursive script, continuing from the previous page. The text is written in a fluid, connected style across approximately 12 lines. The ink is dark and the paper shows signs of age.

Handwritten text in a cursive script, likely a form of Urdu or Persian, consisting of approximately 12 lines of text.

Handwritten text in a cursive script, likely a form of Urdu or Persian, consisting of approximately 12 lines of text.

Handwritten text in cursive script, likely a letter or document. The text is written in a fluid, connected style across approximately 12 lines. The ink is dark on aged, yellowish paper.

Handwritten text in cursive script, continuing from the previous page. The text is written in a fluid, connected style across approximately 12 lines. The ink is dark on aged, yellowish paper.

Handwritten text in a cursive script, likely a historical document or manuscript. The text is written in a dark ink on aged paper. The script is highly stylized and difficult to decipher without a key. It appears to be a continuous block of text, possibly a letter or a record.

Handwritten text in a cursive script, continuing from the previous page. The text is written in a dark ink on aged paper. The script is highly stylized and difficult to decipher without a key. It appears to be a continuous block of text, possibly a letter or a record.

Handwritten musical notation on the left page, consisting of a single staff with notes and rests.

Handwritten musical notation on the right page, consisting of a single staff with notes and rests.

Handwritten text in a cursive script, likely a historical document or letter, written on the left page of an open manuscript. The text is arranged in approximately 12 horizontal lines, starting from the top left and moving towards the bottom right. The ink is dark, and the paper shows signs of age and wear.

Handwritten text in a cursive script, likely a historical document or letter, written on the right page of an open manuscript. The text is arranged in approximately 12 horizontal lines, starting from the top left and moving towards the bottom right. The ink is dark, and the paper shows signs of age and wear.

Handwritten text in a cursive script, likely a historical document or letter. The text is written in a dark ink on aged paper. It consists of approximately 12 lines of text, with some lines starting with a large, decorative initial letter. The script is highly stylized and difficult to decipher without a key.

Handwritten text in a cursive script, continuing from the previous page. It consists of approximately 12 lines of text, with some lines starting with a large, decorative initial letter. The script is highly stylized and difficult to decipher without a key.

Handwritten text in a cursive script, likely a historical document or manuscript. The text is written in a dark ink on aged, yellowish paper. It consists of approximately 12 lines of text, starting with a large initial letter 'D' and ending with a large 'L'. The script is highly stylized and difficult to decipher without a key.

Handwritten text in a cursive script, continuing from the previous page. It consists of approximately 12 lines of text, starting with a large initial letter 'D' and ending with a large 'L'. The script is highly stylized and difficult to decipher without a key.

Handwritten text in a cursive script, likely a historical document or manuscript. The text is written in a dark ink on aged paper. The script is highly stylized and difficult to decipher, but it appears to be a continuous block of text. The first line begins with a large, ornate initial letter, possibly 'S' or 'S'. The text continues across the page with several lines of similar cursive writing.

Handwritten text in a cursive script, likely a historical document or manuscript. The text is written in a dark ink on aged paper. The script is highly stylized and difficult to decipher, but it appears to be a continuous block of text. The first line begins with a large, ornate initial letter, possibly 'S' or 'S'. The text continues across the page with several lines of similar cursive writing.

Handwritten text in a cursive script, likely a form of Urdu or Persian, consisting of approximately 12 lines of text.

Handwritten text in a cursive script, likely a form of Urdu or Persian, consisting of approximately 12 lines of text.

Handwritten text in a cursive script, likely a form of shorthand or a specific dialect. The text is arranged in approximately 12 horizontal lines across the page.

Handwritten text in a cursive script, likely a form of shorthand or a specific dialect. The text is arranged in approximately 12 horizontal lines across the page.

Handwritten text in a cursive script, likely a historical document or letter. The text is written in a dark ink on aged, yellowish paper. It consists of approximately 12 lines of text, starting with a large initial letter 'C' and ending with a flourish. The script is highly stylized and characteristic of the 17th or 18th century.

Handwritten text in a cursive script, continuing from the previous page. It consists of approximately 12 lines of text, starting with a large initial letter 'C' and ending with a flourish. The script is highly stylized and characteristic of the 17th or 18th century.

Handwritten text in cursive script, likely a letter or document, written on the left page of an open book. The text is dense and fills most of the page.



Handwritten text in cursive script, likely a letter or document, written on the right page of an open book. The text is dense and fills most of the page.

Handwritten text in a cursive script, likely a historical document or manuscript. The text is written in a dark ink on aged paper. It consists of approximately 12 lines of text, with some lines starting with a large, decorative initial letter. The script is highly stylized and difficult to decipher without a key.

Handwritten text in a cursive script, continuing from the previous page. It consists of approximately 12 lines of text, with some lines starting with a large, decorative initial letter. The script is highly stylized and difficult to decipher without a key.

Handwritten text in a cursive script, likely a letter or a page from a manuscript. The text is written in a fluid, connected style across approximately 12 lines.

Handwritten text in a cursive script, continuing from the previous page. The text is written in a fluid, connected style across approximately 12 lines.

Handwritten text in a cursive script, likely a historical document or letter. The text is written in a dark ink on aged paper. It consists of approximately 12 lines of text, starting with a large initial letter. The script is highly stylized and characteristic of the Ottoman Turkish or Persian calligraphic tradition.

Handwritten text in a cursive script, likely a historical document or letter. The text is written in a dark ink on aged paper. It consists of approximately 12 lines of text, starting with a large initial letter. The script is highly stylized and characteristic of the Ottoman Turkish or Persian calligraphic tradition.

کتابت فی تاریخ اسلام
در بیان سیرت و مناقب
پیغمبر اکرم صلی الله علیه و آله
و آله و صحبه اجمعین
تالیف حضرت شیخ
محمد باقر مجلسی
محقق و مؤلف
کتابخانه مجلس
تبریز

