

Historic, archived document

Do not assume content reflects current scientific knowledge, policies, or practices.



62, 19

SPRING-1928

HASTINGS' SEEDS

JAN 4 1928



D. N. Shoemaker 0

**MCCASLAN
POLE BEAN**
Packet, 15 cents.
½ Pound, 30 cents.
Pound, 50 cents.



**IMPROVED
BLOOD TURNIP BEET**
Packet, 10 cents.
Ounce, 15 cents.
¼ Pound, 50 cents.

**IMP. KLECKLEY
SWEET WATERMELON**
Packet, 10 cents.
Ounce, 15 cents.
¼ Pound, 40 cents



H G H
©

This complete catalog, all reading matter and illustrations, Copyright, 1928, by H. G. Hastings Co., Atlanta, Ga.

D. N. Shoemaker



HASTINGS' COMPLETE GARDEN—95c Postpaid

18 Packets of Vegetable Seeds, all kinds pictured above with Big Boston Lettuce, Georgia Collard and the famous McCaslan Pole Bean, as pictured on the front cover, included; \$1.60 worth. Also 5 packets of flower seeds as pictured across the top: Evening Scented Primrose, Double Balsam, Japanese Sunflower, Candytuft and Tri-color Chrysanthemum; value 50c. Also 6 varieties of America's most popular bulb flower, one bulb each of the 6 Gladiolus varieties pictured; value 50c.—\$2.60 worth of the best seeds and bulbs grown—the Greatest Garden Bargain we ever made or heard of—Only 95c Postpaid. You may order several.



CONCORD GRAPE

LUTIE GRAPE

NIAGARA GRAPE

MOORE'S EARLY GRAPE

Hastings' Southern Home Grape Collection—50c

Nothing in this whole catalog will give greater satisfaction than this splendid set of Hardy Grapes. Every home, if only on a city lot can find space to plant them. One each of these four grapes—strong, well rooted, year-old vines, sure to do well in the South. Hastings' Southern Home Grape Collection, Postpaid—Only 50c. Order several of them—A real bargain in fine Grapes.

Concord Best known Grape in existence. Large berry and bunch, blue-black thin skin; flesh sweet and tender and of good quality. Strong grower and prolific bearer. We consider it one of the very best varieties for home or for the market.

Postpaid—20c each; 5 for 85c; 10 for \$1.50; 100 for \$10.00.

Lutie Recommended as the best and most satisfactory Grape for the South. Medium to large berries, large bunches, dark red, very sweet and of excellent quality. Ripens just after Moore's Early and hangs on the vine until Concord is ripe. Very valuable and worth-while.

Postpaid—25c each; 5 for \$1.15; 10 for \$2.00; 100 for \$15.00.

Niagara The best white Grape grown and one of the best of all varieties. Large berries and large bunches; greenish-yellow skin, sweet, pulpy flesh and an all round good Grape. Vigorous and satisfactory grower, no collection being complete without it.

Postpaid—20c each; 5 for 85c; 10 for \$1.50; 100 for \$10.00.

Moore's Early Early to ripen, medium to large berries and large bunches. Color of skin is black with a heavy blue bloom. A high quality Grape, very early and very hardy; a fine grower and producer and needed at every home.

Postpaid—20c each; 5 for 85c; 10 for \$1.50; 100 for \$10.00.

Note! For Shrubs, Evergreens, Fruits, Shade Trees, Berries or other Nursery Stock write for Hastings' Nursery Annual.



BUDDLEIA



ANTHONY WATERER SPIREA



VAN HOUTTE SPIREA



WEIGELA

ROSEA

"Big Four" Shrub Collection

\$1.45 Our Collection offers are real bargains and contain plants and varieties that are the very best, give the best satisfaction, are entirely worth-while. These four great shrubs are of the most popular kinds grown today, fine, strong, 2-year old shrubs—giving you the beautiful lavender flowered Buddleia or Butterfly Bush, the red flowering Anthony Waterer Spirea, the gorgeous mass of white in Bridal Wreath or Van Houtte Spirea and the most popular of all Weigelas, the beautiful rosy-pink Rosea variety.

Each one of these beautiful Ornamental Shrubs is used extensively in landscape plans, for the simplest and the most costly of homes. We are obliged to grow them in great quantities to offer them at such a bargain price and we hope you will take full advantage of this offer.

"Big 4" Shrub Collection—Postpaid—Only \$1.45.

HASTINGS' SEEDS *for* SUCCESSFUL GARDENS

No Agents Absolutely no agents are authorized to sell Hastings' Seeds, Plants and Bulbs. We make this statement because there are crooks passing themselves as seed, tree or bulb salesmen who get hold of our catalogs, take orders and a deposit and that's the last any one hears of the salesmen. Play safe and get the best seeds, bulbs and nursery stock by ordering from Hastings' in Atlanta direct. We are as near as your mail box and the dependable source of supply for "Everything That Grows." Take no chances, but get all your planting stock from the best known and most reliable source possible. It pays!

Seeds Postpaid by Mail Remember that the prices given in this list include delivery of all seeds in packet, ounce, quarter-pound, pound and two-pound lots unless otherwise noted. Send us the amount named in this catalog, and we guarantee safe delivery by mail in these quantities.

Liberal Premiums Please bear in mind that on seeds in packets and ounces only (no quarter-pounds or larger quantities), the purchaser may select 25 cents' worth extra on each dollar sent. This does not apply to orders for collections, prices of which are net.

Terms Cash Absolutely no plants or other perishable goods will be sent C. O. D. We accept C. O. D. orders for seeds in exceptional cases where 25% of the order is paid in advance but advise against it because of delays and high collection charges which are unsatisfactory to the customer and expensive to us if order is uncalled for.

Stamps On orders of seeds where the amount is less than 50 cents, we will accept U. S. Postage stamps in good condition (one, two, three and five-cent stamps preferred), the same as cash, but we would ask those remitting stamps to wrap them in oiled paper, if possible, to prevent their sticking together or to the order.

About Warranty H. G. HASTINGS CO. gives no warranty, express or implied as to description, quality, productiveness or any other matter, of seeds, bulbs or plants they send out, and will not be in any way responsible for the crop. If purchaser does not accept the goods on these terms, they are at once to be returned, and any money that may have been paid for them will be refunded. Crops are dependent for success or failure on so many things besides seed that it is impossible for us to give any warranty or guarantee. This does not mean that we lack confidence in the seeds we sell, but we have no control over the seeds after they leave our house, especially so as to the methods of planting, cultivating and fertilizing, all of which are important factors in the success of any crop. If we should warrant or guarantee seeds in any way, we could be held responsible for the failure of the crop, regardless of cause, and this is a responsibility we cannot and will not accept. No responsible seedsman gives any warranty.

Every Time You Order Seeds or Write to Us Be Sure and Write Your Name, Post Office and State plainly. Hundreds of Orders Are Delayed Every Year Because the Sender forgets to Sign His Name or Give His Post Office Address.

WRITE FOR HASTINGS' NEW SPRING GENERAL CATALOG

This Special Color Catalog contains our best varieties of seeds for Southern planting, and is very complete for its size, but if you want to buy seeds in larger quantities or other varieties and would like our 108-page, handsomely illustrated general catalog, we shall be pleased to send it to you by return mail. Just write us a letter or postal card and ask for our New Spring Catalog. It is entirely free.

ASPARAGUS

(2) WASHINGTON ASPARAGUS SEED. The finest strain of the finest and largest variety now grown. Very highest yielding, tenderest and most rust resistant of all varieties. Packet, 10c. Oz., 25c. ¼ Lb., 75c. Lb., \$2.50.

WASHINGTON ASPARAGUS ROOTS save 1½ years' time by using Hastings' Plantation grown roots. Roots: 50 for \$1.00. 100 for \$1.50. 1,000 for \$10.00.

SNAP BEANS

1 LB. PLANTS 75 FEET OF ROW

(25) HASTINGS' EXTRA EARLY RED VALENTINE. Most largely planted green-pod bush bean in the South. True, round podded strain, very early, vigorous grower and heavy producer of medium-sized, tender, slightly stringy, finely flavored pods about 4½ inches long. Recommended for home and market use and for shipping. Packet, 10c. ½ Lb., 20c. Lb., 40c. 2 Lbs., 70c.

(6) HASTINGS' STRINGLESS GREEN POD. The only absolutely stringless, green, round podded bean in all stages of growth. Very prolific, strong grower and longest bearing variety; dark green, brittle pods about 5 inches long. The best quality green podded bush bean. Recommended for home and local market. See Picture on next page. Packet, 10c. ½ Lb., 25c. Lb., 45c. 2 Lbs., 80c.



(7) HENDERSON BUSH LIMA BEAN

(20) SURE CROP STRINGLESS WAX. We believe the finest bush wax bean ever introduced. Very prolific; healthy, vigorous, upright growth. Handsome rich creamy yellow pods are very thick, meaty, sweet flavored, stringless at all stages of growth and 6 to 7 inches long. Best home garden variety and finest in eating quality of all wax beans. Packet, 10c. ½ Lb., 25c. Lb., 45c. 2 Lbs., 80c.

GENUINE CORNFIELD BEANS

(18) HASTINGS' GENUINE CORNFIELD BEAN. Vigorous climbing grower in the shade of corn stalks; heavy bearer of green podded beans about 6 inches long; round pods well filled with seeds. There are many so-called cornfield beans but this one actually grows well in the shade of corn. Packet, 10c. ½ Lb., 20c. Lb., 40c. 2 Lbs., 75c.

NOTE—Varieties listed in this Special Catalog we recommend as the best.



(25) HASTINGS' EXTRA EARLY RED VALENTINE BEAN

POLE BEANS

(26) **McCASLAN POLE BEAN.** We introduced this bean as the best pole bean in existence. It still is. It's the heaviest bearing bean of all and if kept closely picked will bear until frost. The large pods fill perfectly and in "snap" stage are deep green, meaty, stringless and of delicious flavor. When allowed to ripen, the dry shell beans of pure white color are excellent for winter use. It's the best pole bean for your garden and you will never regret planting it. See picture to right and on front cover. Packet, 15c. $\frac{1}{2}$ Lb., 30c. Lb., 50c. 2 Lbs., 90c.

(15) **TEXAS PROLIFIC, OLD HOMESTEAD, KENTUCKY WONDER.** Second only to McCaslan and the standard pole bean all over the country. Very prolific bearer of green, round, well-filled, meaty, almost stringless pods 6 to 12 inches long. Often a peck of snap beans are picked from a single vine. You cannot go wrong with this bean, known under all three names. Packet, 10c. $\frac{1}{2}$ Lb., 20c. Lb., 40c. 2 Lbs., 75c.

BUTTER BEANS

(7) **HENDERSON BUSH LIMA.** Smallest and most prolific and satisfactory of all white seeded bush varieties. Very early and most popular kind of butter beans for home, canning and market use. Pods are small, about 3 inches long, with 3 or 4 small, flat, white beans. Tenderest and best for use in green stage. Packet, 10c. $\frac{1}{2}$ Lb., 20c. Lb., 40c. 2 Lbs., 75c.

(17) **JACKSON WONDER BUSH LIMA.** Most prolific of all, this Georgia butter bean is a wonder. Almost drought proof, flavor delicious, size small. Packet, 10c. $\frac{1}{2}$ Lb., 25c. Lb., 45c. 2 Lbs., 80c.

(33) **FORDHOOK BUSH LIMA.** Best large seeded butter bean. Large pods, large seeds, fine flavor; tender. Packet, 15c. $\frac{1}{2}$ Lb., 30c. Lb., 50c. 2 Lbs., 90c.

(9) **SMALL WHITE POLE LIMA.** Carolina or Sieva Bean. Climbing form, similar to Henderson Bush Lima. Continuous bearer of tender and delicious butter beans. The 3-inch, dark green, curved pods contain 3 to 4 creamy white beans. Packet, 10c. $\frac{1}{2}$ Lb., 20c. Lb., 40c. 2 Lbs., 75c.

(27) **FLORIDA BUTTER BEAN.** Blooms and bears profusely throughout the season. Small size, speckled white and brownish red. Extra hardy and excellent table bean. Packet, 10c. $\frac{1}{2}$ Lb., 25c. Lb., 45c. 2 Lbs., 80c.



(6) **HASTINGS' STRINGLESS GREEN POD BUSH BEANS**



(26) **McCASLAN POLE BEANS**
See Front Cover

WRITE FOR PRICES ON 5 LB. LOTS OR OVER
WHEN READY TO BUY. IT WILL PAY YOU.

BEETS

1 OZ. PLANTS 50 FEET OF ROW

(45) **HASTINGS' IMPROVED BLOOD TURNIP BEET.** See picture on front cover page. This is the finest beet grown for home use and local markets. Color is deep blood red, uniform in growth and form of root; medium early, very productive, tender, free from strings, very sweet and most valuable kind for successive sowings. Now also called **DETROIT DARK RED.** Packet, 10c. Oz., 15c. $\frac{1}{4}$ Lb., 50c. Lb., \$1.50.

(40) **HASTINGS' ECLIPSE BLOOD TURNIP BEET.** A favorite for home gardens and the most popular market gardeners' variety. Fine form, smooth, free from stringy roots, extra fine quality, tender and sweet. Heavy producer of handsome deep blood red beets that hold their color after being cooked. Small tops; extra fine variety. Packet, 10c. Oz., 15c. $\frac{1}{4}$ Lb., 40c. Lb., \$1.25.

(42) **CROSBYS EARLY EGYPTIAN.** Earliest of all to plant and mature. Small tops; flattened globe shaped smooth roots of bright red; sweet, of good quality, uniform bunching and table beet. Packet, 10c. Oz., 15c. $\frac{1}{4}$ Lb., 50c. Lb., \$1.50.

(49) **LONG SMOOTH BLOOD BEET.** An old-time Southern favorite with long, smooth, blood red roots growing deep into the soil, which helps it to withstand dry hot spells. 8 to 10 inches long, late maturing, tender, sweet and keeps well into winter. Fine for pickles and to use after other beets are gone. Packet, 5c. Oz., 10c. $\frac{1}{4}$ Lb., 30c. Lb., \$1.00.

(43) **SWISS CHARD BEET OR SEA KALE.** Grown for its leaves or greens only, making no bulbous root. Leaves grow large and upright and as outer leaves are cut more come from the center. Mid-ribs of leaves are large and white and are trimmed, cooked and served like asparagus. Packet, 10c. Oz., 15c. $\frac{1}{4}$ Lb., 50c. Lb., \$1.50.



(40) **HASTINGS' ECLIPSE BLOOD TURNIP BEET**



(105) HASTINGS' FAMOUS LONG ISLAND WAKEFIELD CABBAGE

BRUSSELS SPROUTS

The sprouts are miniature cabbages, growing closely on the stalk of plant. Quite hardy; live through winter in lower South.

(59) **IMPROVED DWARF BRUSSELS SPROUTS.** Most desirable variety in every way. Grows 18 to 30 inches high, packed with grayish green sprouts. Packet, 10c. Oz., 25c. $\frac{1}{4}$ Lb., 75c. Lb., \$2.50.

CRESS

(133) **WATER CRESS.** Grown easily in shallow fresh water or wet soil. Makes fine salads and garnishing. Packet, 10c. Oz., 40c. $\frac{1}{4}$ Lb., \$1.25.

(132) **EXTRA CURLED CRESS (IMP. PEPPER GRASS).** Tastes same as water cress and easily grown anywhere. Packet, 10c. Oz., 15c. $\frac{1}{4}$ Lb., 40c.

ENDIVE

(193) **EARLY GREEN CURLED.** Standard variety; excellent flavor; finest for salads. Endive is one of the best salads grown, makes beautiful garnishing, splendid "greens" and fine flavoring for soups and stews. Hardy, vigorous growing; bright deep green lacinated leaves that bleach to a rich cream color. Packet, 10c. Oz., 15c. $\frac{1}{4}$ Lb., 50c. Lb., \$1.50.



(120) HASTINGS' GENUINE SUREHEAD CABBAGE

HASTINGS' CABBAGE

(118) **COPENHAGEN MARKET.** Extra early, solid round heads of excellent quality; vigorous, upright growth, short stem and few outer leaves. Heads nearly round, medium light green, thick and smooth. This is perhaps the most valuable cabbage in America today, the best of its type and practically as early as the Wakefield cabbages. Packet, 10c. $\frac{1}{2}$ Oz., 20c. Oz., 35c. $\frac{1}{4}$ Lb., \$1.00. Lb., \$3.50.

(106) **EARLY JERSEY WAKEFIELD.** The first early Cabbage in the South. Exceedingly hardy, compact heads, erect, few outer leaves that are smooth, thick and dark green. Medium size, very solid, uniformly pointed and of excellent quality. Very finest strain, our grower's selected seed. Packet, 10c. $\frac{1}{2}$ Oz., 20c. Oz., 30c. $\frac{1}{4}$ Lb., 90c. Lb., \$2.75.

(105) **HASTINGS' FAMOUS LONG ISLAND WAKEFIELD.** Largest, earliest and surest header of all the large Wakefield varieties. Far better than Charleston Wakefield and larger, better shaped and more solid than Early Jersey Wakefield. It makes a splendid shipper as well as being the best pointed cabbage for early home use. Packet, 10c. $\frac{1}{2}$ Oz., 20c. Oz., 30c. $\frac{1}{4}$ Lb., 90c. Lb., \$2.75.

(101) **HASTINGS' SURE CROP.** Medium early, large, round, flat heads, very firm and solid, uniform in shape and size. Most excellent quality, crisp and tender, dark green color. Recommended for home, market and shipping. Packet, 10c. Oz., 25c. $\frac{1}{4}$ Lb., 75c. Lb., \$2.50.

(120) **HASTINGS' GENUINE SUREHEAD.** The most popular main crop cabbage. Our strain never fails to make fine, large, solid heads with few outer leaves, as shown in picture. Strong grower, very uniform in size, shape and color. Invaluable for the home garden and one of the best for market use. Packet, 10c. Oz., 25c. $\frac{1}{4}$ Lb., 75c. Lb., \$2.50.

(110) **HASTINGS' CENTENNIAL LATE FLAT DUTCH.** The largest heading cabbage to grow. This is the variety the heavy yield records and the biggest and heaviest head prizes go to. Good for spring or fall planting, very hardy, resistant to heat and cold, good keeper and a paying sort to plant for late or main crop. This is the greatest cropper known—to Cabbage Growers what Hastings' Prolific is to Corn Growers. Packet, 10c. $\frac{1}{2}$ Oz., 15c. Oz., 25c. $\frac{1}{4}$ Lb., 75c. Lb., \$2.50.

Big 4 Cabbage Collection—25c

Four varieties: **LONG ISLAND WAKEFIELD, HASTINGS' GENUINE SUREHEAD, COPENHAGEN MARKET** and **CENTENNIAL LATE FLAT DUTCH**, combine four of the best varieties grown and will give you an all-season supply of cabbage; early, medium and late. They are first-class for early spring planting, and equally good for summer and early fall plantings. This is a big bargain offer, 40 cents' worth for 25 cents, postpaid, and generally 25,000 to 30,000 of our customers take full advantage of this valuable collection each spring.

COLLARDS

The old time standby for greens all over the South. One ounce of seed plants 200 feet of row.

(135) **SOUTHERN OR GEORGIA COLLARD.** Stands all sorts of adverse conditions, and will make a good crop on soil too poor to grow cabbage. This is the Southern standard variety. Packet, 5c. Oz., 10c. $\frac{1}{4}$ Lb., 25c. Lb., 75c.



(135) TRUE SOUTHERN OR GEORGIA COLLARD



(65) CHANTENAY CARROT

CARROTS

1 OZ. PLANTS 100 FT. OF ROW

(65) CHANTENAY. See illustration. A half-long rooted variety, unexcelled in quality and productiveness; very uniform in growth. Flesh is deep golden orange and roots when mature are about 3 inches across at top, tapering 5 inches long to a point, though they are usually pulled when smaller for table use. Best of all varieties. Packet, 10c. Oz., 15c. ¼ Lb., 35c. Lb., \$1.25.

(66) OXHEART OR GUERANDE. Best of the short, thick rooted carrots; about 4 inches across top and 2 inches across bottom and 5 inches long. Roots free from hard core, fine quality for table use and skin and flesh are highly colored golden orange. Packet, 10c. Oz., 15c. ¼ Lb., 35c. Lb., \$1.25.

CELERY

1 OZ. MAKES 5,000 GOOD PLANTS

(77) GOLDEN SELF-BLANCHING. The finest variety for market gardeners. French grown originator's stock seed. Packet, 10c. ½ Oz., 60c. Oz., \$1.00. ¼ Lb., \$3.25. Lb., \$12.00.

(78) HASTINGS' EASY BLANCHING. New variety of real merit. Dwarf growing with thick stalks of excellent quality; foliage light green tinged yellow. Medium early, excellent keeper and very desirable because it blanches more easily than any other variety. You should equal any you can buy with this the first time you grow it. Best for home garden use and easily the best for amateur growing. Packet, 10c. Oz., 30c. ¼ Lb., 90c. Lb., \$3.00.

CUCUMBERS

1 OZ. PLANTS 60 HILLS

(180) HASTINGS' WHITE SPINE. Extra dark strain, holding its green color; earliest in maturity, tender, fine quality, good size, uniform growth and fruits; the best all-round cucumber on the market. Our New Re-Selected Strain. Packet, 10c. Oz., 20c. ¼ Lb., 50c. Lb., \$1.50.

(179) DAVIS PERFECT. Almost ideal in shape, rich dark green, very prolific, few seeds, tender, excellent for slicing, regular in size and shape. Very popular. Our New Re-Selected Strain. Packet, 10c. Oz., 20c. ¼ Lb., 50c. Lb., \$1.50.

(186) OUR EVERBEARING. Our most popular home garden variety because it stays in bearing longer than any other, whether fruits are kept picked or not. Fine for pickling when small and for slicing later. Very prolific and fine green color; fine grained and tender. Packet, 10c. Oz., 15c. ¼ Lb., 40c. Lb., \$1.25.

(181) IMPROVED LONG GREEN. Extra long, good size, dark green until well matured. Crisp, tender and free from bitterness; fine for slicing. Good for early and late plantings; a popular favorite. Packet, 10c. Oz., 20c. ¼ Lb., 50c. Lb., \$1.50.

(183) CHICAGO PICKLE. The standard for pickling; small, dark green and immensely productive. Can be sliced if left to grow larger. Packet, 5c. Oz., 15c. ¼ Lb., 40c. Lb., \$1.25.

(185) JAPANESE CLIMBING. Finest climbing cucumber to grow on fences, poles or trellises. Very prolific and excellent quality. Packet, 10c. Oz., 20c. ¼ Lb., 50c. Lb., \$1.50.



(180) WHITE SPINE CUCUMBER



(85) HASTINGS' GILT EDGE CAULIFLOWER

CAULIFLOWER

(85) GILT EDGE. Largest, most perfect and surest header of all the early varieties, and in quality it is unexcelled. Similar to Snowball but surer header. Easily the finest variety in America today. Packet, 25c. ¼ Oz., 75c. ½ Oz., \$1.25. Oz., \$2.25. ¼ Lb., \$8.00. Lb., \$30.00.

EGGPLANT

(190) HASTINGS' IMPROVED LARGE PURPLE THORNLESS. See illustration. Standard for all parts of the South for home use or shipment. Fruits are splendidly colored rich dark purple and 90 per cent or more plants are thornless. Strong grower, producing 5 to 8 large fruits and less subject to "blight" than other sorts. Packet, 10c. ½ Oz., 25c. Oz., 40c. ¼ Lb., \$1.50. Lb., \$5.00.



(190) IMPROVED LARGE PURPLE THORNLESS EGGPLANT

MUSTARD FOR SPRING SALAD

1 Oz. of Seed Plants 200 Feet of Row

(278) **GIANT SOUTHERN CURLED.** The very best of the finely curled leaf varieties, slightly pungent, crisp and tender. Can be eaten like lettuce or boiled for "greens." Also called Ostrich Plume. Packet, 5c. Oz., 10c. $\frac{1}{4}$ Lb., 25c. Lb., 75c.

(277) **CHINESE.** Resembles Southern Curled but quicker grower, mild, tender and free from bitter taste. Packet, 5c. Oz., 10c. $\frac{1}{4}$ Lb., 25c. Lb., 75c.

OKRA—HASTINGS' PLANTATION GROWN

1 Oz. Plants 50 Feet of Row

(305) **HASTINGS' WHITE VELVET.** See illustration. Standard of the South for garden and market. Early, round white pods free from ridges and not prickly to touch. Packet, 5c. Oz., 10c. $\frac{1}{4}$ Lb., 25c. Lb., 75c. 10 Lbs., \$5.00.

(304) **HASTINGS' DWARF.** Large, green podded, very prolific, tender, extra early okra of uniform low growth. Our own new introduction. Packet, 5c. Oz., 10c. $\frac{1}{4}$ Lb., 30c. Lb., \$1.00.

(306) **PERKINS' MAMMOTH.** Large, long, ridged pods of dark green; very prolific; tall growing. Packet, 5c. Oz., 10c. $\frac{1}{4}$ Lb., 25c. Lb., 75c. 10 Lbs., \$5.00.

SPINACH—PARSLEY—PARSNIPS—SALSIFY

(411) **HASTINGS' ARAGON SPINACH.** Best Southern variety, with large, thick green savoyed or crumpled leaves, stands a long time before running to seed. See illustrations. Packet, 5c. Oz., 10c. $\frac{1}{4}$ Lb., 20c. Lb., 60c. 10 Lbs., \$4.00.

(416) **NEW ZEALAND SINACH.** Summer variety, growing luxuriantly in hottest weather and on poor or rich soil. Cut and it comes again with tall bushy plants and many small, broad, thick, pointed leaves, making the best "greens" of any vegetable. It should be in every garden. Packet, 10c. Oz., 15c. $\frac{1}{4}$ Lb., 40c. Lb., \$1.25.

(308) **EXTRA MOSS CURLED PARSLEY.** Most ornamental of all varieties, the favorite for garnishing, flavoring and for hotels and markets. Compact growing, dark green, finely cut and closely curled leaves. Packet, 10c. Oz., 15c. $\frac{1}{4}$ Lb., 30c. Lb., \$1.00.

(311) **IMPROVED HOLLOW CROWN PARSNIPS.** Excellent for the table, prepared like turnips or carrots. Rich, smooth white skin, very sweet flavor, tender, long, large roots; immensely productive. Packet, 10c. Oz., 15c. $\frac{1}{4}$ Lb., 30c. Lb., \$1.00.

(404) **SALSIFY, MAMMOTH SANDWICH ISLAND.** The vegetable oyster. Roots are delicious cooked in several ways. Easily the best variety; large, long, smooth, white tapering roots; excellent in quality. Packet, 10c. Oz., 25c. $\frac{1}{4}$ Lb., 75c. Lb., \$2.50.

PUMPKINS

1 Oz. Plants 20 Hills of Pumpkins

(363) **HASTINGS' BIG JUMBO.** See picture from specimen that weighed 220 pounds. Use Big Jumbo if you want to grow the biggest pumpkin in your county. Under good cultivation it's a monster. Flesh is bright rich yellow and fine grained. The quality and flavor is very good considering its immense size. Packet, 10c. Oz., 20c. $\frac{1}{4}$ Lb., 50c. Lb., \$1.50.

(364) **SWEET OR SUGAR.** Sweet, yellow fleshed, small, pie and baking Pumpkin of finest quality. Easily grown and most popular table sort and garden variety. 12 inches through, thick fleshed, deep orange skin, heavy bearing. Packet, 5c. Oz., 10c. $\frac{1}{4}$ Lb., 30c. Lb., \$1.00.

(365) **IMPROVED GREEN STRIPED CASHAW.** The favorite of the Cashaw type for the South. Color distinct mottled green striped with white; flesh rich yellow, solid, fine grained and very thick. Sweet and excellent for pies and baking. Can be grown in corn fields, is a heavy yielder and also fine for stock feeding. Packet, 10c. Oz., 15c. $\frac{1}{4}$ Lb., 40c. Lb., \$1.25.

NOTICE.—Seeds listed in this Special Catalog are our highest recommended varieties. If interested in other kinds of seeds, plants and bulbs, please write for our general catalog.



(305) HASTINGS' WHITE VELVET OKRA



(278) GIANT SOUTHERN CURLED MUSTARD



(363) HASTINGS' BIG JUMBO PUMPKIN—BIGGEST OF ALL



(411) HASTINGS' ARAGON SPINACH—FOR "GREENS"



(231) HASTINGS' EDEN GEM CANTALOUPE

MUSKMELONS

(231) HASTINGS' EDEN GEM. See picture above. This is the best all-round variety of muskmelon or cantaloupe in America. It is greenish fleshed, resistant to insect attacks on account of its dense netting and flesh is thick and firm. Enormous producer of uniform melons and the big money-making variety for market and shipping as well as the most satisfactory of all for home use. Delicious and extra fine quality. Packet, 10c. Oz., 20c. ¼ Lb., 50c. Lb., \$1.75.

(243) HASTINGS' SALMON FLESH EDEN GEM. Also called Hastings' Pink Meat and Pollock 10-25. Just like Eden Gem except 90 per cent or more have salmon colored flesh. Just as fine a variety in every way for home use, market and shipping. Packet, 10c. Oz., 20c. ¼ Lb., 50c. Lb., \$1.75.

(237) ORIGINAL ROCKYFORD. Popular early variety for home and market use. It is regularly ribbed, well netted, good size, and has thick green flesh of fine flavor. This is the true original strain, kept pure and not the usual crossed and mixed sorts generally offered under this name. Packet, 5c. Oz., 10c. ¼ Lb., 30c. Lb., \$1.00.

(244) HONEY DEW MELON. Introduced to the South by us in 1917, Honey Dew has made good. Let it ripen on the vine and it is the sweetest and most delicious garden fruit grown. It is round in shape, of good size, weighs 6 to 8 pounds, smooth light cream skin with thick, rich, sweet, spicy flesh of light green. Easy to grow. Packet, 10c. Oz., 20c. ¼ Lb., 65c. Lb., \$2.00.

(245) NEW HONEY BALL. This is the new melon that has taken the Texas market by storm and popular wherever shown since 1924. Grown from originator's stock seed. Cross between Honey Dew and Texas Cannonball Cantaloupe; looks very similar to Honey Dew and should also be left on vines to ripen for best flavor. Not too sweet like some think of Honey Dew; hardy, very prolific, thick fleshed and a fine new introduction. Be sure to try a packet at least. Packet, 10c. Oz., 25c. ¼ Lb., 90c. Lb., \$3.00.

KALE OR BORECOLE

1 OZ. PLANTS 100 FEET OF ROW

(200) EARLY GREEN CURLED. More hardy than cabbage and will stand through the entire winter of Central and Lower South. It is rather low growing with fine, curled leaves of deep green color. The young leaves are tender and very delicate in flavor; excellent for "greens" or "salad." Packet, 5c. Oz., 10c. ¼ Lb., 30c. Lb., \$1.00

KOHL-RABI

(202) EARLY WHITE VIENNA. Thickened stems, formed just above ground, resembling apples, are pale whitish green color with delicate cabbage-like flavor, most delicious. Plant seed like cabbage seed, transplant plants and gather while skin is tender, slice and prepare for table. You will relish the tender bulbs. Packet, 10c. Oz., 25c. ¼ Lb., 75c. Lb., \$2.50.



(210) HASTINGS' BIG BOSTON LETTUCE

LETTUCE

1 OZ. PLANTS 200 FEET OF ROW OR MAKES 3,000 PLANTS

(210) BIG BOSTON. Butter Head type. Our strain is the best in the world; extra large, round, firm heading and makes a fine appearance. It is the standard market and shipping variety, remarkably uniform and sure header. Very satisfactory for home gardens. Packet, 10c. Oz., 20c. ¼ Lb., 50c. Lb., \$1.50.

(211) DRUMHEAD WHITE CABBAGE LETTUCE. Also called New York or Wonderful and Los Angeles Market. Crisp Leaf type. Superb for home gardens and market. Large size, large, crisp, tender leaves, free from all bitter taste. Outer leaves light green with inside almost pure white; a fine header and entirely satisfactory. Packet, 10c. Oz., 25c. ¼ Lb., 75c. Lb., \$2.50.

(216) HASTINGS' ICEBERG. Crisp Leaf heading type. Beautiful and useful variety for home use, outdoors and for forcing. Heads conical, medium size, leaves tightly folded and inside blanched white. Outside leaves crinkled and light green with edges faintly bronzed. Exceedingly crisp and tender and very popular. Packet, 10c. Oz., 20c. ¼ Lb., 60c. Lb., \$2.00.

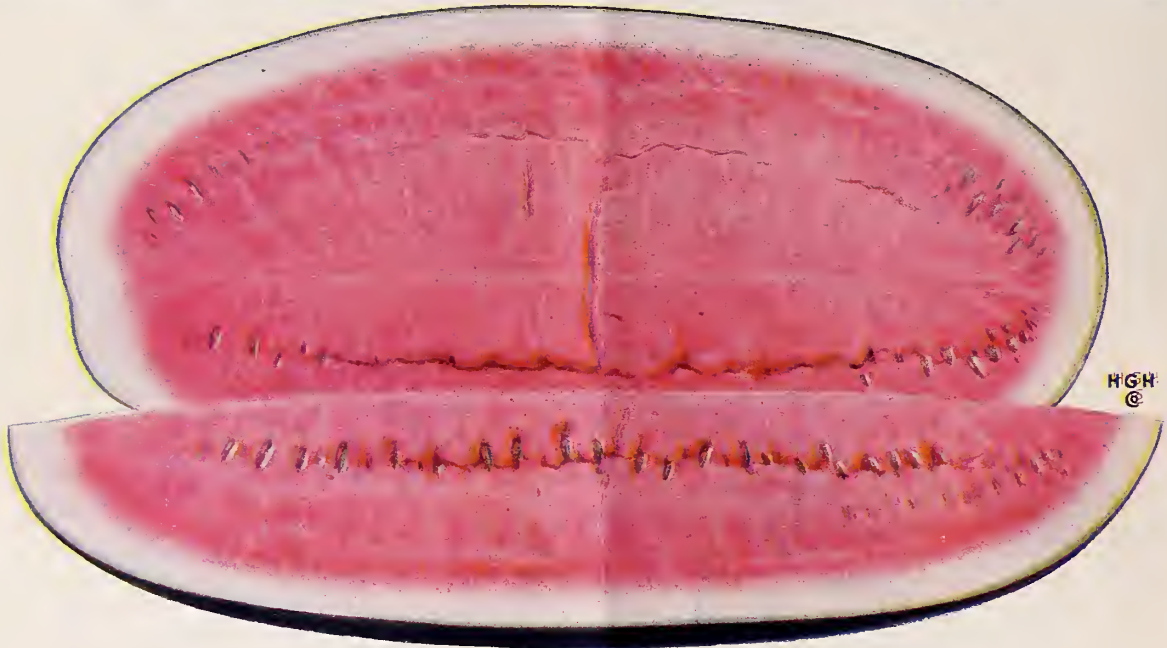
(220) CALIFORNIA CREAM BUTTER. Butter head type. Also called Royal. Heads large and solid, inside blanched creamy yellow. Very sweet and juicy and fine for open ground planting at all seasons in the South. Pure strain distinguished by very small spots on outer leaves. Packet, 10c. Oz., 20c. ¼ Lb., 50c. Lb., \$1.50.

(217) COS-WHITE PARIS. This is true Romaine, the Celery Lettuce. Crisp, long, spoon-shaped tender leaves with delicate flavor formed into sugar-loaf shaped heads that blanch inside when tied. Packet, 10c. Oz., 25c. ¼ Lb., 75c. Lb., \$2.50.



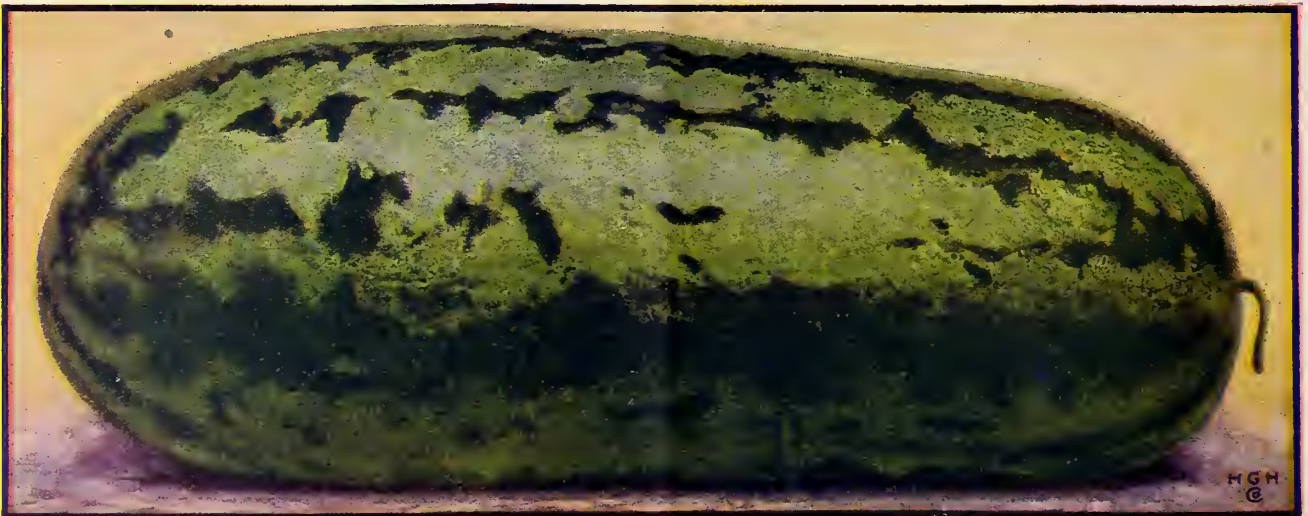
(216) HASTINGS' ICEBERG LETTUCE

HASTINGS' SOUTHERN GROWN WATERMELON SEED



(255) HALBERT HONEY, THE FAMOUS SWEET WATERMELON SO POPULAR THROUGHOUT THE SOUTH

(255) **HALBERT HONEY.** This is a sweeter melon than the old Kleckley Sweet and without the strings in the flesh. No stringy pulp is left even after the largest bite of "heart." It is the sweetest of all melons except our new Stone Mountain and its delicious crimson-red flesh extends nearly to the skin. It is early, prolific, of good size and with dark green skin. It is a wonderful eating melon for home use and nearby markets. Rind is too thin and tender for shipment. Packet, 10c. Oz., 15c. $\frac{1}{4}$ Lb., 40c. Lb., \$1.25. Not Prepaid—10 Lbs. or over, \$1.00 per Lb. Write for best prices on large quantities of all melon seeds.



(252) A GOOD, SWEET, JUICY OLD-TIME AUGUSTA RATTLESNAKE WATERMELON GROWN FROM HASTINGS' SEED

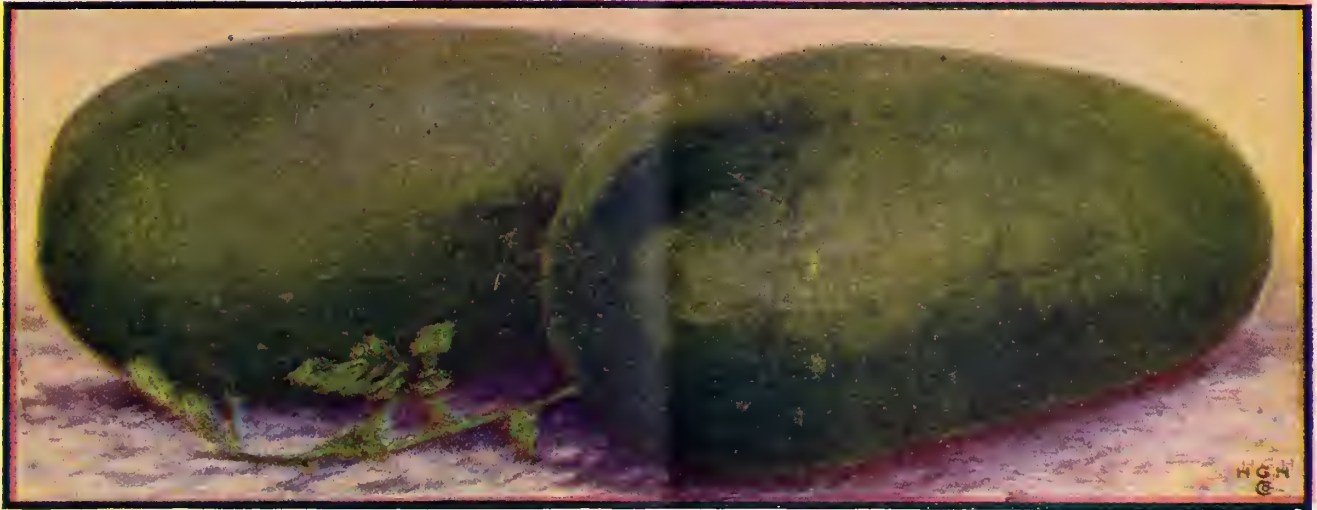
(252) **HASTINGS' AUGUSTA RATTLESNAKE.** This melon made Georgia famous as the finest melon-growing State. See the characteristic picture above. Ours is the pure Rattlesnake strain, producing large oblong melons often weighing 60 to 75 pounds on good watermelon land. It is sweet and meaty, the best second early melon to plant. Packet, 10c. Oz., 15c. $\frac{1}{4}$ Lb., 40c. Lb., \$1.25. Not Prepaid—10 Lbs. or over, \$1.00 per Lb.

(257) **THURMOND GRAY.** A mighty fine melon, originated in Georgia and even better than our Irish Gray. Equal to the Watson for both home use and shipping. Sweet, red flesh, crisp, free from strings, vigorous grower, uniformly shaped, thin but very tough rind. Skin color is a light mottled gray-green. Really, this is a wonderful watermelon. Packet, 10c. Oz., 15c. $\frac{1}{4}$ Lb., 40c. Lb., \$1.25. Not Prepaid—10 Lbs. or over, \$1.00 per Lb.

(260) **HASTINGS' IMPROVED KLECKLEY SWEET. ALSO CALLED WONDER MELON.** The old Kleckley Sweet was a good melon in its day and popular everywhere, but it could never compare with this new variety. Hastings' Improved is large, heavy, uniformly oblong, dark green skin, rather thin rind, rich scarlet flesh, sweet and of excellent quality. For home and nearby market use. See Picture on Front Cover. Packet, 10c. Oz., 15c. $\frac{1}{4}$ Lb., 40c. Lb., \$1.25. Not Prepaid—10 Lbs. or over, \$1.00 per Lb.

(259) **HASTINGS' FLORIDA FAVORITE.** Our special selection has given us an unsurpassed extra early, good quality, medium rind, medium sized melon for home and market use. Dark green, irregularly striped lighter green, prolific and the best extra early melon. Flesh red, very crisp, tender and juicy. Packet, 5c. Oz., 10c. $\frac{1}{4}$ Lb., 30c. Lb., \$1.00.

FOR THE FINEST WATERMELONS GROWN IN AMERICA



(258) THE WATSON OR TOM WATSON WATERMELON—THE STANDARD WATERMELON FOR HOME USE, NEARBY MARKETS AND SHIPPING

(258) WATSON OR TOM WATSON. Seed grown from the original stock, which we have kept pure, and not the "run-out" seed generally sold. It's good at all times and for all purposes; the greatest selling melon there is. For shipping or home use it is wonderful. See picture above of two average melons. Packet, 10c. Oz., 15c. $\frac{1}{4}$ Lb., 40c. Lb., \$1.25. Write for quantity prices.

(254) HASTINGS' NEW STONE MOUNTAIN MELON. The greatest watermelon ever grown for home and also market use. The largest in size, heaviest, sweetest, juiciest, solid throughout with fewest seeds of any melon ever introduced. Eat a great big chunk of heart, and it's most all heart, of a cold Stone Mountain melon and you'll never want to taste any other kind. It's big, dark green, almost round or "square-shaped," thin rind, deep colored watermelon-pink flesh, seeds white with brown edges. Our own new introduction, originally grown in plain sight of Stone Mountain, near Atlanta, the world's largest mountain of solid granite, for which we named this finest of all melons. Very heavy producer and hardiest of all. Packet, 15c. Oz., 25c. $\frac{1}{4}$ Lb., 65c. Lb., \$1.50.

25c HOME MELON COLLECTION

Home Garden Collection. 5 Packets, 25c. One full size packet each of Augusta Rattlesnake, Watson, Improved Kleckley Sweet, Hastings' Stone Mountain and one packet of Hastings' Eden Gem Cantaloupe, pictured on Page 9; all fine varieties for home use. This collection will furnish any ordinary family a plenty of first class melons all season. 55 cents worth of melon seed for 25c, postpaid.

4-OUNCE MELON COLLECTION

4 Ounces, 35c

Many prefer fewer varieties and more of each kind. For 35c we will send you, postpaid, one ounce each of Florida Favorite, Augusta Rattlesnake, Watson, Imp. Kleckley Sweet and one packet of Hastings' Stone Mountain Watermelon, best of all. 70c worth for only 35c.



(254) HASTINGS' NEW STONE MOUNTAIN—SWEETEST, JUICIEST, BEST MELON YET



(296) HASTINGS' PRIZETAKER ONION

ONIONS

1 Oz. Plants 200 Feet of Row

(296) **HASTINGS' PRIZETAKER.** Light straw colored skin, pure white flesh, very fine grained, rather mild flavor, with good keeping qualities. Large onion. Packet, 10c. Oz., 25c. $\frac{1}{4}$ Lb., 75c. Lb., \$2.50.

(288) **YELLOW BERMUDA.** Mildest of all; flat shaped, very light yellow. We started Bermuda Onion growing in America and today the crop is worth millions of dollars. Fine for home gardens. Packet, 10c. Oz., 45c. $\frac{1}{4}$ Lb., \$1.25. Lb., \$4.00.

(297) **AUSTRALIAN BROWN, THE LONG KEEPER.** Late maturing, neat, round shape, firm, solid; pungent flavor; amber brown skin color. Fine for storing for winter use. Bermuda, Prizetaker and Australian Brown gives you early, medium and late Onions for eating practically the whole year round. Packet, 10c. Oz., 25c. $\frac{1}{4}$ Lb., 75c. Lb., \$2.50.

ONION PLANTS. Genuine Yellow Bermuda and Hastings' Prizetaker. 200 Plants of same variety, 50c. 500 of same variety, \$1.25. 1,000 of same variety, \$2.50. By mail, postpaid. No split hundreds sold. No plants sent C. O. D.



(357) HASTINGS' NEW ROYAL KING PEPPER



(288) HASTINGS' WHITE OR YELLOW BERMUDA ONIONS—BEST ON EARTH

HASTINGS' GEORGIA PEPPERS

1 Oz. Makes About 1000 Good Plants

(357) **HASTINGS' ROYAL KING.** Our 1917 introduction. The finest Bell Pepper in existence for home use or shipping to market. Most regular of all in size and shape; very prolific, large size, mild, thick flesh with lobes well filled out. Best of all. Packet, 10c. $\frac{1}{2}$ Oz., 20c. Oz., 35c. $\frac{1}{4}$ Lb., \$1.25. Lb., \$4.00.

(358) **HASTINGS' PERFECTION PIMENTO.** This is the finest strain of Pimento, just as Royal King is the best Bell Pepper. Mildest flavor of all; thick firm flesh, uniformly heart shaped. Fine for salads, canning, stuffing or eating raw. Packet, 10c. $\frac{1}{2}$ Oz., 20c. Oz., 30c. $\frac{1}{4}$ Lb., 90c. Lb., \$3.00.

(359) **RUBY GIANT.** Very large; mild, thick, sweet flesh; early maturing and ideal for home gardens. It sells on sight for market gardeners. Packet, 10c. $\frac{1}{2}$ Oz., 20c. Oz., 35c. $\frac{1}{4}$ Lb., \$1.25. Lb., \$4.00.

(349) **LONG CAYENNE—HOT PEPPER.** Burning hot and very pungent. True type of long red pepper and the kind to dry for winter use. Packet, 10c. $\frac{1}{2}$ Oz., 20c. Oz., 35c. $\frac{1}{4}$ Lb., \$1.25. Lb., \$4.00.

(351) **HASTINGS' MIXED PEPPERS.** Our own mixture of all kinds of Peppers—hot and sweet, big and little, early and late. All sorts from one planting and a splendid assortment for the home garden. Packet, 10c. 3 Pkts., 25c.

Note! Write for prices on quantity lots and on other varieties.

HASTINGS' NURSERY CATALOG

Write for our Nursery Annual if you are at all interested in beautifying your home. Flowering and Ornamental Shrubs, Broad Leaf and Coniferous Evergreens, Shade Trees, Fruit Trees, Berries, Pecans, Own-Root and Budded Roses, Vines and the finest and most popular Bulb varieties of flowers are described and pictured in our Nursery Annual.

All are needed in beautifying your home and the biggest thing to remember about Nursery Plantings is that they grow more valuable each year and make your home place more valuable and beautiful each year.

Hastings' Service is a complete service for "Everything That Grows" and "Everything For The Garden." Over half a million families depend faithfully on Hastings' each year for the best seeds, plants and bulbs that it is possible to obtain. We want you to depend on us too, for all your planting needs. We are as near as your mail box.



(358) HASTINGS' PERFECTION PIMENTO PEPPER

GARDEN OR ENGLISH PEAS

2 Pounds Plants 100 Feet of Row

(316) **HASTINGS' JOHN L.** Earliest of all peas for home, market or shipping. Prolific for round seeded extra early and very valuable in the South to mature before hot weather; hot weather always cuts down pea yields. Packet, 10c. ½ Lb., 20c. Lb., 40c. 2 Lbs., 75c.

(317) **ALASKA EXTRA EARLY.** A week later than John L. and the best quality and heaviest bearer of all round seeded extra early varieties. Pods 2½ inches long, round, straight and blunt ended, usually containing 6 peas. Fine for home, canning and marketing. Packet, 10c. ½ Lb., 20c. Lb., 40c. 2 Lbs., 75c.

(315) **HASTINGS' EXTRA EARLY SURPRISE.** The extra early wrinkled pea that beats all for earliness, heavy bearing and eating quality combination. The 24-inch vines need no support; 2½-inch light green pods contain 6 peas. Packet, 10c. ½ Lb., 25c. Lb., 45c. 2 Lbs., 80c.

(323) **THOMAS LAXTON.** The finest pea in cultivation today. Hardy early wrinkled pea and heavy bearer of 3¼-inch long, straight, well filled pods with usually 7 greenish cream colored, tender, fine flavored peas in each. Packet, 10c. ½ Lb., 25c. Lb., 45c. 2 Lbs., 80c.

(324) **LAXTONIAN.** This new large podded pea is fast gaining favor. Of dwarf growth, medium dark green vines and 4-inch pointed pods producing a fine quality of peas. Vigorous and prolific. Largest podded of the dwarf varieties. Packet, 10c. ½ Lb., 25c. Lb., 45c. 2 Lbs., 80c.

(329) **BLISS EVERBEARING.** The greatest favorite among our customers for home gardens and nearby markets. Large pods with 5 to 6 fine flavored wrinkled peas. Especially noted for its continued bearing, making more blossoms and pods even after repeated picking. Very vigorous and of branching character, standing well in double rows without staking or brushing. Packet, 10c. ½ Lb., 20c. Lb., 40c. 2 Lbs., 75c.

(328) **HOME DELIGHT.** Heavy bearing home garden variety, very strong grower and enormously productive of sweet, tender peas. Stocky plants need no support if planted in double rows 6 inches apart and 2 feet between double rows. Packet, 10c. ½ Lb., 20c. Lb., 40c. 2 Lbs., 75c.

(327) **HASTINGS' IMPROVED TELEPHONE.** Best tall growing wrinkled peas for home and market. Grows 4 to 6 feet tall, needs support, immensely productive with 25 or more pods to each vine. Large 4½-inch pods with 8 sugary flavored peas. Packet, 10c. ½ Lb., 20c. Lb., 40c. 2 Lbs., 75c.



(316) JOHN L. EXTRA EARLY PEAS

(333) SUGAR CROWDER PEAS---FOR TABLE USE

One of the earliest to mature, one of the most prolific and best flavored for table Peas. Sugar Crowders have been in great demand for years but there has been no suitable supply in anywhere near the quantity demanded. We started growing them in 1921 on the Hastings' plantation, but with increased plantings each year we've never been able to supply the great demand for these fine Peas. However, we harvested a wonderful crop last fall and hope to meet the demand this year.

Send your order in early for these delicious Peas. Pods are long, completely filled with as many as 21 crowded peas of sugary flavor and excellent quality. They make a large vine growth to use for forage and for a soil improver by plowing under the vines. They are the best of all field peas for eating purposes. Packet, 10c. Lb., 40c. 2 Lbs., 70c.

(341) **LADY PEAS.** Lady or Gallivant Peas are about the smallest, sweetest flavored of all the field peas for table use. They make good vine growth and are exceptionally heavy bearing. They are used in both the green and dry stages and are very popular. Lady Peas shouldn't be classed with cow or field peas because they are really table peas, mighty fine for your garden and table. Plant some this year. Hastings' Plantation Green Seed. Packet, 10c. Lb., 40c. 2 Lbs., 70c.

(340) **LARGE BLACK-EYE.** The standard large black-eye table peas. Good either as "snaps" or dry. Peas are large, vines tall and this is the most prolific black-eye variety. Known all over the country. Packet, 10c. Lb., 40c. 2 Lbs., 70c.

QUANTITY PRICES—Prices in this Special Catalog are for items with postage paid to your address. Where you need 5 Lbs. or over of vegetable seeds or 10 Lbs. or over of field seeds it will pay you to write us when you are ready to buy for a special quotation on just the amount you want.

We are qualified, as is no other seed house, to supply you with the kind of seeds, plants and bulbs that will pay you to plant. You know that cheap seeds are seldom worth planting; good seeds are always worth their cost. For actual value and worth, write us for our best quantity prices.



(317) ALASKA PEAS

HASTINGS' GENERAL CATALOG

This Special Color Catalog serves over 400,000 people each year. It is a distinct and valuable hook and plays a big part in making and keeping Hastings the greatest mail-order seed house in America as well as by far the largest in the South.

This color catalog is a condensed list of our best offers, varieties especially recommended and seeds, plants and bulbs that are most popular and most generally satisfactory over the entire South. Each item listed is the best of its kind in color, shape, flavor or other outstanding virtue. You can depend on each one to make as much for you as your soil, cultivation and season allows.

Our big, new, 112-page, general catalog of seeds, plants and bulbs for spring planting is also ready at this time. It includes the best varieties of just about "Everything That Grows" for spring and summer planting. Send in your order for everything you need from this Color Catalog but be sure to write for the big catalog if there is anything else you need. It is the Southern Planting Guide, valuable for its accurate descriptions, pictures from actual photographs, culture directions and suggestions.

As Hastings' Seeds, Plants and Bulbs are The Standard of the South, so also is this big catalog the standby for all Southern plantings. You need it in your home for ready reference and it comes in handy most every day, wherever planting is done. Write for it today.



(329) HASTINGS' BLISS EVERBEARING PEAS

HASTINGS' RADISH SEED

(376) **HASTINGS' EARLY LONG SCARLET.** See picture. The most popular long variety for both home garden and market. Tops are rather small, roots long and tapering, color intense bright scarlet. Flesh is crisp and tender and free from any pungent taste if grown rapidly, as all Radishes should be grown. Packet, 5c. Oz., 10c. $\frac{1}{4}$ Lb., 30c. Lb., \$1.00.

(382) **LONG WHITE ICICLE.** Excellent and profitable. Very early, with small tops, clear white in color, very long, slender, crisp, brittle; mild, sweet flavor. A fine variety for home or market, especially desirable for its white skin and fine flavor. Packet, 5c. Oz., 10c. $\frac{1}{4}$ Lb., 30c. Lb., \$1.00.

(383) **HASTINGS' GLASS. ALSO CALLED CIN-CINNATI MARKET.** Our introduction and one of the finest. Bright pink with white tips; very regular in size and shape. Long and tapering, flesh transparent, always crisp and brittle, mild even when grown to large size. Packet, 5c. Oz., 10c. $\frac{1}{4}$ Lb., 30c. Lb., \$1.00.

(375) **ROSY GEM.** See picture. **ALSO CALLED "WHITE TIPPED SCARLET BALL."** Very early, globe shaped with rich, deep scarlet top shading

to pure white at bottom. Very tender and crisp, never becoming pithy until very old. Most popular for home gardens and a favorite among market gardeners. Packet, 5c. Oz., 10c. $\frac{1}{4}$ Lb., 30c. Lb., \$1.00.

(381) **SCARLET BUTTON.** Round; deep scarlet skin; mild, crisp and very tender; short, narrow leaves making a small top. The round or button shape is most popular for home gardens and this is just as fine as Rosy Gem and without the white tips. Packet, 5c. Oz., 10c. $\frac{1}{4}$ Lb., 30c. Lb., \$1.00.

(387) **HASTINGS' MIXED RADISHES.** Many like a number of different types and varieties from one planting so we make up this splendid mixture of every variety we list in our regular catalog except winter Radishes. Early, medium and late kinds; round, olive-shaped and long ones. Packet, 5c. Oz., 10c. $\frac{1}{4}$ Lb., 30c. Lb., \$1.00.

HASTINGS' COMPLETE GARDEN, 95c

We think a great deal of this Special Color Catalog and we want you to benefit by it. Everything listed carries our highest recommendation. Chiefly, however, we want to call your particular attention to our "Complete Garden"—18 different vegetables, 6 different varieties of Gladiolus, 5 different kinds of flower seeds—all full size packets of seeds and first size Gladiolus bulbs. These are pictured on Pages 2 and 3.

This great offer, \$2.65 worth of Hastings' seeds and bulbs for only 95 cents, is frankly the biggest garden bargain we have ever made or heard of. It is made as an introductory offer because we want you for a regular customer and are certainly making it worth your while.

SQUASH

(420) **HASTINGS' MAMMOTH WHITE BUSH.** See picture. Early, uniform in shape, very large, prolific. Beautiful clear white skin and flesh and grows 10 to 12 inches across. Fine for home gardens and local markets. Packet, 10c. Oz., 15c. $\frac{1}{4}$ Lb., 40c. Lb., \$1.25.

(425) **EARLY WHITE BUSH OR PATTY PAN.** Well known and popular everywhere. Very early, productive, finest grained, medium sized, scalloped edges; light cream colored skin and flesh. Fine for all purposes. Packet, 10c. Oz., 15c. $\frac{1}{4}$ Lb., 40c. Lb., \$1.25.

(421) **YELLOW SUMMER CROOKNECK.** See picture. Well known home and market variety. Small fruit of bright orange-yellow, covered with warty excrescences. Fine grained, rich buttery flavor, best quality and exceedingly prolific. Best of all Squash. Packet, 10c. Oz., 15c. $\frac{1}{4}$ Lb., 40c. Lb., \$1.25.

(426) **GIANT SUMMER CROOKNECK.** Similar to Yellow Summer Crookneck but nearly twice as large. Too large to ship but all right for home and local markets, giving big yields. Packet, 10c. Oz., 15c. $\frac{1}{4}$ Lb., 40c. Lb., \$1.25.

(424) **EARLY YELLOW BUSH.** Identical with Early White Bush except in color, which is a bright golden yellow. Packet, 10c. Oz., 15c. $\frac{1}{4}$ Lb., 40c. Lb., \$1.25.

ATTENTION! Write for special prices on 5 Lb. lots or over of vegetable seeds. It pays to plant Hastings' Seeds for market crops.



(376) RADISH



(375) ROSY GEM RADISH



(425) EARLY WHITE BUSH SQUASH



(421) YELLOW SUMMER CROOKNECK SQUASH

HASTINGS' TOMATOES

1 Oz. of Seed Makes About 1,500 Strong Plants

(463) **HASTINGS' BRIMMER.** The largest of all tomatoes and far better than Ponderosa. No other can compare with it in size, weight, solidity, meatiness; splendid, free from acidity taste. Greatest home garden tomato and one you want above all others. Packet, 10c. $\frac{1}{2}$ Oz., 35c. Oz., 60c. $\frac{1}{4}$ Lb., \$2.00. Lb., \$7.50.

(445) **REDFIELD BEAUTY.** The most satisfactory tomato grown for all purposes. Glossy purplish crimson, regular fruits, solid through, tough skin that doesn't split, excellent flavor. All right in every way, the greatest selling variety we have ever had. Packet, 10c. $\frac{1}{2}$ Oz., 25c. Oz., 40c. $\frac{1}{4}$ Lb., \$1.25. Lb., \$4.00.

(452) **DWARF CHAMPION.** Second early, stiff upright growth needing no staking, medium size, very regular, purplish pink fruits and smooth skin. Packet, 10c. $\frac{1}{2}$ Oz., 25c. Oz., 40c. $\frac{1}{4}$ Lb., \$1.25. Lb., \$4.50.

(446) **LIVINGSTON GLOBE.** Almost all come true globe shaped; regular, smooth, good size purplish-pink firm fruits with few seeds. Packet, 10c. $\frac{1}{2}$ Oz., 25c. Oz., 45c. $\frac{1}{4}$ Lb., \$1.50. Lb., \$5.00.

(441) **IMPROVED PURPLE ACME.** One of the finest and most satisfactory home garden tomatoes. Early, very heavy bearer, purplish pink. Packet, 10c. $\frac{1}{2}$ Oz., 20c. Oz., 35c. $\frac{1}{4}$ Lb., \$1.00. Lb., \$3.50.

(455) **RED ROCK.** Beyond question, the best large, late, red tomato for home use, local market and for canning. Exceptionally solid, smooth, very finest flavor. See picture. Packet, 10c. $\frac{1}{2}$ Oz., 20c. Oz., 35c. $\frac{1}{4}$ Lb., \$1.00. Lb., \$3.50.

(462) **MARGLOBE.** Newest wilt-resistant, main crop, scarlet-fruited Tomato. Also seems resistant to "nail head rust." Medium size, smooth, solid and deep from stem to blossom ends. Fine for home and market. Packet, 10c. $\frac{1}{2}$ Oz., 30c. Oz., 50c. $\frac{1}{4}$ Lb., \$1.75. Lb., \$6.00. 5 Lbs., \$25.00.

SPRING TURNIPS

1 Oz. Plants 200 Ft. of Row—Plant 2 to 3 Lbs. per Acre

BIG 7 TURNIP COLLECTION. The most popular collection of Turnips in America. One Full Ounce each of the 7 varieties below, postpaid, for only 35 cents.

(466) **EARLY RED OR PURPLE TOP STRAP LEAF.** See picture above. Medium size, quick grower, flat shaped, fine grained sweet white flesh. Very popular. See Prices Below.

(467) **EARLY WHITE FLAT DUTCH.** Identical with (466) except the skin is pure white. See Prices Below.

(469) **YELLOW OR AMBER GLOBE.** Also called Yellow Stone. The best yellow fleshed Turnip. Globe shaped, fine grained, sweet, good keeper and heavy cropper. Light yellow skin. See Prices Below.

(477) **SEVEN TOP.** The "salad" or "greens" variety. Root is small, not as good as others, but largely planted for greens all over the South. See Prices Below.

(475) **PURPLE OR RED TOP GLOBE.** See picture. Best all-round Turnip. Medium early, globe shaped, very heavy cropper, handsome appearance, good quality, splendid keeper and seller. See Prices Below.

(476) **WHITE EGG.** Favorite spring variety; finest flavored of all Turnips and skin and flesh is snow white. Solid, fine grained, sweet and very attractive seller. See Prices Below.

(468) **HASTINGS' IMPROVED AMERICAN RUTABAGA.** Best and heaviest cropper of all Rutabagas. Purple top and light yellow flesh, small tops; flesh tender and sweet. Prices Below.

PRICES ALL TURNIPS—Each:—Packet, 5c. Oz., 10c. $\frac{1}{4}$ Lb., 25c. Lb., 75c. 5 Lbs. or over, 60c per Lb.

Write for quantity prices on 5 Lb. lots or over of all vegetable seeds when ready to buy. It will pay you.



(466) EARLY RED OR PURPLE TOP TURNIP



(475) HASTINGS' PURPLE OR RED TOP GLOBE TURNIP



(455) RED ROCK—THE BIG RED SOLID MEATY TOMATO



(445) HASTINGS' REDFIELD BEAUTY TOMATO—THE VERY BEST

HASTINGS' PROLIFIC CORN

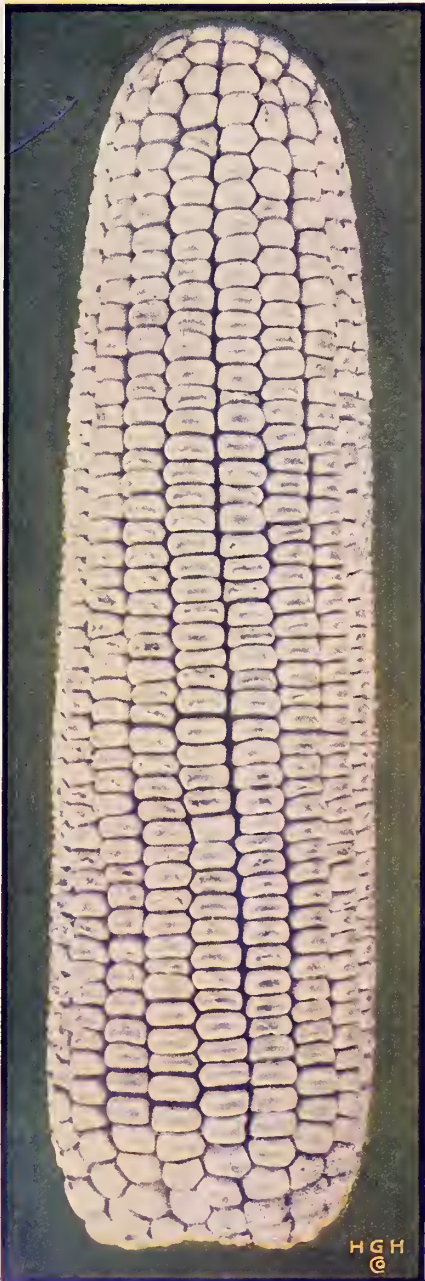
(140) HASTINGS' PROLIFIC CORN.

Finest in quality. A wonderful producer of Grain and Forage. The Prize-Winning Corn of the South for you to plant.

The prosperity of the South, so greatly increased during the past few years, has been due to building up lands and producing all the grain needed on all up-to-date farms. Hastings' Prolific is the greatest producer of corn for the South. It will make more per acre than other kinds, and is also very good for "Roasting Ears." This variety has won more "yield" prizes in the South in the last ten years than all others combined.

Packet, 10c. Lb., 30c. 2 Lbs., 50c.

Not Prepaid—Peck, \$1.00. Bushel, \$3.75.
2 Bushels, \$7.00.



(140) HASTINGS' PROLIFIC CORN

SWEET AND ROASTING EAR CORN

1 Lb. Plants 200 Hills—Plant 14 Lbs., Peck, Per Acre

(151) YEXO SUGAR CORN. Our introduction, earliest true sweet corn; 2 to 3 medium ears to stalk, tender and fine flavor. Packet, 10c. Lb., 40c. 2 Lbs., 70c.

(152) COUNTRY GENTLEMAN. Finest quality mid-season sort; 2 to 3 good ears to stalk, small, deep grains, excellent flavor. Packet, 10c. Lb., 40c. 2 Lbs., 70c.

(153) STOWELLS EVERGREEN. Standard main crop variety. Large, long, well-filled ears of deep white grains. Extra fine. Packet, 10c. Lb., 40c. 2 Lbs., 70c.

(150) TRUCKERS FAVORITE. 100-Day Corn, not a sweet corn, but the best for roasting ears in 65-85 days of all corns. Beautiful appearance; excellent home and market corn. Packet, 10c. Lb., 30c. 2 Lbs., 50c. Not Prepaid—Pk., \$1.25. Bu., \$4.00.

(610) HASTINGS' MUNG BEANS

(610) HASTINGS' MUNG BEANS. The wonderful new soil building, hay and grain crop that beats Cowpeas, Soy Beans and Velvet Beans combined. It's a big success all over the South, beats the Mexican Bean Beetle, gets a good stand on any kind of land, makes excellent heavy tonnage of hay, matures well ahead of frost, holds its leaves after beans are picked and carries more soil bacteria than other legumes. Plant in 3½-foot drills, only 4 pounds per acre; broadcast 12 lbs. per acre or plant between corn rows 2 lbs. per acre. Bulletin on Mung Beans on request. 1 Lb., 50c. Acre Package, 4 Lbs., \$1.50. Write for quantity prices.

(550) HASTINGS' EVERGREEN LAWN GRASS

(550) HASTINGS' EVERGREEN LAWN GRASS. See picture below. Make your "Home Beautiful" with a real Hastings' Evergreen Lawn. The most beautiful lawns in Atlanta and all over the South are Hastings' Evergreen Lawns. This is our own mixture, proved by years of lawn making to be the best for the South. It contains only grasses that grow successfully in the South and you cannot buy it elsewhere. 5 lbs. plants 1,000 square feet (20 by 50 ft.). PRICE: Lb., 50c. 5 Lbs., \$2.25. Quantity prices on request.

Write for special shady lawn, sunny lawn, golf, polo and pasture mixtures.



(550) HASTINGS' EVERGREEN LAWN GRASS—BEST FOR THE SOUTH

HASTINGS' ASTERS

(1060) **HASTINGS' UNRIVALLED MIXED.** Made up of 20 varieties of the finest Asters grown. The exquisite blooms, early, medium and late, make delightful cut flowers, last a long time in water and for bed or border display are beautiful. Packet, 10c. 3 Pkts., 25c. Oz., \$1.25.

(1066) **AMERICAN BRANCHING ASTERS, MIXED.** Strong growing, late type with long petals, full flowers borne on long stems. Plants 24 to 30 inches high. (1068) Rose Color, (1070) Flesh Color, (1072) White, (1074) Purple. Each—Packet, 10c. Oz., \$1.50.

(1080) **COMET or GIANT CREGO ASTERS, MIXED.** Also called Ostrich Plume. Midseason blooms, very long, twisted and curled petals. Branching type with long stems. (1082) Crimson, (1084) White, (1086) Lavender. Each—Packet, 10c. Oz., \$1.50.

(1096) **QUEEN OF MARKET ASTERS, MIXED.** Extremely early and profuse bloomers of compact branching habit with medium sized blooms. Best type for the South. (1098) Crimson, (1100) White, (1102) Lavender. Each—Packet, 10c. Oz., \$1.50.



(1096) **QUEEN OF THE MARKET ASTER—PKT., 10c.**



AMERICAN BRANCHING ASTER

ANTIRRHINUM OR SNAPDRAGON

Our large flowering varieties are extremely popular. They bloom the first season and last for years with slight winter protection.

- (1040) **FORMULA MIXTURE.** Finest mixture grown. Packet, 10c. Oz., \$1.25.
- (1041) **SILVER PINK.** Pearly-pink self. Florists' strain. Packet, 10c. Oz., \$2.50.
- (1042) **DEFIANCE.** Richest orange-scarlet; finest fiery red. Packet, 10c. Oz., \$2.00.
- (1044) **PURITY.** Finest pure white; florists' strain. Packet, 10c. Oz., \$1.50.
- (1046) **GOLDEN QUEEN.** Richest lemon-yellow. Excellent. Packet, 10c. Oz., \$1.00.

ALYSSUM

Free flowering annual of quick growth, beginning to bloom in early spring and continuing for a long time. Excellent for borders and outside rows of flower beds. Plants are literally covered with many small spikes of fragrant white blossoms.

- (1020) **ALYSSUM, SWEET.** See picture below. Grows 5 to 10 inches high, white, sweetly fragrant; excellent for low borders and edging. Packet, 5c. 1/2 Oz., 30c. Oz., 50c.
- (1022) **ALYSSUM, LITTLE GEM.** Plants very dwarf, 3 to 4 inches high, spreading, uniform growth and covered with white fragrant bloom. Excellent for edging. Packet, 10c. 1/2 Oz., 35c. Oz., 60c.

BALSAM OR LADY SLIPPER

- Old fashioned Touch-Me-Not, improved with large, handsome, profusely flowered spikes.
- (1177) **FINE MIXED.** Fine double flowers; all colors. Packet, 10c.
- (1178) **ROYAL PRIZE CAMELLIA FLOWERED, MIXED.** Packet, 15c. Oz., \$1.00.
- (1179) **CAMELLIA FLOWERED, Scarlet Color.** Packet, 10c. Oz., 75c.
- (1180) **CAMELLIA FLOWERED, Pure White.** Packet, 10c. Oz., 75c.
- (1181) **CAMELLIA FLOWERED, Blue Color.** Packet, 10c. Oz., 75c.

CELOSIA OR COCKSCOMB

Plants with abnormally large flower heads or combs; very showy and of easiest culture. They often hold their brilliant coloring until frost and if cut can be dried for showy winter display.

- (1265) **CELOSIA CRISTATA.** The real fiery red "cockscombs." Packet, 10c. Oz., \$1.00.
- (1270) **CELOSIA PLUMOSA.** Heads loose and feathery. Mixed colors. Packet, 10c. Oz., \$1.00.
- (1272) **CHINESE WOOLFLOWER.** Dark crimson-scarlet heads. See picture. Packet, 15c. 2 Packets, 25c.

HASTINGS' HYBRID COLEUS

There are no finer decorative plants for the South. For beds, edging, porch or window boxes. Coleus makes a beautiful ornamental foliage display. They are tender perennials, fast growing and the varicolored striped and blotched leaves are of luxuriant beauty.

- (1310) **HASTINGS' HYBRIDS.** Our mixture of the finest exhibition sorts. Packet, 25c.



ANTIRRHINUM SNAPDRAGON

CAMELLIA FLOWERED BALSAM



SWEET ALYSSUM



HASTINGS' HYBRID COLEUS



CELOSIA CHINESE WOOLFLOWER

CALLIOPSIS OR COREOPSIS

Bright, showy annual that blooms profusely. 1 to 2 feet high, shades of yellow, rich brown and red—popular old-fashioned garden colors and fine for a wild effect in cut flowers and garden. Single and double flowers.

(1216) **CALLIOPSIS SPLENDENS.** Beautiful, brand new, brilliant single yellow variety. See picture below. Packet, 10c. 3 Pkts., 25c.

(1217) **TALL MIXED.** 1½ to 2 feet high. All colors for a fine wild flower effect. Packet, 5c. Oz., 50c.

(1218) **DWARF MIXED.** The finest fully double blooms of rich, brilliant colors. Packet, 10c. Oz., 50c.

CARNATIONS

Easily grown from seed. The double flowered varieties are not fully developed until second year but Chabauds and Marguerites bloom in 4 to 6 months from seeding.

(1240) **DOUBLE MIXED.** All colors, some should bloom first year. Saved from finest flowers only. Packet, 15c. 2 Pkts., 25c.

(1242) **CHAUBAUD.** Vigorous plants, blooming in 5 months from seed. Fragrant double flowers of the finest colors. Packet, 15c. 2 Pkts., 25c.

(1244) **GRENADIN.** Double brightest scarlet red. Brilliant coloring and fairly double. Really a beauty. Packet, 15c. 2 Pkts., 25c. Oz., \$4.00.

(1246) **MARGUERITE.** Everblooming type, blooming in 4 months. Small, prolific bloomer; earliest. Mixed colors. Packet, 10c. 3 Pkts., 25c. Oz., \$2.00.

CENTAUREAS

Hardy flowering annuals for beds, borders and for cut flowers. Tall, slender, graceful stems; narrow leaves with bright colored flowers.

(1280) **DUSTY MILLER.** Silvery gray leaves; 1 foot high. Packet, 10c. Oz., \$2.00.

(1282) **BACHELOR'S BUTTON.** Cornflower. Blue Bottle, Ragged Sailor or Ragged Robin. Centaurea Cyanus. See picture below. Very popular. Mixed. Packet, 5c. Oz., 50c.

(1283) **BLUE CYANUS.** Same as 1282 except blue only. Packet, 10c. Oz., 75c.

(1284) **SWEET SULTAN.** Centaurea Imperialis. Very large flowers, 3 to 4 inches across; long stems; shades of red, blue, purple, lilac, etc. Packet, 10c. Oz., \$1.00.

COSMOS

Handsome, free flowering annual. Plants 4 to 6 feet tall and covered with red, white and pink. **EXTRA EARLY DOUBLE CRESTED.** Largest and best doubles.

(1321) Mixed. Pkt., 20c. Oz., \$4.00. (1330) Carnelia. Crimson red. (1332) Peach Blossom. Pink. (1334) Whirlwind. White. Each—Pkt., 25c. Oz., \$5.00.

EXTRA EARLY MAMMOTH FLOWERING SINGLE. Largest of all Cosmos.

(1322) Giant Mixed. Pkt., 10c. Oz., 75c. (1324) Giant Crimson. (1326) Giant Pink. (1328) Giant White. Each—Pkt., 10c. Oz., 75c.

(1325) Yellow Cosmos. *Bidens Humulus*, 2 feet high, bushy; covered. Pkt., 10c. Oz., 75c.

HASTINGS' SUPERB DAHLIAS

See Dahlia Roots on Page 23. Semi-hardy perennial; grown readily from seed. These seeds are saved from the finest specimen plants in cultivation.

(1360) **DOUBLE MIXED.** All colors of double flowers. Packet, 10c. Oz., \$3.00.

(1362) **SUPERB DOUBLE MIXED.** From finest named varieties. Packet, 15c. Oz., \$3.50.

(1364) **CACTUS DAHLIAS MIXED.** Pointed or quilled petals. Packet, 15c. Oz., \$3.50.

(1366) **SINGLE MIXED.** From named single varieties. Early. Packet, 10c. Oz., 75c.

DAISY—DOUBLE ENGLISH AND SHASTA

Hardy perennials that last for years and should be in every flower garden.

(1380) **DOUBLE ENGLISH-BELLIS PERENNIS.** True English Daisy, 6 to 10 inches high, with small fully double white flowers. Pink and white mixed. Packet, 10c. Oz., \$4.00.

(1384) **SHASTA DAISY.** See picture. 2 to 2½ feet high; flowers much larger than common daisies. Alaska has broad, white, overlapping petals. Packet, 10c. Oz., \$3.00.

DIANTHUS OR GARDEN PINKS

Our famous Garden Pinks add delight to thousands of homes. They are extremely popular and we offer you the very finest varieties that can be grown. They are well adapted for bedding, borders and for cut flowers. They are very similar to Carnations but with more varied colors; grow about 1 foot high with flowers about 2 inches across. Single and double blooms.

(1400) **HASTINGS' SUPERB MIXED.** All colors and varieties. Packet, 10c. Oz., \$1.00.

GH
©GIANT PINK
COSMOSGH
©

SHASTA DAISY

GH
©

DOUBLE DAHLIA

GH
©

CALLIOPSIS

GH
©DOUBLE
CARNATIONGH
©CENTAUREA
BACHELOR'S BUTTON OR
CORNFLOWERGH
©HASTINGS'
SUPRE MIXED DIANTHUS

HELICHRYSUM STRAW FLOWER

Beautiful wax or straw-like everlasting flowers. Cut with long stems when blooms are one-third open, strip off foliage and let dry. When thus 'cured' they last for months. Very easily grown; plants 2 1/2 feet high with brilliant flowers of white, pink, yellow and red. Hardy annual.

(1490) **HELICHRYSUM**. Mixed colors. Packet, 10c. 3 Pkts., 25c.

HELIOTROPE

Semi-hardy perennial, a fine garden favorite always in great demand. Very fragrant flower growing 18 to 24 inches high; suitable for beds and borders. Usually stands Southern winters with slight protection. Seed saved from large flowering, fragrant varieties; sure to please you.

(1500) **HELIOTROPE**. All shades of dark blue, light blue, white and rose pink. Packet, 10c. Oz., \$1.00.

DOUBLE HOLLYHOCKS

A perennial that is greatly improved over the old type but distinctive of the old-fashioned garden and no home flower garden can pass without them. Plants 5 to 8 feet tall; beautiful long spikes crowded with tissue-like creped balls of bloom.

(1510) **DOUBLE MIXED**. All colors. Packet, 10c. Oz., \$2.00.

(1512) **DOUBLE CRIMSON**. (1513) **Double Maroon**. (1514) **Double Salmon-Rose**. (1515) **Double Sulphur Yellow**. (1516) **Double Pure Pink**. All the finest double Chater varieties; simply beautiful. Each —Packet, 10c. Oz. \$2.00.

KOCHIA OR BURNING BUSH

Easily grown annual, this Mexican Burning Bush or Summer Cypress. Of compact growth, finely cut foliage of a rich green color until approach of cooler weather towards fall, when it turns deep red throughout. Plants form a cypress-like hedge of symmetrical form, about 3 feet high and most attractive.

(1536) **KOCHIA**. Splendid and novel plant. Packet, 10c. 3 Pkts., 25c. Oz., 50c.

LARKSPUR—DELPHINIUM

Long clustered spikes of beautiful flowers for cut-flowers, bedding or border displays. The Delphiniums, perennial Larkspurs, last for years and do fine in shrubbery, borders or beds.

(1542) **EMPEROR LARKSPUR**. Mixed colors; dwarf, branching, double stock flowered, 2 feet high; thickly set with flowers and popular all over America. Packet, 10c. Oz., 50c.

(1544) **TALL DOUBLE MIXED LARKSPUR**. Tall, branching double, stock flowered. Valuable for their exquisite shades of blue, rose, violet, pink, lilac and white. Packet, 10c. Oz., 50c.

(1543) **TALL SKY-BLUE LARKSPUR**. Double stock flowered; exquisite and most popular flower color of today. Plant a few at least. Packet, 10c. Oz., \$1.00.

(1541) **DELPHINIUM XXX HYBRIDS**. Newest and largest flowering hybrids and varieties in existence. Flowers are various shades of blue; grow about 5 feet tall. Packet, 15c. Oz., \$3.50.

MOONFLOWERS

Popular in all sections of the South for attractive climbers for shade on porches, trellises and arbors. Plants grow 20 feet high in good soil, branch freely and are covered with very large flowers of white or blue. Annual climber of great merit and attraction.

(1578) **HEAVENLY BLUE**. Very large with reddish purple rays. Packet, 10c. Oz., 75c.

(1580) **WHITE MOONFLOWER**. Immense white, 4 to 5 inches across. Packet, 10c. Oz., 50c.

MORNING GLORIES

The new sorts surpass the ordinary kinds so far they are hardly considered. Large in size with beautiful rich colorings. A real surprise for those accustomed to the old type.

(1570) **BRAZILIAN MORNING GLORY**. Grows 40 to 50 feet high; bright lavender-pink flowers often 5 inches across; gives more shade than a moonflower. Packet, 10c. Oz., 50c.

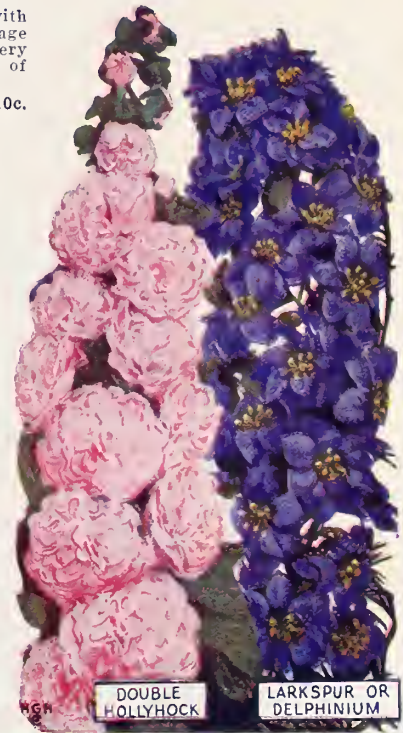
(1573) **JAPANESE MORNING GLORY**. Over 30 shades and colors, some with variegated colored foliage; large flowers. Packet, 10c. Oz., 75c.

(1574) **TALL MORNING GLORY**. (1575) **Dwarf Morning Glory**, 1 foot high. Mixed colors in many beautiful shades in both of these. Each—Packet, 5c. Oz., 50c.



JAPANESE MORNING GLORY

(1573) JAPANESE MORNING GLORIES



DOUBLE HOLLYHOCK

LARKSPUR OR DELPHINIUM



BLUE MOONFLOWER



HELIOTROPE

HGH ©



HELICHRYSUM

HGH ©



KOCHIA OR BURNING BUSH

HGH ©

MARIGOLDS

Hardy annuals that stay in bloom until frost time. Free flowering garden favorites.

(1553) **TALL DOUBLE AFRICAN.** Extra large improved yellow and orange flowers. 15 to 30 inches tall. Packet, 10c. Oz., \$1.00.

(1554) **DWARF FRENCH.** Small highly colored flowers. 6 to 8 inches tall. Packet, 5c. Oz., 75c.

(1555) **TALL FRENCH.** Deep colored small flowers. Packet, 5c. Oz., 50c.

NASTURTIUMS

Everybody's flower for borders, boxes, beds and cut-flowers. Tall varieties for climbing stumps, low fences and flower stands. Many colors.

(1590) **HASTINGS' BUSH or DWARF.** Large flowers of gorgeous colorings. Packet, 5c. Oz., 20c. $\frac{1}{4}$ Lb., 50c. Lb., \$1.50.

(1595) **HASTINGS' TALL MIXED.** All colors; large tall growing varieties. Packet, 5c. Oz., 20c. $\frac{1}{4}$ Lb., 50c. Lb., \$1.50.

HASTINGS' PANSIES

Perhaps the richest flower grown and we have the finest seeds from the finest strains grown in the world today.

(1600) **FINE MIXED.** Common varieties in wide range of colors. Packet, 5c.

(1601) **FRENCH MIXED.** Good mixture for early spring plantings. Packet, 10c.

(1602) **ENGLISH "FACE."** Large flowering, beautiful "Face" Pansies. Packet, 15c.

(1603) **HASTINGS' SUPERB MIXED.** Finest and largest exhibition strains in the world. Exquisite. Packet, 25c. 3 Pkts., 50c.

PETUNIAS

Showy, easily grown, tender perennials.

Free flowering all summer and of rich, beautiful colorings. No garden is complete without them. 18 inches tall; branch freely and grown rapidly.

(1610) **FORMULA MIXTURE.** Solid colors. (1611) **Howards Star.** Striped. See picture. (1618) **General Dodds.** Velvety blood red. Each—Packet, 10c. 3 Pkts., 25c.

(1609) **DE LUXE MIXTURE.** Largest flowers. (1614) **Rosy Morn.** Pink, white throat. (1616) **Balcony White.** (1617) **Balcony Blue.** (1619) **Rose of Heaven.** Each—Pkt., 15c.

ANNUAL PHLOX

Easiest grown of all annuals; plants 1 foot high with large, brilliantly colored flower heads.

(1630) **FINE MIXED.** All colors. (1633) **New Dwarf Mixed.** Each—Packet, 10c.

(1631) **GRANDIFLORA MIXED.** Large flowers in large clusters. Packet, 10c. Oz., \$2.00.

(1632) **CUSPIDATA STAR.** Pointed petals; star shaped. Packet, 10c. Oz., \$2.50.

POPPIES—ESCHSCHOLTZIA

Well known, popular hardy annuals. Eschscholtzia is the California Poppy.

(1650) **HASTINGS' SUPERB MIXED.** All colors, single and double, Carnation and Peony flowered. Large, tissue-like blooms in a wide range of brilliant colors. Packet, 10c. Oz., 50c.

(1672) **SHIRLEY MIXED.** Single flowers; all colors. Packet, 10c. Oz., 50c.

(1665) **SHRIMP PINK.** New Peony flowered. Picture on Page 3. Packet, 10c.

(1450) **ESCHSCHOLTZIA, SINGLE MIXED.** Single; yellow, orange, white. Packet, 10c.

(1451) **ESCHSCHOLTZIA, DOUBLE MIXED.** Double; white and yellow. Packet, 10c.

(1455) **ESCHSCHOLTZIA AURANTIACA.** Single, orange. California State flower. Packet, 10c. Oz., 75c.



HGH
©
DOUBLE AFRICAN MARIGOLD



HGH
©
ANNUAL PHLOX



HGH
©
SHIRLEY POPPY



HGH
©
STRIPED PETUNIAS



HGH
©
ESCHSCHOLTZIA AURANTIACA
CALIFORNIA POPPY



HGH
©
(1590) SPECIAL MIXED NASTURTIUMS



HGH
©
HASTINGS' SUPERB PANSY



(1710) HASTINGS' UNEXCELLED SWEET PEAS

SWEET PEAS

Hastings' Sweet Peas are unsurpassed. We have the finest varieties in cultivation and our perfectly balanced color mixtures are the best in the land. Write for General Catalog for separate varieties.

- (1710) GRANDIFLORA MIXED. All colors of common type. Packet, 5c. Oz., 15c. ¼ Lb., 50c. Lb., \$1.50.
- (1720) SPENCER'S MIXED. Largest flowering; wavy petals. Packet, 10c. Oz., 25c. ¼ Lb., 75c. Lb., \$2.50.
- (1765) EARLY FLOWERING MIXED. Newest type; Spencer selections. Packet, 10c. Oz., 40c. Lb., \$1.00.

SALVIA—SCARLET SAGE

Free flowering annual with large spikes in a blaze of scarlet for great display in beds, borders and boxes. 2 to 4 feet high; delights in sunny locations; blooms until frost time.

- (1691) SALVIA SPLENDENS. Universally popular. Packet, 10c. 3 Pkts., 25c. Oz., \$5.00.

SCABIOSA—PIN CUSHION

Sweet Scabious or Mourning Bride. Hardy annual; 2 feet high; double flowers, 2 inches across. Richly colored fragrant blossoms on long stems. Free flowering.

- (1700) SCABIOSA, MIXED. All colors. (1701) Azure Fairy. Blue. (1702) Flesh Pink. (1703) Cherry Red. (1704) Sulphur Yellow. (1705) Snowball. Pure white. Each—Packet, 10c. Oz., 75c.

JAPANESE SUNFLOWER

Beautiful, fully double, large Chrysanthemum Flowered Sunflower. Flowers profusely, solid balls of golden yellow, 4 to 6 inches across. Petals as finely cut and fringed as a Chrysanthemum. Gorgeous display annual; 4 to 6 ft. high.

- (1694) JAPANESE SUNFLOWER. Double Golden Yellow. Packet, 10c. Oz., 75c.

MAMMOTH VERBENA

Free flowering, semi-hardy perennial of low, spreading growth. Fine for beds, boxes and edgings. Usually treated as an annual. Hastings' Improved large clustered strains are the finest grown.

- (1781) HYBRIDS, MIXED. All colors. Packet, 10c. Oz., \$1.50.
- (1782) MAMMOTH MIXED. Finest grown, Packet, 15c. Oz., \$3.00.

VINCA—PERIWINKLE

(1796) Very free flowering bedding tender perennial to treat as an annual. Luxuriant foliage, single flowers of white and rose colorings. For pots, boxes, borders, beds. Packet, 10c. Oz., \$3.00.

HASTINGS' MONSTER ZINNIAS

Bloom continuously until killed by frost. Grand bedding displays and borders. Our new Monster Zinnias create a sensation wherever they are seen. No garden should be without these wonderful strains.

- (1810) TALL DOUBLE MIXED. All colors; small flowers. Packet, 10c. Oz., 75c.
- (1814) HALF DWARF DOUBLE MIXED. All colors. Packet, 10c. Oz., \$1.50.
- (1812) HASTINGS' MONSTER MIXED. Largest improved strain. Pkt., 10c. Oz., \$1.50.
- (1820) MONSTER CRIMSON. Red. (1822) Monster Pink. (1824) Monster Purple. (1826) Monster Scarlet. (1828) Monster Yellow. (1830) Monster White. Each—Packet, 15c. 2 Pkts., 25c. Oz., \$2.00.



SALVIA or SCARLET SAGE

HGH ©



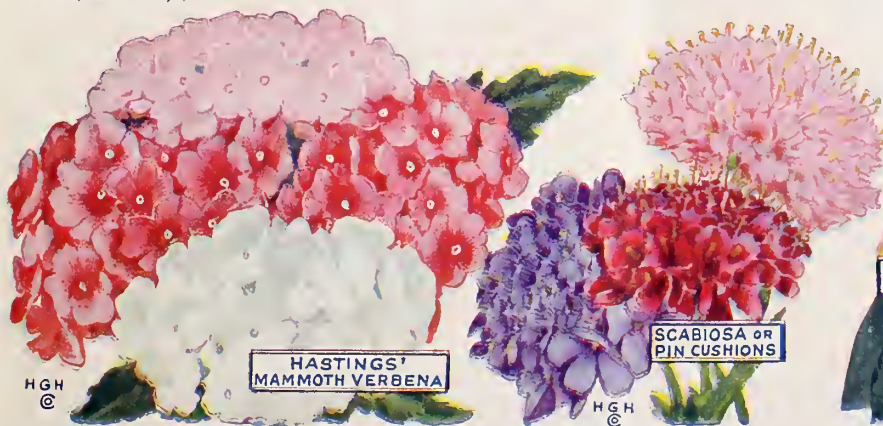
VINCA or PERIWINKLE

HGH ©



HASTINGS' MONSTER ZINNIA

HGH ©



HASTINGS' MAMMOTH VERBENA

HGH ©

HGH ©

SCABIOSA or PIN CUSHIONS



JAPANESE SUNFLOWER

HGH ©



ANGELUS

CRIMSON QUEEN

JENNIE GUILLEMOT

MY MARYLAND

WELLESLEY

AMELIA GUDE

GRUSS AN TEPLITZ

LADY PLYMOUTH

ETOILE DE LYON

CAROLINE TESTOUT

EDEL

GEN. MAC ARTHUR

1c Paid
 Atlanta, Ga.
 Permit No. 30

Postmaster—
 If unable to deliver kindly hand to some
 one interested in gardening. Thank you.

POSTPAID \$2.00 ONLY—NTS

D N SHOEMAKER
 U S DEP OF AGRICULTURE
 WASHINGTON D C

THESE 12 EVERBL

H.G.H.