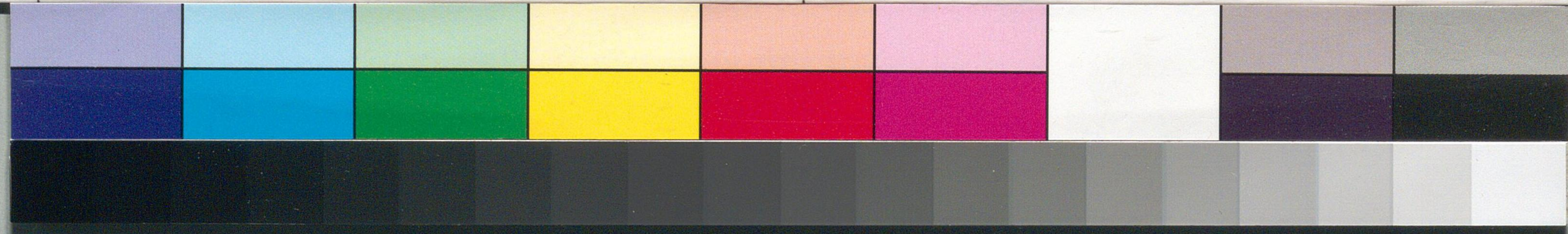


Handwritten Japanese text on a vertical strip of aged paper. The characters are written in a cursive style (sōsho). The text is arranged vertically, starting with a large character at the top, followed by several smaller characters and a signature-like mark on the right side. The paper shows signs of age, including creases and discoloration.





147-12

上書

平是為定也及之無請也

諸君之也如之也

見之也

長子也

深也

深也

深也

元治元年六月七日

松本正平



水

本

張