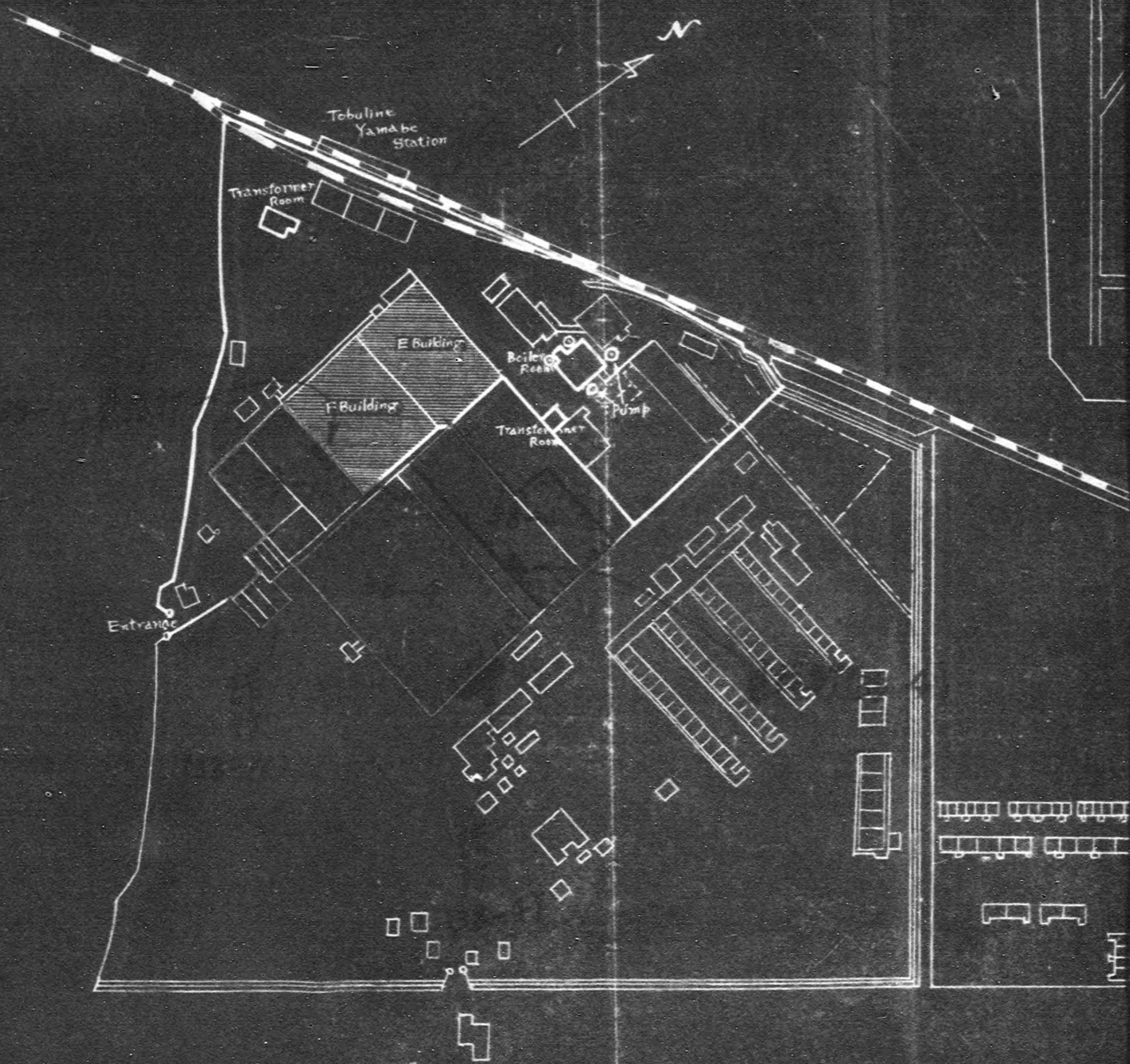
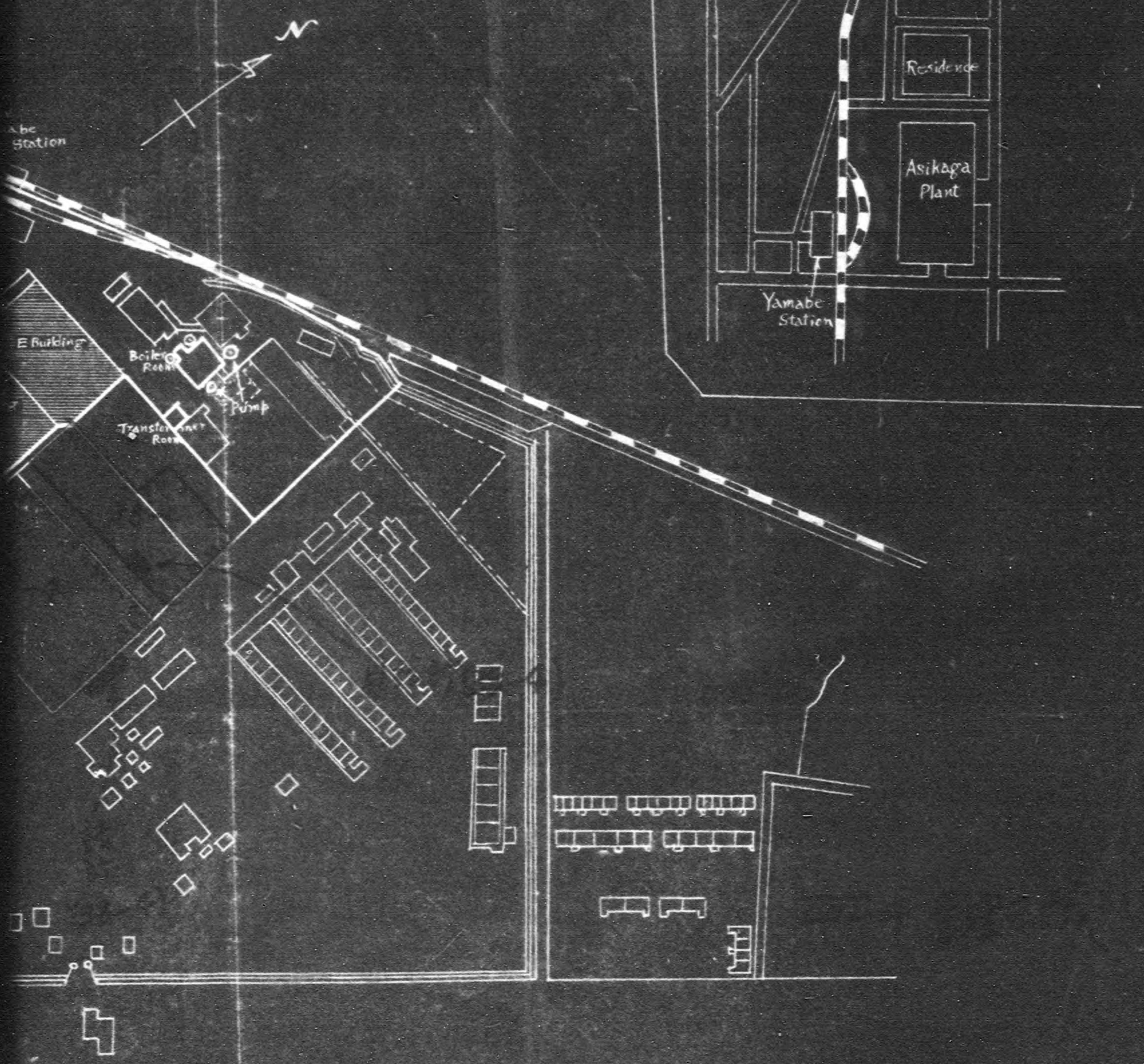


John S. ...

Arrangement Map of Ashikaga Plant (Scale 1/2400)



Asikaga Plant
Plant Map of Ashikaga Plant (Scale 1/2400)



13. Code No. 38-15: Sakuyama Plant, Dai-Nippon Koku K.K.
(Japan Aircraft Manufacturing Plant)

(a) No. of guards paid from reparations fund as of thirty days after the date of this memorandum.

4 (4) Figure in bracket shows the number of guards authorized by CPC.

(b) No. of guards paid by operating plant funds as of thirty days after the date of this memorandum. 2

(c) No. of custodial personnel paid from reparations funds as of 1 April 1950. 4

(d) No. of custodial personnel paid by operating plant funds as of 1 April 1950. 2

a. Total number of items mentioned, machine, tools and equipment.

Manufacturing machine: 30 ea.

Other equipment: 27 "

Total: 57 ea

b. Total point value: 2,470

c. Total floor space: 64.4 tsubo

d. Nature and value of equipment.

The machines are for common use. They have ordinary value.

e. Number, disposition, construction and condition of buildings, housing, reparation equipment.

Number of building: 1

Structure: Built with galvanized iron plates.

Status quo: Opened at the east side of the building.

f. Size and characteristics of plant area, nature of protective inclosure.

Size: 64.4 tsubo

Protection: Protected by galvanized iron plates.

g. Existence of firms, institutions or installations, adjacent to the plant which constitute a fire hazard.

There exists a lumber mill in the neighborhood.

h. Undersirable social condition.

None

i. Number of guard posts and required number of relief guards.

Guard post: 1

Required number of relief guards: 1 *total 4*

j. Percentage of idle machines: 100%

k. Plant layout showing disposition of buildings, reparation storage and guard posts.

See separate map.

大日本航空株式会社佐久山工場
賠償工場建物配置圖



38-15

便所

洗車場

警備員事務所

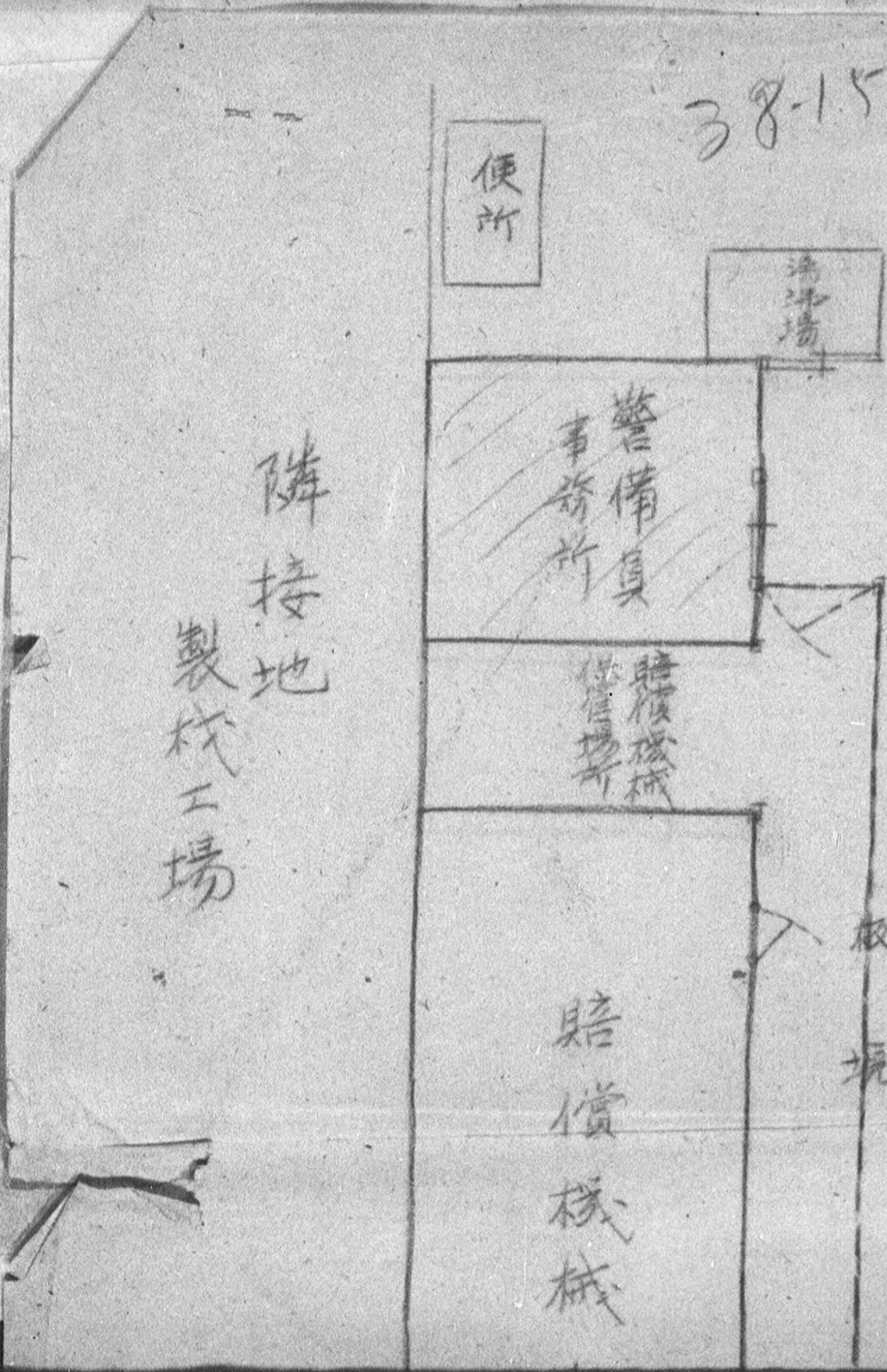
賠償機修場

板垣

賠償機

隣接地

製材工場



文山場

連圖

板境



賠償機械保管場所

隣接建物物置

指定外機械置場

場

(小) (川)

8. Code No. 38-17, Pine Sewing Machine Mfg. Co.,
950, Shimo-Hiraide, Hiraishi-mura, Kawachi-gun, Tochigi-ken

(a) No. of guards paid from reparations fund as of thirty days after the date of this memorandum.
0

(b) No. of guards paid by operating plant funds as of thirty days after the date of this memorandum.
14

(c) No. of custodial personnel paid from reparations funds as of 1 April 1950.
1

(d) No. of custodial personnel paid by operating plant funds as of 1 April 1950.
16

a. Total number of items mentioned, machine, tools and equipment.

	<u>Under operation</u>	<u>Not under operation</u>	<u>Total</u>
Manufacturing machine	137	138	275
Electric machine	63	10	73
Industrial machine	36	13	49
Miscellaneous machine	10	5	15
Total	246	166	412

b. Total point value: 16,624.65

c. Total floor space: 6,627 tsubo

d. Nature and value of equipment

67% of all the machines are manufacturing machines, out of which 50% is now under operation for manufacturing of the sewing machines. 118 ea of the equipment at the level of no operation will be scrapped down.

e. Number disposition, construction and condition of buildings, housing, reparations equipment.

Number: 19 in good condition.

f. Size and characteristics of plant area, nature of protective inclosure.

Size: 36,600 tsubo

)Total size of the land covers 126,464 tsubo)

Characteristics: It is located at the outskirts of the city and surrounded by farms and forests.

Protection is represented by the earthen fence on which barbed wire-entanglements are extended.

Protection is pretty good, but not complete adequate.

g. Existence of firms, institutions adjacent to the plant which constitute a fire hazard.

None

h. Undesirable social condition.

None

i. Number of guard posts and required number of relief guards.

Guard posts: 3

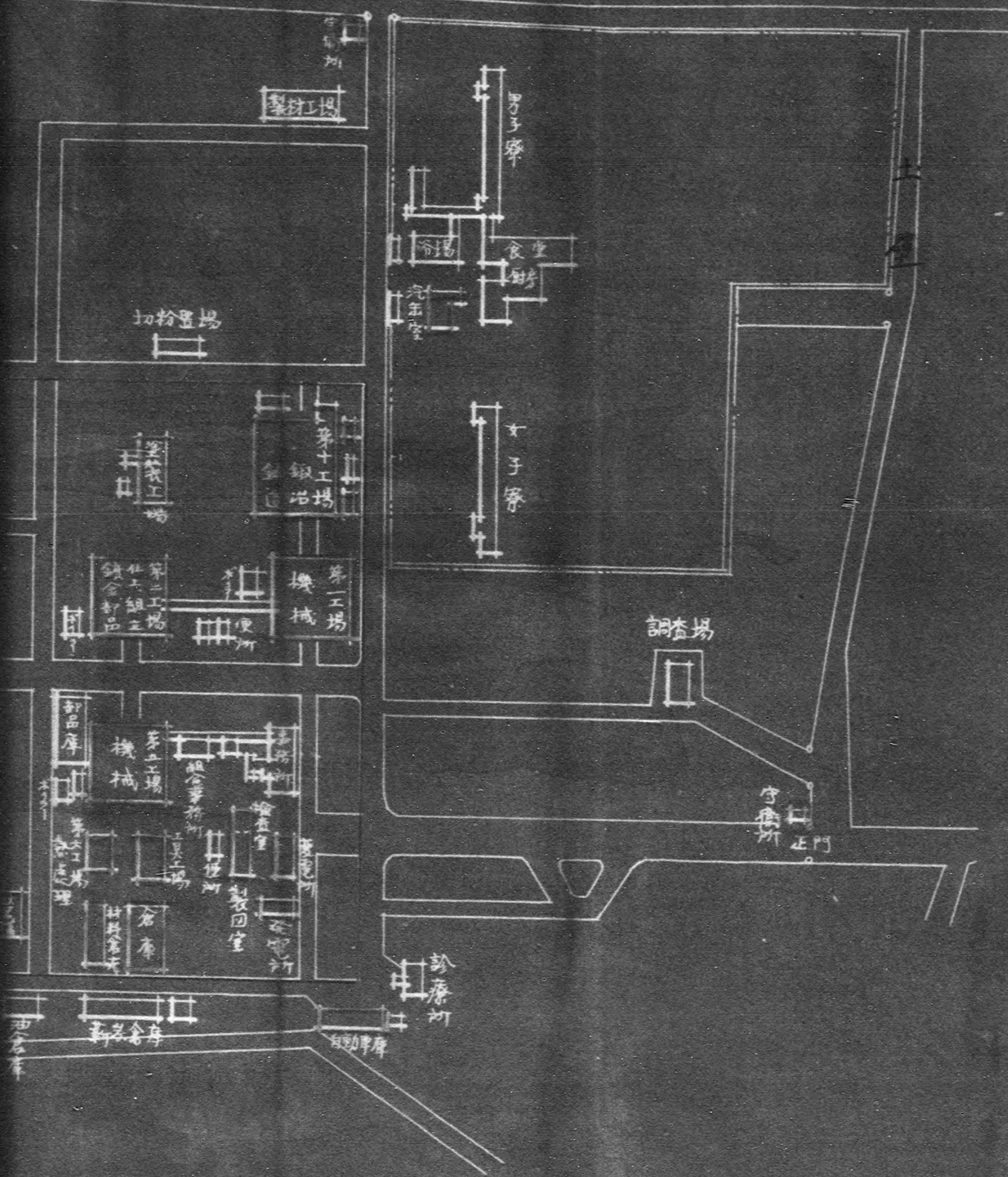
Required number of relief guards: 0

j. Percentage of idle machines: 41%

工場配置圖

パインミシン製造株式会社

縮尺 1/3000



12. Code No. 38-19: Kanto Industrial Co., 608, Suzumenomiya,
Suzumenomiya-mura, Kawachi-gun, Tochigi-ken

(a) No. of guards paid from reparations fund as of thirty days after the date of this memorandum.

20 (20) Figure in bracket represents the number of guards authorized by CPC.

More guards are needed than the standard, because. The ground is big, buildings are many, forest surround the plant and there live not a few jobless or people of crooked thought in the neighborhood.

(b) No. of guards paid by operating plant funds as of thirty days after the date of this memorandum. 0

(c) No. of custodial personnel paid from reparations funds as of 1 April 1950. 22

(d) No. of custodial personnel paid by operating plant funds as of 1 April 1950. 0

a. Total number of items mentioned, machine, tools and equipment.

Manufacturing machine: 2,698 ea.
Miscellaneous machine: 898 "

Total 3,596 ea.

b. Total point value: 89,263

c. Total floor space: 6,990 tsubo

d. Nature and value of equipment.

Except 73 ea of machines which are mostly of American make, all other machines were manufactured during the wartime and cannot be good machines.

e. Number, disposition, construction and condition of buildings, housing, reparation equipment.

Number of buildings: 15

Structure: Plain wooden buildings with the roof of slate-tile. There is much leakage of rain.

f. Size and characteristics of plant area, nature of protective inclosure.

Size: 120,496 tsubo

Custody area is divided into two places across the national high way. In the areas under custody, buildings are located dottedly and visibility is checked by growing trees and grass. At the three sides of east, west and north, barbed wire entanglements are extended on the embankment, but at south side, only the barbed wire entanglements are extended and exposes the protective vulnerability.

g. Existence of firms, institutions or installations adjacent to the plant which constitute a fire hazard.

There exist a match production company (Nissan Norin K.K. Suzumenomiya Branch) to the south.

h. Undesirable social condition.

Majority of the dwellers of the companys quarters are jobless now along with the closure of the plant, which happened in June 1949, and many of them favor the radicale idea.

i. Number of guard posts and required number of relief guards.

Guard posts.	5
Required number of relief guards.	5

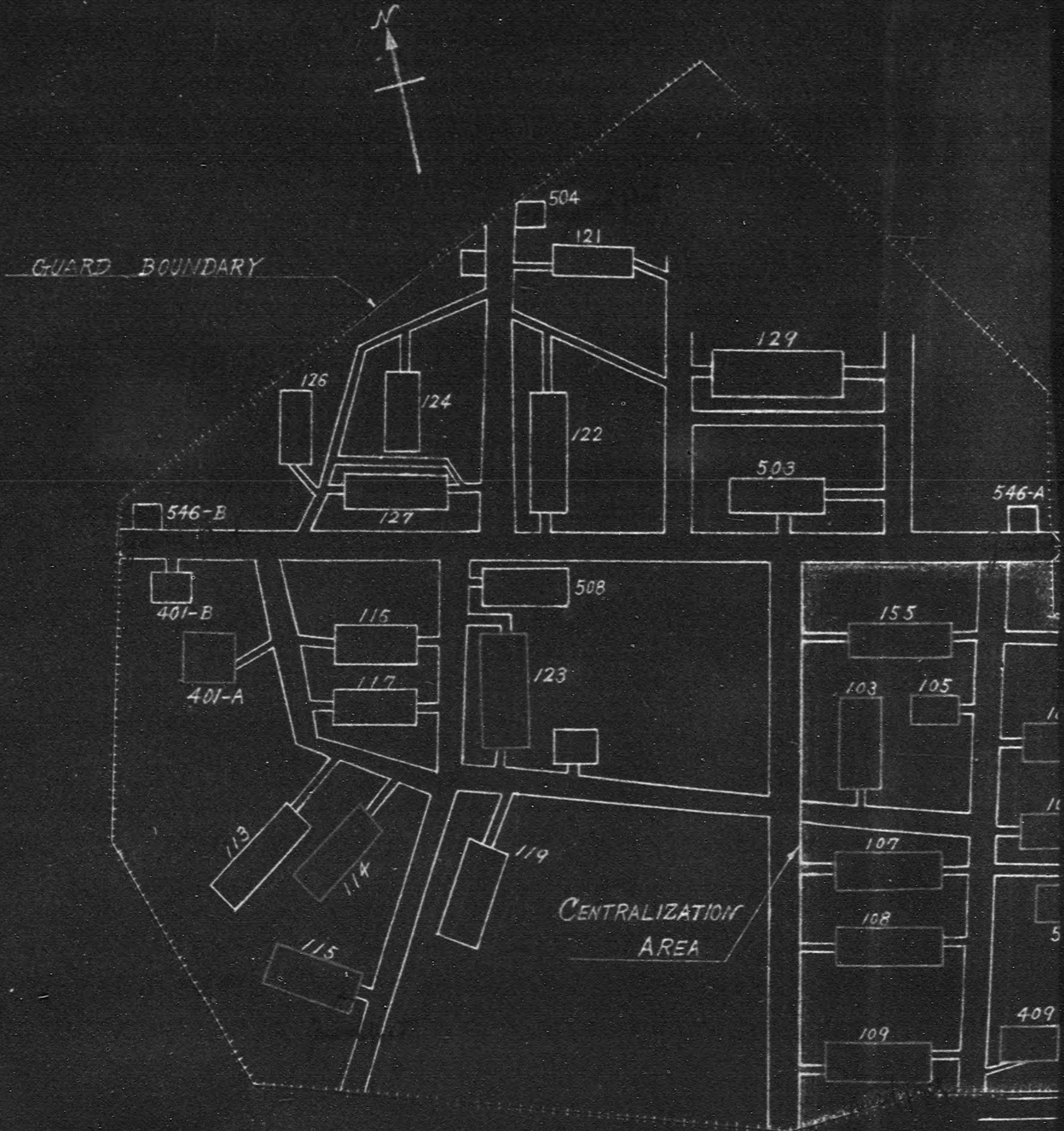
j. Percentage of idle machines: 100%

k. Plant layout showing disposition of buildings, reparation storage and guard posts.

See separate map.

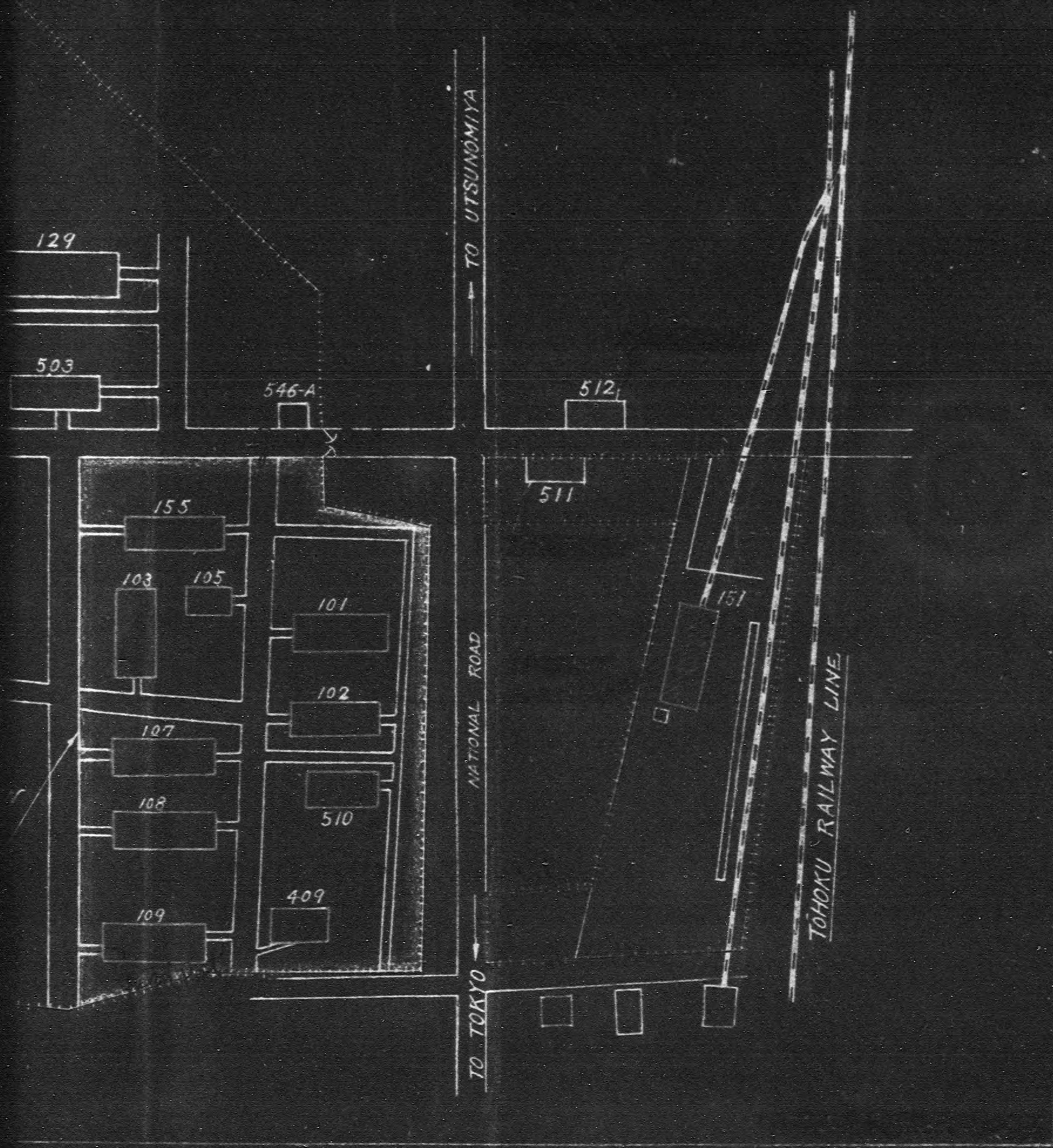
KANTO INDUSTRIAL Co. (3)

No. 608 SUZUMENOMIYA - SUZUMENOMIYAMURA KAWACHI-GU.



RIAL Co. (38-19)

MURA KAWACHI-GUN TOCHIGI-PREFECTURE



11. Code No. 38-20: Kanuma No. 2 Plant, Nippon Zoki K.K.,
393, Shimofudokoro, Kanuma-shi, Tochigi-ken

(a) No. of guards paid from reparations fund as of thirty days after the date of this memorandum.
 2 (2) Figure in bracket represents the number of guards authorized by CPC

(b) No. of guards paid by operating plant funds as of thirty days after the date of this memorandum.
 2

(c) No. of custodial personnel paid from reparations funds as of 1 April 1950.
 4

(d) No. of custodial personnel paid by operating plant funds as of 1 April 1950.
 5

a. Total number of items mentioned, machine, tools and equipment.

Manufacturing machine: 127 ea.
 Equipment: 44 "

Total 171 "

b. Total point value: 9,283

c. Total floor space: 486 tsubo

d. Nature and value of equipment:

Majority of the machines were used during the war time and there are much wears and tears on them. Few of them are adequate enough for operation.

e. Number, disposition construction and condition of buildings, housing, reparation equipment.

Number of buildings: 4

Structure: Plain wooden buildings with the roof of slate-tile.

f. Size and characteristics of plant area, nature of protective inclosure.

Size: 1,878 tsubo

Characteristics: None

Protection. Log fence of 7 feet in height surrounds the plant.

g. Existence of firms, institution or installations adjacent to the plant constitute a fire hazard.

None

h. Undesirable social condition.

None

i. Number of guard posts and required number of relief guards.

Guard posts: 1

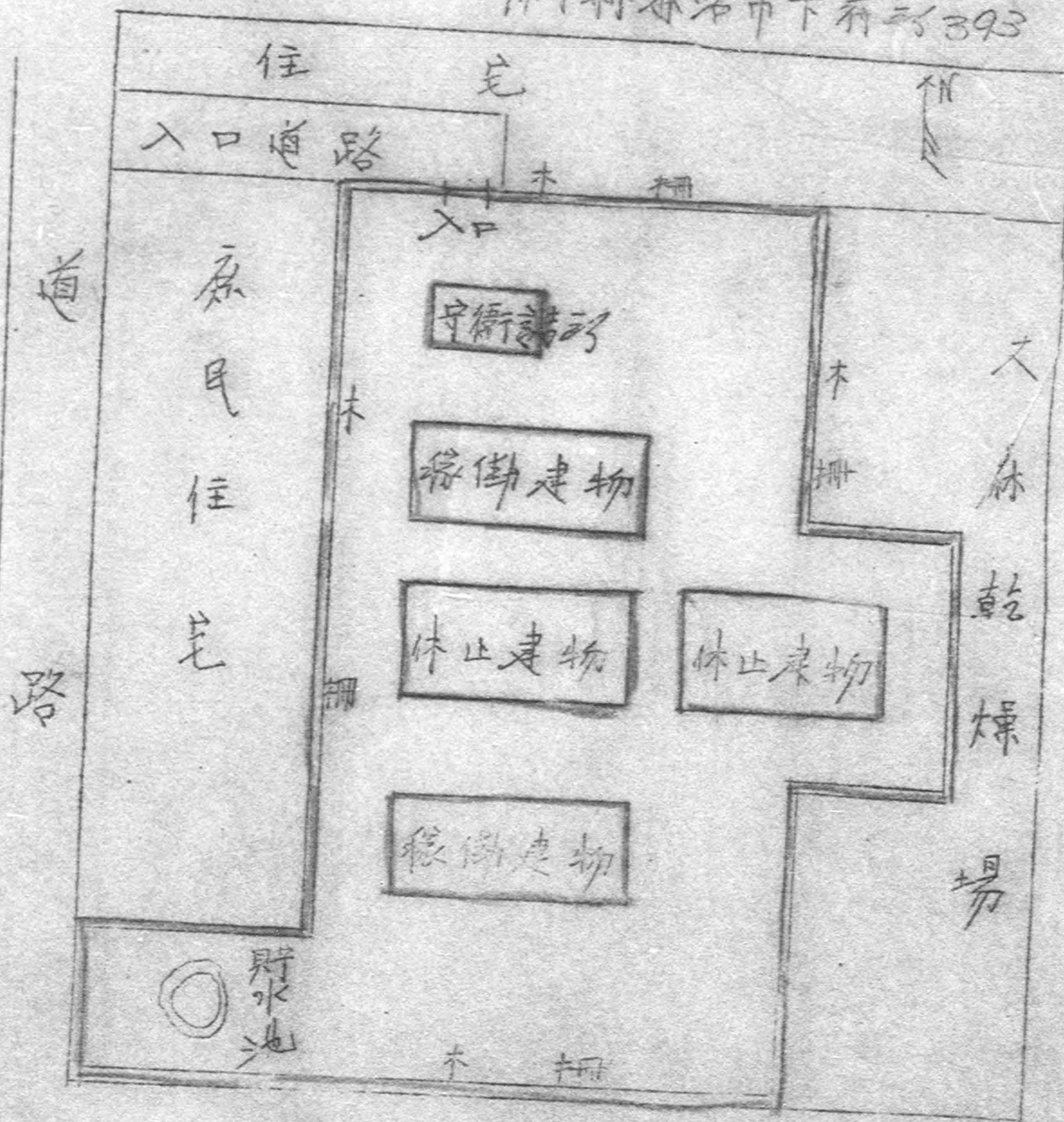
Required number of relief guards: 1

j. Percentage of idle machines: 86%

k. Plant layout showing disposition of buildings, reparation storage and guard posts:

See separate map.

日本造機株式會社
 38-20. 第二工場
 篠木縣沼市下町393



10. Case No. 38-25: Tohigi Plant, Hitachi Manufacturing Co.,
800, Tomita, Toyama-mura, Shimotsuga-gun, Tohigi-ken

(a) No. of guards paid from reparations fund as of thirty days after the date of this memorandum. 0

(b) No. of guards paid by operating plant funds as of thirty days after the date of this memorandum. 20

(c) No. of custodial personnel paid from reparations funds as of 1 April 1950. 1

(d) No. of custodial personnel paid by operating plant funds as of 1 April 1950. 22

a. Total number of items mentioned, machine, tools and equipment.

Number of machines inserted on the inventory: 290

Number of machines put in the registration by virtue of the revaluation: 3,470 (number of machines put in the inventory: 249)

b. Total point value.

Value points registered in the inventory: 23,900

c. Total floor space: 8,390 tsubo

d. Nature and value of equipment.

Major part of our machines is represented by manufacturing machine, industrial machines and electric equipment, efficiency of which is all good from the productive necessity.

e. Number, disposition construction and condition of buildings, housing, reparation equipment.

Number of buildings: 9 excluding the housing which keep custody of EX machines and tools registered on the list of the revaluation.

Structure: Plain wooden buildings with the roof of slate tile.

Status quo: One of the buildings has been shared for storage of idle machines with the space one-third of the building, but other buildings have been in use. The roof of the building for storage of idle machines is decayed at the level where there is much leakage of rain.

f. Size and characteristics of plant area, nature of protective inclosure.

Size: 60,800 tsubo

Characteristics: The plant is located in the plain forest and the area under custody of the whole land, is 60,800 tsubo out of which 370,000 tsubo, is partitioned by pine forest and miscellaneous trees wood in the south and east side and by upland field in the west and north sides.

Protection: Bamboo fence is set up to mark the boundary between the plant and the surroundings.

g. Existence of firms, institutions or installations adjacent to the plant constitute a fire hazard.

None

h. Undersirable social condition.

None

i. Number of guard posts, and required number of relief guards.

Guard posts: 4(in the daytime)
3(at night time)

Required number of relief guards: 20

j. Percentage of idle machines: 50.8%

k. Plant layout showing disposition of buildings, reparations, storage and guard post.

See separate map







000
0000
0000
0000

