

### CHRISTY-LAMPERT

**ONLY DAUGHTER OF MR. AND MRS. JOHN P. LAMPERT WEDS ANALYTICAL CHEMIST**

Miss Gladys Lampert, only daughter of John P. Lampert, Chief of Police of this city, was married Tuesday evening at the present home of her parents in Burbank at 8:30 o'clock to Ralph Christy. The house had been beautifully decorated for the occasion, the bridal party taking their stations in an arbor of greenery and flowers. Attired in a white satin gown and the conventional bridal veil the bride was a most attractive figure as she faced the officiating clergyman, Rev. B. Dudley Snudden. She was attended by Mrs. Smith, sister of the groom, as matron of honor who was gowned in yellow organdie. A little cousin of the groom served as flower girl. Supporting the groom was his old friend and chum, Mr. Squires. The remaining figure in the party was the father of the bride who gave her away.

About forty-five guests were present and immediately following the ceremony the company adjourned to the White Inn, this city, where a wedding supper was served about 10 p. m. The yellow and white color scheme, which dominated the wedding, featured the supper, the tables being centered with yellow flowers, and the nut baskets being of yellow.

A clever get-away was effected through the suggestion that a flashlight picture be taken of the bridal party. While the lights were turned out, bride and groom made their escape and before their absence was discovered they had distanced pursuers.

On returning from their wedding trip they will make their home at Salinas, where one of the Spreckles sugar factories is located. The groom is an analytical chemist and for a time was in the employ of the United States government in Cuba. Of late he has been in the employ of the Spreckles Company at Huntington Beach and is now being transferred to Salinas.

### JOHN GYSIN, SIGN PAINTER, AGAIN AT WORK

Johi Gysin, the sign painter, is back on the job again, minus the lower part of his right leg but full of pluck and vim as ever. For three months he suffered, but he is now in robust health and the best of spirits. He has associated with him in business a sign painter named C. R. Baker, who is said to be an expert and Mr. Gysin has set to work to get all the jobs he and his assistant can attend to. He is still at the old location, 312 East Broadway.

### LITERARY SECTION

#### TOASTS AND CLEVER QUIPS FEATURE LUNCHEON AT HOME OF CURATOR

The Literary Section of the Tuesday Afternoon Club enjoyed its annual luncheon at the home of the curator, Mrs. Charles Hutchinson, Tuesday. Covers were laid for twenty-four, the guests being seated at one long table and four smaller ones on which the Dorothy Perkins pink rose was used in decoration, the color being repeated in nut baskets and place cards. Following a menu of several courses there were toasts and responses. Mrs. Hunt gave the toast "To Our Guests"—meaning the ladies who had assisted the Literary Section in various ways throughout the year. The response to this toast was made by Mrs. Danford, City Librarian. Other toasts were:

Mrs. Tower—"To the Future."  
Mrs. Willisford—"Looking Backward."

Clever place cards, which were the joint product of the curator and Mrs. Hayward, furnished considerable entertainment. They were in the form of little booklets, the inside pages bearing quotations from celebrated writers, the cover a conundrum the answer indicating the name of the hostess. For example, the conundrum on Mrs. Willisford's card was "What is William's automobile?" Mrs. Hayward's card was marked: "Toward's the barley." After the ladies had been seated the quotations were read. Following the luncheon and toasts was a program of music and literary games. While the hostess was absent from the room the Section voted her into the curator's chair in spite of the fact that she had declined to be a candidate. She has not consented yet, but her associates are hoping she will.

### BICYCLE THIEF CAUGHT

**BOY PROBATIONER FROM JUVENILE HALL CONFESSES TO SEVERAL ROBBERIES**

Yesterday while Acting Chief of Police Stanley and Officer Collins were in Wm. Pfeiffer's bicycle shop getting a bike fixed a boy came in with a wheel to sell. Chief Stanley suspected something wrong so questioned the boy closely and he finally admitted to having stolen the bicycle. He proved to be Melvin H. Keisler, of 347 Hawthorne. He was released from Juvenile Hall on probation just two weeks ago and in that time had stolen four bicycles in Glendale and one in Los Angeles by his own confession. One bicycle, worth possibly \$60, he had sold, for \$3.50. He was taken into custody at once and three of the bicycles have been recovered already. The fourth will be recovered later. From his confession it appears that the boy began again his career of theft almost immediately after his release from Juvenile Hall. The Glendale authorities, who are working hard to rid the city of crime, do not take it well that boys such as this one, and also two Glendale lads who were sent to Juvenile Hall for confessed thieving, were released on what seems to them insufficient grounds and in one case only a few days after being sent there.

In this connection Judge Lowe holds that every business man or firm in Glendale should refuse to buy from any stranger a second-hand article or from any juvenile, whether stranger or not, any article without first consulting with the parents or guardian of such juvenile.

### BALDRIDGE-MILLS

**SISTER OF MERVYN MILLS AND MRS. LOU KERRI WEDS HOLLYWOOD MAN**

A quiet but very pretty wedding was celebrated at 230 South Louise street, this city, Tuesday, at high noon, when Miss Ivy Mills was united to Claud Baldrige of Hollywood. The rite which made the twain one was staged in front of a lovely bank of ferns and pink carnations. Rev. Julius Soper officiated and Mrs. Lou Kirri, sister of the bride, acted as matron of honor. The groom was attended by his brother, Elbert F. Baldrige, as best man. The central figure was, of course, the bride, gowned in white satin and carrying a beautiful shower bouquet of white rosebuds and maidenhair fern. Mrs. Kirri wearing yellow and white crepe de chine.

The pink and white color scheme which featured floral decorations was also carried out in the appointments of the wedding breakfast which followed the ceremony. Two handsome wedding cakes held places of honor at the feast, the bride's cake being elaborately frosted with dove decorations.

Guests were D. F. Mills, Mervyn and George Mills, brothers of the bride, Mrs. D. F. Mills, her children Jean and June Mills, Mrs. Lou Kirri. (Continued on Page 2)

### CARNATION REBEKAH LODGE

Carnation Rebekah Lodge met in regular session last night in I. O. O. F. Hall. During the business session new officers for the coming six months were elected and are: Noble Grand, Mrs. Hortense Lund; Vice-Grand, Mrs. Edna Scovern; Recording Secretary, Mrs. Anna Current. Five new candidates are to be initiated at the next meeting, a team from Edelweiss coming out to put on the work. While this order is essentially social yet it is benevolent, too, for it maintains an orphanage at Gilroy, Cal., containing 68 children and is a most worthy institution where children receive the best training possible.

### IT'S UP TO YOU

The Bank of Glendale is handing out to its patrons a little booklet, "Are You Shaking Up or Rattling Down?" by Ralph Parlette. This little story is taken from Mr. Parlette's book, "The University of Hard Knocks," and it's about a lot of big nuts and little beans. Like all of his stories and lectures it is very entertaining as well as inspirational and is causing a lot of comment from those who have read it. It can't be described unless we reprint the whole story and that wouldn't be fair. Go to the bank and ask for one. You'll treasure it always.

### REPUBLICAN NATIONAL DELEGATES

**REGULARS FROM LOUISIANA SEATED; TWO IRREGULARS FROM MINNESOTA ACCEPTED**

(Special Service to Glendale Evening News)  
CHICAGO, June 2.—By unanimous vote the Republican National Committee today seated twelve regular delegates from Louisiana. This is apparently a victory for Governor Lowden as it is understood the regular delegates were for Lowden while the contestants were understood to be in favor of Wood.

The first division in the Republican National Committee on the seating of contestant delegates came when the committee split in the seating of two delegates from Minnesota and voted 36 to 12 to seat two irregular delegates who were understood to be supporters of Hiram Johnson. The defeated delegates are instructed for General Wood.

### ILLNESS OF PROVISIONAL PRESIDENT

**DE LA HUERTA OF MEXICO MAY HAVE TO UNDERGO AN OPERATION FOR APPENDICITIS**

(Special Service to Glendale Evening News)  
MEXICO CITY, June 2.—Provisional President De la Huerta is more critically ill than first reports indicated, it was generally believed here today. Following his inauguration yesterday the new president was scheduled to go to the presidential palace for a reception but was physically unable. An operation for appendicitis may be performed Thursday, it was said today on good authority.

Beginning at 10 o'clock this morning 20,000 troops marched through the streets as evidence of their support of the new president. De la Huerta became Provisional President of Mexico in less than thirty seconds yesterday afternoon. It took no longer than the time required for him to take the oath of office promising to abide by the constitution. Owing to his illness, De la Huerta did not make an inaugural speech.

### PRESIDENTIAL PRESSURE ON DELAWARE

**WILSON TELEGRAPHS THREE ASSEMBLYMEN TO VOTE FOR WOMAN'S SUFFRAGE AMENDMENT**

(Special Service to Glendale Evening News)  
WASHINGTON, June 2.—President Wilson today telegraphed three Democratic Delaware assemblymen urging them to vote for the federal women's suffrage amendment. The three assemblymen are: J. J. Muldena, J. A. Mulrine, and F. E. McNabb. They had previously voted against the amendment.

The Delaware assembly is reported to be ready to take final action on the suffrage amendment today. If it approves, Delaware will be the 36th state to ratify the amendment since the state senate has already acted favorably. Ratification by 36 states would allow women to vote in the next presidential election.

### AUDACIOUS SINN FEINERS

**RAID KINGS' INN, DUBLIN, IN 10 MINUTES AND VANISH BEFORE REINFORCEMENTS ARRIVE**

(Special Service to Glendale Evening News)  
LONDON, June 2.—The audacity with which the Sinn Feiners carried out their raid yesterday on Kings' Inn, Dublin, amazed London press today. A soldier guard quartered in the inn was taken by surprise and was powerless against the one hundred men who completed their raid in less than ten minutes and vanished before reinforcements could arrive. The affair is expected to arouse lively debate in Parliament today.

The latest destructions include the military barracks at Culleybackey, Leenane, and Killebenny. The raiders also attacked the court house at Druminin, and the tax office at Castletown, as well as five coast guard stations and the Queenstown naval station.

### JOHNSON GOES TO CONVENTION

**STATES HIS REASON FOR ATTENDING ON THE EVE OF SPEECHES IN CLEVELAND**

(Special Service to Glendale Evening News)  
CLEVELAND, June 2.—Senator Hiram Johnson's principal reason for going to the Republican National Convention in Chicago is to see that the convention "does not pussyfoot or skulk on the league of nations," he said on his arrival here today for two addresses.

"I shall insist that the convention take a manly, courageous stand in opposition to the league," he said, "I am entirely satisfied with my chances at Chicago but I will not prognosticate. I polled 1,250,000 votes in the primaries, far more than my nearest opponent. That is no inconsiderable amount of the total Republican vote in the country and is an expression of who the people want."

### ARMY APPROPRIATION BILL

(Special Service to Glendale Evening News)  
WASHINGTON, June 2.—The army appropriation bill carrying \$395,000,000 was passed by the Senate and sent to the White House today.

### SMITH-HOBBS

**DAUGHTER OF MR. AND MRS. JOHN HOBBS WEDS WAYNE H. SMITH**

One of the prettiest weddings which has been witnessed in Glendale in some time was celebrated at 4:30 o'clock Tuesday afternoon at the home of Mr. and Mrs. John Hobbs, on South Central avenue, when their daughter, Miss Dorothy Hobbs, became the bride of Wayne Smith, son of Mr. and Mrs. De Los H. Smith of this city. The ceremony took place on the front lawn of the Hobbs home in the shade of the sheltering palm planted by Mr. Hobbs when he established his home there, years ago. Pepper boughs and potted palms screened the scene from the gaze of any curious passers-by and the green velvet carpet laid for the bridal party from the porch to their station beneath the palm tree was foped off by asparagus plumosus with knots of baby gladioli and delphinium at the supporting posts. At the end of the floral aisle were green jardinières filled with gladioli and delphinium, and there Rev. Clifford Cole, who officiated, awaited the bridal party.

A beautiful bride was Dorothy Hobbs in her gown of princess lace over white satin and picture hat to match. It was entirely her own design and the handiwork of her own clever fingers which are the despair and envy of her friends. A wonderful bouquet of bride roses, sweet peas and lilies of the valley constituted her flowers. Attending her as bridesmaid was her cousin, Miss Mary Logan, who was gowned in orchid taffeta and lace and who carried a bouquet of white roses.

### SOLE SUPPORT OF FAMILY OF 15 UP FOR SPEEDING

Judge Lowe had an unusual case in his court last Friday. A young man by the name of Trebold, living in Los Angeles and driving a machine for a business house there, was arrested for going at a rate exceeding 30 miles an hour in the 20-mile zone. He told the judge he was the eldest of 13 children and his father was an incompetent, so he had 15 people depending on his earnings of \$100 a month. The judge verified these statements and then decided to temper justice with mercy, so assessed a \$10 fine, but suspended it on promise of good behavior. The young man faithfully promised that he would never again knowingly violate the speed laws.

### GREAT ANNEXATION PLANS BY L. A.

The latest ambitious dream of the Los Angeles annexationists is a project, all laid out by maps and figures, of a great city extending from the sea to the Sierra Madre Mountain range and from San Gabriel to San Fernando. The coast line is to extend from Topanga Canyon to Alamitos Bay, where the Orange county line meets the sea. All of the coast cities from Santa Monica to and including Long Beach, also San Gabriel, Alhambra, Pasadena, Glendale, Burbank, San Fernando, Vernon, Huntington Park, and so on, are to be swallowed up, giving the great city an area of 1000 square miles, three times the size of New York City and a population of 3,000,000. All this is to come about by 1945, is the plan.

### HONDURAS BOY

**MR. AND MRS. C. E. PECK WELCOME TO THEIR HOME SPANISH-SPEAKING GRANDSON**

Mr. and Mrs. C. E. Peck of 114 South Louise welcomed Monday a grandson, Frederick Peck, from Honduras. He has come to make his home with them for the coming year and perfect his knowledge of English. In the southern republic where he was born and where he has lived thus far, he has heard nothing but Spanish. He has secured a tutor in English and expects to master his father's native tongue sufficiently to be able to enter school here in the fall. He is not behind in his school courses, but has had them all in Spanish.

Miss Rosa Peck, daughter of C. E. Peck of this city, left yesterday to accompany her aunt, Mrs. Jones, back to her home in Detroit. The accident which Mrs. Jones suffered recently when her automobile collided with another machine when she was en route from Fullerton to Pasadena, made it rather necessary she should not make the home journey alone, and Miss Peck was glad to go. She will be gone for several weeks.

### COMMERCIAL STREET

**THIS WILL BE NAME OF NEW ROADWAY FROM SAN FERNANDO ROAD TO BROADWAY**

Faint memories of more than 30 years ago were awakened in the minds of some of Glendale's early residents by the report in the Trustees' proceedings of last week that the new Broadway cut-off, as it has been called, will be named Commercial street. At about the time the little group of houses bordering Glendale avenue on the east became known as Glendale, a new town was projected nearly two miles west, which was to be a deadly rival. It was known as West Glendale and was located along the San Fernando Road at the end of the present Milford street, which was laid out extending east from San Fernando Road 80 feet wide with business lots of 25 feet frontage on the north side of it. A street running north from this one block was known as Commercial street and is there today. In the acute angle made by the junction of Milford and San Fernando Road, and on the south side of the former a two-story brick building was erected by a Mr. Ward of Tropic, which was to house a new bank. There was a large hall upstairs, which was used for assembly.

### A WEEK'S RECORD OF MOTOR TRAFFIC

The city of Glendale is having a daily account made of the number of motor vehicles, tonnage carried by trucks, etc., on the principal streets, in order, for one thing, to test the strain on the roads. Since last Wednesday the number of such vehicles passing the crossing of Los Feliz and San Fernando Roads, in all four directions, was as follows: Wednesday, May 26th—autos 1340, trucks 320, trailers 27; Thursday—autos 1132, trucks 376, trailers 19; Friday—autos 960, trucks 420, trailers 14; Saturday—autos 1300, trucks 493, trailers 14. Monday—autos 1990, trucks 290, trailers 10; Tuesday—autos 1190, trucks 488, trailers 26. In the six days 7912 autos and 2337 trucks passed the point named, a total of 10,349 motor vehicles, or an average of 1725 a day. And in the same time there were 110 trailers. This gives some idea of the travel over Glendale's highways.

### GLENDALE LOSES GAME

**SAN DIEGO WINS CRUCIAL CONTEST BY SCORE OF 5 TO 2**

The Glendale High School baseball team went up against a strong proposition in the final game to decide the interscholastic League championship of Southern California. San Diego players are more mature, have played longer and they wore on their own grounds. The several tight places by first-class game for 5 innings, pulling out of several tight places by splendid playing, notably in the first inning when Joe Cummings nailed a line drive after a long run, then doubled up the runner from 1st base. But later his errors let in two runs and McDonnell's misplays were responsible for two more. San Diego earned only one of their 5 runs and Glendale both of theirs. The San Diego pitcher struck out 17 of his opponents, while Jenkins fanned only 2. The latter walked several of his opponents, also, and this made the contest harder. He allowed only 5 hits, however, one of them a 3-bagger. Glendale made 3 hits, but they netted 8 bases, to 7 for San Diego. Lefty Herman made his usual home run, but it was as first batter up, in the second, so netted only one run. Our boys did better base running than their opponents, having four stolen bases to their credit. It was a hard game to lose, but Glendale High is proud of its team, anyhow, for they have played clean ball all season and won some notable victories.

Glendale's line-up for the game was as follows: Pitcher, Fred Jenkins; catcher, Paul Jenkins; 1st base, Herman; 2d base, Cummings; 3d base, McGillis; shortstop, McDonnell; right field, Wilde; center, Brown; left, McNary.

The Score

	1	2	3	4	5	6	7	8	9
Glendale	0	1	0	1	0	0	0	0	0
San Diego	0	0	1	0	1	0	0	0	2

WEATHER FORECAST: Fair to-night and Thursday. Probably cloudy in the morning.

THE GLENDALE EVENING NEWS

Published Daily Except Sunday

A. T. COWAN - - - - - Publisher and Proprietor
Office of Publication, 304 East Broadway
PHONE GLENDALE 132

Entered as second-class matter Sept. 12, 1913, at the Postoffice at Los Angeles, Cal., under the Act of March 3, 1879.

SUBSCRIPTION RATE—Single Copy, 5 Cents; One Year, \$5.00; Six Months, \$2.75; Three Months, \$1.40; Two Months, \$1.00; One Month, 60c

GLENDALE, CALIFORNIA, WEDNESDAY, JUNE 2, 1920

BALDRIDGE—MILLS

(Continued from Page 1)

sister of the bride, Mr. and Mrs. K. K. Kelly of Los Angeles and their daughter Charlotte, Mrs. Knowlton of Hollywood and son Edson, Miss Peterson and Mr. Fish, also of Hollywood, Mr. and Mrs. Philip Landers of Los Angeles, Mr. and Mrs. Robert Oliver of Glendale, Rev. Julius Soper of Casa Verdugo; Mrs. Edith Gregg and Miss Margaret Blake of Los Angeles.

Miss Blake played before and after the ceremony, and Mrs. Knowlton sang "Loved One" very beautifully.

After the bride had donned her pretty going away gown of brown velvet and picture hat she and the groom were faced with the problem of getting away, but it was successfully accomplished though their automobile was pursued by showers of rice and old shoes. They are spending their honeymoon at St. Catherine's Hotel in Catalina and on their return will take possession of a pleasant apartment they have secured in Hollywood, where their many beautiful wedding gifts will be displayed to advantage. Mr. Baldrige is connected with one of the big film

companies and their home has been chosen with reference to his convenience.

Miss Mills grew to young womanhood in this city, attended high school here and has a large circle of friends who will miss her, but who are glad that her home is so near.

LEAVE FOR COLORADO

Mrs. Jessie G. Wilson, Fred, Billie and Miss Elsie Wilson of 317 North Belmont street, left this morning for Colona, Colorado, where they will spend three or four months visiting relatives. Mrs. Lou Kirri will motor as far as San Francisco with the party where she will visit relatives and friends for the next two or three weeks.

ANNOUNCEMENTS

NOTICE TO THE PUBLIC
The undersigned furniture dealers have agreed to close their stores on Saturday at 12 noon during June, July and August.
Glendale House Furnishing Co.
Glen B. Porter.
B. & M. Furniture Co.
Taylor Bros. Furniture Co.
Glendale Furniture Store.

TIME TABLE
Pasadena-Ocean Park BUS LINE

Hourly service between Glendale and Pasadena and hourly service between Glendale and the beaches. Cars go east 15 minutes after every hour omitting 9:15 a. m. Going west 30 minutes after every hour. Last car reaching Glendale from beaches 9:15 p. m.

COME ON! LET'S GO! ? WHERE ?

To that Christian Endeavor District Raisin Social Friday evening, June 4th at 7:30 in the Glendale Presbyterian Church. Endeavorers of Glendale District are urged to be present and everybody is most cordially invited. County officers will be with us. A good time is assured all who attend. Yes, come on! Let's go!

NOTICE TO CITIZENS

At the regular meeting of the Board of Trustees of the City of Glendale, Thursday evening, June 3, 1920, at 8 o'clock, a public hearing will be given on the question of framing a Charter for the City. Citizens are invited to be present and confer with the Trustees in regard to the subject.
J. C. SHERER, City Clerk.
By order of Board of Trustees.

CLASSIFIED ADS

First Insertion—Minimum charge 30 cents including four lines counting six words to the line. Additional lines 5 cents per line. Subsequent consecutive insertions—5 cents per line. Minimum 15c. Ten cents additional for first insertion if cash does not accompany order.

FOR SALE

REAL ESTATE

FOR SALE—New 6 room modern home, hardwood floors, 3 bedrooms, large garage, lot 50x165 feet. \$6500. Possession in two weeks. New 8 room modern home, sleeping porch, garage, lot 50x150 feet, \$6800. Possession soon. 6 room modern home, garage, lot 50x166 feet, \$5750. Possession now. H. S. Parker, 128 W. Broadway, Glendale.

FOR SALE—5 room modern home, hardwood floors throughout. Immediate possession. Only \$4800. Terms. Also many other good buys. See R. R. Bartlett, with James W. Pearson, 128 N. Brand Blvd.

FOR SALE—Small three room cottage on a 63x137 lot. Garden and trees. Price \$1850, on easy terms. Must sell. Party is going east. It is on 1424 E. California Ave. Phone Glendale 1646-J.

BURBANK

FOR SALE—Best buy in San Fernando Valley.

50 acres close in to Burbank. 15 acre full bearing orchard. Good well; good alfalfa land. Produced \$8000 last year. Price only \$700 per acre. Good terms. You'd better see this.

26 acres alfalfa cutting two tons per acre now. Good 6 room house, plenty of fruit and fine pumping plant. Fine soil and close to school. One of the best buys in the valley. Price \$28,000. Terms.

40 acre dairy, 3-4 to alfalfa. Good improvements. Plenty of water. Equipped for 100 cows. This is a snap for a dairy. You should see this. Price \$30,000. Your own terms.

Chicken ranch in Burbank equipped for 10,000. Brooder for 14,000. Large barn and good house. Now has between 8 and 10 thousand laying hens. Located on 8 acres of land. This is a snap at \$30,000. Good terms.

One acre chicken ranch with 5 room new house (modern). Gas, water and electricity. Close in. Price \$4000. Terms.

W. A. THOMPSON
Burbank, Cal. Phone Burbank 18

FOR SALE—5 room modern bungalow, disappearing bed; garage, variety of fruit. Price \$3850.

6 room modern bungalow. Every convenience, garage, large lot. Price \$4200.

6 room modern bungalow, furnace. Ideal home place, lot 100x150, fruit. Price \$6800. Easy terms.

W. E. MERCER
624 E. Broadway Glendale 2300-R

FOR SALE—New 7 room white plaster house, all conveniences, \$7000. Large lot. 335 Patterson. Phone Glendale 417. Courtesy to agents.

FOR SALE—A well equipped chicken and fruit ranch, about two-thirds of an acre. Close to business center and on car line. 7 room modern house, beautiful location. This is a wonderful buy for anyone who wants a chicken ranch all ready to step in to. Price is right as owner's business takes him elsewhere. Mrs. M. L. Tight, 612 East Broadway, opposite City Hall. Phone Glendale 1657.

FOR SALE—7 room strictly modern with garage and basement. Most beautiful grounds. Fruits and garden. Size 100x150 on corner. Two blocks to car line. A fine buy at \$8000.

H. L. MILLER CO.
Phone 853 109 S. Brand

FOR SALE—New 5 room bungalow, close in, handy to school and church, one block from car line. For particulars inquire of owner on premises, 208 North Jackson.

FOR SALE—5 room modern Swiss Chalet house, 3 blocks from Brand and Broadway. Price \$5500 furnished.

5 room modern bungalow, 150 feet off Brand. Close to stores. Lot 60x150. Price \$4300.

See A. W. Reynolds or G. O. Simmons, 116 South Brand.

FOR SALE—Small private sanitarium doing a good business. For particulars phone Glendale 1646-J.

FOR SALE—6 room house, garage. On one acre of ground. All kinds of fruit and flowers, chicken yards, brooder and feeding houses; 450 laying hens and 250 young chicks goes with the place. One block from car line. \$150 per month net income. Price \$6500.

H. L. MILLER CO.
Phone 853 109 S. Brand

FOR SALE—Must sell at once, 6 room modern, good location, close in, \$4500.

Will exchange 5 room modern bungalow in Santa Barbara for Glendale home.

BERKEBILE
Real Estate 134 N. Brand Blvd.

FOR SALE—Attractive home place of Ella W. Richardson, 525 S. Central Avenue and Riverdale Drive. Fenced. 9 rooms, 2 baths, every convenience. Double garage, fruit. Terms. Inspection by appointment. Phone Glendale 1559-J.

FOR SALE—Nice 5 room bungalow, close in, \$4200. \$300 cash and \$40 a month. We also have a nice list of 5 and 6 room bungalows priced to sell. B. & M. Realty Co., 111 East Broadway. Glendale 249.

FOR SALE—Four room house, \$1800. Hermosa Beach. Will rent for \$20 all winter. L. L. Sampson, 1174 Loma Drive, Hermosa Beach.

FOR SALE—California bungalow, 806 East Harvard. Telephone Glendale 1280-J.

FOR MAPPING and blueprinting, call Glendale 469.

POULTRY AND STOCK

FOR SALE—Thoroughbred Rhode Island Red rooster. 470 W. California Street.

FOR SALE—Splendid Saanen goat 13 months old. Just fresh giving over 3 quarts. 161 N. College View, Eagle Rock.

RABBITS!—Another big slash in prices this week. New Zealand does at \$1.50. Flemish at \$2 and Japanese fur rabbits, \$2.50. We sell for less. Poultry & Pet Stock Exchange, 142 N. Brand Blvd., Glendale.

FOR SALE—A flock of fine Rhode Island Red hens that are laying now. Harrison strain. Also P. R. Phone Glendale 2254. 1143 Elk Avenue.

FOR SALE—Rabbits. New Zealand; 2 does, 1 buck and 8 young half grown. One 6-compartment hutch. Cut price. Call 120 West Elk Avenue, Glendale.

FOR SALE—Two Toggenburg goats. Just fresh. Reasonable. Inquire A. T. McBeth, 320 East Broadway.

FOR SALE—300 White Leghorn hens, 12 to 14 months old. Best of layers. Borzage Ranch, 720 North Louise. Phone Glendale 1265-J.

FOR SALE—Two doe kids, two months old. Also 1 goat, fresh very soon. Moving. Will sell very cheap. Call at 530 W. Harvard.

FOR SALE—10 hens, splendid layers; 9 six-week-old R. I. Red chicks, chicken house, pen, wire, porch rocker and steamer chair. 619 Orange Grove.

MOTOR VEHICLES

FOR SALE—Indian and Cleveland lightweight motorcycles. Apply at 736 S. Glendale Avenue. Phone Glendale 1075.

FOR SALE—Chevrolet cars, new and used. Ready to go. Cash or terms. Chevrolet Agency, 115 East Broadway.

FOR SALE—1 Chevrolet 4-90 touring car in first class shape. \$450. Cash or terms. Inquire after six o'clock. 713 S. Glendale Avenue.

FOR SALE—Late 1919 Ford automobile. Self-starter; excellent running order. Price \$675. 114 N. Brand Blvd.

FOR SALE—1916 Ford touring car. Must sell this week. Phone Glendale 249 or inquire evenings at 1018 E. Harvard Street.

FOR SALE—"490" Chevrolet, 1917. Fine condition throughout. \$450. Kingsley, 108 W. Colorado.

FURNITURE

FOR SALE—Almost new mahogany desk, fiber rug 9x12, handsome porch set of reed furniture. Phone Glendale 538.

FOR SALE—One door bed. Call 121 S. Isabel.

SPECIAL VALUES IN FURNITURE AND RUGS

A ten-floor metropolitan assortment located within easy reach by auto or rail—low overhead expense and factory buying enable us to offer excellent values—careful delivery in our own trucks—plenty of places to park your car nearby and shop in comfort—it will be pleasant and profitable to come—courteous attention—careful service.

PASADENA FURNITURE COMPANY
Raymond and Holly Pasadena

FOR SALE—AT A BARGAIN. WILL SELL THE FIRST \$225 FIVE PIECE BEAUTIFUL OLD IVORY BEDROOM SUITE AT \$150. BEAUTIFULLY DESIGNED. DON'T MISS THIS. DIRECT FROM THE FACTORY. TAYLOR BROS. FURNITURE COMPANY, NOT INCORPORATED. 520 EAST BROADWAY. PHONE GLENDALE 62.

MISCELLANEOUS

FOR SALE—Collapsible reed sulky. \$19 E. Wilson.

FOR SALE—Peaches, apricots and butter, sweetened. In jars. 25 cents each. This week only. 245 Sinclair Ave. Phone 27-W.

FOR SALE—Almost new Edison Diamond Disc phonograph and \$50 worth of records. Cheap for cash. Call evenings. 419 Patterson avenue.

NEW PLUMBING FOR SALE—Tuesday to Saturday. 50 bath tubs, 100 sinks, 100 lavatories, 35 toilets. Crown City Wrecking Co., 442 South Fair Oaks Avenue, Pasadena.

FOR SALE—For a few days, orange honey in five gallon cans at ton rate. F. R. Buchanan, 242 N. Orange St. Phone Glendale 750-M.

FOR RENT

FOR RENT—Four room cottage, 1405 South Glendale Avenue. \$15. Apply 1402 South Glendale Avenue.

FOR RENT—Two large unfurnished rooms at 138 South Isabel. Call after 6 p. m.

FOR RENT—Pleasant furnished room in private family. Conveniently located. Terms reasonable. Call Glendale 447.

FOR RENT—Nicely furnished front room. Reasonable. 1110 E. Broadway.

FOR RENT—Nice furnished room, close in, to lady or gentleman employed. 328 North Brand Boulevard. Phone Glendale 2019-J.

FOR RENT—Furnished apartment. Hot water, laundry trays, pleasant. \$30. Call at 734 East Wilson, Apt. 3.

FOR RENT—Garage for one or two cars. Inquire 327 N. Cedar.

FOR RENT—Nicely furnished room in private home. 114 North Adams.

FOR RENT—Furnished. Beautiful 7 room bungalow. Large ornamental grounds. 601 S. Adams.

FOR RENT—Furnished rooms with board; also sleeping porch. Phone Glendale 327-W. 118 East Garfield Avenue.

WANTED

WANTED—To rent 4 rooms and sleeping porch. Also garage. 1313 S. San Fernando Road.

WANTED—Woman for general housework. 131 South Pacific Avenue, Glendale.

WANTED TO RENT—4 or 5 room unfurnished house with lease. \$30 or \$35. By June 21. Box D-4, Evening News.

WANTED—Painting and tinting by first class painters. Phone Glendale 2254.

WANTED TO RENT—Furnished, 4 or 5 room bungalow with garage, by two adults. Might buy for cash if like it after one year. No children. Garden and fruit would be liked. Price must be right. Call Broadway 666. Ask for Leeds, Room 199, Alhambra Hotel, Los Angeles.

WANTED TO RENT—5 or 6 room unfurnished house in or around Glendale. Phone Wilshire 3115. Mrs. M. V. Wylie.

WANTED TO RENT—By two adults, unfurnished bungalow, 5 or 6 rooms, close to town, by the year. Please address with full details to Edwards, Apt. 20, 910 South Grand View, Los Angeles, Cal.

WANTED TO RENT—Nicely furnished apartment for two. Must be strictly modern with large porch. Phone; plenty of shade. Permanent if satisfactory. Prefer close in and ground floor. Address with full particulars, Room 59, Glendale Sanitarium.

WANTED, HANDY MAN—Good wages paid to handy man who is willing to assist with moving machinery and general work. Two or three weeks' steady employment. Apply Evening News. Phone Glendale 132.

WANTED—Children to board by the month. Excellent care. Terms reasonable. Mrs. A. McCann, 400 Oak Street, Glendale.

WANTED—Experienced salesladies for Saturdays only. H. S. Webb & Company, Brand and Broadway.

WANTED—To rent unfurnished bungalow. Small family. Permanent. Glendale 1267-R.

WANTED—Carpenter to help me build my cabin in Picoima Canyon. Will take about ten days. Wm. E. Pelley, 800 Raleigh Street.

WANTED—A Ford roadster in good condition. Box 89, Evening News.

WANTED—YOUNG MAN WHO KNOWS HOW TO GREASE, OIL AND WASH CARS AND HELP IN SHOP. \$21.50 PER WEEK. APPLY 237 S. BRAND. PHONE GLENDALE 50.

WANTED—Girl or woman. Steady work. Good wages. Apply 113 East Broadway.

WANTED—To rent 4 or 5 room modern furnished bungalow. Would consider buying. Adults. Address R. H. Brandt, 1329 W. Fifth Street, Los Angeles.

WANTED—Barber and cigar business or opening for same. Address Box 132, Glendale Evening News.

WANTED TO BUY—Used Victrola cheap for cash. Phone Tripp, Glendale 132.

WANTED—Furnished house from June 1st to September 1st. Three adults. Mrs. Hollis, Room 15, Central Hotel.

WANTED—Owners of vacant lots to let us build new houses for \$1000 up, complete. Plans and picture shown. Address "H," 2018 South Figueroa Street, Los Angeles.

WANTED—Boys to carry papers. Good pay; no collecting. A good proposition. Apply 100 S. Maryland before noon or after 4:30 p. m.

WANTED—Woman for general housework. Go home nights. Phone Glendale 225-J after 10 a. m.

LOST

LOST—Between Eagle Rock City and Eagle Rock, June 1st, red and black wool scarf. Especially prized because it was knit by owner's mother. \$3 reward. Mrs. H. M. Adams, 6515 Repton St., Los Angeles. (Garvanza.)

ESTRAYED

DOG ESTRAYED—Small Boston Terrier about 6 weeks old. Small white spot on face and on neck. Lame one foot. 1445 Valley View Road. Phone Glendale 804.

FOUND

FOUND—Pair of glasses on Broadway, near Adams, Tuesday evening. Owner may have same by identifying and paying for this ad. News Office.

PROFESSIONAL CARDS

FRANCIS MARION COLLIER, M. D. EYE, EAR, NOSE AND THROAT Glasses Fitted

Suite 2, No. 125 1/2 N. Brand Blvd., just south of Palace Grand Theatre, Glendale, Cal. Hours: 9 a. m. to 12 m. and by appointment. Phone Glendale 1128

DR. MARLENEE

Optometrist—Optician
RELIABILITY—QUALITY—SERVICE
20 YEARS A SPECIALIST
Own Complete Grinding Plant
Phone for appointment—Office 2116-J
Residence 39-J
104 E. BROADWAY, GLENDALE, CAL.

Dr. Frank N. Arnold

DENTIST
Flower Block, over Glendale Savings Bank, Brand and Broadway.
Hours—9-12; 1:30-5
PHONE 468

A. A. MacIntyre, D.D.S., L.D.S.
Graduate of University of Pennsylvania Post-graduate Hinman School of Prosthelia, Atlanta, Georgia, Haskell School of Prosthelia, Chicago, Illinois, Licentiate of Dental Surgery, Toronto, Canada.
Dentistry in all its branches, specializing in Electro-Therapeutic treatment of Pyorrhea by Ultra-Violet Ray etc. Prices reasonable. Office at 306 N. Central. Phone 1480

DR. J. P. LUCCOCK

DENTIST
Hours: 9 to 12 and 1 to 5
Phone Glendale 455
620 East Broadway, Glendale, Calif.

J. K. GILKERSON

CHIROPRACTOR
CITY OFFICE
1117 VAN NUYS BLDG.
Phone 65664. Local, Gl. 1997-J

Glendale Clinical Laboratories
Laboratory Diagnostician
DR. A. GOFF

Associated with
DR. T. C. YOUNG
620 E. Broadway Sunset Gl. 349

C. K. ASTON

Practical Painting and Paperhanging
Furniture and Piano Finishing
631 N. Central Ave.
Glendale, Cal.
Phone Glendale 780-W

WANTED

FURNITURE AND RUGS
Will consider single piece or complete home and pay cash; wish to deal with private owner only. Box 74, Evening News.

CARS RENTED

With or Without Driver
To Responsible Parties
Broadway Garage
721 E. Broadway Glendale 2333-J

ELSA BREIDT

PIANO INSTRUCTION
Wednesdays and Saturdays at home, 118 E. Chestnut St. Tuesdays and Fridays at Studio, Room 336, Blanchard Hall.
Student rates for High School and Grammar School pupils. Tel. Glendale 322-J.

GYSIN-SIGNS

AT YOUR SERVICE
312 East Broadway

TRUCK SERVICE, Harry's Truck Co., 114 E. Broadway, Glendale 180.

MEN WANTED—FOX-WOODSUM LUMBER COMPANY.

WANTED—Few more table boarders by the day or week. Home cooking. Rates reasonable. 319 North Jackson Street. Phone Glendale 227-W.

CAN START THE PAINTING or Decorating on your house any time. Have several extra good painters and paper-hangers. Lexie H. Allison, 416 West Maple. Phone Glendale 834.

WANTED—Teamsters and laborers. Apply Eddy & Daley, 710 East Broadway.

WANTED—Anyone wanting yard or garden work done, inquire G. S. Hess, 106 S. Cedar Street, Glendale.

Andy's Express & Transfer, Quick service. Phone Glendale 1901. 109 1/2 South Brand.

FOR REPAIR WORK on Plumbing and Stoves, ring up Young, the Repair Man, Glendale 276-R. I also sharpen and adjust lawn mowers and do repair work in general. Work guaranteed.

IF YOU WANT to buy or sell poultry, phone Glendale 551-J.

TRUCK SERVICE, Harry's Truck Co., 114 E. Broadway, Glendale 180.

SINGER AGENCY
Sewing machines, repaired, rented and sold on easy terms. Glendale 90 109 N. Brand.

MONEY WANTED—We have several clients who desire loans. Good safe investment. Phone Glendale 51. Bentley-Schoeneman Lumber Company.

MONEY TO LOAN

H. L. MILLER CO. makes any kind of loan. Can finance any amount to \$50,000 loan if necessary. Building loans any amount. 235ft

MONEY TO LOAN on improved real estate at 7 per cent, private party. Address Box K, Evening News.

MONEY TO LOAN — Any amounts. Harry W. Chase, 108 N. Brand Blvd.

We Look After Your Interests

The first consideration of the officers of this bank is the security of the funds entrusted to our care by our depositors.

With a large paid-up capital, a surplus and undivided profit account, a practical management and a representative Board of Directors this bank is prepared to offer you the best service possible based on sound banking principles.

If you are not doing business with us why not begin today?

The First National Bank

Glendale, Cal.

It's Too Hot

TO THINK OF BUYING FUEL, NOW!

But the wise ones are doing it just the same. They know that

Fuel of All Kinds Will Advance Before Winter

If you're wise you'll buy now

WOOD COAL BRIQUETS

We are Headquarters for All Kinds of Feed

Valley Supply Co.

138 North Brand Boulevard

Glendale 537

## Fire Insurance

We Have 4 A-1 Good Companies

MILLER'S NATIONAL UNION, UNITED FIREMANS, NETHERLANDS, PITTSBURG UNDERWRITERS.

We have a lady expressly to write them up in first class shape. We make adjustments quickly. We have been in the fire insurance business 23 years and never raised our price. We are writing one hundred thousand a month. Remember your house will stand 1-8 more insurance now than it would 1 year ago. Protect your family.

Also AUTO INSURANCE, COMPENSATION INSURANCE, AND BURGLAR INSURANCE

**H. L. Miller Co.**

109 S. Brand Glendale 853

## Personals

Mrs. Sadie Benham is having a tent house built at 334 Cameron Place, to cost \$400.

J. M. Barnett of the Brandale apartments, 718 South Brand, is having erected a \$500 garage in connection therewith.

Mrs. Jane Blust has returned to her home in Utica, N. Y., after spending three months with Mrs. J. J. Schremp of 342 West Broadway.

Mrs. Mabel Neiberger, who is employed in the First National Bank, spent the week-end with friends in Riverside.

Dr. and Mrs. Colin Cable were guests at luncheon and for a drive of Mrs. Helen Bennett and daughter, Gertrude, of Kingsley Drive, Los Angeles, Memorial Day.

Henry A. Michel, well-known contractor, yesterday took out a permit for the erection of a 5-room residence at 718 North Pacific avenue, to cost \$3000.

Mrs. Henry Braun of 800 South Glendale avenue and her little daughter went to Ocean Park about a week ago and expect to spend two or three weeks there.

Mr. and Mrs. H. V. Brown and family of North Central avenue motored to Ocean Park and spent Monday. They found a big crowd there, but had a very pleasant time nevertheless.

Mr. and Mrs. C. D. Lusby and daughter, Miss Margaret Lusby, and Mrs. Emery, Dr. and Mrs. C. R. Lusby and son spent Sunday at Ocean Park with Mr. and Mrs. H. A. Wilson.

Mrs. E. B. Hall of 1232 Mariposa street with Mrs. Boring and Mr. Woodmansie of Glendale and a party of about ten friends from Los Angeles enjoyed a week-end hiking and camping trip in Big Tujunga.

Mr. and Mrs. R. M. Brown of 416 North Kenwood street and Mr. and Mrs. V. M. Hollister of North Louise motored to Santa Barbara where they spent Sunday and Memorial Day very pleasantly.

Mr. and Mrs. Spiess and daughter of Redlands spent Sunday and Memorial Day in Glendale as guests of their sister and brother-in-law, Mr. and Mrs. W. O. Borthick, of 811 South Maryland avenue.

H. E. Bartlett of North Brand, who keeps fairly well posted on crop conditions as regards citrus fruit, says that thus far there has been very little dropping and the trees are carrying an excellent load of fruit.

C. J. Morgan is having erected at 1315 East Harvard a building which he will use as a temporary residence until he can put up a dwelling house, and he will then use the temporary structure as a poultry house. People are just bound to live in Glendale, no matter how many inconveniences they have to put up with at first.

Mrs. J. T. Drug of 309 North Belmont is leaving this week for a visit with relatives in San Francisco and she will go on from there to the old home in Stratford, Iowa, to spend the summer. Most of her relatives live back there. She expects to return to Glendale about the first of October.

The first of the week A. R. McPhail of 318 Ivy street said goodbye to his mother, Mrs. M. C. McPhail, and his sister, Miss Ethel McPhail, who have been spending a month in his home and who left to return to their own home in Spokane. They will stop en route to visit another son of Mrs. McPhail in Turlock. It is her first visit to Southern California and she was charmed with the country.

H. W. Peterson, who recently sold his beautiful home on Mountain St., at the head of Brand boulevard, has had plans prepared by Architect Alfred F. Priest for a two-story residence and a garage on Kenneth Road. It will contain seven rooms and two bathrooms. Chris Thoren is the contractor in charge of the construction.

Edgar Lloyd Smith and wife of Los Angeles drove out to Glendale yesterday to look for a place to rent and they may conclude to buy. Mr. Smith is in charge of the Sunday School department of the Christian Missionary Association of Southern California and his wife is a very able coadjutor in the work. Glendale would profit by the advent of this fine family.

Mr. and Mrs. Frederick Baker spent Saturday, Sunday and Monday at their summer cottage in Avalon, Catalina Island and entertained there Mr. and Mrs. William F. Nash, Sr., and Mr. and Mrs. William F. Nash, Jr. Mrs. Baker is having her home on North Maryland done over and thoroughly renovated, papered, painted and put in apple-pie order, and later will spend considerable time at Catalina. Her son, Frederick Baker, is with an engineering party that is doing surveying near Kingman, Arizona, for the Santa Fe Railroad. He likes the outdoor occupation and the sort of work in which he is engaged very much.

Mr. and Mrs. Charles La Duke, who came from West Tennessee several months ago, have taken rooms at the home of Mrs. Ella Griffin on West Acacia avenue.

Mrs. M. E. Runkle of 1332 East Wilson left last night for Portland, Oregon, where she will visit her daughter, Mrs. I. H. Phipps. She will be gone about four weeks.

Robert Carmack, who has been on a freighter plying between San Francisco and the Orient, has been transferred to a passenger boat running between Panama and San Francisco.

F. L. Woolard and wife have moved back into their house at 117 South Jackson, which was badly damaged by fire several weeks ago and which has been thoroughly repaired.

Miss Ethel Van Cise of San Diego who motored to Pasadena Monday to spend some time with friends at the Maryland, will be a luncheon guest today of Mrs. Frank Ayars, of 315 North Orange street. The two ladies are old friends.

A. C. Small, Jr., and wife and their two children, who came here from Seattle, Wash., early in April and have since been living with his parents, A. C. Small and wife, at 1018 North Louise, have gone to Ocean Park to spend the summer.

Attorney and Mrs. James F. McBryde spent the week-end in Pomona and vicinity, visiting relatives. On Sunday they visited with Miss Ella Mosher and Mrs. S. J. Mosher, the fine lemon orchard Mrs. Mosher has just purchased near Uplands, bringing home a fair sample of the fruit grown in that section.

Mrs. Joseph Griffin was much touched when she visited the grave of her father, Major Weiler, following the memorial services at Forest Lawn, to find upon it two flowers dropped from the dirigible which showered the veterans and symbolic grave with flowers during the services.

Word has been received from Rev. R. W. Mottern that he is on his way home from Pennsylvania. He planned to attend the Memorial Day services at Gettysburg and start West the next morning so as to arrive home Saturday night. Rev. Mottern will fill the pulpit at both services Sunday at the Lutheran Church.

Mr. and Mrs. George T. Reuter of 318 Fairview have sold their home to Mr. and Mrs. Roy C. Wallace of Minneapolis. Mr. and Mrs. Reuter will rent until the middle of July when they plan to motor to Vancouver, camping along the way. They expect to be gone about two months after which time they will return to Glendale and build a new home.

Will Hillman and his two little sons arrived Monday to join Mrs. Hillman and the new baby and are now guests in the home of Dr. Duncan on South San Fernando Road. Mr. Hillman plans to be here about a week. The little boys will stay longer. Little Eugene Hillman has recovered from scarlet fever, but is not quite strong yet.

Mrs. A. E. Patch of 125 North Belmont street received a letter the first of this week announcing the death of her sister, Mrs. Ettie White, of Plattsmouth, Nebraska. Mrs. White died suddenly May 26th from complications following an attack of the influenza. Besides Mrs. Patch she is survived by another sister who resides in Plattsmouth.

Thad E. Yager and wife and King Barton and wife arrived at home Monday from a week's fishing trip at Rig Bear Lake. They went and came by the Mill Creek Canyon route, which is just 101 miles in length. They found the roads in fine shape. Some snow is yet visible on the mountains around the lake. They found the fishing still very poor and each of the men made one lonely catch, Mr. Barton's a 5-pounder.

John Madden and wife, who came here just a few days ago from Colorado Springs, Colo., have bought the M. Lyons place at 321 East Maple and have moved into it. While still in Colorado they heard much about Glendale and when Mr. Madden's health broke down they decided to locate here. Their son-in-law and daughter, Dan Tracy and wife, who came to Los Angeles from Colorado Springs with their little daughter early in May, driving through in their machine, have also located in Glendale, buying the Searles place at 610 South Verdugo Road.

## WOMEN'S AUXILIARY

The Women's Auxiliary of the American Legion have been making big strides in membership. On account of not having a meeting on Monday evening, the Charter Membership drive will not be closed until after next Monday evening, June 7th, when it is hoped that the eligible women of Glendale will avail themselves of the opportunity of becoming Charter Members of this organization. On next Saturday evening the last of the series of American Legion Dances which have been taking place at the Pearl Keller Hall will be given under the auspices of the Women's Auxiliary.

## COMMERCIAL STREET

(Continued from Page 1)

blies of all kinds. City Manager Watson says he well remembers attending, as a member of the Tropico brass band, a concert given in the new hall. A neat little two-story depot and freight house was erected by the Southern Pacific Company and West Glendale's future seemed assured. But alas! The panic that blasted Glendale's boom in 1888 was even more fatal to her rival's pretensions, for while the former weathered the storm and began a slow but steady growth, the latter went under completely. The bank was never started and the building became a winery, though it ceased to be used as such a few years ago, the business lots were never sold and the railroad depot was taken down and moved away. But at last, after 32 years, the original city has moved out and lapped up its former rival, and the beautiful curving roadway 120 feet wide that will lure the autoist coming in from the northwest into the very heart of our beautiful city will take the name of the once important street of the new town. It will extend from a point just south of Milford in a southeasterly direction until it joins Broadway at Kenilworth Ave.

## HER FOURTEENTH BIRTHDAY

Mrs. W. O. Borthick of 811 South Maryland was hostess at a little party given Saturday in celebration of the fourteenth birthday of her daughter, Miss Lina Borthick. The girls had a delightful afternoon together amusing themselves with both out-door and indoor games, music and dancing. Mrs. Borthick had beautified her home for the occasion with floral decorations of pink, white and green, carrying out this color scheme at the refreshment table where the place of honor was reserved for a handsome birthday cake bearing fourteen candles. Covers were laid for Misses Helen Buchanan, Irene Robinson, Shirley Chase, Bernardine Boyd and Virginia Dove of Los Angeles, Mary Stanley, Margery and Lillian Chudley, Frances Betz, Lina Borthick, Mrs. Chudley, Mrs. Buchanan, Miss Roesch and the hostess.

## MARY JANE GILLETTE CAMP

At the recent meeting of the Mary Jane Gillette Camp of Daughters of Veterans, much important work for the benefit of the Camp was accom-

## Neighborhood Jealousy

Years ago when every woman did her own washing, many a woman rose at an unearthly hour on Monday morning in order to be the first in the neighborhood to get her clothes on the line. The competition was keen and the jealousy was marked. Women put their talents to better purposes now-a-days. They send their soiled clothing to the Glendale Laundry and spend the extra time in self-improvement, recreation and supervision of the housework. They are healthier, happier and more intelligent for it.

Do We Do Your Laundry Work?

## Glendale Laundry

Glendale 1630

## If You've Made Up Your Mind

that your goods must be moved safely our transfer methods will keep pace with your goods intentions. We can't help but get along in our business. Our vans on the street are a sign of progress. There's only one peculiar thing about our business—when we charge we retreat.

THE MAN WHO KEEPS PACE WITH HIS GOOD INTENTIONS MAY BE SAID TO BE GETTING ALONG



WHEN IT'S YOUR MOVE LET US KNOW!

**Robinson Bros'. Transfer and Fireproof Storage Co.**

304-306 S. Brand Blvd. Phones: Sunset, 428; Night, 1178-J

## Mary Searcy Ball Piano and Organ

Studio: 516 N. Central Ave. Phone: Glendale 1269-W.

## Fanset DYE WORKS None Better Cleaners and Dyers

110 East Broadway Phone Glendale 155, Main 5

## Phone Glendale 154

Tubercular Tested Raw Milk, Pasteurized Milk and Cream, Fresh Buttermilk, Cottage Cheese and Butter, Delivered Fresh Morning and Evening.

**Glendale Creamery Co.**  
755 West Doran Street  
Established 1907

## NEW RATE

Japanese Day Work Increased Rate:  
All Day (8 hours).....\$4.50  
Half Day (4 hours).....2.40  
One Hour......60

## Vorwerk & Vickers Garage

Open From 7 a.m. to 11 p.m. 137 N. Maryland Glendale

Wm. Prendeville Jos. Prendeville Phone 417 Phone 416-J  
**PRENDEVILLE BROTHERS**  
Plastering Contractors  
Exterior Work and Patching  
A Specialty  
335 Patterson Ave., Glendale, Cal.

## GLENDALE SHAMPOO PARLORS

Misses Goold and Cartwright, Proprietors  
Marinello Toilet Preparations  
Hair Work a Specialty. Appointments  
Phone Glendale 670  
103-A N. Brand, Rudy Bld., Glendale

Don't throw away a broken metal article—Take it to the

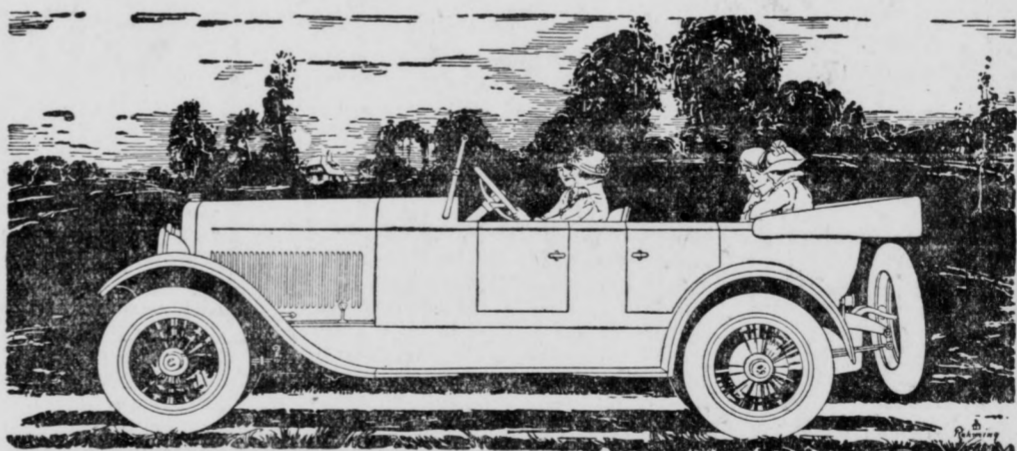
## Glendale Welding and Brazing Co.

217 E. Bdwy. Glendale 2000-W

## CESSPOOLS

Arrange for Your Cesspool at 131 S. Brand Glendale 408

## CHANDLER SIX Famous For Its Marvelous Motor



## The Chandler Gives You the Service You Demand

THOUGHTFUL men, in selecting an automobile, find in the history of the Chandler Six a source of real confidence.

The Chandler motor of today is the development of the Chandler motor of seven years ago, embracing refinements and improvements which have been the natural development of these years of service in the hands of thousands of owners, and the constant application of the engineering skill and the sincerity of its builders.

Motors of one type and another have been heralded within these years. But the Chandler motor, its true superiority proven in service on every roadway in America and in many nations abroad, has lived and gone forward into a place of distinction.

Men who have owned and driven many cars, men from coast to coast, will tell you the Chandler is the leader of all sixes. Over the long mountain roads or on the trails of the desert or in crowded city traffic, anywhere, the Chandler will give you the service you demand. Its power, its flexibility, and its sturdy endurance are not surpassed.

The Chandler Six is the Most Closely Priced Fine Car Built

## SIX SPLENDID BODY TYPES

7-Pass. Touring Car.....\$2265 4-Pass. Roadster.....\$2265  
4-Pass. Dispatch Car.....\$2350  
7-Pass. Sedan.....\$3335 4-Pass. Coupe.....\$3230 Limousine.....\$3865

F. O. B. Glendale

## BARTLETT & FRENCH

BRAND AT HARVARD PHONE 1667 GLENDALE, CAL.

CHANDLER MOTOR CAR COMPANY, CLEVELAND, OHIO

# Goodyear Tires

CORD, FABRIC OR MOULDED

Ford Sizes Always in Stock

## FORD AGENCY GLENDALE

JESSE E. SMITH, Agent

Broadway and Kenwood Glendale 432

**Just Arrived!!**  
2 CARLOADS  
of  
**CLARK JEWEL and ECLIPSE GAS RANGES**

ON DISPLAY

at the

**Southern California Gas Company**  
112 WEST BROADWAY  
GLENDALE 714

### Hardwood Floors

OLD FLOORS SCRAPED

Floors Laid, Scraped and Finished

Estimates Cheerfully Furnished

**H. R. BOWERS FLOORING CO.**

112-A E. Broadway, Glendale 1359

### Morgan Bros. Transfer

Formerly

JESSE'S EXPRESS

Glendale 75 109 B E. Broadway

### VERDUGO RANCH

W. P. BULLOCK, Prop.  
NATURAL JERSEY MILK  
Milked and Bottled on our own Farm  
Coffee Cream—Whipping Cream  
Night Deliveries in Glendale  
No Telephone Connection

### Glendale Sheet Metal Works

"Everything in Sheet Metal"

Phone Glendale 1422-J

127 N. Glendale Ave. Glendale, Cal.

CALL THE

### Wildman Transfer Co.

STORAGE

Office 120 E. Laurel Street  
For Prompt, Efficient Service and Right Prices

Phone Glendale 262-W

### BRICKWORK and MANTLES

Call

**J. F. KLANN**

Glendale 766-J

### INDEPENDENT ICE CO.

Ice on Platform or Delivered.  
Courtous Treatment.

OFFICE

106 East California St.

Phone Glendale 217

When you want it done right bring it to the

### Pioneer Welding Co.

Expert Welding and Radiator Repairing  
Ph. 1918-W 113 W. Harvard

Order Your Markers and Monuments from the

### GLENDALE MONUMENT WORKS

Near Forest Lawn Cemetery  
1411 San Fernando Blvd.  
HARRY J. REINHARD, Prop.  
Phone Glendale 1246; Res. 742-W

#### SMITH—HOBBS

(Continued from Page 1)

ried gladioli and delphinium. Miss Kathleen Dodge, maid of honor, wore light green taffeta with a picture hat to match and also carried gladioli and delphinium. The mother of the bride was in beaded white Georgette crepe de chine. Supporting the groom was his old friend, Jamie Shea. Both men wore the conventional tuxedo.

Preceding the ceremony Madame Catherine Shank sang "All for You," Mrs. Noble Ripley, sister of the bride, playing the accompaniment. The wedding march was played by Floyd Freeman, of Los Angeles, a friend of the groom.

Following the ceremony a buffet luncheon was served upon the lawn at the rear of the house. Here, too, the artistic ingenuity of the bride was manifest, for the plates with which guests were served were gilded paper plates on which was a white lace paper doily and attached to each plate by a long white ribbon was a little gilded tin spoon. The favors, which had also been prepared by the bride, were little squares of wedding cake wrapped in white maline edged with gilt and tied with white ribbon.

When the bride had tossed her bouquet and it had been caught by Lila Webster, and had exchanged her wedding dress for her going away gown of dark blue tricotine with hat to match, she and Mr. Smith were ready to take possession of the car which was to bear them away on their wedding journey. Then their troubles began. Wayne Smith has participated in many weddings in the past—actively participated in a manner which made his married friends determined to get even with him. The discovery was soon made that all the air had been let out of the tires of both the Smith and Hobbs cars, but John A. Logan, uncle of the bride, endeavored to help them out. Then the conspirators closed in around them and blocked their progress. Another guest came to the rescue with a closed car into which bride and groom managed to hurriedly transfer themselves, but a well-directed shot punctured one of the tires and stopped their flight. Getting out of that machine the persecuted young people ran around the corner where they were picked up and borne away by Mr. Logan a few minutes later.

The Hobbs home was beautifully decorated with Enchantress Carnations, pink sweet peas and Shirley poppies and there were displayed a wonderful array of wedding gifts, which included everything a bride could desire in the way of silver, linen, cut glass and bric-a-brac.

About one hundred and thirty guests were present from Glendale and other cities of Southern California—Pasadena, Long Beach, San Diego, Los Angeles, Exeter and relatives of the groom were present from Iowa.

On returning from their wedding journey Mr. and Mrs. Wayne Smith will be at home to their friends in the course of a month at 519 North Maryland, this city.

### WE KNOW HOW AND DO IT Glendale Carpet and Mattress Renovating Works

1419 S. San Fernando Road,  
Glendale

Old mattresses made like new. Rugs cleaned and sized. Fluff Rugs made from your old carpet, also Rag Rug weaving and rugs dyed. Mattresses for sale.

PHONE GLENDAL 1928

### The Glendale Book Store

PICTURE FRAMING

C. H. BOTT, Prop.  
113 S. BRAND BOULEVARD

### CRYSTAL ICE

MADE IN GLENDALE

Delivered anywhere in Glendale, including Tropico District. Full weight and prompt service. Factory 1126 East Wilson. Phone Glendale 147.

Patronize Home Industry!

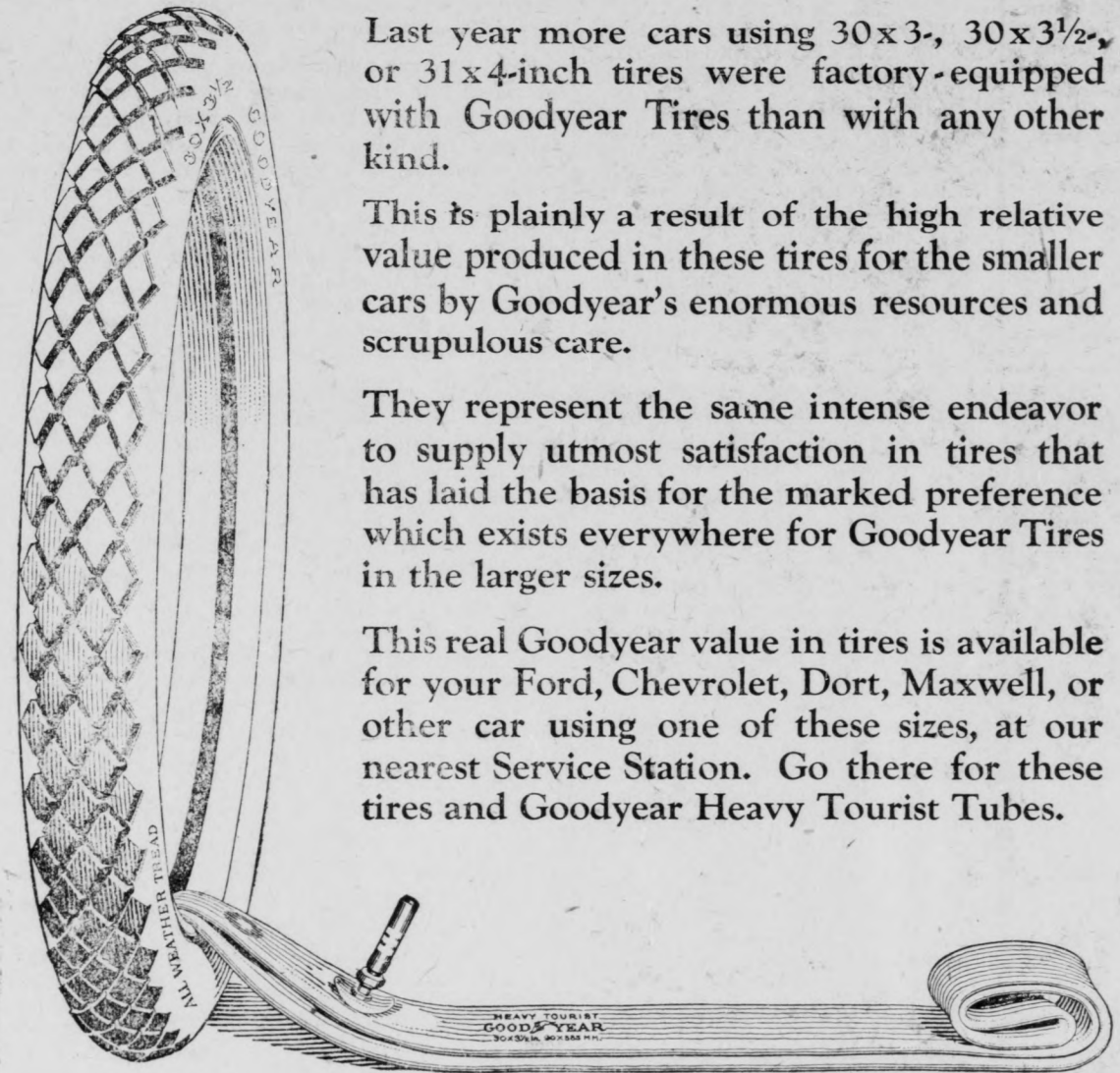
### THORNYCROFT SANITARIUM

1100 E. Windsor Road

AGED PEOPLE A SPECIALTY

Telephone Glendale 70

## Why a Majority of the Smaller Cars Come on Goodyear Tires



Last year more cars using 30x3-, 30x3½-, or 31x4-inch tires were factory-equipped with Goodyear Tires than with any other kind.

This is plainly a result of the high relative value produced in these tires for the smaller cars by Goodyear's enormous resources and scrupulous care.

They represent the same intense endeavor to supply utmost satisfaction in tires that has laid the basis for the marked preference which exists everywhere for Goodyear Tires in the larger sizes.

This real Goodyear value in tires is available for your Ford, Chevrolet, Dort, Maxwell, or other car using one of these sizes, at our nearest Service Station. Go there for these tires and Goodyear Heavy Tourist Tubes.

30x3½ Goodyear Double-Cure Fabric, All-Weather Tread \$23.50

30x3½ Goodyear Single-Cure Fabric, Anti-Skid Tread \$21.50

Goodyear Heavy Tourist Tubes are thick, strong tubes that reinforce casings properly. Why risk a good casing with a cheap tube? Goodyear Heavy Tourist Tubes cost little more than tubes of less merit. 30x3½ size in water-proof bag \$4.50



## Goodyear Service Station Monarch Auto Supply Co.

121 S. Brand Boulevard

:::

Telephone Glendale 679

A dreadful calamity menaces us. The government printing office is so short of paper that it may not be able to supply senators and representatives with copies of speeches for campaign distribution.

It is declared that should the San Francisco convention indorse President Wilson's policies it will mean party suicide and not to do it will result in certain death. The only thing left is to arrange for the obsequies.

Is sugar going to make a try for the high-diving prize?



### Bring Your Present Suit Here

to be dry cleaned and save the expense of a new one. If you doubt our ability to save you that much why not put us to the test? You cannot lose for we certainly can put the suit in wearable shape, which at present it is not.

## GLENDALE DYE WORKS

Phone, Glendale 207

Office and Plant, 135½ S. Brand

### NOTICE OF HEARING OF PETITION FOR PROBATE OF WILL

No. 47250

In the Superior Court of the State of California in and for the County of Los Angeles.

In the matter of the estate of Elizabeth I. Weaver, Deceased.

Notice is hereby given that the petition of M. L. Weaver for the Probate of the Will of Elizabeth I. Weaver, Deceased, and for the issuance of Letters Testamentary thereon to M. L. Weaver, will be heard at 2 o'clock p. m., on the 21st day of June, 1920, at the Court Room of Department 2 of the Superior Court of the State of California, in and for the County of Los Angeles.

Dated May 27th, 1920.

L. E. LAMPTON, Clerk.

By H. H. DOYLE, Deputy.

JAMES F. MCBRYDE,

Attorney for Petitioner.

103-A North Brand, Glendale, Calif.

Advertise it, or advertise for it in the Evening News.

## Glendale Plumbing Co.

SANITARY AND HEATING ENGINEERS

For Service and Satisfaction

Phone Glendale 408

131 S. Brand Blvd.

Secretary Houston says the price of whisky in the illicit trade ranges from \$60 to \$120 a gallon. Does he quote these prices from knowledge gained from a personal interview with bootleggers or on mere hearsay?

The former kaiser's yachts are offered for sale. The facilities for sailing them around Doorn are not good.

Mr. Palmer says the president has no right to buy the Cuban sugar crop. He has not been at all meticulous about his rights in things he wanted to do.

### GLENDALE COMMERCIAL SCHOOL

Thorough Stenographic, Bookkeeping, and Special Courses

Glendale 85 219½ E. Broadway