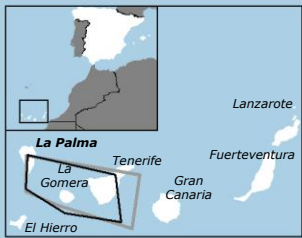


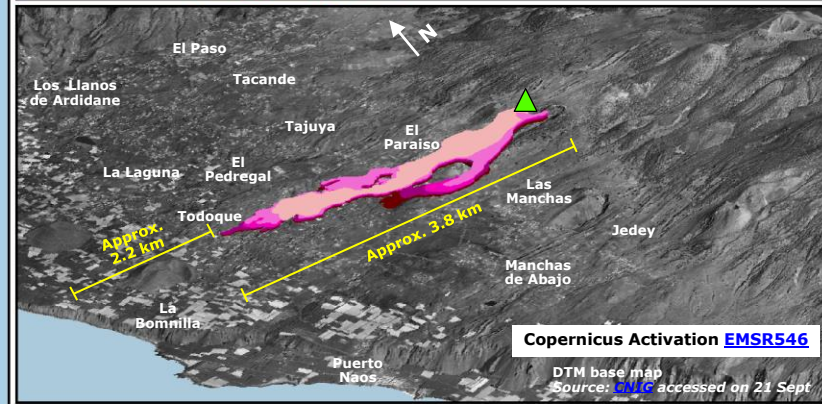
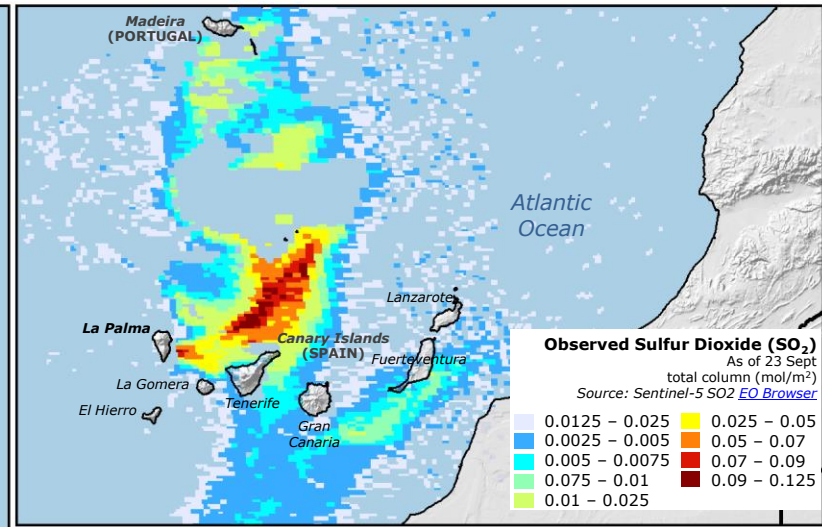
# Spain, Canary Islands (La Palma) | Cumbre Vieja volcanic eruption



**Volcanic ash**  
 Source: [Volcanic Ash Advisory](#)  
 Observed 14.00 UTC 24 Sept  
 Forecast +18 hours

**La Palma**  
 Pop: 83,458\*

19 Sept at 14.10 UTC  
 Start of the volcanic eruption



**Situation Overview as of 24 Sept**  
 Source: Spanish Civil Protection

- At least 5,700** Evacuated people
- 400** Destroyed houses
- 800** Deployed emergency personnel
- 220 ha** Area affected by lava

**Legend**

- Main eruptive vent
- GDACS Orange alert**
- Exclusion radius (2.5 km)  
Source: [Government of Canary Islands](#)
- Maritime exclusion zone  
Source: [Government of Canary Islands](#)
- Lava flow detection**  
Source: [Copernicus EMSR546](#)
- 20 Sept
- 21 Sept
- 22 Sept
- 23 Sept
- 24 Sept
- Evacuation centres  
Source: [CENEM](#), [Government La Palma](#)
- Closed roads
- Built-up  
Source: [CNIG](#), [OSM](#)
- Natural area/ Natural park
- Cropland
- Roads
- Airport
- Port
- Municipality limit

**Name** Municipalities under evacuation order/  
 Source: [Volcanic Risk Information of the Government of La Palma](#)