

SECRET

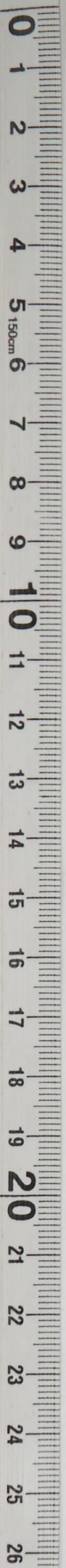
370.05

STRONGBARK

1948

G-4 Adm File

SECRET



GENERAL HEADQUARTERS
FAR EAST COMMAND

G-4 ROUTING

SECRET

OUTGOING MESSAGE

DATE: 28 Oct 1948

EXECUTIVE PLANS & POLICY

OPERATIONS

CONST & FAC

TRANSPORTATION

SUPPLY

PETROLEUM

BUDGET

PERSONNEL

ADMINISTRATION

FROM: CINCPH

TO : CG USAFIK
CG EIGHTH ARMY
CGMAVFE
CG FIAF
CG HQ & SV GP

PRIORITY
ROUTINE
ROUTINE
COURIER
COURIER

PAREN PAREN THIS RADIO IN FOUR PARTS PD SUBJECT IS BASIC
ADMINISTRATION
OUTLINE PLAN FOR QUOTE STRONGBARK UNQUOTE OPERATIONS CMA EDITION TWO CMA EIGHT

DECEMBER FOUR SEVEN PD PARA PART ONE PD ADD AS PARA THREE CHARLIE PAREN TWO
PAREN PAREN ABLE PAREN CLN USES ANY SUITABLE SCAP CONTROLLED OR UNCLE SUGAR
WATER TRANSPORTATION WHICH MAY BE IN THE HARBORS OF INCHON AND SLANT OR PUSAN
WHEN CONSIDERED ESSENTIAL FOR THE RAPID EVACUATION OF SUBJECT PERSONNEL PD
ADVISES CINCPH OF ACTION TAKEN BY MOST EXPEDITIOUS MEANS PD PARA PART TWO PD
ADD AS PARA THREE CHARLIE PAREN TWO PAREN PAREN BAKER PAREN CLN INFORMS CINCPH
IN THE EVENT INSUFFICIENT UNCLE SUGAR SURFACE TRANSPORTATION IS AVAILABLE IN
KOREAN HARBORS FOR EVACUATION OF SUBJECT PERSONNEL WHEN IT IS CONSIDERED
RAPID EVACUATION ESSENTIAL PD REQUESTS EXPEDITIOUS DISPATCH OF SURFACE
TRANSPORTATION INDICATING SPACE REQUIREMENTS AT RESPECTIVE KOREAN PORTS PD
PARA PART THREE PD PARA THREE CHARLIE PAREN TWO PAREN PAREN ABLE PAREN PAREN
BAKER PAREN PAREN CHARLIE PAREN ARE RENUMBERED THREE CHARLIE PAREN TWO PAREN
PAREN CHARLIE PAREN PAREN DOG PAREN PAREN EASY PAREN PD PARA PART FOUR PD THIS
ANSWERS COMGEN USAFIK RAD ZEBRA GEORGE CHARLIE TARE ONE SEVEN FOUR ONE CMA TWO
TWO OCT FOUR EIGHT PD

OFFICIAL:

APPROVED BY:

R. M. LEVY
Colonel, AGD
Adjutant General

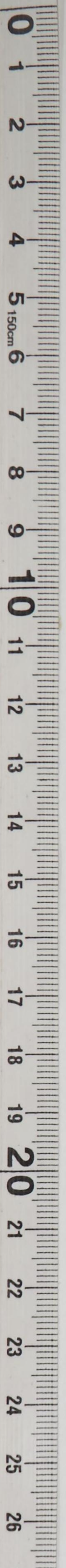
W. A. BEIDERLINDEN
Brig General, GSC
Asst Chief of Staff, G-1

SECRET

Copies to: CinC, C/S, DC/S, FEC, DC/S SCAP, JPO, G-2, G-3, G-4, Transp Sec

M/R: USAFIK rad ZGCT 1741, 22 Oct 48, recommends above add to par 3c (2) "Oper
ations, Coordination, CG, USAFIK" to "Strongbark" Operation Plan. Concurrences
JPO, G-3, G-4. Appvd by C/S 10/27/48. (Lt Col Capers 26-5866)

DECLASSIFIED
Authority NND 975029



GENERAL HEADQUARTERS, FAR EAST COM. AND
ADJUTANT GENERAL'S OFFICE
RADIO AND CABLE CENTER

WLH
ejh

INCOMING MESSAGE WLH

*370,05
with m/R*

Secret
PRIORITY

copy X
22 Oct 48

G-4 ROUTING	
A C/S G-4	_____
D AC/S G-4	_____
EXECUTIVE	_____
PLANS & POLICY	<i>mes</i>
OPERATIONS	_____
CONST & FAC	_____
TRANSPORTATION	_____
SUPPLY	_____
PETROLEUM	_____
BUDGET	_____
PERSONNEL	_____
ADMINISTRATION	_____

FROM : CG USAFIK
TO : CINCFE
NR : ZGOT 1741

This radio in 3 parts.

Part 1: Recommend that plan "Strongbark" include the fol as Para 3 C (2) (A): Use any suitable water transportation which may be in the harbors of Inchon and/or Pusan, which is considered essential for the rapid evacuation of depts and DACs. Report of this action will be furnished CINCFE by the most rapid means possible.

Part 2: Include as Para 3 C (2) (B): Will inform CINCFE that no US water transportation or insufficient water transportation is available in Korean harbors for the evacuation of depts and DACs. Request that proper amount of water transportation be made available to USAFIK for the evacuation of these personnel.

Part 3: That Para 3 C (2) (A) (B) (C) be changed to read Para 3 C (2) (C) (D) (E).

NO SIG

ACTION : G-3 *2-1*

INFORMATION : COMMANDER IN CHIEF, CHIEF OF STAFF, G-1, G-2, G-4, JSPOG

98520

PRIORITY

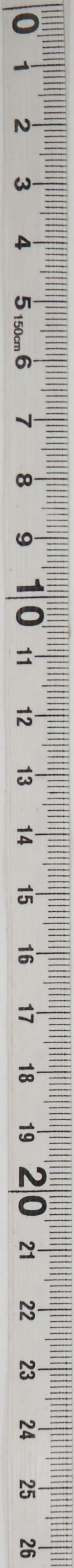
TOO : 221246 Z
MCN : 86275

Secret

Paraphrase not required. Handle as correspondence of classification carried hereon per paragraphs 51i and 60a, AR 380-5.

G-3 has prepared action incorporating these changes and approving them. See onward CX64906 - 28 Oct 48





[Faint, mostly illegible text and markings on the document page]



NOV 1948

PRIORITY

SECRET

G-4 Adm File

SECRET

