

~~Yellowstone~~
F
722.9
-01
no. 843

Supplement to January Issue of
THE TYPOGRAPHIC MESSENGER

Souvenir Views
of
YELLOWSTONE
NATIONAL PARK

FEATURING
THE LINCOLN CONNER CORPORATION
Manufacturers of
Printing and Lithographic Inks
of Exceptional Quality

For Sale and Stocked by
CONNER FENDLER & CO.
Ninety-Six Beekman Street, New York City

YELLOWSTONE NATIONAL PARK

YELLOWSTONE PARK was created March first, 1872, by an act of Congress. It was one of the first national parks in the United States, reserved from settlement, so that the natural wonders contained therein would be preserved for all time from mutilation.

The only evidences of civilization are the splendid highways, the system of trails reaching out into the less accessible places, hotels, and camps, made necessary in caring for the wants of travelers.

One hundred feet from any road or trail, one finds a wilderness in the same virgin state in which the explorers of the famous expedition of 1870 found it.

The boundaries of the park embrace an area of more than 3,000 square miles, in which are the great terraces, which eclipse those in New Zealand, more and greater geysers than are found in Iceland, and all the rest of the world combined, and canyons whose volcanic sides, by decomposition of their minerals, have taken on the most brilliant and beautifully blended colors.

The park plateau averaging more than 8,000 feet elevation, on all sides is surrounded by mountains, waterfalls and cascades. In the heart of this plateau is Yellowstone Lake.

In this area, in their native state, are found great numbers of wild animals, which, free from molestation, have become comparatively fearless.

Fishing in the lakes and streams is permitted under certain regulations, but no hunting of any kind is permitted.

The administration of the park is vested in the National Park Service, Department of the Interior, and the superintendent's office is at Mammoth Hot Springs.





MAGAZINE BLACK—50c.



SHOSHONE CANYON AND TUNNEL
© Haynes, St. Paul



MAGAZINE BLACK—50c.



Digitized by the Internet Archive
in 2013

<http://archive.org/details/souvenirviewsofy843conn>



SUDAN CUT BLACK—75c.

GREAT FALLS (Twice as High as Niagara)
Haynes, St. Paul



EUREKA BLACK—75c



HALF DOME, YOSEMITE PARK, CAL.



HAMILTON CUT BLACK—\$1.00

A PARK (PAPA) BEAR

Haynes, St. Paul



HAMILTON BLACK—\$1.00



CAPITOL CUT BLACK—\$1.25

TOWER FALLS AND TOWERS
© Haynes, St. Paul



AGADES CUT BLACK—\$2.00

CATHEDRAL SPIRES, YOSEMITE PARK, CAL.



AGADES CUT BLACK—\$2.00

GATEWAY TO YOSEMITE PARK, CAL.



ILLUSTRATOR'S HALF TONE BLACK—\$2.00

PUNCH BOWL SPRINGS

Haynes, St. Paul



BLUE BLACK LIGHT—\$2.00

HANDKERCHIEF POOL

© Haynes, St. Paul

*You Drop a Handkerchief at the Edge of the Pool, it is Drawn Out of Sight;
in a Few Minutes it Reappears, Washed*



BLUE BLACK DEEP—\$2.00

A PARK BUFFALO

© Haynes, St. Paul



BRONZE BLUE BLACK—\$2.00

ANGEL TERRACE

© Haynes, St. Paul



BRONZE BLUE NO. 406—\$2.00

ANGEL TERRACE

© Haynes, St. Paul



BRONZE BLUE NO. 406—\$2.00

GIANT GEYSER CONE

Haynes, St. Paul



BRONZE BLUE NO. 1047—\$3.00

GIANT GEYSER CONE

Haynes, St. Paul



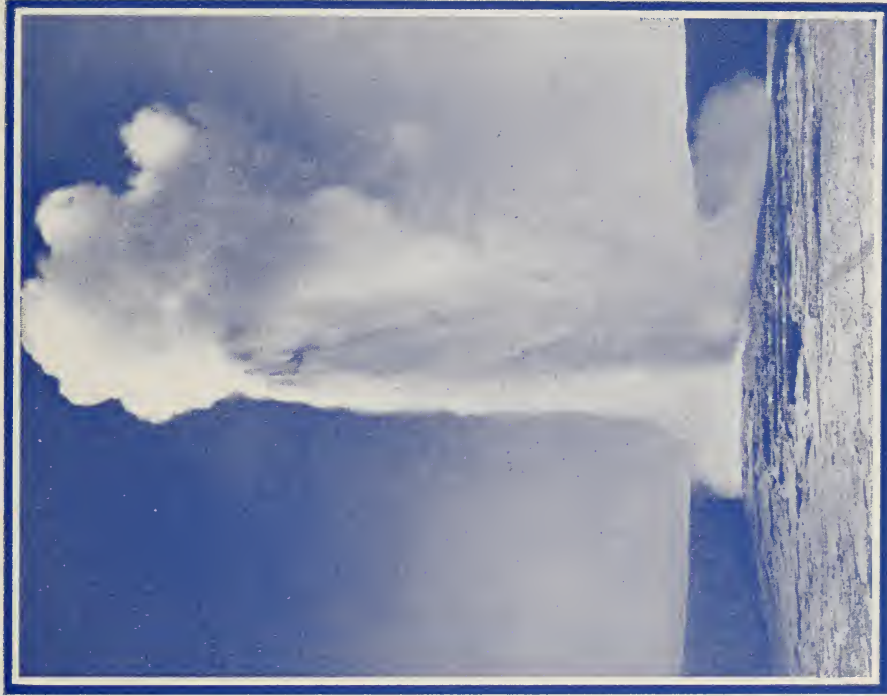
BRONZE BLUE NO. 1047—\$3.00

GATEWAY TO YOSEMITE PARK, CAL.



CONCENTRATED BLUE—\$4.00

OLD FAITHFUL GEYSER Haynes, St. Paul
*Rain or Shine, Winter or Summer, Every Sixty-five Minutes an Eruption
Occurs Projecting a Stream of Boiling Water One Hundred and Fifty Feet
in the Air*



AZURE BLUE—\$2.50

FOUNTAIN GEYSER

© Haynes, St. Paul



PEACOCK BLUE—\$4.00

GATEWAY TO YOSEMITE PARK, CAL.



PEACOCK BLUE—\$4.00

GRAND CANYON HOTEL

Haynes, St. Paul



PURPLE LAKE REDDISH—\$3.00



PURPLE LAKE REDDISH—\$3.00

MIRROR LAKE, YOSEMITE PARK, CAL.



PURPLE LAKE BLUISH—\$3.00



PURPLE LAKE BLUSH—\$3.00

VEGIVAL FALLS, YOSEMITE PARK, CAL.



31679 (M) YERGEN — \$1.40

MINERVA TERRACE

Haynes, St. Paul



PERSIAN ORANGE--\$2.00

FISHING CONE

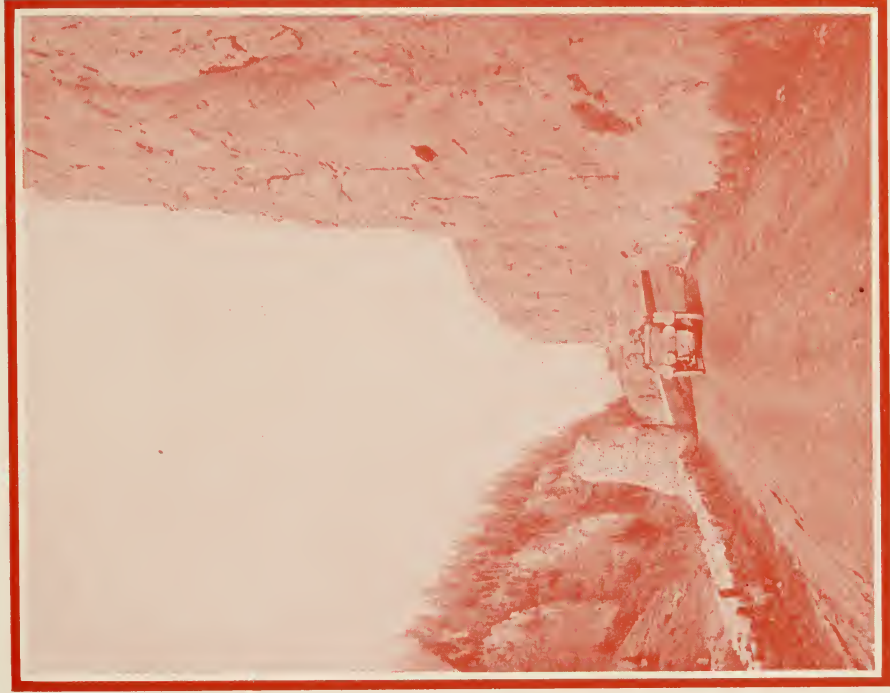
© Haynes, St. Paul

*Catch a Fish in Yellowstone Lake and Cook it in the Cone. Yellowstone Lake,
the Highest Large Lake in the World*



BRILLIANT RED—\$3.00

GOLDEN GATE ENTRANCE © Haynes, St. Paul



BRILLIANT RED—\$3.00

CASTLE GEYSER © Haynes, St. Paul



BRILLIANT SCARLET—\$2.50

CASTLE GEYSER © Haynes, St. Paul



BRILLIANT SCARLET—\$2.50

ELECTRIC PEAK

Haynes, St. Paul



CONCENTRATED RED—\$4.00

ELECTRIC PEAK

Haynes, St. Paul



CONCENTRATED RED—\$4.00

YOSEMITE FALLS, YOSEMITE PARK, CAL.

Highest Falls in the World



DEEP RED LAKE—\$2.50

YOSEMITE FALLS, YOSEMITE PARK, CAL.

Highest Falls in the World



DEEP RED LAKE—\$2.50

ADMINISTRATIVE HEADQUARTERS © Haynes, St. Paul



BRAZIL BROWN—\$2.50

SUMMIT OF MOUNT WASHBURN

© Haynes, St. Paul



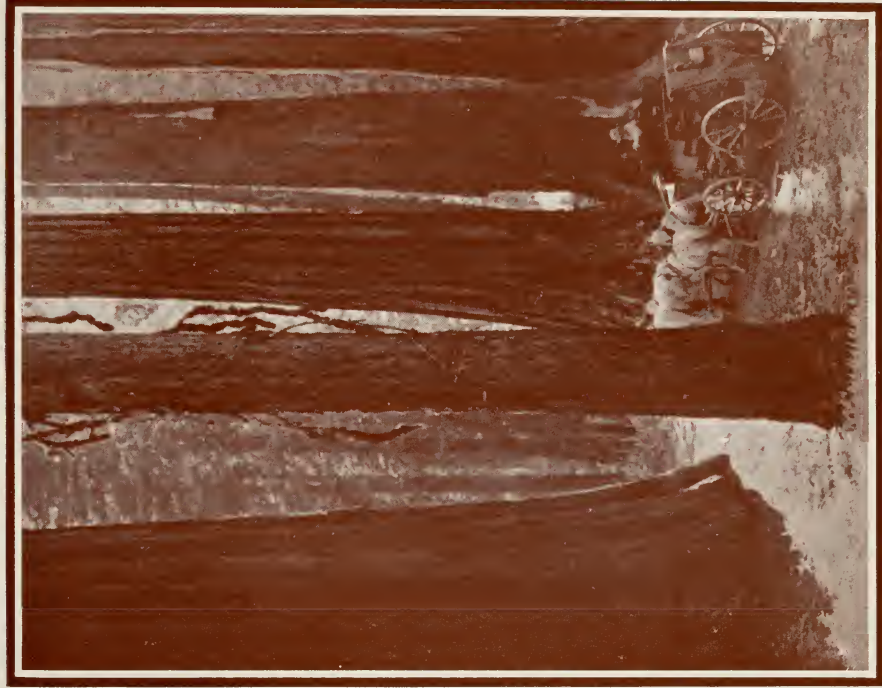
BROWN LAKE LIGHT—\$2.50



BROWN LAKE LIGHT—\$2 50

MARIPOSA GROVE, YOSEMITE PARK, CAL.

Highest, Largest Grove of Trees in America



BROWN LAKE MEDIUM—\$2.50

GOLDEN GATE CANYON

Haynes, St. Paul



BROWN LAKE MEDIUM—\$2.50



BROWN LAKE DEEP—\$2.50

BLACK AND BROWN BEARS

© Haynes, St. Paul



BROWN LAKE DEEP—\$2.50

GIBBON FALLS

Haynes, St. 1900



GREEN LAKE LIGHT—18.00

SYLVAN LAKE

Haynes, St. Paul



GREEN LAKE LIGHT—\$3.00

JACKSON LAKE AND MT. MORAN

Haynes, St. Paul



GREEN LAKE MEDIUM—\$3.00

CLEOPATRA TERRACE

© Haynes, St. Paul



GREEN LAKE MEDIUM—\$3.00



SHOSHONE RIVER DRIVEWAY © Haynes, St. Paul



GREEN LAKE DEEP—\$3.00

CHRISTMAS TREE PARK

© Haynes, St. Paul



GREEN LAKE DEEP—\$3.00

Illustrations Through the Courtesy of
THE HAYNES STUDIOS
ST. PAUL, MINN.

Publishers of Haynes Guide Book of Yellowstone Park

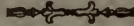
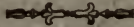


Photo Engravings by
THE UNIVERSAL ENGRAVING COMPANY
88 GOLD STREET, NEW YORK CITY



Printed on Compco English Finish
Compco Enamel Cover
Furnished by
THE COMMERCIAL PAPER & CARD CO.
24 BOND STREET, NEW YORK CITY