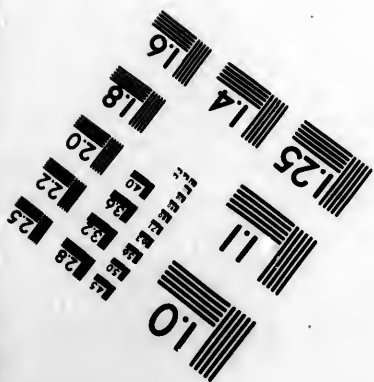
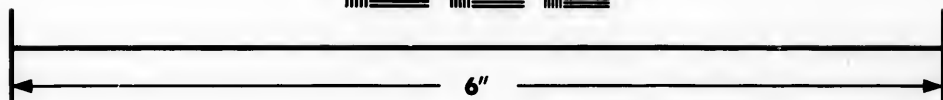
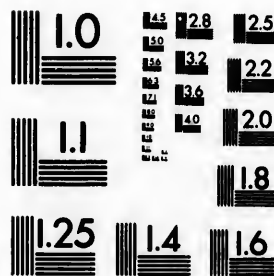


**IMAGE EVALUATION
TEST TARGET (MT-3)**



**Photographic
Sciences
Corporation**

23 WEST MAIN STREET
WEBSTER, N.Y. 14580
(716) 872-4503

**CIHM/ICMH
Microfiche
Series.**

**CIHM/ICMH
Collection de
microfiches.**



Canadian Institute for Historical Microreproductions / Institut canadien de microreproductions historiques

© 1983

Technical and Bibliographic Notes/Notes techniques et bibliographiques

The Institute has attempted to obtain the best original copy available for filming. Features of this copy which may be bibliographically unique, which may alter any of the images in the reproduction, or which may significantly change the usual method of filming, are checked below.

L'Institut a microfilmé le meilleur exemplaire qu'il lui a été possible de se procurer. Les détails de cet exemplaire qui sont peut-être uniques du point de vue bibliographique, qui peuvent modifier une image reproduite, ou qui peuvent exiger une modification dans la méthode normale de filmage sont indiqués ci-dessous.

- | | |
|---|---|
| <input type="checkbox"/> Coloured covers/
Couverture de couleur | <input type="checkbox"/> Coloured pages/
Pages de couleur |
| <input type="checkbox"/> Covers damaged/
Couverture endommagée | <input type="checkbox"/> Pages damaged/
Pages endommagées |
| <input type="checkbox"/> Covers restored and/or laminated/
Couverture restaurée et/ou pelliculée | <input checked="" type="checkbox"/> Pages restored and/or laminated/
Pages restaurées et/ou pelliculées |
| <input type="checkbox"/> Cover title missing/
Le titre de couverture manque | <input checked="" type="checkbox"/> Pages discoloured, stained or foxed/
Pages décolorées, tachetées ou piquées |
| <input type="checkbox"/> Coloured maps/
Cartes géographiques en couleur | <input type="checkbox"/> Pages detached/
Pages détachées |
| <input type="checkbox"/> Coloured ink (i.e. other than blue or black)/
Encre de couleur (i.e. autre que bleue ou noire) | <input checked="" type="checkbox"/> Showthrough/
Transparence |
| <input type="checkbox"/> Coloured plates and/or illustrations/
Planches et/ou illustrations en couleur | <input type="checkbox"/> Quality of print varies/
Qualité inégale de l'impression |
| <input type="checkbox"/> Bound with other material/
Relié avec d'autres documents | <input type="checkbox"/> Includes supplementary material/
Comprend du matériel supplémentaire |
| <input type="checkbox"/> Tight binding may cause shadows or distortion along interior margin/
La reliure serrée peut causer de l'ombre ou de la distortion le long de la marge intérieure | <input type="checkbox"/> Only edition available/
Seule édition disponible |
| <input type="checkbox"/> Blank leaves added during restoration may appear within the text. Whenever possible, these have been omitted from filming/
Il se peut que certaines pages blanches ajoutées lors d'une restauration apparaissent dans le texte, mais, lorsque cela était possible, ces pages n'ont pas été filmées. | <input type="checkbox"/> Pages wholly or partially obscured by errata slips, tissues, etc., have been refilmed to ensure the best possible image/
Les pages totalement ou partiellement obscurcies par un feuillet d'errata, une pelure, etc., ont été filmées à nouveau de façon à obtenir la meilleure image possible. |
| <input type="checkbox"/> Additional comments:
Commentaires supplémentaires: | |

This item is filmed at the reduction ratio checked below/
Ce document est filmé au taux de réduction indiqué ci-dessous.

10X	14X	18X	22X	26X	30X
<input type="checkbox"/>	<input type="checkbox"/>	<input type="checkbox"/>	<input checked="" type="checkbox"/>	<input type="checkbox"/>	<input type="checkbox"/>
12X	16X	20X	24X	28X	32X

The copy filmed here has been reproduced thanks to the generosity of:

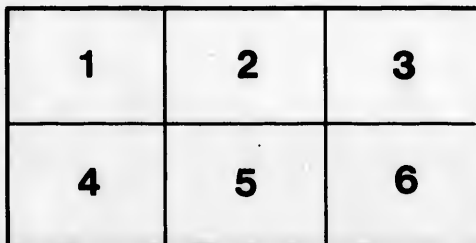
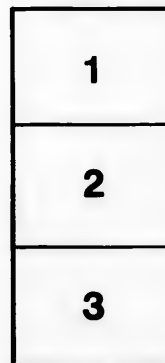
Library of the Public
Archives of Canada

The images appearing here are the best quality possible considering the condition and legibility of the original copy and in keeping with the filming contract specifications.

Original copies in printed paper covers are filmed beginning with the front cover and ending on the last page with a printed or illustrated impression, or the back cover when appropriate. All other original copies are filmed beginning on the first page with a printed or illustrated impression, and ending on the last page with a printed or illustrated impression.

The last recorded frame on each microfiche shall contain the symbol \rightarrow (meaning "CONTINUED"), or the symbol ∇ (meaning "END"), whichever applies.

Maps, plates, charts, etc., may be filmed at different reduction ratios. Those too large to be entirely included in one exposure are filmed beginning in the upper left hand corner, left to right and top to bottom, as many frames as required. The following diagrams illustrate the method:



L'exemplaire filmé fut reproduit grâce à la générosité de:

La bibliothèque des Archives
publiques du Canada

Les images suivantes ont été reproduites avec le plus grand soin, compte tenu de la condition et de la netteté de l'exemplaire filmé, et en conformité avec les conditions du contrat de filmage.

Les exemplaires originaux dont la couverture en papier est imprimée sont filmés en commençant par le premier plat et en terminant soit par la dernière page qui comporte une empreinte d'impression ou d'illustration, soit par le second plat, selon le cas. Tous les autres exemplaires originaux sont filmés en commençant par la première page qui comporte une empreinte d'impression ou d'illustration et en terminant par la dernière page qui comporte une telle empreinte.

Un des symboles suivants apparaîtra sur la dernière image de chaque microfiche, selon le cas: le symbole \rightarrow signifie "A SUIVRE", le symbole ∇ signifie "FIN".

Les cartes, planches, tableaux, etc., peuvent être filmés à des taux de réduction différents. Lorsque le document est trop grand pour être reproduit en un seul cliché, il est filmé à partir de l'angle supérieur gauche, de gauche à droite, et de haut en bas, en prenant le nombre d'images nécessaire. Les diagrammes suivants illustrent la méthode.

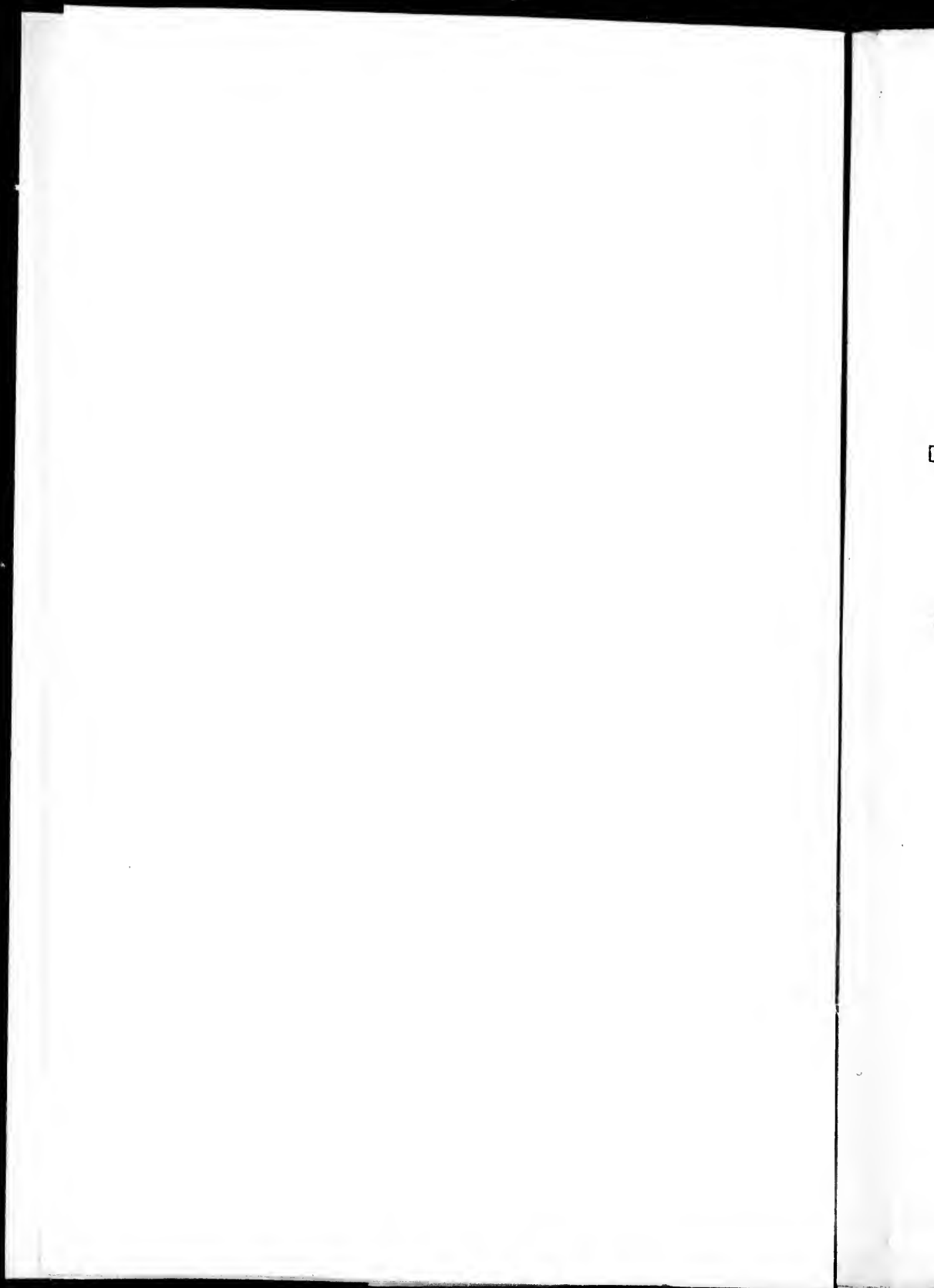
ire
détails
es du
modifier
er une
filmage

ées

re

y errata
ad to

nt
ne pelure,
çon à



Secretary's Office

THE

NEWFOUNDLAND

A L M A N A C K ,

FOR THE YEAR OF OUR LORD

1862,

[BEING THE SECOND AFTER BISSEXTILE, OR LEAP YEAR, AND THE
LATER PART OF THE TWENTY-FIFTH AND THE BEGINNING
OF THE TWENTY-SIXTH YEAR OF THE REIGN OF
HER MAJESTY QUEEN VICTORIA.]

CONTAINING

**ASTRONOMICAL, STATISTICAL, COMMER-
CIAL, LOCAL;**

AND

GENERAL INFORMATION,

DERIVED FROM THE MOST AUTHENTIC SOURCES.

COMPILED, PRINTED AND PUBLISHED BY

Joseph Woods.

ST. JOHN'S, NEWFOUNDLAND,

MDCCCLXI.

RARE
 AY
 420
 N49N4
 1862

CONTENTS.

Astronomical Phenomena for the year 1862	4
Attornies at Law	34
Abstract from Newfoundland Census of 1857	50
Board of Revenue	23
Board of Works	23
Boards of Road Commissioners	24
Board of Health	34
Barristers and Attornies of Supreme Court	34
Barristers and Attornies, Harbor Grace	34
Banks—Savings' Bank	31
Union Bank of Newfoundland	44
Commercial Bank of Newfoundland	44
Benevolent Institutions, Charitable Societies, &c.	54
Calendar, Chronological Eras, &c.	6
Calendar Pages—Moon's Phases, Sun's Rising and Setting at St. John's every day in the year; Sun's Declination, Equation of Time, High Water at St. John's every Morning and Afternoon, Memoranda, &c.	9—20
Colonial Secretary's Office	22
Customs Department	23
Court Houses and Keepers	26
Commissioners of Streets (Conception Bay)	26
Commissioners of the Poor	32
Commissioners for Reduction of Public Debt	32
Commissioners of Pilots and Rates of Pilotage	32
Commissioners of Wrecked Property	33
Clerks of the Peace	36
Coroners	36
Commercial Schools	37
Colonial and Continental Church Society Schools	37
Convents	42
Clergy of different Denominations	40
Chamber of Commerce	44
Commissioners of Affidavits, &c. in S. and C.C Courts	56
Difference of Time at various places on the Globe as com- pared with St. John's	5
District Surgeons	26
Eclipses for the year 1862	4
Equinoxes, Length of Seasons, &c.	8
Executive Council	21
Fixed and Moveable Festivals, Anniversaries, &c.	6
Financial Secretary's Office	23
Foreign Consuls	45
Governor, Commander-in-Chief, and Vice-Admiral of Newfoundland	21
Gaols and Gaolers	26
Grammar Schools	36

 ASTRONOMICAL PHENOMENA,

ECLIPSES FOR THE YEAR 1862.

There will be *Five* Eclipses this year,—*three* of the *SUN*, and *two* of the *MOON*, viz :—

I.—*A Total Eclipse of the Moon*, June 12, visible in this Island :—

First contact with Penumbra	0h 14m	Morning	} St John's, M. S. time.
First contact with Shadow	1h 10m	do	
Beginning of Total Phase	2h 17m	do	
Middle of Eclipse	2h 48m	do	
End of Total Phase	3h 20m	do	
Last contact with Shadow	4h 27m	do	
Last contact with Penumbra	5h 23m	do	

Magnitude of Eclipse (Moon's Diameter=1) 1.194.

First contact with Shadow occurs at 67° from the Northernmost point of the Moon's Limb towards the East.

II.—*Partial Eclipse of the Sun*, June 27, invisible in this Island.

III.—*Partial Eclipse of the Sun*, November 21, invisible in this Island.

IV.—*Total Eclipse of the Moon*, December 6, visible in this Island :—

First contact with Penumbra	1h 0m	Morning	} St John's, M. S. time.
First contact with Shadow	2h 13m	do	
Beginning of Total Phase	3h 22m	do	
Middle of Eclipse	4h 8m	do	
End of Total Phase	4h 43m	do	
Last contact with Shadow	6h 2m	do	
Last contact with Penumbra	7h 15m	do	

Magnitude of Eclipse (Moon's diameter=1) 1.409.

V.—*Partial Eclipse of the Sun*, December 21, invisible in this Island.

 LATITUDE AND LONGITUDE OF PLACES ON THE
 COAST OF NEWFOUNDLAND.

		Lat. N.	Lon. W.
Cape Ray	47 37 3	59 17 2
Cape St. George	48 28 54	59 14 26
Cow Head	49 55 12	57 51 16
Point Riche	50 41 30	57 24 0
Point Ferolle	51 1 9	57 5 47
Cape Norman	51 37 0	55 48 0
Quirpon Island—Cape Bauld		51 38 0	55 30 0
Groais Island—North Point		50 59 0	55 27 0
Canada Head	50 41 0	56 2 0
Cape St. John—North Bill....		49 59 30	55 25 0
Toulinguet Harbor—Harbor Rock		49 39 28	54 41 20

	Lat. N.	Lon. W.
Cape Fogo	49 40 0	53 54 0
Offer Wadham	49 37 30	53 40 0
Funk Island	49 44 21	53 7 20
Cape Freels—South Bill	49 18 40	53 24 0
Greenspond Island	49 7 30	53 31 0
Offer Gooseberry Island	48 53 30	53 27 0
Cape Bonavista—Gull Island	48 42 40	52 59 20
Catalina Harbor—North Head	48 32 28	52 56 6
Horsechops	48 21 30	53 8 30
Trinity Harbor, entrance	48 21 30	53 16 50
Bonaventure Head	48 16 30	53 18 10
Bacalieu Island—North Point	48 9 0	52 44 46
Cape St. Francis	47 48 4	52 43 41
Cape Spear	47 30 53	52 33 30
Cape Broyle—North Point.....	47 3 52	52 47 27
Cape Bolland	46 46 46	52 53 20
Cape Race	46 39 44	52 59 10
Virgin Rocks	46 26 33	50 56 35
Cape Pine	46 37 14	53 30 0
Cape St. Mary	46 49 25	54 8 45
Placentia Harbor	47 15 11	53 55 3
Mortier Rocks mid.	47 2 0	54 52 0
Cape Chapeaurouge	46 54 19	55 20 30
Point May	46 54 0	55 59 0
St. Peter's Island Light House	46 46 52	56 8 44
Cape Miquelon	47 8 11	56 19 30

A TABLE

Shewing the Difference of Time at various places on the Globe, as compared with St. John's, Newfoundland.

When it is NOON at St. John's it is

West Longitude	{	18	minutes past	11	o'clock	A. M.	at	Charlottetown, P. E. I.
		17	do	11	do	do	do	Halifax
		13	do	11	do	do	do	St. John, N. B.
		50	do	10	do	do	do	Portland, Me.
		47	do	10	do	do	do	Boston, Mass.
		46	do	10	do	do	do	Quebec
		34	do	10	do	do	do	New York
		30	do	10	do	do	do	Philadelphia
		23	do	10	do	do	do	Washington
		21	do	7	do	do	do	St. Francisco, California
14	do	7	do	do	do	St. Juan, Vancouver's Is.		
East Long.	{	30	do	3		P. M.		Greenwich
		20	do	4		do		Rome
		26	do	5		do		Constantinople
		52	do	5		do		Jerusalem
		50	do	8		do		Madras, E. I.
3	do	11		do		Camton		

CALENDAR.

Golden Number 1	Dominical Letter E.
Epact 30	Roman Indiction 5
Solar Cycle 23	Julian Period 6575

CHRONOLOGICAL ERAS.

The Year 5623 of the Jewish Era, commences September 25, 1862.

Ramadan (Month of Abstinence observed by the Turks) commences on March 2, 1862.

The Year 1279 of the Mohammedan Era, commences June 29, 1862.

FIXED AND MOVEABLE FESTIVALS, ANNIVERSARIES, &c

Epiphany	January 6	Ascension Day—	May 29
Septuagesima Sunday	February 16	Pentecost—Whit Sunday	June 8
St. David	March 1	Trinity Sunday	do 15
Shrove Sunday	do 2	Corpus Christi	do 19
Ash Wednesday	do 5	Accession Queen Victoria	do 20
First Sunday in Lent	do 9	Proclamation	do 21
St. Patrik	do 17	St. John Baptist—Midsummer	24
Annunciation—Lady Day	do 25	Birth of Prince Consort	August 26
Palm Sunday	April 13	Michaelmas Day	September 29
Good Friday	do 18	Birth Prince of Wales	Novem. 9
Easter Sunday	do 20	St. Andrew	do 30
St. George	do 23	1st Sunday in Advent	do 30
Low Sunday	do 27	St. Thomas	December 21
Birth Queen Victoria	May 24	Christmas Day	do 25
Rogation Sunday	do 25		

NOTE.—The Tide Tables (in the Calendar pages) may be rendered applicable to various other places on the coast, by simply adding or subtracting as the case may be, the difference between the times of High Water on the Full and Change of the Moon at St. John's, and the time of the full tide at any other harbor; for example, to find the time of High Water at any of the principal harbors of Conception Bay, add 45 minutes to the time at which it will be High Water at St. John's; for Placentia Bay, add 2 hours; for St. Peter's, 1h. 50m.; for Ferrolle, on the French Shore, 4 hours, &c.—See Table LVII. of Norie's Epitome.

ST. JOHN'S.

True Latitude of Church Hill	47° 34' 30 North.
Longitude (West of Greenwich)	52 44 0 West.

THE WEATHER.

Result of Meteorological Observations for the Years, 1858, 1859, 1860, taken from the Colonial Building, St. John's, Newfoundland, by E. M. J. DELANEY, Observer.—Lat. N. 47° 34' 30"—Long. W. 52° 39' 45"—170 feet above Sea level.

1858.

	Inches.	Date.
Max. hight of Barometer corrected to sea level	30.33	January 16th
Min. do. do. . . .	28.70	March 20th
Mean do. do. . . .	29.51	
Max. height of Thermometer	84°	August 12th
Min. do. do. . . .	-2°	February 11th
Mean temp. for year	41°	
Quantity of Rain including melted Snow in inches	50.860	the year
Prevailing Winds	NW.	
Rain fell on 98 days; Fog 66 days.		

1859.

Max. height of Bar. corrected to sea level	30.56	January 25th
Min. do. do. . . .	28.72	December 5th
Mean do. do. . . .	29.79	
Max. height of Ther. . . .	96°	July 13th
Min. do. do. . . .	-8°	March 3rd
Mean temp. for year	44°	
Quantity of Rain including melted Snow in inches	64.220	the year
Prevailing Winds	NNW. & SSW.	
Rain fell on 110 days; Snow on 54; Fog 88; Thunder and Lightning on 6		

1860.

Max. height of Bar. corrected to sea level	30.36	February 29th
Min. do. do. . . .	29.56	do 11th
Mean do. do. . . .	29.60	
Max. height of Ther. . . .	80°	Aug. 11th & 15th
Min. do. do. . . .	-11½°	February 3rd
Mean temp. for year	41°	
Quantity of Rain and melted Snow in inches	82.040	the year
Prevailing Winds	NW. & SSW.	
Rain fell on 117 days; Snow on 43; Fog 109; Thunder and Lightning on 5		

EQUINOXES, &c.

	d.	h.	m.
Vernal Equinox	March 20	10	52 m.
Summer Solstice	June 21	7	39 m.
Autumnal Equinox	Sept. 22	9	52 e.
Winter Solstice	Dec. 21	3	39 e.

LENGTH OF SEASONS, &c.

	d.	h.	m.
Sun in Winter signs	89	1 9
Sun in Spring signs	92	20 35
Sun in Summer signs	93	14 13
Sun in Autumnal signs	89	17 47
Tropical Year	365	5 44
Sun North of the Equator	186	10 48
Sun South of the Equator	178	18 56
Difference	7	15 52

TO THE PUBLIC.

IN presenting to the public of Newfoundland the ALMANACK FOR THE YEAR 1862, the Compiler would make suitable acknowledgments for the favorable consideration extended to previous publications of the work.

The undersigned is under renewed obligations to his talented friend, W. C. St. JOHN, Esq., of Boston, for the Astronomical and other scientific information which will be found in the introductory and Calendar pages; he is also indebted to E. M. J. DELANEY, Esq., C. E., of the Board of Works Department, for the Meteorological Observations for the years 1858, 1859, and 1860; to the Heads of Public Departments, and others, he has to express his thanks for the readiness at all times manifested to furnish the information required.

JOSEPH WOODS.

St. John's, November, 1861.

January, 31 Days.

MOON'S PHASES.

FIRST QUARTER 7th day, 7h, 16m, Evening.
 FULL MOON..... 15th day, 10h, 25m, Evening.
 LAST QUARTER..... 22nd day, 3h, 7m, Morning.
 NEW MOON 29th day, 11h, 20m, Evening.

Day of W.	Day of M.	Sun		G. app. time.		High		Memoranda.
		rises at St. John's.	Sun sets at St. John's.	Sun's Decli- nation.	Equa. of time. add.	Water at St. John's, 1st tide.	2nd tide.	
		H. M.	H. M.	o ' M. S.	H. M.	H. M.		
W	1	7 55	4 13	S 23 1	3 52	8 37	21 2	First Local Legisla- ture met, 1833.
Th.	2	7 54	4 14	22 56	4 20	9 25	21 48	
F	3	7 54	4 15	22 50	4 48	10 10	22 30	Quebec founded, 1608
S	4	7 54	4 16	22 44	5 16	10 50	23 12	
Su.	5	7 54	4 17	22 37	5 43	11 32	23 52	Epiphany.
M	6	7 54	4 19	22 30	6 9	0 12	12 30	
T	7	7 53	4 20	22 23	6 36	0 50	13 11	Catholic Cathedral opened, 1850.
W	8	7 53	4 21	22 15	7 1	1 32	13 56	
Th.	9	7 53	4 22	22 7	7 26	2 26	15 1	1st Sun. after Epiphany
F	10	7 52	4 24	21 58	7 51	3 36	16 12	
S	11	7 52	4 25	21 49	8 15	4 48	17 25	Amalgam'd. Assembly closed, 1847.
Su.	12	7 51	4 26	21 39	8 38	5 40	18 0	
M	13	7 51	4 27	21 29	9 1	6 32	18 57	Franklin born, 1706.
T	14	7 50	4 29	21 18	9 23	7 18	19 40	
W	15	7 50	4 30	21 8	9 44	8 0	20 19	2d Sun. after Epiphany
Th.	16	7 49	4 31	20 56	10 5	8 39	20 58	
F	17	7 48	4 33	20 45	10 24	9 15	21 33	Amer'n. Independence acknowledged, 1783
S	18	7 47	4 34	20 33	10 44	9 50	22 7	
Su.	19	7 46	4 36	20 20	11 2	10 26	22 44	[ried, 1858 Princess Royal mar- ried, 1858
M	20	7 45	4 37	20 7	11 20	11 2	23 21	
T	21	7 44	4 38	19 54	11 37	11 41	23 59	3d Sun. after Epiphany
W	22	7 44	4 40	19 40	11 53	0 21	12 44	
Th.	23	7 43	4 42	19 26	12 9	1 7	13 33	Col. Building opened, 1850.
F	24	7 42	4 43	19 12	12 24	2 4	14 38	
S	25	7 41	4 45	18 57	12 38	3 20	16 3	[opened, 1860. 1st Sess. 7th Gen. As.
Su.	26	7 40	4 46	18 42	12 51	4 47	17 32	
M	27	7 38	4 48	18 27	13 3	6 0	18 12	
T	28	7 37	4 49	18 11	13 15	6 44	19 14	
W	29	7 36	4 51	17 55	13 26	7 41	20 7	
Th.	30	7 35	4 52	17 39	13 36	8 29	20 51	
F	31	7 33	4 54	S 17 23	13 45	9 13	21 32	

JANUARY.—January (Latin, *Januarius*) was so called by the Romans from Janus, one of their superior deities, to whom the first day of the year was sacred, and through whom they offered their prayers to the gods : hence the name is used to signify gate of the year. Janus was represented with two faces : one old and wrinkled, and looking backward ; the other face young and smiling, and looking forward.

February, 28 Days.

MOON'S PHASES.

FIRST QUARTER	6th day,	4h, 41m, Evening.
FULL MOON	14th day,	1h, 36m, Evening.
LAST QUARTER.....	21st day,	10h, 41m, Morning.
NEW MOON	28th day,	1h, 19m, Evening.

Day of W.	Day of M.	Sun		G. app. time		High		Memoranda.
		rises	sets	Sun's	Equa	Water at		
		at St. John's.		Declination.	tion of time.	1st tide.	2nd tide.	
		H. M.	H. M.	o ' M. s.	H. M.	H. M.		
S	1	7 32	4 55	S 17 6	13 54	9 51	22 8	Sebast. docks des. 1856
Su.	2	7 31	4 57	16 48	14 1	10 27	22 45	4th Sun. after Epiph-
M	3	7 29	4 59	16 31	14 8	11 1	23 17	any—Candiemas Day
T	4	7 28	5 0	16 13	14 14	11 34	23 51	
W	5	7 27	5 2	15 55	14 19	0 8	12 26	
Th.	6	7 25	5 3	15 37	14 23	0 44	13 3	Fishery Convention
F	7	7 24	5 5	15 18	14 26	1 25	13 53	laid before Legis-
S	8	7 22	5 7	14 59	14 29	2 26	15 7	lature, 1857.
Su.	9	7 20	5 8	14 40	14 30	3 47	16 29	5th Sun. after Epiphany
M	10	7 19	5 10	14 20	14 31	5 14	17 53	Qn. Vic. married, 1840
T	11	7 17	5 11	14 1	14 31	6 20	18 28	
W	12	7 16	5 13	13 41	14 31	6 55	19 17	
Th.	13	7 14	5 15	13 21	14 29	7 39	20 1	
F	14	7 13	5 16	13 0	14 27	8 18	20 36	Valentine's Day.
S	15	7 11	5 18	12 40	14 24	8 53	21 12	
Su.	16	7 9	5 19	12 19	14 21	9 29	21 46	Septuagesima
M	17	7 7	5 21	11 58	14 16	10 42	22 22	B. I. Soc'y founded 1806
T	18	7 6	5 22	11 37	14 11	10 41	22 59	Luther died, 1546
W	19	7 4	5 24	11 16	14 5	11 18	23 39	
Th.	20	7 2	5 26	10 54	13 59	11 59	12 19	
F	21	7 0	5 27	10 33	13 52	0 44	13 10	
S	22	7 59	5 29	10 11	13 44	1 42	14 19	Washington born, 1732
Su.	23	7 57	5 20	9 49	13 36	3 4	15 51	Sexagesima
M	24	7 55	5 32	9 27	13 27	4 40	17 27	Napoleon escaped from
T	25	7 52	5 34	9 5	13 18	5 40	18 7	Elba, 1815
W	26	7 51	5 35	8 42	13 8	6 39	19 6	
Th.	27	7 49	5 36	8 20	12 58	7 31	19 55	
F	28	7 48	5 38	S 7 57	12 46	8 15	20 34	

FEBRUARY.—February (Latin, *Februarius*) received its name from Februlia, a feast of sacrifices and purifications held by the Romans in this month, in the vain hope of being cleansed from the sins of the whole year. It corresponds to ADAR (Ezra vi. 15), the sixth civil, and twelfth sacred month of the Jews. By the Saxons it was called *Sproutkete*, as cabbages begin to sprout now; and also *Sol-monath*, the month when pancakes were offered to Sol, or the Sun.

March, 31 Days.

MOON'S PHASES.

FIRST QUARTER 8th day, 1h, 51m, Evening.
 FULL MOON 16th day, 1h, 47m, Morning.
 LAST QUARTER 22nd day, 6h, 19m, Evening.
 NEW MOON 30th day, 4h, 15m, Morning.

Day of W.	Day of M.	Sun		G. app. time.		High		Memoranda.
		rises	Sets	Sun's Declination.	Equa. of time.	Water at St. John's, 1st tide.	2nd tide.	
		H. M.	H. M.	o ' M. S.	H. M.	H. M.		
S	1	6 45	5 39	S 7 35	12 35	8 53	21 10	St. David
Su.	2	6 44	5 41	7 12	12 23	9 26	21 42	Shrove Sun. J. Wesley
M	3	6 42	5 42	6 49	12 10	9 59	22 15	died, 1791.
T	4	6 40	5 44	6 26	11 57	10 29	22 45	B.&F. Bible Soc'y. est'd.
W	5	6 38	5 45	6 3	11 44	11 0	23 15	Ash Wednesday. [1804
Th.	6	6 36	5 47	5 39	11 30	11 31	23 47	
F	7	6 34	5 48	5 16	11 15	0 6	12 26	7th Gen. Ass. dissolved
S	8	6 32	5 50	4 53	11 0	0 47	13 10	by Proclamation, 1861
Su.	9	6 30	5 51	4 29	10 45	1 36	14 12	1st Sun. in Lent
M	10	6 28	5 53	4 6	10 30	2 55	15 40	New South Wales dis-
T	11	6 26	5 54	3 42	10 14	4 25	17 7	covered, 1787.
W	12	6 24	5 56	3 19	9 57	5 46	18 0	
Th.	13	6 22	5 57	2 55	9 41	6 17	18 43	
F	14	6 20	5 58	2 32	9 24	7 7	19 26	
S	15	6 18	5 59	2 8	9 7	7 48	20 8	
Su.	16	6 16	6 1	1 44	8 49	8 24	20 43	2nd Sun. in Lent
M	17	6 14	6 3	1 20	8 32	9 1	21 18	St. Patrick
T	18	6 12	6 4	0 57	8 14	9 39	21 57	
W	19	6 10	6 6	0 33	7 56	10 18	22 36	Sir J. Newton died,
Th.	20	6 8	6 7	S 0 9	7 38	10 56	23 19	1727
F	21	6 6	6 8	N 0 14	7 20	11 42	12 6	
S	22	6 4	6 10	0 38	7 2	0 32	13 2	
Su.	23	6 2	6 11	1 2	6 43	1 34	14 11	3rd Sun. in Lent
M	24	6 0	6 13	1 25	6 25	2 57	15 44	Qn. Eliz'th died, 1603
T	25	5 58	6 14	1 49	6 6	4 29	17 14	Annunciation
W	26	5 56	6 16	2 12	5 48	5 50	18 10	
Th.	27	5 54	6 17	2 36	5 30	6 20	18 48	
F	28	5 52	6 18	2 59	5 11	7 10	19 32	Allies declare War
S	29	5 50	6 20	3 23	4 53	7 50	20 8	against Russia, 1854
Su.	30	5 48	6 21	3 46	4 34	8 24	20 43	4th Sun. in Lent
M	31	5 46	6 23	N 4 9	4 16	8 59	21 15	

MARCH.—March (Latin, *Martius*) was so named by the Romans in honor of Mars, their god of war. In this month the Gothic tribes went out on warlike expeditions. It answers to NISAN, or ABIB (Neh. ii. 1; Deut. xvi. 1), the seventh of the civil, and the first of the sacred year of the Jews. By the Saxons it was named *Hlyd-monath*, the loud or windy month.

April, 30 Days.

MOON'S PHASES.

FIRST QUARTER 7th day, 8h, 42m, Morning.
 FULL MOON 14th day, 11h, 32m, Morning.
 LAST QUARTER 21st day, 2h, 33m, Morning.
 NEW MOON 28th day, 7h, 56m, Evening.

Day of W.	Day of M.	Sun		G. app. time.		High		Memoranda.
		Sun rises at St. John's.	Sun sets at St. John's.	Sun's Declination.	Equation of time.	Water at St. John's,		
						1st tide.	2nd tide.	
		H. M.	H. M.	o ' M. S.	H. M.	H. M.		
T	1	5 44	6 24	N 4 32	3 58	9 32	21 46	
W	2	5 42	6 25	4 56	3 40	10 12	22 17	Mutiny at Meerut, 1857
Th.	3	5 40	6 27	5 19	3 22	10 32	22 49	
F	4	5 38	6 28	5 41	3 4	11 5	23 21	
S	5	5 36	6 30	6 4	2 47	11 38	23 57	
Su.	6	5 34	6 31	6 27	2 29	0 18	12 42	5th Sun. in Lent
M	7	5 32	6 32	6 50	2 12	1 8	13 41	Prince Leopold born, 1853.
T	8	5 31	6 33	7 12	1 55	2 19	15 1	
W	9	5 28	6 35	7 34	1 38	3 42	16 21	
Th.	10	5 26	6 36	7 57	1 21	4 59	17 32	
F	11	5 24	6 38	8 19	1 5	5 40	18 0	London Bridge burnt, 1759
S	12	5 22	6 39	8 41	0 49	6 25	18 47	
Su.	13	5 20	6 41	9 3	0 33	7 10	19 31	Palm Sunday. Catholic Emancipation, 1829
M	14	5 18	6 42	9 24	0 17	7 51	20 10	[land, 1856
T	15	5 16	6 44	9 46	0 2	8 30	20 52	Nap. III. visited Eng-
W	16	5 15	6 45	10 7	0 13	9 14	21 36	Franklin died, 1790
Th.	17	5 13	6 46	10 28	0 27	9 57	22 20	GOOD FRIDAY
F	18	5 11	6 48	10 49	0 41	10 43	23 8	
S	19	5 9	6 49	11 10	0 55	11 33	23 59	
Su.	20	5 7	6 50	11 31	1 8	0 25	12 56	EASTER SUNDAY
M	21	5 5	6 52	11 51	1 21	1 29	14 4	
T	22	5 4	6 53	12 12	1 33	2 46	15 21	
W	23	5 2	6 54	12 32	1 45	4 9	16 45	St. George
Th.	24	5 0	6 56	12 52	1 56	5 20	17 48	Dept. of Gov. Darling, 1857
F	25	4 58	6 57	13 11	2 7	6 0	18 14	
S	26	4 56	6 59	13 31	2 18	6 38	19 0	Nom. for Gen. Ele., 1861
Su.	27	4 55	7 0	13 50	2 27	7 20	19 40	Low Sunday. Peace ratified at Paris, 1857
M	28	4 53	7 2	14 9	2 37	7 57	20 14	
T	29	4 51	7 3	14 28	2 46	8 31	20 47	
W	30	4 50	7 4	N 14 46	2 54	9 3	21 19	Gov. Darling ar'd, 1855

Equation of time to be added to apparent time to the 15th, and to be subtracted the remainder of the month.

APRIL.—April (Latin, *Aprilis*) is so called from *aperire*, 'to open, in allusion to the opening of the young buds of trees and flowers, and the general development of vegetation at this season.

May, 31 Days.

MOON'S PHASES.

FIRST QUARTER 6th day, 11h, 53m, Evening.
 FULL MOON..... 13th day, 7h, 30m, Evening.
 LAST QUARTER 20th day, 0h, 8m, Evening.
 NEW MOON 28th day, 11h, 55m, Morning.

Day of W.	Day of M.	Sun		G. app. time.		High		Memoranda.
		rises	Sun sets	Sun's Declination.	Equa of time.	Water at St. John's,	1st 2nd tide.	
		H. M.	H. M.	o ' M. S.		H. M.	H. M.	
Th.	1	4 48	7 6	N 15 4	3 2	9 36	21 52	
F	2	4 47	7 7	15 22	3 9	10 9	22 6	General Election, 1861
S	3	4 45	7 8	15 40	3 16	10 42	23 0	
Su.	4	4 43	7 10	15 58	3 22	11 18	23 37	2d Sun. after Easter
M	5	4 42	7 11	16 15	3 27	11 57	12 20	Napoleon died, 1821
T	6	4 40	7 12	16 32	3 33	0 44	13 13	Peace proclaimed, 1856
W	7	4 39	7 14	16 49	3 37	1 43	14 18	
Th.	8	4 38	7 15	17 5	3 41	2 58	15 34	
F	9	4 36	7 16	17 21	3 45	4 7	16 41	
S	10	4 35	7 18	17 37	3 48	5 12	17 42	Mutiny at Meerut, 1857
Su.	11	4 33	7 19	17 53	3 50	6 0	18 7	3d Sun. after Easter
M	12	4 32	7 20	18 8	3 52	6 31	18 54	General Election, 1855
T	13	4 31	7 21	18 23	3 53	7 19	19 43	1st Ses. 8th Gen. Assem.
W	14	4 29	7 23	18 38	3 53	8 6	20 31	opened, 1861. Riots
Th.	15	4 28	7 24	18 52	3 53	8 55	21 22	in Water-str. Military
F	16	4 27	7 25	19 6	3 53	9 44	22 8	called out.
S	17	4 26	7 27	19 20	3 52	10 31	22 58	
Su.	18	4 24	7 28	19 33	3 50	11 23	23 50	4th Sun. af. Easter. Na-
M	19	4 23	7 29	19 46	3 48	0 18	12 45	poleon I. pro. Em, 1804
T	20	4 22	7 30	19 59	3 45	1 15	13 46	Foundation Stone Ro.
W	21	4 21	7 31	20 11	3 42	2 20	14 56	Catholic Cathedral
Th.	22	4 21	7 32	20 23	3 38	3 29	16 0	laid, 1841
F	23	4 19	7 33	20 35	3 33	4 29	17 0	
S	24	4 18	7 34	20 46	3 28	5 30	17 59	Qn. Vict. born, 1819
Su.	25	4 17	7 35	20 57	3 23	6 0	18 25	Rogation Sunday
M	26	4 16	7 36	21 8	3 17	6 47	19 7	
T	27	4 15	7 38	21 18	3 10	7 25	19 49	
W	28	4 14	7 40	21 28	3 3	8 8	20 26	
Th.	29	4 13	7 41	21 37	2 55	8 43	21 1	Ascension Day
F	30	4 13	7 41	21 47	2 47	9 18	21 35	
S	31	4 12	7 42	N 21 55	2 39	9 52	22 10	Dr Chalmers died, 1847

MAY.—May (Latin, *Maius*) is so denominated from Maia, the most beautiful of the constellation Pleiades, and the fabled mother of Mercury, one of the false deities. The corresponding Jewish month was SIVAN (Esth. viii. 9), the ninth of the civil, and third of the sacred year.

June, 30 Days.

MOON'S PHASES.

FIRST QUARTER 5th day, 11h, 12m, Morning.
 FULL MOON 12th day, 2h, 47m, Morning.
 LAST QUARTER..... 18th day, 11h, 42m, Evening.
 NEW MOON..... 27th day, 2h, 23m, Morning.

Day of W.	Day of M.	Sun		G. app. time.		High		Memoranda.
		rises	sets	Sun's Declination.	Equation of time	Water at St. John's, 1st 2nd tide.		
		H. M.	H. M.	o ' N	M. S.	H. M.	H. M.	
Su.	1	4 12	7 43	22 4	2 30	10 27	22 44	Sunday after Ascension
M	2	4 12	7 44	22 12	2 21	11 2	23 20	
T	3	4 11	7 45	22 19	2 12	11 40	12 2	Geo. III. born, 1738
W	4	4 10	7 45	22 26	2 2	0 24	12 48	Battle of Magenta, 1859
Th.	5	4 10	7 46	22 33	1 51	1 14	13 42	
F	6	4 10	7 47	22 40	1 41	2 11	14 47	
S	7	4 9	7 48	22 46	1 30	3 23	15 53	[nerman arr'd., 1857
Su.	8	4 9	7 48	22 51	1 19	4 23	16 55	Pentecost. Gov. Ban-
M	9	4 9	7 49	22 57	1 8	5 26	17 58	Great Fire, St. John's, 1846
T	10	4 8	7 50	23 1	0 56	6 0	18 28	
W	11	4 8	7 51	23 6	0 14	6 56	19 24	St. Barnabas. Sir John Franklin died, 1847
Th.	12	4 8	7 51	23 10	0 32	7 52	20 18	
F	13	4 7	7 52	23 14	0 20	8 45	21 10	
S	14	4 7	7 52	23 17	0 8	9 35	21 59	
Su.	15	4 6	7 53	23 20	0 51	10 24	22 48	Trinity Sun. Magna Charta signed, 1215
M	16	4 6	7 53	23 22	0 18	11 12	23 30	J. Wesley born, 1703
T	17	4 6	7 54	23 24	0 31	11 59	12 25	Battle Waterloo, 1815
W	18	4 5	7 54	23 25	0 43	0 50	13 14	Corpus Christi
Th.	19	4 6	7 55	23 27	0 56	1 38	14 5	Acc. Q. Victoria, 1837
F	20	4 7	7 55	23 27	1 9	2 36	15 9	Proclamation
S	21	4 7	7 55	23 28	1 22	3 39	16 10	1st Sun. after Trinity
Su.	22	4 8	7 56	23 27	1 36	4 42	17 14	
M	23	4 8	7 56	23 27	1 49	5 46	18 0	
T	24	4 9	7 56	23 26	2 1	6 14	18 41	St. John—Midsummer
W	25	4 9	7 56	23 25	2 14	7 4	19 25	24—Battle Solferino, 1859
Th.	26	4 10	7 56	23 23	2 27	7 48	20 7	
F	27	4 10	7 56	23 21	2 40	8 25	20 43	1st Ses. 8th Gen. As. pro-
S	28	4 10	7 56	23 18	2 52	9 2	21 19	rogued by pro. 1861
Su.	29	4 11	7 56	23 15	3 4	9 37	21 54	2d Sunday after Trinity
M	30	4 11	7 56	N 23 12	3 17	10 10	22 28	28—Cor. Q. Viet, 1838

Equation of time to be subtracted from apparent time to the 14th, and to be added the remainder of the month.

JUNE.—June (Latin, *Junius*), was so named from Juno, one of the fabled Goddesses of the Romans. It answers to the Jewish TAMUZ, the tenth of their civil, and fourth of their sacred year.

July, 31 Days.

MOON'S PHASES.

FIRST QUARTER 4th day, 7h, 20m, Evening.
 FULL MOON 11th day, 10h, 8m, Morning.
 LAST QUARTER 18th day, 1h, 43m, Evening.
 NEW MOON 26th day, 5h, 34m, Evening.

Day of W.	Day of M.	Sun		G. app. time.		High		Memoranda.
		rises at St. John's.	Sun sets at St. John's.	Sun's Decli- nation.	Equa. of time. add.	Water at St. John's, 1st 2nd tide. tide.		
		H. M.	H. M.	o ' N	M. S.	H. M.	H. M.	
T	1	4 12	7 55	23 8	3 28	10 45	23 4	
W	2	4 13	7 55	23 4	3 40	11 23	23 43	
Th.	3	4 13	7 57	22 59	3 51	0 2	12 25	
F	4	4 14	7 54	22 54	4 2	0 48	13 12	Am. Ind., 1776. Sir H.
S	5	4 15	7 54	22 49	4 13	1 37	14 5	Laurence kd. at Luckno
Su.	6	4 15	7 53	22 43	4 23	2 35	15 11	3d Sun. after Trin. [1857
M	7	4 16	7 53	22 37	4 33	3 48	16 24	Free Trade Act passed,
T	8	4 17	7 53	22 30	4 42	5 1	17 37	1855
W	9	4 18	7 52	22 23	4 51	6 0	18 11	
Th.	10	4 19	7 51	22 16	5 0	6 44	19 13	Cape Ray and C. Breton
F	11	4 19	7 51	22 8	5 8	7 43	20 9	Elec. Cable laid, 1856
S	12	4 21	7 50	22 0	5 16	8 36	21 2	Brit. evac. Crimea, 1856
Su.	13	4 21	7 50	21 52	5 24	9 26	21 49	4th Sun. after Trinity
M	14	4 22	7 49	21 43	5 30	10 11	22 31	
T	15	4 23	7 48	21 33	5 37	10 53	23 15	St. Swithin
W	16	4 24	7 47	21 24	5 43	11 35	23 55	1st French Rev., 1789
Th.	17	4 25	7 46	21 14	5 48	0 15	12 35	Havelock retakes
F	18	4 26	7 45	21 3	5 53	0 56	13 17	Cawnpore, 1857
S	19	4 27	7 44	20 53	5 58	1 41	14 7	
Su.	20	4 28	7 43	20 42	6 1	2 39	15 13	5th Sun. after Trinity
M	21	4 29	7 42	20 30	6 5	3 49	16 25	
T	22	4 30	7 41	20 19	6 8	5 3	17 39	[St John's, 1860
W	23	4 32	7 40	20 7	6 10	6 0	18 10	Prince Wales arrives at
Th.	24	4 33	7 39	19 54	6 12	6 38	19 2	Gibraltar taken, 1804
F	25	4 34	7 38	19 41	6 13	7 25	19 46	St James [Sydney 1860
S	26	4 35	7 37	19 28	6 13	8 7	20 25	Prince Wales leaves for
Su.	27	4 36	7 36	19 15	6 13	8 42	20 59	6th Sun. after Trinity
M	28	4 37	7 35	19 1	6 13	9 17	21 34	
T	29	4 38	7 34	18 47	6 12	9 50	22 6	French Revolu., 1830
W	30	4 39	7 32	18 33	6 10	10 23	22 41	Cook's 1st Voyage, 1768
Th.	31	4 41	7 31	N 18 18	6 7	11 0	23 18	

JULY.—July (Latin, *Julius*), was originally called Quintilis, being the fifth month of the Roman calendar. Marc Antony designated it Julius, in honor of Caius Julius Cæsar, dictator of Rome, who was born in it, and who reformed the calendar. It answers to AB, the eleventh month of the Jewish civil year, and the fifth of their sacred year.

August, 31 Days.

MOON'S PHASES.

FIRST QUARTER 3rd day, 1h, 26m, Morning.
 FULL MOON 9th day, 5h, 39m, Evening.
 LAST QUARTER..... 17th day, 6h, 17m, Morning.
 NEW MOON ... 25th day, 6h, 10m, Morning.

Day of W.	Day of M.	Sun		G. app. time.		High		Memoranda.
		rises	Sun sets	Sun's Declination.	Equa. of time.	Water at St. John's,		
		at St. John's.				1st tide.	2nd tide.	
		H. M.	H. M.	o ' N	M. S.	H. M.	H. M.	
F	1	4 42	7 29	18 3	6 4	11 27	23 56	Negro Emancipation, 1834
S	2	4 44	7 28	17 48	6 0	0 18	12 41	
Su.	3	4 45	7 27	17 32	5 56	1 7	13 34	7th Sun. after Trinity
M	4	4 46	7 25	17 17	5 51	2 4	14 41	[laid, 1858
T	5	4 48	7 24	17 1	5 45	3 24	16 8	Atlantic Electric Cable
W	6	4 49	7 22	16 44	5 39	4 51	17 35	Prince Alfred born 1844
Th.	7	4 50	7 21	16 28	5 32	6 0	18 11	
F	8	4 51	7 19	16 11	5 25	6 44	19 12	Canning died, 1827
S	9	4 53	7 18	15 53	5 17	7 40	20 3	
Su.	10	4 54	7 16	15 36	5 8	8 26	20 48	8th Sun. after Trinity
M	11	4 55	7 15	15 18	4 59	9 8	21 29	
T	12	4 57	7 13	15 0	4 49	9 48	22 7	
W	13	4 58	7 11	14 42	4 39	10 27	22 45	
Th.	14	4 59	7 9	14 24	4 28	11 2	23 20	Printing invented 1437
F	15	5 1	7 8	14 5	4 17	11 37	23 56	
S	16	5 2	7 6	13 46	4 5	0 14	12 34	Battle Tchernaya, 1855
Su.	17	5 3	7 4	13 27	3 53	0 54	13 17	9th Sun. after Trinity
M	18	5 5	7 3	13 8	3 40	1 45	14 16	
T	19	5 6	7 1	12 48	3 27	2 55	15 37	
W	20	5 7	6 59	12 29	3 13	4 18	16 59	Canada discov'd. 1508
Th.	21	5 9	6 57	12 9	2 59	5 37	18 0	Foundatio Stone Wesleyan Church laid, 1856
F	22	5 10	6 55	11 49	2 44	6 10	18 36	
S	23	5 11	6 54	11 29	2 29	7 0	19 22	
Su.	24	5 13	6 52	11 8	2 13	7 41	19 59	10th Sun. after Trinity
M	25	5 14	6 50	10 48	1 57	8 16	20 33	
T	26	5 15	6 48	10 27	1 41	8 49	21 8	Prince Albert born 1819
W	27	5 17	6 46	10 6	1 24	9 26	21 42	
Th.	28	5 18	6 44	9 45	1 7	9 59	22 16	24—St. Bartholomew
F	29	5 19	6 42	9 23	0 49	10 36	22 53	
S	30	5 21	6 40	9 2	0 32	11 13	23 33	
Su.	31	5 22	6 38	N 8 40	0 13	11 54	12 17	11th Sun. after Trinity

AUGUST.—August was originally called by the Romans *Sextilis*, or the sixth month; which was afterwards, by the senate, changed to *Augustus*, in honor of the Emperor. It corresponds to the Jewish ELUL (Neh. vi. 15), their twelfth civil, or sixth sacred month.

September, 30 Days.

MOON'S PHASES.

FIRST QUARTER 1st day, 6h, 47m, Morning
 FULL MOON 8th day, 4h, 27m, Morning.
 LAST QUARTER..... 15th day, 0h, 52m, Evening.
 NEW MOON..... 23rd day, 5h, 27m, Evening.
 FIRST QUARTER 30th day, 0h, 40m, Evening.

Day of W.	Day of M.	Sun		G. app. time.		High		Memoranda.
		rises at St. John's.	sets at St. John's.	Sun's Declination.	Equa of time. subt.	Water at St. John's, 1st tide.	2nd tide.	
		H. M.	H. M.	o ' N	M. S.	H. M.	H. M.	
M	1	5 23	6 36	8 19	0 5	0 44	13 14	
W	2	5 25	6 35	7 57	0 24	1 48	14 28	
T	3	5 26	6 33	7 35	0 43	3 12	16 0	Cromwell died, 1658
Th.	4	5 27	6 31	7 13	1 3	4 46	17 27	
F	5	5 29	6 28	6 50	1 23	5 30	18 3	1st Am. Congress, 1774
S	6	5 30	6 26	6 28	1 43	6 34	19 0	
Su.	7	5 31	6 24	6 6	2 3	7 26	19 48	12th Sun. after Trinity
M	8	5 33	6 23	5 43	2 23	8 8	20 26	Fall of Sevastop. 1855
T	9	5 34	6 21	5 20	2 44	8 45	21 3	R.C.Cathe'l.cons., 1855
W	10	5 35	6 18	4 58	3 4	9 22	21 40	
Th.	11	5 37	6 16	4 35	3 25	9 56	22 13	Columbus discovered
F	12	5 38	6 14	4 12	3 46	10 30	22 46	America, 1492 [1759
S	13	5 39	6 12	3 49	4 7	11 2	23 19	Wolfe killed at Quebec
Su.	14	5 41	6 10	3 26	4 28	11 35	23 54	13th Sun. after Trinity
M	15	5 42	6 8	3 3	4 49	0 15	12 37	
T	16	5 43	6 6	2 40	5 10	1 3	13 32	
W	17	5 45	6 4	2 17	5 32	2 8	14 51	
Th.	18	5 46	6 2	1 53	5 53	3 33	16 15	Surrender of Quebec, 1759
F	19	5 47	6 0	1 30	6 14	4 57	17 33	
S	20	5 49	5 58	1 7	6 35	5 30	18 2	Battle of Alma, 1854
Su.	21	5 50	5 56	0 43	6 56	6 27	18 48	14th Sun. aft. Trin. St
M	22	5 51	5 54	0 20	7 17	7 8	19 28	John's Cathedral
T	23	5 52	5 53	0 3	7 37	7 46	20 4	consecrated, 1850
W	24	5 54	5 50	0 27	7 58	8 22	20 39	29—Bat. of Kars, 1855
Th.	25	5 56	5 48	0 50	8 18	8 57	21 15	
F	26	5 57	5 46	1 14	8 39	9 34	21 54	St. Cyprian.
S	27	5 52	5 44	1 37	8 59	10 13	22 32	
Su.	28	6 0	5 42	2 0	9 19	10 53	23 14	15th Sun. after Trinity
M	29	6 1	5 40	2 24	9 38	11 38	12 3	St. Michael
T	30	6 2	5 38	2 47	9 58	0 32	13 3	Whitfield died, 1770

SEPTEMBER.—September, now the ninth, was anciently the seventh month, as is indicated by its name, which is derived from *septem*, signifying "seven;" *ember*, or *imber*, is from the Latin, and signifies "showers," as frequently the rainy season begins this month.

October, 81 Days.

MOON'S PHASES.

FULL MOON 7th day, 5h, 16m, Evening.
 LAST QUARTER 15th day, 8h, 12m, Evening.
 NEW MOON 23rd day, 4h, 6m, Morning.
 FIRST QUARTER 29th day, 8h, 14m, Evening.

Day of W.	Day of M.	Sun		G. app. time.		High		Memoranda.
		rises	Sun sets	Sun's Declination.	Equa. of time. subt.	Water at St. John's, tide.		
		H. M.	H. M.	o ' M. S.	H. M.	H. M.		
W	1	6 4	5 36	S 3 11	10 17	1 41	14 23	[1807 1st Str. on Hudson Riv.
Th.	2	6 5	5 39	3 34	10 36	3 10	15 55	Allies encamp'd before Sevastopol, 1854.
F	3	6 6	5 31	3 57	10 55	4 38	17 17	
S	4	6 8	5 29	4 20	11 13	5 49	18 0	
Su.	5	6 9	5 27	4 43	11 31	6 18	18 41	16th Sun. after Trinity
M	6	6 11	5 25	5 7	11 49	7 2	19 23	
T	7	6 12	5 23	5 30	12 6	7 44	20 3	1st Telegraph Mes. from Cape Breton, 1856
W	8	6 14	5 22	5 53	12 23	8 22	20 38	
Th.	9	6 15	5 20	6 16	12 39	8 54	21 12	
F	10	6 17	5 18	6 38	12 55	9 28	21 45	[Concep. Bay, 1852
S	11	6 18	5 16	7 1	13 11	10 1	22 17	Steam Com. estab'd in 17th Sun. after Trinity
Su.	12	6 20	5 14	7 24	13 26	10 34	22 51	
M	13	6 21	5 12	7 46	13 40	11 8	23 26	
T	14	6 22	5 10	8 9	13 54	11 46	12 17	19—Free Trade Act re- ceived Royal assent, 1855
W	15	6 24	5 8	8 31	14 8	0 30	12 58	
Th.	16	6 25	5 6	8 53	14 21	1 29	14 7	
F	17	6 27	5 1	9 15	14 33	2 47	15 27	
S	18	6 28	5 2	9 37	14 45	4 5	16 42	
Su.	19	6 30	5 0	9 59	14 55	5 16	17 46	18th Sun. after Trinity
M	20	6 31	4 58	10 21	15 6	6 0	18 9	Battle Navarino, 1827
T	21	6 33	4 57	10 42	15 16	6 30	18 50	Battle Trafalgar, 1805
W	22	6 34	4 55	11 3	15 25	7 11	19 31	
Th.	23	6 36	4 53	11 25	15 33	7 50	20 9	
F	24	6 37	4 51	11 46	15 41	8 30	20 51	Canton bomb'd. 1857
S	25	6 39	4 05	12 6	15 48	9 12	21 33	Battle Balaclava, 1854
Su.	26	6 40	4 48	12 27	15 54	9 55	22 18	19th Sun. after Trinity
M	27	6 42	4 46	12 47	15 59	10 42	23 6	
T	28	6 43	4 45	13 8	16 4	11 31	23 58	
W	29	6 45	4 43	13 28	16 8	0 28	12 58	
Th.	30	6 46	4 41	13 48	16 11	1 32	14 10	
F	31	6 48	4 40	S 14 7	16 14	2 52	15 32	Hallow Eve

OCTOBER.—October derives its name from the Latin word *octo*, "eight," indicating the place it held in the Roman calendar, and *imber*, or "shower" To the Jews it was known as *BUL*, signifying decay, as in the fall of the leaf (1 Kings vi. 38), or *MARCHESVAN*, as it was called after the captivity.

November, 30 Days.

MOON'S PHASES.

FULL MOON 6th day, 9h, 18m, Morning.
 LAST QUARTER 14th day, 2h, 40m, Evening.
 NEW MOON 21st day, 2h, 44m, Evening.
 FIRST QUARTER 28th day, 6h, 31m, Morning.

Day of W.	Day of M.	Sun		G. app. time.		High		Memoranda.
		rises	Sun sets at St. John's.	Sun's Declination.	Equa of time subt.	Water at St. John's, 1st tide.	2nd tide.	
		H. M.	H. M.	o ' M. S.	H. M.	H. M.		
S	1	6 49	4 38	S 14 26	16 16	4 11	16 48	All Saints
SU.	2	6 51	4 46	14 46	16 17	5 21	17 49	20th Sun. after Trinity
M	3	6 53	4 35	15 5	16 17	6 0	18 15	Free St. Andrew's Chur.
T	4	6 54	4 33	15 23	16 16	6 37	18 59	opened, 1850
W	5	6 56	4 32	15 42	16 15	7 20	19 39	
Th.	6	6 57	4 30	16 00	16 13	7 57	20 16	
F	7	6 59	4 29	16 18	16 10	8 33	20 50	General Election, 1859
S	8	7 0	4 27	16 35	16 6	9 6	21 23	Milton died, 1674
SU.	9	7 2	4 26	16 53	16 1	9 38	21 55	Prince Wales born 1841
M	10	7 3	4 25	17 10	15 55	10 11	22 28	Nfld. & New York Tele-
T	11	7 5	4 24	17 26	15 49	10 46	23 5	graph opened, 1856
W	12	7 6	4 22	17 43	15 42	11 23	23 42	
Th.	13	7 8	4 21	17 59	15 33	0 5	12 28	
F	14	7 10	4 20	18 15	15 24	0 53	13 21	Free Trade procl'd 1855
S	15	7 11	4 19	18 30	15 14	1 55	14 32	
SU.	16	7 12	4 18	18 45	15 3	3 7	15 42	22d Sun. after Trinity
M	17	7 14	4 16	19 0	14 52	4 16	16 49	16—General Elections,
T	18	7 15	4 15	19 15	14 39	5 19	17 47	1848 and 1852
W	19	7 17	4 14	19 29	14 26	6 0	18 13	Duke of Wellington's
Th.	20	7 18	4 13	19 43	14 12	6 35	18 59	funeral, 1852
F	21	7 20	4 12	19 56	13 57	7 23	19 48	Princess Royal born,
S	22	7 21	4 11	20 9	13 41	8 11	20 34	1840
SU.	23	7 23	4 11	20 22	13 24	8 57	21 20	23rd Sun. after Trinity
M	24	7 24	4 10	20 34	13 7	9 43	22 8	Peace with U. S. 1814
T	25	7 26	4 9	20 46	12 49	10 34	22 59	
W	26	7 27	4 8	20 58	12 30	11 25	23 52	Kars capitulated, 1855
Th	27	7 28	4 7	21 9	12 10	0 18	12 45	
F	28	7 30	4 7	21 20	11 50	1 13	13 44	[opened, 1857
S	29	7 31	4 6	21 30	11 29	2 18	14 54	St. John's Wesl. Church
SU.	30	7 32	4 6	S 21 40	11 8	3 29	16 3	St. Andrew

NOVEMBER.—November is so named from the Latin *novem* "nine," it being the ninth month of the Roman calendar. It corresponds to the Jewish *Chisleu* (Neh. i, 1), which signifies *chilled*, the third month of their civil, and ninth of their sacred year.

December, 81 Days.

MOON'S PHASES.

FULL MOON..... 0th day, 4h, 7m, Morning.
 LAST QUARTER 14th day, 7h, 3m, Morning.
 NEW MOON 21st day, 1h, 34m, Morning.
 FIRST QUARTER 27th day, 8h, 31m, Evening.

Day of W.	Day of M.	Sun		G. app. time.		High		Memoranda.
		rises	Sun sets	Sun's Declination.	Equa of time.	Water at St. John's,	1st 2nd tide. tide.	
		H. M.	H. M.	o ' M. S.	H. M.	H. M.		
M	1	7 33	4 5	S 21 50	10 45	4 36	17 9	3—St. Andrew's Kirk
T	2	7 32	4 5	21 59	10 22	5 40	18 0	opened, 1843
W	3	7 36	4 4	22 7	9 59	6 8	18 32	2d Ses. 7th Gen. Assem.
Th.	4	7 37	4 4	22 16	9 35	6 55	19 15	opened, 1860
F	5	7 38	4 3	22 24	9 10	7 36	19 55	5th Gen. Ass. dissolved
S	6	7 39	4 3	22 31	8 45	8 13	20 31	by proclamation 1854
Su.	7	7 40	4 3	22 38	8 19	8 50	21 7	2d Sun. in Advent
M	8	7 42	4 3	22 44	7 53	9 24	21 40	
T	9	7 43	4 3	22 50	7 26	9 58	22 15	Sons of Temperance
W	10	7 44	4 3	22 56	6 59	10 32	22 49	organized, 1850
Th.	11	7 44	4 3	23 1	6 32	11 5	23 24	Plymouth burnt by
F	12	7 45	4 3	23 6	6 4	11 43	12 4	French, 1377
S	13	7 46	4 3	23 10	5 36	0 26	12 48	
Su.	14	7 47	4 3	23 14	5 7	1 13	13 40	3d Sun. in Adv. Gen.
M	15	7 48	4 3	23 17	4 38	2 9	14 43	Elections, 1842
T	16	7 49	4 3	23 20	4 9	3 18	15 52	
W	17	7 49	4 4	23 23	3 39	4 28	17 3	
Th.	18	7 50	4 4	23 25	3 10	5 36	18 0	
F	19	7 51	4 4	23 26	2 40	6 5	18 33	Napoleon III. procl'd.
S	20	7 51	4 5	23 27	2 10	7 1	19 28	Emp. 1848
Su.	21	7 52	4 5	23 28	1 40	7 56	20 22	4th Sun. in Advent. St
M	22	7 52	4 6	23 28	1 10	8 48	21 12	Thomas
T	23	7 53	4 6	23 27	0 40	9 37	22 1	
W	24	7 53	4 7	23 26	0 10	10 25	22 49	
Th.	25	7 53	4 7	23 25	0 20	11 12	23 37	CHRISTMAS DAY
F	26	7 54	4 8	23 23	0 50	0 1	12 24	St. Stephen
S	27	7 54	4 9	23 21	1 20	0 47	12 9	St. John
Su.	28	7 54	4 9	23 18	1 50	1 34	14 2	Innocents' Day
M	29	7 54	4 10	23 15	2 19	2 34	15 8	
T	30	7 55	4 11	23 11	2 48	3 42	16 18	
W	31	7 55	4 12	S 23 7	3 17	4 52	17 28	

Equation of time to be subtracted from apparent time to the 24th, and to be added the remainder of the month.

DECEMBER.—December derives its name from the Latin *decem*, "ten;" as, in the Roman year, instituted by Romulus, beginning with March, it was the tenth month.



COLONY OF NEWFOUNDLAND.

Governor, Commander-in-Chief, and Vice-Admiral—
HIS EXCELLENCY SIR ALEXANDER BANNERMAN, KNIGHT.
*Private Secretary—*Lieutenant W. J. Coen, R. N. C.
*Colonial Aide-de-Camp—*Lieut.-Colonel Edward L. Jarvis:

THE EXECUTIVE COUNCIL.

Hon. Laurence O'Brien—*President in the absence of the Governor*
 Hon. Hugh W. Hoyles—*Attorney General.*
 Hon. Robert Carter, R. N.—*Acting Colonial Secretary.*
 Hon. Nicholas Stabb.
 Hon. John Bemister.
*Acting Clerk of the Council—*Hon. Robert Carter, R. N.

THE LEGISLATIVE COUNCIL.

Hon. Laurence O'Brien, <i>President,</i>	St. John's
Hon. John Rochfort, M. D.,	do
Hon. Edward Morris,	do
Hon. Nicholas Stabb,	do
Hon. Robert J. Pinsent,	do
Hon. Patrick Kough,	do
Hon. Robert Kent,	do
Hon. Kenneth M'Lea,	do
Hon. James S. Clift,	do
Hon. Richard O'Dwyer,	do
Hon. Edward White,	do
Hon. Peter G. Tessier,	do

*Master-in-Chancery and Clerk—*Hon. George H. Emerson, holding, by Her Majesty's patent, the rank and precedence of an Executive Councillor; *Usher of the Black Rod—*William F. Rennie; *Door Keeper—*James Walsh; *Assistant Door Keepers and Messengers—*James Cochran and Ambrose Ronayne.

HOUSE OF ASSEMBLY.

*Speaker—*FREDERICK B. T. CARTER, Esquire.
*District of St. John's East—*John Kent, Robert John Parsons, and John Kavanagh, Esquires.
*District of St. John's West—*John Casey, Thomas Talbot, and Henry Renouf, Esquires.

Secretary's Office

District of Harbor Grace—

*District of Carboncar—*Edmund Hanrahan, Esquire.

*District of Harbor Maine—*Patrick Nowlan, and Thomas Byrne, Esquires.

*District of Port-de-Grave—*John Leamon, Esquire.

*District of Bay-de-Verds—*Hon. John Bemister.

*District of Trinity—*Stephen Rendell, John Winter, and Frederick B. T. Carter, Esquires.

*District of Bonavista—*John H. Warren, Matthew W. Walbank, and Stephen March, Esquires.

*District of Twillingate and Fogo—*William V. Whiteway, and Thomas Knight, Esquires.

*District of Ferryland—*Thomas Glen, and Edward D. Shea, Esqrs.

*District of Placentia and St. Mary's—*Ambrose Shea, William G. Flood, and Richard McGrath, Esquires.

*District of Burin—*Hon. Hugh W. Hoyles and Edward Evans, Esq.

*District of Fortune Bay—*Hon. Robert Carter, R. N.

*District of Burgeo and LaPoile—*Daniel Woodley Prowse, Esqr.

Clerk—John Stuart; Clerk Assistant—Richard Holden; Solicitor—Thomas J. Kough; Sergeant-at-Arms—Elias Rendell; Librarian—Mrs. Feehan; Door Keeper—William Dalton; Messenger—Edward Kennedy; Under Door Keepers—Philip Brown, William Doyle; Assistant Messenger—Richard Cooney; Fireman—John Higgins.

COLONIAL SECRETARY'S OFFICE.

Acting Colonial Secretary—Hon. Robert Carter, R. N.; Clerks—Joseph Crowdy, and Michael A. Kent; Messenger—John Howson; Office Keeper—James Dunphy.

SURVEYOR GENERAL'S OFFICE.

Surveyor General—John H. Warren, Esq.; Deputy Surveyor—Edward M. J. Delaney, C. E.; Chainman—Richard Ryan.

DEPUTY SURVEYORS IN OUTPORTS.

*Northern District—*Alexander O'Donovan, Carboncar; Patrick Brine, Brigus; Benjamin Sweetland, Trinity; John T. Oakley, Greenspond; William Sweetland, Bonavista; Eugene Hamilton, King's Cove.

*Southern District—*Thomas Mockler, Bay Bulls; Michael Kelly, Ferryland; John Simms, Trepassey; John W. English, St. Mary's and Placentia; Henry Camp, Burin and Fortune Bay; Thomas Winter, Fortune Bay.

REVENUE ESTABLISHMENT.

BOARD OF REVENUE.

President—Dr. Winter, Acting Receiver General; Hon. Laurence O'Brien, John Kent, Esq., Stephen Rendell, Esq., and Hon. Nicholas Stabb.

REVENUE DEPARTMENT.

Acting Receiver General—Dr. Winter. Assistant Collector—George Bennett, Esq. Landing Surveyor—John Canning. Landing Waiters—Edward L. Moore, James S. Hayward. First Clerk and Warehouse Keeper—William Doutney. Second Clerk—James Winter. Third Clerk—William Gill. Fourth Clerk and Locker—William Reddin, Locker—Richard Furneaux.

Authorized Broker—Joseph R. Mullings.

OUTPORT SUB-COLLECTORS.

Fogo, James M. Winter. Greenspond, William Lang. Trinity, Robert Bayly. Carbonear, John McCarthy. Harbor Grace, Edward E. Brown; Clerk and Landing Waiter, Johnstone F. Burrows. Brigus, John C. Nuttall. Placentia, William Bradshaw. Burin, Thomas Birkett. Lamaline, Henry Benning. Harbor Briton, Thomas E. Gaden. Gaultois, Thomas Winter. LaPoile, Thomas Read.

PREVENTIVE OFFICERS.

Green Bay, (North Side,) Patrick Power. Bonavista, William Sweetland. Bay Bulls, John L. McKie. Ferryland, Luke Brown. St. Mary's, James Murphy. Trepassey, John Devereux. Grand Bank, Josiah Blackburn. Oderin, James Bradshaw. Fortune, Thomas Rogers. Burgeo, Richard Bradshaw. LaManche, Richard McGrath. Twillingate, Joseph J. Pearce. Little Placentia, Thomas Freeman. Channel (Port-aux-Basque), Marmaduke H. Clow. St. Lawrence, Hugh Vavasor. Belloram, John G. Lucas. Bay Roberts, George R. Hierlihy. Pushthrough, (Fortune Bay,) Henry Camp. Bay-de-North, John Burfitt. Hants Harbor, James L. Mews.

CUSTOMS' DEPARTMENT.

Acting Comptroller—Dr. Winter. Surveyors of Shipping—James S. Hayward; Thomas E. Gaden, Harbor Briton.

Shipping Master and Emigrant Agent—William J. Henderson.

TREASURY DEPARTMENT.

Acting Receiver General—Dr. Winter. Clerk—Geo. F. Hayward.

FINANCIAL SECRETARY'S OFFICE.

Acting Financial Secretary—Richard Howley, Esquire.

BOARD OF WORKS.

For the management and superintendence of Government House, Colonial Building, Court Houses, Gaols, Custom Houses, Hospital, Lunatic Asylum, and all other Buildings and Property belonging to the Colony; Light Houses, Buoys, and Beacons erected or to be erected within the Colony and its dependencies; supervision of Commissioners of Roads, Highways, Bridges, &c., &c.

Chairman—John H. Warren, Esquire; John Kavanagh, Thomas S. Dwyer, Terence Hallern, Stephen Rendell, James B. Wood, and William Boyd, Esquires.

Secretary—John Stuart. Superintendent of Public Buildings—Hon. Patrick Kough. Road Surveyors and Inspectors—Thomas Byrne, John Maher, and William Coady.

OUTPORT BOARDS OF ROAD COMMISSIONERS.

Brigus to Port-de-Grave, (both places inclusive).—John Leamon, Richard Mandeville, Rev. E. O'Keefe, John Wilcox, Philip Bennett, Thomas Butler, and John Bartlett.

Port-de-Grave, (Northern side of Northern Gut Bridge).—John Wilcox, Thomas Butler, Thomas Marten, jr., — Kenny, James Keeping, Samuel Daw, sr., (Ship Cove), John Butler, (Sand).

Bay Roberts—William S. Green, Richard Cormack, Isaac Bartlett, John MacStravic, and Robert Daw.

Harbor Grace, (from Spaniards' Bay Long Bridge to Barrett's Road).—Andrew Drysdale, William Donnelly, Hugh W. Trapnell, Thomas Higgins, Patrick Devereux, Robert Walsh, and James Crane.

Carbonear, (Electoral District)—William W. Bemister, Joseph Ryan, John Rorke, Edward Dwyer, James Forward, Michael Bulger, and William Brown.

Bay-de-Verds, (Upper Division, from Fresh Water to Northern Bay, exclusive).—Rev. John S. Peach, and Joseph H. Parsons, William Butt, Henry G. Addy, John Curtis, James P. King, John Fitzgerald.

Bay-de-Verds, (Lower Division, from Northern Bay, inclusive, to Grates Cove).—Rev. James Dove, Rev. Bernard Duffy, Rev. Oliver Rowse, and John Lewis, Thomas Neil, John Wright, Josiah Garland.

Trinity, (North Side) to Ragged Harbour.—Benjamin Sweetland, Robert Bayly, Alexander W. Brémner, Patrick Murphy.

Trinity, (South Side) from Grates Cove to Hants Harbour.—James L. Mews, John Sheehan, Thomas Cooper, Jabez Tilly, William Meadows, and William March.

New Harbour.—Charles Newhook, William Miller, Joseph Pretty, and Edgar March.

Hants Harbour to Head of the Bay.—Robert Ollerhead, Michael Howley, James Wiseman, John Walker, and Rueben Bemister.

Ragged Harbour to Bird Island.—Alexander Bremner, William Ashford, William Walsh, Robert Tilly, and John Cameron.

Bonavista.—William Sweetland, John Lawrence, Peter Ward, James Saint, Patrick Kough, John G. Skelton, M.D.

King's Cove—Rev. Matthew Scanlan, Michael Murphy, James Egan, David Candow, jr., and William Hancock, jr

Salvage—Henry Wills, William Dyke, jr., James Pike, William Sanson, Samuel Thurman, and Thomas Oldford.

Greenspond—William Tough, Michael Curren, George Skelton, M.D., James Noonan, John T. Oakley, William Lang, and James Carter.

Keels and Tickle Cove—David Candow, and Andrew Mallowney, (Tickle Cove) John Murphy, William Penny and James Egan, (Keels)

Twillingate—John Peyton, Joseph J. Pearce, Charles Edmonds, Joseph Minty, Thomas Manuel.

Fogo—Joseph B. Highmore, George E. Ridout, Henry Findlater, M.D., Richard Power, Thomas Humphrey, and James Rolls, Bar'd Island.

Tilton Harbor.—The Rev. Patrick Ward, and William Burke, John Brien, John Dwyer, and William Greene.

Moreton's Harbor and Tizzard's Harbor.—William Osmond, John Forward, (Tizzard's Harbor); Henry Knight, John Taylor, John Cantwell (Moreton's Harbor.)

Burnt Island, Exploits.—William Menchenton, Edward Dowton, Thomas Butt, William Sevin, Andrew Pearce, and Josiah Manuel.

Fortune Harbor.—James Hamilton, Michael Bryan, Michael Byrne, Matthias Glaveen, Patrick Carroll, William Carroll, (Indian Cove) and James Lyver, Waldron's Cove.

Jacket's Arm to Head of the Bay.—John Knight, J. Campbell, and John Rowsell.

Shoe Cove to Nipper's Harbor.—James Gray, John Stark, William Noble, and John Welshman.

Leading Tickle.—James Alcock, Edward Butler, and William Rowsell.

Ferryland and Fermews.—Rev. James Murphy, and Richard Cashin, William Prendergast, Simon Gregory, Patrick Finn, Michael Foley, and George Jackman.

Bay Bulls to the Goulds.—Martin Williams, Martin Driscoll, Thomas Mockler, Cornelius O'Brien, and Doctor McKie.

Placentia and St. Mary's.—Francis L. Bradshaw, and the Rev. Edward Condon, Michael J. Kelly, Thomas Freeman, and Thomas Keites.

Burin.—Edward Morris, William Hooper, Clement Benning, and Rev. John Cullen.

Lamaline.—James Healy, John Collins, and Clement Benning.

Grand Bank.—Edward Evans, Jonathan Snook, George Lake, and William Burfitt.

Harbor Breton.—Thomas E. Gaden, Samuel Howe, Philip Hubert, Clement Mallet, and James Hardy.

Belloram.—Rev. John Marshall, John Cluett, John Grandy, Patrick Rose, and Thomas Rose.

English Harbor.—T. R. Bennett, — Hall, — Fiander, T. Evans, and John Lucas.

From Garnish to Burin.—Henry Camp, Thomas Grandy, John Parsons, Joseph Grandy, George Moulton.

Gaultois.—Rev. Mr. Colley, and John Lee, Thomas Winter, H. Sheppard, and William F. Gallop.

Burgeo.—Rev. John Cunningham, and Robert H. Dawe, William Anderson, Stephen Vatcher, Richard Bradshaw.

LaPoile.—Thomas Reed, Rev. George Hooper, and Philip Clements, William Thomas, and Frederick Cox.

Channel (Port-aux-Basque).—Rev. W. W. LeGallais, Alexander Waddell, and Francis A. Read, John Gillam, John Brag, and the Rev. Joseph Gaetz.

GAOLS.

St. John's, (Penitentiary).—Keeper, Richard Brace; Turnkey, Joseph Score; Surgeon, Charles Crowdy, M. D.

Harbour Grace.—Gaoler, David Rogers; Surgeon, William Dow, M. D.

Trinity.—Gaoler, Charles Granger.

Ferryland.—Gaoler, Francis Geary.

Placentia.—Gaoler, Samuel Collins.

Burin.—Gaoler, John Murphy.

Bonavista.—Gaoler, Michael Fennell.

Twillingate and Fogo.—Gaoler, James Rice.

Harbour Briton.—Gaoler, John Garvey.

Brigus and Port-de-Grave.—Gaoler, James Butler.

COURT HOUSES.

St. John's.—Keeper, John R. Jeans.

Harbour Grace.—Keeper, David Rogers.

Ferryland.—Keeper, Francis Geary.

ST. JOHN'S HOSPITAL.

Medical Attendants—Hon. John Rochfort, M.D., and Thomas McKen, M.D.; Matron—Mrs. Dooley; Keeper—John Prowse.

LUNATIC ASYLUM, (ST. JOHN'S.)

Physician—Henry H. Stabb, M. D.

DISTRICT SURGEONS.

St. John's, (Eastern Ward).—Charles Crowdy, M. D., Charles H. Renouf, M. D. (*Western Ward*)—Frederick Bunting, M.D., James N. Fraser, M. D.

Conception Bay.—William Dow, M. D.

COLONIAL BUILDING AND GROUNDS.

Keeper—Mrs. Born.

COMMISSIONERS OF STREETS.

Harbour Grace—Robert John Pinsent, John Munn, Thomas H. Ridley.

Carbonear—Joseph Ryan, J.P., John Rorke, John McCarthy.

COMMISSIONERS FOR ERECTION OF PUBLIC WHARF.

Catalina—Alexander Bremner, William Walsh, John Cameron, James Murphy, John Diamond.

COMMISSIONERS FOR ERECTION OF BREAKWATERS.

Fortune—George Lake, sr., Elias Major, John Lake, John Spence, sr., Thomas Rogers, sr., John Forsey, sr., and Edward Bennett.

Grand Bank—Robert Forsey, William Buffett, Henry Hickman, Wilson Lovell, Henry Nicolle, George Tibbo, George Forsey.

LIGHT HOUSES.

Keepers of Lights.—Fort Amherst, John Shepperd. Cape Spear, James Cantwell; Assistant, Denis Cantwell. Harbor Grace Island, Edward L. Oke; Assistant, Austin Oke. Cape Bonavista, Jeremiah White; Assistant, Nicholas White. Cape Pine, Henry Herder; Assistant, Samuel Austin. Harbor Grace Beach (Beacon and Light,) George Brown. Cape Race, William Hally; Assistant, George Hewett. Green Island, Patrick Houlahan; Assistant, William Houlahan. Dodding Head, Martin Sparrow; Assistant, Thomas Doran. Offer Wadham, Thomas Hennessey; Assistant, William Hennessey. Baccalieu, James Ryan; Assistant, John Ryan. Cape St. Mary's, John Reiley; Assistant, William J. Collins. General Inspector—Robert Oke.

Light Dues.—One Shilling per ton on all vessels entering any Port or Harbor of the Colony, except Coasting, Sealing, or Fishing Vessels; but not to be levied more than once in any one year.—Sealing and Coasting Vessels—Sixpence per ton on registered vessels of 40 tons and upwards; Fifteen Shillings per annum on all vessels less than 40 tons.

The 19th of Victoria, Cap. 5, Sec. 5, enacts—"That no greater sum than £25 sterling shall be in any year levied for Light Dues on any Steamer or Vessel entering any port of this Colony; and no Steamer plying between Europe and any port of North America, and entering any port of this Colony as a Port of Call, shall be liable to pay any Light Dues or other port charges except Pilotage."

DESCRIPTION OF LIGHTS.

Fort Amherst Light, at the entrance of St. John's.—A Light was first established at this station in 1813, and until the granting of a Legislature to this Island the expenses consequent on its maintenance were defrayed by voluntary contributions; in 1850 a new House, Lantern and Apparatus were erected. The Light burns at an elevation of 110 feet, is produced by a treble argand burner placed in the focus of an annular lens of the fourth order, and in favorable weather can be seen 12 miles. When Cape Spear is enveloped in fog a heavy piece of ordnance is also discharged at this Fort every hour during day light, to assist vessels in making the harbor.

Cape Spear Light.—This Light was first exhibited on the 1st September, 1836; it is produced by seven argand burners and silvered reflectors burning at an elevation of 275 feet—it revolves, shewing a bright Light every minute, and in favourable weather can be seen 36 miles. It is situated in 47.31' N. lat. and 52.33' W. longitude.

Harbor Grace Island Light—First exhibited on the 21st November, 1837; it is a Fixed Light, has fifteen argand burners and reflectors, shewing a steady bright Light from N. to S. W. and by W.

seaward, elevated above the level of the sea 151 feet, and can be seen in fair weather in rounding Cape St. Francis or crossing Conception Bay, on the intervening space between N. and S. W. and by W.; on the land side the light is more feeble. It is situated in lat. 47.42 N., and in long. 53.05 W.

Cape Bonavista Light—Situated in lat. 48.42 N., lon. 52.59 W., is a Revolving Light, shewing alternately every 90 seconds a White and a Red Light. It is produced by sixteen argand burners and reflectors, burns at an elevation above the sea of 150 feet, and in favourable weather can be seen 30 miles. For some years the Light apparatus was in use at the Bell Rock, East coast of Scotland. By keeping this Light open with Cape Largent, it will carry you clear of the Flower Rocks; first exhibited 11th September, 1843.

Cape Pine Light—This Tower is of iron, built by the Imperial Government in 1849-50, and first put in requisition on the 1st January, 1851. It is revolving, and shews a brisk flash every thirty seconds—has 12 argand burners and reflectors—elevated above the level of the sea 314 feet—situated in lat. 46.37 N., and in lon. 53.30 W. In a favourable state of the atmosphere it can be seen 36 miles.

Harbour Grace Beach Beacon and Light—First exhibited 11th September, 1854; stands on the Point of Beach at the entrance of Harbour Grace. It is a double Light, as a distinction from Harbour Grace Island Light, one being placed above the other, preserving that appearance for six miles; exceeding this distance up to ten miles, the two Lights appear blended into one. In sailing into Harbour Grace with a fair or leading wind, bring the Beach Beacon to bear W. or W. by S., and by keeping the Light or building a little on the starboard bow it will carry you clear of the Bar, on which at low water there is not more than 8 feet of water.

Green Island Light, at the entrance of Catalina Harbour, Trinity Bay—Situated in lat. 48.30 N., lon. 53.03 W. This is a Fixed White Light, burns at an elevation of 92 feet above high water, exhibited every night from sun-set to sun-rise, and in favorable weather will be seen from E.N.E., seaward, to S.W., 12 miles. Vessels bound Northward by keeping this Light open with the North Head of Catalina until Bonavista Light opens with Cape LeJean, will give the Flower Rocks an ample berth—or when coming from the Northward and bound for Catalina, by giving the N. Head a moderate berth, you will clear the Brandies Rocks by steering for Green Island Light.

Cape Race Light.—Exhibits a Fixed White Light, from sunset to sunrise. The Light will be visible to seaward from N. E. by E. round by the S.E. and South to West. The Light is elevated 180 feet above the mean water level of the sea, and may be seen in clear weather 17 miles from a ship's deck. The tower is striped red and white vertically. It stands close to the old Beacon, which has been cut down. The Light-house is in lat. $46^{\circ} 39' 12''$ N., lon. $53^{\circ} 2' 38''$ W. All bearings are Magnetic. Var. 24° W. N.B.—A Toll will be levied upon all vessels benefitting by this Light.

Dodding Head, Great Burin Island Light—This Light was put in requisition on the 3rd August, 1858, and is exhibited every night

from sun-set to sun-rise. It is revolving, catodioptric, of the second order, producing a brilliant White Light every minute, with intermediate flashes at intervals of twenty seconds, burning at an elevation of 410 feet above the level of the sea, and in favourable weather can be seen thirty miles—situated in $47^{\circ} 0' 0''$ North Latitude, $55^{\circ} 0' 5''$ West Longitude.

Offer Wadham Island Light—Was first exhibited on the 4th October, 1858, and will continue to be lighted every night from sun-set to sun-rise. The Light is a steady, fixed lens-light, burning on a circular Brick Tower 96 feet above the level of the sea, and can be seen in a favourable state of the atmosphere 12 miles. Situated in Latitude 49.36 North—Longitude 53.46 West.

Baccalieu Island Light—This Light is exhibited every night from the going away of daylight in the evening to the return of daylight in the morning. The position and characteristics of this Light are as follows :—Baccalieu Light House is situated on the Northern end of that Island—Latitude 48.09 North, Longitude $52 50$ West,—the Tower is of Brick, the Keeper's Dwelling a Square Building, detached from the Tower, painted white, with the roof red.

The Light is a Catodioptric first class Holophotal Revolving White Light, shewing a flash every twenty seconds. It is elevated 380 feet above high water, and can be seen in clear weather forty nautical miles, and a lesser distance according to the state of the atmosphere. When the Southern end of the Island bears N.N E., the Light will not be visible when nearer the Island than eight miles.

Cape St. Mary's Light—Was put in requisition on the 20th September, 1860; it is a Revolving Catodioptric Light of the first order, producing alternately every minute a brilliant Red and a White Light, burning at an elevation of 325 feet above the level of the sea, and will be seen in a favourable state of the atmosphere 30 miles from a vessel's deck; situated in $46.49.25$ N. lat., $54.8.45$ lon. West. The Tower is of Brick, and on each side of which stand the dwellings of the Keeper and Assistant, the sides of which are painted White, roofs Red.

POST OFFICE DEPARTMENT.

Post Master General—John Delaney, Esq. Chief Clerk and Accountant—James Healy. Second Clerk—John Freeman. Assorters—E. Solomon, and James Furlong. Messenger—Patrick Burke.

Office hours, from 9 o'clock, a.m., to 4 p.m., Sundays excepted.

POST MASTERS.

Harbour Grace, Andrew Drysdale; Carbonear, Mary Casey, (Post Mistress); Brigus, Sarah Stentaford, (Post Mistress); Trinity, Anne Cross, (Post Mistress); Bonavista, John Lawrence; Greenspond, William Lang; Fogo, John Fitzgerald; Twillingate, Joseph J. Pearce; Bay Bulls, Martin Williams; Ferryland, John Morry; Trepassy, John Devereux; Placentia, Mary Morris, (Post Mistress); Burin, Thomas Birkett; Harbor Briton, Thomas E. Gaden; Burgeo, Richard Bradshaw.

WAY OFFICERS.

Port-de-Grave, Matthew O'Rielly; Bay Roberts, James Fitzgerald; Blackhead, John Curtis; King's Cove, Michael Murphy; New Perlican, Francis Howel; Old Perlican, William Christian; St. Mary's, Philip Breen; Oderin, Andrew Murphy; Salmonier, Patrick Hurley; Little Placentia, Alexander Burke; Harbour Maine, Patrick Brick; LaPoile, Horatio Read; Hermitage, Thomas Winter; Catalina, J. Jeans.

POSTAL ROUTES.

Summer—Between St. John's and Portugal Cove, every day, except Sunday and Friday, by Waggon.

Between Portugal Cove, Brigus, Harbor Grace, and Carbonear, by Steamer, tri-weekly.

Overland, by Waggon, every Monday and Friday, for Carbonear, via Topsail, Kelligrews, Holyrood, Harbor Main, Brigus, Port-de-Grave, Bay Roberts, Spaniard's Bay, and Harbor Grace, (except) the Mondays on which the Halifax Steamer is due, when the Mails will then be dispatched Six Hours after her arrival in Port.

Winter—Overland Mondays and Thursdays, between St. John's and Carbonear, calling at all the intermediate places.

Between Carbonear, and New Perlican, (calling at Heart's Content) weekly, by Messenger.

Between Carbonear and Bay-de-Verds, weekly, by Messenger, calling at intermediate places.

Between New Perlican and Bay-de-Verds and Grates, calling at Old Perlican, weekly, by Messenger.

Between New Perlican and Trinity, weekly, by Boat.

Between Trinity and Bonavista, weekly by Messenger.

Between Trinity and King's Cove, weekly by Messenger.

Between Bonavista and Greenspond, fortnightly, during summer months, touching at King's Cove or Tickle Cove.

Between St. John's, Fogo and Twillingate, leaving St. John's every second Wednesday after the arrival of the Mail Packet from Halifax, or on such other days as the Post Master General may appoint.

* Between St. John's and Ferryland, weekly, by Waggon, during summer months, and fortnightly in winter.

* Between Ferryland and Trepassay, by Messenger.

* Between St. John's and Placentia, by Waggon, in six hours after the arrival of Halifax steamer.

* Between Placentia and St. John's, by Waggon, in one hour after the arrival of Packet Boat from Burin.

* Between Salmonier and St. Mary's, by Messenger.

* Between Great and Little Placentia, by Messenger.

* Between Little Placentia, LaManche, Sound Island, Harbor Buffett, Red Island, Merasheen and Burgeo, by Boat.

* Between Great Placentia and Burin, by Boat, touching at Paradise and Oderin.

- * Between Burin and Garnish, by Messenger.
- * Between Garnish, Grand Bank and Fortune, by Messenger.
- * Between Garnish and Harbor Briton, calling at English Harbor by Boat.
- * Between Harbor Briton, Burgeo and LaPoile, by Boat.

Newspapers posted in this country, when addressed to any place in Nova Scotia, Canada, P. E. Island, Bermuda, the United States, or elsewhere, must in all cases be prepaid, by Mail, otherwise they cannot be forwarded, except deposited in the Government Agent's Bag as merchandise.

All Correspondence addressed to the United States, must be prepaid, or it cannot be forwarded.

Routes marked thus * are fortnightly during summer, and monthly during winter months.

INLAND POSTAGE.

For Letters—Under ½ oz.....	0	3d
Under 1 oz.....	0	6
3d for every additional ½ ounce		
For Books—Packet not exceeding 4 oz.	0	3d
Above 4 oz., not exceeding 8 oz	0	6
Above 8 oz., not exceeding 1 lb.....	1	0
Above 1 lb., not exceeding 1½ lb....	1	6
Above 1½ lb., not exceeding 2 lb....	2	0

Postage Stamps may be had at the General Post Office every day during Office hours.

Table of Single Rates of Postage on Letters, posted in Newfoundland for the undermentioned Countries.

Africa (west coast of), and Australia, 11d. Bermuda, West Indies, and Cape Breton, 4d, and 3d cy. additional when posted at the Outports. Canada, 10d. China, 1s5d. Denmark 1s4½d. France, 8d. Hamburg, 1s 2d. Halifax, N. S., 4d, and 3d cy. additional from the Outports. India, 11d. New Brunswick, 6½d. Norway, 1s 10d. P. E. Island, 4d, and 3d cy. in addition from the Outports. Prussia, and Rome, 1s 2d. Spain 11d. Sardinia, 10d. Sweden, 1s 8d. United Kingdom, 6d. United States 4d, and 3d cy. in addition from the Outports.

SAVINGS' BANK.

Governors—Three members of the Legislative Council, and five members of the House of Assembly, viz.:—Hon: Nicholas Stabb, Hon Robert Kent, and Hon James S. Clift, of the Council; and the Hon the Speaker, Dr. Winter, Hon Robert Carter, R. N., Ambrose Shea, and John Leamon, Esquires, of the House of Assembly.

Directors—Hon N. Stabb, Hon the Speaker, and Dr. Winter,
Cashier—Hon Edward Morris.

Assets and Liabilities, 31st December, 1860, (as audited).

Assets	£186,126	13	1
Liabilities	167,948	4	8
Surplus of Assets	£18,178	8	5

The Bank is open every Monday between the Hours of 12 and 2 o'clock, for Depositors' business; and on Wednesdays for Discount business, from 11 to 3 o'clock.

RULE WITH RESPECT TO DEPOSITORS.

Deposits—All Deposits of not less than One Shilling made by any person, shall as soon as they amount to Twenty Shillings, be considered as a Deposit to the amount of the aggregate sum deposited, from the period when the last sum constituting such aggregate was deposited. The Deposits to bear interest at three per cent., but no interest will be allowed on sums less than a Pound, nor for Deposits under six months, the six months to commence from the first day of the month ensuing the receipt. The interest due on deposits on the last day of December in each year, to be carried to the credit of the Depositor, and the balance carried to a new account, and to be regarded as a deposit made on that day. The Bank is at liberty to return or reject the deposits of any person or persons, and to decline receiving any deposits exceeding One Hundred and Fifty Pounds, subject to the payment of interest thereon, when it shall be deemed expedient so to do. And no sum exceeding £100 shall be received from any depositor, but on condition that the same shall not be withdrawn, except upon a notice ending at two months from the date thereof, or upon forfeiture of two months' interest thereon, if at the request of such Depositor the Directors consent to pay the same without requiring such notice. — *Third Rule of Newfoundland Savings' Bank.*

BRANCH BANK, HARBOR GRACE.

Cashier and Clerk— ——— ———

POOR COMMISSIONERS.

Joseph Shea, Esq., M. D., (Stipendiary,) John H. Warren, Esq., and Hon John Bemister.

COMMISSIONERS FOR REDUCTION OF PUBLIC DEBT.

John Kent, Esq., Hon Laurence O'Brien, and the Acting Receiver General.

COMMISSIONERS OF PILOTS.

Chairman—John B. Bulley, Esq.; Hon Laurence O'Brien, Hon. Nicholas Stabb, Nicholas Cusack, and F. C. K. Hepburn, Esquires.

Table of Rates of Pilotage of Vessels in and out of the Harbor of St. John's.

	Currency.
On Vessels under Eighty Tons New Measurement	£2 0 0
On Vessels from Eighty Tons to One Hundred Tons New Measurement	2 10 0
On Vessels from One Hundred Tons to One Hundred and Twenty Tons New Measurement	2 15 0
On Vessels from One Hundred and Twenty Tons to One Hundred and Sixty Tons New Measurement	3 0 0
On Vessels from One Hundred and Sixty Tons to Two Hundred Tons New Measurement	3 5 0
On Vessels from Two Hundred Tons to Two Hundred and Forty Tons New Measurement	3 10 0
On Vessels from Two Hundred and Forty Tons to Two Hundred and Eighty Tons New Measurement	3 15 0
On Vessels from Two Hundred and Eighty Tons to Three Hundred Tons New Measurement	4 0 0
On Vessels from Three Hundred Tons to Three Hundred and Fifty Tons New Measurement	5 0 0
On Vessels from Three Hundred and Fifty Tons to Four Hundred Tons New Measurement	6 0 0
On Vessels from Four Hundred Tons to Five Hundred Tons New Measurement	7 0 0
On Vessels from Five Hundred Tons to Six Hundred Tons New Measurement	8 0 0
On Vessels from Six Hundred Tons to Seven Hundred Tons New Measurement	9 0 0
On Vessels from Seven Hundred Tons to Eight Hundred Tons New Measurement	10 0 0
Over that size—for every One Hundred Tons additional	0 10 0
And on no one Vessel is the Pilotage to exceed	12 0 0

All Coasting Vessels which may take Pilots to pay one half of the above Rates of Pilotage, in proportion to their tonnage.

The above Scale of Pilotage shall be payable on the Register Tonnage of all such Vessels, as ascertained before going out of the Harbor.

	Currency.
Her Majesty's Ships under Sixth-Rate	£3 10 0
Do. do. of Fourth, Fifth, and Sixth-Rate	6 10 0
Do. do. of First, Second, and Third-Rate	8 10 0

All Merchant or Mail Steamers to pay 6d. for each Horse Power, and on no one Ship to exceed Twelve Pounds currency, to be ascertained either by Ship's Register, or if necessary, by Captain's Affidavit.

COMMISSIONERS OF WRECKED PROPERTY.

Placentia and St. Mary's—Roger F. Sweetman and George Simms, jr. Ferryland—Martin Williams.

BOARD OF HEALTH.

Health Officers—Joseph Shea, M. D., St. John's. William Dow, M. D., Harbor Grace. Richard Berny, M. D., Carbonear. Francis Moran, M. D., Burin.

QUEEN'S PRINTER.

John Collier Withers, Esquire.

JUDICIAL DEPARTMENT.

Supreme Court—Chief Justice—Sir Francis Brady, Knight. Assistant Judges—Honourables Philip Francis Little, and Bryan Robinson. Attorney General—Honorable Hugh W. Hoyles. Solicitor General—John Hayward, Esquire. Queen's Counsel—Hon. Hugh W. Hoyles, Hon. George H. Emerson, and Frederick B. T. Carter. Chief Clerk and Registrar Supreme and Central Circuit Courts—Charles Simms. Chief Clerk and Registrar Northern Circuit Court—Lewis W. Emerson. Chief Clerk and Registrar Southern Circuit Court—George Simms. Crier of the Supreme Court and Tipstaff—William Howlin.

Barristers and Attornies of the Supreme Court at St. John's, according to seniority, exclusive of the Attorney and Solicitor Generals and Queen's Counsel.—Charles Simms, John S. Stevens, Robert R. W. Lilly, George J. Hogsett, John Little, Thomas J. Kough, Matthew W. Walbank, William V. Whiteway, William G. Flood, Hon. Robert J. Pinsent, Archibald Emerson, Charles H. Shams, Augustus O. Hayward, Daniel W. Prowse, Joseph J. Little, William L. O'Donnell.

Attornies at Law—Robert R. Holden, Michael J. O'Mara.

Students admitted Members of the Law Society—Robert Joseph Kent, and William O. Wood.

Barristers and Attornies, Harbor Grace—John Hayward, Richard Anderson, Henry C. Watts, Henry A. Clift.

Law Society Benchers—Frederick B. T. Carter, Treasurer; Hon. Attorney General, Solicitor General, Charles Simms, George J. Hogsett, John Little, William V. Whiteway. Secretary and Treasurer—W. V. Whiteway.

Sheriffs—Central District—John V. Nugent. Northern District—Garland C. Gaden. Southern District—John Stephenson.

Masters-in-Chancery—Hon. George H. Emerson, Charles Simms, Thomas J. Kough, Hon Robert J. Pinsent.

Vice-Admiralty Court—Judge—The Chief Justice for the time being. Registrar—Peter W. Carter. Marshal—James Bayly.

TERMS OF COURTS.

Supreme Court—Spring Term commences 20th May, to continue three weeks. Autumn Term, 20th November, and to continue three weeks, with power to the Judges to prolong the Term from day to day, not exceeding six days in all.

Sessions after Term—The first Monday in February, March, April, and July, and to continue for a period not exceeding six days.

Central Circuit Court—Spring Term, 20th April, and to continue three weeks. Autumn Term, 20th October, and to continue three weeks, with power to the presiding Judge to prolong the Term from day to day, not exceeding six days in all.

Sessions after Term—The second Monday in February, March, and July, and to continue for a period not exceeding six days.

STIPENDIARY MAGISTRATES.

St. John's—Peter W. Carter, and Thomas Bennett.

Conception Bay—Joseph Peters, Harbor Grace. Joseph Ryan, Carbonear. Charles Cozens, Brigus.

Trinity Bay—Benjamin Sweetman, Trinity. James L. Mews, Old Perlican.

Bonavista—William Sweetland.

Twillingate—John Peyton.

Ferryland—John L. McKie, Bay Bulls. Peter Winsler, Ferryland.

Placentia and St. Mary's—Francis L. Bradshaw, Placentia. James Murphy, St. Mary's.

Burin—William Hooper, Burin. Josiah Blackburn, Grand Bank. Clement Benning, Lamaline.

Fortune Bay—Thomas E. Gaden, Harbor Briton.

JUSTICES OF THE PEACE.

St. John's—Hon. Robert Carter, R.N., and Charles Simms.

Conception Bay—Thomas Hutchings, John Munn, William S. Green, James Cormack, William Donnelly, William W. Bemister, George Forward, John Rorke, James L. Prendergast, John Wilcox, John Keeping, John Leamon, Richard Mandeville, Patrick Strapp, Richard Berney, M. D., Israel McNeil, John Lewis, William H. Ridley, William Holden.

Trinity Bay—William Kelson, James Quintz, John Tilly, Robert Ollerhead, Alexander Bremner, Charles Newhook, Stephen March, Philip Levesconte, Hon. John Bemister, Michael Howley.

Bonavista Bay—John T. Oakley, George Skelton, Joseph Shears, Michael Murphy, David Candow, James Saint, Peter Ward.

Twillingate and Fogo—George E. Ridout, James Fitzgerald, William Menchenton, Joseph B. Highmore, James Alcock, William Stirling, M.D., Joseph J. Pearce, Charles Edmonds.

Ferryland—Luke Brown.

Placentia and St. Mary's—George Sirams, Patrick Furlong, George LeMessurier, John Walsh, Thomas E. Collett.

Burin—Clement Benning, James Moran, Edward Evans, Isaac Collins, John O'Neill.

Fortune Bay—Thomas Read, Thomas Renouf, Robert H. Dawe, Clement Mallett, Samuel Howe, William F. Gallop, Thomas Winter.

LaPoile—Philip Sarsoleil, (Petites).

St. George's Bay—Horatio H. Forrest, Elwin Alexander.

Labrador—Nathan Norman, Thomas Row Crockwell, Donald A. Smith, William B. Bendall, Sampson Daw, Henry Warren, Thomas G. Larmore, George Goodridge.

For the Island of Newfoundland—Lt. Colonel J. J. Grant, R.N.C.,
Commandant.

The Judges of the Supreme Court are in the Commission of the
Peace for the Central, Northern and Southern Districts of the Island.

CLERKS OF THE PEACE.

St. John's (for Central District)—Robert R. W. Lilly. Harbour
Grace—John Fennell. Carbonear—John Mackay. Brigus—John
C. Nuttall. Trinity—Robert Bayly. Bonavista—John Lawrence.
Twillingate—Aaron A. Pearce. Burin—Patrick Morris. Harbor
Breton—Samuel Howe.

CORONERS.

St. John's—Joseph Shea, M.D. Harbor Grace— — — — —
Brigus—Charles Cozens. Western Bay—John Curtis. Trinity—
Benjamin Sweetland. Greenspond—Dr. Skelton. Ferryland—John
Stephenson. Harbor Briton—Thomas E. Gaden. Bay Bulls—
Martin Williams. South Shore, Trinity Bay—Michael Howley.
Bonavista—John Lawrence. Harbor Maine—Patrick Strapp. Her-
mitage Bay—Thomas Winter.

POLICE.

St. John's—Inspector, Timothy Mitchell. Sergeants, William
Ferguson and James Kenna.

Harbor Grace—High Constable, Luke Fallon.

Assayer of Weights and Measures—Timothy Mitchell, St John's.

EDUCATIONAL INSTITUTIONS.

ST. JOHN'S ACADEMY.

Directors—Church of England Board—Right Rev. Dr. Feild,
Thomas Bennett, Hon Robert Carter, Hon Hugh W. Hoyles, Hon
Judge Robinson. Head Master—Rev George P. Harris, M. A.;
Second Master—Charles F. Jagg.

Roman Catholic Board—Right Rev. Dr. Mullock, John Kent,
Hon. John Rochfort, M.D., Hon. Laurence O'Brien, Hon. Judge
Little. Masters—Very Rev. Henry Carfagnini, Rev. R. O'Donnell,
T. Talbot, M. Fenlon, — Comerford, — Bennett, Sig. Caylo.

General Protestant Board—Walter Grieve, John McGregor, John
B. Bulley, James O. Fraser, Hon. Peter G. Tessier, William Boyd.
Head Master—Adam Scott.

ST. JOHN'S WESLEYAN ACADEMY.

Directors—Rev. Edmund Botterell, James J. Rogerson, Hon.
Nicholas Stabb, Hon. John Bemister, Joseph Woods. Head Mas-
ter—Alexander Simpson Reid, M. A. Assistant Teacher—James
Brette.

GRAMMAR SCHOOLS.

Directors—Harbour Grace—John Munn, Thomas H. Ridley,
William Donnelly, John Hayward, Hugh W. Trapnell, John Ryan,
D. Greene. Master—John I. Roddick.

Carbonear—Joseph Ryan, William W. Bemister, Richard Berny,
John McCarthy, Edward T. Pike, Michael Bulger, Moses Wiltshire.
Master—Alexander O'Donovan, B.A.

COMMERCIAL SCHOOLS.

Commissioners—Brigus—Charles Cozens, James N. Leamon, John C. Nuttall, Richard Mandeville, Thomas Kelly. Teacher—William Greene.

Broad Cove (Bay-de-Verds).—Rev. J. S. Peach, Rev. James Dove, John Lewis, William Butt, Jr. Teacher—Alexander M'Kay.

Trinity—G. P. Lockyer, A. W. Bremner, Edward Egan. Teacher—Richard Ash.

Old Perlican—Rev. John Goodison, Jabez Tilly, and Stephen K. March. Teacher—William Christian.

Bonavista—William Sweetland, Peter Ward, James Saint, John Lawrence. Teacher—Samuel Rowsell.

King's Cove—Rev. M. Scanlan, Michael Murphy. Teacher—

Ferryland—Rev. James Murphy, Robert Carter, Luke Brown, Michael Devereux. Teacher—Michael Kelly.

Burin—Episcopal Branch, — — —, Teacher; Roman Catholic, James Harney, Teacher; Wesleyan, — — —, Teacher.

Harbor Briton—Thomas E. Gaden, Rev. W. K. White, Rev. Edward Colley, Clement Mallett, Samuel Howe. Teacher—J. J. Blackburn.

Twillingate—Rev. Thomas Boone, Rev. Charles Comben, and Edwin Duder, — Owens, John Roberts.

COLONIAL AND CONTINENTAL CHURCH SOCIETY.

Patron—Her Most Gracious Majesty the Queen. Vice-Patrons—His Grace the Archbishop of Canterbury; His Grace the Archbishop of York. President—The Most Hon. the Marquis of Cholmondeley, and 50 Vice-Presidents, consisting of Peers of the United Kingdom, English and Colonial Bishops, Colonial Governors, Members of Parliament, &c., &c.

General Superintendent of British North America—Rev Dr Hellmuth.

Corresponding Committee in Newfoundland—Charles Simms, Chairman; James Bayly, Secretary; Dr Winter, Treasurer; Edward L. Jarvis, Hon Hugh W. Hoyles, Rev T. M. Wood, F. B. T. Carter. J. W. Marriott, Inspector and Organizing Master.

Teachers—St John's—Mr C. J. Major. Infants' School—Miss Marrett, Mrs Burke, and Miss Donaldson; Mr and Mrs Crosby, (South Side). Petty Harbor—Mr and Mrs Bishop. Torbay—Miss Anderson. Portugal Cove—Mr Ward. Brigus—Mr and Mrs Mills. Salmon Cove—Mr Kellegrew. Port-de-Grave—Mr and Mrs Maddock. Harbor Grace—Mr and Mrs Gardner. Spaniard's Bay—Mr and Mrs Earle. Bishop's Cove—Mr Dobie. Heart's Content—Mr Thompson. Trinity—Mr Collins and Miss Lockyer. English Harbor—Mr Moore. Bonavista—Mr Lawrence. Salvage—Mr and Mrs Thurman. Greenspond—Mr R. Wills and Miss Wills. Swain's Island—Mr E. Bishop. Change Island—Mr Jeans. Twillingate—Mr H. Wills and sister. Belloram—Rev J. and Mrs Marshall. Fogo—Miss Winter.

WESLEYAN METHODIST SCHOOL AND AGENCY SOCIETY.

Committee—Rev E. Botterell, Chairman and Treasurer ; Rev J. S. Peach, Secretary ; Rev W. E. Shenstone, Rev J. S. Peach, Rev E. Brettle, Rev C. Lockhart, John Munn, James J. Rogerson, John Bulley, sr., Joseph Woods, Israel M'Neil.

Teachers—St John's— — — — —. Carbonear— — — — —
Black Head—John Curtis. Old Perlican—William Christian. Port-de-Grave—Samuel Pelley. Pouch Cove—Joseph Baggs. Cupids—Thomas Shenstone. Catalina—Benjamin Cole. Flat Island—William Harding. Sound Island—Charles Downs.

PRESBYTERIAN (ST. ANDREW'S) SCHOOL, ST. JOHN'S.

Committee—George G. Geddes, Gilbert Browning, John B. McLea. Teacher—James N. Neilson.

BOARDS UNDER EDUCATION ACT.

St John's—The Ven. Archdeacon Lower, or the Senior Clergyman of the Church of England ; the Rev Edmund Botterell, or the Senior Wesleyan Minister ; the Rev Charles Pedley, the Rev Moses Harvey, the Rev George M. Johnson, and the Hon Nicholas Stabb, Eugenius Harvey, Francis C. K. Hepburn, William Rendell, and William H. Mare.

Harbor Grace—The Rev Bertram Jones, Rev Christopher Lockhart, and Richard Anderson, John Munn, William H. Ridley, John Hayward, and Rev Julian Moreton.

Carbonear—The Rev Elias Brettle, Rev William J. Hoyles, and William W. Bemister, John Rorke, Edward Pike, James Forward, jr., and Israel McNeil.

Bay Roberts—The Rev Martin Blackmore, William S. Green, Rev James C. Harvey, Rev William E. Shenstone, and Thomas Marten, jr., John Wilcox, Isaac Bartlett.

Brigus—The Rev Thomas Harris, Rev William Shannon, and John Leamon, William S. Mills, Christopher Norman, James Wilcox and Jonathan Percy.

Bay-de-Verds—The Rev John S. Peach, Rev Oliver Rouse, Rev James Dove, and John Lewis.

Trinity Bay North—The Rev Benjamin Smith, the Rev Alfred W. Turner, and William Kelson, Benjamin Sweetland, Robert Bayly, Alexander Bremner, jr., and Frederick J. Wyatt.

Trinity Bay West—The Rev George Gardner, and Robert Ollerhead, James Moore, Robert Rockwood, Heart's Content ; Charles Newhook, New Harbor ; James Wiseman, Heart's Delight ; Rueben Bemister, New Perlican.

Trinity Bay South—The Rev John Goodison, Rev O. Rowse, and James Mews, Jabez Tilly, and John Snelgrove.

Trinity Bay East—The Rev Thomas Fox, Rev William Netten, and Alexander Bremner, William Norman, John Daymond, and Robert Tilly, junr.

Bonavista Bay North—The Rev William J. Milner, and John T. Oakley, George Skelton, M. D., James Noonan, William Lang, Darius Blanford, and R. Wills.

Bonavista Bay South—The Rev A. E. C. Bayly, Rev Paul Prestwood, and William Sweetland, James Saint, John G. Skelton, William Brown, and Stephen Abbott.

Bonavista Bay West—The Rev John Moreton, David Candow, Tickle Cove; John Sheers, Open Hall; and Samuel Coffin, William Hancock, jr., and David Candow, jr.

Fogo—The Rev Reginald M. Johnson, and James M. Winter, George E. Ridout, Henry Simons, Joseph Highmore, Thomas Taylor, and James Rolls, (Bar'd Island Harbor.)

Twillingate—The Rev Thomas Boone, Rev Charles Comben, and John Peyton, Charles Edmonds, Charles Duder, and Rev Josiah Darrell, Herring Neck.

Moreton's Harbor—The Rev G Tucker, A B.; Rev James A. Duke, and Robert Small, Josiah Manuel, Exploits; Job Stuckless, and William Barnes.

Ferryland—The Rev Robert Temple, Robert Carter, James H. Carter, James Carter, John Morry, and Peter Winser.

Placentia—The Rev W. F. Meek, James Butler, Thomas E. Collett, George H. Bennett, Thomas Collins, (Oderin), James Hollett, and James Chalmers.

Burin—Rev John S. Phinney, Rev William Rozier, Thomas Birkett, Owen Pine, Richard Willie, George Goddard, and William Paul.

Lamaline—The Rev A. E. Gabriel, George H. Evans, George Cake, James Pitman, George Butt, and Thomas Laskey.

Grand Bank—The Rev John Winterbotham, Edward Evans, Josiah Blackburn, James Hickman, and Jonathan Snook.

Fortuno Bay—The Rev William K. White, Rev E. Colley, Rev John Marshall, Thomas E. Gaden, Samuel Howe, Arthur Drever, Clement Mallet, and W. J. Gallop.

Burgeo—The Rev John Cunningham, Rev Edward Colley, Robert H. Daw, William Scott, Stephen Vatcher, and John Anderson.

LaPoile—The Rev George Hooper, Rev Joseph Gactz, Thomas Reid, William Thomas, and Thomas Anderson.

Channel—The Rev W W LeGallais, Rev Joseph Gactz, Francis Read, John Gilman, John Pike, and Edward Yenge.

Inspector of Schools under Protestant Colonial Boards—John Haddon.

ROMAN CATHOLIC SCHOOLS.

St John's—Orphan Asylum, (Boys). Teachers—Thomas McGrath, Francis Grace; Industrial Department, Bartholomew Connors.

Harbor Grace—St Patrick's Free School, (Boys). Teacher—

BOARDS UNDER EDUCATION ACT.

St John's—The Right Rev John T. Mullock, D. D; John Kent, Honorables Laurence O'Brien, and Patrick Kough; and Richard Howley.

Harbor Grace, Carbonear, Bay-de-Verds, and Trinity South and West—The Right Rev Dr Dalton, Joseph Ryan, John McCarthy, William Brown, William Donnelly, Patrick Devereux, and James L. Prendergast.

Brigus—The Rev E. O'Keefe, Richard Mandeville, and James Cormack.

Harbor Maine—Very Rev Kyran Walsh, V.G., and Patrick Strapp, William Holden, and Richard Woodford.

Trinity Bay North—The Right Rev Dr Dalton, Rev J. Scanlan, and M. Brine, John Murphy, P. Murphy, John Egan, and John Power.

Bonavista Bay South—The Right Rev Dr Dalton, Rev M. Scanlan, and William Hartery, James Connors, Michael Murphy, John Ryan, and John Murphy.

Fogo—The Right Rev Dr Dalton, Rev P. Ward, and John Brine, John Burke, Patrick Burke, Patrick Dwyer, and J. Fitzgerald.

Ferryland—Rev James Murphy, Rev William Forristall, and Michael Devereux, J. Doyle, J. Cashin, Henry O'Neil, and Philip Jackman.

Bay Bulls—The Rev P. Cleary, and Martin Williams, Martin Driscoll, Michael Driscoll, J. Blackler, Michael Carey, (Witless Bay) and Thomas Gatherall, (Balline).

Great Placentia—The Rev E. Condon, and Michael J. Kelly, F.L. Bradshaw, John Riley, jr, and Thomas Riley, sr.

Little Placentia—The Rev Pelagius Nolan, and Thomas Freeman, Alexander Burke, John Riley, and Thomas Keits.

Placentia West—The Rev James Walsh, and Thomas Sullivan, Timothy Connors, Daniel Ryan, and Denis Ryan.

St Mary's—The Rev J. Ryan, and J. Walsh, Thomas Phelan, John Grace, William Burke, Michael Fagan, and James Murphy.

Trepassey—The Rev John Ryan, and James Waddleton, John Tobin, James Devereux, John Neill, jr, and John Hewett.

Burin—The Rev John Cullen, Patrick Morris, Richard Marshall, John Power, Matthew Marshall, Edward Morris, and William Fitzpatrick.

Fortune Bay—The Rev E. Brennan, Rev John Cullen, Rev J. Fripps, and P. Burke, W. Burke, P. Burke, jr, T. Kinshela, and T. Hearne.

Inspector of Schools under Roman Catholic Colonial Boards—Michael J. Kelly.

**ECCLIESIASTICAL DEPARTMENT,
CHURCH OF ENGLAND.**

The Right Reverend EDWARD FELD, D.D., Lord Bishop of Newfoundland. The Venerable Henry Martin Lower, M.A., Archdeacon and Ecclesiastical Commissary.

Deanery of Avalon—Rev. Robert Temple, Ferryland. Rev. George M. Johnson, Petty Harbor. Rev. Benjamin Fleet, Fox Trap. Rev. Algernon Gifford, Portugal Cove. Ven H. M. Lower, M.A., Rev. J. F. Phelps, St. John's; Rev. John Pearson, South Side; Rev. Thomas M. Wood, (Rural Dean) St. Thomas's. Rev. C. Palairt, M.A., Topsail.

Deanery of Conception Bay—Rev. M. Blackmore, (Rural Dean) Bay Roberts. Rev. James C. Harvey, Port-de-Grave. Rev. W. J. Hoyles, Carbonear. Rev. Bertram Jones, Harbor Grace. Rev. Oliver Rouse, Bay-de-Verd. Rev. William Shannon, Brigus. Rev. Julian Moreton, Island Cove.

Deanery of Trinity Bay—Rev. George Gardner, Heart's Content. Rev. W. Kirby, King's Cove. Rev. W. J. Milner, Greenspond. Rev. William Netten, Catalina. Rev. A. E. C. Bayly, Bonavista. Rev. Benjamin Smith, (Rural Dean) Trinity.

Deanery of Notre Dame Bay—Rev. Thomas Boone, (Rural Dean) Twillingate. Rev. Josiah Darrell, Herring Neck. Rev. R. M. Johnson, Fogo. Rev. George Tucker, B. A., Moreton's Harbor.

Deanery of Placentia Bay—Rev. William Rozier, Burin. Rev. William F. Meek, Harbor Buffett. Rev. A. E. Gabriel, Lamaline.

Deanery of Fortune Bay—Rev. George H. Hooper, LaPoile. Rev. Henry Lind, St. George's Bay. Rev. Edward Colley, Hermitage Bay. Rev. John Cunningham, Burgeo. Rev. W. W. LeGallais, Channel. Rev. John Marshall, Belleoram. Rev. William K. White, (Rural Dean) Harbor Briton.

Labrador—Rev. E. Botwood, Forteau. Rev. George Hutchinson, M. A., Battle Harbor.

Theological Institution—Principal—Ven H. M. Lower, M.A. Vice-Principal—Rev. Joseph F. Phelps. Students—John Noel, W. Shears, John Goodacre Cragg, George Seymour Chamberlain, Charles Rock West.

Newfoundland Church Society—Patron—His Excellency the Governor. President—The Right Rev. the Lord Bishop of Newfoundland. Vice-President—The Rural Deans. Treasurer—F. C. K. Hepburn. Secretary—Rev. John Pearson. Committee—Eugenius Harvey, John Tunbridge, F. B. T. Carter, J. C. Withers, C. Crowdy, M. D. W. Rendell, Hon. H. W. Hoyles, J. B. Wood, K. McLea, jr., John Winter, M. D., John H. Warren, Henry K. Dickinson, T. Bennett, J. P., George J. Hayward, Hon. Judge Robinson.

ROMAN CATHOLIC CHURCH

Diocese of St. John's—Right Rev. JOHN THOMAS MULLOCK, D. D., Lord Bishop of St. John's

Very Rev. P. Cleary, Dean

Very Rev. K. Walsh, Vicar-General

Very Rev. A. Belanger, Vicar General

St. John's Cathedral—Right Rev. J. T. Mullock, D. D., Rev. Jeremiah O'Donnell, Rev. John Vereker, Rev. Thomas Byrne

St Patrick's, River Head—Rev Michael Walsh, Rev Thomas Cody.
 St John's College—Very Rev. Henry Carfagnini, D. D., O. S. F.,
 Rev. Richard O'Donnell.

Portugal Cove—Rev Thomas O'Connor.

Torbay—Rev Edward Troy.

Harbor Maine—Very Rev Kyran Walsh, V.G., Rev Wm. Walsh.

Witless Bay—Very Rev Dean Cleary, Rev Richard Dunphy.

Ferryland—Rev James Murphy.

Fermeuse—Rev William Forristall.

Trepassey—Rev John Ryan

St Mary's—Rev M. Hannebury

Placentia—Rev E. Condon

Little Placentia—Rev Pelagius Nowlan

Oliver's Cove, St Kyran's—Rev James Walsh

Burin—Rev John Cullen, Rev M. Berny

Harbor Briton—Rev E. Brennan

St Lawrence—Rev J. Fripps

Brigus—Rev E. O'Keefe

St George's Bay—Very Rev Alexander Belanger, V. G.

French Shore—Served annually by two Priests from France

College of St Bonaventure, St John's—Very Rev H. Carfagnini,
 O.S.F., D.D., President and Professor. Rev Richard O'Donnell,
 Director; Thomas Talbot, Professor of Classics and Belles Lettres;
 M. Fenlon, Professor of Science; P. Comerford, E. Bennett, and
 Sig Caylo, Professors of Spanish, Music, and Design.

Convents in the Diocese of St John's, 10.—St. Johns, 4; Brigus, 1;
 Harbor Maine, 1; St Mary's, 1; Witless Bay, 1; Ferryland, 1;
 Fermeuse, 1.

St Michael's Female Orphanage, St John's, Belveder—Nuns, 5;
 Orphans, 51.

Diocese of Harbor Grace—The Right Rev JOHN DALTON, D. D.,
 Lord Bishop of Harbor Grace; Rev J Walsh.

Carbonear—Rev John O'Connor.

Northern Bay—Very Rev Bernard Duffy, V. G.

King's Cove—Rev Matthew Scanlan

Bonavista—Rev J. Brown

Tilton Harbor—Rev Patrick Ward

Bay-de-Verds—(Vacant)

Presentation Convents in the Diocese of Harbor Grace, two; one
 at Harbor Grace and one at Carbonear.

CONGREGATIONAL CHURCH.

The Rev CHARLES PEDLEY, Queen's Road Chapel, St John's.

WESLEYAN METHODIST CHURCH.

The Rev EDMUND BOTTERELL, Chairman of the District: The Rev John S. Peach, Financial Secretary.

St John's—Rev Edmund Botterell, Rev John Waterhouse; Rev Adam Nightingale, Supernumerary.

Harbor Grace—Rev Christopher Lockhart

Carbonear—Rev Elias Brettle, Rev Thomas D. Hart

Brigus—Rev Thomas Harris

Port-de-Grave—Rev William E. Shenstone

Blackhead—Rev John S. Peach

Island Cove—Rev James Dove

Old Perlican—Rev John Goodison

Hant's Harbor—To be supplied

Trinity—Rev Alfred W. Turner

Bonavista—Rev Paul Prestwood, Rev Thomas Fox

Twillingate—Rev Charles Comben

Burin—Rev John S. Phinney

Grand Bank—Rev John Winterbotham

Missions of Conference.

Labrador—Supplied during Summer by the Rev Thomas Fox

Petites—Rev Charles Ladner

Charnel—Rev Joseph Gaetz

Exploits, Burnt Island—Rev James A. Duke

CHURCH OF SCOTLAND.

The Rev DONALD McRAE, St Andrew's Church, St John's

FREE PRESBYTERIAN CHURCH.

The Rev MOSES HARVEY, St John's

The Rev Alexander Ross, Harbor Grace

LAYMEN LICENSED TO CELEBRATE MARRIAGE.

Charles Harris, Muddy Hole. George Goodridge, Labrador

ST. JOHN'S AND NEWFOUNDLAND AUXILIARY BIBLE SOCIETY.

His Excellency the Governor, Patron. Hon Nicholas Stabb, President. Hon Hugh W. Hoyles, William Freeman, Stephen Rendell, John Macgregor, William Boyd, Vice-Presidents. Robert Brown, Treasurer. Thomas McConnan, Depositary. Rev Moses Harvey and John B. Bulley, Secretaries. Committee—Rev Edmund Botterell, Rev Charles Pedley, Rev Donald McRae, Rev John Waterhouse, N. Mudge, Dr Winter, Wm. Boyd, J. S. Rutherford, J. O. Fraser, J. Murray, J. Seaton, J. Pitts, A. Whiteford, R. L. Muir, James Bayly, Joseph Woods, Hon Peter G. Tessier, E. L. Jarvis, Richard Neyle, John Woods, John B. McLea, G. Browning, Richard Brace, J. Baird, R. Grieve, and all Clergymen being members of the Society.

RELIGIOUS TRACT AND BOOK SOCIETY.

James Bayly, President; Gustav Ehlers, Vice-President. Robert Brown, Treasurer. J. W. Marriott, Secretary. Committee—Rev Donald McRae, Rev Moses Harvey, Rev Charles Pedley, Rev Edmund Botterell, Hon Hugh W. Hoyles, John B. Bulley, Stephen Rendell, John Macgregor, James Seaton, James J. Rogerson, William Boyd, Hon E. White, Thomas R. Smith, Thomas G. Morry. Depository—Mrs Trehear.

SEAMEN'S MISSION AND HOME SOCIETY.

Hon Hugh W. Hoyles, Chairman; James Bayly, Secretary; R. Brown, Treasurer. Committee—Hon Nicholas Stabb, Dr Winter, James J. Rogerson, Stephen Rendell, Frederick B. T. Carter, Alan Goodridge, William Killigrew, Stephen March, John B. Bulley, W. V. Whiteway, John Macgregor, James Seaton, William Boyd.—Ex-officio members—The Chairman and Secretary of the Corresponding Committee, and Inspector of Schools of the Colonial and Continental Church Society. Lay Missionary—George Stokes.

YOUNG MEN'S CHRISTIAN ASSOCIATION.

Rev Charles Pedley, President. Rev Moses Harvey, Rev Donald McRae, and all Ministers members of the Society, Vice-Presidents. Robert Blackwood, Treasurer. Henry P. Heath, Secretary. A. Forbes, Librarian. Committee—G. Whitten, T. Wood, G. Mews, J. Green, J. Muir.

CHAMBER OF COMMERCE.

St. John's—F. C. K. Hepburn, President. H. K. Dickinson and Hon P. G. Tessier, Vice-Presidents. Ewen Stabb, Treasurer and Secretary. Hon. N. Stabb, Hon. L. O'Brien, Gustav Ehlers, John Bowring, Eugenius Harvey, Hon James S. Clift, Hon K. McLea, W. H. Mare, J. Macgregor.

Manager of Commercial Rooms—Matthew H. Warren.

BANKS.

UNION BANK OF NEWFOUNDLAND.

Directors—Hon L. O'Brien, John Macgregor, Henry K. Dickinson, Eugenius Harvey, Robert Grieve.

John W. Smith, Manager. Randal Greene, Accountant and Teller. Charles S. Pinsent and John Noon, Clerks. Hon Hugh W. Hoyles, Q.C., Solicitor.

Discount Days—Mondays and Thursdays, from 12½ o'clock.

Hours of Business—From 10 a.m., to 3 p.m.

COMMERCIAL BANK OF NEWFOUNDLAND.

Directors—Francis C. K. Hepburn, Stephen Rendell, John Bowring, Gustav Ehlers, Hon Kenneth McLea.

Robert Brown, Manager. Peter P. LeMessurier, Teller. William Walsh, Clerk. William B. Dryer, Clerk and Messenger. F. B. T. Carter, Q. C., Solicitor.

Discount Days—Tuesdays and Fridays, from 12½ to 1½ o'clock.

Hours of Business—From 10 a.m., to 3 p.m.

NOTARIES PUBLIC.

St John's—Charles Simms, Hon George H. Emerson, Hon Hugh W. Hoyles, Robert Prowse, George F. Bown, Henry Devereux, Frederick B. T. Carter, William J. Ward, Robert R. W. Lilly, Hon Edward Morris, George J. Hogsett, William H. Mare, John Little, Samuel G. Archibald, Matthew W. Walbank, Thomas J. Kough, William V. Whiteway, John B. Cormack, Hon Nicholas Stabb, Matthew H. Warren, Charles S. Warren, Hon Robert J. Pinsent, Alexander Stuart, Richard B. Holden, Thomas H. Mabin, Roger F. Sweetman.

Outports—Harbour Grace—John Hayward, Andrew Drysdale, Henry A. Clift, Lewis W. Emerson. Carbonear—Henry C. Watts. Twillingate—John Peyton. Burin—William Hooper. Brigus—William S. Mills. Bay Roberts—George W. R. Hierlihy. Laminé—Clement Benning.

FOREIGN CONSULATES.

United States of America—William S. H. Newman, Consul for Newfoundland.

Kingdom of Spain—Don Hipolito de Uriarte, Consul for Newfoundland; Vice-Consuls—St John's—Charles F. Ancell; Harbour Grace—T. Harrison Ridley; Consular Agents—Twillingate—John Peyton; Greenspond—James L. Noonan; Cape Charles—Israel McNeil; Dead Island—Nicholas Payne; Long Island—William Junott.

Empire of Brazil—Stephen Rendell, Vice-Consul for Newfoundland. Commercial Agents—John Munn, Harbour Grace; William Kelson, Trinity.

Kingdom of Portugal—Charles F. Bennett, Consul General for Newfoundland. Vice-Consuls—Charles T. Bennett, St. John's; John Munn, Harbour Grace; William Hooper, Burin; R. F. Sweetland, Placentia; Charles Edmonds, Twillingate.

Kingdom of Prussia—Robert Prowse, Consul for St. John's; D. W. Prowse, Consular Agent.

Hamburgh—Robert Prowse, Consul; D. W. Prowse, Consular Agent.

Empire of France—J. C. Toussaint, Vice-Consul for Newfoundland.

MILITARY ESTABLISHMENT.

Officer Commanding the Troops—Lieut-Colonel J. J. Grant, Royal Newfoundland Companies. Garrison Staff—Acting Staff Officer, Ensign and Adjutant, W. Gillmor, RNC. Acting Garrison Chaplain—Rev T. M. Wood. Garrison Staff Clerk—Sergeant M. Gilligan.

Military Store Department—Assistant Superintendent of Stores and Acting Barrack Master, J. Tunbridge. Established Clerk, N. Hanmer. Barrack Sergeants, H. Hawkins, P. O'Connor. Storehouse-man, F. Scott. Warder, W. Hammond. Wharfinger, (Queen's Wharf,) W. Francis.* Office Messenger, A. Devanna.

* See Wharfinger's printed Instructions posted at the Gate for general information.

Commissariat Department—Assistant Commissary General, D. Clarke. Temporary Clerk, C. P. Withell. Assistant Store-keeper and Issuer, J. Devlin. Office Messenger, — —

Royal Engineer Department—Commanding Royal Engineers. Capt. T. A. L. Murray. Attached to Engineer Office and Department—Clerk of Works, William Pearse. Engineer Clerk, (temporary) L. Hanmer. Office Messenger, G. Clarke.

Royal Newfoundland Companies—Lt Colonel J. J. Grant. Captains, Thomas Hanrahan, A. S. Quill. Lieutenants, D. E. Daly, W. J. Coen. Ensigns, W. Gillmor, William Cavanagh. Adjutant and Acting Quarter Master, W. Gillmor. Acting Pay Master, W. J. Coen, Lieut. Assistant Surgeon (Regimental Hospital), Leslie O. Patterson, in Medical charge; Staff Assistant Surgeon, E. H. Lloyd, M.B. School Master, 2nd Class, W. Gell; School Mistress, Mrs. Gell.

Detachment 62nd Regiment—Capt. — —. Lieutenants Machell and Mesham. Ensign Pagan.

Posts and Works—St John's, (North Side)—Fort Townshend, Fort William; Signal Hill, Storehouses, Magazine and Armoury; Queen's, Waldegrave, Chain Rock, Wallace's, and Quidi Vidi Batteries; Military Store Yard, Commissariat House, Office, Fuel Yard and Garrison Bakery, Queen's Wharf, Commissariat and Military Store Houses there inclusive; Engineer House, Office, Workshops and Yard. South Side—Fort Amherst and Magazine.

N.B.—Morning, Noon, and Evening, Guns are fired daily from Queen's Battery, as also an Alarm Gun on occasion of Fire in Town; Fort Amherst fires Fog Guns every hour, when necessary, as also two Guns for Vessels when in Distress at Sea.

NOMINAL LIST OF OFFICERS OF THE VOLUNTEER RIFLE COMPANIES IN NEWFOUNDLAND.

ST. JOHN'S.

No. 1 Company—Captain, Stephen Rendell. Lieutenant, Henry K. Dickinson. Ensign, Nicholas Mudge. Surgeon, James N. Fraser, M.D. Secretary, J. Yelland.

No. 2 Company—Captain, Gustav Ehlers. Lieutenant, Matthew W. Walbank. Ensign, John Mortimer. Surgeon, W. C. Simms, M.D.

No. 3 Company—Captain, Hon. James S. Clift. Lieutenant, Robert Thorburn. Ensign, Robert Dicks.

No. 4 Company—Captain, Henry Renouf. Lieutenant, Michael E. Phelan. Ensign, John T. Barron.

No. 5 Company—Captain, John Kavanagh. Lieutenant, George J. Hogsett. Ensign, Robert J. Kent.

DISTRICT OF CONCEPTION BAY.

No. 1 Harbor Grace Volunteer Rifle Company—Captain, John Hayward. Lieutenant, Henry T. Moore. Ensign, Robert Munn.

N A V A L .

Commander-in-Chief on the West India and North American Station—Rear Admiral Sir Alexander Milne, K.C.B.

Royal Naval Dock Yard, South Side, St John's.

NEWFOUNDLAND TARIFF OF DUTIES.

Articles	Duty in stg.
	£ s d
Ale, Porter, Cider, and Perry, viz :—	
In Bottles, the Dozen of 2 Gallons	0 0 9
In Casks, the Gallon	0 0 3
Bacon, Hams, Smoked Beef, and Sausages—the Cwt.	0 7 6
Beef, salted and cured—the barrel of 200 lbs.....	0 2 0
Biscuit or Bread—the cwt.	0 0 3
Butter—the cwt.	0 3 0
Cheese—the cwt	0 5 0
Chocolate and Cocoa—the lb	0 0 1
Cigars—the M	0 10 0
Coffee—the lb	0 0 1
Feathers and Feather Beds—the lb	0 0 1
Flour—the brl	0 1 6
Fruits, dried—the lb	0 0 1
Fruits, other descriptions—the £100	10 0 0
Molasses—the gallon	0 0 2½
Oatmeal and Indian Meal—the brl	0 0 6
Pork—the brl of 200 lbs	0 3 0
Salt—the ton	0 0 6
Shooks and Staves, manufactured or dressed—the £100	10 0 0
Spirits—Brandy, Gin, Whiskey, or other Spirits not herein defined or enumerated, not exceeding the strength of proof by Sykes's Hydrometer, and so in proportion for any greater strength than the strength of proof—the gallon	0 4 0
Rum ditto ditto—the gallon	0 1 6
Cordials, Shrub, and other Spirits being sweetened or mixed so that the degree of strength cannot be ascertained as aforesaid—the gallon	0 2 0
Sugar—Loaf and refined—the cwt	0 12 0
Unrefined	0 7 6
Bastard	0 7 6
Tea—the lb.	0 0 4
Tobacco—manufactured and leaf—the lb.	0 0 3
Tobacco Stems—the cwt.	0 2 0
Vinegar—the gallon	0 0 3
Wines of all kinds—In bottles (except Claret)—the gallon	0 5 0
Wines in wood and other vessels, not being bottles, viz :—	
Port, Madeira, Hock, Burgundy—the gallon	0 4 0
Sherry—12½ per cent. ad valorem—and the gallon	0 2 6
Claret—in wood or bottles—the gallon	0 2 0
All other Wines—the gallon	0 2 0
Anchors, Barley and Oats, Canvass, Cordage and Cables, Copper and Composition Metal for Ships, viz :—Sheathing, Bar, Bolt and Nails ; Corks and Corkwood, FishingTackle, IndianCorn ; Iron, viz, Bar, Bolt, Sheathing and Sheet, Wrought Nails ; Medicines, Oakum, Peas, Pitch, Tar, Turpentine and Rosin ; Poultry and Fresh Meat—the £100	5 0 0

Goods, Wares, and Merchandize not otherwise enumerated, described, or charged with duty in this Act and not otherwise exempt—the £100 10 0 0

Fish—salted, dried, or pickled, for every cwt. imported 0 5 0

LOCAL DISTILLATION.

Rum, not exceeding the strength of proof by Sykes's Hydrometer, and so in proportion for any greater strength than the strength of proof—the gallon 0 0 8

Brandy, Gin, or other Spirits not herein defined or enumerated, not exceeding the strength of proof by Sykes's Hydrometer, and so in proportion for any greater strength than the strength of proof—the gallon 0 1 0

TABLE OF EXEMPTIONS.

Printing Presses, Printing Paper, (Royal and Demy) Types, and all other Printing Materials

Printed Books, Pamphlets, Maps and Charts

Coin and Bullion

Hemp, Flax, Tow

Plants, Trees and Shrubs

Specimens illustrative of Natural History

Works of Art, viz :—Engravings, Paintings, Statuary, and all articles imported for religious purposes and not intended for sale

Manures of all kinds

Arms, Clothing, and Provisions for Her Majesty's Land and Sea Forces

Passengers' Baggage, Household Furniture, and Working Tools and Implements used and in the use of Persons arriving in this Island

Refuse of Rice

Seeds for Agricultural purposes

Vegetables of all sorts

Animals of all kinds

Articles of any description imported for the use of the Governor

Donations of Clothing specially imported for distribution gratuitously by any charitable Society

Cotton Yarn, Pig Iron, Coke.

TABLE OF EXEMPTIONS UNDER TREATY WITH THE UNITED STATES.

Grain, Flour and Breadstuffs, of all kinds

Animals of all kinds

Fresh, Smoked, and Salted Meats

Cotton, Wool, Seeds and Vegetables

Undried Fruits, Dried Fruits

Fish of all kinds

Products of Fish and all other creatures living in the water

Poultry, Eggs

Hides, Furs, Skins, or Tails—undressed

Stone or Marble, in its crude or unwrought state

Slate

Butter, Cheese, Tallow, Lard

Horns, Manures

Ores of Metals of all kinds; Coal

Pitch, Tar, Turpentine ; Ashes
 Timber and Lumber, of all kinds, round hewed and sawed—manu-
 factured in whole or in part
 Firewood, Plants, Shrubs and Trees
 Pelts, Wool ; Fish Oil
 Rice, Broom Corn and Bark
 Gypsum—ground or unground
 Hewn or wrought or unwrought Burr or Grindstones
 Dye Stuffs
 Flax, Hemp, Tow—unmanufactured
 Unmanufactured Tobacco ; Rags

—So long as the said Treaty between Great Britain and the United States of America, in the recited Act mentioned, shall remain in force in this Island ; and similar Articles, being the growth, produce, and manufacture of the United Kingdom, British North American Provinces, or of the Island of Prince Edward, or the Channel Islands, shall be admitted Duty Free, notwithstanding any law to the contrary.

All Yachts sailing under Warrant of the Lords of the Admiralty, or belonging to the Royal Yacht Club, shall be exempted, on view of the said Warrant, from payment of all Local Duties whatsoever.

REVENUE AND EXPENDITURE FOR THE YEAR 1860

Revenue	£133,608	1	7
Expenditure	120,728	4	2

SHIPS OWNED AND REGISTERED IN NEWFOUNDLAND

Number of Vessels	1,394
Tonnage	92,639

VALUE OF IMPORTS AND EXPORTS IN '56, '57, '58, '59, '60

	1856	1857	1858	1859	1860
Imports	£1,271,604	£1,413,432	£1,172,862	£1,324,136	£1,254,128
Exports	1,338,797	1,651,171	1,318,836	1,357,113	1,271,712

ABSTRACT FROM NEWFOUNDLAND CENSUS, OF 1857.

Names of Districts.	Number of Inhabitants.	No. of Males	No. of Females	No. of Various Religious Denominations							
				Church of England.	Catholics	Wesleyans	Kirk of Scotland	Free Kirk	Congregationals.	Other Denominations	
St. John's, East	17352	8757	3595	3493	11867	1303	208	256	225		
St. John's, West	13124	6701	6423	2162	10033	579	82	169	92		7
HarborMaine(ConceptionBay)	5386	2789	2597	1160	4153	71	2				
Port-de-Grave ditto	6489	3349	3140	2726	1637	2112	1				13
Harbor Grace ditto	10067	5285	4782	5490	3390	1112	2	73			
Carbonear ditto	5233	2675	2558	791	2582	1859					
Bay-de-Verds ditto	6221	3274	2947	446	1583	4191		1			
Trinity Bay	10736	5618	5118	6016	1253	3460		4	2		1
Bonavista	8850	4705	4145	5714	2030	1083		9	14		
Twillingate and Fogo	9717	5167	4550	6232	1442	2036		7			
Ferryland	5228	2776	2452	127	5093	8					
Placentia and St. Mary's	8334	4434	3900	966	7156	208		4			
Burin	5529	3005	2524	1356	2354	1810		1			7
Fortune Bay	3492	1994	1499	2787	647	30					29
Burgeo and LaPoile	3545	1961	1584	3172	89	282		2			
Totals	119304	62490	56814	42638	55309	20144	302	520	347		44
French Shore	3334	1778	1556	1647	1586	85				16	

The Census of the Labrador was cursorily taken by the late Superintendent of Fisheries (James L. Prendergast, Esquire,) in 1856 and 1857, but it is not sufficiently correct or full to form a part of the foregoing Returns. The number of permanent residents, as given by that gentleman, from L'Anse Sablon to Sandwich Bay, both inclusive, including Belle Isle, is 1650, of whom 1331 are Protestants and 319 Catholics.

TOTAL VALUE,

In Sterling, of the Imports and Exports of the Colony of Newfoundland, from and to each Country, in the Year 1860.

COUNTRIES.	IMPORTS THEREFROM	EXPORTS THERETO
United Kingdom	£489,969	£353,025
British Colonies, viz. :		
Jersey	13,231	15,781
Canada	42,423	10,320
Nova Scotia	140,237	39,442
New Brunswick	2,702	784
P. E. Island	20,746	1,614
British W. Indies	37,107	86,363
Mauritius		6,067
Foreign Countries, viz. :		
Hanse Towns	74,592	
Spain	11,144	197,595
Portugal	11,121	155,553
Italian States	508	34,239
Sicily		4,050
Malta		3,214
Ionian Islands		1,388
United States	364,733	81,800
Foreign W. Indies	44,406	51,217
Brazil	44	229,068
St. Peters	1,167	172
Total	£1,254,128	£1,271,712

FIRE, LIFE AND MARINE INSURANCE COMPANIES.

Phoenix Fire Insurance Company of London—Agents for Newfoundland, W. & G. Rendell, St. John's.

Agents for Lloyds—Brooking, Son & Co., St. John's. Thomas Ridley & Sons, Harbor Grace. Philip De Quintville, Labrador. John P. Frecker, St. Pierre.

Colonial Life Assurance Company—Registered and Empowered under Act of Parliament 7 and 8 Vic. Cap. 110. Capital, £500,000: St. John's Branch, Walter Grieve and Hon. L. O'Brien, Directors; George T. Brooking, Agent.

Alliance British and Foreign Life and Fire Assurance Company, London. Capital, £5,000,000, sterling. Brooking, Son & Co., Agents for Newfoundland.

The Royal Insurance Company, for Fire, Life and Annuities.—Royal Insurance Buildings, Liverpool; and 29 Lombard Street, London. Capital, £2,000,000, sterling. Job, Brothers & Co., Agents, Newfoundland Branch.

Liverpool and London Fire and Life Insurance Company—Established 1836. Capital, £2,000,000 sterling. Invested fund, £1,213,337. Income £450,000. Bowring, Brothers, Agents for Newfoundland.

Britannia Life Assurance Office, London—St. John's Branch, D. W. Prowse, Agent.

Queen Insurance Company, for Fire and Life—General Agent for Newfoundland, D. W. Prowse.

St. John's Marine Insurance Company—Incorporated by Act of Local Legislature, 1853. Committee—Charles F. Bennett, John Bowring, F. C. K. Hepburn, Stephen Reidell, James Howe, Hon. Nicholas Stabb, Gustav Ehlers, Hon P. G. Tessier, Henry K. Dickinson. John B. Bulley, Agent. Hon. John Bemister, Surveyor.

Newfoundland Marine Assurance Company—Capital, £25,000.—Directors—Alan Goodridge, President; Hon. James S. Clift, Walter Grieve, Hon. Peter G. Tessier, John Macgregor, William Killebrew, Hon. Laurence O'Brien, Henry K. Dickinson, Hon. Kenneth M'Lea. Edward L. Jarvis, Secretary. James Pitts, Surveyor.

International Life Assurance Society, of London—Capital, £500,000 sterling, in addition to about £100,000 currency, of reserved profits. Directors—Hon. Hugh W. Hoyles, Chairman; Charles F. Bennett, Ewen Stabb, Ambrose Shea. Frederick B. T. Carter, Q.C., Solicitor. Hon Nicholas Stabb, General Agent for Newfoundland.

Imperial Fire Insurance Company, of London—Established 1803. Capital subscribed and invested, £1,600,000. Agent for St. John's, Thomas G. Morry.

Star Life Assurance Society, Chief Office, 48, Moorgate Street, London. St. John's—W. C. Simms, M.D., Medical Referee. Agent for Newfoundland, Joseph Woods.

Baltimore Underwriters, Boston Underwriters—Twelve Offices. Attorney and Agent for Newfoundland, W. H. Newman.

Boards of Underwriters of the Cities of New York and Philadelphia. Attorney and Agent for Newfoundland, W. H. Newman.

Liverpool Underwriters' Association—Ridley & Sons, Harbor Grace, Agents.

Albert Medical & Family Endowment Life Assurance Company, with which is combined the Kent Mutual Assurance Society, London. Established 1838.—William J. Ward, Agent at St. John's for Newfoundland, Cape Breton and P. E. Island. Medical Examiners, Drs Crowdy & Simms. Solicitor, F. B. T. Carter, Q. C. Bankers, Commercial Bank of Newfoundland.

Mutual Marine Insurance Club of Conception Bay—John Fitzgerald, Secretary.

Mutual Insurance Society of Brigus, Conception Bay—Jonathan Percy, Treasurer and Secretary.

JOINT STOCK COMPANIES, PUBLIC SOCIETIES, &c.

New York, Newfoundland, and London Telegraph Company—Directors in New York—Peter Cooper, Moses Taylor, Cyrus W. Field, Marshal O. Roberts, Wilson G. Hunt.

Peter Cooper, President. Cyrus W. Field, Vice-President.—Moses Taylor, Treasurer. David D. Field, Counsel. Alexander M. Mackey, Local Manager, St. John's, and Superintendent.

St. John's Gas Light Company—Directors—John Bowring, President; Stephen Rendell, Vice-President; Hon Laurence O'Brien, Richard O'Dwyer, Gustav Ehlers, Hon Hugh W. Hoyles, David Selater. William F. Rennie, Secretary.

General Water Company—Incorporated 1859. Directors, Ambrose Shea, President; F. C. K. Hepburn, Stephen Rendell, Hon Robert Kent, Hon Laurence O'Brien, Ewen Stabb, (Government Director). Hon Hugh W. Hoyles, Q. C., Solicitor. William J. Ward, Secretary.

St. John's Athenæum—Hon Nicholas Stabb, President. John Bowring and Hon R. J. Pinsent, Vice-Presidents. E. L. Moore, Curator of Museum. E. M. J. Delaney, Curator of Apparatus. D. W. Prowse, Secretary. E. B. Moore, Librarian and Superintendent of Rooms. Committee—A. Scott, W. Boyd, W. Pitta, R. T. Rankin, J. M'Kinlay, H. Bevins, L. Tessier, A. Taylor, G. Lash. Commercial Bank of Newfoundland, Bankers.

St. John's Debating Club—Hon H. W. Hoyles, President. D. W. Prowse and H. T. Wood, Vice-Presidents. C. E. L. Jarvis, Treasurer. J. Nightingale, Secretary.

Masonic—Hon James S. Clift, D. P. G. Master. John G. James, P. G. Secretary. Officers of St. John's Lodge, No 844—John Mortimer, W.M. N. S. Stabb, S.W. G. Browning, J.W. George Lash, Treasurer. John G. James, Secretary. R. T. Rankin, S.D. John Hellyer, J.D. Thomas Wescott, J.G. John Wilkinson, Tyler. John Magor and James S. Rutherford, Stewards. G. F. Bown, Chairman of Committee of Charity.

Officers of Avalon Lodge, No. 1078—R. Grieve, W.M. W. V. Whiteway and J. N. Fraser, P.M. Theodore Clift, S.W. F. G. Bunting, J.W. A. F. Shirran, S.D. A. Scott, J.D. R. Thorburn, Treasurer.

Agricultural Society—His Excellency the Governor, Patron.—John Tunbridge, President. William V. Whiteway, George F. Bown, Dr. Winter, C. S. Warren, Vice-Presidents. Joseph Crowdy, Treasurer. W. F. Rennie, Secretary.

Newfoundland Fishermen's Society.—Charles Power, President. Terence Hallern, Vice-President. William Coady, Assistant Vice-President. James McLaughlin, First Treasurer. Thomas Duff, Second Treasurer. James Glindon, Third Treasurer. Laurence Barron, Secretary. Michael Keefe, Assistant Secretary.

Floating Dry Dock Company—Stephen Rendell, President. Gustav Ehlers, Vice-President. Pierce Feehan, Robert Grieve, Robert Alexander, William B. Bowring, Hon Peter G. Tessier, Directors.

St. John's Phoenix Volunteer Fire Company—Francis Boggin, First Director. Samuel Loveys, Second Director. Patrick Reardon, Treasurer. Philip Hally, Secretary.

Cathedral Fire Brigade.—Patrick O'Sullivan, First Director.—William McGrath, Second Director. Treasurer and Secretary, John Donnelly.

Manufactories, Mills, Works, &c.—St. John's—2 Corn Mills, 2 Saw Mills, 1 Bone Mill, 1 Gas Manufactory, 1 Iron Foundry, 1 Brewery, 1 Water Works, 2 Seal Oil Manufactories, (by machinery) 2 Bakeries, (by machinery), 1 Patent Slip, 1 Floating Dock. Brigus—1 Corn Mill. Harbor Grace—1 Corn Mill, 1 Gas Manufactory. Exploits Bay—2 Saw Mills. Middle Arm of Green Bay—1 Saw Mill. Exploits (Burnt Island)—2 Saw Mills. Hall's Bay—2 Saw Mills. Trinity Bay—5 Saw Mills.

BENEVOLENT AND CHARITABLE SOCIETIES, &c.

Benevolent Irish Society—Founded in 1806. The Right Rev Dr Mullock, Patron. Hon L. O'Brien, Vice-Patron. Hon Edward Morris, President. Hon Robert Kent, Vice-President. Thomas S. Dwyer, First Assistant. John Kitchin, Second Assistant. John Kavanagh, Treasurer. James Healy, Secretary. John Power, Chairman Orphan Asylum. John O'Donnell, Chairman of Charity. John Rawlins, Chairman of Review and Correspondence. Robert J. Kent, Secretary Orphan Asylum School.

Church of England Asylum for Widows and Orphans—His Excellency the Governor, Patron The Right Rev Dr. Feild, Visitor and President. The Venerable Archdeacon Lower, M.A., Rev T. M. Wood, Vice-presidents. The Right Rev the Visitor and President (*ex officio*). Henry K. Dickinson, John Winter, M.D., Trustees. Francis C. K. Hepburn, Treasurer. John Tunbridge, Honorary Secretary. Charles Crowdy, M.D., Physician. Committee—Judge Robinson, Hon Hugh W. Hoyles, Philip Hutchins, Kenneth McLea, jr., Rev G. M. Johnson, James Hayward, William H. Mare, John Hogsett, F. B. T. Carter, Thomas Clift.

St. John's Factory—Honorable Laurence O'Brien; Thomas Glen, James J. Rogerson, Edmund Hanrahan, Trustees.

Newfoundland Natives' Society—Hon Hugh W. Hoyles, President. Thomas G. Morry, First Vice-President. Frederick B. T. Carter, Second Vice-President. James S. Clift, Treasurer. Dr. Dearn, Chairman of Review and Correspondence. William Freeman, Chairman of Relief. William Pitts, Secretary. Randal Greene, Assistant Secretary.

St. George's Society—George F. Bown, President. George T. Rendell and John C. Withers, Vice-Presidents. Henry T. Wood, Treasurer. F. C. Jagg, Secretary. Committee of Charity—The above-named officers, and the Ven. Archdeacon Lower, Revs T. M. Wood, J. Pearson, J. Phelps; Thomas R. Smith, James Bayly, Henry K. Dickinson, W. Rendell, L. Tessier, D. W. Prowse. Physician—Dr. H. H. Stabb.

St. Andrew's Society—Hon Kenneth McLea, President. Robert Grieve, Vice-President. James Baird, Treasurer. James N. Neilson, Secretary. Committee of Charity—Charles Rankin, Robert Blackwood, and Robert Peace.

Newfoundland British Society—Nathaniel Hill, President. Henry W. Seymour, Vice-President. Joseph Gribble, Treasurer. Edward Knight, Secretary.

Society of St. Vincent de Paul—John Little, President. Edward Power, Vice-President. John Rawlins, Assistant Vice-President.—William Kitchin, Treasurer. William Doughty, Secretary.

Grand Division of the Sons of Temperance—Robert Peace, G.W.P. Lionel T. Chancey, G.W. A. Ebenezer Brace, G. Scribe. James Rooney, G. T. James T. W. Crosby, G. Chaplain. John Hughes, G. Con. ——— McIntire, G. Sen.

Mechanics' Society—John Maher, President. John Power, Vice-President. Patrick Dealy, First Assistant. Edward Ryan, Second Assistant. Valentine Merchant, First Treasurer. James Keough, Second Treasurer. Thomas Whelan, Third Treasurer. Charles O'Brien, Secretary.

Dorcas Society, St John's—Mrs John B. Bulley, President and Treasurer. Mrs. Christopher Brown, Secretary. Mrs Botterell, Mrs Brown, Mrs Stabb, Dispensers.

Dorcas Society, Harbor Grace—Mrs Drysdale, President and Treasurer.

Dorcas Society, Carbonear—Mrs Brettle, President and Treasurer.

Benevolent Irish Society, Conception Bay—Founded in 1814.—The Right Rev. Dr. Dalton, Patron. John Fitzgerald, President. Patrick Devereux, Vice-President. Andrew T. Drysdale, First Assistant. William Howlett, Second Assistant. Robert Walsh, Treasurer. Patrick Walsh, Secretary. James Bulger, Chairman of Charity.

Trinity Benefit Club—Instituted 1838. William Kelson, Treasurer

THE ROYAL FAMILY OF GREAT BRITAIN.

QUEEN ALEXANDRINA VICTORIA (only child of Edward Duke of Kent, who died January 23, 1820), born May 24, 1819; proclaimed June 21, 1837; crowned June 28, 1838; married February 10, 1840, to her cousin, Albert Francis Augustus Charles Emanuel, of Saxe Coburg and Gotha, born August 26, 1819. Children :—

Victoria Adelaide Maria Louisa, Princess Royal, born November 21, 1840.

Albert Edward, Prince of Wales and Earl of Dublin, born November 9, 1841.

Alice Maud Mary, born April 25, 1843.

Alfred Ernest Albert, born August 6, 1844.

Helena Augusta Victoria, born May 25, 1846.

Louisa Carolina Alberta, born March 18, 1848.

Arthur William Patrick Albert, born May 1, 1850.

Leopold George Durcan Frederick, born April 7, 1853.

Beatrice Mary Victoria Feodore, born April 14, 1857.

HER MAJESTY'S CHIEF OFFICERS OF STATE.

THE CABINET.

First Lord of Treasury—Viscount Palmerston, K G
 Chancellor of the Exchequer—Right Hon W E Gladstone
 Secretary of State for Foreign Department—Earl Russell
 Secretary of State for the Home Department—Sir George Grey
 Secretary of State for the Colonies—The Duke of Newcastle
 War Secretary—Sir G. Cornwall Lewis
 President of the Indian Board—Sir C Wood, G C B
 First Lord of the Admiralty—The Duke of Somerset
 Lord Chancellor—Lord Westbury
 President of the Council—The Earl of Granville, K G
 Privy Seal—The Duke of Argyll, K T
 President of the Board of Trade—Right Hon T Milner Gibson
 Chancellor of the Duchy of Lancaster—Rt Hon Edward Cardwell

IRELAND.

Lord Lieutenant—Earl of Carlisle
 Chief Secretary—Right Hon Sir Robert Peel
 Lord Chancellor—Right Hon M. Brady

[The following information should have appeared in the "Judicial Department," but was not supplied in time.]

Commissioners for Issuing Mesne and Final Process and Subpœnas returnable into the Supreme and Circuit Courts of Newfoundland, for taking Affidavits in either of the said Courts, and for taking recognizance of Bail in any Suit depending in the said Courts.

CENTRAL DISTRICT.

St. John's—Charles Simms and Henry T. Wood.

NORTHERN DISTRICT.

Harbor Grace—John Fitzgerald. Port-de-Grave—John Wilcox. Hant's Harbor—James Mews. Old Perlican—William Christian. Trinity—Benjamin Sweetland. Bonavista—John Lawrence. Greenspond—George Skelton. Fogo—James M. Winter. Twillingate—John Peyton.

SOUTHERN DISTRICT.

Ferryland—Luke Brown. Placentia—Francis L. Bradshaw. Harbor Buffett—Thomas E. Collett. Burin—Edward L. Morris. Lamaline—Clement Benning. Grand Bank—Josiah Blackburn. Harbor Briton—Thomas E. Gaden. Burgeo—Richard Bradshaw. LaPoile—Thomas Reade.

Commissioners for taking Affidavits and recognizance of Bail in any suit depending in the said Courts.

NORTHERN DISTRICT.

Harbor Grace—Lewis W. Emerson. Carbonear—Thomas Newell. Brigus—Charles Cozens. Port-de-Grave—George Garland. New Harbor—Charles Newhook. Bay-de-Verd—Thomas Hutshings. Black Head—John Curtis. Chapel's Cove—John Murphy. Job's Cove—William Turner. Catalina—Alexander Bremner. Bonavista—William Sweetland.

SOUTHERN DISTRICT.

Bay Bulls—John L. McKie. Aquafort—Peter Winsor. Trapassey—George Simms. Burin—Thomas Birkett. St George's Bay—John Allery.

THE
LIVERPOOL and LONDON
FIRE AND LIFE INSURANCE COMPANY.
Established in 1836.

LIABILITY OF PROPRIETORS UNLIMITED.

Invested Funds, £1,259,826.

Progress of the Company since 1848.

Year.	Fire Premiums.	Life Premiums.	Invested Funds.
1848	35,472	19,840	388,990
1853	113,612	49,128	620,898
1858	276,056	121,411	1,156,035
1859	295,414	127,415	1,213,317
1860	313,725	131,721	1,259,826

THE ANNUAL INCOME EXCEEDS £450,000.

FIRE INSURANCE

On all Descriptions of PROPERTY.

Rates as low as is consistent with proper security.

LIVERPOOL BOARD,

HEAD OFFICE 1, DALE STREET.

CHAIRMAN.

George Grant, Esquire.

DEPUTY-CHAIRMEN.

Charles S. Parker, Esq., James Aspinall Tobin, Esq.

John B. Brancker, Esq
 A. H. Campbell, Esq
 Thomas Haigh, Esq
 George Holt, Esq
 Joseph Hubback, Esq
 Harold Littledale, Esq
 John Marriott, Esq
 Francis Shand, Esq
 Samuel Ashton, Esq

Thomas Brocklebank, Esq
 William Earle, Esq
 Robert Higgin, Esq
 Hugh Hornby, Esq
 George Hall Laurence, Esq
 Edward Moon, Esq
 Charles Saunders, Esq
 John Swainson, Esq
 J. C. Ewart, Esq., M. P.

SECRETARY.

Swinton Boulton, Esquire.

Prospectuses and all information can be had of the under-
 signed, *Agents for Newfoundland,*

BOWRING, BROTHERS, St. John's.

THE
ROYAL
Insurance Company.

HEAD OFFICES—Royal Insurance Buildings, LIVER-
POOL, and Lombard Street, LONDON.

BRANCH OFFICES—Manchester, Birmingham, Bristol, Leeds,
Edinburgh, Glasgow, and Dublin.

PROGRESS OF THE FIRE BRANCH.

The following Statement will show the Rapid Growth of the
FIRE PREMIUMS.

Year	Total Premiums Received			Increase of each Year above the preceding one.		
1850	£44,027	10	0	£9,557	19	8
1851	52,673	5	11	8,645	15	11
1852	76,925	4	2	24,251	18	3
1853	112,564	4	4	35,639	0	2
1854	128,459	11	4	15,895	7	0
1855	130,060	11	11	1,601	0	7
1856	151,733	9	6	21,672	17	7
1857	175,049	4	8	23,315	15	2
1858	196,148	2	6	21,098	17	10
1859	228,314	7	3	32,166	4	9
1860	262,977	19	11	34,663	12	8

The following Statement of the Periodical Additions made to the Fire Reserved Fund will more clearly exhibit its high position and vast resources. It should be observed that these sums reserved are in *addition* to its large CAPITAL IN HAND OF £283,065, and are quite irrespective of the Life and Annuity Accumulations.

In the year 1849 the Reserved Fund amounted only to	£24,731	12	0
In the Three following years £27,046 3s. was added to that amount	27,046 3 0
In the next Three years £29,206 12s. 9d. was added	29,206 12 9
While in the Four years, ending 1859, the sum added was	79,158 2 3
Making the Total to the credit of that account	£160,142	10	0

The TOTAL FUNDS in hand :—

Capital paid up	£283,065	0	0
Fire Reserved Fund	160,142	10	0
Life Fund	207,061	19	0
Annuity Funds	43,308	13	10
Endowment Funds	5,286	16	8
		<hr/>		
		£698,863	19	6

Besides a considerable amount to Profit and Loss not yet disposed of.

The INCREASE of the "ROYAL" in 1860, was more than DOUBLE THAT OF ANY OTHER COMPANY, and more than 30 PER CENT of the entire Increase of all the London Offices combined. The Increase of the ROYAL is also more than 30 PER CENT. of the entire Increase of the other Twenty-eight Country Offices combined.

LIFE BRANCH.

The Reports of the Company for several years have had invariably to announce a constant periodical expansion of its Life business, the new policies of each succeeding year showing an advance over the one that had immediately preceded it. A similar result is shown in the year 1860, the premiums on new policies, after deducting guarantees, being £15,079 17s. 10d., which is an increase on that item of £1,993 17s. 5d. above the amount received for the year 1859.

POLICIES WITHOUT PAYMENT OF PREMIUM AND PRESENT VALUES.

The following statement will make clear the increasing value which will attach to the Policies of the Company, when in existence for some years :—

Policy, dated 2nd September, 1845; Sum Assured	£2,000	0	0	
Amount of Policy, with Bonuses, at the present moment, and subject to future additions at subsequent valuations	2,560	0	0
Or, a Policy would be issued in lieu, without the payment of any further Premiums, for	1,172	6	0
The Total Premiums already paid being only	910	0	0

A Policy, dated 1st December, 1845; Sum Assured	£999	0	0	
Amount of Policy, with Bonuses, at the present moment, and subject to future additions at subsequent valuations	1,279	0	0
Or, a Policy would be issued in lieu, without the payment of any further Premiums, for	546	10	0	
The Total Premiums already paid being	364	7	6
Policy, dated 23rd November, 1848; Sum Assured	£300	0	0	
Amount of Policy, with Bonuses, at the present moment, and subject to future additions at subsequent valuations	366	0	0
Or, a Policy would be issued in lieu, without the payment of any further Premiums, for	149	9	10	
The Total Premiums already paid being	241	16	0

Special Advantages of the LIFE BRANCH.
PROFITS—Large Proportion returned every Five Years to Policies then in existence two entire years.

Expenses chiefly borne by the Fire Branch, in order to increase the Bonus to be returned.

LIFE BONUSES DECLARED,

Two per cent. per Annum on the sum Assured:
The Greatest Bonus ever continuously declared by any Company.

PERCY M. DOVE, *Actuary and Manager.*

JOB, BROTHERS & Co.,

Agents for Newfoundland.

ABSTRACT

CENSUS & RETURN

OF THE

Population, &c., of Newfoundland,

TAKEN IN 1857.

Printed on good paper, royal quarto, and substantially half-bound, for sale at the Office of the *Courier*, Duckworth Street, third door West of Prescott Street, and at the Shop of Mr. T. McCONNAN, Water Street.

THE
Colonial Life Assurance Company,

*Registered and Empowered under Act of Parliament, 7 and 8
 Victoria, Cap. 110.*

Capital—£500,000.

GOVERNOR.

The Right Honorable the Earl of Elgin and Kincardine:

LONDON—4 A LOTHBURY.

EDINBURGH, 1 GEORGE ST. GLASGOW, 35, ST VINCENT PLACE.

Board of Directors in Edinburgh.

GEORGE MOIR, Esquire—Chairman.

George Mercer, Esq
 James M. Melville, Esq
 Peter Ramsay, Esq
 George Patten, Esq
 James Duncan, Esq
 Archibald Horne, Esq

Henry David Hill, Esq
 James Hay, Esq
 Alexander J. Russell, Esq
 William Stewart Walker, Esq
 John Robert Todd, Esq

Medical Adviser—Henry Marshall, Esq
Actuary—William Thomas Thompson, Esq
Secretary—Henry Jones Williams, Esq
Auditor—Charles Pearson, Esq.

Board of Directors in London.

The Right Honourable the EARL OF MINTO:

Alexander Gillespie, Esq
 T. Holdsworth Brooking, Esq
 John Scott, Esq

David Laing Burn, Esq
 Alexander McGregor, Esq

Medical Adviser—Dr. John W. Woodfall
Secretary—Sydney Crocker, Esq

Board of Directors in Glasgow.

Mungo Campbell, jr., Esq
 William Eccles, Esq
 Alexander Glasgow, Esq

George Gillespie, Esq
 Malcolm M'Caul, Esq
 Donald Smith, Esq

Medical Adviser—Dr. A. D. Anderson
Secretary—William Hunter, Esq

Board of Directors in Newfoundland.

Head Office—St. John's.

G. T. Brooking, Esq., Hon Laur. O'Brien, Walter Grieve, Esq.

Medical Adviser—Henry Hunt Stabb, Esq., M.D.

Agent—George T. Brooking.

GEO. T. BROOKING,

Agent for Newfoundland.

ALLIANCE

BRITISH AND FOREIGN

Life and Fire Assurance Company.

BARTHOLOMEW LANE, LONDON.

*Established by Act of Parliament.***CAPITAL—£5,000,000, Sterling.***Board of Direction:*

Samuel Guerne, Esq.

| Sir Moses Montefiore, F.R.S.

Directors.

James Alexander, jr., Esq
 G. H. Barnett, Esq
 Sir E. N. Boxton, Bart
 Sir R. Campbell, Bart
 Benjamin Cohen, Esq
 Edward Fletcher, Esq
 Charles Gibbes, Esq
 William Gladstone, Esq

James P. Howard, Esq
 John Irving, Esq
 Louis Lucas, Esq
 Thomas Masterman, Esq
 Thomas Richardson, Esq
 Lionel N. D. Rothschild, Esq
 Oswald Smith, Esq
 H. M. Thornton, Esq

Auditors.

Sir Geo. Carrol, Samuel Guerne, jr., Esq., Andrew Johnston, Esq.

Bankers—Messrs. Barnett, Hoares & Co.*Actuary*—Benjamin Compertz, Esq., F.R.S.*Secretary*—Andrew Hamilton, Esq.*Physician*—John R. Hume, M.D., Curzon Street*Solicitor*—John M. Pearce, Esq.*Surveyor*—Thomas Allason, Esq.**Established March, 1824.**

The Rates of the Premiums of Assurance for the greater part of LIFE, will be found lower than those in use in many of the older and most respectable Offices.

The Premiums of Assurance on FIRE, are the same as those which are demanded by the first class of Assurance Companies.

Parties INSURED participate in PROFITS every Five Years.

Losses by LIGHTNING made good.

BROOKING, SON & Co.*Agents.*

IMPERIAL
Fire Insurance Company,
LONDON.

—
Instituted 1803.
—

SUBSCRIBED AND INVESTED CAPITAL,
**ONE MILLION SIX HUNDRED
THOUSAND POUNDS.**

Directors :

Sir CHARLES RUGGE PRICE, Bart., Chairman.

EDWARD HENRY CHAPMAN, Esq., Deputy-Chairman.

<p>Thomas G. Barclay, Esq James Christian C. Bell, Esq R. Cooper Lee Bevan, Esq James Brand, Esq George H. Cutler, Esq Henry Davidson, Esq Duncan Dunbar, Esq Samuel Hibbert, Esq Sir John Kirkland, Esq William Lyall, Esq</p>		<p>James Malcolmson, Esq Claude Neilson, Esq Frederick Patison, Esq John Sanderson Rigge, Esq William R. Robinson, Esq John Scott, Esq M. T. Smith, Esq., M.P. Newman Smith, Esq Richard Twining, Esq</p>
---	--	---

Ex-Directors :

<p>Augustus H. Bosanquet, Esq Charles Cave, Esq George Field, Esq</p>		<p>George Hibbert, Esq Samuel Hyde, Esq James G. Murdoch, Esq</p>
---	--	---

Auditors :

<p>Paul Butler, Esq Isaac Carr, Esq George William Cottam, Esq</p>		<p>Thomas A. Gibb, Esq Charles Marryat, Esq</p>
--	--	---

Ex-Auditor :

James Scott, Esquire.

Agent, St. John's, Newfoundland,

THOMAS G. MORRY.

ALBERT
Medical and Family Endowment
LIFE ASSURANCE COMPANY,
WITH WHICH IS COMBINED THE
Kent Mutual Assurance Society,
L O N D O N.

Established, 1838.

The accumulated Assets exceed	(Sterling) £650,000
The Subscribed Capital 500,000
The Paid up Capital 145,000
The Annual Income from Life Premiums, exceeds	250,000
The Policy Claims and Bonuses paid to Claimants about	} 1,000,000
The New Business is progressing at the rate of about £30,000 per annum.	

A BONUS EVERY THREE YEARS.

The BONUSSES already declared, have ranged from
TWENTY-FIVE up to FIFTY per cent.
on the PREMIUMS paid.

NEWFOUNDLAND AGENCY.

Medical Referees—Drs. Crowdy and Simms.

Particulars may be ascertained and Assurances effected on
application to

WILLIAM J. WARD,

*Agent for Newfoundland, Cape Breton,
and Prince Edward Island.*



**TINWARE and STOVE
ESTABLISHMENT.**

George Gear,
Wholesale and Retail Dealer in
Parlor, Hall, Office & Cook Stoves,
**RANGES,
FURNACES,
GRATES,
SUMMER PIECES, &c.**

A Large Assortment of
TINWARE
Constantly on Hand.
WATER-STREET, Two Doors West of Messrs. THOMAS &
DICKINSON'S, ST. JOHN'S, N. F.
Particular Attention given to Job Work.



ELMSLY & SHAW,
GENERAL GROCERS,
 AND
Wine and Spirit Merchants,
ST. JOHN'S,
Newfoundland.

ROBERT PEACE,
 DEALER IN
COOKING STOVES and RANGES,
 Parlor, Office and Hall

STONES,
Gothic Grates, &c.,

From Manufacturers in Albany, Troy, Taunton, New York
 and Boston.

STOVE-PIPES,
TIN, COPPER, and BRASS WORK.
 Adjoining Messrs. Baine, Johnston & Co's.,
WATER STREET.

NEWFOUNDLAND
“FISH GUANO,”
(FOX'S PATENTS.)

THE PROPRIETORS of the Patents for these valuable Fertilisers apprise the Farmers in general, that a supply of them will be ready for delivery on or before April, 1862, packed in Barrels for drill or broad cast sowing.

THE “FISH GUANO” (for grass land) will be found rich and abounding in nitrogen, and fresh researches have enabled the Patentee to introduce improvements in their manufacture so as to increase the amount of nitrogen by 1.58 per cent over last season's make and lessen the amount of water by 3.42, giving a total available manure of 81.04 in 100 parts.

Professor Herepath's (of Bristol) report of last season makes,—

Water	23.96
Organic Matter	63.76
Phosphate of Lime	10.20
Cloride of Sodium	3.08
		100
Available Manure	76.04
Containing Nitrogen	3.42

Superphosphate of Lime with “Fish Guano.”

Many years ago Leibig, the eminent Agricultural Chemist, suggested that bones dissolved with Sulphuric acid would grow much better crops of Turnips, Mangold, &c., than bones alone. This led to the manufacture of Superphosphate of Lime, and now there are large numbers of manufacturers of this article; upwards of 30,000 to 40,000 Tons were sent out from London alone last year. The proprietors, therefore, offer this article in great purity combined with “Fish Guano” to the Tillers of the soil, as a valuable compost, firmly relying on experience, trials, results, to establish its merits, quality, and productive powers.

St. John's, November, 1861.

MEDICAL HALL,*St. John's, Newfoundland.***J. J. DEARIN,****CHEMIST & DENTAL SURGEON,**

Wholesale and Retail Dealer in

Drugs, Oils, Spices, Perfumery,**Chemicals, Patent MEDICINES, Paints,
Varnishes, and Dye Stuffs,****Garden Seeds, Confectionary,**Manufacturer of **MEDICATED COD LIVER OIL** for Ex-
portation, of the purest quality, and for which orders
will be thankfully received and punctu-
ally attended to.**ALEXANDER MITCHELL,**

AUCTIONEER

AND GENERAL COMMISSION AGENT,*Opposite Job, Brothers & Co.,***Water Street,****ST. JOHN'S, NEWFOUNDLAND.****Book & Job Printing,****O**F every description, neatly executed at the shortest notice
the nature of the Work will admit of, at the Office of
the "*Courier*," Duckworth Street, three doors West of Pres-
cott Street.**FISH, OIL, CASH RECEIPT and ORDER****B O O K S**

ALWAYS ON HAND.

JOSHUA G. WILBUR,

DRUGGIST,

119 Leveret Street, Boston, U.S.A.

DEALER IN

**Drugs, Medicines, Chemicals, Perfumery,
FANCY GOODS, Toilet ARTICLES, &c.**

Pressed HERBS—of superior quality

SURGICAL INSTRUMENTS

Best Foreign LEECHES

New Remedies early received.

All Kinds of PATENT MEDICINES, (Warranted Genuine)

Every Article warranted of the Best Quality.

ALL ORDERS, accompanied by the CASH, promptly answered
and at Reasonable Prices.

E. A. TEULON,

CARD ENGRAVER,

ROOMS IN "AMORY HALL" BUILDING,

No. 323 Washington Street, three doors North of West Street.

CARDS

Engraved on Copper Plate, in the most fashionable styles, at
the following low prices. The sum at the extreme
right is that charged at all other places in
Boston for precisely the same articles.

	STORES CHARGE	
1 Engraved Plate and 50 Cards for Visiting	\$1.75	\$3.00
1 Engraved Plate and 100 Cards, for Weddings	2.75	4.50
1 Engraved Plate, with Residence, for Weddings, and 100 Cards	3.00	5.00
1 Invitation Plate and 100 Cards, for Weddings	4.50	7.00
100 Cards, and Printing from an old Plate	1.50	2.00

The above shall be Engraved in the neatest styles, and
Printed on the best Cards used.

Also, constantly on hand, a choice assortment of Wedding
Envelopes, Cake-Boxes, Colored, Fancy and Mourning Cards,
Mourning Note Paper, and Wedding Stationery generally.

Cummings, Rich & Co.,

Nos. 82, 84, and 86, UNION STREET,

Boston, Mass.,

Manufacturers of all kinds of

TRUNKS. VALISES

Carpet, Leather, and Enameled-cloth

BAGS.

Umbrellas, Patent Leather Belts,

HORSE BLANKETS,

SADDLES, HARNESS, &c., &c.

COMMON TRUNKS

For Shipping, made to Nest Seven together, at

Prices that will *defy competition.*

Parties in want of any of the above Goods will find it to their advantage to give us a call.

STAR
Life Assurance Society,
48, Moorgate Street.

TRUSTEES,

George Smith, L.L.D.
William Betts, Esq.

William Skinner, Esq.
Frederick Mildred, Esq.

THE STAR LIFE ASSURANCE COMPANY was founded in the year 1843. It was established by members of the Wesleyan Methodist Society, and is the only Company connected with that Body.

By its Deed of Settlement special provision is made that a majority of the Directors shall be accredited Wesleyan Methodists. The STAR has been largely adopted by the Itinerant Preachers, as a medium for family provision—upwards of 500 being already assured in this Company.

NEWFOUNDLAND AGENCY.

Medical Referee :—W. C. SIMMS, Esq., M.D., *Member of the Royal College of Surgeons, Edinburgh.*

JOSEPH WOODS,

Agent for Newfoundland.

Bogle's Wigs and Hair Work!

Truest to Nature, irreproachable in style and Perfect in Fit!

NONE CAN EQUAL THEM.

Sole Agent for the Royal Transparent Parting.

OBSERVE THE DOTTED LINES.

No. 1—The circumference of the head.

No. 2—Temple to temple—across the back.

No. 3—Forehead to nape of the neck.

No. 4—Ear to ear over the temple.

Nos. 1, 3 & 4, are to be particularly observed.



Persons residing in any part of the world can be beautifully fitted to a Wig or Toupee, by measuring their heads as above, and sending a sample of their hair, and stating also the style and manner in which they usually wear it.

BOGLE'S ELECTRIC HAIR DYE,

Best and Cheapest in the World. No smut, no skin staining; but pure, permanent and natural. Try—be convinced.

Prices, 50 cents, \$1.00, \$1.50.

Are you getting Bald? is your Hair turning Grey? BOGLE'S HYPERION FLUID is the great Restorer, Dresser and Curler of HAIR,—all others are sham imitations. Prices, 25, 50, 75, cents, \$1.00 and \$1.50.

BOGLE'S Balm of Cytherea beautifies the complexion, Price 50c. Sold by Druggists throughout the United States, Canadas, and England.

Proprietor, W. BOGLE, 202, Washington Street, Boston, Mass. Opposite Marlboro' Hotel. Every Toilet Article kept for Sale.

Cotton Lines, Nets and Seines.

THE AMERICAN

Net & Twine Manufacturing Company,

RESPECTFULLY ask the Newfoundland Fishermen to give their Fabrics a fair trial, and it is believed that they will be found *durable, light*, and of AMPLE STRENGTH.

They are universally used in the United States.

43, Commercial Street, Boston.

C 45599

it to their advantage to give us a call.

ed the on- t a ho- ant 00

the

ed.



Correct in principle, thorough in construction, accurate, convenient and durable in operation.

These SCALES are still made under the supervision of the original Inventors, and are constantly receiving improvements, based on their skill and experience of more than THIRTY years devoted only to this branch of business. They have received *more first class premiums* than ALL other Scales; and, what is of more practical value, have received the award of SUPERIOR EXCELLENCE by the *vast numbers* who have used them for many years. At our Warehouse, may constantly be found a complete assortment of all kinds of weighing apparatus adapted to every branch of business, as Hay, Coal, Railroad, Ice and Stone Scales; Platform, Counter and Warehouse Scales; Druggists', Confectioners', Butchers' and Gold Scales; with an ample variety of *Store Furnishing Equipments* as Sugar Mills, Alarm Money Drawers, Measures, Weights, &c.—All warranted in every respect.

FAIRBANKS & BROWN,

118 MILK STREET, BOSTON.

Sold in St. John's, Nfld., by
JAMES GLEESON, and CLIFT, WOOD & Co.

